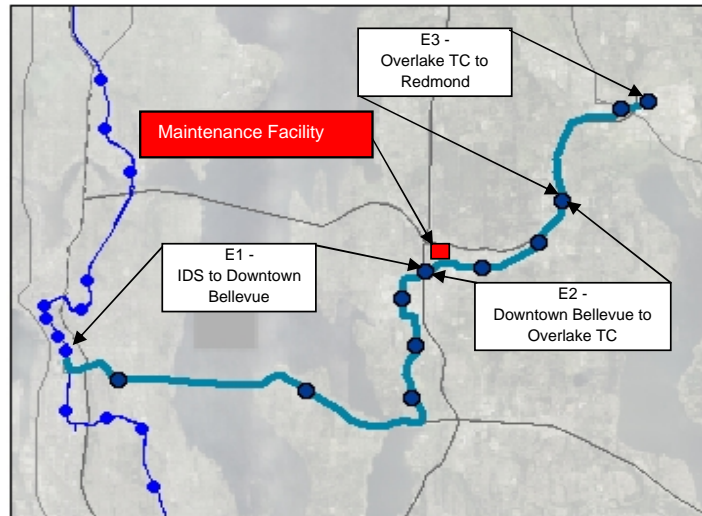


HCT-LRT: Maintenance Facility and Vehicles

Project Number	E4
Subarea	East King
Primary Mode Impacted	Link
Facility Type	Link Service
Version Number	3.0
Date Last Modified	5/19/2006

Project Locator Map



Short Project Description

Project Purpose:
 Provide an LRT Maintenance Facility to service the East Corridor LRT alignment (Seattle to Redmond) proposed in Projects E1, E2 and E3.
 Provide 43 LRT vehicles for the East Corridor alignment.

Cost and Schedule

Cost (in Millions of 2005\$)

Schedule

	Low	High
Agency Admin	\$19.9	\$22.9
Environmental Clearances and PE	\$3.7	\$4.2
Final Design, Specs, Permitting	\$9.2	\$10.6
ROW Acquisition	\$76.1	\$87.5
Construction	\$79.9	\$91.9
Vehicles	\$162.5	\$186.9
Contingency	\$6.4	\$7.3
Total Cost	\$357.6	\$411.3

Proposed Schedule Not Yet Developed

Design Basis

Conceptual

Environmental Documentation Required

- Environmental Impact Statement Required
- Environmental Assessment Required
- Environmental Checklist Required

Relationships to Other Projects

Relationship	Project
Dependent on	Project E1: LRT Line and Stations from Seattle (IDS) to downtown Bellevue and all associated projects that this project is dependent on or impacted by
Dependent on	Project E2: LRT Line and Stations from downtown Bellevue to Overlake TC and all associated projects that this project is dependent on or impacted by
Dependent on	Project E3: LRT Line and Stations from Overlake TC to Redmond Terminal Station and all associated projects that this project is dependent on or impacted by

Project Partners

Agency

WSDOT
KC Metro
City of Bellevue
City of Redmond

HCT-LRT: Maintenance Facility and Vehicles

Long Description

This capital project scope, and the companion capital cost estimate, are intended to include the entire project development cycle (agency and project administration, environmental clearance, design, all aspects of property acquisition permits, agreements, construction, testing, commissioning and contingencies) from project initiation through the start-up of operations.

This project description is to provide an LRT maintenance facility and 43 LRT vehicles for the East Corridor alignment from Seattle to Redmond.

At this stage of project development, a representative site was used to develop a cost-estimate. The final site location would be determined through project level design and environmental review. The base cost estimate includes design allowance contingency, construction change order contingency, and unallocated contingency.

Representative Alignment Project Elements:

- 15-20 acre site centrally located within the light rail corridor
- Service and storage track and switches
- Vehicle barn
- Train washer
- Wheel truing facilities
- Maintenance of Way Facilities
- Parking and storage area
- Environmental mitigation
- 43 light rail vehicles

Utilities:

Utility investigations have not been carried out. Relocation of standard utilities along the alignment has been assumed as part of the scope and has been estimated using an average per route foot allowance.

ROW:

Property interests required for the prototypical alignment include fee acquisitions, partial takes, easements and interagency agreements. Right-of-way requirements include construction staging and contractor laydown areas. No specific provisions are made for contractor parking. Cost estimates include associated relocation, administration and legal costs, and contingency.

Mitigation:

The final project scope will include all mitigation(s) committed to by ST in pertinent, future project-level environmental documents.

Exclusions:

- Lead Track from the main alignment for both the aerial and the underground alignment options has been included in the capital cost for project E1

Permits:

BNSF permits / easements for:

- Access to the Maintenance facility

City of Bellevue agreements:

- Transitway agreement

Others:

- Potential operating agreement with King County Metro

Project Dependencies:

- Refer to E1 and E2

ST has developed scope definitions for ST2 project proposals for the purposes of developing cost estimates, implementation schedules, a financial plan, and the estimation of project benefits. This scope definition should not be construed as a commitment that all defined features will be included in the final developed project.

HCT-LRT: Maintenance Facility and Vehicles

Evaluation Measures

Measure	Measurement/ Rating	Notes
Average Weekday Ridership	N/A	
Capital Cost	\$357.6 - \$411.3	in Millions of 2005\$
Annual Operating Cost	Included elsewhere	in Millions of 2005\$. O&M costs for this project are subject to change and will be recalculated when the full extent of the ST2 LRT system for all of the Sound Transit subareas is known.
Travel Time & Reliability	N/A	
Connectivity & Integration	N/A	
Land Use & Development	N/A	
Customer Experience	N/A	
Risk Avoidance	Low	

Key Issues and Benefits

Issues:

- Locating 15-20 acre site near the light rail alignment
- Impact of City of Bellevue Bel-Red corridor study on zoning and cost of ROW
- Size of maintenance facility and vehicle requirements dependent upon eastern terminus of light rail project

Benefits:

- Facility is necessary to support the light rail project from Seattle to Redmond
- Second maintenance facility increases light rail operations efficiency and flexibility