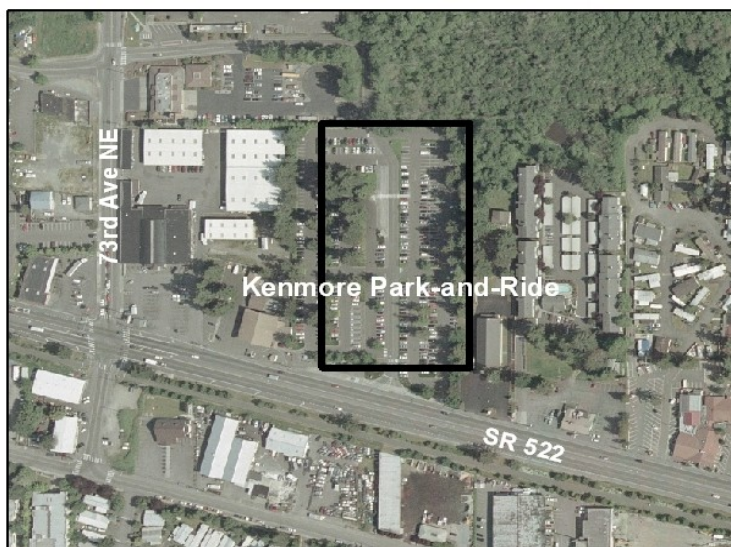


## Express Bus: Parking Garage and Pedestrian Bridge over SR 522 at Kenmore Park-&-Ride (Kenmore)

Project Number	E22
Subarea	East King
Primary Mode Impacted	ST Express
Facility Type	Park & Ride
Version Number	3.0
Date Last Modified	5/10/2006

### Project Locator Map



### Short Project Description

Construct up to 600 structured parking stalls and a pedestrian overpass to eastbound SR 522. Construction of the parking garage will displace approximately 200 of the existing surface stalls and the remaining surface area will be reconfigured for 400 surface stalls. A total of 1,000 stalls will be available at the park-and-ride after the construction and reconfiguration project.

**Project Purpose:** Improve transit rider access to transit service along the SR 522 corridor.

### Cost and Schedule

Cost (in Millions of 2005\$)

	Low	High
Agency Admin	\$2.3	\$2.6
Environmental Clearance and PE	\$3.0	\$3.5
Final Design, Specs, Permitting	\$3.0	\$3.5
ROW Acquisition	\$3.2	\$3.7
Construction	\$25.2	\$29.0
Vehicles	\$0.0	\$0.0
Contingency	\$3.4	\$4.0
<b>Total</b>	<b>\$40.1</b>	<b>\$46.1</b>

Schedule

Proposed Schedule Not Yet Developed

Design Basis      Conceptual

### Environmental Documentation Required

- Environmental Impact Statement Required
- Environmental Assessment Required
- Environmental Checklist Required

### Relationships to Other Projects

Relationship	Project

### Project Partners

WSDOT
KC Metro
City of Kenmore
City of Bothell

## Express Bus: Parking Garage and Pedestrian Bridge over SR 522 at Kenmore Park-&-Ride (Kenmore)

### Long Description

*This capital project scope, and the companion capital cost estimate, are intended to include the entire project development cycle (agency and project administration, environmental clearance, design, all aspects of property acquisition permits, agreements, construction, testing, commissioning and contingencies) from project initiation through the start-up of operations.*

#### Description

Construct up to 600 structured parking stalls and a pedestrian overpass to eastbound SR 522 at the existing Kenmore park-and-ride site (73rd Avenue NE & SR 522). Construction of the parking garage will displace approximately 200 of the existing surface stalls - the remaining surface area will be reconfigured for 400 surface stalls. A total of 1,000 stalls will be available at the park-and-ride after the construction and reconfiguration project.

#### Project Elements Included:

- A pedestrian bridge with elevator access and stairs will be constructed over SR 522 (allowing room for the new business access and transit (BAT) lanes on SR 522)
- Pedestrian illumination along the pedestrian bridge
- Signage, lighting, CCTV, customer emergency stations, elevators, stairs and fire suppression within the garage
- Sidewalk, curb and gutter along frontage of this structure
- 1 percent for art per ST policy
- Parking mitigation program during construction as necessary

#### Utilities:

- A new drainage system including a vault and bus shelters on SR 522
- Add signal and driveway access to park-and-ride lot on 73rd Avenue NE

#### Right-of-Way and Property Acquisition:

- As required for parking mitigation program

#### Mitigation:

The final project scope will include all mitigation(s) committed to by ST in pertinent, future project-level environmental documents.

#### Exclusions:

- Reconstruction or widening of SR 522
- Mitigation for impacts to the existing Heron rookery to the north of the existing park-and-ride lot (no wildlife studies have been completed at this time).
- Additional bike storage, lockers, and racks
- Public restrooms
- Non-structural architectural and aesthetic elements in excess of the ST art program

#### Permits Required:

Building, electrical, mechanical, utility, and construction related.

#### Agreements Required:

Partnership agreement with WSDOT, King County and City of Kenmore

*ST has developed scope definitions for ST2 project proposals for the purposes of developing cost estimates, implementation schedules, a financial plan, and the estimation of project benefits. This scope definition should not be construed as a commitment that all defined features will be included in the final developed project.*

## Express Bus: Parking Garage and Pedestrian Bridge over SR 522 at Kenmore Park-&-Ride (Kenmore)

### Evaluation Measures

<i>Measure</i>	<i>Measurement/ Rating</i>	<i>Notes</i>
Average Weekday Ridership	N/A	
Capital Cost	\$40.1 - \$46.1	in Millions of 2005\$
Annual Operating Cost	<b>\$0.4</b>	in Millions of 2005\$
Travel Time & Reliability	<b>N/A</b>	
Connectivity & Integration	Medium	# transit routes: 1 ST, 5 KCM
Land Use & Development	<b>High</b>	
Customer Experience	<b>Medium</b>	
Risk Avoidance	High	

### Key Issues and Benefits

#### Issues:

- Providing a temporary parking lot during construction or staging construction so that additional spaces are provided along the SR 522 corridor for use during construction
- A drainage system including detention vaults and water quality
- Visual impact of tall parking structure in this area
- Heron rookery located immediately to the north of the existing park-and-ride site

#### Benefits:

- Improves transit rider access to transit service along the SR 522 corridor
- Provides needed park-and-ride capacity along the SR 522 corridor
- Rider benefits would be increased with the proposed BAT lanes