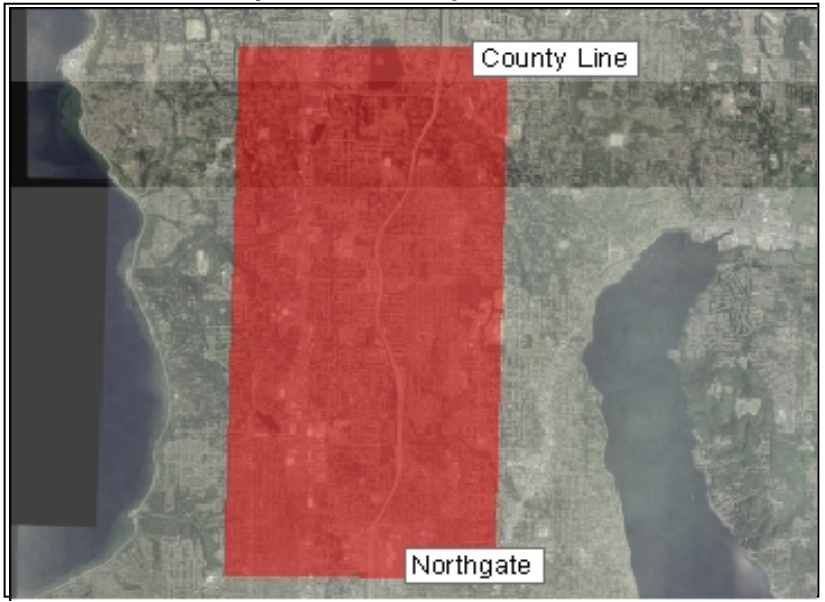


Link LRT: Preliminary Engineering from Northgate to King/Snohomish County Line (N. King County)

Project Number	N5
Subarea	North King
Primary Mode Impacted	Link
Facility Type	Link Service
Version Number	3.0
Date Last Modified	5/17/2006

Project Locator Map



Short Project Description

Complete environmental reviews and preliminary engineering for extending light rail from Northgate to the King-Snohomish County line.

Project Purpose: to establish the route and station locations and expedite construction in a future phase of Sound Transit system development.

Cost and Schedule

Cost (in Millions of 2005\$)

Schedule

	Low	High
Agency Admin	\$1.3	\$1.5
Environmental Clearance and PE	\$22.1	\$25.4
Final Design, Specs, Permitting	\$0.0	\$0.0
ROW Acquisition	\$0.0	\$0.0
Construction	\$0.0	\$0.0
Vehicles	\$0.0	\$0.0
Contingency	\$2.3	\$2.7
Total	\$25.7	\$29.6

Proposed Schedule Not Yet Developed

Design Basis

Conceptual

Environmental Documentation Required

- Environmental Impact Statement Required
- Environmental Assessment Required
- Environmental Checklist Required

Relationships to Other Projects

Relationship	Project

Project Partners

WSDOT
City of Shoreline
City of Seattle
FHWA
FTA

Link LRT: Preliminary Engineering from Northgate to King/Snohomish County Line (N. King County)

Long Description

Description:

This project would complete environmental reviews and preliminary engineering for extending light rail from Northgate to the King-Snohomish County line, to establish the route and station locations and expedite construction in a future phase of Sound Transit system development.

Estimated costs reflect an approximately 6.3 mile segment from Northgate to 236th St SW, and are based on 7% of the "high end" of the range of conceptual construction costs developed as part of the Long Range Plan Update.

Project Elements Included:

- Conduct alternatives screening
- Complete environmental reviews assuming current NEPA/SEPA process requirements, including scoping, draft and final environmental impact statements, and record of decision
- Perform conceptual engineering for DEIS alternatives
- Perform preliminary engineering for the preferred alternative
- Prepare project definition and budget to support a potential future ballot measure to fund final design and construction

Utilities:

- none

Right-of-Way and Property Acquisition:

- none

Mitigation:

- none

Exclusions:

- none

Permits Required:

- none

Agreements Required:

- none

ST has developed scope definitions for ST2 project proposals for the purposes of developing cost estimates, implementation schedules, a financial plan, and the estimation of project benefits. This scope definition should not be construed as a commitment that all defined features will be included in the final developed project.

Evaluation Measures

Measure	Measurement/ Rating	Notes
Average Weekday Ridership	N/A	
Capital Cost	\$25.7 - \$29.6	in Millions of 2005\$
Annual Operating Cost	\$0.0	in Millions of 2005\$
Travel Time & Reliability	N/A	
Connectivity & Integration	N/A	
Land Use & Development	High	
Customer Experience	N/A	
Risk Avoidance	High	

Link LRT: Preliminary Engineering from Northgate to King/Snohomish County Line (N. King County)

Key Issues and Benefits

Issues:

- If the project is performed too far in advance of final design and construction (which would require approval of a future phase ballot proposal), there is high risk that much or all of it would have to be re-done to reflect changed conditions and regulations. This project should be performed late in the ST2 program to minimize that risk.

Benefits:

- Completes necessary environmental and engineering to allow quicker progression to final design and construction in a future phase.
- Preserves opportunity to seek future federal funding for construction.
- Completing this work would strengthen the cost estimates and establish a baseline scope and cost.