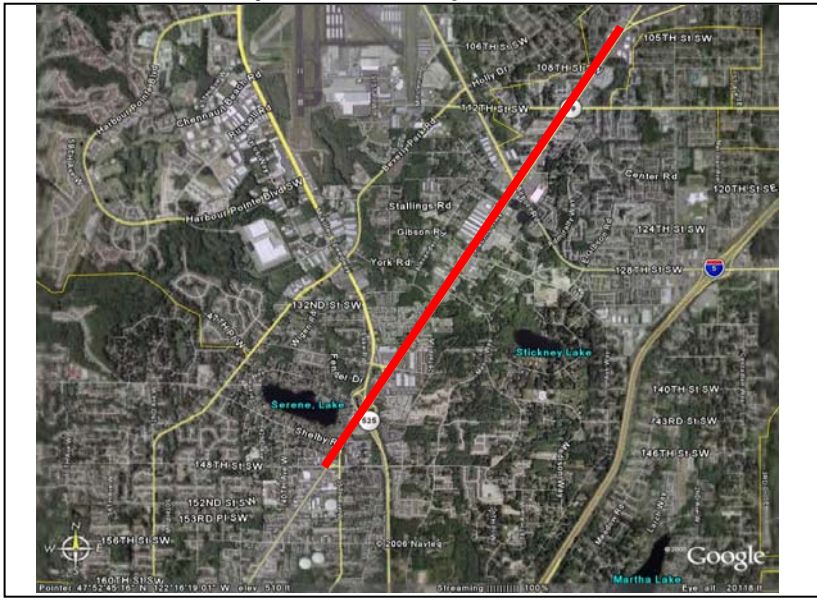


# Express Bus: BAT Lanes on SR 99 and Evergreen Way - 148th St to Everett Mall Way (Snohomish County)

<b>Project Number</b>	N11a
<b>Subarea</b>	Snohomish
<b>Primary Mode Impacted</b>	ST Express
<b>Facility Type</b>	BRT Facility
<b>Version Number</b>	3.0
<b>Date Last Modified</b>	5/17/2006

**Project Locator Map**



## Short Project Description

Construct approximately 3.26 miles of curbside BAT lanes in both directions between 148th Street SW and Everett Mall Way in Everett.

**Project Purpose:** to improve the speed and reliability of existing and planned services.

## Cost and Schedule

*Cost (in Millions of 2005\$)*

*Schedule*

	Low	High
Agency Admin	\$5.8	\$6.7
Environmental Clearance and PE	\$7.3	\$8.4
Final Design, Specs, Permitting	\$7.3	\$8.4
ROW Acquisition	\$12.2	\$14.1
Construction	\$61.6	\$70.9
Vehicles	\$0.0	\$0.0
Contingency	\$8.9	\$10.2
<b>Total</b>	<b>\$103.2</b>	<b>\$118.7</b>

**Proposed Schedule Not Yet Developed**

## Design Basis

Conceptual

## Environmental Documentation Required

- Environmental Impact Statement Required
- Environmental Assessment Required
- Environmental Checklist Required

## Relationships to Other Projects

<i>Relationship</i>	<i>Project</i>
Complements	N12 Express Bus: BAT Lanes on SR 99 (N. King County)
Complements	N11b, N11c, N11d
Alternative to	Portion of N11

## Project Partners

Snohomish County
City of Everett
WSDOT

# Express Bus: BAT Lanes on SR 99 and Evergreen Way - 148th St to Everett Mall Way (Snohomish County)

## Long Description

*This capital project scope, and the companion capital cost estimate, are intended to include the entire project development cycle (agency and project administration, environmental clearance, design, all aspects of property acquisition, permits, agreements, construction, testing, commissioning and contingencies) from project initiation through the start-up of the revenue operations.*

### Description:

Project N11a will construct 3.26 miles of Business Access & Transit (BAT) lanes in both directions on SR 99 north of Lynnwood. BAT lanes exist just to the south of the intersection at 148th Street SW in both direction of SR 99. This section of SR 99 is located in the unincorporated Snohomish County and the City of Everett.

Generally, this section of SR 99 has five existing lanes with two 11-foot wide general purpose lanes in each direction with a 12-foot wide two-way center left turn lane. North of 112th Street SW, SR 99 has seven existing lanes. The existing shoulder width varies from 8 to 15-foot. In the vicinity of the SR 525 interchange, the two-way center left turn lane becomes a 10-foot raised median. The shoulders become an 8 to 10-foot wide on and off ramps for SR 525. Recent developments along SR 99 provided curbs, gutter and sidewalks. Other locations do not have curb, gutter or sidewalks and some locations have drainage ditches. A bus pull-out is located just south of Lincoln Way in the southbound direction. The existing right-of-way (ROW) is 100 feet except for the sections of the SR 525 interchange where it is 150 feet. Bus pull-outs are provided just to the north of the 112th Street SW intersection in both directions.

The land use for the majority of this stretch of SR 99 is generally auto-access oriented businesses. Low density residential uses adjacent to these businesses have access from the side streets off SR 99. SR 99 at the interchange with SR 525 is fully controlled access. The remainder of this section is partially controlled access with left and right-turn pockets.

The proposal is to construct 14-foot BAT lanes along SR 99 in both directions. Components include a contiguous curb, gutter and sidewalk.

### Project Elements Included:

- Construct 14-foot Business Access/Transit (BAT) lane
- Signage
- Curb, gutter and 6-foot sidewalks
- Landscaping
- "C"-curbing and/or left-turn pockets where required in the median
- ADA compliant bus shelters/stops
- Parking removal
- 1 percent of all capital project costs, excluding tunneling, for art

### Utilities:

- Underground utilities where required by local ordinances
- Power/communications conduit for Transit Signal Priority (TSP)
- Relocate utilities where needed
- Storm water facilities and water quality treatment that meets or exceeds city, county and state requirements

### Right-of-Way and Property Acquisition:

- ROW acquisition where necessary to widen roadway to accommodate BAT lanes

### Mitigation:

- The final project scope will include all mitigation(s) committed to by ST in pertinent, future project-level environmental documents.

### Exclusions:

- Non-structural architectural and aesthetic elements in excess of the ST art program
- Major changes to the two-way left turn lane and access management improvements
- Replacement of displaced on-street parking
- Noise walls
- Special accommodations for bicycles beyond the 14-foot BAT lanes
- BRT stations
- Operations and maintenance of facility

### Permits Required:

- utility, construction-related

### Agreements Required:

- City of Everett, Snohomish County, WSDOT

*ST has developed scope definitions for ST2 project proposals for the purposes of developing cost estimates, implementation schedules, a financial plan, and the estimation of project benefits. This scope definition should not be construed as a commitment that all defined features will be included in the final developed project.*

# Express Bus: BAT Lanes on SR 99 and Evergreen Way - 148th St to Everett Mall Way (Snohomish County)

## Evaluation Measures

<i>Measure</i>	<i>Measurement/ Rating</i>	<i>Notes</i>
Average Weekday Ridership	N/A	
Capital Cost	\$103.2 - \$118.7	in Millions of 2005\$
Annual Operating Cost	\$0.0	in Millions of 2005\$
Travel Time & Reliability	Medium	maximized by linkage with projects N11b, c, and d
Connectivity & Integration	Medium	# transit routes: 1-2 CT, 1 ET, 1 ST
Land Use & Development	High	
Customer Experience	Medium	
Risk Avoidance	Medium	

## Key Issues and Benefits

### Issues

- ST would not operate BRT service in this corridor.
- The BRT service component that would benefit from these BAT lanes is not in place, and is dependent on agreement and funding between Community Transit and Everett Transit.
- WSDOT, Snohomish County and/or the City of Everett may require significant access management improvements along SR-99 that are not part of this project's scope.
- Access to adjacent businesses and residences will be restricted during construction.
- Constructing to full standards will require ROW acquisition and reconstruction of existing curb/gutter/sidewalk along some stretches.

### Benefits

- Provides a major capital component of the arterial BRT system envisioned for this corridor.
- Significant rider travel time and transit agency operating cost savings predominantly benefiting local transit services.
- Fills a significant gap in the overall SR-99 BAT lane system; with projects N11b,c,d and N 12, would complete an almost continuous BAT lane system from downtown Everett to north Seattle.
- Improves bus service reliability.