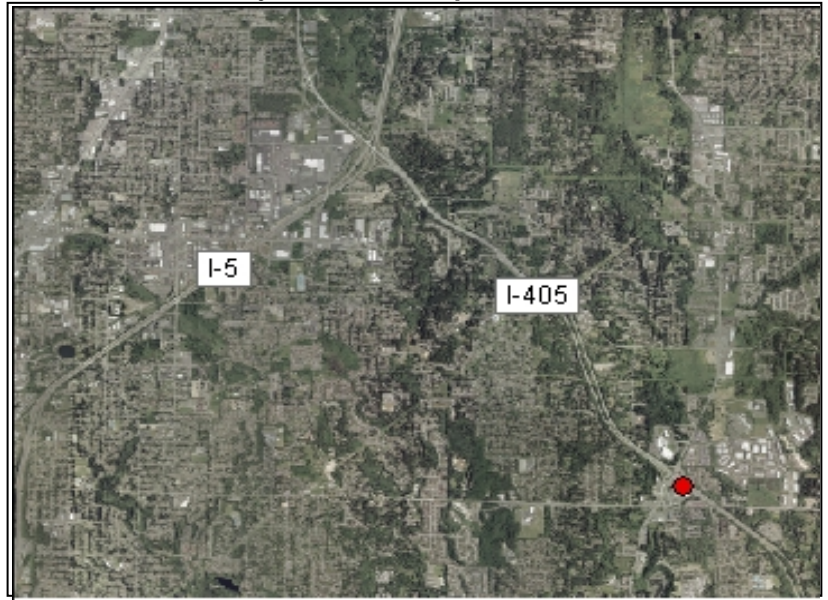


# Express Bus: Parking Garage at Canyon Park Park-&-Ride (Bothell)

Project Number	N19
Subarea	Snohomish
Primary Mode Impacted	ST Express
Facility Type	Park & Ride
Version Number	3.0
Date Last Modified	5/17/2006

*Project Locator Map*



## Short Project Description

Construct up to 600 structured parking stalls, displacing 300 existing surface stalls, for a net additional 300 parking stalls.

**Project Purpose:** to help meet long-term park-and-ride demand along the SR-527 and I-405 corridors.

## Cost and Schedule

*Cost (in Millions of 2005\$)*

*Schedule*

	Low	High
Agency Admin	\$1.4	\$1.7
Environmental Clearance and PE	\$1.9	\$2.2
Final Design, Specs, Permitting	\$1.9	\$2.2
ROW Acquisition	\$2.0	\$2.3
Construction	\$15.9	\$18.3
Vehicles	\$0.0	\$0.0
Contingency	\$2.2	\$2.5
<b>Total</b>	<b>\$25.4</b>	<b>\$29.2</b>

**Proposed Schedule Not Yet Developed**

## Design Basis

Conceptual

## Environmental Documentation Required

- Environmental Impact Statement Required
- Environmental Assessment Required
- Environmental Checklist Required

## Relationships to Other Projects

<i>Relationship</i>	<i>Project</i>
Impacted by/Substitute for	N20 Express Bus: Surface Park-&-Ride along SR 527 (Mill Creek)
Impacted by	Canyon Park Freeway Station (Sound Move project)
Impacted by	I-405 Corridor Project (WSDOT project)

## Project Partners

Snohomish County
Community Transit
WSDOT
City of Bothell

# Express Bus: Parking Garage at Canyon Park Park-&-Ride (Bothell)

## Long Description

*This capital project scope, and the companion capital cost estimate, are intended to include the entire project development cycle (agency and project administration, environmental clearance, design, all aspects of property acquisition, permits, agreements, construction, testing, commissioning and contingencies) from project initiation through the start-up of the revenue operations.*

### Description:

This project would construct up to 600 structured parking stalls, displacing 300 existing surface stalls, for a net additional 300 parking stalls. The project would construct a multi-level parking structure that incorporates a passenger drop-off area to the south of the structure. Since the existing lot is so small, the entire site will be closed during construction.

### Project Elements Included:

- Parking structure for 600 stalls, including lighting, CCTV, customer emergency stations, elevators and stairs, fire suppression, signage
- Traffic signal and intersection modifications at SR 527 /220th Street SE and 220th Street SE/17th Avenue SE
- Parking mitigation program during construction, as necessary
- 1 percent for art per ST policy

### Utilities:

- Drainage modifications to existing lot
- Utilities relocation including undergrounding of overhead utilities

### Right-of-Way and Property Acquisition:

- Miscellaneous easements

### Mitigation:

- The final project scope will include all mitigation(s) committed to by ST in pertinent, future project-level environmental documents.

### Exclusions:

- Non-structural architectural and aesthetic elements in excess of the ST art program
- Expansion of existing bus loading area
- Reconstruction of surrounding local streets
- Pedestrian amenities
- Retaining walls
- Public restrooms
- Additional bike storage, lockers, and racks

### Permits Required:

- Building, electrical, mechanical, utility, construction-related

### Agreements Required:

- Snohomish County, City of Bothell, WSDOT, Community Transit

*ST has developed scope definitions for ST2 project proposals for the purposes of developing cost estimates, implementation schedules, a financial plan, and the estimation of project benefits. This scope definition should not be construed as a commitment that all defined features will be included in the final developed project.*

## Evaluation Measures

<b>Measure</b>	<b>Measurement/ Rating</b>	<b>Notes</b>
Average Weekday Ridership	N/A	
Capital Cost	\$25.4 - \$29.2	in Millions of 2005\$
Annual Operating Cost	<b>\$0.4</b>	in Millions of 2005\$
Travel Time & Reliability	<b>N/A</b>	
Connectivity & Integration	Medium	# transit routes: 4 ST, 6 CT
Land Use & Development	<b>Medium</b>	
Customer Experience	<b>Medium</b>	
Risk Avoidance	High	

# Express Bus: Parking Garage at Canyon Park Park-&-Ride (Bothell)

## Key Issues and Benefits

### Issues

- The garage needs to be connected to the new Sound Move pedestrian bridge connecting the P&R to the southbound flyer stop at I-405/228th St.
- Bus operations may be significantly impacted during construction.
- Street connections between the P&R lot and surrounding streets may need to be modified to make room for a parking garage.
- The project might generate enough additional traffic on adjacent streets to impact level of service.
- Building height restrictions may affect the size and footprint of the parking garage.
- Other sites along the I-405 corridor may serve much of the same market, and be more suitable for P&R expansion.
- There are wetlands adjacent to the site that may be impacted by construction.

### Benefits

- Support proposed new SR-527 ST Express Service (N14).
- Helps meet forecasted long term P&R demand along the SR-527/ I-405 corridor, and alleviate short-term parking shortages.
- Higher capital cost of building structured parking on heavily used existing surface lot may be offset by potentially higher long term, ongoing, operating costs of serving added parking capacity at a new location.