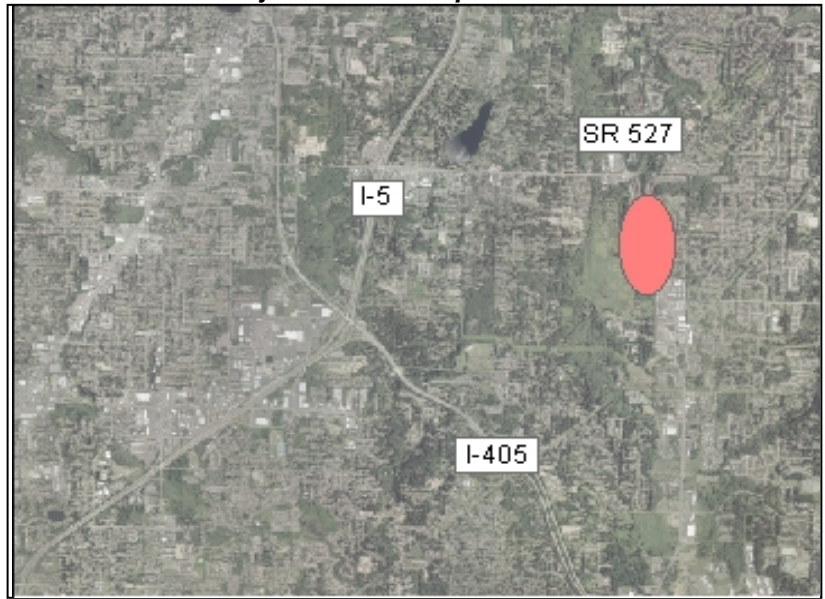


# Express Bus: Surface Park-&-Ride along SR 527 (Mill Creek)

Project Number	N20
Subarea	Snohomish
Primary Mode Impacted	ST Express
Facility Type	Park & Ride
Version Number	3.0
Date Last Modified	5/17/2006

*Project Locator Map*



## Short Project Description

Construct up to 250 surface parking stalls in a new park-and-ride lot along SR-527 between Mill Creek and Canyon Park.

**Project Purpose:** to provide access to possible new ST Express service along SR-527 and to meet long-term park-and-ride demand.

## Cost and Schedule

*Cost (in Millions of 2005\$)*

*Schedule*

	Low	High
Agency Admin	\$0.4	\$0.5
Environmental Clearance and PE	\$0.6	\$0.7
Final Design, Specs, Permitting	\$0.6	\$0.7
ROW Acquisition	\$0.6	\$0.7
Construction	\$5.0	\$5.7
Vehicles	\$0.0	\$0.0
Contingency	\$0.7	\$0.8
<b>Total</b>	<b>\$7.9</b>	<b>\$9.1</b>

**Proposed Schedule Not Yet Developed**

## Design Basis

Conceptual

## Environmental Documentation Required

- Environmental Impact Statement Required
- Environmental Assessment Required
- Environmental Checklist Required

## Relationships to Other Projects

Relationship	Project
Dependent on	N14 Express Bus: New Route between Everett and Bellevue via SR 527
Impacted by/Substitute for	N19 Express Bus: Parking Garage at Canyon Park Park-&-Ride (Bothell)

## Project Partners

City of Mill Creek
Snohomish County
Community Transit

# Express Bus: Surface Park-&-Ride along SR 527 (Mill Creek)

## Long Description

*This capital project scope, and the companion capital cost estimate, are intended to include the entire project development cycle (agency and project administration, environmental clearance, design, all aspects of property acquisition, permits, agreements, construction, testing, commissioning and contingencies) from project initiation through the start-up of the revenue operations.*

A number of suitable vacant parcels exist along SR 527, just south of 164th Street SW in Mill Creek, to construct a new Park and Ride with up to 250 stalls for ST transit riders. All parcels are undeveloped properties.

### Project Elements Included:

- 250-stall surface parking lot, including lighting, CCTV, customer emergency stations, elevators and stairs, fire suppression, signage
- Bus loading area with bus shelters
- Roadway frontage reconstruction (driveway, curb, gutter, and sidewalk) along parking lot only
- 1 new traffic signal
- Illumination
- Parking mitigation program during construction, as necessary
- Bike storage, lockers, and racks
- 1 percent for art per ST policy

### Utilities:

- New drainage system including water detention and water quality

### Right-of-Way and Property Acquisition:

- Sufficient real property to permit construction of 250 surface parking stalls

### Mitigation:

- The final project scope will include all mitigation(s) committed to by ST in pertinent, future project-level environmental documents.

### Exclusions:

- Non-structural architectural and aesthetic elements in excess of the ST art program
- Reconstructing or overlaying SR 527
- Illumination improvement on SR 527
- Public restrooms

### Permits Required:

- building, electrical, mechanical, utility, construction-related

### Agreements Required:

- Snohomish County, City of Mill Creek, Community Transit

*ST has developed scope definitions for ST2 project proposals for the purposes of developing cost estimates, implementation schedules, a financial plan, and the estimation of project benefits. This scope definition should not be construed as a commitment that all defined features will be included in the final developed project.*

## Evaluation Measures

<b>Measure</b>	<b>Measurement/ Rating</b>	<b>Notes</b>
Average Weekday Ridership	N/A	
Capital Cost	\$7.9 - \$9.1	in Millions of 2005\$
Annual Operating Cost	\$0.1	in Millions of 2005\$
Travel Time & Reliability	N/A	
Connectivity & Integration	Medium	# transit routes: 1 ST, 4 CT
Land Use & Development	High	
Customer Experience	Medium	
Risk Avoidance	High	

## Express Bus: Surface Park-&-Ride along SR 527 (Mill Creek)

### Key Issues and Benefits

#### Issues

- Project has more benefit if served by proposed new ST Express route on SR-527 (project N 14)
- The proximity to North Creek will require careful drainage planning and mitigation
- Other sites along the I-405 corridor may serve much of the same market, and be more suitable for P&R expansion
- The project might generate enough additional traffic on adjacent streets to impact level of service
- Depending on final location, the project may not be compatible with Snohomish County Urban Center or Urban Village designations

#### Benefits

- Support proposed new SR-527 ST Express Service (N14).
- Helps meet forecasted long term P&R demand along the SR-527/ I-405 corridor, and alleviate short-term parking shortages.