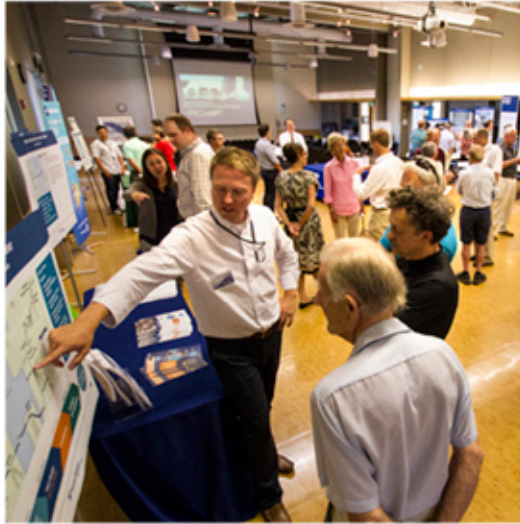


Welcome



Tonight's listening session focuses on Mercer Island transportation. The purpose of the meeting is to:

- Review background information about transportation topics on Mercer Island
- Provide comments verbally or in writing to the City of Mercer Island, Sound Transit, King County Metro and the Washington State Department of Transportation
- Help identify outstanding transportation issues

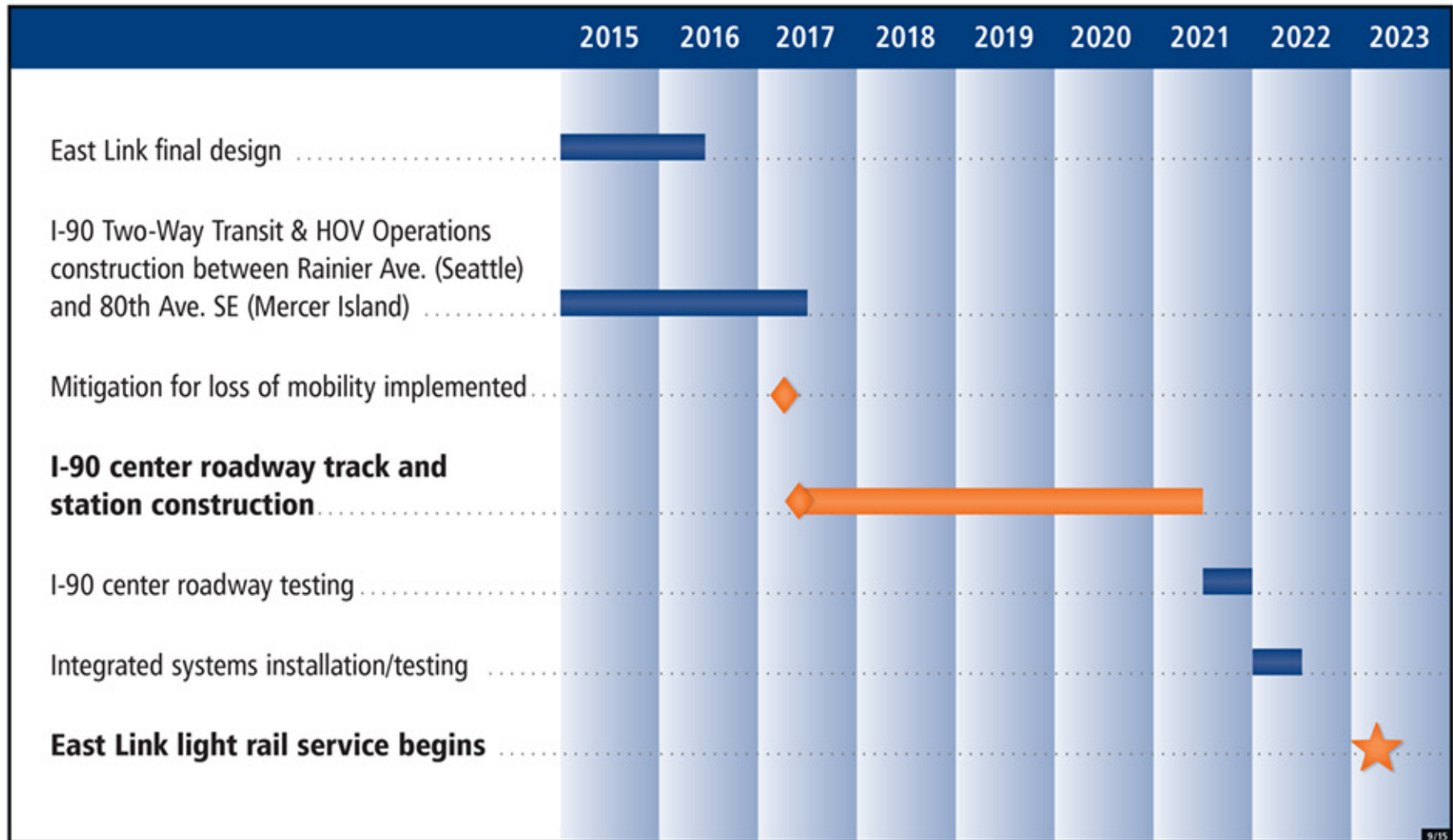
Agenda

- 5 p.m.** Engage City of Mercer Island, Sound Transit, King County Metro and WSDOT staff around the room to answer questions and provide input
- 5:30 p.m.** Brief remarks from staff preceding community comment period
- 7 p.m.** Meeting adjourns

East Link Light Rail Alignment



I-90 Schedule



Mercer Island Station Design

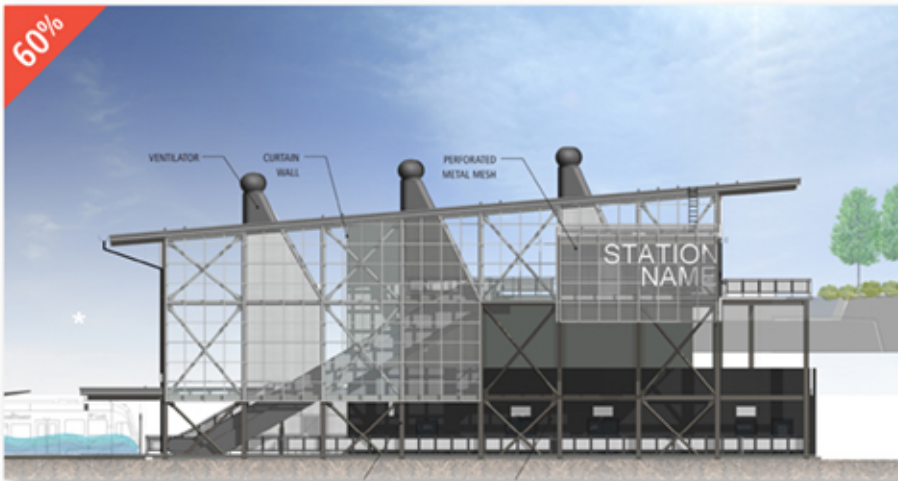
60 percent designs presented in July 2014. These designs do not reflect any community feedback received in July 2014. Sound Transit will present updated designs to the community in 2016.

Panorama view



View from Mercer Island Park-and-Ride

Alternate station color



Mercer Island Station was adopted as the permanent name in July 2015.

Cutaway view of platform

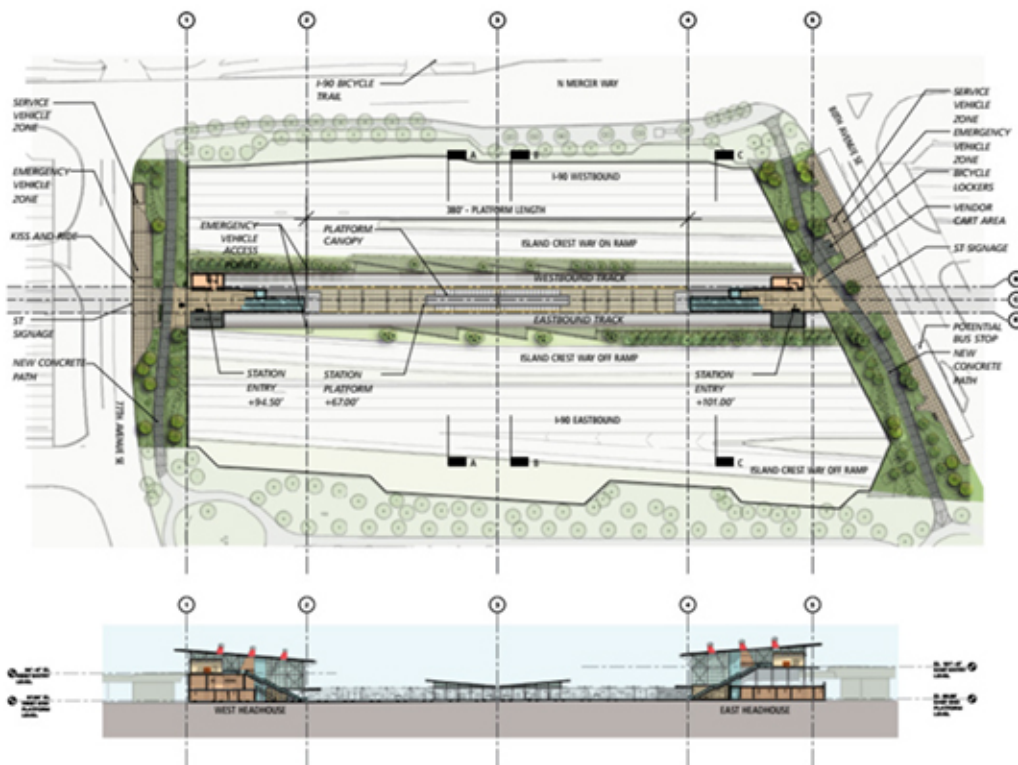


The gray area is a sound wall represented as a translucent screen. This will be a solid wall.

Entry at 80th Ave SE



Station site plan



Legend

	Auxiliary Rooms		Platform		Station Entry
	Bicycle Storage		Platform Circulation		Seating

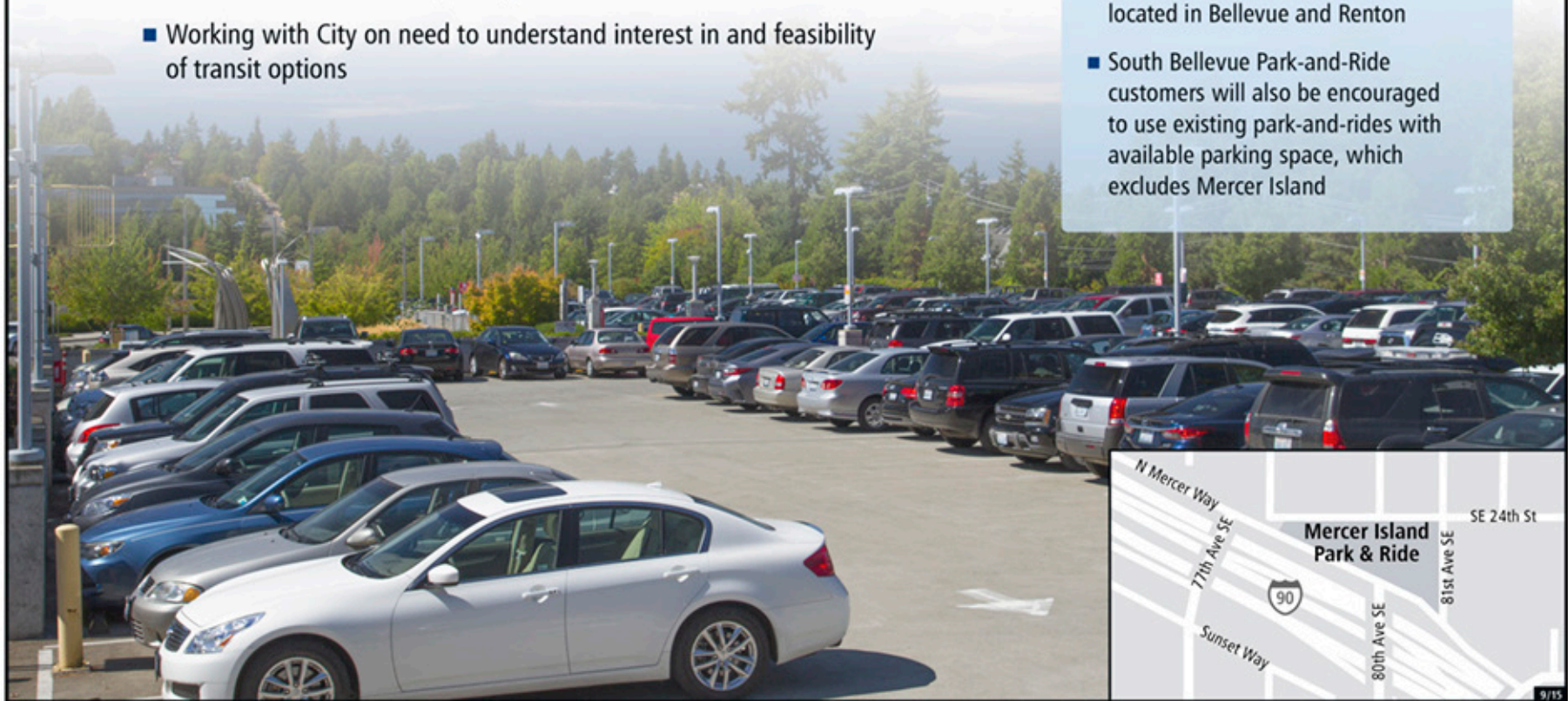
Parking

Park-and-Ride Challenge:

- 46% (2015) of Mercer Island Park-and-Ride users live on Mercer Island
- Existing park-and-ride is full by 7:30 a.m.
- Strong interest during East Link outreach on Mercer Island in additional and dedicated commuter parking
- Working with City on need to understand interest in and feasibility of transit options

Did you know?

- The South Bellevue Park-and-Ride will be closed for five years for construction of the light rail station and 1,500 (current = 500) stall parking garage
- Leased replacement parking will be located in Bellevue and Renton
- South Bellevue Park-and-Ride customers will also be encouraged to use existing park-and-rides with available parking space, which excludes Mercer Island



Link Connections

Sound Transit and King County Metro are working to integrate bus and light rail service across the region. There are bus-rail connections at every Link station. The integration of services is being pursued to improve:

■ Transit operations

Coordinated light rail and bus service will provide more overall service with fewer resources, resulting in increased overall transit use and the ability to improve bus service by redeploying bus hours to meet customers need.

■ Customer experience

Improved access and better connections combined with reduced travel times and increased reliability and service will make riding transit more attractive and effective.

■ Transportation capacity

Integrated train and bus service adds needed capacity to our regional transportation system.

■ Environmental quality

An increase in transit use takes cars off roads, reducing greenhouse gas pollution.

Shoreline Stations (N 145th St/ N 185th St):

- Four to eight routes may feed into stations.
- Link may replace bus routes operating between Shoreline and Downtown Seattle.

University of Washington Station:

- Eight routes proposed to feed into station.
- Link proposed to replace bus routes operating between University District, Capitol Hill and Downtown Seattle. (Currently under consideration by the King County Council)

Northgate Station:

- Seven to ten routes may feed into station.
- Link may replace bus routes operating between Northgate and Downtown Seattle.

Redmond Technology Center

Rainier Beach Station:

- Two routes feed into station
- Link replaced bus routes operating between Skyway and Downtown Seattle.

Mercer Island Station

- Five routes may feed into station.
- Link would replace bus routes operating between Mercer Island and Downtown Seattle.

South Bellevue Station

- Four routes may feed into station.
- Link would replace bus routes operating between Mercer Island and Downtown Seattle.



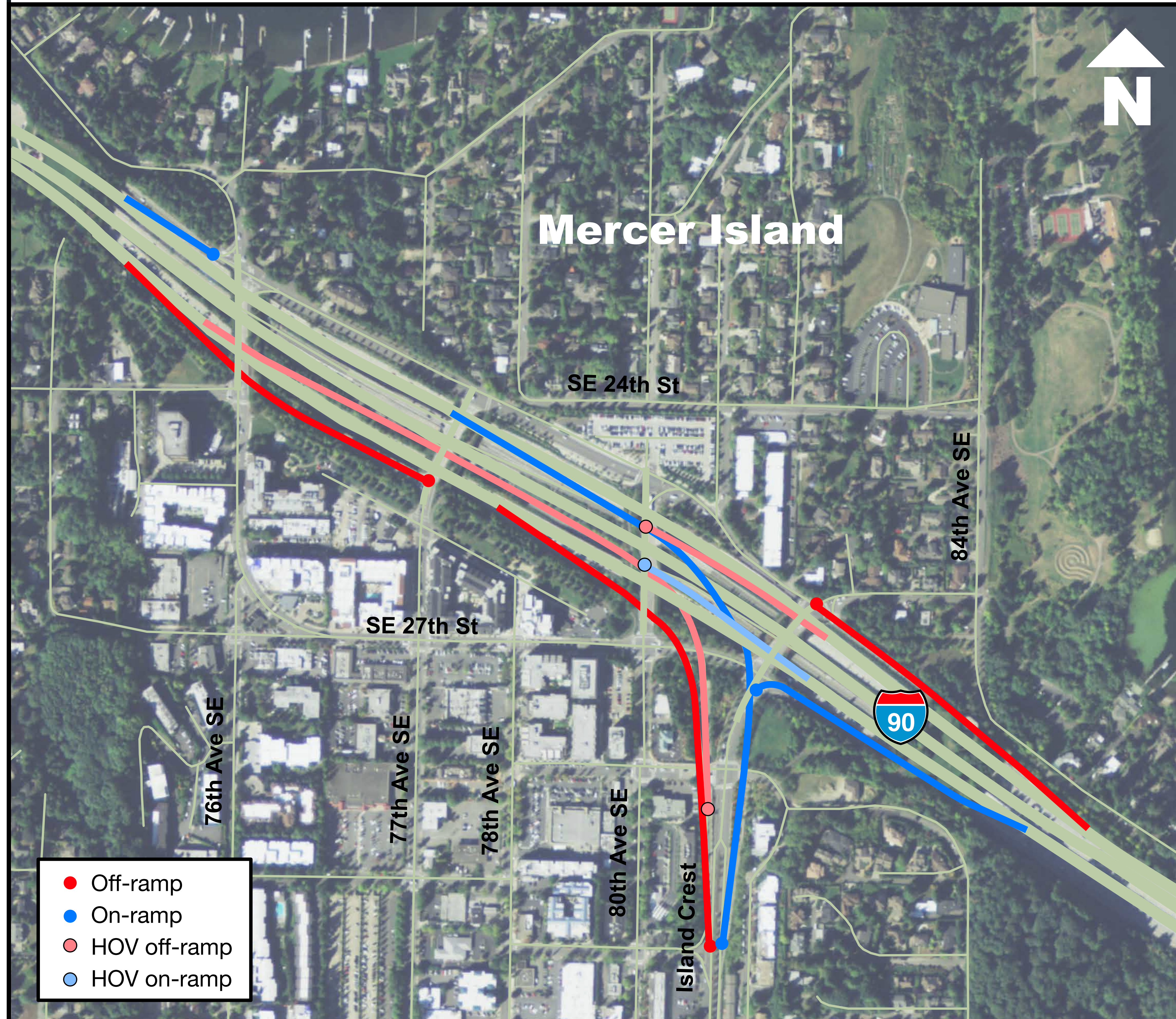
Traffic Mitigation Commitments

Improvements are a result of mitigation defined in the East Link Final Environmental Impact Statements to adjust to the change in travel patterns to and from the island. Further study on the Island Crest Way ramp and surrounding streets may be performed.



I-90 Access

Central Mercer Island access at project completion



New

- Westbound 80th Ave SE HOV off-ramp (Stage 1)
- Eastbound 80th Ave SE HOV on-ramp (Stage 2)
- Westbound 76th Ave SE on-ramp bus bypass (Stage 3)
- Eastbound Island Crest Way HOV off-ramp (Stage 3)

No Change

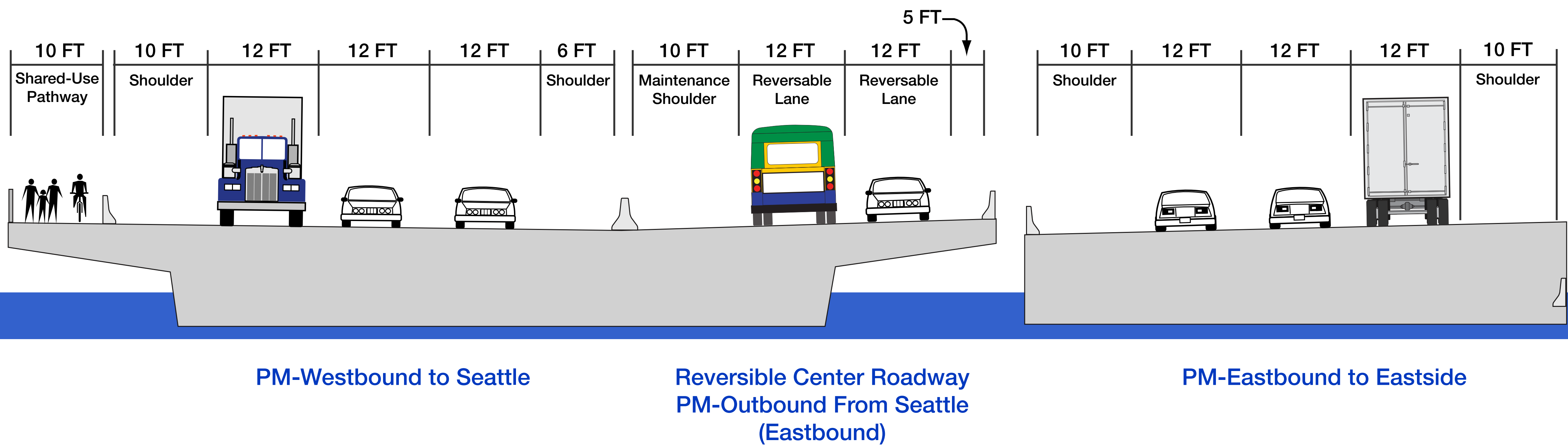
- Island Crest Way outer roadway ramps
- West Mercer Way ramps
- East Mercer Way ramps
- Eastbound 77th Ave SE off-ramp

Closed

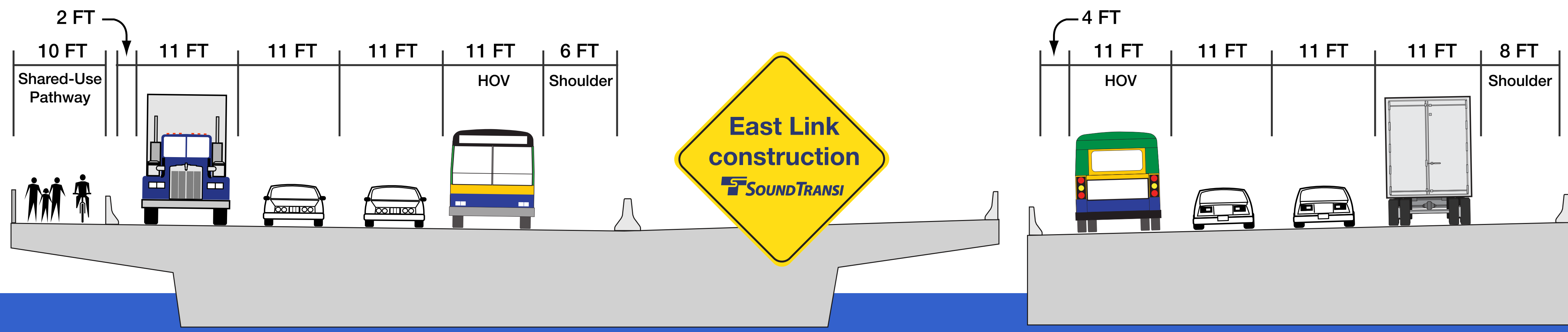
- 80th Ave SE reversible ramp (Stage 2)
- 77th Ave SE reversible ramp (Stage 3)
- Island Crest Way reversible ramp (Stage 3)

I-90 Roadway Configuration

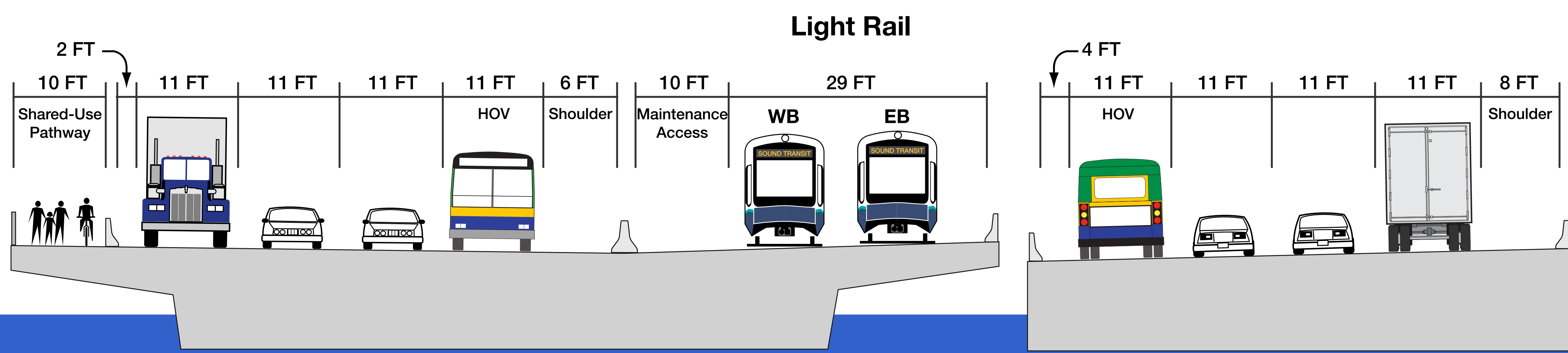
Existing Configuration



At completion of I-90 Two-Way Transit Project



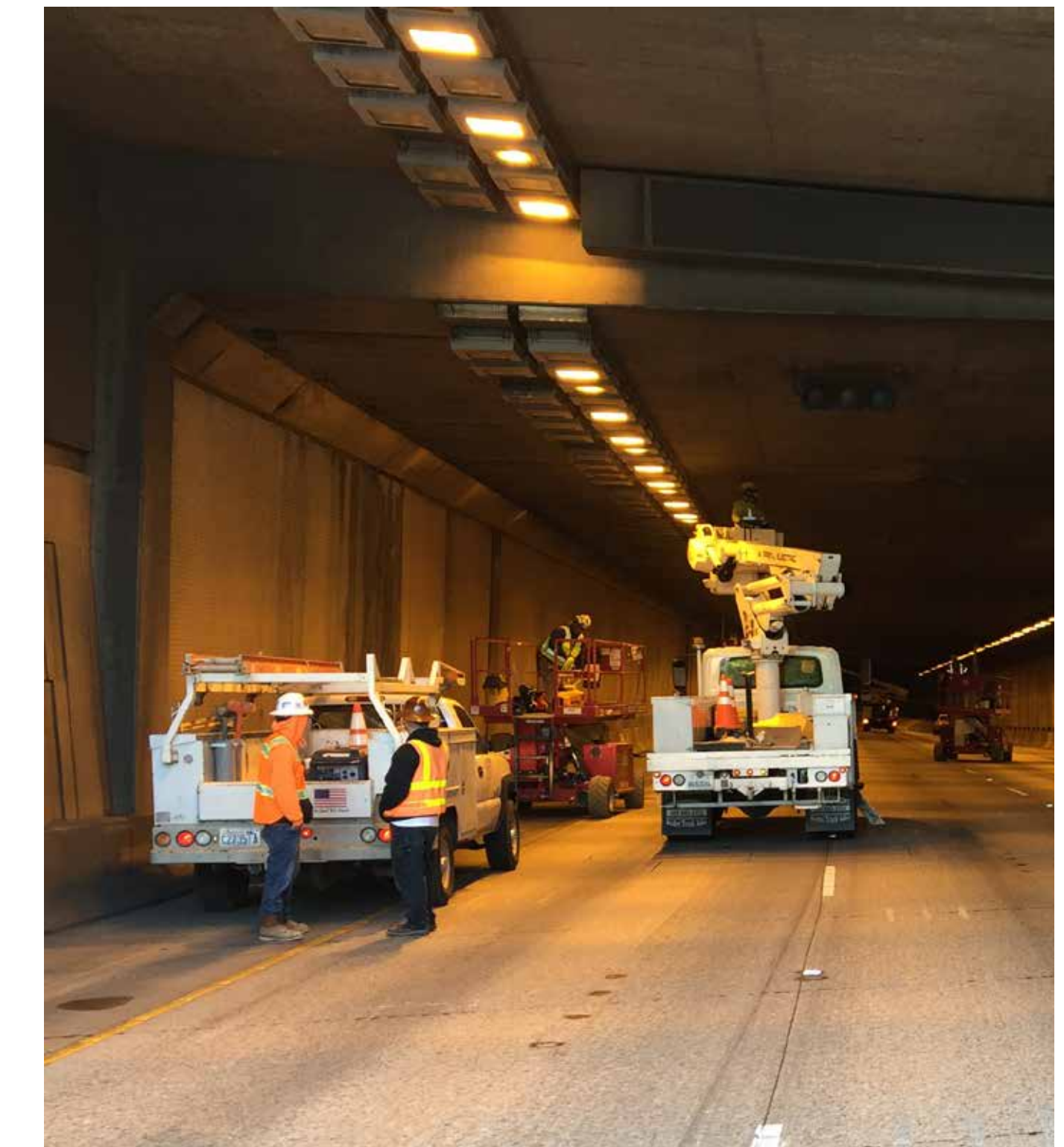
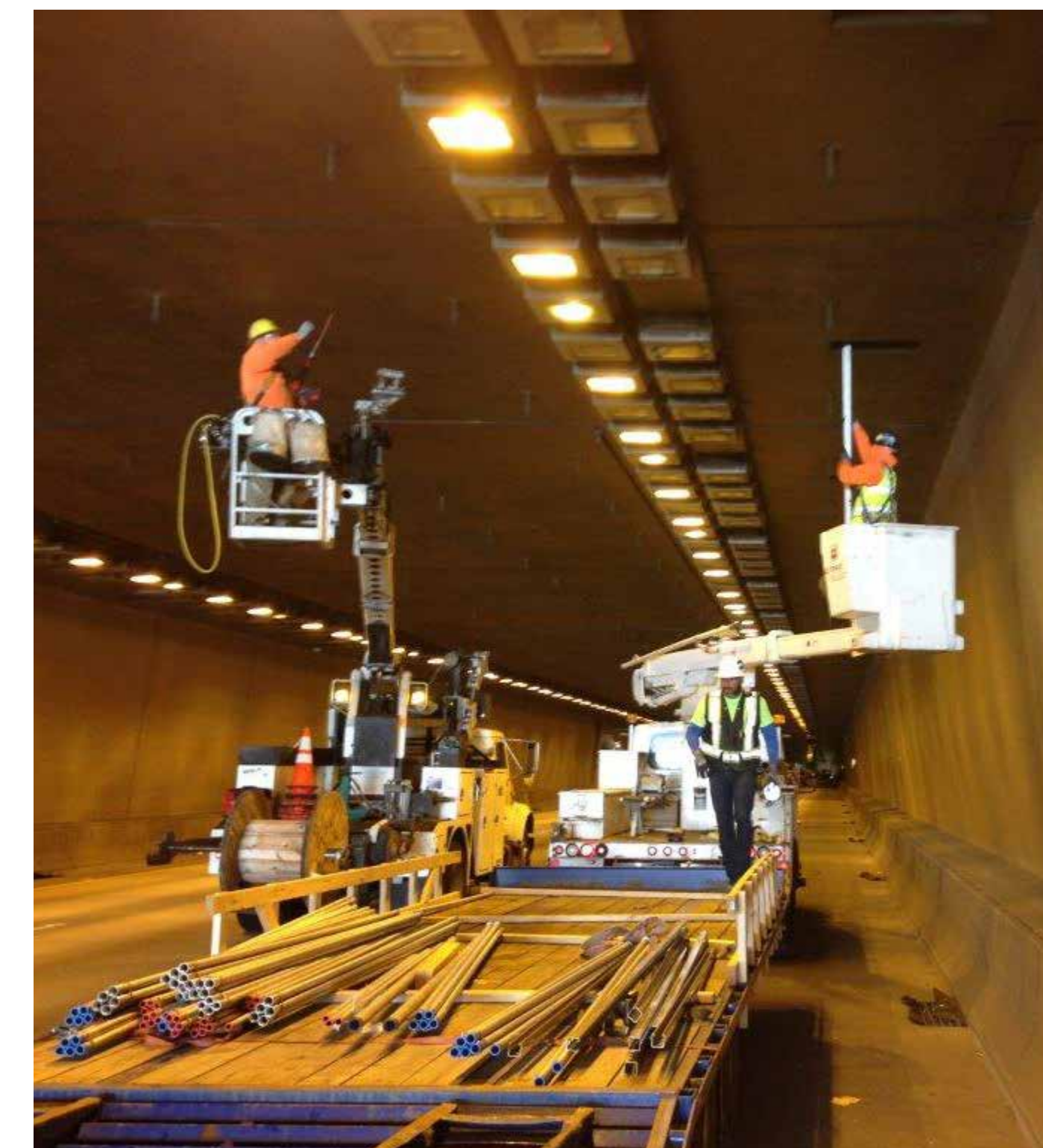
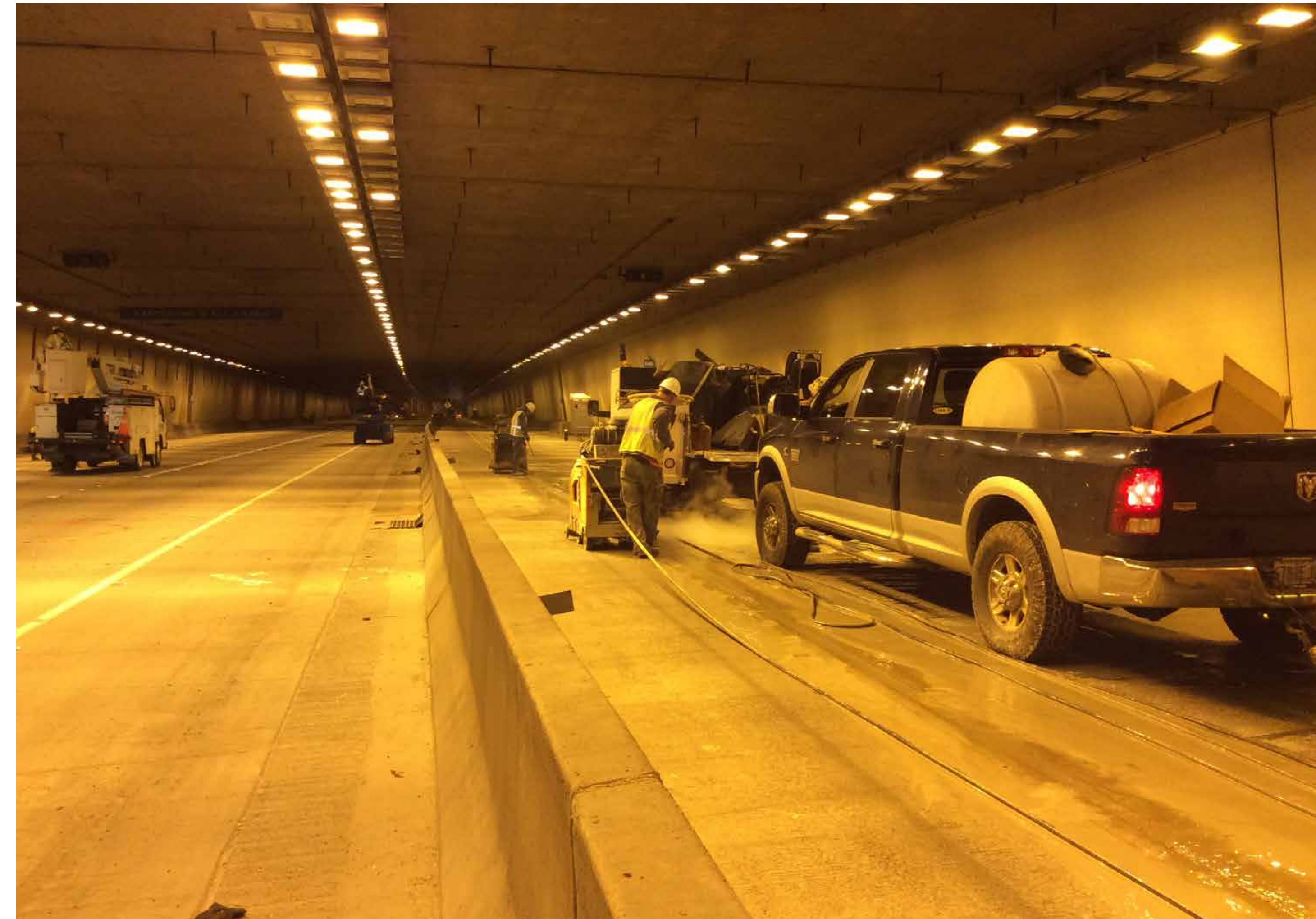
At completion of East Link



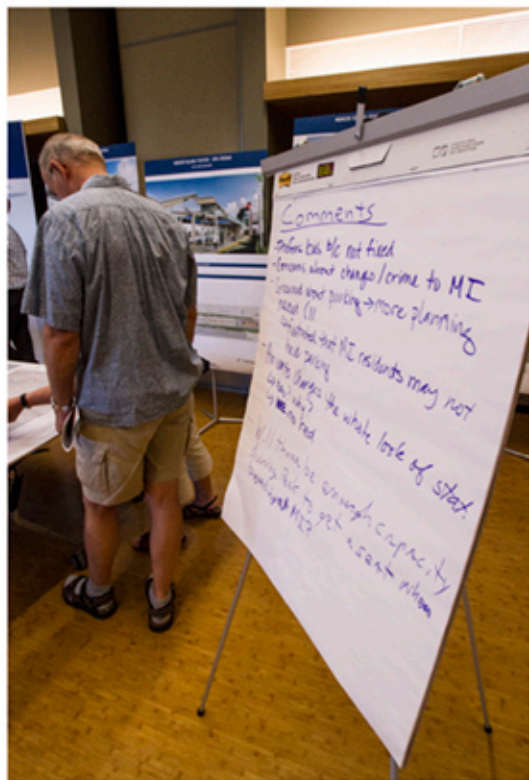
Upcoming I-90 Construction Closures

Stage 3 construction closures

- **The current project:**
 - Extends HOV lanes from Mercer Island to Seattle
 - Upgrades operations and safety systems in the Mount Baker and Mercer Island Tunnels
- **Weekend directional closures of I-90**
 - October 9-12 – WB closure
 - October 23-26 – EB closure
 - November 13-16 – EB closure
 - December 4-7 – WB closure
 - December 18-21 – EB closure
 - 17 more weekend closures in 2016 - 2017 between the months of October to May



Comments



What happens to your comments? Here is the process:

- Immediately upon completion of the listening tour (Oct. 9), there will be a series of meetings between the four partnering agencies: Sound Transit, City of Mercer Island, WSDOT and King County/Metro
- All comments will be reviewed, collected and catalogued by all four partnering agencies
- Preparation of an agreed upon list, or matrix of identified issues, responsible parties, timeline/next steps and a joint development of possible solutions.
- Continual discussions and iterations of the work product (matrix) between all partnering agencies until an agreement is reached
- The final products will be made available to the public and presented at the following meetings, along with leadership at all partnering agencies:
 - October 19 – Mercer Island City Council
 - October 22 – Sound Transit Board of Directors