

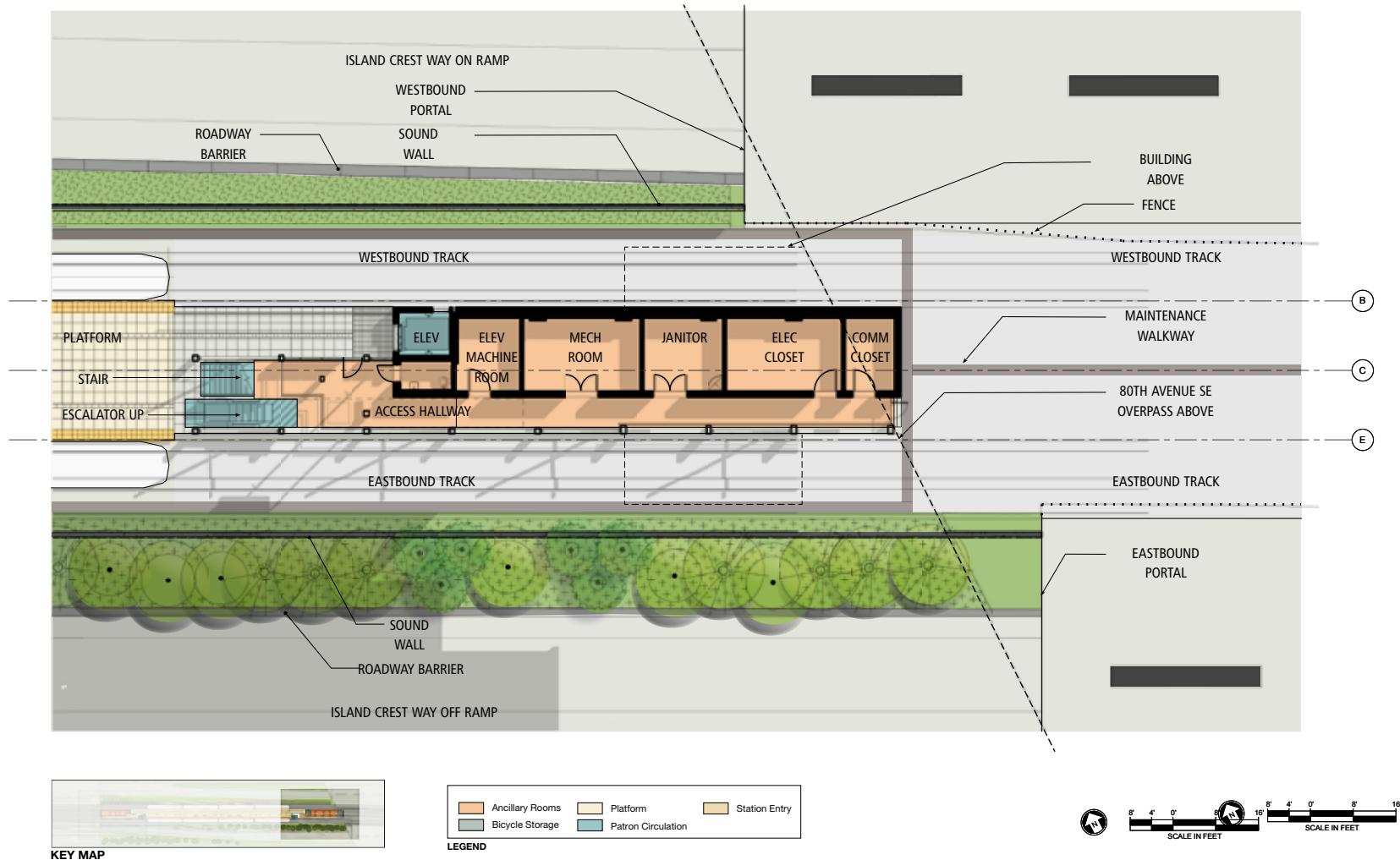
MERCER ISLAND STATION - 60% DESIGN

EAST LINK EXTENSION



EAST ENTRY - CUT AWAY PERSPECTIVE AT PLATFORM LOOKING EAST

EAST ENTRY - PLATFORM LEVEL PLAN



July 2014

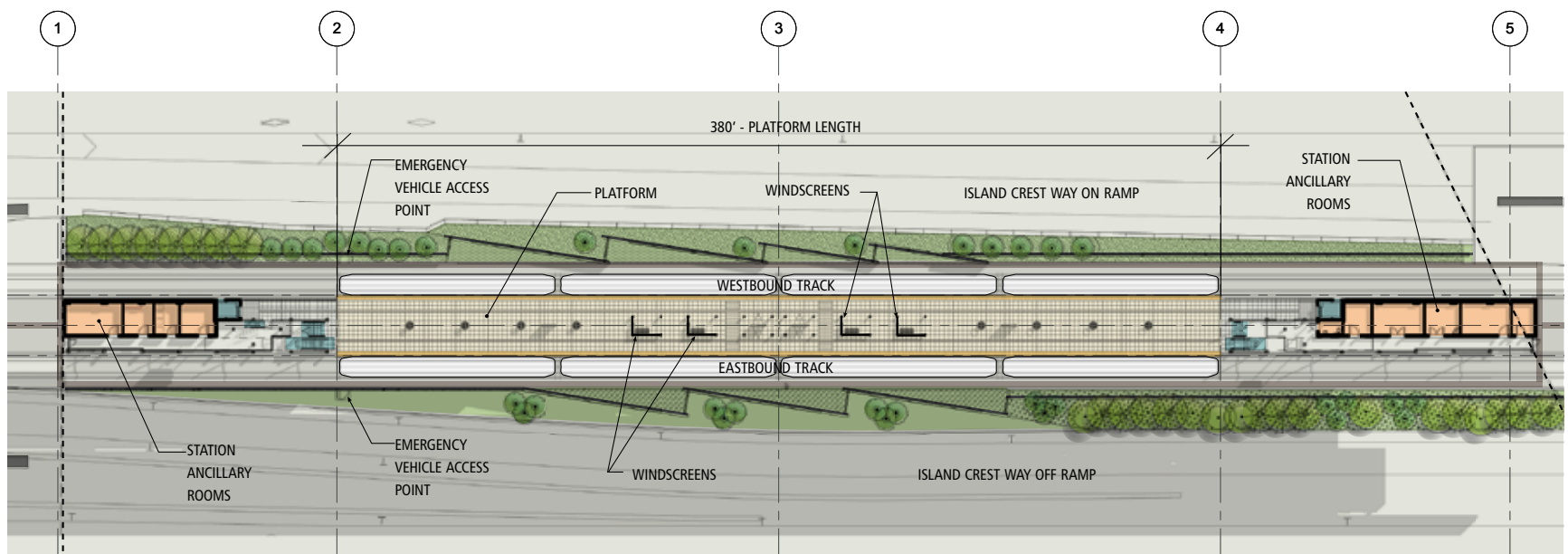
MERCER ISLAND STATION - 60% DESIGN

EAST LINK EXTENSION



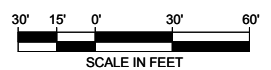
PLATFORM CANOPY - LOOKING EAST AT 80TH AVE SE ENTRY

LONGITUDINAL SECTION & PLATFORM PLAN



	Ancillary Rooms		Platform		Station Entry
	Bicycle Storage		Patron Circulation		Ticketing

LEGEND



July 2014

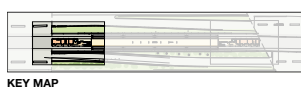
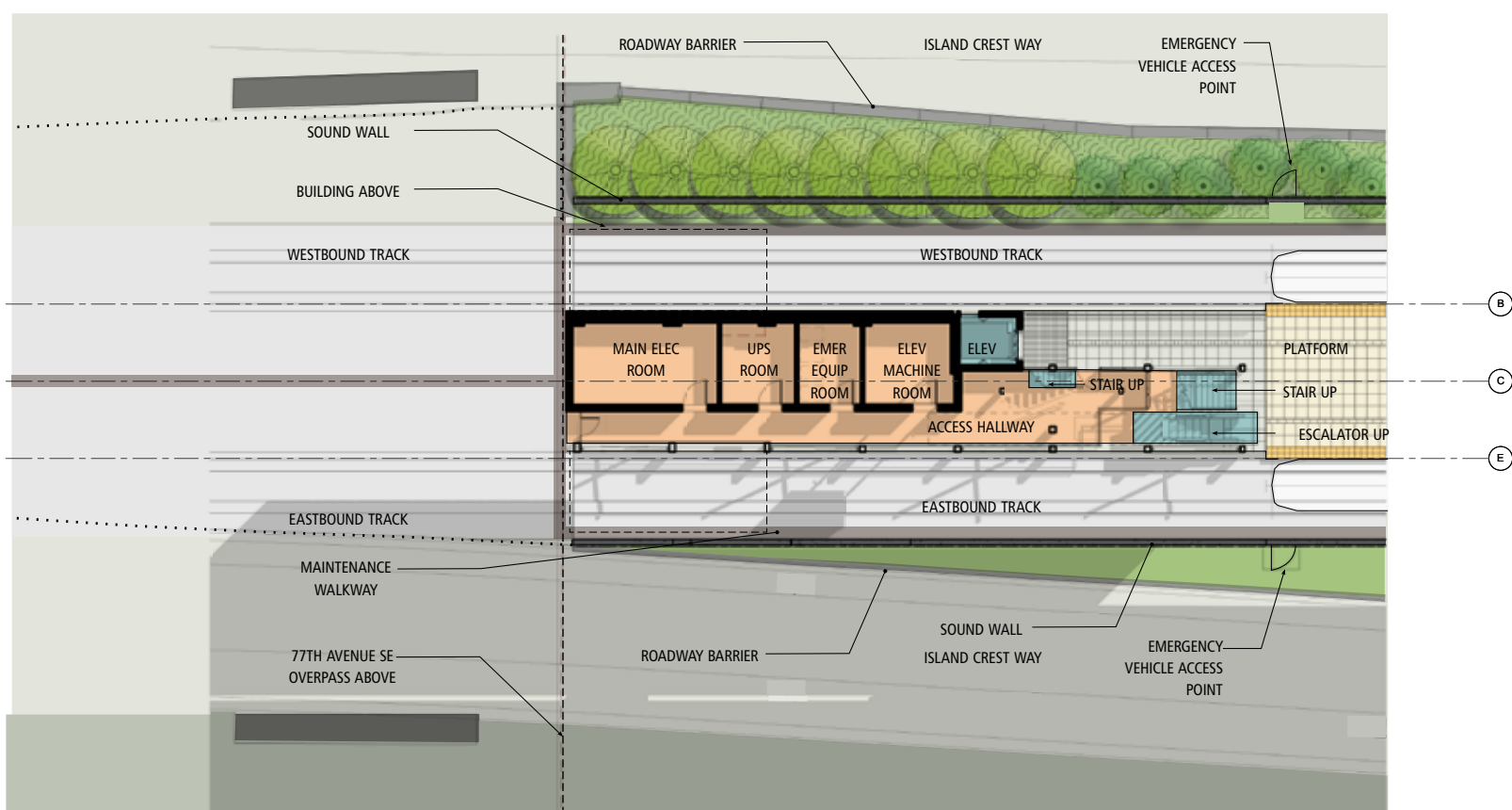
MERCER ISLAND STATION - 60% DESIGN

EAST LINK EXTENSION

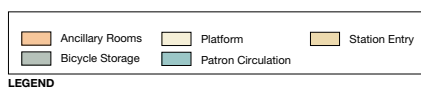


WEST ENTRY - PLATFORM LOOKING WEST

WEST ENTRY - PLATFORM LEVEL PLAN



KEY MAP



LEGEND



SCALE IN FEET

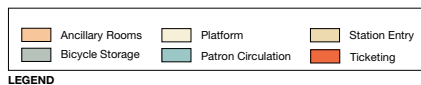
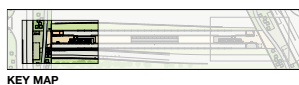
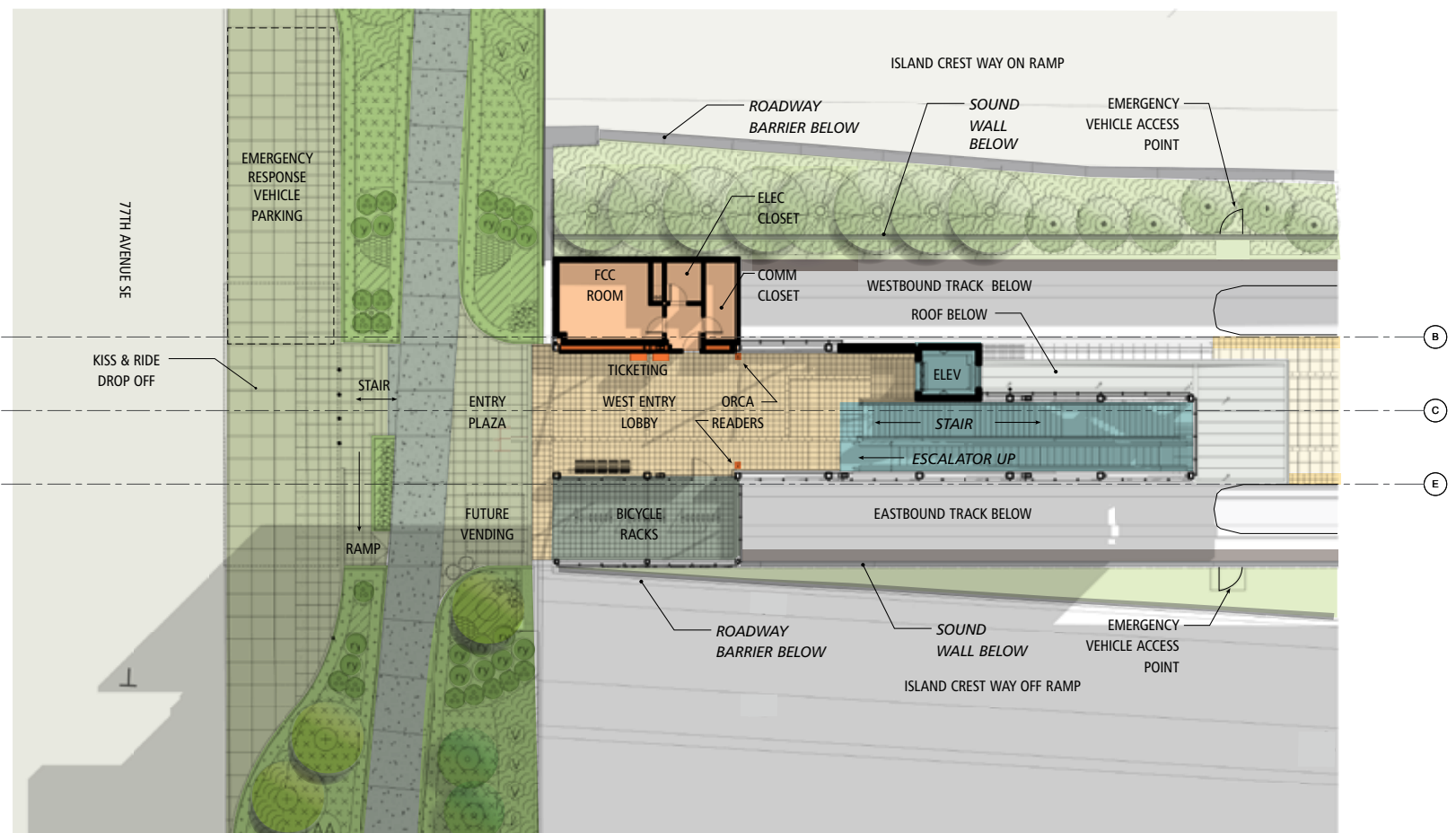
MERCER ISLAND STATION - 60% DESIGN

EAST LINK EXTENSION



WEST ENTRY AT 77TH AVE SE

WEST ENTRY - 77TH AVE SE ENTRANCE PLAN



July 2014

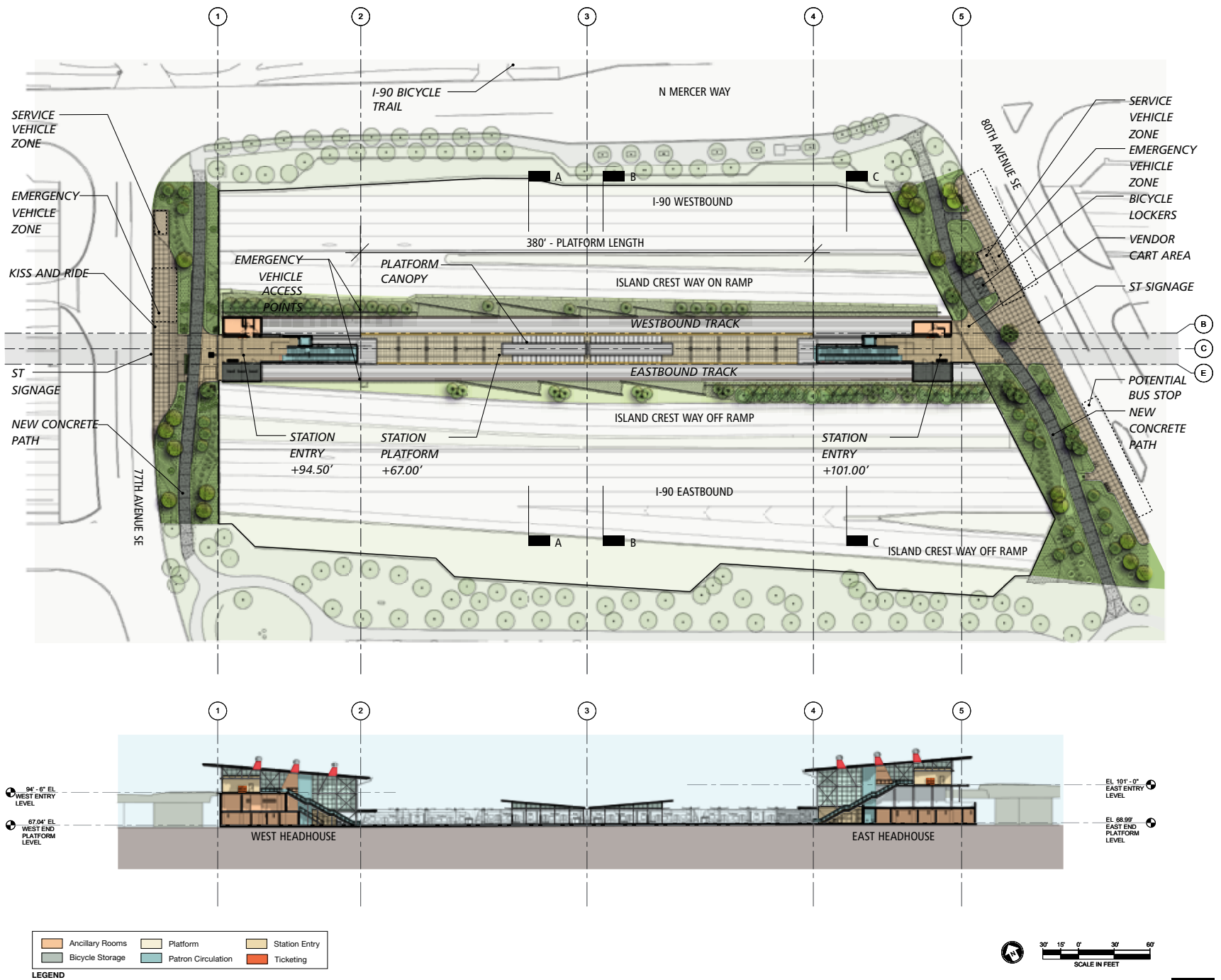
MERCER ISLAND STATION - 60% DESIGN

EAST LINK EXTENSION



CONTEXT PLAN

SITE PLAN



MERCER ISLAND STATION - PLANT MATERIALS

EAST LINK EXTENSION

TREES - EVERGREEN



SHORE PINE
Pinus contorta
var. *contorta*

TREES - DECIDUOUS



RED MAPLE
Acer rubrum



STAGHORN SUMAC
Rhus typhina

SHRUBS



SHRUB SERVICEBERRY
Amelanchier alnifolia



COAST SILK TASSEL
Garrya elliptica



GOLD STAR CINQUEFOIL
Potentilla fruticosa 'Gold Star'



ROSEMARY
Rosmarinus spp.



DAISY BUSH
Senecio greyi



EVERGREEN HUCKLEBERRY
Vaccinium ovatum



NORTHERN BAYBERRY
Myrica pennsylvanica



OREGON GRAPE
Mahonia aquifolium



SALAL
Gaultheria shallon



OCEAN SPRAY
Holodiscus discolor



RED FLOWERING CURRANT
Ribes sanguineum

PERENNIALS AND GRASSES



SWORD FERN - *Polystichum munitum*



LADY FERN - *Athyrium filix-femina*



DEER FERN - *Blechnum spicant*



DOUGLAS IRIS - *Iris douglasiana*



BLUE FLAX - *Linum perenne*



'MORNING LIGHT' MAIDEN GRASS
Miscanthus sinensis 'Morning Light'



BABY BLISS FLAX LILY
Dianella revoluta 'DTN03'

GROUNDCOVERS



KINNIKINNICK
Arctostaphylos uva-ursi



LOW OREGON GRAPE
Mahonia nervosa



SPREADING STONECROP
Sedum divergens



BIRCH LEAF SPIREA - *Spiraea betulifolia* 'Tor'

July 2014



MERCER ISLAND STATION - START OPPORTUNITIES

EAST LINK EXTENSION



IT TAKES A VILLAGE

The Sound Transit Art Program (STart) works with the design team to identify art opportunities.

The Art Program works with community leaders and stakeholders to find artists best suited to accentuate the neighborhood's unique qualities. The selections are made from a roster gathered from a national call.

The artist works with the community and the design team to create artwork that both reflects the neighborhood's identity and integrates with the station.



JUNE 2014

Art Opportunities



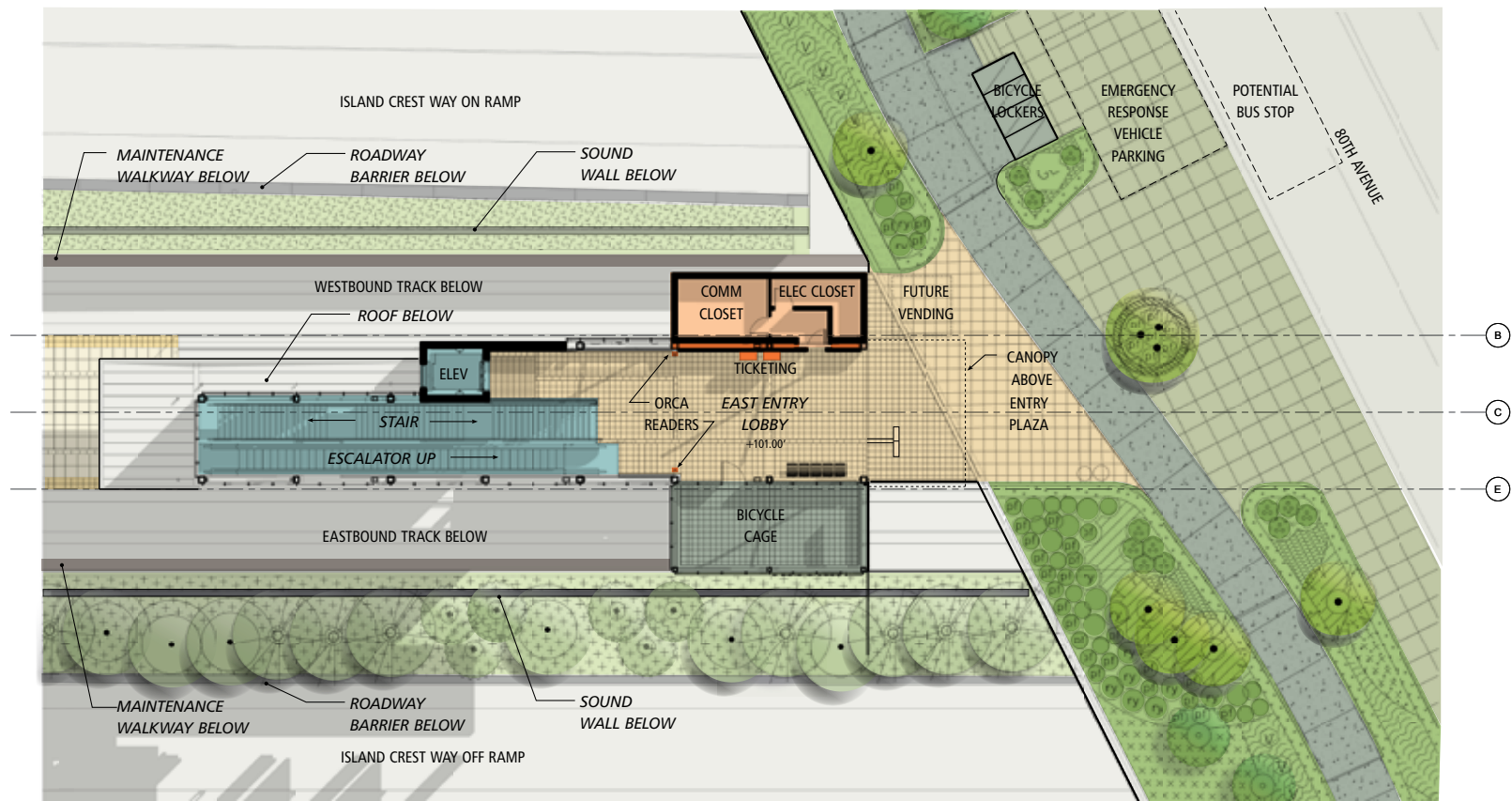
MERCER ISLAND STATION - 60% DESIGN

EAST LINK EXTENSION



EAST ENTRY AT 80TH AVE SE

EAST ENTRY - 80TH AVE SE ENTRANCE PLAN



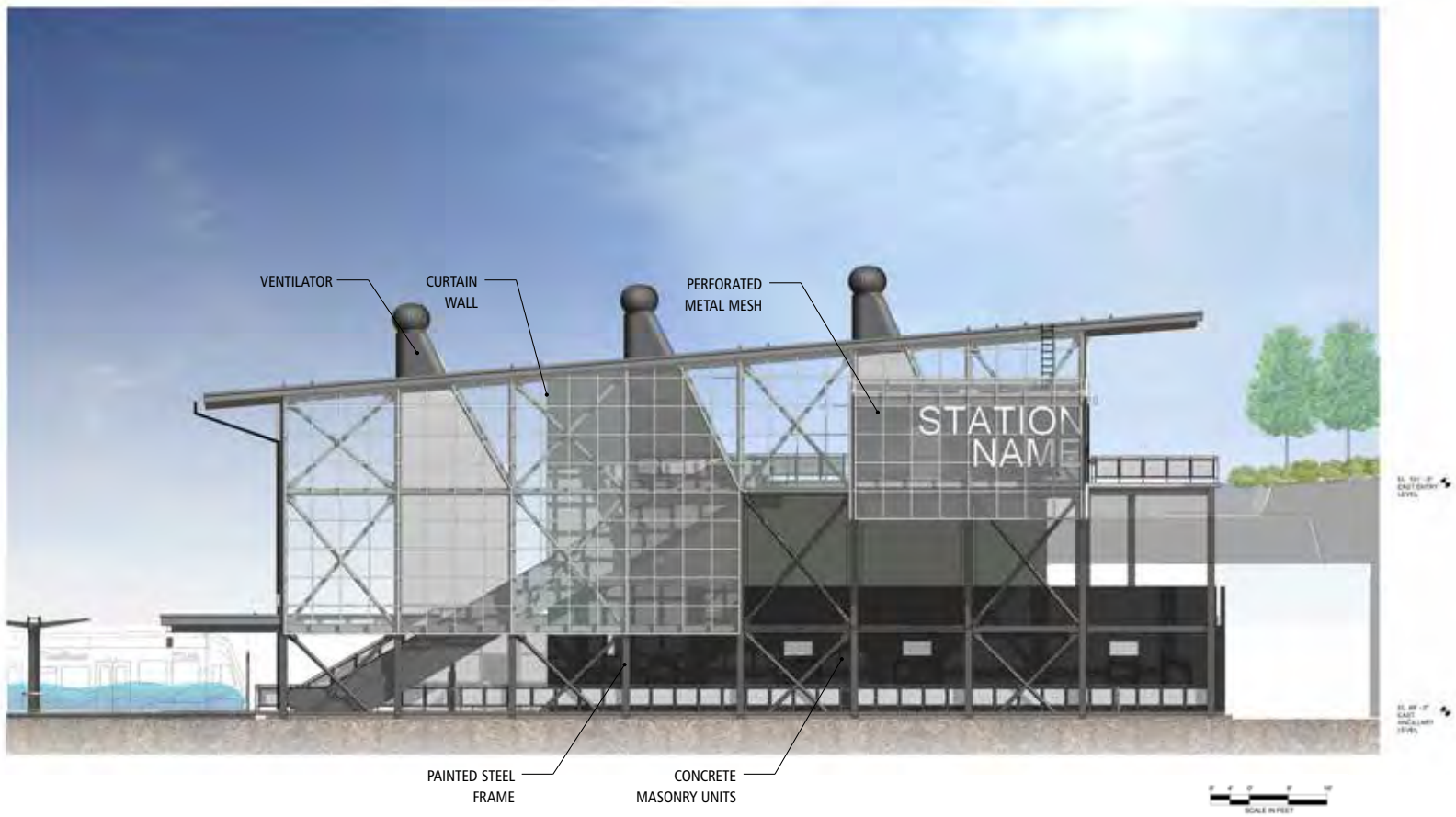
LEGEND		
 Ancillary Rooms	 Platform	 Station Entry
 Bicycle Storage	 Patron Circulation	 Ticketing



July 2014

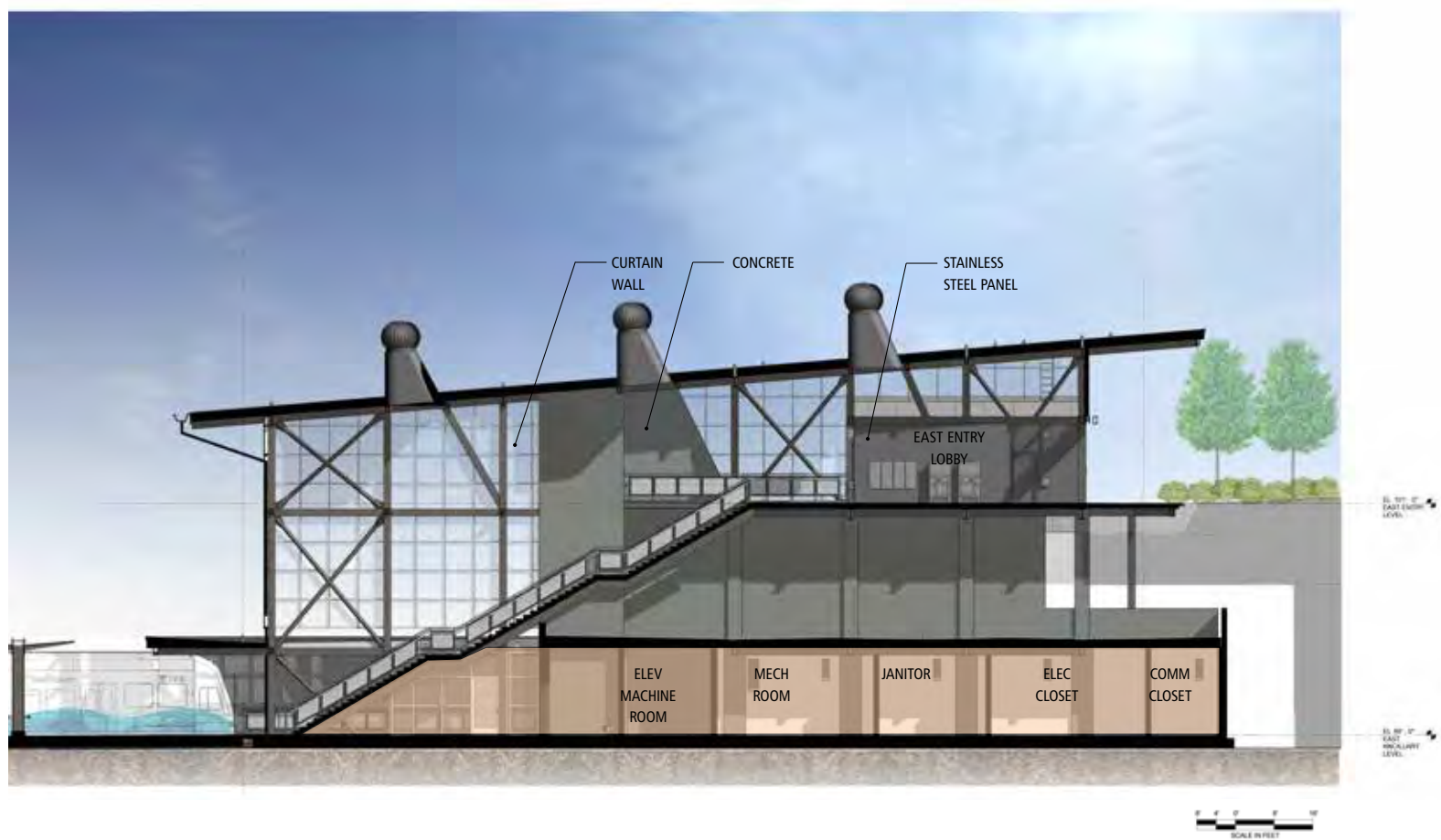
MERCER ISLAND STATION - 60% DESIGN

EAST LINK EXTENSION



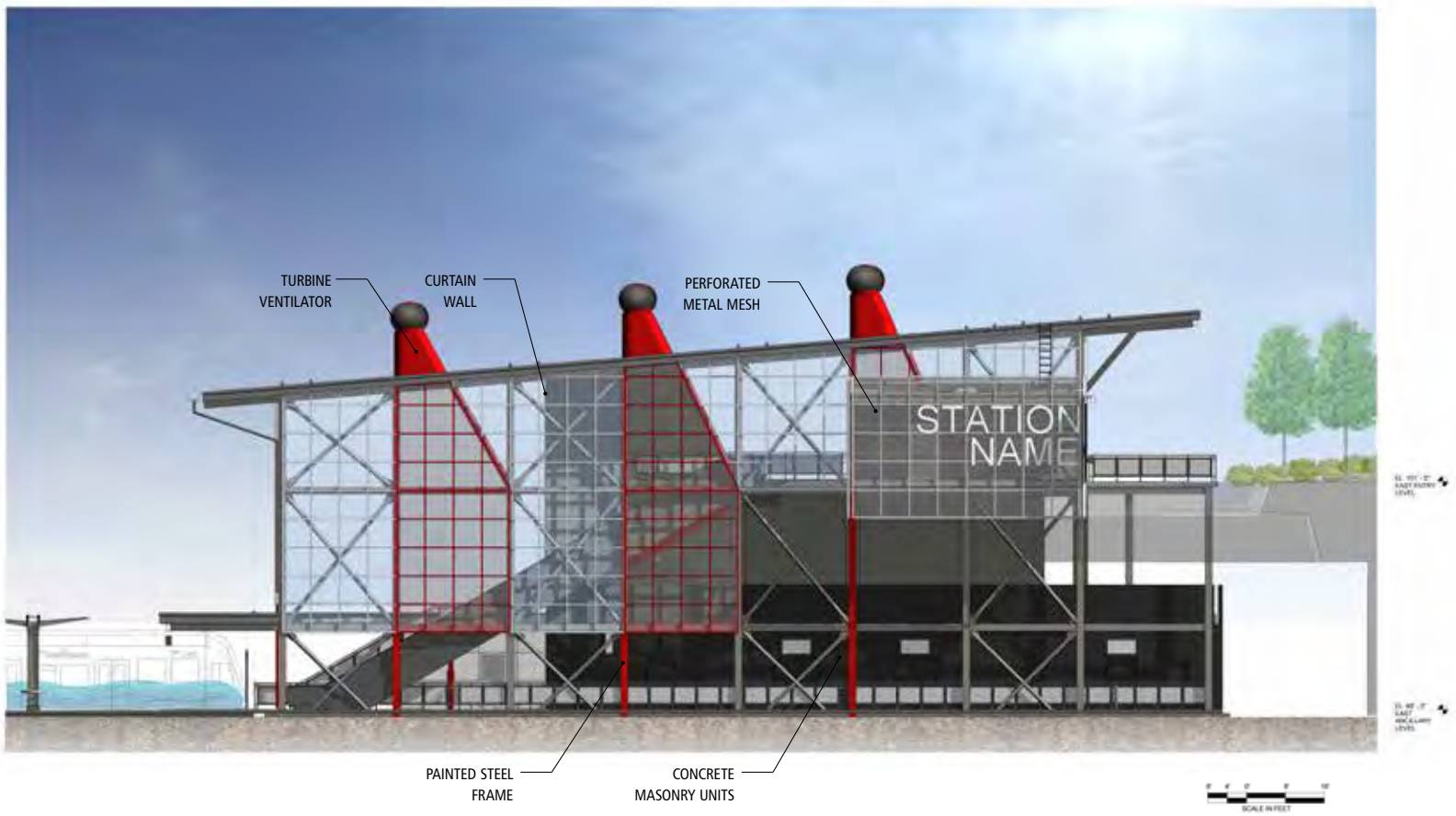
EAST ENTRY - SOUTH ELEVATION

EAST ENTRY - LONGITUDINAL SECTION



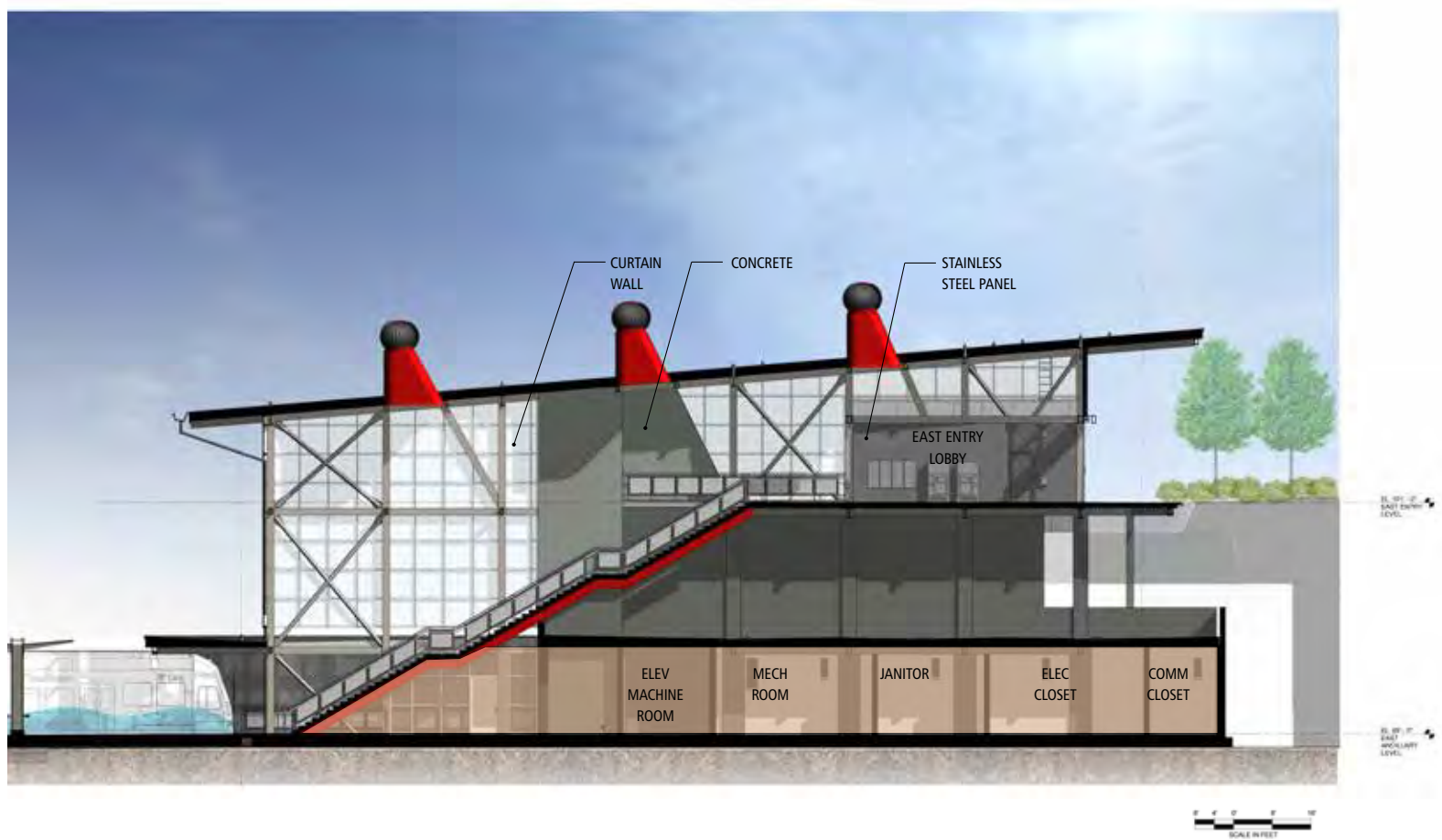
MERCER ISLAND STATION - 60% DESIGN

EAST LINK EXTENSION



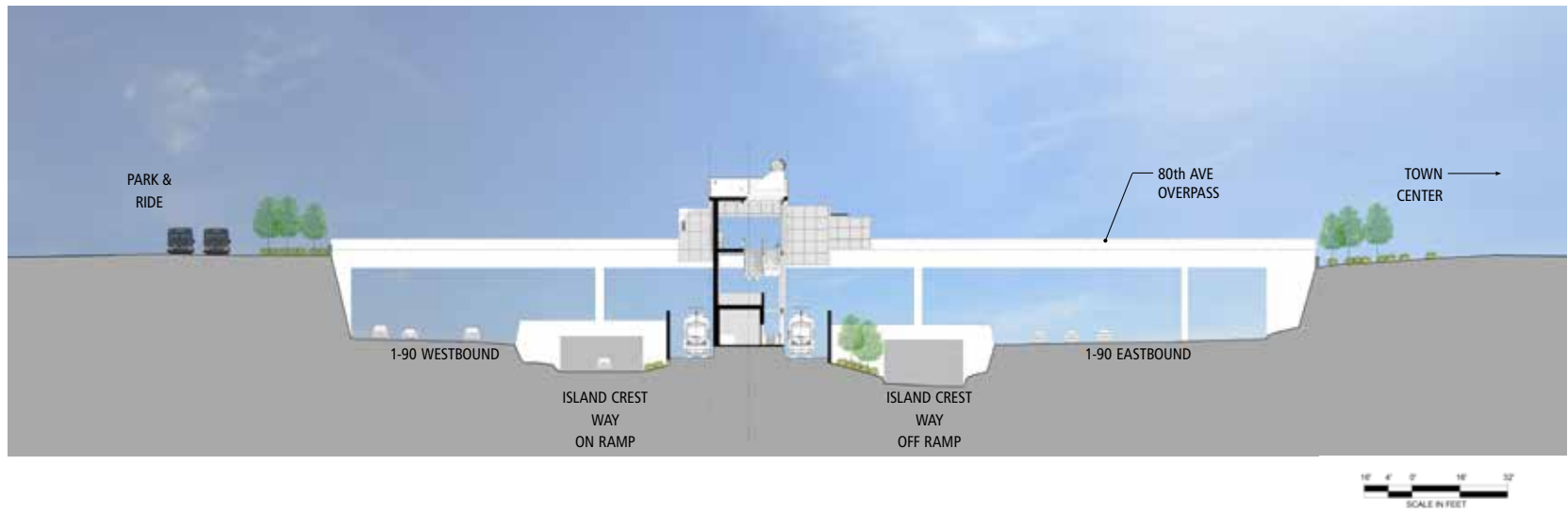
EAST ENTRY - SOUTH ELEVATION

EAST ENTRY - LONGITUDINAL SECTION

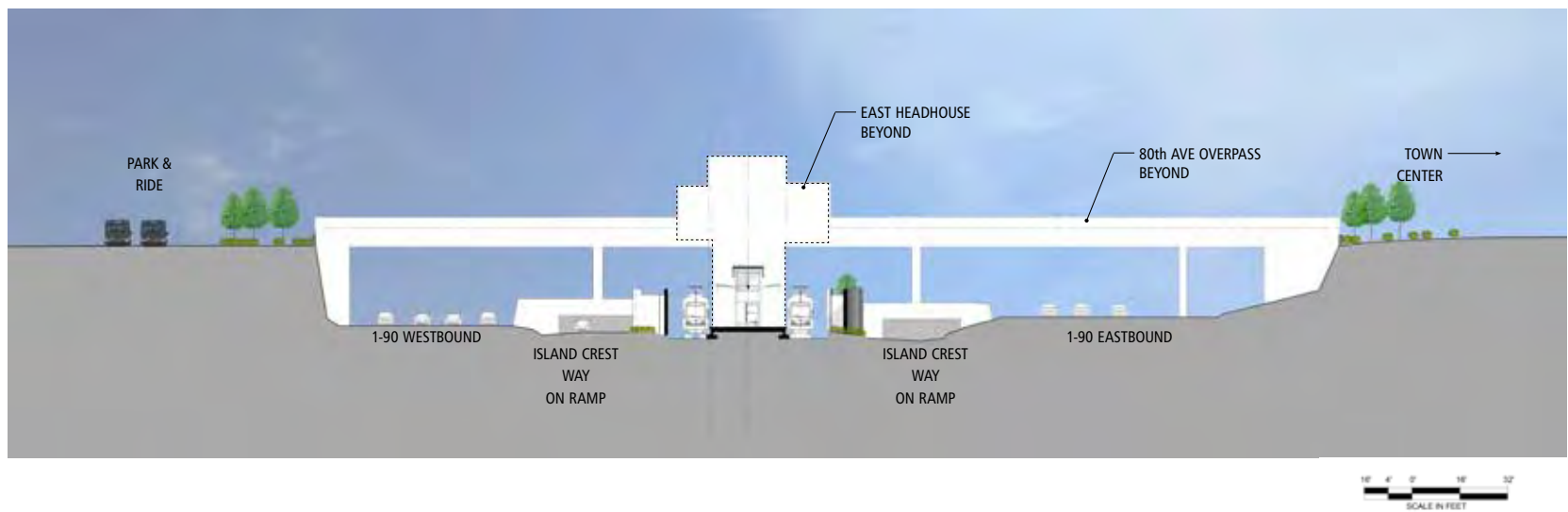


MERCER ISLAND STATION - 60% DESIGN

EAST LINK EXTENSION

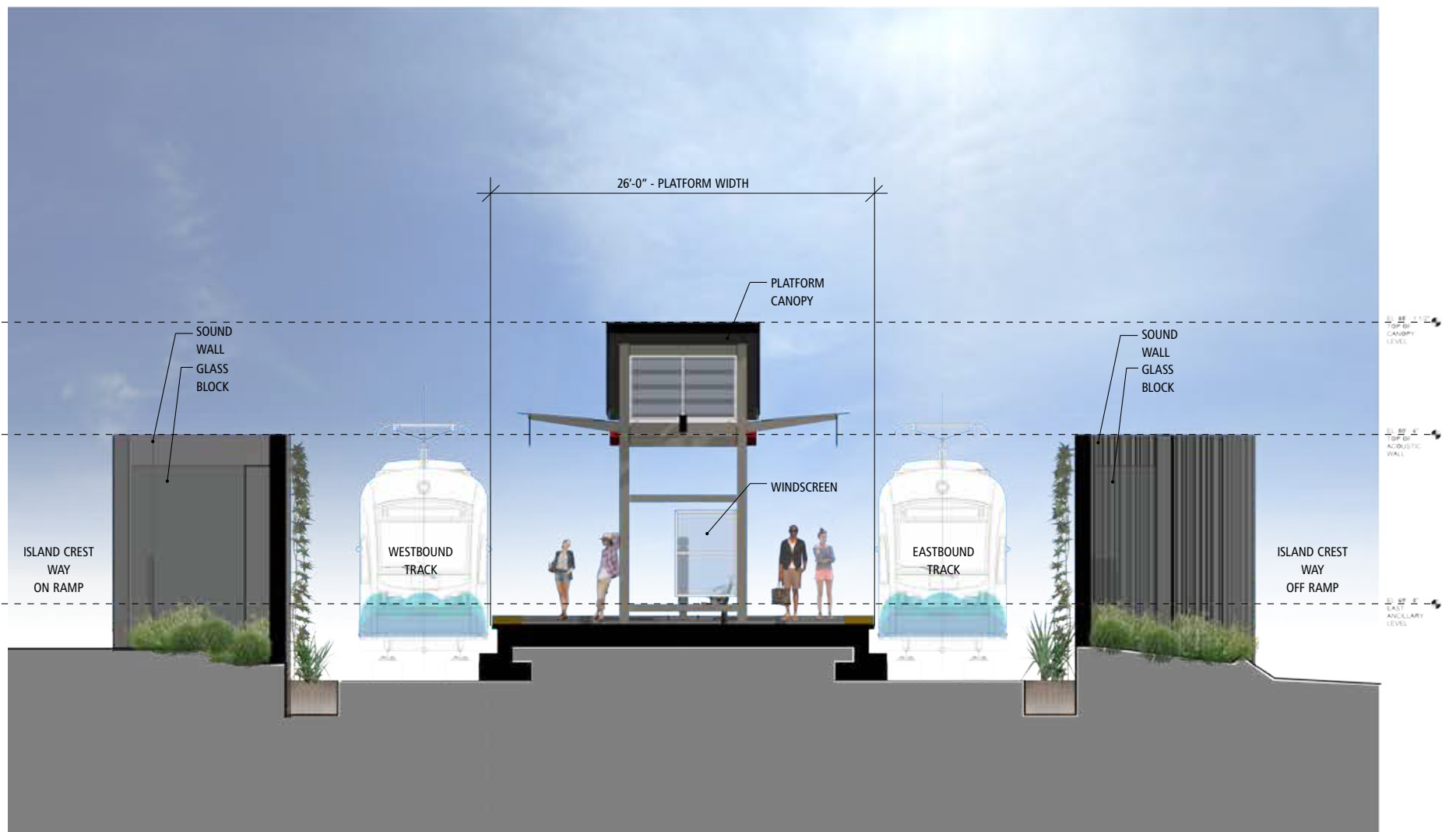


SITE CROSS SECTION AT EAST ENTRY



SITE CROSS SECTION AT PLATFORM

ENLARGED CROSS SECTION AT PLATFORM



SUPPORTING STRUCTURES

EAST LINK EXTENSION

The safe and efficient operation of a light rail system relies upon a number of components in addition to the track, guideway and stations. These essential system elements house the equipment needed to supply power to the vehicles and ensure that warning signals and communications equipment function properly. Sound Transit will work through the 60% design milestone to identify the locations of these structures and screening where appropriate.

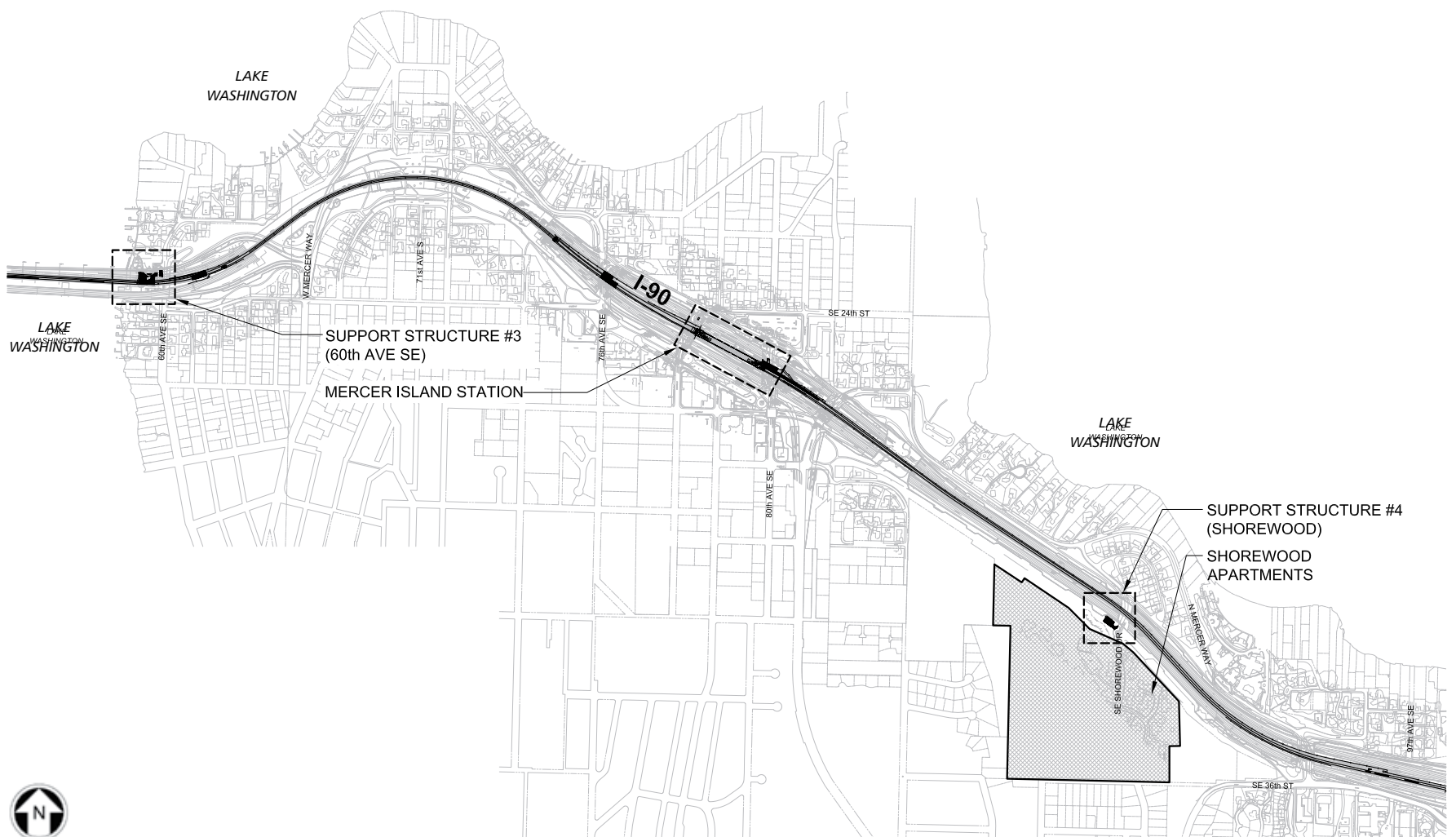
Traction Power Substation (TPSS) are located along the alignment and serve to convert electric power needed to operate the light rail

Overhead Contact System (OCS) distribute power supplied from the TPSS to the light rail vehicles

Signal buildings house equipment used to control safety and operational signals



Examples of how architectural treatments and artwork may be used help screen ancillary structures

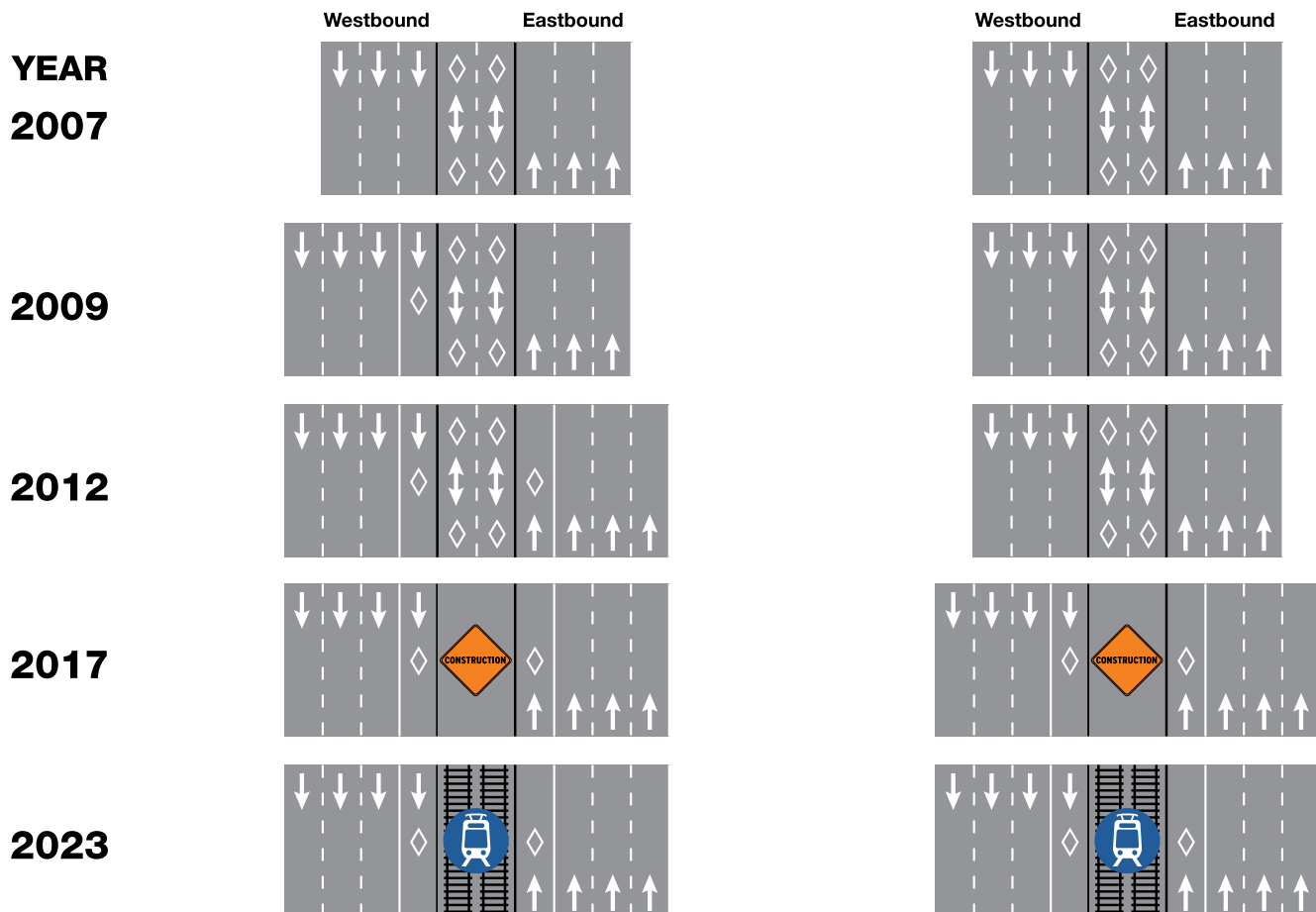


I-90 CONSTRUCTION TIMELINE

TWO-WAY TRANSIT & EAST LINK EXTENSION PROJECTS

Bellevue Way to 80th Ave. SE

80th Ave. SE to Rainier Ave.



JULY 2014

