

# TRANSIT PLANNING FOR THE FUTURE



## GETTING YOU WHERE YOU NEED TO GO IN THE I-90 CORRIDOR

### Tonight's meeting purpose:

- Provide you with information about goals and planning processes over the coming years that will shape future transit service, culminating in route-specific decisions 2-3 years before East Link light rail opens
- Give updates on the final design process and future construction of East Link light rail
- Share information on design objectives for Mercer Island and South Bellevue light rail stations that will facilitate transfers between trains and buses

### Agenda

#### 6-8 p.m. Open house

Meet with project staff and view display boards and graphics featuring information about our efforts to coordinate transit service in advance of light rail opening in 2023.

#### 7 p.m. Overview presentation

#### 8 p.m. Meeting adjourns

Your comments will be reflected in a public involvement summary and provided to Sound Transit and King County Metro staff, the Sound Transit Board and the King County Council.

To learn more, visit us on the web at [soundtransit.org/Projects-and-Plans/I-90-Transit-Integration](http://soundtransit.org/Projects-and-Plans/I-90-Transit-Integration)

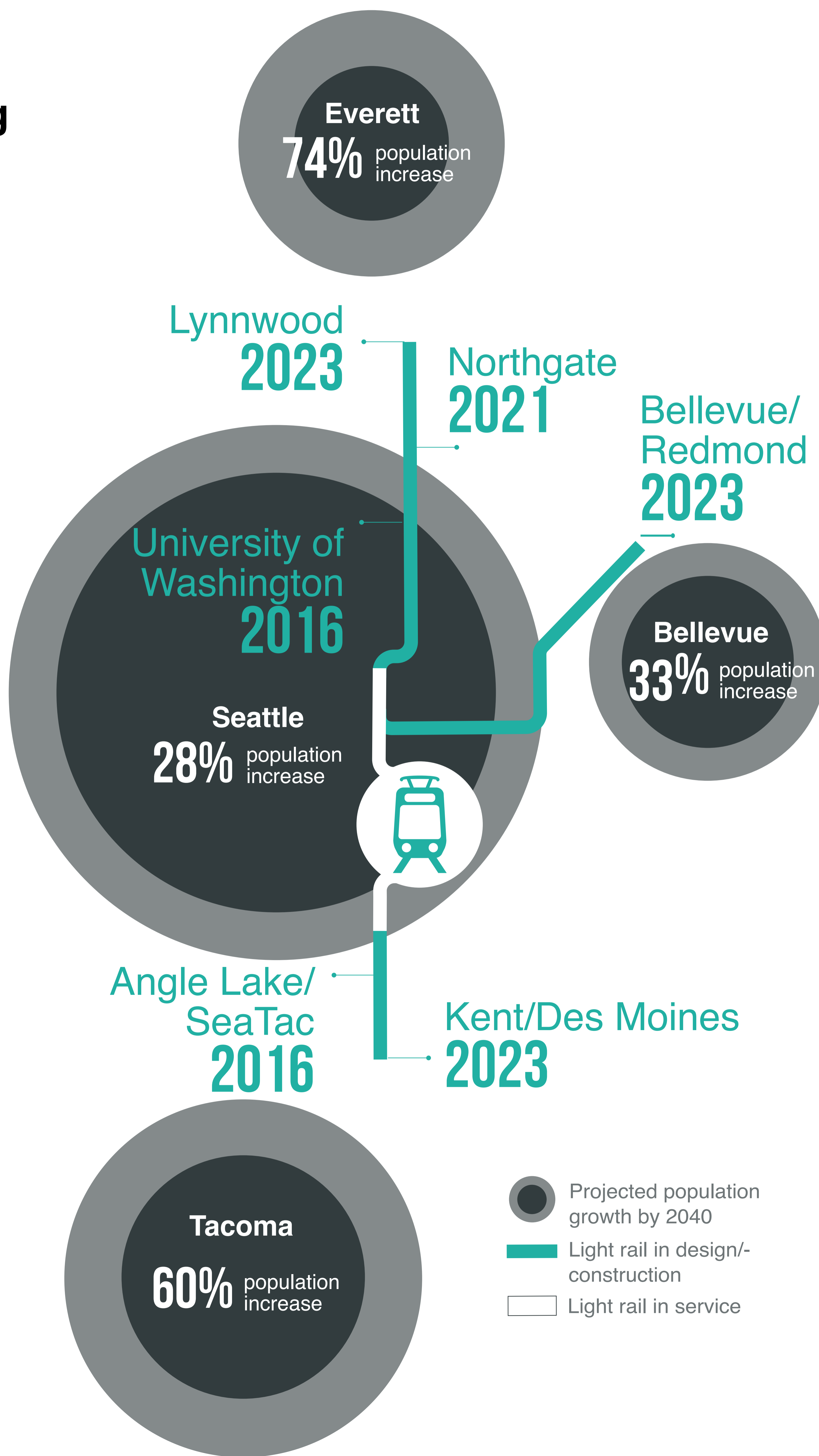


## OUR REGION IS CHANGING

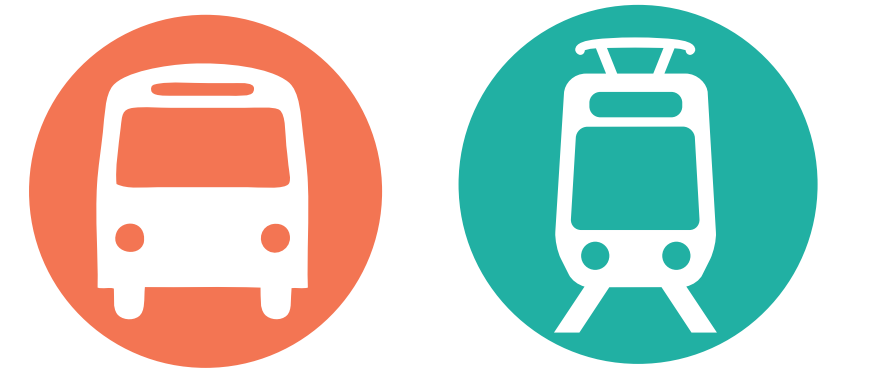
### Link light rail Connections for growing communities

With the region's population forecasted to increase 30 percent by 2040, our current transportation system will face increased congestion, capacity constraints, and limited resources. Traffic congestion and delays on I-90 and Seattle surface streets are expected to increase significantly.

Expanding Link light rail service provides added capacity and reliability to our transit system to meet the region's growing needs. The light rail extensions underway were approved by the region's voters in 2008.



# TRANSIT PLANNING FOR THE FUTURE



## EAST LINK OVERVIEW



**Length:** 14 miles

**Ride times:**

Mercer Island to University of Washington: 20 minutes

South Bellevue to Sea-Tac Airport: 50 minutes

Overlake Transit Center to Bellevue Transit Center: 10 minutes

**Rider projection:** About 50,000 riders will use East Link every day by 2030

**Budget:** \$2.8 billion (2010 \$)

**Start of service:** Targeted 2023

2006-2011

Planning and environmental review

2011-2015

Final design  
(we are here)

2015-2022

Construction

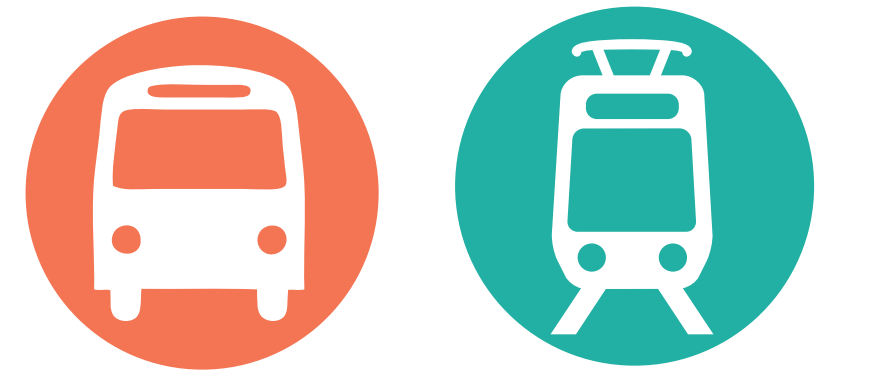
Targeted 2022

Testing & pre-operations

Targeted 2023

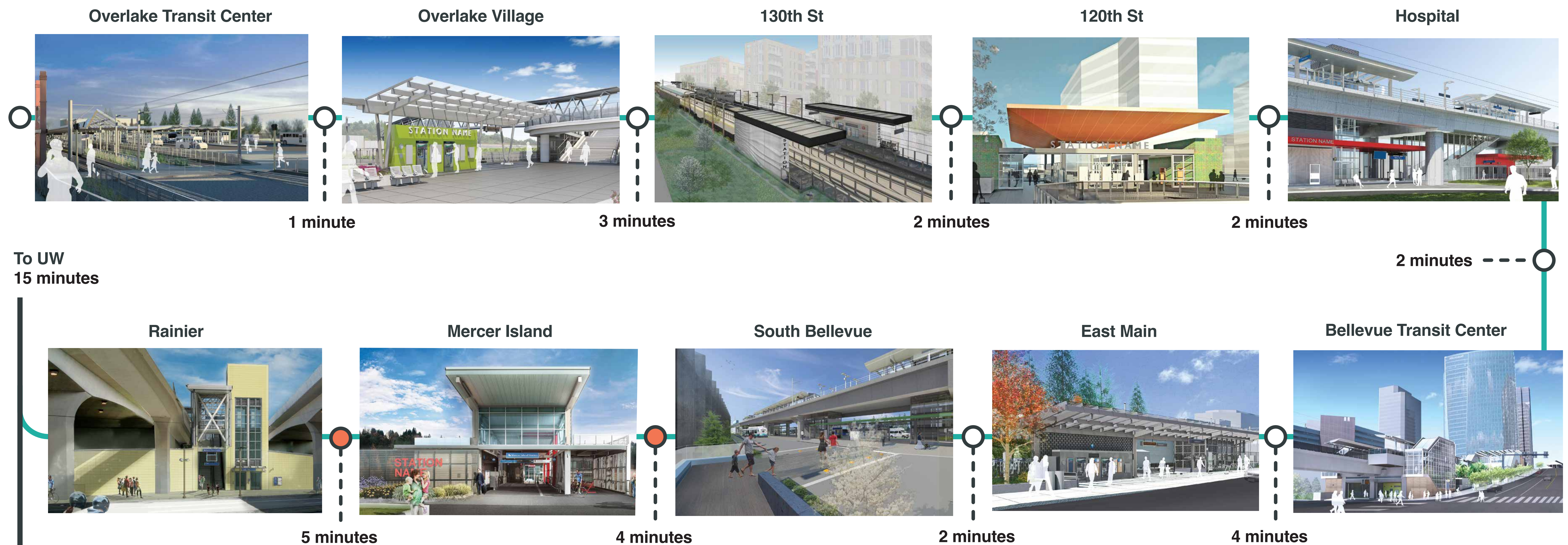
East Link in service

# TRANSIT PLANNING FOR THE FUTURE



## WHAT DOES EAST LINK LOOK LIKE?

### STATION DESIGNS AND TRAVEL TIME BETWEEN STATIONS



### Design milestones



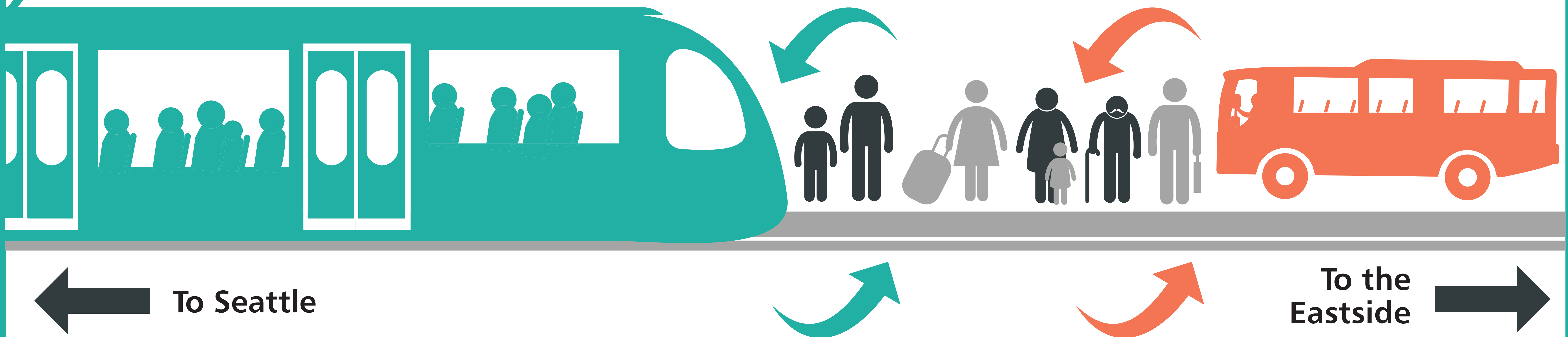
# TRANSIT PLANNING FOR THE FUTURE



## OPPORTUNITIES FOR TRANSIT INTEGRATION

### In 2023, East Link light rail and Metro bus will:

- Integrate bus and rail services to complement one another
- Improve operational efficiencies
- Improve customer experience
- Reduce travel time
- Provide reliable and frequent service



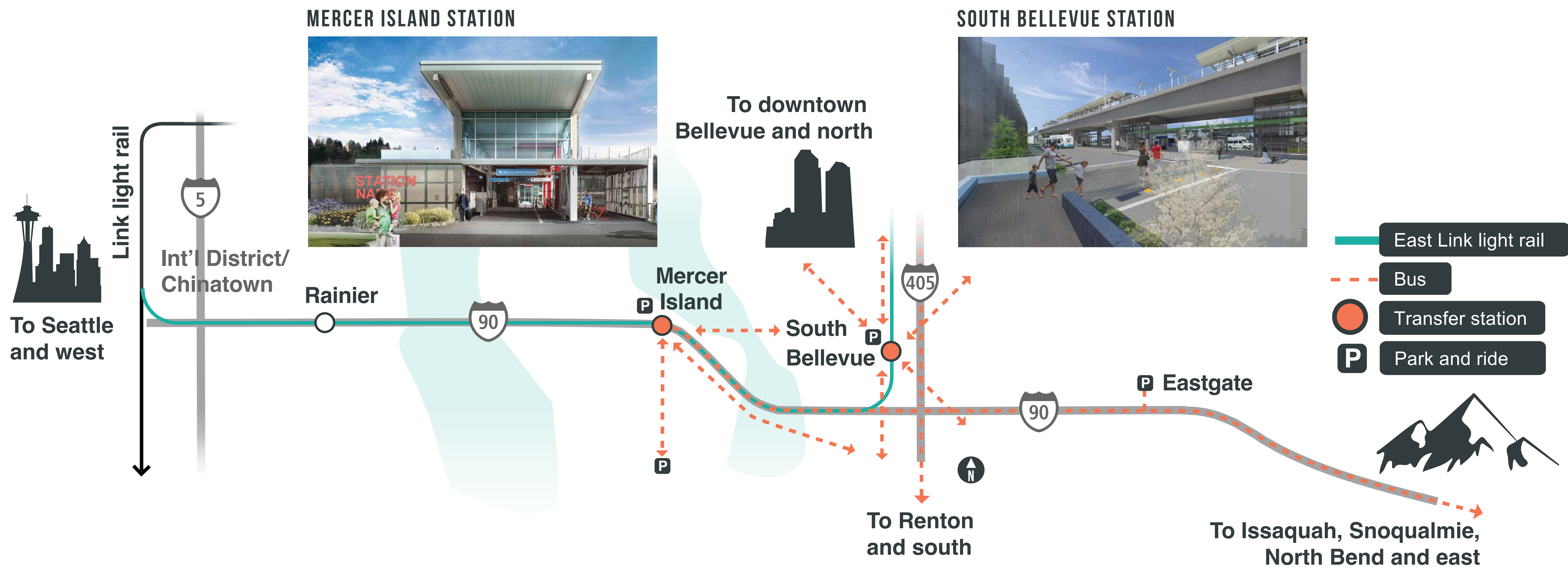
August 2014

# TRANSIT PLANNING FOR THE FUTURE



## INTEGRATED SERVICES WILL COMPLEMENT ONE ANOTHER

Sound Transit and King County Metro are designing facilities at South Bellevue and Mercer Island to maximize access to congestion-free rail service.



August 2014

# TRANSIT PLANNING FOR THE FUTURE



## EFFICIENT TRANSIT SERVICE

### Integrated light rail and bus service will:

- Keep buses out of rising congestion
- Avoid duplicative service across Lake Washington
- Provide reliable travel times between Seattle and Mercer Island
- Provide potential savings in bus hours for reinvestment in increased I-90 park-and-ride service



# TRANSIT PLANNING FOR THE FUTURE



## IMPROVED CUSTOMER EXPERIENCE

- Easy connections between bus and light rail
- Trains every 8 minutes during peak commutes
- Station design and amenities to provide:
  - Good lighting
  - Clear sight lines
  - ADA accessibility
  - Emergency call boxes
  - Real-time travel updates
  - Overhead weather protection
  - Off-board payment





# TRANSIT PLANNING FOR THE FUTURE



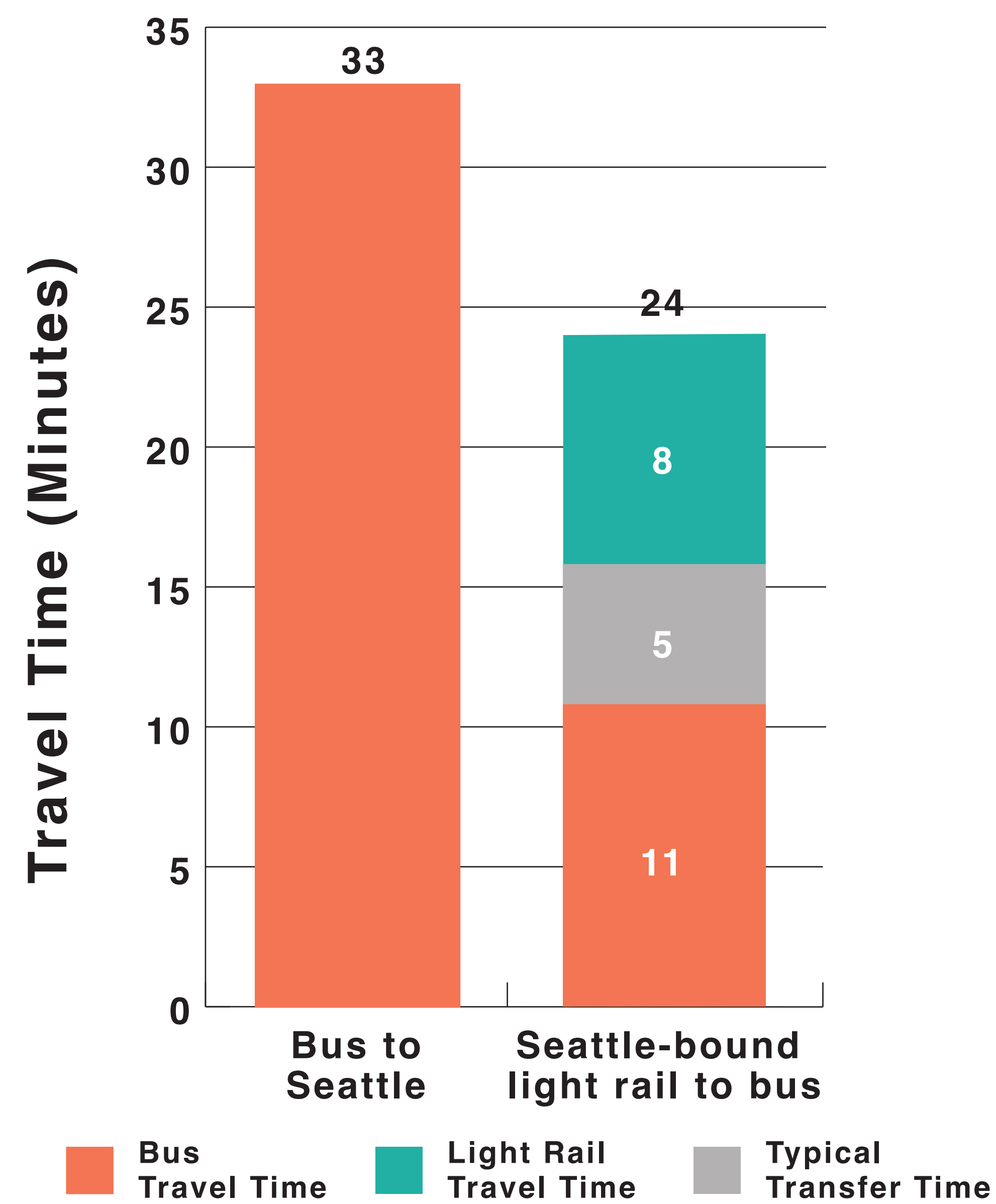
## REDUCED TRAVEL TIMES

Beginning with East Link construction, bus routes serving the Eastside will no longer be able to access the Downtown Seattle Transit Tunnel, which will be dedicated entirely to rail. Bus-rail integration avoids substantially increased bus travel times caused by rising congestion.



### Sample trip:

Eastgate to Downtown Seattle (University St.)



**Early Service**  
5:00 to 6:00 AM

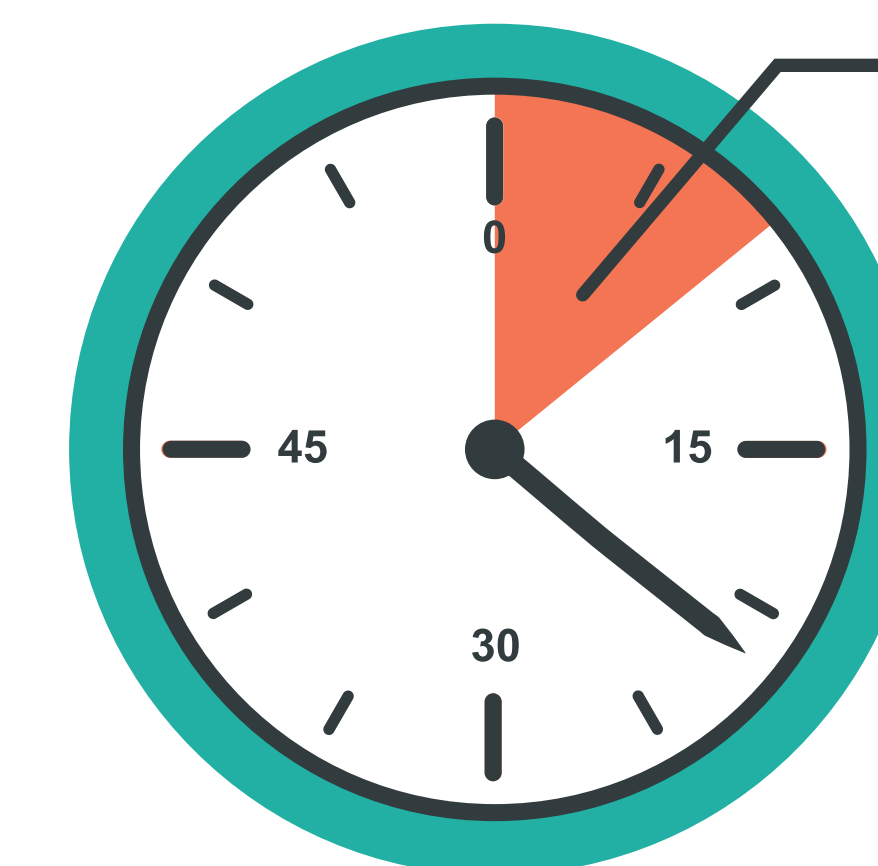
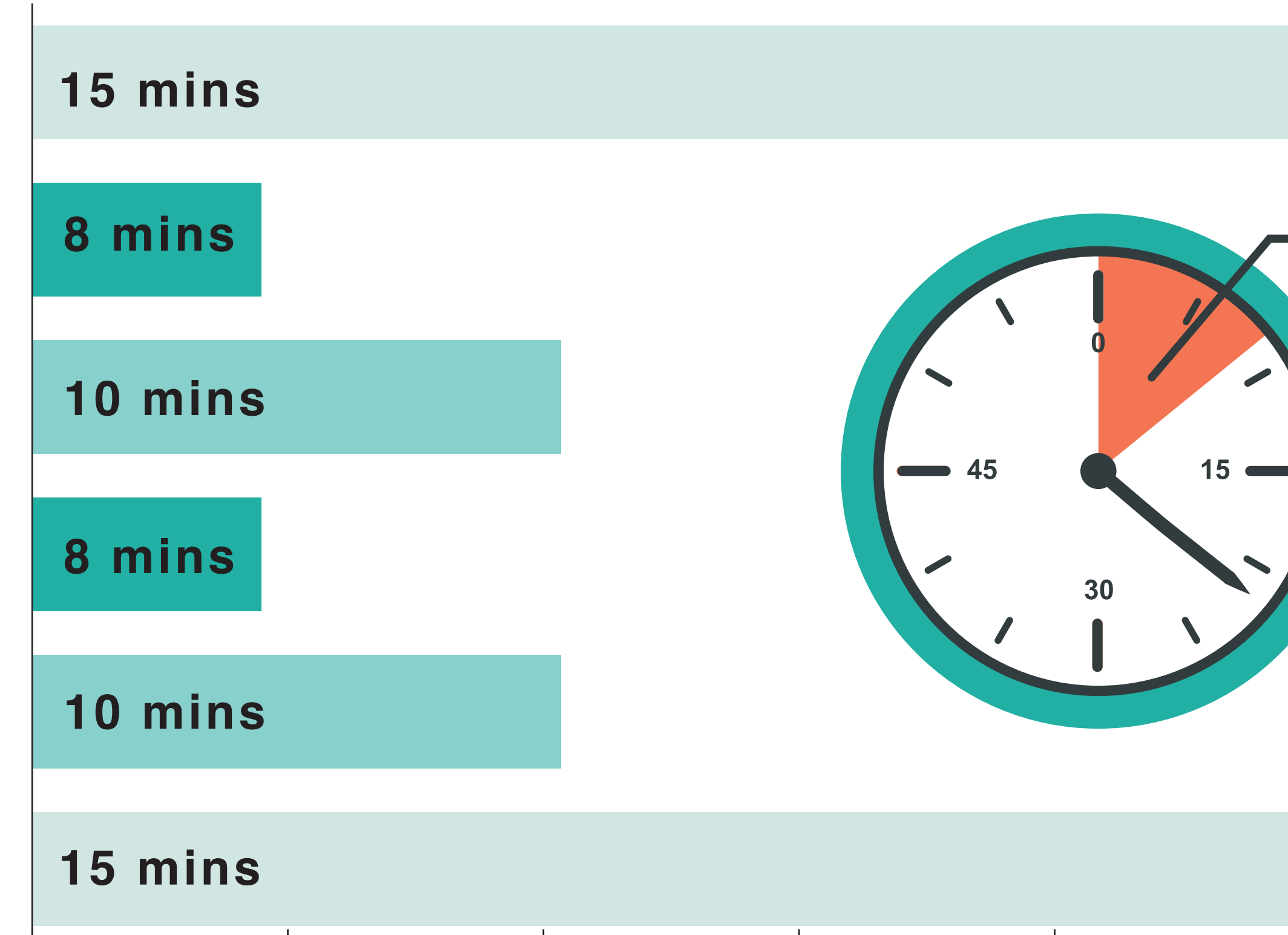
**AM Peak Service**  
6:00 to 8:30 AM

**Mid-Day Service**  
8:30 AM to 3 PM

**PM Peak Service**  
3 PM to 6:30 PM

**Evening Service**  
6:30 PM to 10 PM

**Late Service**  
10 PM to 1 AM



**8 MINUTE**

Peak light rail frequencies

**55 MPH**

Speed of light rail crossing the I-90 floating bridge

Time Between Trains (Minutes)

# TRANSIT PLANNING FOR THE FUTURE



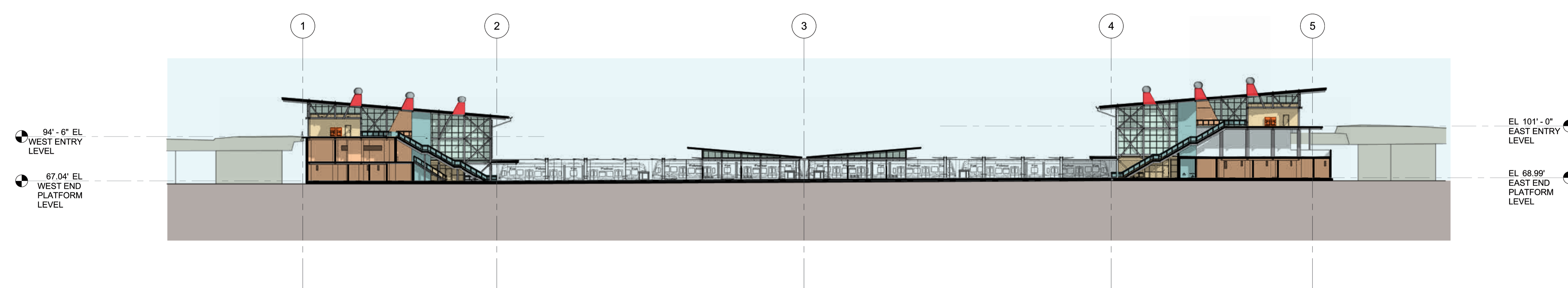
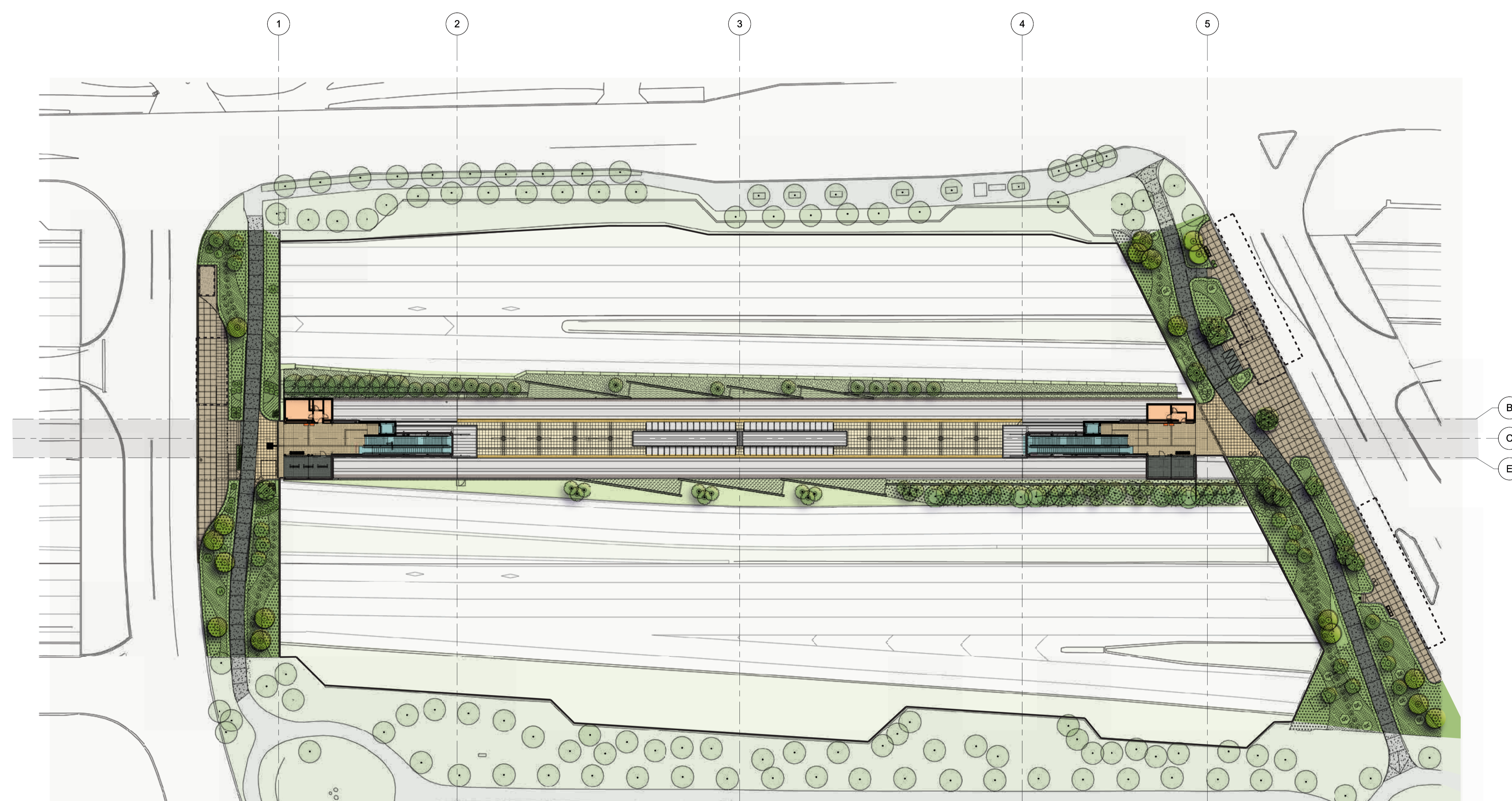
## MERCER ISLAND STATION 60% FINAL DESIGN



WEST ENTRY AT 77TH AVE SE

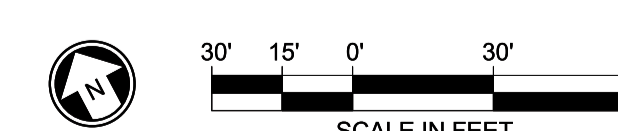


EAST ENTRY AT 80TH AVE SE



Ancillary Rooms	Platform	Station Entry
Bicycle Storage	Patron Circulation	Ticketing

LEGEND



SITE PLAN

August 2014

# TRANSIT PLANNING FOR THE FUTURE



## SOUTH BELLEVUE STATION 60% FINAL DESIGN



LOOKING SOUTHWEST



LOOKING EAST



SITE PLAN

# TRANSIT PLANNING FOR THE FUTURE



## THERE'S A LOT TO DO BEFORE 2023

### STAY INVOLVED



- East Link is approaching 90% final design for all stations
- Attend upcoming 90% design milestone open houses in late 2014
- Learn about traffic impacts and mitigation plans during East Link construction for the 14-mile alignment

- Learn about traffic impacts and detours during construction on I-90, Bellevue and Redmond, including impacts to park-and-rides, and changes to transit service to accommodate construction

- The process for determining bus route changes will occur approximately 2–3 years prior to East Link opening for service
- Before any route changes occur, Metro and Sound Transit will develop recommendations and invite the public to weigh in

### WANT THE LATEST UPDATES?

To sign up for our mailing lists, visit:

Sound Transit: [soundtransit.org/subscribe-to-alerts](http://soundtransit.org/subscribe-to-alerts)

Metro:

[metro.kingcounty.gov/signup/](http://metro.kingcounty.gov/signup/)

