



East Link Extension Mercer Island Final Design Open House

June 6, 2013

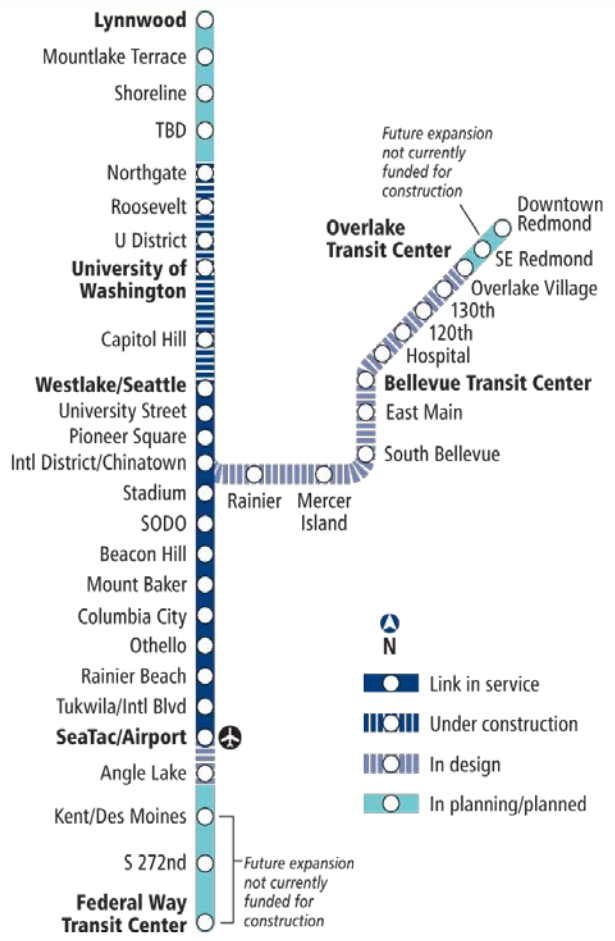
Tonight's agenda

- 5-7 p.m. – Open house
 - Meet the team
 - View design plans
 - Tell us what you think!
- 5:30 – Presentation
 - Welcome and introductions (Luke Lamon)
 - East Link overview (Paul Cornish)
 - Station design update (David Hewitt)
 - STart (Barbara Luecke)
 - Questions and answers
- 6:00 – Return to open house
- 7:00 - Close



Link light rail system

- 16 miles of light rail with 13 stations currently in service
- University Link under construction; opens 2016
- ST2 Plan funded extensions to Overlake, South King County, and Lynnwood
- 50+ mile system



East Link overview

Length: 14 miles

Ride times:

- Mercer Island to UW: 20 min.
- S. Bellevue to Airport: 50 min.
- Overlake Transit Center to Bellevue Transit Center: 10 min.

Rider projection: 50,000 daily by 2030

Budget: \$2.8 billion (2010 \$)

Start of Service: Targeted 2023



East Link timeline



I-90 Segment overview: Mercer Island

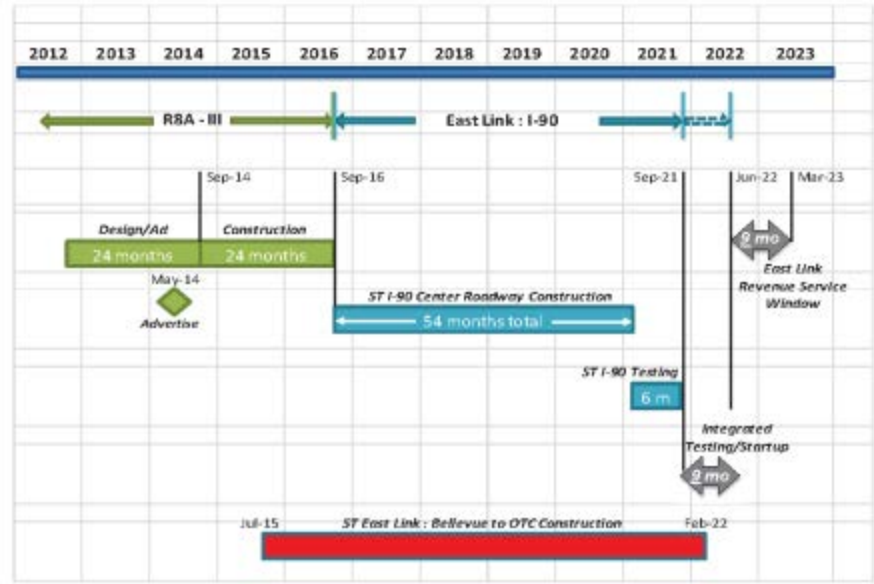
- Travels east from Seattle across Lake Washington on the I-90 floating bridge. Light rail serves Mercer Island with a station in the center roadway of I-90
- Approximately 2,000 daily station boardings at Mercer Island (2030)
- Riders will enter the station at 77th Ave SE and 80th Ave SE, in close proximity to the Mercer Island Park-and-Ride



I-90: HOV lanes & light rail transit schedule

- Sound Transit is working with WSDOT to provide full-time HOV lanes in the outer roadways, in preparation for light rail in the center roadway

East Link and R-8A Schedules



I-90: Floating bridge & light rail

Original bridge design anticipated use of center roadway for rail transit

OVERSIGHT

Independent Review Team (IRT):

State Legislature in 2008 called for an independent technical review, overseen by the Joint Transportation Committee (JTC), of light rail feasibility across the Interstate 90 - Homer Hadley Floating Bridge

2008 IRT report concluded that:

- All issues identified as potentially affecting feasibility can be addressed
- Made recommendations for issues to address during design
- ST and WSDOT are implementing the IRT recommendations

I-90: Floating bridge & light rail

TESTING

- Track Bridge prototype fabrication & testing: 2013-2014



- WSDOT Load Test: 2005



- University of Washington track bridge component testing: 2012-2013



What you can expect during final design

Design milestones

100 percent design

Final design kick-off
(Spring 2013)

60 percent design
(Second half of 2013)

90 percent design
(2014)

Start
construction
(targeted
2015)

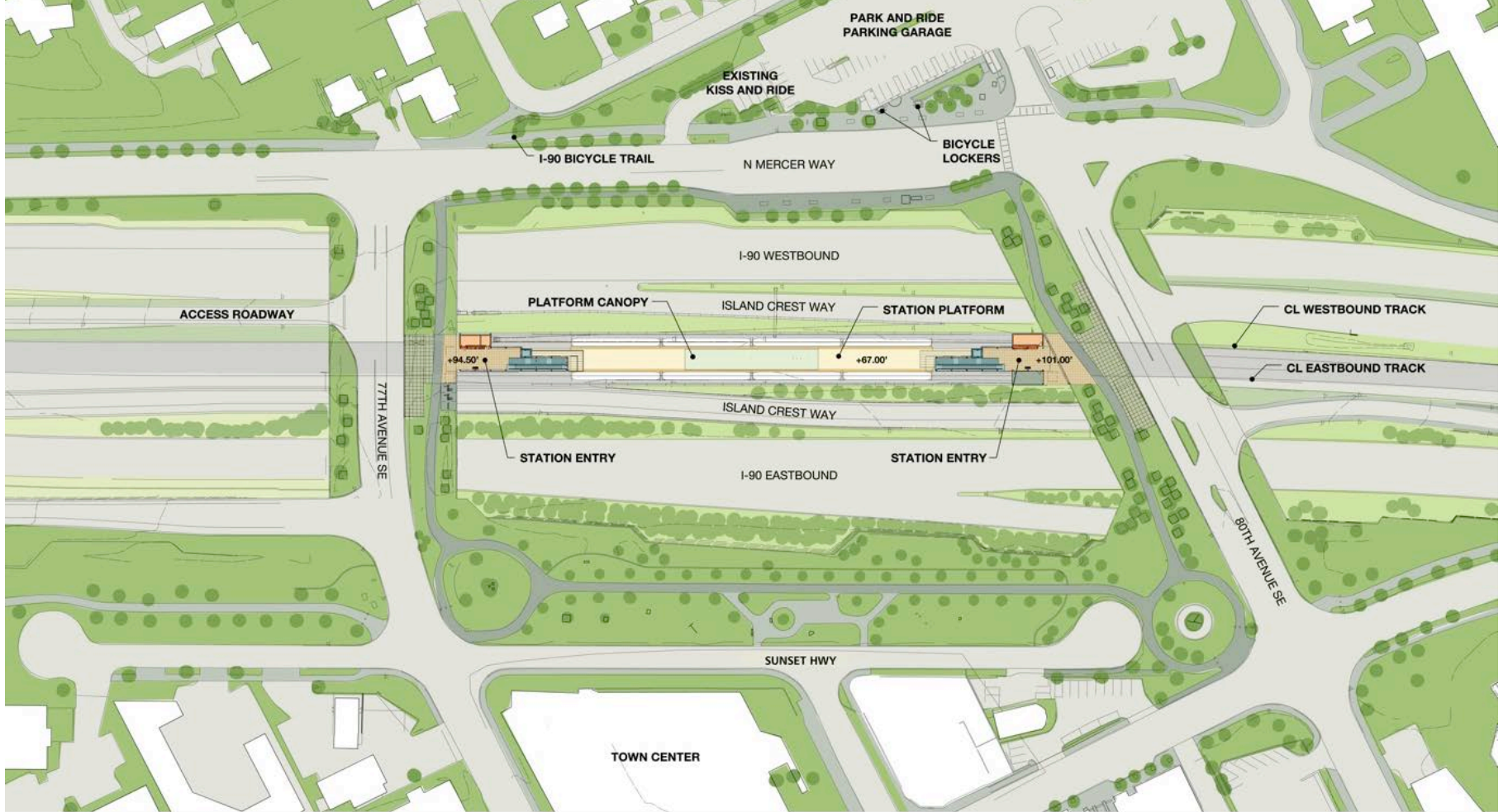
- Station design and naming outreach begins
- Lead Artist joins design team from *STart*
- Ancillary structures located

- Updated I-90 center roadway construction schedule
- Sound Transit & City of Mercer Island parking partnership
- Sound Transit Board identifies permanent station name

A blue-tinted photograph of a Sound Transit train. The train is viewed from a low angle, showing the front and side. The destination sign above the windshield reads "SOUND TRANSIT". The train has a modern, aerodynamic design with large windows. The background is a clear sky.

Station Design Overview

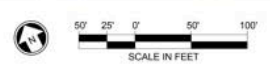
Mercer Island Station

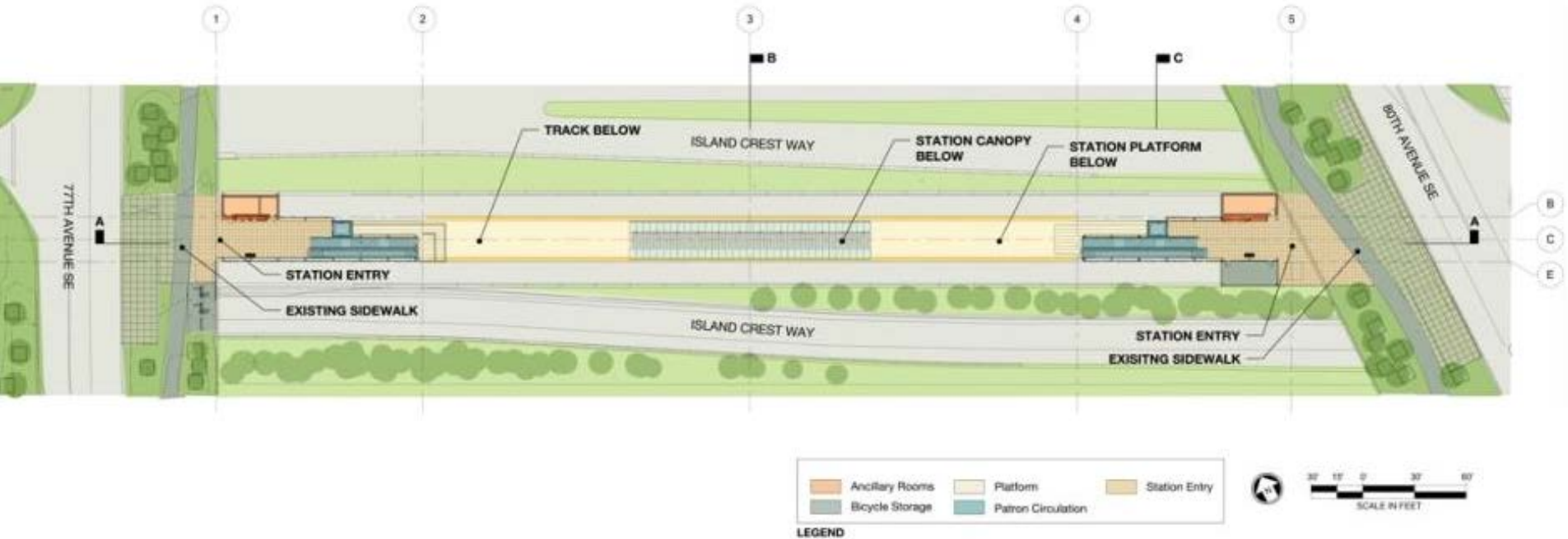


Mercer Island Station site plan

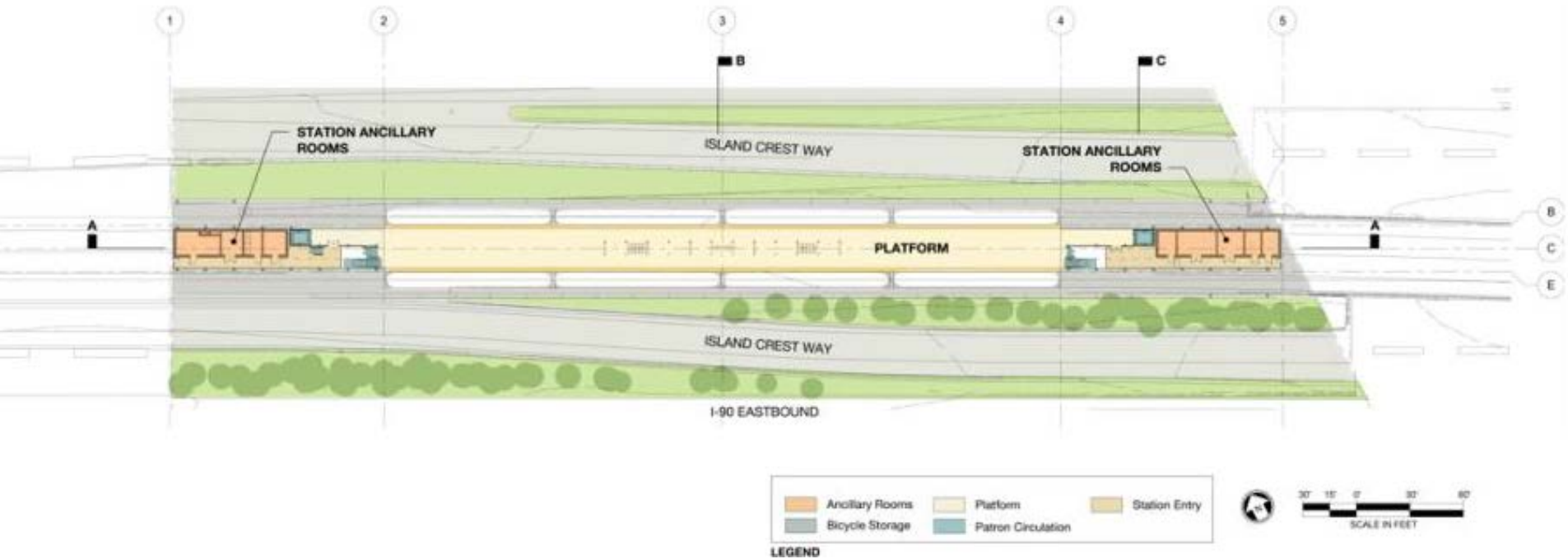
LEGEND

	Ancillary Rooms		Platform		Station Entry
	Bicycle Storage		Patron Circulation		





Mercer Island Station – Street level plan



Mercer Island Station – Platform level plan

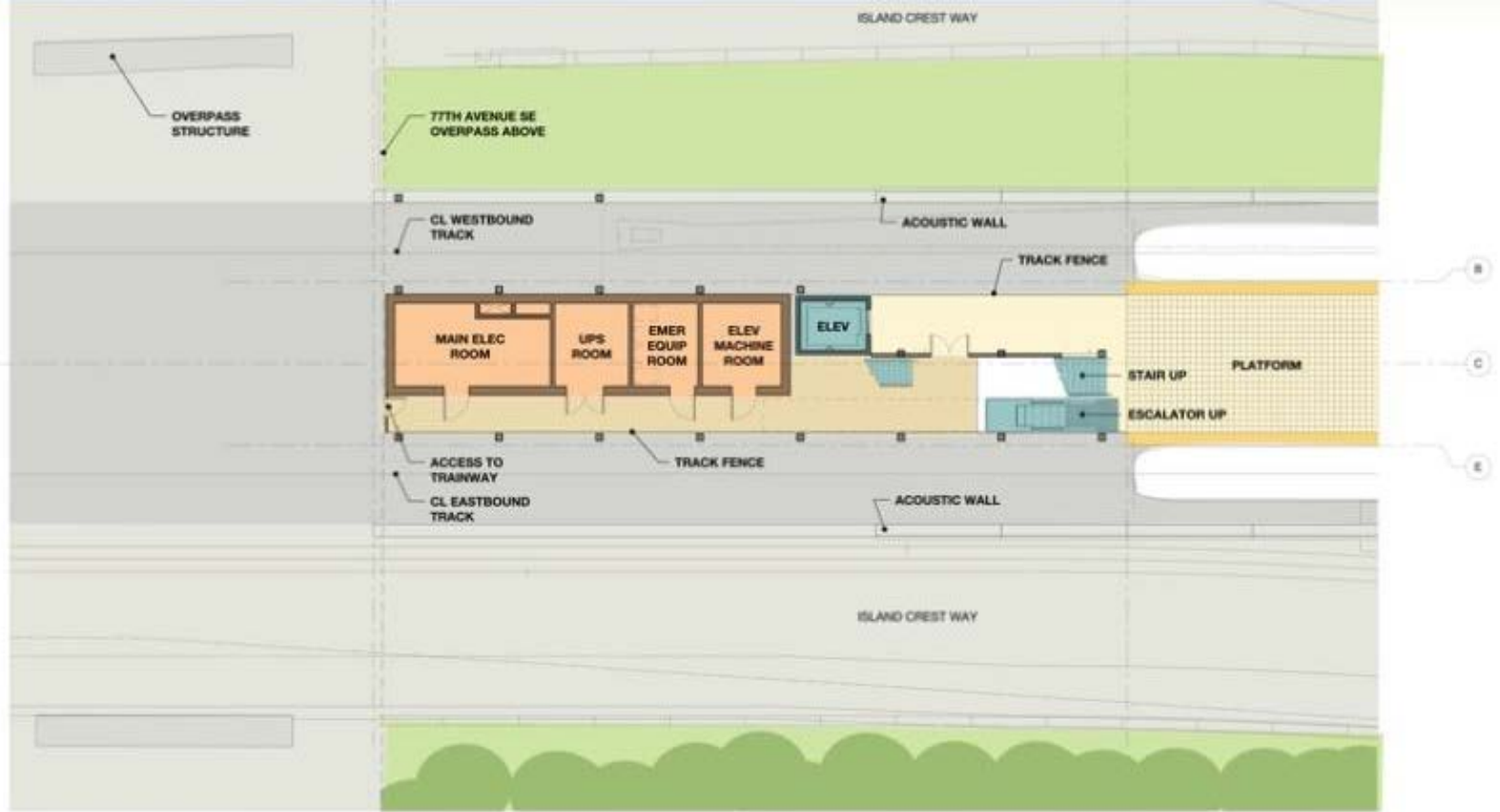


LEGEND

 Ancillary Rooms	 Platform	 Station Entry
 Bicycle Storage	 Patron Circulation	



Mercer Island Station – West street level plan



Mercer Island Station – West platform level plan

Mercer Island Station – East street level plan



LEGEND

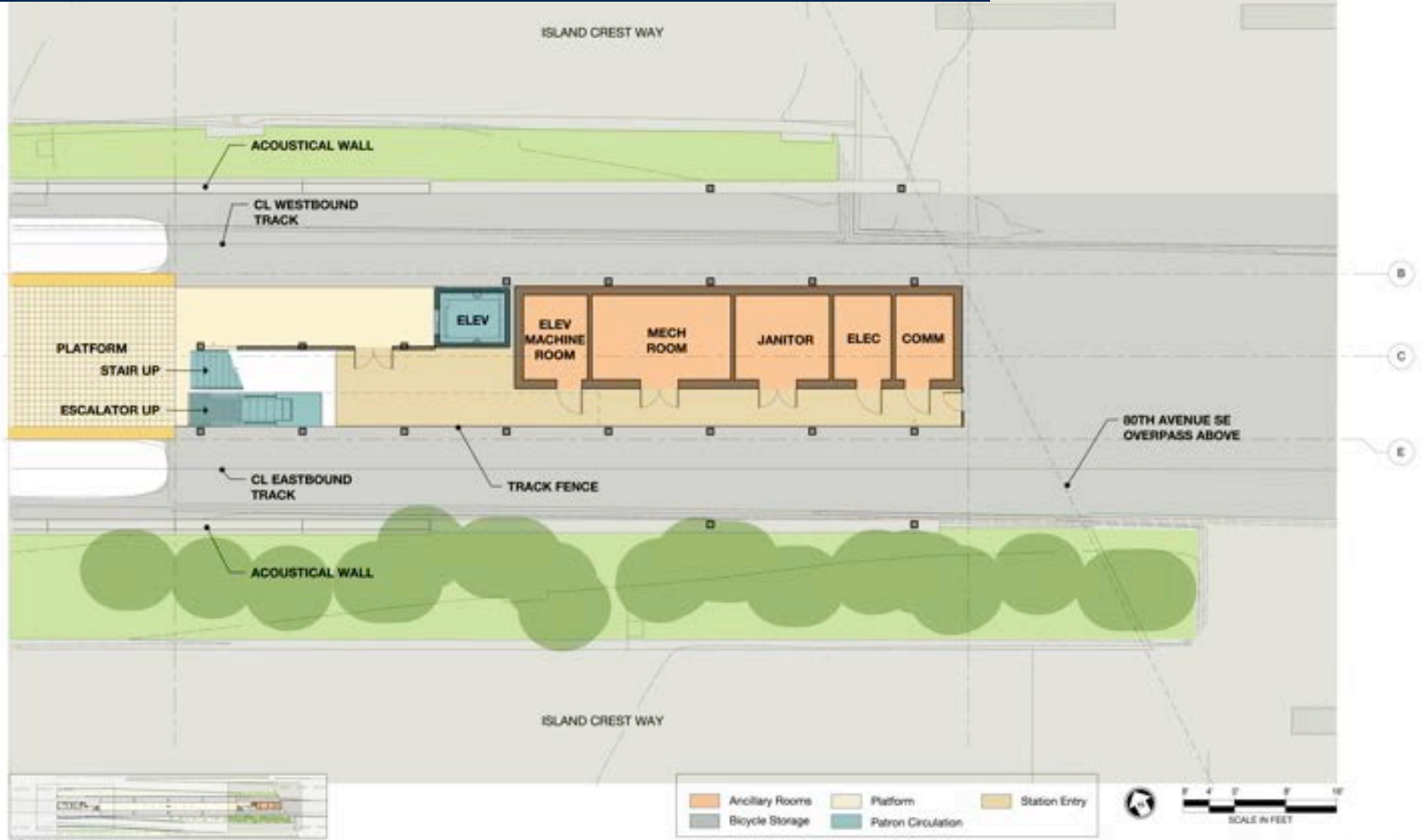
 Ancillary Rooms	 Platform	 Station Entry
 Bicycle Storage	 Patron Circulation	

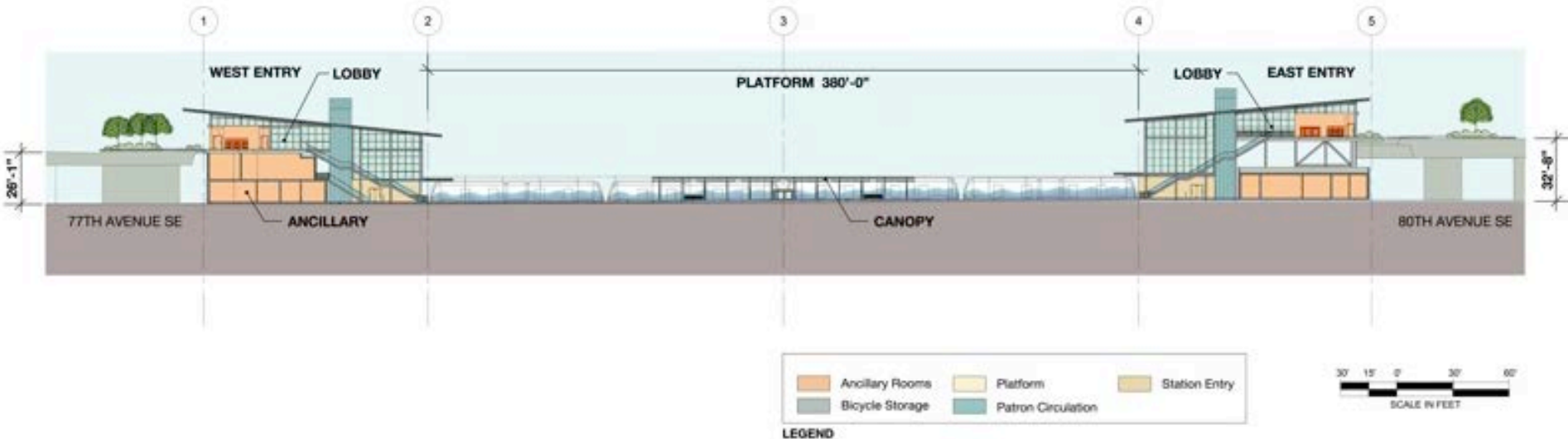


KEY MAP

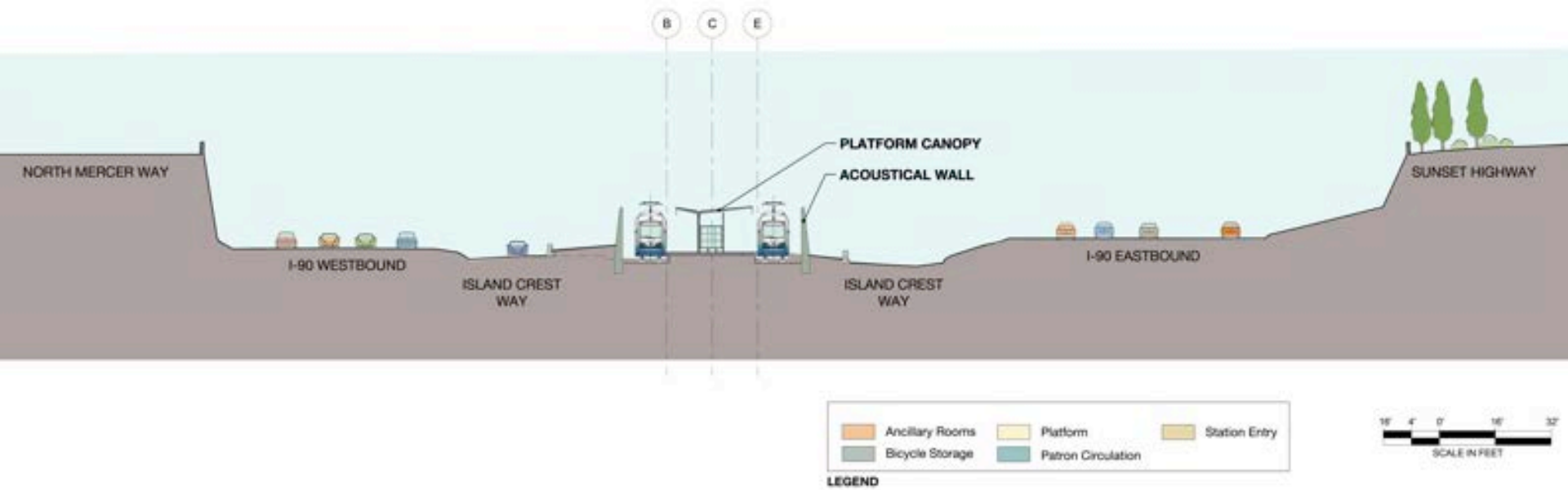
LEGEND

Mercer Island Station – East platform level plan

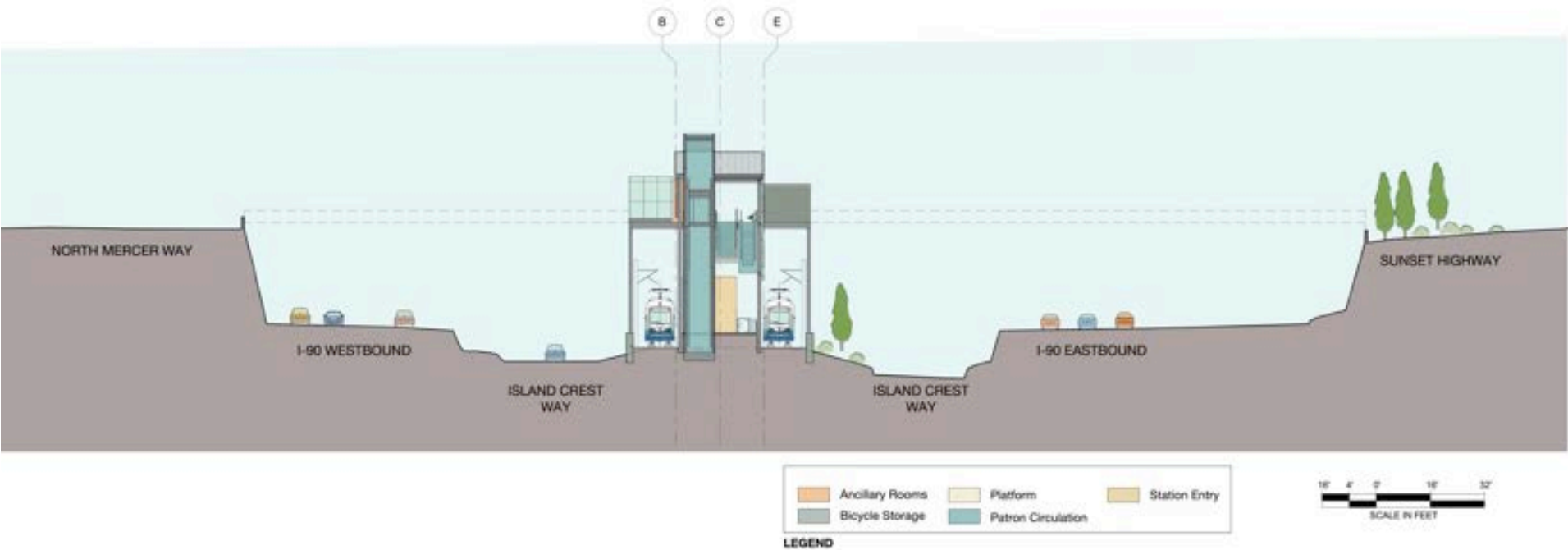




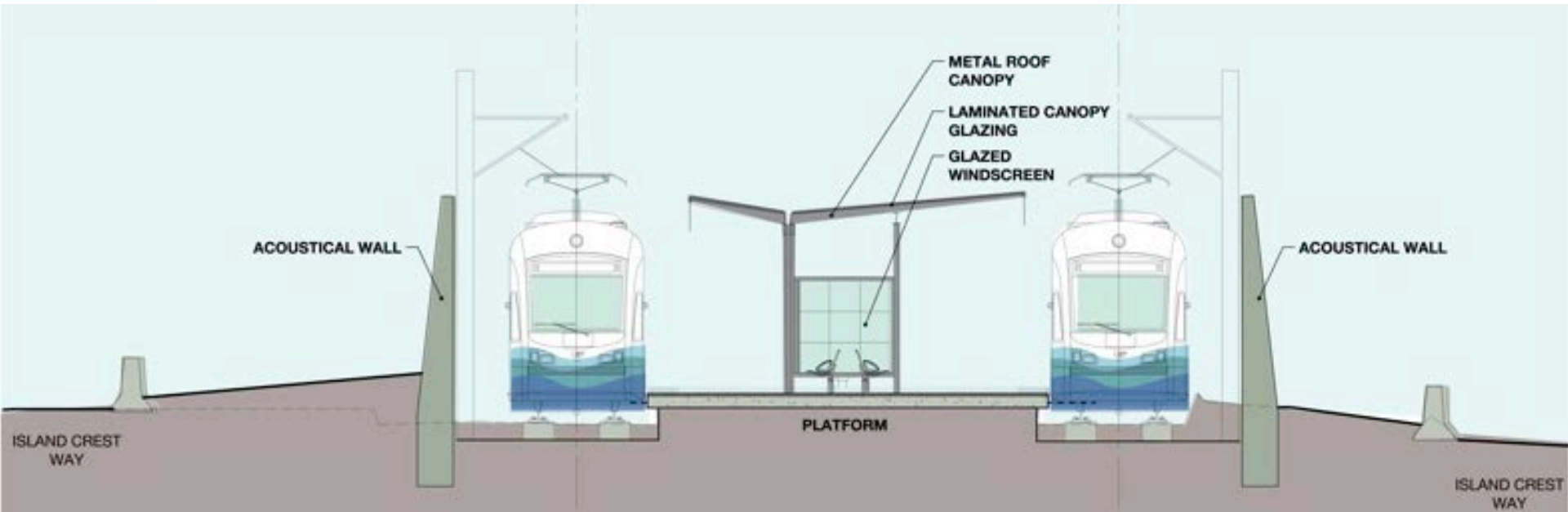
Mercer Island Station – Longitudinal section



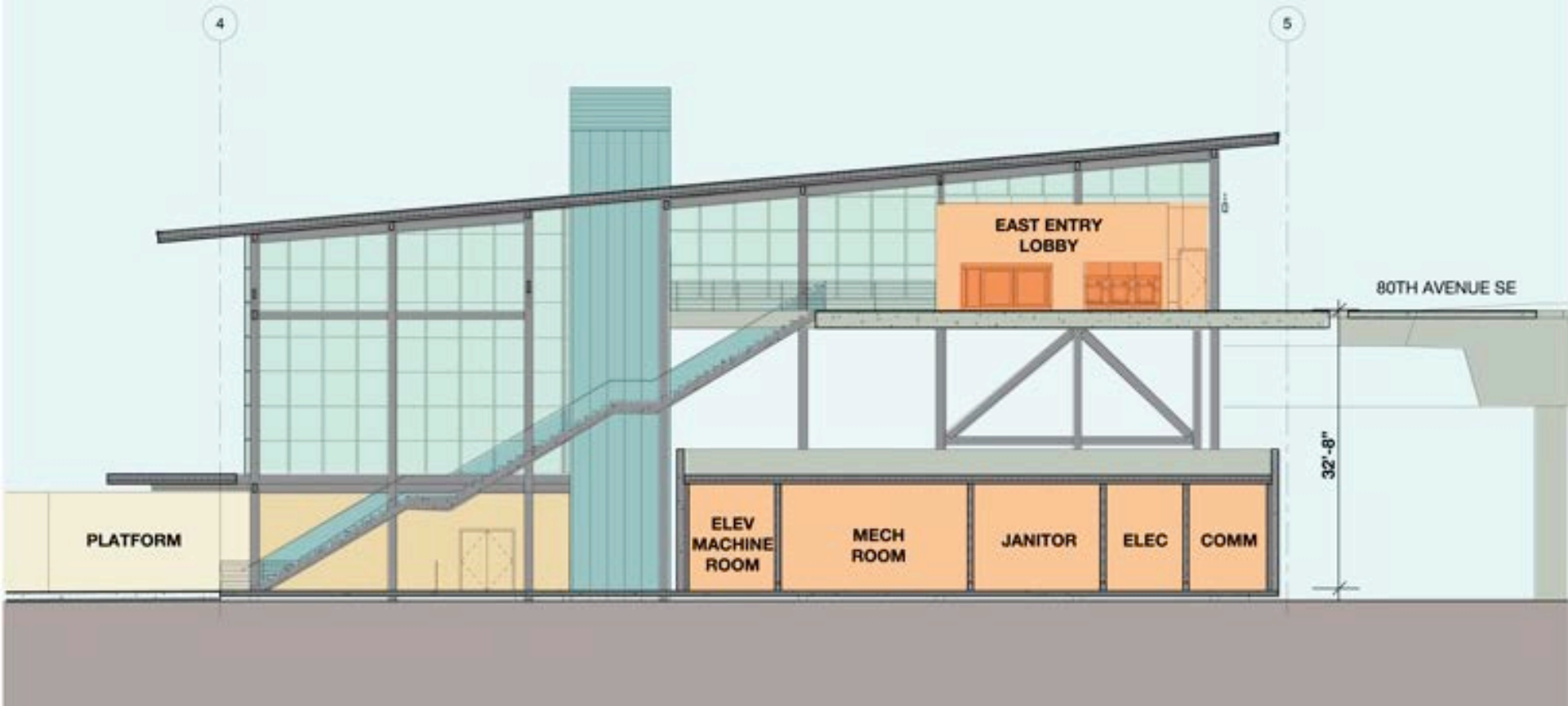
Mercer Island Station – Platform cross section



Mercer Island Station – East entry cross section



Mercer Island Station – Platform cross section



 Ancillary Rooms	 Platform	 Station Entry
 Bicycle Storage	 Patron Circulation	

LEGEND



Mercer Island Station – East entry cross section



Mercer Island Station – East entry looking northwest



STATION NAME

Mercer Island Station – West entry plaza

Mercer Island Station – Platform view to west entry





Mercer Island Station – Station view looking south to town center

Station Naming Process



Permanent station names

- Reflect the nature of the community and environment
- Succinct and easy to read
- Comply with federal Americans with Disabilities Act guidelines and limited to 30 characters
- Avoid commercial references
- Avoid similar names or words in existing facilities



Comment on station names tonight!

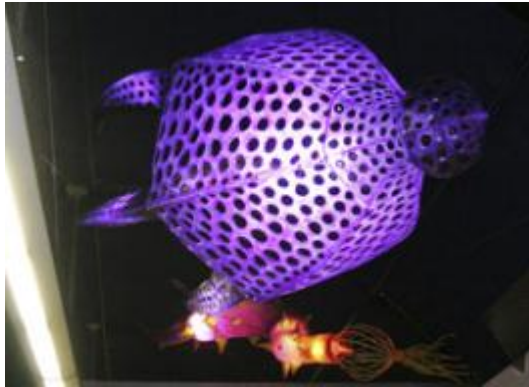
STart

Sound Transit's Integrated Art Program



Start on LINK

Sound Transit Art Program



Next steps

- Continue coordination with local jurisdictions and the public
- Station naming outreach
- Select station artists
- Advance design to 60% milestone

Next East Link meeting:

- Seattle, mid-summer

We want to hear from you!

- Sound Transit Community Outreach staff is accessible by phone, email, and is available to meet in person
- Contact Community Outreach staff: eastlink@soundtransit.org or 206-398-5470
- Attend final design community meetings
- Sign-up to receive email updates: www.soundtransit.org/subscribe
- Visit the project website: www.soundtransit.org/eastlink

Questions?

