



# East Link Extension East Main Station Segment 60% Design Open House

February 25, 2014

# Tonight's agenda

- **5-7 p.m. – Open house**
  - Meet the team
  - View design plans
  - Tell us what you think!
- **5:30 – Presentation**
  - Welcome and introductions (Luke Lamon)
  - City of Bellevue CAC introduction (Kate March)
  - East Link overview (Paul Cornish)
  - Station design update (John Walser)
  - *STart* (Barbara Luecke)
  - Questions and comments
- **6:00 – Return to open house**
- **7:00 - Close**





# City of Bellevue

## Light Rail Permitting Citizen's Advisory Committee

- Appointed by the Bellevue City Council
- 9 Bellevue Residents
- Represents a citywide perspective on the design and mitigation permit process for East Link



# City of Bellevue

## Reviews major project components:

- Station design
- Park & rides
- Landscaping
- Accessory structures
- Noise walls
- Tunnel portals
- Public art



# City of Bellevue

## Station Area Planning Program

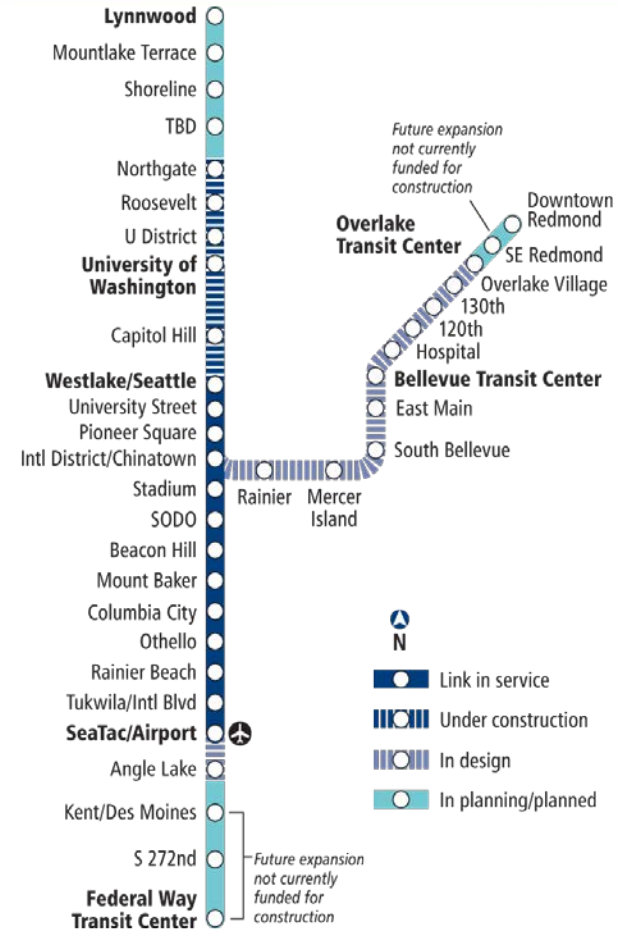
Examines:

- Pedestrian, bicyclist and bus connections to station
- Neighborhood traffic and parking impacts
- Promoting/maintaining neighborhood character
- Potential land use changes on the **EAST** side of 112th



# Link light rail system

- 16 miles of light rail with 13 stations currently in service
- University Link & South 200<sup>th</sup> Link under construction; open 2016
- ST2 Plan funded extensions to Overlake, South King County, and Lynnwood
- 50+ mile system



# East Link overview

Length: 14 miles

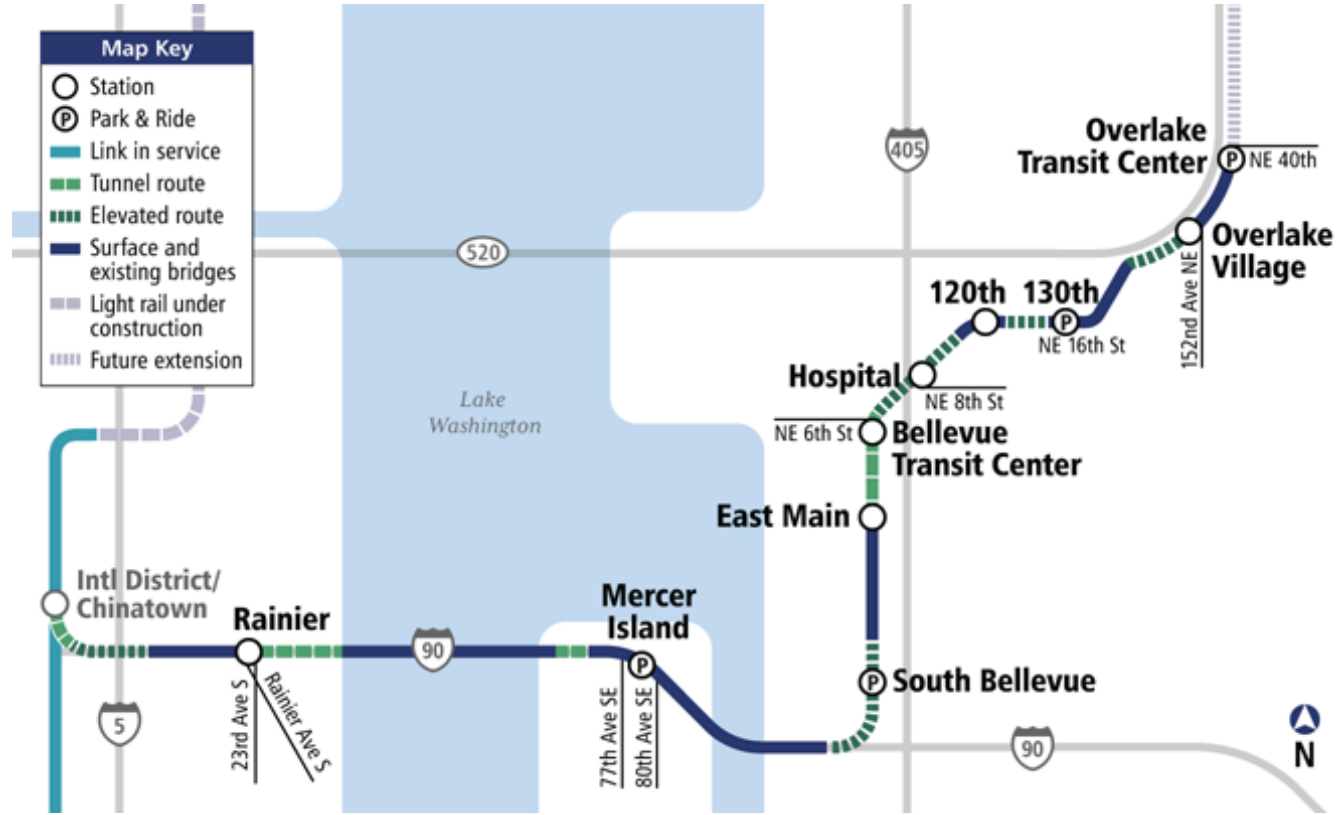
Ride times:

- Mercer Island to UW: 20 min.
- S. Bellevue to Intl. District: 14 min.
- Overlake Transit Center to Bellevue Transit Center: 10 min.

Rider projection: 50,000 daily by 2030

Budget: \$2.8 billion (2010 \$)

Start of Service: Targeted 2023



# East Link timeline & recent progress

2006-2011

Planning and  
environmental  
review

2011-2015

Final design  
*(we are here)*

- ✓ Completion of geotechnical explorations
- ✓ Property acquisition initiated
- ✓ Shoreline Permit submitted

2015-2022

Construction

Targeted 2022

Testing &  
pre-operations

Targeted 2023

East Link  
in service



# What we've heard

- Noise
  - Operations
  - Construction
- Station Design
  - Honoring the architectural history of the Surrey Downs neighborhood
  - Pedestrian access and wayfinding
- Construction
  - Sound Transit to confirm schedule/cost (late 2014)
  - Coordination: City of Bellevue



# Permanent station names

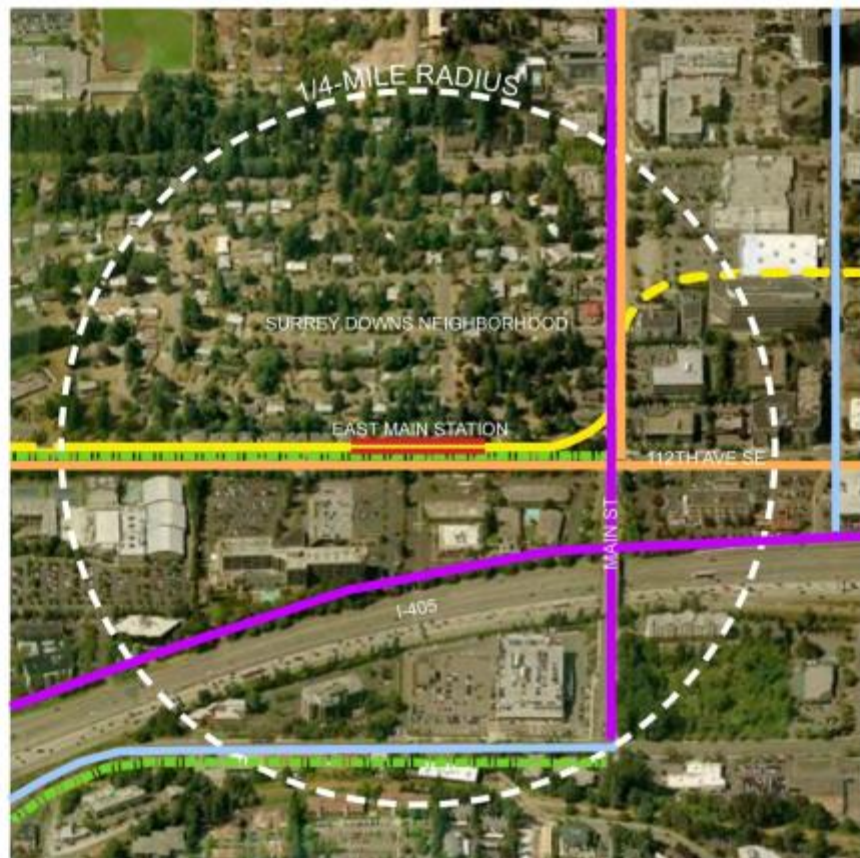
- Reflect the nature of the community and environment
- Succinct and easy to read
- Comply with federal Americans with Disabilities Act guidelines and limited to 30 characters
- Avoid commercial references
- Avoid similar names or words in existing facilities



# Station Design Overview

East Main Station





## LEGEND

BUS ROUTE

BICYCLE ROUTE

FUTURE BICYCLE LANE

FUTURE OFF-STREET PATH

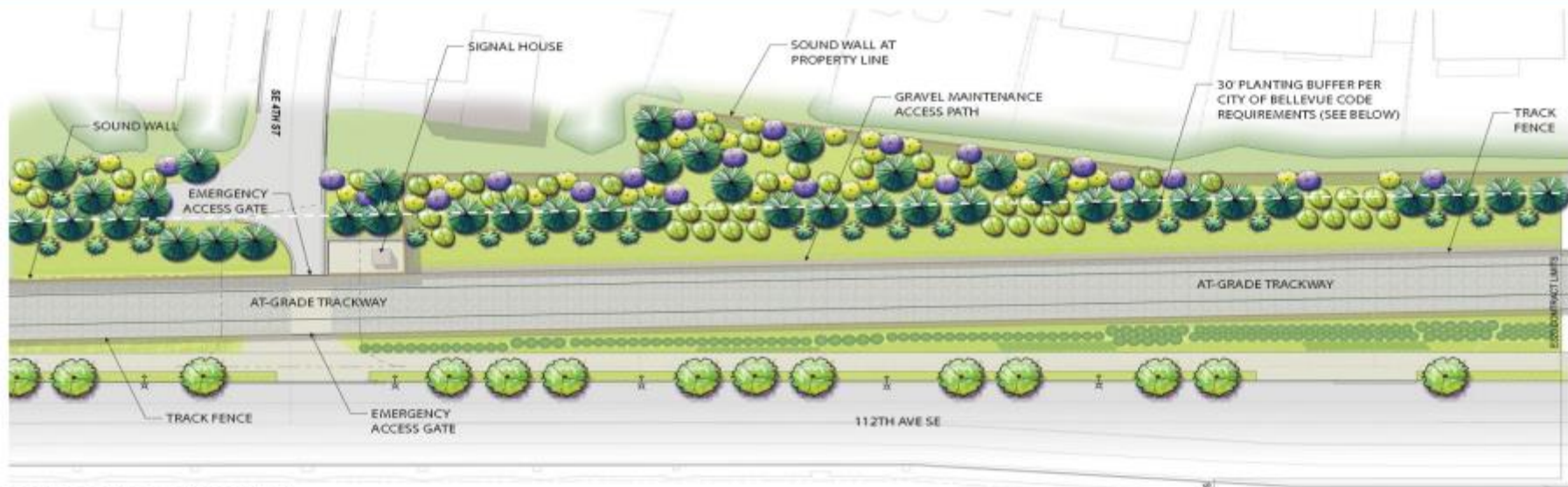
LIGHT RAIL TRACKS

STATION



# S. BELLEVUE CORRIDOR - 112TH AVE SE AT SE 4TH ST

## EAST LINK EXTENSION

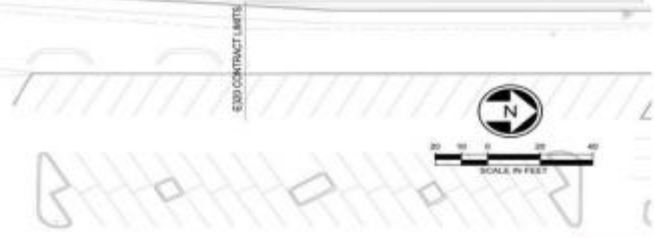


30' PLANTING BUFFER PER CITY OF BELLEVUE CODE REQUIREMENTS (LUC 20.25B.040C.2.c)



SCALE: 1" = 10'

- Min. of 5 trees per 1,000 sq. ft. of buffer area
- 10' min. height for trees at time of planting
- Max. 40% of trees can be deciduous.
- Trees must be set back from center of rail guideway by 34" minimum
- Evergreen shrubs must be min. 42" in height and spaced 3' on center at time of planting
- Mix of evergreens and deciduous shrubs











# East Main Station

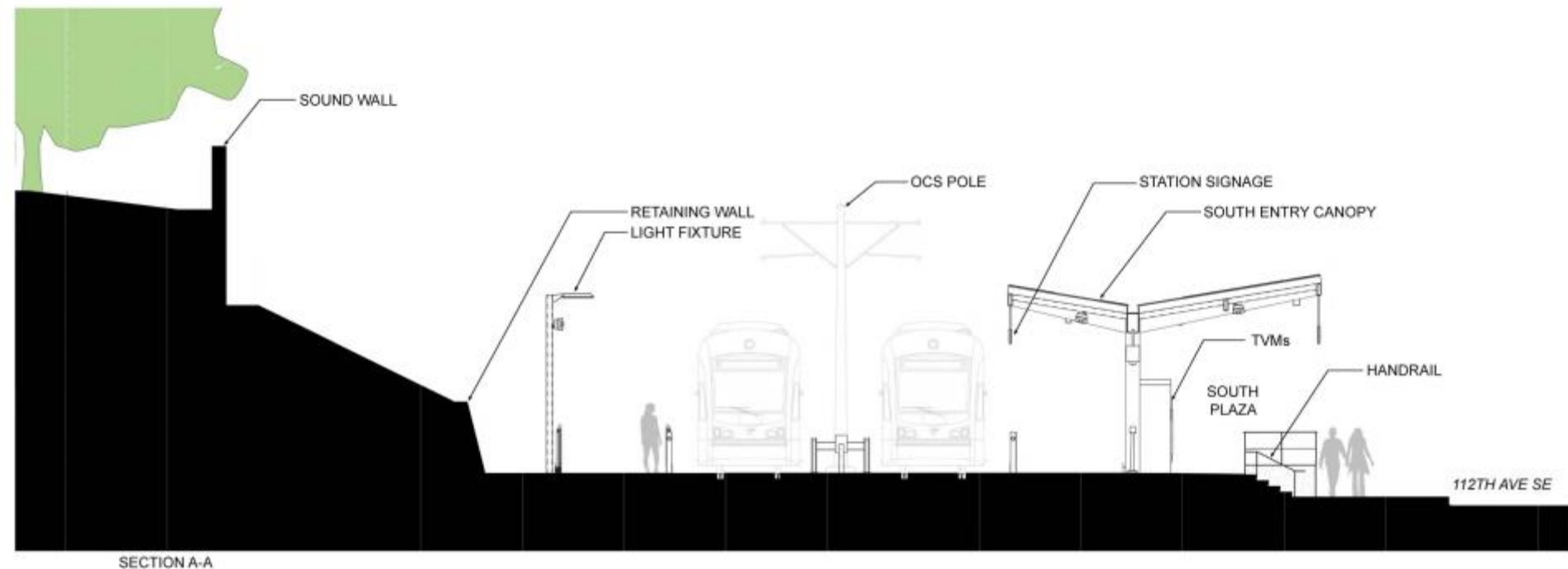


**North Plaza View**

# East Main Station



**Platform View**





# South Portal Electrical Building (SPEB)



**View From 112th Ave SE**

# South Portal Electrical Building (SPEB)



**View From 112th Ave SE**

# MAIN STREET PARK

## EAST LINK EXTENSION



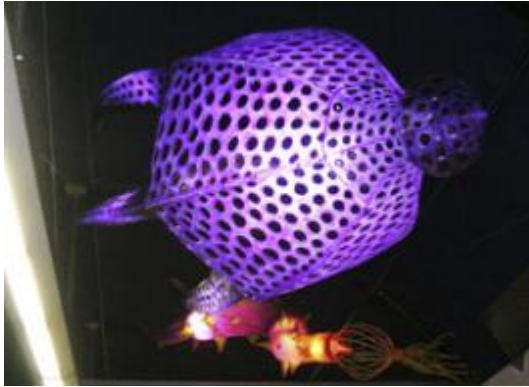
# *STart*

Sound Transit's Integrated Art Program





Sound Transit Art Program **STart on LINK**



# Questions?

