

East Link Extension Update Mercer Island

November 19, 2014

Tonight's agenda

- 5-7 p.m. – Open house
 - Meet the team
 - View design plans
 - Tell us what you think
- 6:00 – Presentation
 - Welcome and introductions (Mayor Bassett)
 - East Link overview (Don Billen)
 - Parking project (Tia Raamot)
 - Integrated transit service update
 - Question and answer
- 7:00 - Close

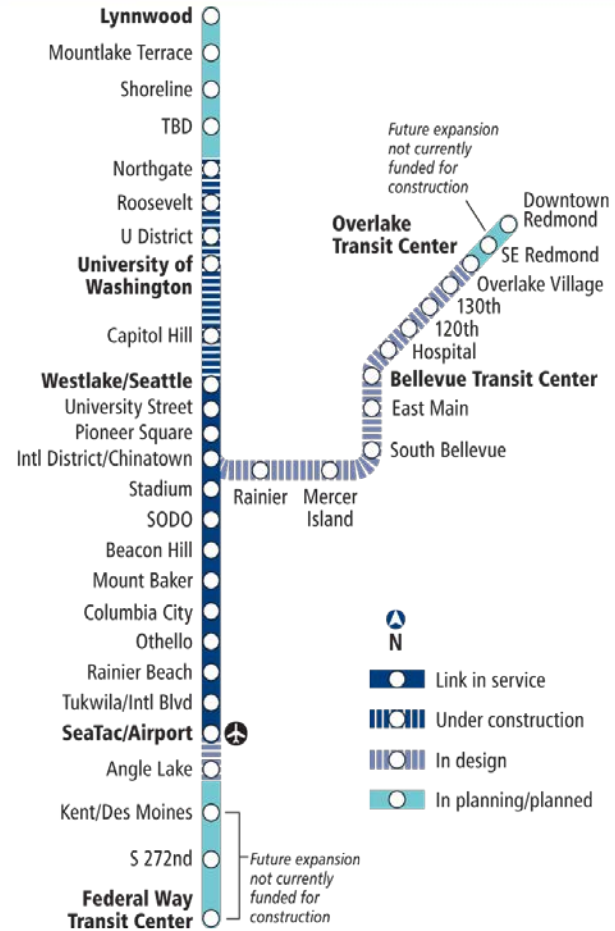


East Link Overview



Link light rail system

- 16 miles of light rail with 13 stations currently in service
- University Link under construction; opens 2016
- ST2 Plan funded extensions to Overlake, South King County, and Lynnwood
- 50+ mile system



East Link overview

Length: 14 miles

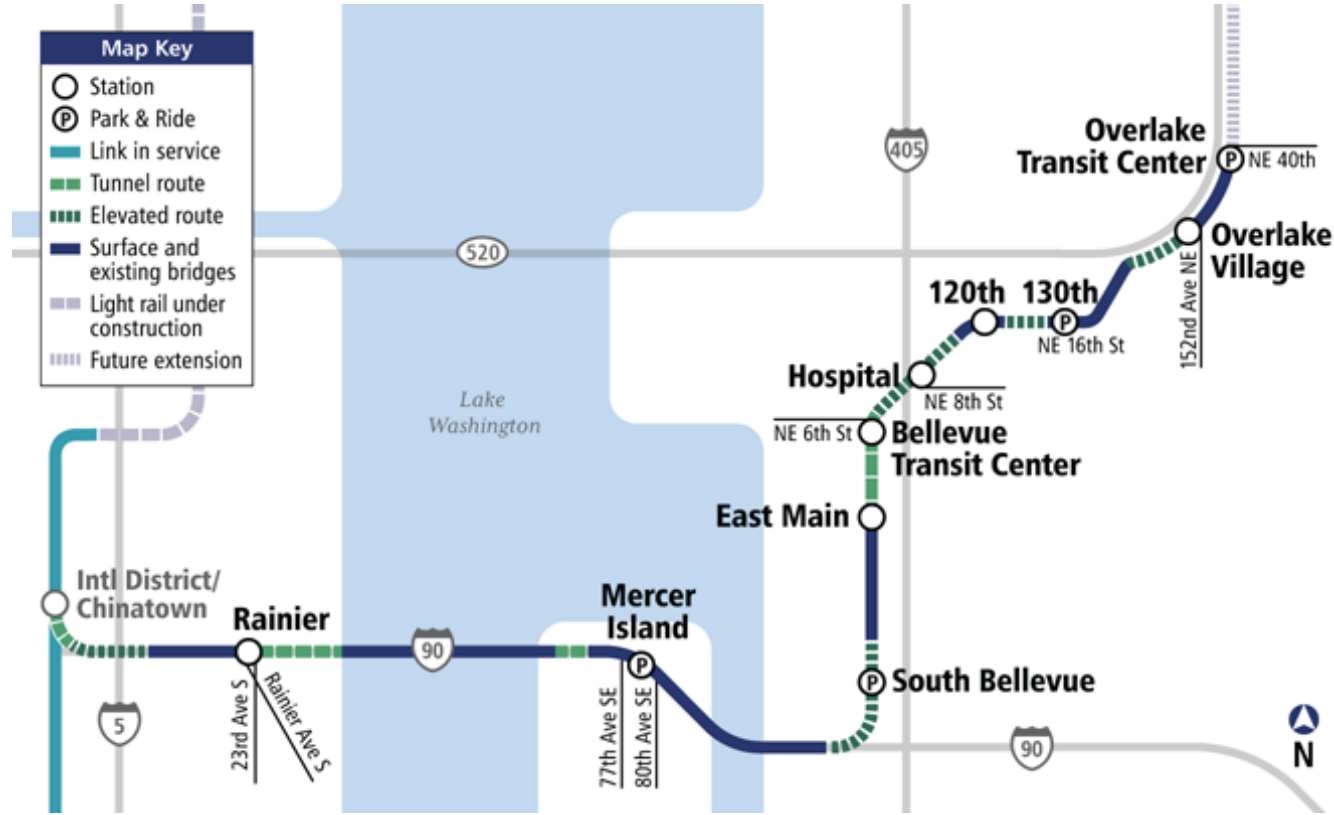
Ride times:

- Mercer Island to UW: 20 min.
- S. Bellevue to Airport: 50 min.
- Overlake Transit Center to Bellevue Transit Center: 10 min.

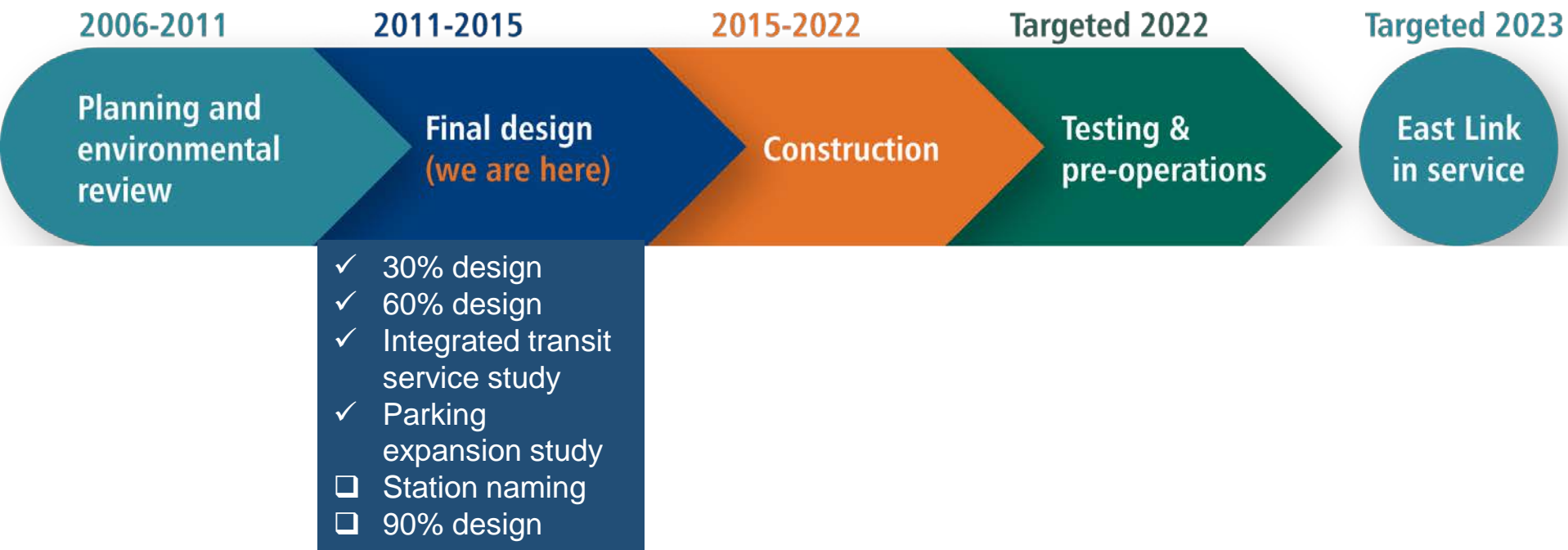
Rider projection: 50,000 daily by 2030

Budget: \$2.8 billion (2010 \$)

Start of Service: Targeted 2023



East Link timeline & recent progress



East entry at 80th Ave SE



West entry at 77th Ave SE



View from Mercer Island Park-and-Ride



Mercer Island outreach

What we heard at the 60 percent design milestone:

- More Mercer Island resident commuter parking
- Integrated transit service
- Interest in the ventilators and color
- Desire to reflect community character



A blue-tinted photograph of a Sound Transit bus. The bus is viewed from a front-quarter perspective, showing the windshield with the destination sign that reads "SOUND TRANSIT". The bus is on a road, and the background is a clear sky. The overall image has a monochromatic blue color scheme.

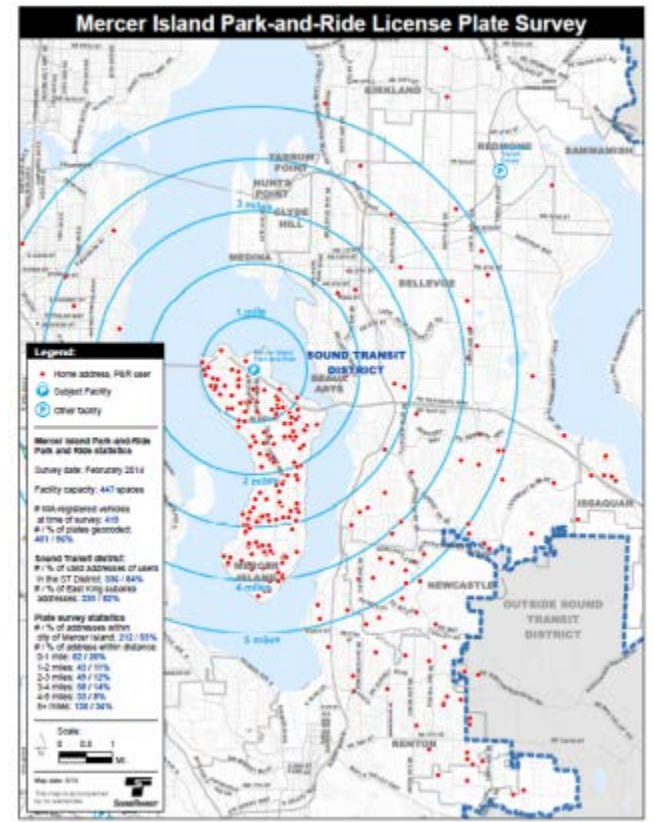
Commuter Parking Expansion

Mercer Island Community & Event Center

Partnership with the City of Mercer Island

Parking Expansion Study

- 53% of Park & Ride users live on Mercer Island
- Existing Park-and-Ride is full by 7:30 am
- Sound Transit and Mercer Island are partnering to find a solution



Mercer Island Community & Event Center parking study

Sound Transit is evaluating two proposed parking expansion alternatives at the Mercer Island Community & Event Center (MICEC) with the following design considerations:

- Minimize disruption to the MICEC and surrounding neighbors during construction and operation of the parking facility
- Provide separate and distinct entrances for transit and MICEC customers
- Provide uninterrupted vehicle drop off in front of the MICEC



Context Map

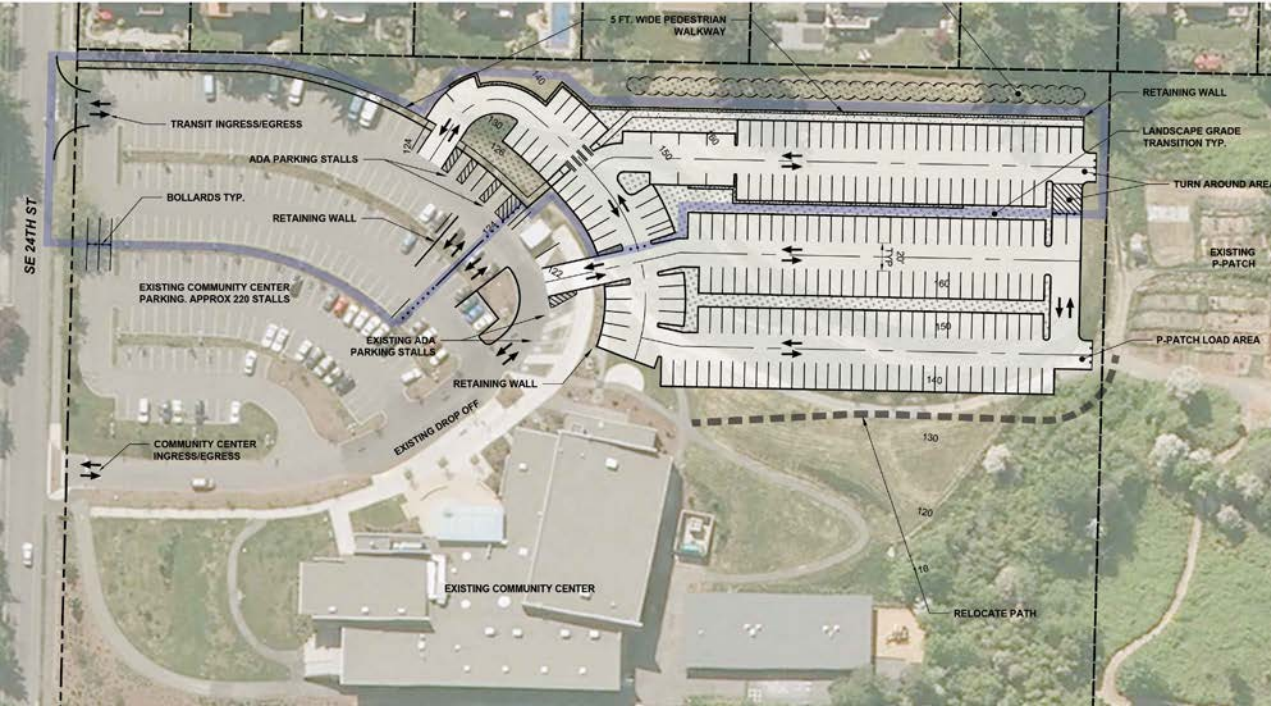


Concept 1: Parking garage



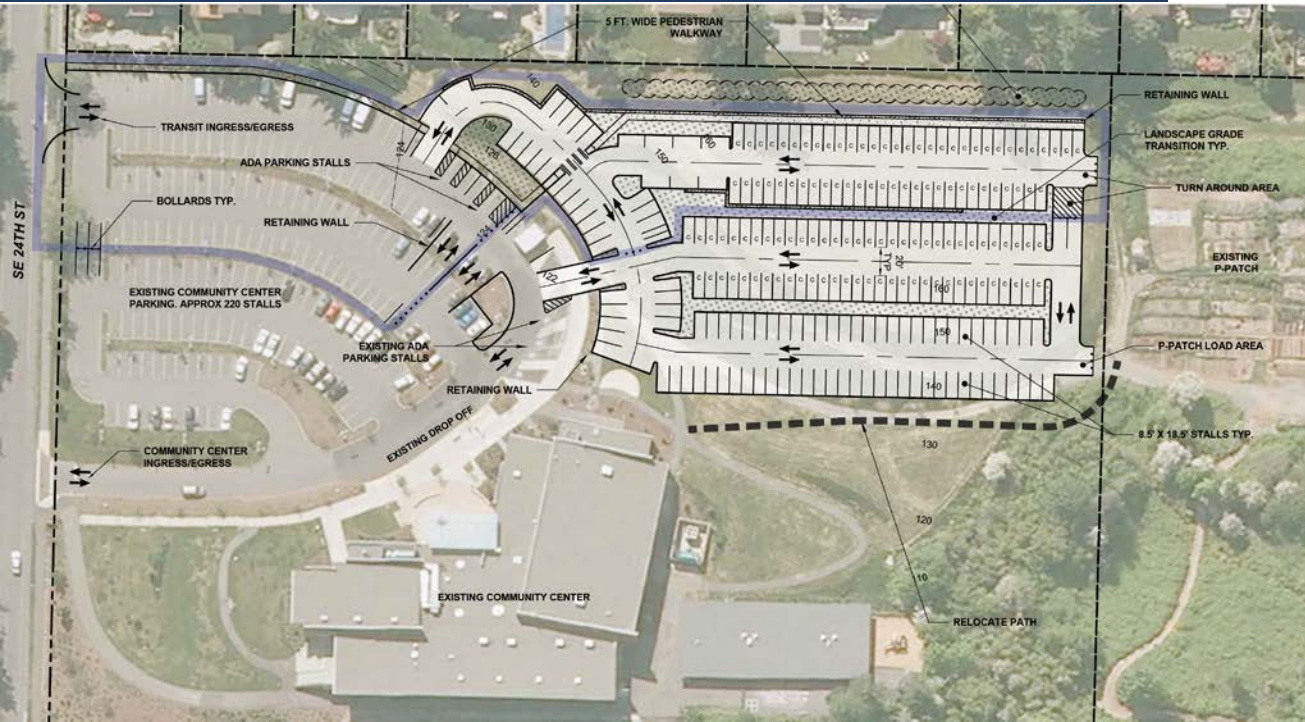
- A three level parking garage located west of the MICEC.
- Drivers enter from a new driveway connected to the existing lower parking lot.
- Parking garage top-floor height:
 - 156 ft.
 - approximately 4 ft. below the top of the existing hill.

Concept 2a: Surface parking



- A surface parking design uses the existing hill near the MICEC.
- Two way traffic lanes and 90 degree parking on each side.
- Drivers and pedestrians enter from SE 24th St. or a pedestrian walkway.
- Landscaping screens the parking lot from the nearby residences.

Concept 2b: Surface parking (includes compact stalls)



- A surface parking design uses the existing hill near the MICEC.
- Two way traffic lanes and 90 degree parking on each side.
- Drivers and pedestrians enter from SE 24th St. or a pedestrian walkway.
- Landscaping screens the parking lot from the nearby residences.



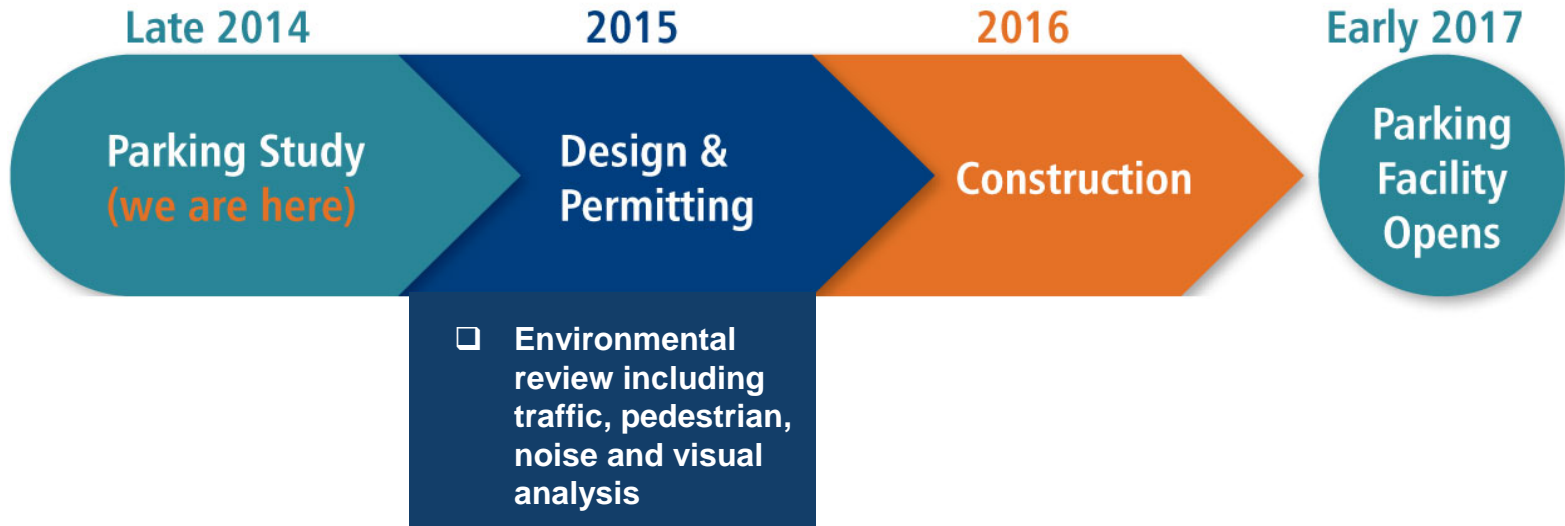
By the numbers

Parking Type	New MI Commuter Stalls	Community & Event Center Stalls	Total Stalls
Concept 1: Structured parking	229	213	442
Concept 2a: Surface parking	203	224	427
Concept 2b: Surface parking (compact stalls)	207	228	435

Current Community & Event Center Stalls: ~215

Project timeline

Project timeline (if the Community & Event Center project is advanced)



A blue-tinted photograph of a Sound Transit bus. The bus is viewed from a front-quarter perspective, showing the destination sign at the top of the windshield which reads "SOUND TRANSIT". The bus is on a road, and the background is a clear sky. The overall image has a monochromatic blue color scheme.

Integrated Transit Service

Mercer Island

Partnership with the City of Mercer Island

Integrated Transit Study

Sound Transit and King County Metro are designing changes to the way transit crosses I-90. Bus and light rail service will connect at regional transit hubs, including the Mercer Island and South Bellevue stations, where transit riders will transfer between bus and light rail.



Continued partnership with King County Metro



Building from experience with Central Link

Why integrate transit service?

Improved operational efficiencies

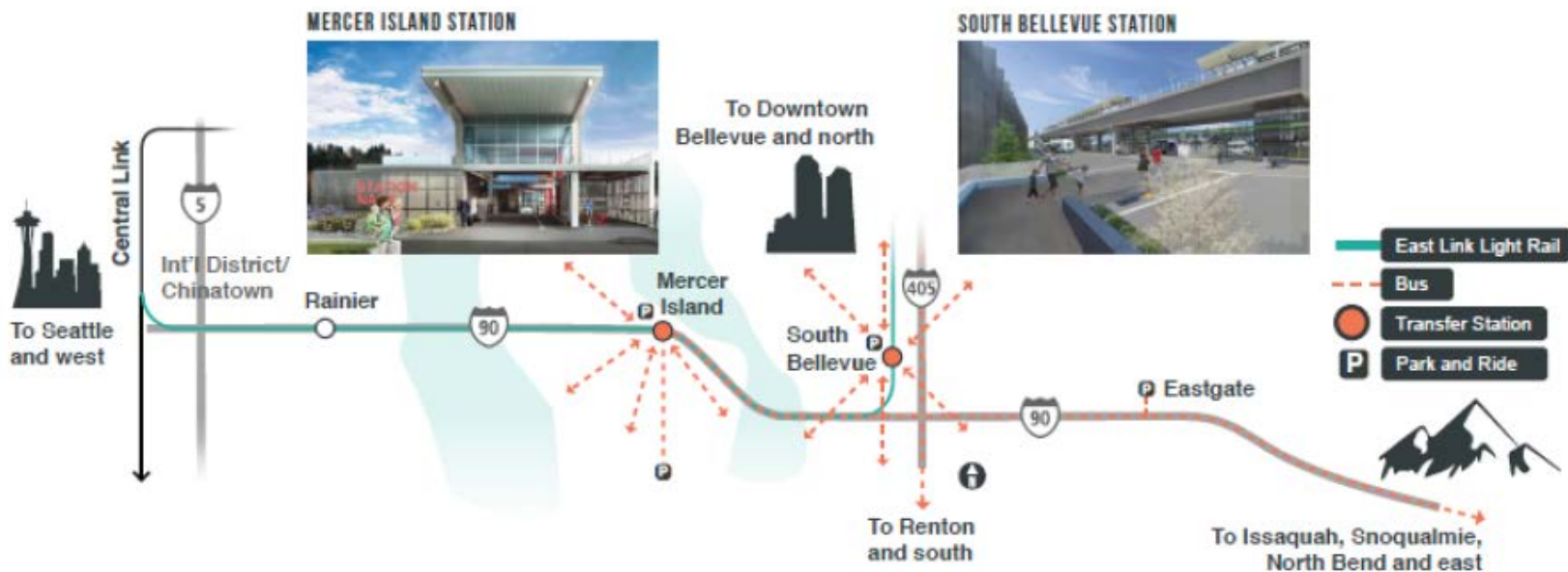
Potential efficiencies with integration include:

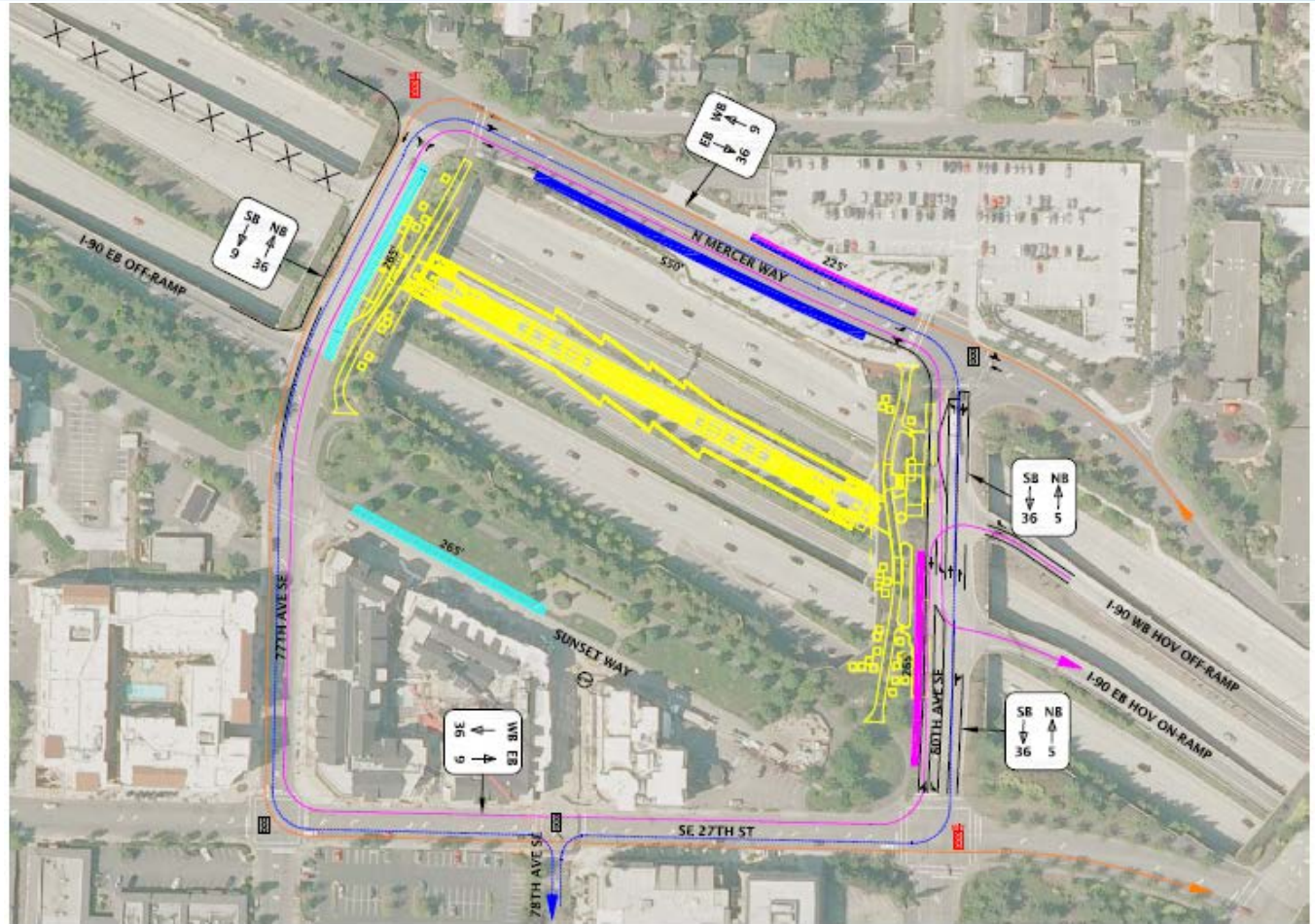
- Keeping buses out of rising congestion
- Operating efficiencies from avoiding duplicative service across Lake Washington
- Opportunity to save bus hours for reinvestment, which may increase frequency from I-90 park-and-rides
- More reliable travel time between Seattle and Mercer Island



Integrated transit service on the I-90 corridor

Sound Transit and King County Metro are designing facilities at South Bellevue and Mercer Island to maximize access to congestion-free rail service.

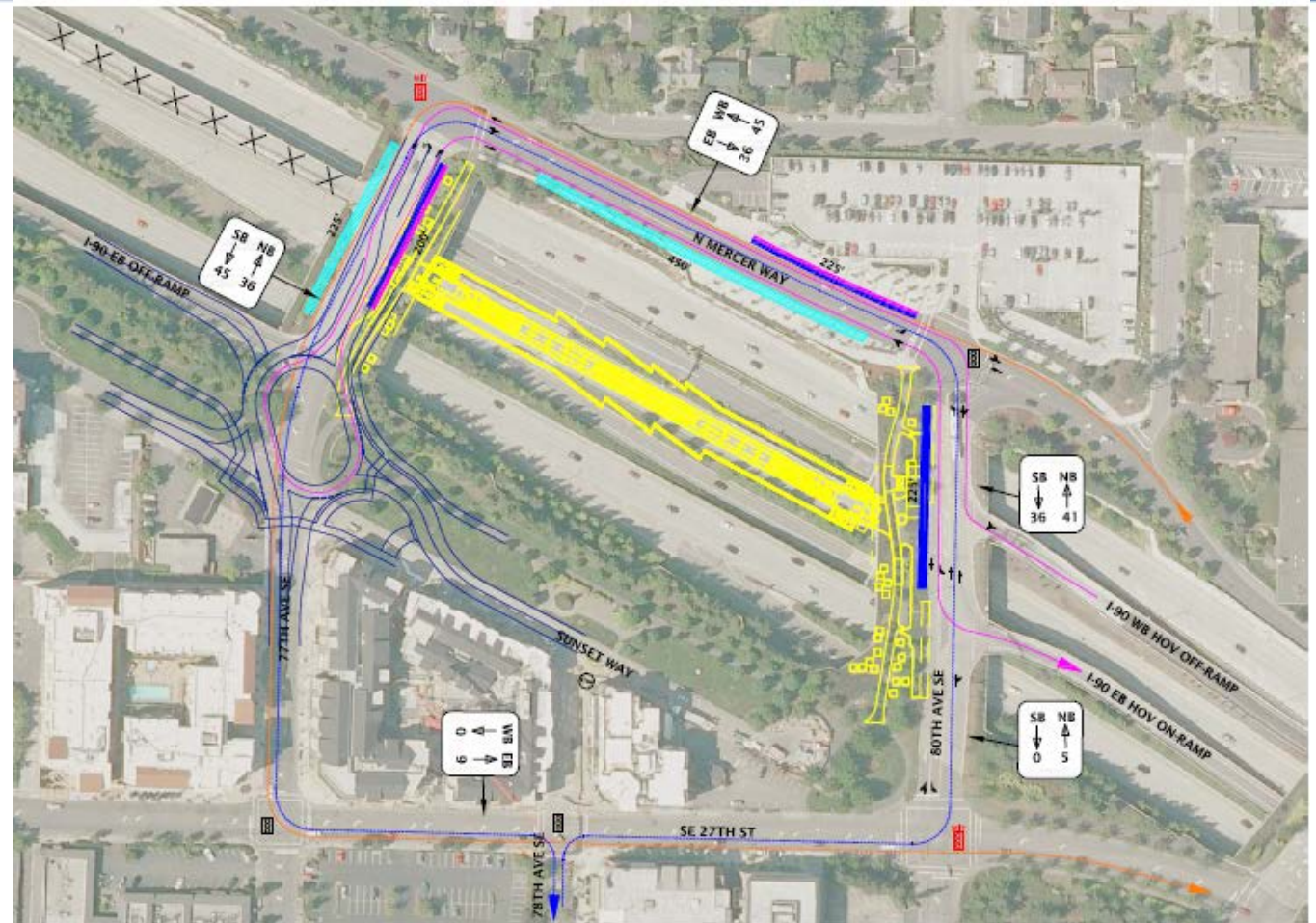




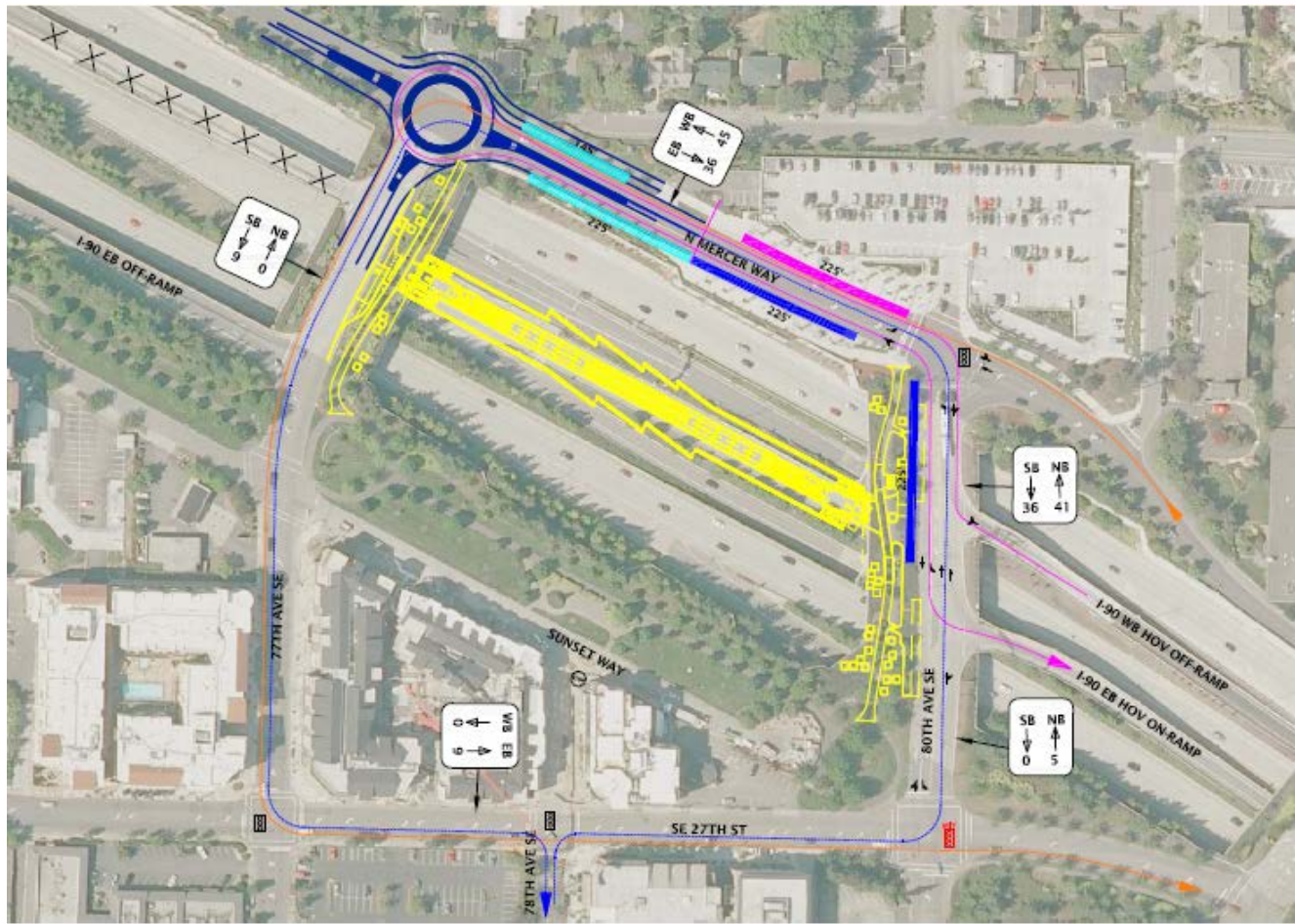
Scenario 2
-no roundabout

Scenario 3

-roundabout at
Sunset Hwy &
77th Ave.



Scenario 4
-roundabout at N.
Mercer Way &
77th Ave.



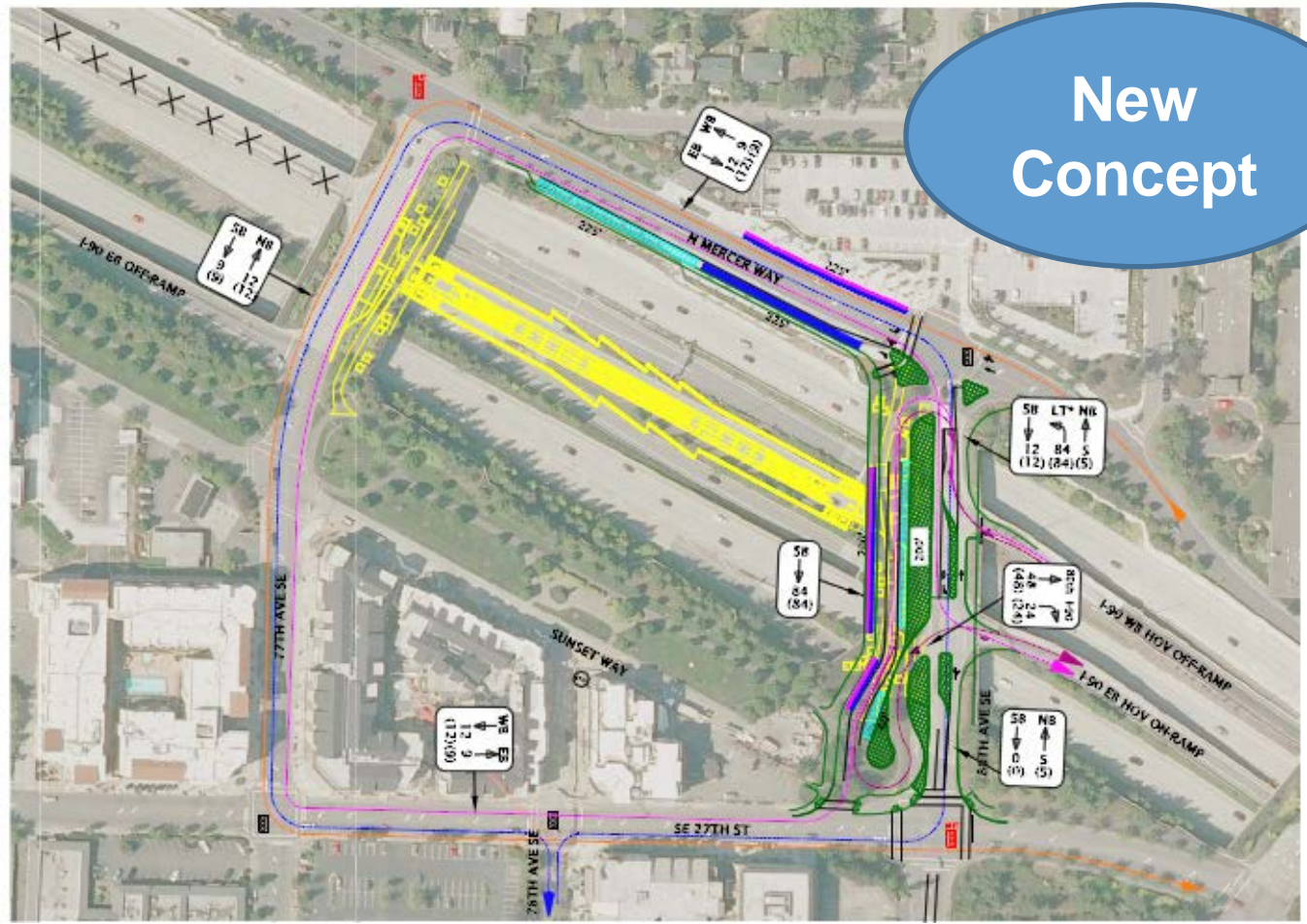
Integrated transit service outreach

What we heard at the Mercer Island Open House:

- Effort should be made to preserve bike and trail connections
- Transit Integration should work with Town Center plans
- Concern about impacts to neighborhood



**New
Concept**



Scenario 5
-80th Ave.



Next steps

- Continue coordination with Mercer Island and the public
- Mercer Island City Council discusses parking and integrated transit concepts (December 1)
- Environmental evaluation of parking and integrated transit concepts (early 2015)
- Sound Transit and Mercer Island agreement on integrated transit and parking (early 2015)
- Advance the Mercer Island station to completion of design (mid 2015). This work includes our partnering agencies; The City of Mercer Island, King County Metro and WSDOT.



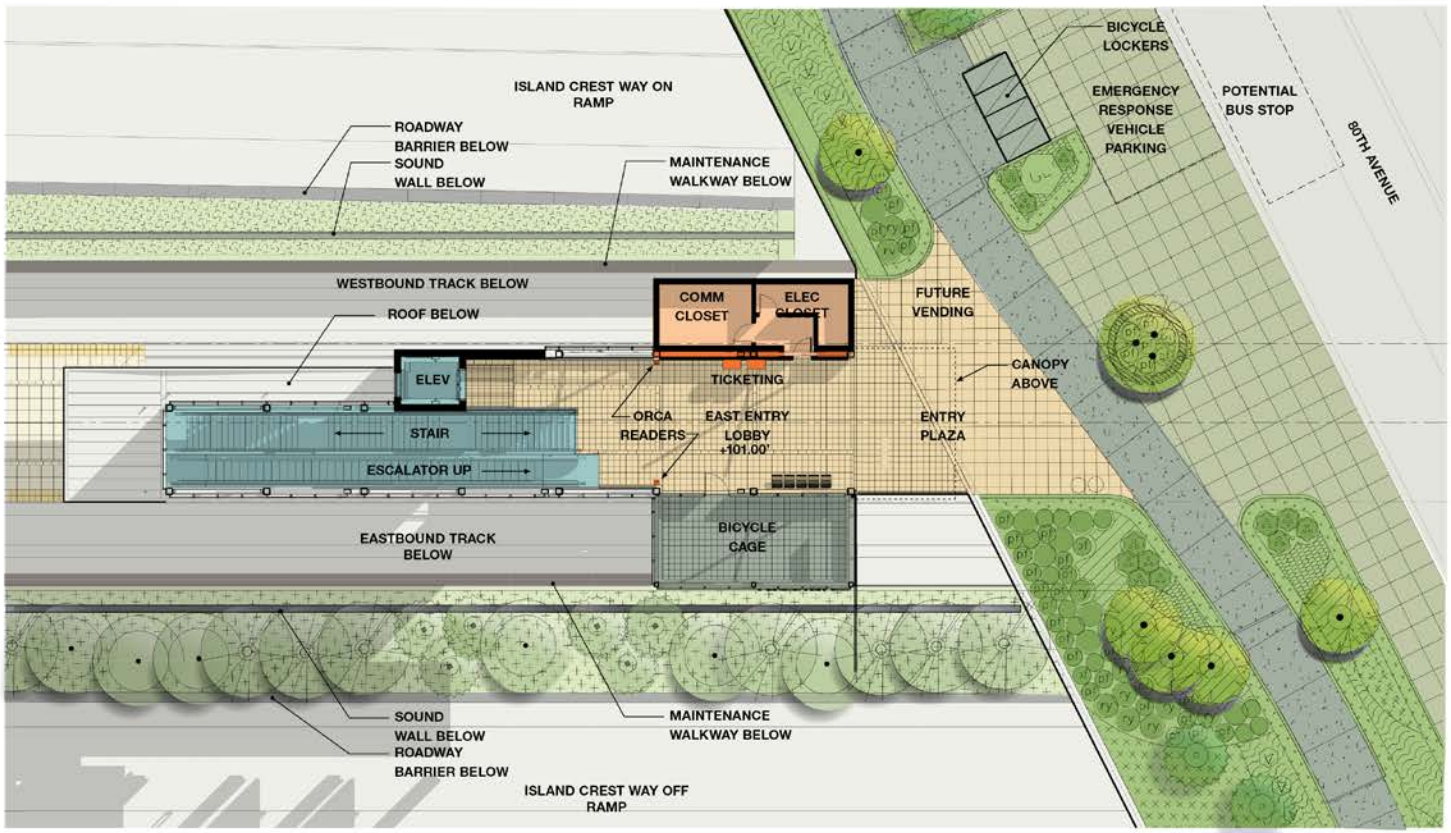
We want to hear from you!

- The City of Mercer Island and Sound Transit is accessible by phone, email and is available to meet in person
- Contact The City of Mercer Island at: 206-275-7661
- Contact Sound Transit at: 206-398-5470 or eastlink@soundtransit.org
- Attend final design community meetings
- Visit the project website: www.soundtransit.org/eastlink

Questions?



East Entry – 80th Ave Entrance Plan

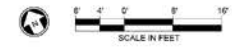


KEY MAP

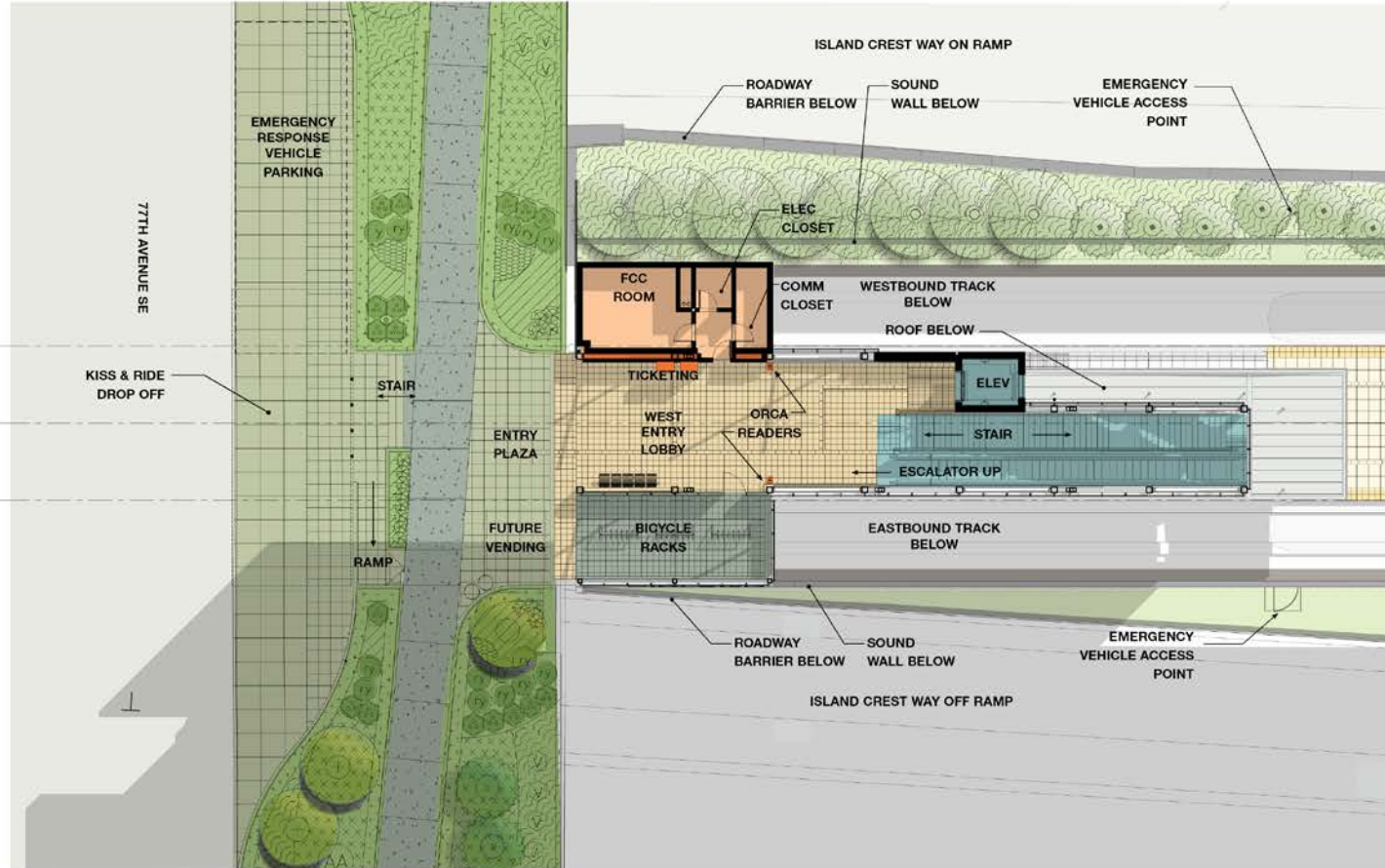
LEGEND

 Ancillary Rooms	 Platform	 Station Entry
 Bicycle Storage	 Patron Circulation	 Ticketing

B
C
E



West Entry – 77th Ave Entrance Plan



KEY MAP

- | | | |
|--|--|--|
| Ancillary Rooms | Platform | Station Entry |
| Bicycle Storage | Patron Circulation | Ticketing |

LEGEND

B

C

E

