



**East Link Extension -- Bel-Red Segment
Completion of Final Design Open House**

September 16, 2014

Tonight's agenda

5-7 p.m. – Open house

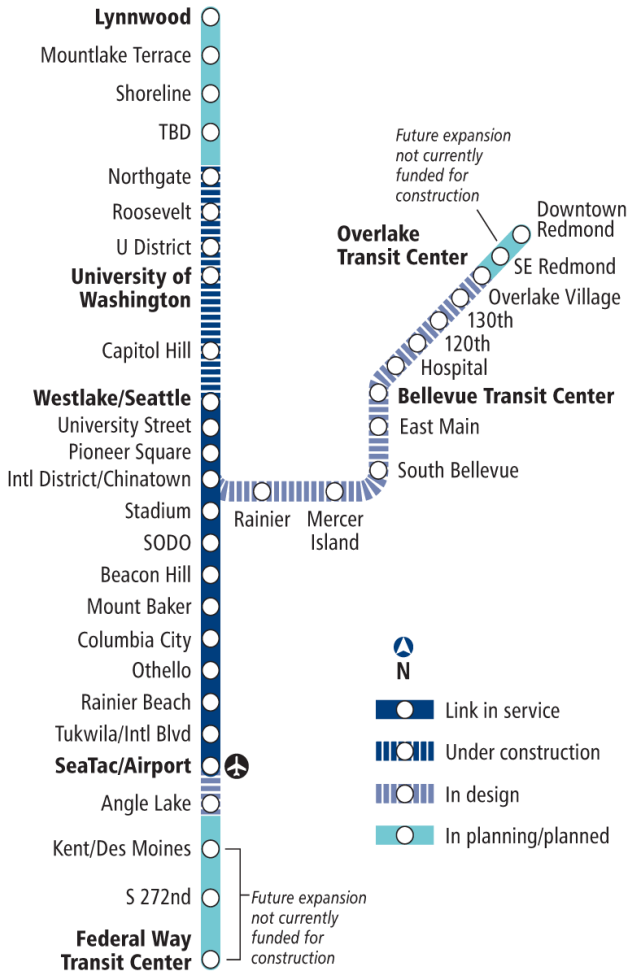
- Meet the team and view design plans

5:30 – Presentation

- Welcome and project overview (Paul Cornish)
- City of Bellevue – Bel-Red (Kate March)
- Bel-Red 130th Station (John Walser)
- STart in Bel-Red (Barbara Luecke and artist Patrick Marold)
- Non-station infrastructure and urban design (Paul Cornish)
- Light rail construction and 2015-2016 activities
- Questions and next steps



6:15 - 7:00 – Open house continues
7 p.m. – Meeting adjourns



East Link Extension

Paul Cornish, Senior Project Manager, Sound Transit

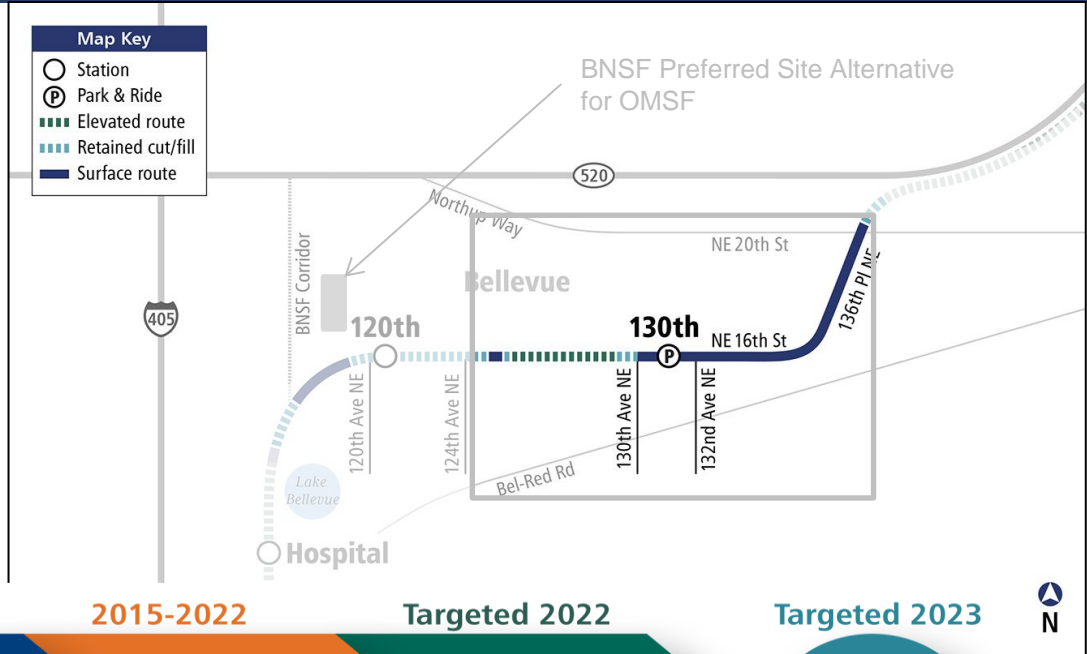


East Link overview



Bel-Red Segment overview

- At-grade, elevated and retained cut alignment
- Station at 130th
- New 300 stall park-and-ride
- Planning for future development and street improvements



City of Bellevue Projects

Kate March, City of Bellevue





City of Bellevue

Bel-Red Area Transformation





City of Bellevue

Light Rail Permitting Citizen's Advisory Committee Charge:

- Station design
- Park & rides
- Landscaping
- Accessory structures
- Noise walls
- Tunnel portals
- Public art



City of Bellevue

City's Role During East Link Construction

1) Permitting & Inspection

- Requires Sound Transit and other utility companies to meet our city codes

2) Maintenance of Traffic

- Works with Sound Transit to develop a plan to keep vehicles moving, and monitors implementation

3) General Coordination

- Partners with Sound Transit and utility companies to facilitate a smooth construction process

A photograph of a Sound Transit train on tracks, viewed from a low angle. The train is white with a large front window. The text "SOUND TRANSIT" is visible on the front window and on the front panel. The entire image is overlaid with a semi-transparent green filter.

Final 130th Station Design

John Walser, Senior Architect, Sound Transit

View east from 130th Ave. NE



Site plan (Before NE Spring Blvd. Extension)



Site plan (After NE Spring Blvd. Extension)



* Graphic from 60% Design

Station landscaping and design materials



Station entrance from 132nd Ave. NE



Station entrance from 132nd Ave. NE - twilight



Platform view looking west



View of 130th Ave. NE utility enclosure



Bike cage and SE plaza



ST art

Barbara Luecke, Sound Transit Art

**East Link Extension
*130th Station***

Artist: Patrick Marold

Site: Balustrades/Art Railing



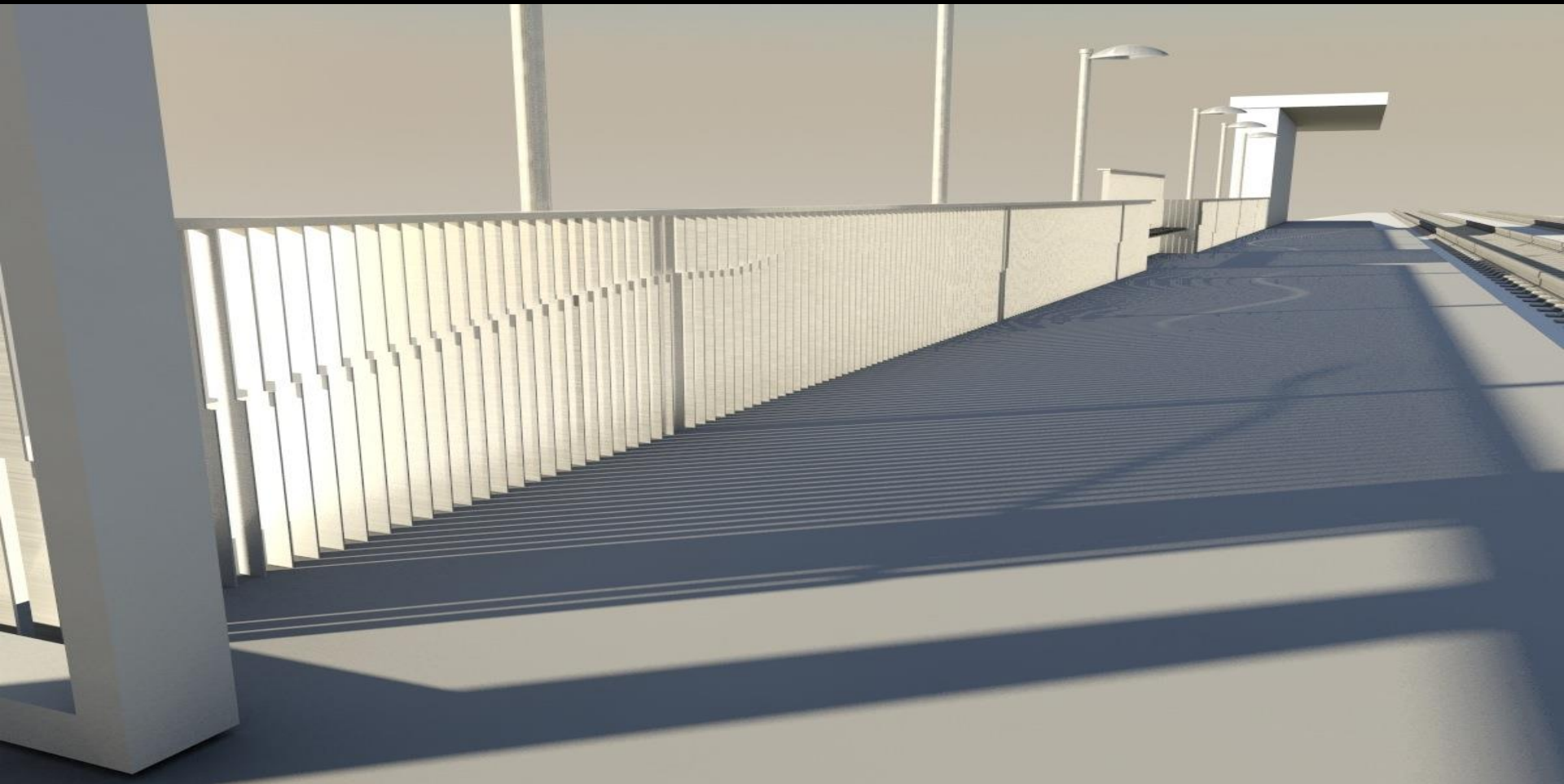


***ST*art on Link**

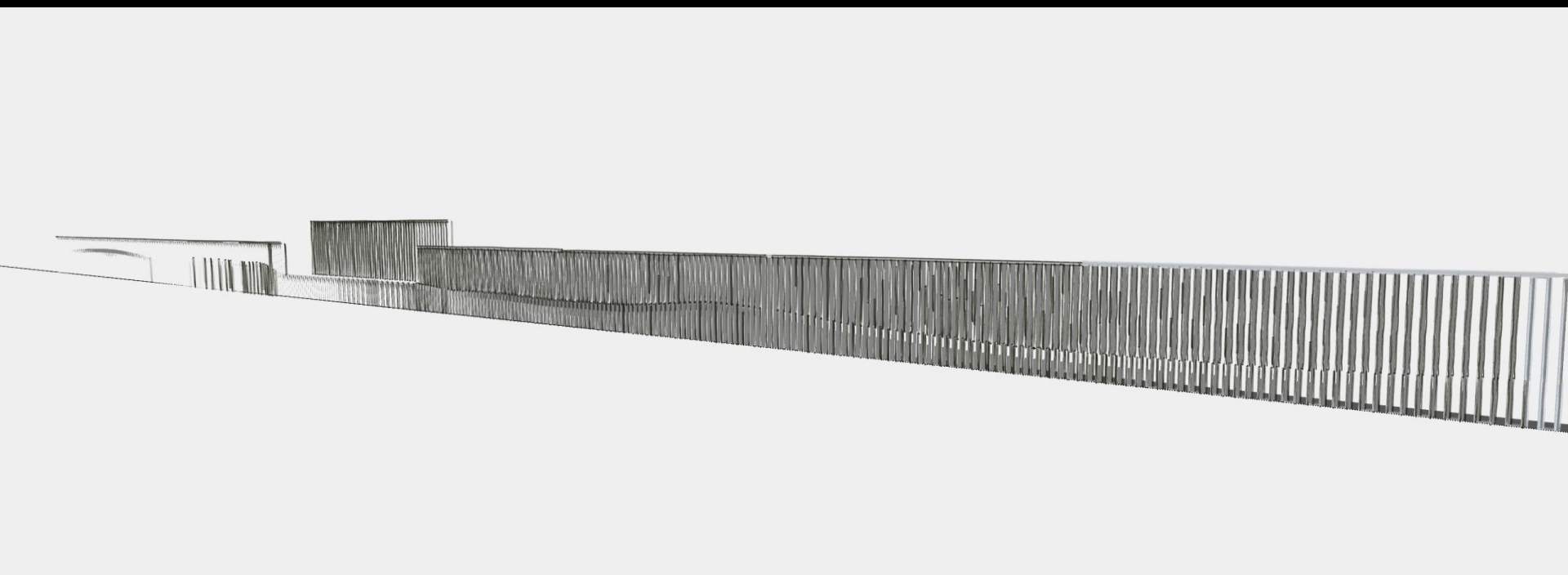


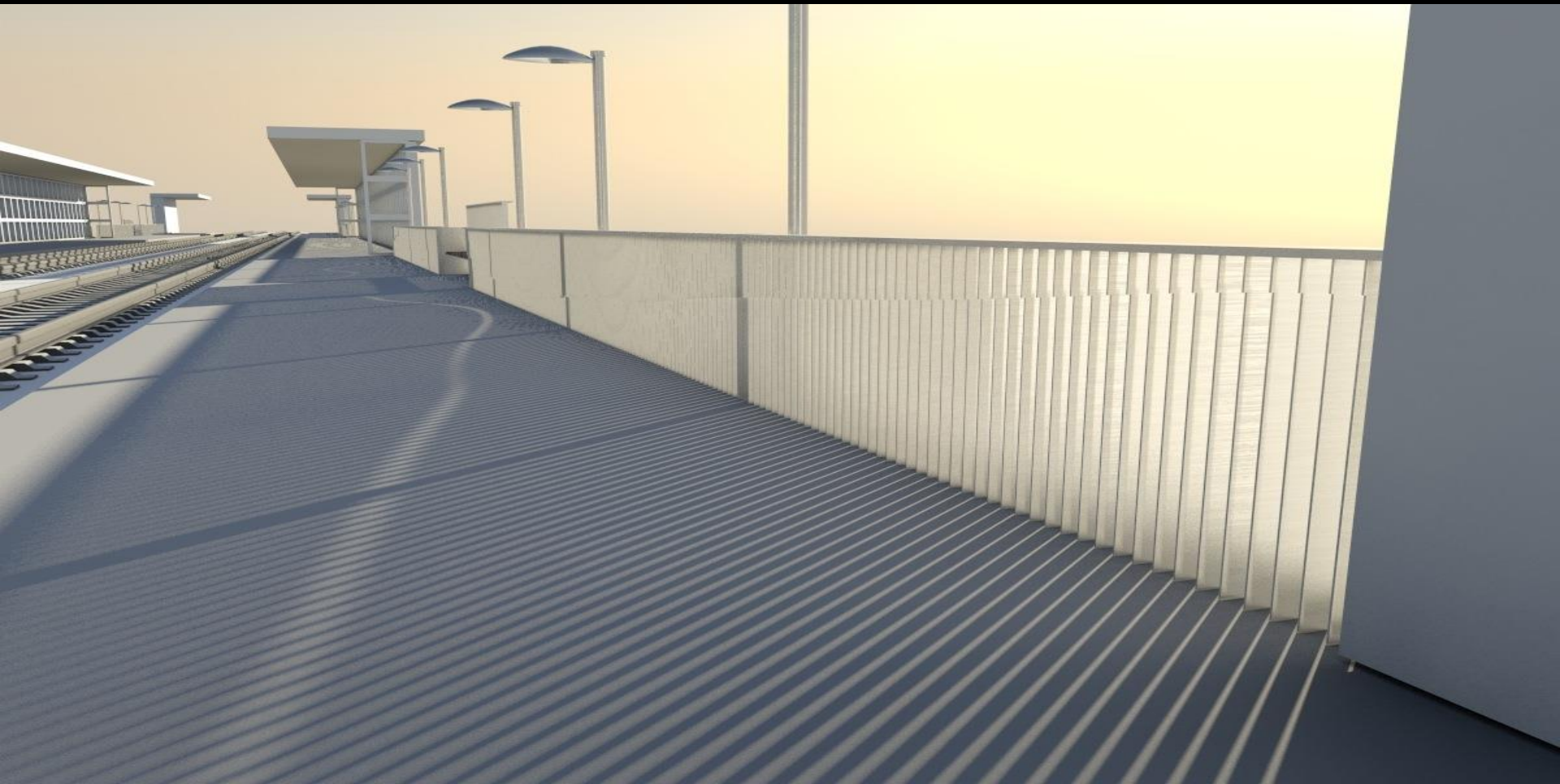
Sound Transit Art Program





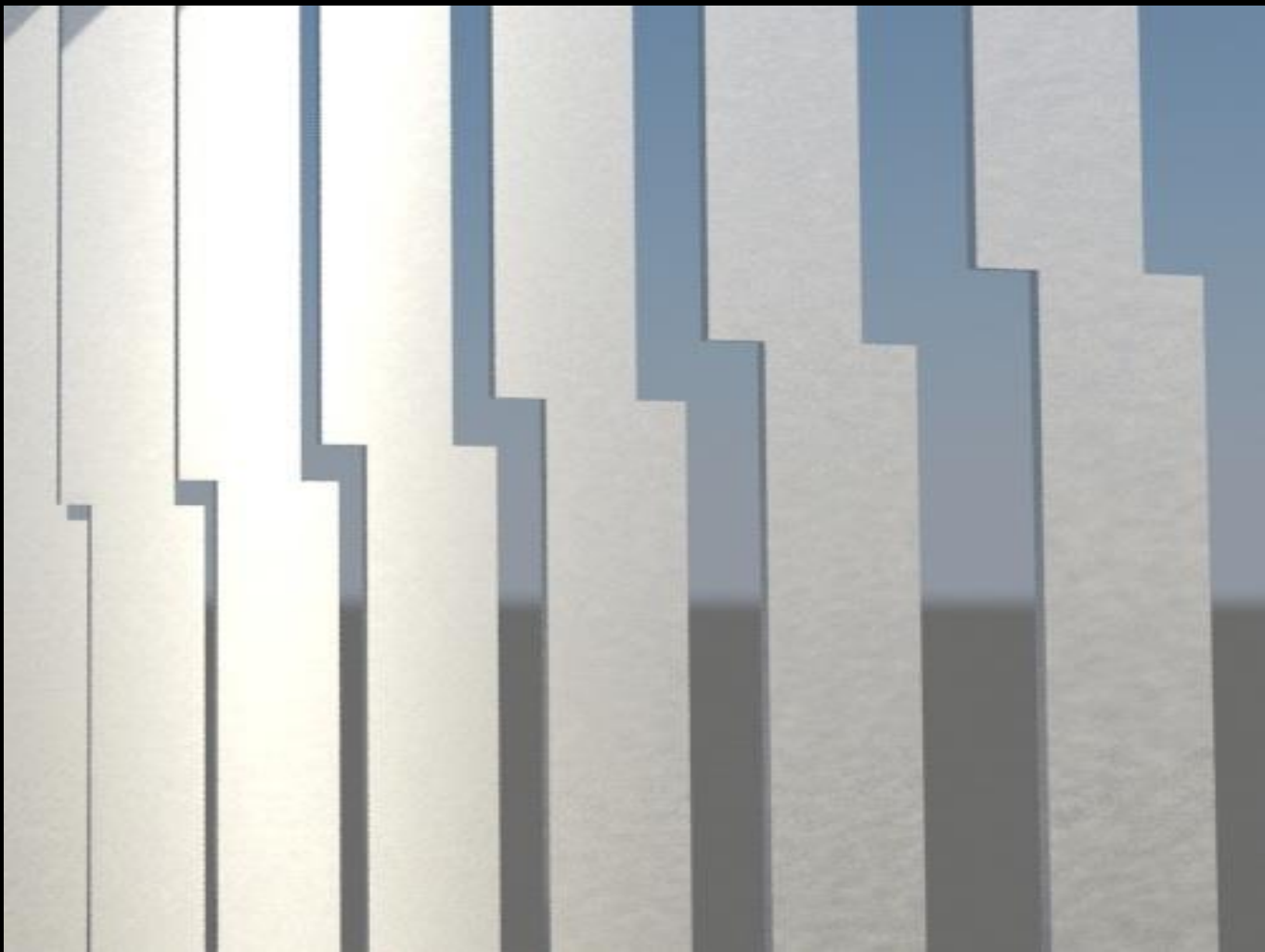


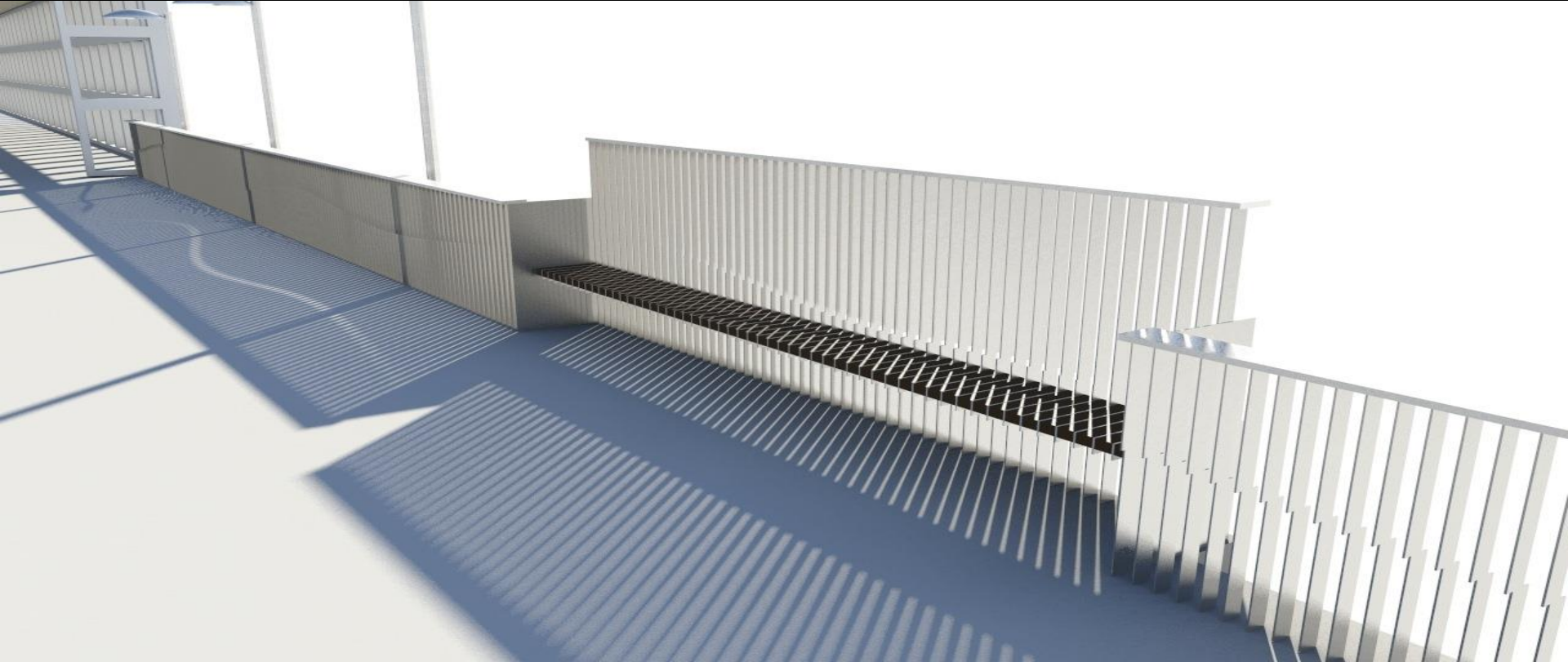












Bel-Red Alignment

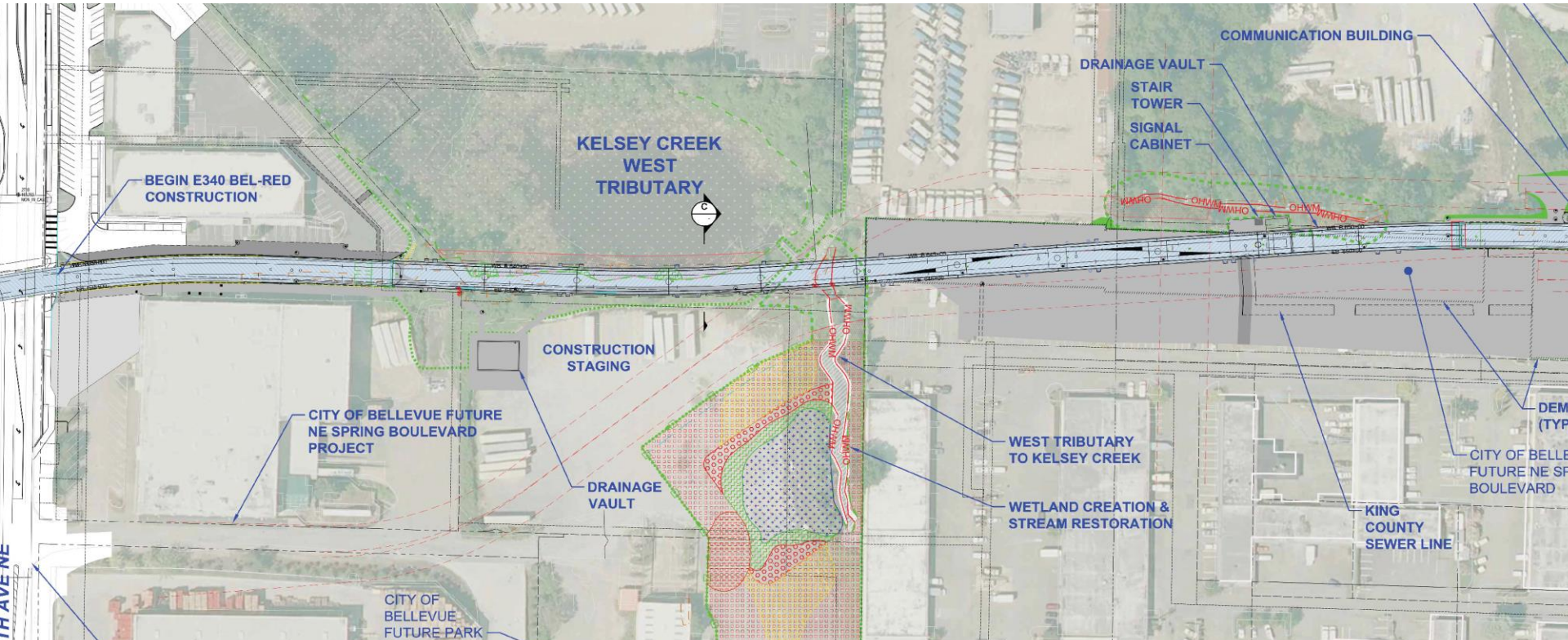
Non-station Infrastructure and Urban Design

Paul Cornish, Senior Project Manager



Connecting stations and urban design

Non-station infrastructure are the connective components that join each individual station to create the 14-mile, ten-station East Link alignment.



A photograph of a Sound Transit train on tracks, viewed from a front-quarter perspective. The train is white with a large windshield and a destination sign that reads "SOUND TRANSIT". The image is overlaid with a teal gradient.

Construction Planning is Underway

Paul Cornish, Senior Project Manager

Light rail construction overview

East Link in Bel-Red includes building at-grade, elevated and retained-cut rail construction.

2015 and 2016

Construction begins in Bel-Red

2023

Open for service



Relocate utilities

Utility relocation work includes replacing aging utilities in the project area and relocating utilities so they can be accessed for maintenance and repair.



Early Utility Relocations
Intermittant work over 2 years

Prepare the work zone

Crews must clear buildings and soil and prepare the work zone for East Link construction crews. This includes erecting barriers and fencing to keep the work zone safe.



Build station and supporting infrastructure

Next, Sound Transit lays the foundations necessary to run light rail track and builds stations and supporting infrastructure.



Sound Transit Civil Construction
Approximately 3 years of phased work

Install track and power

Sound Transit installs track and wire while placing poles and ancillary structures that power the system and operate the signals.



Install and test systems

Before light rail opens to passengers, Sound Transit completes a safety commissioning process that includes testing communications, safety and emergency systems, as well as signals and crossing gates.



Systems Integration
Approximately 3.5 years of phased work

2015 and 2016 early construction activity

Work look-ahead for Bel-Red



Advance utility relocations

- Intermittent work over two years
- Utility owners relocate their infrastructure prior to Sound Transit construction

Bel-Red utility services:

Advance work
2015 - 2016

- Olympic Pipeline
- Puget Sound Energy (electric and gas)
- Telecommunication Companies

Sound Transit
work after 2016

- King County and City of Bellevue Sewer and Stormwater
- City of Bellevue Drinking/Potable Water
- Telecommunication Companies

Utility relocations – Overview of impacts

Overview of typical impacts:

- Temporary utility service disruptions
- Traffic circulation and access impacts
- Blocked off work areas
- Trucks hauling materials
- Noise, vibration, dust and debris
- Changes to mail, transit operations and other services
- Storage of work materials and equipment



Sound Transit 24/7 construction hotline:
888-298-2395

Next Steps



What's next?

- Select station names
- Execute utility agreements
- Hire contractors
- Secure permits
- Continue community outreach



We want to hear from you!



- Sound Transit Community Outreach staff is accessible by phone, email, and is available to meet in person
- Contact Community Outreach staff: eastlink@soundtransit.org or 206-398-LINK
- Sign-up to receive email updates: www.soundtransit.org/subscribe
- Visit the project website: www.soundtransit.org/eastlink

Comment tonight – tell us how would you like to stay informed during construction.

Comments or questions?

