



East Link Extension Downtown Bellevue Final Design Open House

May 16, 2013

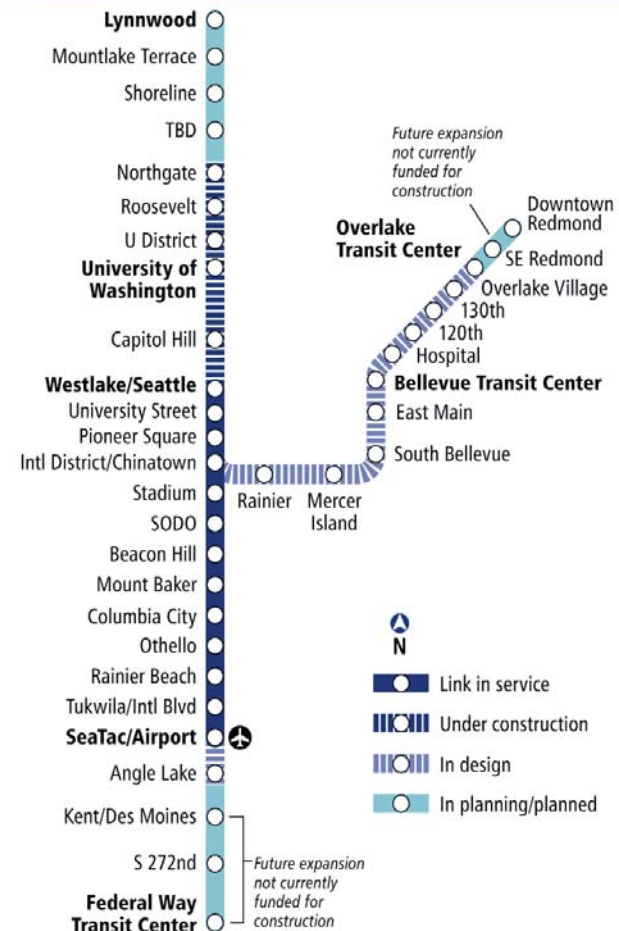
Tonight's agenda

- **5-7 p.m. – Open house**
 - Meet the team
 - View design plans
 - Tell us what you think!
- **5:30 – Presentation**
 - Welcome and introductions (Katie Kuciemba)
 - East Link overview (Sue Comis)
 - Station design update (Mark Reddington)
 - *STart* (Barbara Luecke)
 - Questions and answers
- **6:00 – Return to open house**
- **7:00 - Close**



Link light rail system

- 16 miles of light rail with 13 stations currently in service
- University Link under construction; opens 2016
- ST2 Plan funded extensions to Overlake, South King County, and Lynnwood
- 50+ mile system
- New Operations and Maintenance Satellite Facility



East Link Overview

Length: 14 miles

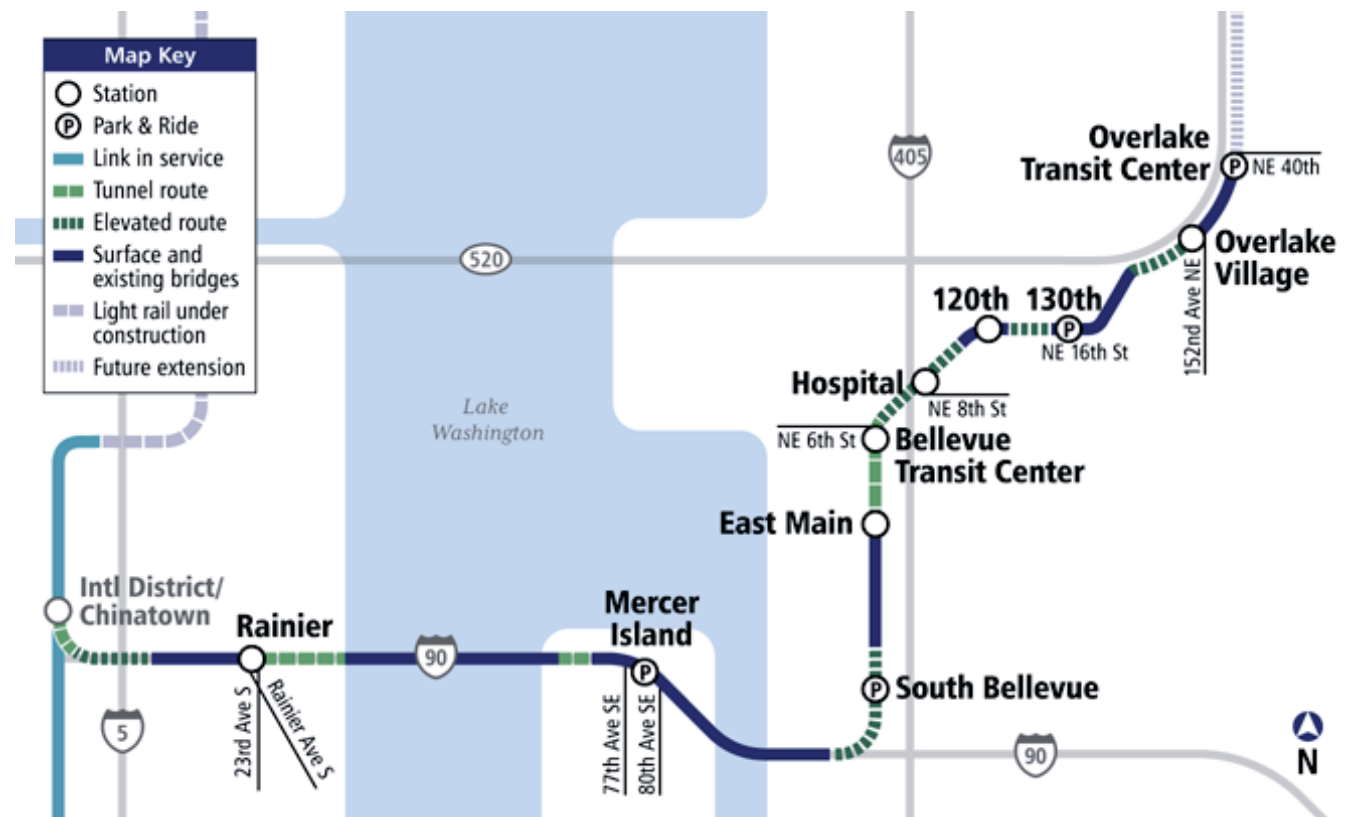
Ride times:

- Mercer Island to UW: 20 min.
- S. Bellevue to Airport: 50 min.
- Overlake Transit Center to Bellevue Transit Center: 10 min.

Rider projection: 50,000 daily by 2030

Budget: \$2.8 billion (2010 \$)

Start of Service: Targeted 2023

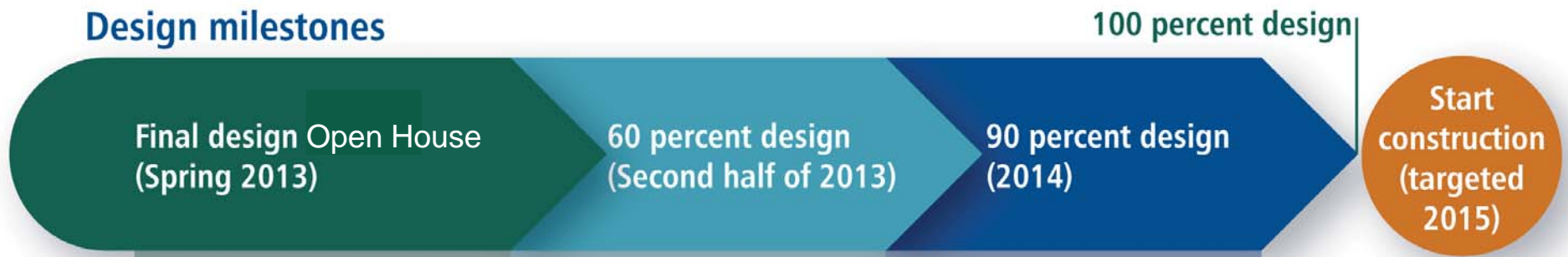


East Link timeline



What you can expect during final design

Design milestones



Cost savings process and next steps

- Sound Transit Board and Bellevue City Council approved \$30-53 million in cost savings; finalized East Link alignment
- Up to \$5 million of the cost savings will be used to enhance pedestrian access and weather protection at the downtown Bellevue station



Downtown Bellevue Segment overview

- Serves downtown Bellevue and medical district and Wilburton area
- Tunnel and elevated alignment
- Two stations in this segment:
 - Bellevue Transit Center: NE 6th St. between 110th Ave & 112th Ave
 - Hospital Station: just north of NE 8th St in the former BNSF corridor
- Approximately 8,500 daily boardings (2030)





LEGEND

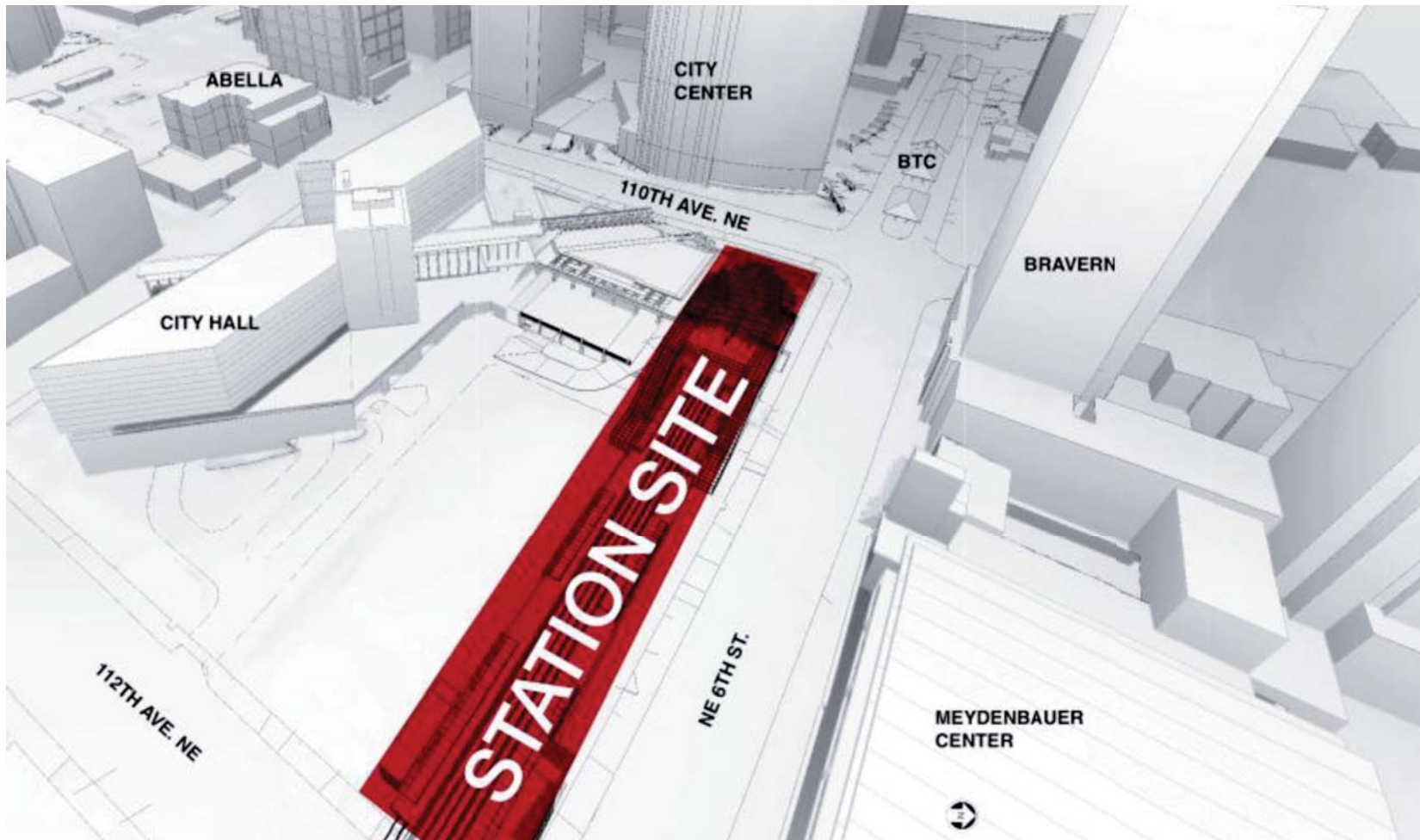
-  BUS ROUTE
-  BICYCLE ROUTE
-  BICYCLE LANE
-  OFF STREET PATH
-  LIGHT RAIL TRACKS
-  STATION
-  PATRON CATCHMENT AREA

CITY OF BELLEVUE - 2009 PEDESTRIAN & BICYCLE TRANSPORTATION PLAN

-  COMMERCIAL
-  CIVIC / INSTITUTIONAL
-  MULTI-FAMILY RESIDENTIAL
-  HOTEL
-  PARKING STRUCTURE



Bellevue Transit Center Station: Neighborhood context plan



Bellevue Transit Center Station: Site location

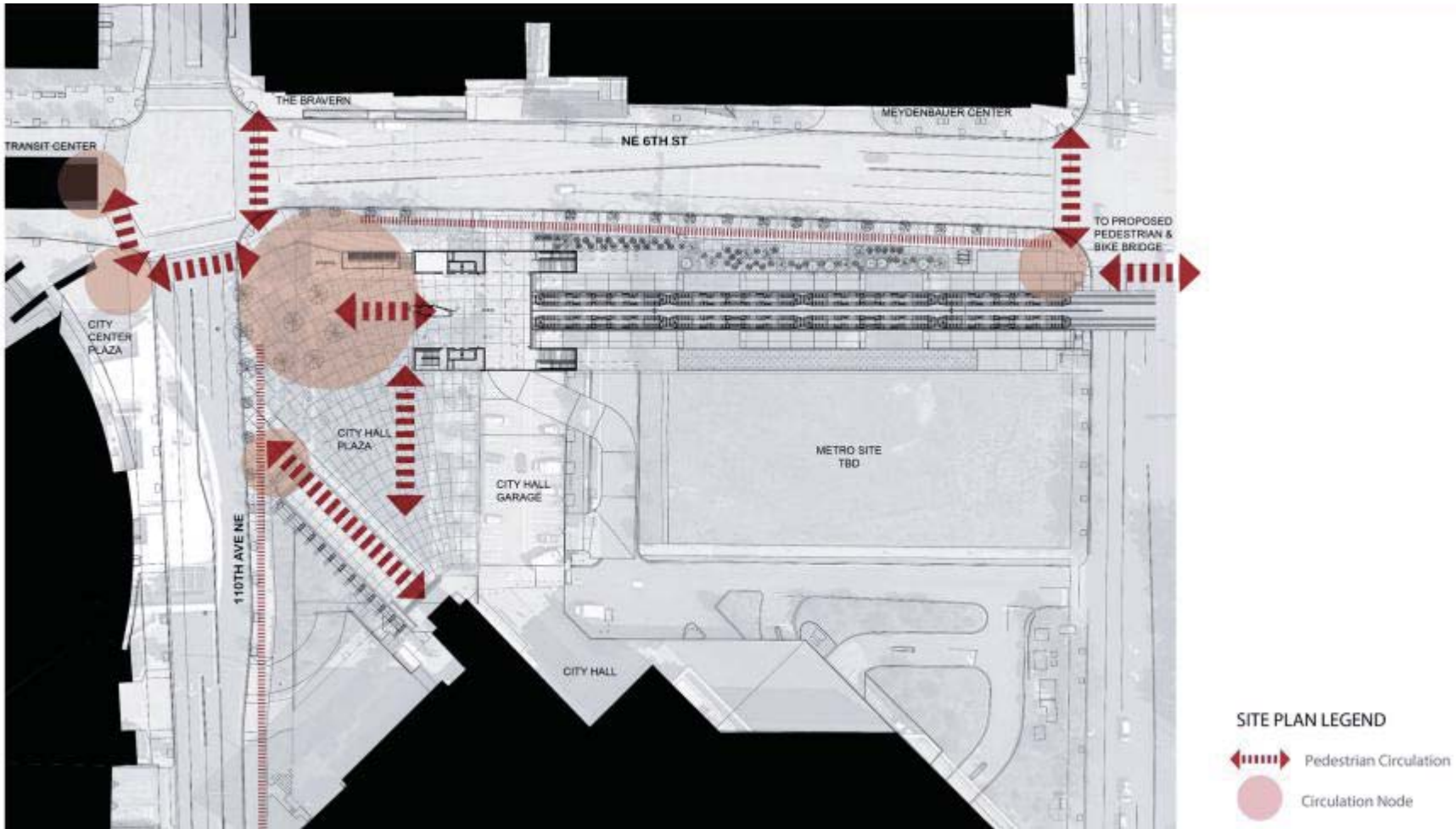


Looking Southeast

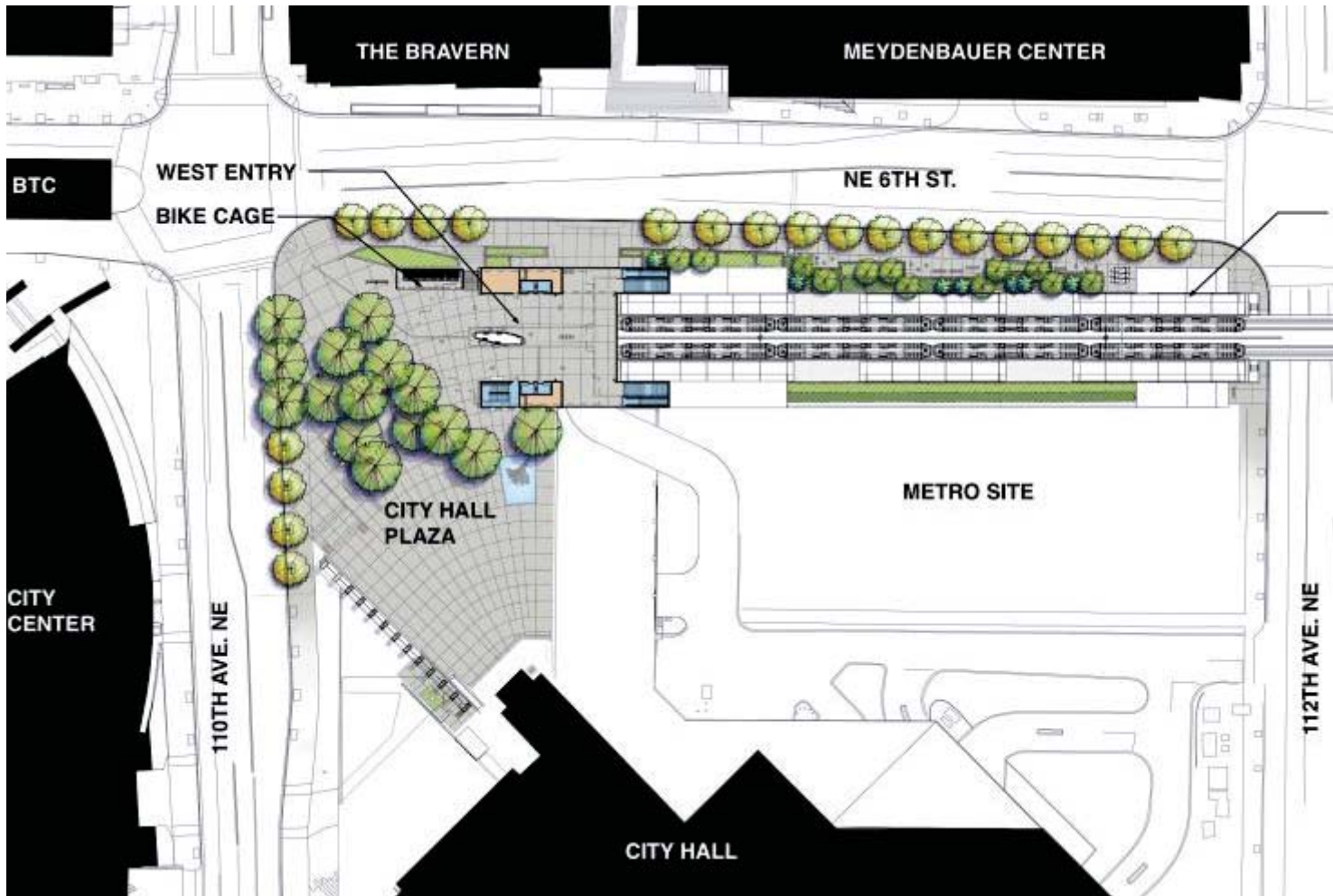


Looking Southwest

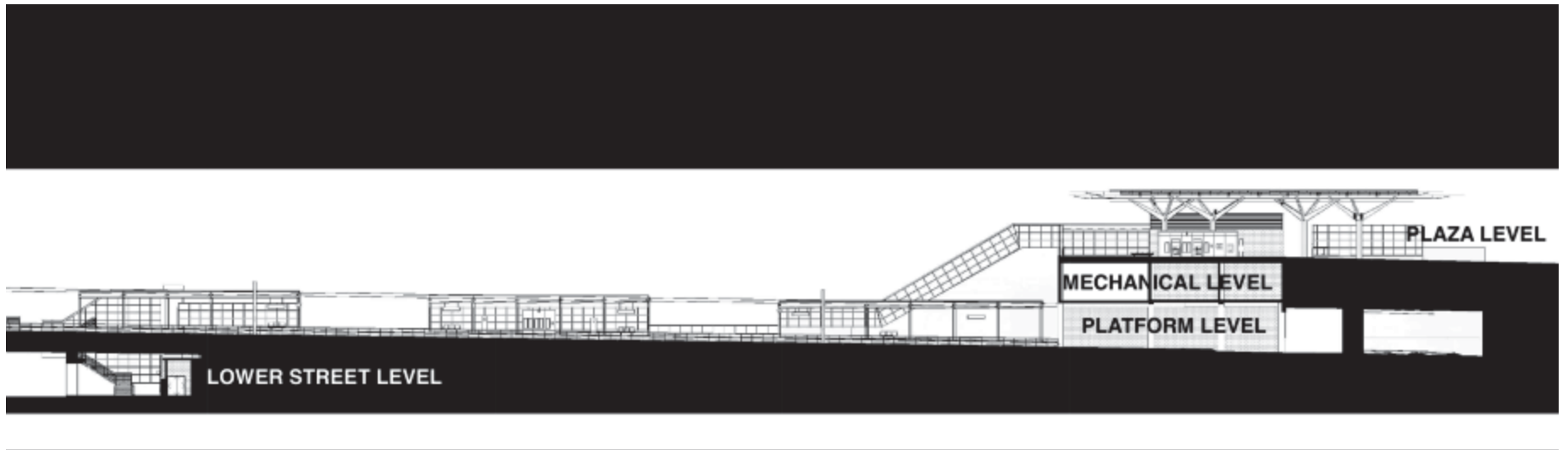
Bellevue Transit Center Station: Existing site photos



Bellevue Transit Center Station: Station area connections plan



Bellevue Transit Center Station: Site plan



Bellevue Transit Center Station: Longitudinal cross section looking south



Bellevue Transit Center Station: East entrance at 112th Ave NE & NE 6th St.



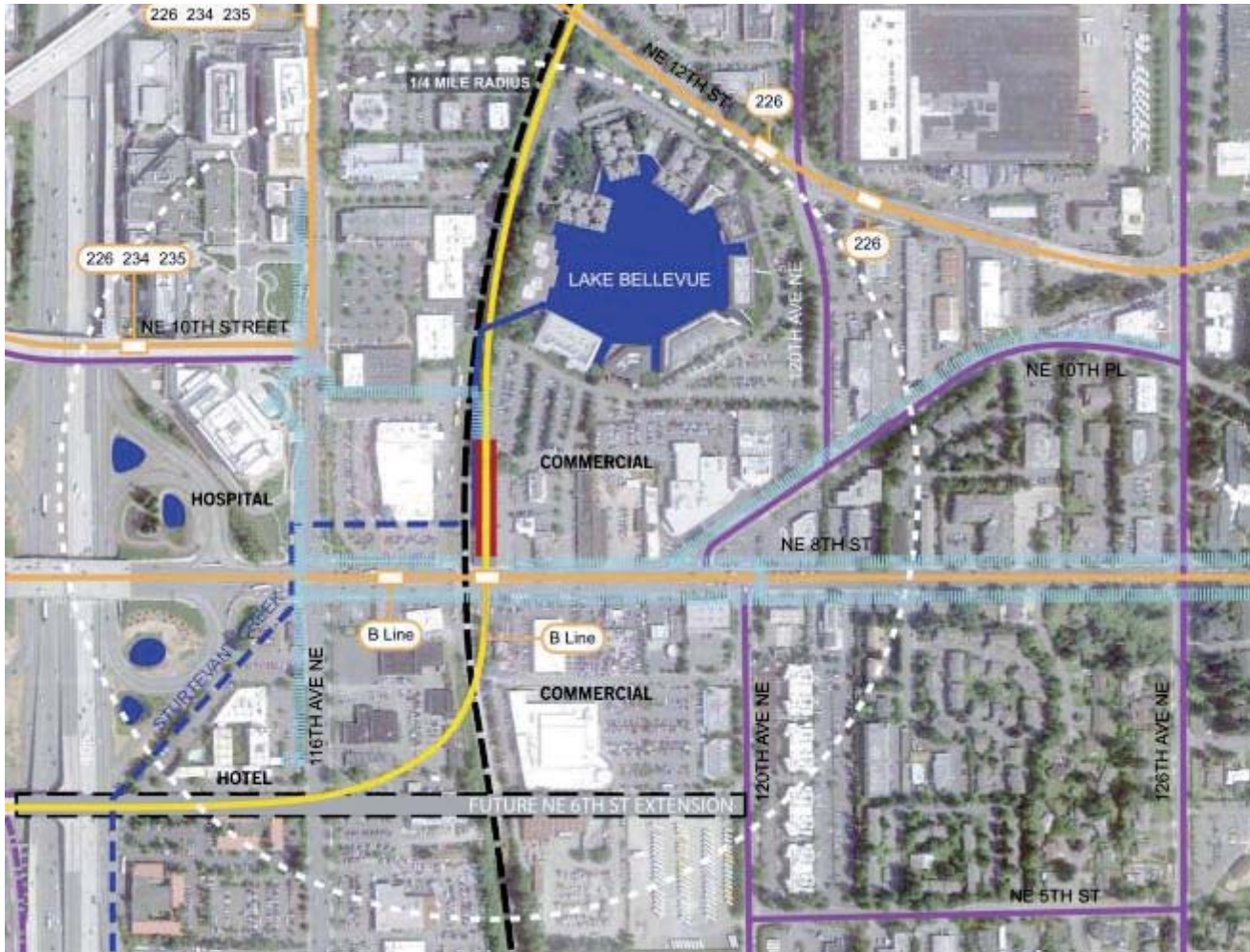
Bellevue Transit Center Station: Platform view looking west



Bellevue Transit Center Station: West entrance near 110th Ave NE & NE 6th St.



Bellevue Transit Center Station: Aerial view looking southeast



LEGEND

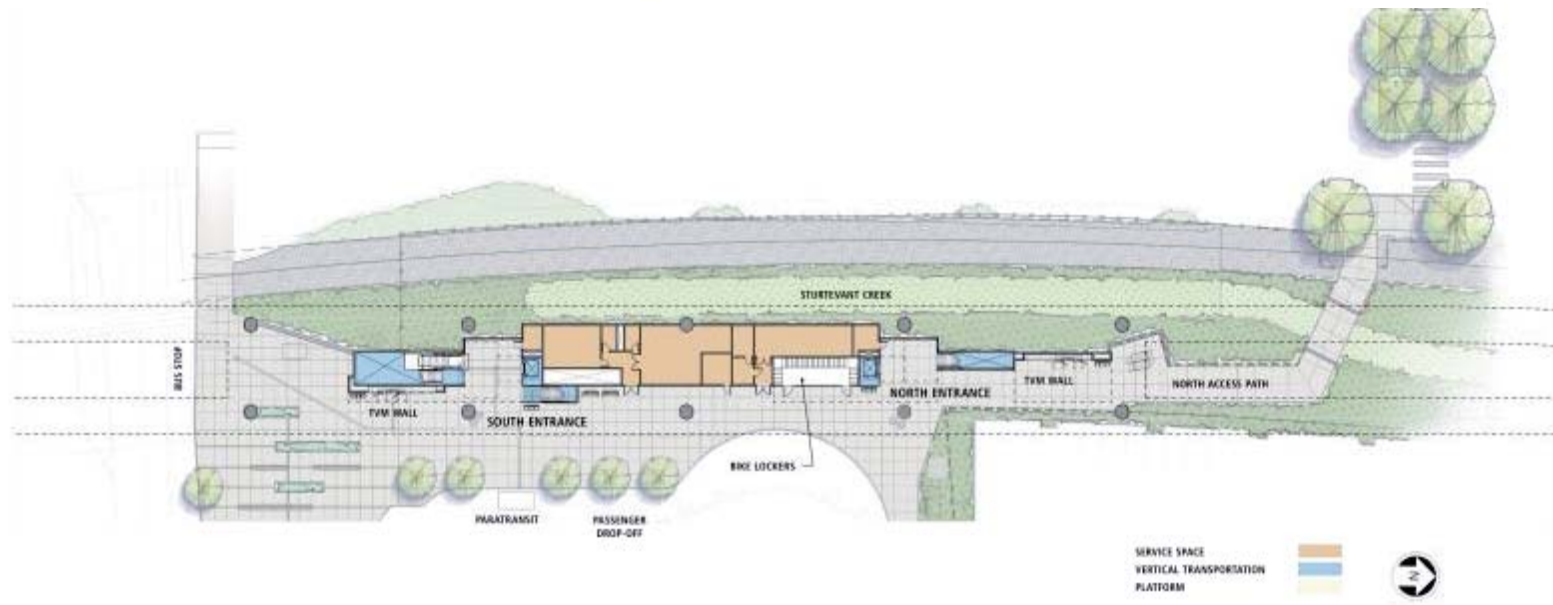
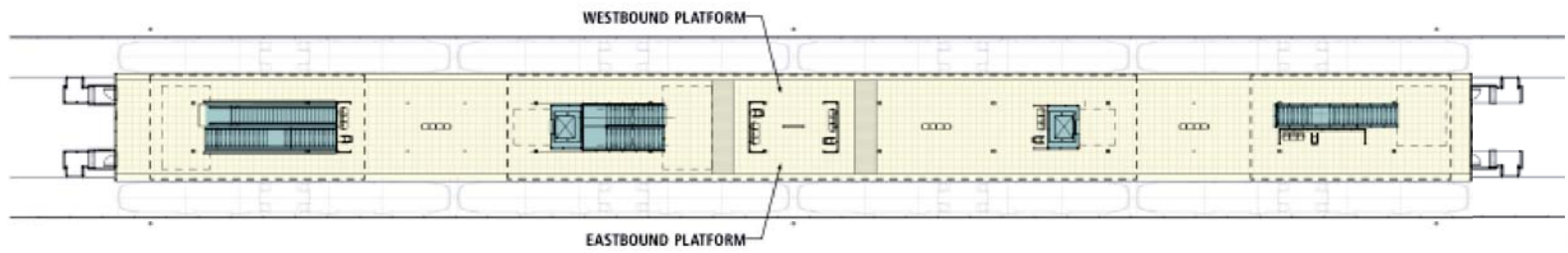
-  BUS ROUTE
-  BUS STOP
-  SHARED ROADWAY
-  BICYCLE TRAIL
-  DEDICATED BICYCLE LANE
-  LIGHT RAIL TRACK
-  STATION
-  PEDESTRIAN CIRCULATION
-  FUTURE NE 6TH ST EXTENSION CITY OF BELLEVUE
-  SURFACE WATERWAYS
-  POTENTIAL ELEVATED TRAIL OR COMMUTER RAIL



Hospital Station: neighborhood context plan



Hospital Station: Site plan & surface walkway



Hospital Station: Site plans (Platform & Ground Level)



Hospital Station: View of station looking northwest



Hospital Station: South entrance looking west



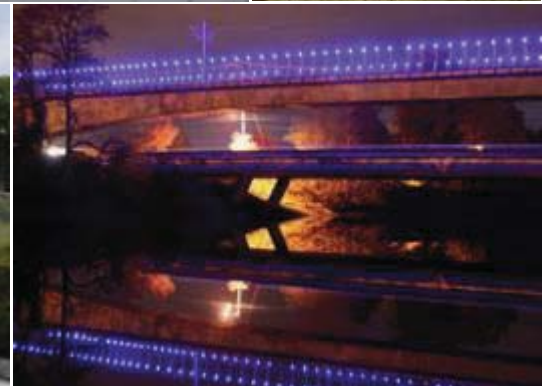
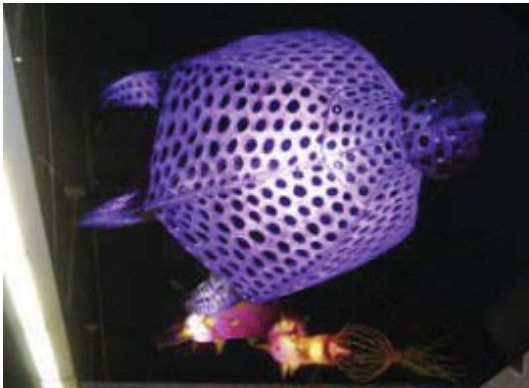
Hospital Station: platform view looking north

Permanent station names

- Reflect the nature of the community and environment
- Succinct and easy to read
- Comply with federal Americans with Disabilities Act guidelines and limited to 30 characters
- Avoid commercial references
- Avoid similar names or words in existing facilities



Sound Transit Art Program *Start on* **LINK**



Next steps

- Continue coordination with local jurisdictions
- Station naming outreach
- Select station artists
- Advance design to 60% milestone

Next East Link Meeting:

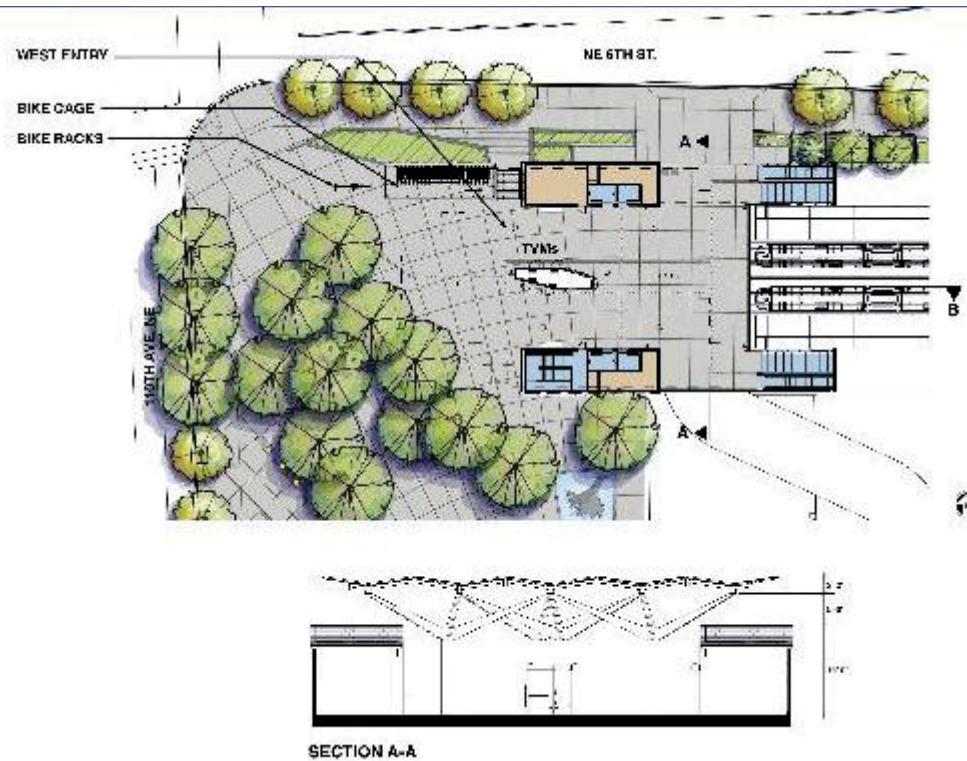
- South Bellevue Segment, May 30th
 - 5 – 7pm, Bellevue Hilton Hotel

We want to hear from you!

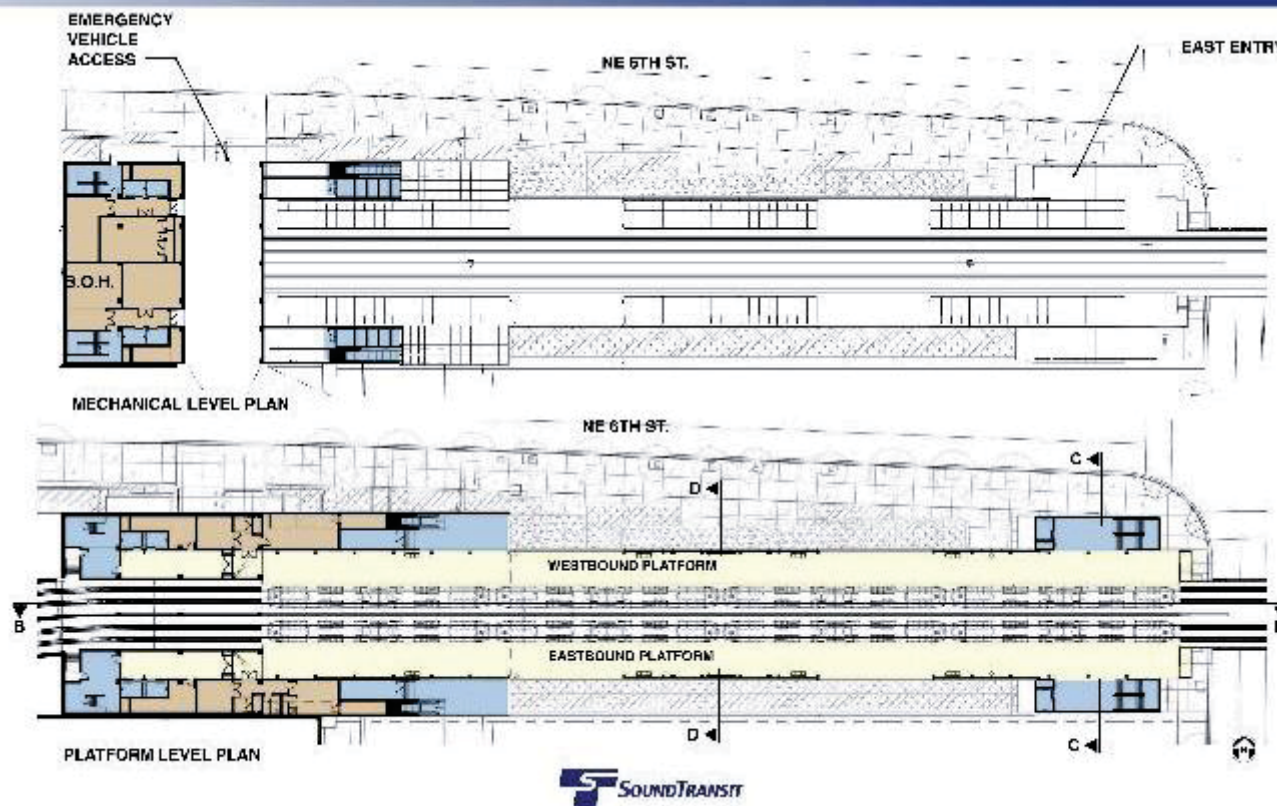
- Sound Transit Community Outreach staff is accessible by phone, email, and is available to meet in person
- Contact Community Outreach staff: eastlink@soundtransit.org or 206-398-5470
- Attend final design community meetings
- Sign-up to receive email updates: www.soundtransit.org/subscribe
- Visit the project website: www.soundtransit.org/eastlink

Questions?

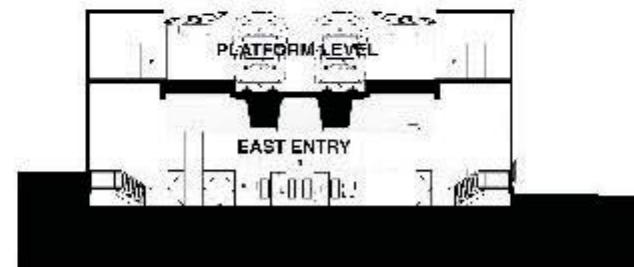
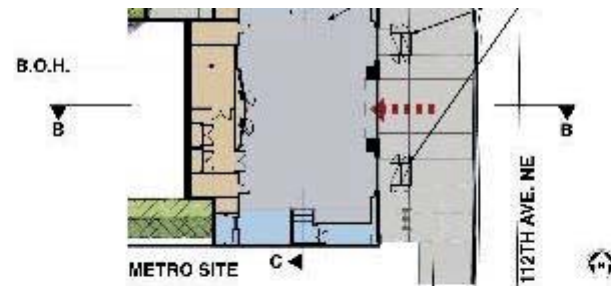




Bellevue Transit Center Station: West entry plan



Bellevue Transit Center Station: Mezzanine and platform level plans



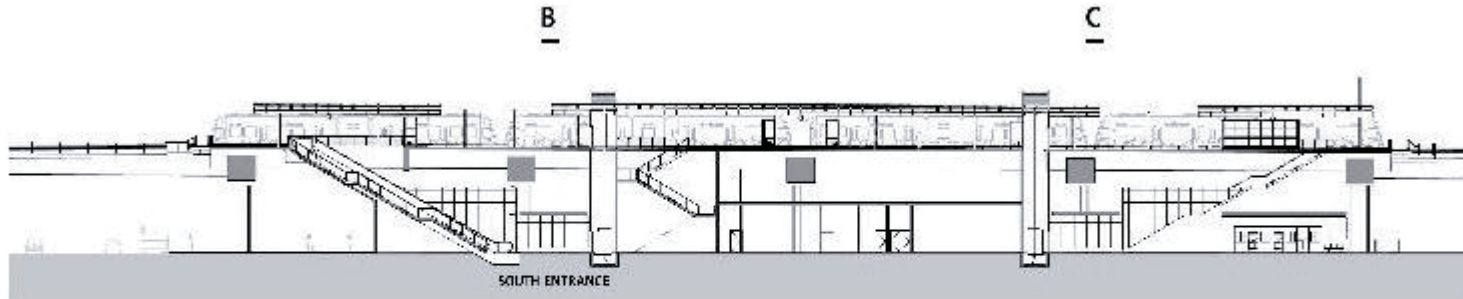
SECTION C-C

Bellevue Transit Center Station: Lower street level plan

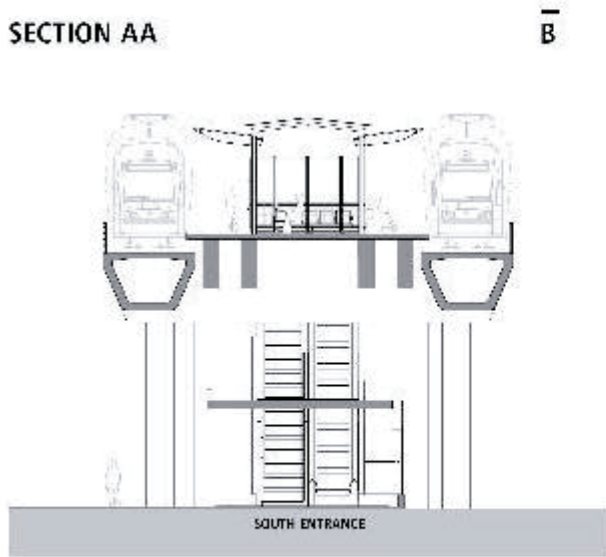


SECTION D-D

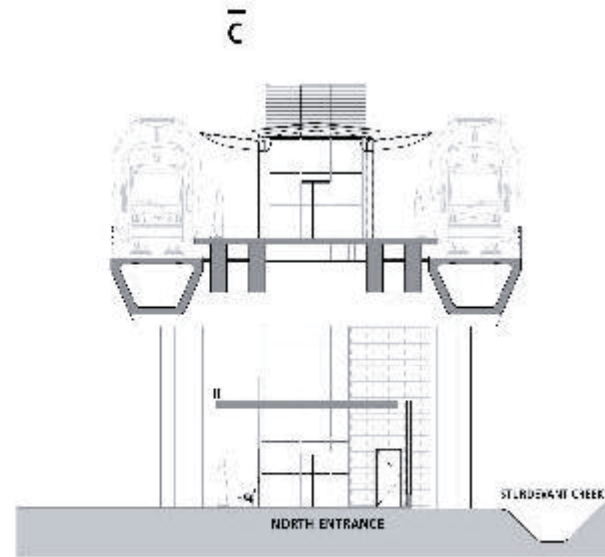
Bellevue Transit Center Station: Cross sections looking west



SECTION AA



SECTION BB



SECTION CC

Hospital Station cross sections