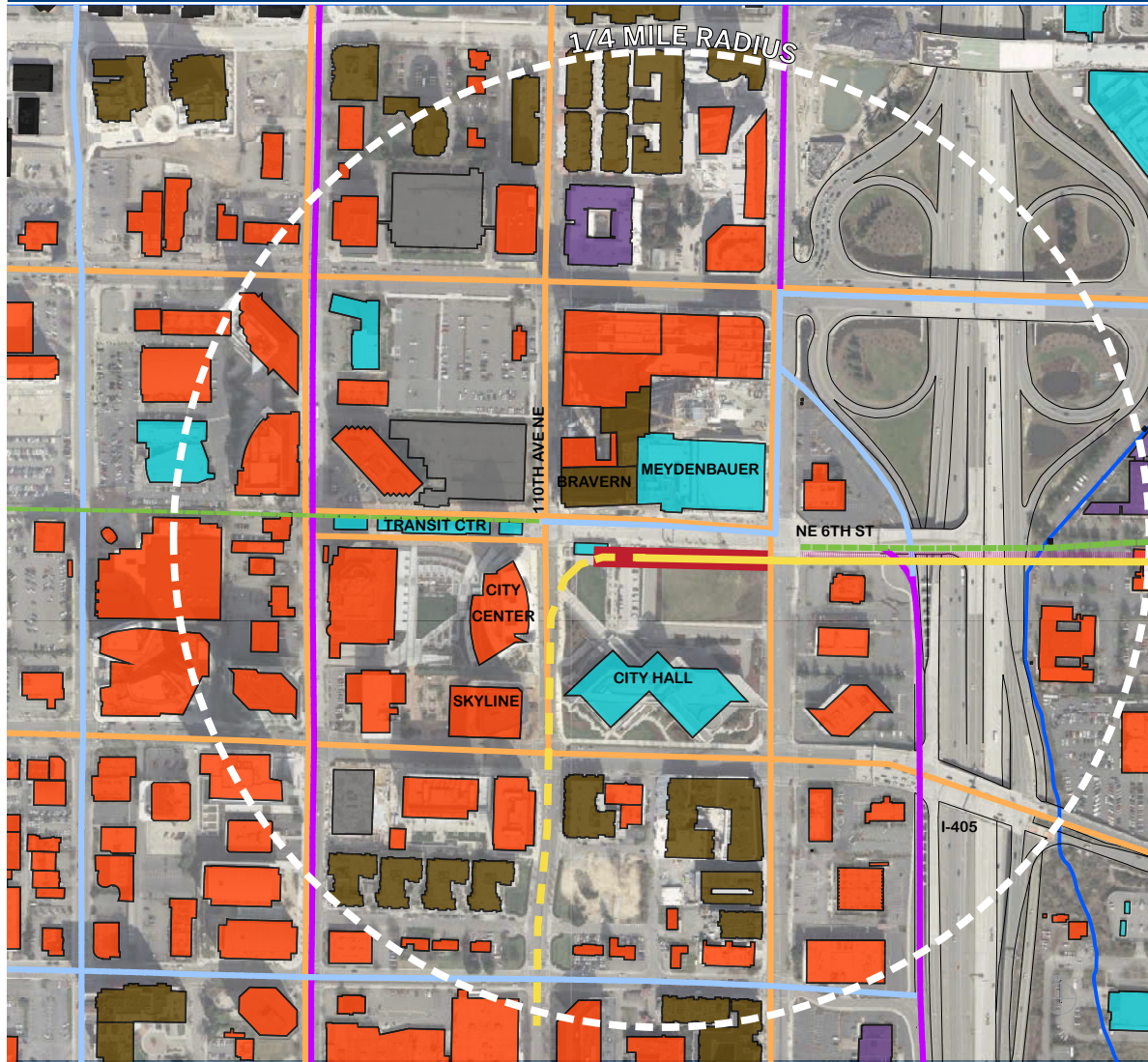


# BELLEVUE TRANSIT CENTER STATION

## EAST LINK EXTENSION



### LEGEND

- BUS ROUTE
- BICYCLE ROUTE
- BICYCLE LANE
- OFF STREET PATH
- LIGHT RAIL TRACKS
- STATION
- PATRON CATCHMENT AREA

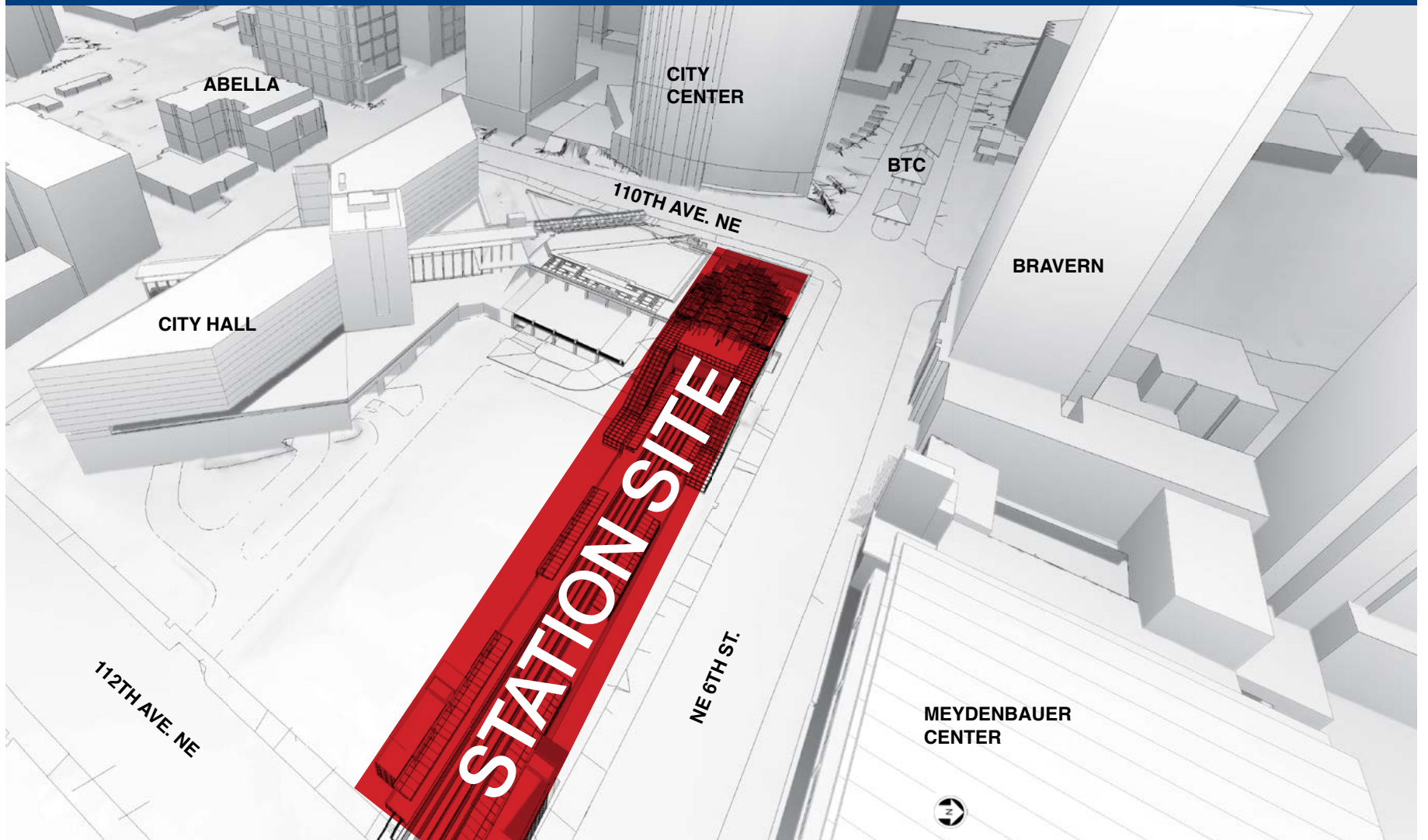
### CITY OF BELLEVUE - 2009 PEDESTRIAN & BICYCLE TRANSPORTATION PLAN

- COMMERCIAL
- CIVIC / INSTITUTIONAL
- MULTI-FAMILY RESIDENTIAL
- HOTEL
- PARKING STRUCTURE



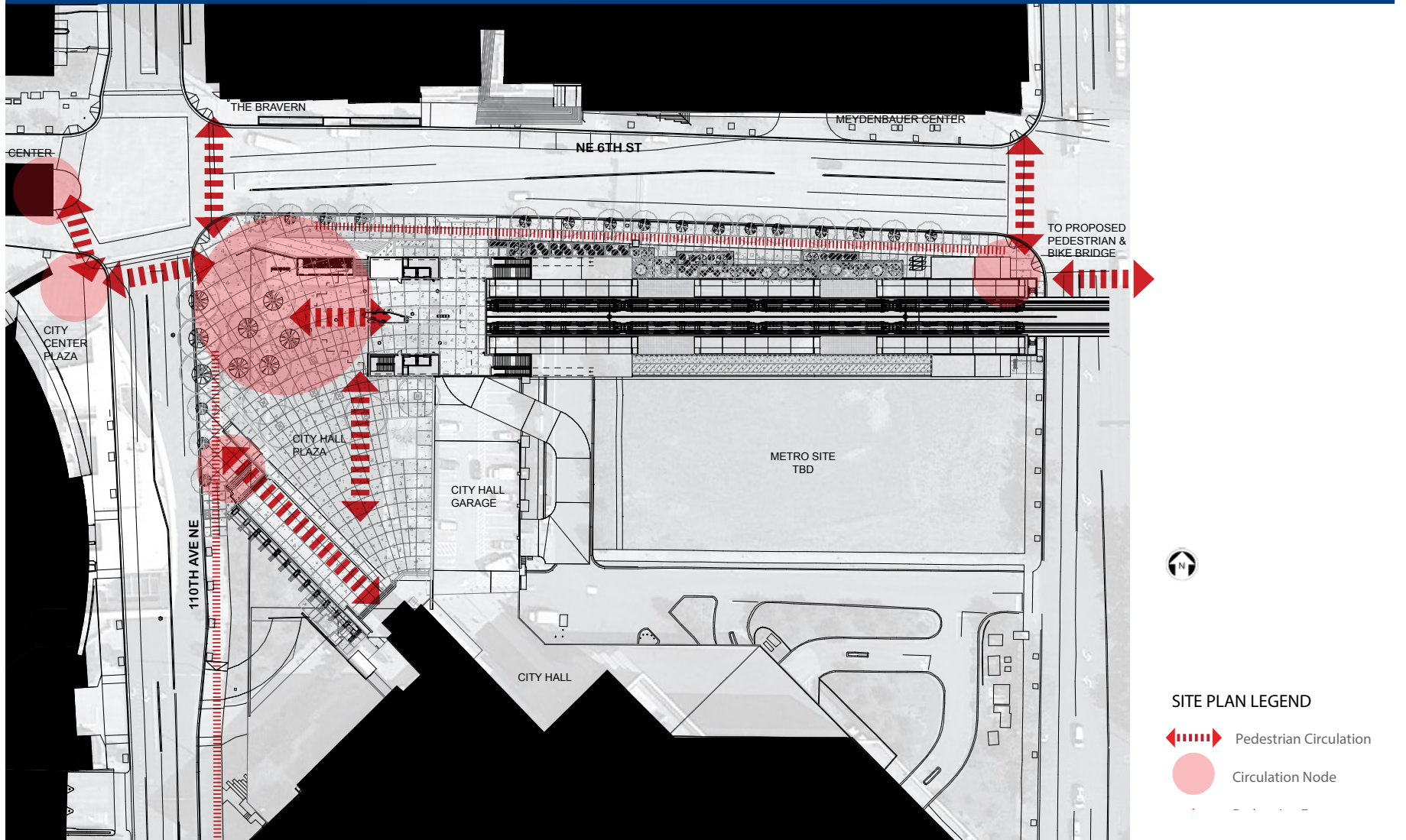
Neighborhood context plan

### Site location



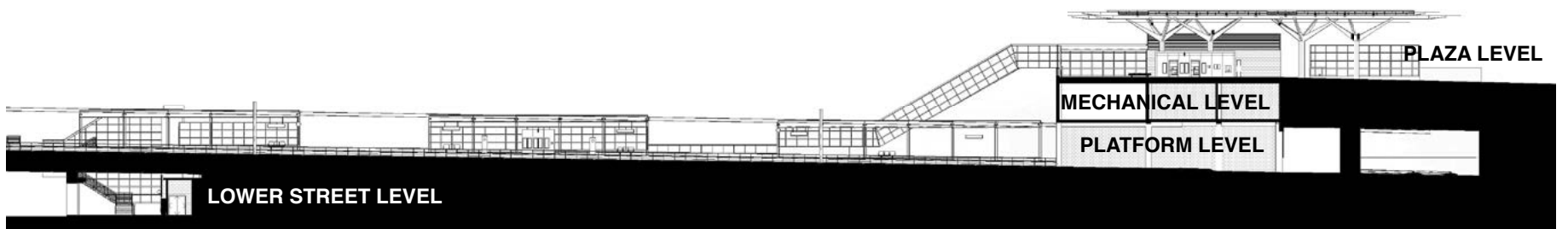
# BELLEVUE TRANSIT CENTER STATION

## EAST LINK EXTENSION



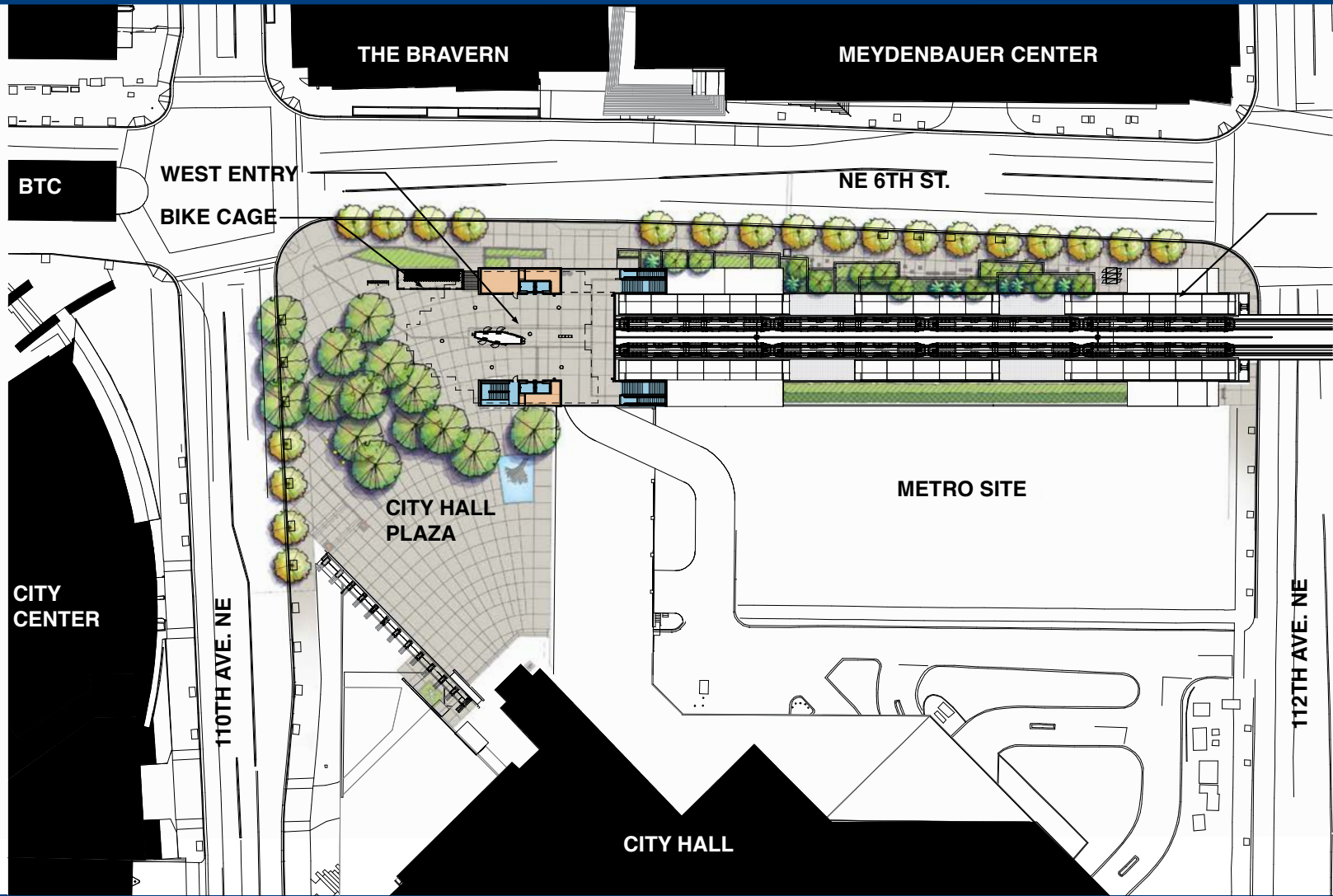
Station area connections plan

Longitudinal section looking south



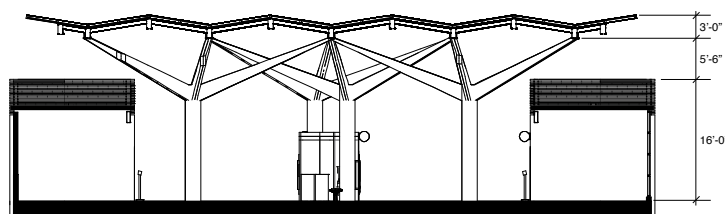
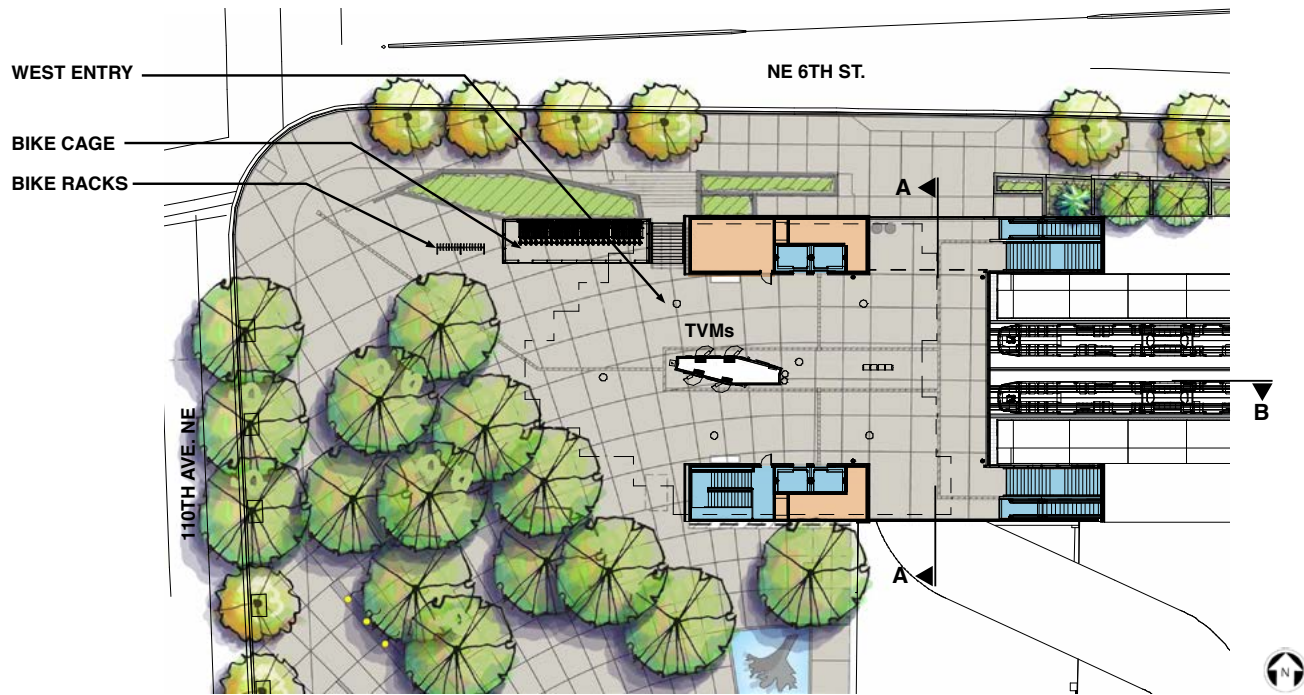
# BELLEVUE TRANSIT CENTER STATION

EAST LINK EXTENSION



Station site plan

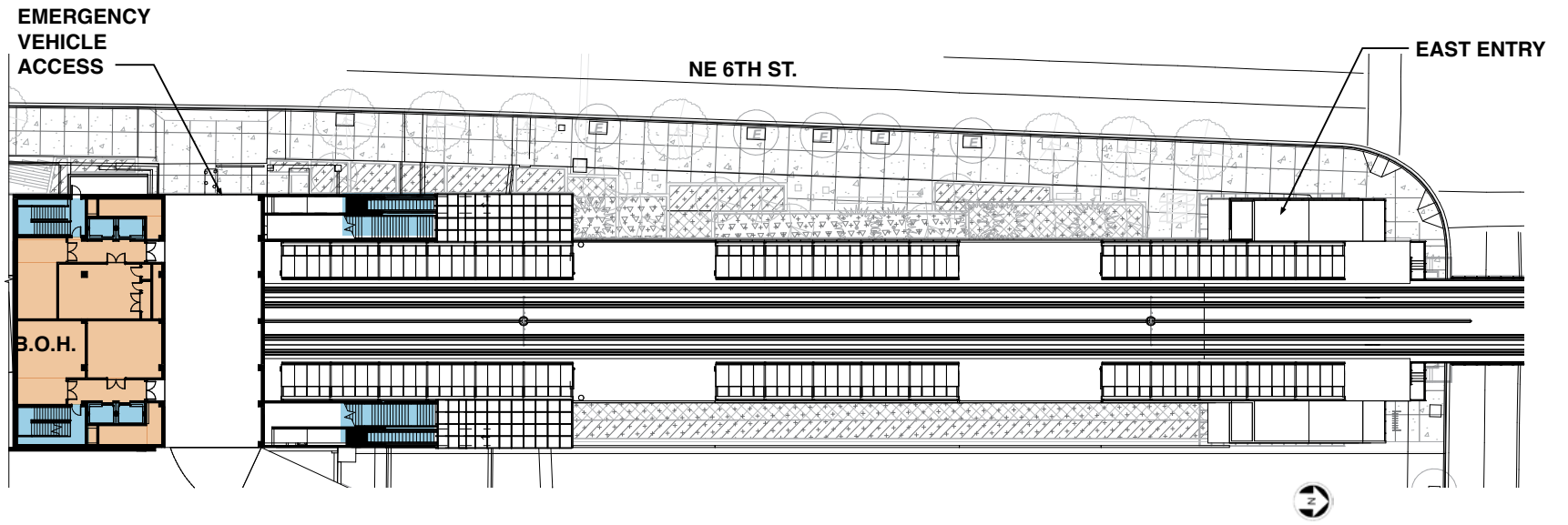
West entry plan



WEST PLAZA

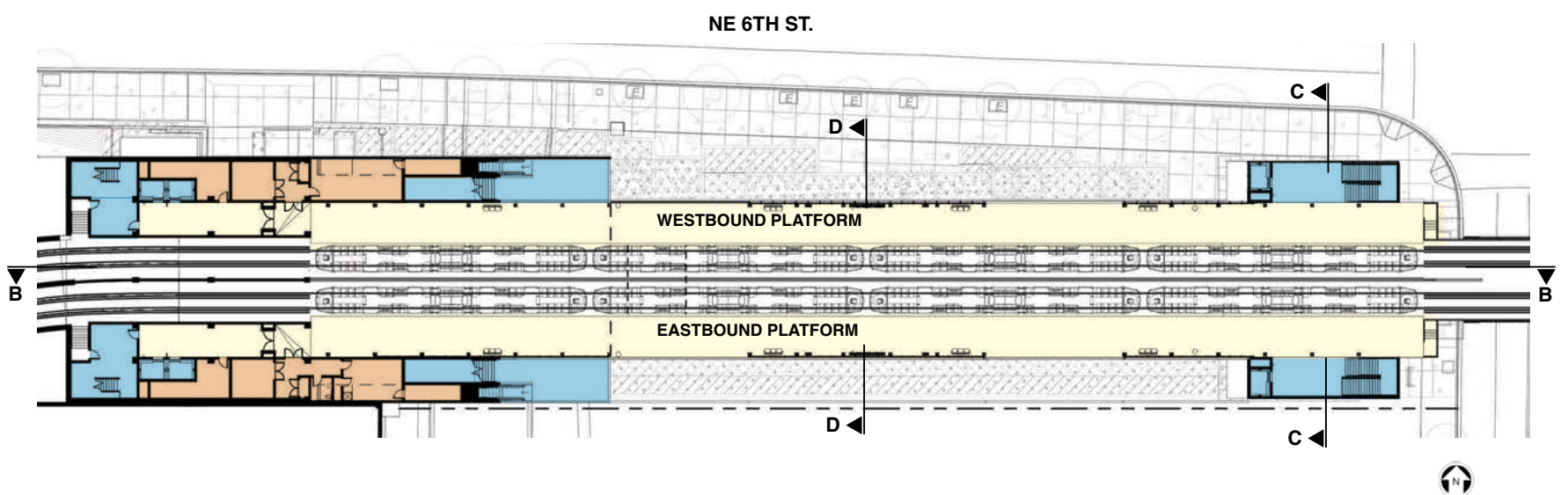
# BELLEVUE TRANSIT CENTER STATION

EAST LINK EXTENSION



*Mezzanine level plan*

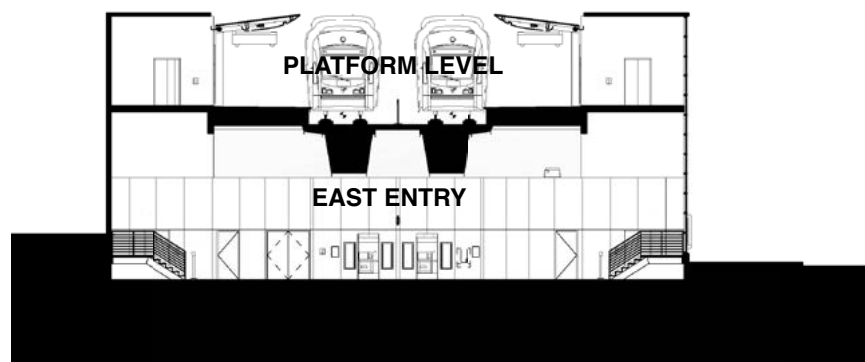
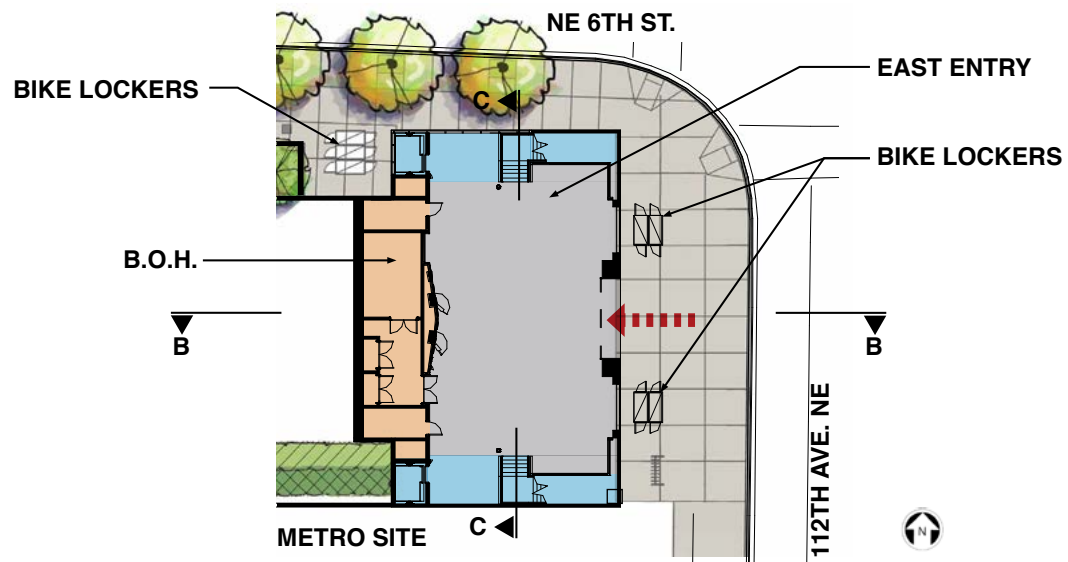
*Platform level plan*



MAY 2013

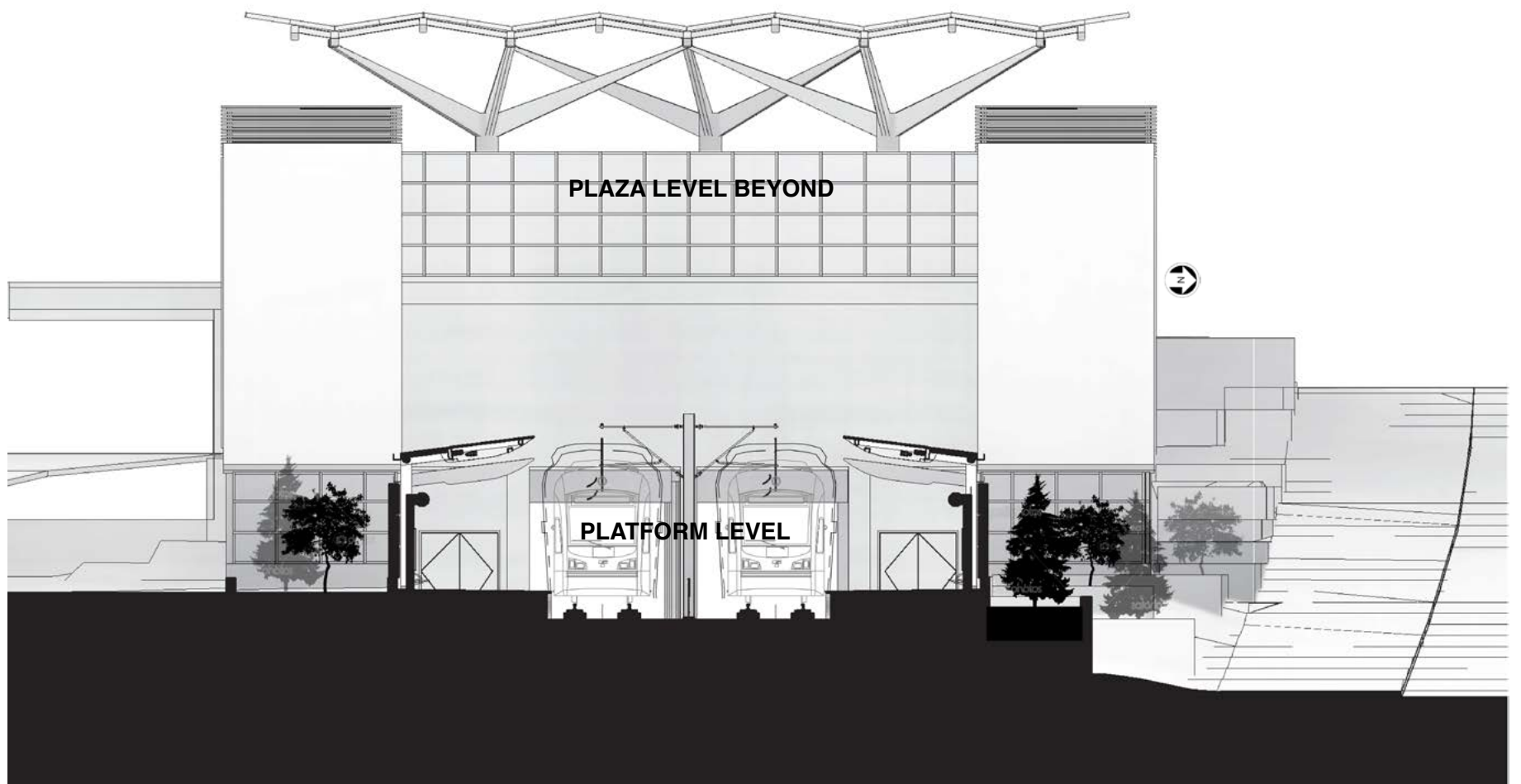
# BELLEVUE TRANSIT CENTER STATION

## EAST LINK EXTENSION



*East entry plan and cross section*

*Cross section looking west*



# BELLEVUE TRANSIT CENTER STATION

EAST LINK EXTENSION



East entrance at 112th Ave NE & NE 6th St.

Platform view looking west



MAY 2013

# BELLEVUE TRANSIT CENTER STATION

EAST LINK EXTENSION



*West entrance at 110th Ave. NE & NE 6th St.*

*Aerial view looking southeast from Bellevue Transit Center*



MAY 2013