

**East Link Extension  
Seattle 60% Design Open House**

July 31, 2014

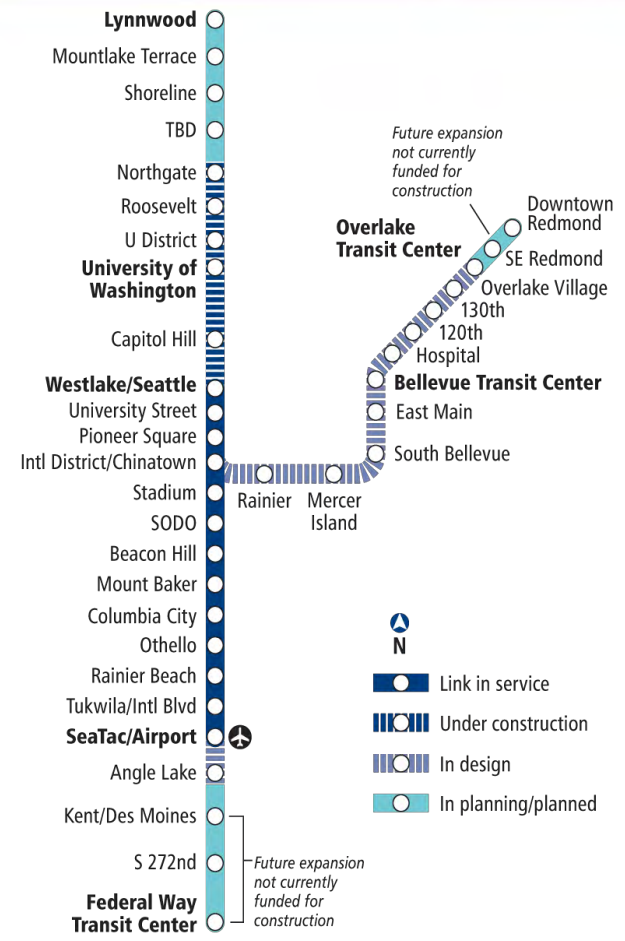
# Tonight's agenda

- **5-7 p.m. – Open house**
  - Meet the team
  - View design plans
  - Tell us what you think
- **5:30 – Presentation**
  - Welcome and introductions (Blake Jones)
  - East Link overview (Tia Raamot)
  - Station design update (David Hewitt)
  - STart (Barbara Luecke)
  - Question and answer
  - Animation
- **6:00 – Return to open house**
- **7:00 - Close**



# Link light rail system

- 16 miles of light rail with 13 stations currently in service
- University Link and S. 200<sup>th</sup> extensions under construction; opens 2016
- Northgate Link Extension under construction; opens 2021
- ST2 Plan funded extensions to Overlake, South King County, and Lynnwood
- 50+ mile system



# East Link overview

**Length:** 14 miles

**Ride times:**

- Mercer Island to UW: 20 min.
- S. Bellevue to Airport: 50 min.
- Overlake Transit Center to Bellevue Transit Center: 10 min.

**Rider projection:** 50,000 daily by 2030

**Budget:** \$2.8 billion (2010 \$)

**Start of Service:** Targeted 2023



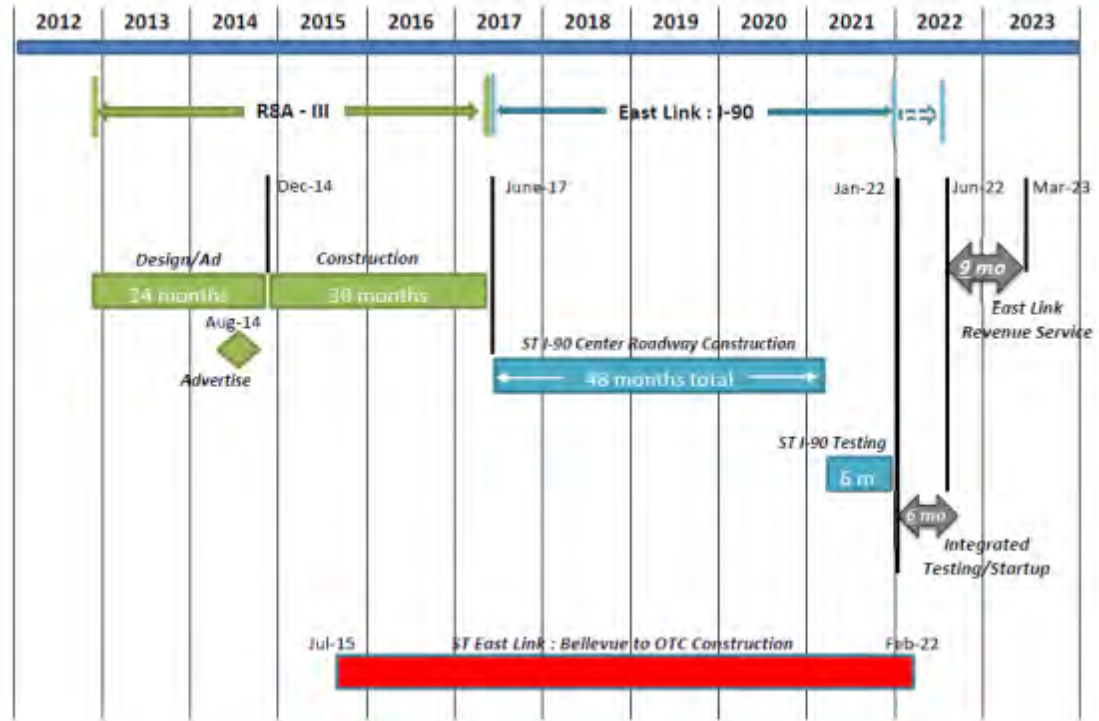
# East Link timeline & recent progress





# I-90: Construction

- Sound Transit is working with WSDOT to provide full-time HOV lanes in the outer roadways, in preparation for light rail in the center roadway
- Construction on I-90 center roadway begins in 2017
- Bus route revisions - 2019



# What we've heard



## Key Themes:

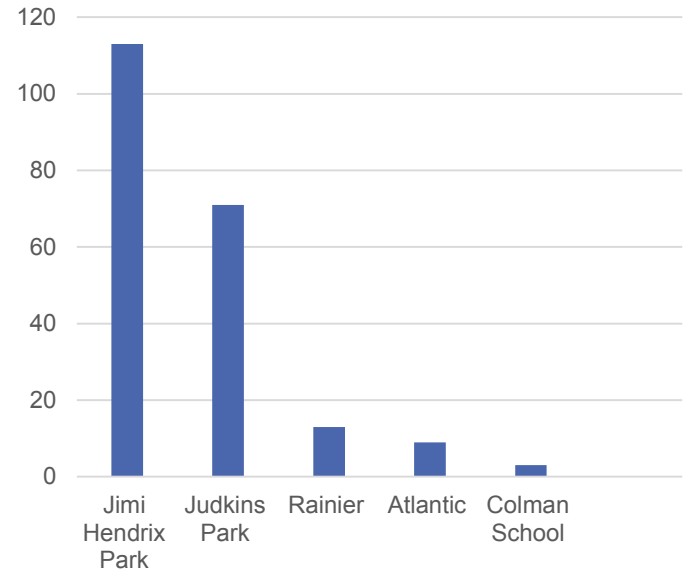
- Station design
- Bike and pedestrian access
- Safety and security
- Station name

## Public Involvement - 2013:

- 30% design open house
- Project briefings
- Umojafest

# Permanent station names

- Reflect the nature of the community and environment
- Succinct and easy to read
- Comply with federal Americans with Disabilities Act guidelines and limited to 30 characters
- Avoid commercial references
- Avoid similar names or words in existing facilities



Comment on station  
names tonight



# Supporting structures



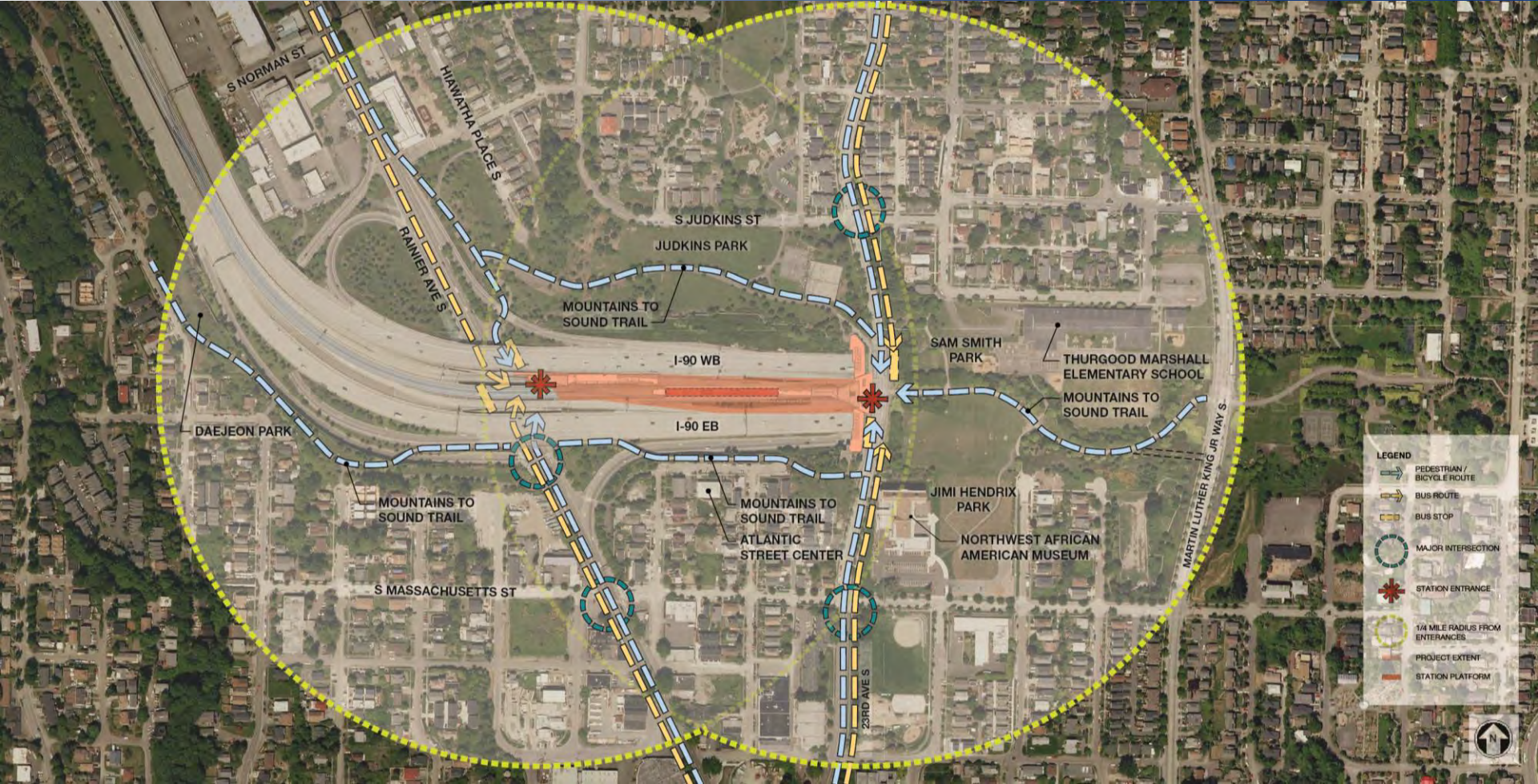
A blue-tinted photograph of a Sound Transit bus. The bus is viewed from a front-quarter perspective, showing the windshield with 'SOUND TRANSIT' written on it, the driver's seat, and the front grille. The bus is parked on a street. The overall image has a monochromatic blue color scheme.

# STATION DESIGN OVERVIEW

Rainier Station



# CONTEXTUAL PLAN



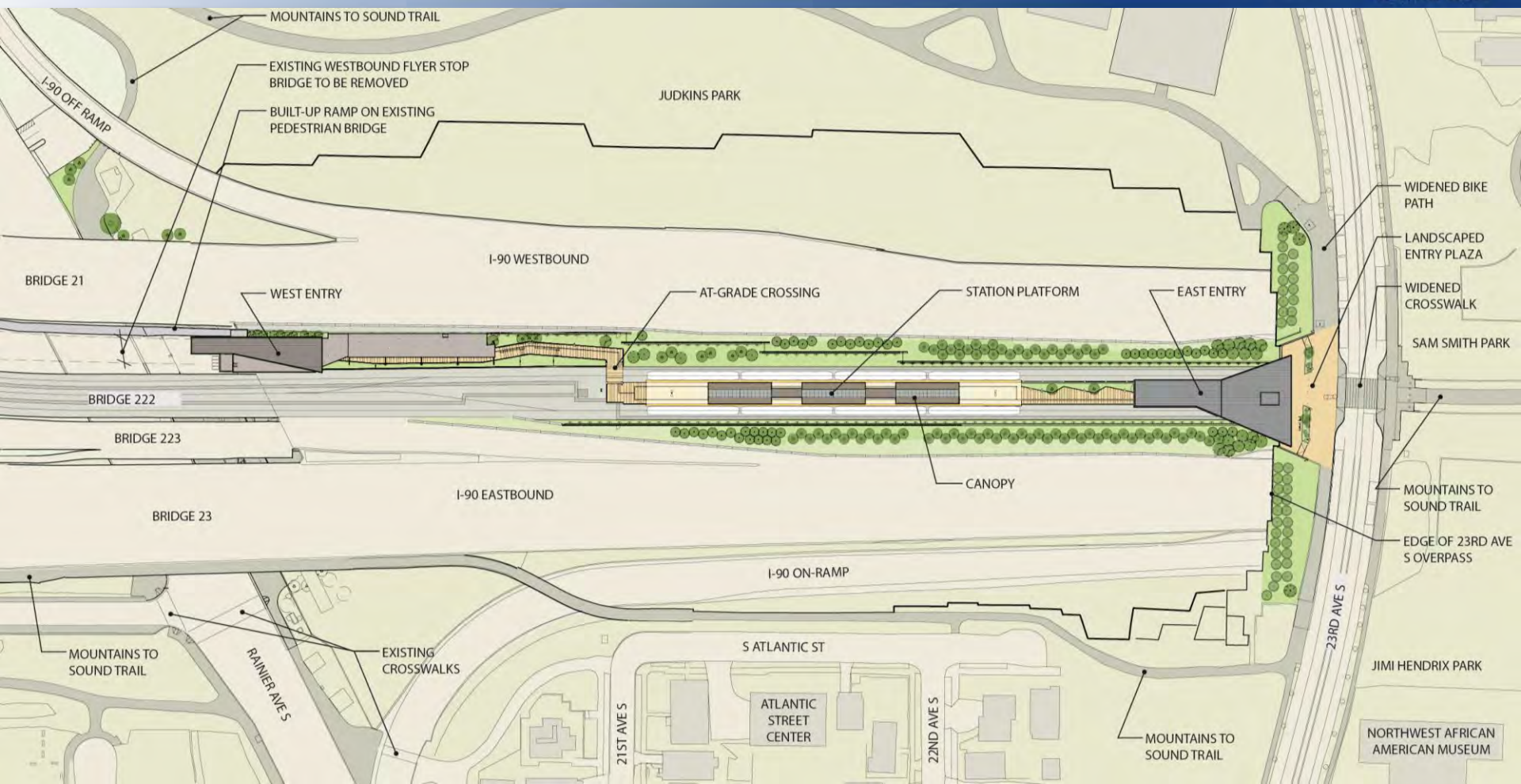
**LEGEND**

- PEDESTRIAN / BICYCLE ROUTE
- BUS ROUTE
- BUS STOP
- MAJOR INTERSECTION
- STATION ENTRANCE
- 1/4 MILE RADIUS FROM ENTRANCES
- PROJECT EXTENT
- STATION PLATFORM

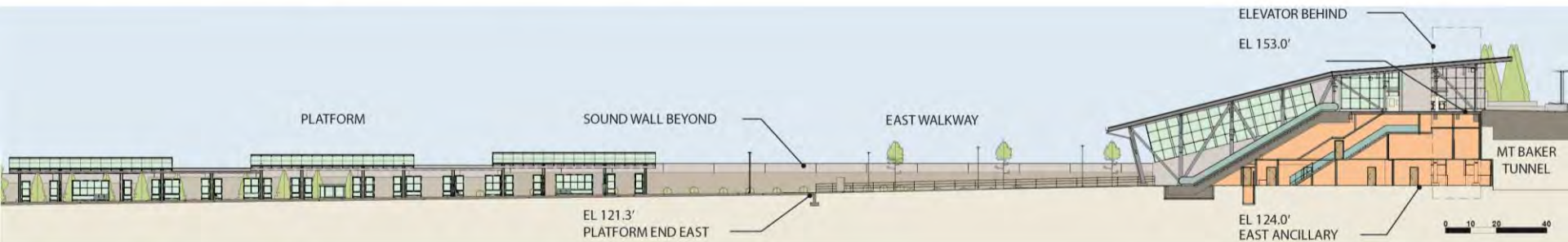
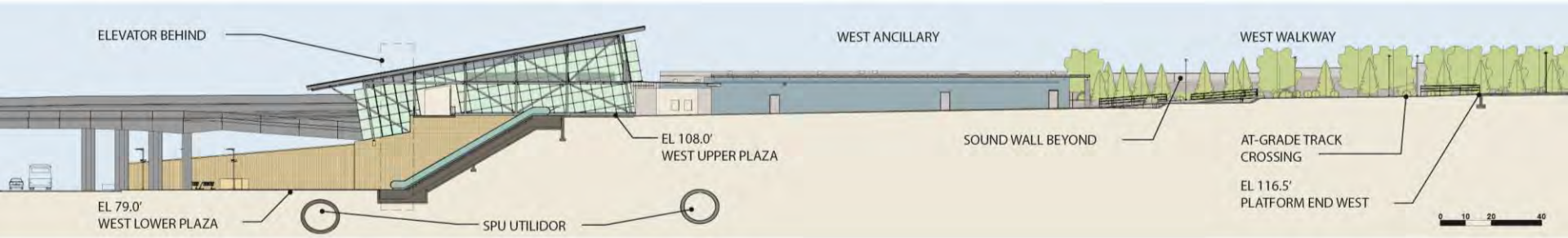




# SITE PLAN



# LONGITUDINAL SITE SECTIONS



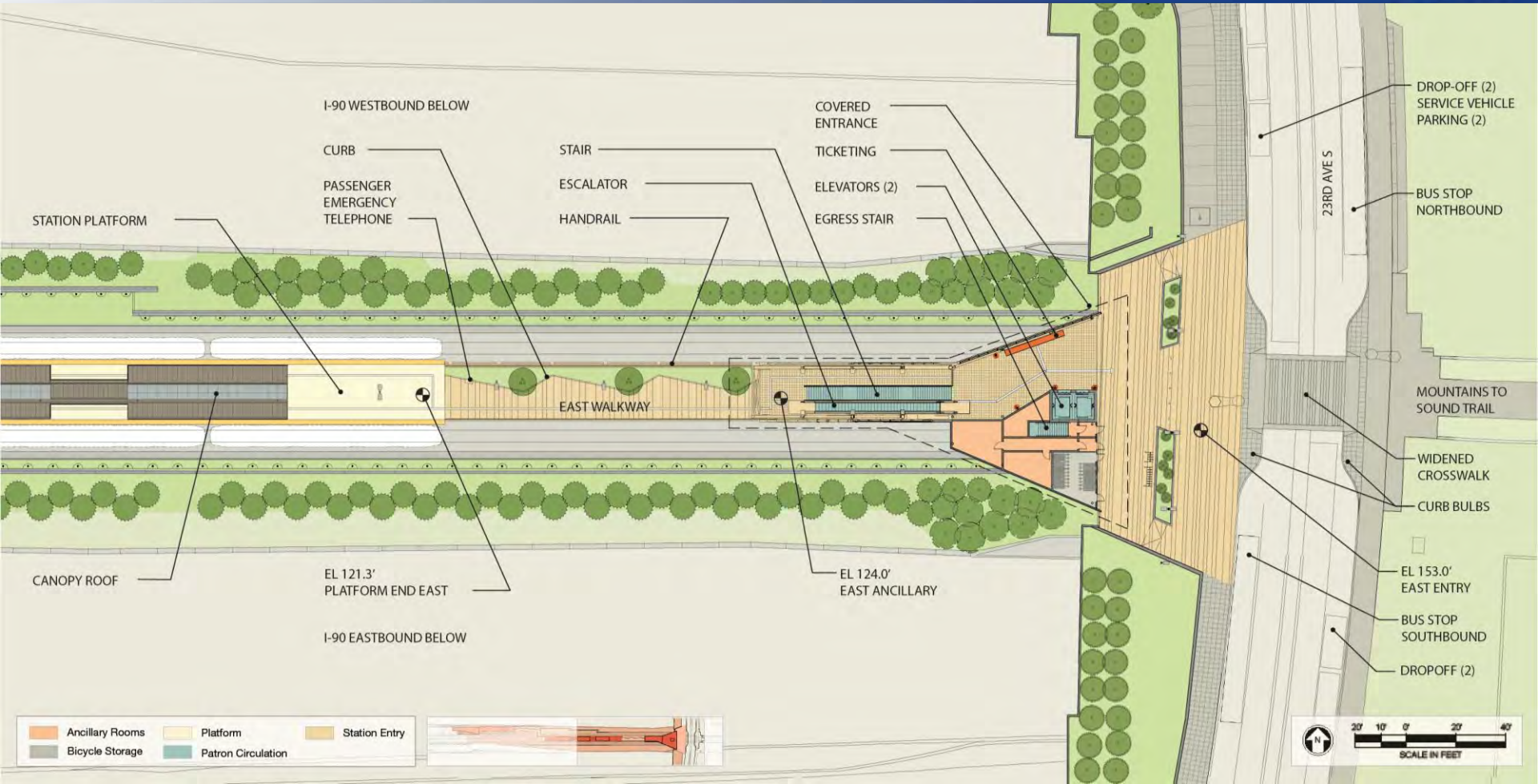


# EAST ENTRY AT 23<sup>RD</sup> AVENUE SOUTH





# EAST ENTRY – UPPER PLAZA PLAN



I-90 WESTBOUND BELOW

CURB

PASSENGER EMERGENCY TELEPHONE

STATION PLATFORM

EL 121.3' PLATFORM END EAST

I-90 EASTBOUND BELOW

STAIR

ESCALATOR

HANDRAIL

EAST WALKWAY

EL 124.0' EAST ANCILLARY

COVERED ENTRANCE

TICKETING

ELEVATORS (2)

EGRESS STAIR

DROP-OFF (2) SERVICE VEHICLE PARKING (2)

23RD AVE S

BUS STOP NORTHBOUND

MOUNTAINS TO SOUND TRAIL

WIDENED CROSSWALK

CURB BULBS

EL 153.0' EAST ENTRY

BUS STOP SOUTHBOUND

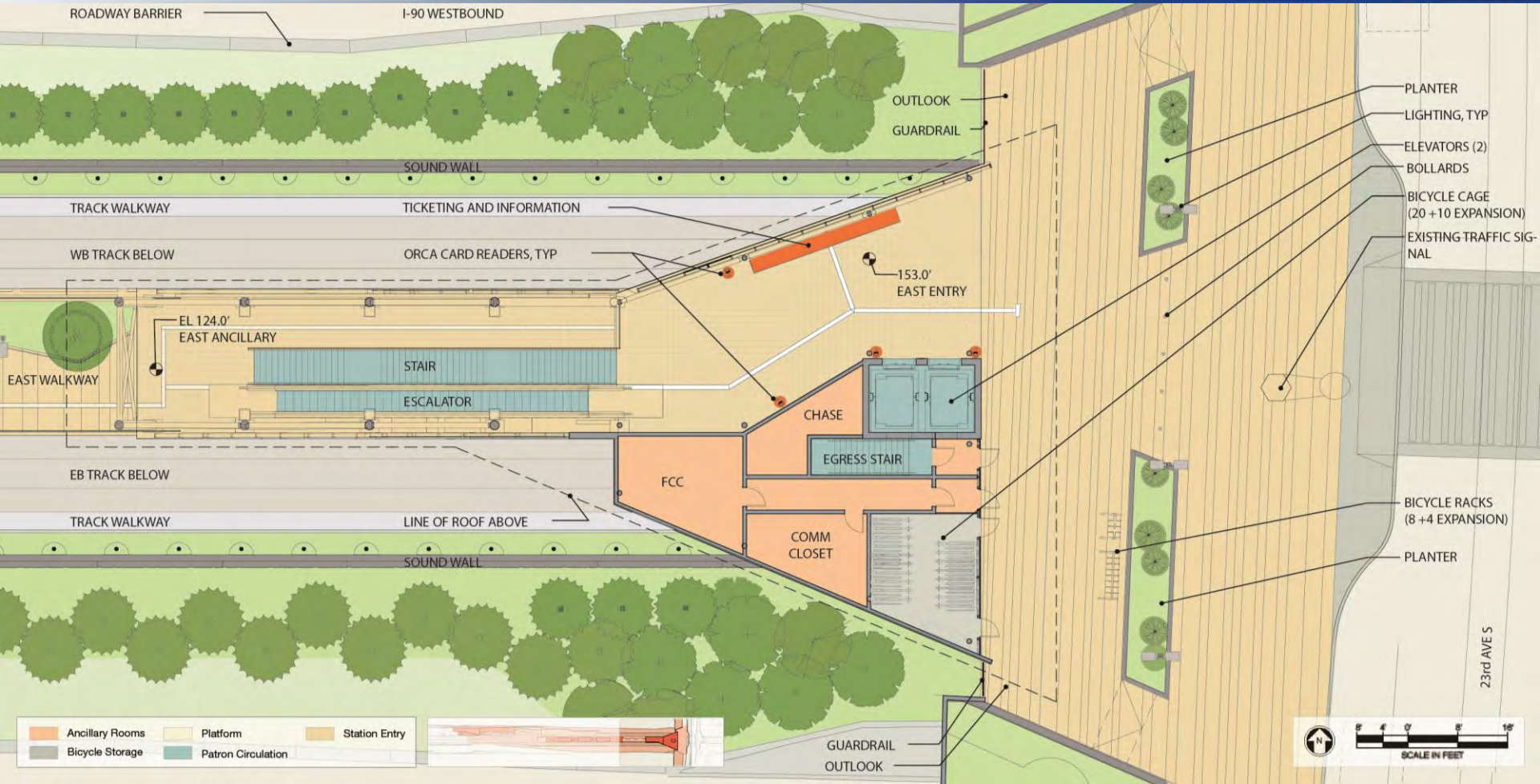
DROPOFF (2)

	Ancillary Rooms		Platform		Station Entry
	Bicycle Storage		Patron Circulation		



SCALE IN FEET

# EAST ENTRY- UPPER PLAZA PLAN



ROADWAY BARRIER

I-90 WESTBOUND

OUTLOOK

GUARDRAIL

SOUND WALL

TRACK WALKWAY

TICKETING AND INFORMATION

WB TRACK BELOW

ORCA CARD READERS, TYP

153.0'  
EAST ENTRY

EL 124.0'  
EAST ANCILLARY

STAIR

ESCALATOR

CHASE

EGRESS STAIR

EB TRACK BELOW

FCC

TRACK WALKWAY

LINE OF ROOF ABOVE

COMM CLOSET

SOUND WALL

PLANTER

LIGHTING, TYP

ELEVATORS (2)

BOLLARDS

BICYCLE CAGE  
(20 + 10 EXPANSION)

EXISTING TRAFFIC SIGNAL

BICYCLE RACKS  
(8 + 4 EXPANSION)

PLANTER

23rd AVE S

Ancillary Rooms	Platform	Station Entry
Bicycle Storage	Patron Circulation	

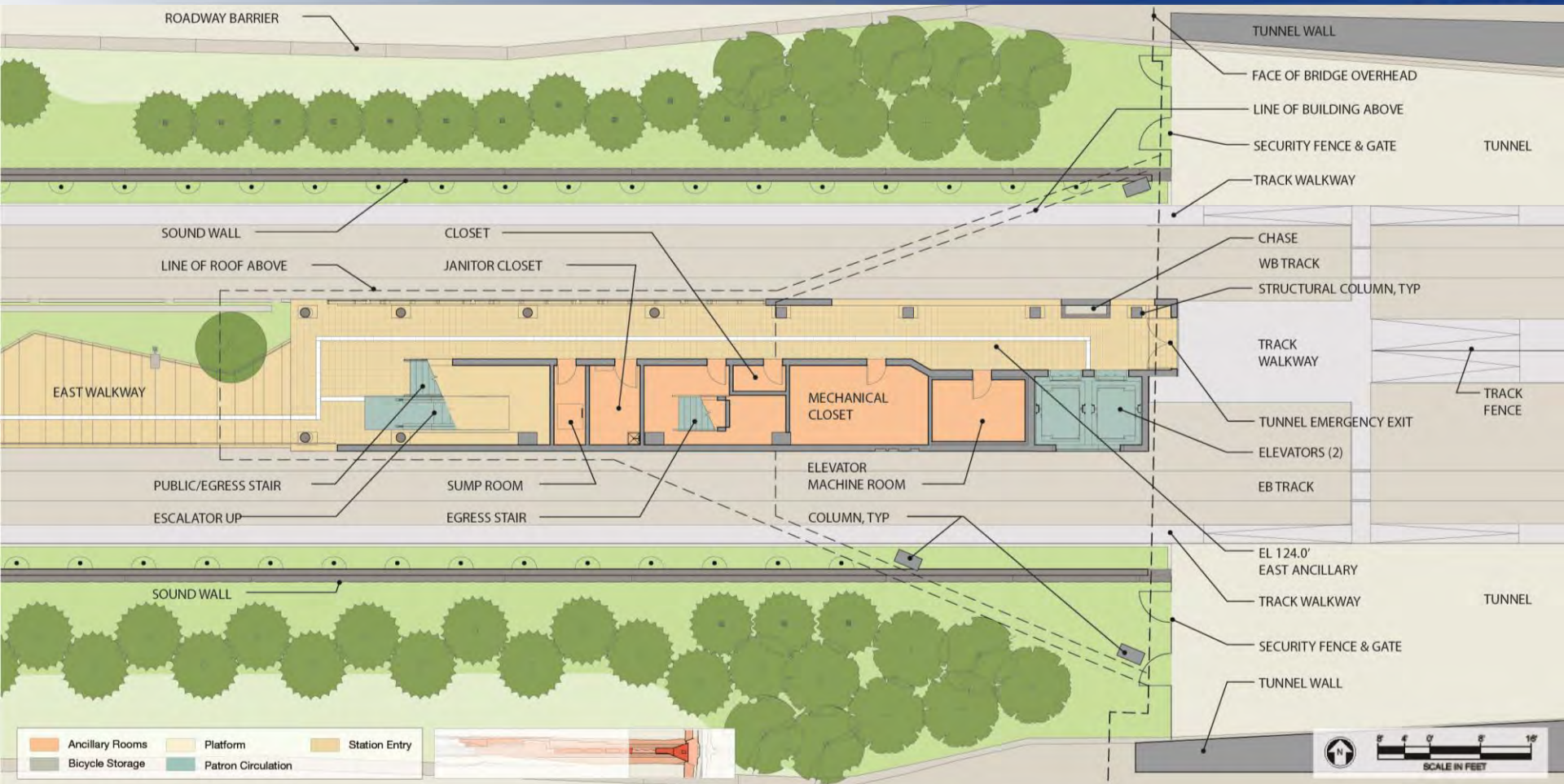


GUARDRAIL  
OUTLOOK

SCALE IN FEET



# EAST ENTRY – LOWER LEVEL PLAN

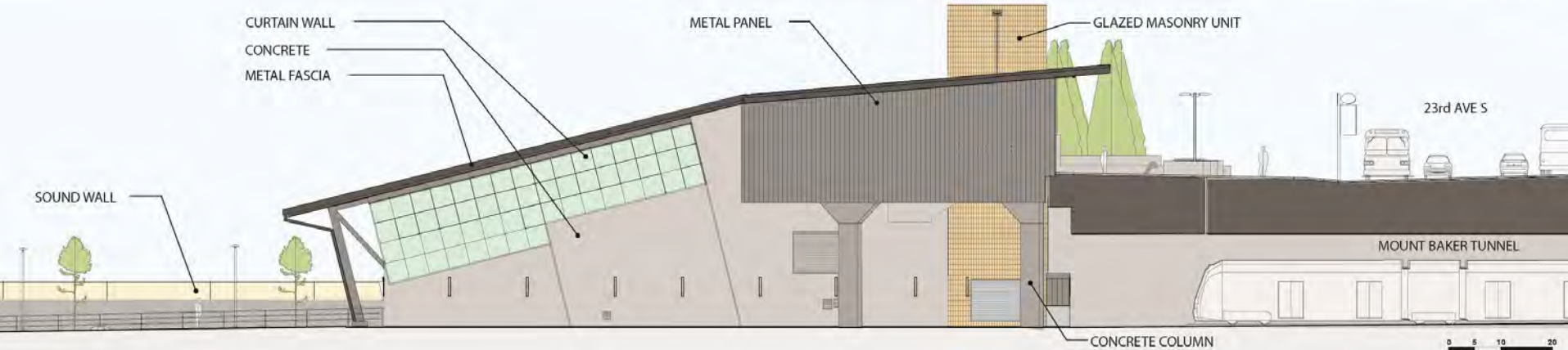
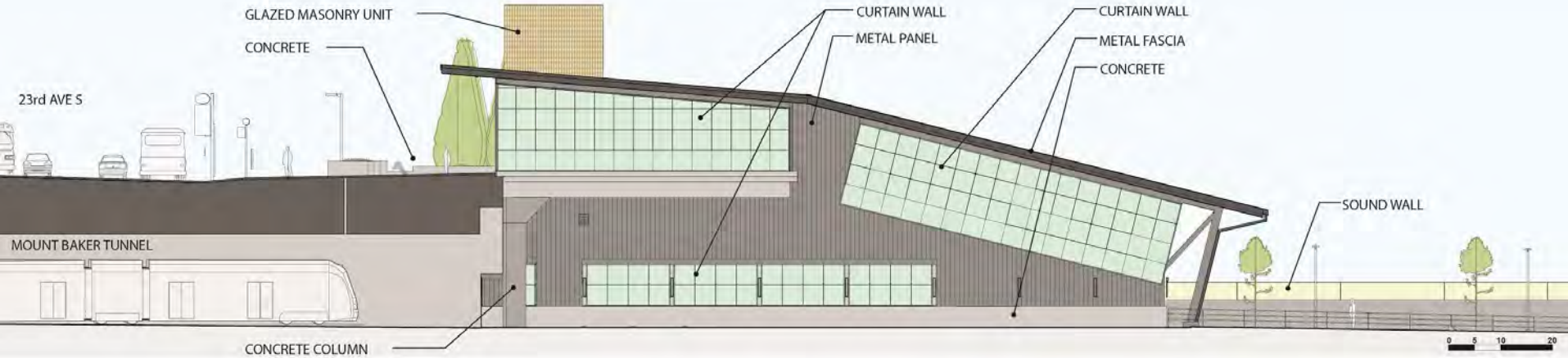


- Ancillary Rooms
- Platform
- Station Entry
- Bicycle Storage
- Patron Circulation



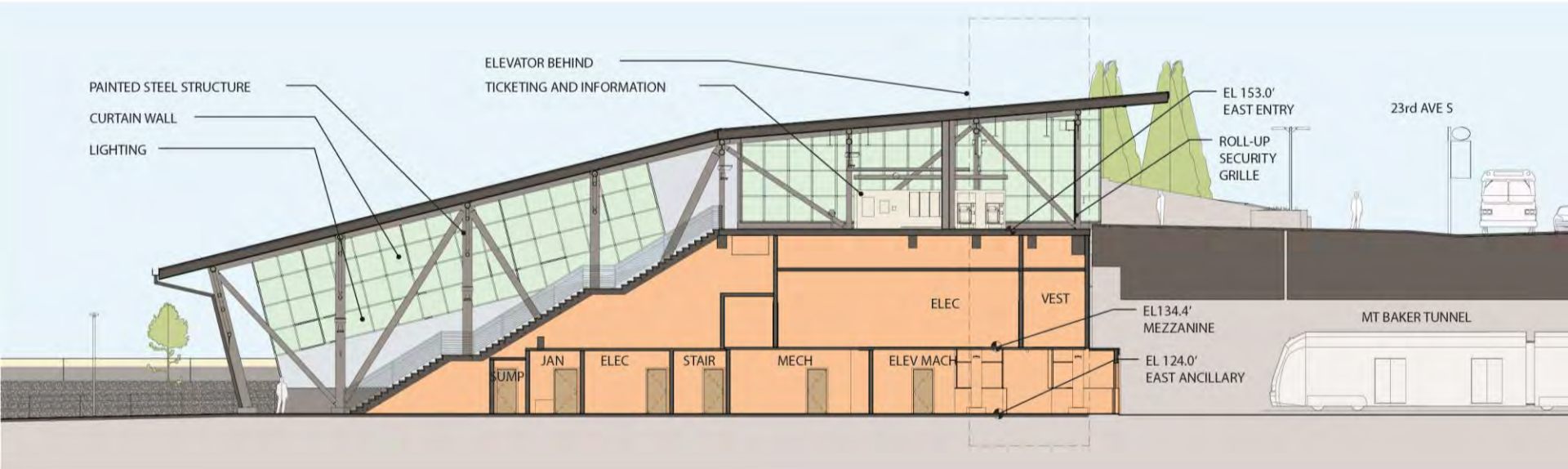
SCALE IN FEET

# EAST ENTRY - BUILDING ELEVATIONS





# EAST ENTRY - BUILDING SECTION



# PLATFORM LOOKING TOWARD EAST ENTRY

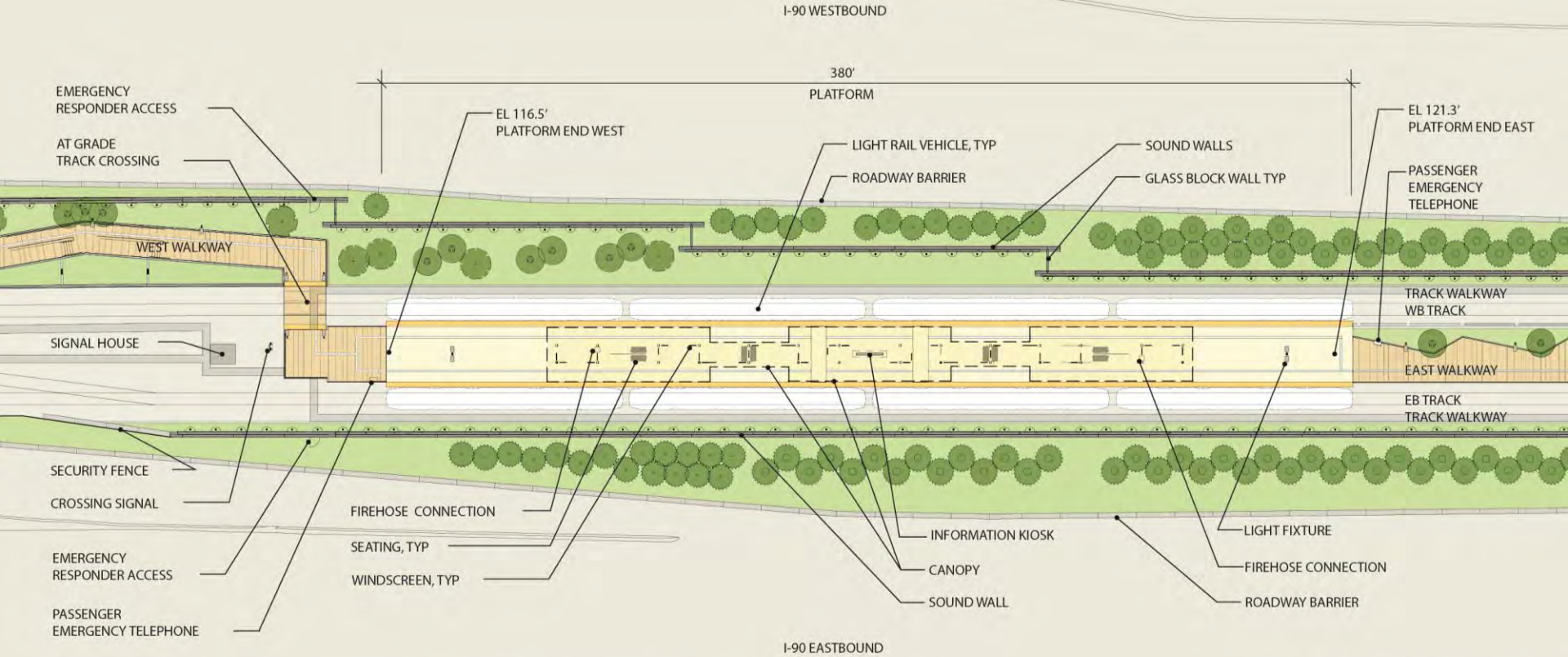




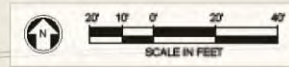
# PLATFORM CANOPY LOOKING WEST



# PLATFORM - PLAN



 Ancillary Rooms	 Platform	 Station Entry
 Bicycle Storage	 Patron Circulation	

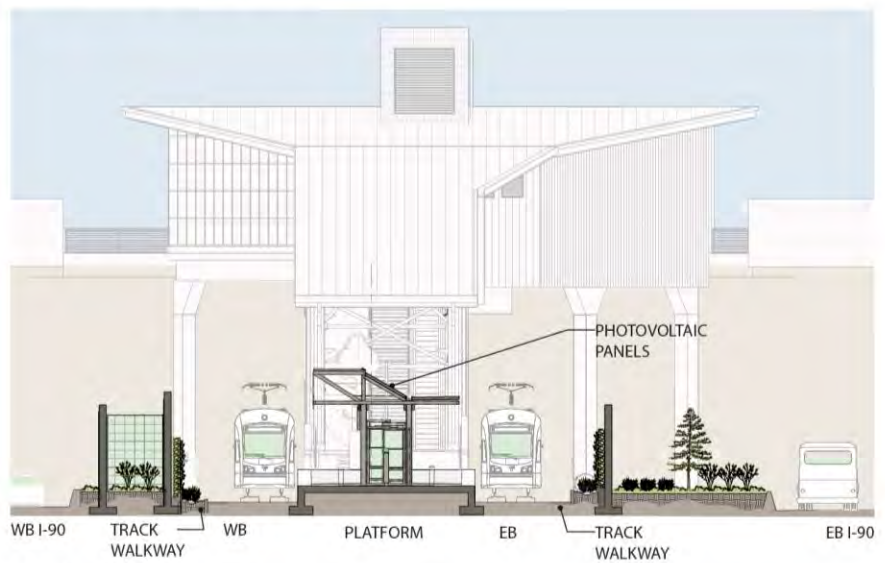
SCALE IN FEET



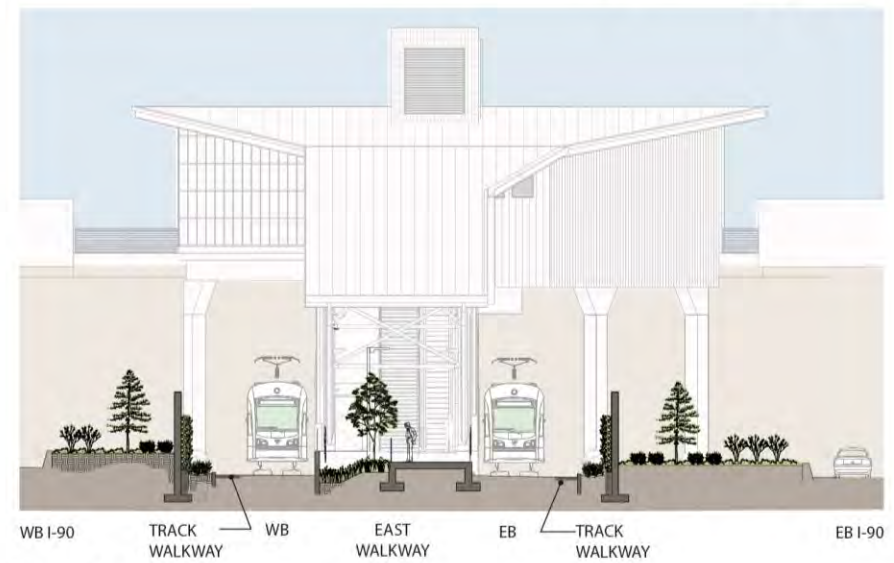
# CROSS SECTIONS



Key Longitudinal Site Section



Section C



Section D





# WEST WALKWAY LOOKING TOWARD WEST ENTRY

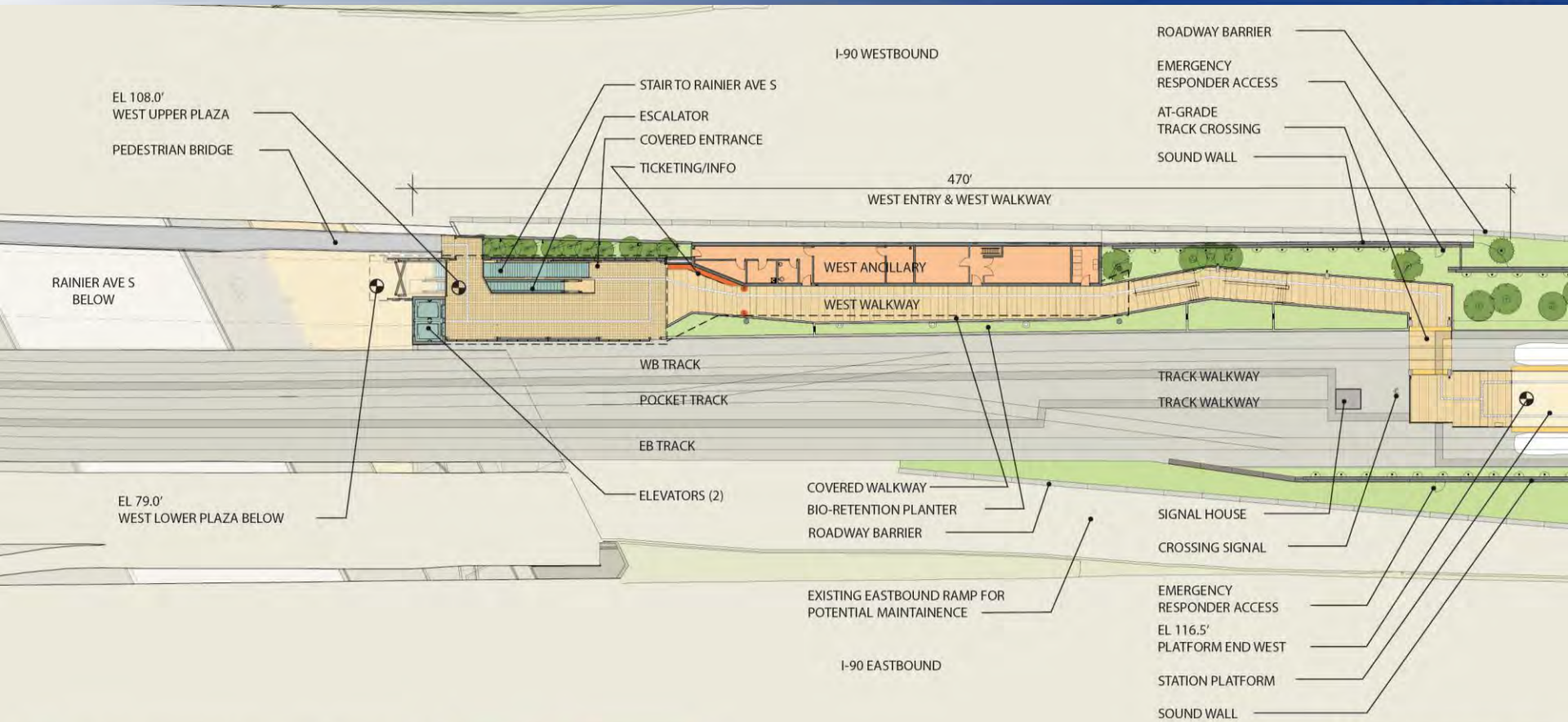




# WEST ENTRY WALKWAY LOOKING WEST



# WEST ENTRY – UPPER PLAZA PLAN



Ancillary Rooms	Platform	Station Entry
Bicycle Storage	Patron Circulation	



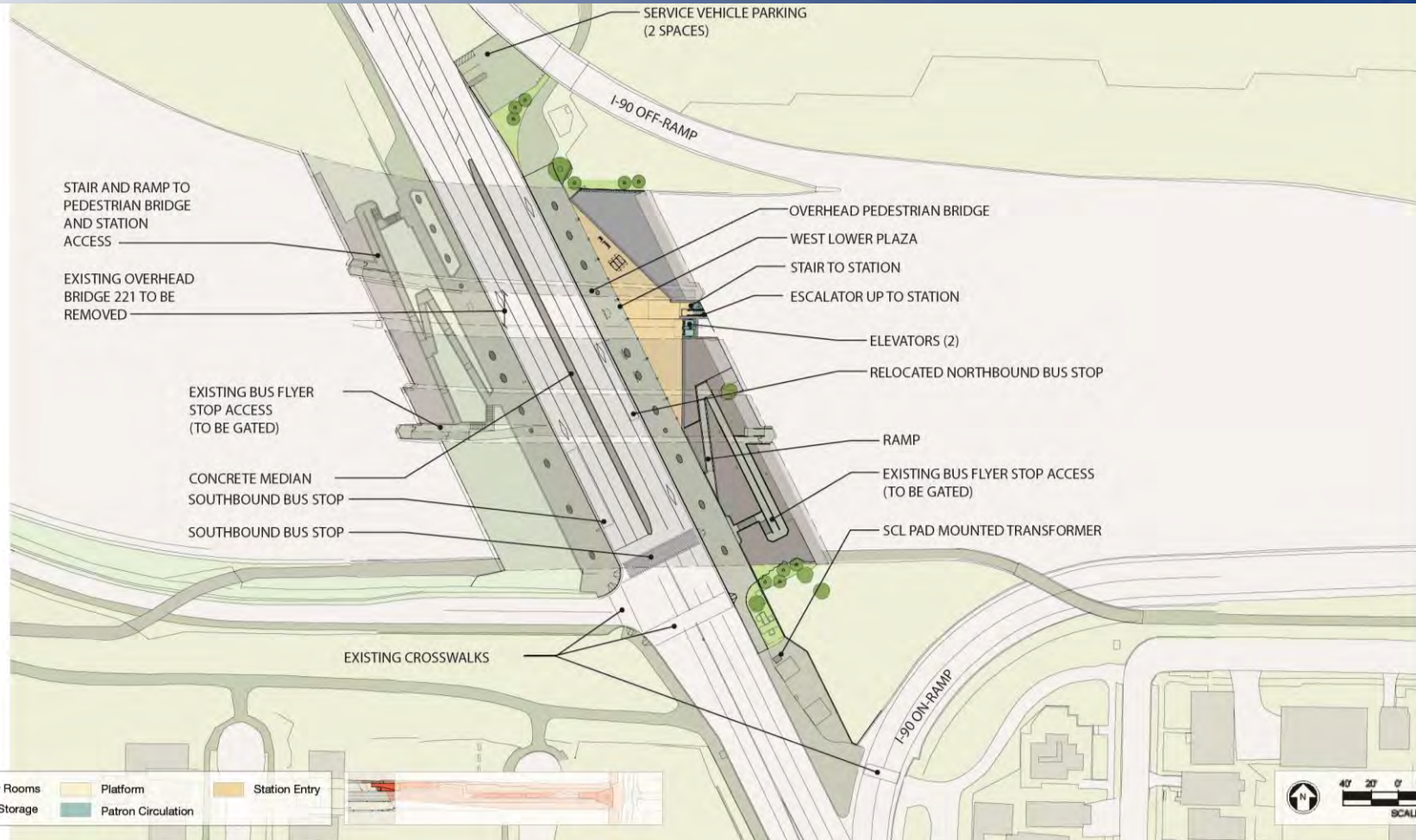
SCALE IN FEET



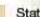




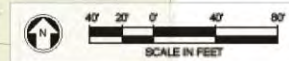
# WEST ENTRY – LOWER PLAZA PLAN



# WEST ENTRY – LOWER LEVEL PLAN



	Ancillary Rooms		Platform		Station Entry
	Bicycle Storage		Patron Circulation		

40' 20' 0' 40' 80'  
SCALE IN FEET



# CROSS SECTIONS



Key Longitudinal Site Section



WB I-90 PEDESTRIAN BRIDGE WEST ENTRY BRIDGE 222

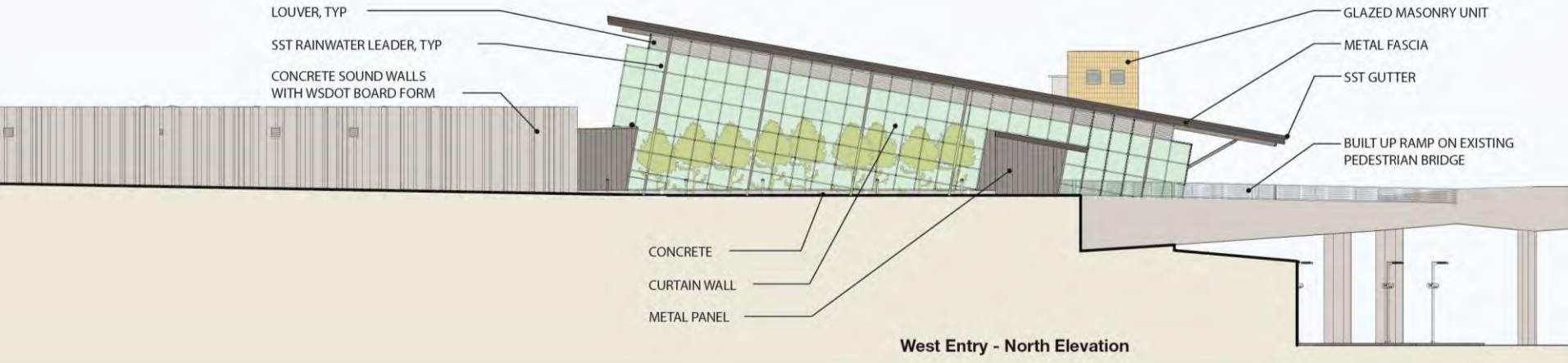
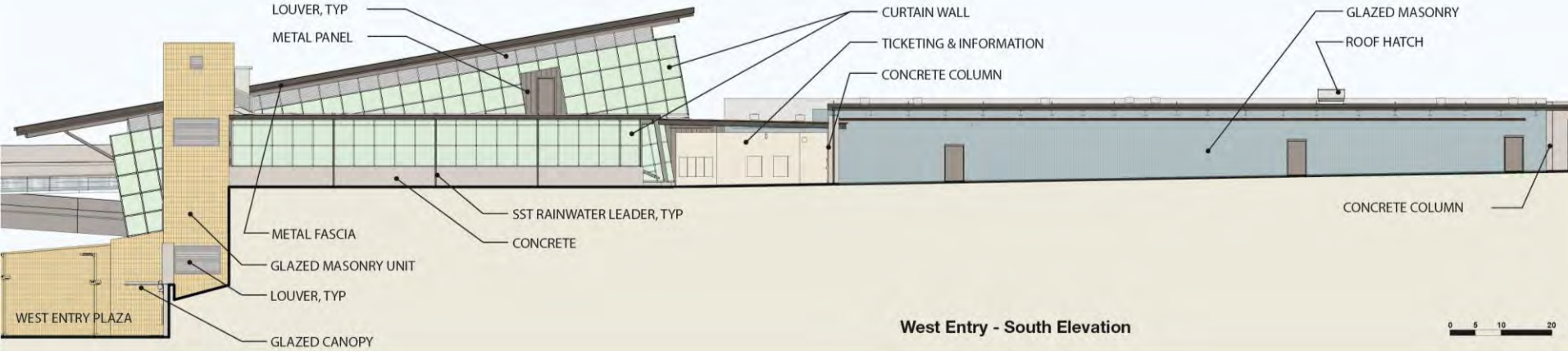
Section A



WB I-90 WEST ANCILLARY WEST WALKWAY WB EB

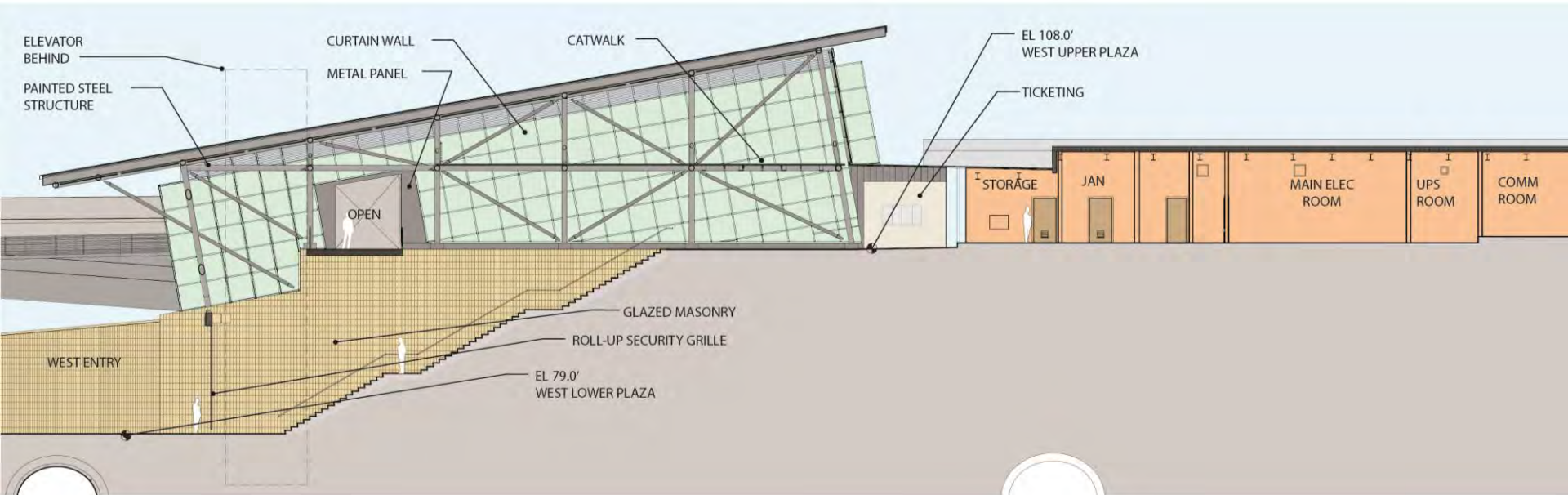
Section B

# WEST ENTRY – BUILDING ELEVATIONS





# WEST ENTRY – BUILDING SECTION



# WEST ENTRY AT RAINIER AVENUE SOUTH





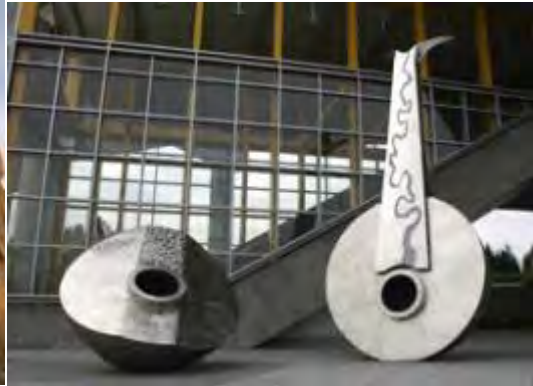
# ***ST* art**

Sound Transit's Integrated Art Program



# STart on LINK

Sound Transit Art Program





# Next steps

- Continue coordination with local jurisdictions and the public
- Select a permanent station name
- Select station artists
- Advance design to 90% milestone

## Join us!

- August 1 & 2: Umojafest
- August 5: Judkins Street Cafe, 5:30 p.m. – 7:30 p.m.
- August 7: Hiawatha Lofts, 2:00 p.m. – 4:00 p.m.

# We want to hear from you!

- Sound Transit Community Outreach staff is accessible by phone, email, and is available to meet in person
- Contact Community Outreach staff: [eastlink@soundtransit.org](mailto:eastlink@soundtransit.org) or 206-398-LINK
- Attend final design community meetings
- Sign-up to receive email updates: [www.soundtransit.org/subscribe](http://www.soundtransit.org/subscribe)
- Visit the project website: [www.soundtransit.org/eastlink](http://www.soundtransit.org/eastlink)



# Questions?

