

The image shows a light rail train in motion, blurred to convey speed. The train is white with a teal and blue wave-like stripe along its side. In the foreground, the front of another train is visible, featuring a large blue and white headlight assembly and a teal stripe. The background shows a station platform with a building and a clear sky.

East Link Extension South Bellevue Completion of Design Open House

November 6, 2014

Tonight's agenda

- **5-7 p.m. – Open house**
 - Meet the team
 - View design plans
- **5:30 – Presentation**
 - Welcome and introductions (Luke Lamon)
 - City of Bellevue introduction (Kate March)
 - East Link overview (Paul Cornish)
 - Station design (John Walser)
 - STart (Barbara Luecke)
 - Questions and comments
- **6:00 – Return to open house**
- **7:00 - Close**





City of Bellevue

Light Rail Permitting Citizen's Advisory Committee Purview:

- Station design
- Park & rides
- Landscaping
- Accessory structures
- Noise walls
- Tunnel portals
- Public art



City of Bellevue

City's Role During East Link Construction

1) Permitting & Inspection

- Requires Sound Transit and other utility companies to meet our city codes

2) Maintenance of Traffic

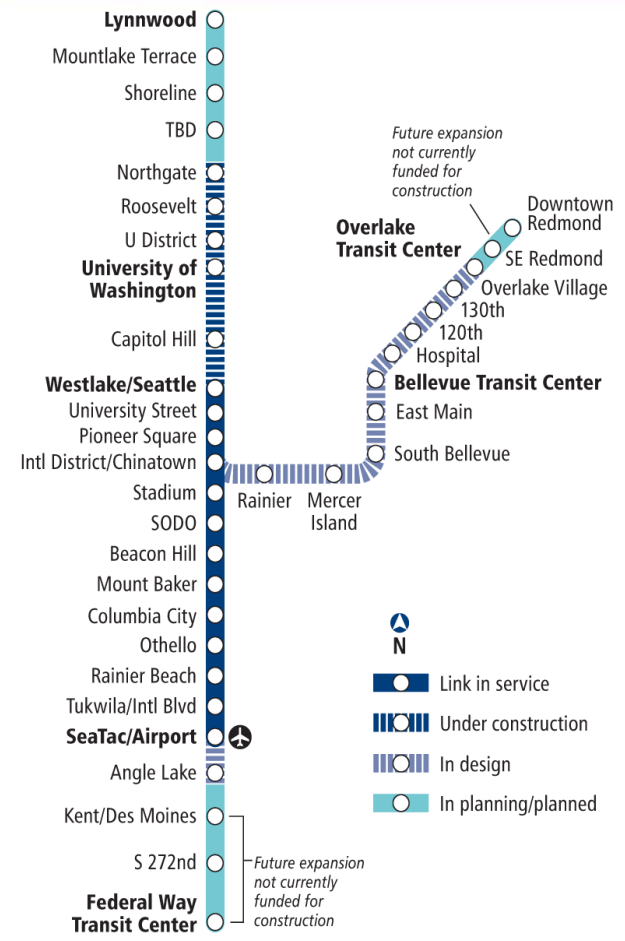
- Works with Sound Transit to develop a plan to keep vehicles moving

3) General Coordination

- Partners with Sound Transit and utility companies to facilitate a smooth construction process

Link light rail system

- 16 miles of light rail with 13 stations currently in service
- University Link & South 200th Link under construction; open 2016
- ST2 Plan funded extensions to Overlake, South King County, and Lynnwood
- 50+ mile system



East Link overview

Length: 14 miles

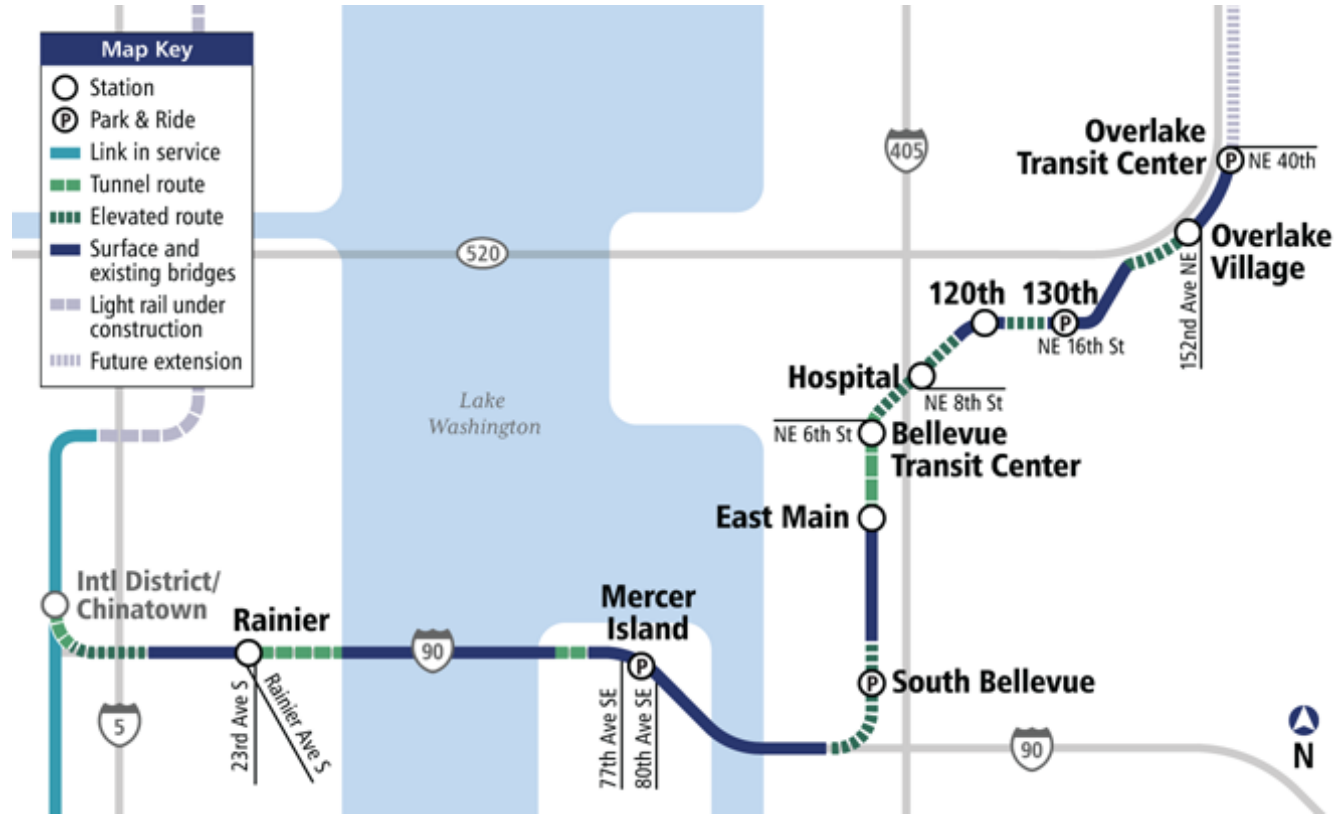
Ride times:

- Mercer Island to UW: 20 min.
- S. Bellevue to Intl. District: 14 min.
- Overlake Transit Center to Bellevue Transit Center: 10 min.

Rider projection: 50,000 daily by 2030

Budget: \$2.8 billion (2010 \$)

Start of Service: Targeted 2023



East Link timeline & recent progress

2006-2011

Planning and
environmental
review

2011-2015

Final design
(we are here)

- ✓ Completion of design
- ✓ Early construction planning underway
- ✓ South Bellevue Design & Mitigation Permit submitted

2015-2022

Construction

Targeted 2022

Testing &
pre-operations

Targeted 2023

East Link
in service

South Bellevue Segment overview

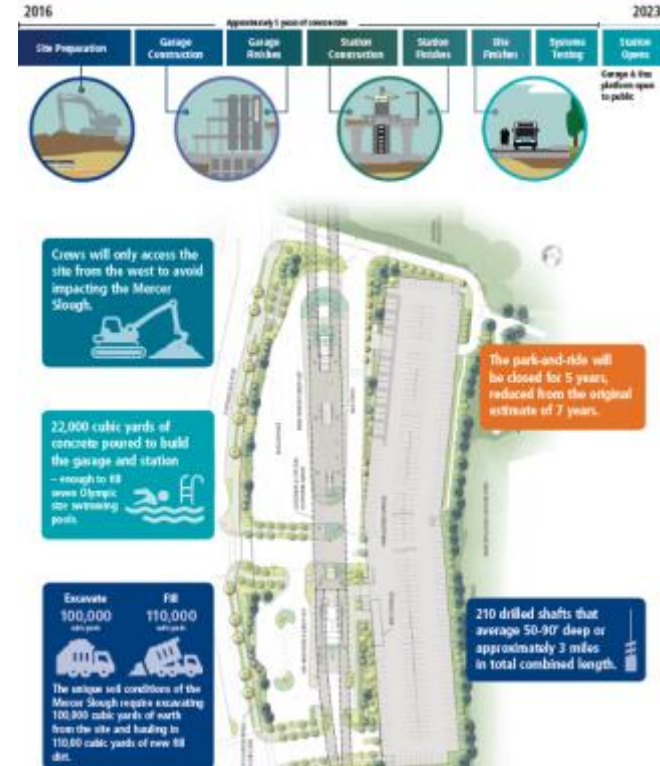
- Serves South Bellevue with an elevated, at-grade and trench alignment along Bellevue Way SE and 112th Ave SE
- Approximately 4,500 daily boardings (2030)
- One station in this segment:
 - **South Bellevue:** Located at current South Bellevue Park-and-Ride lot. Includes approximately 1,500 parking stalls.
 - Southbound HOV lane on Bellevue Way from the South Bellevue Station to I-90



South Bellevue Station construction

Starting in 2016, the South Bellevue park-and-ride will become an active construction zone and no longer accessible to the public.

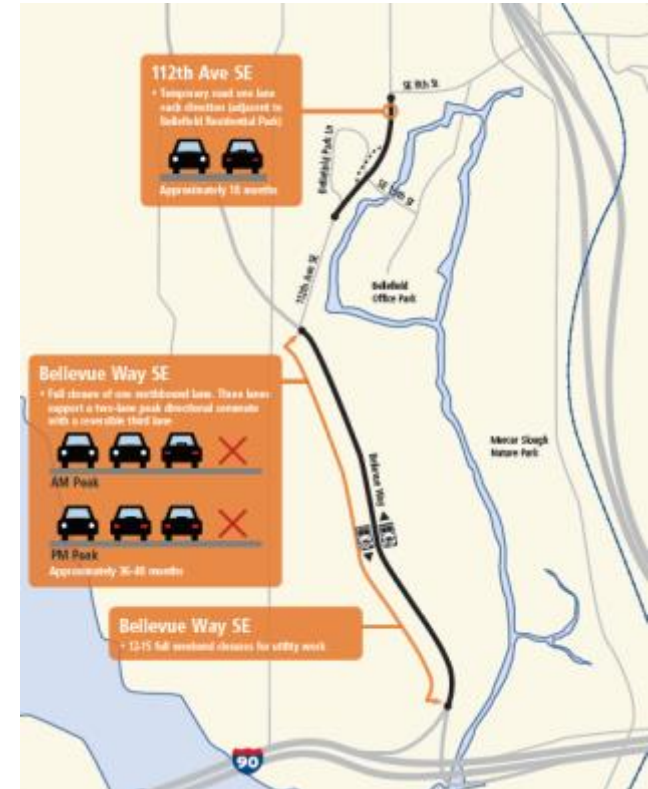
- The South Bellevue park-and-ride will serve as the construction hub for building the light rail station, track, and 1,500-stall parking garage and staging equipment.
- Sound Transit is working to identify alternate options for park-and-ride users, including directing riders to underused park-and-rides, leasing parking space from community churches, and potentially constructing new parking spaces off-site.



Keeping you moving

Goals:

- Maintain 2-lanes of peak directional traffic on Bellevue Way
- Minimize cut-through traffic in neighborhoods
- Minimize overall impacts of utility work; 10 scenarios considered by Sound Transit and City of Bellevue



What we've heard

Noise

- Operational noise analysis complete, proposed wall locations and heights currently under review by City of Bellevue.

Tree Preservation

- Tree inventory complete, preservation and replacement plan presented to CAC

Construction

- Contractor on-board in 2016 with additional schedule detail
- Coordination: City of Bellevue, WSDOT, KC Metro



2015 early construction activity

Work look-ahead for S. Bellevue



Advance utility relocations

- Work expected to take place **mid-2015**
- Utility owners relocate their infrastructure prior to Sound Transit construction
- Puget Sound Energy (electric)
 - ❑ Installation of 2 new poles at SE 30th, east and west sides of Bellevue Way
 - ❑ Installation of 1 new pole at the wye, east of Bellevue Way
- Heavy civil construction, including utility undergrounding and relocation, to begin 2016

Utility relocations – Overview of impacts

Overview of typical impacts:

- Temporary utility service disruptions
- Traffic circulation
- Blocked off work areas
- Noise, vibration, dust and debris
- Storage of work materials and equipment



**Sound Transit 24/7 construction hotline:
888-298-2395**



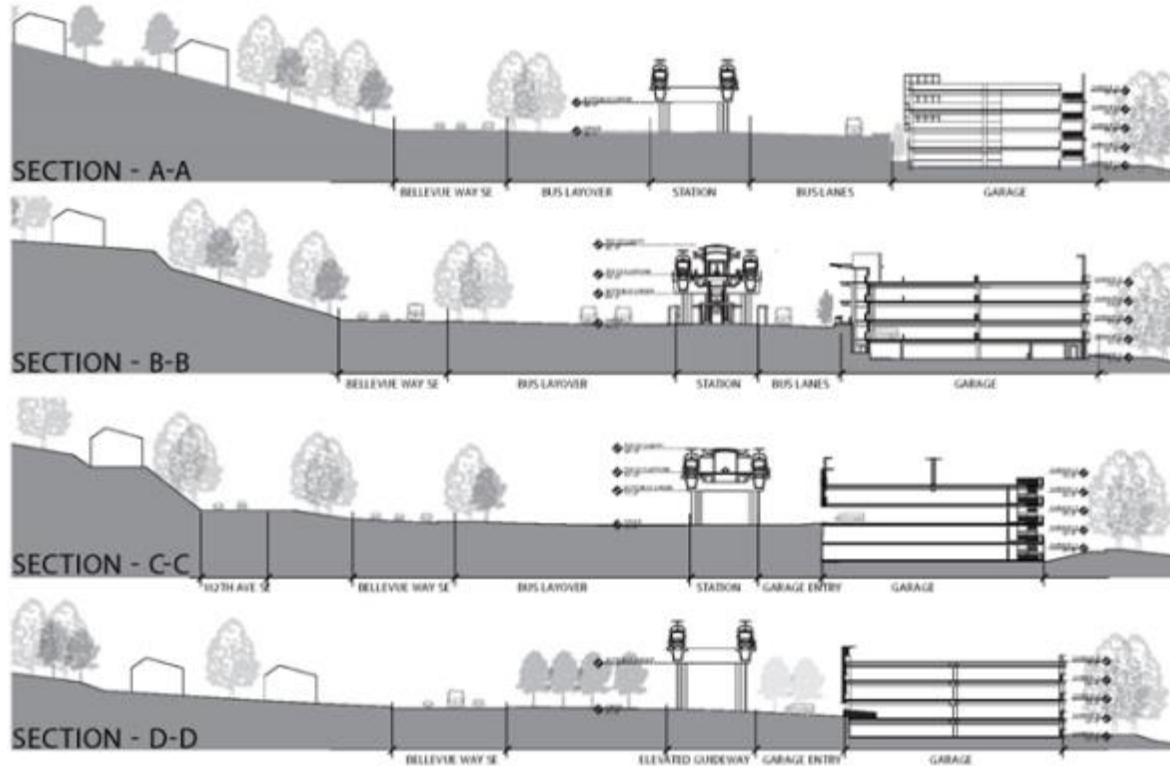
Station Design Overview

South Bellevue Station

Landscaping plan



Overall site sections



Context-Boardwalks

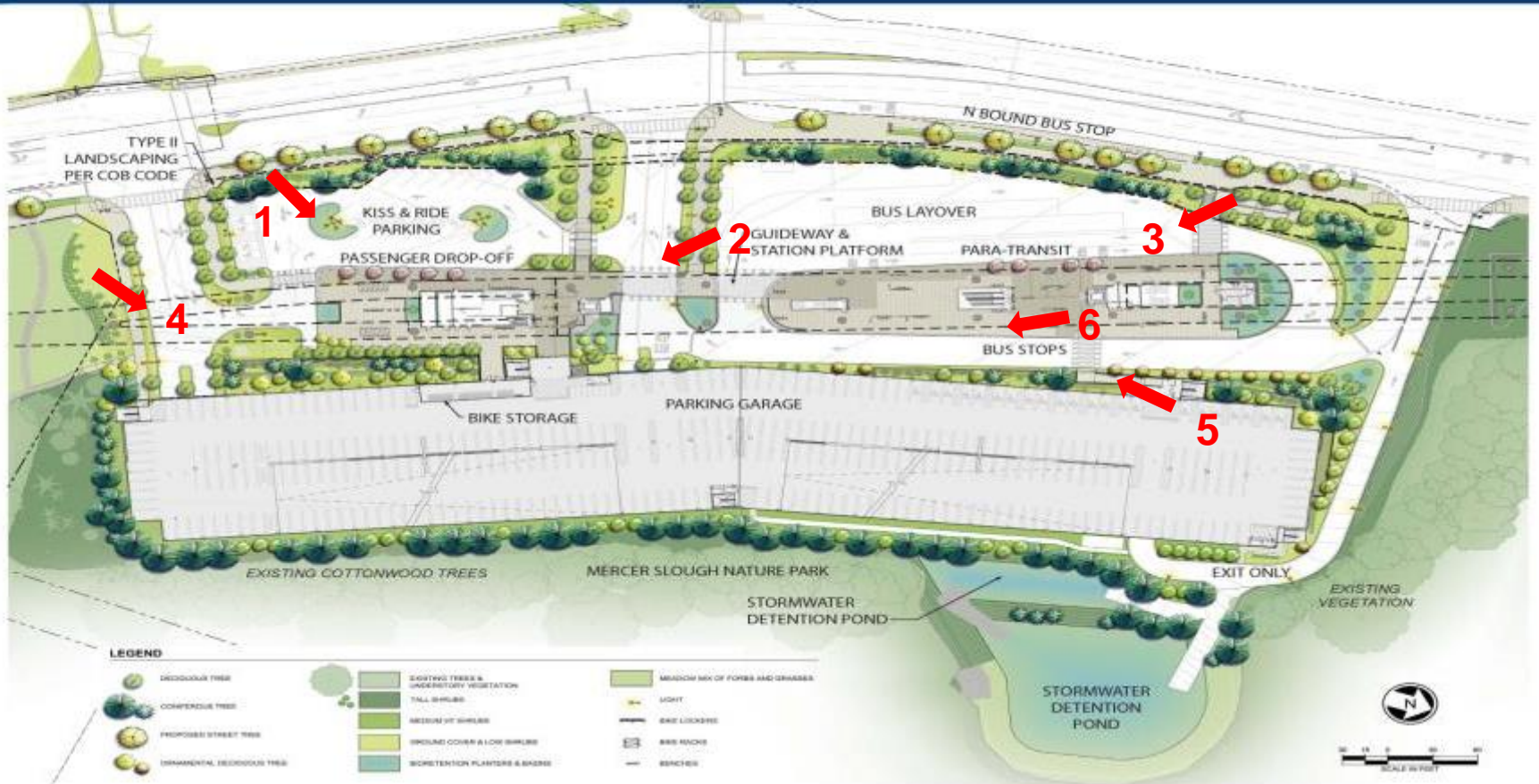


Landscape plan



S. BELLEVUE STATION - LANDSCAPE PLAN

EAST LINK EXTENSION



South entry

60 % Design, Feb. 2014



South entry



North entry



South parking entry



North entry & bus platform

60% Design, Feb. 2014



North entry & bus platform



Platform view to south



***ST*art**

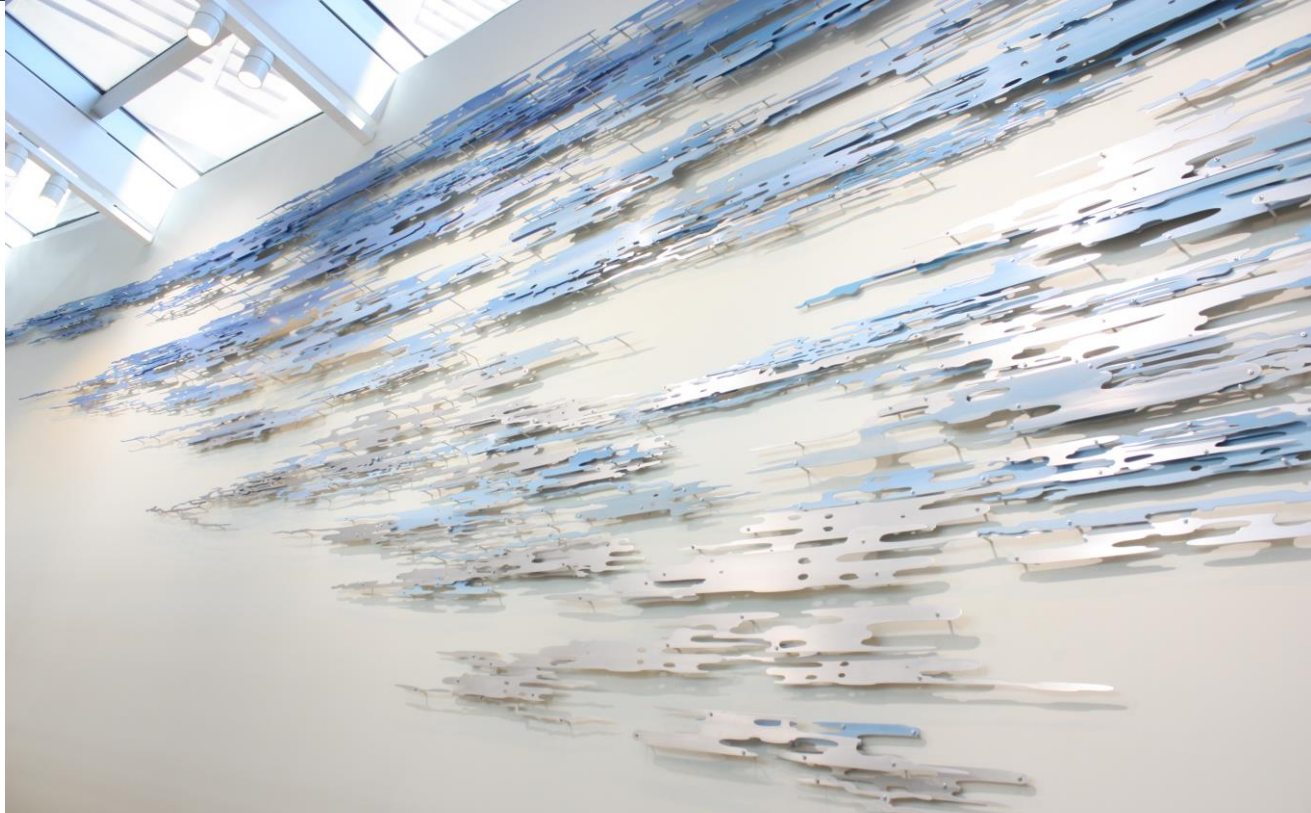
Sound Transit's Integrated Art Program



Katy Stone- past projects



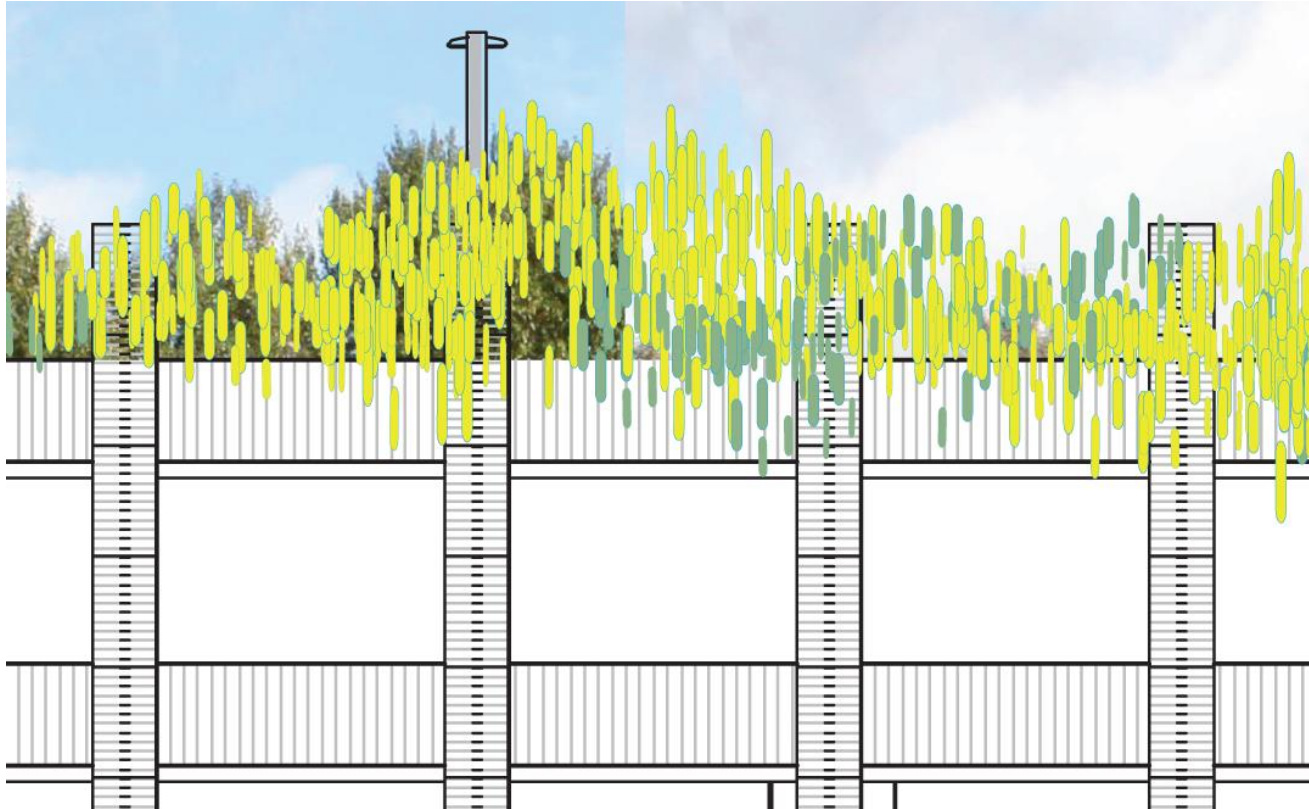
Katy Stone- past projects



Katy Stone- garage facade inspiration



Katy Stone- garage facade

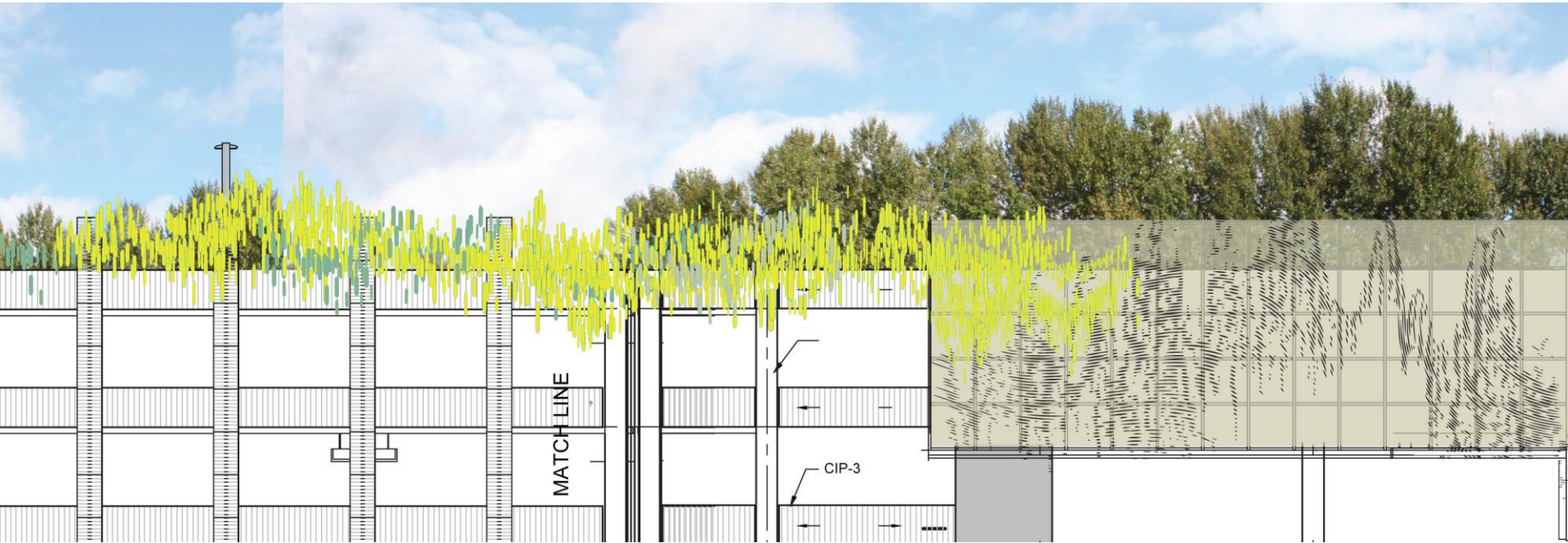


Katy Stone- art sited for prime platform viewing

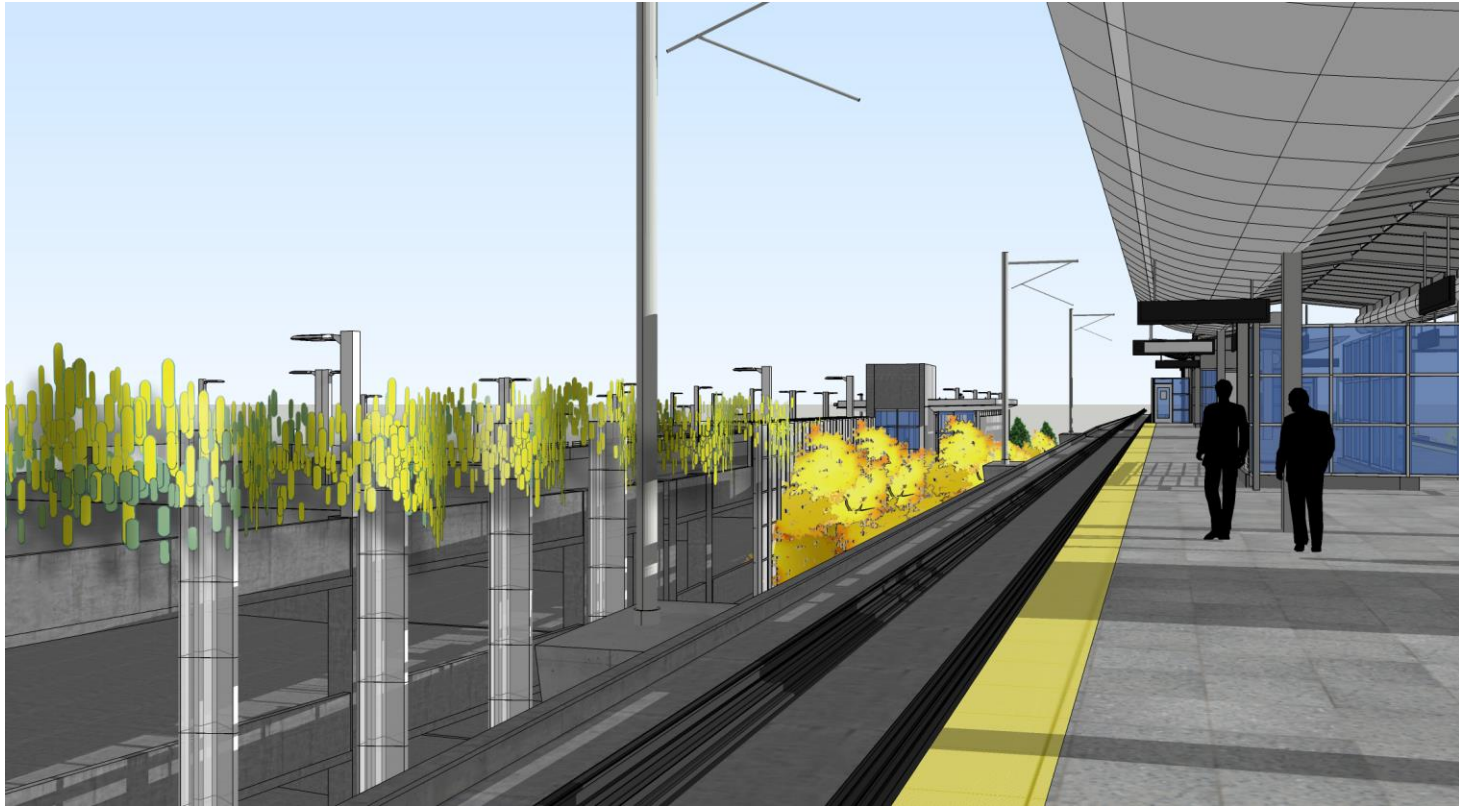
Sculpture location



Katy Stone- garage facade



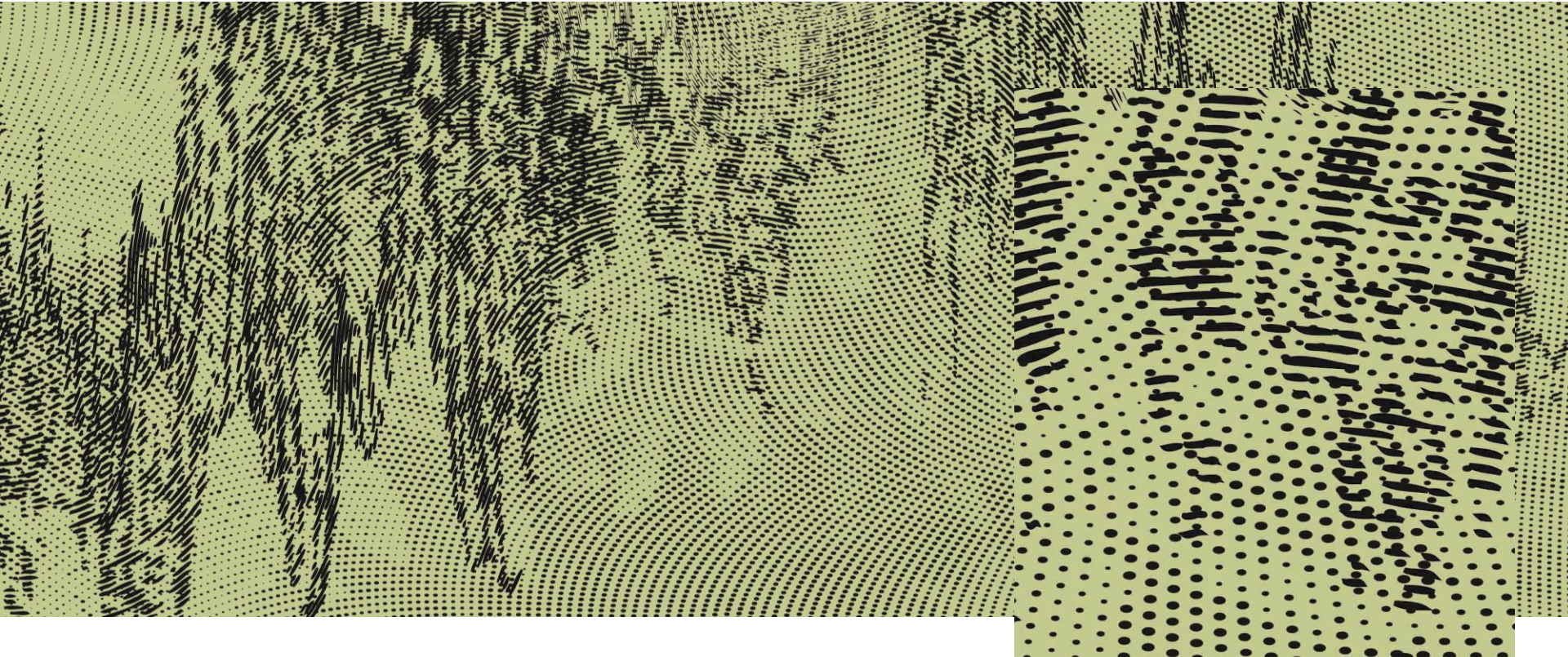
Katy Stone- garage facade



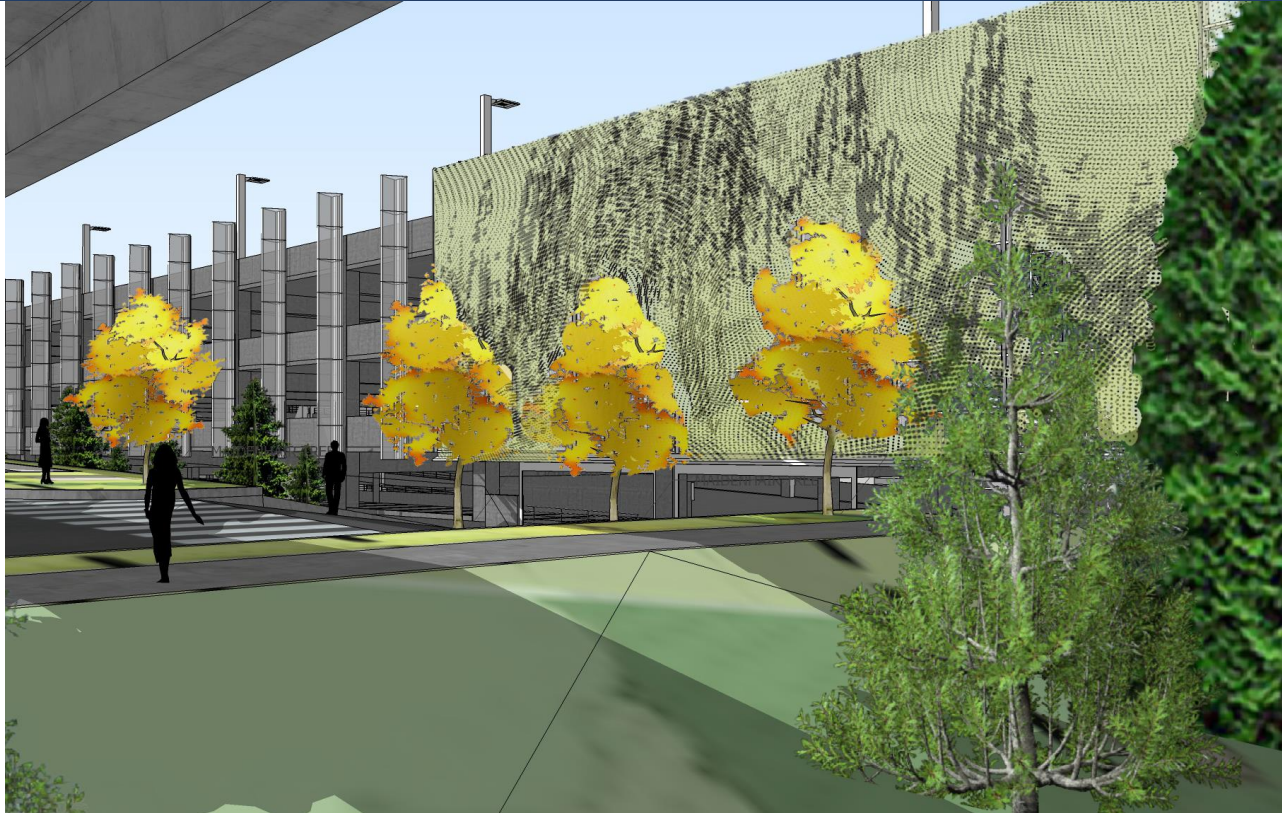
Katy Stone- perforated screen inspiration



Katy Stone- perforated screen study



Katy Stone- perforated garage screen



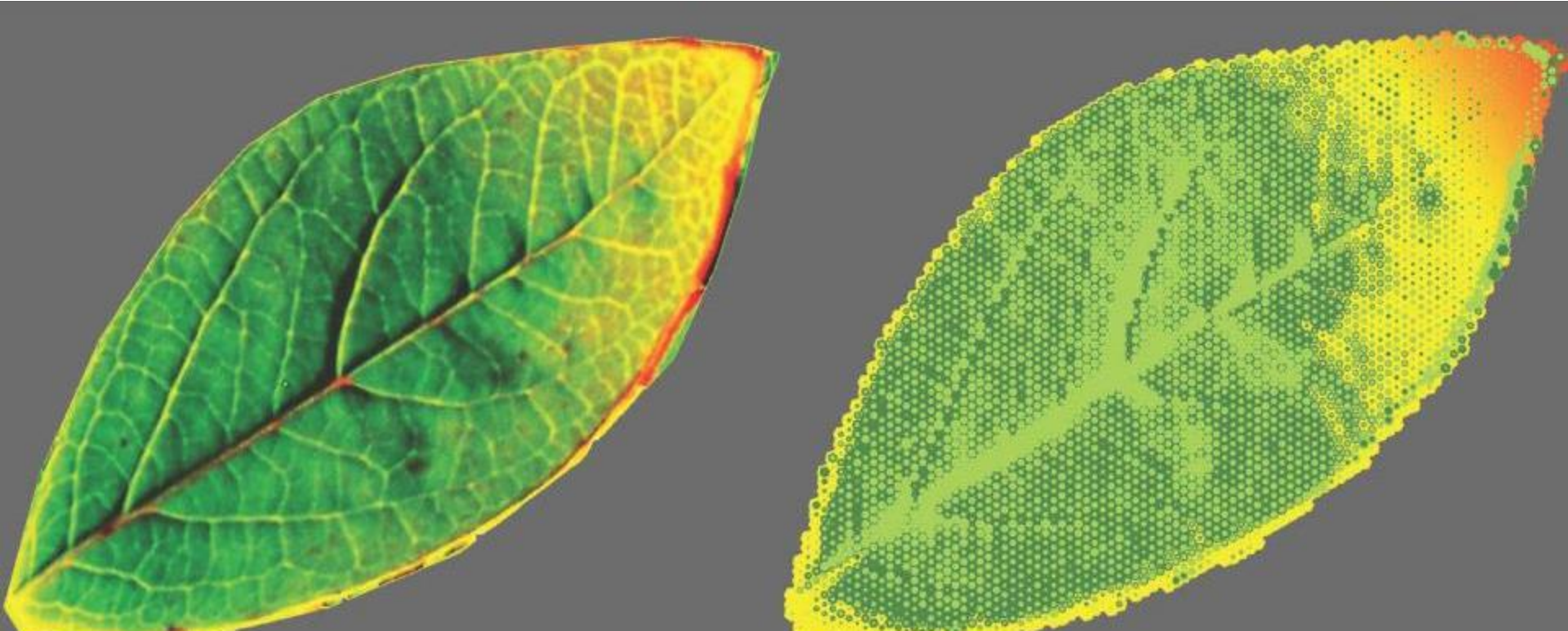
Vicki Scuri- past projects



Site inspiration



Vicki Scuri- station column inspiration and pattern



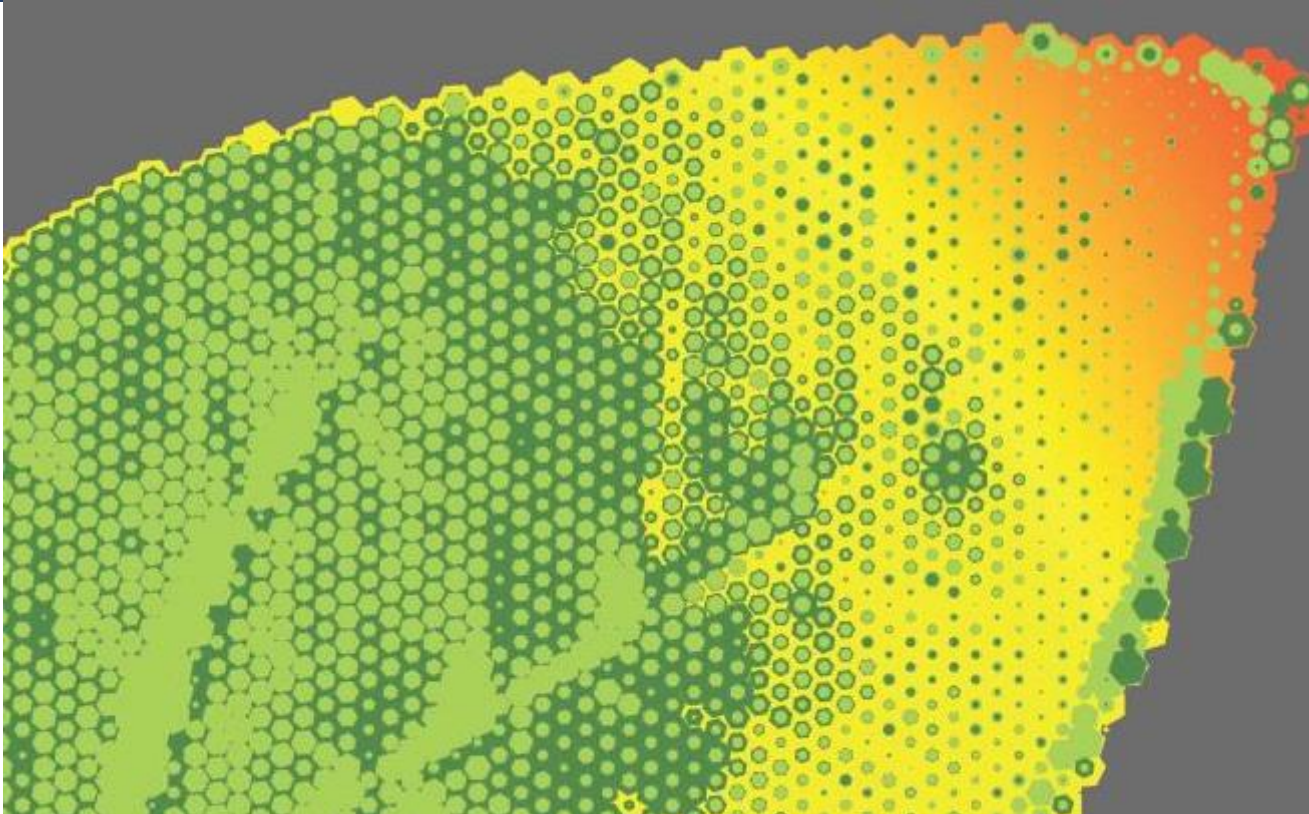
Platform columns before



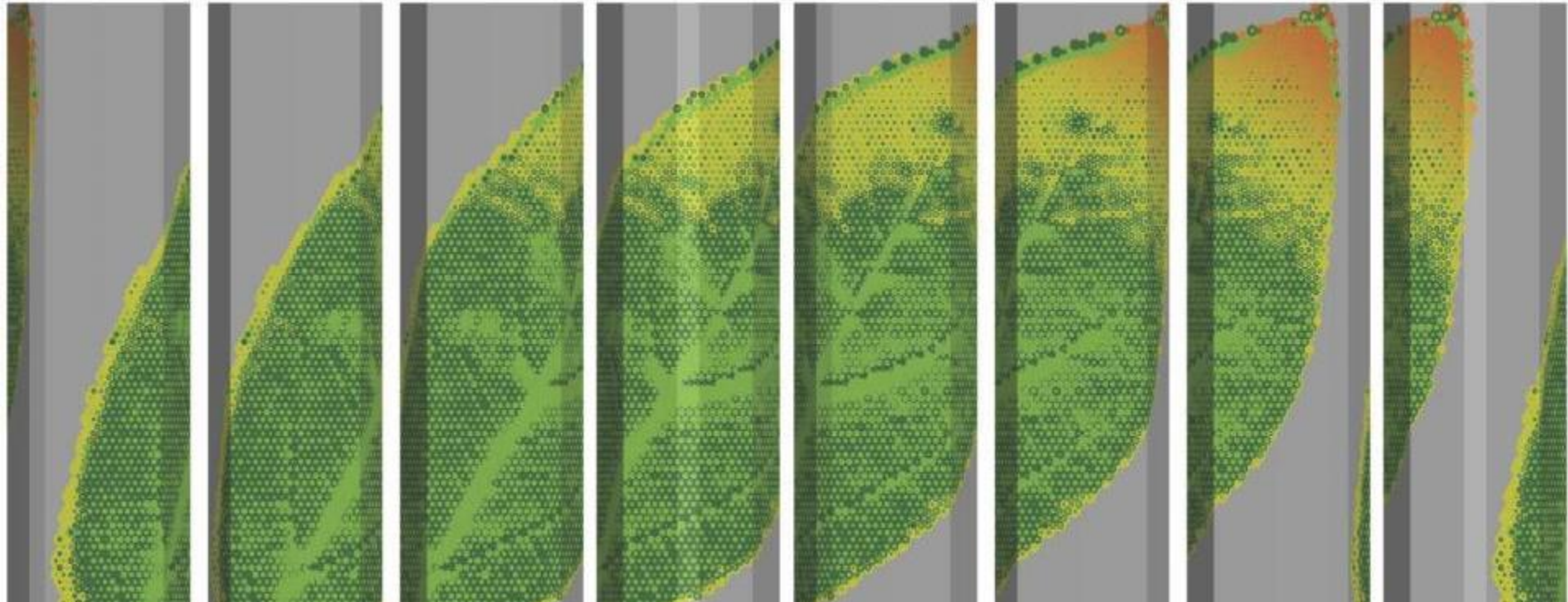
Platform columns after



Vicki Scuri- station column closeup



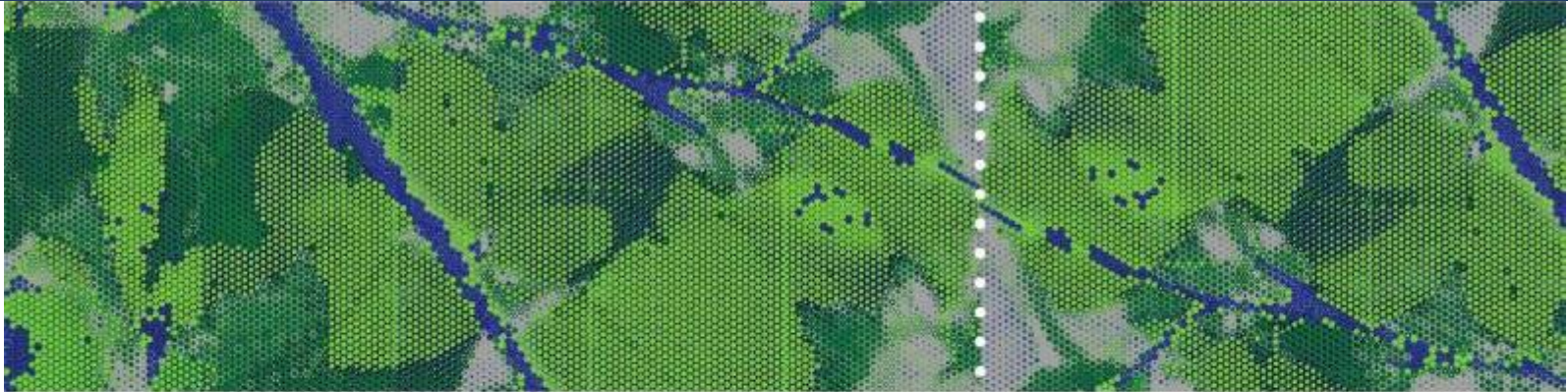
Vicki Scuri- station platform column wrap



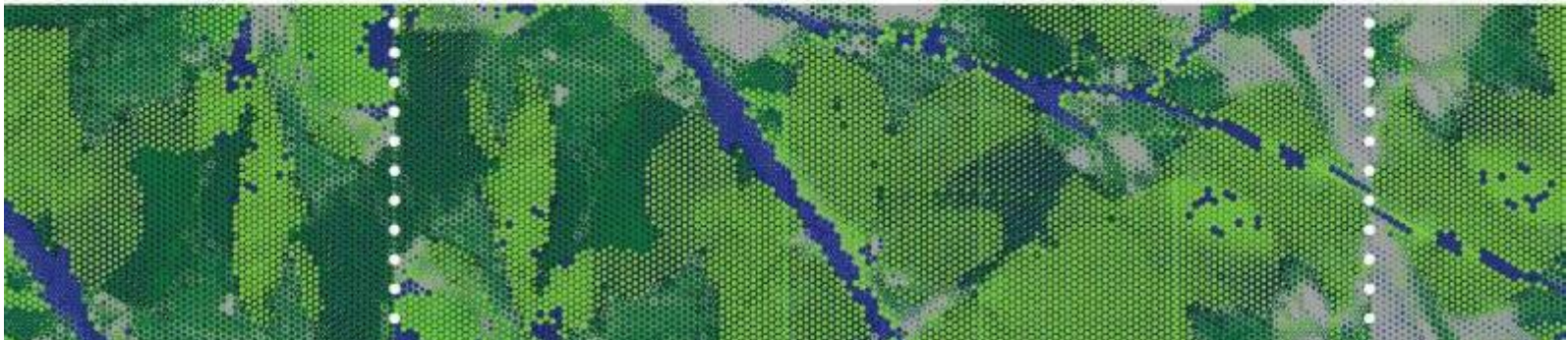
Vicki Scuri- acoustic panel inspiration



Vicki Scuri- acoustic panel patterns



Pattern Repeat Flips at Dotted Line



Acoustic panel- before



Acoustic panel- after



Vicki Scuri- acoustic panel patterns

5 designs create 100s of feet of patterns



What's next?

- Select station names
- Hire contractors
- Secure permits
- Continue community outreach



Questions?

