

WELCOME

The purpose of this meeting is to provide a final update on Roosevelt Station design and gather public comment.

6 p.m. – Meeting opens

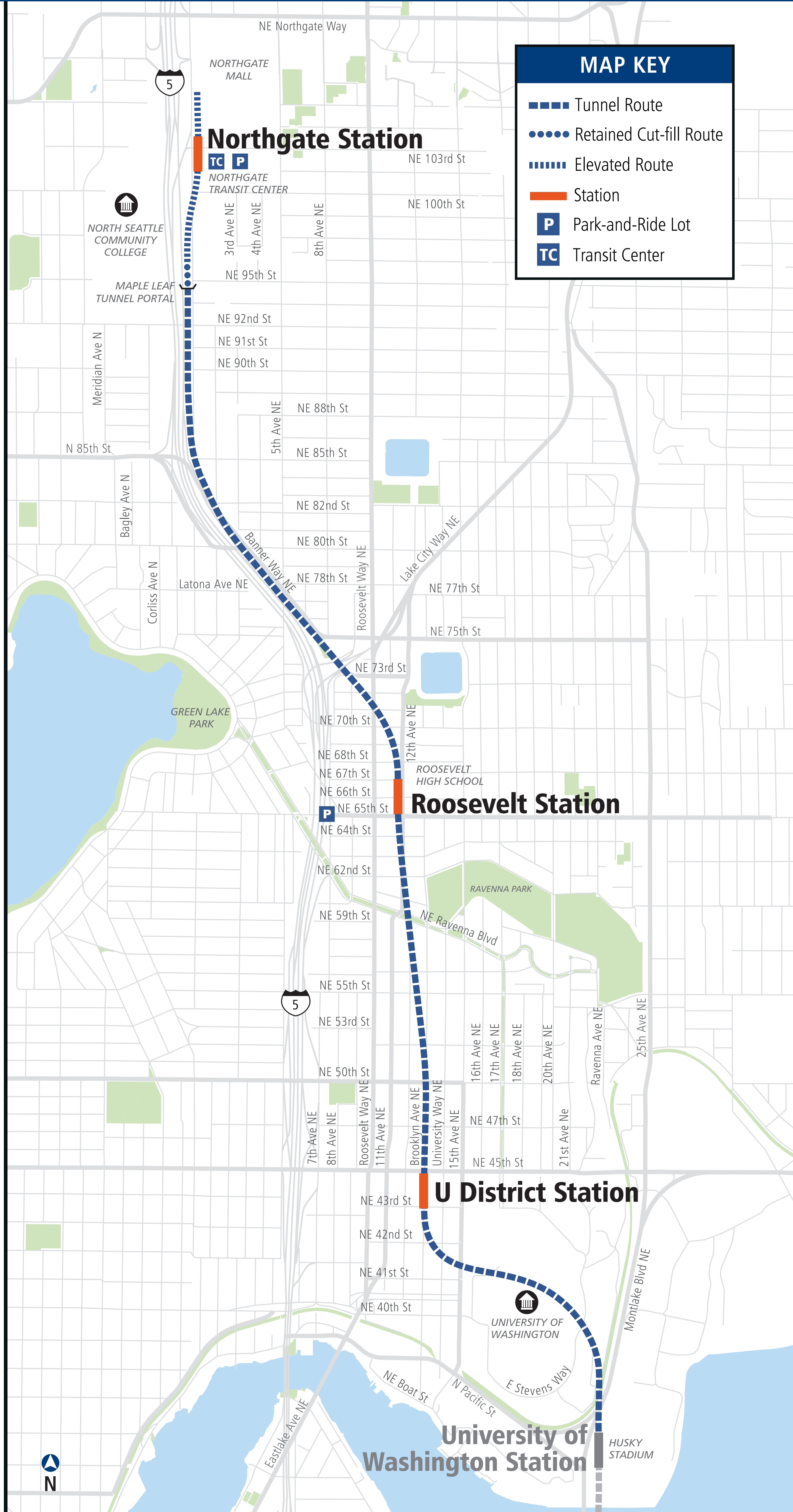
6:30 p.m. – Presentation begins

How to comment:

- Fill out a comment card provided at the comment table
- Speak with our staff at this meeting
- Send an email to northlink@soundtransit.org
- Call 206-398-5300 to speak to the outreach team

NORTHGATE LINK EXTENSION

ROUTE AND STATIONS



Sample Travel Times

Downtown Seattle to Northgate
14 minutes

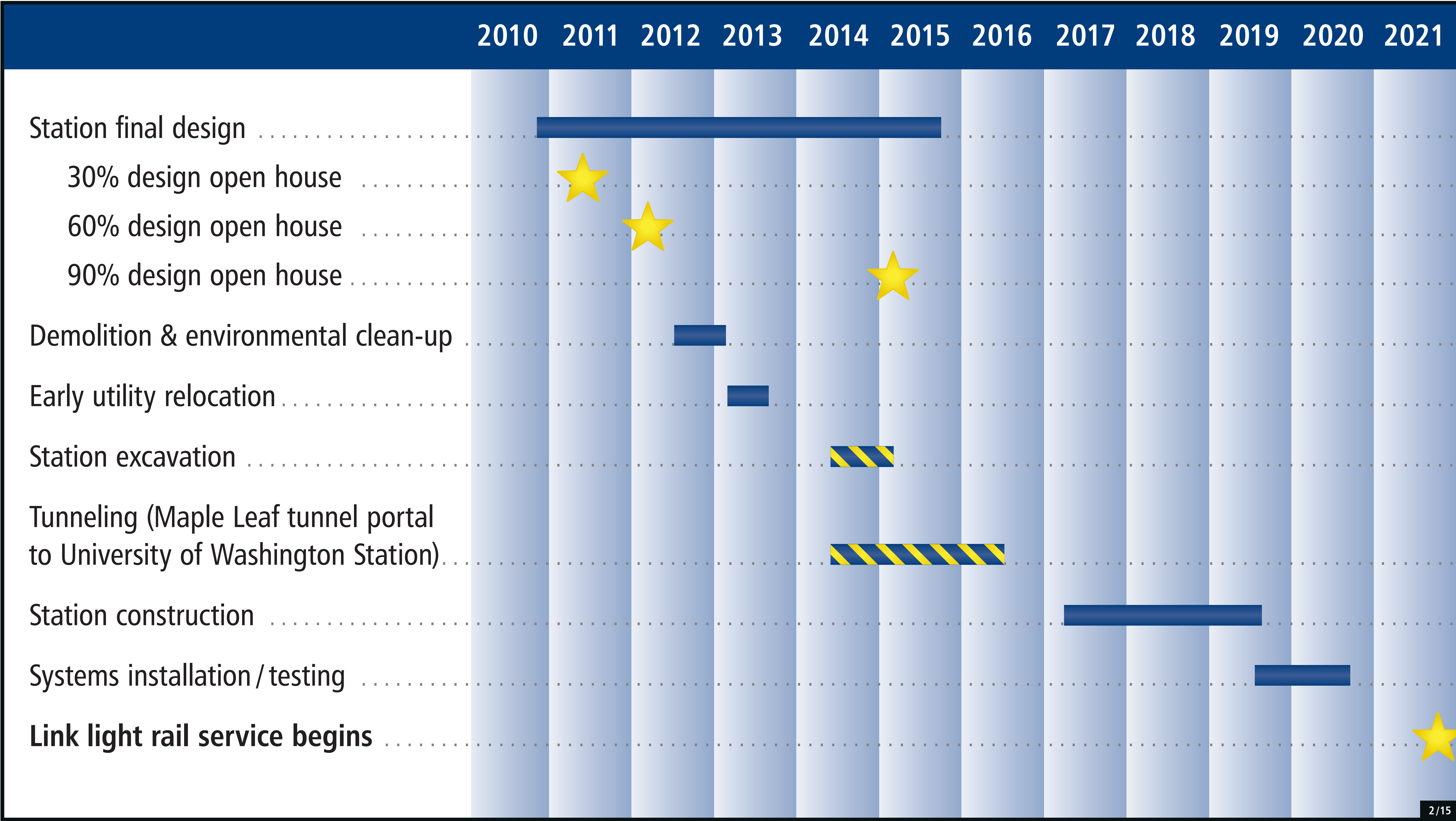
Northgate to Husky Stadium
7 minutes

U District to Downtown Bellevue
32 minutes

Roosevelt to Sea-Tac Airport
44 minutes

Safeco & CenturyLink fields to Northgate
20 minutes

ROOSEVELT STATION SCHEDULE



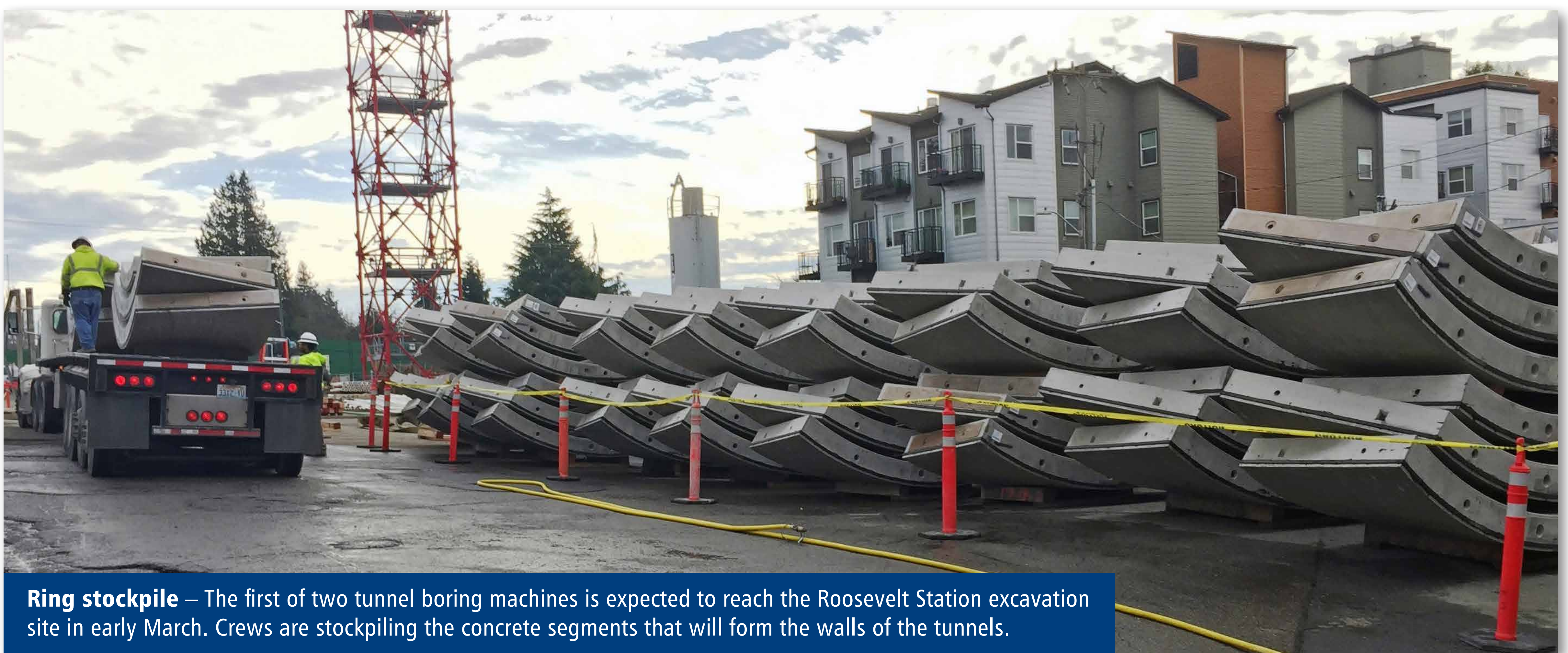
 Duration of noise variance and nighttime work

CONSTRUCTION PHOTOS

ROOSEVELT STATION



Excavation pit – Excavation crews used a conveyor belt to lift dirt out of the site and onto trucks waiting next to 12th Avenue NE.



Ring stockpile – The first of two tunnel boring machines is expected to reach the Roosevelt Station excavation site in early March. Crews are stockpiling the concrete segments that will form the walls of the tunnels.



65th restoration – Crews are restoring the pavement at the intersection of NE 65th Street and 12th Avenue NE. This work is expected to be complete in late spring/early summer.

STATION ENTRANCES

ROOSEVELT STATION 90% DESIGN

SOUTH ENTRANCE



NORTH ENTRANCE



VIEW FROM NE 66TH STREET & 12TH AVENUE NE

ROOSEVELT STATION 90% DESIGN

LOOKING NORTH



LOOKING SOUTH



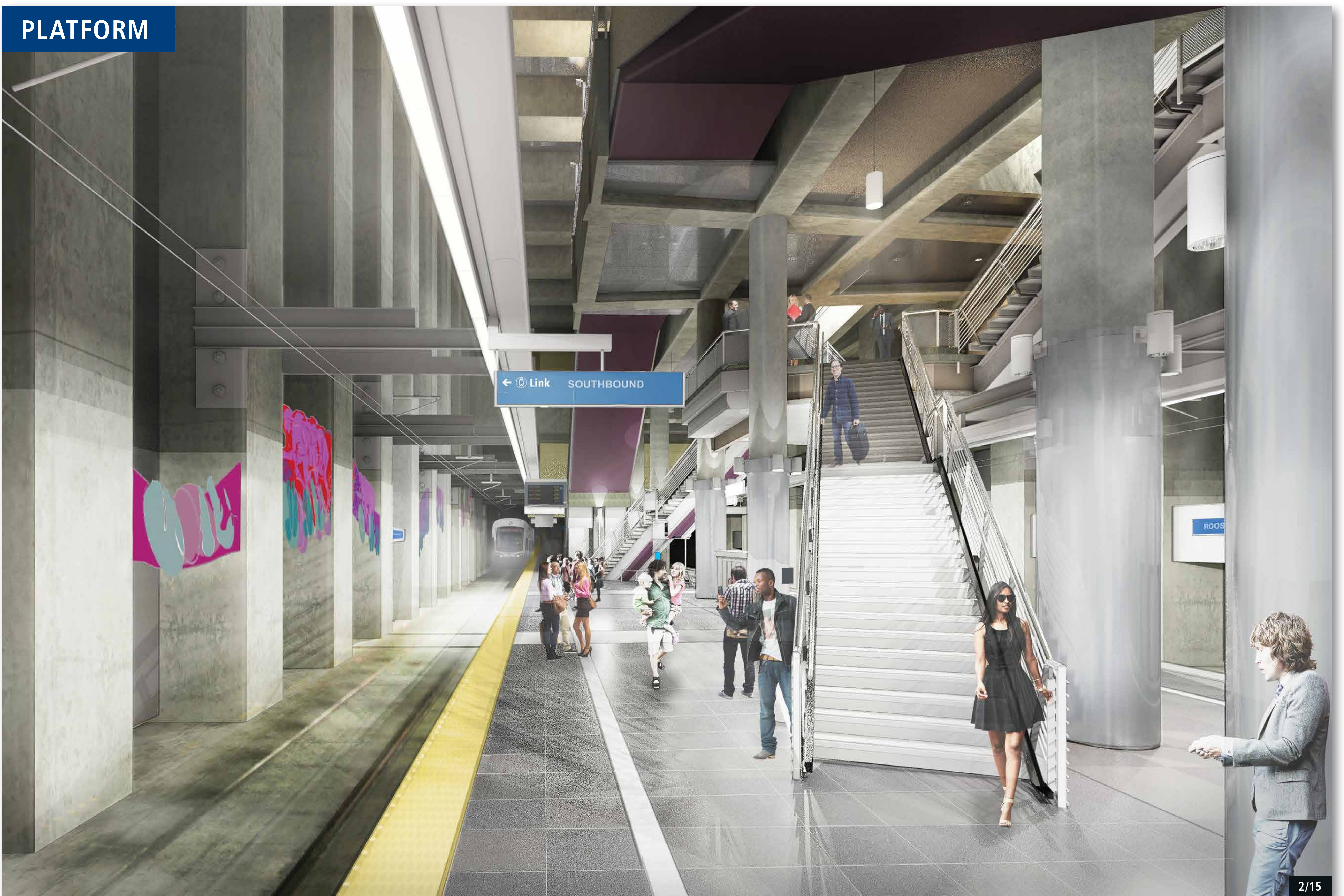
STATION INTERIOR

ROOSEVELT STATION 90% DESIGN

NORTH LOBBY



PLATFORM



STATION INTERIOR

ROOSEVELT STATION 90% DESIGN

SOUTH LOBBY



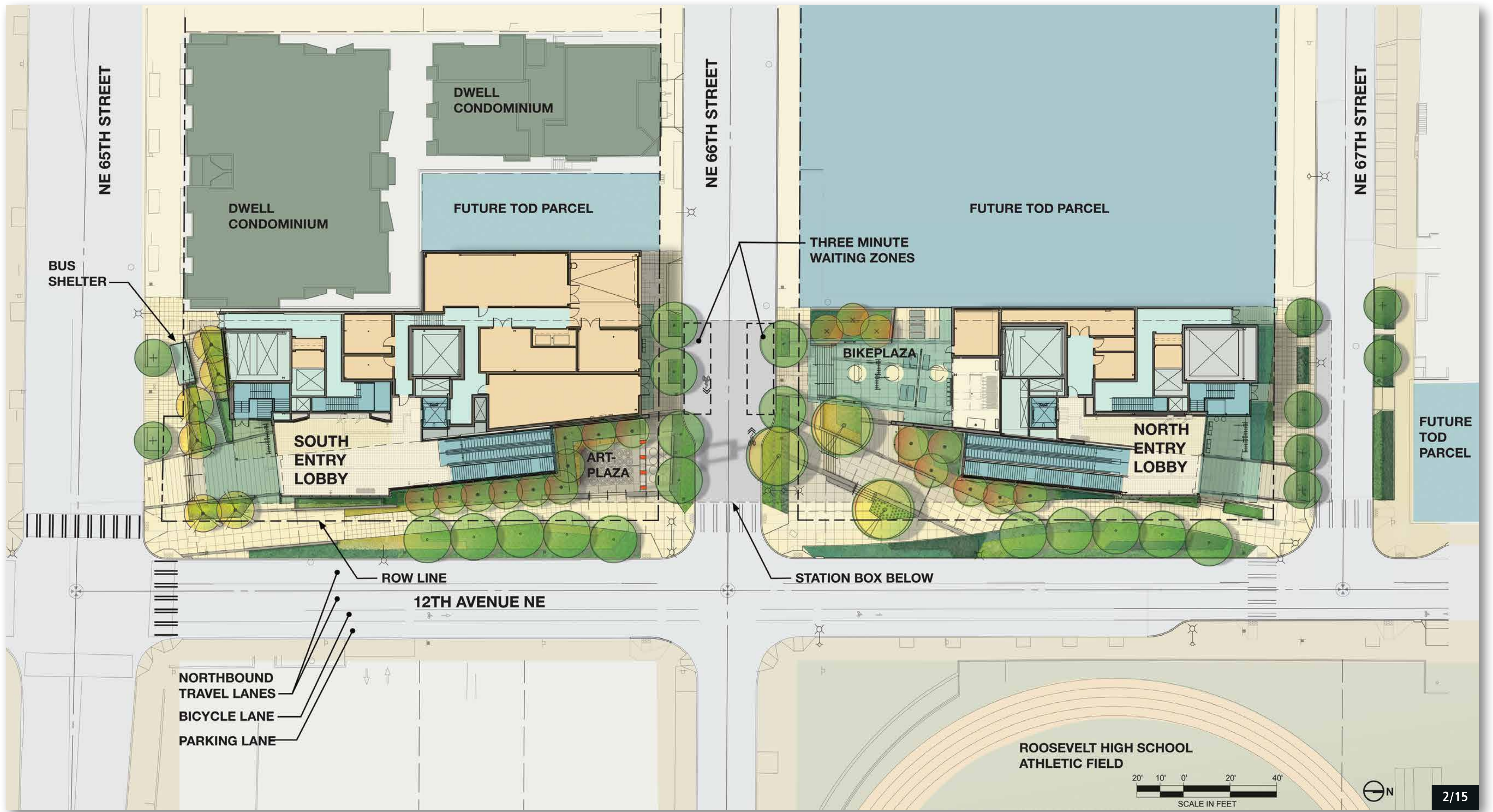
SOUTH LOBBY ESCALATORS/STAIRS



SITE PLAN AND BIRDSEYE VIEW

ROOSEVELT STATION 90% DESIGN

SITE PLAN



BIRDSEYE VIEW

