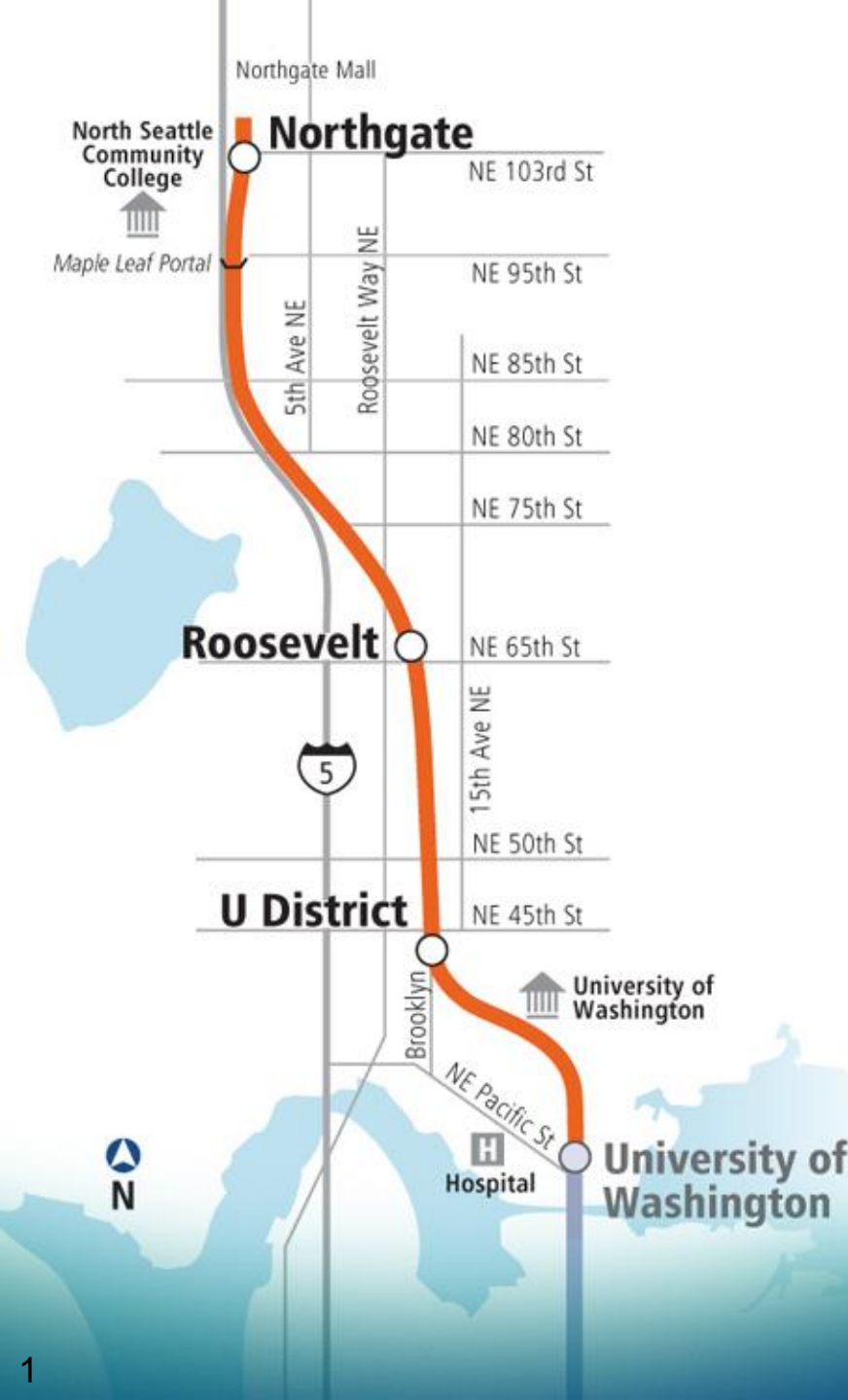


# Tonight's Agenda

- 6:00 pm – Open House
- 6:30 pm – Presentation
  - **Introduction and Roosevelt Station Overview**
    - Kristin Hoffman, Station Project Manager
    - Ryan Bianchi, Community Outreach Specialist
  - **Station and Landscape Design**
    - David Hewitt, Station Architect
  - **Exterior Art Concept**
    - Kurt Kiefer on behalf of R&R Studios
  - **Interior Art Concept**
    - Kurt Kiefer on behalf of Luca Buvoli
  - **Questions and Answers**
- 7:45 pm – Return to Open House
- 8:00 pm – Close



# Roosevelt Station 90% Design & Art Open House

February 25, 2015







# Northgate Link

## (University District to Northgate)

- 4.3-mile light rail extension
- Stations at U District, Roosevelt, and Northgate
- Completion: 2021
- 62,000 daily boardings added to system by 2030

# Roosevelt Station

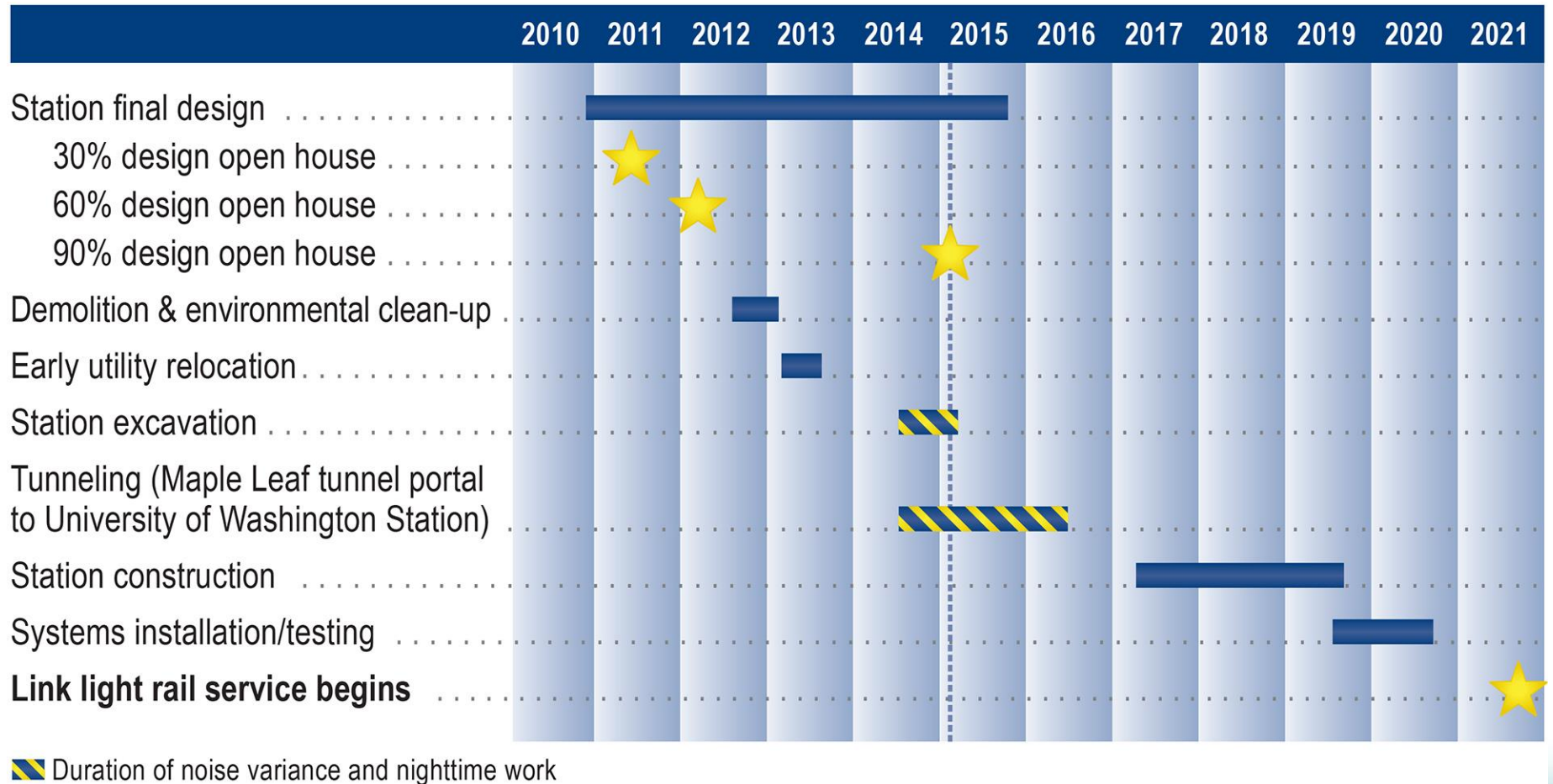
## Key Features

- Station platform 70'-90' underground
- Elevators, escalators and stairs at both entrances
- Bicycle parking
- Connections to buses on NE 65<sup>th</sup> St, 12<sup>th</sup> Ave NE and Roosevelt Way NE

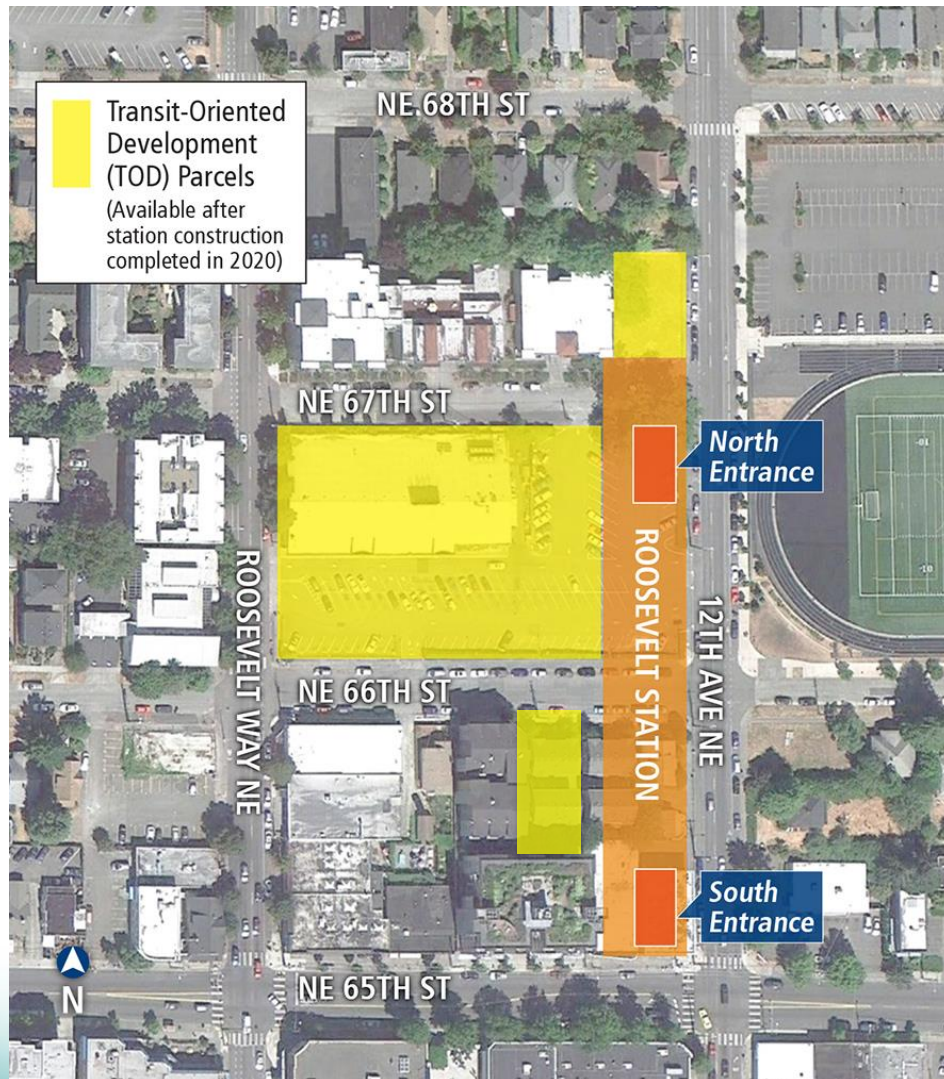




# Roosevelt Station Schedule



# Transit Oriented Development



- Conducting pre-development analysis
- Public engagement to begin fall 2015
- Targeting 2018 to start competitive bid process
- Ideally make land available for development in 2020



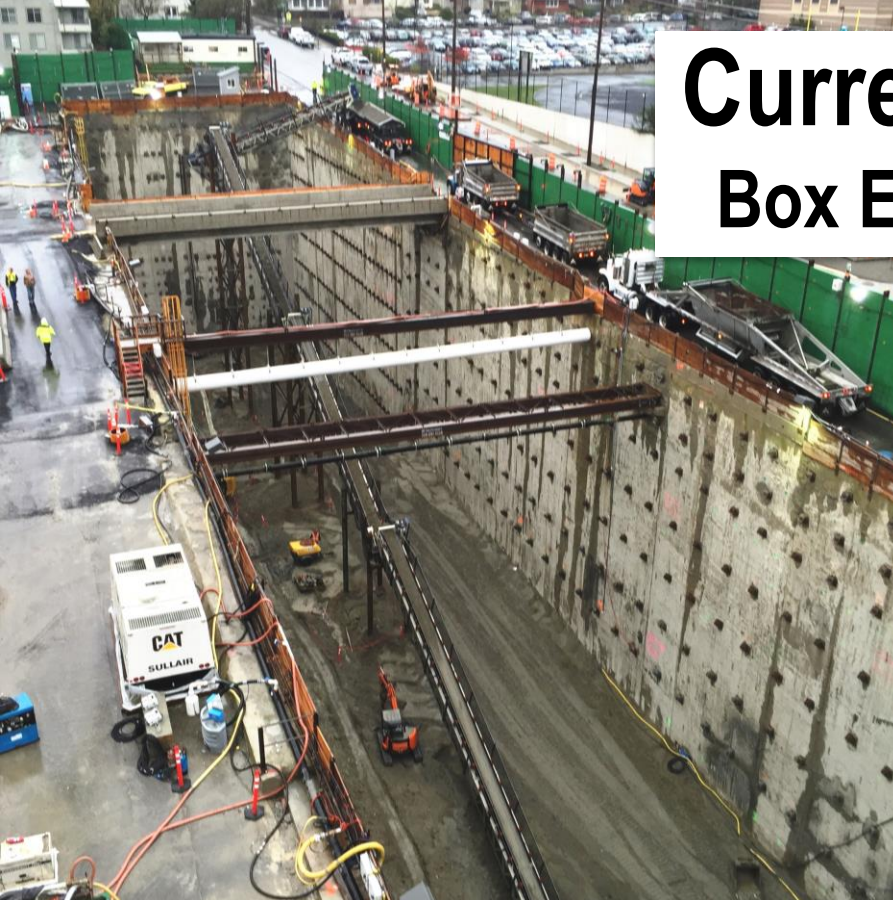
# Current Work

## Street Restoration





# Current Work Box Excavation





# Current Work

## Preparing for TBM Arrival



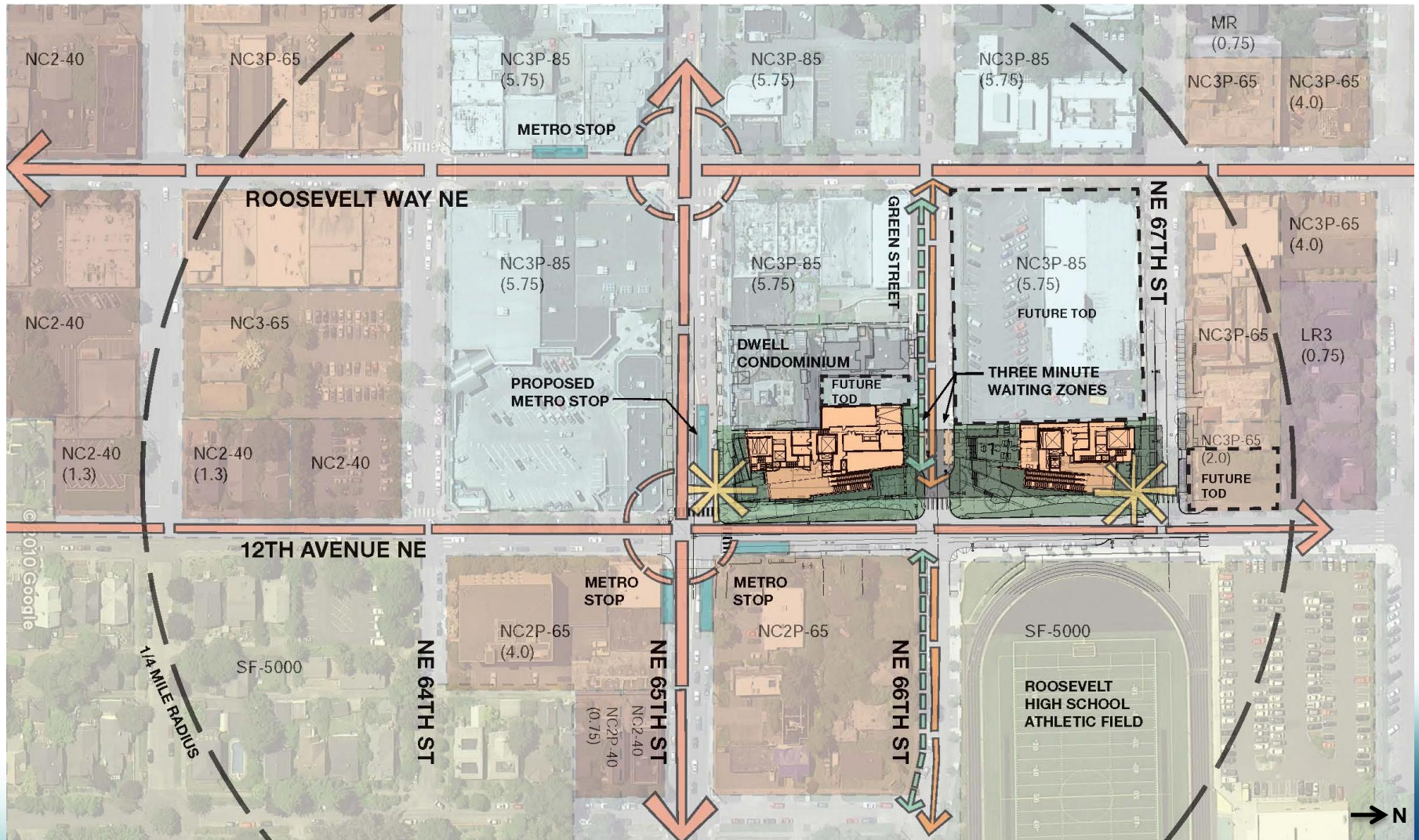


# Vicinity Map





# Site Map





# Birdseye Perspective





# South Entry





# South Entry





# NE 66<sup>th</sup> Street

## Looking Northwest





# NE 66<sup>th</sup> Street

## Looking Southwest





# North Entry





# Urban Elements

EDGE INTERRUPTIONS



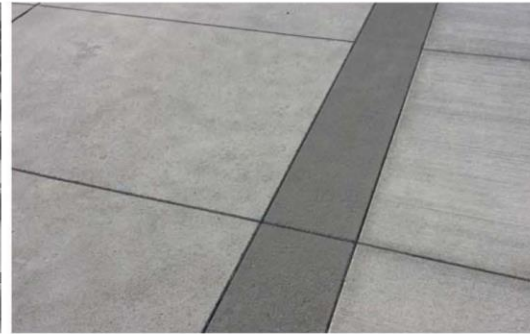
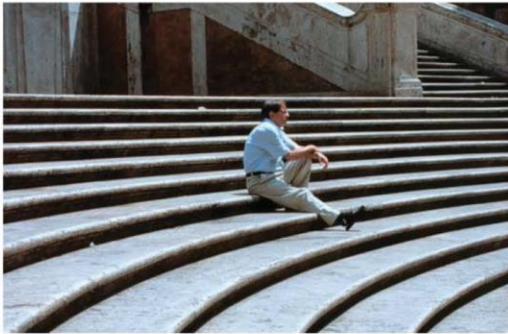
SEATING



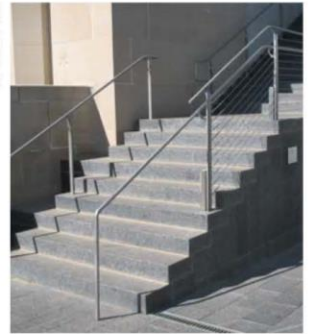
BICYCLE FACILITIES



PAVEMENT AND STEPS



RAILINGS



UNDERSTORY PLANTING





# Tree Species

EMERALD SUNSHINE ELM



JAPANESE HORNBEAM

JAPANESE STEWARTIA



JAPANESE MAPLE 'CORAL BARK'

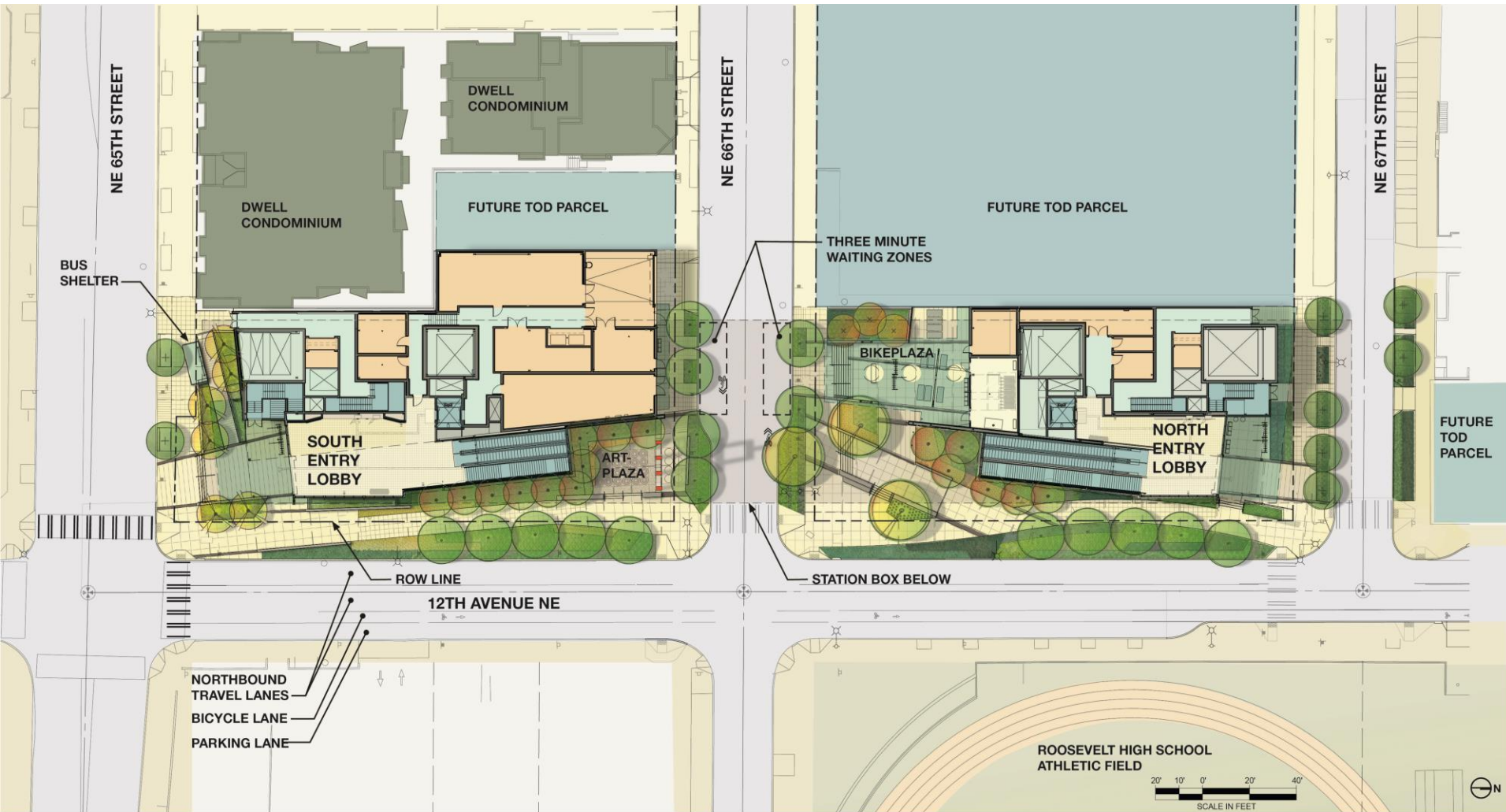
PAPERBARK MAPLE



VINE MAPLE

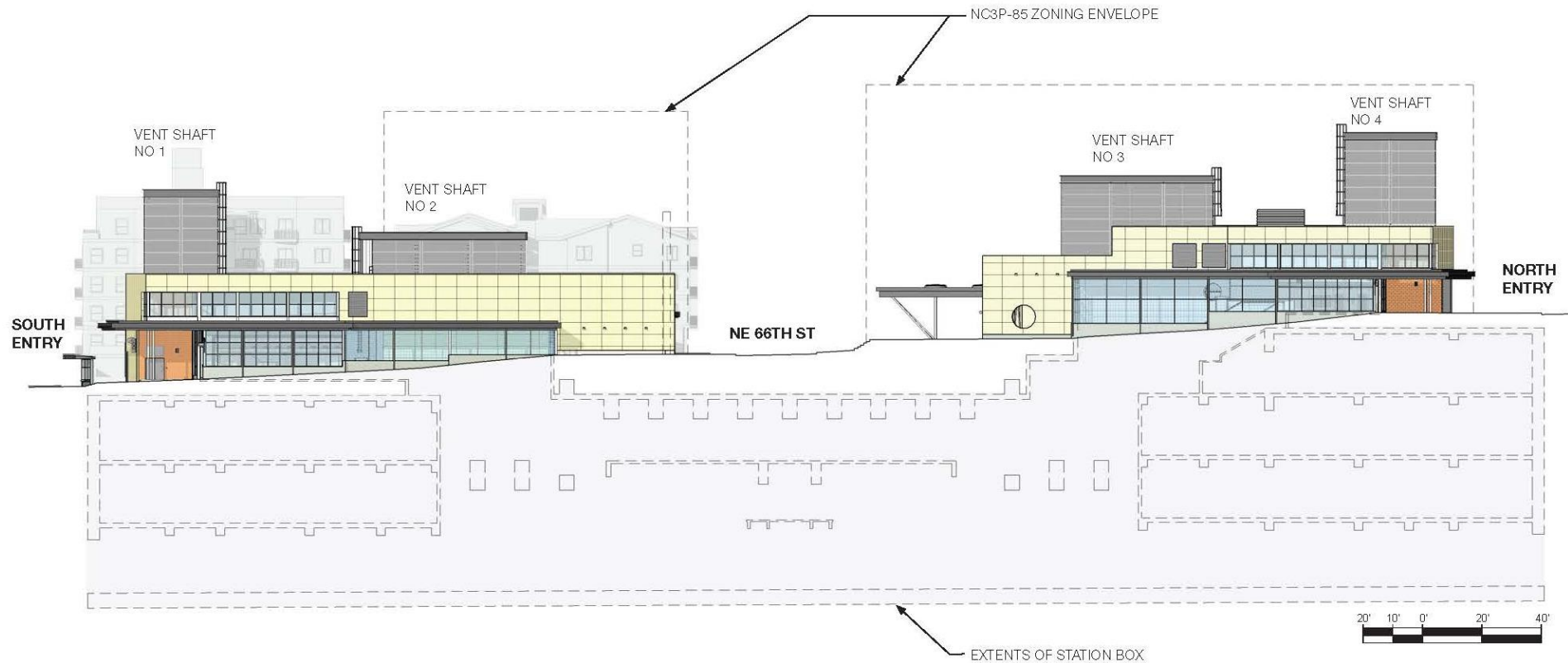


# Site Plan



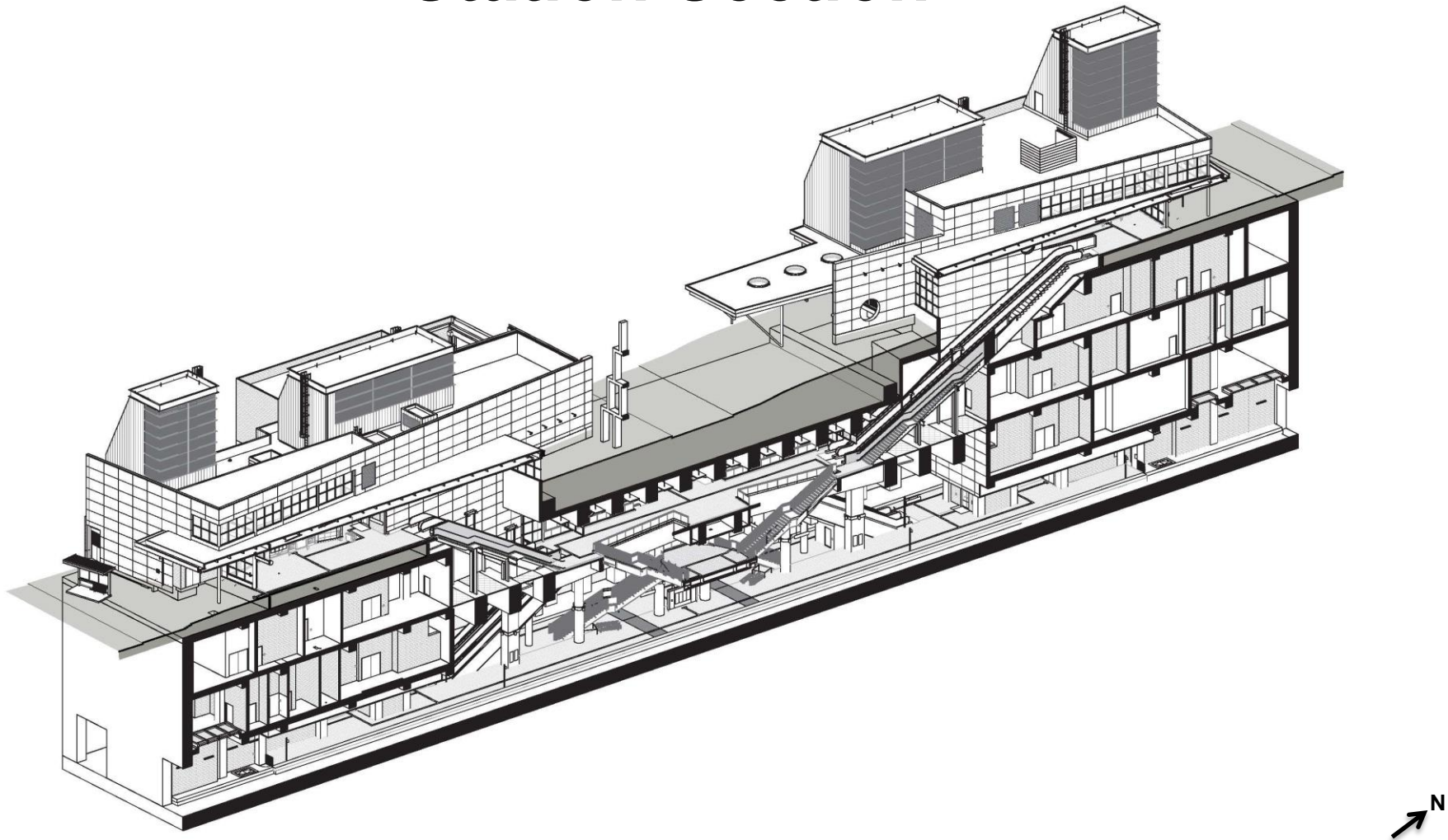


# East Elevation





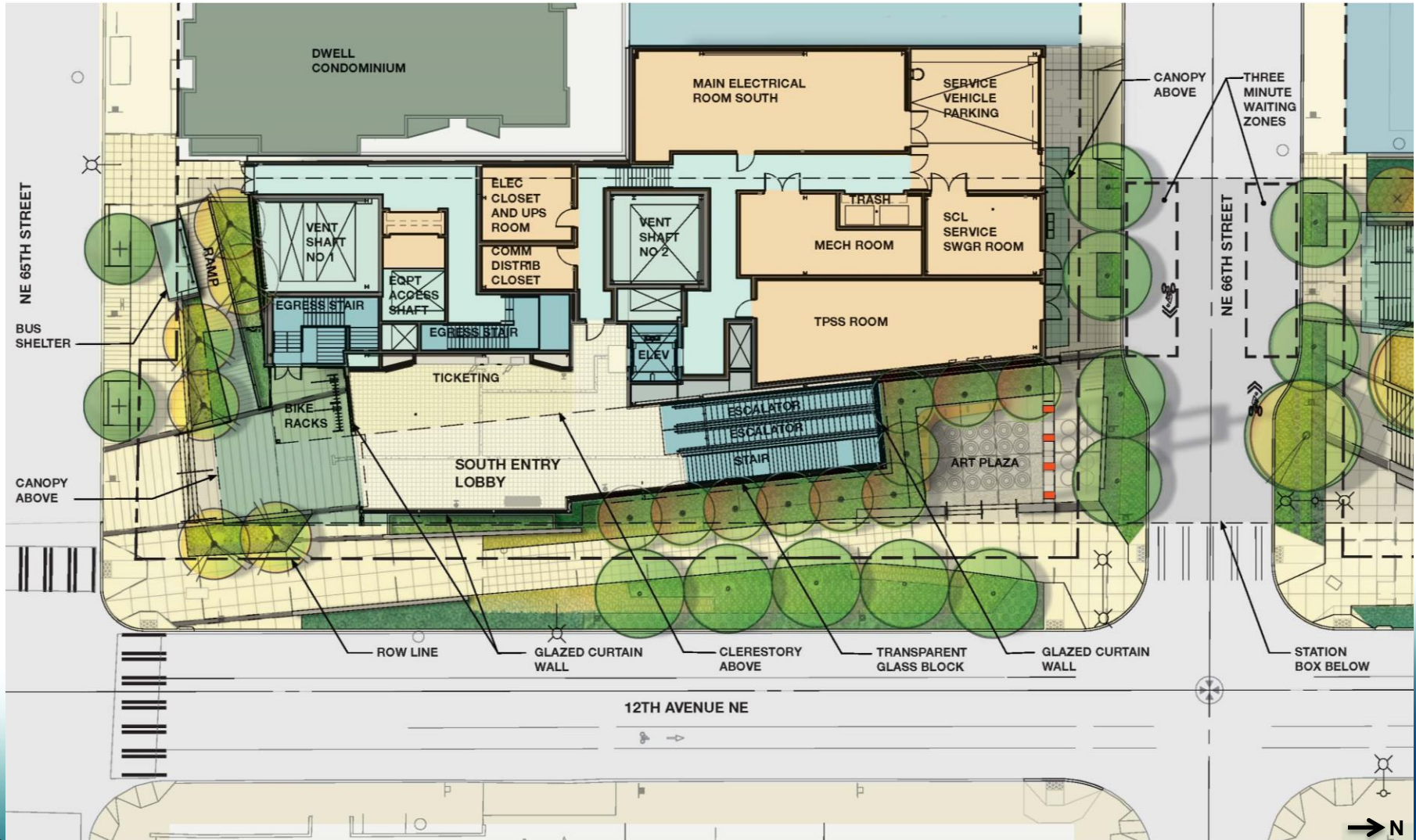
# Station Section





# South Entry

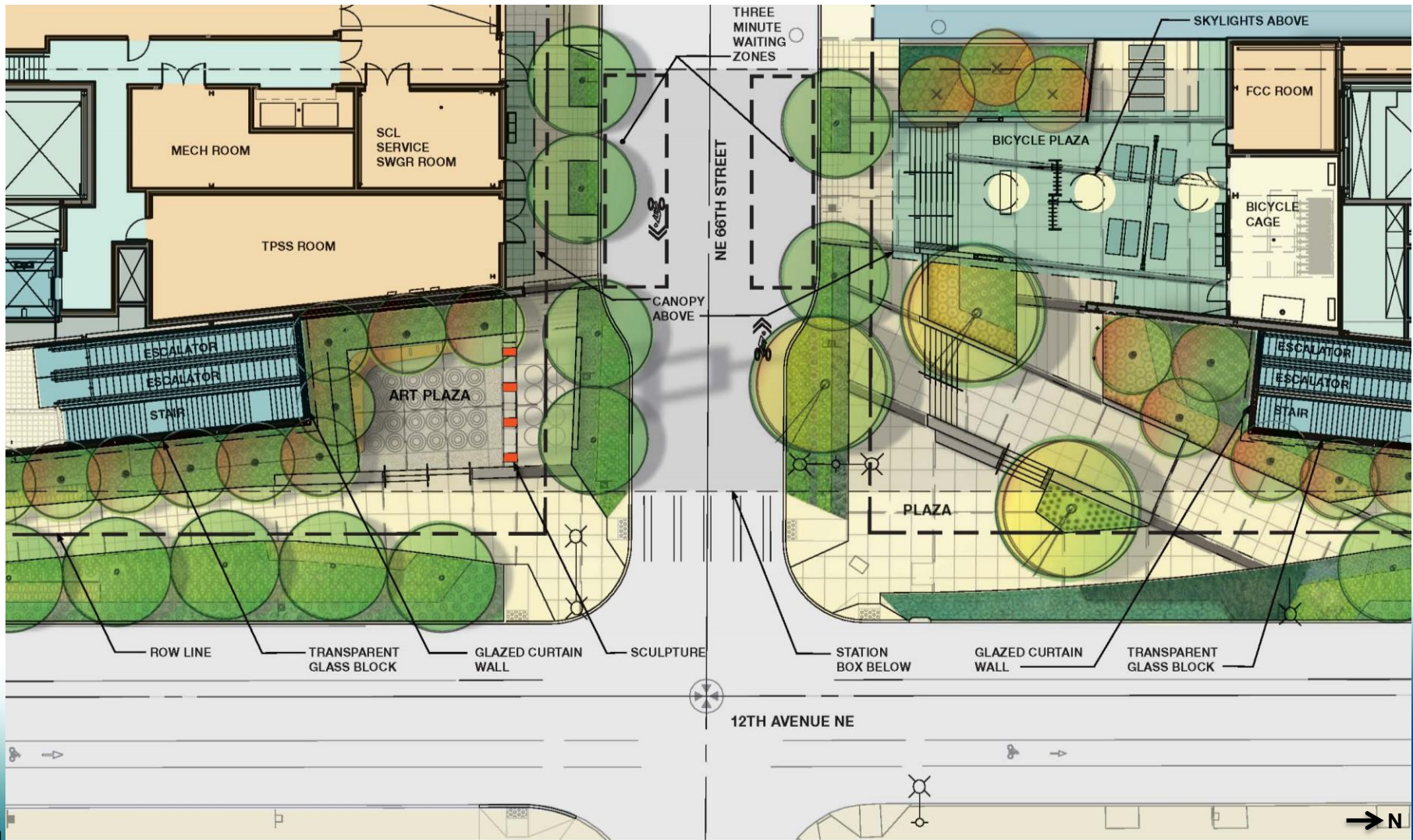
## Enlarged





# NE 66<sup>th</sup> Street Plazas

## Enlarged



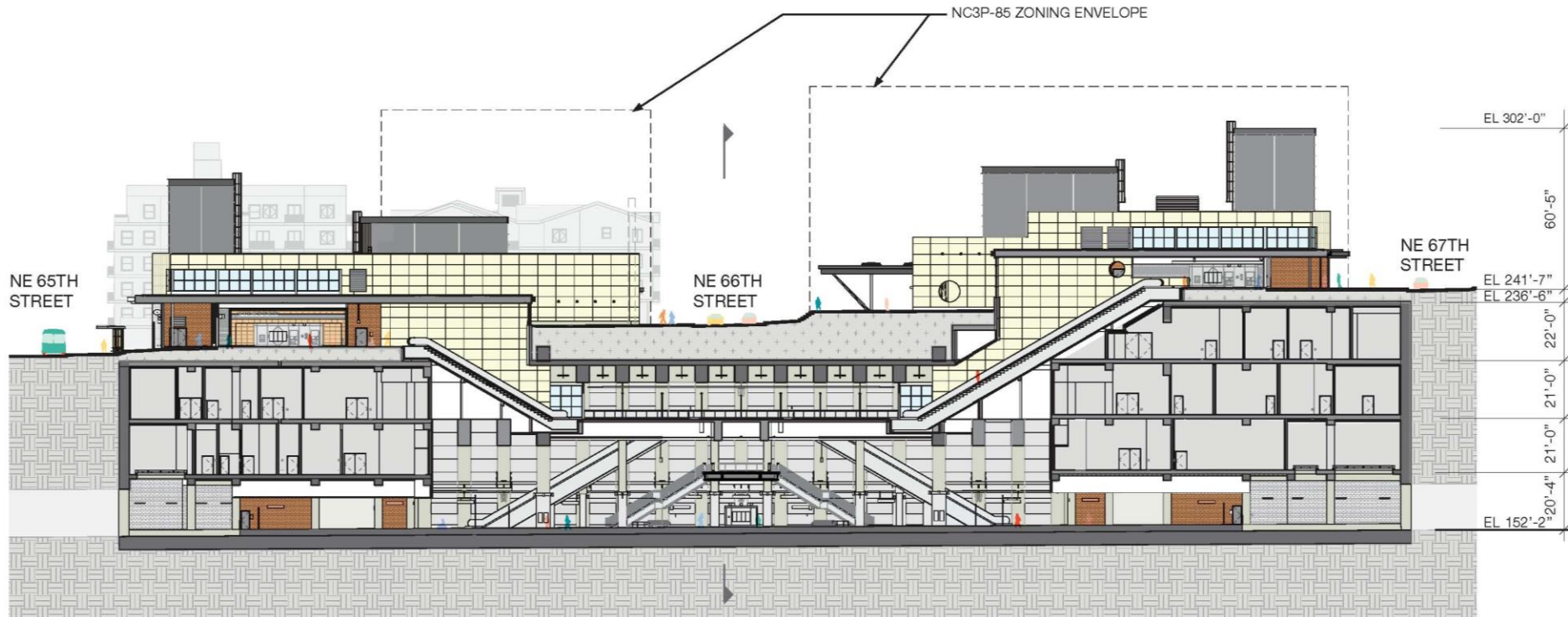


# North Entry Enlarged



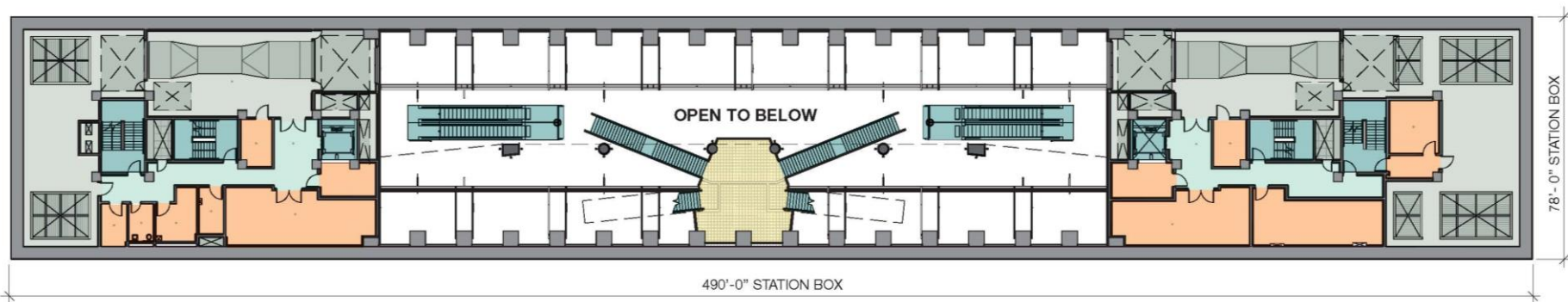


# Longitudinal Section

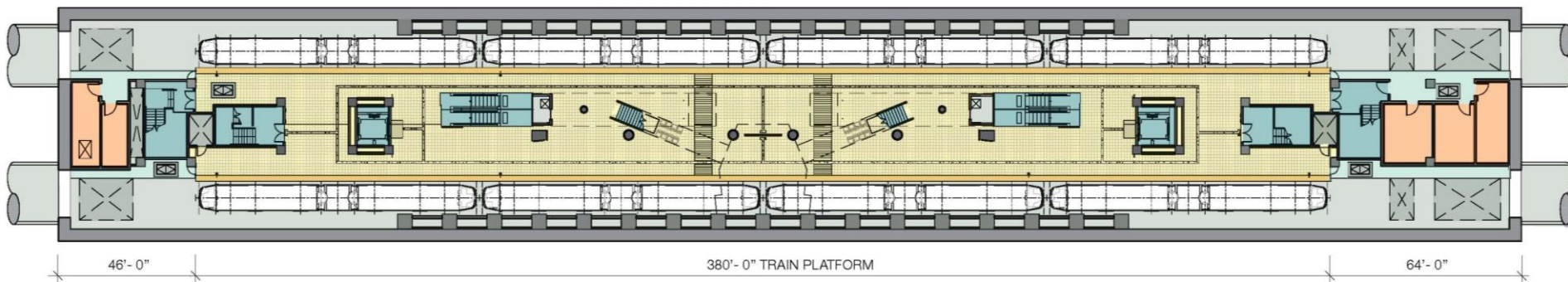




# Floor Plans



**BASEMENT LEVEL 3**



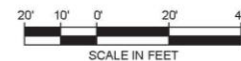
**PLATFORM LEVEL**

**LEGEND**

PLATFORM / LANDING  
EDGE WARNING TILE

ANCILLARY SPACE  
CIRCULATION

SHAFT  
STAIR / ESCALATOR / ELEVATOR





# South Entry





# South Entry Interior Ticketing





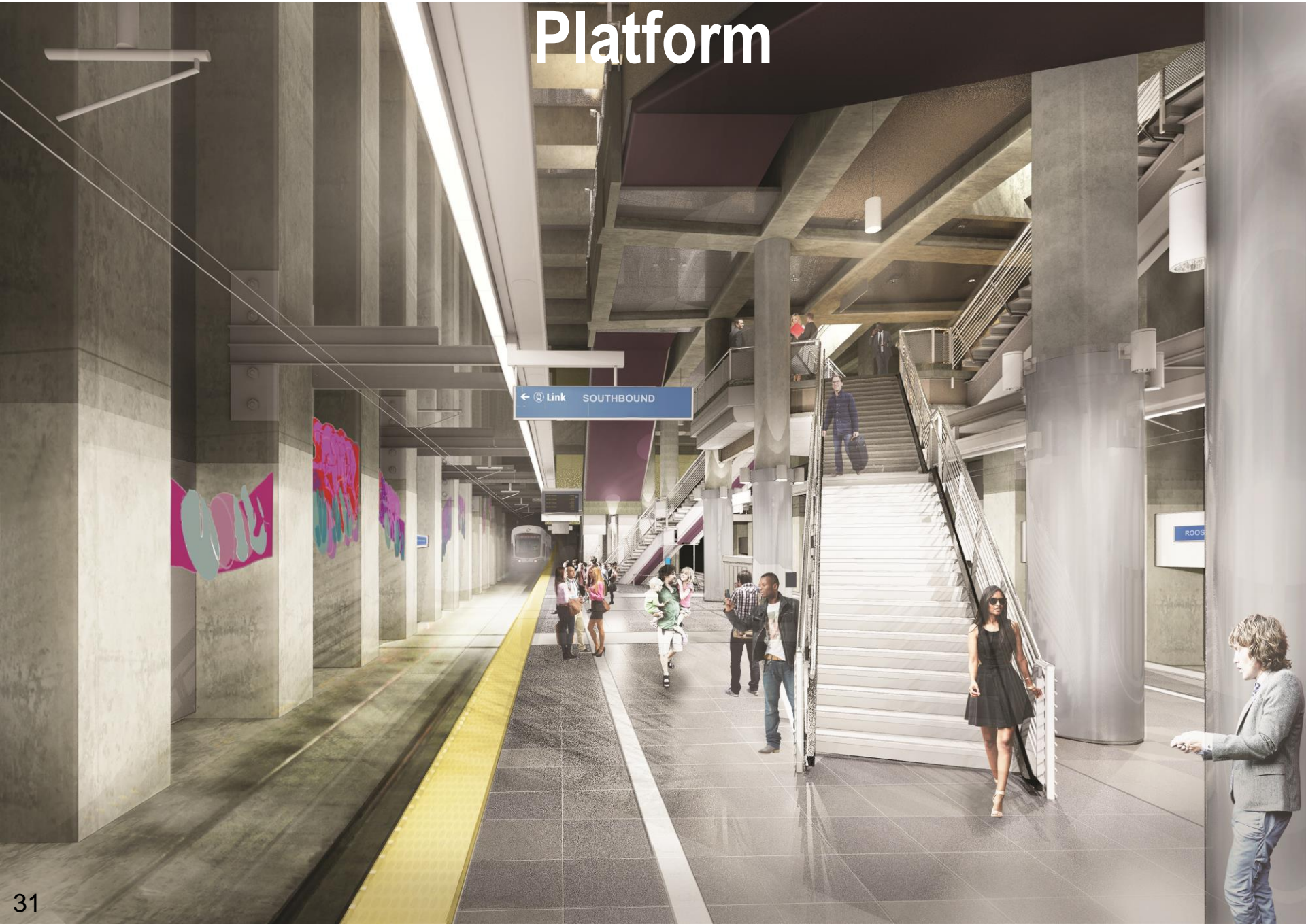
# South Entry Interior

## Escalators/Stairs/Art





# Platform





# Platform





# Mezzanine





# North Entry



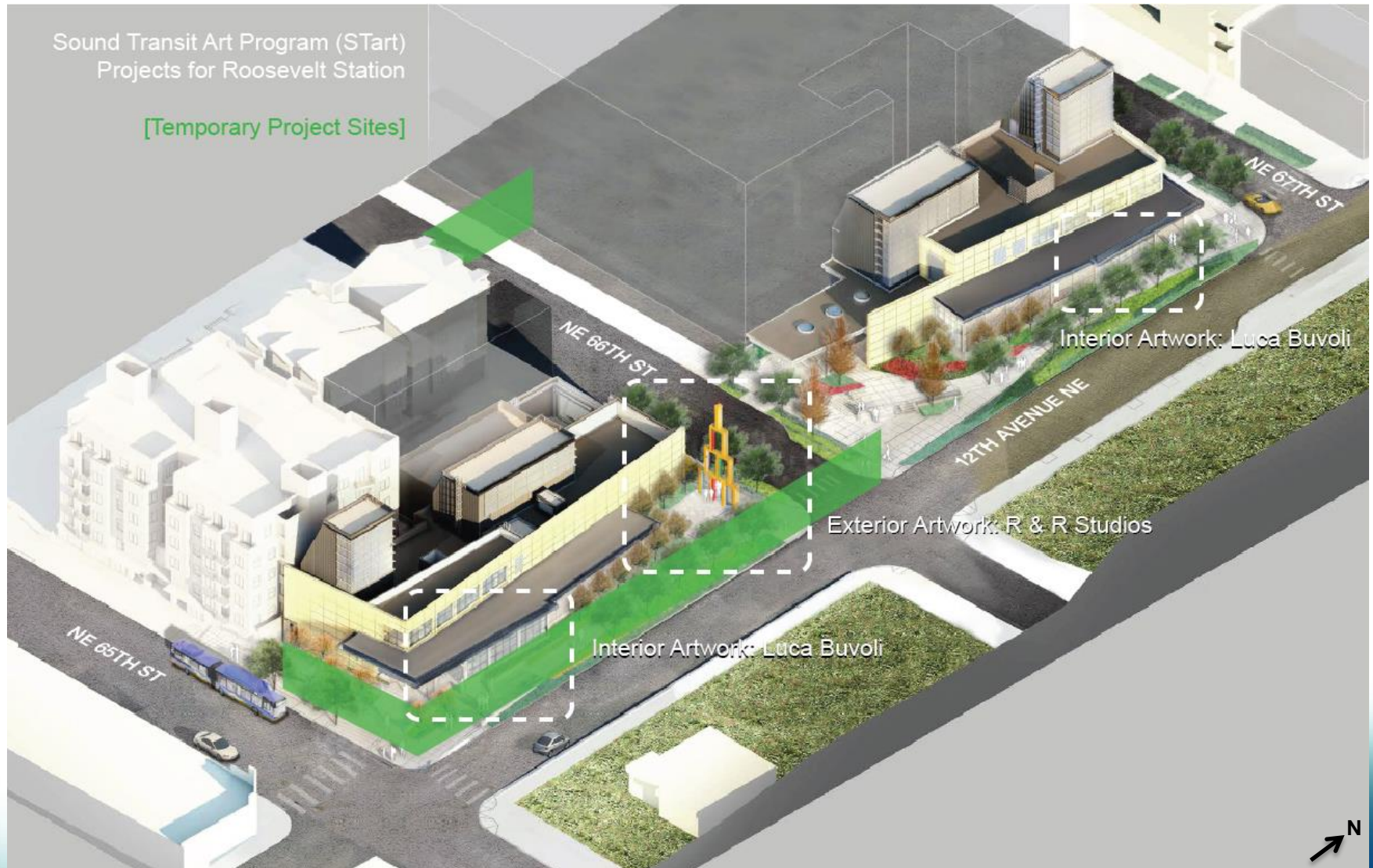


# Birdseye Perspective



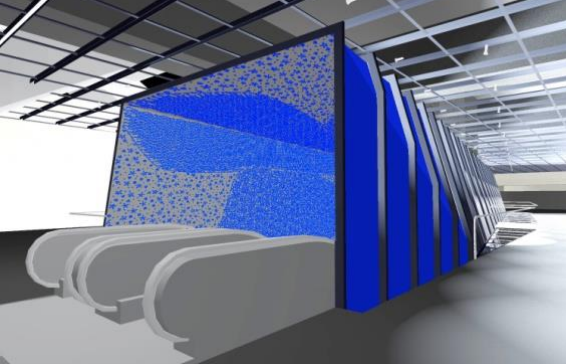


# Art Locations





# Sound Transit Art Program (STart)





# Temporary Art



*The Green Wall at NE 65th and 12th Ave NE:  
a gallery for the neighborhood*



# Temporary Art



*The Green Wall along 12th Ave NE:  
a gallery for the neighborhood*



# Temporary Art





# Exterior Art

## R&R Studios





# Exterior Art

## R&R Studios





# Exterior Art

## R&R Studios





# Exterior Art

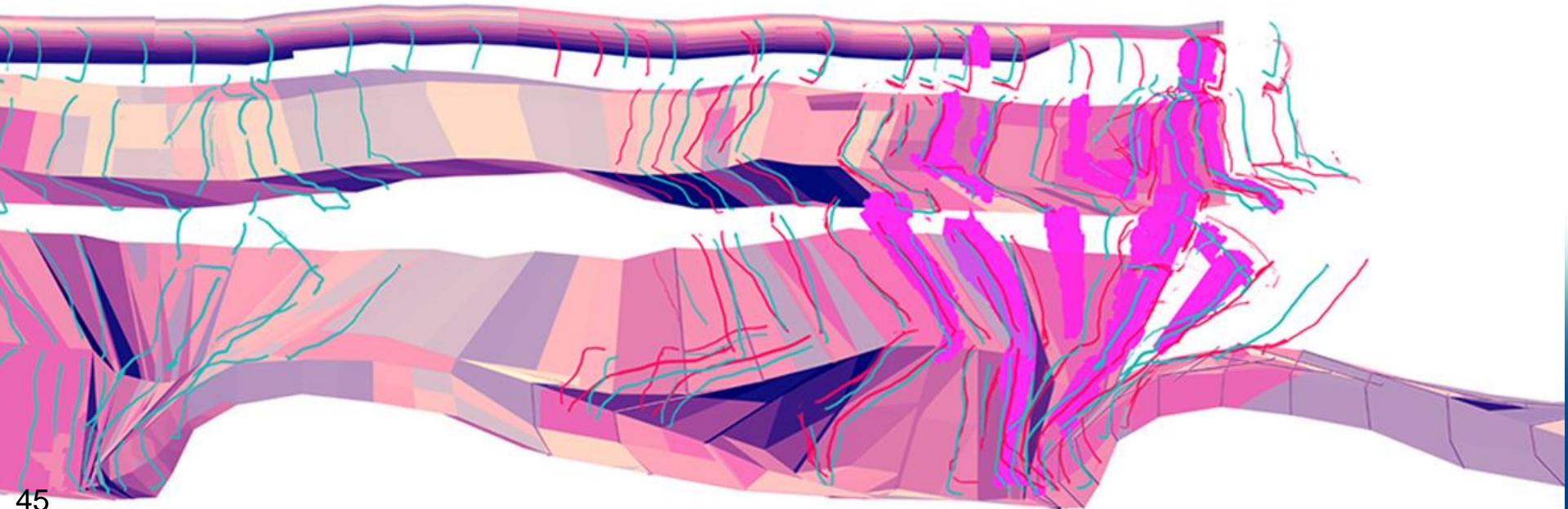
## Looking Northwest





# Interior Art

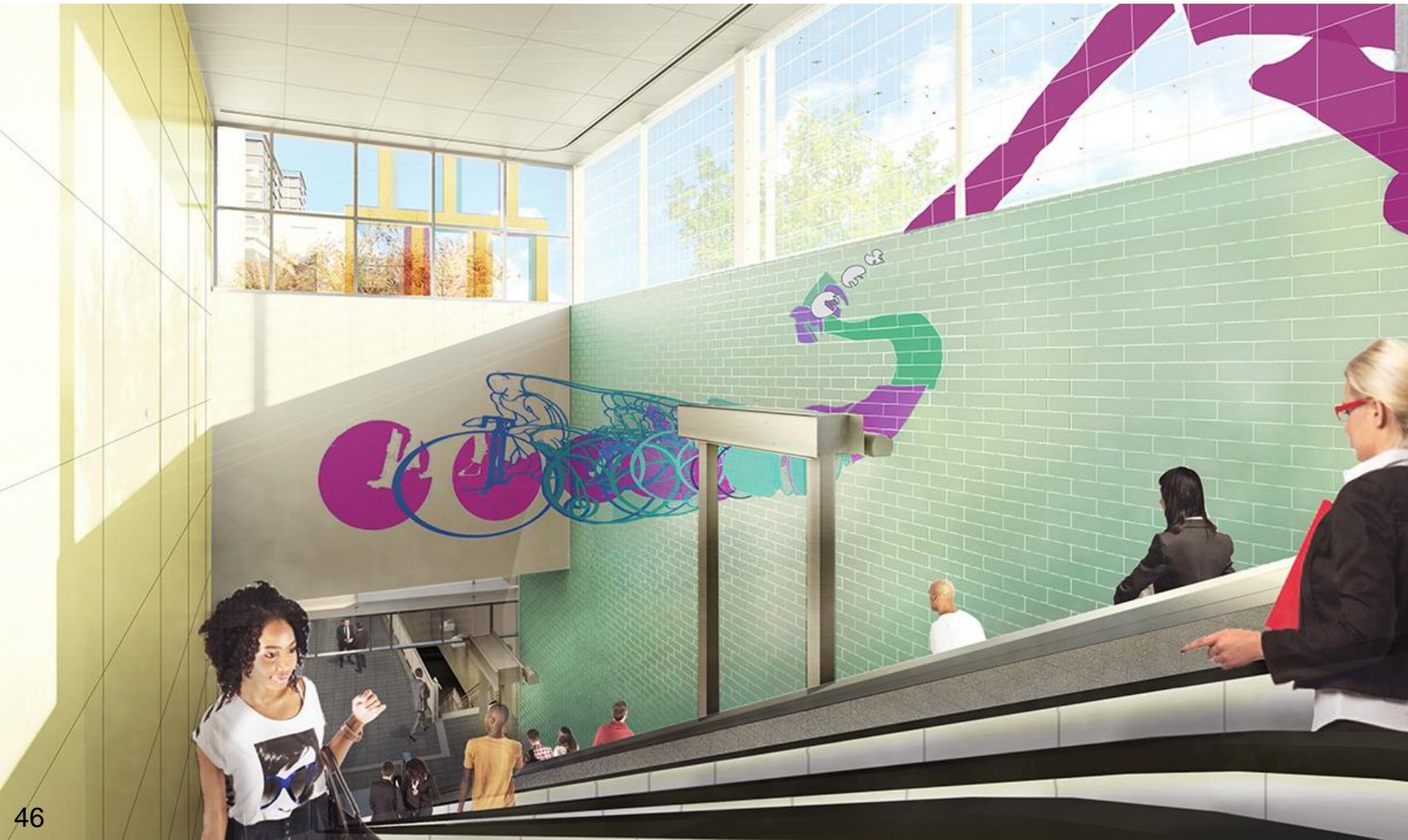
## Luca Buvoli





# Interior Art

## South Entrance Escalators/Stairs



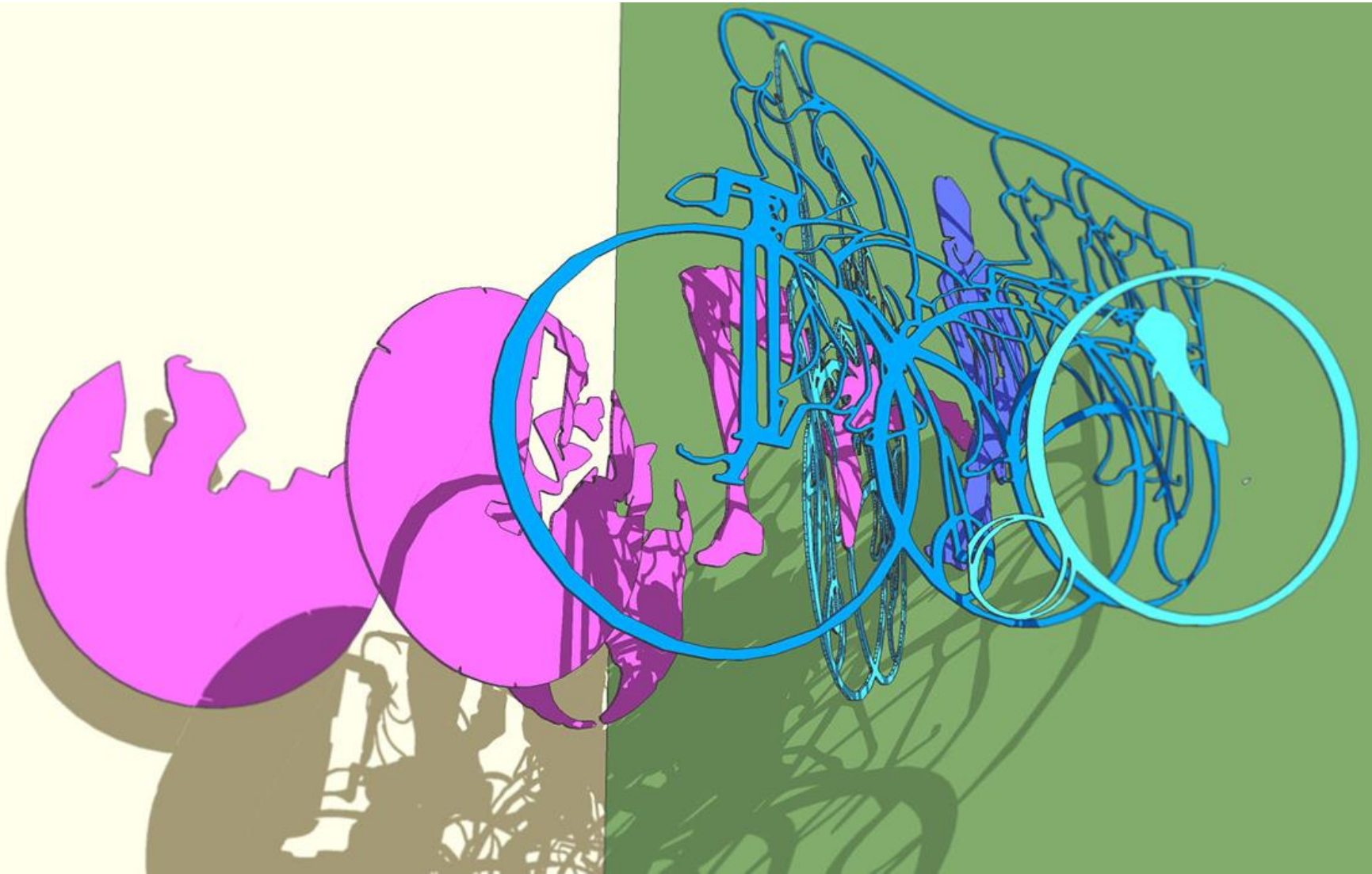


# Interior Art North Entrance





# Interior Art Details



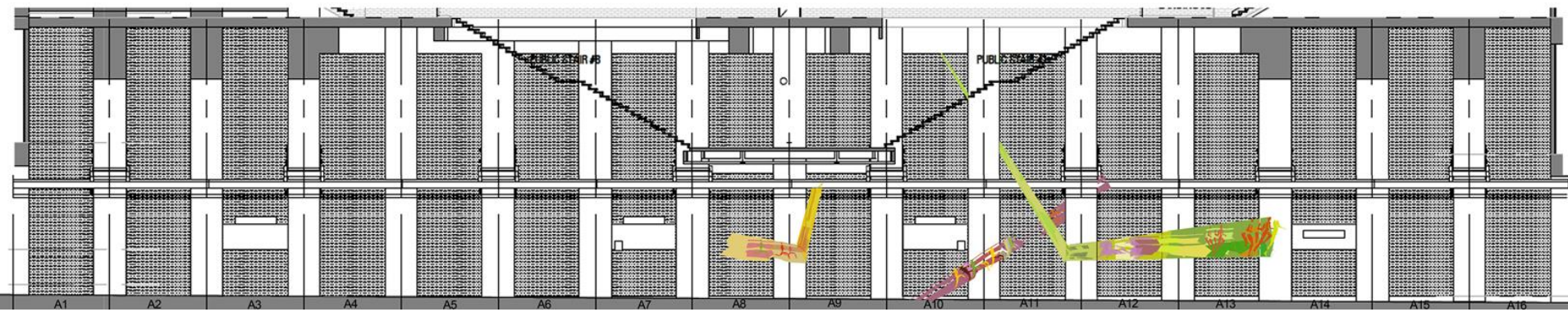


# Interior Art Platform





# Interior Art Platform





# Questions?





# Stay Informed

- Sign Up to Receive Email Updates
  - [www.soundtransit.org/subscribe](http://www.soundtransit.org/subscribe)
- Sound Transit Website
  - [www.soundtransit.org/northlink](http://www.soundtransit.org/northlink)
- Contact Ryan Bianchi:
  - 206.398.5070
  - [northlink@soundtransit.org](mailto:northlink@soundtransit.org)

**ROOSEVELT**

**Northgate Link Extension**

**Construction Alert**

**Restoration work at Northeast 65th Street and 12th Avenue Northeast**

Sound Transit's Roosevelt Station construction contractor is restoring the intersection of Northeast 65th Street and 12th Avenue Northeast. Crews will replace the roadway, curbs, gutters and sidewalks. Work is expected to take up to six months to complete depending on weather.

**1. Northeast Corner**  
Roosevelt Station Construction Site  
NE 65th St  
12th Ave NE  
Work Area

**2. Northwest Corner**  
Roosevelt Station Construction Site  
NE 65th St  
12th Ave NE  
Work Area

**3. Southeast Corner**  
Roosevelt Station Construction Site  
NE 65th St  
12th Ave NE  
Work Area

**4. Southwest Corner**  
Roosevelt Station Construction Site  
NE 65th St  
12th Ave NE  
Work Area

Crews will start in the northeast corner of the intersection. Pedestrian detours, shifting lanes and parking closures are needed to keep drivers, bicyclists and pedestrians safe.

**Why is Sound Transit restoring the intersection?**  
The road needs to be repaired after repeated trenching from previous utility relocation work. Utility relocation work ended in fall 2014. By this summer, crews will return the intersection to its final configuration. Drivers will once again be able to turn left from eastbound Northeast 66th Street to northbound 12th Avenue Northeast.

**Support nearby businesses**  
Parking closures, traffic disruptions and noise are tough on businesses. Please continue your support of businesses on Northeast 65th Street between Roosevelt Way Northeast and Brooklyn Avenue Northeast. Your patience is appreciated.

**For construction issues**  
Normal business hours: 206-398-5300  
Evenings/weekends: 1-888-296-2395  
[northlink@soundtransit.org](mailto:northlink@soundtransit.org)

**For more information**  
Northgate Link Extension  
206-398-5300  
[soundtransit.org/northlink](http://soundtransit.org/northlink)