



Puyallup Station Access Improvement Project

Puyallup City Council

January 13, 2015

 **SOUND TRANSIT**

Planning for the future

WE ARE HERE

Long Range Plan Update
December 2014

**Seek revenue
authority from
Legislature**
January 2015

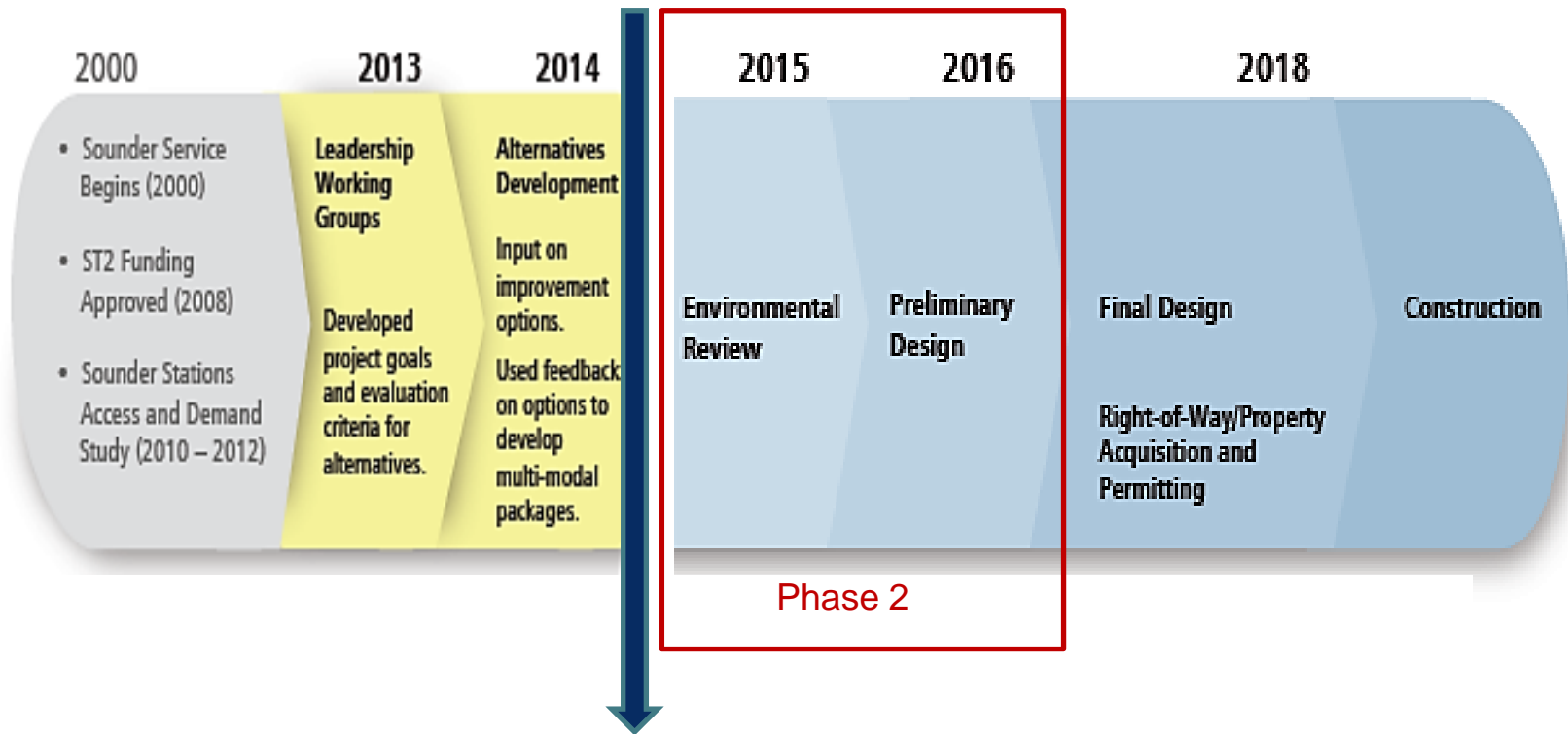
System Planning
(Develop ballot measure)
January 2015-mid 2016

**Potential ballot
measure**
November 2016

Sound Transit Board Seeking Revenue Authority

Source	Rate	Cost
Sales & Use Tax	0.5%	50 cents / \$100 purchase
MVET	0.8%	\$80 on \$10k vehicle
Property Tax	\$.25 per \$1000 assessed value	\$75 annually for a \$300k home

Project Schedule



- August 28, 2014
- ST Board identifies a Preferred package of access improvements

Project update through community drop-in sessions

Who came:

- Over 250 people attended project drop-in sessions.
- Attendees included nearby residents, community members, local business owners, commuters and game day riders.



**PUYALLUP STATION
ACCESS IMPROVEMENTS**

Questions? Visit soundtransit.org/puyallupimprovements or contact Jennifer Lemus at 206-398-5314 or Jennifer.Lemus@soundtransit.org.

Learn about progress on parking and other access improvements for Puyallup Station

- Visit soundtransit.org
- Attend a drop-in session:

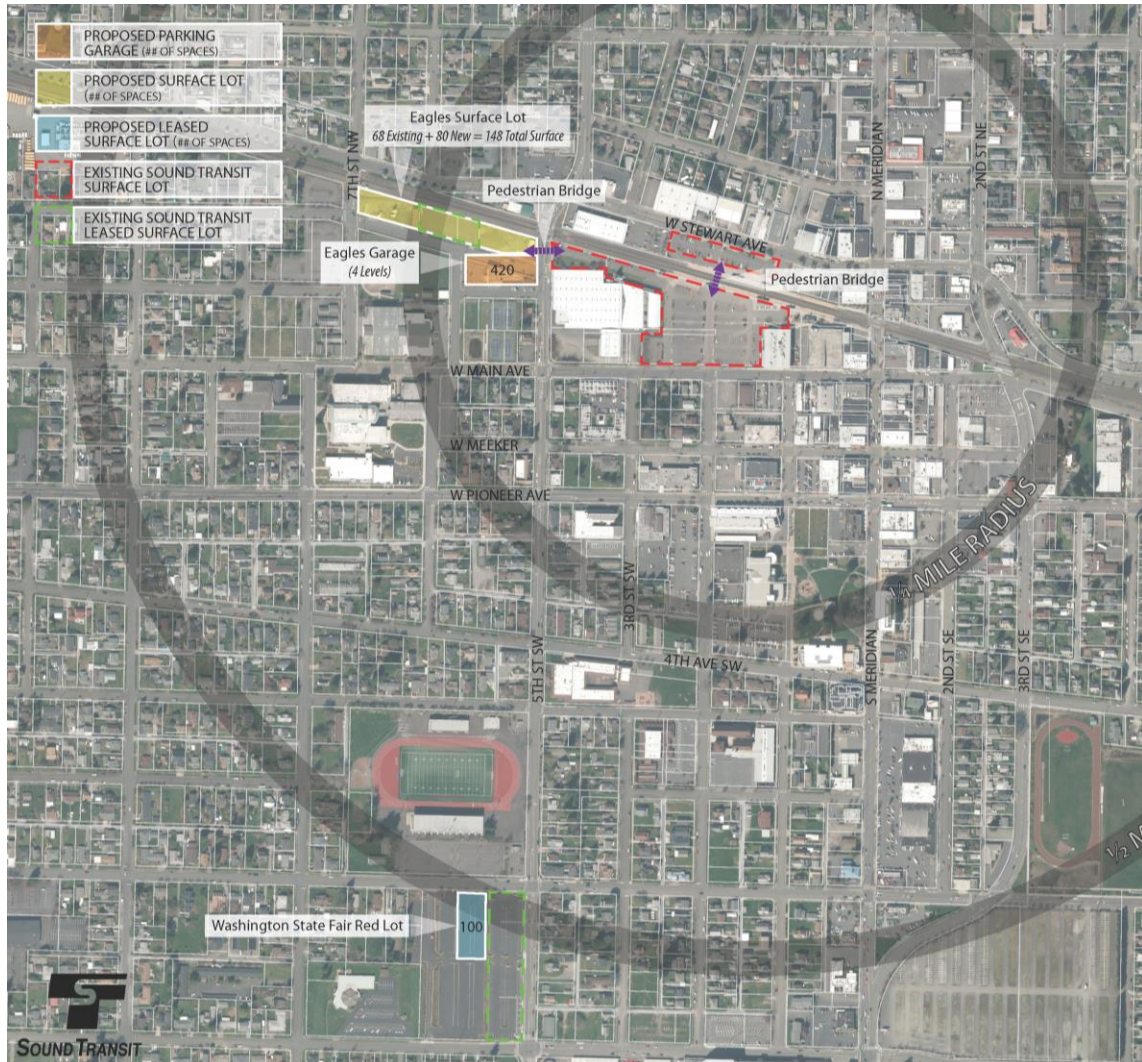
Nov. 19
3:30 - 6:30 p.m.
Puyallup Station (131 W. Main Ave.)
Dec. 3
6 - 8 p.m.
Anthem Coffee (210 W. Pioneer Ave.)
Dec. 6
9:30 a.m. - 4 p.m.
Holiday Market (Pioneer Park Pavilion)
Dec. 14
10 - 11:30 a.m.
Puyallup Station (131 W. Main Ave.)

 **SOUNDTRANSIT**
RIDE THE WAVE

What we heard:

- Strong support for the project and desire to get it done as soon as possible
- Strong support for installing a pedestrian bridge over the railroad tracks for improved safety, convenience and flexibility.
- Concerns included increased traffic, potential impacts to nearby businesses and whether or not the number of parking stalls will sufficiently meet future demand.

City of Puyallup Recommendation



City Preference

- 420 net new garage spaces or less at the Eagles garage
- Additional ST parking along northside of 3rd Ave NW and the Red Lot
- Total desired garage spaces and surface parking = 568 total spaces
- Pedestrian crossing over 5th Street NW to the garage and over RR tracks at station

Puyallup: 3 Garage Options



- Puyallup Council preference for approximately **568** total spaces
- Puyallup parking options range from 550 to 660 total spaces

OPTION A: 3 1/2 Stories

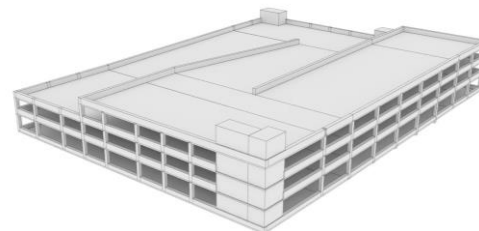
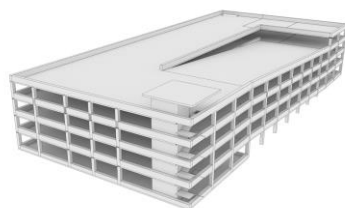
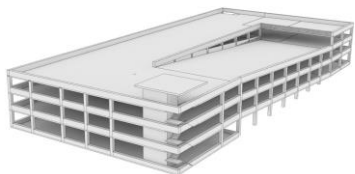
- 77 New Surface
- 68 Existing Surface
- 405 Garage spaces
- **550 Total spaces**
- **\$ 27.5 M**

OPTION B: 4 1/2 Stories

- 77 New Surface
- 68 Existing Surface
- 515 Garage spaces
- **660 Total spaces**
- **\$ 33.1 M**

OPTION C: 2 1/2 to 3 1/2 Stories

- 22 New Surface
- 68 Existing Surface
- 515 Garage spaces
- **605 Total spaces**
- **\$ 33.1 M**



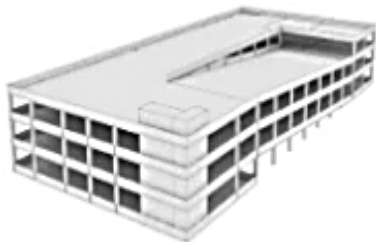
Puyallup: 3 Garage Options



- Puyallup parking options range from 550 to 604 total spaces by the Eagles

OPTION A: 3 ½ Stories

- 77 New Surface
- 405 Garage spaces
- **482 Total new spaces**
- **\$27.5 Million**



OPTION B: 4 ½ Stories

- 77 New Surface
- 515 Garage spaces
- **592 Total new spaces**
- **\$33.1 Million**



OPTION C: 2 ½ to 3 ½ Stories

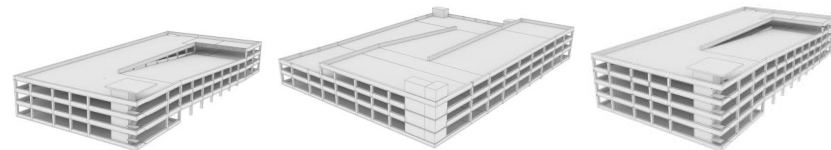
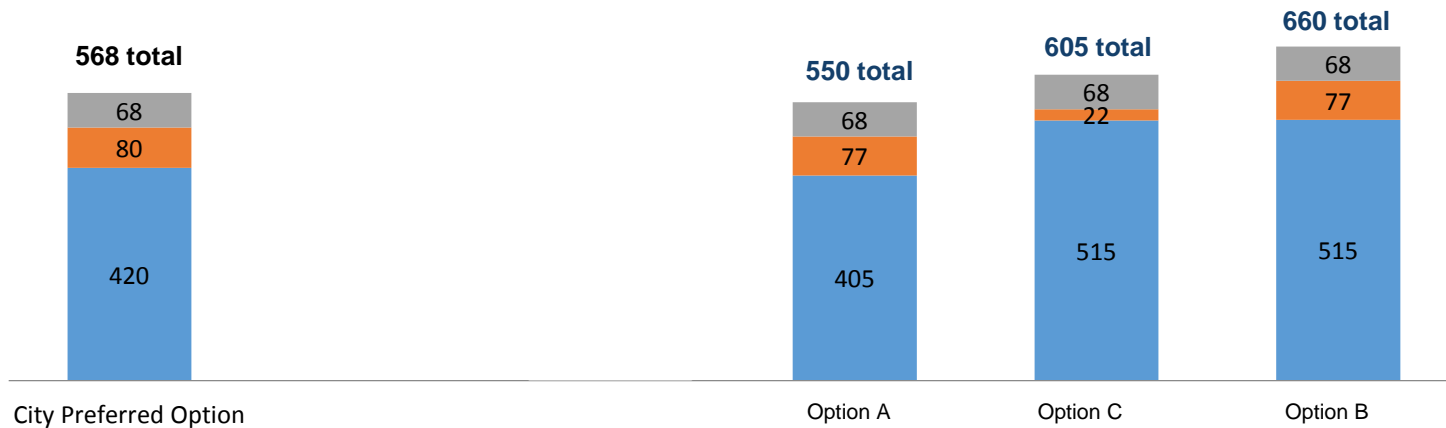
- 22 New Surface
- 514 Garage spaces
- **536 Total new spaces**
- **\$33.1 Million**



Total number of parking spaces by option

Comparison of total spaces

■ Garage Spaces ■ Increase in Surface Spaces ■ Existing Leased Spaces



Garage Description	Garage Spaces	Increase in Surface Spaces	Existing Leased Spaces	Total Parking at Eagles
2.5 stories (Option A)	405	77	68	550
2.5 to 3.5 stories (Option C)	515	22	68	605
3.5 stories (Option B)	515	77	68	660
City Preference	420	80	68	568

Garage design to be determined in 2016

Examples of the **numerous** options available for garage design.



Visual Simulations (View from W. Stewart Ave and 5th ST NW)



OPTION A: 3 ½ Stories

- 77 New Surface
- 68 Existing Surface
- 405 Garage spaces
- **550 Total spaces**



OPTION B: 4 ½ Stories

- 77 New Surface
- 68 Existing Surface
- 515 Garage spaces
- **660 Total spaces**



OPTION C: 2 ½ to 3½ Stories

- 22 New Surface
- 68 Existing Surface
- 515 Garage spaces
- **605 Total spaces**

Conceptual drawings — For Discussion Only

Visual Simulations (View from West Main and 5th Street)



OPTION A: 3 ½ Stories

- 77 New Surface
- 68 Existing Surface
- 405 Garage spaces
- **550 Total spaces**



OPTION B: 4 ½ Stories

- 77 New Surface
- 68 Existing Surface
- 515 Garage spaces
- **660 Total spaces**



OPTION C: 2 ½ to 3 ½ Stories

- 22 New Surface
- 68 Existing Surface
- 515 Garage spaces
- **605 Total spaces**

Conceptual drawings - For Discussion Only

Visual Simulations (View from West Main and 6th Street)



OPTION A: 3 ½ Stories

- 77 New Surface
- 68 Existing Surface
- 405 Garage spaces
- **550 Total spaces**



OPTION B: 4 ½ Stories

- 77 New Surface
- 68 Existing Surface
- 515 Garage spaces
- **660 Total spaces**

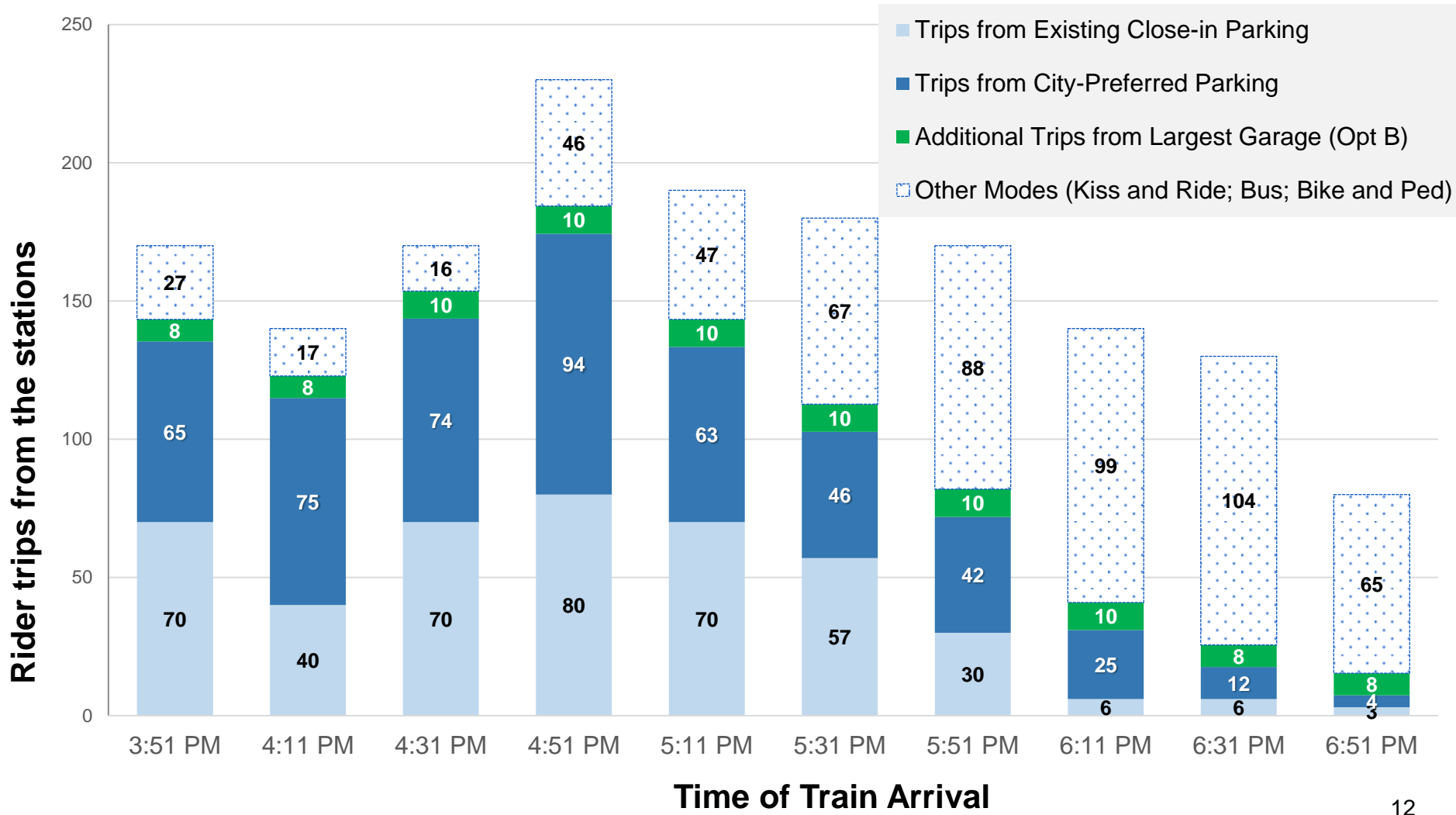


OPTION C: 2 ½ to 3 ½ Stories

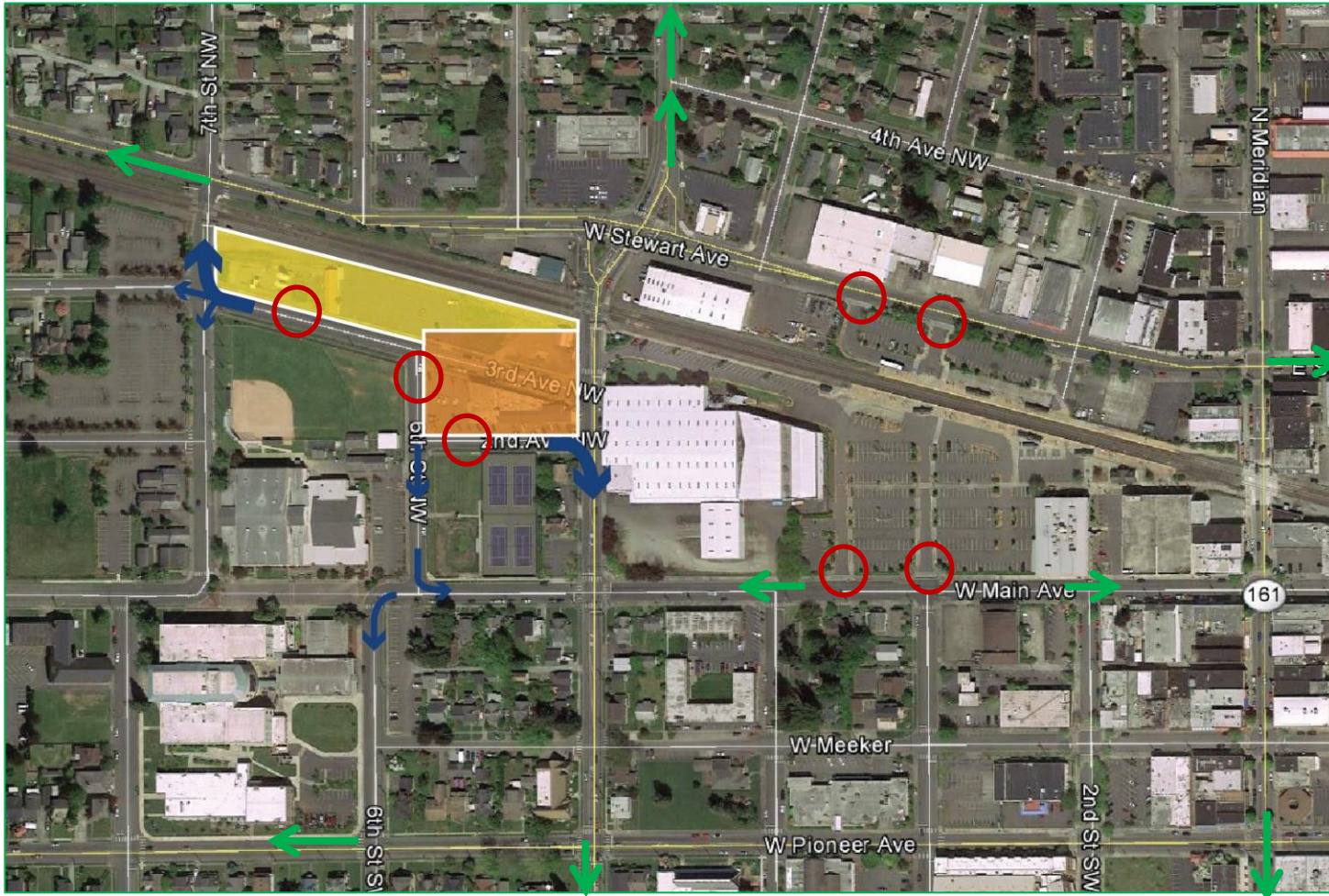
- 22 New Surface
- 68 Existing Surface
- 515 Garage spaces
- **605 Total spaces**




Conceptual drawings – For Discussion Only

How many more trips are generated by parking at the Eagles?



Primary traffic routes from close-in parking



-  Parking exits
-  Routes from Eagles Parking
-  Primary routes from Station area

More Traffic Analysis (Coming soon)

- Looking at Year 2035
- Analyzing cars, buses and pedestrians
- Coordinating with City Staff on ways to minimize local traffic impacts

Next Council Presentation

1. Future Updates
 - Pedestrian sidewalk and bike improvements
 - Traffic management
 - SR 410 interchange

2. Council discussion on pedestrian bridge design options

A close-up, low-angle shot of a white Sound Transit bus. The bus features a large, stylized wave graphic in shades of blue and teal that curves across its side. Several dark, rectangular windows are visible along the top edge of the bus. The background is a clear blue sky.

ST **SOUNDTRANSIT**
RIDE THE WAVE

SOUND