



SOUNDTRANSIT Ridership Summary

May 2013

Boardings Mode	Monthly Total Boardings			Annual YTD Boardings			Average Weekday Boardings			Average Saturday Boardings			Average Sunday Boardings		
	May 2013	May 2012	% Change	2013	2012	% Change	May 2013	May 2012	% Change	May 2013	May 2012	% Change	May 2013	May 2012	% Change
ST Express regional bus	1,448,187	1,372,349	+ 5.5%	6,769,370	6,259,167	+ 8.2%	58,361	54,966	+ 6.2%	22,366	22,880	- 2.2%	14,956	14,314	+ 4.5%
Souder commuter rail	263,451	242,212	+ 8.8%	1,225,917	1,108,164	+ 10.6%	11,603	10,770	+ 7.7%	2,130*	1,063*	+ 100.4%	2,020*	2,106*	- 4.1%
Tacoma Link light rail	91,445	95,780	- 4.5%	441,212	443,810	- 0.6%	3,686	3,807	- 3.2%	1,664	2,185	- 23.8%	740	657	+ 12.7%
Central Link light rail	785,853	756,835	+ 3.8%	3,557,476	3,240,570	+ 9.8%	27,428	26,615	+ 3.1%	23,844	22,904	+ 4.1%	17,412	15,937	+ 9.3%
Paratransit	5,565	5,613	- 0.9%	26,473	27,028	- 2.1%	180	181	- 0.9%	180	181	- 0.9%	180	181	- 0.9%
System Total	2,594,501	2,472,789	+ 4.9%	12,020,448	11,078,739	+ 8.5%	101,257	96,340	+ 5.1%	48,586	48,415	+ 0.4%	34,499	31,931	+ 8.0%

ST Express and System Total ridership includes downtown Seattle only ridership (formerly Ride Free Area) as of October 2012.

Paratransit daily boardings are assumed equal between weekdays, Saturdays and Sundays.

* Souder event service

Ridership Analysis

May 2013: 22 weekdays, 4 Saturdays, 5 Sundays for ST Express, Central Link, Souder and Tacoma Link

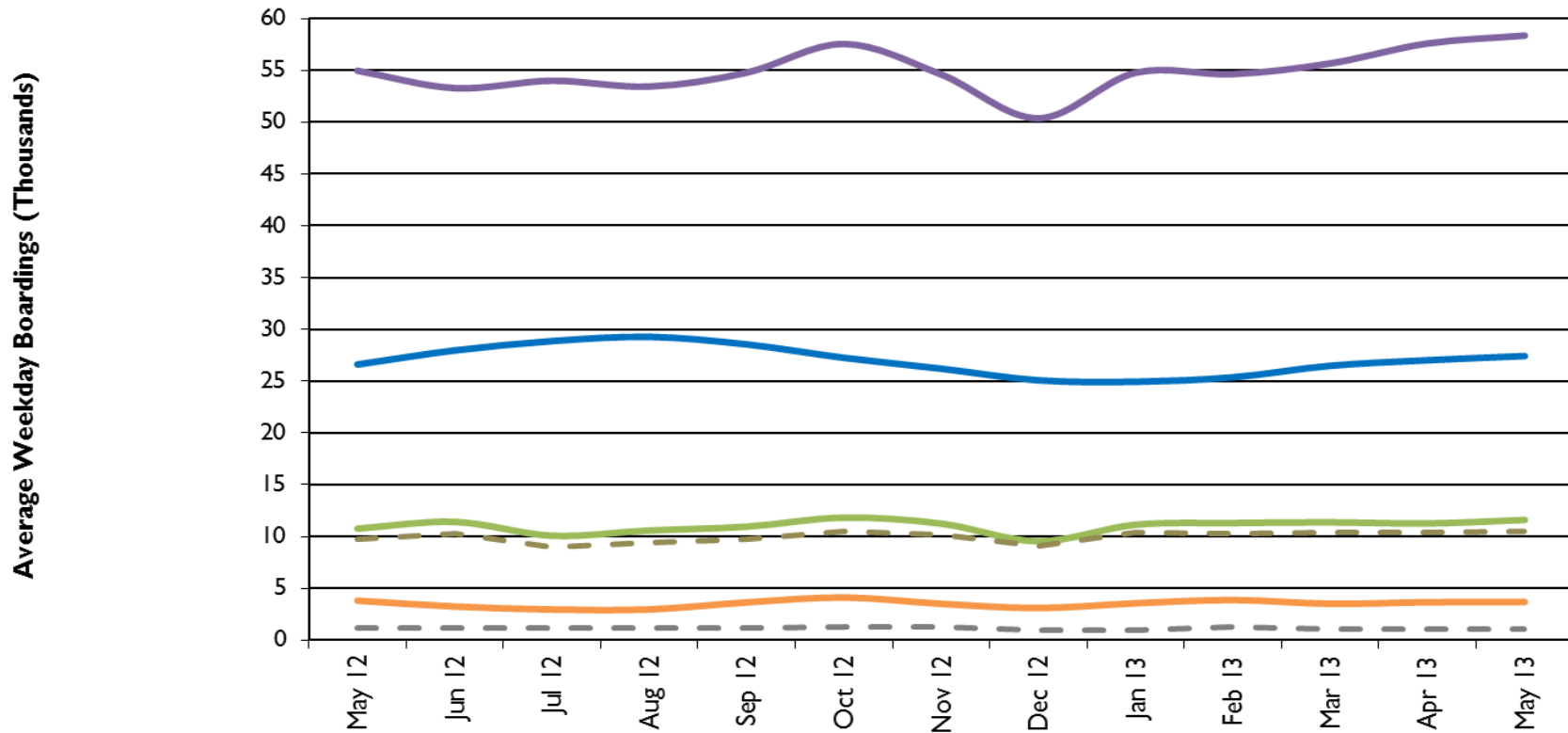
All Sound Transit modes experienced ridership growth during May 2013 except Tacoma Link and Paratransit. The number of weekdays, Saturdays, and Sundays remained the same as in May 2012. Downtown Seattle local boardings continue to be included in the ST Express totals since the Ride Free Area was discontinued in October 2012. On ST Express, routes 577 and 578 showed strong ridership increases over May 2012 with 18% more weekday, 14% more Saturday, and 120% more Sunday boardings. Total Souder commuter train ridership was up 8%. Average weekday Souder boardings decreased by 5% on the North Line and increased by 9% on the south line. Two afternoon trains were cancelled on the south line. On Central Link, total boardings increased by 4%, with May year-to-date boardings at 10% over 2012. Tacoma Link ridership was slightly down possibly due to the Tacoma Convention Center having about half the number of events this May over May 2012.

SOUNDTRANSIT Ridership Summary

May 2013

Trends

Sound Transit Boardings by Mode



	May-12	Jun-12	Jul-12	Aug-12	Sep-12	Oct-12	Nov-12	Dec-12	Jan-13	Feb-13	Mar-13	Apr-13	May-13
ST Express regional bus	54,966	53,289	54,005	53,442	54,778	57,555	54,609	50,375	54,772	54,640	55,671	57,591	58,361
Central Link light rail	26,615	27,971	28,870	29,275	28,549	27,254	26,205	25,084	24,938	25,370	26,485	27,019	27,428
Sounder commuter rail	10,770	11,417	10,079	10,588	10,952	11,828	11,250	9,552	11,142	11,305	11,373	11,267	11,603
Sounder South Line	9,703	10,225	8,937	9,415	9,738	10,521	10,164	9,034	10,415	10,272	10,406	10,397	10,538
Sounder North Line	1,115	1,188	1,139	1,170	1,212	1,304	1,264	940	997	1,287	1,013	1,004	1,061
Tacoma Link light rail	3,807	3,247	2,957	2,968	3,645	4,119	3,507	3,096	3,565	3,870	3,512	3,656	3,686