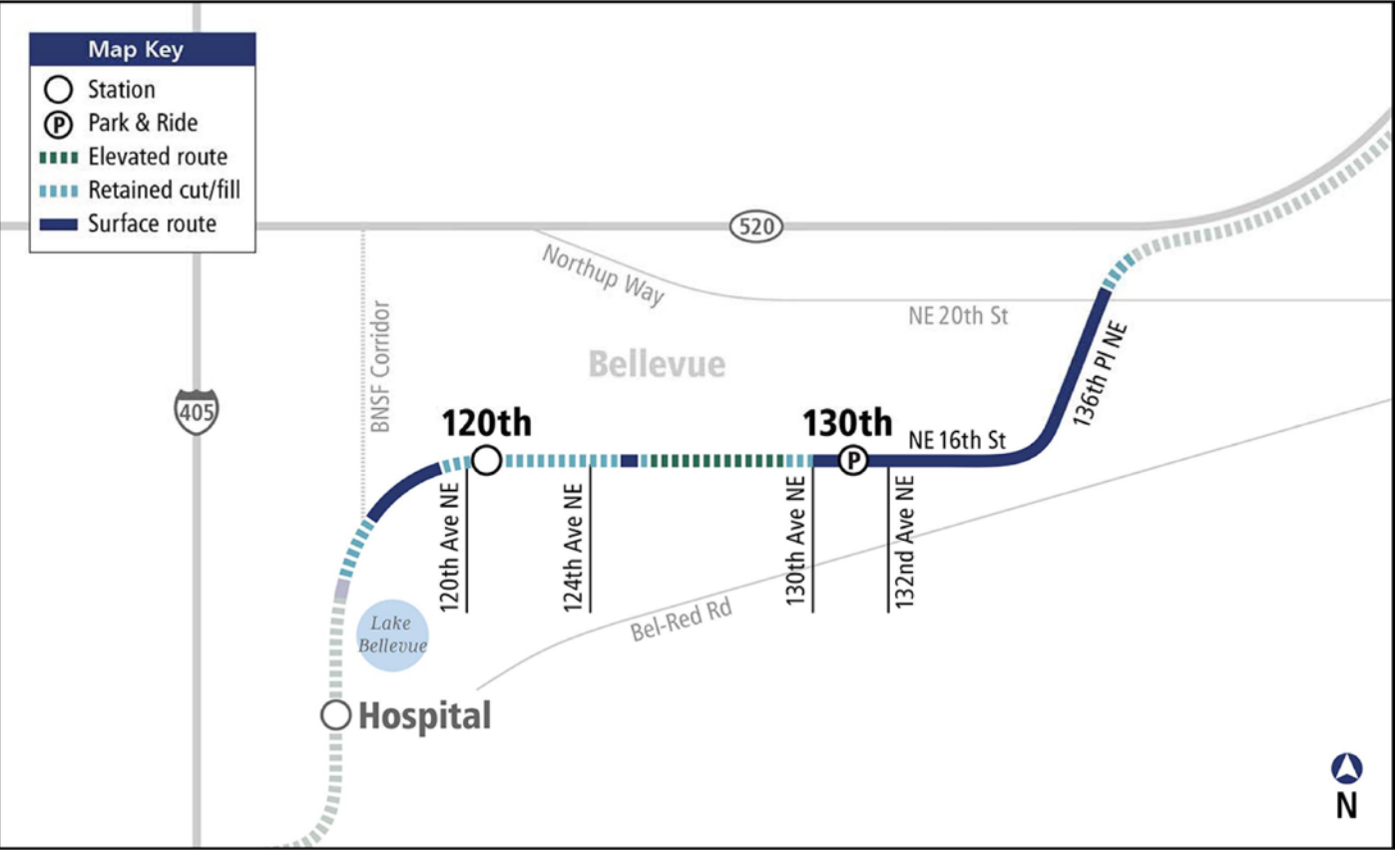




Spring District/120th Station

Citizens Advisory Committee (CAC) April 6, 2016

Spring District /120th Station



BelRed Alignment

Spring District /120th Station



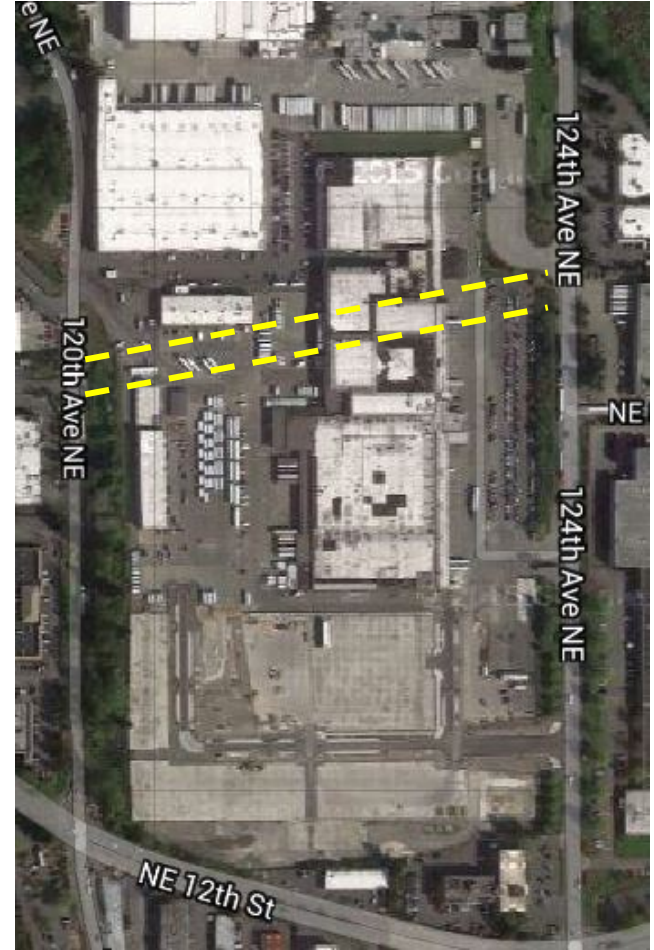
- LEGEND**
- BUS ROUTE
 - BICYCLE ROUTE
 - BICYCLE LANE
 - PROPOSED NEW SIDEWALKS
 - LIGHT RAIL TRACKS
 - STATION
 - PATRON CATCHMENT AREA
 - FUTURE DEVELOPMENT

Neighborhood Context

Spring District Site Prior to Development

Existing: Industrial/Warehouse Use

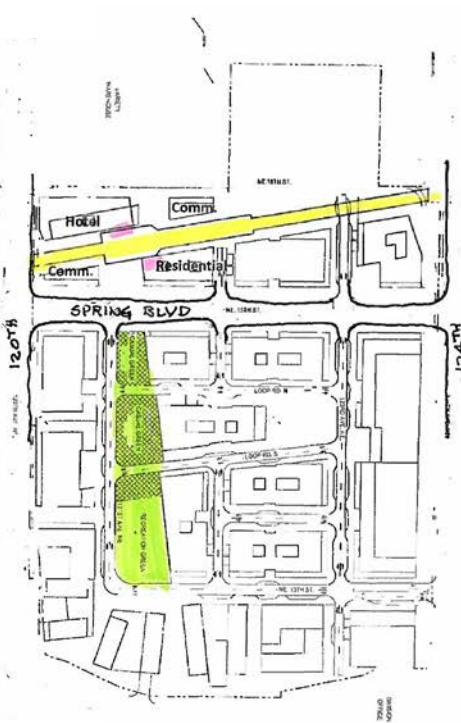
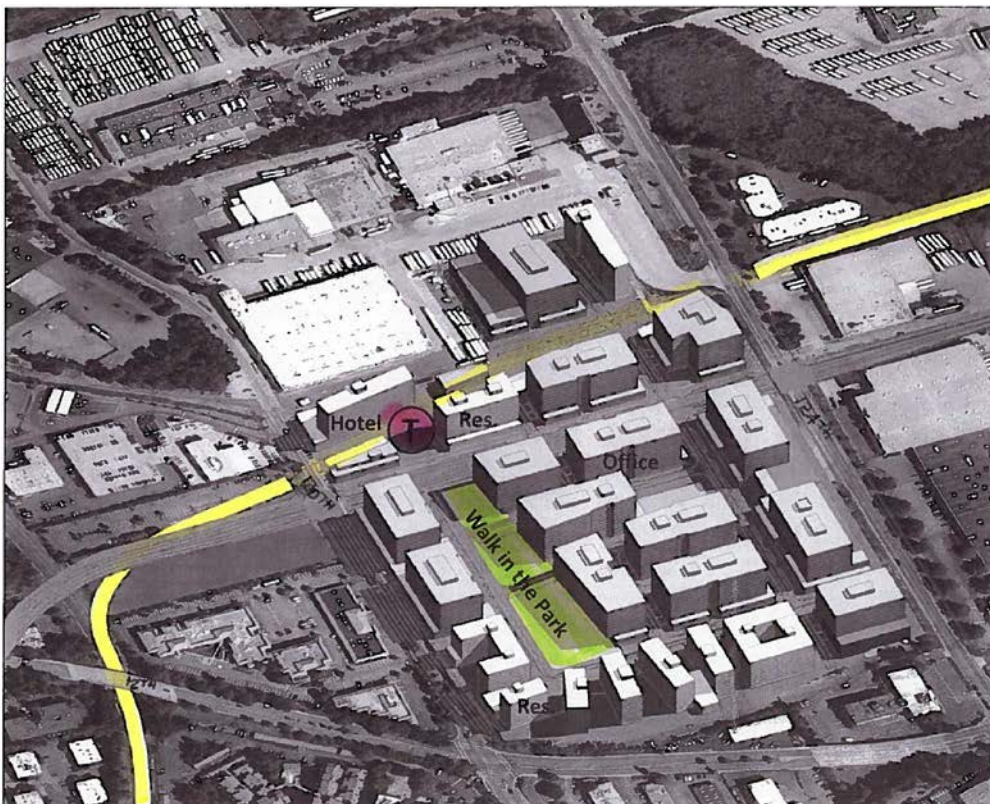
Planned: Residential, Office, Commercial



Station to fit within context of the future development.

Site improvements will accompany construction of adjacent buildings.

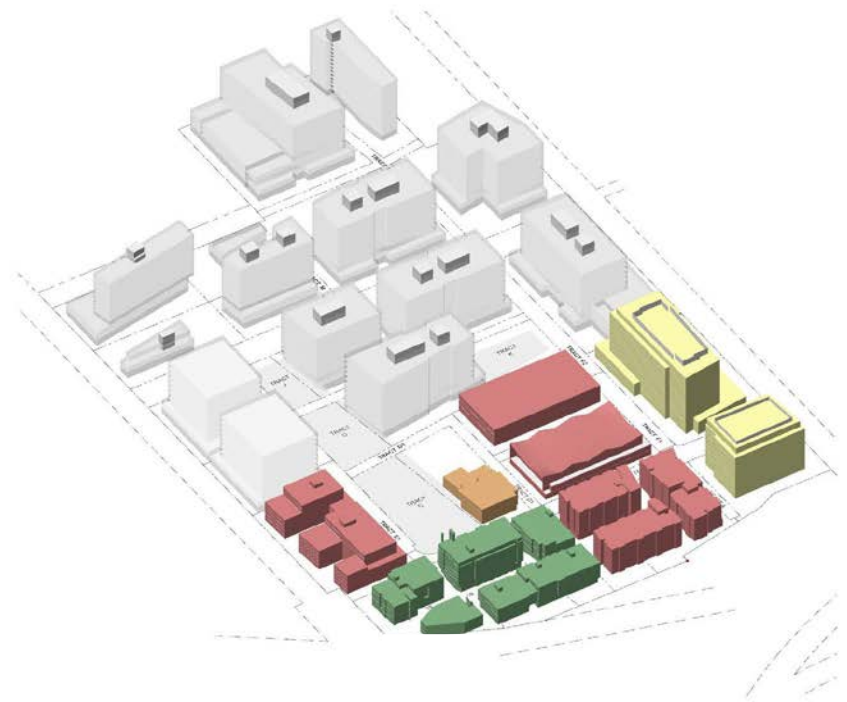
Interim pathways to connect station to existing street(s).





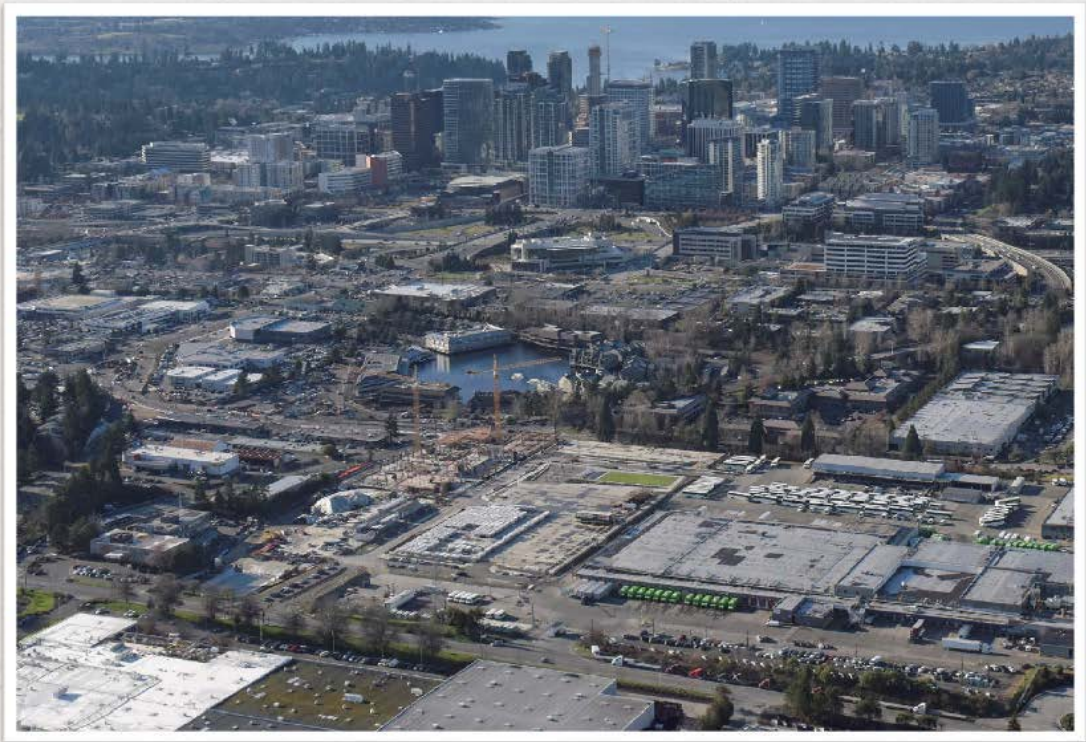
THE **SPRING** DISTRICT

Spring District /120th Station

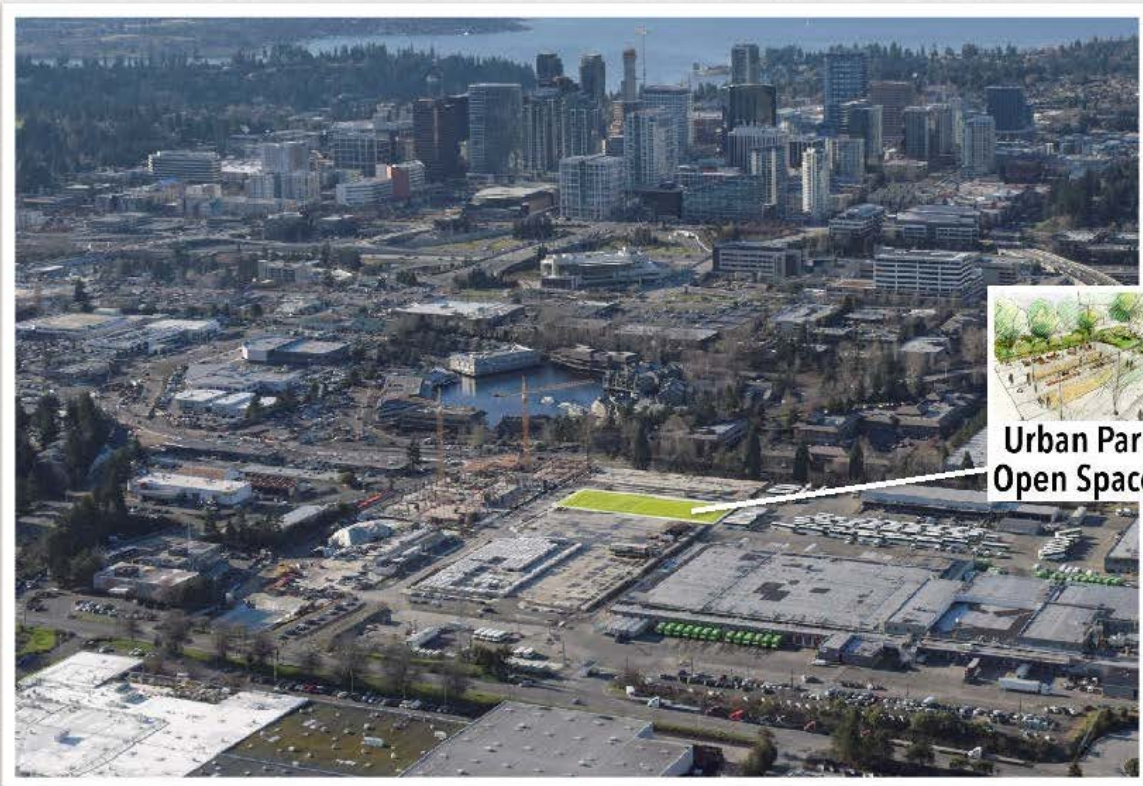


Site Context

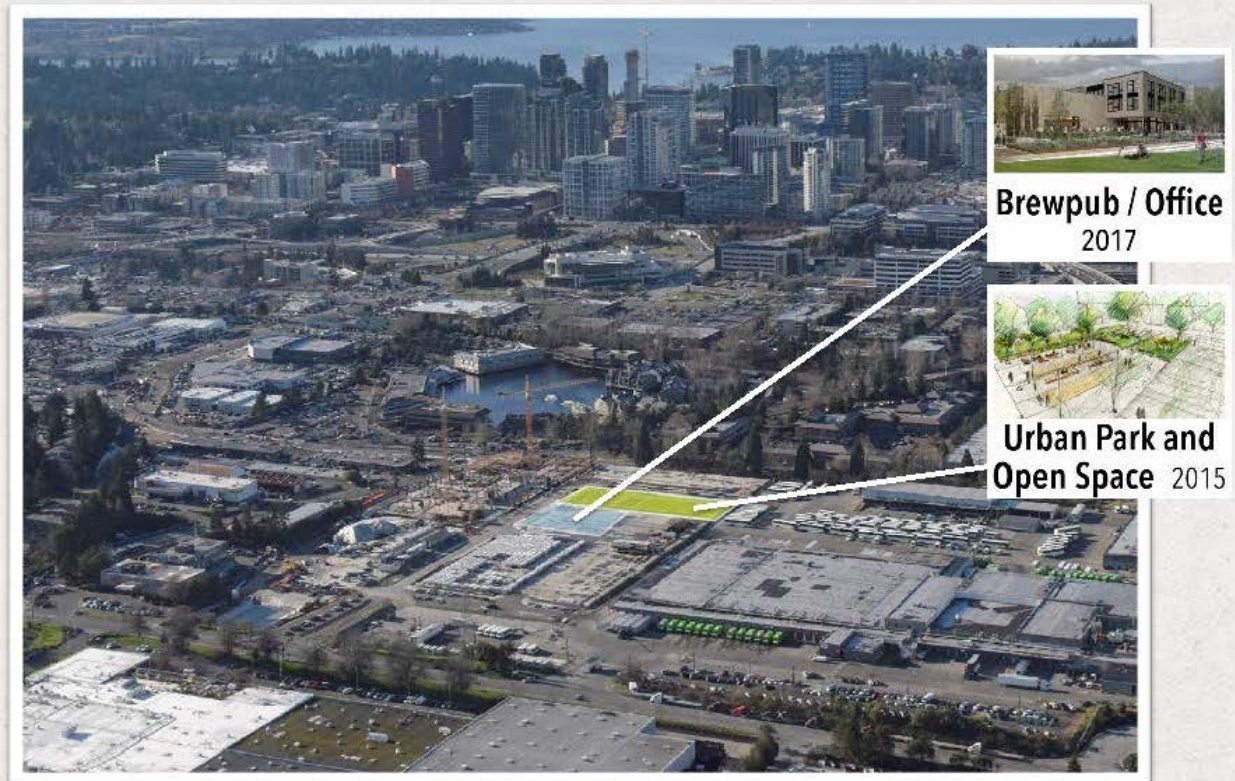
DEVELOPMENT MOMENTUM



DEVELOPMENT MOMENTUM



DEVELOPMENT MOMENTUM



DEVELOPMENT MOMENTUM



Apartments
309 Units 2017



Brewpub / Office
2017



**Urban Park and
Open Space** 2015



DEVELOPMENT MOMENTUM



Apartments
309 Units 2017

Brewpub / Office
2017

Office - Block 24
160,734 sq ft 2018

Urban Park and Open Space 2015

DEVELOPMENT MOMENTUM



Apartments
309 Units 2017



Brewpub / Office
2017



**Urban Park and
Open Space** 2015



Office - Block 24
160,734 sq ft 2018



Office - Block 16
311,233 sq ft 2017



DEVELOPMENT MOMENTUM



DEVELOPMENT MOMENTUM



Spring District /120th Station



Site Context

Spring District /120th Station



Site Context

Spring District /120th Station



Site Context



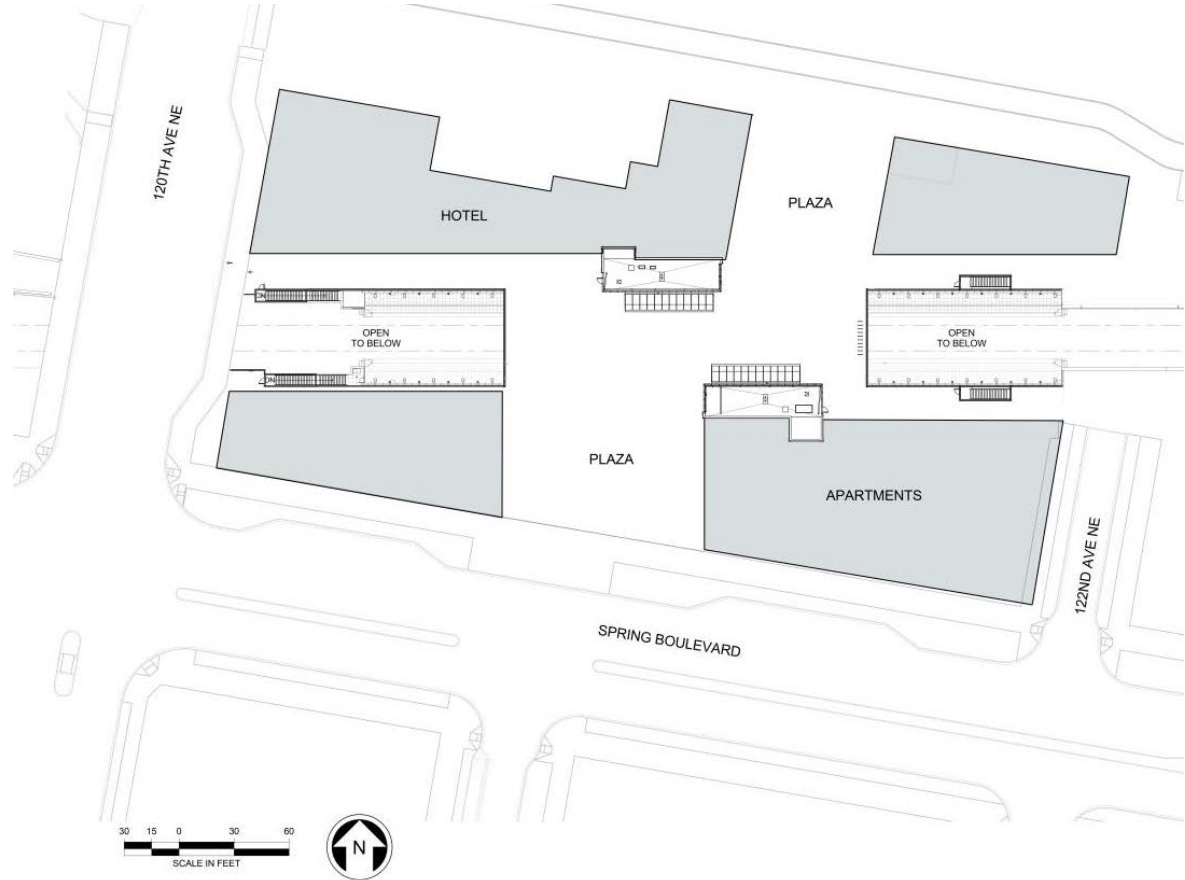
Site Context

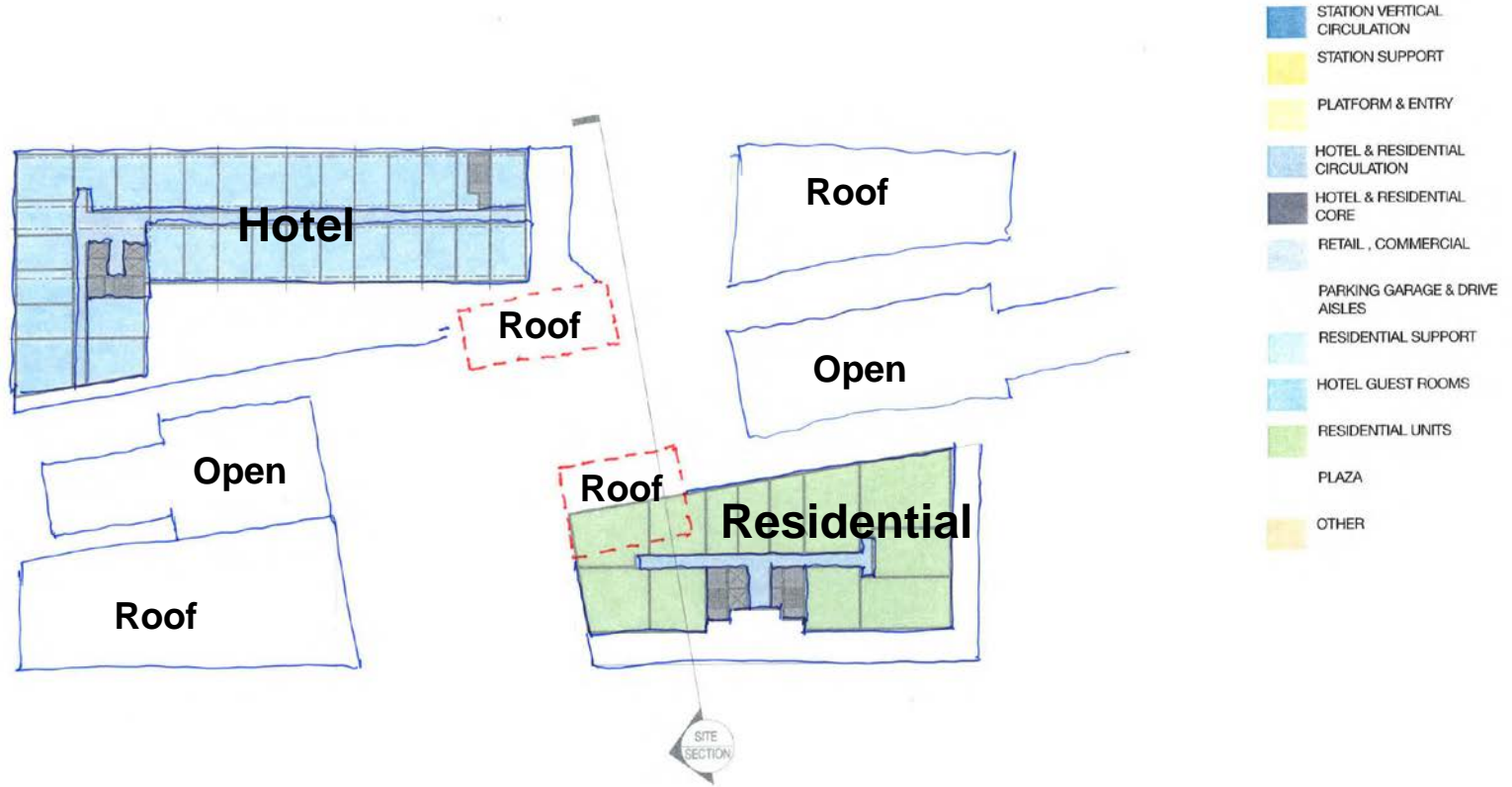
Design Program:

Station entrances “within” future Spring District buildings.

Large plaza spanning station trench – 160 ft -200 ft wide.

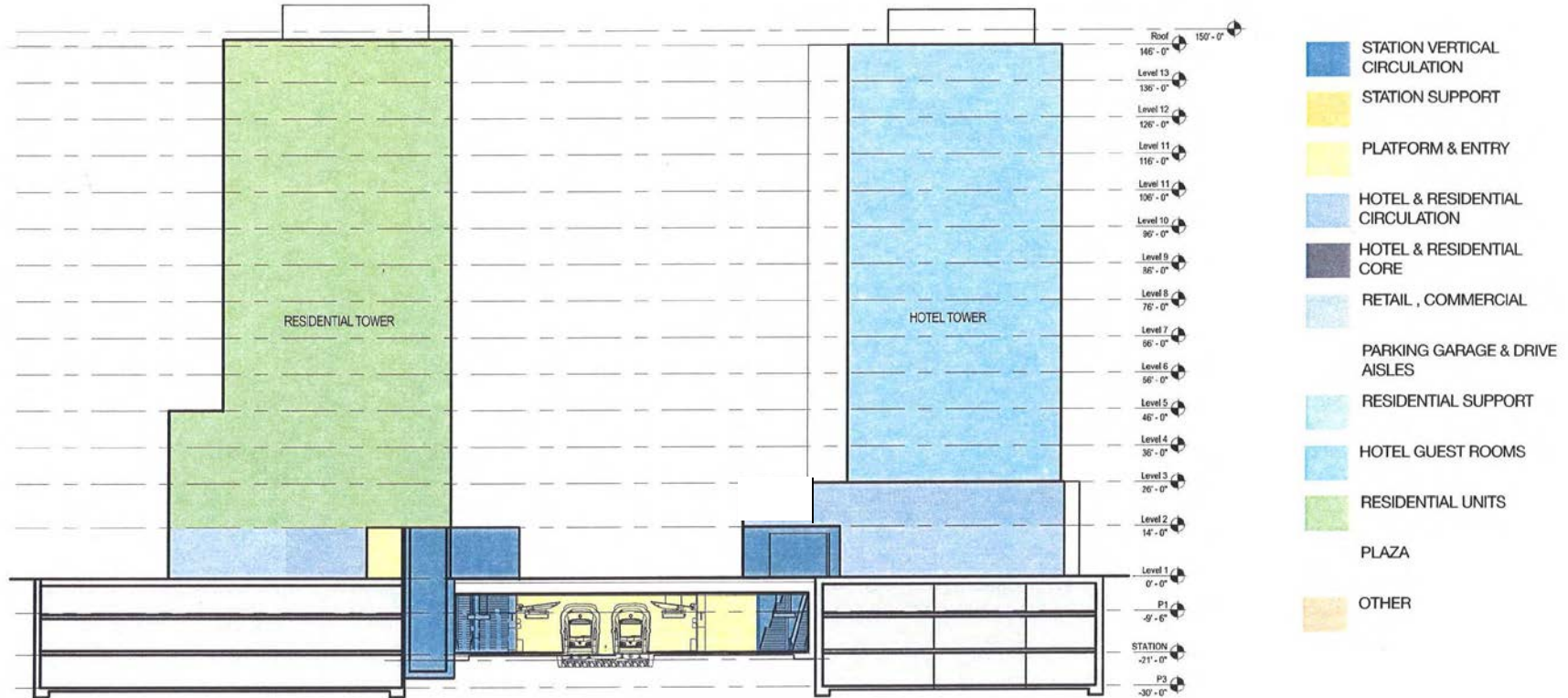
Interim site condition until Spring District buildings and Spring Blvd built.





Station Roof Plan (Spring Dist. Upper Flrs.)

Spring District /120th Station



Site Section

Design Program:

Station entrances “within” future Spring District buildings.

Large plaza spanning station trench – 160 ft -200 ft wide.

Interim site condition until Spring District buildings and Spring Blvd built.

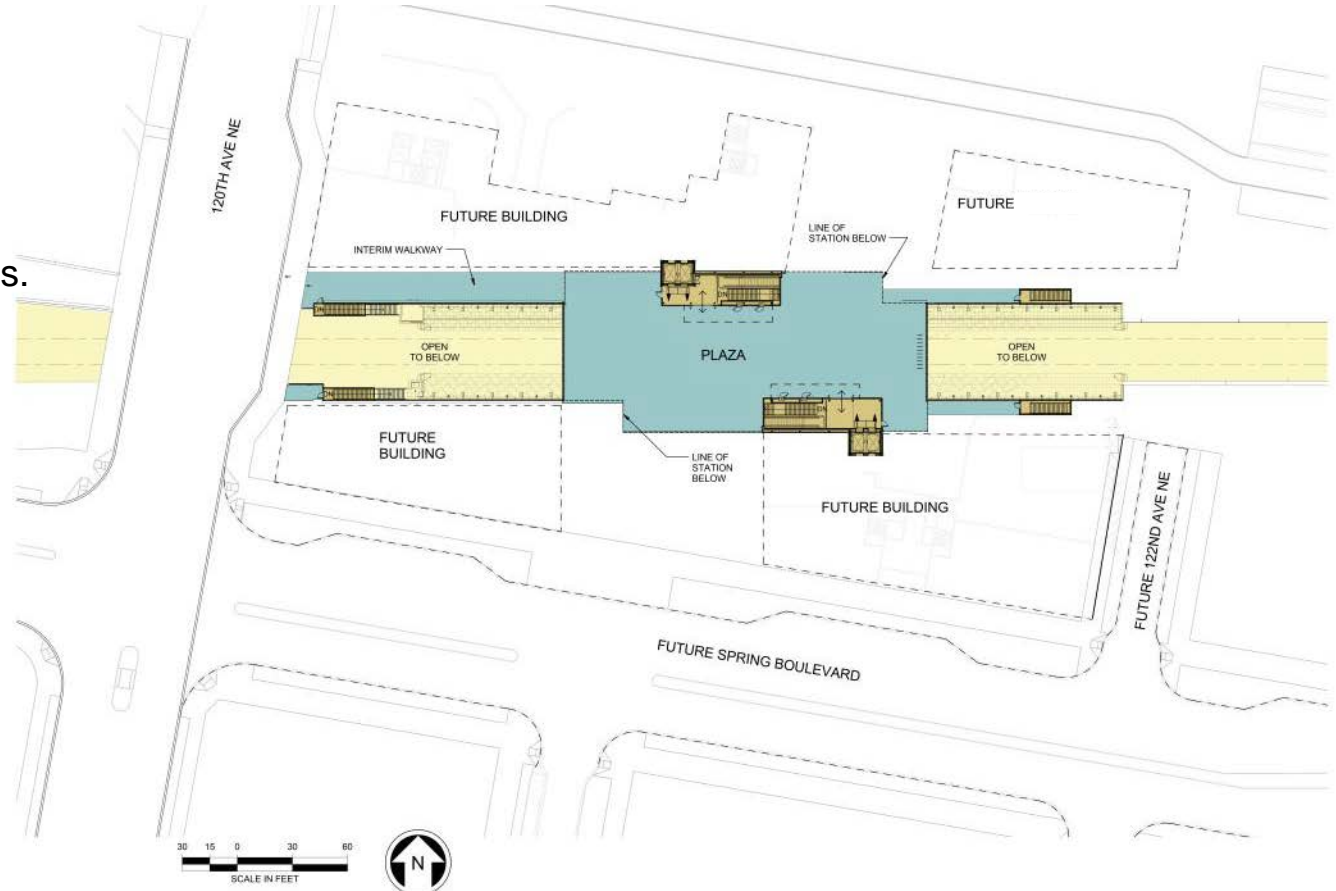


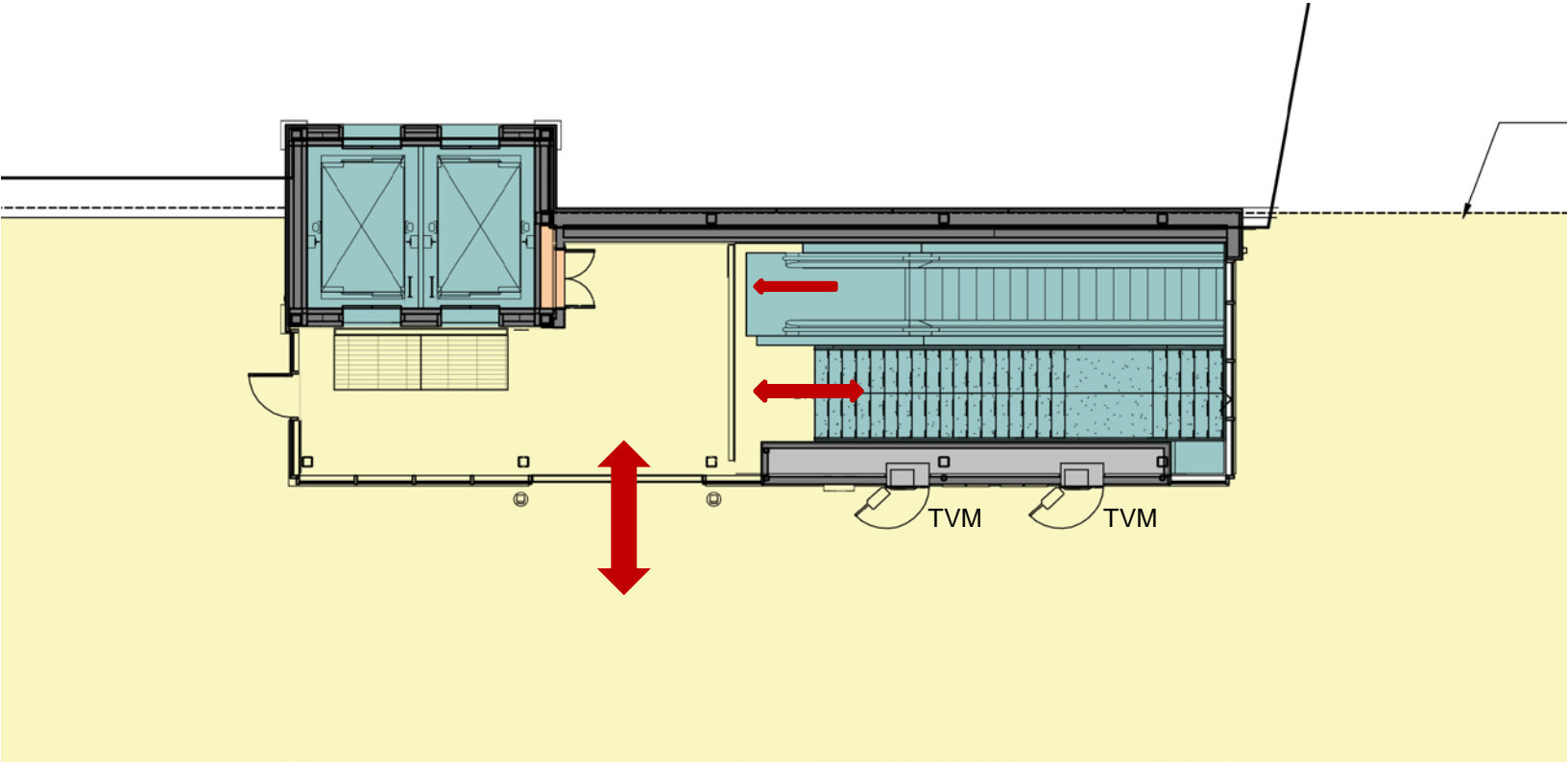
Design Program:

Station entrances “within” future Spring District buildings.

Large plaza spanning station trench – 160 ft -200 ft wide.

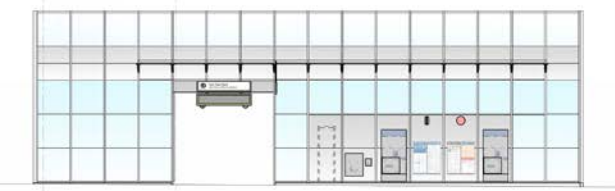
Interim site condition until Spring District buildings and Spring Blvd built.



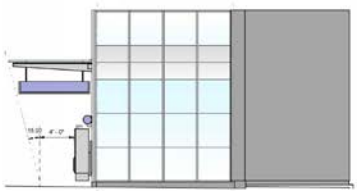


North Entrance Plan

Spring District /120th Station



HEADHOUSE NORTH ELEVATION



HEADHOUSE WEST ELEVATION

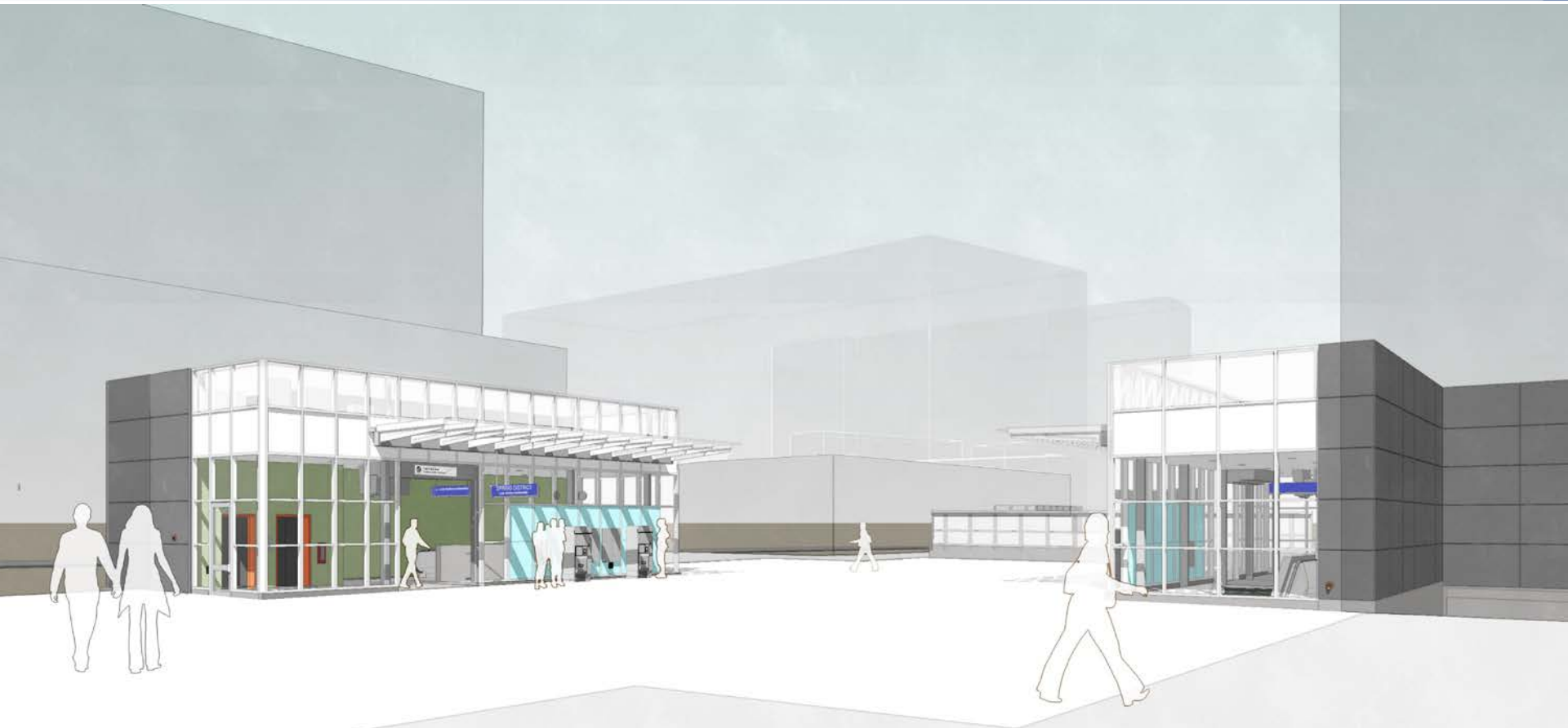


HEADHOUSE EAST ELEVATION



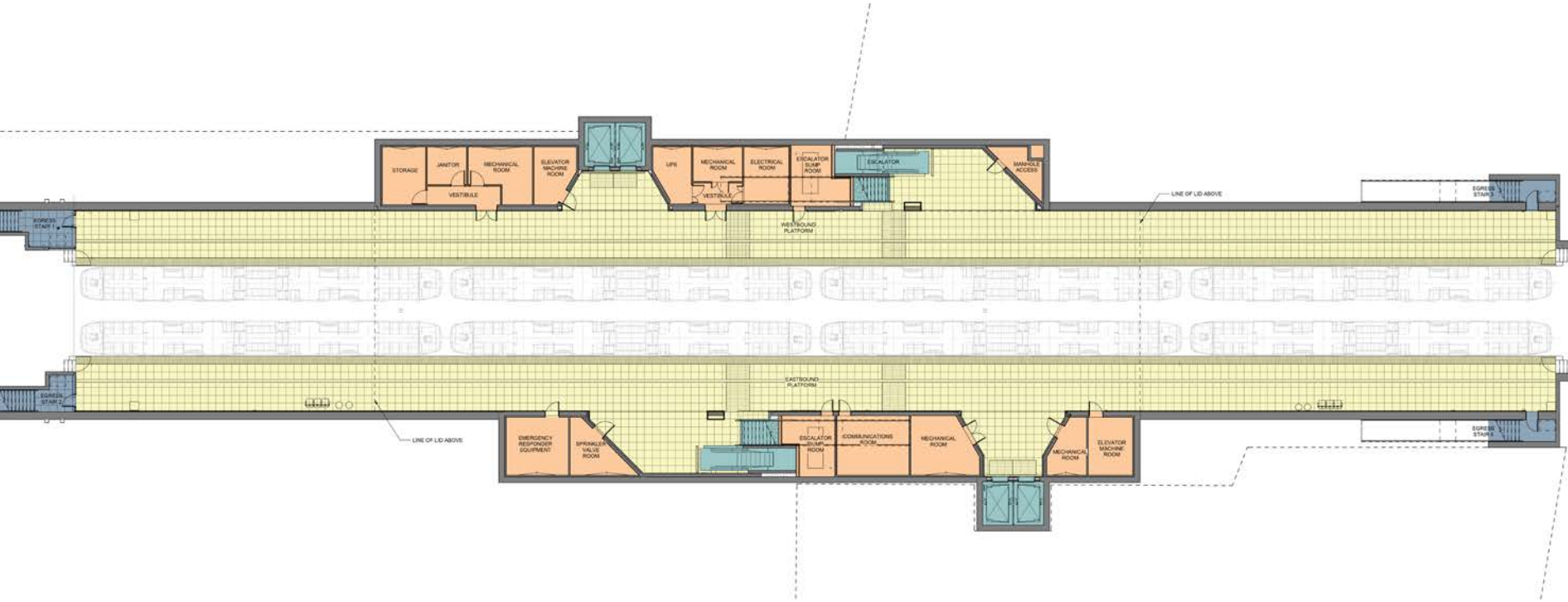
HEADHOUSE EXTERIOR VIEW

Typical Station Entrance



Station Entrances

Spring District /120th Station



Platform Plan



Platform View



Platform View

Spring District /120th Station



View Looking Northeast Near 120th Ave. NE





Questions