

Everett Link Extension



*Recommendations: Alternatives for
Environmental Review
Spring 2023*

Process for selecting alternatives for environmental review

This documents the recommendations of the Community Advisory Group from March 29, 2023 and the Elected Leadership Group from April 25, 2023 for alternatives to continue to study in the environmental review phase of the Everett Link Extension and OMF North project. Environmental review will last the next several years and includes the preparation of a Draft and Final Environmental Impact Statement (EIS).

Sound Transit staff made additional recommendations to the Sound Transit Board's System Expansion Committee (SEC) in May (noted in blue in the following pages), and the SEC will make their own recommendations on June 8, 2023.

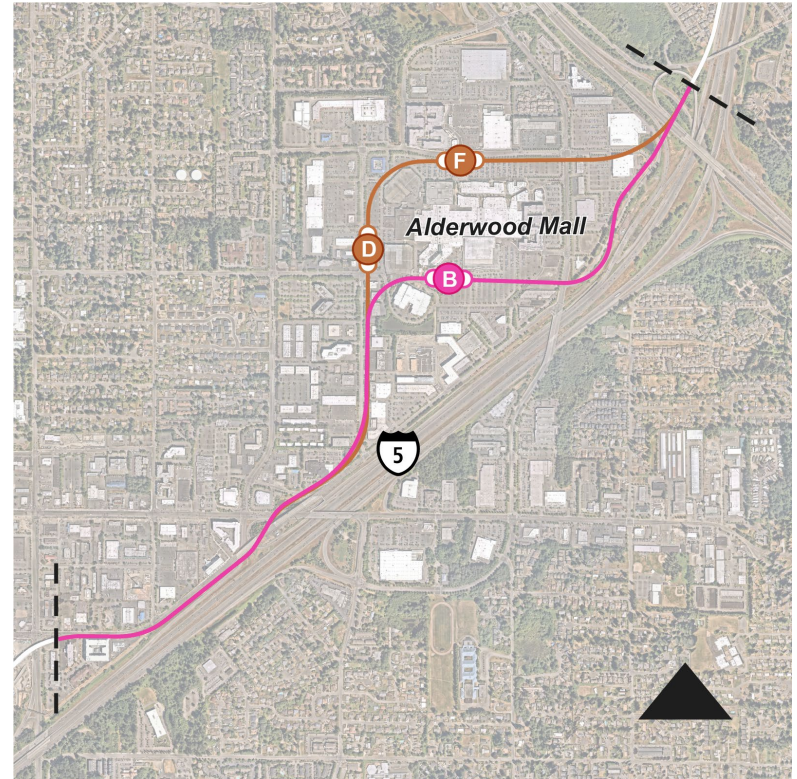
The Sound Transit Board will make the final decision on alternatives to study in the Draft EIS on June 22, 2023. This may also include the identification of a Preferred Alternative in some or all of the locations.

West Alderwood Stations

Recommendations

	CAG	ELG
B	Remove from study	Remove from study/continue if needed*
D	Preferred	Preferred
F	Continue study	Continue study

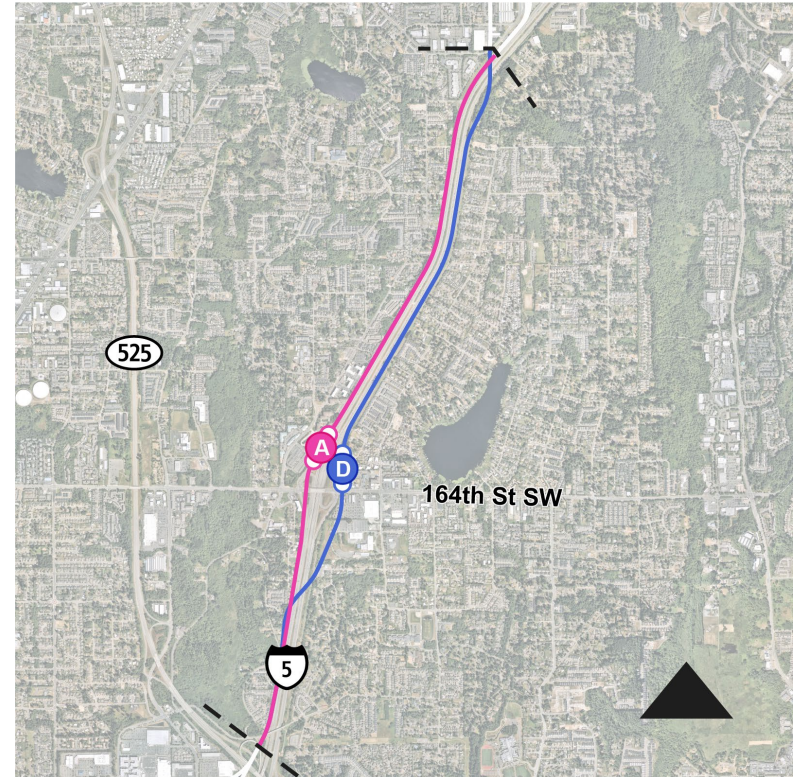
*ST staff recommends continuing to study Station B to minimize risk of only one alignment evaluated in the Draft EIS



Ash Way Stations

Recommendations

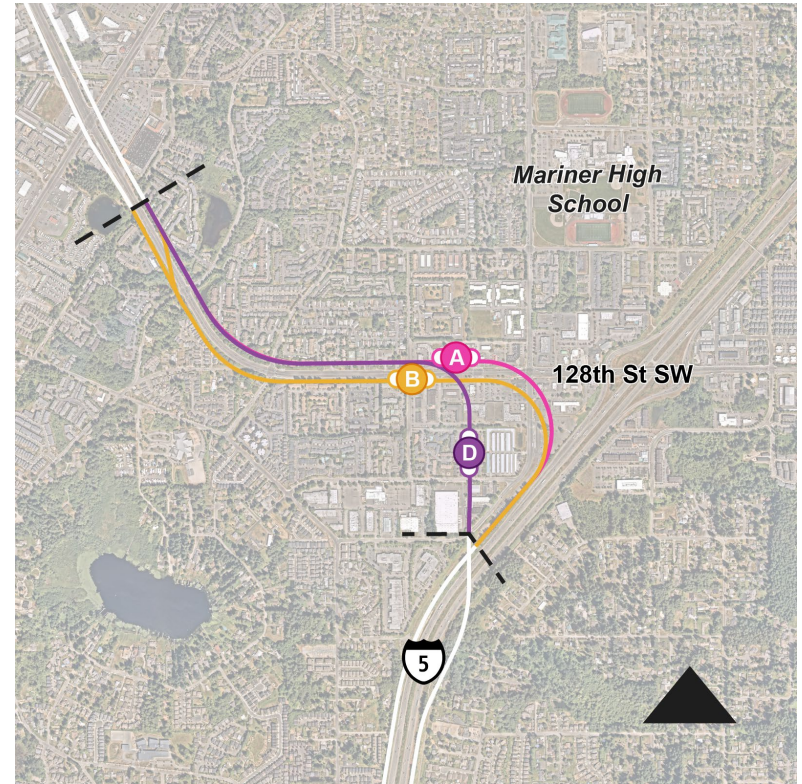
	CAG	ELG
A	Continue study	Continue study
D	Preferred	Continue study



Mariner Stations

Recommendations

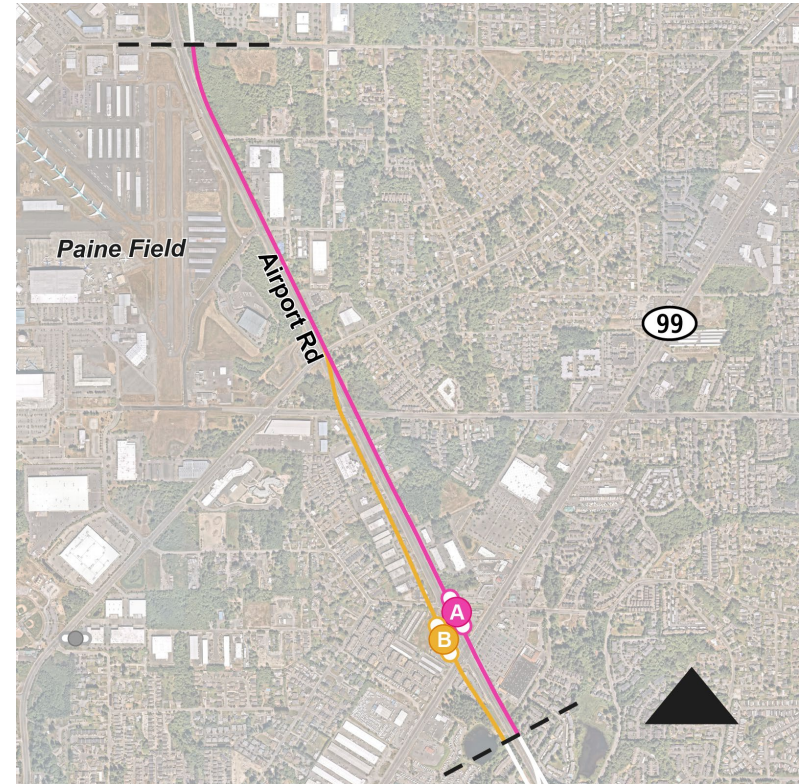
	CAG	ELG
A	Remove from study	Remove from study
B	Preferred	Continue study
D	Continue study	Continue study



SR 99/Airport Road Stations

Recommendations

	CAG	ELG
A	Preferred	Continue study
B	Continue study	Continue study

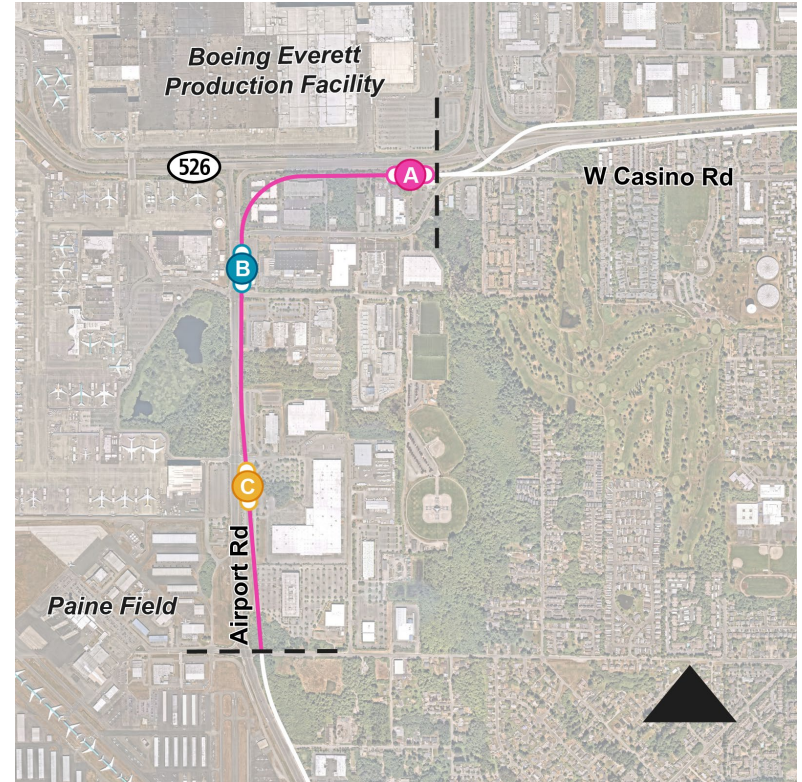


SW Everett Industrial Center Stations

Recommendations

	CAG	ELG
A	Mixed	Preferred
B	Mixed	Continue study
C	Mixed	Remove from study/continue if needed*

*ST staff recommends continuing to study Station C to retain multiple station options evaluated in the Draft EIS

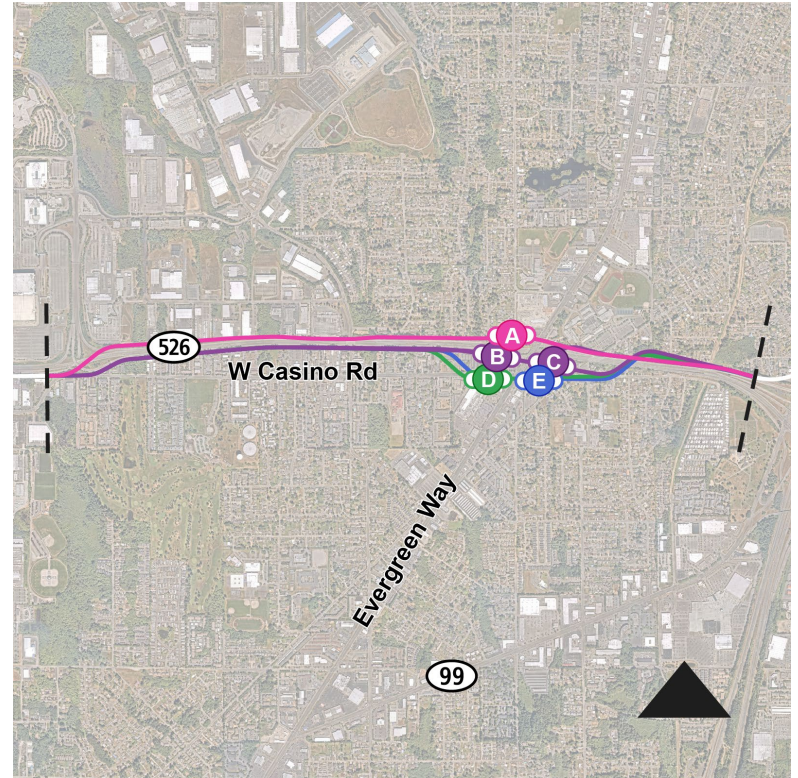


SR 526/Evergreen Stations

Recommendations

	CAG	ELG
A	Mixed	Continue study
B	Continue study	Continue study*
C	Remove from study	Remove from study
D	Continue study	Remove from study
E	Continue study	Continue study*

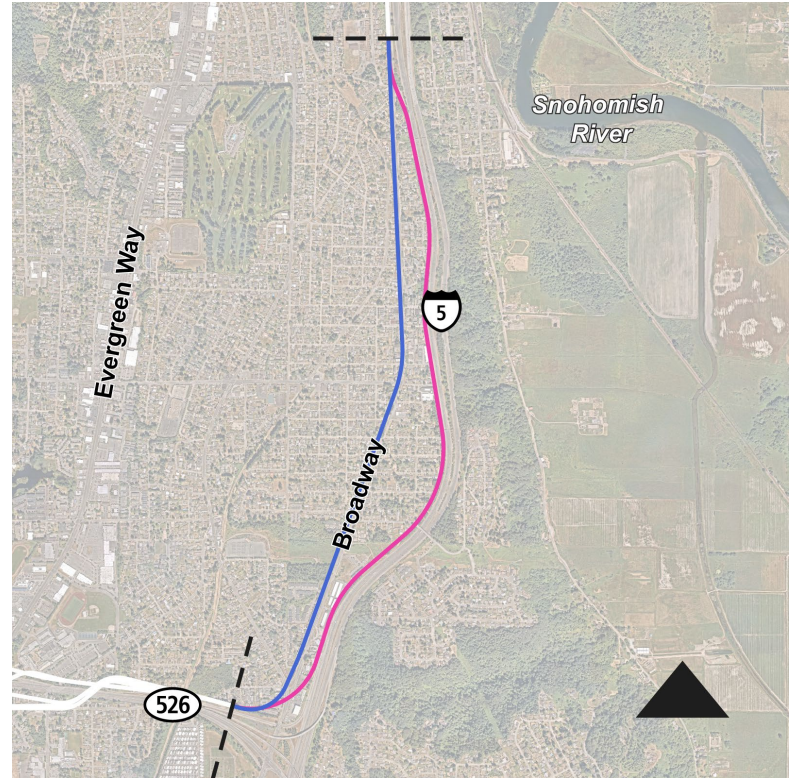
*The ELG recommended a station and alignment south of SR-526 as the preferred alternative.



I-5 / Broadway Alignment

Recommendations

	CAG	ELG
I-5	Preferred	Preferred
BRD	Continue study	Continue study

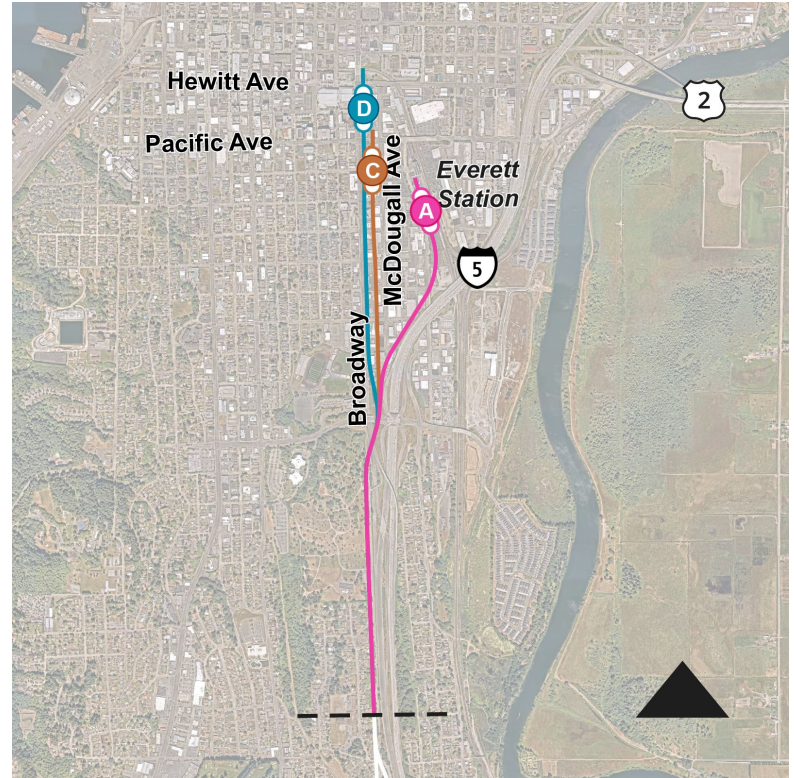


Everett Station

Recommendations

	CAG	ELG
A	Remove from study	Continue study*
C	Continue study	Preferred
D	Preferred station on C alignment	Preferred station on C alignment

*The ELG recommended a revised Station A that avoids impacting Everett Station



Operations & Maintenance Facility North

Recommendations

	CAG	ELG
Site B1	Continue study of a hybrid location of Sites B1 and B2.	Continue study of a hybrid location of Sites B1 and B2.
Site B2		
Site E	Continue study	Continue study
Site F	Continue study	Continue study

