



Everett Link Extension

Community Engagement Guide

January 2024



Table of Contents

	Cover page
	Table of contents
1	Land acknowledgment
2	Who we are
3	Overview
8	Audiences
9	Our commitment to you
11	Equity and inclusion
14	Community engagement and communication tools
17	Engagement FAQs
18	Partnerships
20	How to get involved
21	Glossary

We will provide translated project materials on the **project website** and by request. If we are missing your language, please call our project line at: 206-370-5533 or email everettlink@soundtransit.org, and we will do our best to meet your needs as quickly as possible. We also provide translation services over the phone and at public meetings if requested in advance.

프로젝트 웹사이트 및 요청을 통해 번역된 자료가 제공될 것입니다.

귀하의 언어가 없는 경우, 저희 프로젝트 번호로 전화해 주시거나: 206-370-5533, everettlink@soundtransit.org로 이메일 주시면 최대한 신속히 귀하의 필요를 충족하기 위해 최선을 다하겠습니다. 또한, 사전에 요청하시면 전화 통역 및 공개 회의 통역 서비스를 제공해 드립니다.

Мы будем предлагать переведенные материалы проекта на вебсайте проекта и по требованию.

Если ваш язык отсутствует, пожалуйста, позвоните на линию проекта по телефону 206-370-5533 или отправьте имейл everettlink@soundtransit.org и мы постараемся оказать вам помощь как можно быстрее. Мы также предоставляем услуги переводчика по телефону и на общественных встречах по предварительному полученному запросу.

Proporcionaremos información del proyecto traducida en el sitio web y a pedido.

Si nos faltó su idioma, llame a la línea telefónica del proyecto al 206-370-5533 o envíe un correo electrónico a everettlink@soundtransit.org, y haremos todo lo posible por satisfacer sus necesidades tan pronto como sea posible. También ofrecemos servicios de interpretación por teléfono y en reuniones públicas si se solicitan con anticipación.

Acknowledgement of Tribal Partners

Sound Transit would like to acknowledge our Coast Salish Peoples, particularly the Snohomish, Suquamish, Stillaguamish and Tulalip tribes. We deeply respect our Tribal Nations' right to sovereignty, and are committed to listening, learning, and lifting indigenous voices. With our deepest appreciation, we would like to recognize their continued stewardship and advocacy for the land and our environment.



Who we are

Who is Sound Transit?

- We're connecting more people to more places to make life better and create equitable opportunities for all.
- Sound Transit is a public transit agency that plans, builds and operates regional transit service throughout the urban areas of Pierce, King, and Snohomish counties.
- We are governed by an 18-member Board of Directors made up of your local elected officials and the secretary of the Washington State Department of Transportation. The Board establishes policies, provides direction and oversight, and is the key decision-maker in selecting routes and station locations.
- Transit services include Link light rail, Sounder trains and ST Express bus.
- With voter approval in 2016, we are in the process of planning and building the most ambitious transit expansion in the country. Learn more at soundtransit.org/system-expansion.
- You have many more opportunities to shape Sound Transit service and the development of transit projects, and we hope to hear from you.

GET UPDATES

▶ soundtransit.org/subscribe – Check the Everett Link Extension box to receive project updates.



I have been working in transportation in the Puget Sound region for the last 15 years and I know that effective community engagement is essential to the success of a project. At Sound Transit we are committed to becoming an anti-racist organization and continuously improving our processes, including more equitable engagement. We work to be transparent in our decision-making, hold ourselves accountable to those most affected by our projects, and push ourselves to find creative solutions to challenges. We value your feedback and welcome your questions and concerns, so please feel free to reach out at everettlink@soundtransit.org or call us at 206-370-5533. We hope you get involved, voice your thoughts, and stay engaged with us!

Jaclyn Gault, Senior Community Engagement Specialist

Phone: 206-370-5533

Email: everettlink@soundtransit.org

Overview

What is this document?

This is your guide to engaging with the **Everett Link Extension** project. It explains: Sound Transit's goals for the project.

- Our guiding principles for how we are engaging with your neighborhood.
- How you can get involved in the project today and into the future.
- Our proposed approach to engaging with you throughout this process.
- Our decision-making process and plan for accountability (this includes you).

Thanks to regional voters, we are undertaking an ambitious mass transit system expansion. The **Everett Link Extension** will provide fast, reliable light rail connections to residential and job centers throughout the region, adding 16 miles of rail in Snohomish County to the regional light rail network. This project will also build an **Operations and Maintenance Facility (OMF North)** to support the regional network. The project extends Link service north from Lynnwood City Center to Everett Station.

Planning for this project is underway, and your participation is vital to our success. We completed the **alternatives development** phase in mid-2023 and are currently in the **environmental review** phase of planning. During this phase, the project alternatives undergo a detailed analysis through an **Environmental Impact Statement (EIS)**, which evaluates the potential effects of the project. Once the draft EIS is published, we will seek public comment to make sure we are addressing community concerns.

We strive to create inclusive and meaningful outreach opportunities. We will let you know about these opportunities on the project web page, through our social media channels, community newsletters, local media, our project email list, and other outlets. We hope you will join us in planning Link light rail service that is valuable to all. To receive project updates, visit soundtransit.org/subscribe and check the **Everett Link Extension** box. If there is a way to communicate not in the list above that we should be using, please share that with us as well.



See a word in **bold**?

Find it in our glossary (page 29) for more information about that term.

**CHECK OUT THE GLOSSARY
PAGE 29 >**

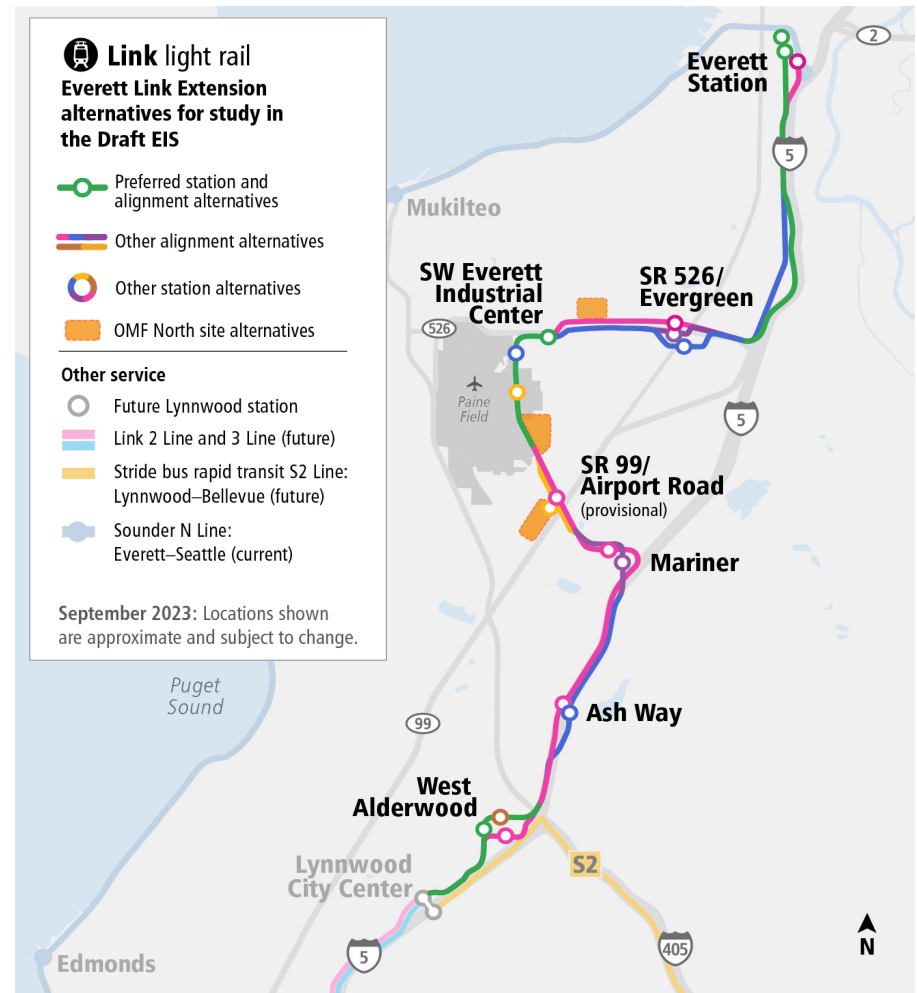
Project map

The project at a glance:

- Sixteen miles of Link light rail.
- Six stations at West Alderwood, Ash Way, Mariner, SW Everett Industrial Center, SR 526/Evergreen and Everett Station, plus one provisional station at SR 99/Airport Road.
- **OMF North** to support the north corridor and the entire Link system expansion.

Operations and Maintenance Facility (OMF) North

Sound Transit needs space to receive, store, and service a larger train fleet to support future light rail extensions to Everett and throughout the region. The OMF North will support more than 450 high-skilled, well-paid jobs at the facility to repair, clean, and operate the cars and tracks so that the trains can run efficiently and smoothly. The facility will require a large tract of land near the light rail line and will be designed with heavy influence from the surrounding neighborhood.



What is a provisional station?

Provisional stations are those with funding for planning, preliminary engineering, and environmental review, but not for design and construction. Sound Transit will utilize the initial work if funds become available for design and construction.

What are the benefits of the OMF North?

- Creates 500+ high-skilled, living-wage jobs for people in Snohomish County. At our existing OMF Central in Seattle and OMF East in Bellevue, the average employee wage is \$45 per hour, or \$85,000 per year.
- Ensures thousands of passengers can rely on clean, well-maintained trains.

How did we get here?

The **Everett Link Extension** was included in the Sound Transit 3 (ST3) ballot measure approved by voters in 2016. ST3 defined the representative project, or starting point for Sound Transit's planning efforts. With input from the community, Snohomish County Light Rail Communities identified locally favored options for the Ash Way and Mariner stations and provided initial analysis on the locations in 2018-2020. Metro Everett has also identified a locally favored option for the Everett Station in 2019.

Sound Transit completed the **alternatives development phase** of planning from 2021-2023. During this phase, the project team reviewed the **representative project** and input from local planning, additional alternatives, asked for public input, and analyzed those options to determine which met the project purpose and need and showed the most potential. In June 2023, the Sound Transit Board identified the set of alternatives to be studied in the **environmental review phase**.



How community input has influenced the project

During the planning phase, Sound Transit considers feedback from partner agencies, elected officials, and the public to make decisions.

Over the next few years, your feedback will help us continue to evaluate potential alignments, stations, and OMF North locations throughout the environmental review process. Early **community engagement** ahead of key decisions helps us plan and design a system that better meets the needs and desires of the community.

Public input gathered between 2021 and 2023 helped us understand which alternatives to study in greater detail. Public feedback has been integral to the project team in narrowing station and route options for study that meet technical and community needs.

Some examples of how community input has influenced the project include:

No route along Casino Road

During the alternatives development phase, we studied routes along Casino Road between Southwest Everett Industrial Center and SR 526 / Evergreen, but due in part to concerns we heard from community about potential residential and business displacement and the level of community disruption, these route options were removed from consideration.

Retaining SR 526 / Evergreen alternative EGN-A in environmental review

Sound Transit also heard from community members who were concerned about potential home and business displacements in the SR 526 / Evergreen station area. Station option EGN-A, which is located north of SR 526, had mixed results from initial studies,

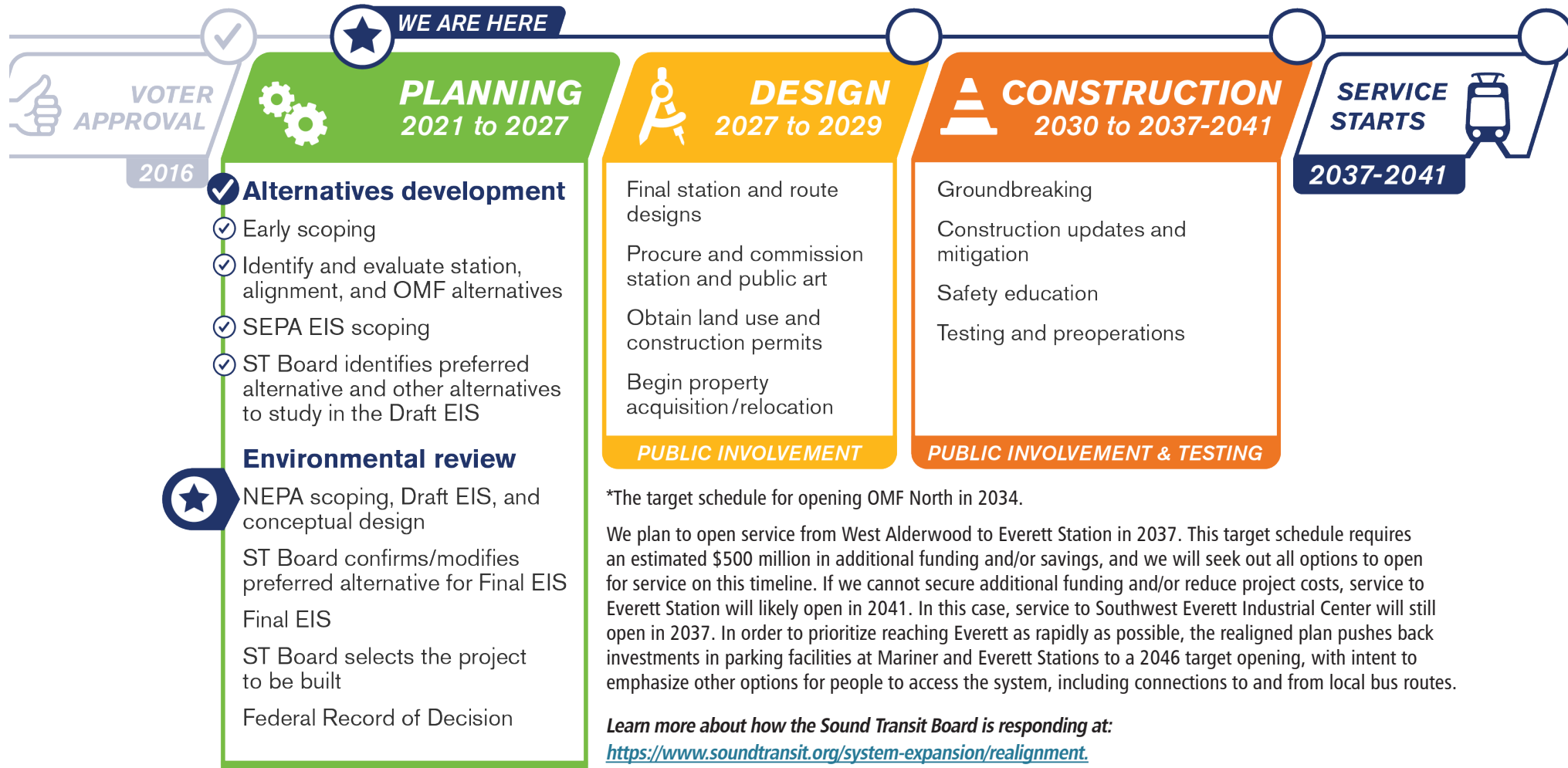
but Sound Transit decided to keep studying this alternative in the EIS due in part to strong community support.

No Broadway route in downtown Everett

Due to feedback about potential effects to businesses along Broadway in downtown Everett, Sound Transit revised the route alignment associated with station alternative EVT-D, a station option located on Broadway just north of Pacific Avenue. The route for the EVT-D station alternative was initially drafted running along Broadway, but after hearing concerns, Sound Transit revised this route to run along McDougall Avenue most of the way to the EVT-D station location.



Anticipated schedule



Audiences

We need many different voices to help create a system that serves everyone. We actively seek to engage a wide variety of audiences, from neighborhood and community stakeholders, to elected officials, tribal governments, partner agencies, the general public, and media outlets. While we will engage with many different groups with this project, it is imperative to engage with neighbors who live closest to the project corridor and those that the project will potentially affect. Don't see yourself on this list? Let us know! Email everettlink@soundtransit.org.



Neighborhood and community stakeholders

- Advocacy groups
- Communities of color
- Communities that may speak a variety of languages and/or may not speak English
- Community-based organizations
- Cultural groups
- Current and future transit riders
- Historically and institutionally underrepresented communities
- Immigrant and refugee populations
- Low-income households
- People with varying abilities
- Residential and business property owners
- Small businesses and businesses owned by people of color
- Social service organizations
- Systemically disadvantaged communities
- Tenants
- Youth and older adult populations

Strategies for engagement

- Community Advisory Group
- Community workshops
- Email updates
- Existing engagement efforts and opportunities
- Interviews and briefings
- Media
- Online
- Social media
- Pop-up outreach
- Print and digital materials (English and multiple languages)
- Property/business owner and resident meetings
- Public events and webinars



Public

People who live, work and commute in, through and around the project area.

Strategies for engagement

- Email updates
- Media
- Public events
- Online
- Social media
- Webinars



Elected officials, tribes, and partner agencies

Elected officials and appointees, tribes, permitting agencies, and other governmental agencies.

Strategies for engagement

- Elected Leadership Group
- Tribal engagement
- Interagency Group



Media

Print, digital and broadcast media, including community, local and ethnic media sources.

Strategies for engagement

- Media briefings
- Press releases
- Proactive engagement with journalists

Our commitment to you

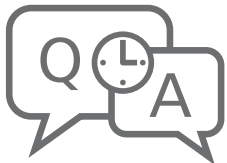
You will have various opportunities to shape the development of the project. Your participation is important to ensure that your community's priorities are heard, and we hope that you will weigh in to inform our work. You can read our guiding **community engagement** principles and values on our website at soundtransit.org/everettlink.



Be proactive (Collaboration, Passenger Focus):

Engage and build long-term relationships with our project audiences early on and throughout the decision-making process.

Our commitment to you: Through a wide range of opportunities, we will invite you to learn and engage with us as the project progresses. We will focus on frequent engagement with stakeholders and will provide project-wide engagement opportunities to distribute information, solicit feedback on elements that affect all stakeholders in the project area, and meet communities where they are.



Be transparent (Integrity):

Foster trust through transparent communication, meaningful and equitable **community engagement** and provide timely responses to project questions and feedback.

Our commitment to you: We will set clear expectations regarding the project timeline and which project and design elements the community and stakeholders can weigh in on. We will listen and respond to stakeholder questions and demonstrate how the project team considered feedback.



Encourage awareness

Encourage local and regional awareness of the anticipated benefits, potential negative effects and progress of the project.

Our commitment to you: We will use a variety of communication tools to share information about the project and opportunities to get involved, raising awareness throughout the region about this project.

The **Everett Link Extension** project aims to uphold Sound Transit's values of:

- Collaboration
- Passenger Focus
- Inclusion and Respect
- Safety
- Integrity
- Quality



Be accountable (Quality, Passenger Focus, Integrity):

Clearly communicate when, where and how public feedback was used to make project decisions.

Our commitment to you: We ask communities, especially those most affected by the project, to provide input throughout the decision-making process and at key milestones. We will review and analyze this feedback and report back on how it was considered and incorporated into the decision-making process. We will also consider the planning efforts that local jurisdictions have conducted for improving transit connections in Snohomish County.



Ensure accessibility (Inclusion & Respect):

Ensure accessibility by providing information in a variety of formats so that all communities can participate and engage with us.

Our commitment to you: We will provide materials in both digital and print formats, present information in an easy-to-read, understandable and accessible format and provide translated materials in common languages spoken along the project corridor (see pg. 19 for more details).



Advance equity (Inclusion & Respect, Collaboration, Passenger Focus):

Strive for equity and inclusion by tailoring our engagement efforts to reach historically underrepresented communities.

Our commitment to you: We will engage with historically underrepresented populations and we will reflect your voices in the project. We will provide multiple opportunities and methods for engaging with the project in a manner that is most comfortable for the communities we seek to reach. We will continue to check in with stakeholders about their needs and how we can improve our outreach methods as the project progresses.

Equity and inclusion

How does Sound Transit consider project effects on historically excluded communities?

We are committed to integrating equity and inclusion into planning and building the project to support a more equitable transportation system. The **Everett Link Extension** project, like many **System Expansion** projects, is large and complex and will affect communities throughout the project area. We look at potential impacts and benefits of different route, station, and **OMF North** location options for historically excluded populations, including people of color, limited English-speaking communities, people with a lower household income, people who are immigrants or refugees, older adults and people with disabilities.

As a key part of this effort, we will engage the community throughout the project. We will listen and seek to understand what about your community and its history is important to you. We will also work with you to identify ways to contribute to your community through the development of this project, such as providing jobs, green space or skill-based training and mentorship programs.

In addition, we are conducting an environmental justice analysis in compliance with federal regulations. The analysis will describe the demographics of the project corridor, evaluate whether the project would disproportionately impact historically underrepresented communities, and document our efforts to involve communities of color and low-income populations in the planning process.

Our commitment to anti-racism

At Sound Transit, we are challenging ourselves to plan, build and operate public transit that provides equitable access to housing, education, medical facilities, and job opportunities, especially for those who have been most harmed by institutional and systemic racism.

We are committed to being an anti-racist organization and ensuring that we are creating the conditions necessary to achieve racial equality within our agency and the broader community. This means taking steps to uproot systemic racism within our organization and implementing equitable policies across our projects and services. We understand that these steps are just the beginning of our anti-racism journey and that we have a long way to go. We must and will evaluate our policies, systems and processes, and work toward an equitable future.



How will Sound Transit engage historically excluded communities throughout the project?

We are committed to reaching out to and centering the needs of historically excluded communities in the project area as we share information, ask for feedback and answer your questions.

We will work to proactively remove barriers to an equitable **community engagement** process by:

- Reaching out to organizations that work with historically excluded communities in the project area to better understand and engage those communities.
- Holding conversations in language or providing translators or interpreters at public meetings and community gatherings and in online engagement settings.
- Translating materials into languages spoken along the project route.
- Holding smaller meetings focused on the needs of individual communities and cultures.
- Providing stipends, incentives and/or other direct means of support to reduce barriers to engagement.
- Meeting communities where they gather, such as community centers and events, houses of worship, and people's homes.

Can I get project information for my community?

If you are interested in learning more about this project and how it may specifically benefit and/or affect your community, please contact us at 206-370-5533 or everettlink@soundtransit.org.



How will Sound Transit hold itself accountable for equitable engagement?

We are committed to enhancing mobility and improving quality of life for people in the corridor and region, including transit-dependent, and low-income communities. Sound Transit developed a **Racial Equity Toolkit (RET)** and an **Equitable Engagement Toolkit (EET)** to assess and address impacts on racial equity in the project and its surrounding areas. The toolkit encourages intentional conversations with the community that will guide the project in an equitable direction.

How will the RET guide the outreach and engagement methods for this project?

Our approach will emphasize **community engagement**, such as equity workshops, to gain a deeper understanding of the priorities, desires, and concerns of communities of color along the project corridor. This valuable input will be incorporated into project planning and evaluation measures. The direct participation of these communities is a vital component of the **RET** process because critical information, such as culturally significant places, businesses, and resources, cannot be discerned solely from census data. Our goal is to elevate the perspectives of historically and currently excluded groups in the planning process and to align with their priorities as our project team studies station and route alternatives during the Draft Environmental Impact Statement (EIS) phase.

How will Sound Transit keep the community informed on the use of the toolkits?

The toolkits will help our team establish ways to measure progress toward greater racial equity outcomes in the communities we serve. We will evaluate and report out on our efforts at key project planning milestones. In addition, we conduct annual surveys in our service and project areas to monitor satisfaction with Sound Transit as an organization and with the **community engagement** process. Our team is committed to leveraging these opportunities for evaluation to also assess how Sound Transit is advancing racial equity in our communities.



We want to hear from you!

We will continue to assess and adapt our engagement tools and strategies based on what we learn from the community.

If you have ideas for how we can best engage you, share your ideas with us at 206-370-5533 or everettlink@soundtransit.org.

Community engagement and communication tools

Here's how you can expect to engage with us in the coming months:

Online

Virtual public meetings

Join us at virtual public meetings, such as webinars or town halls, to watch a presentation, speak with subject matter experts, and share your input with the project team. We will provide advanced notice ahead of any virtual meeting and request interested attendees RSVP for the event. Sign up for project email updates to stay in the loop about these opportunities: soundtransit.org/subscribe.

Online open houses

Can't make the virtual public meeting or maybe you prefer to engage online at your own convenience? We will host online open houses that will mirror the virtual public meeting and in-person open house experience, in terms of the information shared and the opportunity to comment. Online open houses are accessible 24/7, so you can engage with the content on your own schedule. We will also translate online open houses into key languages spoken along the project corridor and ensure the material is accessible with screen readers for those who are visually impaired.

Community conversations

We held a series of informal virtual conversations with service providers, community-based organizations and members of the community to introduce ourselves and begin building long-term relationships with neighbors along the corridor. These conversations help us gain a better understanding of peoples' experiences, priorities, and concerns related to regional transit and the **Everett Link Extension**. We prioritized meeting with traditionally underrepresented groups. Community conversations help to identify opportunities and limitations of how the community would like to be engaged and important neighborhood assets that should be protected or enhanced as part of this project.

Web page

Your first stop for **Everett Link Extension** information is the project webpage (soundtransit.org/everettlink) — a hub for up-to-date project information, including opportunities to get involved, upcoming events and meetings, project materials and more.

Briefings

Be on the lookout for the opportunity to meet with the project team through a virtual briefing. We will proactively reach out to key community stakeholders, property owners, service providers, businesses and interest groups to offer project briefings, build relationships with organizations along the corridor and help answer questions. We will also meet with partner agencies and local jurisdictions as needed or by request. If you are interested in receiving a briefing from the project team, you can reach out at any time: everettlink@soundtransit.org or call 206-370-5533.

Email updates

Subscribe to our monthly project email list: soundtransit.org/subscribe. We will share regular updates on the project and upcoming opportunities to engage. We will send email updates to people who opt in or request information via sign-in sheets at open houses and pop-up events. Stakeholders who contact us directly will automatically be subscribed to the list but may opt out at any time.

Property owner, tenant, and business outreach

Do you own a property along the project corridor? We recognize the need for extensive outreach to property owners, tenants, and businesses that may be directly affected to prevent surprises. We won't know property impacts until we are further into the environmental review process. In the coming years, we will seek to identify and learn more about the properties in the project area and begin evaluating potential impacts. You may see us reaching out in a variety of ways, including neighborhood group briefings, one-on-one meetings, workshops, round-table discussions, and door-to-door visits to inform you of relevant information about specific property impacts. We will work with you to provide a direct means to get in touch with the project team and collaborate to minimize impacts when possible.

Social media

Follow along and engage with the **Everett Link Extension** project on Facebook, Twitter, Instagram, YouTube and LinkedIn. We will share project news and upcoming events on a regular basis. You can find us @SoundTransit.



In-person

Community and neighborhood outreach

Are you a local resident or a member of this community? We understand that local neighborhoods along the project corridor have specific needs, concerns and preferences they would like us to consider in the project development process, including how best we can share information. We will reach out to community organizations, neighborhood associations, and service providers to inform the community engagement process and ensure responsiveness to all questions and inquiries.

In-person public meetings

Join us at in-person public meetings to learn about the project, speak with project staff, and share your input. We look forward to hosting a series of public meetings along the project corridor to help inform critical decisions during the alternatives development process. We will continue to offer a virtual engagement option, such as online open houses, for those who prefer to engage online.

Fairs, festivals, and tabling

You can often find us at fairs, festivals and farmers markets in your local community. We want to come to the areas we work in to speak with you about the project, learn more about your interests and concerns, and help answer your questions.

Door-to-door outreach

You may see us going door-to-door to share important information with businesses, property owners and tenants.



Other ways to engage

Existing community engagement efforts

Get involved in ongoing conversations about ways to improve your community? We will work closely with our agency partners and jurisdictions to understand and assist with preexisting collaboration and planning efforts.

Informational materials

You can expect to receive mailed notifications like postcards or see posters placed at local gathering places along the corridor. We will also develop fact sheets, FAQs, infographics and other printed materials. As part of our commitment to be equitable and accessible, we will translate key materials into multiple languages and develop them to be screen reader-friendly for those who are vision impaired.

Media

You will see the project advertised through media outlets and digital ads during key project milestones and public comment opportunities. Media coverage can help reach audiences that might not otherwise know about the project or have an opportunity to connect. We will engage community, local, regional, and ethnic media sources to ensure that we are sharing and distributing accurate project information.

Other ideas?

If you have other suggestions for how we can best reach you or your organization, please contact us at everettlink@soundtransit.org or 206-370-5533.



Engagement FAQs

How do I share my opinion?

There are many ways to share your opinion, including:

- Visit our website and follow @SoundTransit on social media.
- Join us at one of our public events to provide your feedback, and comment on current plans and voice your opinions at major decision points.
- Email with questions, concerns or comments: everettlink@soundtransit.org.
- Call the project line at 206-370-5533 to speak with a community engagement specialist.

We provide involvement opportunities around key project milestones and prior to making big decisions. We strive to create engagement opportunities that are inclusive, equitable and meaningful, and will announce these opportunities through a variety of communication channels.

How can I stay up to date on this project?

Visit soundtransit.org/everettlink to sign up for our project email list! This is the best way to stay up to date on any future events and/or feedback opportunities.

Can you provide information about this project in other languages?

We will provide translated project materials on the [project website](#) and by request. If we are missing your language, please call our project line at 206-370-5533 or email everettlink@soundtransit.org, and we will do our best to meet your needs as quickly as possible. We also provide translation services over the phone and at public meetings if requested in advance.



Para obtener información sobre el proyecto, llame al 800-823-9230.

欲知關於此項目的資訊，請致電 800-823-9230。

За информацией об этом проекте обращайтесь по телефону 800-823-9230.

Para sa impormasyon tungkol sa proyektong ito, tumawag sa 800-823-9230.

Wixii macluumaad ah ee mashruuca ku saabsan, lahadal 800-823-9230.

الاتصال على الرقم التالي: 800-823-9230 لحصول على معلومات بشأن المشروع، يُرجى

For more frequently asked questions, please visit the project website:

 soundtransit.org/everettlink

Partnerships

Implementing this and other projects with the scope, budget, and schedule approved by the voters will take extraordinary effort by Sound Transit and its federal, state, and local partners. To meet the challenge of delivering projects as quickly as possible, Sound Transit developed a **System Expansion Implementation Plan** that embraces new ways of working together. Those adjustments include internal changes at Sound Transit, as well as new approaches to working with project partners, local jurisdictions, elected officials, community members and the public.



As a member of the public, we ask that you communicate your ideas, concerns, and questions about the project through a variety of communications channels to:

- Learn about the project and ask questions.
- Provide feedback on topics and issues that interest you.
- Let Sound Transit know how you would like to engage.
- Share information and discuss the project with your community.



Sound Transit works closely and coordinates with a number of agencies and governments as this project moves forward, including but not limited to:

- City of Everett.
- City of Lynnwood.
- Snohomish County.
- Puget Sound Regional Council.
- Federal Transit Administration.
- Washington State Department of Transportation.
- Community Transit.

The group convenes throughout the planning process to help inform the environmental review.



There will be opportunities for former Elected Leadership Group members and other elected officials to receive briefings about the project progress and give input. The elected officials will:

- Consider the needs of the **Everett Link Extension** corridor within the context of the regional transit system.
- Work with project staff to understand and evaluate preliminary design options and trade-offs.
- Represent the communities they serve and share community priorities and local context.
- Seek to form consensus on group recommendations for the preferred alternative to be determined after the Draft EIS is published.



Community advisors

Members are residents, transit riders, business owners, and representatives of organizations that reflect the diversity found throughout the corridor, including groups with currently and historically reduced access to opportunities. This group is made up of people who know the community and can provide valuable insight as we develop the project. Community advisors:

- Learn about the project and ask questions.
- Represent the diversity of their communities.
- Represent the community and help forge connections between Sound Transit and the community.
- Highlight specific issues and trade-offs in the corridor, including opportunities and tools to best engage the community in this process.
- Present input and feedback for consideration.



Sound Transit Board

The Sound Transit Board oversees the implementation and delivery of the project and has final authority on major project decisions. These decisions include the identification of a **preferred alternative** during environmental review, and selecting the project-to-be-built after the **conceptual engineering** and **environmental review** process is complete. The Board considers recommendations and feedback from the Community Advisory Group, Elected Leadership Group, Interagency Group, and the public when making decisions.

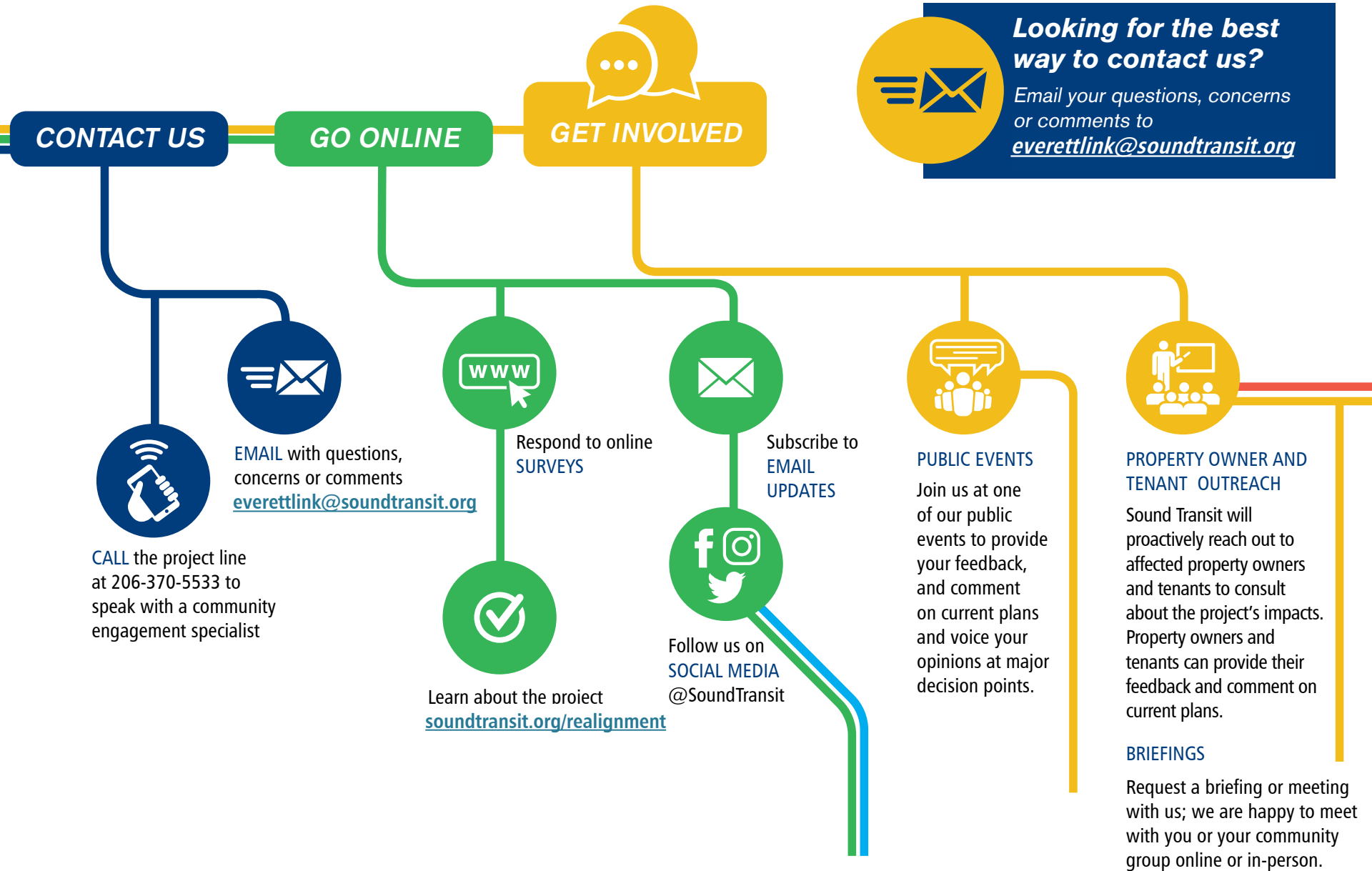


Tribes

In partnership with Sound Transit's Tribal Relations director, the project team consults with Washington state tribes throughout the project development process.



How to get involved



Glossary of terms

Alternatives development

Project phase during which staff assessed the original project included in the 2016 system expansion and, based on additional public engagement and technical analysis, further refined the specific route, station locations and other project elements. The goal of the **alternatives development** phase was to analyze a wide range of options to help inform the Sound Transit Board in identifying **preferred route** and **station locations** and other alternatives that warranted further study.

Community engagement

A process that engages community members in a public dialogue about an issue that affects them.

Conceptual engineering

Process evaluating concepts of engineering that occurs during the **alternatives development** and **environmental review phases** of a project. Engineering concepts will illustrate general design ideas and can be used to identify broad impacts or benefits, identify engineering constraints, and allow development of preliminary cost estimates.

Environmental Impact Statement (EIS)

A document used for decision-making that analyzes impacts of project alternatives under state and federal law. Sound Transit will likely prepare one **EIS** for **Everett Link Extension** to satisfy both state and federal environmental review requirements.

Environmental review phase

The environmental review process informs the public, agencies, and decision-makers about the potential environmental consequences of building and operating the project prior to the Sound Transit Board's decision on the project to build.

Equitable Engagement Toolkit (EET)

The **Equitable Engagement Toolkit** creates a process and a set of questions to embed consistent, equitable and inclusive **community engagement** practices into our organizational culture.

Everett Link Extension (EVLE)

Everett Link Extension is the project name. The project will add 16 miles and at least six new stations of light rail service connecting Snohomish County residents to the regional light rail network.

National Environmental Policy Act (NEPA)

NEPA requires federal agencies to assess the environmental effects of their proposed actions (such as funding local transportation projects) prior to making decisions. The range of actions subject to **NEPA** is broad and includes constructing highways and other publicly owned facilities. The lead federal agency for the **Everett Link** is the Federal Transit Administration (FTA). Using the **NEPA** process, FTA will evaluate the environmental effects, including social and economic effects of the **Everett Link Extension** project and obtain public and agency input prior to issuing a **Record of Decision** and deciding whether to provide federal funding for **Everett Link**.

Operations and Maintenance Facility North (OMF North)

A facility where Link trains go for cleaning, storage, and care, which is open 24 hours a day, 365 days a year. A new **OMF** in the North Sound is necessary to receive, store, and service a larger train fleet to support the future light rail extensions to Everett and throughout the region. To build this new facility, we need approximately 80+ acres near the light rail line in Snohomish County.

Preferred alternative

Under **NEPA**, a **preferred alternative** is the alternative that the lead agency believes would fulfill its statutory mission and responsibilities giving consideration to economic, environmental, technical and other factors. The **preferred alternative** would identify the preferred route, station, and **OMF North** locations. At the end of the **alternatives development** phase, the Sound Transit Board identified

several alternatives to be studied during the **environmental review phase**. The Board will confirm the preferred alternative after public and agency comments are received on the Draft EIS. The Board's final decision on the alternative to be built will not take place until after the Final **EIS** is issued.

Racial Equity Toolkit (RET)

The **Racial Equity Toolkit** lays out a process and a set of questions to guide the development, implementation, and evaluation of policies, initiatives, programs, and procedures to address effects on racial equity. The **RET** process also supports Sound Transit's Environmental Justice analysis to be included in the **Environmental Impact Statement**.

Record of Decision (ROD)

This action completes the environmental process and authorizes final design, then construction of the project. The **Record of Decision** defines mitigation commitments and other requirements for the project following the recent completion of the Final EIS.

Representative project

The voter-approved Sound Transit 3 (ST3) ballot measure included representative projects that were publicly vetted after years of community engagement. They formed the basis for project elements and budgets contained in the ballot measure, and also established the transit mode, approximate route, number of stations, general station locations, and which corridors would have light rail operations and maintenance facilities. The representative project for the Everett Link Extension was the starting point for **alternatives development**.

State Environmental Policy Act (SEPA)

SEPA requires that all local and state governments in Washington consider environmental information before committing to a particular course of action, including construction of public facilities. Sound Transit is the lead agency under **SEPA** for the **Everett Link Extension**. Using the **SEPA** process, Sound Transit will evaluate the environmental effects of the **Everett Link Extension** and obtain public input before the Sound Transit Board selects of a project to build.

System Expansion Implementation Plan

A plan that describes Sound Transit's approach to delivering the expanded system of projects as well as needed reforms based on lessons learned from delivering major capital infrastructure. The most recent system expansion plan was approved in November 2016, which included the Everett Link Extension.



CONTACT US

Visit our webpage and sign up for project news:
[soundtransit.org/everettlink](https://www.soundtransit.org/everettlink).

Email everettlink@soundtransit.org

Call 206-370-5533

