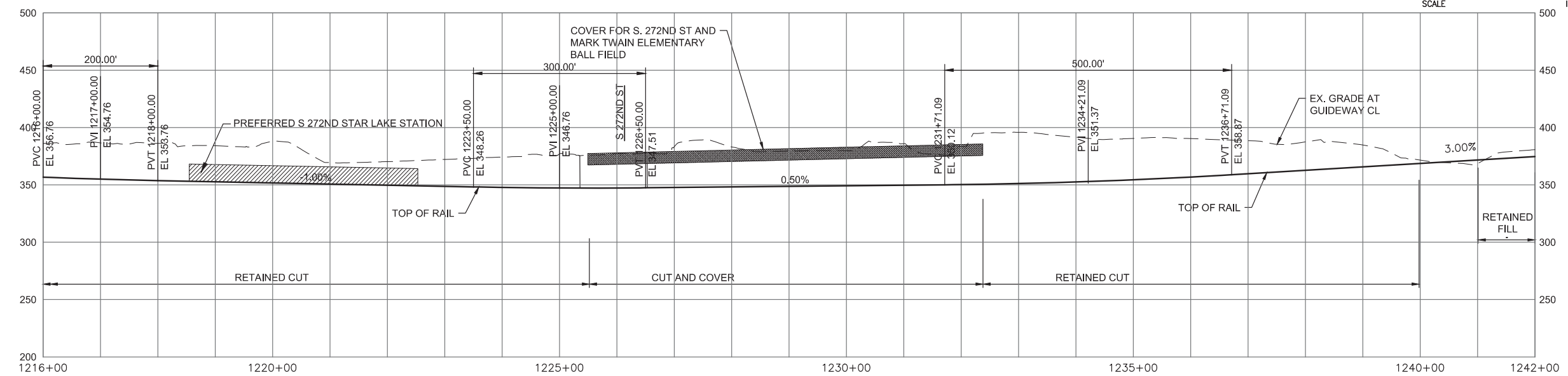
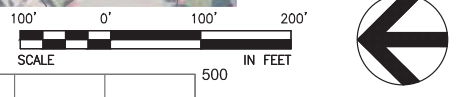
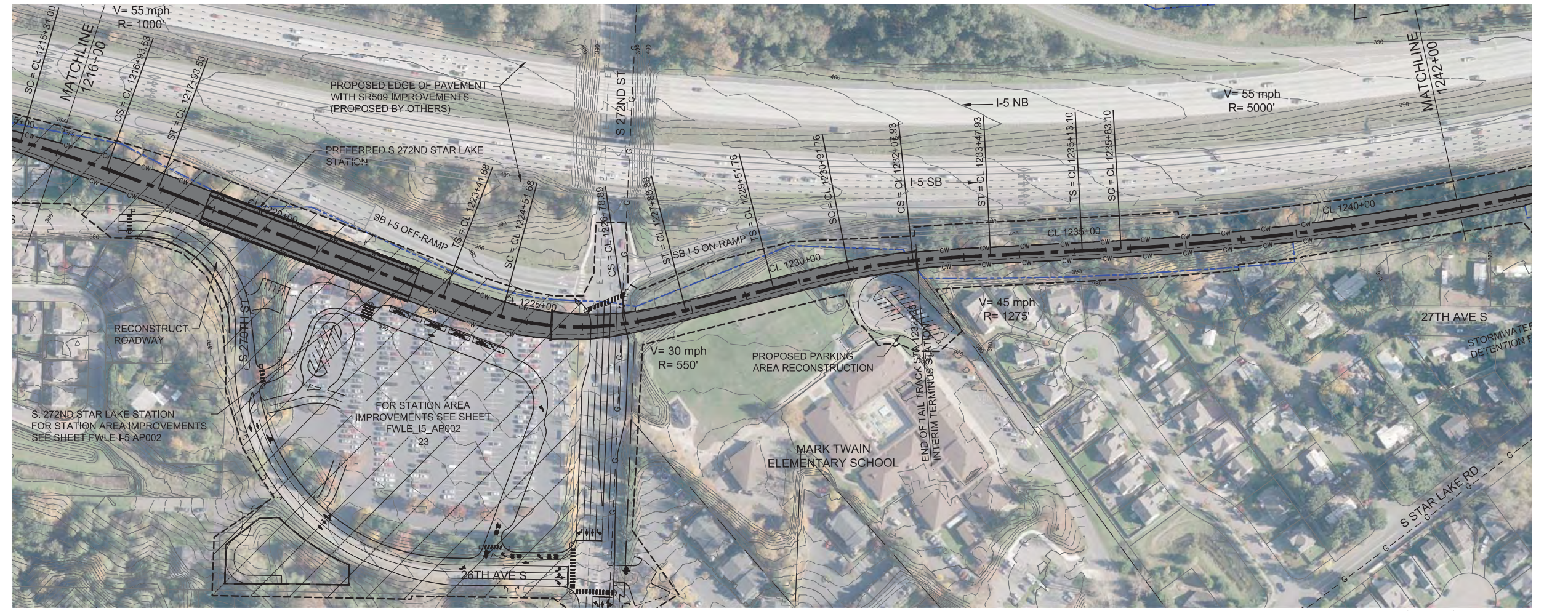


SOUND TRANSIT FEDERAL WAY LINK EXTENSION



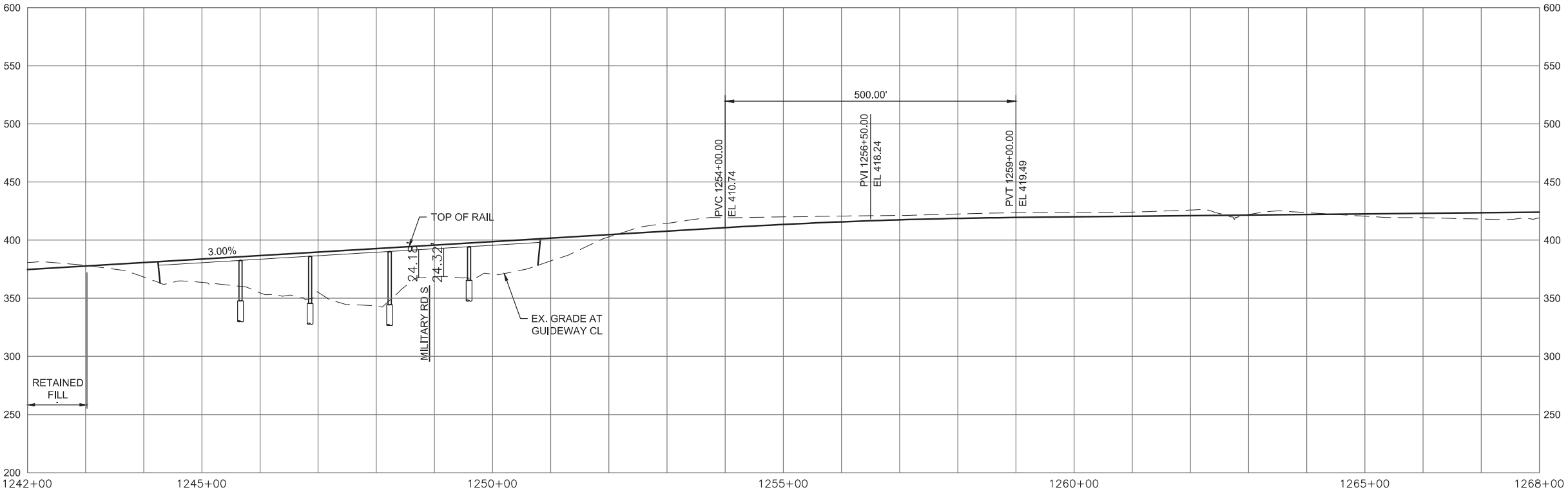
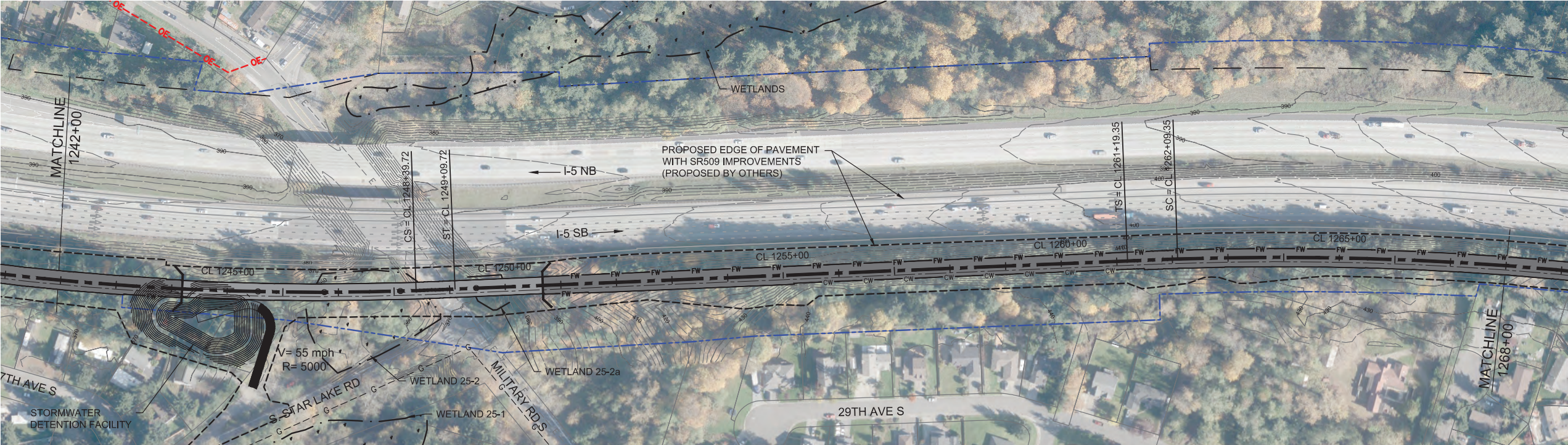
9/30/2016 11:38:13 AM
C:\P\WORKING\SEAID\078842A\FWLE_I-5_MAINLINE.DWG



FINAL EIS - CONCEPTUAL DESIGN
TRACK PLAN & PROFILE AND ROADWAY RECONSTRUCTION
PREFERRED ALTERNATIVE
STA 1216+00 TO STA 1242+00

AUGUST 2016
I5-A10-PP10
13

SOUND TRANSIT FEDERAL WAY LINK EXTENSION



10/31/2016 4:32:32 PM
C:\P\WORKING\SEAD\1078842A\FWLE I-5 MAINLINE.DWG

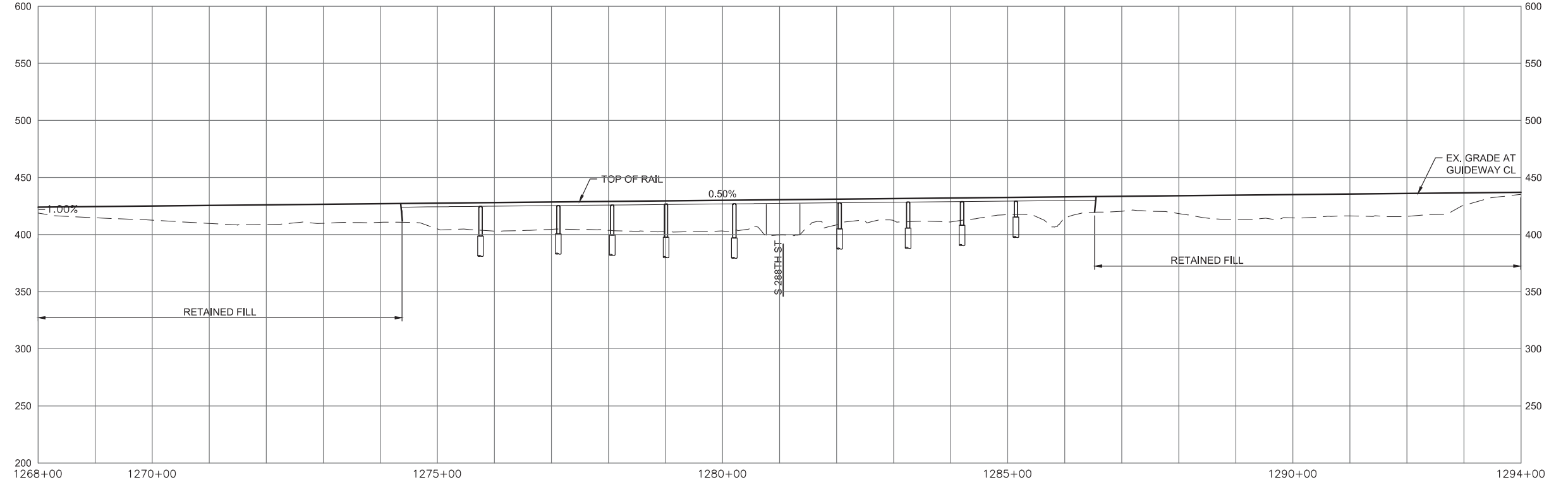
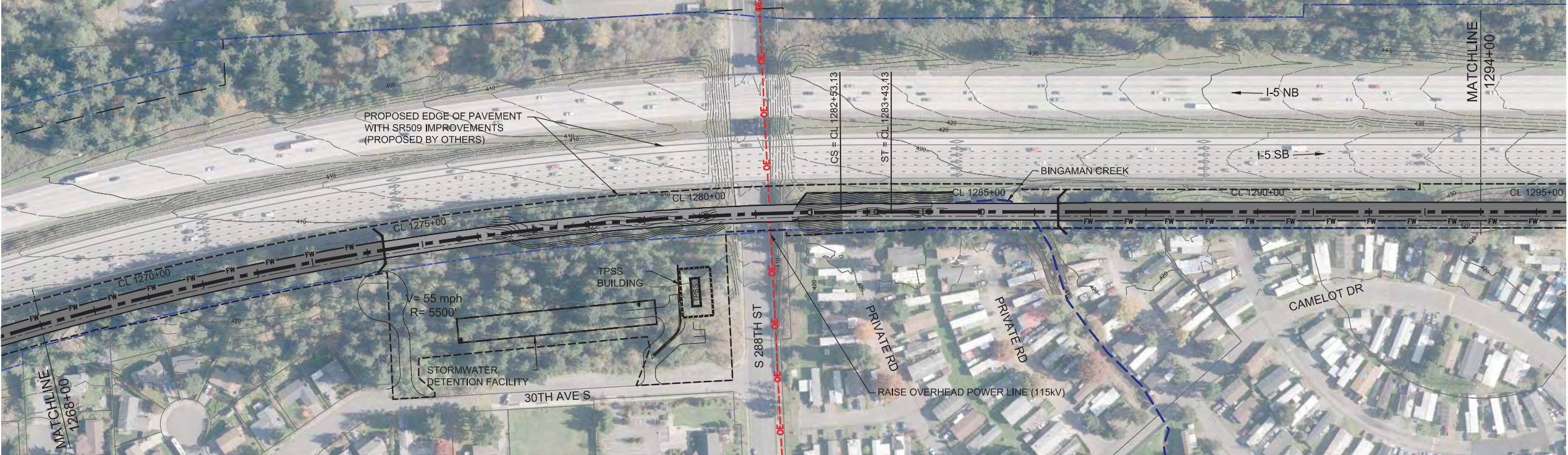


FINAL EIS - CONCEPTUAL DESIGN
TRACK PLAN & PROFILE AND ROADWAY RECONSTRUCTION
PREFERRED ALTERNATIVE
STA 1242+00 TO STA 1268+00

AUGUST 2016

I5-A11-PP11
14

SOUND TRANSIT FEDERAL WAY LINK EXTENSION



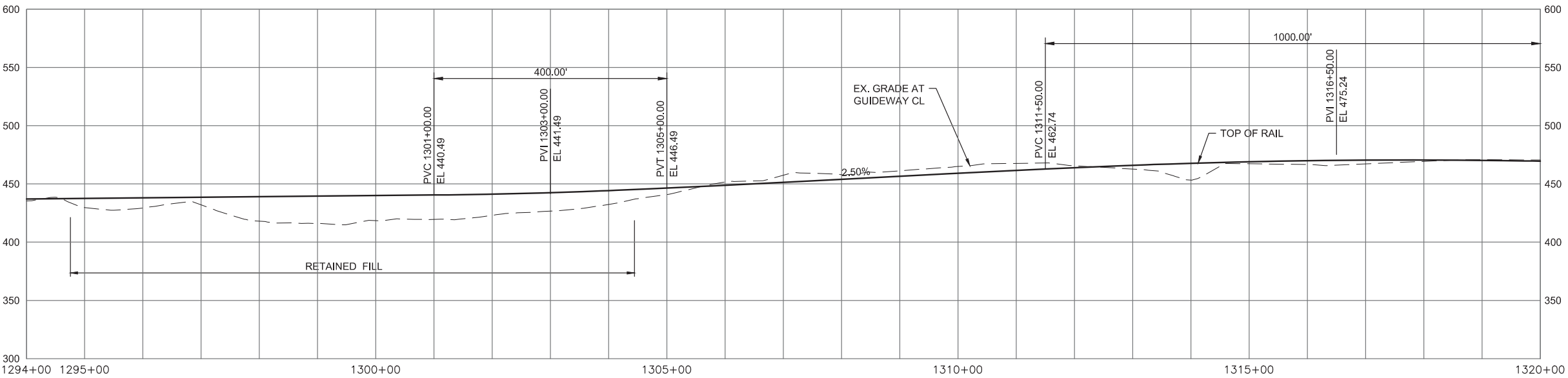
9/30/2016 11:38:48 AM
C:\P\WORKING\SEA\107842A\FWLE-I-5 MAIN LINE.DWG



FINAL EIS - CONCEPTUAL DESIGN
TRACK PLAN & PROFILE AND ROADWAY RECONSTRUCTION
PREFERRED ALTERNATIVE
STA 1268+00 TO STA 1294+00

AUGUST 2016
I5-A12-PP12
15

SOUND TRANSIT FEDERAL WAY LINK EXTENSION



9/30/2016 11:39:07 AM
C:\P\WORKING\SEA\107842A\FWLE-I-5 MAIN LINE.DWG

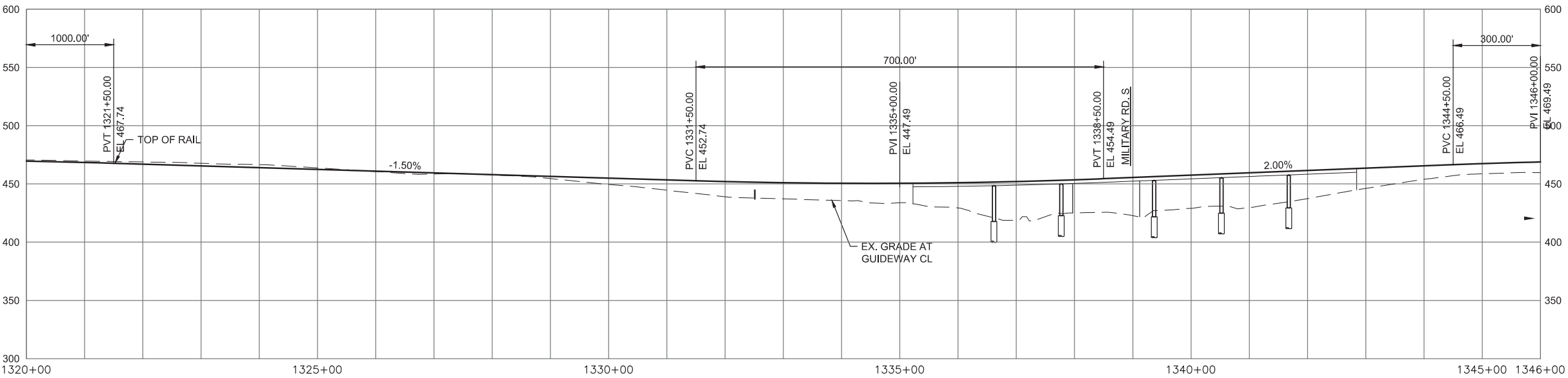
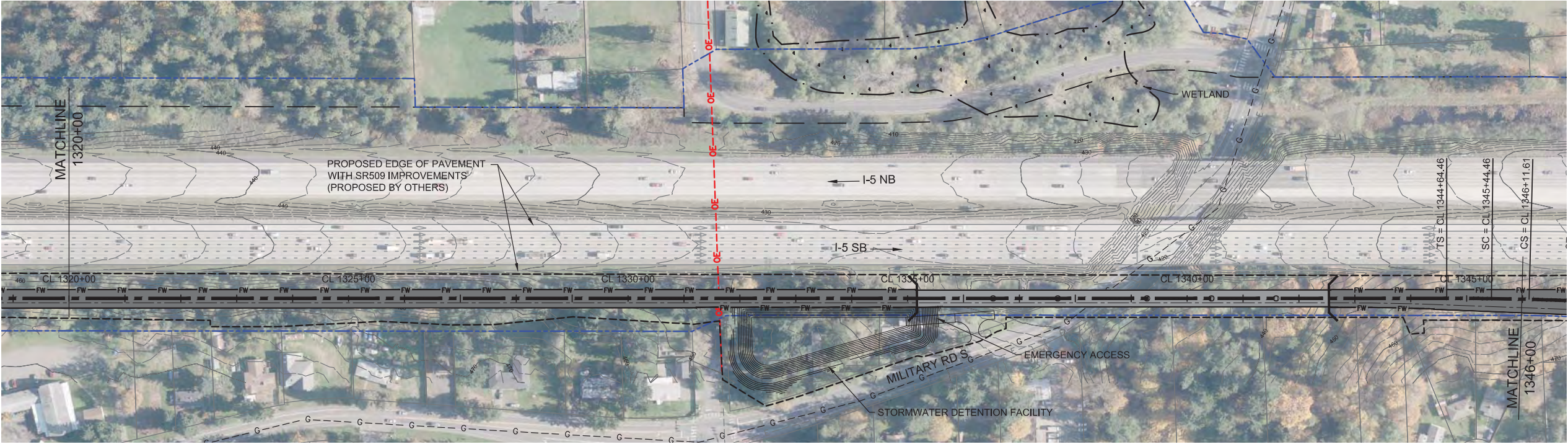


FINAL EIS - CONCEPTUAL DESIGN
TRACK PLAN & PROFILE AND ROADWAY RECONSTRUCTION
PREFERRED ALTERNATIVE
STA 1294+00 TO STA 1320+00

AUGUST 2016

I5-A13-PP13
16

SOUND TRANSIT FEDERAL WAY LINK EXTENSION



9/30/2016 11:39:23 AM
C:\P\WORKING\SEA\107845A\FWLE-I-5 MAIN LINE.DWG

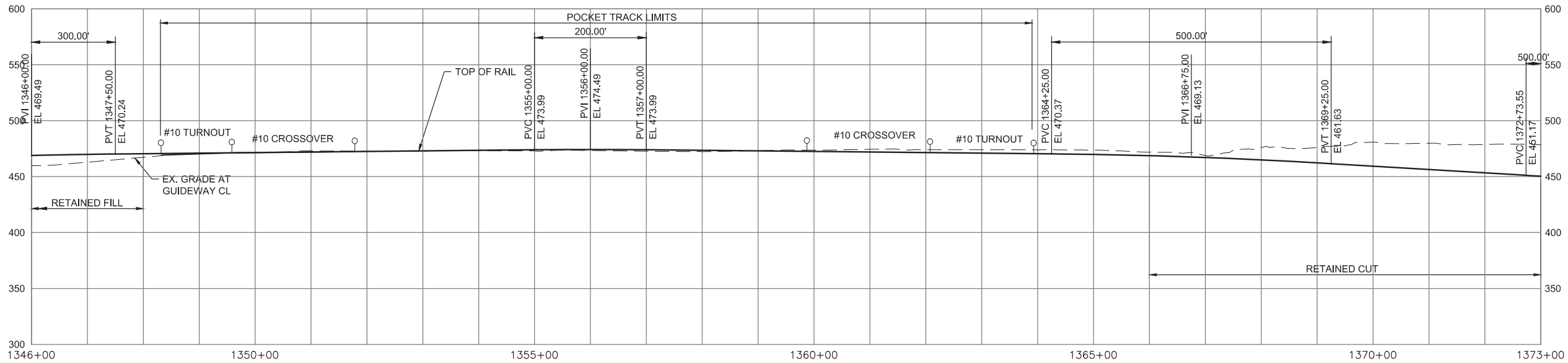
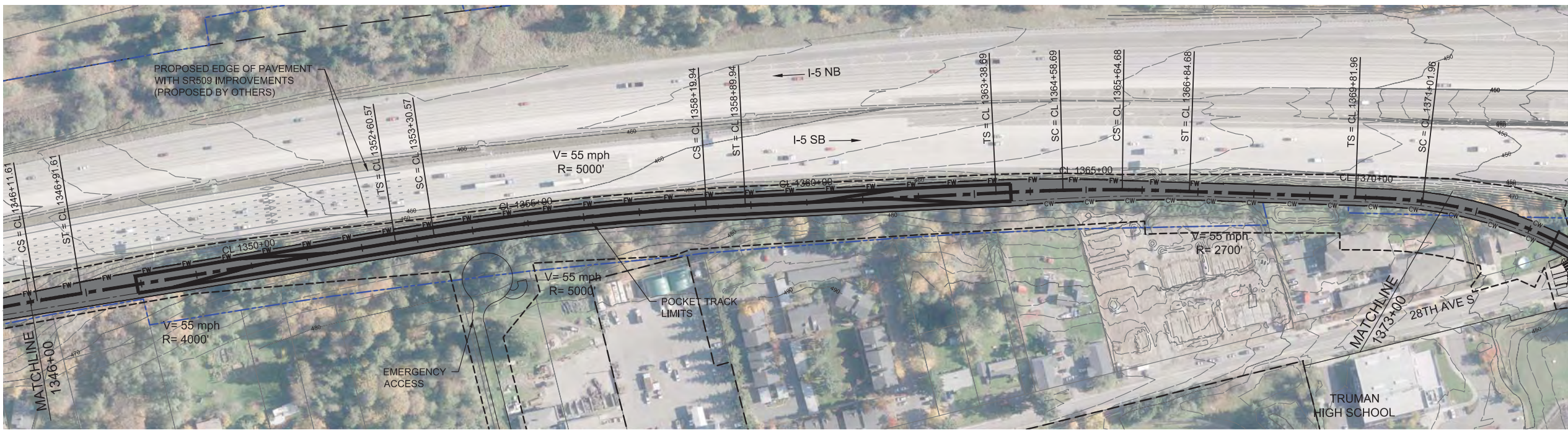


FINAL EIS - CONCEPTUAL DESIGN
TRACK PLAN & PROFILE AND ROADWAY RECONSTRUCTION
PREFERRED ALTERNATIVE
STA 1320+00 TO STA 1346+00

AUGUST 2016

I5-A14-PP14
17

SOUND TRANSIT FEDERAL WAY LINK EXTENSION



10/4/2016 3:19:00 PM
C:\P\WORKING\SEAID\078842A\FWLE-I-5 MAINLINE.DWG

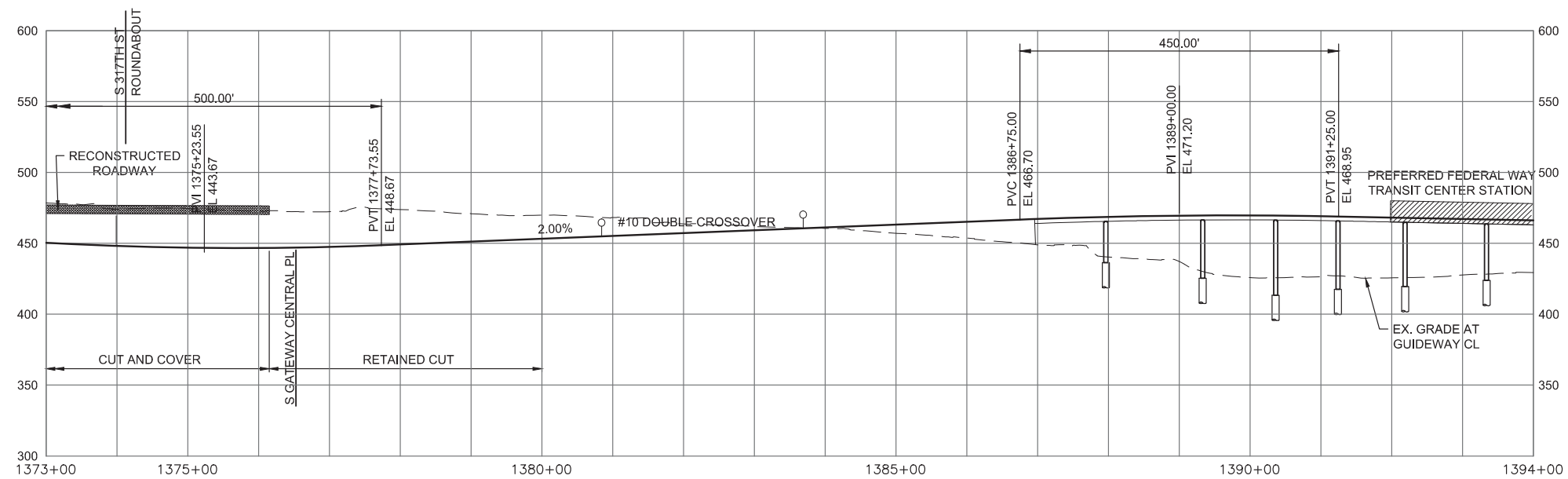
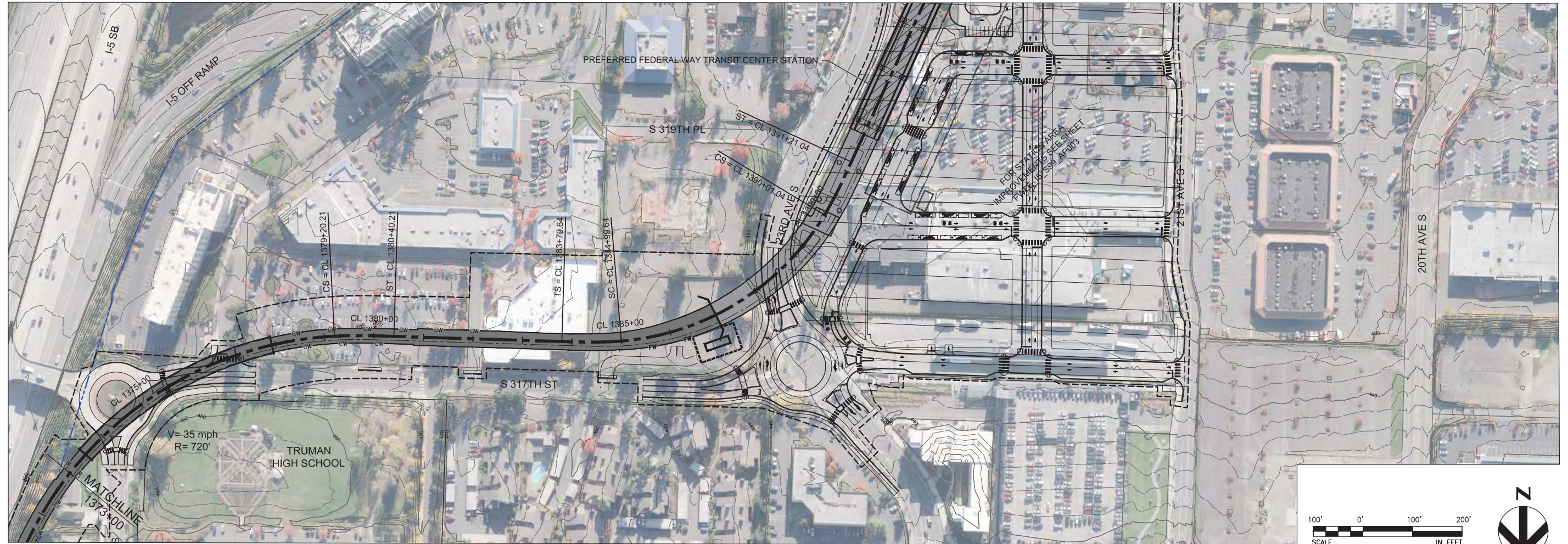


FINAL EIS - CONCEPTUAL DESIGN
TRACK PLAN & PROFILE AND ROADWAY RECONSTRUCTION
PREFERRED ALTERNATIVE
STA 1346+00 TO STA 1373+00

AUGUST 2016

I5-A15-PP15
18

SOUND TRANSIT FEDERAL WAY LINK EXTENSION



9/30/2016 11:39:57 AM FOXC
C:\P\WORKING\SEAD1078842\A FWLE I-5 MAINLINE.DWG

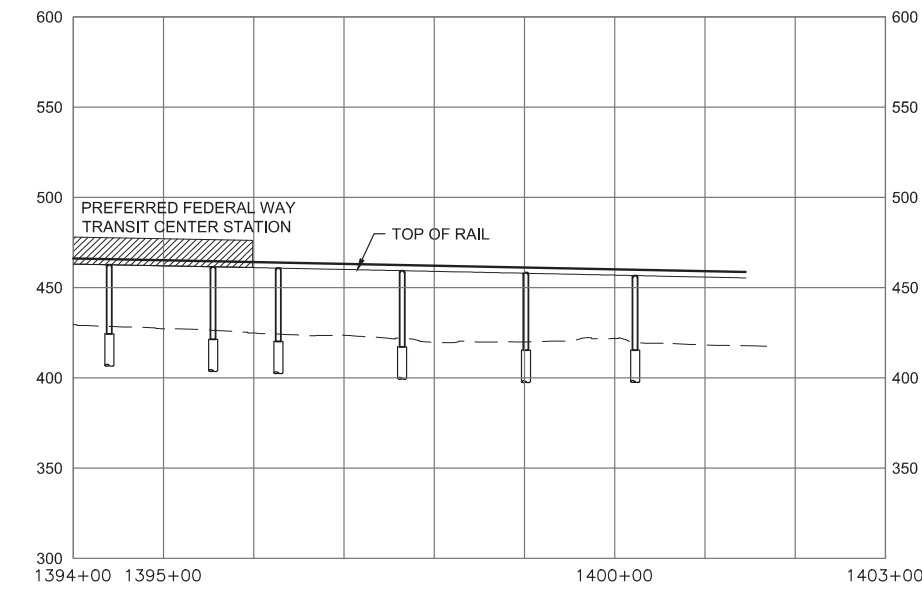
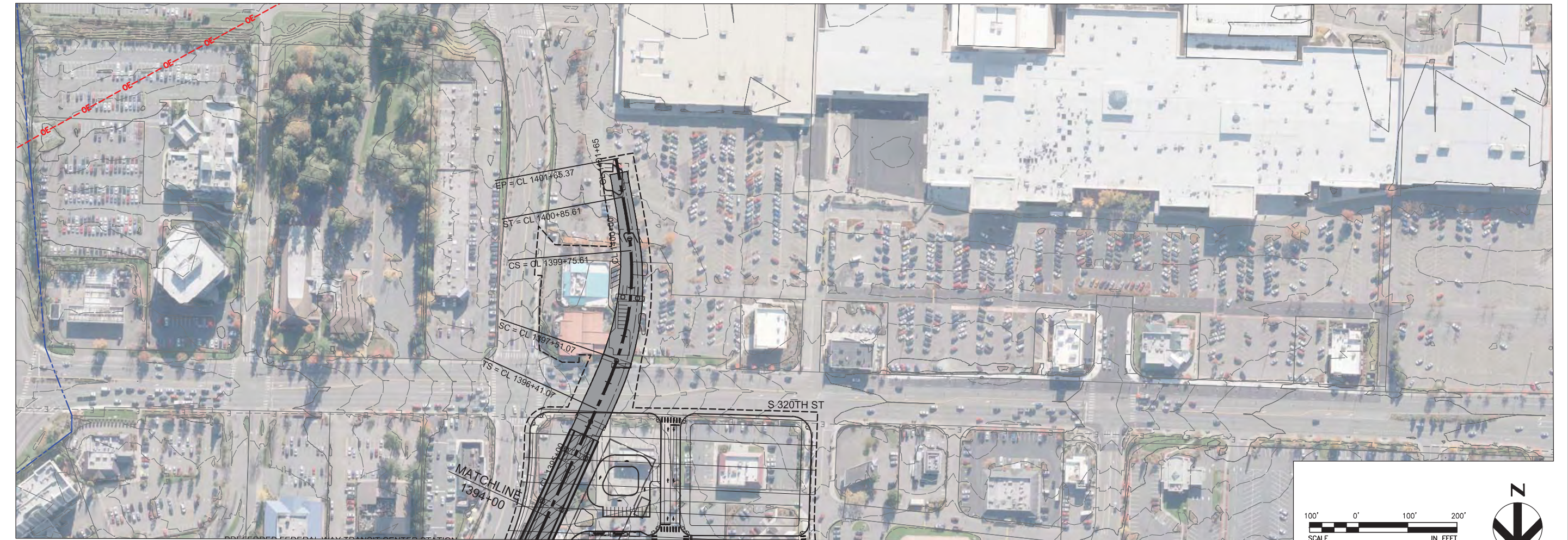


FINAL EIS - CONCEPTUAL DESIGN
TRACK PLAN & PROFILE AND ROADWAY RECONSTRUCTION
PREFERRED ALTERNATIVE
STA 1373+00 TO 1394+00

AUGUST 2016

I5-A17-PP16
19

SOUND TRANSIT FEDERAL WAY LINK EXTENSION



FINAL EIS - CONCEPTUAL DESIGN
TRACK PLAN & PROFILE AND ROADWAY RECONSTRUCTION
PREFERRED ALTERNATIVE
STA 1394+00 TO 1401+65.37

AUGUST 2016

I5-A17-PP17
20

SOUND TRANSIT FEDERAL WAY LINK EXTENSION

ASSUMPTIONS:

Preferred Kent/ Des Moines Station	
Alternative(s)	Preferred
Boardings	3,500
Boardings (Interim terminus)	6,000
Station Configuration	
Terminus/ In-Line	Terminus
Station Type	Center Platform-Elevated
Platform Width	34'
Tail Track	900'
Crossover	Yes
TPSS	Yes
Program	
KC Metro Ancillary Spaces (SF)	200
ST Ancillary Spaces (SF)	2,800
Total Ancillary Spaces (SF)	3,000
Vertical Circulation	
# of entrances	2
# of escalators	2
# of staircases (patron)	2
# of elevators	2
# of emergency stairs	2
Bus/ Paratransit Facilities	
Bus Bays (KCM)	4 bays, two 60' & two 40' coaches
Bus Bays (ST)	1 bay, one 60' coach
Rapid Ride	On-street at SR 99(each side)
Bus Layover (KCM)	2 bays, two 60' coaches
Bus Layover (ST)	1 bay, two 40' coaches
Paratransit	1 permanent, 1 interim
Communication Facility	Tier 2
Parking & Amenities	
Bike Cage	900 SF
Patron Drop-off	6 spaces
Short-term Patron Parking	7 to 10 spaces
Staff Parking	4 spaces
Service/emerg. vehicle park.	2 spaces, separate lot
Signal bungalow/ TPSS park.	2 spaces, dedicated
Long-term patron parking	500 spaces (structure)
Temporary patron parking*	500 spaces (surface)
Total Proposed Patron Parking	1,000 spaces

* only required for interim terminus condition

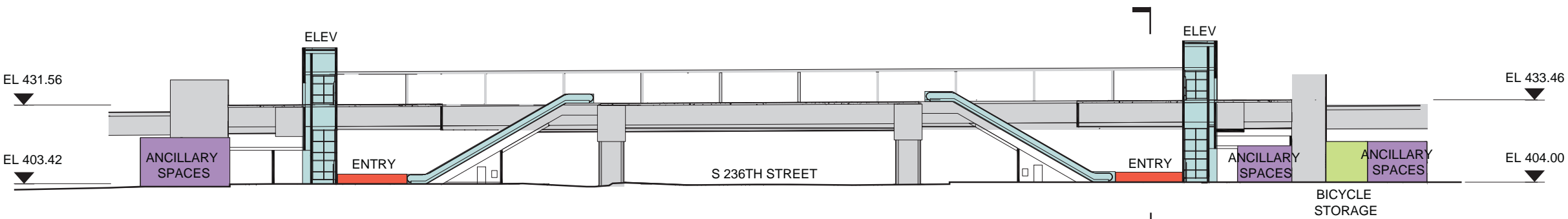


EIS - CONCEPTUAL DESIGN
PREFERRED KENT/DES MOINES STATION
SITE PLAN

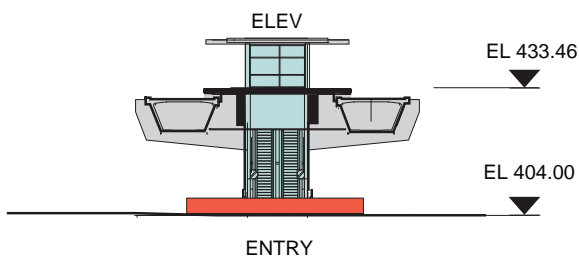
AUGUST 2016

FWLE_I5_AP001
21

SOUND TRANSIT FEDERAL WAY LINK EXTENSION



SECTION LOOKING EAST



SECTION LOOKING NORTH

- | | |
|---|---|
|  STATION PLAZA |  BUS LAYOVER |
|  VERTICAL CIRCULATION |  BUS PICK-UP/ DROP OFF |
|  TICKETING/ ENTRY HALL |  PARATRANSIT |
|  PLATFORM |  BICYCLE STORAGE |
|  ANCILLARY SPACES |  CONSTRUCTION STAGING/ PARKING |
|  TPSS | |



EIS - CONCEPTUAL DESIGN

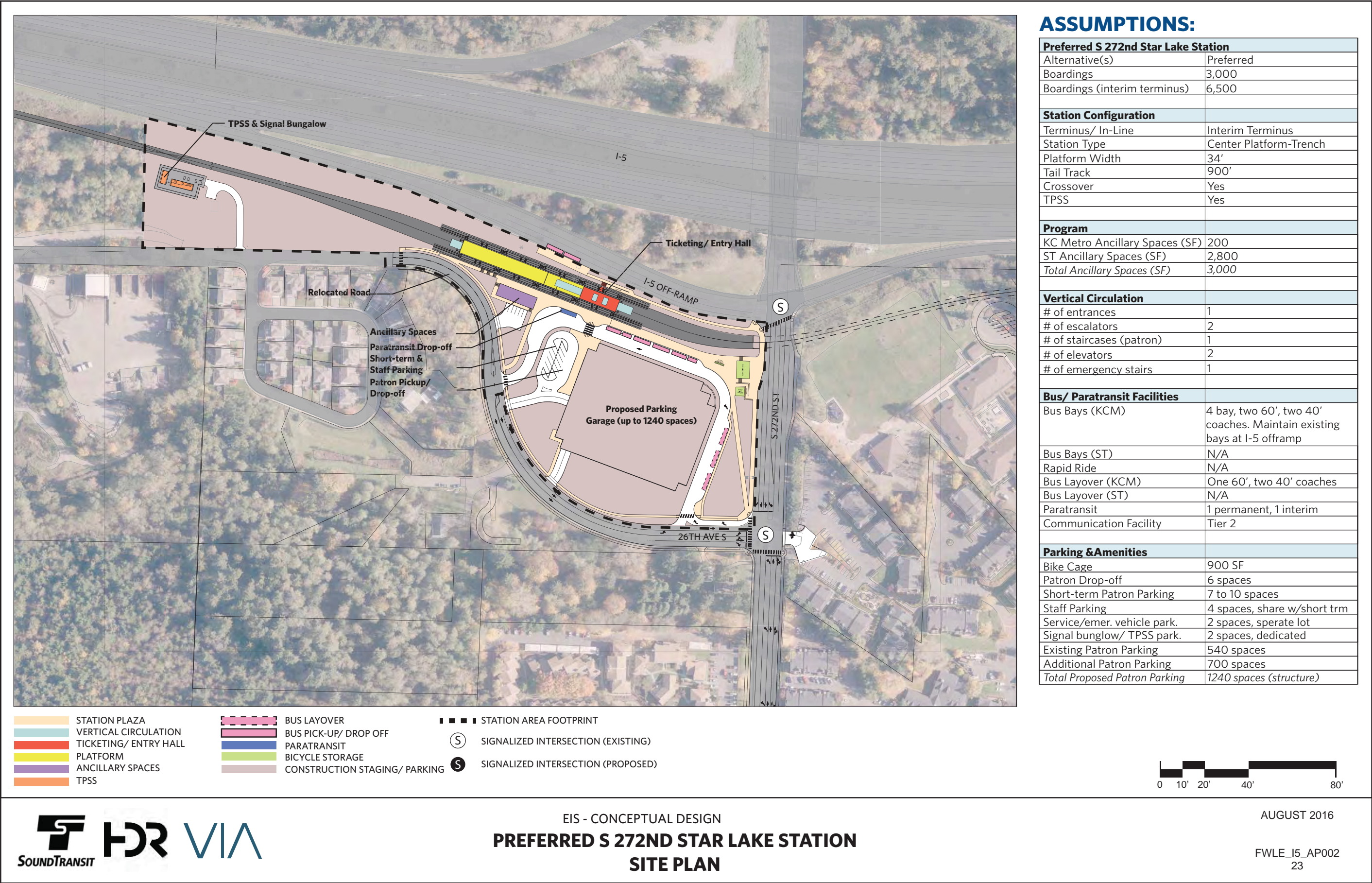
PREFERRED KENT/DES MOINES STATION

SECTIONS

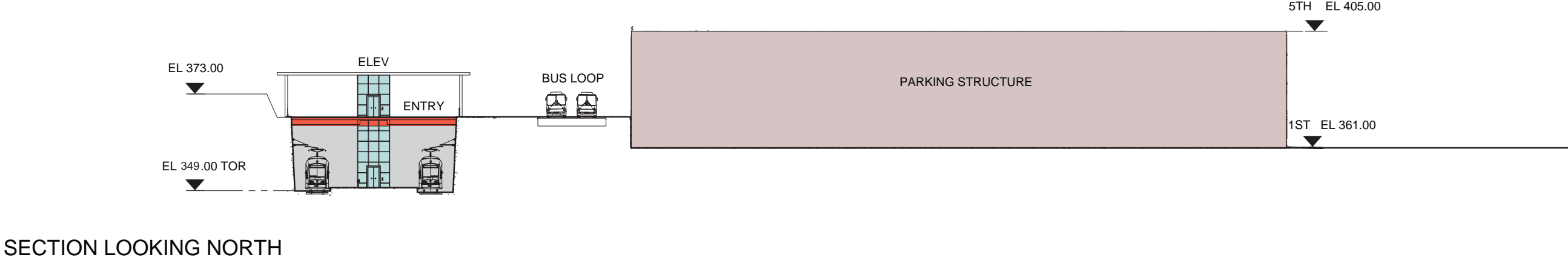
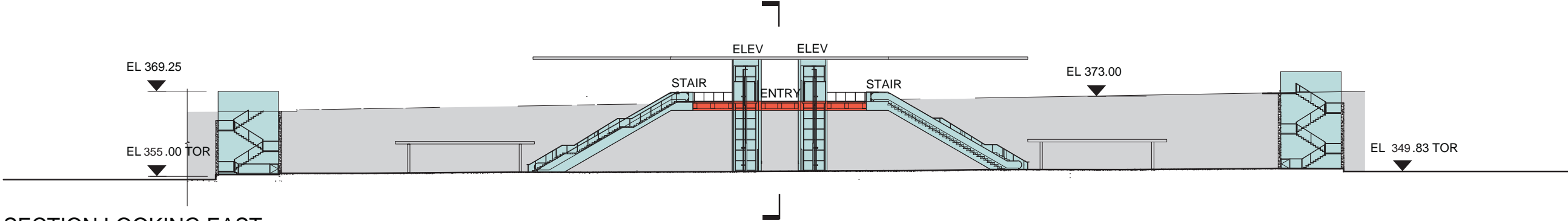
AUGUST 2016

FWLE_I5_AX001
22

SOUND TRANSIT FEDERAL WAY LINK EXTENSION



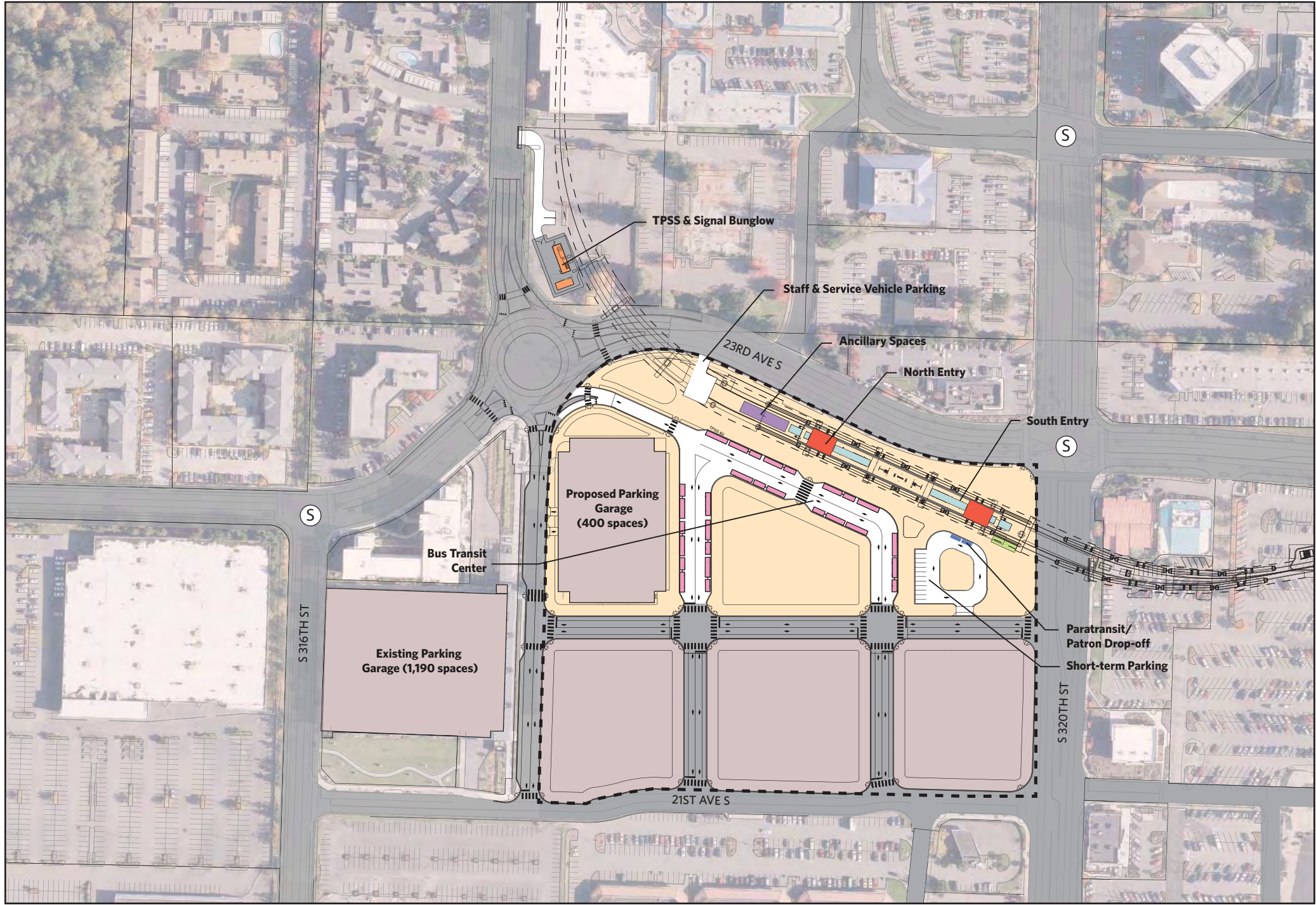
SOUND TRANSIT FEDERAL WAY LINK EXTENSION



- STATION PLAZA
- VERTICAL CIRCULATION
- TICKETING/ ENTRY HALL
- PLATFORM
- ANCILLARY SPACES
- TPSS
- BUS LAYOVER
- BUS PICK-UP/ DROP OFF
- PARATRANSIT
- BICYCLE STORAGE
- CONSTRUCTION STAGING/ PARKING



SOUND TRANSIT FEDERAL WAY LINK EXTENSION



- STATION PLAZA

VERTICAL CIRCULATION

TICKETING/ ENTRY HALL

PLATFORM

ANCILLARY SPACES

TPSS
- BUS LAYOVER

BUS PICK-UP/ DROP OFF

PARATRANSIT

BICYCLE STORAGE

CONSTRUCTION STAGING/ PARKING
- STATION AREA FOOTPRINT

S

SIGNALIZED INTERSECTION (EXISTING)

S

SIGNALIZED INTERSECTION (PROPOSED)

ASSUMPTIONS:

Preferred Federal Way Transit Center Station	
Alternative(s)	Preferred
Boardings	12,500
Station Configuration	
Terminus/ In-Line	Terminus
Station Type	Center Platform-Aerial
Platform Width	34'
Tail Track	900'
Crossover	Yes
TPSS	Yes
Program	
KC Metro Ancillary Spaces (SF)	200
ST Ancillary Spaces (SF)	2,800
Total Ancillary Spaces (SF)	3,000
Vertical Circulation	
# of entrances	2
# of escalators	4
# of staircases (patron)	0
# of elevators	2
# of emergency stairs	2
Bus/ Paratransit Facilities	
Bus Bays (KCM)	7 bays, eleven 60' and six 40'coaches
Bus Bays (ST)	Shared
Rapid Ride	Shared
Bus Layover (KCM)	6 bays on S 317th St
Bus Layover (ST)	3 bays on S 317th St
Paratransit	2 Spaces
Communication Facility	Tier 3
Parking & Amenities	
Bike Cage	900 SF
Patron Drop-off	6 spaces
Short-term Patron Parking	7 to 10 spaces
Staff Parking	4 spaces
Service/emerg. vehicle park.	2 spaces
Signal bungalow/ TPSS park.	2 spaces, dedicated
Existing Patron Parking	1,190 spaces
Additional Patron Parking	400 spaces
Total Proposed Patron Parking	1590 spaces (structure)

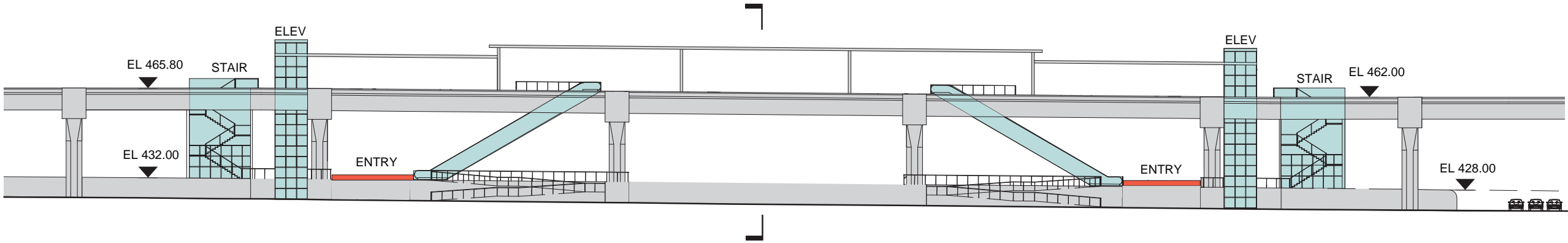


EIS - CONCEPTUAL DESIGN
PREFERRED FEDERAL WAY TRANSIT CENTER STATION
SITE PLAN

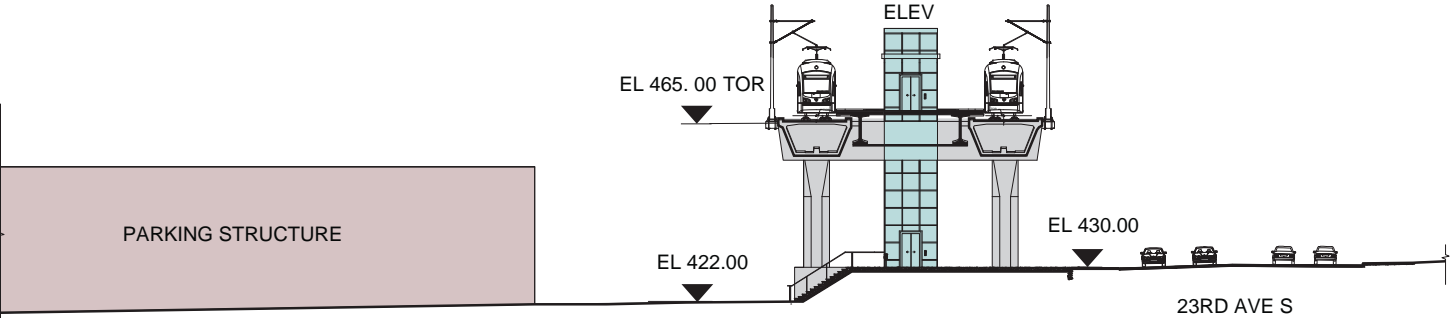
AUGUST 2016

FWLE_I5_AP003
25

SOUND TRANSIT FEDERAL WAY LINK EXTENSION

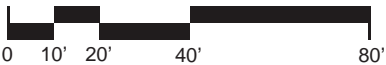


SECTION LOOKING EAST



SECTION LOOKING NORTH

- | | |
|---|---|
|  STATION PLAZA |  BUS LAYOVER |
|  VERTICAL CIRCULATION |  BUS PICK-UP/ DROP OFF |
|  TICKETING/ ENTRY HALL |  PARATRANSIT |
|  PLATFORM |  BICYCLE STORAGE |
|  ANCILLARY SPACES |  CONSTRUCTION STAGING/ PARKING |
|  TPSS | |



EIS - CONCEPTUAL DESIGN
**PREFERRED FEDERAL WAY TRANSIT CENTER STATION
 SECTIONS**

AUGUST 2016
 FWLE_I5_AX003
 26