

Progress Report Sounder Program



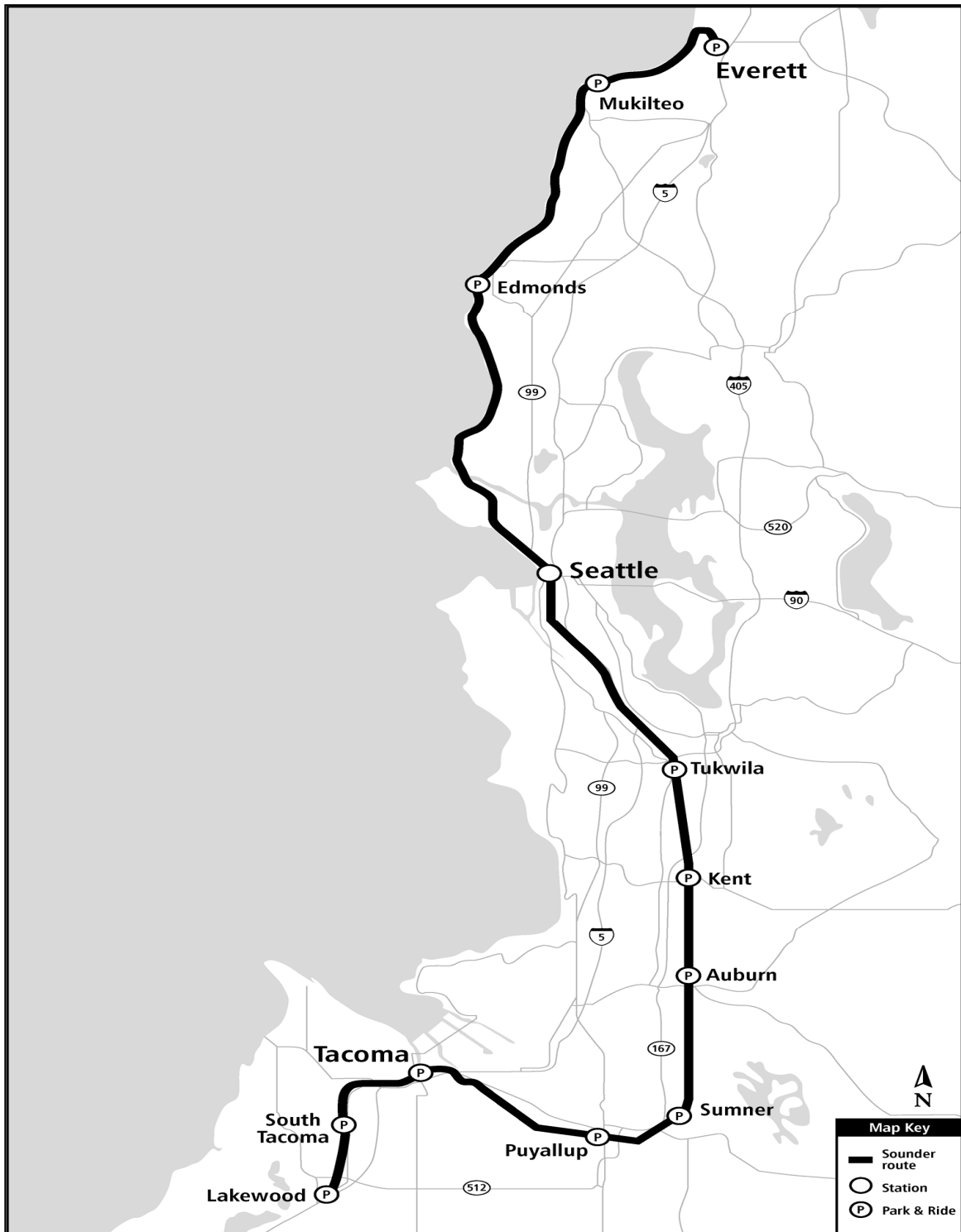
Completing downspouts and other final touches on the Mukilteo Sounder Program new platform.

September | 2015



Prepared by Project Control | Design, Engineering & Construction Management

Sounder Commuter Rail Program Overview



Sounder provides commuter rail service between Everett and Lakewood

Projects

Sounder South Expanded Service: Sound Transit has purchased four additional round trip easements from BNSF to expand service between Seattle and Lakewood. Sound Transit is responsible for completing all the environmental documentation, permitting, and mitigation associated with BNSF construction activity necessary to support those additional round trips. One of the four additional round trips has commenced, timing of the other three is dependent on the environmental work and ridership demand.

Sounder Yard & Shops Facility: Sound Transit is evaluating the need for an operations and maintenance base. Project development activities include confirmation of fleet operations, facilities and site programming, and evaluation of project delivery method.

Sounder Yard Expansion: Additional train service in the Everett-to-Lakewood corridor will require additional train sets and a location to store the trains overnight. The Century yard is being expanded by an additional track to accommodate this need and permanent crew reporting facilities will be incorporated into the design, eliminating the need to lease space.

Positive Train Control: Federal regulations require all passenger train systems be equipped with PTC systems. This necessitates upgrades to Sounder wayside signals, communications, and information management systems along with additional on-board equipment. BNSF is installing wayside elements within the Everett-to-Tacoma corridor. This project includes wayside elements along the Tacoma-to-Lakewood corridor and modifications of locomotives and cab cars for installation of on-board equipment. Congress acted to extend the deadline for implementing PTC to December 2018. Sound Transit will implement PTC operations as early as FRA approvals will allow.

Mukilteo Station, South Platform: Full build-out of this station includes construction of a second platform, overhead pedestrian bridge, elevators, stair tower, and passenger shelters.

Tukwila Station: Construction has been completed of a permanent station and platforms to replace the temporary wooden structure. This project included the construction of a new expanded parking lot, bus loop with passenger shelters, bicycle storage area, new concrete platforms with improved passenger shelters, all sited to accommodate future rail line expansion by BSNF.

Tacoma Trestle Track & Signal: Replacement of existing wooden trestle that is reaching the end of the functional service life with a double track concrete structure. This project will improve overall safety, capacity, and speed in this section of the corridor.

Point Defiance Bypass: Sound Transit will administer the construction of the Point Defiance Bypass project funded by WSDOT, which will construct a new second track adjacent to Sound Transit's existing main line between South Tacoma (66th Street Bridge) and Lakewood (Bridgeport Way) and install new rails, ties, and ballast on Sound Transit's existing track between Lakewood and Nisqually.

Puyallup Station Improvements: Preliminary engineering for access improvements at Puyallup Station. This project was identified for access improvements by the Station Access and Demand Project completed in 2013. Final scope of improvements will be determined at the completion of preliminary engineering.

Sumner Station Improvements: Preliminary engineering for access improvements at Sumner Station. This project was identified for access improvement by the Station Access and Demand Project completed in 2013. Final scope of improvements will be determined at the completion of preliminary engineering.

Program Cost Summary

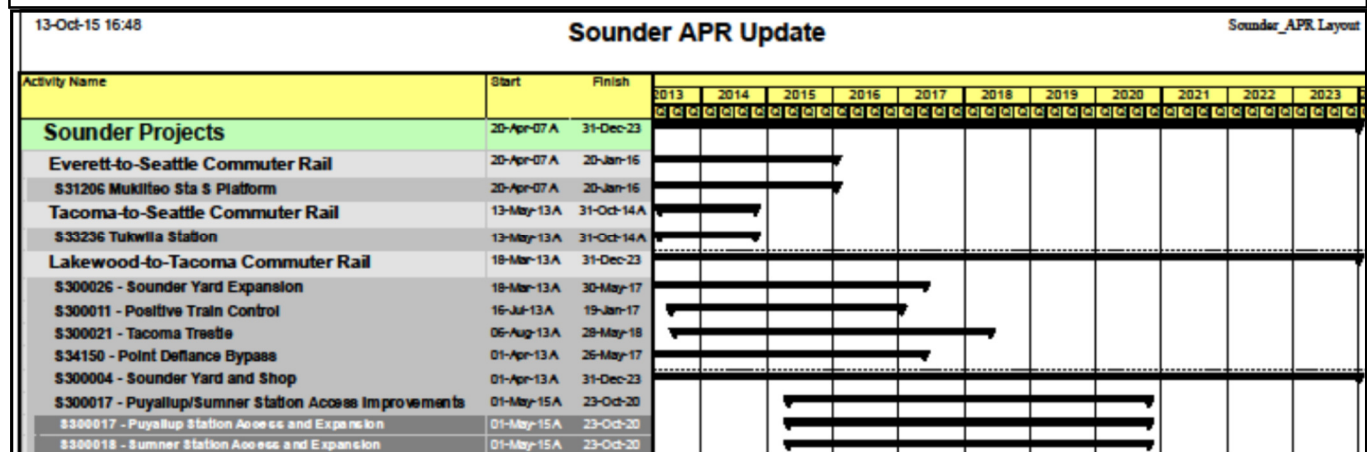
The Program Cost Summary information by project is summarized below. The Adopted Budget reflects the Lifetime Budget for each project through the approved project phase. Meaning that for projects approved for Final Design activities only, the Lifetime Budget will be amended at some point to add budget for construction activities. Further information can be found in the following project pages.

SOUNDER	Adopted Lifetime Budget	Commitment to Date	Incurred to Date	Forecast to Complete	Estimated Final Cost	Adopted Budget vs EFC
SOUNDER YARD & SHOPS FACILITY	\$ 6.3	\$ 2.5	\$ 1.9	\$ 3.8	\$ 6.3	\$ -
POSITIVE TRAIN CONTROL	\$ 53.1	\$ 42.6	\$ 27.9	\$ 11.8	\$ 53.1	\$ -
PUYALLUP STATION IMPROVEMENTS	\$ 3.5	\$ 2.6	\$ 1.5	\$ 0.9	\$ 3.5	\$ -
SUMNER STATION IMPROVEMENTS	\$ 6.5	\$ 5.4	\$ 4.3	\$ 1.0	\$ 6.5	\$ -
TACOMA TRESTLE TRACK & SIGNAL	\$ 120.5	\$ 21.8	\$ 17.4	\$ 101.9	\$ 120.5	\$ -
SOUNDER YARD EXPANSION	\$ 20.6	\$ 3.2	\$ 1.9	\$ 18.1	\$ 20.6	\$ -
PT DEFIANCE BYPASS	\$ 128.0	\$ 57.0	\$ 1.1	\$ 126.1	\$ 128.0	\$ -
MUKILTEO STATION-S PLATFORM	\$ 18.3	\$ 14.0	\$ 14.1	\$ 4.6	\$ 18.3	\$ -
TUKWILA STATION	\$ 46.0	\$ 37.9	\$ 36.8	\$ 1.2	\$ 40.4	\$ 5.6
SOUNDER SOUTH EXPANDED SERVICE	\$ 202.0	\$ 194.2	\$ 194.1	\$ 7.8	\$ 202.0	\$ -
Total SOUNDER	\$ 604.7	\$ 381.3	\$ 300.8	\$ 277.2	\$ 599.1	\$ 5.6

Table figures in millions.

Program Schedule

Schedule for active projects are summarized below. Further information can be found in the following project pages.



Third-Party Agreements

WSDOT / Amtrak / FRA

- Negotiations have concluded for a Service Outcomes Agreement (SOA) and Stakeholder Agreement for investment of High-Speed Passenger Rail grant money into the corridor. The SOA captures Sound Transit's commitment to continued maintenance and operation of the corridor, and the Stakeholder Agreement provides funding to be applied to the completed construction on the D Street-to-M Street project and the Point Defiance Bypass project.

City of Tacoma

- Sound Transit has completed the transfer to the City of Tacoma of surplus properties acquired for the D Street-to-M Street project not needed for Sounder operations. The transfer occurred as part of the purchase and sale agreement for the reservation connector rail right-of-way.
- Work Order Agreement - City of Tacoma to conduct design review services and construction inspection services for the Tacoma Trestle & Signal project. City plans to review and comment on ST's 60%, 90%, and 100% IFB design submittals. City will review only sections that impact City of Tacoma's public right-of-way; includes sanity sewer relocation.

FTA / WA. Dept. of Archeology and Historical Preservation

- Environmental MOA - Federal Transit Administration (FTA) the responsible Federal agency is providing federal financial assistance for the Tacoma Trestle Track & Signal. The grant administrator has determined that the project is an undertaking as defined in Title 36 Code of Federal Regulation (CFR) §800.16(y), and thus is subject to review under the Section 106 of the National Historic Preservation Act (NHPA), 16 U.S.C §470 (Section 106) and its implementing regulations, 36 CFR Part 800. FTA and the State Historic Preservation Officer determined the existing Tacoma Trestle eligible for listing in the National Register of Historic Places, triggering mitigation for its demolition.

WSDOT

- Construction and Maintenance - Funding of projects on Sound Transit owned property, including a \$21M contribution to the D-to-M Street Track and Signal project, and 100% funding of the Pt. Defiance Bypass project. For Tacoma Trestle, WSDOT will provide funding for Sound Transit to construct and maintain the platform extension.
- CE and PE Cost Reimbursement - WSDOT wishes to extend the passenger platform at the Freighthouse Station onto the Bridge in order to accommodate the length of Amtrak trains that will use the Station.
- Final Design Cost Reimbursement - WSDOT is to reimburse Sound Transit for the associated design consultant services and other expenditures to complete final design of the extended platform, necessary to accommodate the longer Amtrak trains at their Freighthouse Square Station.

Sprint

- Cost Reimbursement - Sound Transit and Sprint have reached an agreement for Sprint to temporarily relocate their facilities, then permanently relocate their facilities back onto ST's new bridge. ST and Sprint are negotiating final cost reimbursement fee. The agreement will cover expenditures for design and construction activities related to the temporary relocation. A subsequent agreement will be developed for the design work and construction for the permanent relocation of their facilities.

Construction Safety

Currently there are two Agency-led active construction contracts under the Sounder program:

- Mukilteo Station, South Platform
- Point Defiance By-Pass

No accidents or incidents were reported during this period.

Quality Assurance

Quality Assurance continues to support the Sounder program through review of design and construction documents and periodic audits of projects in design, constructions, and operations.

Description	3rd Quarter 2015	Notes
Audits/Surveillances Performed	0 Audits 0 Surveillances	None
Audits/Surveillances Reports Issued	1 Audit 0 Surveillances	A-D-SND-TacomaTrestle-15-01 90% Design Submittal (4 Findings, 6 Observations)
Reports in Progress	0 Reports	None
Audits/Surveillances Rescheduled	0 Audits 0 Surveillances	None

Sound Transit Board Actions

Board motions and resolutions directly related to Sounder Program approved this period are summarized in the table.

Motion Number	Description	Date
M2015-61	On-Call Flagging Services for Sound Transit's Railroad Right-of-Way	07/09/15
M2015-65	Contract for Sounder Trackwork and Equipment for the Tacoma Trestle Track & Signal, Point Defiance Bypass, and Sounder Yard Expansion	07/09/15
M2015-75	Amendment to WSDOT Cost Reimbursement Agreement for Final Design for the WSDOT Point Defiance Bypass Project platform extension	08/13/15
M2015-76	Contract Amendment for Additional Final Design Services for Tacoma Trestle Track & Signal Project	08/27/15
M2015-78	Construction Services for the Point Defiance Bypass Project	08/27/15
M2015-90	Amend Contract for Construction Management Services for the Sounder Point Defiance Bypass, Tacoma Trestle Track & Signal, and Sounder Yard Expansion Projects	08/24/15

This page intentionally left blank.

Scope

Purchase of four additional commuter rail easements from BNSF for expanding service between Seattle and Lakewood. A number of track and signal improvements are needed between Seattle and Tacoma to accommodate additional service.

BNSF is currently completing design improvements and intends to incrementally complete construction as additional service is added. Additional round trips are planned for 2016 and 2017.



Additional morning and evening service between Seattle and Lakewood

Schedule

	Start	Finish
Prelim. Engineering	Oct 2010	Mar 2012
Final Design	Aug 2011	TBD
Construction	TBD	Sep 2017

Scope/Schedule/Budget Variance

None to report this period.

Major Contracts (\$s in thousands)

Vendor	Amount	Scope
ESA Adolphson	\$416	PE

Project Cost (\$s in thousands)

Phase	Lifetime Budget	Commitment to Date	Incurred to Date
Administration	\$ 5,650	\$ 1,069	\$ 1,069
Preliminary Engineering	\$ 1,007	\$ 532	\$ 440
Final Design	\$ 400	\$ -	\$ -
Third Party Agreements	\$ -	\$ -	\$ -
ROW Acquisition and Permits	\$ 186,485	\$ 185,182	\$ 185,182
Construction	\$ 8,426	\$ 7,405	\$ 7,405
Construction Services	\$ -	\$ -	\$ -
Project Total	\$ 201,968	\$ 194,188	\$ 194,096

Key Project Activities

Current Period

- Notified BNSF that all required environmental clearances have been obtained.
- BNSF can begin the next steps for construction along the Kent and Auburn corridor.
- Started construction for the Easement 3 corridor between Tukwila and Kent.

Next Period

- Continue work with Army Corps of Engineers, Tribes, and King County to reach concurrence on proposed site in King County to design and construct a new culvert for fish passage along the Easement 4 corridor.

Closely Monitored Issues

- Negotiation with permitting agencies on culvert replacement continues. ST and the permitting agencies will need to reach concurrence on a culvert replacement option by year-end 2015.

Sounder Commuter Rail Sounder Yard & Shops Facility



Scope

Final planning and analysis, environmental clearance and preliminary engineering for yard and shop operations and maintenance facilities to support expanded Sounder service.

Preliminary project development activities (final planning, revised cost estimating and preliminary siting studies) have been completed; environmental analysis continues.



Amtrak currently provides Sounder vehicle maintenance

Schedule

	Start	Finish
Prelim. Engineering	Apr 2016	TBD
Final Design	TBD	TBD
Construction	TBD	TBD

Scope/Schedule/Budget Variance

None to report this period.

Major Contracts (\$s in thousands)

Vendor	Amount	Scope
Parsons Brinckerhoff	\$2,300	PE/ED

Project Cost (\$s in thousands)

Phase	Lifetime Budget	Commitment to Date	Incurred to Date
Administration	\$ 860	\$ 326	\$ 330
Preliminary Engineering	\$ 5,116	\$ 2,153	\$ 1,503
Final Design	\$ -	\$ -	\$ -
Third Party Agreements	\$ -	\$ -	\$ -
ROW Acquisition and Permits	\$ 305	\$ 37	\$ 37
Construction	\$ -	\$ -	\$ -
Construction Services	\$ -	\$ -	\$ -
Project Total	\$ 6,281	\$ 2,516	\$ 1,870

Key Project Activities

Current Period

- Transmitted the updated conceptual engineering design submittal for ST's review and comments.
- Continued work on environmental assessment.
- Begin evaluation of project procurement delivery method for the design and construction phase.
- Held coordination meeting with the City of Lakewood to discuss project's next steps.

Next Period

- Meet with City of Tacoma's power department to discuss the identified impacts to Tacoma Power's facilities.

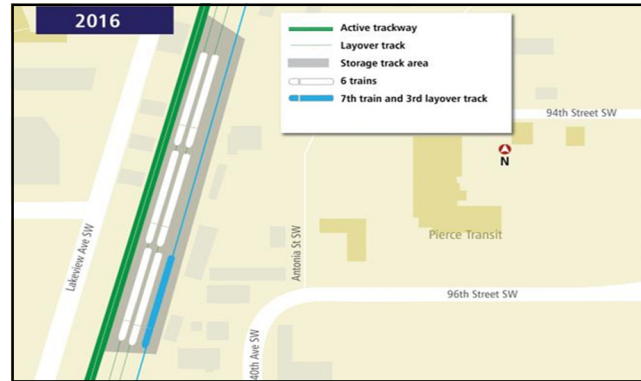
Closely Monitored Issues

- Real Estate has been informed that a key vacant parcel for the project may be commercially developed by the property owner.

Scope

The Sounder Yard Expansion project includes design and construction of a third storage track and civil improvements to accommodate seven Sounder train sets at the Lakewood layover facility.

This additional storage capacity is necessary when additional Sounder South trains, approved in ST2, begin between Tacoma and Seattle in 2016 in advance of completion of the Sounder Yard & Shops project.



Sounder Yard Expansion will increase storage capacity for Sounder 7th train set

Schedule

	Start	Finish
Prelim. Engineering	Jul 2013	Jun 2014
Final Design	Jun 2014	Dec 2015
Construction	Jan 2016	Apr 2017

Scope/Schedule/Budget Variance

None to report this period.

Major Contracts (\$s in thousands)

Vendor	Amount	Scope
Parsons Brinkerhoff	\$1,694	PE
HNTB	\$447	CM Services

Project Cost (\$s in thousands)

Phase	Lifetime Budget	Commitment to Date	Incurred to Date
Administration	\$ 1,200	\$ 435	\$ 437
Preliminary Engineering	\$ 2,150	\$ 1,779	\$ 1,209
Final Design	\$ -	\$ -	\$ -
Third Party Agreements	\$ -	\$ -	\$ -
ROW Acquisition and Permits	\$ 400	\$ 239	\$ 165
Construction	\$ 15,400	\$ 298	\$ -
Construction Services	\$ 1,400	\$ 447	\$ 56
Project Total	\$ 20,550	\$ 3,198	\$ 1,867

Key Project Activities

Current Period

- Conducted Concept/Alternative Technical Concept meeting with shortlisted firms.
- Completed relocation work required for TPU and PSE electrical poles.

Next Period

- Receive project proposal from shortlisted firms.
- Evaluate proposals and select firm.
- Issue "Intent to Award" contract.

Closely Monitored Issues

- Right-of-Way acquisition.
- Utility relocations.

Sounder Commuter Rail Positive Train Control



Scope

Positive Train Control (PTC) systems are integrated command, control, communications, and information systems for controlling train movements. The systems improve railroad safety by significantly reducing the probability of collisions between trains, casualties to railway workers, and over-speed accidents.

Congress acted to extend the deadline for implementing PTC to December 2018.



Improving safety along the Tacoma-to-Lakewood corridor

Schedule

Schedule	Start	Finish
Prelim. Engineering	N/A	N/A
Final Design	Jul 2013	May 2014
Construction	Jun 2014	Dec 2015

Scope/Schedule/Budget Variance

None to report this period.

Project Cost (\$s in thousands)

Phase	Lifetime Budget	Commitment to Date	Incurred to Date
Administration	\$ 2,238	\$ 1,124	\$ 1,139
Preliminary Engineering	\$ -	\$ -	\$ -
Final Design	\$ 279	\$ 226	\$ 226
Third Party Agreements	\$ 4,267	\$ 3,900	\$ 2,510
ROW Acquisition and Permits	\$ -	\$ -	\$ -
Construction	\$ 40,484	\$ 35,052	\$ 23,367
Construction Services	\$ 4,062	\$ 2,287	\$ 674
Contingency	\$ 1,725	\$ -	\$ -
Project Total	\$ 53,055	\$ 42,589	\$ 27,916

Major Contracts (\$s in thousands)

Vendor	Amount	Scope
Xorail, Inc.	\$34,202	Design/System install
LTK Eng. Svcs.	\$2,287	CM/Eng. Services

Key Project Activities

Current Period

- Received draft of Safety Plan.
- Signed agreements with 2 Class 1 railroads for use of materials for Safety Plan.
- Submitted all but one test plan to FRA.
- Completed brake testing.

Next Period

- Complete testing of PTC systems.
- Enter PTC revenue service demonstration.
- Submit to FRA PTC Safety Plan.
- Complete PTC installation punchlist.

Closely Monitored Issues

- Availability of potential Grant funding.
- Coordination of Sound Transit work efforts with BNSF schedule for PTC implementation.
- Completion of project by federal compliance deadline of Dec. 2015.

Scope

The Mukilteo Station South Platform project includes construction of a second platform, shelter structures, stairs, elevator towers, and a pedestrian bridge connecting the south platform with the existing north platform.



Artist's rendering of Mukilteo Station

Schedule

	Start	Finish
Prelim. Engineering	Feb 2001	Apr 2005
Final Design	Aug 2007	Sep 2012
Construction	Jan 2014	Apr 2015

Scope/Schedule/Budget Variance

Construction has been delayed due to delay in manufacturing of barrier cable rails as well as availability of BNSF Flagger.

Major Contracts (\$s in thousands)

Vendor	Amount	Scope
AECOM	\$2,154	FD
CA Carey Corp.	\$7,357	CON
KBA	\$1,600	CM Services

Project Cost (\$s in thousands)

Phase	Lifetime Budget	Commitment to Date	Incurred to Date
Administration	\$ 1,128	\$ 1,184	\$ 1,190
Preliminary Engineering	\$ -	\$ -	\$ -
Final Design	\$ 2,447	\$ 2,240	\$ 2,240
Third Party Agreements	\$ 131	\$ -	\$ -
ROW Acquisition and Permits	\$ 3,465	\$ 436	\$ 428
Construction	\$ 9,560	\$ 8,498	\$ 8,608
Construction Services	\$ 1,582	\$ 1,600	\$ 1,593
Project Total	\$ 18,313	\$ 13,958	\$ 14,059

Key Project Activities

Current Period

- Installed barrier rail and cable rail.
- Touchup paint.
- Installed downspouts.
- Continued commissioning activities.

Next Period

- Completion of commissioning activities.
- Substantial completion.
- Addressing punchlist items.

Closely Monitored Issues

- BNSF Flagger (Form B) requirements.

Sounder Commuter Rail Tukwila Station



Scope

The Tukwila Station includes permanent boarding platforms with canopies, improved pedestrian access, and commuter parking improvements, a bus transfer facility, and secure bicycle parking. The platform will be constructed south of Longacres Way and west of the BNSF railroad tracks.



Tukwila Station

Schedule

Schedule	Start	Finish
Prelim. Engineering	Jul 2007	Aug 2009
Final Design	Jan 2012	Sep 2012
Construction	Feb 2013	Jan 2015

Project Cost (\$s in thousands)

Phase	Lifetime Budget	Commitment to Date	Incurred to Date
Administration	\$ 2,773	\$ 1,681	\$ 1,683
Preliminary Engineering	\$ 1,101	\$ 1,101	\$ 1,101
Final Design	\$ 4,724	\$ 4,617	\$ 4,579
Third Party Agreements	\$ -	\$ -	\$ -
ROW Acquisition and Permits	\$ 11,009	\$ 10,371	\$ 10,361
Construction	\$ 24,281	\$ 18,533	\$ 17,512
Construction Services	\$ 2,081	\$ 1,614	\$ 1,605
Project Total	\$ 45,969	\$ 37,917	\$ 36,841

Scope/Schedule/Budget Variance

None to report this period.

Major Contracts (\$s in thousands)

Vendor	Amount	Scope
KPFF	\$5,434	PE/ED/FD
Absher	\$16,880	CON
Lin & Associates	\$1,515	CM Services

Key Project Activities

Current Period

- Issued contract acceptance.
- Completed commissioning and training.

Next Period

- Transition project to Operations.

Closely Monitored Issues

- None identified at this time.

Scope

Replacement of the single tracked Tacoma Trestle with a structure capable of accommodating double tracking to improve passenger and commuter rail service reliability and reduce delays for freight movement through Tacoma.



Project will replace existing Tacoma train trestle

Schedule

	Start	Finish
Prelim. Engineering	Aug 2013	Oct 2014
Final Design	Mar 2014	Sep 2015
Construction	Jan 2016	May 2018

Scope/Schedule/Budget Variance

None to report this period.

Major Contracts (\$s in thousands)

Vendor	Amount	Scope
David Evans & Associates	\$12,246	PE/ED/FD
HNTB	\$631	CM Services

Project Cost (\$s in thousands)

Phase	Lifetime Budget	Commitment to Date	Incurred to Date
Administration	\$ 4,086	\$ 1,624	\$ 1,645
Preliminary Engineering	\$ 4,497	\$ 4,410	\$ 3,950
Final Design	\$ 13,481	\$ 8,728	\$ 6,324
Third Party Agreements	\$ 1,077	\$ -	\$ -
ROW Acquisition and Permits	\$ 10,061	\$ 5,522	\$ 5,302
Construction	\$ 81,641	\$ 927	\$ -
Construction Services	\$ 5,666	\$ 631	\$ 133
Project Total	\$ 120,509	\$ 21,842	\$ 17,354

Key Project Activities

Current Period

- Transmitted 100% design for ST's review and comments.
- Coordination with FTA, DAHP, and Puyallup Tribe on Section 106 MOA mitigation.
- Continued coordination between ST and WSDOT on project interface.

Next Period

- Execution of ST and City of Tacoma work order agreement.
- Acquiring City of Tacoma street occupancy permit.
- Execute amendment to ST and WSDOT final design costs reimbursement agreement for additional platform extension costs.
- Advertise the IFB and conduct bid solicitation.

Closely Monitored Issues

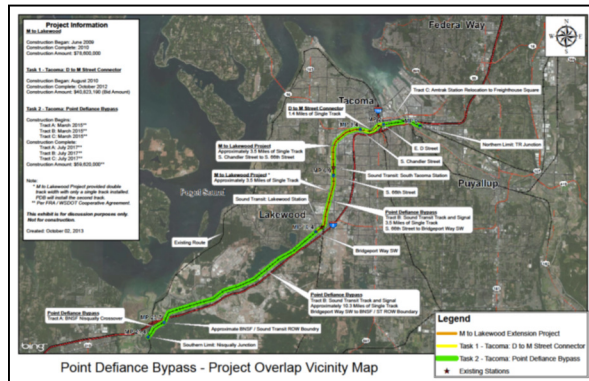
- Coordination with WSDOT on the design integration of the platform extension to the Trestle design package and signal design integration of the ST Tacoma Trestle Project and WSDOT Point Defiance By-Pass Project.
- Coordination with the Federal Railroad Administration on evaluating the options of relocating crossover off of the double-track bridge.
- Real Estate to secure possession and use of three private parcels in Tacoma by November 2015.

Sounder Commuter Rail Point Defiance Bypass



Scope

Track & Signal along the Lakeview subdivision is being improved between 66th Street in Tacoma and Nisqually Junction. Improvements include upgrades to track and signal systems, grade crossings, bridge replacement and rehabilitation.



Point Defiance Bypass Route

Schedule

Schedule	Start	Finish
Prelim. Engineering	N/A	N/A
Final Design	N/A	N/A
Construction	Aug 2015	Mar 2017

Project Cost (\$s in thousands)

Phase	Lifetime Budget	Commitment to Date	Incurred to Date
Administration	\$ 2,700	\$ 809	\$ 783
Preliminary Engineering	\$ -	\$ -	\$ -
Final Design	\$ 200	\$ 126	\$ 101
Third Party Agreements	\$ -	\$ -	\$ -
ROW Acquisition and Permits	\$ 1,000	\$ 53	\$ 50
Construction	\$ 114,500	\$ 55,106	\$ -
Construction Services	\$ 9,600	\$ 934	\$ 127
Project Total	\$ 128,000	\$ 57,028	\$ 1,061

Scope/Schedule/Budget Variance

None to report this period.

Major Contracts (\$s in thousands)

Vendor	Amount	Scope
Stacy and Witbeck, Inc.	\$53,800	CON
HNTB	\$923	CM Services

Key Project Activities

Current Period

- Awarded contract and issued NTP to Stacy Witbeck for construction.
- Continued coordination with project stakeholders, affected jurisdictions and fiber optic utility owners.
- Began early coordination with WSDOT & WUTC Operation Life Saver.

Next Period

- Mobilize contractor.
- Review contractor submittals.
- Install construction entrances at cross streets and sediment fence to protect wetland areas.
- Coordination with third party fiber optic installation.
- Develop plans for haul routes for import of subballast.

Closely Monitored Issues

- Project designed by the Washington State Department of Transportation is funded through an ARRA grant made available by the FRA. Work for this project must be completed by March 2017 in order to leverage all available funding.
- Third-party fiber optic relocation work is on-going and requires coordination between contractors.

Scope

This project is currently undertaking a NEPA/SEPA environmental review and preliminary engineering for access improvements identified for the Puyallup Station. ST Board identified improvements include a new parking garage at the Puyallup Station, additional parking facilities, station area pedestrian access improvements, bicycle lane or path improvements near the station, secure bicycle storage area traffic improvements.

The project scope for Final Design will be determined with the concurrence of community and municipal stakeholders, following completion of conceptual and preliminary engineering.



Improving access to Puyallup Station

Schedule

	Start	Finish
Prelim. Engineering	Jun 2013	2016
Final Design	2016	2017
Construction	2018	2020

Scope/Schedule/Budget Variance

None to report this period.

Major Contracts

(\$s in thousands)

Vendor	Amount	Scope
Parametrix	\$4,512	CE/PE

Project Cost (\$s in thousands)

Phase	Lifetime Budget	Commitment to Date	Incurred to Date
Administration	\$ 757	\$ 292	\$ 297
Preliminary Engineering	\$ 2,680	\$ 2,320	\$ 1,167
Final Design	\$ -	\$ -	\$ -
Third Party Agreements	\$ -	\$ -	\$ -
ROW Acquisition and Permits	\$ 110	\$ 32	\$ 29
Construction	\$ -	\$ -	\$ -
Construction Services	\$ -	\$ -	\$ -
Project Total	\$ 3,547	\$ 2,644	\$ 1,493

Key Project Activities

Current Period

- Continued review of documentation and studies.

Next Period

- Issue Environmental determination.

Closely Monitored Issues

- None identified at this time.

Sounder Commuter Rail Sumner Station Improvements



Scope

This project is currently undertaking a NEPA/SEPA environmental review and preliminary engineering for access improvements identified for the Sumner Station. ST Board identified improvements include a new parking garage at the Sumner Station, station area pedestrian access improvements, secure bicycle storage at the station and station area traffic improvements.

The project scope for Final Design will be determined with the concurrence of community and municipal stakeholders, following completion of conceptual and preliminary engineering.



Improving access to Sumner Station

Schedule

	Start	Finish
Prelim. Engineering	Apr 2013	2016
Final Design	2016	2017
Construction	2018	2020

Scope/Schedule/Budget Variance

None to report this period.

Major Contracts (\$s in thousands)

Vendor	Amount	Scope
Parametrix	\$4,512	CE/PE

Project Cost (\$s in thousands)

Phase	Lifetime Budget	Commitment to Date	Incurred to Date
Administration	\$ 762	\$ 300	\$ 305
Preliminary Engineering	\$ 2,685	\$ 2,324	\$ 1,172
Final Design	\$ -	\$ -	\$ -
Third Party Agreements	\$ -	\$ -	\$ -
ROW Acquisition and Permits	\$ 2,912	\$ 2,720	\$ 2,694
Construction	\$ 113	\$ 97	\$ 97
Construction Services	\$ -	\$ -	\$ -
Project Total	\$ 6,472	\$ 5,441	\$ 4,268

Key Project Activities

Current Period

- Continued review of documentation and studies.

Next Period

- Issue Environmental determination.

Closely Monitored Issues

- Sound Transit is planning on making a financial contribution to the SR 410 and Traffic Avenue interchange project (SR 410 Interchange Project) tied to pedestrian, bicycle, and transit access to the station, if other funding can be identified, consistent with the ST2 cost estimate.

This page intentionally left blank.