

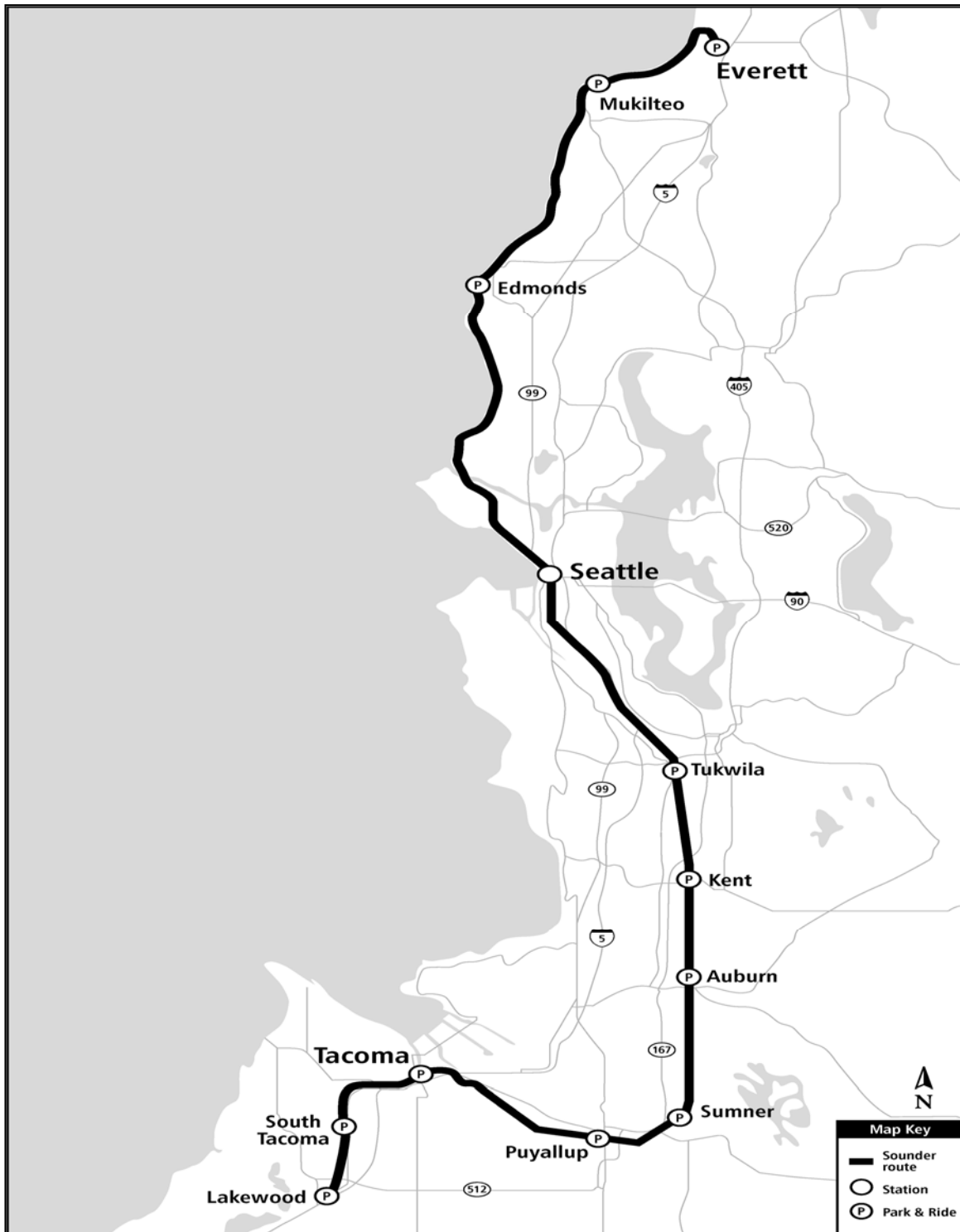
Progress Report Sounder Program



Utility relocation work began on Tacoma Trestle Track & Signal project.

December | 2015





Sounder provides commuter rail service between Everett and Lakewood

Projects

Sounder South Expanded Service: Sound Transit has purchased four additional round trip easements from BNSF to expand service between Seattle and Tacoma/Lakewood. Sound Transit is responsible for completing all the environmental documentation, permitting, and mitigation associated with BNSF construction activity necessary to support those additional round trips. One of the four additional round trips has commenced, timing of the other three is dependent on completing environmental work and ridership demand.

Sounder Yard & Shops Facility: Sound Transit is evaluating the need for an operations and maintenance base. Project development activities include confirmation of fleet operations, facility and site programming, and evaluation of project delivery method.

Sounder Yard Expansion: Additional train service in the Everett-to-Lakewood corridor will require additional train sets and a location to store the trains overnight. The Century yard is being expanded by an additional track to accommodate the new train sets and permanent crew reporting facilities will be incorporated into the design, eliminating the need to lease space.

Positive Train Control: Federal regulations require all passenger train systems be equipped with PTC systems. This necessitates upgrades to Sounder wayside signals, communications, and information management systems along with additional on-board equipment. BNSF is installing wayside elements within the Everett-to-Tacoma corridor. This project includes wayside elements along the Tacoma-to-Lakewood corridor and modifications of locomotives and cab cars for installation of on-board equipment. Congress acted to extend the deadline for implementing PTC to December 2018. Sound Transit will implement PTC operations as early as FRA approvals of its Revenue Service Demonstration and PTC Safety Plans will allow.

Mukilteo Station, South Platform: Full build-out of this station includes construction of a second platform, overhead pedestrian bridge, elevators, stair tower, and passenger shelters.

Tukwila Station: Construction has been completed of a permanent station and platforms to replace the temporary wooden structure. This project included the construction of an expanded parking lot, bus loop with passenger shelters, bicycle storage area, and new concrete platforms with improved passenger shelters, all sited to accommodate future rail line expansion by BSNF.

Tacoma Trestle Track & Signal: Replacement of existing wooden trestle that is reaching the end of the functional service life with a double track concrete structure. This project will improve overall safety, capacity, and speed in this section of the Sounder corridor.

Point Defiance Bypass: Sound Transit is administering the construction of the Point Defiance Bypass project, which began construction in September and is funded by WSDOT, that will construct a new second track adjacent to Sound Transit's existing main line between South Tacoma (66th Street Bridge) and Lakewood (Bridgeport Way) and install new rails, ties, and ballast on Sound Transit's existing track between Lakewood and Nisqually with associated signal and PTC safety systems.

Puyallup Station Improvements: Preliminary engineering for access improvements at Puyallup Station. This project was identified for access improvements by the Station Access and Demand Project completed in 2013. Final scope of improvements will be determined at the completion of preliminary engineering.

Sumner Station Improvements: Preliminary engineering for access improvements at Sumner Station. This project was identified for access improvement by the Station Access and Demand Project completed in 2013. Final scope of improvements will be determined at the completion of preliminary engineering.

Program Cost Summary

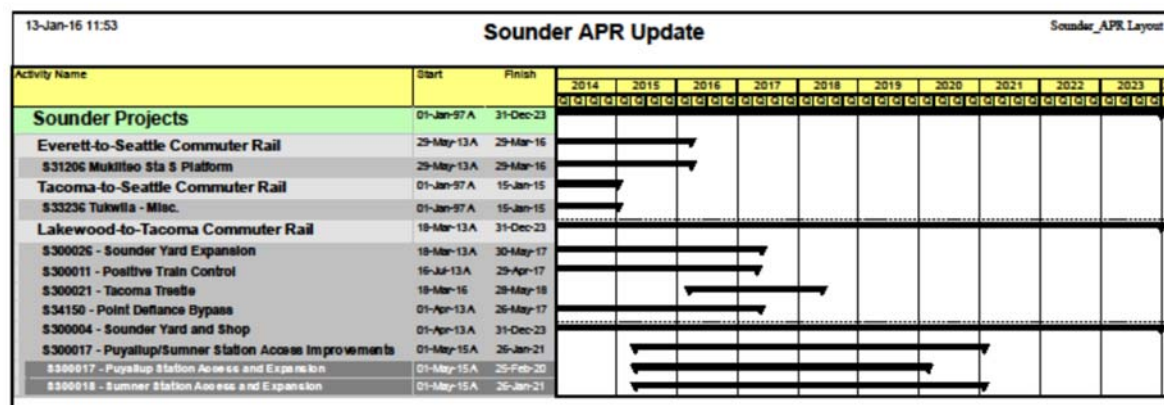
The Program Cost Summary information by project is summarized below. The Adopted Budget reflects the Lifetime Budget for each project through the approved project phase, meaning that for projects approved for Final Design activities only, the Lifetime Budget will be amended at some point to add budget for construction activities. Further information can be found in the following project pages.

SOUNDER	Adopted Lifetime Budget	Commitment to Date	Incurred to Date	Forecast to Complete	Estimated Final Cost	Adopted Budget vs EFC
SOUNDER YARD & SHOPS FACILITY	\$ 6.3	\$ 2.5	\$ 2.0	\$ 3.7	\$ 6.3	\$ -
POSITIVE TRAIN CONTROL	\$ 53.1	\$ 42.8	\$ 34.7	\$ 10.3	\$ 53.1	\$ -
PUYALLUP STATION IMPROVEMENTS	\$ 3.5	\$ 2.7	\$ 1.7	\$ 0.8	\$ 3.5	\$ -
SUMNER STATION IMPROVEMENTS	\$ 6.5	\$ 5.5	\$ 4.5	\$ 1.0	\$ 6.5	\$ -
TACOMA TRESTLE TRACK & SIGNAL	\$ 120.5	\$ 23.3	\$ 19.8	\$ 97.2	\$ 120.5	\$ -
SOUNDER YARD EXPANSION	\$ 20.6	\$ 3.2	\$ 2.0	\$ 17.3	\$ 20.6	\$ -
PT DEFIANCE BYPASS	\$ 128.0	\$ 57.4	\$ 14.2	\$ 70.6	\$ 128.0	\$ -
MUKILTEO STATION-S PLATFORM	\$ 18.3	\$ 14.2	\$ 14.4	\$ 4.1	\$ 18.3	\$ -
TUKWILA STATION	\$ 46.0	\$ 38.0	\$ 36.9	\$ 2.7	\$ 40.7	\$ 5.3
SOUNDER SOUTH EXPANDED SERVICE	\$ 202.0	\$ 194.2	\$ 194.1	\$ 7.8	\$ 202.0	\$ -
Total SOUNDER	\$ 604.7	\$ 383.8	\$ 324.2	\$ 215.6	\$ 599.4	\$ 5.3

Table figures in millions.

Program Schedule

Schedule for active projects are summarized below. Further information can be found in the following project pages.



Third-Party Agreements

WSDOT / Amtrak / FRA

- Negotiations have concluded for a Service Outcomes Agreement (SOA) and Stakeholder Agreement for investment of High-Speed Passenger Rail grant money into the Sound Transit rail corridor. The SOA captures Sound Transit's commitment to continued maintenance and operation of the corridor, and the Stakeholder Agreement provides funding to be applied to the completed construction on the D Street-to-M Street project and the on-going Point Defiance Bypass project.

City of Tacoma

- Sound Transit has completed the transfer to the City of Tacoma of surplus properties acquired for the D Street-to-M Street project not needed for Sounder operations. The transfer occurred as part of the purchase and sale agreement for the Reservation Connector rail right-of-way.
- Work Order Agreement - City of Tacoma to conduct design review services and construction inspection services for the Tacoma Trestle & Signal project. City has planned, reviewed, and commented on ST's 60%, 90%, and 100% IFB design submittals. City reviewed only sections that impact City of Tacoma's public right-of-way; including sanitary sewer relocation.

FTA / WA. Dept. of Archeology and Historical Preservation

- Environmental MOA - Federal Transit Administration (FTA), the responsible Federal agency, is providing federal financial assistance for the Tacoma Trestle Track & Signal project. The grant administrator has determined that the project is an undertaking as defined in Title 36 Code of Federal Regulation (CFR) §800.16(y), and thus is subject to review under the Section 106 of the National Historic Preservation Act (NHPA), 16 U.S.C §470 (Section 106) and its implementing regulations, 36 CFR Part 800.

WSDOT

- Construction and Maintenance - Funding of projects on Sound Transit-owned property, including a \$21M contribution to the D-to-M Street Track and Signal project, and 100% funding of the Pt. Defiance Bypass project. For Tacoma Trestle, WSDOT will provide funding for Sound Transit to construct and maintain the platform extension serving Amtrak long-distance trains.
- CE and PE Cost Reimbursement - WSDOT wishes to extend the passenger platform at the Freighthouse Station onto the bridge in order to accommodate the length of Amtrak trains that will use the station.
- Final Design Cost Reimbursement - WSDOT is to reimburse Sound Transit for the associated design consultant services and other expenditures to complete final design of the extended platform, necessary to accommodate the longer Amtrak trains at their Freighthouse Square Station.

Sprint

- Cost Reimbursement - Sound Transit and Sprint have reached an agreement for Sprint to temporarily relocate their facilities, then permanently relocate their facilities back onto ST's new bridge. The agreement will cover expenditures for design and construction activities related to the temporary relocation. A subsequent agreement will be developed for the design work and construction for the permanent relocation of their facilities.

Construction Safety

Agency-led active construction contracts under the Sounder program are as follows:

- Mukilteo Station, South Platform
- Point Defiance By-Pass

No accidents or incidents were reported during this period.

Quality Assurance

Quality Assurance continues to support the Sounder program through review of design and construction documents and periodic audits of projects in design, construction, and operation.

Description	4 th Quarter 2015	Notes
Audits/Surveillances Performed	0 Audits 0 Surveillances	None
Audits/Surveillances Reports Issued	0 Audit 0 Surveillances	None
Reports in Progress	1 Reports	A-D-SND-TacomaTrestle-15-02 100% Design Submittal

Sound Transit Board Actions

Board motions and resolutions directly related to Sounder Program approved this period are summarized in the table.

Motion Number	Description	Date
M2015-124	Increase Contingency for Construction Management Consultant Services for the Mukilteo Station South Platform Project.	12/10/15

This page intentionally left blank.

Scope

Purchase of four additional commuter rail easements from BNSF for expanding service between Seattle and Lakewood. A number of track and signal improvements are needed between Seattle and Tacoma to accommodate additional service.

BNSF is currently completing design improvements and intends to incrementally complete construction as additional service is added. Additional round trips are planned for 2016 and 2017.



Additional morning and evening service between Seattle and Lakewood

Schedule

	Start	Finish
Prelim. Engineering	Oct 2010	Mar 2012
Final Design	Aug 2011	Jan 2016
Construction	Sep 2015	Apr 2018

Scope/Schedule/Budget Variance

BNSF Easement 3 started construction summer 2015 between Tukwila and Kent. BNSF Easement is located between Kent and Auburn..

Major Contracts (\$s in thousands)

Vendor	Amount	Scope
ESA Adolfson	\$416	PE

Project Cost (\$s in thousands)

Phase	Lifetime Budget	Commitment to Date	Incurred to Date
Administration	\$ 5,650	\$ 1,076	\$ 1,077
Preliminary Engineering	\$ 1,007	\$ 532	\$ 482
Final Design	\$ 400	\$ -	\$ -
Third Party Agreements	\$ -	\$ -	\$ -
ROW Acquisition and Permits	\$ 186,485	\$ 185,182	\$ 185,182
Construction	\$ 8,426	\$ 7,405	\$ 7,405
Construction Services	\$ -	\$ -	\$ -
Project Total	\$ 201,968	\$ 194,195	\$ 194,146

Key Project Activities

Current Period

- Received concurrence from the US Army Corps on the fish passage culvert mitigation plan.
- Started coordination with King County on design and construction of the mitigation.
- Construction of the Easement 3 corridor between Tukwila and Kent.

Next Period

- Continue to work with King County on an agreement to design and construct the required fish passage mitigation project.
- BNSF expected to advertise the Easement 4 Project.

Closely Monitored Issues

- Implementation of the fish passage culvert mitigation project. Mitigation project must be constructed by April 2018.

Sounder Commuter Rail Sounder Yard & Shops Facility



Scope

Final planning and analysis, environmental clearance and preliminary engineering for yard and shop operations and maintenance facilities to support expanded Sounder service.

Preliminary project development activities (final planning, revised cost estimating and preliminary siting studies) have been completed; environmental analysis continues.



Amtrak currently provides Sounder vehicle maintenance

Schedule

	Start	Finish
Prelim. Engineering	Aug 2016	TBD
Final Design	TBD	TBD
Construction	TBD	TBD

Scope/Schedule/Budget Variance

None to report this period.

Project Cost (\$s in thousands)

Phase	Lifetime Budget	Commitment to Date	Incurred to Date
Administration	\$ 860	\$ 358	\$ 368
Preliminary Engineering	\$ 5,116	\$ 2,153	\$ 1,591
Final Design	\$ -	\$ -	\$ -
Third Party Agreements	\$ -	\$ -	\$ -
ROW Acquisition and Permits	\$ 305	\$ 37	\$ 37
Construction	\$ -	\$ -	\$ -
Construction Services	\$ -	\$ -	\$ -
Project Total	\$ 6,281	\$ 2,548	\$ 1,996

Major Contracts (\$s in thousands)

Vendor	Amount	Scope
Parsons Brinckerhoff	\$2,300	PE/ED

Key Project Activities

Current Period

- Designers transmitted the draft noise and vibration technical and draft transportation technical memo for ST's review and comments.
- Received NEPA approval by FTA for early acquisition for a key private parcel.
- Met with City of Lakewood and Pierce Transit to provide update on environmental assessment review.

Next Period

- Seek ST Board of Director approval for early acquisition of a key private parcel.
- Complete NEPA and SEPA environmental assessment process.

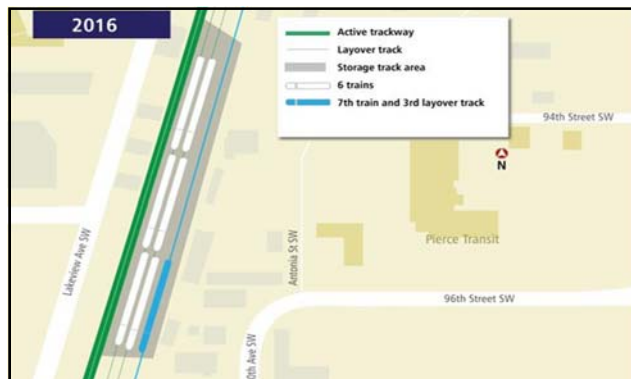
Closely Monitored Issues

- None identified at this time.

Scope

The Sounder Yard Expansion project includes design and construction of a third storage track and civil improvements to accommodate seven Sounder train sets at the Lakewood layover facility, Century Yard.

This additional storage capacity is necessary when additional Sounder South trains, approved in ST2, begin service between Tacoma and Seattle in 2016 in advance of completion of the Sounder Yard & Shops project.



Sounder Yard Expansion will increase storage capacity for Sounder 7th train set

Schedule

	Start	Finish
Prelim. Engineering	Jul 2013	Sep 2014
Final Design	Jun 2014	Sep 2015
Construction	May 2015	Dec 2016

Scope/Schedule/Budget Variance

The baseline schedule milestones will be revised. The design-build contract is anticipated to award in February 2016 with project completion in April 2017.

Project Cost (\$s in thousands)

Phase	Lifetime Budget	Commitment to Date	Incurred to Date
Administration	\$ 1,200	\$ 484	\$ 486
Preliminary Engineering	\$ 2,150	\$ 1,779	\$ 1,215
Final Design	\$ -	\$ -	\$ -
Third Party Agreements	\$ -	\$ -	\$ -
ROW Acquisition and Permits	\$ 400	\$ 242	\$ 184
Construction	\$ 15,400	\$ 298	\$ 75
Construction Services	\$ 1,400	\$ 447	\$ 44
Project Total	\$ 20,550	\$ 3,250	\$ 2,004

Major Contracts (\$s in thousands)

Vendor	Amount	Scope
Parsons Brinkerhoff	\$1,694	PE/DB
HNTB	\$447	CMC

Key Project Activities

Current Period

- Began contract negotiations with identified highest ranked proposer for project.
- Issued Notice of Intent to Award.

Next Period

- ST Board approval of design-build contract with Shim-mick Construction expected for January 2016, which will allow for a project NTP in February 2016.

Closely Monitored Issues

- Right-of-Way acquisition.
- Utility relocations.

Sounder Commuter Rail Positive Train Control



Scope

Positive Train Control (PTC) systems are integrated command, control, communications, and information systems for controlling train movements. The systems improve railroad safety by significantly reducing the probability of collisions between trains, casualties to railway workers, and over-speed accidents.

Congress acted to extend the deadline for implementing PTC to December 2018.



Improving safety along the Tacoma-to-Lakewood corridor

Schedule

	Start	Finish
Prelim. Engineering	N/A	N/A
Final Design	Jul 2013	May 2014
Construction	Jun 2014	Sep 2016

Scope/Schedule/Budget Variance

Third-party delays have now pushed the anticipated project completion date out to September 2016.

Project Cost (\$s in thousands)

Phase	Lifetime Budget	Commitment to Date	Incurred to Date
Administration	\$ 2,238	\$ 1,209	\$ 1,212
Preliminary Engineering	\$ -	\$ -	\$ -
Final Design	\$ 279	\$ 226	\$ 226
Third Party Agreements	\$ 4,267	\$ 3,900	\$ 2,510
ROW Acquisition and Permits	\$ -	\$ -	\$ -
Construction	\$ 40,484	\$ 35,146	\$ 26,478
Construction Services	\$ 4,062	\$ 2,287	\$ 692
Contingency	\$ 1,725	\$ -	\$ -
Project Total	\$ 53,055	\$ 42,768	\$ 31,118

Major Contracts (\$s in thousands)

Vendor	Amount	Scope
Xorail, Inc.	\$34,200	Design/System install
LTK Eng. Svcs.	\$2,287	CM/Eng. Services

Key Project Activities

Current Period

- Ongoing work to complete testing of PTC systems; enter PTC revenue service demonstration and submit PTC Safety Plan to FRA.
- Working through installation punch list items.
- Agreed in principle agreement with BNSF to support PTC System.

Next Period

- Complete PTC testing with BNSF.
- Enter PTC revenue service demonstration testing.
- Complete PTC punch list.
- Formalize agreement with BNSF. (SLA for PTC support)

Closely Monitored Issues

- None identified at this time.

Scope

The Mukilteo Station South Platform project includes construction of a second platform, shelter structures, stairs, elevator towers, and a pedestrian bridge connecting the south platform with the existing north platform.



Artist's rendering of Mukilteo Station

Schedule

	Start	Finish
Prelim. Engineering	Feb 2001	Apr 2005
Final Design	Aug 2007	Sep 2012
Construction	Jan 2014	Feb 2016

Scope/Schedule/Budget Variance

Construction finish date has been extend to account for addressing additional items required by L&I in order to open the elevators for operations.

Project Cost (\$s in thousands)

Phase	Lifetime Budget	Commitment to Date	Incurred to Date
Administration	\$ 1,128	\$ 1,236	\$ 1,252
Preliminary Engineering	\$ -	\$ -	\$ -
Final Design	\$ 2,447	\$ 2,240	\$ 2,240
Third Party Agreements	\$ 131	\$ 0	\$ -
ROW Acquisition and Permits	\$ 3,465	\$ 485	\$ 478
Construction	\$ 9,560	\$ 8,559	\$ 8,751
Construction Services	\$ 1,582	\$ 1,650	\$ 1,674
Project Total	\$ 18,313	\$ 14,170	\$ 14,395

Major Contracts (\$s in thousands)

Vendor	Amount	Scope
AECOM	\$2,154	FD
CA Carey Corp.	\$7,548	CON
KBA	\$1,650	CM Services

Key Project Activities

Current Period

- Completed initial corrective re-work from L&I inspections.

Next Period

- Complete final L&I corrective re-work.
- Completion of commissioning activities.
- Substantial completion.
- Addressing punchlist items.

Closely Monitored Issues

- BNSF Flagging (Form B) requirements.
- Additional re-work from L&I inspections.

Sounder Commuter Rail Tukwila Station



Scope

The Tukwila Station includes permanent boarding platforms with canopies, improved pedestrian access, and commuter parking improvements, a bus transfer facility, and secure bicycle parking. The platform will be constructed south of Longacres Way and west of the BNSF railroad tracks.



Tukwila Station

Schedule

	Start	Finish
Prelim. Engineering	Jul 2007	Aug 2009
Final Design	Jan 2012	Sep 2012
Construction	Feb 2013	Jan 2015

Scope/Schedule/Budget Variance

None to report this period.

Major Contracts (\$s in thousands)

Vendor	Amount	Scope
KPFF	\$5,434	PE/ED/FD
Absher	\$16,896	CON
Lin & Associates	\$1,515	CM Services

Project Cost (\$s in thousands)

Phase	Lifetime Budget	Commitment to Date	Incurred to Date
Administration	\$ 2,773	\$ 1,709	\$ 1,710
Preliminary Engineering	\$ 1,101	\$ 1,101	\$ 1,101
Final Design	\$ 4,724	\$ 4,617	\$ 4,588
Third Party Agreements	\$ -	\$ -	\$ -
ROW Acquisition and Permits	\$ 11,009	\$ 10,383	\$ 10,362
Construction	\$ 24,281	\$ 18,557	\$ 17,478
Construction Services	\$ 2,081	\$ 1,614	\$ 1,606
Project Total	\$ 45,969	\$ 37,981	\$ 36,845

Key Project Activities

Current Period

- Addressing follow-on items from Operations.

Next Period

- Continue addressing follow-on items from Operations.

Closely Monitored Issues

- Coordination on platform activities between BNSF, ST, and Amtrak.

Scope

Replacement of the single-tracked Tacoma Trestle with a structure capable of accommodating double tracking to improve passenger and commuter rail service reliability and reduce delays for freight movement through Tacoma.



Project will replace existing Tacoma train trestle

Schedule

	Start	Finish
Prelim. Engineering	Aug 2013	Oct 2014
Final Design	Nov 2014	Nov 2015
Construction	Mar 2016	May 2018

Scope/Schedule/Budget Variance

None reported during this period.

Major Contracts (\$\$ in thousands)

Vendor	Amount	Scope
David Evans & Associates	\$12,343	PE/ED/FD
HNTB	\$631	CMC

Project Cost (\$\$ in thousands)

Phase	Lifetime Budget	Commitment to Date	Incurred to Date
Administration	\$ 4,086	\$ 1,855	\$ 1,898
Preliminary Engineering	\$ 4,497	\$ 4,275	\$ 4,005
Final Design	\$ 13,481	\$ 8,786	\$ 7,842
Third Party Agreements	\$ 1,077	\$ 682	\$ 22
ROW Acquisition and Permits	\$ 10,061	\$ 6,044	\$ 5,874
Construction	\$ 81,641	\$ 997	\$ 44
Construction Services	\$ 5,666	\$ 631	\$ 113
Project Total	\$ 120,509	\$ 23,270	\$ 19,798

Key Project Activities

Current Period

- Advertised the IFB package and scheduled bid procurement.
- Secured all temporary construction easements and possession and use of all private properties.
- Work has begun on utilities relocations.
- Signed and executed Section 106 MOA amendment
- Received NPDES permit from Dept. of Ecology.
- Reviewed WSDOT Rail's design package for platform extension incorporated into the Tacoma Trestle project.

Next Period

- Archaeological borings on the railroad ROW.
- Scheduled bid opening.
- Seek Board of Directors approval to award construction contract at February meeting.
- Issue notice to proceed to the awarded construction contractor.

Closely Monitored Issues

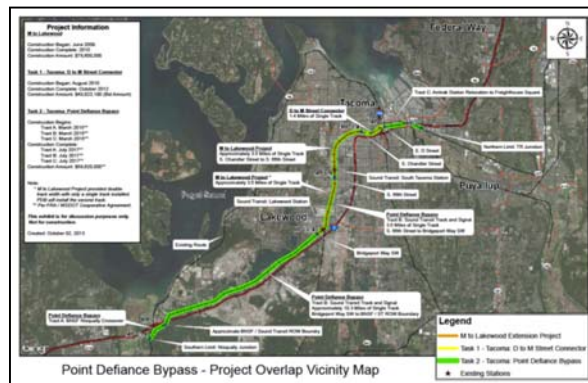
- Coordination with WSDOT on the design integration of the platform extension to the Trestle design package and signal design integration of the ST Tacoma Trestle Project and WSDOT Point Defiance By-Pass Project.
- Coordination with the Federal Railroad Administration on evaluating the options of relocating crossover off the double-track bridge.

Sounder Commuter Rail Point Defiance Bypass



Scope

Track & Signal along the Lakeview subdivision is being improved between 66th Street in Tacoma and Nisqually Junction. Improvements include upgrades to track and signal systems, grade crossings, bridge replacement and rehabilitation. This project is part of WSDOT Rail suite of improvements in the Northwest High Speed Rail Corridor, funded by FRA, with construction contract executed and administered by Sound Transit.



Point Defiance Bypass Route

Schedule

	Start	Finish
Prelim. Engineering	N/A	N/A
Final Design	N/A	N/A
Construction	Aug 2015	Mar 2017

Scope/Schedule/Budget Variance

None to report this period.

Major Contracts (\$s in thousands)

Vendor	Amount	Scope
Stacy and Witbeck, Inc.	\$53,800	CON
HNTB	\$923	CMC

Project Cost (\$s in thousands)

Phase	Lifetime Budget	Commitment to Date	Incurred to Date
Administration	\$ 2,700	\$ 984	\$ 1,038
Preliminary Engineering	\$ -	\$ -	\$ -
Final Design	\$ 200	\$ 122	\$ 103
Third Party Agreements	\$ -	\$ -	\$ -
ROW Acquisition and Permits	\$ 1,000	\$ 53	\$ 49
Construction	\$ 114,500	\$ 55,277	\$ 12,020
Construction Services	\$ 9,600	\$ 930	\$ 947
Project Total	\$ 128,000	\$ 57,366	\$ 14,157

Key Project Activities

Current Period

- Constructed construction entrances/access in preparation of track work.
- Cleared portions of the grade of brush and trees.
- Installed sediments fence to protect sensitive areas.
- Began installation of Fiber Optic conduit.
- Responded to contractors RFIs and submittals.

Next Period

- Install first section of single track.
- Continue to install single track work.
- Continue to install Fiber Optic conduit.
- Continue responding to contractor RFIs and submittals.

Closely Monitored Issues

- Project designed by the Washington State Department of Transportation is funded through an ARRA grant made available by the FRA. Work for this project must be completed by March 2017 in order to leverage all available funding.
- Third-party fiber optic relocation work is on-going and requires coordination between contractors.

Scope

This project is currently undertaking a NEPA/SEPA environmental review and preliminary engineering for access improvements identified for the Puyallup Station. ST Board identified improvements include a new parking garage at the Puyallup Station, additional parking facilities, station area pedestrian access improvements, bicycle lane or path improvements near the station, secure bicycle storage area traffic improvements.

The project scope for Final Design will be determined with the concurrence of community and municipal stakeholders, following completion of conceptual and preliminary engineering.



Improving access to Puyallup Station

Schedule

	Start	Finish
Prelim. Engineering	Jun 2013	2016
Final Design	2016	2017
Construction	2018	2019

Scope/Schedule/Budget Variance

None to report this period.

Project Cost (\$s in thousands)

Phase	Lifetime Budget	Commitment to Date	Incurred to Date
Administration	\$ 757	\$ 340	\$ 352
Preliminary Engineering	\$ 2,680	\$ 2,320	\$ 1,301
Final Design	\$ -	\$ -	\$ -
Third Party Agreements	\$ -	\$ -	\$ -
ROW Acquisition and Permits	\$ 110	\$ 32	\$ 28
Construction	\$ -	\$ -	\$ -
Construction Services	\$ -	\$ -	\$ -
Project Total	\$ 3,547	\$ 2,692	\$ 1,681

Major Contracts

(\$s in thousands)

Vendor	Amount	Scope
Parametrix	\$4,512	CE/PE

Key Project Activities

Current Period

- Revised and updated environmental documents per State review.

Next Period

- Issue environmental determination.

Closely Monitored Issues

- None identified at this time.

Sounder Commuter Rail Sumner Station Improvements

Scope

This project is currently undertaking a NEPA/SEPA environmental review and preliminary engineering for access improvements identified for the Sumner Station. ST Board identified improvements include a new parking garage at the Sumner Station, station area pedestrian access improvements, secure bicycle storage at the station and station area traffic improvements.

The project scope for Final Design will be determined with the concurrence of community and municipal stakeholders, following completion of conceptual and preliminary engineering.



Improving access to Sumner Station

Schedule

	Start	Finish
Prelim. Engineering	Apr 2013	2016
Final Design	2016	2017
Construction	2018	2019

Scope/Schedule/Budget Variance

None to report this period.

Major Contracts (\$s in thousands)

Vendor	Amount	Scope
Parametrix	\$4,512	CE/PE

Project Cost (\$s in thousands)

Phase	Lifetime Budget	Commitment to Date	Incurred to Date
Administration	\$ 762	\$ 300	\$ 305
Preliminary Engineering	\$ 2,685	\$ 2,324	\$ 1,305
Final Design	\$ -	\$ -	\$ -
Third Party Agreements	\$ -	\$ -	\$ -
ROW Acquisition and Permits	\$ 2,912	\$ 2,720	\$ 2,708
Construction	\$ 113	\$ 97	\$ 97
Construction Services	\$ -	\$ -	\$ -
Project Total	\$ 6,472	\$ 5,441	\$ 4,415

Key Project Activities

Current Period

- Drafted environmental documents.

Next Period

- Establish term sheet with City of Sumner in progressing forward as a partner in seeking grant funding for the city's SR410 Interchange project.
- Issue draft environmental documents.

Closely Monitored Issues

- Sound Transit is planning to make a financial contribution to the city's SR 410 and Traffic Avenue interchange project (SR 410 Interchange Project) tied to pedestrian, bicycle, and transit access to the station, if other funding interchange project can be identified, consistent with the ST2 cost estimate.

This page intentionally left blank.