

Progress Report Sounder Program

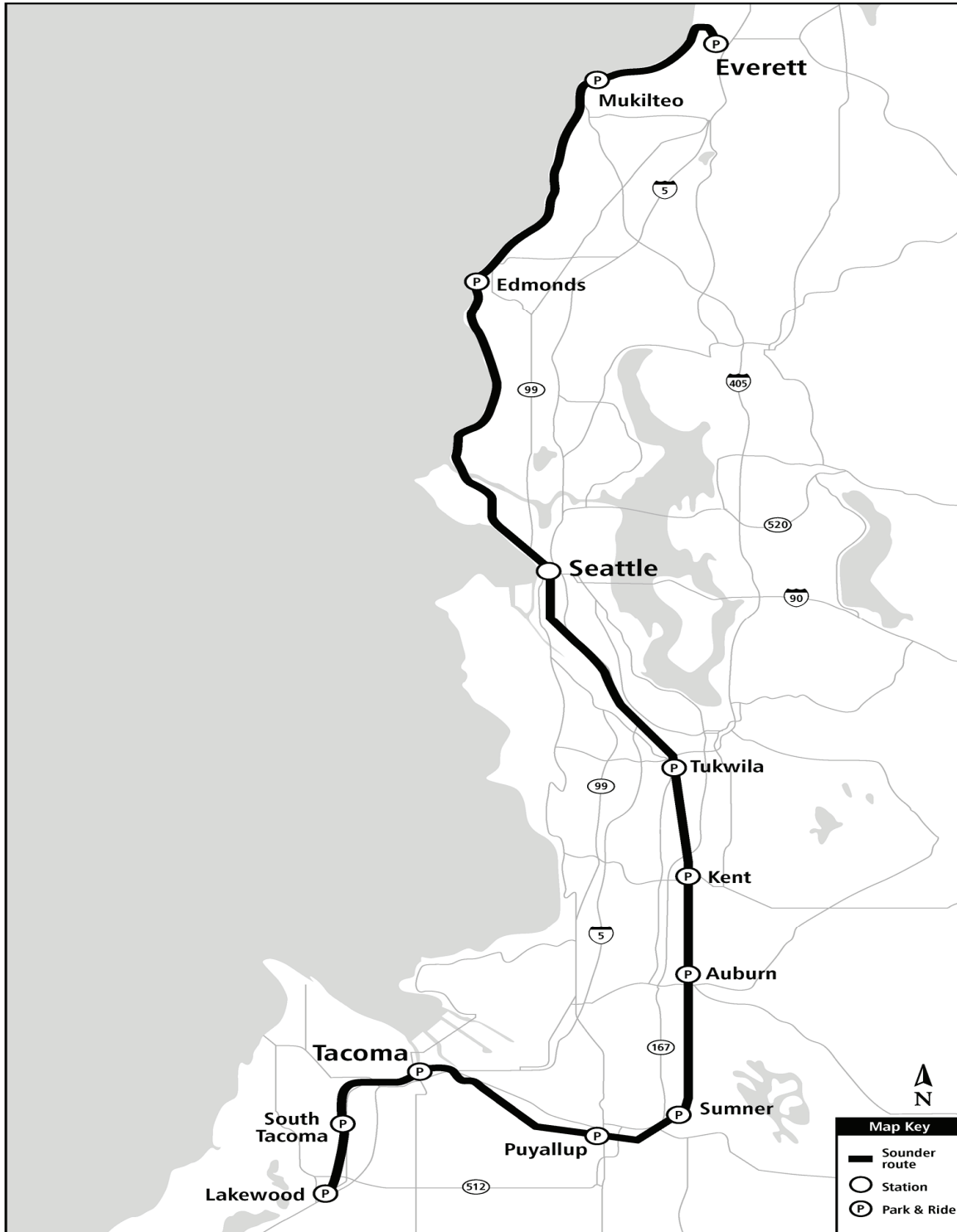


Setting window frames on bridge deck at Mukilteo Station.

March | 2015



Sounder Commuter Rail Program Overview



Sounder provides commuter rail service between Everett and Lakewood

Active Projects

Sounder South Expanded Service: Sound Transit has purchased four additional round trip easements from BNSF to expand service between Seattle and Lakewood. Sound Transit is responsible for completing all the environmental documentation, permitting, and mitigation associated with BNSF construction activity necessary to support those additional round trips. One of the four additional round trips has commenced, timing of the other three is dependent on the environmental work and ridership demand.

Sounder Yard & Shops Facility: Sound Transit is evaluating the need for an operations and maintenance base. Project development activities include confirmation of fleet operations, facilities and site programming, and alternative site identification.

Sounder Yard Expansion: Additional train service in the Everett to Lakewood corridor will require additional train sets and a location to store the trains overnight. The Lakewood Layover yard is being expanded by an additional track to accommodate this need and a permanent crew reporting facilities will be incorporated into the design, eliminating the need to lease space.

Positive Train Control: Federal regulations require all passenger train systems be equipped with PTC systems by December 2015. This necessitates upgrades to Sounder wayside signals, communications, and information management system along with additional on-board equipment. BNSF is installing wayside elements within the Everett to Tacoma corridor. This project includes wayside elements along the Tacoma-to-Lakewood corridor and modifications of locomotives and cab cars.

Mukilteo Station, South Platform: Full build out of this station includes construction of a second platform, overhead pedestrian bridge, elevators, stair tower, and passenger shelters.

Tukwila Station: Construction of a permanent station and platforms to replace the temporary wooden structure. This project includes the construction of a new expanded parking lot, bus loop with passenger shelters, bicycle storage area, new concrete platforms with improved passenger shelters all sited to accommodate future rail line expansion by BSNF.

Tacoma Trestle Track & Signal: Replacement of existing wooden trestle that is reaching the end of the functional service life with a double track concrete structure. This project will improve overall safety, capacity, and speed in this section of the corridor.

Puyallup Station Improvements: Preliminary engineering for access improvements at Puyallup Station. This project was identified as a result of the Station Access and Demand Project completed in 2013. Final scope of improvements will be determined at the completion of preliminary engineering.

Sumner Station Improvements: Preliminary engineering for access improvements at Sumner Station. This project was identified as a result of the Station Access and Demand Project completed in 2013. Final scope of improvements will be determined at the completion of preliminary engineering.

Point Defiance Bypass: Sound Transit will administer the construction of the Point Defiance Bypass Project, which will construct a new second track adjacent to Sound Transit's existing main line between South Tacoma (66th Street Bridge and Lakewood (Bridgeport Way) and install new rails, ties, and ballast on Sound Transit's existing track between Lakewood and Nisqually.



Sounder Commuter Rail Program Overview

Program Cost Summary

The Program Cost Summary information by project is summarized below. The Adopted Budget reflects the Lifetime Budget for each project through the approved project phase. Meaning that for projects approved for Final Design activities only, the Lifetime budget will be amended at some point to add budget for construction activities. Further information can be found in the following project pages.

Project	Adopted Budget	Commitment to Date	Incurred to Date	Estimated Final Cost	Adopted Budget vs. EFC
SOUNDER YARD & SHOPS FACILITY	\$ 6.3	\$ 2.4	\$ 1.5	\$ 6.3	\$ -
POSITIVE TRAIN CONTROL	\$ 53.1	\$ 42.4	\$ 24.8	\$ 53.1	\$ -
PUYALLUP STATION IMPROVEMENTS	\$ 3.5	\$ 2.5	\$ 1.1	\$ 3.5	\$ -
SUMNER STATION IMPROVEMENTS	\$ 6.5	\$ 5.2	\$ 3.8	\$ 6.5	\$ -
TACOMA TRESTLE TRACK & SIGNAL	\$ 34.6	\$ 17.3	\$ 10.6	\$ 34.6	\$ -
SOUNDER YARD EXPANSION	\$ 20.6	\$ 2.4	\$ 1.6	\$ 20.6	\$ -
PT DEFIANCE BYPASS	\$ 128.0	\$ 1.8	\$ 0.6	\$ 128.0	\$ -
MUKILTEO STATION-S PLATFORM	\$ 18.3	\$ 13.2	\$ 12.1	\$ 13.2	\$ -
TUKWILA STATION	\$ 46.0	\$ 37.8	\$ 36.6	\$ 40.4	\$ 5.6
SOUNDER SOUTH EXPANDED SERVICE	\$ 202.0	\$ 187.6	\$ 187.5	\$ 202.0	\$ -
Total	\$ 518.7	\$ 312.5	\$ 280.2	\$ 508.1	\$ 5.6

Table figures in millions.

Program Schedule

Activity Name	Start	Finish	2014	2015	2016	2017	2018	2019	2020	2021	2022	2023
Sounder Projects	03-Sep-01A	31-Dec-23										
Everett-to-Seattle Commuter Rail	29-May-13A	09-Jun-15										
\$31206 Mukilteo Sta & Platform	29-May-13A	09-Jun-15										
Tacoma-to-Seattle Commuter Rail	13-May-13A	31-Oct-14										
\$33236 Tukwila Station	13-May-13A	31-Oct-14										
Sounder South Expanded Service	03-Sep-01A	01-Sep-17										
Lakewood-to-Tacoma Commuter Rail	18-Mar-13A	31-Dec-23										
\$300026 - Sounder Yard Expansion	18-Mar-13A	26-Jun-17										
\$300011 - Positive Train Control	16-Jul-13A	30-Aug-16										
\$300021 - Tacoma Trestle	06-Aug-13A	31-Dec-17										
\$34150 - Point Defiance Bypass	01-Apr-13A	01-May-17										
\$300004 - Sounder Yard and Shop	01-Apr-13A	31-Dec-23										
\$300017 - Puyallup/Sumner Sta. Access	01-Jun-13A	30-Jun-19										
\$300017 - Puyallup Station Access and Expansion	01-Jun-13A	30-Jun-19										
\$300017 - Sumner Station Access and Expansion	01-Jun-13A	30-Jun-19										

Sound Transit Board Actions

Board motions and resolutions directly related to Sounder Program approved this period are summarized in the table.

Motion Number	Description	Date
	None to report this period.	

Third-Party Agreements

Tacoma-to-Lakewood

WSDOT / Amtrak / FRA

Negotiations have concluded for a Service Outcomes Agreement (SOA) and Stakeholder Agreement for investment of High-Speed Passenger Rail grant money into the corridor. The SOA captures Sound Transit's commitment to continued maintenance and operation of the corridor, and the Stakeholder Agreement provides funding to be applied to the completed construction on the D Street-to-M Street project and the Point Defiance Bypass project.

City of Tacoma

Sound Transit has negotiated the transfer of surplus properties acquired for the D Street-to-M Street project not needed for Sounder operations to the City of Tacoma. The transfer will occur as part of the purchase and sale agreement for the Tacoma Trestle Replacement Project. The surplus and purchase actions have been approved by the Sound Transit Board.

Construction Safety

Currently there is one Agency-led active construction contract under the Sounder program:

- Mukilteo Station, South Platform

No accidents or incidents were reported during this period.

Quality Assurance

Quality Assurance continues to support the Sounder program through review of design and construction documents and periodic audits of projects in design, constructions, and operations.

Description	1st Quarter 2015	Notes
Audits/Surveillances Performed	0 Audits 0 Surveillances	None
Audits/Surveillances Reports Issued	0 Audits 0 Surveillances	None
Reports in Progress	0 Reports	None
Audits/Surveillances Rescheduled	0 Audits 0 Surveillances	None

This page intentionally left blank.

Sounder Commuter Rail Sounder South Expanded Service



Scope

Sound Transit has purchased four additional commuter rail easements from BNSF for expanding service between Seattle and Lakewood. A number of track and signal improvements are needed between Seattle and Tacoma to accommodate additional service.

BNSF is currently completing design improvements and intends to incrementally complete construction as additional service is added. Additional round trips are planned for 2016 and 2017.



Additional morning and evening service between Seattle and Lakewood

Schedule

	Start	Finish
Prelim. Engineering	Oct 2010	Mar 2012
Final Design	Aug 2011	TBD
Construction	TBD	Sep 2017

Scope/Schedule/Budget Variance

None to report this period.

Major Contracts (\$s in thousands)

Vendor	Amount	Scope
ESA Adolphson	\$416	PE

Project Cost (\$s in thousands)

Phase	Lifetime Budget	Commitment to Date	Incurred to Date
Administration	\$ 5,650	\$ 1,048	\$ 1,051
Preliminary Engineering	\$ 1,007	\$ 440	\$ 393
Final Design	\$ 400	\$ -	\$ -
Third Party Agreements	\$ -	\$ -	\$ -
ROW Acquisition and Permits	\$ 186,485	\$ 185,182	\$ 185,182
Construction	\$ 8,426	\$ 897	\$ 897
Construction Services	\$ -	\$ -	\$ -
Project Total	\$ 201,968	\$ 187,567	\$ 187,523

Key Activities

Current Period

- Notified BNSF Railway that all required environmental permits for Easement 3 have been acquired.
- Continued work with BNSF, King County, and Tribes to address the Easement 4 culvert impacts along the rail corridor.

Next Period

- Execute a cost reimbursements to participate in King County's Environmental In-Lieu Reserve Mitigation Program for Easement 4.

Closely Monitored Issues

- Negotiation with permitting agencies on mitigation for wetland and stream impacts.
- Issuance of environmental permits.
- Potential for additional mitigation and associated NEPA environmental documentation.

Scope

Final planning and analysis, environmental clearance and preliminary engineering for yard and shop operations and maintenance facilities to support expanded Sounder service.

Preliminary project development activities (final planning, revised cost estimating and preliminary siting studies) have been completed; environmental analysis continues.



Amtrak currently provides Sounder vehicle maintenance

Schedule

	Start	Finish
Prelim. Engineering	Jul 2013	TBD
Final Design	TBD	TBD
Construction	TBD	TBD

Scope/Schedule/Budget Variance

None to report this period.

Project Cost (\$s in thousands)

Phase	Lifetime Budget	Commitment to Date	Incurred to Date
Administration	\$ 860	\$ 268	\$ 270
Preliminary Engineering	\$ 5,116	\$ 2,091	\$ 1,195
Final Design	\$ -	\$ -	\$ -
Third Party Agreements	\$ -	\$ -	\$ -
ROW Acquisition and Permits	\$ 305	\$ 37	\$ 36
Construction	\$ -	\$ -	\$ -
Construction Services	\$ -	\$ -	\$ -
Project Total	\$ 6,281	\$ 2,396	\$ 1,501

Major Contracts (\$s in thousands)

Vendor	Amount	Scope
Parsons Brinckerhoff	\$2,300	PE/ED

Key Activities

Current Period

- Drafted the design consultant's preliminary engineering scope of work.

Next Period

- Conduct preliminary procurement project delivery method evaluation in advance to the start of preliminary engineering design.

Closely Monitored Issues

- Alignment of project scope with budget.

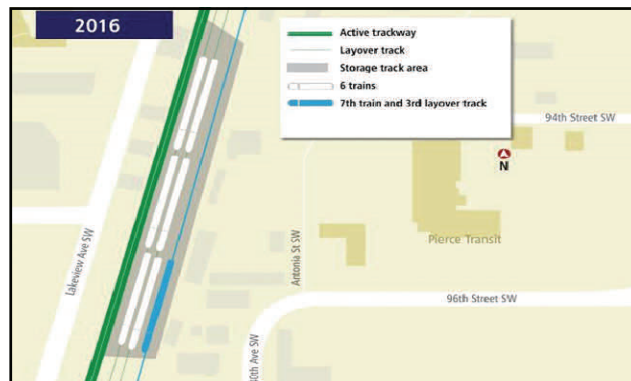
Sounder Commuter Rail Sounder Yard Expansion



Scope

The Sounder Yard Expansion project includes design and construction of a third storage track and civil improvements to accommodate seven Sounder train sets at the Lakewood layover facility.

This additional storage capacity is necessary when additional Sounder South trains, approved in ST2, begin between Tacoma and Seattle in 2016 in advance of completion of the Sounder Yard & Shops project.



Sounder Yard Expansion will increase storage capacity for Sounder 7th train set

Schedule

	Start	Finish
Prelim. Engineering	Jul 2013	Jun 2014
Final Design	Jun 2014	Sep 2015
Construction	Jun 2015	Sep 2016

Scope/Schedule/Budget Variance

None to report this period.

Project Cost (\$ in thousands)

Phase	Lifetime Budget	Commitment to Date	Incurred to Date
Administration	\$ 1,200	\$ 314	\$ 322
Preliminary Engineering	\$ 2,150	\$ 1,784	\$ 1,180
Final Design	\$ -	\$ -	\$ -
Third Party Agreements	\$ -	\$ -	\$ -
ROW Acquisition and Permits	\$ 400	\$ 100	\$ 46
Construction	\$ 15,400	\$ -	\$ -
Construction Services	\$ 1,400	\$ 160	\$ 10
Project Total	\$ 20,550	\$ 2,358	\$ 1,558

Major Contracts (\$ in thousands)

Vendor	Amount	Scope
Parsons Brinkerhoff	\$1,841	PE

Key Activities

Current Period

- Issued Request for Qualifications to perspective Design-Build teams.
- Evaluated Statements of Qualifications and short list Design-Build teams to receive Request for Proposals.
- Continued Right-of-Way coordination with property owners and coordination with utilities to be relocated.

Next Period

- Issue short list of finalists.
- Conduct Concept/Alternative Technical Concept meeting with short listed firms.

Closely Monitored Issues

- Right-of-Way acquisition.
- Utility relocations.

Scope

Positive Train Control (PTC) systems are integrated command, control, communications, and information systems for controlling train movements. The systems improve railroad safety by significantly reducing the probability of collisions between trains, casualties to railway workers and over-speed accidents.

Federal regulations require passenger train systems be equipped with PTC systems by December 2015.



Improving safety along the Tacoma-to-Lakewood corridor

Schedule

	Start	Finish
Prelim. Engineering	N/A	N/A
Final Design	Jul 2013	May 2014
Construction	Jul 2014	Dec 2015

Scope/Schedule/Budget Variance

None to report this period.

Major Contracts (\$s in thousands)

Vendor	Amount	Scope
Xorail, Inc.	\$34,157	Design/PTC System install
LTK Engineering Svcs.	\$2,287	CM/Engineering Support Svcs.

Project Cost (\$s in thousands)

Phase	Lifetime Budget	Commitment to Date	Incurred to Date
Administration	\$ 2,238	\$ 924	\$ 943
Preliminary Engineering	\$ -	\$ -	\$ -
Final Design	\$ 279	\$ 226	\$ 226
Third Party Agreements	\$ 4,267	\$ 3,900	\$ 2,510
ROW Acquisition and Permits	\$ -	\$ -	\$ -
Construction	\$ 40,484	\$ 35,049	\$ 20,642
Construction Services	\$ 4,062	\$ 2,287	\$ 456
Contingency	\$ 1,725	\$ -	\$ -
Project Total	\$ 53,055	\$ 42,386	\$ 24,777

Key Activities

Current Period

- Continued work with Xorail and Amtrak to work out onboard install processes.
- Reviewed installation test documents.
- Reviewed documentation of wayside installation closeout items.
- Continued wayside testing on track database and critical feature validation with BNSF.

Next Period

- Continuing onboard production installs.
- Submit PTC Test request to FRA.
- Complete wayside testing database and critical feature validation with BNSF support.

Closely Monitored Issues

- Availability of potential Grant funding.
- Coordination of Sound Transit work efforts with BNSF schedule for PTC implementation.
- Completion of project by federal compliance deadline of Dec. 2015.

Sounder Commuter Rail Mukilteo Station, South Platform



Scope

The Mukilteo Station South Platform project includes construction of a second platform, shelter structures, stairs, elevator towers and a pedestrian bridge connecting the south platform with the existing north platform.



Artist's rendering of Mukilteo Station

Schedule

	Start	Finish
Prelim. Engineering	Feb 2001	Apr 2005
Final Design	Aug 2007	Sep 2012
Construction	Jan 2014	Apr 2015

Scope/Schedule/Budget Variance

None to report this period.

Major Contracts (\$s in thousands)

Vendor	Amount	Scope
AECOM	\$2,154	FD
CA Carey Corp.	\$7,202	CON
KBA	\$1,500	CM Services

Project Cost (\$s in thousands)

Phase	Lifetime Budget	Commitment to Date	Incurred to Date
Administration	\$ 1,128	\$ 1,058	\$ 1,067
Preliminary Engineering	\$ -	\$ -	\$ -
Final Design	\$ 2,447	\$ 2,240	\$ 2,239
Third Party Agreements	\$ 131	\$ -	\$ -
ROW Acquisition and Permits	\$ 3,465	\$ 436	\$ 428
Construction	\$ 9,560	\$ 7,960	\$ 7,037
Construction Services	\$ 1,582	\$ 1,500	\$ 1,338
Project Total	\$ 18,313	\$ 13,194	\$ 12,109

Key Activities

Current Period

- Installation of metal roof, storefront and glass, elevator, and wiring and fixtures.
- Started commissioning activities.

Next Period

- Completion of commissioning activities.
- Substantial completion
- Addressing punchlist items.

Closely Monitored Issues

- BNSF Flagging (Form B) requirements.
- Mukilteo lane closure activities.

Scope

The Tukwila Station includes permanent boarding platforms with canopies, improved pedestrian access, and commuter parking improvements, a bus transfer facility, and secure bicycle parking. The platform will be constructed south of Longacres Way and west of the BNSF railroad tracks.



Artist's rendering of Tukwila Station

Schedule

	Start	Finish
Prelim. Engineering	Jul 2007	Aug 2009
Final Design	Jan 2012	Sep 2012
Construction	Feb 2013	Jan 2015

Scope/Schedule/Budget Variance

None to report this period.

Major Contracts (\$\$ in thousands)

Vendor	Amount	Scope
KPFF	\$5,441	PE/ED/FD
Absher	\$16,880	CON
Lin & Associates	\$1,515	CM Services

Project Cost (\$\$ in thousands)

Phase	Lifetime Budget	Commitment to Date	Incurred to Date
Administration	\$ 2,773	\$ 1,600	\$ 1,609
Preliminary Engineering	\$ 1,101	\$ 1,101	\$ 1,101
Final Design	\$ 4,724	\$ 4,559	\$ 4,492
Third Party Agreements	\$ -	\$ -	\$ -
ROW Acquisition and Permits	\$ 11,009	\$ 10,408	\$ 10,361
Construction	\$ 24,281	\$ 18,522	\$ 17,502
Construction Services	\$ 2,081	\$ 1,560	\$ 1,560
Project Total	\$ 45,969	\$ 37,750	\$ 36,625

Key Activities

Current Period

- Continued work on Substantial completion punch list.
- Completion of Commissioning and training.

Next Period

- Issue acceptance.

Closely Monitored Issues

- Coordination on platform closures between BNSF, ST, and Amtrak.

Sounder Commuter Rail Tacoma Trestle Track & Signal



Scope

Replacement of the single tracked Tacoma Trestle with a structure capable of accommodating double tracking to improve passenger and commuter rail service reliability and reduce delays for freight movement through Tacoma.



Project will replace existing Tacoma train trestle

Schedule

	Start	Finish
Prelim. Engineering	Aug 2013	Oct 2014
Final Design	Nov 2014	Jul 2015
Construction	Jan 2016	Dec 2017

Scope/Schedule/Budget Variance

None to report this period.

Project Cost (\$s in thousands)

Phase	Lifetime Budget	Commitment to Date	Incurred to Date
Administration	\$ 1,806	\$ 1,072	\$ 1,135
Preliminary Engineering	\$ 5,035	\$ 3,799	\$ 3,414
Final Design	\$ 10,374	\$ 6,794	\$ 1,542
Third Party Agreements	\$ -	\$ -	\$ -
ROW Acquisition and Permits	\$ 11,914	\$ 4,976	\$ 4,455
Construction	\$ -	\$ -	\$ -
Construction Services	\$ 5,425	\$ 660	\$ 41
Project Total	\$ 34,554	\$ 17,301	\$ 10,587

Major Contracts (\$s in thousands)

Vendor	Amount	Scope
David Evans & Associates	\$12,132	PE/ED/FD

Key Activities

Current Period

- Continued work on real estate appraisals and offers.
- Continued technical coordination with private utility companies to address the utility conflicts on the project site.
- Transmitted the 60% design for review and comments that included both the trestle and platform extension components.

Next Period

- Conduct a test pile program on the project site for a better understanding of the soil conditions prior to completion of final design.
- Schedule to transit the 90% design submittal.
- Baseline project scope, schedule, and budget.

Closely Monitored Issues

- Geotechnical and archaeological investigations.
- Coordination with WSDOT on the design integration of the platform extension to the Trestle design package and signal design integration of the ST Tacoma Trestle Project and WSDOT Point Defiance By-Pass Project.

Scope

This project is currently undertaking a NEPA/SEPA environmental review and preliminary engineering for access improvements identified for the Puyallup Station. ST Board identified improvements include a new parking garage at the Puyallup Station, additional parking facilities, station area pedestrian access improvements, bicycle lane or path improvements near the station, secure bicycle storage area traffic improvements.

The project scope for Final Design will be determined with the concurrence of community and municipal stakeholders, following completion of conceptual and preliminary engineering.



Improving access to Puyallup Station

Schedule

	Start	Finish
Prelim. Engineering	Jun 2013	2016
Final Design	2016	2018
Construction	2019	2020

Scope/Schedule/Budget Variance

None to report this period.

Major Contracts

(\$s in thousands)

Vendor	Amount	Scope
Parametrix	\$4,512	CE/PE

Project Cost (\$s in thousands)

Phase	Lifetime Budget	Commitment to Date	Incurred to Date
Administration	\$ 757	\$ 205	\$ 200
Preliminary Engineering	\$ 2,680	\$ 2,260	\$ 718
Final Design	\$ -	\$ -	\$ -
Third Party Agreements	\$ -	\$ -	\$ -
ROW Acquisition and Permits	\$ 110	\$ 2,692	\$ 2,692
Construction	\$ -	\$ 97	\$ -
Construction Services	\$ -	\$ -	\$ -
Project Total	\$ 3,547	\$ 5,254	\$ 3,610

Key Activities

Current Period

- Continued environmental and work with City of Puyallup.
- Continued evaluation and development of access improvements and Conceptual Engineering.

Next Period

- Complete Conceptual Engineering.
- Continue work on environmental evaluation.

Closely Monitored Issues

- The CE schedule has been updated to reflect an additional month of CE in order to consider the City of Puyallup's garage sizing issues.

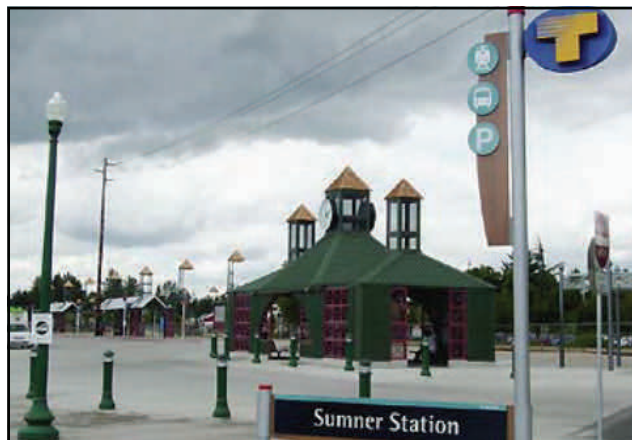
Sounder Commuter Rail Sumner Station Improvements



Scope

This project is currently undertaking a NEPA/SEPA environmental review and preliminary engineering for access improvements identified for the Sumner Station. ST Board identified improvements include a new parking garage at the Sumner Station, station area pedestrian access improvements, secure bicycle storage at the station and station area traffic improvements.

The project scope for Final Design will be determined with the concurrence of community and municipal stakeholders, following completion of conceptual and preliminary engineering.



Improving access to Sumner Station

Schedule

	Start	Finish
Prelim. Engineering	Apr 2013	2016
Final Design	2016	2018
Construction	2019	2020

Scope/Schedule/Budget Variance

None to report this period.

Project Cost (\$s in thousands)

Phase	Lifetime Budget	Commitment to Date	Incurred to Date
Administration	\$ 762	\$ 144	\$ 143
Preliminary Engineering	\$ 2,685	\$ 2,260	\$ 511
Final Design	\$ -	\$ -	\$ -
Third Party Agreements	\$ -	\$ -	\$ -
ROW Acquisition and Permits	\$ 2,912	\$ 2,692	\$ 2,692
Construction	\$ 113	\$ -	\$ -
Construction Services	\$ -	\$ -	\$ -
Project Total	\$ 6,472	\$ 5,096	\$ 3,346

Major Contracts (\$s in thousands)

Vendor	Amount	Scope
Parametrix	\$4,512	CE/PE

Key Activities

Current Period

- Continued environmental and work with City of Sumner.
- Continued evaluation and development of access improvements and Conceptual Engineering.

Next Period

- Complete Conceptual Engineering.
- Continue work on environmental evaluation.

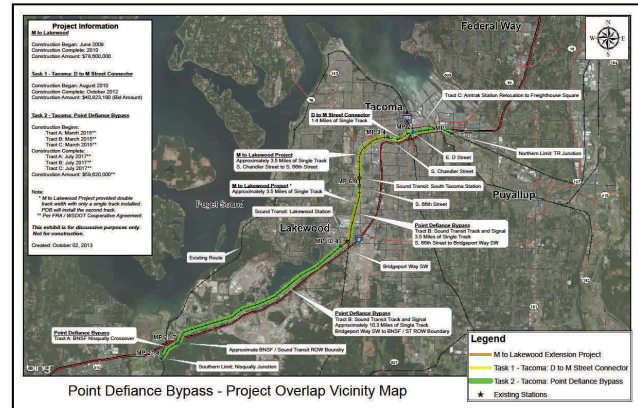
Closely Monitored Issues

- The CE schedule has been updated to reflect an additional month of CE in order to consider the City of Sumner's garage sizing issues.

Scope

Sound Transit will administer the construction of the Point Defiance Bypass project which will construct a new second track adjacent to Sound Transit's existing main line between South Tacoma (66th Street Bridge) and Lakewood (Bridgeport Way) and install new rails, ties, and ballast on Sound Transit's existing track between Lakewood and Nisqually.

Improvements will be made at the connection to BNSF's main line near Nisqually and safety improvements will be made at some existing at-grade crossings within the project corridor.



Point Defiance Bypass Route

Schedule

	Start	Finish
Prelim. Engineering	Jan 2012	Apr 2014
Final Design	Jan 2014	Apr 2015
Construction	Aug 2015	Mar 2017

Scope/Schedule/Budget Variance

None to report this period.

Major Contracts (\$s in thousands)

Vendor	Amount	Scope
HNTB	\$1,180	CM Services

Project Cost (\$s in thousands)

Phase	Lifetime Budget	Commitment to Date	Incurred to Date
Administration	\$ 2,700	\$ 451	\$ 423
Preliminary Engineering	\$ -	\$ -	\$ -
Final Design	\$ 200	\$ 126	\$ 93
Third Party Agreements	\$ -	\$ -	\$ -
ROW Acquisition and Permits	\$ 1,000	\$ 40	\$ 40
Construction	\$ 114,500	\$ -	\$ -
Construction Services	\$ 9,600	\$ 1,191	\$ 76
Project Total	\$ 128,000	\$ 1,808	\$ 632

Key Activities

Current Period

- On-going design coordination with stakeholders, effected jurisdictions, and private utility relocation work.
- Participated in WSDOT hosted partnering session.

Next Period

- Complete Final Design.
- Advertise project for Construction.
- Finalize addendum for construction contract.
- Coordination with project stakeholders, effected jurisdiction & fiber optic utility owners.

Closely Monitored Issues

- This project, designed by the Washington State Department of Transportation is funded through an ARA grant made available by the FRA. Work for this project must be completed by March 2017 in order to leverage all available funding.