

Progress Report

Sounder Program

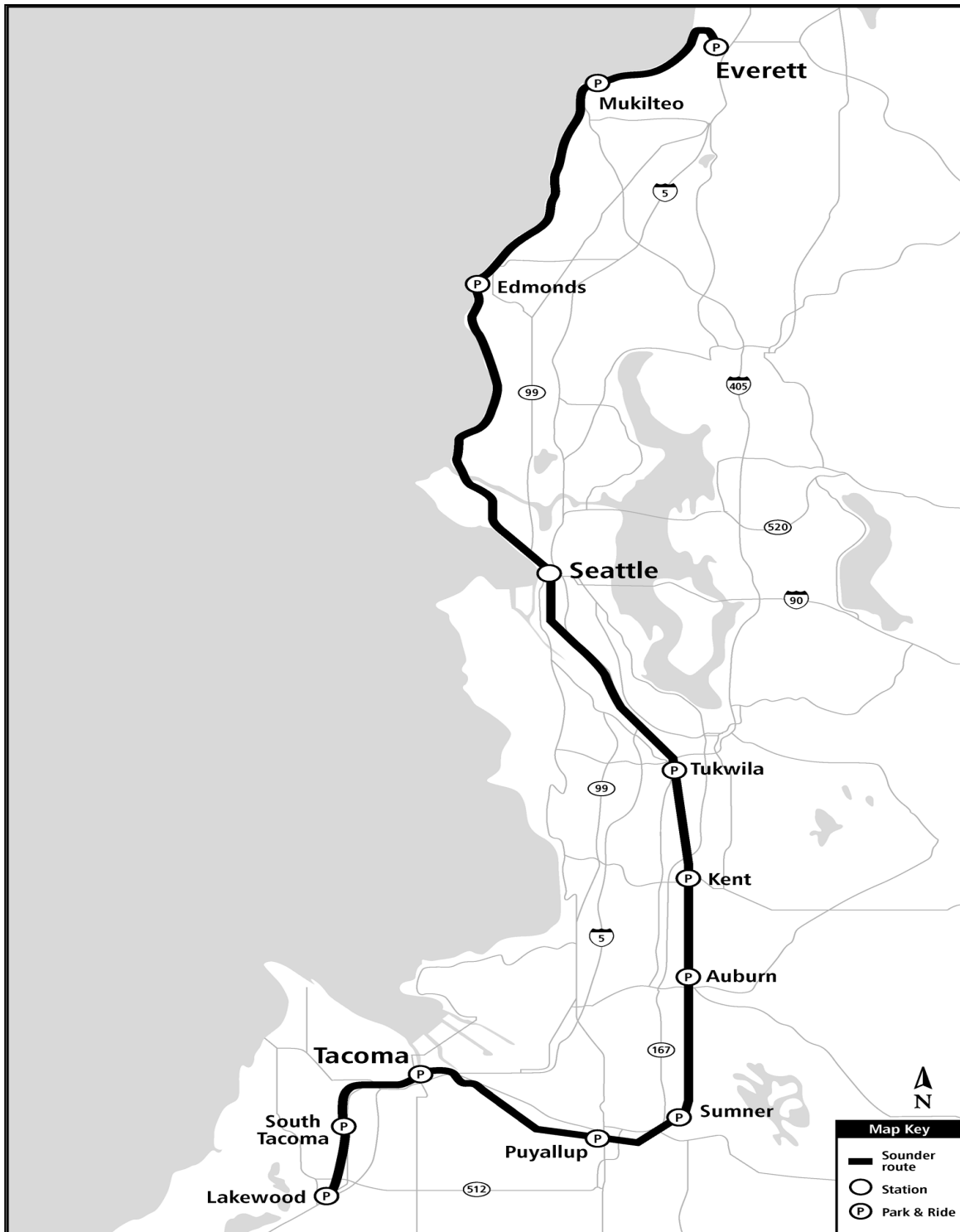


C.A. Carey, Mukilteo Station construction contractor, prepares to lift artist Linda Beaumont's "Sky Canoe" into the pedestrian bridge.

June | 2015



Sounder Commuter Rail Program Overview



Sounder provides commuter rail service between Everett and Lakewood

Projects

Sounder South Expanded Service: Sound Transit has purchased four additional round trip easements from BNSF to expand service between Seattle and Lakewood. Sound Transit is responsible for completing all the environmental documentation, permitting, and mitigation associated with BNSF construction activity necessary to support those additional round trips. One of the four additional round trips has commenced, timing of the other three is dependent on the environmental work and ridership demand.

Sounder Yard & Shops Facility: Sound Transit is evaluating the need for an operations and maintenance base. Project development activities include confirmation of fleet operations, facilities and site programming, and alternative site identification.

Sounder Yard Expansion: Additional train service in the Everett to Lakewood corridor will require additional train sets and a location to store the trains overnight. The Lakewood Layover yard is being expanded by an additional track to accommodate this need and a permanent crew reporting facilities will be incorporated into the design, eliminating the need to lease space.

Positive Train Control: Federal regulations require all passenger train systems be equipped with PTC systems by December 2015. This necessitates upgrades to Sounder wayside signals, communications, and information management system along with additional on-board equipment. BNSF is installing wayside elements within the Everett to Tacoma corridor. This project includes wayside elements along the Tacoma-to-Lakewood corridor and modifications of locomotives and cab cars.

Mukilteo Station, South Platform: Full build-out of this station includes construction of a second platform, overhead pedestrian bridge, elevators, stair tower, and passenger shelters.

Tukwila Station: Construction of a permanent station and platforms to replace the temporary wooden structure. This project includes the construction of a new expanded parking lot, bus loop with passenger shelters, bicycle storage area, new concrete platforms with improved passenger shelters all sited to accommodate future rail line expansion by BSNF.

Tacoma Trestle Track & Signal: Replacement of existing wooden trestle that is reaching the end of the functional service life with a double track concrete structure. This project will improve overall safety, capacity, and speed in this section of the corridor.

Point Defiance Bypass: Sound Transit will administer the construction of the Point Defiance Bypass Project, which will construct a new second track adjacent to Sound Transit's existing main line between South Tacoma (66th Street Bridge and Lakewood (Bridgeport Way) and install new rails, ties, and ballast on Sound Transit's existing track between Lakewood and Nisqually.

Puyallup Station Improvements: Preliminary engineering for access improvements at Puyallup Station. This project was identified because of the Station Access and Demand Project completed in 2013. Final scope of improvements will be determined at the completion of preliminary engineering.

Sumner Station Improvements: Preliminary engineering for access improvements at Sumner Station. This project was identified because of the Station Access and Demand Project completed in 2013. Final scope of improvements will be determined at the completion of preliminary engineering.

Program Cost Summary

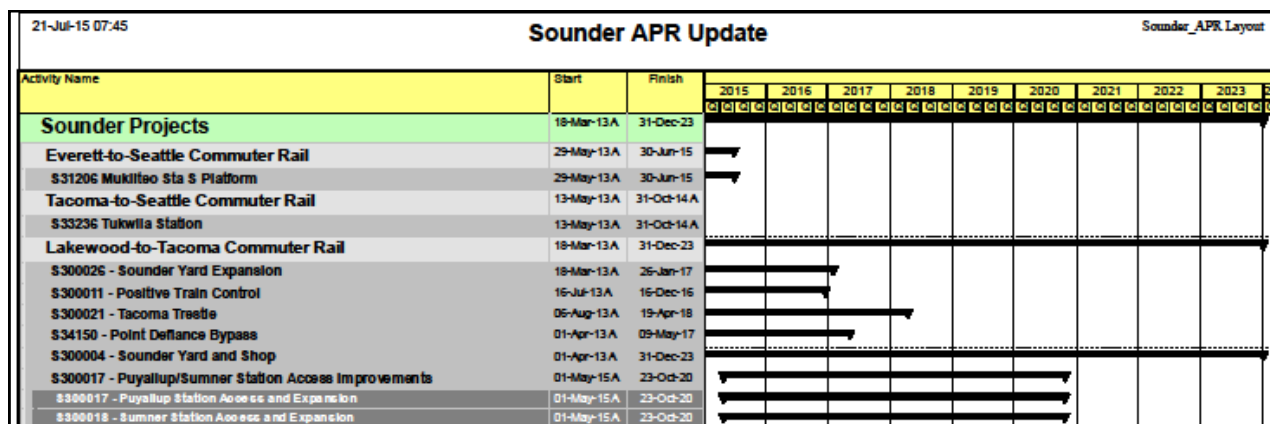
The Program Cost Summary information by project is summarized below. The Adopted Budget reflects the Life-time Budget for each project through the approved project phase. Meaning that for projects approved for Final Design activities only, the Lifetime Budget will be amended at some point to add budget for construction activities. Further information can be found in the following project pages.

Project	Adopted Budget	Commitment to Date	Incurred to Date	Estimated Final Cost	Adopted Budget vs EFC
Sounder Yard & Shops Facility	\$ 6.3	\$ 2.4	\$ 1.6	\$ 6.3	\$ -
Positive Train Control	\$ 53.1	\$ 42.5	\$ 26.8	\$ 53.1	\$ -
Puyallup Station Improvements	\$ 3.5	\$ 2.5	\$ 1.3	\$ 3.5	\$ -
Sumner Station Improvements	\$ 6.5	\$ 5.3	\$ 4.1	\$ 6.5	\$ -
Tacoma Trestle Track & Signal	\$ 120.5	\$ 20.2	\$ 15.0	\$ 120.5	\$ -
Sounder Yard Expansion	\$ 20.6	\$ 2.7	\$ 1.8	\$ 20.6	\$ -
PT. Defiance Bypass	\$ 128.0	\$ 2.0	\$ 0.9	\$ 128.0	\$ -
Mukilteo Station-S Platform	\$ 18.3	\$ 13.8	\$ 14.0	\$ 18.3	\$ -
Tukwila Station	\$ 46.0	\$ 37.9	\$ 36.7	\$ 40.4	\$ 5.6
Sounder South Expanded Service	\$ 202.0	\$ 194.1	\$ 194.1	\$ 202.0	\$ -
Total Sounder	\$ 604.7	\$ 323.4	\$ 296.3	\$ 599.1	\$ 5.6

Table figures in millions.

Program Schedule

Schedule for active projects are summarized below. Further information can be found in the following project pages.



Third-Party Agreements

Tacoma-to-Lakewood

WSDOT / Amtrak / FRA

Negotiations have concluded for a Service Outcomes Agreement (SOA) and Stakeholder Agreement for investment of High-Speed Passenger Rail grant money into the corridor. The SOA captures Sound Transit's commitment to continued maintenance and operation of the corridor, and the Stakeholder Agreement provides funding to be applied to the completed construction on the D Street-to-M Street project and the Point Defiance Bypass project.

City of Tacoma

Sound Transit has negotiated the transfer of surplus properties acquired for the D Street-to-M Street project not needed for Sounder operations to the City of Tacoma. The transfer will occur as part of the purchase and sale agreement for the Tacoma Trestle Replacement Project. The Sound Transit Board has approved the surplus and purchase actions.

Construction Safety

Currently there is two Agency-led active construction contracts under the Sounder program:

- Mukilteo Station, South Platform
- Tukwila Station

No accidents or incidents were reported during this period.

Quality Assurance

Quality Assurance continues to support the Sounder program through review of design and construction documents and periodic audits of projects in design, constructions, and operations.

Description	2nd Quarter 2015	Notes
Audits/Surveillances Performed	1 Audit 0 Surveillances	A-D-SND-TacomaTrestle-15-01 90% Design Submittal
Audits/Surveillances Reports Issued	0 Audits 0 Surveillances	None
Reports in Progress	1 Report	A-D-SND-TacomaTrestle-15-01 90% Design Submittal
Audits/Surveillances Rescheduled	0 Audits 0 Surveillances	None

Sound Transit Board Actions

Board motions and resolutions directly related to Sounder Program approved this period are summarized in the table.

Motion Number	Description	Date
M2015-43	King County Mitigation Reserves Program Agreement for Sounder South Expansion Project	05/28/15

This page intentionally left blank.

Sounder Commuter Rail Sounder South Expanded Service



Scope

Sound Transit has purchased four additional commuter rail easements from BNSF for expanding service between Seattle and Lakewood. A number of track and signal improvements are needed between Seattle and Tacoma to accommodate additional service.

BNSF is currently completing design improvements and intends to incrementally complete construction as additional service is added. Additional round trips are planned for 2016 and 2017.



Additional morning and evening service between Seattle and Lakewood

Schedule

	Start	Finish
Prelim. Engineering	Oct 2010	Mar 2012
Final Design	Aug 2011	TBD
Construction	TBD	Sep 2017

Scope/Schedule/Budget Variance

None to report this period.

Major Contracts (\$s in thousands)

Vendor	Amount	Scope
ESA Adolfson	\$416	PE

Project Cost (\$s in thousands)

Phase	Lifetime Budget	Commitment to Date	Incurred to Date
Administration	\$ 5,650	\$ 1,061	\$ 1,062
Preliminary Engineering	\$ 1,007	\$ 440	\$ 417
Final Design	\$ 400	\$ -	\$ -
Third Party Agreements	\$ -	\$ -	\$ -
ROW Acquisition and Permits	\$ 186,485	\$ 185,182	\$ 185,182
Construction	\$ 8,426	\$ 7,405	\$ 7,405
Construction Services	\$ -	\$ -	\$ -
Project Total	\$ 201,968	\$ 194,088	\$ 194,066

Key Project Activities

Current Period

- Executed a cost reimbursement agreement to participate in County's Environmental In-Lieu Reserve Program for Easement 4.
- Purchased the wetland mitigation credits from King County, fulfilling the wetland mitigation requirements for this project.

Next Period

- Notify the BNSF Railway that all of required environmental clearances for Easement 4 have been obtained.
- Begin construction activities by BNSF.

Closely Monitored Issues

- Negotiation with permitting agencies on culvert replacement continues. ST and the permitting agencies will need to reach concurrence on a culvert replacement option by year-end 2015.

Sounder Commuter Rail Sounder Yard & Shops Facility

Scope

Final planning and analysis, environmental clearance and preliminary engineering for yard and shop operations and maintenance facilities to support expanded Sounder service.

Preliminary project development activities (final planning, revised cost estimating and preliminary siting studies) have been completed; environmental analysis continues.



Amtrak currently provides Sounder vehicle maintenance

Schedule

	Start	Finish
Prelim. Engineering	Oct 2015	TBD
Final Design	TBD	TBD
Construction	TBD	TBD

Scope/Schedule/Budget Variance

None to report this period.

Project Cost (\$s in thousands)

Phase	Lifetime Budget	Commitment to Date	Incurred to Date
Administration	\$ 860	\$ 286	\$ 289
Preliminary Engineering	\$ 5,116	\$ 2,091	\$ 1,290
Final Design	\$ -	\$ -	\$ -
Third Party Agreements	\$ -	\$ -	\$ -
ROW Acquisition and Permits	\$ 305	\$ 37	\$ 36
Construction	\$ -	\$ -	\$ -
Construction Services	\$ -	\$ -	\$ -
Project Total	\$ 6,281	\$ 2,414	\$ 1,615

Major Contracts (\$s in thousands)

Vendor	Amount	Scope
Parsons Brinckerhoff	\$2,300	PE/ED

Key Project Activities

Current Period

- Continued work on updating the conceptual engineering plans and cost estimates.
- Started environmental work.

Next Period

- Transit the updated CE plans and cost estimates.
- Method evaluation in advance to the start of preliminary engineering design.

Closely Monitored Issues

- Alignment of project scope with budget.

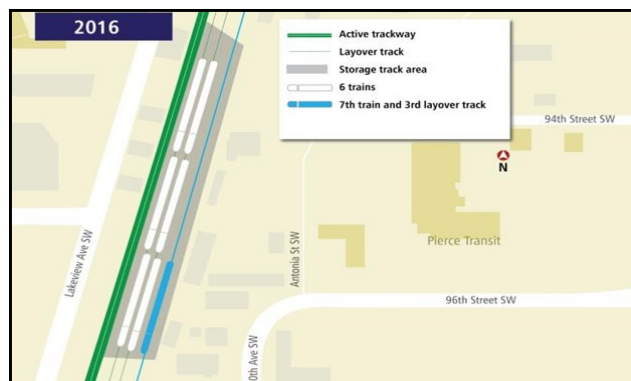
Sounder Commuter Rail Sounder Yard Expansion



Scope

The Sounder Yard Expansion project includes design and construction of a third storage track and civil improvements to accommodate seven Sounder train sets at the Lakewood layover facility.

This additional storage capacity is necessary when additional Sounder South trains, approved in ST2, begin between Tacoma and Seattle in 2016 in advance of completion of the Sounder Yard & Shops project.



Sounder Yard Expansion will increase storage capacity for Sounder 7th train set

Schedule

	Start	Finish
Prelim. Engineering	Jul 2013	Jun 2014
Final Design	Jun 2014	Dec 2015
Construction	Jan 2016	Apr 2017

Scope/Schedule/Budget Variance

None to report this period.

Project Cost (\$s in thousands)

Phase	Lifetime Budget	Commitment to Date	Incurred to Date
Administration	\$ 1,200	\$ 376	\$ 375
Preliminary Engineering	\$ 2,150	\$ 1,784	\$ 1,257
Final Design	\$ -	\$ -	\$ -
Third Party Agreements	\$ -	\$ -	\$ -
ROW Acquisition and Permits	\$ 400	\$ 284	\$ 136
Construction	\$ 15,400	\$ 75	\$ -
Construction Services	\$ 1,400	\$ 160	\$ 46
Project Total	\$ 20,550	\$ 2,679	\$ 1,814

Major Contracts (\$s in thousands)

Vendor	Amount	Scope
Parsons Brinkerhoff	\$1,841	PE

Key Project Activities

Current Period

- Issued shortlist of finalists.
- Evaluated Statements of Qualifications and shortlist.
- Received Request for Proposals.
- Continued Right-of-Way coordination with property owners and coordination with utilities to be relocated.

Next Period

- Conduct Concept/Alternative Technical Concept meeting with shortlisted firms.

Closely Monitored Issues

- Right-of-Way acquisition.
- Utility relocations.

Scope

Positive Train Control (PTC) systems are integrated command, control, communications, and information systems for controlling train movements. The systems improve railroad safety by significantly reducing the probability of collisions between trains, casualties to railway workers and over-speed accidents.

Federal regulations require passenger train systems be equipped with PTC systems by December 2015.



Improving safety along the Tacoma-to-Lakewood corridor

Schedule

	Start	Finish
Prelim. Engineering	N/A	N/A
Final Design	Jul 2013	May 2014
Construction	Jul 2014	Dec 2015

Scope/Schedule/Budget Variance

None to report this period.

Major Contracts (\$s in thousands)

Vendor	Amount	Scope
Xorail, Inc.	\$34,157	Design/PTC System install
LTK Engineering Svcs.	\$2,287	CM/Engineering Support Svcs.

Project Cost (\$s in thousands)

Phase	Lifetime Budget	Commitment to Date	Incurred to Date
Administration	\$ 2,238	\$ 1,015	\$ 1,034
Preliminary Engineering	\$ -	\$ -	\$ -
Final Design	\$ 279	\$ 226	\$ 226
Third Party Agreements	\$ 4,267	\$ 3,900	\$ 2,510
ROW Acquisition and Permits	\$ -	\$ -	\$ -
Construction	\$ 40,484	\$ 35,051	\$ 22,440
Construction Services	\$ 4,062	\$ 2,287	\$ 578
Contingency	\$ 1,725	\$ -	\$ -
Project Total	\$ 53,055	\$ 42,479	\$ 26,788

Key Project Activities

Current Period

- Continued on-board production installs.
- Submitted PTC test request to FRA.
- Completed wayside installation.
- Submitted Configuration Management Plan to FRA for review and comment.
- Began training of maintenance staff.

Next Period

- Complete on-board installation.
- Respond to FRA comments on CM plan.
- Continue training of maintenance staff.
- Conduct brake testing.

Closely Monitored Issues

- Availability of potential Grant funding.
- Coordination of Sound Transit work efforts with BNSF schedule for PTC implementation.
- Completion of project by federal compliance deadline of Dec. 2015.

Sounder Commuter Rail Mukilteo Station, South Platform

Scope

The Mukilteo Station South Platform project includes construction of a second platform, shelter structures, stairs, elevator towers, and a pedestrian bridge connecting the south platform with the existing north platform.



Artist's rendering of Mukilteo Station

Schedule

	Start	Finish
Prelim. Engineering	Feb 2001	Apr 2005
Final Design	Aug 2007	Sep 2012
Construction	Jan 2014	Sep 2015

Scope/Schedule/Budget Variance

None to report this period.

Project Cost (\$s in thousands)

Phase	Lifetime Budget	Commitment to Date	Incurred to Date
Administration	\$ 1,128	\$ 1,130	\$ 1,202
Preliminary Engineering	\$ -	\$ -	\$ -
Final Design	\$ 2,447	\$ 2,240	\$ 2,239
Third Party Agreements	\$ 131	\$ -	\$ -
ROW Acquisition and Permits	\$ 3,465	\$ 436	\$ 428
Construction	\$ 9,560	\$ 8,378	\$ 8,652
Construction Services	\$ 1,582	\$ 1,600	\$ 1,507
Project Total	\$ 18,313	\$ 13,784	\$ 14,028

Major Contracts (\$s in thousands)

Vendor	Amount	Scope
AECOM	\$2,154	FD
CA Carey Corp.	\$7,357	CON
KBA	\$1,600	CM Services

Key Project Activities

Current Period

- Installed barrier rail and cable rail.
- Installed HVAC.
- Adjusted elevator door opening controls and programming.
- Continued wiring.
- Continued commissioning activities.

Next Period

- Completion of commissioning activities.
- Substantial completion.
- Addressing punchlist items.

Closely Monitored Issues

- BNSF Flagging (Form B) requirements.
- Mukilteo lane closure activities.

Scope

The Tukwila Station includes permanent boarding platforms with canopies, improved pedestrian access, and commuter parking improvements, a bus transfer facility, and secure bicycle parking. The platform will be constructed south of Longacres Way and west of the BNSF railroad tracks.



Artist's rendering of Tukwila Station

Schedule

	Start	Finish
Prelim. Engineering	Jul 2007	Aug 2009
Final Design	Jan 2012	Sep 2012
Construction	Feb 2013	Jan 2015

Scope/Schedule/Budget Variance

None to report this period.

Major Contracts (\$\$ in thousands)

Vendor	Amount	Scope
KPFF	\$5,441	PE/ED/FD
Absher	\$16,880	CON
Lin & Associates	\$1,515	CM Services

Project Cost (\$\$ in thousands)

Phase	Lifetime Budget	Commitment to Date	Incurred to Date
Administration	\$ 2,773	\$ 1,646	\$ 1,651
Preliminary Engineering	\$ 1,101	\$ 1,101	\$ 1,101
Final Design	\$ 4,724	\$ 4,591	\$ 4,536
Third Party Agreements	\$ -	\$ -	\$ -
ROW Acquisition and Permits	\$ 11,009	\$ 10,412	\$ 10,357
Construction	\$ 24,281	\$ 18,532	\$ 17,461
Construction Services	\$ 2,081	\$ 1,614	\$ 1,577
Project Total	\$ 45,969	\$ 37,896	\$ 36,683

Key Project Activities

Current Period

- Continued work on Substantial completion punchlist.
- Completion of Commissioning and training.

Next Period

- Continue work on Substantial completion punchlist.

Closely Monitored Issues

- Coordination on platform closures between BNSF, ST, and Amtrak.

Sounder Commuter Rail Tacoma Trestle Track & Signal

Scope

Replacement of the single tracked Tacoma Trestle with a structure capable of accommodating double tracking to improve passenger and commuter rail service reliability and reduce delays for freight movement through Tacoma.



Project will replace existing Tacoma train trestle

Schedule

	Start	Finish
Prelim. Engineering	Aug 2013	Oct 2014
Final Design	Nov 2014	Jul 2015
Construction	Jan 2016	Dec 2017

Scope/Schedule/Budget Variance

None to report this period.

Project Cost (\$s in thousands)

Phase	Lifetime Budget	Commitment to Date	Incurred to Date
Administration	\$ 4,086	\$ 1,357	\$ 1,414
Preliminary Engineering	\$ 4,497	\$ 4,410	\$ 3,966
Final Design	\$ 13,481	\$ 8,365	\$ 4,663
Third Party Agreements	\$ 1,077	\$ -	\$ -
ROW Acquisition and Permits	\$ 10,061	\$ 5,135	\$ 4,865
Construction	\$ 81,641	\$ 322	\$ 322
Construction Services	\$ 5,666	\$ 660	\$ 95
Project Total	\$ 120,509	\$ 20,249	\$ 15,325

Major Contracts (\$s in thousands)

Vendor	Amount	Scope
David Evans & Associates	\$12,229	PE/ED/FD

Key Project Activities

Current Period

- Transmitted 90% design for ST's review and comments.
- Approved project baseline scope, cost, and schedule.
- Continued work on real estate appraisals and offers.
- Continued technical coordination with private utility companies to address the utility conflicts on the project site.

Next Period

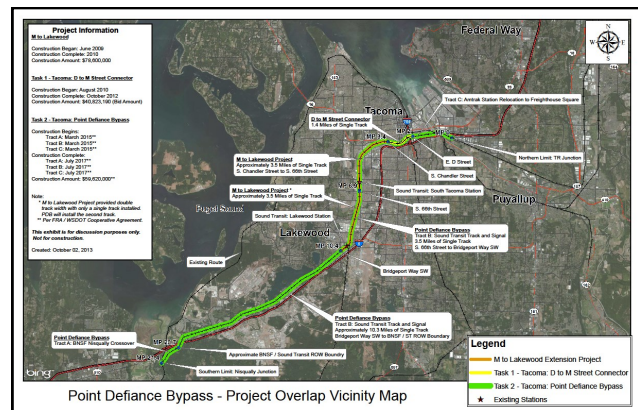
- Attend the City of Tacoma Hearing Examiner's hearing for the public street alley vacation.
- Schedule 100% design submittal.

Closely Monitored Issues

- Coordination with WSDOT on the design integration of the platform extension to the Trestle design package and signal design integration of the ST Tacoma Trestle Project and WSDOT Point Defiance By-Pass Project.
- Coordination with the Federal Railroad Administration on evaluating the options of relocating crossover off of the double-track bridge.

Scope

Track & Signal along the Lakeview subdivision is being improved between 66th Street in Tacoma and Nisqually Junction. Improvements include upgrades to track and signal systems, grade crossings, bridge replacement and rehabilitation.



Point Defiance Bypass Route

Schedule

	Start	Finish
Prelim. Engineering	N/A	N/A
Final Design	N/A	N/A
Construction	Aug 2015	Mar 2017

Scope/Schedule/Budget Variance

None to report this period.

Major Contracts (\$s in thousands)

Vendor	Amount	Scope
HNTB	\$1,180	CM Services

Project Cost (\$s in thousands)

Phase	Lifetime Budget	Commitment to Date	Incurred to Date
Administration	\$ 2,700	\$ 618	\$ 608
Preliminary Engineering	\$ -	\$ -	\$ -
Final Design	\$ 200	\$ 126	\$ 98
Third Party Agreements	\$ -	\$ -	\$ -
ROW Acquisition and Permits	\$ 1,000	\$ 47	\$ 47
Construction	\$ 114,500	\$ 3	\$ -
Construction Services	\$ 9,600	\$ 1,191	\$ 135
Project Total	\$ 128,000	\$ 1,985	\$ 888

Key Project Activities

Current Period

- On-going coordination with project stakeholders, effected jurisdictions and fiber optic utility owners.
- Advertised project for construction.
- Responded to RFIs and issued addenda.

Next Period

- Award contract for construction and issue Notice to Proceed.
- On-going coordination with project stakeholders, effected jurisdictions and fiber optic utility owners.
- Begin early coordination with WSDOT and WUTC Operation Life Saver.

Closely Monitored Issues

- Project designed by the Washington State Department of Transportation is funded through an ARRA grant made available by the FRA. Work for this project must be completed by March 2017 in order to leverage all available funding.

Sounder Commuter Rail Puyallup Station Improvements

Scope

This project is currently undertaking a NEPA/SEPA environmental review and preliminary engineering for access improvements identified for the Puyallup Station. ST Board identified improvements include a new parking garage at the Puyallup Station, additional parking facilities, station area pedestrian access improvements, bicycle lane or path improvements near the station, secure bicycle storage area traffic improvements.

The project scope for Final Design will be determined with the concurrence of community and municipal stakeholders, following completion of conceptual and preliminary engineering.



Improving access to Puyallup Station

Schedule

	Start	Finish
Prelim. Engineering	Jun 2013	2016
Final Design	2016	2017
Construction	2019	2020

Scope/Schedule/Budget Variance

None to report this period.

Project Cost (\$s in thousands)

Phase	Lifetime Budget	Commitment to Date	Incurred to Date
Administration	\$ 757	\$ 236	\$ 242
Preliminary Engineering	\$ 2,680	\$ 2,256	\$ 1,057
Final Design	\$ -	\$ -	\$ -
Third Party Agreements	\$ -	\$ -	\$ -
ROW Acquisition and Permits	\$ 110	\$ 15	\$ 12
Construction	\$ -	\$ -	\$ -
Construction Services	\$ -	\$ -	\$ -
Project Total	\$ 3,547	\$ 2,507	\$ 1,311

Major Contracts (\$s in thousands)

Vendor	Amount	Scope
Parametrix	\$4,512	CE/PE

Key Project Activities

Current Period

- Environmental review is underway.

Next Period

- Continue environmental review.

Closely Monitored Issues

- None identified at this time.

Scope

This project is currently undertaking a NEPA/SEPA environmental review and preliminary engineering for access improvements identified for the Sumner Station. ST Board identified improvements include a new parking garage at the Sumner Station, station area pedestrian access improvements, secure bicycle storage at the station and station area traffic improvements.

The project scope for Final Design will be determined with the concurrence of community and municipal stakeholders, following completion of conceptual and preliminary engineering.



Improving access to Sumner Station

Schedule

	Start	Finish
Prelim. Engineering	Apr 2013	2016
Final Design	2016	2017
Construction	2019	2020

Scope/Schedule/Budget Variance

None to report this period.

Project Cost (\$s in thousands)

Phase	Lifetime Budget	Commitment to Date	Incurred to Date
Administration	\$ 762	\$ 241	\$ 248
Preliminary Engineering	\$ 2,685	\$ 2,260	\$ 1,061
Final Design	\$ -	\$ -	\$ -
Third Party Agreements	\$ -	\$ -	\$ -
ROW Acquisition and Permits	\$ 2,912	\$ 2,692	\$ 2,692
Construction	\$ 113	\$ 97	\$ 83
Construction Services	\$ -	\$ -	\$ -
Project Total	\$ 6,472	\$ 5,290	\$ 4,084

Major Contracts (\$s in thousands)

Vendor	Amount	Scope
Parametrix	\$4,512	CE/PE

Key Project Activities

Current Period

- Environmental review is underway.

Next Period

- Continue environmental review.

Closely Monitored Issues

- None identified at this time.