

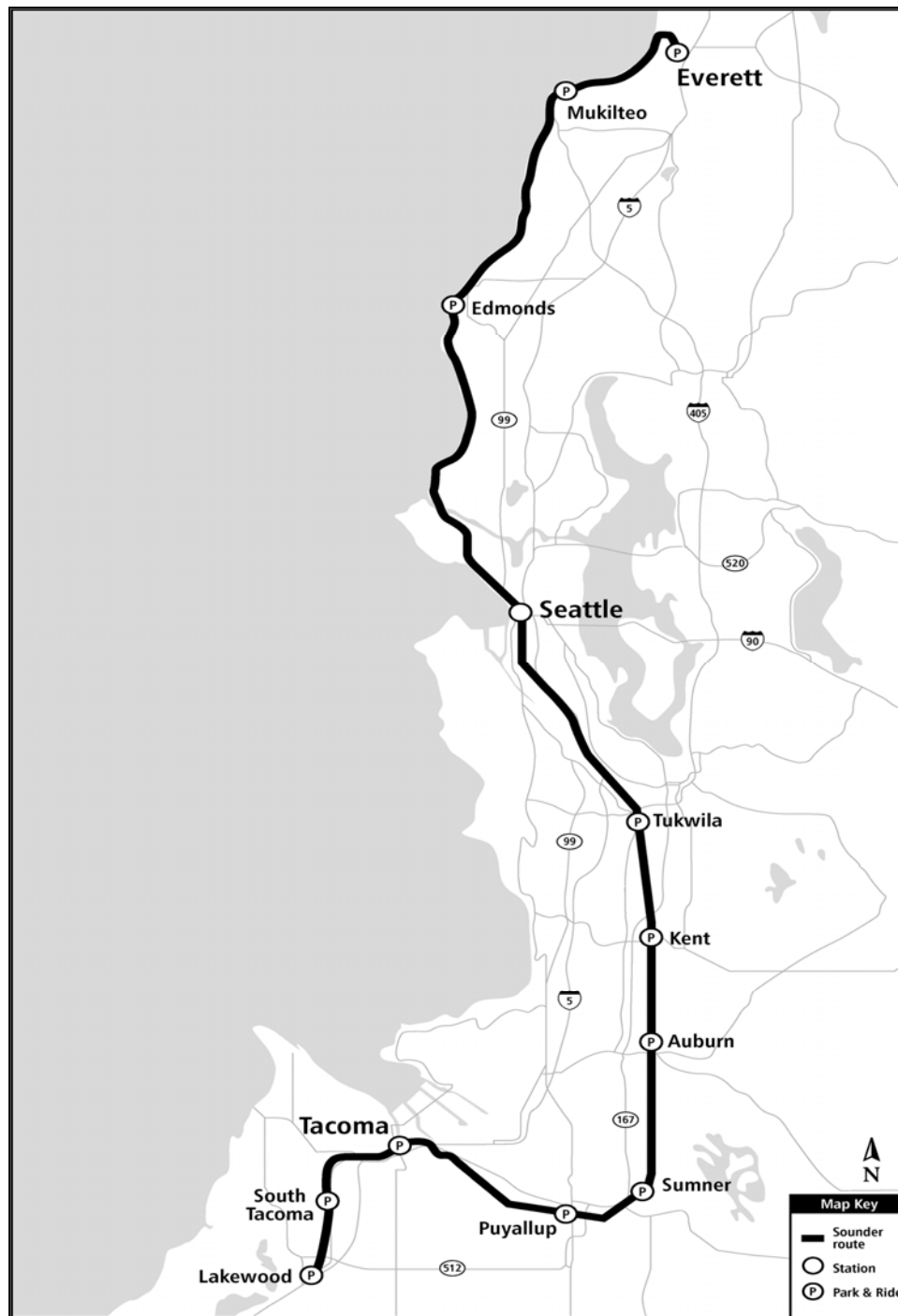
# Progress Report Sounder Program



Sound Transit breaks ground on Tacoma Trestle Track & Signal Project which is to replace Tacoma Rail's single-track wooden trestle bridge with a new double-track bridge

June | 2016





*Sounder provides commuter rail service between Everett and Lakewood*

## Projects

**Auburn Station Improvements:** Project includes alternatives identification, screening, environmental documentation, design and construction of packages of station access improvements at or around Auburn Station. The purpose of the project is to improve access to the existing Sounder Auburn Station for pedestrians, bicyclists, bus riders, and drivers.

**Kent Station Improvements:** Project includes alternatives identification, screening, environmental documentation, design and construction of packages of station access improvements at or around Kent Station. The purpose of the project is to improve access to the existing Sounder Kent Station for pedestrians, bicyclists, bus riders, and drivers.

**Mukilteo Station, South Platform:** Full build-out of this station included construction of a second platform, overhead pedestrian bridge, elevators, stair tower, and passenger shelters. Sounder service at the south platform began on April 11, 2016.

**Point Defiance Bypass:** Sound Transit is administering the construction of the Point Defiance Bypass Track & Signal contract which will construct a new second track adjacent to Sound Transit's existing main line between South Tacoma (66th Street Bridge) and Lakewood (Bridgeport Way) and install new rails, ties, and ballast on Sound Transit's existing track between Lakewood and Nisqually with associated signal and PTC safety systems. The work is being funded by an FRA-administered grant to WSDOT for improvements along the Pacific Northwest High Speed Intercity Passenger Rail corridor.

**Positive Train Control:** Federal regulations require all passenger train systems be equipped with PTC systems. This necessitates upgrades to Sounder wayside signals, communications, and information management systems along with additional on-board equipment. BNSF is installing wayside elements within the Everett-to-Tacoma corridor. This project includes wayside elements along the Tacoma-to-Lakewood corridor and modifications of locomotives and cab cars for installation of on-board equipment. Congress acted to extend the deadline for implementing PTC to December 2018. Sound Transit will implement PTC operations as early as FRA approvals of its Revenue Service Demonstration and PTC Safety Plans will allow.

**Puyallup Station Improvements:** Project includes environmental documentation, design, and construction of packages of station access improvements at or around Puyallup Station. The purpose of this project is to accommodate and encourage future demand for ridership in economically efficient and sustainable manner.

**Sounder Maintenance Base:** Sound Transit plans to build an operations and maintenance facility to service Sounder commuter trains. Sound Transit will construct a new, approximately 40,000 square-foot railroad maintenance facility at its expanded Century Yard facility in the City of Lakewood. The building will contain maintenance bays, materials storage areas, offices and facilities for employees.

**Sounder South Expanded Service:** Sound Transit has purchased four additional round trip easements from BNSF to expand service between Seattle and Tacoma/Lakewood. Sound Transit is responsible for completing environmental documentation, permitting, and mitigation associated with BNSF construction activities necessary to support those additional round trips. One of the four additional round trips has commenced, timing of the other three is dependent on completing environmental work and ridership demand.

**Projects** continued...

**Sounder Yard Expansion:** Increased Sounder service in the Everett-to-Lakewood corridor will require additional train sets and a location to store the added trains overnight. The Century Yard is being expanded by an additional storage track to accommodate the new train sets and permanent crew reporting facilities will be incorporated into the design, eliminating the need to lease space for train and engine crews.

**Sumner Station Improvements:** Project includes environmental documentation, design, and construction of packages of station access improvements at or around Sumner Station. The purpose of this project is to accommodate and encourage future demands for ridership in an economically efficient and sustainable manner.

**Tukwila Station:** Construction of a permanent station and platforms to replace the temporary wooden structure has been completed. This project included the construction of an expanded parking lot, bus loop with passenger shelters, bicycle storage area, and new concrete platforms with improved passenger shelters, all sited to accommodate BNSF's new third mainline, now under construction.

**Tacoma Trestle Track & Signal:** Replacement of existing wooden trestle that is reaching the end of the functional service life with a double track concrete structure. This project will improve overall safety, capacity, and speed in this section of the Sounder corridor.

## Program Cost Summary

The Program Cost Summary information by project is summarized below. The Adopted Budget reflects the budget for each project through the approved project phase, meaning that for projects approved for Final Design activities only, the project budget will be amended at some point to add budget for construction activities. Further information can be found in the following project pages.

SOUNDER	Adopted Budget	Commitment to Date	Incurred to Date	Forecast to Complete	Estimated Final Cost (EFC)	Adopted Budget vs. EFC
SOUNDER MAINTENANCE BASE	\$ 6.8	\$ 2.7	\$ 2.1	\$ 4.2	\$ 6.8	\$ -
POSITIVE TRAIN CONTROL	\$ 53.1	\$ 43.6	\$ 37.1	\$ 9.4	\$ 53.1	\$ -
PUYALLUP STATION IMPROVEMENTS	\$ 8.4	\$ 3.0	\$ 1.9	\$ 5.4	\$ 8.4	\$ -
SUMNER STATION IMPROVEMENTS	\$ 6.5	\$ 5.6	\$ 4.9	\$ 0.9	\$ 6.5	\$ -
TACOMA TRESTLE TRACK & SIGNAL	\$ 120.5	\$ 89.6	\$ 30.8	\$ 30.9	\$ 120.5	\$ -
SOUNDER YARD EXPANSION	\$ 20.6	\$ 16.2	\$ 4.2	\$ 4.3	\$ 20.6	\$ -
PT DEFIANCE BYPASS	\$ 128.0	\$ 67.4	\$ 38.5	\$ 60.6	\$ 128.0	\$ -
KENT STATION ACCESS IMPRVMTS	\$ 0.8	\$ 0.0	\$ 0.0	\$ 0.8	\$ 0.8	\$ -
AUBURN STATION ACCESS IMPRVMT	\$ 0.8	\$ 0.0	\$ 0.0	\$ 0.8	\$ 0.8	\$ -
MUKILTEO STATION-S PLATFORM	\$ 18.3	\$ 14.4	\$ 14.8	\$ 4.0	\$ 18.3	\$ -
TUKWILA STATION	\$ 46.0	\$ 37.1	\$ 37.0	\$ 3.6	\$ 40.7	\$ 5.3
SOUNDER SOUTH EXPANDED SERVICE	\$ 202.0	\$ 194.4	\$ 194.2	\$ 7.5	\$ 202.0	\$ -
<b>TOTAL</b>	<b>\$ 611.8</b>	<b>\$ 473.9</b>	<b>\$ 365.7</b>	<b>\$ 132.5</b>	<b>\$ 606.4</b>	<b>\$ 5.3</b>

Table figures in millions

## Sounder Program Schedule

Schedule for active projects are summarized below. Further information can be found in the following project pages.

Activity Name	Start	Finish	2016	2017	2018	2019	2020	2021	2022	2023	2024
<b>Sounder Projects</b>	01-Apr-13 A	31-Dec-23									
Everett-to-Seattle Commuter Rail	29-May-13 A	11-Apr-16 A									
\$31206 Mukilteo Sta S Platform	29-May-13 A	11-Apr-16 A									
Tacoma-to-Seattle Commuter Rail	13-May-13 A	31-Oct-14 A									
\$33236 Tukwila Station	13-May-13 A	31-Oct-14 A									
Lakewood-to-Tacoma Commuter Rail	01-Apr-13 A	31-Dec-23									
\$300026 - Sounder Yard Expansion	23-Feb-16	20-Apr-17									
\$300011 - Positive Train Control	16-Jul-13 A	03-Oct-18									
\$300021 - Tacoma Trestle	21-Mar-16	26-Sep-17									
\$34150 - Point Defiance Bypass	22-Sep-15 A	27-Mar-17									
\$300004 - Sounder Yard and Shop	01-Apr-13 A	31-Dec-23									
\$300017 - Puyallup/Sumner Station Access Improvements	01-May-15 A	21-Feb-21									
\$300017 - Puyallup Station Access and Expansion	01-May-15 A	21-Feb-21									
\$300018 - Sumner Station Access and Expansion	01-May-15 A	26-Jan-21									

## Construction Safety

Agency-led active construction contracts under the Sounder program are as follows:

- Point Defiance Bypass Project
- Tacoma Trestle Track & Signal Project
- Sounder Yard Expansion

An injury to a track worker was reported by Stacy & Witbeck, the Point Defiance Bypass Project's contractor.



## Third-Party Agreements

### WSDOT / Amtrak / FRA

- Negotiations have concluded for a Service Outcomes Agreement (SOA) and Stakeholder Agreement for investment of High-Speed Passenger Rail grant money into the Sound Transit rail corridor. The SOA captures Sound Transit's commitment to continued maintenance and operation of the corridor, and the Stakeholder Agreement provides funding to be applied to the completed construction on the D Street-to-M Street project and the on-going Point Defiance Bypass project.

### City of Tacoma

- Sound Transit has completed the transfer to the City of Tacoma of surplus properties acquired for the D Street-to-M Street project not needed for Sounder operations. The transfer occurred as part of the purchase and sale agreement for the Reservation Connector rail right-of-way.
- Work Order Agreement - City of Tacoma to conduct design review services and construction inspection services for the Tacoma Trestle & Signal project. City has planned, reviewed, and commented on ST's 60%, 90%, and 100% IFB design submittals.

### FTA / WA. Dept. of Archeology and Historical Preservation

- Environmental MOA - Federal Transit Administration (FTA), the responsible Federal agency is providing federal financial assistance for the Tacoma Trestle Track & Signal project. The grant administrator has determined that the project is an undertaking as defined in Title 36 Code of Federal Regulation (CFR) §800.16(y), and thus is subject to review under the Section 106 of the National Historic Preservation Act (NHPA), 16 U.S.C §470 (Section 106) and its implementing regulations, 36 CFR Part 800.

### WSDOT

- Construction and Maintenance - Funding of projects on Sound Transit-owned property, including a \$21M contribution to the D-to-M Street Track & Signal project, and 100% funding of the Pt. Defiance Bypass project. For Tacoma Trestle, WSDOT will provide funding for Sound Transit to construct and maintain the platform extension serving Amtrak long-distance trains and other railroad and passenger improvements at Tacoma Dome Station/Freighthouse Square.
- CE and PE Cost Reimbursement - WSDOT wishes to extend the passenger platform at Freighthouse Square onto the bridge in order to accommodate the length of Amtrak trains that will use the station.
- Final Design Cost Reimbursement - WSDOT is to reimburse Sound Transit for the associated design consultant services and other expenditures to complete final design of the extended platform, necessary to accommodate the longer Amtrak trains at their Freighthouse Square Station.

### Sprint

- Cost Reimbursement - Sound Transit and Sprint have reached an agreement for Sprint to temporarily relocate their facilities, then permanently relocate their facilities back onto ST's new bridge. The agreement covers expenditures for design and construction activities related to the temporary relocation. A subsequent agreement will be developed for the design work and construction for the permanent relocation of their facilities.

## Quality Assurance

Quality Assurance continues to support the Sounder program through review of design and construction documents and periodic audits of projects in design, construction, and operation.

Description	2 <sup>nd</sup> Quarter 2016	Notes
Audits/Surveillances Performed	0 Audits 0 Surveillances	None
Audits/Surveillances Reports Issued	0 Audit 0 Surveillances	None
Reports in Progress	0 Reports	None

## Sound Transit Board Actions

Board motions and resolutions directly related to Sounder Program approved this period are summarized in the table.

Motion Number	Description	Date
M2016-43	Amend Contract with David Evans & Associates for Final Design for the Tacoma Trestle Track & Signals Project	04/25/16
M2016-50	Amended and Restated Construction and Maintenance Agreement with WSDOT	6/23/16
Resolution Number	Description	Date
R2016-07	Selecting the Puyallup Station Access Project Improvements	4/25/16
R2016-08	Budget Amendment for Auburn Station Access Improvements Project	4/28/16
R2016-09	Budget Amendment for Kent Station Access Improvements Project	4/28/16
R2016-12	Select the Souder Yard & Shops Facility Project to be Built and renames the working project name to Sounder Maintenance Base	5/26/16
R2016-13	Selecting the Sumner Station Improvements Project	5/26/16

**This page intentionally left blank.**



# Sounder Commuter Rail Auburn Station Improvements

## Scope

The project will consider and build upon the results of the Sounder Station Access and Demand Study completed in 2012. The alternatives analysis phase of the project will evaluate parking, transit, pedestrian, and bicycle access improvements that could be made to improve rider access to Auburn Station.

At the end of the alternatives analysis phase, the ST Board will select an alternative to advance to conceptual and preliminary engineering



Improving access to Auburn Station

## Schedule

	Start	Finish
Prelim. Engineering	2016	2018
Final Design	2019	2021
Construction	2021	2023

## Scope/Schedule/Budget Variance

None to report this period.

## Project Cost (\$ in thousands)

Phase	Lifetime Budget	Commitment to Date	Incurred to Date
Administration	\$ 207	\$ 3	\$ 4
Preliminary Engineering	\$ 574	\$ -	\$ -
Final Design	\$ -	\$ -	\$ -
Third Party Agreements	\$ -	\$ -	\$ -
ROW Acquisition and Permits	\$ 50	\$ -	\$ -
Construction	\$ -	\$ -	\$ -
Construction Services	\$ -	\$ -	\$ -
<b>Project Total</b>	<b>\$ 831</b>	<b>\$ 3</b>	<b>\$ 4</b>

## Major Contracts (\$ in thousands)

Vendor	Amount	Scope
TBD		

## Key Project Activities

### Current Period

- Approved Phase Gate I establishing the project budget for alternative analysis.
- Advertised for procurement of consultant services contract for alternative analysis.

### Next Period

- Award consultant services contract for alternative analysis.

## Closely Monitored Issues

- None identified at this time.

## Scope

The project will consider and build upon the results of the Sounder Station Access and Demand Study completed in 2012. The alternatives analysis phase of the project will evaluate parking, transit, pedestrian, and bicycle access improvements that could be made to improve rider access to Kent Station.

At the end of the alternatives analysis phase, the ST Board will select an alternative to advance to conceptual and preliminary engineering.



*Improving access to Kent Station*

## Schedule

	Start	Finish
Prelim. Engineering	2016	2018
Final Design	2019	2021
Construction	2021	2023

## Scope/Schedule/Budget Variance

None to report this period.

## Major Contracts (\$\$ in thousands)

Vendor	Amount	Scope
TBD		

## Project Cost (\$\$ in thousands)

Phase	Lifetime Budget	Commitment to Date	Incurred to Date
Administration	\$ 207	\$ 4	\$ 6
Preliminary Engineering	\$ 574	\$ -	\$ -
Final Design	\$ -	\$ -	\$ -
Third Party Agreements	\$ -	\$ -	\$ -
ROW Acquisition and Permits	\$ 50	\$ -	\$ -
Construction	\$ -	\$ -	\$ -
Construction Services	\$ -	\$ -	\$ -
<b>Project Total</b>	<b>\$ 831</b>	<b>\$ 4</b>	<b>\$ 6</b>

## Key Project Activities

### Current Period

- Approved Phase Gate 1 establishing the project budget for alternative analysis.
- Advertised for procurement of consultant services for alternatives analysis.

### Next Period

- Award consultant services contract for alternatives analysis.

## Closely Monitored Issues

- None identified at this time.

# Sounder Commuter Rail Mukilteo Station, South Platform

## Scope

The Mukilteo Station South Platform project includes construction of a second platform, shelter structures, stairs, elevator towers, and a pedestrian bridge connecting the south platform with the existing north platform. Sounder service began using the south platform in April 2016.



Mukilteo Station

## Schedule

	Start	Finish
Prelim. Engineering	Feb 2001	Apr 2005
Final Design	Aug 2007	Sep 2012
Construction	Jan 2014	Feb 2016

## Scope/Schedule/Budget Variance

None to report this period.

## Project Cost (\$s in thousands)

Phase	Lifetime Budget	Commitment to Date	Incurred to Date
Administration	\$ 1,540	\$ 1,330	\$ 1,338
Preliminary Engineering	\$ -	\$ -	\$ -
Final Design	\$ 2,647	\$ 2,240	\$ 2,240
Third Party Agreements	\$ 35	\$ 35	\$ -
ROW Acquisition and Permits	\$ 1,778	\$ 486	\$ 478
Construction	\$ 10,363	\$ 8,547	\$ 9,058
Construction Services	\$ 1,950	\$ -	\$ -
<b>Project Total</b>	<b>\$ 18,313</b>	<b>\$ 12,638</b>	<b>\$ 13,114</b>

## Major Contracts (\$s in thousands)

Vendor	Amount	Scope
AECOM	\$2,154	FD
CA Carey Corp.	\$7,548	CON
KBA	\$1,650	CM Services

## Key Project Activities

### Current Period

- Continued additional re-work from L&I inspection.
- Opened South Platform for service.
- Completed punchlist corrections.

### Next Period

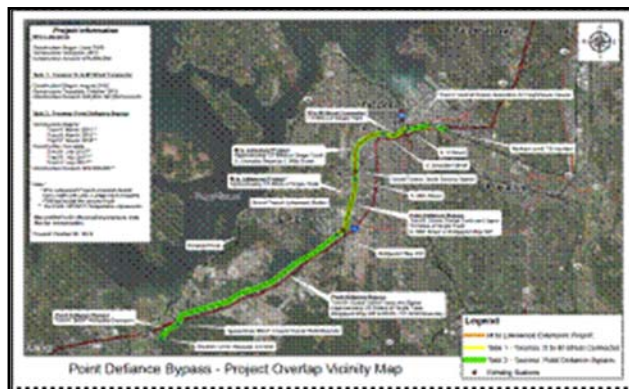
- Follow-on work to ready South Platform for Phase Gate 7 and Transition to Operations.

## Closely Monitored Issues

- None identified at this time.

## Scope

Sound Transit is administering the construction of WSDOT Point Defiance Bypass Project which will construct a new second track adjacent to Sound Transit's existing main line between South Tacoma (South 66th St. Bridge) and Lakewood (Bridgeport Way) and install new rails, ties, ballast and signaling and PTC systems on Sound Transit's existing track between Lakewood and Nisqually.



Point Defiance Bypass—Project Overlay Vicinity Map

## Schedule

	Start	Finish
Prelim. Engineering	N/A	N/A
Final Design	N/A	N/A
Construction	Aug 2015	Mar 2017

## Scope/Schedule/Budget Variance

None to report this period.

## Major Contracts (\$s in thousands)

Vendor	Amount	Scope
HNTB	\$923	CMC
Stacy and Witbeck, Inc.	\$53,824	CON
Voestalpine Nortrak, Inc.	\$1,306	Track Procurement

## Project Cost (\$s in thousands)

Phase	Lifetime Budget	Commitment to Date	Incurred to Date
Administration	\$ 2,860	\$ 1,498	\$ 1,545
Preliminary Engineering	\$ -	\$ -	\$ -
Final Design	\$ 200	\$ 103	\$ 103
Third Party Agreements	\$ -	\$ -	\$ -
ROW Acquisition and Permits	\$ 1,000	\$ 54	\$ 50
Construction	\$ 114,340	\$ 56,842	\$ 34,101
Construction Services	\$ 9,600	\$ 8,874	\$ 2,746
<b>Project Total</b>	<b>\$ 128,000</b>	<b>\$ 67,371</b>	<b>\$ 38,545</b>

## Key Project Activities

### Current Period

- Continued to build single-track to Nisqually.
- Began final grade and alignment of single-track.
- Continued with bridge repair work at I-5 and Pendleton Avenue.
- Continued with fiber optic backbone installation.
- Began construction of double-track Bridgeport to S.66th.

### Next Period

- Continue track work and bridge work.
- Continue to build, wire, and test signal bungalows.
- Install signal conduit.
- Begin installation of permanent fencing.
- Begin installation of signal foundations.

## Closely Monitored Issues

- Project designed by the Washington State Department of Transportation is funded through an ARRA grant made available by the FRA. Work for this project must be completed in March 2017 in order to leverage all available funding.
- Third-party fiber optic relocation work is on-going and requires coordination between contractors.

## Scope

Positive Train Control (PTC) systems are integrated command, control, communications, and information systems for controlling train movements. The systems improve railroad safety by significantly reducing the probability of collisions between trains, casualties to railway workers, and over-speed accidents.

Congress acted to extend the deadline for implementing PTC to December 2018.



Improving safety along the Tacoma-to-Lakewood corridor

## Schedule

	Start	Finish
Prelim. Engineering	N/A	N/A
Final Design	Jul 2013	May 2014
Construction	Jun 2014	Sep 2016

## Scope/Schedule/Budget Variance

Anticipated project completion date is pushed to 3Q 2016 or later. Completion is dependent on FRA's approval of PTC Safety Plan and BNSF ability to test PTC systems in the Tacoma to Seattle corridor.

## Major Contracts (\$s in thousands)

Vendor	Amount	Scope
Xorail, Inc.	\$34,674	Design/System install
LTK Eng. Svcs.	\$2,287	CM/Eng. Services

## Project Cost (\$s in thousands)

Phase	Lifetime Budget	Commitment to Date	Incurred to Date
Administration	\$ 2,238	\$ 1,310	\$ 1,319
Preliminary Engineering	\$ -	\$ -	\$ -
Final Design	\$ 279	\$ 226	\$ 226
Third Party Agreements	\$ 4,267	\$ 3,900	\$ 2,510
ROW Acquisition and Permits	\$ -	\$ -	\$ -
Construction	\$ 38,994	\$ 35,532	\$ 32,305
Construction Services	\$ 5,552	\$ 2,637	\$ 752
Contingency	\$ 1,724	\$ -	\$ -
<b>Project Total</b>	<b>\$ 53,054</b>	<b>\$ 43,605</b>	<b>\$ 37,112</b>

## Key Project Activities

### Current Period

- On-going work to complete testing of PTC systems.
- Continued work on installation punch list items.
- Continued work on integration activities with BNSF.
- Completed review of 90% PTC Safety Plan.

### Next Period

- Continue work on punch list items.
- Continue work on developing PTC Safety Plan.
- Agree to scope of PTC testing with Tacoma Rail.
- Issue a partial Stop Work order on Xo-rail contract for activity that involves integration with the BNSF PTC system.

## Closely Monitored Issues

- FRA review and approval of documents.
- BNSF will likely not activate their PTC system on the Seattle and Lakewood sub-divisions until Spring/Summer 2017. Therefore, Sound Transit's system integration activities to be performed by ST's contractor, Xo-rail will be on hold until that time.



## Scope

This project is currently undertaking a NEPA/SEPA environmental review and preliminary engineering for access improvements identified through the Access and Demand Study. ST Board identified improvements include a new parking garage at the Puyallup Station, additional parking facilities, station area pedestrian access improvements, bicycle lane or path improvements near the station, secure bicycle storage, and station area traffic improvements.

The project scope for Final Design will be determined with the concurrence of community and municipal stakeholders, following completion of conceptual and preliminary engineering.



*Improving access to Puyallup Station*

## Schedule

	Start	Finish
Prelim. Engineering	Jun 2013	2017
Final Design	2017	2018
Construction	2019	2020

## Scope/Schedule/Budget Variance

None to report this period.

## Major Contracts (\$s in thousands)

Vendor	Amount	Scope
Parametrix	\$4,512	CE/PE

## Project Cost (\$s in thousands)

Phase	Lifetime Budget	Commitment to Date	Incurred to Date
Administration	\$ 757	\$ 451	\$ 459
Preliminary Engineering	\$ 2,680	\$ 2,336	\$ 1,459
Final Design	\$ -	\$ -	\$ -
Third Party Agreements	\$ -	\$ -	\$ -
ROW Acquisition and Permits	\$ 4,977	\$ 206	\$ 22
Construction	\$ -	\$ -	\$ -
Construction Services	\$ -	\$ -	\$ -
<b>Project Total</b>	<b>\$ 8,414</b>	<b>\$ 2,993</b>	<b>\$ 1,940</b>

## Key Project Activities

### Current Period

- Selected project elements to be built.
- Authorized the acquisition of real property interests.

### Next Period

- Begin development of procurement documents for design-build project delivery.
- Begin acquisition of ROW.

## Closely Monitored Issues

- None identified at this time.

# Sounder Commuter Rail Sounder Maintenance Base



## Scope

Sound Transit plans to build an operations and maintenance facility to service Sounder commuter trains. The single-story building will contain maintenance bays, material storage areas, offices and facilities for employees. Supporting improvements, such as roadway, site lightning, drainage facilities, and required utility infrastructure are included in the project.



Amtrak currently provides Sounder vehicle maintenance

## Schedule

	Start	Finish
Prelim. Engineering	2016	TBD
Final Design	TBD	TBD
Construction	TBD	TBD

## Scope/Schedule/Budget Variance

None to report this period.

## Project Cost (\$s in thousands)

Phase	Lifetime Budget	Commitment to Date	Incurred to Date
Administration	\$ 860	\$ 445	\$ 449
Preliminary Engineering	\$ 5,116	\$ 2,149	\$ 1,631
Final Design	\$ -	\$ -	\$ -
Third Party Agreements	\$ -	\$ -	\$ -
ROW Acquisition and Permits	\$ 865	\$ 78	\$ 43
Construction	\$ -	\$ -	\$ -
Construction Services	\$ -	\$ -	\$ -
<b>Project Total</b>	<b>\$ 6,841</b>	<b>\$ 2,672</b>	<b>\$ 2,123</b>

## Major Contracts (\$s in thousands)

Vendor	Amount	Scope
Parsons Brinckerhoff	\$2,300	PE/ED

## Key Project Activities

### Current Period

- Provided project overview update to Lakewood City Council.
- Received approval from ST Board for project to be built.

### Next Period

- Issue appraisal on key private parcels.
- Begin consultant's scope of work on the next design phase for the project.

## Closely Monitored Issues

- Moderate noise and traffic impacts documented in the environmental analysis have been the subject of comments from the City of Lakewood.



## Scope

Purchase of four additional commuter rail easements from BNSF for expanding service between Seattle and Lakewood. A number of track and signal improvements that are needed between Seattle and Tacoma to accommodate additional service will be funded by the project.

BNSF is currently completing design of the improvements and intends to incrementally complete construction as additional service is added. Additional round trips are planned for 2016 and 2017.



Additional morning and evening service between Seattle and Lakewood

## Schedule

	Start	Finish
Prelim. Engineering	Oct 2010	Mar 2012
Final Design	Aug 2011	Apr 2018
Construction	Sep 2015	Apr 2018

## Scope/Schedule/Budget Variance

None to report this period.

## Major Contracts (\$s in thousands)

Vendor	Amount	Scope
ESA Adolfson	\$416	PE

## Project Cost (\$s in thousands)

Phase	Lifetime Budget	Commitment to Date	Incurred to Date
Administration	\$ 2,250	\$ 1,115	\$ 1,121
Preliminary Engineering	\$ 707	\$ 475	\$ 479
Final Design	\$ 700	\$ 184	\$ 32
Third Party Agreements	\$ 300	\$ -	\$ -
ROW Acquisition and Permits	\$ 186,485	\$ 185,211	\$ 185,190
Construction	\$ 11,226	\$ 7,439	\$ 7,414
Construction Services	\$ 300	\$ -	\$ -
<b>Project Total</b>	<b>\$ 201,968</b>	<b>\$ 194,424</b>	<b>\$ 194,236</b>

## Key Project Activities

### Current Period

- Continued construction for the Easement 3 corridor between Tukwila and Kent.
- Began drafting terms for the 55th Ave. Fish Passage Culvert Cost Reimbursement Agreement with King County for participation in design reviews.
- Began feasibility study for a proposed culvert replacement project on King County right-of-way.

### Next Period

- Execute the 55th Ave. Fish Passage Culvert Cost Reimbursement Agreement with King County.
- Review the first draft of the culvert project feasibility study.
- BNSF Railway continues construction activities for Easement 3 between Tukwila and Kent and Easement 4 between Kent and Auburn.

## Closely Monitored Issues

- Implementation of the fish passage culvert mitigation project. Mitigation project must be constructed by April 2018.

# Sounder Commuter Rail Sounder Yard Expansion



## Scope

The Sounder Yard Expansion project includes design and construction of a third storage track and civil improvements to accommodate seven Sounder train sets at the Sounder layover facility, Century Yard in Lakewood.

This additional storage capacity is necessary when additional Sounder South trains, approved in ST2, begin service between Tacoma and Seattle in 2016 in advance of completion of the Sounder Maintenance Base project.



Sounder Yard Expansion will increase storage capacity for Sounder 7th train set

## Schedule

	Start	Finish
Prelim. Engineering	Jul 2013	Jun 2014
Final Design	Jun 2014	Sep 2015
Construction	Jul 2016	Jun 2017

## Scope/Schedule/Budget Variance

None to report this period.

## Project Cost (\$s in thousands)

Phase	Lifetime Budget	Commitment to Date	Incurred to Date
Administration	\$ 1,200	\$ 635	\$ 643
Preliminary Engineering	\$ 2,150	\$ 1,779	\$ 1,208
Final Design	\$ -	\$ -	\$ -
Third Party Agreements	\$ -	\$ -	\$ -
ROW Acquisition and Permits	\$ 400	\$ 245	\$ 197
Construction	\$ 15,400	\$ 12,406	\$ 2,006
Construction Services	\$ 1,400	\$ 1,182	\$ 135
<b>Project Total</b>	<b>\$ 20,550</b>	<b>\$ 16,247</b>	<b>\$ 4,189</b>

## Major Contracts (\$s in thousands)

Vendor	Amount	Scope
Parsons Brinkerhoff	\$1,694	PE/DB
HNTB	\$1,182	CMC
Shimmick Construction	\$12,005	D/CON

## Key Project Activities

### Current Period

- Continued design development including design review and collaboration.
- Continued with permit application and submittals.

### Next Period

- Begin Construction.

## Closely Monitored Issues

- None identified at this time.

## Scope

This project is currently undertaking NEPA/SEPA environmental review and preliminary engineering for access improvements identified through the Access and Demand Study. ST Board identified improvements include a new parking garage at the Sumner Station, station area pedestrian access improvements, secure bicycle storage at the station and station area traffic improvements.

The project scope for Final Design will be determined with the concurrence of community and municipal stakeholders, following completion of conceptual and preliminary engineering.



*Improving access to Sumner Station*

## Schedule

	Start	Finish
Prelim. Engineering	Apr 2013	2017
Final Design	2017	2018
Construction	2018	2020

## Scope/Schedule/Budget Variance

None to report this period.

## Project Cost (\$s in thousands)

Phase	Lifetime Budget	Commitment to Date	Incurred to Date
Administration	\$ 762	\$ 451	\$ 456
Preliminary Engineering	\$ 2,685	\$ 2,340	\$ 1,626
Final Design	\$ -	\$ -	\$ -
Third Party Agreements	\$ -	\$ -	\$ -
ROW Acquisition and Permits	\$ 2,912	\$ 2,720	\$ 2,703
Construction	\$ 113	\$ 97	\$ 97
Construction Services	\$ -	\$ -	\$ -
<b>Project Total</b>	<b>\$ 6,472</b>	<b>\$ 5,608</b>	<b>\$ 4,882</b>

## Major Contracts (\$s in thousands)

Vendor	Amount	Scope
Parametrix	\$4,512	CE/PE

## Key Project Activities

### Current Period

- Selected project scope elements to be built.

### Next Period

- Begin preliminary engineering - design-build procurement documents.

## Closely Monitored Issues

- Sound Transit is planning to make a financial contribution to the city's SR 410 and Traffic Avenue interchange project (SR 410 Interchange Project) tied to pedestrian, bicycle, and transit access to the station, if other funding for the interchange project can be identified, consistent with the ST2 cost estimate.

# Sounder Commuter Rail Tukwila Station

## Scope

Construction of a new permanent commuter rail station to replace the existing temporary Tukwila Sounder Station on Sound Transit owned property.

The project includes two 600-foot-long platforms with shelters, ADA compliant ramps, stairs, ticket vending machines, and improvements to the underpass connecting the two platforms, a bus transit area with shelters, 390 car parking stalls, 68 bicycle parking spaces, and underground water quality and stormwater detention facilities.



Tukwila Station

## Schedule

	Start	Finish
Prelim. Engineering	Jul 2007	Aug 2009
Final Design	Jan 2012	Sep 2012
Construction	Feb 2013	Jan 2015

## Scope/Schedule/Budget Variance

None reported during this period.

## Major Contracts

 (\$s in thousands)

Vendor	Amount	Scope
KPFF	\$5,434	PE/ED/FD
Absher	\$16,896	CON
Lin & Associates	\$1,515	CM Services

## Project Cost

 (\$s in thousands)

Phase	Lifetime Budget	Commitment to Date	Incurred to Date
Administration	\$ 2,773	\$ 1,745	\$ 1,748
Preliminary Engineering	\$ 1,101	\$ 1,101	\$ 1,101
Final Design	\$ 4,924	\$ 4,614	\$ 4,602
Third Party Agreements	\$ -	\$ -	\$ -
ROW Acquisition and Permits	\$ 11,009	\$ 10,383	\$ 10,375
Construction	\$ 24,081	\$ 17,603	\$ 17,558
Construction Services	\$ 2,081	\$ 1,614	\$ 1,614
<b>Project Total</b>	<b>\$ 45,969</b>	<b>\$ 37,060</b>	<b>\$ 36,998</b>

## Key Project Activities

### Current Period

- Continued planning of follow-on work.

### Next Period

- Begin follow-on work.

## Closely Monitored Issues

- Coordination of platform activities between BNSF, Sound Transit, and Amtrak.

## Scope

Sound Transit is replacing the aging wooden single-track trestle along the rail corridor between East “C” Street with a new, concrete double-track bridge to increase rail capacity for additional Sounder and Amtrak trains and improve reliability of passenger services.



Project will replace existing Tacoma Trestle

## Schedule

	Start	Finish
Prelim. Engineering	Aug 2013	Oct 2014
Final Design	Nov 2014	Nov 2015
Construction	Mar 2016	May 2018

## Scope/Schedule/Budget Variance

None reported during this period.

## Project Cost (\$\$ in thousands)

Phase	Lifetime Budget	Commitment to Date	Incurred to Date
Administration	\$ 4,086	\$ 2,281	\$ 2,344
Preliminary Engineering	\$ 4,497	\$ 4,062	\$ 4,062
Final Design	\$ 13,481	\$ 12,453	\$ 8,499
Third Party Agreements	\$ 1,077	\$ 682	\$ 20
ROW Acquisition and Permits	\$ 10,061	\$ 6,418	\$ 6,295
Construction	\$ 81,641	\$ 58,768	\$ 9,263
Construction Services	\$ 5,666	\$ 4,926	\$ 348
<b>Project Total</b>	<b>\$ 120,509</b>	<b>\$ 89,590</b>	<b>\$ 30,831</b>

## Major Contracts (\$\$ in thousands)

Vendor	Amount	Scope
David Evans & Associates	\$15,713	PE/ED/FD
HNTB	\$1,926	CMC
Flatiron west, Inc.	\$57,512	CON
Voestalpine Nortrak, Inc.	\$605	Track procurement

## Key Project Activities

### Current Period

- Held groundbreaking event for federal, state, and local stakeholders.
- Reviewed construction contractor’s submittals.
- Reviewed proposed WSDOT-funded change order work to be integrated into Tacoma Trestle Track & Signal project.
- Received approval of ST and WSDOT Restated Construction & Maintenance Agreement.

### Next Period

- Seek ST Board approval to increase the project construction contingency, allowing WSDOT-funded change order to be executed.
- Seek ST Board approval to increase the advance rail procurement’s contract budget to order the special track work for the WSDOT-funded change order work.

## Closely Monitored Issues

- Coordination with WSDOT on the design integration of the WSDOT platform extension to the project.
- Redesign of the crossover off the double-track bridge.