

Progress Report Sounder Program

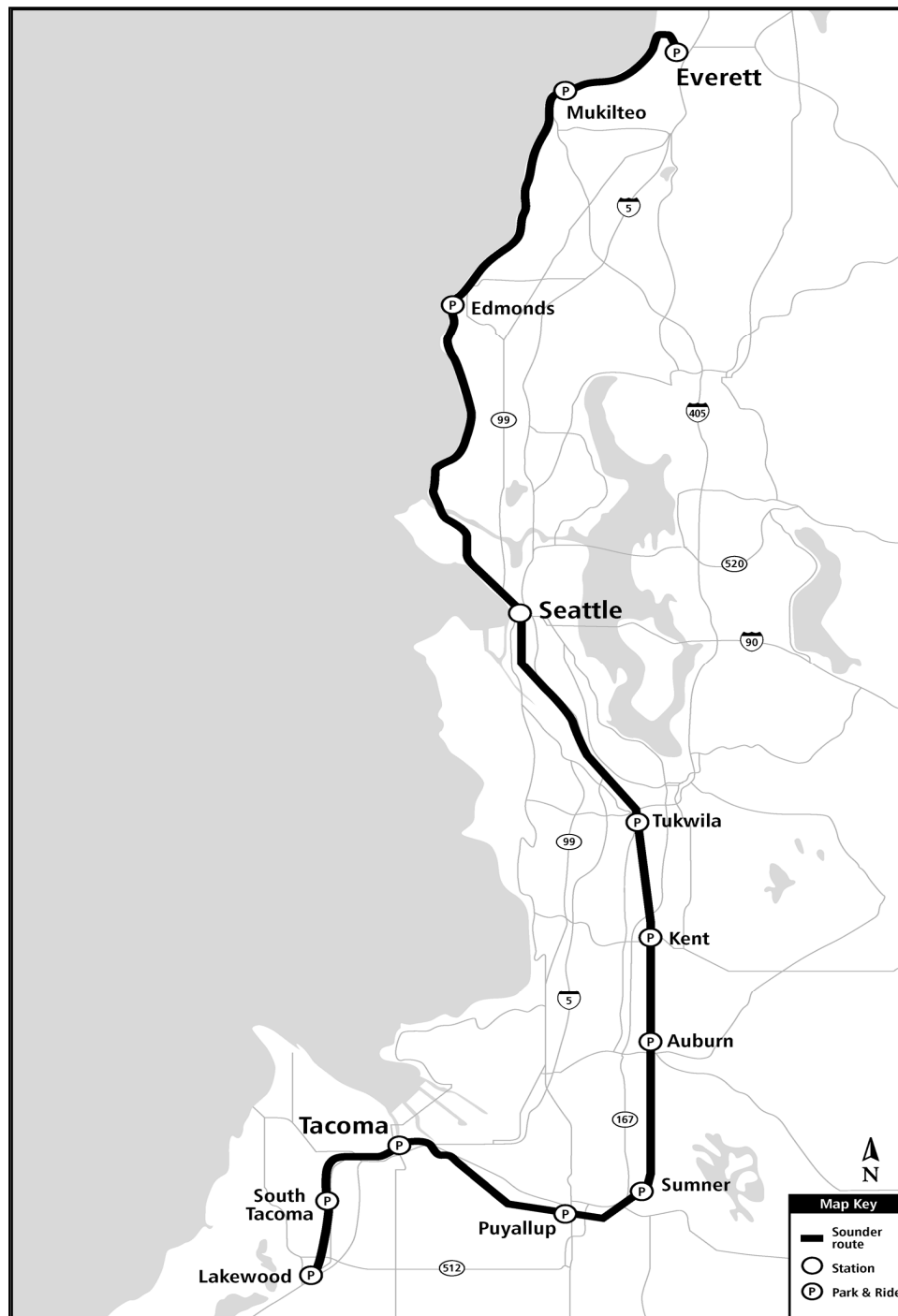


Sound Transit added a mid-day Sounder train to its popular south line service beginning Monday, September 12th

September | 2016



Sounder Commuter Rail Program Overview



Sounder provides commuter rail service between Everett and Lakewood

Projects

Auburn Station Improvements: Project includes alternatives identification, screening, environmental documentation, design and construction of station access improvements at or around Auburn Station. The purpose of the project is to improve access to the existing Sounder Auburn Station for pedestrians, bicyclists, bus riders, and drivers.

Kent Station Improvements: Project includes alternatives identification, screening, environmental documentation, design and construction of station access improvements at or around Kent Station. The purpose of the project is to improve access to the existing Sounder Kent Station for pedestrians, bicyclists, bus riders, and drivers.

Mukilteo Station, South Platform: Full build-out of this station included construction of a second platform, overhead pedestrian bridge, elevators, stair tower, and passenger shelters. Sounder service at the south platform began on April 11, 2016.

Point Defiance Bypass: Sound Transit is administering the construction of the Point Defiance Bypass Track & Signal contract which will construct a new second track adjacent to Sound Transit's existing main line between South Tacoma (66th Street Bridge) and Lakewood (Bridgeport Way) and install new rails, ties, and ballast on Sound Transit's existing track between Lakewood and Nisqually with associated signal and PTC safety systems. The work is being funded by an FRA-administered grant to WSDOT for improvements along the Pacific Northwest High Speed Intercity Passenger Rail corridor.

Positive Train Control: Federal regulations require all passenger train systems be equipped with PTC systems. This necessitates upgrades to Sounder wayside signals, communications, and information management systems along with additional on-board equipment. BNSF is installing wayside elements within the Everett-to-Tacoma corridor. This project includes wayside elements along the Tacoma-to-Lakewood corridor and modifications of locomotives and cab cars for installation of on-board equipment. Congress acted to extend the deadline for implementing PTC to December 2018. Sound Transit will implement PTC operations as early as FRA approvals of its Revenue Service Demonstration and PTC Safety Plans will allow.

Puyallup Station Improvements: Project includes environmental documentation, design, and construction of station access improvements at or around Puyallup Station. The purpose of this project is to accommodate and encourage future demand for ridership in economically efficient and sustainable manner.

Sounder Maintenance Base: Sound Transit will construct a new, approximately 40,000 square-foot railroad maintenance facility to service Sounder commuter trains at its expanded Century Yard facility in the City of Lakewood. The building will contain maintenance bays, materials storage areas, offices and facilities for employees.

Sounder South Expanded Service: Sound Transit has purchased four additional round trip easements from BNSF to expand service between Seattle and Tacoma/Lakewood. Sound Transit is responsible for completing environmental documentation, permitting, and mitigation associated with BNSF construction activities necessary to support those additional round trips. One of the four additional round trips has commenced, timing of the other three is dependent on completing environmental work and ridership demand.

Sounder Yard Expansion: Increased Sounder service in the Everett-to-Lakewood corridor will require additional train sets and a location to store the added trains overnight. The Century Yard is being expanded by an additional storage track to accommodate the new train sets and permanent crew reporting facilities will be incorporated into the design, eliminating the need to lease space for train and engine crews.

Projects continued...

Sumner Station Improvements: Project includes environmental documentation, design, and construction of station access improvements at or around Sumner Station. The purpose of this project is to accommodate and encourage future demands for ridership in an economically efficient and sustainable manner.

Tukwila Station: Construction of a permanent station and platforms to replace the temporary wooden structure has been completed. This project included the construction of an expanded parking lot, bus loop with passenger shelters, bicycle storage area, and new concrete platforms with improved passenger shelters, all sited to accommodate BNSF's new third mainline, now under construction.

Tacoma Trestle Track & Signal: Replacement of existing wooden trestle that is reaching the end of the functional service life with a double track concrete structure. This project will improve overall safety, capacity, and speed in this section of the Sounder corridor.

Sounder Commuter Rail Program Overview



Program Cost Summary

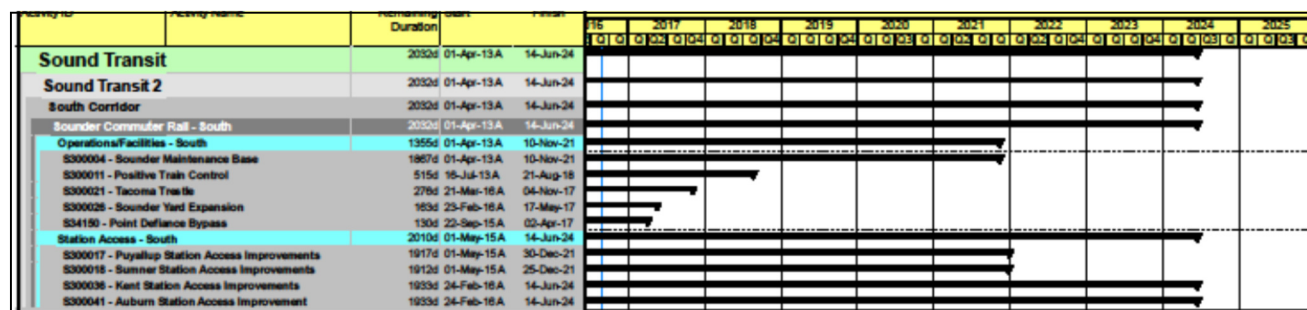
The Program Cost Summary information by project is summarized below. The Adopted Budget reflects the budget for each project through the approved project phase, meaning that for projects approved for Final Design activities only, the project budget will be amended at some point to add budget for construction activities. Further information can be found in the following project pages.

SOUNDER	Adopted Budget	Commitment to Date	Incurred to Date	Forecast to Complete	Estimated Final Cost (EFC)	Adopted Budget vs. EFC
SOUNDER MAINTENANCE BASE	\$ 6.8	\$ 2.7	\$ 2.1	\$ 4.1	\$ 6.8	\$ -
POSITIVE TRAIN CONTROL	\$ 53.1	\$ 43.7	\$ 37.8	\$ 9.4	\$ 53.1	\$ -
PUYALLUP STATION IMPROVEMENTS	\$ 8.4	\$ 3.1	\$ 2.1	\$ 5.3	\$ 8.4	\$ -
SUMNER STATION IMPROVEMENTS	\$ 6.5	\$ 5.7	\$ 4.8	\$ 0.8	\$ 6.5	\$ -
TACOMA TRESTLE TRACK & SIGNAL	\$ 161.1	\$ 90.4	\$ 42.2	\$ 70.7	\$ 161.1	\$ -
SOUNDER YARD EXPANSION	\$ 20.6	\$ 16.5	\$ 6.7	\$ 4.0	\$ 20.5	\$ -
PT DEFIANCE BYPASS	\$ 83.7	\$ 67.4	\$ 51.6	\$ 16.2	\$ 83.6	\$ -
KENT STATION ACCESS IMPRVMNTS	\$ 0.8	\$ 0.0	\$ 0.0	\$ 0.8	\$ 0.8	\$ -
AUBURN STATION ACCESS IMPRVMNT	\$ 0.8	\$ 0.0	\$ 0.0	\$ 0.8	\$ 0.8	\$ -
MUKILTEO STATION-S PLATFORM	\$ 18.3	\$ 14.7	\$ 14.5	\$ 3.6	\$ 18.3	\$ -
TUKWILA STATION	\$ 46.0	\$ 37.3	\$ 37.0	\$ 3.4	\$ 40.7	\$ 5.3
SOUNDER SOUTH EXPANDED SERVICE	\$ 202.0	\$ 194.5	\$ 194.4	\$ 7.4	\$ 202.0	\$ -
TOTAL	\$608.0	\$476.0	\$393.3	\$126.7	\$602.7	\$5.3

Table figures in millions

Sounder Program Schedule

Schedule for active projects are summarized below. Further information can be found in the following project pages.



Construction Safety

Agency-led active construction contracts under the Sounder program are as follows:

- Point Defiance Bypass Project
- Tacoma Trestle Track & Signal Project
- Sounder Yard Expansion

Third-Party Agreements

WSDOT / Amtrak / FRA

- Negotiations have concluded for a Service Outcomes Agreement (SOA) and Stakeholder Agreement for investment of High-Speed Passenger Rail grant money into the Sound Transit rail corridor. The SOA captures Sound Transit's commitment to continued maintenance and operation of the corridor, and the Stakeholder Agreement provides funding to be applied to the completed construction on the D Street-to-M Street project and the on-going Point Defiance Bypass project.

City of Tacoma

- Sound Transit has completed the transfer to the City of Tacoma of surplus properties acquired for the D Street-to-M Street project not needed for Sounder operations. The transfer occurred as part of the purchase and sale agreement for the Reservation Connector rail right-of-way.
- Work Order Agreement - City of Tacoma to conduct design review services and construction inspection services for the Tacoma Trestle & Signal project. City has planned, reviewed, and commented on ST's 60%, 90%, and 100% IFB design submittals.

FTA / WA. Dept. of Archeology and Historical Preservation

- Environmental MOA - Federal Transit Administration (FTA), the responsible Federal agency is providing federal financial assistance for the Tacoma Trestle Track & Signal project. The grant administrator has determined that the project is an undertaking as defined in Title 36 Code of Federal Regulation (CFR) §800.16(y), and thus is subject to review under the Section 106 of the National Historic Preservation Act (NHPA), 16 U.S.C §470 (Section 106) and its implementing regulations, 36 CFR Part 800.

WSDOT

- Construction and Maintenance - Funding of projects on Sound Transit-owned property, including a \$21M contribution to the D-to-M Street Track & Signal project, and 100% funding of the Pt. Defiance Bypass project. For Tacoma Trestle, WSDOT will provide funding for Sound Transit to construct and maintain the platform extension serving Amtrak long-distance trains and other railroad and passenger improvements at Tacoma Dome Station/Freighthouse Square.
- CE and PE Cost Reimbursement - WSDOT wishes to extend the passenger platform at Freighthouse Square onto the bridge in order to accommodate the length of Amtrak trains that will use the station.
- Final Design Cost Reimbursement - WSDOT is to reimburse Sound Transit for the associated design consultant services and other expenditures to complete final design of the extended platform, necessary to accommodate the longer Amtrak trains at their Freighthouse Square Station.

Sprint

- Cost Reimbursement - Sound Transit and Sprint have reached an agreement for Sprint to temporarily relocate their facilities, then permanently relocate their facilities back onto ST's new bridge. The agreement covers expenditures for design and construction activities related to the temporary relocation. A subsequent agreement will be developed for the design work and construction for the permanent relocation of their facilities.
-

Sounder Commuter Rail Program Overview



Quality Assurance

Quality Assurance continues to support the Sounder program through review of design and construction documents and periodic audits of projects in design, construction, and operation.

Description	3 rd Quarter 2016	Notes
Audits/Surveillances Performed	0 Audits 1 Surveillances	S-C-S300021-16-01
Audits/Surveillances Reports Issued	0 Audit 0 Surveillances	None
Reports in Progress	0 Reports	None

Sound Transit Board Actions

Board motions and resolutions directly related to Sounder Program approved this period are summarized in the table.

Motion Number	Description	Date
M2016-76	Contingency Increase for Flatiron West, Inc. Construction Contract for Tacoma Trestle Track & Signal Project	07/28/16
M2016-87	Contingency Increase for Voestalpine Nortrak, Inc. Track Procurement Contract for Tacoma Trestle Track & Signal Project	08/11/16

This page intentionally left blank.

Sounder Commuter Rail Auburn Station Improvements



Scope

The project will consider and build upon the results of the Sounder Station Access and Demand Study completed in 2012. The alternatives analysis phase of the project will evaluate parking, transit, pedestrian, and bicycle access improvements that could be made to improve rider access to Auburn Station.

At the end of the alternatives analysis phase, the ST Board will select an alternative to advance to conceptual and preliminary engineering.



Improving access to Auburn Station

Schedule

	Start	Finish
Prelim. Engineering	2016	2018
Final Design	2019	2021
Construction	2021	2023

Scope/Schedule/Budget Variance

None to report this period.

Project Cost (\$s in thousands)

Phase	Project Budget	Commitment to Date	Incurred to Date
Administration	\$ 207	\$ 9	\$ 10
Preliminary Engineering	\$ 574	\$ -	\$ -
Final Design	\$ -	\$ -	\$ -
Third Party Agreements	\$ -	\$ -	\$ -
ROW Acquisition and Permits	\$ 50	\$ -	\$ -
Construction	\$ -	\$ -	\$ -
Construction Services	\$ -	\$ -	\$ -
Project Total	\$ 831	\$ 9	\$ 10

Major Contracts (\$s in thousands)

Vendor	Amount	Scope
TBD		

Key Project Activities

Current Period

- Work with city staff to procure consultant for alternatives analysis, with the option to continue with environmental review and preliminary design services once a preferred set of improvements have been identified.
- Established the project 2016 annual budget and project budget through alternative analysis and approved Phase Gate 1.

Next Period

- Negotiate consultant scope of work and cost for alternative analysis.
- Present consultant contract to ST Capital Committee for consideration.
- Initiate alternative analysis to evaluate potential parking, transit, pedestrian, and bicycle improvements to improve rider access.

Closely Monitored Issues

- None identified at this time.

Scope

The project will consider and build upon the results of the Sounder Station Access and Demand Study completed in 2012. The alternatives analysis phase of the project will evaluate parking, transit, pedestrian, and bicycle access improvements that could be made to improve rider access to Kent Station.

At the end of the alternatives analysis phase, the ST Board will select an alternative to advance to conceptual and preliminary engineering.



Improving access to Kent Station

Schedule

	Start	Finish
Prelim. Engineering	Oct 2016	2018
Final Design	2019	2021
Construction	2021	2023

Scope/Schedule/Budget Variance

None to report this period.

Major Contracts (\$\$ in thousands)

Vendor	Amount	Scope
TBD		

Project Cost (\$\$ in thousands)

Phase	Project Budget	Commitment to Date	Incurred to Date
Administration	\$ 207	\$ 14	\$ 15
Preliminary Engineering	\$ 574	\$ -	\$ -
Final Design	\$ -	\$ -	\$ -
Third Party Agreements	\$ -	\$ -	\$ -
ROW Acquisition and Permits	\$ 50	\$ -	\$ -
Construction	\$ -	\$ -	\$ -
Construction Services	\$ -	\$ -	\$ -
Project Total	\$ 831	\$ 14	\$ 15

Key Project Activities

Current Period

- Work with city staff to procure consultant for alternatives analysis, with the option to continue with environmental review and preliminary design services once a preferred set of improvements have been identified.
- Established the project 2016 annual budget and project budget through alternatives analysis and approved Phase Gate 1.

Next Period

- Negotiate consultant scope of work and cost for alternative analysis.
- Present consultant contract to ST Capital Committee for consideration.
- Initiate alternative analysis to evaluate potential parking, transit, pedestrian, and bicycle improvements to improve rider access.

Closely Monitored Issues

- None identified at this time.

Sounder Commuter Rail Mukilteo Station, South Platform



Scope

The Mukilteo Station South Platform project includes construction of a second platform, shelter structures, stairs, elevator towers, and a pedestrian bridge connecting the south platform with the existing north platform.



New Sounder Platform at Mukilteo Station

Schedule

	Start	Finish
Prelim. Engineering	Feb 2001	Apr 2005
Final Design	Aug 2007	Sep 2012
Construction	Jan 2014	Feb 2016

Scope/Schedule/Budget Variance

None to report this period.

Project Cost (\$s in thousands)

Phase	Project Budget	Commitment to Date	Incurred to Date
Administration	\$ 1,540	\$ 1,361	\$ 1,362
Preliminary Engineering	\$ -	\$ -	\$ -
Final Design	\$ 2,647	\$ 2,240	\$ 2,240
Third Party Agreements	\$ 35	\$ 35	\$ -
ROW Acquisition and Permits	\$ 1,778	\$ 486	\$ 478
Construction	\$ 10,363	\$ 8,851	\$ 8,738
Construction Services	\$ 1,950	\$ 1,723	\$ 1,724
Project Total	\$ 18,313	\$ 14,696	\$ 14,542

Major Contracts (\$s in thousands)

Vendor	Amount	Scope
AECOM	\$2,154	FD
CA Carey Corp.	\$7,548	CON
KBA	\$1,650	CM Services

Key Project Activities

Current Period

- Achieved substantial project completion.
- Addressed follow on work needing completion before Transfer to Operations.

Next Period

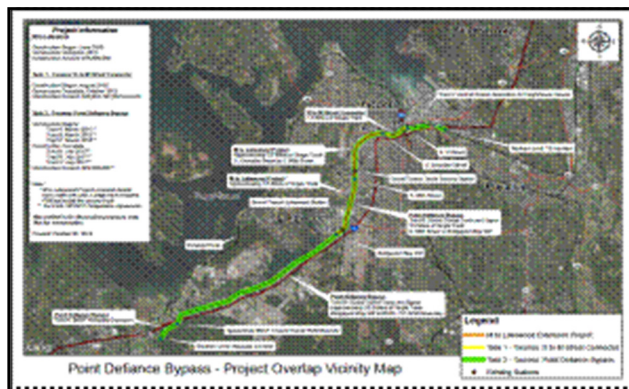
- Continue to address follow on work.

Closely Monitored Issues

- None identified at this time.

Scope

Sound Transit is administering the construction of WSDOT Point Defiance Bypass Project which will construct a new second track adjacent to Sound Transit's existing main line between South Tacoma (South 66th St. Bridge) and Lakewood (Bridgeport Way) and install new rails, ties, ballast and signaling and PTC systems on Sound Transit's existing track between Lakewood and Nisqually.



Point Defiance Bypass—Project Overlay Vicinity Map

Schedule

	Start	Finish
Prelim. Engineering	N/A	N/A
Final Design	N/A	N/A
Construction	Aug 2015	Mar 2017

Scope/Schedule/Budget Variance

None to report this period.

Major Contracts (\$s in thousands)

Vendor	Amount	Scope
HNTB	\$8,867	CMC
Stacy and Witbeck, Inc.	\$54,471	CON
Voestalpine Nortrak, Inc.	\$1,306	Track Procurement

Project Cost (\$s in thousands)

Phase	Project Budget	Commitment to Date	Incurred to Date
Administration	\$ 3,201	\$ 1,761	\$ 1,789
Preliminary Engineering	\$ -	\$ -	\$ -
Final Design	\$ 200	\$ 103	\$ 103
Third Party Agreements	\$ -	\$ -	\$ -
ROW Acquisition and Permits	\$ 400	\$ 54	\$ 50
Construction	\$ 69,623	\$ 56,641	\$ 46,099
Construction Services	\$ 10,246	\$ 8,874	\$ 3,620
Project Total	\$ 83,670	\$ 67,433	\$ 51,661

Key Project Activities

Current Period

- Continued main track trackwork and bridge work.
- Continued to build, wire, and test signal bungalows.
- Working on install signal foundations.
- Installed conduit.
- Installed permanent fencing.
- Continued review submittals and responded to RFIs.

Next Period

- Finishing track work from 66th Street to Nisqually Junction.
- Construct ecology block wall.
- Constructing ditches from Bridgeport Way south.

Closely Monitored Issues

- Project designed by the Washington State Department of Transportation is funded through an ARRA grant made available by the FRA. Work for this project must be completed in March 2017 in order to leverage all available funding.
- Third-party fiber optic relocation work is on-going and requires coordination between contractors.

Sounder Commuter Rail Positive Train Control



Scope

Positive Train Control (PTC) systems are integrated command, control, communications, and information systems for controlling train movements. The systems improve railroad safety by significantly reducing the probability of collisions between trains, casualties to railway workers, and over-speed accidents.

Congress acted to extend the deadline for implementing PTC to December 2018.



Improving safety along the Tacoma-to-Lakewood corridor

Schedule

	Start	Finish
Prelim. Engineering	N/A	N/A
Final Design	Jul 2013	May 2014
Construction	Jun 2014	Jul 2017

Scope/Schedule/Budget Variance

Third-party delays has pushed the anticipated project completion date to July 2017.

Major Contracts (\$s in thousands)

Vendor	Amount	Scope
Xorail, Inc.	\$34,923	Design/System install
LTK Eng. Svcs.	\$2,287	CM/Eng. Services

Project Cost (\$s in thousands)

Phase	Project Budget	Commitment to Date	Incurred to Date
Administration	\$ 2,238	\$ 1,351	\$ 1,356
Preliminary Engineering	\$ -	\$ -	\$ -
Final Design	\$ 279	\$ 226	\$ 226
Third Party Agreements	\$ 4,267	\$ 3,900	\$ 2,510
ROW Acquisition and Permits	\$ -	\$ -	\$ -
Construction	\$ 40,484	\$ 35,986	\$ 33,004
Construction Services	\$ 4,062	\$ 2,287	\$ 751
Contingency	\$ 1,725	\$ -	\$ -
Project Total	\$ 53,055	\$ 43,750	\$ 37,847

Key Project Activities

Current Period

- Continued work to resolve punch list items.
- Continued work on developing PTC Safety Plan.
- Issued a partial Stop Work order on Xo-rail that involves activities with the BNSF PTC system.

Next Period

- Further testing with BNSF on scenic sub division.
- ST and Tacoma Rail to agree to scope of PTC testing for Tacoma Rail equipment.

Closely Monitored Issues

- FRA review and approval of documents.
- BNSF will likely not activate their PTC system on the Seattle and Lakewood sub-divisions until Spring/ Summer 2017. Therefore, Sound Transit's system integration activities to be performed by ST's contractor, Xo-rail will be on hold until that time.

Scope

This project is currently undertaking a NEPA/SEPA environmental review and preliminary engineering for access improvements identified through the Access and Demand Study. ST Board identified improvements include a new parking garage at the Puyallup Station, additional parking facilities, station area pedestrian access improvements, bicycle lane or path improvements near the station, secure bicycle storage, and station area traffic improvements.

The project scope for Final Design will be determined with the concurrence of community and municipal stakeholders, following completion of conceptual and preliminary engineering.



Improving access to Puyallup Station

Schedule

	Start	Finish
Prelim. Engineering	Jun 2013	2017
Final Design	2019	2019
Construction	2019	2021

Scope/Schedule/Budget Variance

None to report this period.

Major Contracts (\$s in thousands)

Vendor	Amount	Scope
Parametrix	\$2,233	CE/PE

Project Cost (\$s in thousands)

Phase	Project Budget	Commitment to Date	Incurred to Date
Administration	\$ 757	\$ 494	\$ 502
Preliminary Engineering	\$ 2,680	\$ 2,280	\$ 1,509
Final Design	\$ -	\$ -	\$ -
Third Party Agreements	\$ -	\$ -	\$ -
ROW Acquisition and Permits	\$ 4,977	\$ 327	\$ 90
Construction	\$ -	\$ -	\$ -
Construction Services	\$ -	\$ -	\$ -
Project Total	\$ 8,414	\$ 3,101	\$ 2,101

Key Project Activities

Current Period

- Began Preliminary Engineering.
- Presented offers to parcel owners for acquisition.

Next Period

- Begin design-build documents.
- Continue negotiation offers to parcel owners for relocation and acquisition.

Closely Monitored Issues

- None identified at this time.

Sounder Commuter Rail Sounder Maintenance Base



Scope

Sound Transit plans to build an operations and maintenance facility to service Sounder commuter trains. The single-story building will contain maintenance bays, material storage areas, offices and facilities for employees. Supporting improvements, such as roadway, site lightning, drainage facilities, and required utility infrastructure are included in the project.



Amtrak currently provides Sounder vehicle maintenance

Schedule

	Start	Finish
Prelim. Engineering	2016	TBD
Final Design	TBD	TBD
Construction	2018	2023

Scope/Schedule/Budget Variance

None to report this period.

Major Contracts (\$s in thousands)

Vendor	Amount	Scope
Parsons Brinckerhoff	\$2,300	PE/ED

Project Cost (\$s in thousands)

Phase	Project Budget	Commitment to Date	Incurred to Date
Administration	\$ 860	\$ 468	\$ 468
Preliminary Engineering	\$ 5,116	\$ 2,149	\$ 1,615
Final Design	\$ -	\$ -	\$ -
Third Party Agreements	\$ -	\$ -	\$ -
ROW Acquisition and Permits	\$ 865	\$ 102	\$ 48
Construction	\$ -	\$ -	\$ -
Construction Services	\$ -	\$ -	\$ -
Project Total	\$ 6,841	\$ 2,719	\$ 2,131

Key Project Activities

Current Period

- Issued appraisal on key private parcel and transmitted to FTA for review and approval.
- Started consultant's scope of work on the next design phase of the project.
- Held coordination meeting with City of Lakewood.

Next Period

- Issue recommendation on project delivery method.

Closely Monitored Issues

- Moderate noise and traffic impacts documented in the environmental analysis have been the subject of comments from the City of Lakewood.

Scope

Purchase of four additional commuter rail easements from BNSF for expanding service between Seattle and Lakewood. A number of track and signal improvements that are needed between Seattle and Tacoma to accommodate additional service will be funded by the project.

BNSF is currently completing design of the improvements and intends to incrementally complete construction as additional service is added. Additional round trips are planned for 2016 and 2017.



Additional morning and evening service between Seattle and Lakewood

Schedule

	Start	Finish
Prelim. Engineering	Oct 2010	Mar 2012
Final Design	Aug 2011	Apr 2018
Construction	Sep 2015	Apr 2018

Scope/Schedule/Budget Variance

None to report this period.

Major Contracts (\$s in thousands)

Vendor	Amount	Scope
ESA Adolfson	\$416	PE

Project Cost (\$s in thousands)

Phase	Project Budget	Commitment to Date	Incurred to Date
Administration	\$ 2,250	\$ 1,134	\$ 1,134
Preliminary Engineering	\$ 707	\$ 479	\$ 479
Final Design	\$ 700	\$ 184	\$ 108
Third Party Agreements	\$ 300	\$ 71	\$ -
ROW Acquisition and Permits	\$ 186,485	\$ 185,211	\$ 185,191
Construction	\$ 11,226	\$ 7,439	\$ 7,421
Construction Services	\$ 300	\$ -	\$ -
Project Total	\$ 201,968	\$ 194,518	\$ 194,333

Key Project Activities

Current Period

- Executed the 55th Avenue Fish Passage Culvert Cost Reimbursement Agreement with King County.
- Reviewed first draft of the Culvert project feasibility study.
- Completed BNSF Railway Construction activities.

Next Period

- Review consultant's responses to comments on the draft culvert project feasibility study.
- ST and King County to determine and reach concurrence on the preferred option for the culvert replacement project.
- Develop consultant's preliminary design scope of work for the culvert replacement project.

Closely Monitored Issues

- Implementation of the fish passage culvert mitigation project. Mitigation project must be constructed by April 2018.

Sounder Commuter Rail Sounder Yard Expansion



Scope

The Sounder Yard Expansion project includes design and construction of a third storage track and civil improvements to accommodate seven Sounder train sets at the Sounder layover facility, Century Yard in Lakewood.

This additional storage capacity is necessary when additional Sounder South trains, approved in ST2, begin service between Tacoma and Seattle in 2016 in advance of completion of the Sounder Maintenance Base project.



Sounder Yard Expansion will increase storage capacity for Sounder 7th train set

Schedule

	Start	Finish
Prelim. Engineering	Jul 2013	Jun 2014
Final Design	Jun 2014	Sep 2015
Construction	Feb 2016	Jun 2017

Scope/Schedule/Budget Variance

None to report this period.

Project Cost (\$s in thousands)

Phase	Project Budget	Commitment to Date	Incurred to Date
Administration	\$ 1,200	\$ 744	\$ 764
Preliminary Engineering	\$ 2,150	\$ 1,779	\$ 1,208
Final Design	\$ -	\$ -	\$ -
Third Party Agreements	\$ -	\$ -	\$ -
ROW Acquisition and Permits	\$ 400	\$ 245	\$ 185
Construction	\$ 15,400	\$ 12,551	\$ 4,166
Construction Services	\$ 1,400	\$ 1,182	\$ 343
Project Total	\$ 20,550	\$ 16,501	\$ 6,666

Major Contracts (\$s in thousands)

Vendor	Amount	Scope
Parsons Brinkerhoff	\$1,694	PE/DB
HNTB	\$1,182	CMC
Shimmick Construction	\$12,005	D/CON

Key Project Activities

Current Period

- Began construction/ground breaking.

Next Period

- Third track in place for train storage.

Closely Monitored Issues

- None identified at this time.

Sounder Commuter Rail Sumner Station Improvements

Scope

This project is currently undertaking NEPA/SEPA environmental review and preliminary engineering for access improvements identified through the Access and Demand Study. ST Board identified improvements include a new parking garage at the Sumner Station, station area pedestrian access improvements, secure bicycle storage at the station and station area traffic improvements.

The project scope for Final Design will be determined with the concurrence of community and municipal stakeholders, following completion of conceptual and preliminary engineering.



Improving access to Sumner Station

Schedule

	Start	Finish
Prelim. Engineering	Apr 2013	2017
Final Design	2018	2019
Construction	2019	2021

Scope/Schedule/Budget Variance

None to report this period.

Project Cost (\$s in thousands)

Phase	Project Budget	Commitment to Date	Incurred to Date
Administration	\$ 762	\$ 499	\$ 509
Preliminary Engineering	\$ 2,685	\$ 2,310	\$ 1,513
Final Design	\$ -	\$ -	\$ -
Third Party Agreements	\$ -	\$ -	\$ -
ROW Acquisition and Permits	\$ 2,912	\$ 2,765	\$ 2,703
Construction	\$ 113	\$ 97	\$ 97
Construction Services	\$ -	\$ -	\$ -
Project Total	\$ 6,472	\$ 5,671	\$ 4,822

Major Contracts (\$s in thousands)

Vendor	Amount	Scope
Parametrix	\$2,233	CE/PE

Key Project Activities

Current Period

- Began Preliminary Engineering.

Next Period

- Authorize property acquisition.

Closely Monitored Issues

- Sound Transit is planning to make a financial contribution to the city's SR 410 and Traffic Avenue interchange project (SR 410 Interchange Project) tied to pedestrian, bicycle, and transit access to the station, if other funding for the interchange project can be identified, consistent with the ST2 cost estimate.

Sounder Commuter Rail Tacoma Trestle Track and Signal



Scope

Sound Transit is replacing the aging wooden single-track trestle along the rail corridor between East "C" Street with a new, concrete double-track bridge to increase rail capacity for additional Sounder and Amtrak trains and improve reliability of passenger services.



Project will replace existing Tacoma Trestle

Schedule

	Start	Finish
Prelim. Engineering	Aug 2013	Oct 2014
Final Design	Nov 2014	Nov 2015
Construction	Mar 2016	May 2018

Scope/Schedule/Budget Variance

None reported during this period.

Project Cost (\$s in thousands)

Phase	Project Budget	Commitment to Date	Incurred to Date
Administration	\$ 8,094	\$ 2,553	\$ 2,598
Preliminary Engineering	\$ 4,062	\$ 4,062	\$ 4,062
Final Design	\$ 15,198	\$ 12,342	\$ 9,097
Third Party Agreements	\$ 1,781	\$ 682	\$ 45
ROW Acquisition and Permits	\$ 10,061	\$ 6,584	\$ 6,452
Construction	\$ 114,288	\$ 59,244	\$ 18,840
Construction Services	\$ 7,581	\$ 4,926	\$ 1,069
Project Total	\$ 161,065	\$ 90,393	\$ 42,163

Major Contracts (\$s in thousands)

Vendor	Amount	Scope
David Evans & Associates	\$15,713	PE/ED/FD
HNTB	\$4,926	CMC
Flatiron west, Inc.	\$57,862	CON
Voestalpine Nortrak, Inc.	\$605	Track procurement

Key Project Activities

Current Period

- Transmitted the preliminary engineering of "L" street crossover.
- Conducted project tour for FTA Grant staff.
- Began Phase 1 pile driving construction for the new south bridge.

Next Period

- Design consultant to transmit the "L" Street crossover final design package.
- Continue Phase 1 pile driving for the new south bridge.

Closely Monitored Issues

- Coordination with WSDOT on the design integration of the platform extensions to the Trestle design package and signal design integration of the ST Tacoma Trestle Project and WSDOT Point Defiance Bypass Project.

Scope

Construction of a new permanent commuter rail station to replace the existing temporary Tukwila Sounder Station on Sound Transit owned property.

The project includes two 600-foot-long platforms with shelters, ADA compliant ramps, stairs, ticket vending machines, and improvements to the underpass connecting the two platforms, a bus transit area with shelters, 390 car parking stalls, 68 bicycle parking spaces, and underground water quality and stormwater detention facilities.



Tukwila Station

Schedule

	Start	Finish
Prelim. Engineering	Jul 2007	Aug 2009
Final Design	Jan 2015	Sep 2012
Construction	Feb 2013	Jan 2015

Scope/Schedule/Budget Variance

None reported during this period.

Major Contracts (\$s in thousands)

Vendor	Amount	Scope
KPFF	\$5,434	PE/ED/FD
Absher	\$15,946	CON
Lin & Associates	\$1,515	CM Services

Project Cost (\$s in thousands)

Phase	Project Budget	Commitment to Date	Incurred to Date
Administration	\$ 2,773	\$ 1,774	\$ 1,776
Preliminary Engineering	\$ 1,101	\$ 1,101	\$ 1,101
Final Design	\$ 4,924	\$ 4,629	\$ 4,569
Third Party Agreements	\$ -	\$ -	\$ -
ROW Acquisition and Permits	\$ 11,009	\$ 10,383	\$ 10,375
Construction	\$ 24,081	\$ 17,799	\$ 17,558
Construction Services	\$ 2,081	\$ 1,614	\$ 1,614
Project Total	\$ 45,969	\$ 37,300	\$ 36,993

Close-out Activities

Current Period

- Awarded JOC contract to address follow-on work.

Next Period

- Due to current 3rd Track work and lack of a dry weather window. The follow on work will be on hold until 2Q 2017.

Closely Monitored Issues

- Coordination of platform activities between BNSF, Sound Transit, and Amtrak.