

Progress Report Sounder Program

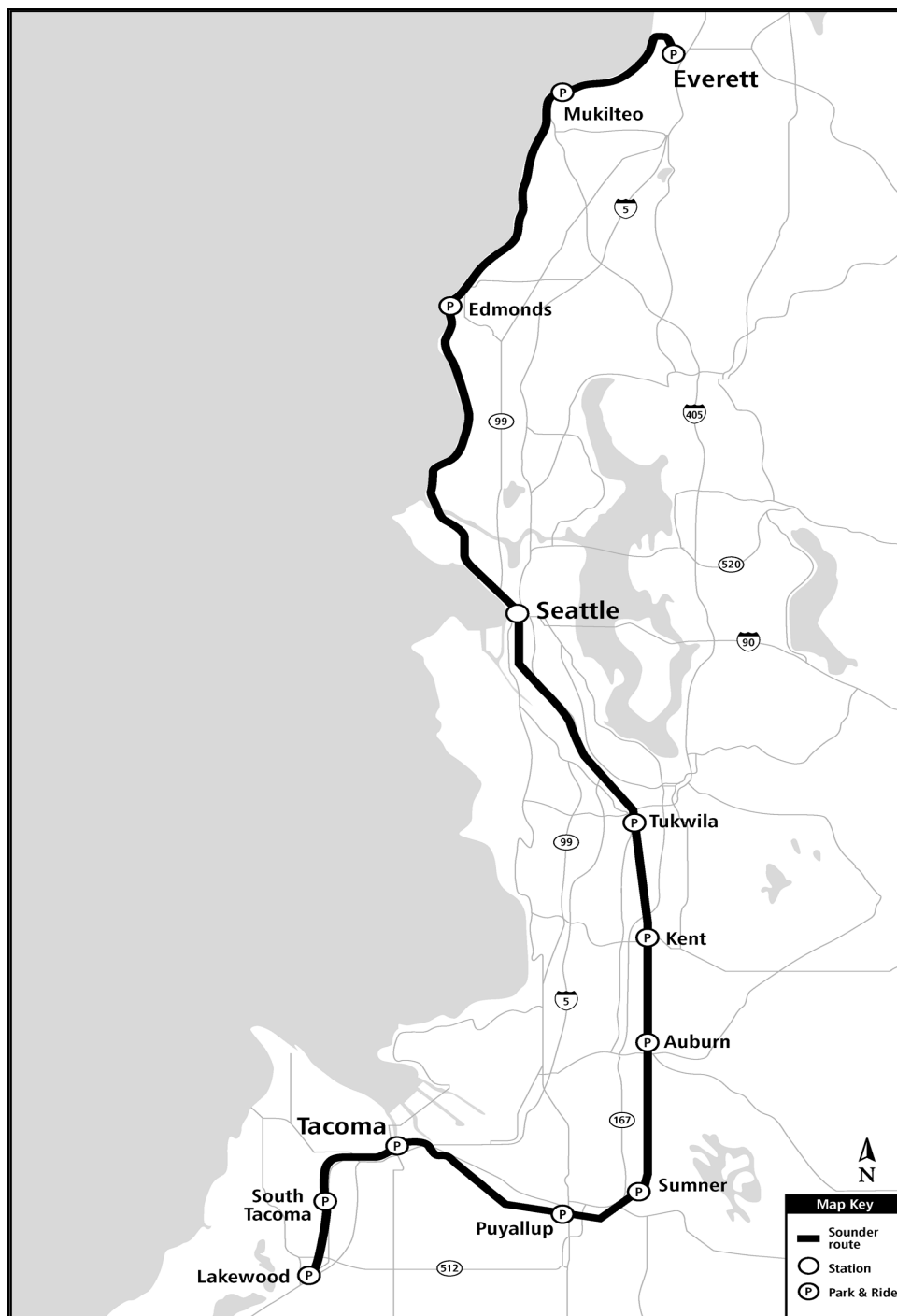


Sounder trains travel between Lakewood and Seattle (stopping in So. Tacoma, Tacoma, Puyallup, Sumner, Auburn, Kent, and Tukwila) and between Everett and Seattle (stopping in Mukilteo and Edmonds)

December | 2016



Sounder Commuter Rail Program Overview



Sounder provides commuter rail service between Everett and Lakewood

Projects

Below is a summary description for each active project under the Sounder Commuter Rail Capital Program. Project status information can be found on the following projects pages.

Auburn Station Improvements: Project includes alternatives identification, screening, environmental documentation, design and construction of station access improvements at or around Auburn Station. The purpose of the project is to improve access to the existing Sounder Auburn Station for pedestrians, bicyclists, bus riders, and drivers.

Kent Station Improvements: Project includes alternatives identification, screening, environmental documentation, design and construction of station access improvements at or around Kent Station. The purpose of the project is to improve access to the existing Sounder Kent Station for pedestrians, bicyclists, bus riders, and drivers.

Mukilteo Station, South Platform: Full build-out of this station included construction of a second platform, overhead pedestrian bridge, elevators, stair tower, and passenger shelters. Sounder service at the south platform began on April 11, 2016. The project page for this project has been removed. Only follow-on work remains. Cost status can be found on the Program Cost Summary table.

Point Defiance Bypass: Sound Transit is administering the construction of the Point Defiance Bypass Track & Signal contract which will construct a new second track adjacent to Sound Transit's existing main line between South Tacoma (66th Street Bridge) and Lakewood (Bridgeport Way) and install new rails, ties, and ballast on Sound Transit's existing track between Lakewood and Nisqually with associated signal and PTC safety systems. The work is being funded by an FRA-administered grant to WSDOT for improvements along the Pacific Northwest High Speed Inter-city Passenger Rail corridor.

Positive Train Control: Federal regulations require all passenger train systems be equipped with PTC systems. This necessitates upgrades to Sounder wayside signals, communications, and information management systems along with additional on-board equipment. BNSF is installing wayside elements within the Everett-to-Tacoma corridor. This project includes wayside elements along the Tacoma-to-Lakewood corridor and modifications of locomotives and cab cars for installation of on-board equipment. Congress acted to extend the deadline for implementing PTC to December 2018. Sound Transit will implement PTC operations as early as FRA approvals of its Revenue Service Demonstration and PTC Safety Plans will allow.

Puyallup Station Improvements: Project includes environmental documentation, design, and construction of station access improvements at or around Sounder Puyallup Station. The purpose of this project is to accommodate and encourage future demand for ridership in economically efficient and sustainable manner.

Sounder Maintenance Base: Sound Transit will construct a new, approximately 40,000 square-foot railroad maintenance facility to service Sounder commuter trains at its expanded Century Yard facility in the City of Lakewood. The building will contain maintenance bays, materials storage areas, offices and facilities for employees.

Sounder South Expanded Service: Sound Transit has purchased four additional round trip easements from BNSF to expand service between Seattle and Tacoma/Lakewood. Sound Transit is responsible for completing environmental documentation, permitting, and mitigation associated with BNSF construction activities necessary to support those additional round trips.

Sounder Yard Expansion: Increased Sounder service in the Everett-to-Lakewood corridor will require additional train sets and a location to store the added trains overnight. The Century Yard is being expanded by an additional storage track to accommodate the new train sets and permanent crew reporting facilities will be incorporated into the design, eliminating the need to lease space for train and engine crews.

Projects continued...

Sumner Station Improvements: Project includes environmental documentation, design, and construction of station access improvements at or around Sounder Sumner Station. The purpose of this project is to accommodate and encourage future demands for ridership in an economically efficient and sustainable manner.

Tukwila Station: Construction of a permanent station and platforms to replace the temporary wooden structure has been completed. This project included the construction of an expanded parking lot, bus loop with passenger shelters, bicycle storage area, and new concrete platforms with improved passenger shelters, all sited to accommodate BNSF's new third mainline, now under construction. The project page for this project has been removed. Only follow-on work remains. Cost status can be found on the Program Cost Summary table.

Tacoma Trestle Track & Signal: Replacement of existing wooden trestle that is reaching the end of the functional service life with a double track concrete structure. This project will improve overall safety, capacity, and speed in this section of the Sounder corridor.

Program Cost Summary

The Program Cost Summary information by project is summarized below. The Adopted Budget reflects the budget for each project through the approved project phase, meaning that for projects approved for Final Design activities only, the project budget will be amended at some point to add budget for construction activities. Further information can be found in the following project pages.

SOUNDER	Adopted Budget	Commitment to Date	Incurred to Date	Forecast to Complete	Estimated Final Cost (EFC)	Adopted Budget vs. EFC
SOUNDER MAINTENANCE BASE	\$ 6.8	\$ 2.8	\$ 2.2	\$ 4.1	\$ 6.8	\$ -
POSITIVE TRAIN CONTROL	\$ 53.1	\$ 43.9	\$ 38.0	\$ 9.1	\$ 53.1	\$ -
PUYALLUP STATION IMPROVEMENTS	\$ 11.0	\$ 3.4	\$ 2.3	\$ 7.6	\$ 11.0	\$ -
SUMNER STATION IMPROVEMENTS	\$ 6.5	\$ 5.8	\$ 5.0	\$ 0.7	\$ 6.5	\$ -
TACOMA TRESTLE TRACK & SIGNAL	\$ 161.1	\$ 111.4	\$ 55.4	\$ 49.7	\$ 161.1	\$ -
SOUNDER YARD EXPANSION	\$ 20.6	\$ 16.2	\$ 13.0	\$ 4.4	\$ 20.5	\$ -
PT DEFIANCE BYPASS	\$ 83.7	\$ 70.6	\$ 61.7	\$ 13.1	\$ 83.6	\$ -
KENT STATION ACCESS IMPRVMTS	\$ 0.8	\$ 0.5	\$ 0.1	\$ 0.4	\$ 0.8	\$ -
AUBURN STATION ACCESS IMPRVMT	\$ 0.8	\$ 0.5	\$ 0.1	\$ 0.4	\$ 0.8	\$ -
MUKILTEO STATION-S PLATFORM	\$ 18.3	\$ 14.7	\$ 14.7	\$ 3.6	\$ 18.3	\$ -
TUKWILA STATION	\$ 46.0	\$ 37.1	\$ 37.0	\$ 3.6	\$ 40.7	\$ 5.3
SOUNDER SOUTH EXPANDED SERVICE	\$ 202.0	\$ 194.5	\$ 194.4	\$ 7.4	\$ 202.0	\$ -
Total SOUNDER	\$ 610.6	\$ 501.3	\$ 423.9	\$ 104.0	\$ 605.2	\$ 5.3

Table figures in millions

Sounder Commuter Rail Program Overview



Sounder Program Schedule

20-Jan-17 16:51 Prepared by: Brian Ellingson		Sounder APR Update - December 2016										Sounder APR Update_10212016									
Activity Name	Remaining Duration	Start	Finish	2017	2018	2019	2020	2021	2022	2023	2024	2025	2026	2027	2028	2029	2030	2031	2032	2033	2034
Sound Transit	1889d	01-Apr-13A	25-Jun-24																		
Sound Transit 2	1889d	01-Apr-13A	25-Jun-24																		
South Corridor	1889d	01-Apr-13A	25-Jun-24																		
Sounder Commuter Rail - South	1889d	01-Apr-13A	25-Jun-24																		
Operations/Facilities - South	1759d	01-Apr-13A	30-Dec-23																		
S300004 - Sounder Maintenance Base	2555d	01-Apr-13A	30-Dec-23																		
S300011 - Positive Train Control	427d	18-Jul-13A	21-Aug-18																		
S300021 - Tacoma Trestle	233d	21-Mar-16A	04-Dec-17																		
S300026 - Sounder Yard Expansion	95d	23-Feb-16A	14-May-17																		
S34190 - Point Defiance Bypass	59d	23-Sep-15A	27-Mar-17																		
Station Access - South	1889d	01-May-15A	25-Jun-24																		
S300017 - Puyallup Station Access Improvements	1710d	01-May-15A	08-Sep-21																		
S300018 - Sumner Station Access Improvements	1820d	01-May-15A	25-Dec-21																		
S300036 - Kent Station Access Improvements	1879d	24-Feb-16A	25-Jun-24																		
S300041 - Auburn Station Access Improvement	1857d	24-Feb-16A	23-May-24																		

Construction Safety

Agency-led active construction contracts under the Sounder program are as follows:

- Point Defiance Bypass Project
- Tacoma Trestle Track & Signal Project
- Sounder Yard Expansion

Third-Party Agreements

- Negotiations have concluded for a Service Outcomes Agreement (SOA) and Stakeholder Agreement for investment of High-Speed Passenger Rail grant money into the Sound Transit rail corridor. The SOA captures Sound Transit's commitment to continued maintenance and operation of the corridor, and the Stakeholder Agreement provides funding to be applied to the completed construction on the D Street-to-M Street project and the on-going Point Defiance Bypass project.

City of Tacoma

- Sound Transit has completed the transfer to the City of Tacoma of surplus properties acquired for the D Street-to-M Street project not needed for Sounder operations. The transfer occurred as part of the purchase and sale agreement for the Reservation Connector rail right-of-way.
- Work Order Agreement - City of Tacoma to conduct design review services and construction inspection services for the Tacoma Trestle & Signal project. City has planned, reviewed, and commented on ST's 60%, 90%, and 100% IFB design submittals.

FTA / WA. Dept. of Archeology and Historical Preservation

- Environmental MOA - Federal Transit Administration (FTA), the responsible Federal agency is providing federal financial assistance for the Tacoma Trestle Track & Signal project. The grant administrator has determined that the project is an undertaking as defined in Title 36 Code of Federal Regulation (CFR) §800.16(y), and thus is subject to review under the Section 106 of the National Historic Preservation Act (NHPA), 16 U.S.C §470 (Section 106) and its implementing regulations, 36 CFR Part 800.

Third-Party Agreements continued...

WSDOT

- Construction and Maintenance - Funding of projects on Sound Transit-owned property, including a \$21M contribution to the D-to-M Street Track & Signal project, and 100% funding of the Pt. Defiance Bypass project. For Tacoma Trestle, WSDOT will provide funding for Sound Transit to construct and maintain the platform extension serving Amtrak long-distance trains and other railroad and passenger improvements at Tacoma Dome Station/Freighthouse Square.
- CE and PE Cost Reimbursement - WSDOT wishes to extend the passenger platform at Freighthouse Square onto the bridge in order to accommodate the length of Amtrak trains that will use the station.
- Final Design Cost Reimbursement - WSDOT is to reimburse Sound Transit for the associated design consultant services and other expenditures to complete final design of the extended platform, necessary to accommodate the longer Amtrak trains at their Freighthouse Square Station.

Sprint

- Cost Reimbursement - Sound Transit and Sprint have reached an agreement for Sprint to temporarily relocate their facilities, then permanently relocate their facilities back onto ST's new bridge. The agreement covers expenditures for design and construction activities related to the temporary relocation. A subsequent agreement will be developed for the design work and construction for the permanent relocation of their facilities.

Quality Assurance

Quality Assurance continues to support the Sounder program through review of design and construction documents and periodic audits of projects in design, construction, and operations.

Description	4 th Quarter 2016	Notes
Audits/Surveillances Performed	0 Audits 1 Surveillances	S-C-S300021-16-01
Audits/Surveillances Reports Issued	0 Audit 0 Surveillances	None
Reports in Progress	0 Reports	None

Sound Transit Board Actions

Board motions and resolutions directly related to Sounder Program approved this period are summarized in the table.

Motion Number	Description	Date
	None to report this period	

This page intentionally left blank.

Scope

The alternatives analysis phase of the project will evaluate parking, transit, pedestrian, and bicycle access improvements that could be made to improve rider access to Auburn Station. At the end of the alternatives analysis phase, the ST Board will identify an alternative to advance to conceptual and preliminary engineering.



Improving access to Auburn Station

Schedule

	Start	Finish
Prelim. Engineering	2016	2018
Final Design	2019	2021
Construction	2021	2023

Scope/Schedule/Budget Variance

None to report this period.

Project Cost (\$ in thousands)

Phase	Project Budget	Commitment to Date	Incurred to Date
Administration	\$ 207	\$ 19	\$ 20
Preliminary Engineering	\$ 574	\$ 495	\$ 44
Final Design	\$ -	\$ -	\$ -
Third Party Agreements	\$ -	\$ -	\$ -
ROW Acquisition and Permits	\$ 50	\$ -	\$ -
Construction	\$ -	\$ -	\$ -
Construction Services	\$ -	\$ -	\$ -
Project Total	\$ 831	\$ 514	\$ 64

Major Contracts (\$ in thousands)

Vendor	Amount	Scope
CDM Smith Inc.	\$495	PE/CE

Key Project Activities

Current Period

- Negotiated consultant scope of work for alternative Analysis.
- Presented consultant contract ST Capital Committee for consideration.

Next Period

- Initiate stakeholder engagement process and technical analysis to develop project goals, objectives and evaluation criteria.
- Identify potential parking, pedestrian, bicycle and transit improvements for evaluation.
- Evaluate and compare access improvements alternatives; obtain feedback from stakeholders.

Closely Monitored Issues

- None identified at this time.

Sounder Commuter Rail Kent Station Improvements

Scope

The alternatives analysis phase of the project will evaluate parking, transit, pedestrian, and bicycle access improvements that could be made to improve rider access to Kent Station. At the end of the alternatives analysis phase, the ST Board will identify an alternative to advance to conceptual and preliminary engineering.



Improving access to Kent Station

Schedule

	Start	Finish
Prelim. Engineering	Oct 2016	2018
Final Design	2019	2021
Construction	2021	2023

Scope/Schedule/Budget Variance

None to report this period.

Major Contracts

(\$s in thousands)

Vendor	Amount	Scope
CDM Smith Inc.	\$495	PE/CE

Project Cost (\$s in thousands)

Phase	Project Budget	Commitment to Date	Incurred to Date
Administration	\$ 207	\$ 26	\$ 27
Preliminary Engineering	\$ 574	\$ 495	\$ 44
Final Design	\$ -	\$ -	\$ -
Third Party Agreements	\$ -	\$ -	\$ -
ROW Acquisition and Permits	\$ 50	\$ -	\$ -
Construction	\$ -	\$ -	\$ -
Construction Services	\$ -	\$ -	\$ -
Project Total	\$ 831	\$ 521	\$ 71

Key Project Activities

Current Period

- Negotiated consultant scope of work for alternative analysis.
- Presented consultant contract to ST Capital Committee for consideration.

Next Period

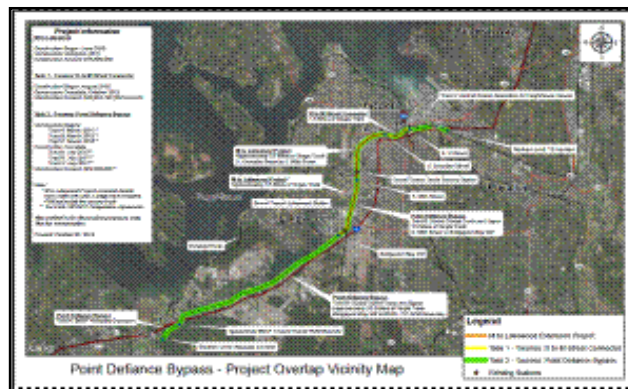
- Initiate alternative analysis to evaluate potential parking transit, pedestrian, and bicycle improvements to improve rider access.
- Identify potential parking, pedestrian, bicycle and transit improvements for evaluation.
- Evaluate and compare access improvements alternatives; obtain feedback from stakeholders.

Closely Monitored Issues

- None identified at this time.

Scope

Sound Transit is administering the construction of WSDOT Point Defiance Bypass Project, which will construct a new second track adjacent to Sound Transit's existing main line between South Tacoma (South 66th St. Bridge) and Lakewood (Bridgeport Way) and install new rails, ties, ballast and signaling and PTC systems on Sound Transit's existing track between Lakewood and Nisqually.



Point Defiance Bypass—Project Overlay Vicinity Map

Schedule

	Start	Finish
Prelim. Engineering	N/A	N/A
Final Design	Jul 2013	May 2014
Construction	Jun 2014	Jul 2017

Scope/Schedule/Budget Variance

None to report this period.

Major Contracts (\$s in thousands)

Vendor	Amount	Scope
HNTB	\$8,867	CMC
Stacy and Witbeck, Inc.	\$57,386	CON
Voestalpine Nortrak, Inc.	\$1,306	Track Procurement

Project Cost (\$s in thousands)

Phase	Project Budget	Commitment to Date	Incurred to Date
Administration	\$ 3,201	\$ 2,014	\$ 2,034
Preliminary Engineering	\$ -	\$ -	\$ -
Final Design	\$ 200	\$ 103	\$ 103
Third Party Agreements	\$ -	\$ -	\$ -
ROW Acquisition and Permits	\$ 400	\$ 55	\$ 51
Construction	\$ 69,623	\$ 59,556	\$ 54,531
Construction Services	\$ 10,246	\$ 8,874	\$ 5,034
Project Total	\$ 83,670	\$ 70,602	\$ 61,753

Key Project Activities

Current Period

- Worked to complete track work from 66th Street to Nisqually Junction.
- Continued bridge work.
- Continued to build, wire, and test signal bungalows.
- Installed conduit.
- Installed permanent fencing.
- Constructed ecology block wall.

Next Period

- Complete installation of signal foundations.
- Complete bridge work.
- Ongoing work to complete ditches from Bridgeport south.
- Prepare for train speed, signal, and crossings testing.
- Completion of signal commissioning and acceptance milestones.

Closely Monitored Issues

- Project designed by the Washington State Department of Transportation is funded through an ARRA grant made available by the FRA. Work for this project must be completed in March 2017 in order to leverage all available funding.
- Third-party fiber optic relocation work is on-going and requires coordination between contractors.

Sounder Commuter Rail Positive Train Control

Scope

Positive Train Control (PTC) systems are integrated command, control, communications, and information systems for controlling train movements. The systems improve railroad safety by significantly reducing the probability of collisions between trains, casualties to railway workers, and over-speed accidents.

Congress acted to extend the deadline for implementing PTC to December 2018.



Improving safety along the Tacoma-to-Lakewood corridor

Schedule

	Start	Finish
Prelim. Engineering	N/A	N/A
Final Design	Jul 2013	May 2014
Construction	Jun 2014	Jul 2017

Scope/Schedule/Budget Variance

None to report this period.

Major Contracts (\$s in thousands)

Vendor	Amount	Scope
Xorail, Inc.	\$34,923	Design/System install
LTK Eng. Svcs.	\$2,287	CM/Eng. Services

Project Cost (\$s in thousands)

Phase	Project Budget	Commitment to Date	Incurred to Date
Administration	\$ 2,238	\$ 1,382	\$ 1,386
Preliminary Engineering	\$ -	\$ -	\$ -
Final Design	\$ 279	\$ 226	\$ 226
Third Party Agreements	\$ 4,267	\$ 3,900	\$ 2,510
ROW Acquisition and Permits	\$ -	\$ -	\$ -
Construction	\$ 40,484	\$ 36,123	\$ 33,152
Construction Services	\$ 4,062	\$ 2,287	\$ 752
Contingency	\$ 1,725	\$ -	\$ -
Project Total	\$ 53,055	\$ 43,918	\$ 38,026

Key Project Activities

Current Period

- Continued testing with BNSF on Scenic Sub-division.
- Worked with Tacoma Rail on scope of work for PTC testing on Tacoma Rail equipment.

Next Period

- Schedule meeting with BNSF on finalizing scope of testing and start of service.
- Sounder Northline first run of PTC in revenue service.

Closely Monitored Issues

- FRA review and approval of documents.
- BNSF will likely not activate their PTC system on the Seattle and Lakewood sub-divisions until Spring/Summer 2017. Therefore, Sound Transit's system integration activities to be performed by ST's contractor, Xo-rail will be on hold until that time.

Sounder Commuter Rail Puyallup Station Improvements

Scope

This project is currently undertaking a NEPA/SEPA environmental review and preliminary engineering for access improvements identified through the Access and Demand Study. ST Board identified improvements including a new parking garage at the Puyallup Station, additional parking facilities, station area pedestrian access improvements, bicycle lane or path improvements near the station, secure bicycle storage, and station area traffic improvements.

The project scope for Final Design will be determined with the concurrence of community and municipal stakeholders, following completion of conceptual and preliminary engineering.



Improving access to Puyallup Station

Schedule

	Start	Finish
Prelim. Engineering	Jun 2013	Mid 2017
D/B Procurement	2017	2019
Final Design	2019	2019
Construction	2019	2021

Scope/Schedule/Budget Variance

None to report this period.

Major Contracts (\$s in thousands)

Vendor	Amount	Scope
Parametrix	\$2,233	CE/PE

Project Cost (\$s in thousands)

Phase	Project Budget	Commitment to Date	Incurred to Date
Administration	\$ 1,223	\$ 559	\$ 566
Preliminary Engineering	\$ 2,996	\$ 2,528	\$ 1,568
Final Design	\$ -	\$ -	\$ -
Third Party Agreements	\$ 105	\$ -	\$ -
ROW Acquisition and Permits	\$ 6,555	\$ 535	\$ 191
Construction	\$ -	\$ -	\$ -
Construction Services	\$ 130	\$ -	\$ -
Project Total	\$ 11,009	\$ 3,622	\$ 2,325

Key Project Activities

Current Period

- Continued preliminary engineering.
- Continued with negotiation offers for parcel owners for relocation and acquisition.

Next Period

- Begin design-build RFP documents.
- Continue negotiation offers to parcel owners for relocation and acquisition.

Closely Monitored Issues

- None identified at this time.

Sounder Commuter Rail Sounder Maintenance Base

Scope

Final planning and analysis. Environmental clearance and preliminary engineering for yard and shop operations and maintenance facilities to support expanded Sounder services. Preliminary project development activities (final planning, revised cost estimating, and preliminary siting studies)



Amtrak currently provides Sounder vehicle maintenance

Schedule

Schedule	Start	Finish
Prelim. Engineering	2016	TBD
Final Design	TBD	TBD
Construction	2018	2023

Scope/Schedule/Budget Variance

None to report this period.

Project Cost (\$s in thousands)

Phase	Project Budget	Commitment to Date	Incurred to Date
Administration	\$ 860	\$ 535	\$ 531
Preliminary Engineering	\$ 5,116	\$ 2,149	\$ 1,617
Final Design	\$ -	\$ -	\$ -
Third Party Agreements	\$ -	\$ -	\$ -
ROW Acquisition and Permits	\$ 865	\$ 92	\$ 66
Construction	\$ -	\$ -	\$ -
Construction Services	\$ -	\$ -	\$ -
Project Total	\$ 6,841	\$ 2,776	\$ 2,214

Major Contracts (\$s in thousands)

Vendor	Amount	Scope
Parsons Brinckerhoff	\$2,300	PE/ED

Key Project Activities

Current Period

- Issued an offer to the property owner of key private parcel with counter offer under Real Property review.
- Held coordination meeting with City of Lakewood.
- Issued recommendation to senior and executive management on a design-build project delivery method for the project.

Next Period

- Work with consultant to develop a Sounder Operations Plan that will provide information for the design development of the Sounder Maintenance Base for existing and future maintenance needs.
- Obtain approval for project delivery method.

Closely Monitored Issues

- Moderate noise and traffic impacts documented in the environmental analysis have been the subject of comments from the City of Lakewood.

Scope

Purchase of four additional commuter rail easements from BNSF for expanding service between Seattle and Lakewood. A number of track and signal improvements that are needed between Seattle and Tacoma to accommodate additional service will be funded by the project. One of the four additional round trips has commenced, timing of the other three is dependent on completing environmental work and ridership demands.

BNSF is currently completing design of the improvements and intends to incrementally complete construction as additional service is added. Additional round trips are planned for 2016 and 2017.



Additional morning and evening service between Seattle and Lakewood

Schedule

	Start	Finish
Prelim. Engineering	Oct 2010	Mar 2012
Final Design	Aug 2011	Spring 2018
Construction	Spring 2018	Fall 2018

Scope/Schedule/Budget Variance

None to report this period.

Major Contracts (\$s in thousands)

Vendor	Amount	Scope
ESA Adolfson	\$416	PE

Project Cost (\$s in thousands)

Phase	Project Budget	Commitment to Date	Incurred to Date
Administration	\$ 2,250	\$ 1,164	\$ 1,166
Preliminary Engineering	\$ 707	\$ 479	\$ 479
Final Design	\$ 700	\$ 176	\$ 160
Third Party Agreements	\$ 300	\$ 71	\$ 4
ROW Acquisition and Permits	\$ 186,485	\$ 185,211	\$ 185,191
Construction	\$ 11,226	\$ 7,439	\$ 7,421
Construction Services	\$ 300	\$ -	\$ -
Project Total	\$ 201,968	\$ 194,540	\$ 194,421

Key Project Activities

Current Period

- Reviewed consultant's responses to comments on draft culvert project feasibility study with King County.
- Determined and reached concurrence on the preferred option for the project.
- Developed consultant's preliminary design scope of work.
- Received extension from the U.S. Army of Corps of Engineers to complete the fish passage culvert project.

Next Period

- Begin preliminary engineering design.
- Draft the construction and maintenance agreement for King County to construct the fish passage culvert project.

Closely Monitored Issues

- Implementation of the fish passage culvert mitigation project. Mitigation project must be constructed by April 2018.

Sounder Commuter Rail Sounder Yard Expansion

Scope

The Sounder Yard Expansion project includes design and construction of a third storage track and civil improvements to accommodate seven Sounder train sets at the Sounder layover facility, Century Yard in Lakewood.

This additional storage capacity is necessary when additional Sounder South trains, approved in ST2, begin service between Tacoma and Seattle in 2016 in advance of completion of the Sounder Maintenance Base project.



Sounder Yard Expansion will increase storage capacity for Sounder 7th train set

Schedule

	Start	Finish
Prelim. Engineering	Jul 2013	Jun 2014
Final Design	Jun 2014	Sep 2015
Construction	Feb 2016	Jun 2017

Scope/Schedule/Budget Variance

None to report this period.

Project Cost (\$s in thousands)

Phase	Project Budget	Commitment to Date	Incurred to Date
Administration	\$ 1,200	\$ 868	\$ 883
Preliminary Engineering	\$ 2,150	\$ 1,779	\$ 1,208
Final Design	\$ -	\$ -	\$ -
Third Party Agreements	\$ -	\$ -	\$ -
ROW Acquisition and Permits	\$ 400	\$ 245	\$ 185
Construction	\$ 15,400	\$ 12,112	\$ 10,100
Construction Services	\$ 1,400	\$ 1,182	\$ 623
Project Total	\$ 20,550	\$ 16,186	\$ 12,999

Major Contracts (\$s in thousands)

Vendor	Amount	Scope
Parsons Brinkerhoff	\$1,694	PE/DB
HNTB	\$1,182	CMC
Shimmick Construction	\$12,005	D/CON

Key Project Activities

Current Period

- Continued installation of the storage track between the North and South turnouts.
- Poured equipment pads for all wayside power units, set equipment on the concrete compressor slab, and continued installation of catenary cables and lighting.

Next Period

- Completion of underground utilities and yard trackwork.
- Begin yard paving.
- Procure and deliver prefabricated storage building.

Closely Monitored Issues

- None identified at this time.

Sounder Commuter Rail Sumner Station Improvements

Scope

This project is currently undertaking NEPA/SEPA environmental review and preliminary engineering for access improvements identified through the Access and Demand Study. ST Board identified improvements including new parking garage at the Sumner Station, station area pedestrian access improvements, secure bicycle storage at the station and station area traffic improvements.

The project scope for Final Design will be determined with the concurrence of community and municipal stakeholders, following completion of conceptual and preliminary engineering.



Improving access to Sumner Station

Schedule

	Start	Finish
Prelim. Engineering	Apr 2013	2017
D/B Procurement	2017	218
Final Design	2018	2019
Construction	2019	2021

Scope/Schedule/Budget Variance

None to report this period.

Project Cost (\$s in thousands)

Phase	Project Budget	Commitment to Date	Incurred to Date
Administration	\$ 762	\$ 558	\$ 565
Preliminary Engineering	\$ 2,685	\$ 2,558	\$ 1,586
Final Design	\$ -	\$ -	\$ -
Third Party Agreements	\$ -	\$ -	\$ -
ROW Acquisition and Permits	\$ 2,912	\$ 2,799	\$ 2,709
Construction	\$ 113	\$ 97	\$ 97
Construction Services	\$ -	\$ -	\$ -
Project Total	\$ 6,472	\$ 6,012	\$ 4,957

Major Contracts (\$s in thousands)

Vendor	Amount	Scope
Parametrix	\$2,233	CE/PE

Key Project Activities

Current Period

- Continued preliminary engineering.

Next Period

- Begin design-build RFP documents.
- Receive authorization for property acquisition.

Closely Monitored Issues

- Sound Transit is planning to make a financial contribution to the city's SR 410 and Traffic Avenue interchange project (SR 410 Interchange Project) tied to pedestrian, bicycle, and transit access to the station, if other funding for the interchange project can be identified, consistent with the ST2 cost estimate.

Sounder Commuter Rail Tacoma Trestle Track and Signal

Scope

Sound Transit is replacing the aging wooden single-track trestle along the rail corridor between East “C” Street with a new, concrete double-track bridge to increase rail capacity for additional Sounder and Amtrak trains and improve reliability of passenger services.



Project will replace existing Tacoma Trestle

Schedule

	Start	Finish
Prelim. Engineering	Aug 2013	Oct 2014
Final Design	Nov 2014	Nov 2015
Construction	Mar 2016	May 2018

Scope/Schedule/Budget Variance

None reported during this period.

Major Contracts (\$s in thousands)

Vendor	Amount	Scope
David Evans & Associates	\$15,713	PE/ED/FD
HNTB	\$4,926	CMC
Flatiron west, Inc.	\$57,862	CON
Voestalpine Nortrak, Inc.	\$899	Track procurement

Project Cost (\$s in thousands)

Phase	Project Budget	Commitment to Date	Incurred to Date
Administration	\$ 8,094	\$ 2,886	\$ 2,920
Preliminary Engineering	\$ 4,062	\$ 4,062	\$ 4,062
Final Design	\$ 15,198	\$ 12,342	\$ 9,518
Third Party Agreements	\$ 1,781	\$ 682	\$ 434
ROW Acquisition and Permits	\$ 10,061	\$ 6,663	\$ 6,517
Construction	\$ 114,288	\$ 79,848	\$ 30,235
Construction Services	\$ 7,581	\$ 4,926	\$ 1,674
Project Total	\$ 161,065	\$ 111,409	\$ 55,360

Key Project Activities

Current Period

- Continued the Phase 1 pile driving and construction for the new south bridge.
- Transmitted the “L” street crossover final design package for review and comments.
- Coordinated relocation of Tacoma Power’s transmission line.

Next Period

- Construction and installation of the “G” street bridge.
- Transmit Section 106 cultural historical resources report for ST, FTA, and WSDOT of Archaeological, Historic and Preservation Office for review and comment.
- Demolition of the existing wooden trestle.

Closely Monitored Issues

- Coordination with WSDOT on the design integration of the platform extensions to the Trestle design package and signal design integration of the ST Tacoma Trestle Project and WSDOT Point Defiance Bypass Project.