

Start – Sound Transit Art Program

Guide to art | Link light rail

Downtown Transit Tunnel/DSTT

- Lynnwood Link opening 2023
- Northgate (opening 2021)
- Roosevelt (opening 2021)
- U District (opening 2021)
- **University of Washington** 1
- **Capitol Hill** 2 3
- Westlake
- **University Street**
- **Pioneer Square**
- **Intl District/Chinatown**
- East Link opening 2023
- **Stadium**
- **Operations and Maintenance Facility** 4 5 6
- **SODO** 7
- **Beacon Hill** 8 9 10 11
- **Mount Baker** 12 13 14 15
- **Columbia City** 16 17 18 19 20
- **Othello** 21 22 23 24
- **Rainier Beach** 25 26 27 28 29
- **Tukwila Intl Blvd** 30 31 32
- **SeaTac/Airport** 33 34 35
- **Angle Lake (opening late 2016)** 36 37



Subterranium, Leo Saul Berk

Start on Link light rail

Sound Transit’s art collection creates welcoming and engaging environments at stations and transit facilities throughout Central Puget Sound. Artists with a diverse range of style, scale and perspective create positive experiences for riders and visitors.

All works and images contained in this brochure are protected by the artists' copyright; all rights reserved.



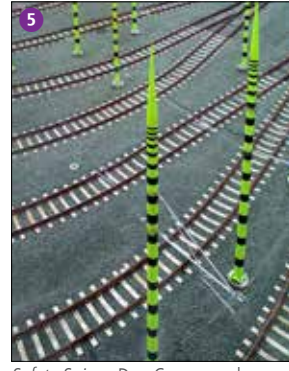
Jet Kiss, Mike Ross



Crossed Pinkies, Ellen Forney



R-rail, Western Neon



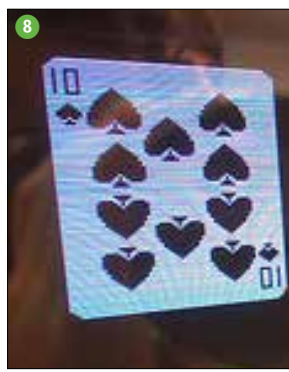
Safety Spires, Dan Corson and Norie Sato



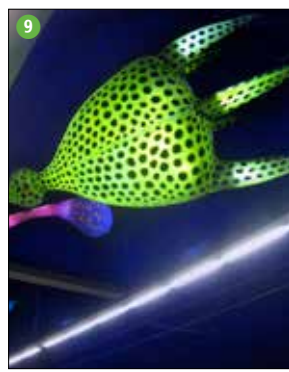
Eat, Drink and Be Merry, Ries Niemi



Made in USA, Michael Davis



What the Naked Molerat Saw, Bill Bell



Space Forms, Dan Corson



Portals, Dan Corson



Common Threads-Community Patterns, Carl Smool



Rain, Steam and Speed, Guy Kemper



Sky Within, Sheila Klein



How the Crow Created the World with Lightning, Barbara Earl Thomas



Cultural Storyboards, Peter Reiquam, Lead Artist



Garden Windows, Juan Alonso



Pride, Norie Sato



Global Garden Shovel, Victoria Fuller



A Relic in the Garden, Gale McCall



Sound of Light, Richard C. Elliott



Rainier Valley Haiku, Roger Shimomura



Stormwater Project, Brian Goldbloom



Come Dance With Me, Augusta Asberry



Reeds and Bangles, Norie Sato and Dan Corson



Parable, Buster Simpson



Dragonfly, Darlene Nguyen-Ely



Increment, Eugene Parnell



Pinwheel mosaic, Mauricio Robalino



Blue Lights Over Duwamish, Norie Sato and Dan Corson



A Drop of Sustenance, Tad Savinar



Soundings, Clark Wiegman



Shimmering Shadowlines, Norie Sato and Dan Corson



Flying Sails, Werner Klotz



Restless, Christian Moeller



Celestial Navigation, Fernanda D'Agostino



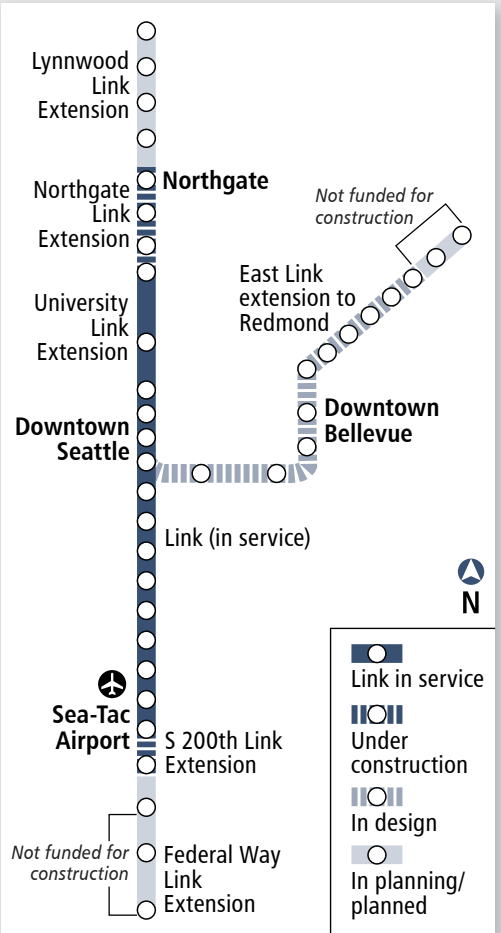
Cloud, Laura Haddad



Immerse, Jill Anholt

Pictograms

Pictorial symbols, like this dragon, help identify Link stations. For more information, see "Stellar Connections" on reverse side.



Expanding Link north, east and south

In 2008 voters approved the expansion of light rail north to Lynnwood, east to Overlake in Redmond and south past Sea-Tac Airport to South 200th Street. The expansion adds miles of light rail, serving many new stations and communities.

Columbia City Station

MLK and Edmunds Street, Seattle

Juan Alonson

Garden Windows – Organic, plant-like forms and roots, all start with a central spine that branches out in different directions. The windows subtly invite riders to “branch out” and explore.

16 SE Plaza, Edmunds Street

Norie Sato

Pride – Stone, brick and bronze lions from many cultures guard the entrance of the station’s south plaza, ensuring a safe, welcoming journey for patrons. Included is a hand-carved brick lion made in collaboration with master brick carver Mara Smith.

17 SE Plaza, Edmunds Street

Victoria Fuller

Global Garden Showel – Gardening and cultivation are universal. Plants, fruits and vegetables from around-the-world intervene to form a 36-foot-long sculpture. Plants, fruits and vegetables symbolizing new beginnings and new possibilities.

18 NW Plaza, Alaska Street

Gale McCall

A Relic in the Garden – Through bronze magnifying glasses and baskets, station visitors are invited to explore a neighborhood of converging cultures and to gather ideas and information about the world.

19 Platform

Richard C. Elliott

Sound of Light – Using sequential panels of primary colors and reflective geometric patterns, the artist created a composition that makes up an ever-changing visual symphony.

20 MLK and Hudson Street

Mount Baker Station
Rainier Avenue and McClellan Street, Seattle

Guy Kemper
Rain, Steam and Speed and **Seattle Sunrise** – Vibrant blown glass colors are a counterpoint to Seattle’s grey and blue skies for both train riders and the surrounding Mount Baker neighborhood.

12 Platform level

Sheila Klein
Sky Within – The underbelly of the train guideway becomes a 400-foot-long community plaza with six chandeliers made of repurposed cobra-head street lights. The lights subtly shift colors throughout the evening onto a ceiling painted in urban camouflage.

13 Plaza level

Barbara Earl Thomas
How the Crow Created the World with Lightning – Considering a neighborhood filled with churches, the constant presence of crows and the electrical station that her artwork would shield, the artist conceived a narrative in which crows harnessed lightning into their beaks, from which flowed a landscape of mountains, trees and water.

14 MLK and Walden Street

Peter Reiquam, Lead Artist
Cultural Storyboards – Lead artist Peter Reiquam worked with five artists from diverse backgrounds to translate their drawings addressing culture, community, change and journey into laser-cut metal banners. (Contributing artists: Joe Feddersen, James Jaxxa, Chris Silva, Dionne Haroutunian, Sultan Mohammed)

15 MLK between Henderson and Walden Streets

Rainier Beach Station
Lander Street and Busway, Seattle

Michael Davis
Made in USA – The station’s industrial surroundings are reflected in a gateway comprised of an L-square and carpenter’s pencil accompanied by custom I-beam benches.

7 Plaza

Beacon Hill Station
at Beacon Avenue and Lander Street, Seattle

Bill Bell
What the Naked Molerat Saw – Riders approaching the Beacon Hill platform can see a flash of playing cards through the train windows and decide whether they have a good hand that day. Random images change throughout the day.

8 Approaching tunnel platform

Dan Corson
Space Forms – Brightly colored translucent sculptures suspended over the waiting area ask the questions: Are these forms giant floating creatures in space? Microscopic creatures floating under a microscope?

9 Platforms

Portals – The questioning of scale and origin continues in a wall of portals with images from the Hubble telescope, a microscope and the deep sea.

10 Platform concourse

Carl Smool
Common Threads-Community Patterns – Textile patterns from the cultures and heritage of Beacon Hill residents appear in etched “carpets” in the plaza’s granite walkway, announcing the station entrance. An Aztec-patterned vent screen on the north wall is dedicated to El Centro de La Raza, which provided its title: *The Mexica Journey... A Beacon: Unidad, Resistencia and Hope.*

11 Plaza

Tukwila/International Blvd Station
International Blvd and S 154th Street, Tukwila

DSTT
Downtown Seattle Transit Tunnel, Seattle

The DSTT was built in 1989 by King County Metro for easy bus access to Seattle’s downtown core, and for the region’s future light rail system. Each station’s unique look results from 25 artists collaborating with the design and construction teams.

Over 30 artworks are installed in and around the tunnel stations.

Operations and Maintenance Facility
Airport Way and Forest Street, Seattle

Mike Ross
Jet Kiss – Ross transformed two retired Navy jets into organic forms that almost meet for a kiss above the station platform.

Ellen Forney
Crossed Pinkies and Walking Fingers – The station’s large entry murals are an outgrowth from a series of Forney’s paintings that feature hands in a variety of gestures, using forms that are spare yet graphically powerful.

Dan Corson and Norie Sato
Safety Spires – Taking advantage of the need for over 100 power poles at the maintenance facility, the artists brought this system element to the forefront through color and sculptural attachments, transforming the poles into a collection of horsetail reeds.

5 Train yard

Capitol Hill
100 Broadway East, Seattle



Ries Niemi
Eat, Drink and Be Merry – A trio of tensile steel sculptures was inspired by shopping, dining and entertainment in the downtown retail core. Because of University Link construction, the artwork was relocated to the Link Operations and Maintenance Facility in SoDo.

Christian Moeller
Restless – A series of red propellers rotate horizontally in the ceiling of the pedestrian bridge creating an abstract sculpture to keep birds — both revered and reviled by the flight-centric Airport — at bay.

6 Forest Street and Airport Way

Othello Station
MLK and Othello Street, Seattle

Roger Shimomura
Rainier Valley Haiku – Is our culture becoming a melting pot or a tossed salad? Is one condition preferable to the other? The artist asks these questions in a 13-foot-tall sculpture of stacked objects that stimulate public interpretations about immigrant culture in America.

Brian Goldboom
Someater Project – Inspired by stonework included in Japan’s Osaka Castle, eight artist-designed granite stormwater catch basins are integrated both physically and visually into the station. Each piece includes a unique design of water channels interlaced with everyday objects.

Augusta Asberry
Come Dance With Me – These lyrical and flowing figures grew out of the artist’s passion for dress designing coupled with an interest in African art. Viewers are invited to feel the movement of the dancers and listen for the silent beat guiding the flow of their motion. Artist Keith Haynes completed the painting portion after Asberry’s death.

Mauro Robalino
Flora, Fishmobile Crossing, Pinwheel mosaic and **gate** – Large glass mosaics inspired by the artist’s Ecuadorian textile background adorn the substation and on the bridge, creating a light show that plays off the Duwamish River trigger a glowing blue line of lights

Blue Lights Over Duwamish – Trains crossing the Duwamish River trigger a glowing blue line of lights on the bridge, creating a light show that plays off the bridge and the water below.

North Sato and Dan Corson
Reeds and Bangles – The tops of the Overhead Contact System poles along the MLK Corridor resemble reeds bending in an eastern breeze. Poles on either side of each station are wrapped with metal “bangles,” visually indicating the approaching station.

MLK between Henderson and Walden Streets
Christian French
Stellar Connectors – Pictograms unique to each station help riders especially those who may not read English, easily identify Link stations. Images for the initial Link line represent a constellation made up of connecting points of interest from the station’s surrounding community. The pictograms are found on station signs, maps and rider materials.

All stations

Rainier Beach Station
MLK and Henderson Street, Seattle

Buster Simpson
Parable – Set in the orchard-like plaza landscaping, the still-life sculpture resembles a bowl of pears and wicking balls, morphed into one. Parable provides an allegorical reference to the ordered urban landscape and the dynamically changing city.

Darlene Nguyen-Ely
Dragonfly – Nguyen-Ely drew inspiration from the station’s architectural elements to create a figure caught in flight. The large, winged sculpture conveys flight imagery, wind, architecture and the artist’s own immigrant experiences.

Eugene Parnell
Increment – Four bronze columns line the station platform. Their feature reliefs depict height comparisons and measuring systems from around the world. The sculptures invite the public to interact, see how they “measure up,” and to consider the use of information to service building, which evolve to a metal pattern on an adjacent gate.

Clark Wiegman
Soundings – An abstracted hazelnut was inspired by the Duwamish name for Tukwila, Kap’uxac, which means “place of hazelnuts.” A blue ribbon of light along the neck of the sculpture traces the pattern of the Duwamish River as it passes through the City of Tukwila.

31 Plaza
30 Platform, suspended over Mezzanine
33 Platform and Mezzanine

International Blvd Station
International Blvd and S 176th Street, Seatac

Werner Klotz
Flying Sails – A pair of 35-foot-high stainless steel abstract sails hang from the platform ceiling to the mezzanine level between the escalators. Wind-activated panels on the northern sail contain the names of Northwest native tribes; the southern sail names cites on the same latitude or longitude as Seattle.

Christina Moeller
Restless – A series of red propellers rotate horizontally in the ceiling of the pedestrian bridge creating an abstract sculpture to keep birds — both revered and reviled by the flight-centric Airport — at bay.

Fernanda D’Agostino
Celestial Navigation – An 18-foot-high glass and metal sculpture, inspired by a navigational quadrant, serves as a projection screen for an artist-created view about the cultures residing in the Seatac area and studies of flight. The plaza is enhanced with terrazzo and bronze inlay circles.

Jill Anhoit
Immerse—appears to hang weightlessly in the portal of the plaza’s grand staircase, with the sculpture’s four delicate arcs transferring light into the parking area below.

37 Plaza
36 Platform
35 Plaza

Angle Lake
19863 28TH Ave S, Seatac

Laura Haddad
Cloud—Wind activates thousands of individual discs while sunlight makes them shimmer and glow. The Cloud serves as a sculptural barometer of local weather.

Christian French
Stellar Connectors – Pictograms unique to each station help riders especially those who may not read English, easily identify Link stations. Images for the initial Link line represent a constellation made up of connecting points of interest from the station’s surrounding community. The pictograms are found on station signs, maps and rider materials.

37 Plaza
36 Platform
35 Plaza

34 International Blvd pedestrian bridge
33 Platform and Mezzanine

30 Platform, suspended over Mezzanine
33 Platform and Mezzanine

30 Platform, suspended over Mezzanine
33 Platform and Mezzanine

30 Platform, suspended over Mezzanine
33 Platform and Mezzanine

34 International Blvd pedestrian bridge

University of Washington
3796 Montlake Boulevard East, Seattle

Leo Saul Berk
Subterranium —By cutting geology inspired hatch-patterns into the walls and ceiling of the 110-foot deep station, Berk created the experience of an underground planetarium.

1 Between mezzanines



Start – Sound Transit Art Program

Start – Sound Transit Art Program
Creating a sense of place

The Puget Sound’s Link light rail system features artwork by national artists, many who live in the Pacific Northwest, as well as newcomers to public art. Their work represents a diverse range of style, scale and perspective that creates engaging environments for riders and visitors.

Enjoy these artworks as points of interest along your Link light rail journey. Learn more at soundtransit.org/STart.

All works and images contained in this brochure are protected by the artists’ copyright; all rights reserved.



19863 28TH Ave S, Seatac

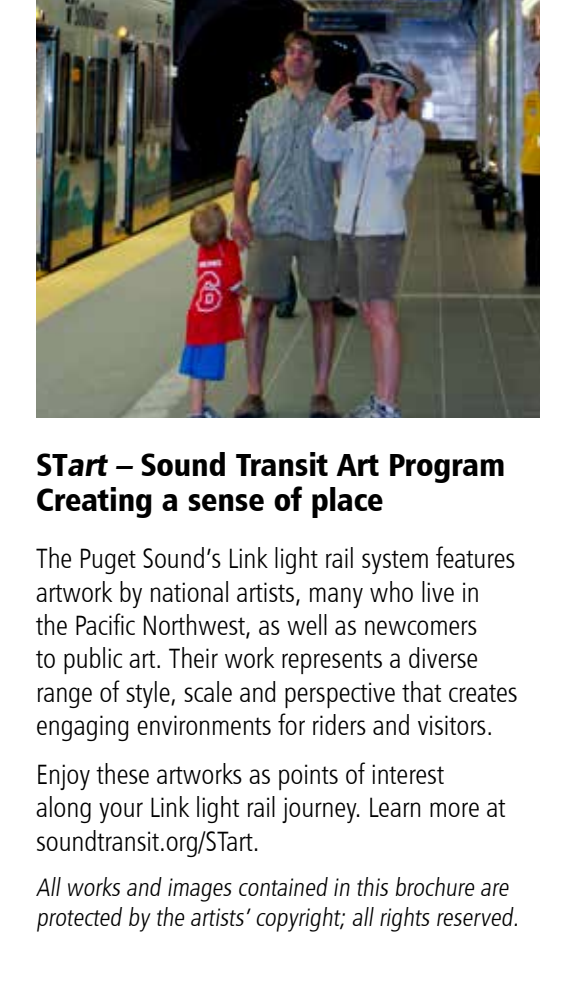
Start – Sound Transit Art Program

Start – Sound Transit Art Program
Creating a sense of place

The Puget Sound’s Link light rail system features artwork by national artists, many who live in the Pacific Northwest, as well as newcomers to public art. Their work represents a diverse range of style, scale and perspective that creates engaging environments for riders and visitors.

Enjoy these artworks as points of interest along your Link light rail journey. Learn more at soundtransit.org/STart.

All works and images contained in this brochure are protected by the artists’ copyright; all rights reserved.



19863 28TH Ave S, Seatac

