

Progress Report Sounder Program

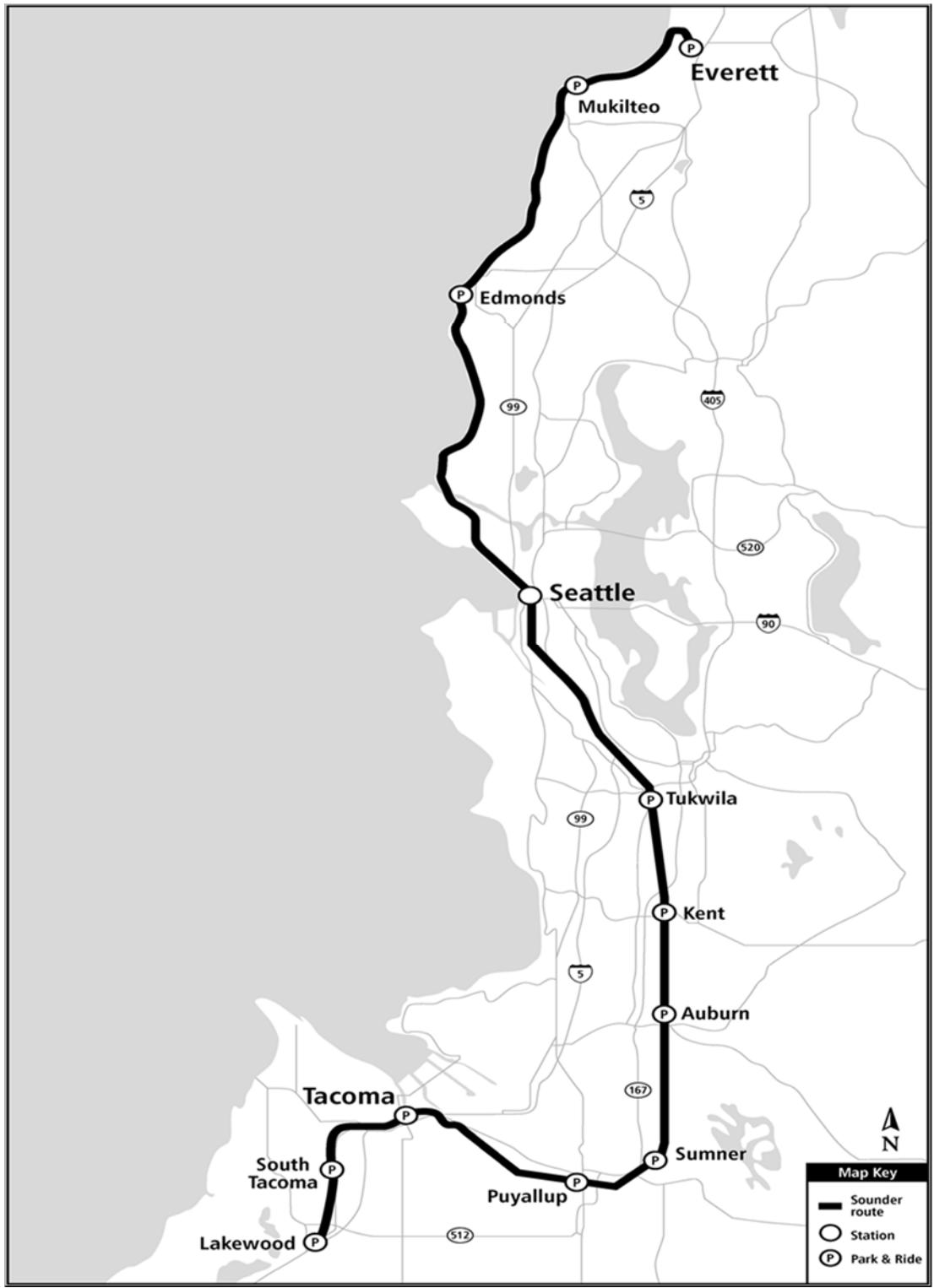


Tacoma Trestle Track & Signal Ribbon Cutting

December | 2017



Prepared by Project Control | Design, Engineering & Construction Management



Sounder provides commuter rail service between Everett and Lakewood

Projects

Below is a summary description for each active project under the Sounder Commuter Rail Capital Program. Project status information can be found on the following projects' pages.

Auburn Station Access Improvements: Project includes alternatives identification, screening, environmental documentation, design and construction of station access improvements at or around Auburn Station. The purpose of the project is to improve access to the existing Auburn Sounder station for Sounder riders, bicyclists, bus riders, and drivers.

Kent Station Access Improvements: Project includes alternatives identification, screening, environmental documentation, design and construction of station access improvements at or around Kent Station. The purpose of the project is to improve access to the existing Kent Sounder station for Sounder riders, bicyclists, bus riders, and drivers.

Mukilteo Station, South Platform: Full build-out of this station included construction of a second platform, overhead pedestrian bridge, elevators, stair tower, and passenger shelters. Sounder service at the south platform began on April 11, 2016. The project page for this project has been removed. Only follow-on work remains. Cost status can be found on the Program Cost Summary table.

Point Defiance Bypass: Sound Transit administered the construction of the Point Defiance Bypass Track & Signal contract, which constructed a new second track adjacent to Sound Transit's existing main line between South Tacoma (66th Street Bridge) and Lakewood (Bridgeport Way) and installed new rails, ties, and ballast on Sound Transit's existing track between Lakewood and Nisqually with associated signal and PTC safety systems. The work is being funded by a FRA-administered federal grant to WSDOT for improvements along the Pacific Northwest High Speed Intercity Passenger Rail corridor. Construction was completed 3Q 2017, and the track is in service. The project page for this project has been removed.

Positive Train Control: Federal regulations require all passenger train routes be equipped with PTC systems before January 2019. This necessitated upgrades to Sounder wayside signals, communications, and information management systems along with additional on-board equipment. BNSF has installed wayside elements within the Everett-to-Tacoma corridor. This project includes wayside elements along the Tacoma-to-Lakewood corridor and modifications of locomotives and cab cars for installation of on-board equipment. BNSF dispatches all Sounder trains and operates the back office server (BOS) portion of Sound Transit's PTC system. Sound Transit will implement PTC operations as early as FRA approvals of its Revenue Service Demonstration Plan and completion of testing with BNSF will allow.

Puyallup Station Access Improvements: Project includes environmental documentation, design and construction of station access improvements at or around Puyallup Station. The purpose of this project is to accommodate and encourage future demand for Sounder ridership in an economically efficient and environmentally sustainable manner.

Sounder Maintenance Base: Sound Transit will construct a new railroad maintenance facility to service Sounder commuter trains at its expanded Century Yard facility in the City of Lakewood. The building will contain maintenance bays, materials storage areas, offices, and facilities for employees.

Sounder South Expanded Service: Sound Transit purchased four additional round trip easements from BNSF to expand service between Seattle and Tacoma/Lakewood. Sound Transit is responsible for completing environmental documentation, permitting, and mitigation associated with BNSF construction activities necessary to support those additional round trips.

Sounder Yard Expansion: Increased Sounder service in the Everett-to-Lakewood corridor will require additional train sets and a location to store the added trains overnight. The Century Yard facility was expanded with a third storage track to accommodate 8-car trains, the new train sets, and permanent crew reporting facilities, eliminating the need to lease space for train and engine crews.

Projects continued...

Sumner Station Access Improvements: Project includes environmental documentation, design, and construction of station access improvements at or around Sumner Sounder Station. The purpose of this project is to accommodate and encourage future demands for Sounder ridership in an economically efficient and environmentally sustainable manner.

Tukwila Station: Construction of a permanent station and platforms to replace the temporary wooden structure has been completed. This project included the construction of an expanded parking lot, bus loop with passenger shelters, bicycle storage area, and new concrete platforms with improved passenger shelters, all sited to accommodate BNSF's new third mainline, now under construction. The project page for this project has been removed. Follow-on work has been completed. Cost status can be found on the Program Cost Summary table.

Tacoma Trestle Track & Signal: Replacement of existing wooden trestle that has reached the end of its functional service life with a double track concrete structure. This project will improve overall safety, capacity, and speed in this section of the Sounder Tacoma-to-Lakewood corridor.

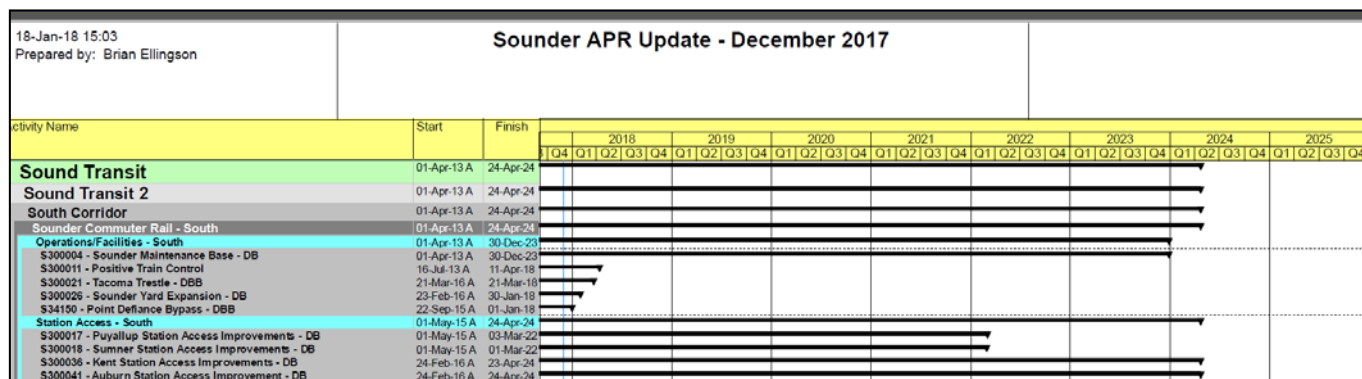
Program Cost Summary

The Program Cost Summary information by project is summarized below. The Adopted Budget reflects the budget for each project through the approved project phase, meaning that for projects approved for Final Design activities only, the project budget will be amended at some point to add budget for construction activities. Further information can be found in the following project pages. (table figure in million)

Project	Authorized Project Allocation	Commitment to Date	Incurred to Date	Forecast to Complete	Estimated Final Cost (EFC)	Adopted Allocation vs. EFC
SOUNDER MAINTENANCE BASE	\$9.0	\$3.1	\$2.7	\$5.8	\$8.9	\$0
POSITIVE TRAIN CONTROL	\$53.1	\$43.5	\$40.0	\$0.9	\$44.4	\$8.6
PUYALLUP STATION IMPROVEMENTS	\$11.0	\$4.0	\$3.5	\$7.0	\$11.0	\$0
SUMNER STATION IMPROVEMENTS	\$17.0	\$13.9	\$6.2	\$3.1	\$17.0	\$0
TACOMA TRESTLE TRACK & SIGNAL	\$161.1	\$119.5	\$113.7	\$41.6	\$161.1	\$0
SOUNDER YARD EXPANSION	\$20.6	\$16.8	\$16.0	\$2.4	\$19.2	\$1.3
PT DEFIANCE BYPASS	\$83.7	\$77.4	\$75.1	\$2.2	\$79.6	\$4.0
KENT STATION ACCESS IMPRVMTS	\$0.8	\$0.7	\$0.7	\$0.1	\$0.8	\$0
AUBURN STATION ACCESS IMPRVMT	\$0.8	\$0.6	\$0.7	\$0.2	\$0.8	\$0
MUKILTEO STATION-S PLATFORM	\$18.3	\$16.3	\$16.3	\$2.0	\$18.3	\$0
TUKWILA STATION	\$46.0	\$37.3	\$37.3	\$1.3	\$38.6	\$7.3
SOUNDER SOUTH EXPANDED SERVICE	\$202.0	\$195.1	\$194.9	\$6.9	\$202.0	\$0
Total SOUNDER	\$623.3	\$528.2	\$506.9	\$74.5	\$602.7	\$20.6

Sounder Program Schedule

Schedules for active projects are summarized below.



Construction Safety

Construction and System Safety provide systematic and comprehensive oversight, resources, and guidance to eliminate recognized hazards, promote a safety culture and achieve an integrated system of compliance and continuous improvement of safety on both construction projects and transit system elements.

Agency-led active construction contracts under the Sounder program are as follows:

- Tacoma Trestle Track & Signal Project
- Sounder Yard Expansion

During the 4th quarter of 2017 there were no reportable injuries .

Quality Assurance

Quality Assurance continues to support the Sounder program through review of design and construction documents and periodic audits of projects in design, construction, and operations.

Description	4 th Quarter 2017	Notes
Audits/Surveillances Performed	0 Audit 1 Surveillances	S-C-S300021-16-01
Audits/Surveillances Reports Issued	0 Audit 1 Surveillances	S-C-300021-17-01
Reports in Progress	1 Reports	A-RE-SND-S34150-17-01

Sound Transit Board Actions

Board motions and resolutions directly related to Sounder Program approved this period are summarized in the table.

Motion Number	Description	Date
M2017-129	Authorize the CEO to increase the contingency for the construction services contract with Flatiron West, Inc. for the Tacoma Trestle Track and Signal Project	10/26/17
M2017-138	Identifies the Preferred Alternative for the Auburn Station Access Improvements Project to advance into environmental review	11/16/17
M2017-139	Identifies the Preferred Alternative for the Kent Station Access Improvements Project to advance into environmental review	11/16/17

Third-Party Agreements

- A Service Outcomes Agreement (SOA) and a Stakeholder Agreement for investment of High-Speed Passenger Rail grant money into the Sound Transit rail corridor were executed in 2014/2015. The SOA captures Sound Transit's commitment to continued maintenance and operation of the corridor, and the Stakeholder Agreement provides funding to be applied to the completed construction on the D Street-to-M Streets and Point Defiance Bypass projects and the ongoing Tacoma Trestle project.

City of Tacoma

FTA / WA Dept. of Archeology and Historical Preservation

- Environmental MOA - Federal Transit Administration (FTA), the responsible Federal agency is providing federal financial assistance for the Tacoma Trestle Track & Signal project. The grant administrator has determined that the project is an undertaking as defined in Title 36 Code of Federal Regulation (CFR) §800.16(y), and thus is subject to review under the Section 106 of the National Historic Preservation Act (NHPA), 16 U.S.C §470 (Section 106) and its implementing regulations, 36 CFR Part 800.
- FTA issued the Section 106 MOA amendment for Sound Transit to complete additional archaeological borings, cultural historic report and make a capped contribution for Puyallup Tribe to create a cultural or art piece.

WSDOT

- Construction and Maintenance - Funding of projects on Sound Transit-owned property, including a \$29.5M contribution to the D-to-M Street Track & Signal project, and 100% funding of the Pt. Defiance Bypass project. For Tacoma Trestle, WSDOT will provide funding for Sound Transit to construct and maintain the platform extension serving Amtrak long-distance trains and other railroad and passenger improvements at Tacoma Dome Station/Freighthouse Square.
- CE and PE Cost Reimbursement - WSDOT wishes to extend the passenger platform at Tacoma Dome Station onto the bridge in order to accommodate the length of Amtrak trains that will use the station; Sound Transit will design and construct the platform extension.
- Final Design Cost Reimbursement - WSDOT is to reimburse Sound Transit for the associated design consultant services and other expenditures to complete final design of the extended platform, necessary to accommodate the longer Amtrak trains at their Tacoma Dome Station.
- Amendment No. 1 to the Reciprocal Overhead Waiver Agreement between WSDOT and Sound Transit has been executed. In this agreement, both parties agree to waive indirect costs and be reimbursed for the performance of work on specific projects of the other agency.
- A task order umbrella agreement between WSDOT and Sound Transit for Sound Transit's Services was approved by the ST Board in April 2017. This agreement allows for reimbursement of ST staff time reviewing design documents associated with WSDOT's I5-Mount Road to Thorne Lane Connector project.

Sprint

- Cost Reimbursement - Sound Transit and Sprint entered into an agreement for Sprint to temporarily relocate their facilities, then permanently relocate their facilities back onto ST's new Tacoma Trestle double-track bridge. The agreement covers expenditures for design and construction activities related to the temporary and permanent relocation.

City of Puyallup

- Term Sheet - Sound Transit and the City have reached an agreement on a Project Term Sheet. This document outlines the early understandings of both Sound Transit and the City. The term sheet will serve as the foundation for the more detailed project entitlements, in the form of a Development Agreement.

City of Sumner

- Term Sheet - Sound Transit and the City have reached an agreement on a Project Term Sheet. This document outlines the early understandings of both Sound Transit and the City. The term sheet will serve as the foundation for the more detailed project entitlements, in the form of a Conditional Use Permit.

This page intentionally left blank.

Scope

This project will consider and build upon the results of Sounder Station Access and Demand Study completed in 2012. The alternatives analysis phase of the project will evaluate parking, transit, pedestrian, and bicycle access improvements that could be made to improve rider access to the Auburn Sounder Station.

At the end of the alternative analysis phase, the ST Board will identify a preferred alternative to advance to conceptual and preliminary engineering.



Improving access to Auburn Station

Schedule

	Start	Finish
Prelim. Engineering	2016	2019
Final Design	2019	2021
Construction	2021	2023

Scope/Schedule/Budget Variance

None to report this period.

Major Contracts (\$s in thousands)

Vendor	Amount	Scope
CDM Smith Inc.	\$495	PE/CE

Project Cost Summary (\$s in thousands)

Phase	Authorized Project Allocation	Commitment to Date	Incurred to Date
Administration	\$ 207	\$ 133	\$ 129
Preliminary Engineering	\$ 574	\$ 495	\$ 420
Final Design	\$ -	\$ -	\$ -
Third Party Agreements	\$ -	\$ -	\$ -
ROW Acquisition and Permits	\$ 50	\$ -	\$ -
Construction	\$ -	\$ -	\$ -
Construction Services	\$ -	\$ -	\$ -
Project Total	\$ 831	\$ 628	\$ 549

Key Project Activities

Current Period

- Identified potential parking, pedestrian, bicycle, and transit improvements for evaluation.
- Evaluated and compared access improvement alternatives.
- Obtained preliminary feedback from stakeholders to narrow and refine alternatives.

Next Period

- Evaluate and compare top access improvement alternatives.
- Gather feedback from stakeholders to inform Sound Board identification of a preferred alternative.

Closely Monitored Issues

- Sound Transit 2 project description and associated cost assumes parking garage can be developed on ST owned property with no new ROW acquisition. Cost estimate may be low depending on site identified through alternatives analysis.
- Private developer has expressed interest in joint development of potential parking garage site.

Scope

This project will consider and build upon the results of Sounder Station Access and Demand Study completed in 2012. The alternatives analysis phase of the project will evaluate parking, transit, pedestrian, and bicycle access improvements that could be made to improve rider access to the Kent Sounder Station.

At the end of the alternatives analysis phase, the ST Board will identify a preferred alternative to advance to conceptual and preliminary engineering.



Improving access to Kent Station

Schedule

	Start	Finish
Prelim. Engineering	Oct 2016	2018
Final Design	2019	2021
Construction	2021	2023

Scope/Schedule/Budget Variance

None to report this period.

Project Cost Summary (\$s in thousands)

Phase	Authorized Project Allocation	Commitment to Date	Incurred to Date
Administration	\$ 207	\$ 196	\$ 153
Preliminary Engineering	\$ 574	\$ 495	\$ 486
Final Design	\$ -	\$ -	\$ -
Third Party Agreements	\$ -	\$ -	\$ -
ROW Acquisition and Permits	\$ 50	\$ -	\$ -
Construction	\$ -	\$ -	\$ -
Construction Services	\$ -	\$ -	\$ -
Project Total	\$ 831	\$ 691	\$ 639

Major Contracts (\$s in thousands)

Vendor	Amount	Scope
CDM Smith Inc.	\$495	PE/CE

Key Project Activities

Current Period

- Identified potential parking, pedestrian, bicycle, and transit improvements for evaluation.
- Evaluated and compared access improvement alternatives.
- Obtained preliminary feedback from stakeholders to narrow and refine alternatives.

Next Period

- Evaluate and compare top access improvement alternatives.
- Gather feedback from stakeholders to inform Sound Transit Board identification of a preferred alternative.

Closely Monitored Issues

- Sound Transit 2 project description and associated cost assumes parking garage can be developed on combination of ST owned property and limited new ROW to be acquired. Cost estimate may be low depending on site identified through alternatives analysis.

Scope

Positive Train Control (PTC) systems are integrated command, control, communications, and information systems for controlling train movements. The systems improve railroad safety by significantly reducing the probability of collisions between trains, casualties to railway workers, and over-speed accidents.

Congress acted to extend the deadline for implementing PTC to December 2018.



Improving safety along the Tacoma-to-Lakewood corridor

Schedule

	Start	Finish
Prelim. Engineering	N/A	N/A
Final Design	Jul 2013	May 2014
Operational	Jun 2014	Aug 2018

Scope/Schedule/Budget Variance

None to report this period.

Major Contracts (\$s in thousands)

Vendor	Amount	Scope
Xorail, Inc.	\$35,164	Design/System install
LTK Eng. Svcs.	\$2,287	CM/Eng. Services

Project Cost Summary (\$s in thousands)

Phase	Authorized Project Allocation	Commitment to Date	Incurred to Date
Administration	\$ 2,238	\$ 1,441	\$ 1,439
Preliminary Engineering	\$ -	\$ -	\$ -
Final Design	\$ 279	\$ 226	\$ 226
Third Party Agreements	\$ 4,267	\$ 3,900	\$ 2,510
ROW Acquisition and Permits	\$ -	\$ -	\$ -
Construction	\$ 40,484	\$ 35,950	\$ 33,240
Construction Services	\$ 4,062	\$ 2,287	\$ 759
Contingency	\$ 1,725	\$ -	\$ -
Project Total	\$ 53,055	\$ 43,804	\$ 38,174

Key Project Activities

Current Period

- Finalize alignment of Sound Transit test procedures with BNSF support of ST's PTC program.
- Wabtec remobilization for system implementation on Lakewood sub-division.

Next Period

- Conduct final PTC testing of Lakewood sub-division.
- Activate PTC on Sounder trains running on Lakewood sub-division.

Closely Monitored Issues

- FRA review and approval of documents.
- BNSF will likely not activate their PTC system on the Seattle and Lakeview sub-divisions until late Summer 2017. Therefore, Sound Transit's system integration activities to be performed by ST's contractor, Xo-rail will be on hold until that time.

Scope

This project is currently undertaking preliminary engineering for access improvements identified for the Puyallup Station through the ST Board action in August 2014. ST Board identified improvements include a new parking garage at the Puyallup Station, additional parking facilities, station area pedestrian access improvements (including a pedestrian bridge), bicycle lane or path improvements near the station, secure bicycle storage area & traffic improvements.

Project scope for Final Design will be determined with the concurrence of community and municipal stakeholders, following completion of conceptual and preliminary engineering.



Improving access to Puyallup Station

Schedule

	Start	Finish
Prelim. Engineering	Jun 2013	2018
D/B Procurement	2018	2019
Final Design	2019	2019
Construction	2019	2021

Scope/Schedule/Budget Variance

None to report this period.

Major Contracts (\$s in thousands)

Vendor	Amount	Scope
Parametrix	\$2,482	CE/PE

Project Cost Summary (\$s in thousands)

Phase	Authorized Project Allocation	Commitment to Date	Incurred to Date
Administration	\$ 1,223	\$ 842	\$ 850
Preliminary Engineering	\$ 2,996	\$ 2,541	\$ 2,053
Final Design	\$ -	\$ -	\$ -
Third Party Agreements	\$ 105	\$ -	\$ -
ROW Acquisition and Permits	\$ 6,555	\$ 812	\$ 557
Construction	\$ -	\$ -	\$ -
Construction Services	\$ 130	\$ -	\$ -
Project Total	\$ 11,009	\$ 4,195	\$ 3,460

Key Project Activities

Current Period

- Continued drafting Design Build bridging documents.
- Continued with negotiation offers for parcel owners for relocation and acquisition.

Next Period

- Continue drafting Design Build documents issued for review.
- Continue negotiations with parcel owners for relocation and acquisition.

Closely Monitored Issues

- None identified at this time.

Sounder Commuter Rail Sounder Maintenance Base



Scope

Final planning and analysis, environmental clearance and preliminary engineering for yard and shop operations and maintenance facilities to support expanded Sounder service.

Preliminary project development activities (final planning, revised cost estimating and preliminary siting studies) have been completed; environmental analysis is completed.



Amtrak currently provides Sounder vehicle maintenance

Schedule

	Start	Finish
Prelim. Engineering	Summer 2016	TBD
Final Design	TBD	TBD
Construction	2018	2023

Scope/Schedule/Budget Variance

None to report this period.

Major Contracts (\$s in thousands)

Vendor	Amount	Scope
Parsons Brinckerhoff	\$2,300	PE/ED

Project Cost Summary (\$s in thousands)

Phase	Authorized Project Allocation	Commitment to Date	Incurred to Date
Administration	\$ 860	\$ 688	\$ 689
Preliminary Engineering	\$ 5,116	\$ 2,159	\$ 1,826
Final Design	\$ -	\$ -	\$ -
Third Party Agreements	\$ -	\$ -	\$ -
ROW Acquisition and Permits	\$ 2,992	\$ 279	\$ 213
Construction	\$ -	\$ -	\$ -
Construction Services	\$ -	\$ -	\$ -
Project Total	\$ 8,968	\$ 3,126	\$ 2,728

Key Project Activities

Current Period

- Transmitted draft NEPA re-evaluation and Endangered Species Act Screening checklist for review and approval for FTA.
- Issued the Phase I environmental evaluation reports.
- Working with Real Estate and Legal on next steps to file condemnation package for ST to acquire a key private parcel.

Next Period

- Complete the conceptual design by consultant for Sound Transit review.
- Follow up with FTA on their review and approval of the NEPA Re-evaluation and Endangered Species Screening checklist.

Closely Monitored Issues

- None identified at this time.

Scope

Purchase of four additional commuter rail easements from BNSF for expanding Sounder service between Seattle and Lakewood. A number of track and signal improvements are needed between Seattle and Tacoma to accommodate additional Sounder services.

BNSF is currently underway with the construction improvements and intends to incrementally complete construction as additional service is added. Additional Sounder South Service was implemented in 2016 and two more round trips was added in September 2017.



Additional morning and evening service between Seattle and Lakewood

Schedule

	Start	Finish
Prelim. Engineering	Oct 2010	Mar 2011
Final Design	Aug 2011	Spring 2018
Construction	Spring 2018	Fall 2018

Scope/Schedule/Budget Variance

None to report this period.

Major Contracts (\$s in thousands)

Vendor	Amount	Scope
ESA Adolfson	\$416	PE

Project Cost Summary (\$s in thousands)

Phase	Authorized Project Allocation	Commitment to Date	Incurred to Date
Administration	\$ 1,700	\$ 1,263	\$ 1,266
Preliminary Engineering	\$ 479	\$ 479	\$ 479
Final Design	\$ 900	\$ 617	\$ 477
Third Party Agreements	\$ 200	\$ 71	\$ 14
ROW Acquisition and Permits	\$ 186,485	\$ 185,211	\$ 185,192
Construction	\$ 12,054	\$ 7,435	\$ 7,433
Construction Services	\$ 150	\$ -	\$ -
Project Total	\$ 201,968	\$ 195,076	\$ 194,861

Key Project Activities

Current Period

- Notified by WSD of Fish and Wildlife that it will deny use of the streamlined JARPA (Joint Aquatic Resource Permit Application) for the project.
- Transmitted the 30% preliminary engineering for ST and King County's review.
- Developed the terms of the construction and maintenance agreement for the culvert replacement project.

Next Period

- Complete the environmental assessment documents.
- Execute the construction and maintenance agreement for the culvert replacement project.

Closely Monitored Issues

- Denial of using the streamlined JARPA will require Sound Transit to submit additional local permits and possibly a SEPA addendum, adding to the project schedule. Implementation of the fish passage culvert mitigation project will miss the 2018 fish construction window; Sound Transit Environmental Compliance is consulting with the local tribes and Army Corps of Engineers to extend the mitigation permit to October 2019.

Scope

Project includes design and construction of a third storage track and civil improvements to accommodate seven, eight-car Sounder train sets at the Lakewood layover facility and Century Yard.

The additional capacity is necessary when additional Sounder South trains, approved in ST2, begin service between Tacoma and Seattle in 2016/17 in advance of completion of the Sounder Maintenance Base (formerly Yard & Shops) project.



Sounder Yard Expansion will increase storage capacity for Sounder 7th train set

Schedule

	Start	Finish
Prelim. Engineering	Jul 2013	Jun 2014
Final Design	Jun 2014	Sep 2015
Construction	Feb 2016	Jun 2017

Scope/Schedule/Budget Variance

None to report this period.

Major Contracts (\$s in thousands)

Vendor	Amount	Scope
Parsons Brinkerhoff	\$1,694	PE/DB
HNTB	\$1,232	CMC
Shimmick Construction	\$11,663	CON

Project Cost Summary (\$s in thousands)

Phase	Authorized Project Allocation	Commitment to Date	Incurred to Date
Administration	\$ 1,200	\$ 1,191	\$ 1,192
Preliminary Engineering	\$ 2,029	\$ 1,779	\$ 1,208
Final Design	\$ -	\$ -	\$ -
Third Party Agreements	\$ -	\$ -	\$ -
ROW Acquisition and Permits	\$ 400	\$ 245	\$ 185
Construction	\$ 15,521	\$ 12,329	\$ 12,245
Construction Services	\$ 1,400	\$ 1,232	\$ 1,200
Project Total	\$ 20,550	\$ 16,776	\$ 16,030

Key Project Activities

Current Period

- Continued addressing punchlist items.
- Achieved project physical completion.
- Began project closeout.

Next Period

- Achieve project completion and acceptance.
- Achieve project closeout.

Closely Monitored Issues

- None identified at this time.

Scope

This project is currently undertaking preliminary engineering for access improvements identified for Sumner Station through ST Board action in August 2014. Board identified improvements include a new parking garage at Sumner Station, additional parking facilities, station area pedestrian access improvements, bicycle lane or path improvements near the station, secure bicycle storage, and area traffic improvements.

Project scope for Final Design will be determined with the concurrence of community and municipal stakeholders, following completion of conceptual and preliminary engineering.



Improving access to Sumner Station

Schedule

	Start	Finish
Prelim. Engineering	Apr 2013	2018
D/B Procurement	2017	2018
Final Design	2018	2019
Construction	2019	2021

Scope/Schedule/Budget Variance

None to report this period.

Project Cost Summary (\$s in thousands)

Phase	Authorized Project Allocation	Commitment to Date	Incurred to Date
Administration	\$ 1,433	\$ 841	\$ 846
Preliminary Engineering	\$ 2,996	\$ 2,545	\$ 2,058
Final Design	\$ -	\$ -	\$ -
Third Party Agreements	\$ 7,658	\$ 7,550	\$ 340
ROW Acquisition and Permits	\$ 4,414	\$ 3,037	\$ 2,818
Construction	\$ 113	\$ 97	\$ 97
Construction Services	\$ 428	\$ -	\$ -
Project Total	\$ 17,042	\$ 14,070	\$ 6,159

Major Contracts (\$s in thousands)

Vendor	Amount	Scope
Parametrix	\$2,486	CE/PE

Key Project Activities

Current Period

- Continued drafting Design Build project requirement documents.
- Continued negotiation offers with parcel owners for relocation and acquisition.

Next Period

- Continue drafting Design Build project requirement documents issued for review.
- Continue negotiation offers with parcel owners for relocation and acquisition.

Closely Monitored Issues

- None identified at this time.

Scope

Sound Transit is replacing the wooden, single-track railroad trestle east of Freighthouse Square with a new concrete, double-track bridge. The new bridge will support increased passenger service and rail capacity along the corridor and improve passenger service reliability.

Other improvements include building an extended passenger platform to accommodate Amtrak long-distance train, making minor street repair, relocating utilities, replacing retaining walls and upgrading railroad signals.



Project will replace existing Tacoma Trestle

Schedule

	Start	Finish
Prelim. Engineering	Aug 2013	Oct 2014
Final Design	Nov 2014	Nov 2015
Construction	Mar 2016	May 2018

Scope/Schedule/Budget Variance

None reported during this period.

Major Contracts (\$s in thousands)

Vendor	Amount	Scope
David Evans & Associates	\$15,713	PE/ED/FD
HNTB	\$4,926	CMC
Flatiron west, Inc.	\$82,461	CON
Voestalpine Nortrak, Inc.	\$1,107	Track Procurement

Project Cost Summary (\$s in thousands)

Phase	Authorized Project Allocation	Commitment to Date	Incurred to Date
Administration	\$ 8,094	\$ 4,518	\$ 4,498
Preliminary Engineering	\$ 4,062	\$ 4,062	\$ 4,062
Final Design	\$ 15,198	\$ 12,343	\$ 10,707
Third Party Agreements	\$ 1,781	\$ 432	\$ 287
ROW Acquisition and Permits	\$ 10,061	\$ 6,876	\$ 6,666
Construction	\$ 114,288	\$ 86,299	\$ 83,062
Construction Services	\$ 7,581	\$ 4,926	\$ 4,382
Project Total	\$ 161,065	\$ 119,456	\$ 113,664

Key Project Activities

Current Period

- Met with the Puyallup Tribe to discuss the Section 106 draft project artist cost reimbursement agreement.
- Completed the track and signal cutover of the L Street crossover and north bridge.
- Completed Safety certification for the platform extension to permit Amtrak trains to operate out of the Tacoma Dome Station.

Next Period

- Complete remaining sanitary sewer work, retaining wall and platform finish work.
- Sound Transit and construction contractor to negotiate the contract's Milestone 2 substantial completion date.
- Working with U.S. Army Corps of Engineers to extend the wetland permit to complete the retaining wall and mitigation restoration project under the railroad bridge.

Closely Monitored Issues

- Sound Transit construction management to monitor progress of the contractor's remaining work.

This page intentionally left blank.