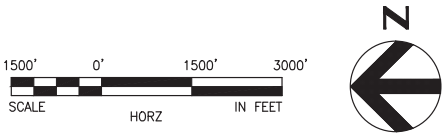


SOUND TRANSIT FEDERAL WAY LINK EXTENSION



PREFERRED ALTERNATIVE SHEET LAYOUT MATRIX																	
	1	2	3	4	5	6	7	8	9	10	11	12	13	14	15	16	17
A - PREFERRED ALTERNATIVE	X	X	X	X	X	X	X	X	X	X	X	X	X	X	X	X	
B- KENT/DES MOINES I-5 STATION OPTION					X	X											
C- KENT/DES MOINES-AT-GRADE STATION OPTION					X	X	X										
D - LANDFILL MEDIAN ALIGNMENT OPTION						X	X	X									
E- S. 272ND STAR LAKE ELEVATED STATION OPTION									X	X	X						
F - S. 317TH ELEVATED ALIGNMENT OPTION															X	X	
G- FEDERAL WAY I-5 STATION OPTION																	X
H - FEDERAL WAY S 320TH PARK-AND-RIDE STATION OPTION															X	X	



10/4/2016 3:02:40 PM
C:\P\WORKING\SEA\1078401\EA\00-GX02.DWG

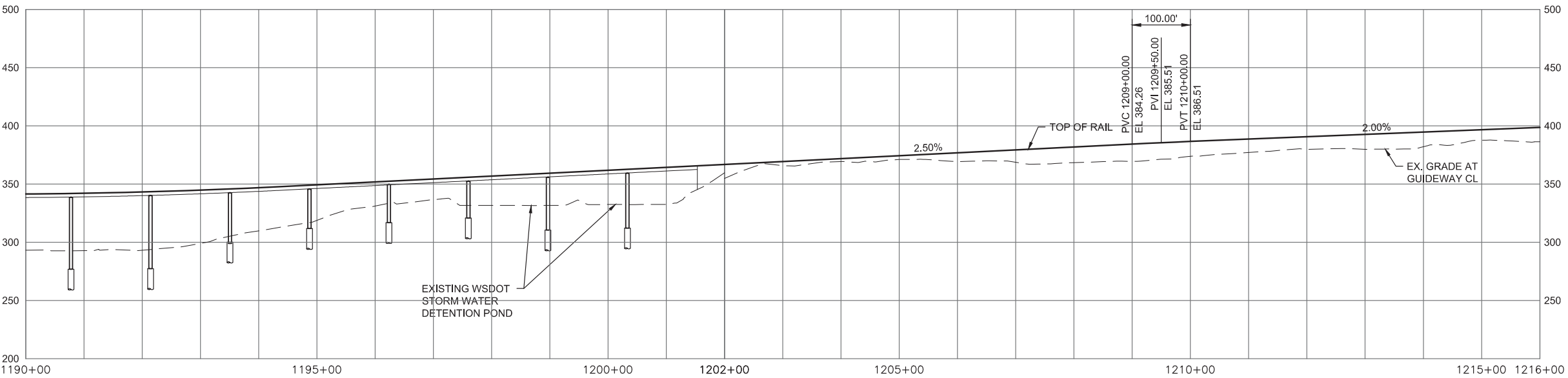
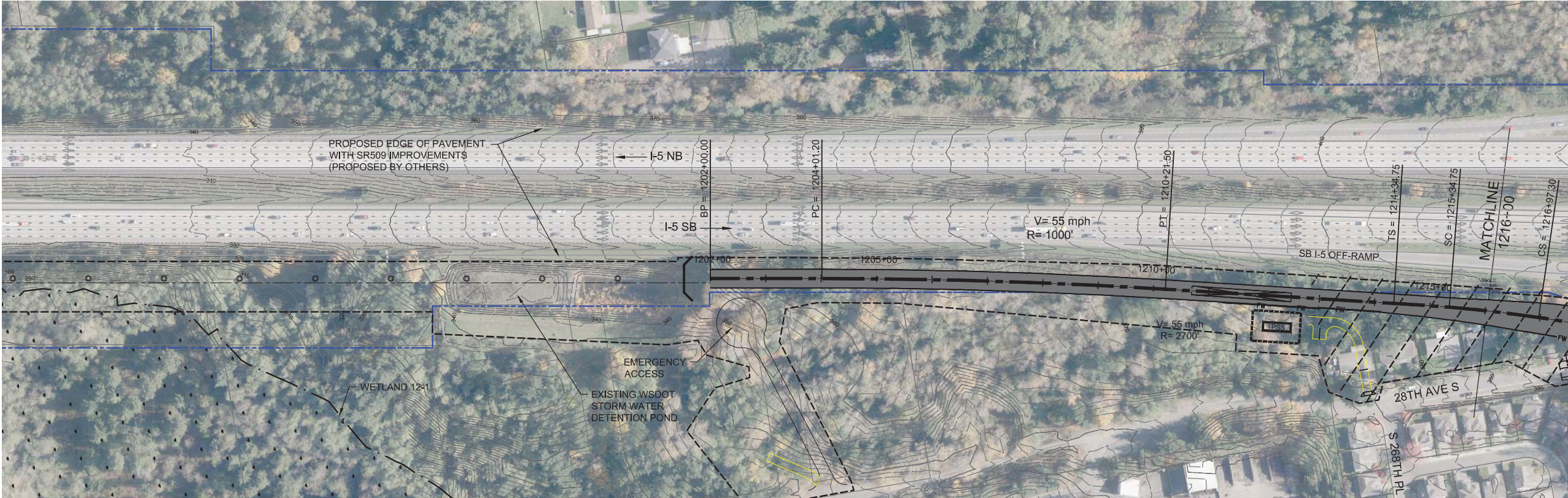


FINAL EIS - CONCEPTUAL DESIGN
SHEET INDEX KEY MAP
S 272ND STAR LAKE ELEVATED STATION OPTION

AUGUST 2016

I5-E00-GX02
43

SOUND TRANSIT FEDERAL WAY LINK EXTENSION



9/30/2016 1:05:52 PM
C:\P\WORKING\SEAID\078842\FILE I-5_272ND\AERIAL.DWG

FOXC

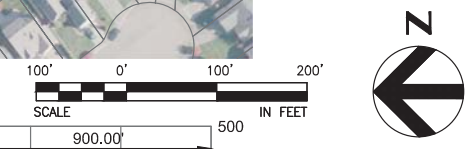
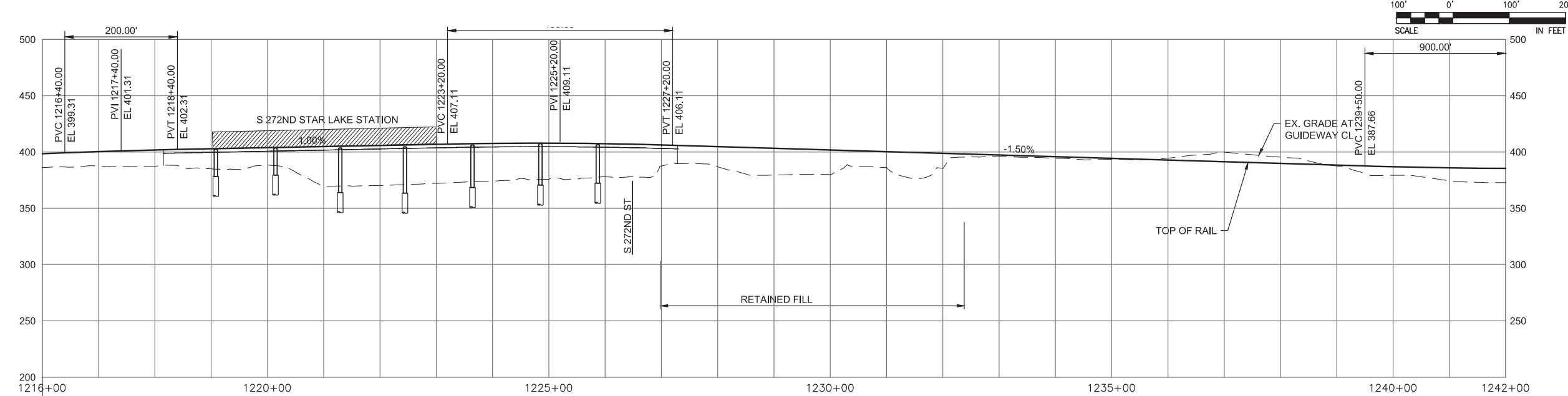
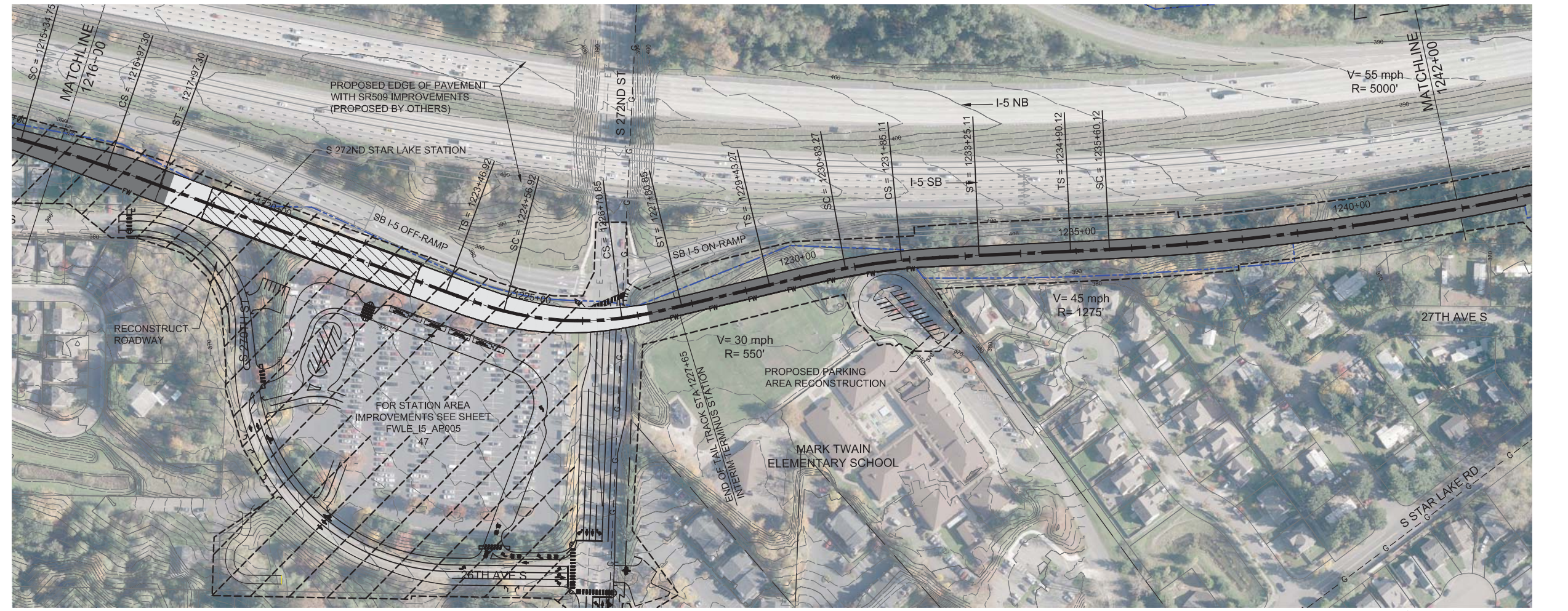


FINAL EIS - CONCEPTUAL DESIGN
TRACK PLAN & PROFILE AND ROADWAY RECONSTRUCTION
S. 272ND STAR LAKE ELEVATED STATION OPTION
STA 1190+00 TO STA 1216+00

AUGUST 2016

I5-E1-PP09
44

SOUND TRANSIT FEDERAL WAY LINK EXTENSION



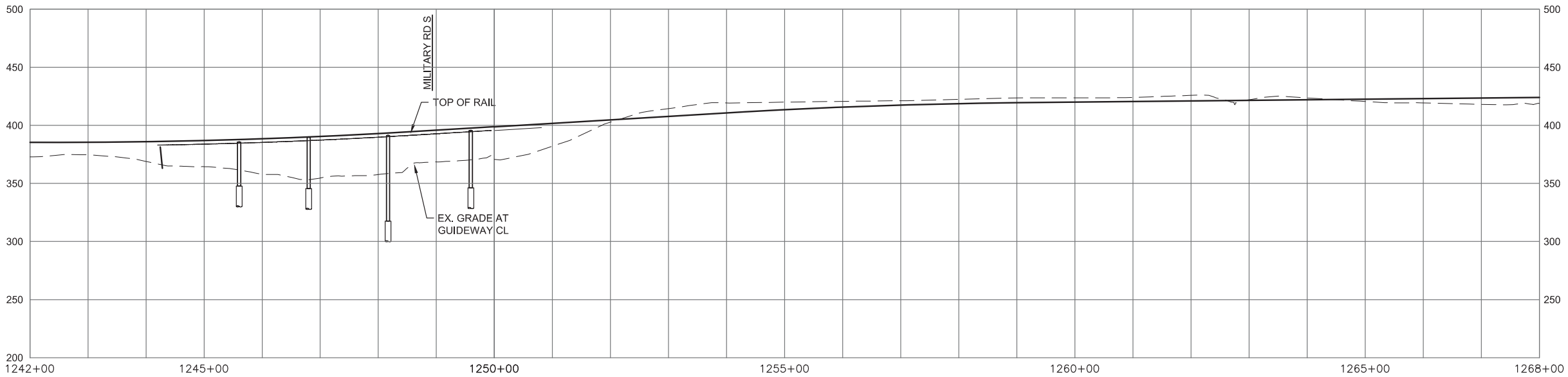
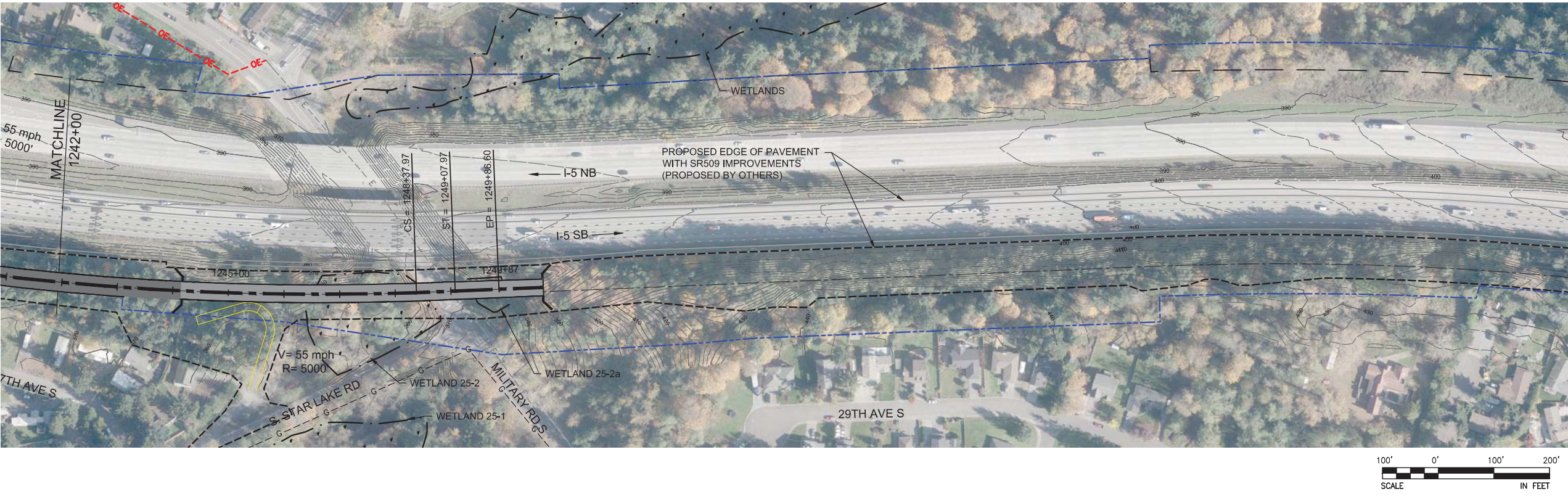
10/5/2016 8:31:34 AM
C:\P\WORKING\SEAID\078842\EL FWLE I-5_272ND\AERIAL.DWG



FINAL EIS - CONCEPTUAL DESIGN
TRACK PLAN & PROFILE AND ROADWAY RECONSTRUCTION
S. 272ND STAR LAKE ELEVATED STATION OPTION
STA 1216+00 TO STA 1242+00

AUGUST 2016
I5-E2-PP10
45

SOUND TRANSIT FEDERAL WAY LINK EXTENSION



9/30/2016 1:06:32 PM
C:\P\WORKING\SEAID\078842\FILE\I-5_272ND\AERIAL.DWG

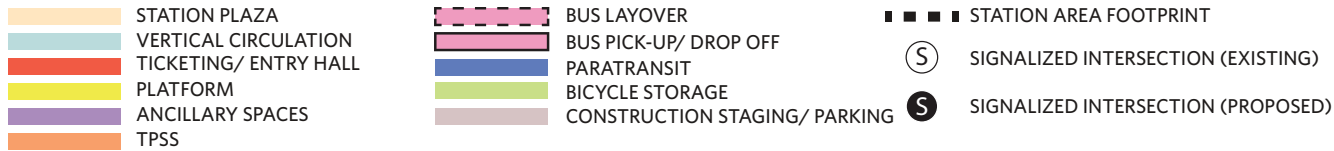
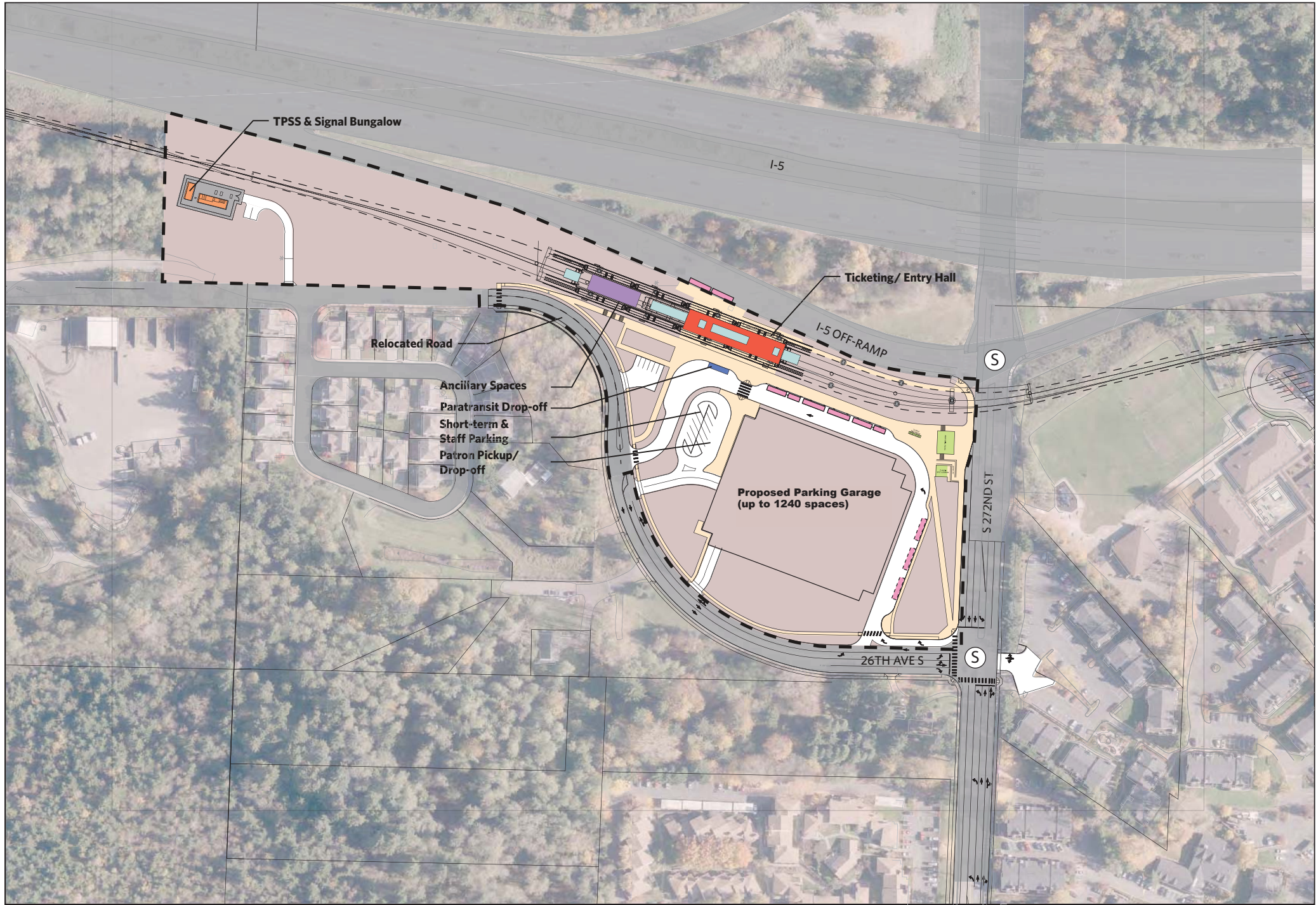


FINAL EIS - CONCEPTUAL DESIGN
TRACK PLAN & PROFILE AND ROADWAY RECONSTRUCTION
S. 272ND STAR LAKE ELEVATED STATION OPTION
STA 1242+00 TO STA 1268+00

AUGUST 2016

I5-E3-PP11
46

SOUND TRANSIT FEDERAL WAY LINK EXTENSION



ASSUMPTIONS:

S 272nd Star Lake Station	
Alternative(s)	Preferred
Boardings	3,500
Boardings (interim terminus)	6,500
Station Configuration	
Terminus/ In-Line	Interim Terminus
Station Type	Center Platform-Trench
Platform Width	34'
Tail Track	900'
Crossover	Yes
TPSS	Yes
Program	
KC Metro Ancillary Spaces (SF)	200
ST Ancillary Spaces (SF)	2,800
Total Ancillary Spaces (SF)	3,000
Vertical Circulation	
# of entrances	1
# of escalators	2
# of staircases (patron)	1
# of elevators	2
# of emergency stairs	1
Bus/ Paratransit Facilities	
Bus Bays (KCM)	4 bay, two 60', two 40' coaches. Maintain existing bays at I-5 offramp
Bus Bays (ST)	N/A
Rapid Ride	N/A
Bus Layover (KCM)	One 60', two 40' coaches
Bus Layover (ST)	N/A
Paratransit	1 permanent, 1 interim
Communication Facility	Tier 2
Parking & Amenities	
Bike Cage	900 SF
Patron Drop-off	6 spaces
Short-term Patron Parking	7 to 10 spaces
Staff Parking	4 spaces, share w/short trm
Service/emerg. vehicle park.	2 spaces, sperate lot
Signal bungalow/ TPSS park.	2 spaces, dedicated
Existing Patron Parking	540 spaces
Additional Patron Parking	700 spaces
Total Proposed Patron Parking	1240 spaces (structure)

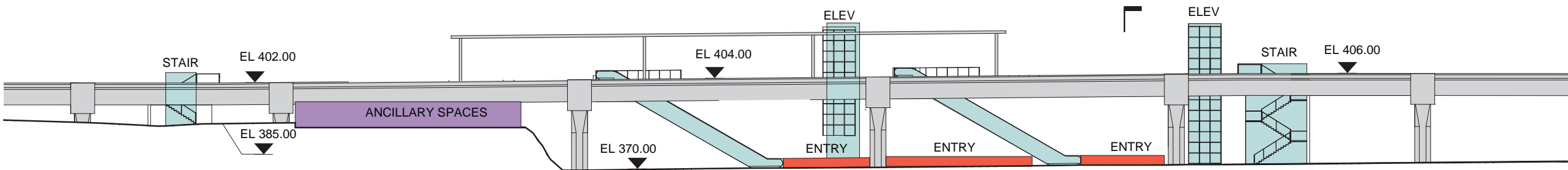


EIS - CONCEPTUAL DESIGN
S 272ND STAR LAKE ELEVATED STATION OPTION
SITE PLAN

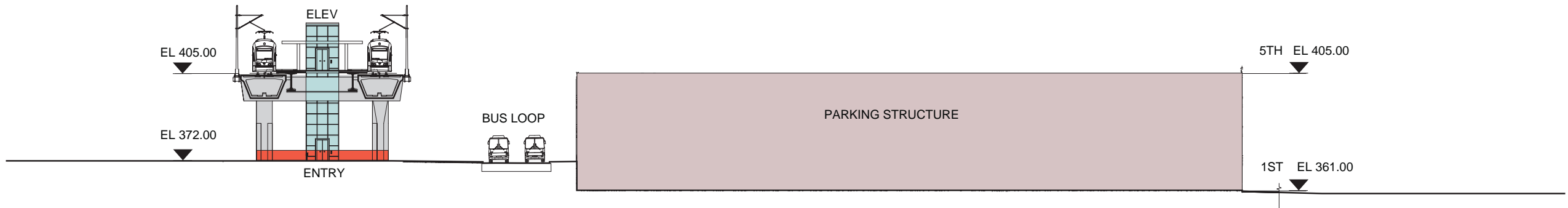
AUGUST 2016

FWLE_I5_AP005
47

SOUND TRANSIT FEDERAL WAY LINK EXTENSION



SECTION LOOKING EAST



SECTION LOOKING SOUTH

- STATION PLAZA

VERTICAL CIRCULATION

TICKETING/ ENTRY HALL

PLATFORM

ANCILLARY SPACES

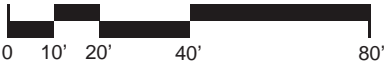
TPSS
- BUS LAYOVER

BUS PICK-UP/ DROP OFF

PARATRANSIT

BICYCLE STORAGE

CONSTRUCTION STAGING/ PARKING



EIS - CONCEPTUAL DESIGN
S 272ND STAR LAKE ELEVATED STATION OPTION
SECTIONS

AUGUST 2016

FWLE_I5_AX005
48