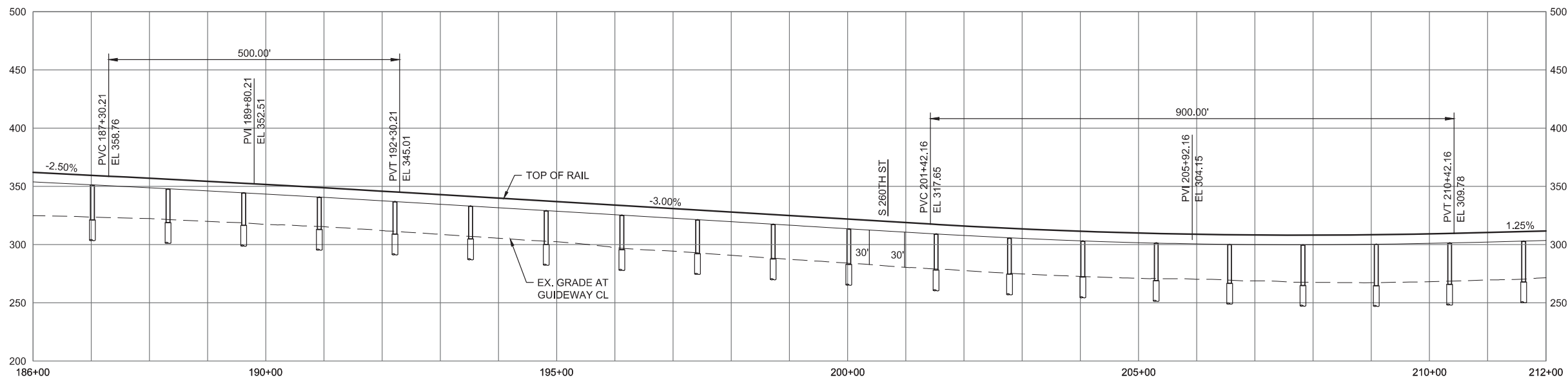
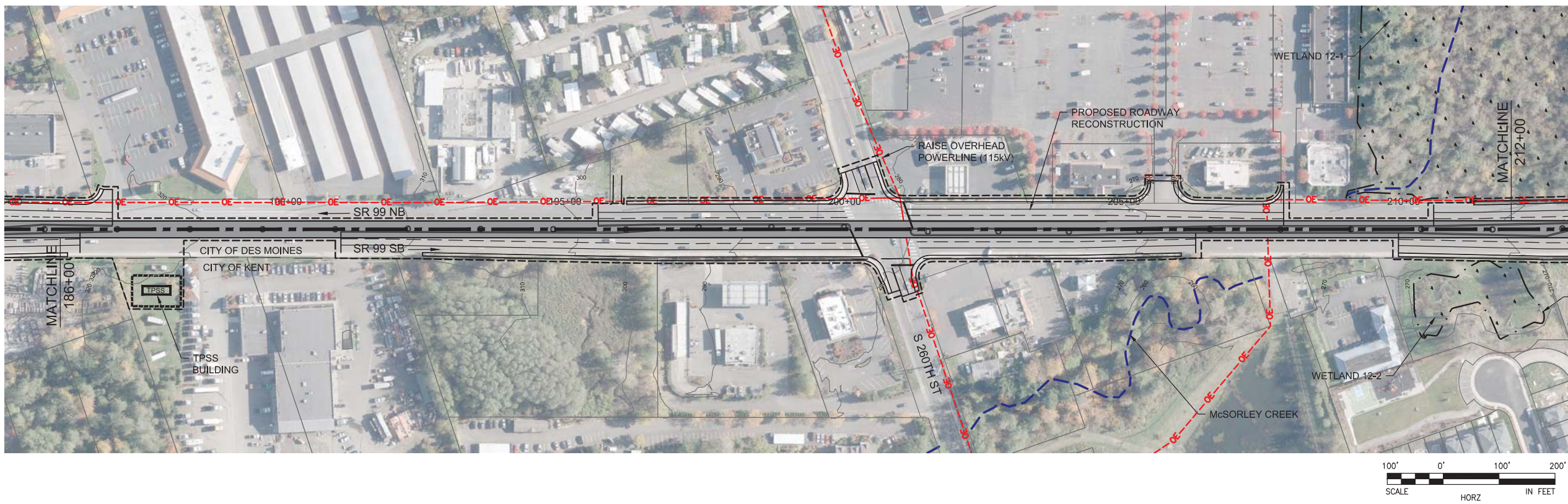


# SOUND TRANSIT FEDERAL WAY LINK EXTENSION



9/26/2016 3:27:22 PM  
C:\P\WORKING\SEA\0114119A\FWLE\_SRB9\_MAINLINE.DWG



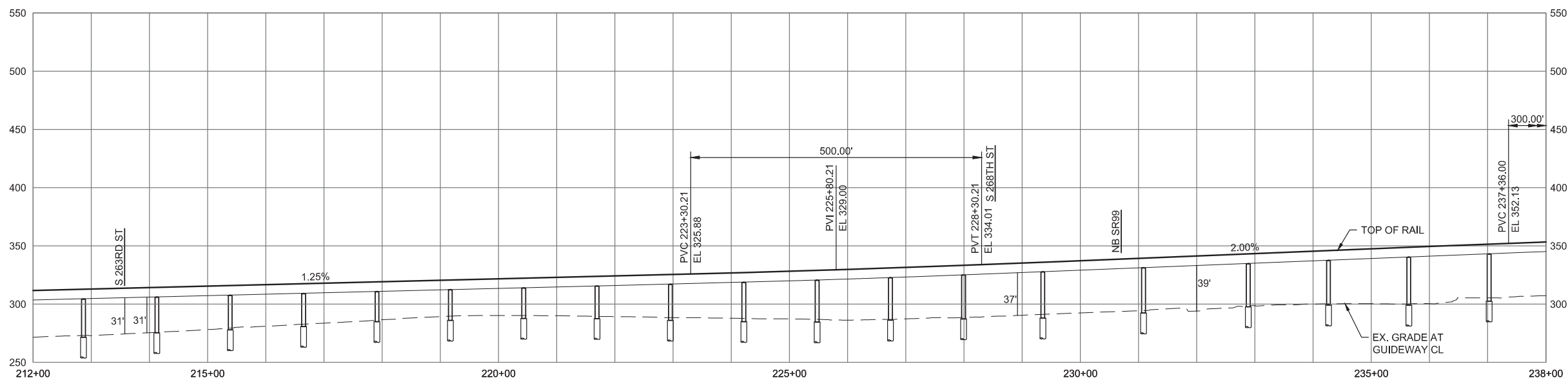
FINAL EIS - CONCEPTUAL DESIGN  
TRACK PLAN & PROFILE AND ROADWAY RECONSTRUCTION  
SR 99 ALTERNATIVE  
STA 186+00 TO STA 212+00

AUGUST 2016

SR99-A8-PP08  
71



# SOUND TRANSIT FEDERAL WAY LINK EXTENSION



FINAL EIS - CONCEPTUAL DESIGN  
TRACK PLAN & PROFILE AND ROADWAY RECONSTRUCTION  
SR 99 ALTERNATIVE  
STA 212+00 TO STA 238+00

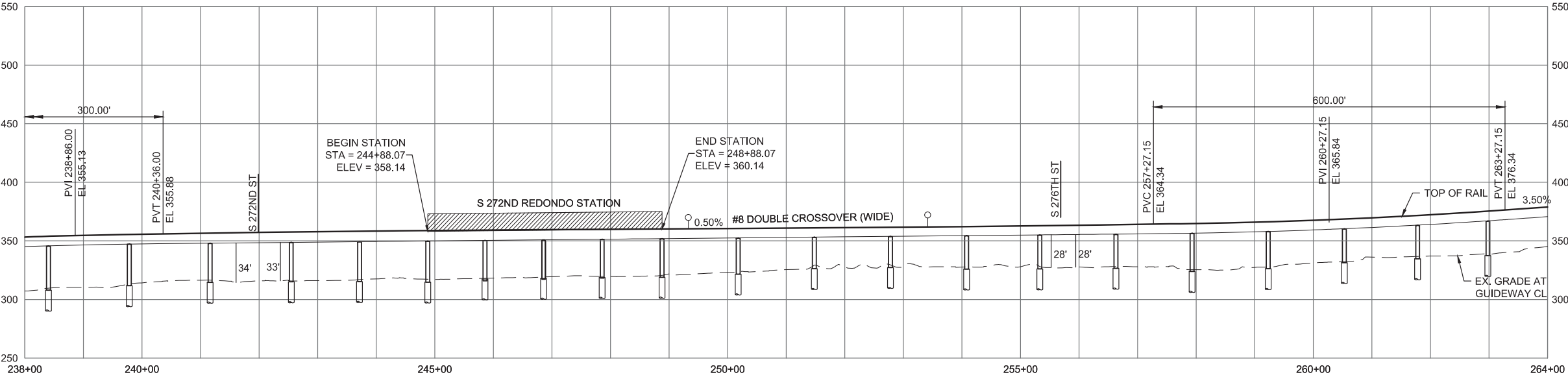
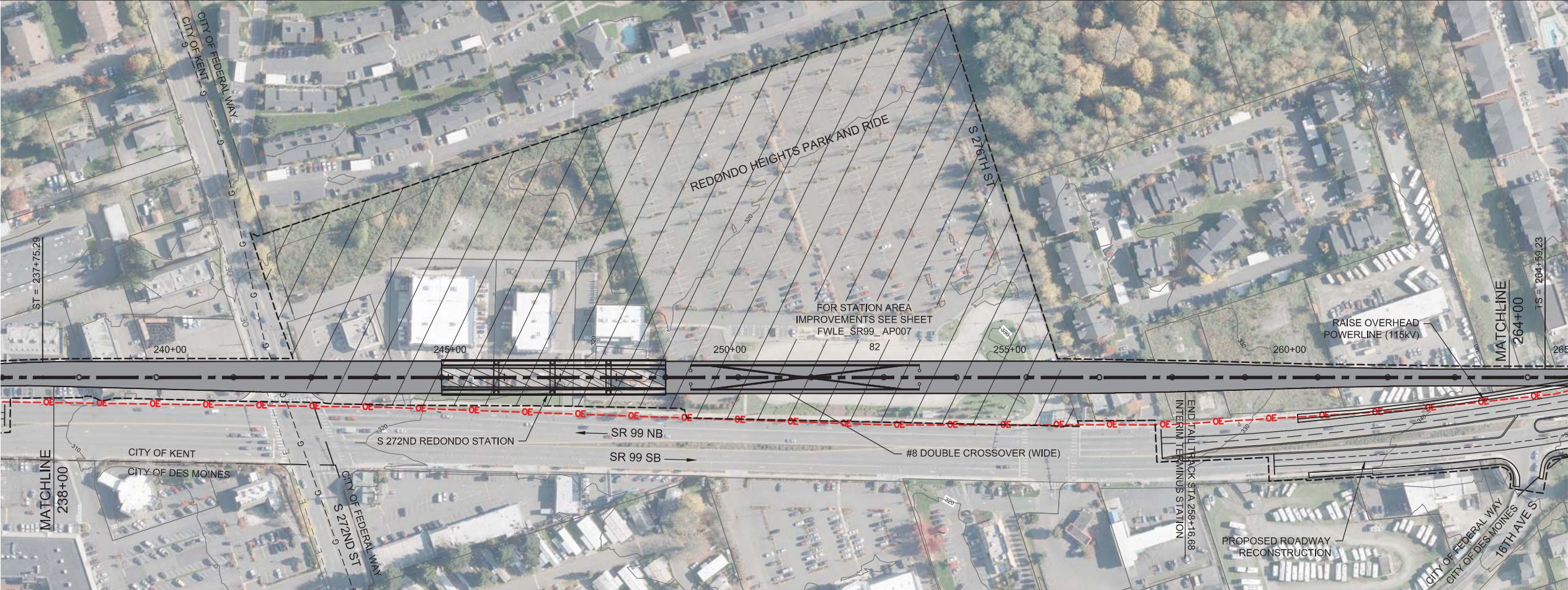
AUGUST 2016

SR99-A9-PP09  
72

10/3/2016 11:27:09 AM  
C:\P\WORKING\SEA\011419\A\_FWL\_E\_SRB9\_MAINLINE.DWG



SOUND TRANSIT FEDERAL WAY LINK EXTENSION



10/3/2016 11:29:27 AM  
C:\P\WORKING\SEA\0114119A\FWLE\_SR99\_MAINLINE.DWG



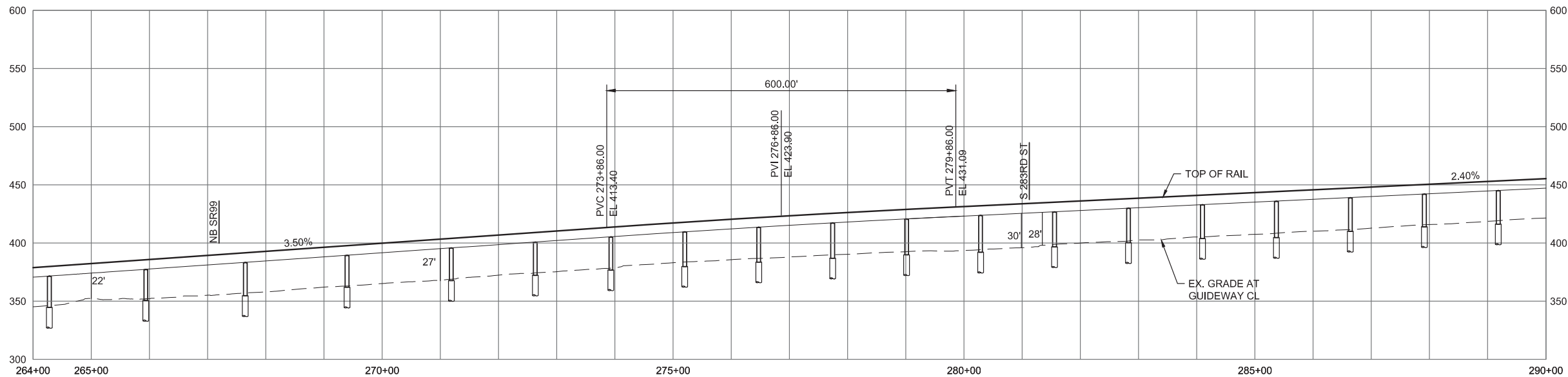
FINAL EIS - CONCEPTUAL DESIGN  
TRACK PLAN & PROFILE AND ROADWAY RECONSTRUCTION  
SR 99 ALTERNATIVE  
STA 238+00 TO STA 264+00

AUGUST 2016

SR99-A10-PP10  
73



# SOUND TRANSIT FEDERAL WAY LINK EXTENSION



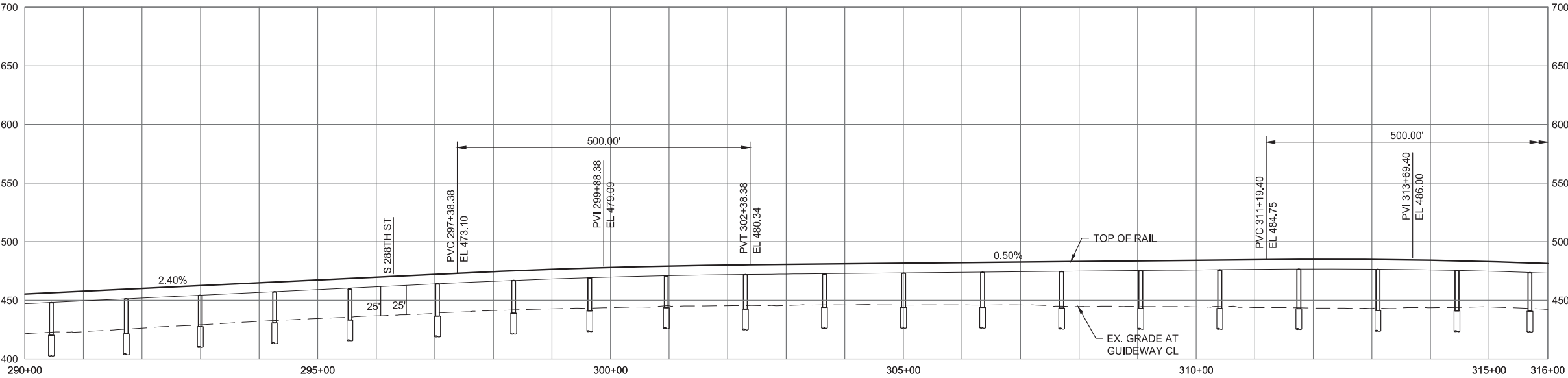
FINAL EIS - CONCEPTUAL DESIGN  
TRACK PLAN & PROFILE AND ROADWAY RECONSTRUCTION  
SR 99 ALTERNATIVE  
STA 264+00 TO STA 290+00

AUGUST 2016

SR99-A11-PP11  
74



# SOUND TRANSIT FEDERAL WAY LINK EXTENSION



9/26/2016 3:29:35 PM  
C:\P\WORKING\SEA\0114119A\_FWLE\_S189 MAINLINE.DWG



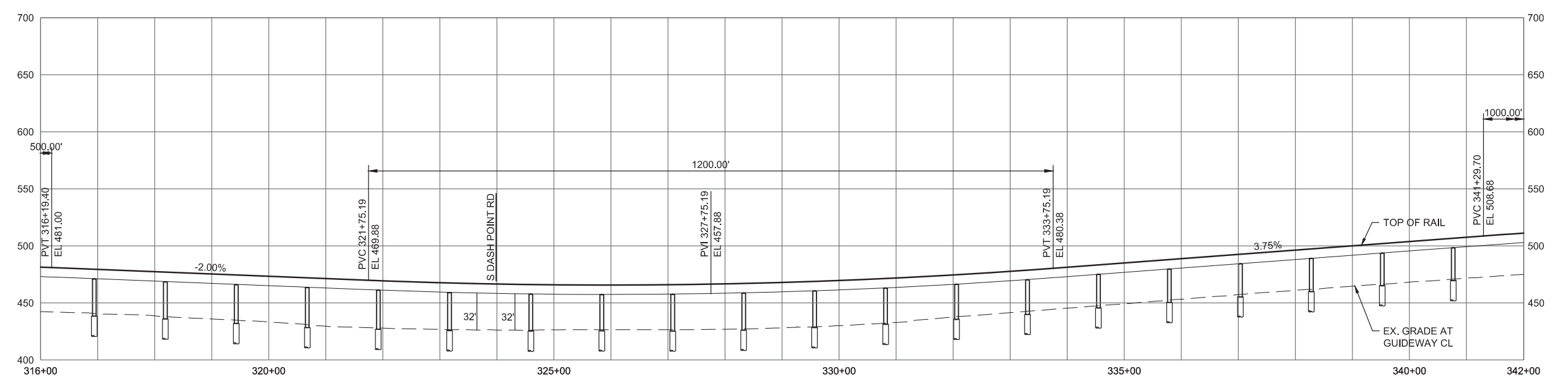
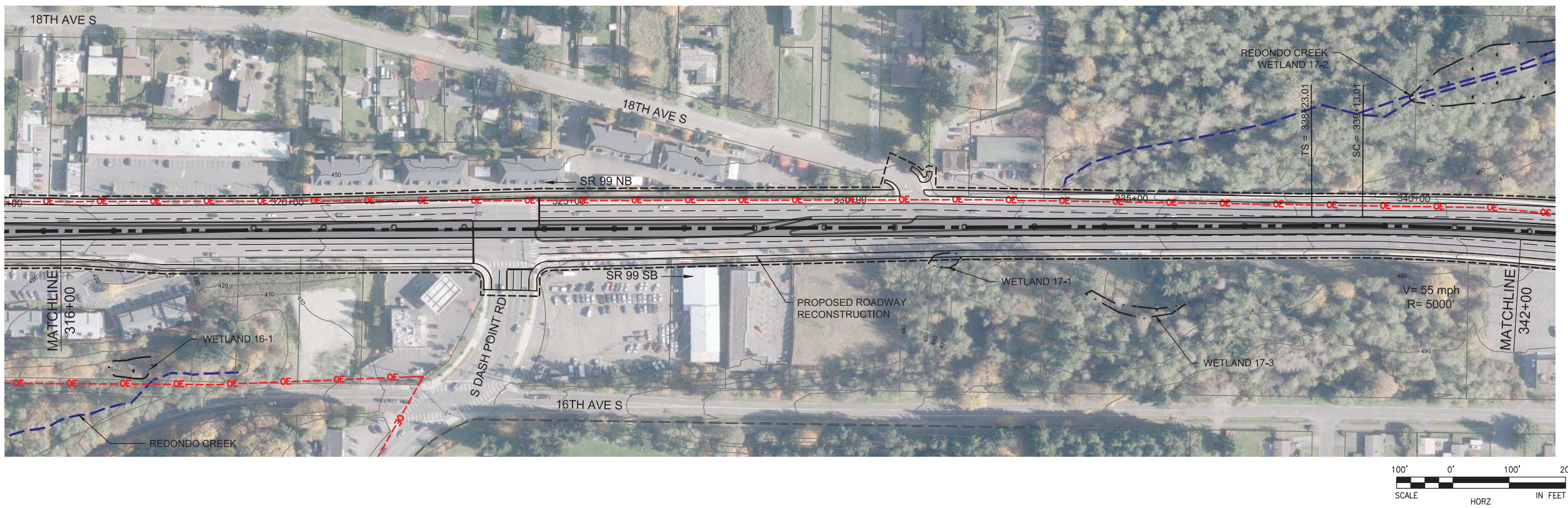
FINAL EIS - CONCEPTUAL DESIGN  
TRACK PLAN & PROFILE AND ROADWAY RECONSTRUCTION  
SR 99 ALTERNATIVE  
STA 290+00 TO STA 316+00

AUGUST 2016

SR99-A12-PP12  
75



# SOUND TRANSIT FEDERAL WAY LINK EXTENSION



9/26/2016 3:30:05 PM  
C:\P\WORKING\SEA\0114119A\_FWLE\_SRB9\_MAINLINE.DWG  
FOXC

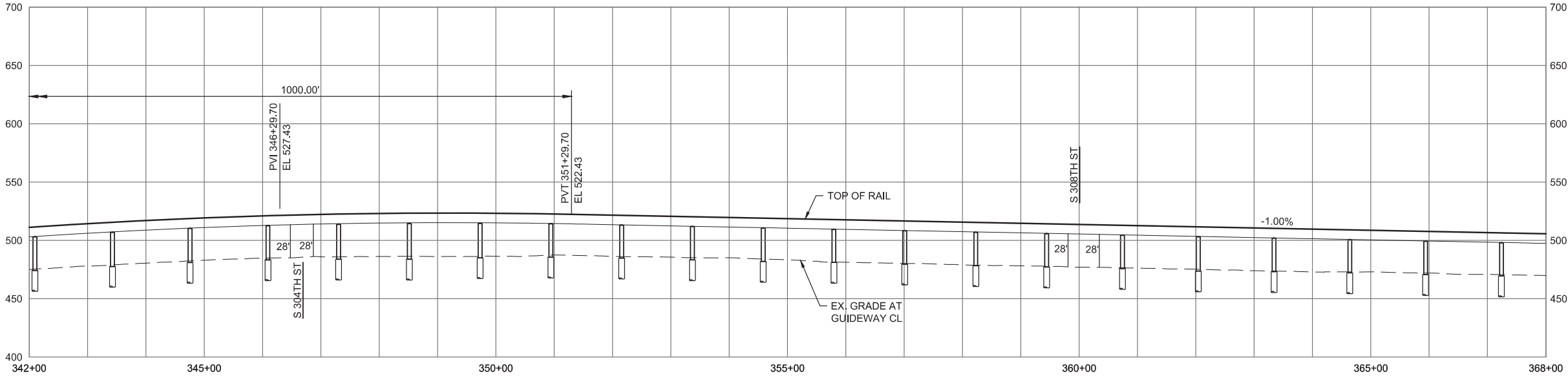
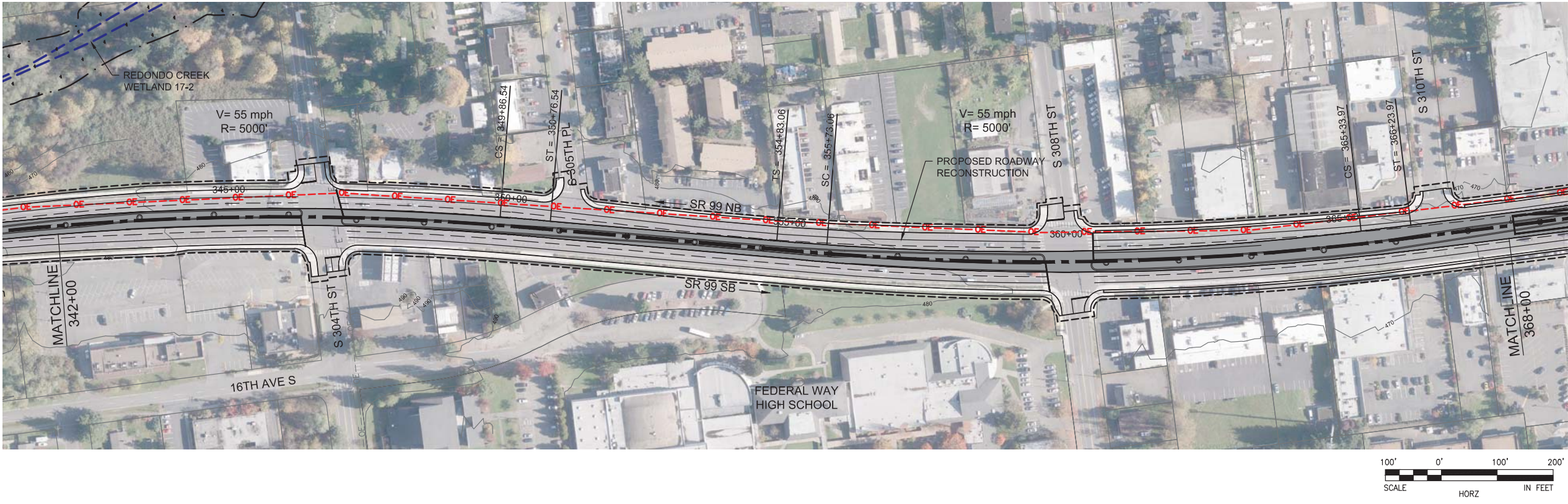


FINAL EIS - CONCEPTUAL DESIGN  
TRACK PLAN & PROFILE AND ROADWAY RECONSTRUCTION  
SR 99 ALTERNATIVE  
STA 316+00 TO STA 342+00

AUGUST 2016  
SR99-A13-PP13  
76



SOUND TRANSIT FEDERAL WAY LINK EXTENSION



9/26/2016 3:30:37 PM  
C:\P\WORKING\SEA\011419A\_FWL\_E\_SRB9\_MAINLINE.DWG



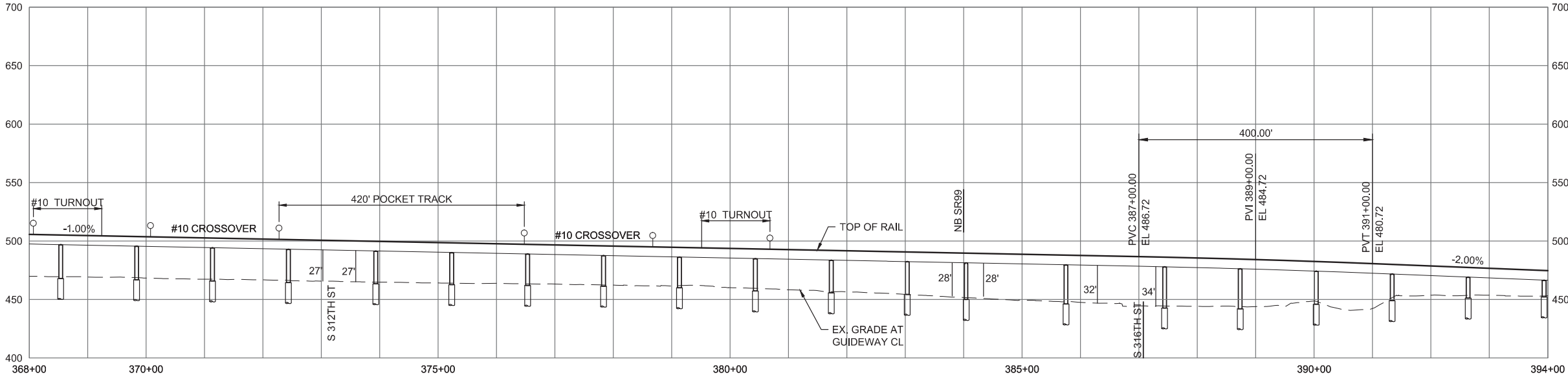
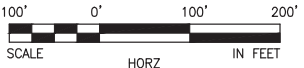
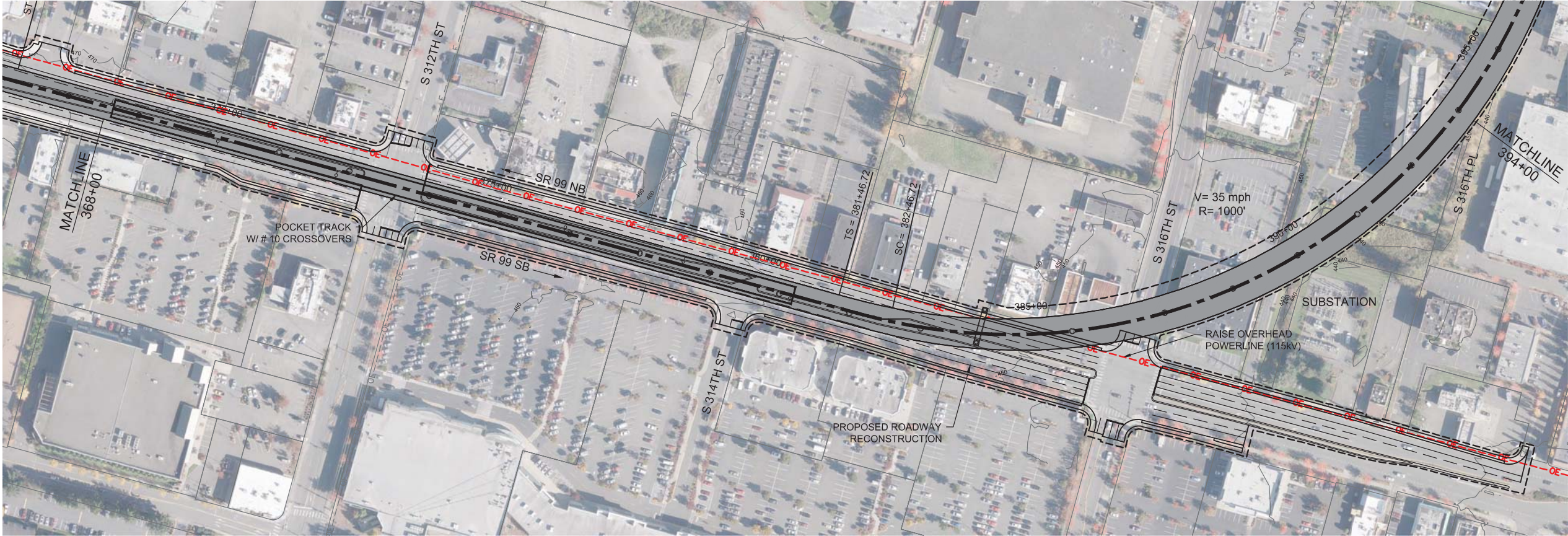
FINAL EIS - CONCEPTUAL DESIGN  
TRACK PLAN & PROFILE AND ROADWAY RECONSTRUCTION  
SR 99 ALTERNATIVE  
STA 342+00 TO STA 368+00

AUGUST 2016

SR99-A14-PP14  
77



SOUND TRANSIT FEDERAL WAY LINK EXTENSION



10/3/2016 11:53:30 AM  
C:\P\WORKING\SEA\011419A\_FWLE\_SRP9 MAINLINE.DWG



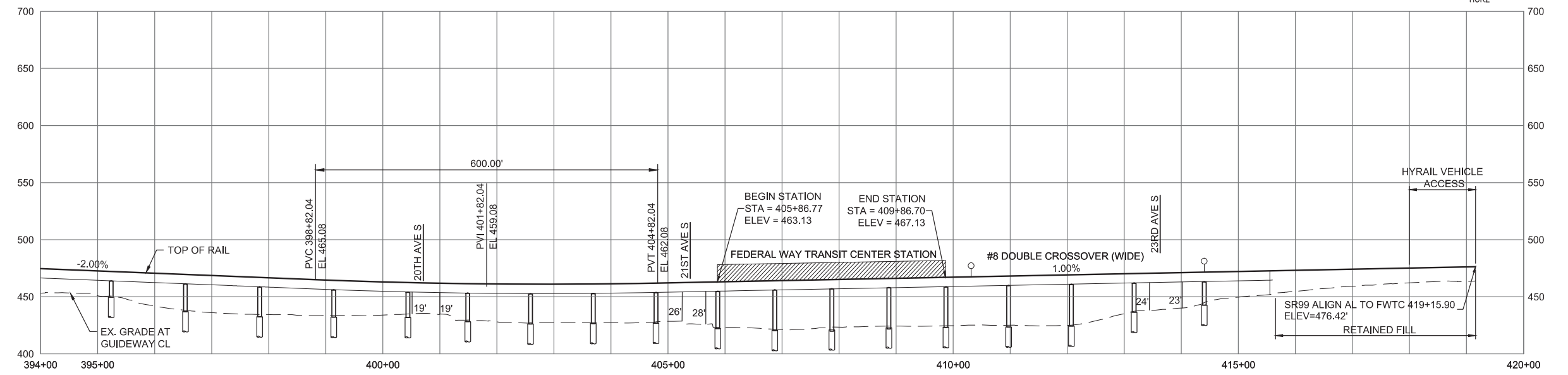
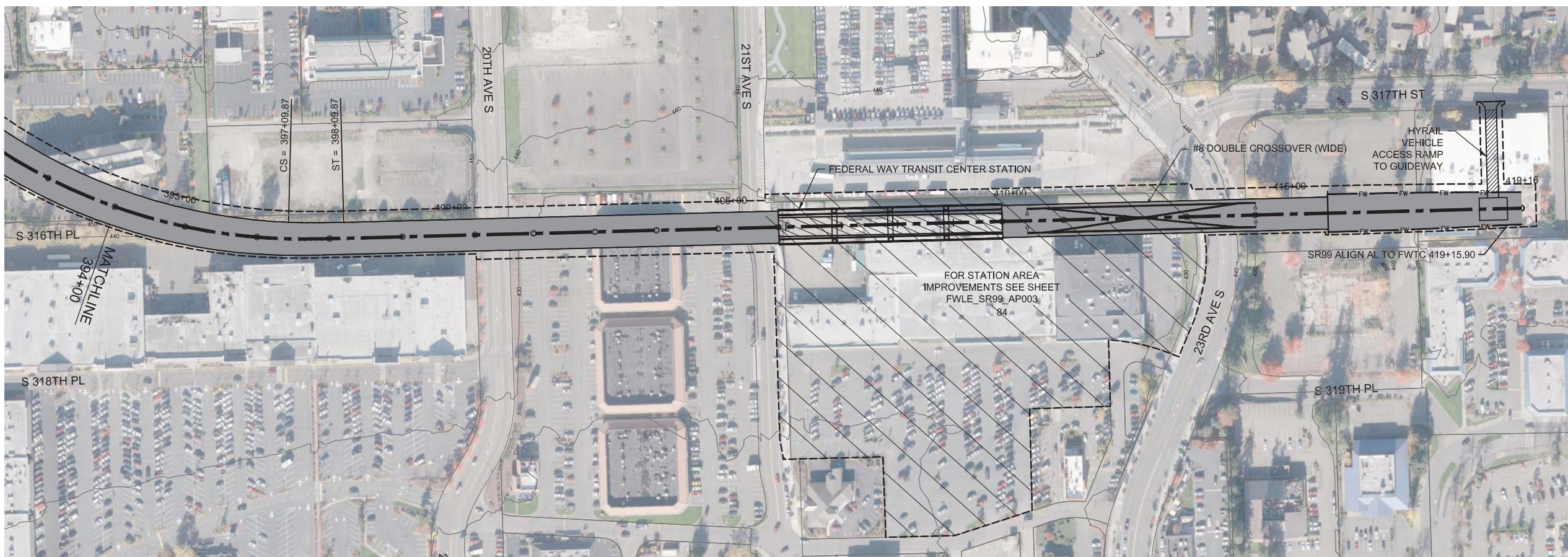
FINAL EIS - CONCEPTUAL DESIGN  
TRACK PLAN & PROFILE AND ROADWAY RECONSTRUCTION  
SR 99 ALTERNATIVE  
STA 368+00 TO STA 394+00

AUGUST 2016

SR99-A15-PP15  
78



SOUND TRANSIT FEDERAL WAY LINK EXTENSION



10/3/2016 12:07:24 PM  
C:\P\WORKING\SEA\0114119A\FWLE\_SR99\_MAINLINE.DWG  
FOXC

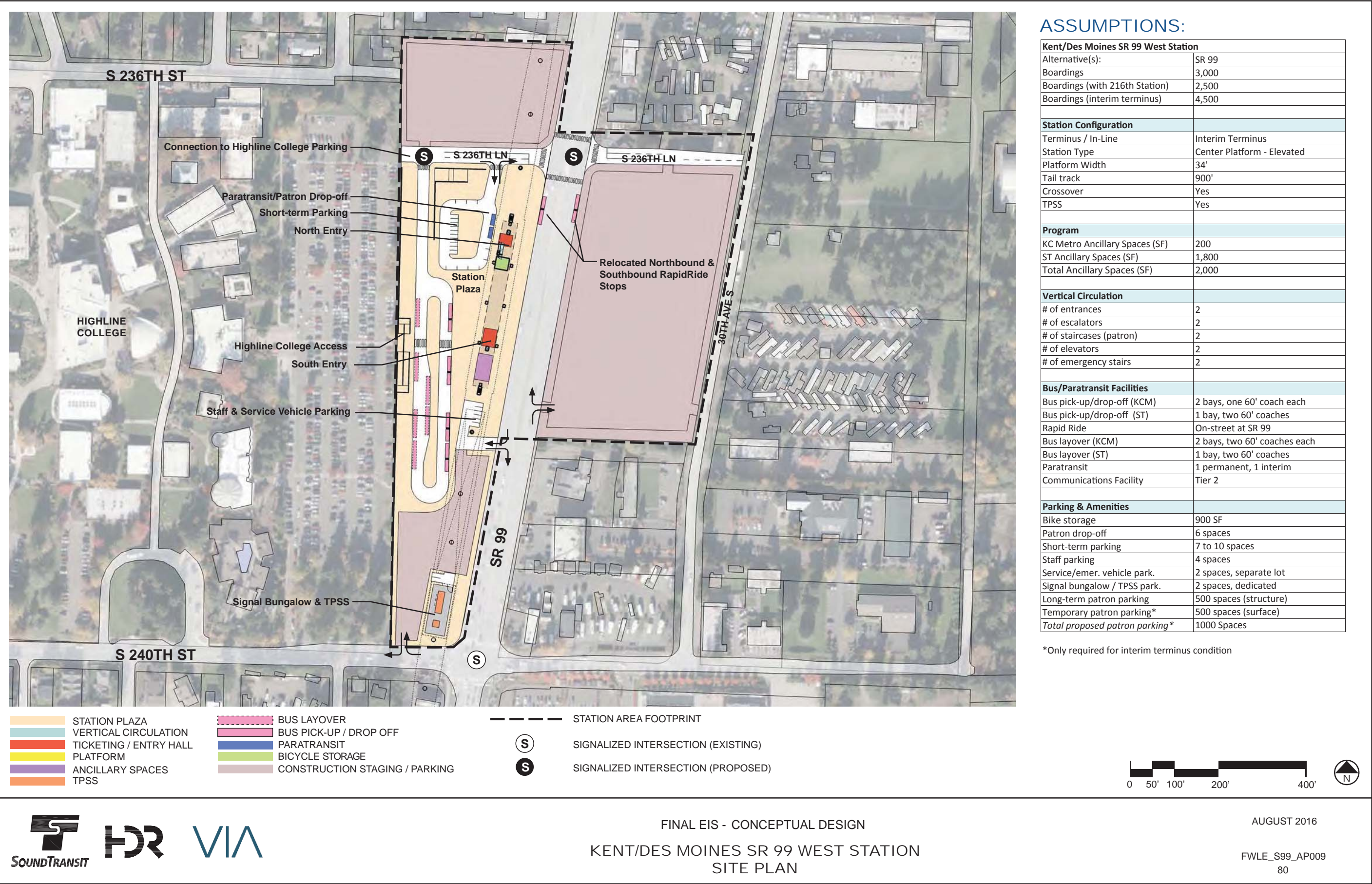


FINAL EIS - CONCEPTUAL DESIGN  
TRACK PLAN & PROFILE AND ROADWAY RECONSTRUCTION  
SR 99 ALTERNATIVE  
STA 394+00 TO STA 419+15.90

AUGUST 2016  
SR99-A16-PP16  
79

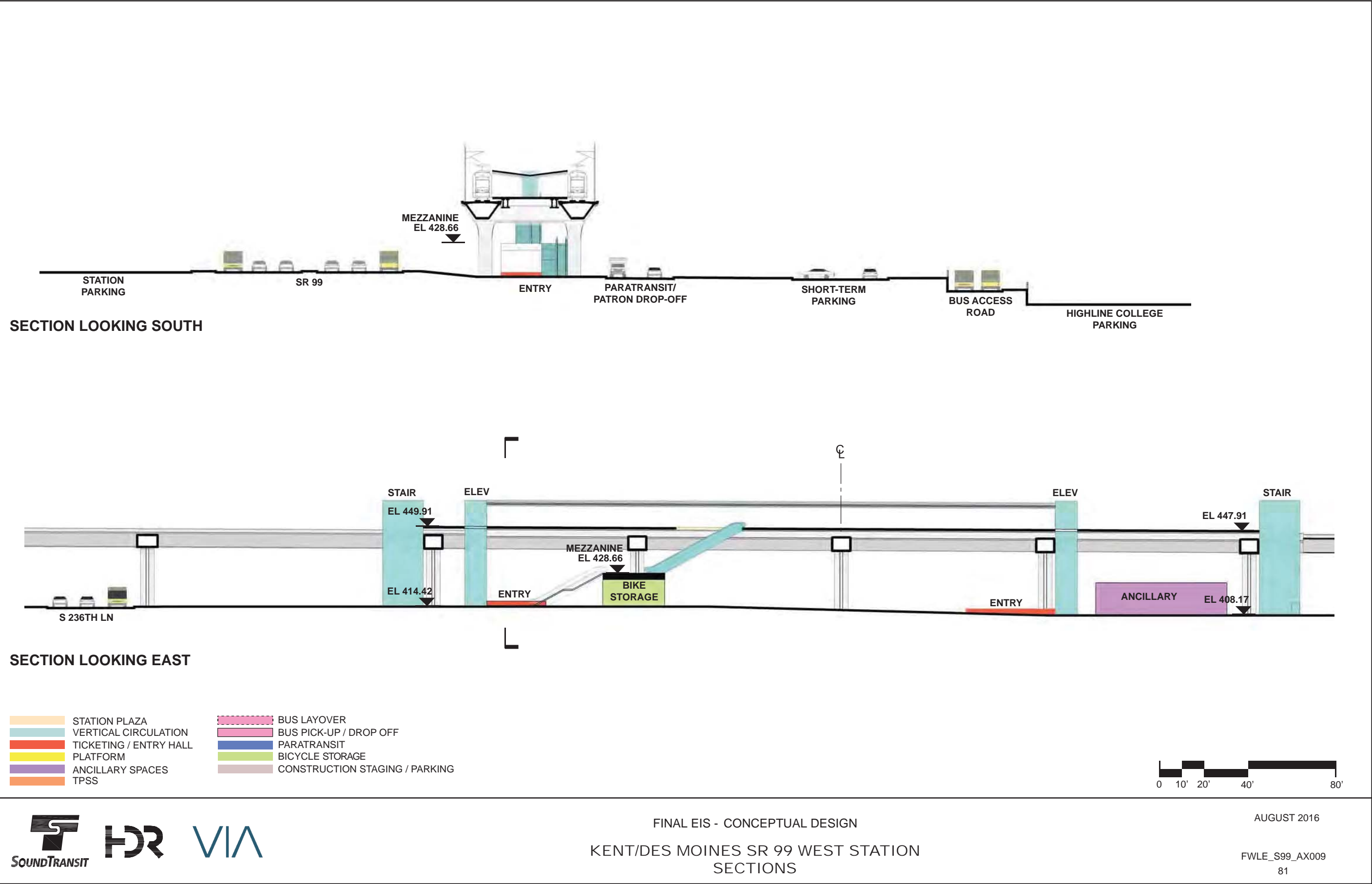


SOUND TRANSIT FEDERAL WAY LINK EXTENSION



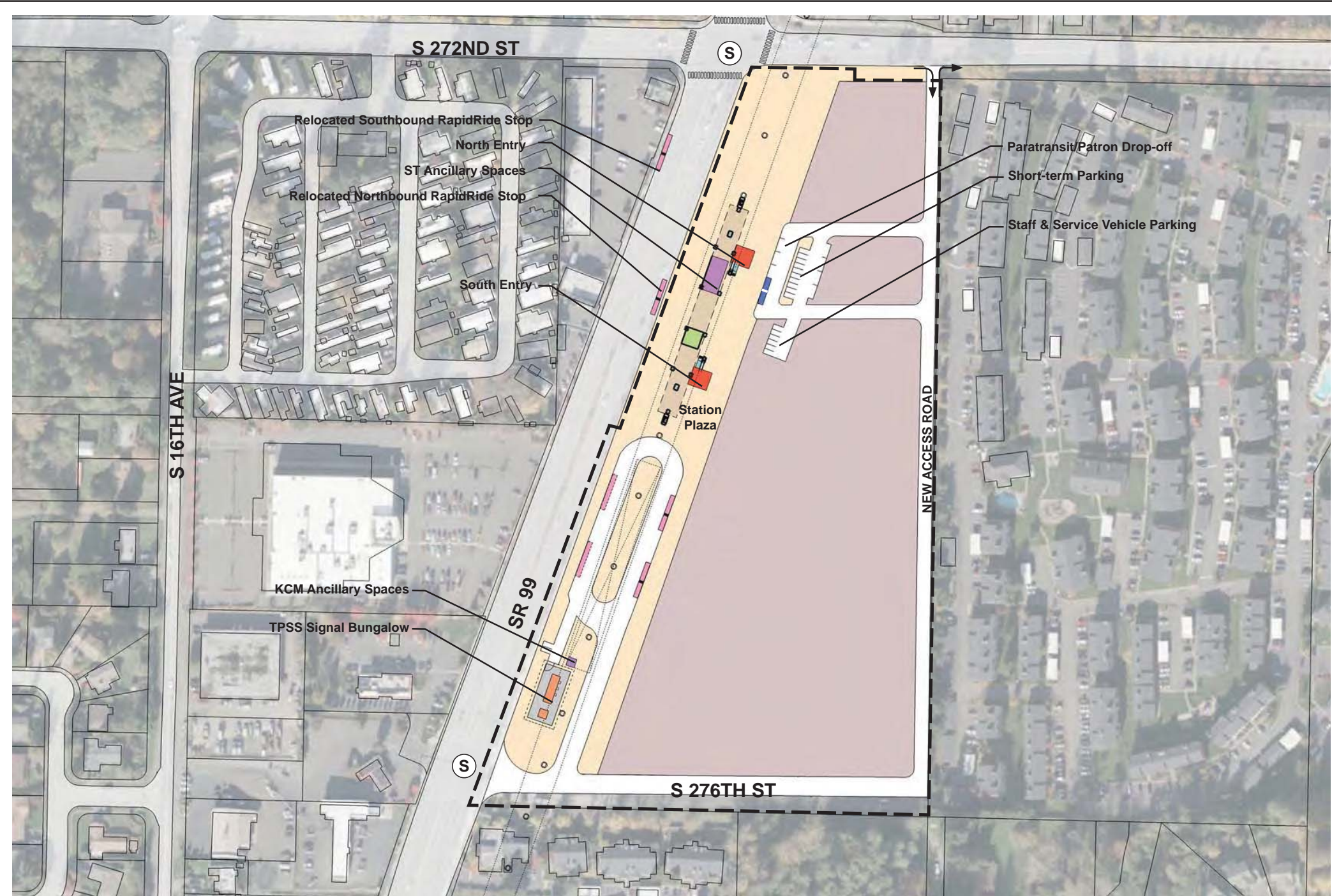


SOUND TRANSIT FEDERAL WAY LINK EXTENSION





SOUND TRANSIT FEDERAL WAY LINK EXTENSION



ASSUMPTIONS:

S 272nd Redondo Station	
Alternative(s)	SR 99
Boardings	1,500
Boardings (interim terminus)	3,500
Station Configuration	
Terminus / In-Line	Interim Terminus
Station Type	Center Platform - Elevated
Platform Width	34'
Tail track	900'
Crossover	Yes
TPSS	Yes
Program	
KC Metro Ancillary Spaces (SF)	200
ST Ancillary Spaces (SF)	1,800
Total Ancillary Spaces (SF)	2,000
Vertical Circulation	
# of entrances	2
# of escalators	4
# of staircases (patron)	4
# of elevators	2
# of emergency stairs	2
Bus/ Paratransit Facilities	
Bus bays (KCM)	2 bays, one 60' coach each
Bus bays (ST)	N/A
Rapid Ride	On-street at SR 99
Bus layover (KCM)	2 bays, one 60' coach each
Bus layover (ST)	N/A
Paratransit	1 permanent, 1 interim
Communications Facility	Tier 2
Parking & Amenities	
Bike storage	900 SF
Patron drop-off	6 spaces
Short-term patron parking	7 to 10 spaces
Staff parking	4 spaces
Service/emerg. vehicle park.	2 spaces, separate lot
Signal bungalow / TPSS park.	2 spaces, dedicated
Existing patron parking	700 spaces
Additional patron parking	700 spaces
Total proposed patron parking	1400 spaces (structure)

- STATION PLAZA

VERTICAL CIRCULATION

TICKETING / ENTRY HALL

PLATFORM

ANCILLARY SPACES

TPSS
- BUS LAYOVER

BUS PICK-UP / DROP OFF

PARATRANSIT

BICYCLE STORAGE

CONSTRUCTION STAGING / PARKING

- STATION AREA FOOTPRINT

SIGNALIZED INTERSECTION (EXISTING)

SIGNALIZED INTERSECTION (PROPOSED)



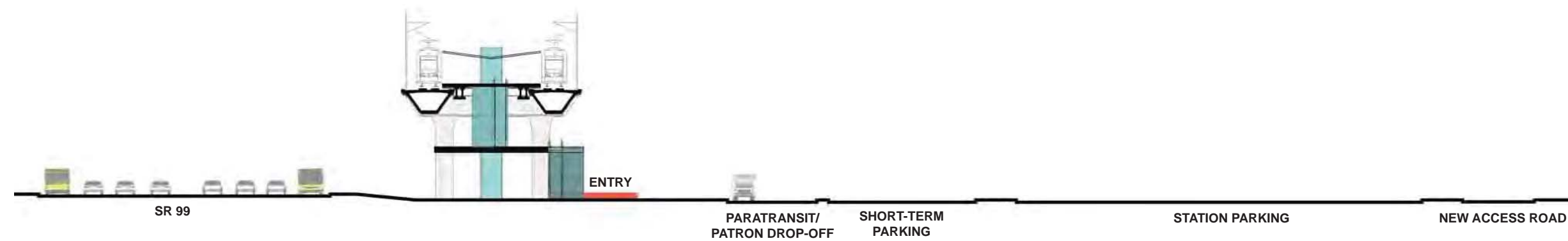
FINAL EIS - CONCEPTUAL DESIGN  
S 272ND REDONDO STATION  
SITE PLAN

AUGUST 2016

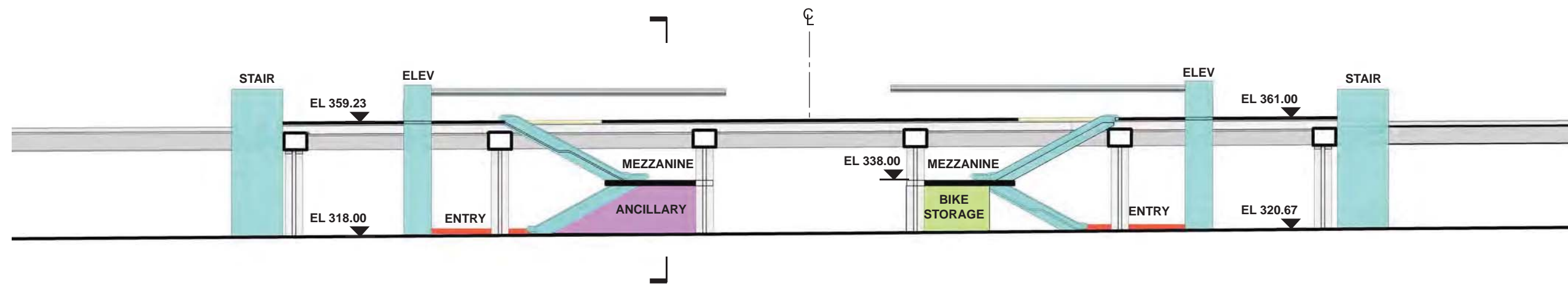
FWLE\_S99\_AP007  
82



SOUND TRANSIT FEDERAL WAY LINK EXTENSION



SECTION LOOKING NORTH



SECTION LOOKING EAST

- |                        |                                |
|------------------------|--------------------------------|
| STATION PLAZA          | BUS LAYOVER                    |
| VERTICAL CIRCULATION   | BUS PICK-UP / DROP OFF         |
| TICKETING / ENTRY HALL | PARATRANSIT                    |
| PLATFORM               | BICYCLE STORAGE                |
| ANCILLARY SPACES       | CONSTRUCTION STAGING / PARKING |
| TPSS                   |                                |



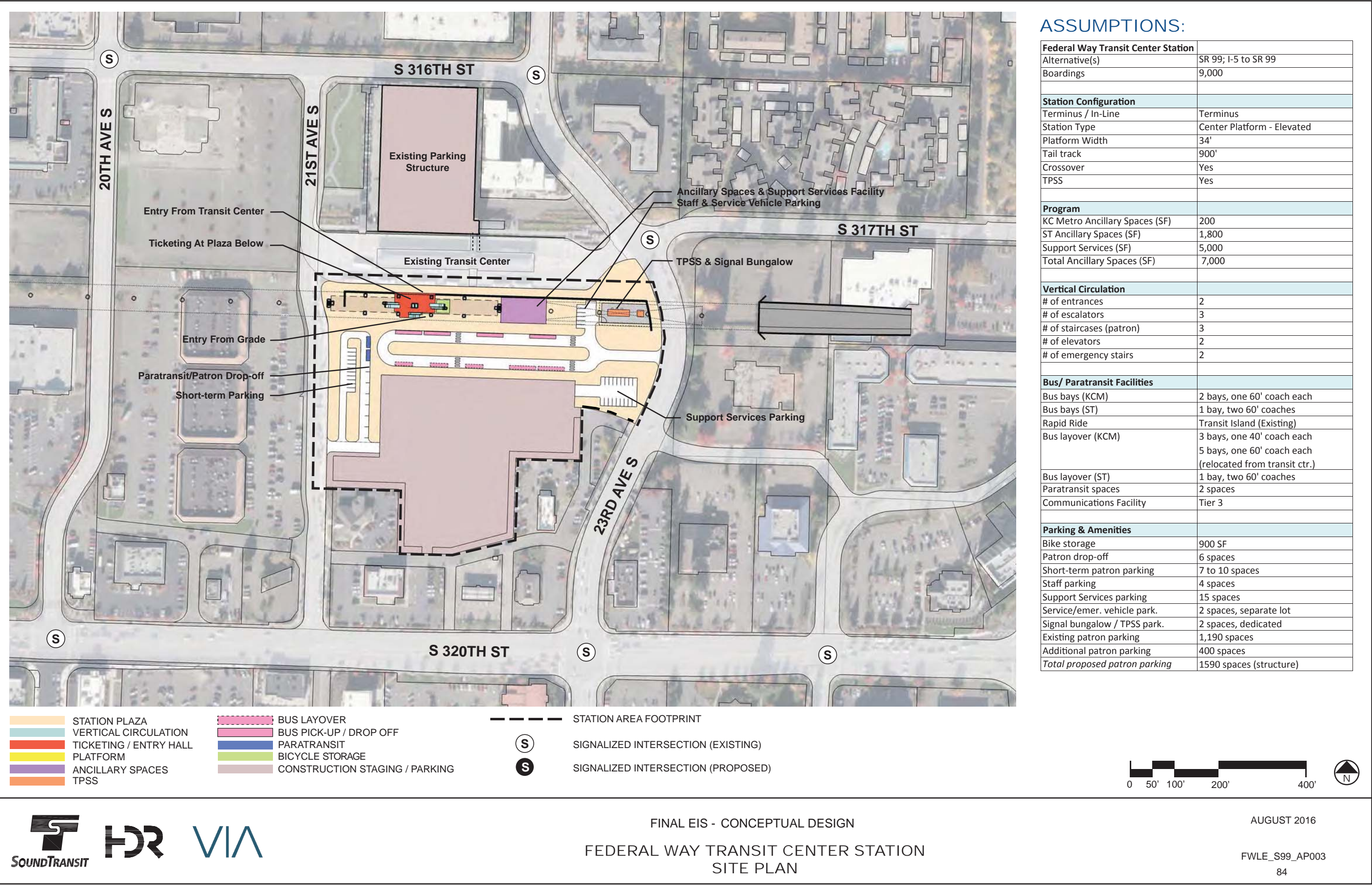
FINAL EIS - CONCEPTUAL DESIGN  
S 272ND REDONDO STATION  
SECTIONS

AUGUST 2016

FWLE\_S99\_AX007  
83

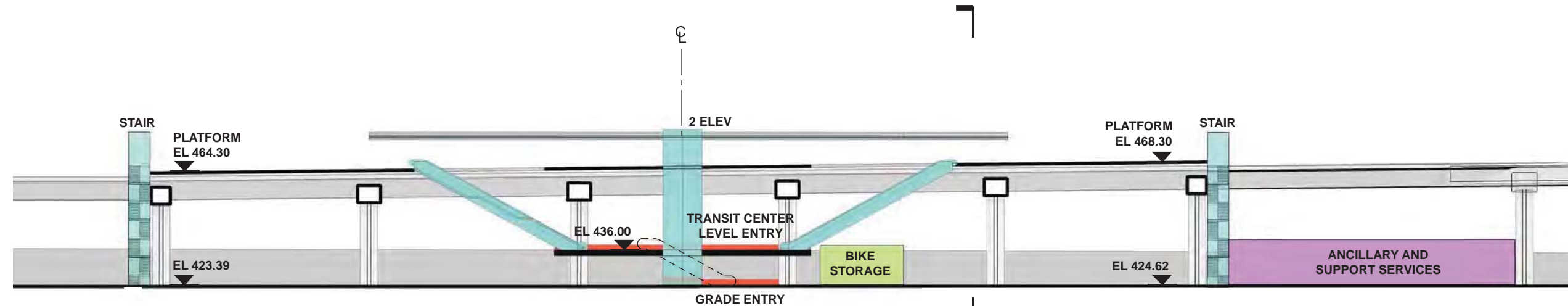
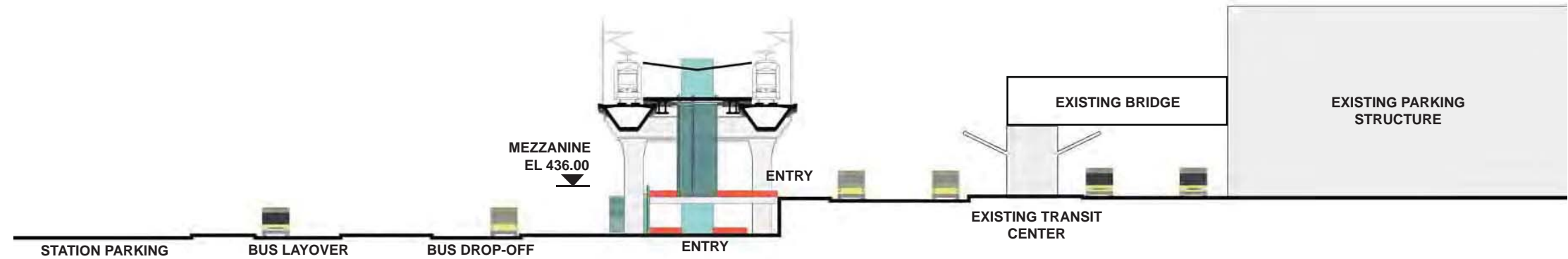


SOUND TRANSIT FEDERAL WAY LINK EXTENSION





SOUND TRANSIT FEDERAL WAY LINK EXTENSION



- |                        |                                |
|------------------------|--------------------------------|
| STATION PLAZA          | BUS LAYOVER                    |
| VERTICAL CIRCULATION   | BUS PICK-UP / DROP OFF         |
| TICKETING / ENTRY HALL | PARATRANSIT                    |
| PLATFORM               | BICYCLE STORAGE                |
| ANCILLARY SPACES       | CONSTRUCTION STAGING / PARKING |
| TPSS                   |                                |



FINAL EIS - CONCEPTUAL DESIGN  
FEDERAL WAY TRANSIT CENTER STATION  
SECTIONS

AUGUST 2016

FWLE\_S99\_AX003  
85