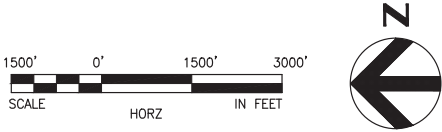


SOUND TRANSIT FEDERAL WAY LINK EXTENSION



SR99 SHEET LAYOUT MATRIX																
	1	2	3	4	5	6	7	8	9	10	11	12	13	14	15	16
A - SR 99 ALTERNATIVE	X	X	X	X	X	X	X	X	X	X	X	X	X	X	X	X
B - S 216TH WEST STATION OPTION (POTENTIAL ADDITIONAL STATION)	X	X	X													
C - S 216TH EAST STATION OPTION (POTENTIAL ADDITIONAL STATION)		X	X													
D - KENT/DES MOINES SR 99 MEDIAN STATION OPTION				X	X	X										
E - KENT/DES MOINES SR 99 EAST STATION OPTION				X	X	X	X									
F - KENT/DES MOINES HC CAMPUS STATION OPTION			X	X	X	X	X									
F - KDM HC CAMPUS OPTION FROM S 216TH WEST STATION OPTION						X	X	X	X	X						
G - S 260TH WEST STATION OPTION (POTENTIAL ADDITIONAL STATION)					X	X	X	X	X							
H - S 260TH EAST STATION OPTION (POTENTIAL ADDITIONAL STATION)							X	X	X	X						
J - S 272ND REDONDO TRENCH STATION OPTION								X	X	X	X	X	X	X		
K - FEDERAL WAY SR 99 STATION OPTION															X	X
I - NOT USED																



9/26/2016 3:06:31 PM  
C:\P\WORKING\SEA\011417\SR99-B00-GX02.DWG



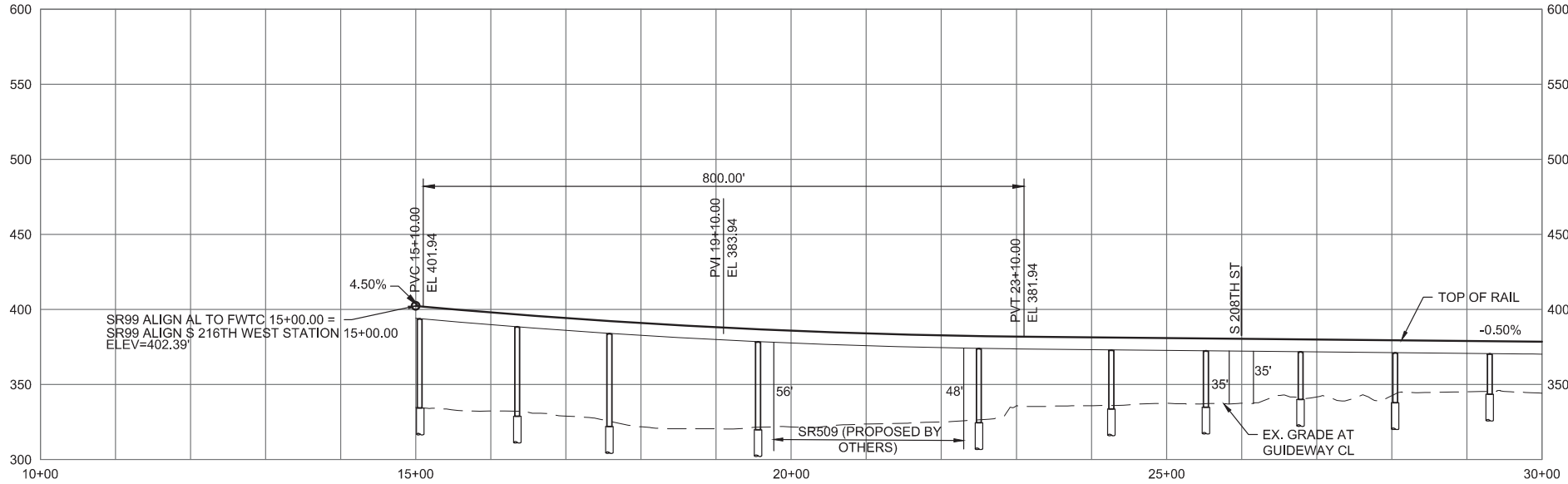
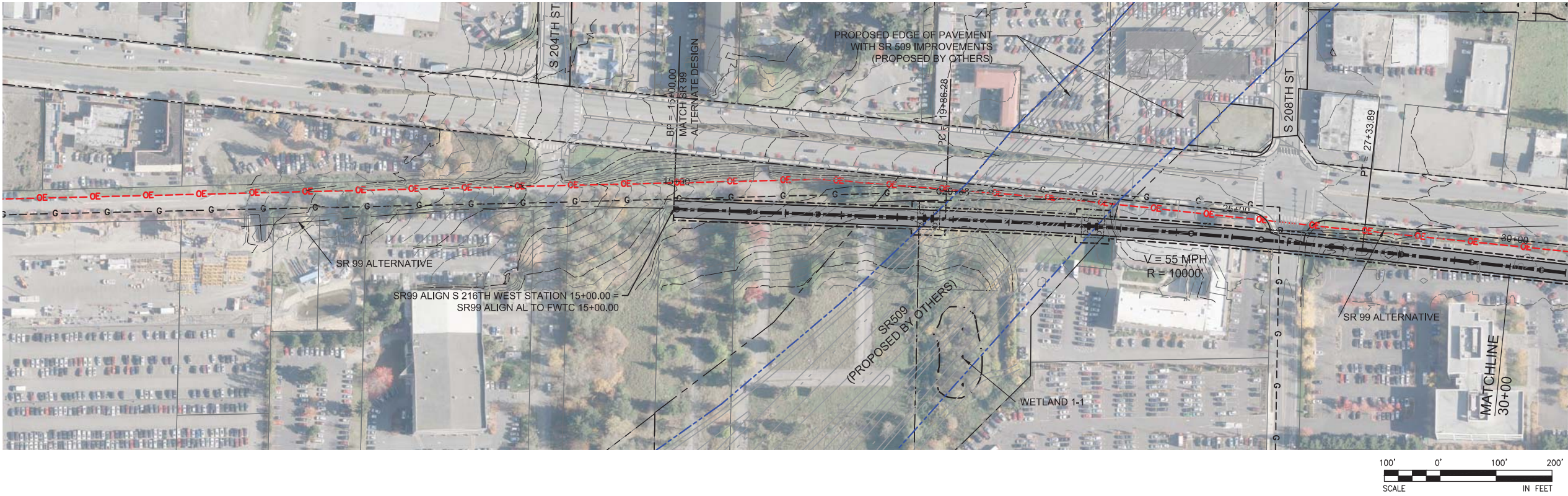
FINAL EIS - CONCEPTUAL DESIGN  
S 216TH WEST STATION OPTION (POTENTIAL ADDITIONAL STATION)  
SHEET INDEX KEYMAP

AUGUST 2016

SR99-B00-GX02  
86



SOUND TRANSIT FEDERAL WAY LINK EXTENSION



FINAL EIS - CONCEPTUAL DESIGN  
TRACK PLAN & PROFILE AND ROADWAY RECONSTRUCTION  
S 216TH WEST STATION OPTION (POTENTIAL ADDITIONAL STATION)  
STA 15+00 TO STA 30+00

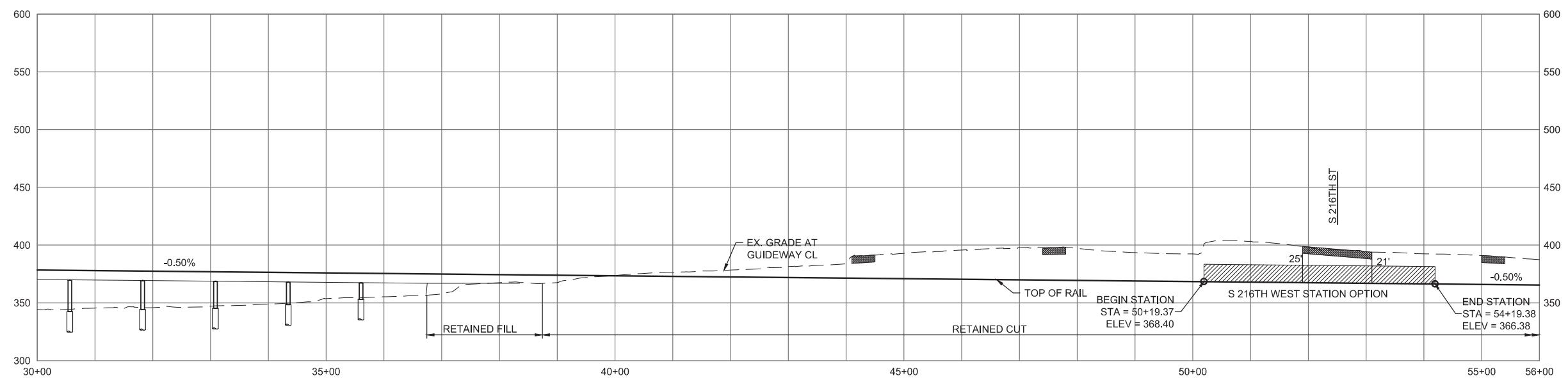
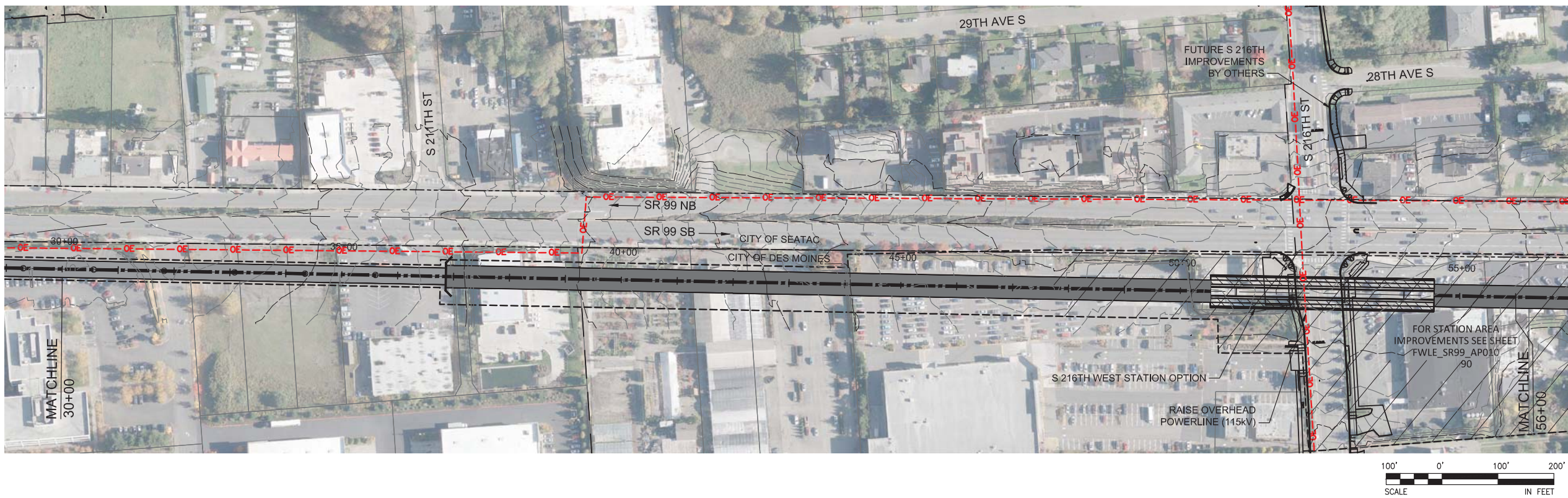
AUGUST 2016

SR99-B1-PP01  
87

10/3/2016 1:23:21 PM  
C:\P\WORKING\SEA\0114119\B\_S216TH WEST STATION.DWG



# SOUND TRANSIT FEDERAL WAY LINK EXTENSION



10/3/2016 1:23:45 PM  
C:\P\WORKING\SEA\0114119\B\_S216TH\_WEST\_STATION.DWG



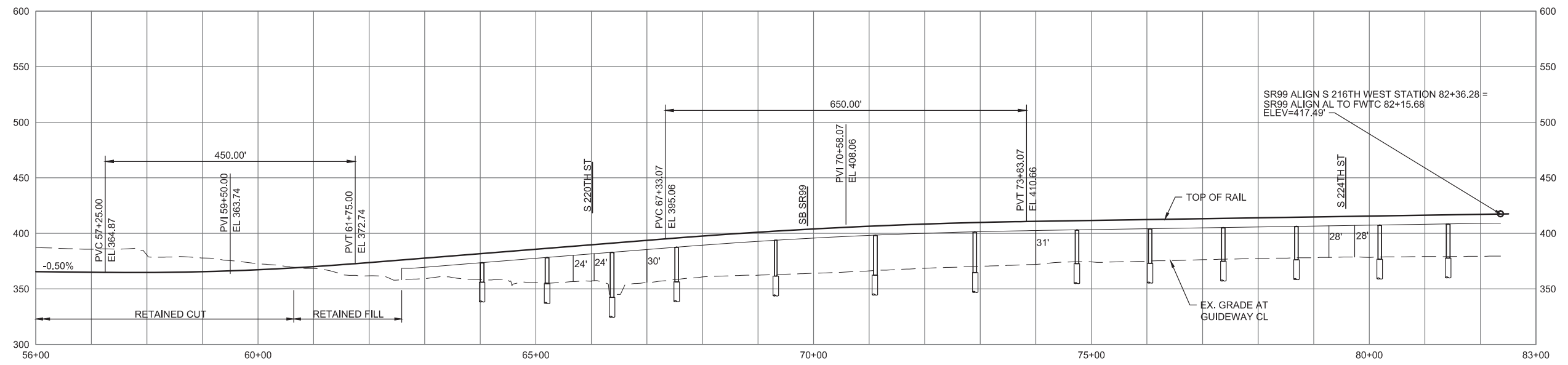
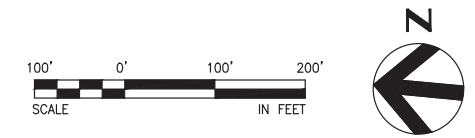
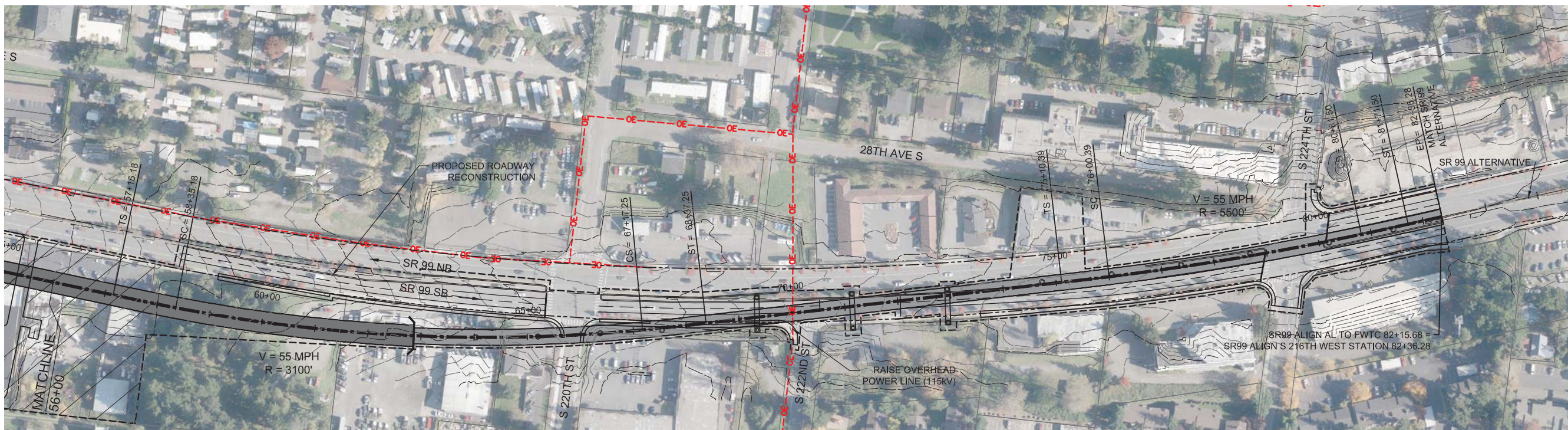
FINAL EIS - CONCEPTUAL DESIGN  
TRACK PLAN & PROFILE ROADWAY RECONSTRUCTION  
S 216TH WEST STATION OPTION (POTENTIAL ADDITIONAL STATION)  
STA 30+00 TO STA 56+00

AUGUST 2016

SR99-B2-PP02  
88



# SOUND TRANSIT FEDERAL WAY LINK EXTENSION



10/3/2016 1:24:04 PM  
C:\P\WORKING\SEA\0114119\B\_S216TH WEST STATION.DWG  
FOX



FINAL EIS - CONCEPTUAL DESIGN  
TRACK PLAN & PROFILE AND ROADWAY RECONSTRUCTION  
S 216TH WEST STATION OPTION (POTENTIAL ADDITIONAL STATION)  
STA 56+00 TO STA 83+36.28

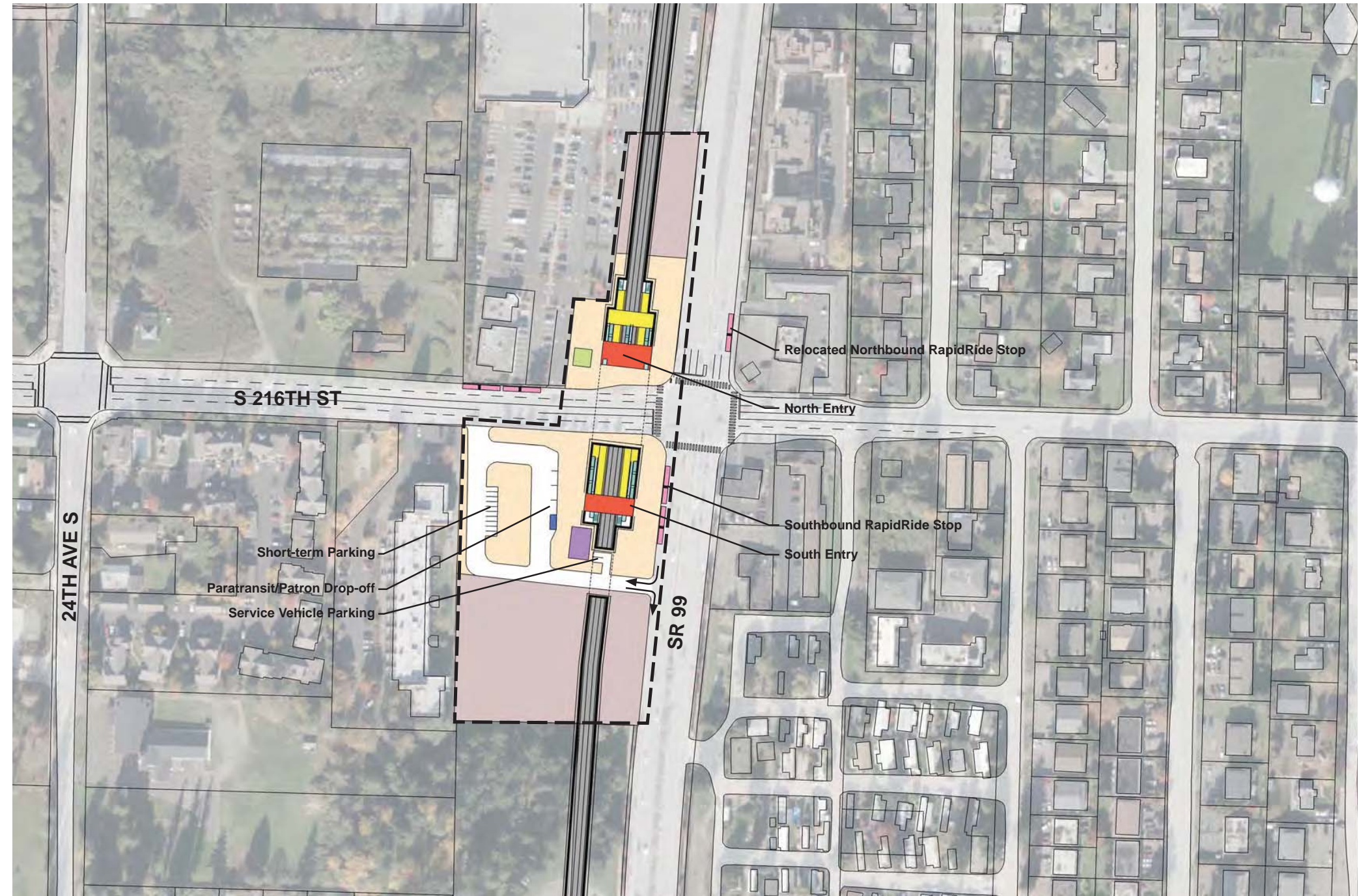
AUGUST 2016  
SR99-B3-PP03  
89



SOUND TRANSIT FEDERAL WAY LINK EXTENSION

ASSUMPTIONS:

<b>S 216th West Station Option</b>	
Alternative(s)	SR 99; SR 99 to I-5
Boardings	1,000
<b>Station Configuration</b>	
Terminus / In-Line	In-Line
Station Type	Side Platform - Trench
Platform Width	14'
Tail track	N/A
Crossover	No
TPSS	No
<b>Program</b>	
KC Metro Ancillary Spaces (SF)	N/A
ST Ancillary Spaces (SF)	1,200
Total Ancillary Spaces (SF)	1,200
<b>Vertical Circulation</b>	
# of entrances	2
# of escalators	5
# of staircases (patron)	5
# of elevators	4
# of emergency stairs	4
<b>Bus/ Paratransit Facilities</b>	
Bus bays (KCM)	1 bay southbound at SR 99, two 60' coaches; 1 bay westbound at S 216th, two 60' coaches
Bus bays (ST)	N/A
Rapid Ride	On-street at SR 99
Bus layover (KCM)	N/A
Bus layover (ST)	N/A
Paratransit	1 space
Communications Facility	Tier 2
<b>Parking &amp; Amenities</b>	
Bike storage	900 SF
Patron drop-off	2 spaces
Short-term patron parking	7 to 10 spaces
Staff parking	N/A
Service/emerg. vehicle park.	2 spaces, combined
Signal bungalow / TPSS park.	N/A
Patron parking	N/A

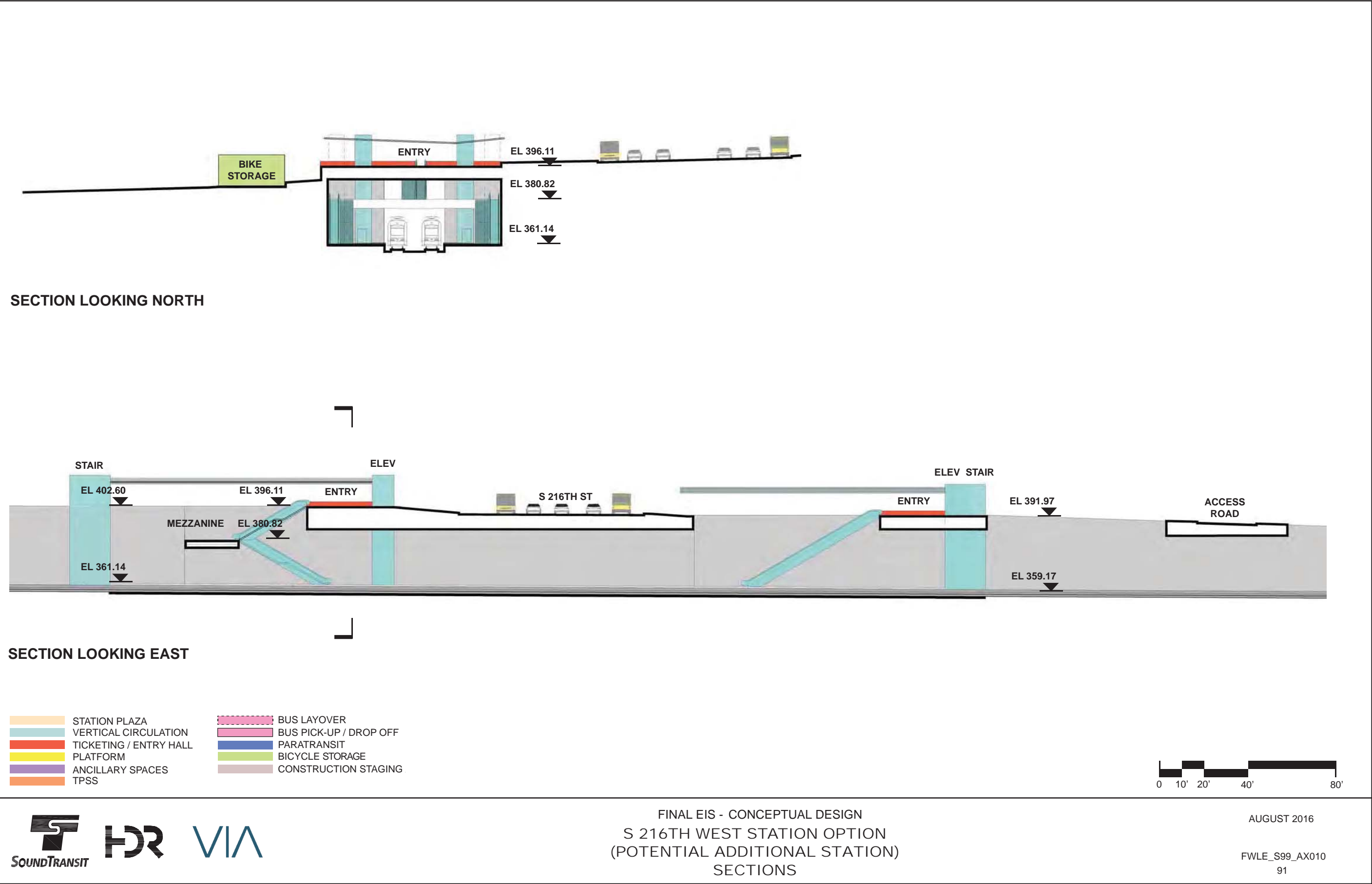


FINAL EIS - CONCEPTUAL DESIGN  
S 216TH WEST STATION OPTION  
(POTENTIAL ADDITIONAL STATION)  
SITE PLAN

AUGUST 2016

FWLE\_S99\_AP010  
90

SOUND TRANSIT FEDERAL WAY LINK EXTENSION

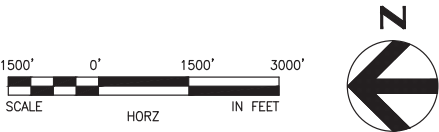




SOUND TRANSIT FEDERAL WAY LINK EXTENSION



SR99 SHEET LAYOUT MATRIX																
	1	2	3	4	5	6	7	8	9	10	11	12	13	14	15	16
A - SR 99 ALTERNATIVE	X	X	X	X	X	X	X	X	X	X	X	X	X	X	X	X
B - S 216TH WEST STATION OPTION (POTENTIAL ADDITIONAL STATION)	X	X	X													
C - S 216TH EAST STATION OPTION (POTENTIAL ADDITIONAL STATION)		X	X													
D - KENT/DES MOINES SR 99 MEDIAN STATION OPTION				X	X	X										
E - KENT/DES MOINES SR 99 EAST STATION OPTION				X	X	X	X									
F - KENT/DES MOINES HC CAMPUS STATION OPTION			X	X	X	X	X									
F - KDM HC CAMPUS OPTION FROM S 216TH WEST STATION OPTION						X	X	X	X	X						
G - S 260TH WEST STATION OPTION (POTENTIAL ADDITIONAL STATION)					X	X	X	X	X							
H - S 260TH EAST STATION OPTION (POTENTIAL ADDITIONAL STATION)							X	X	X	X						
J - S 272ND REDONDO TRENCH STATION OPTION							X	X	X	X	X	X	X			
K - FEDERAL WAY SR 99 STATION OPTION															X	X



9/26/2016 3:06:33 PM  
C:\P\WORKING\SEA\011417\SR99-C00-GX02.DWG



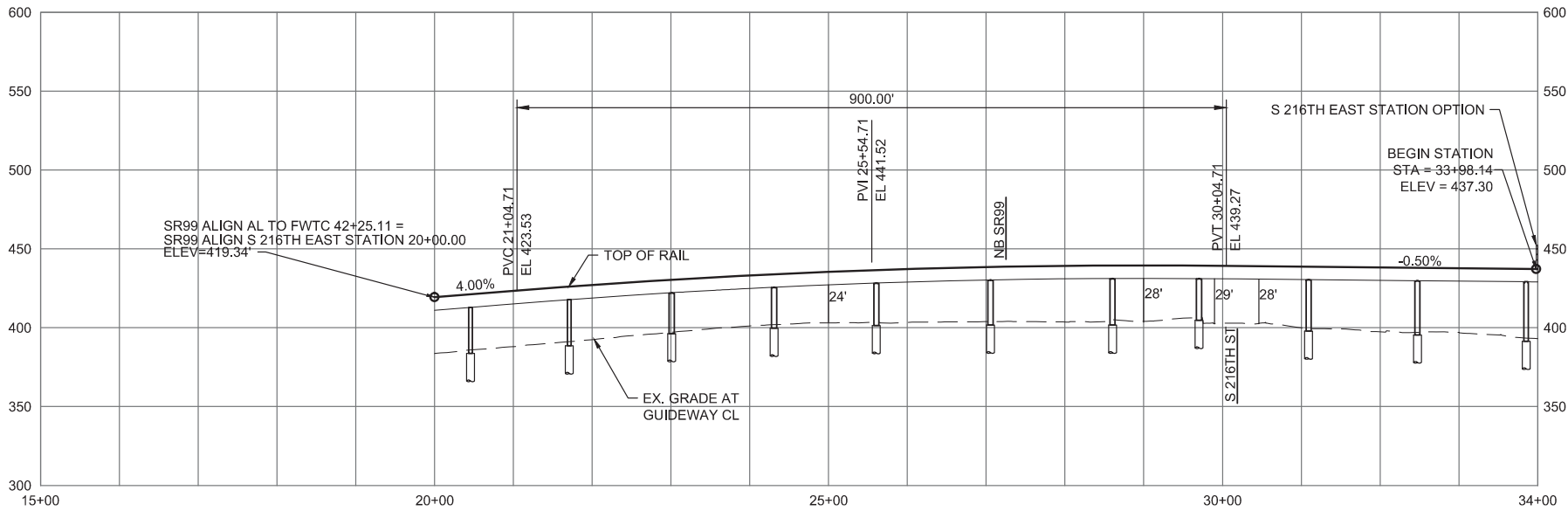
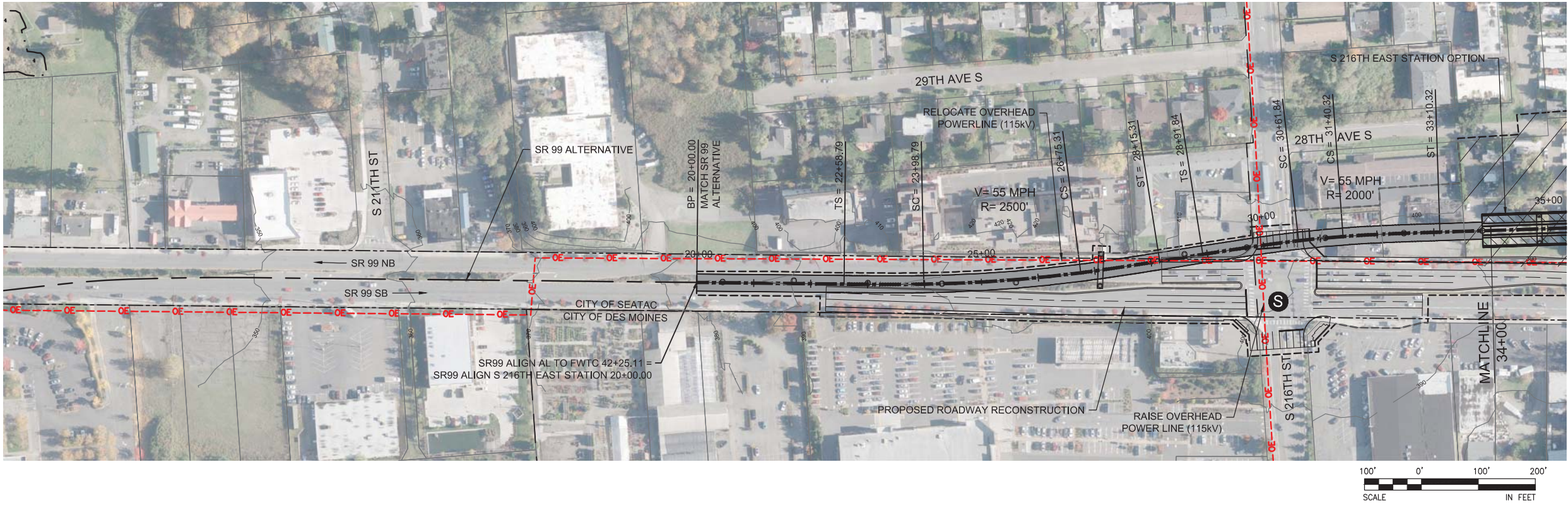
FINAL EIS - CONCEPTUAL DESIGN  
S 216TH EAST STATION OPTION (POTENTIAL ADDITIONAL STATION)  
SHEET INDEX KEYMAP

AUGUST 2016

SR99-C00-GX02  
92



SOUND TRANSIT FEDERAL WAY LINK EXTENSION



9/26/2016 4:21:55 PM  
C:\P\WORKING\SEA\0114119\C\_S216TH\_EAST\_STATION.DWG

FOXC



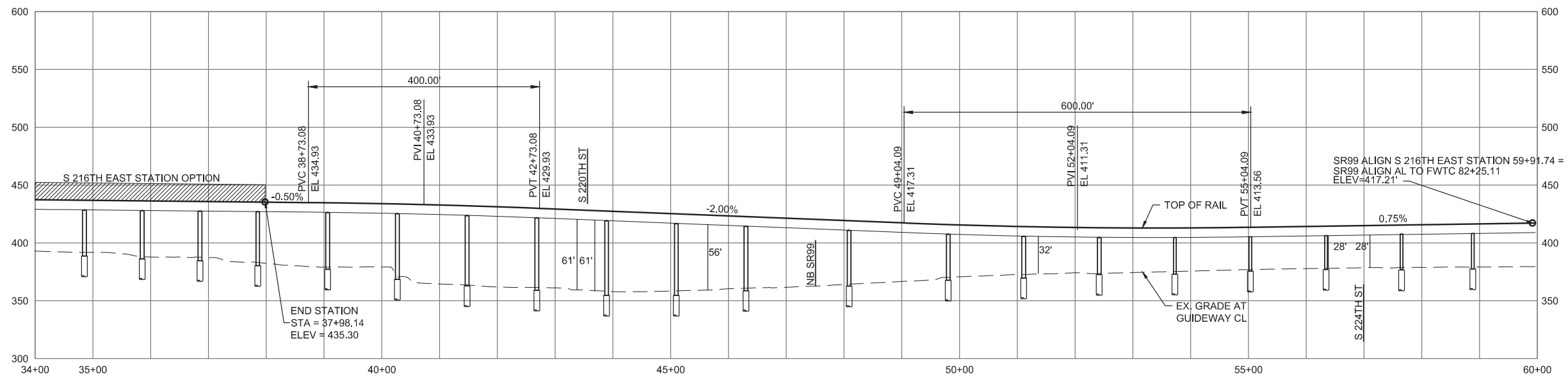
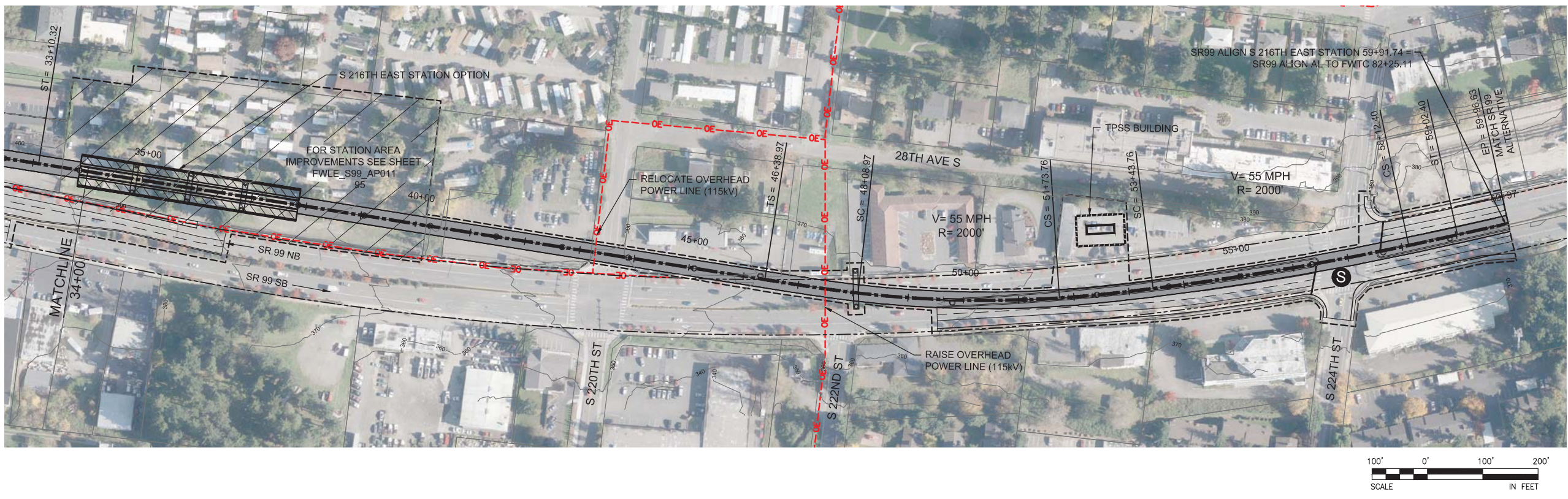
FINAL EIS - CONCEPTUAL DESIGN  
TRACK PLAN & PROFILE AND ROADWAY RECONSTRUCTION  
S 216TH EAST STATION OPTION (POTENTIAL ADDITIONAL STATION)  
STA 20+00 TO STA 34+00

AUGUST 2016

SR99-C1-PP02  
93



SOUND TRANSIT FEDERAL WAY LINK EXTENSION



10/3/2016 1:30:58 PM  
C:\P\WORKING\SEA\0114119\C\_5216TH\_EAST\_STATION.DWG  
FOX



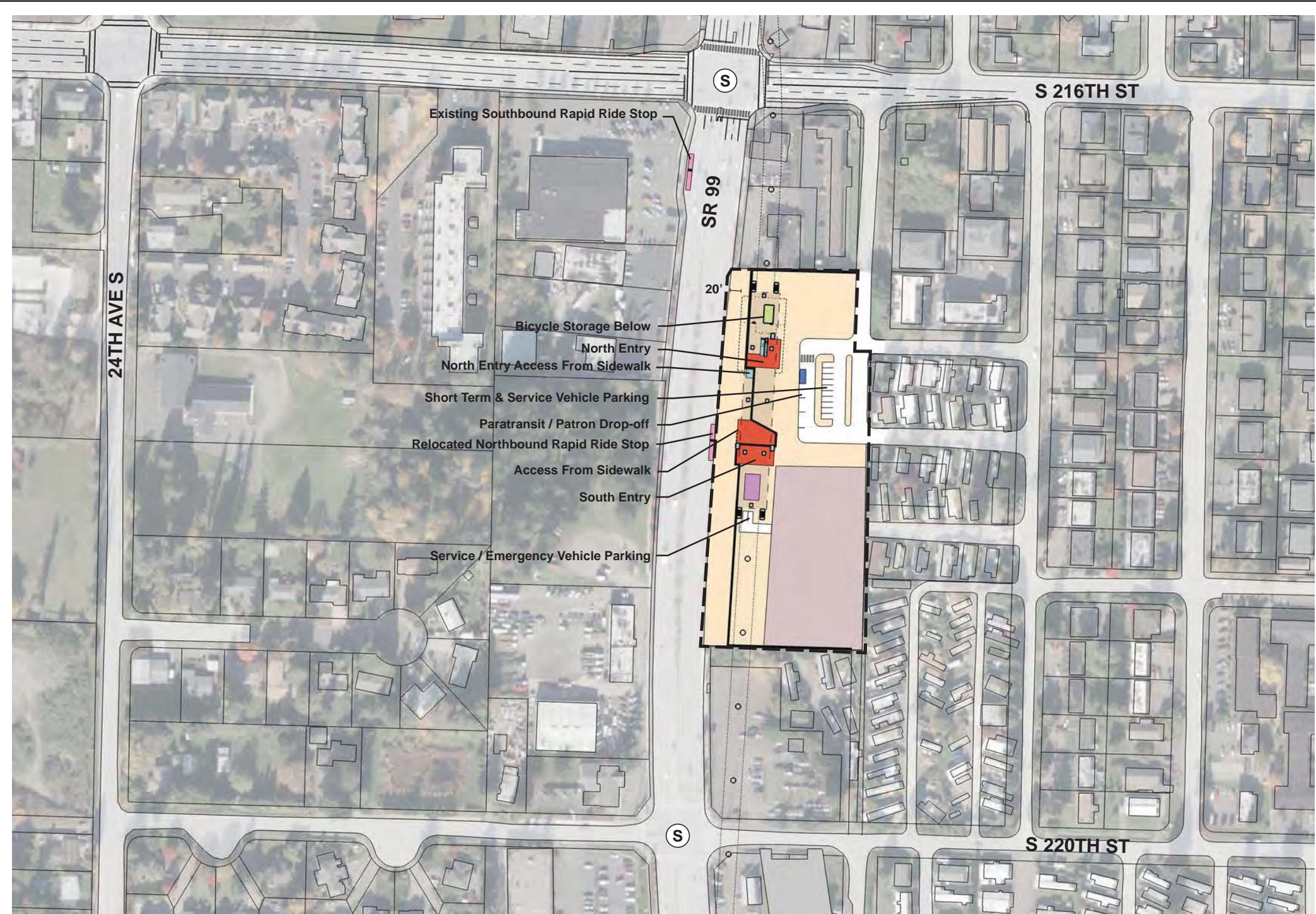
FINAL EIS - CONCEPTUAL DESIGN  
TRACK PLAN & PROFILE AND ROADWAY RECONSTRUCTION  
S 216TH EAST STATION OPTION (POTENTIAL ADDITIONAL STATION)  
STA 34+00 TO STA 59+91.74

AUGUST 2016

SR99-C2-PP03  
94



SOUND TRANSIT FEDERAL WAY LINK EXTENSION



- STATION PLAZA

VERTICAL CIRCULATION

TICKETING / ENTRY HALL

PLATFORM

ANCILLARY SPACES

TPSS
- BUS LAYOVER

BUS PICK-UP / DROP OFF

PARATRANSIT

BICYCLE STORAGE

CONSTRUCTION STAGING

- STATION AREA FOOTPRINT

S

SIGNALIZED INTERSECTION (EXISTING)

S

SIGNALIZED INTERSECTION (PROPOSED)

ASSUMPTIONS:

S 216th East Station Option	
Alternative(s)	SR 99; SR 99 to I-5
Boardings	1,000
Station Configuration	
Terminus / In-Line	In-Line
Station Type	Side Platform - Elevated
Platform Width	14'
Tail track	N/A
Crossover	TBD
TPSS	No
Program	
KC Metro Ancillary Spaces (SF)	N/A
ST Ancillary Spaces (SF)	1,200
Total Ancillary Spaces (SF)	1,200
Vertical Circulation	
# of entrances	2
# of escalators	3
# of staircases (patron)	3
# of elevators	5
# of emergency stairs	4
Bus/ Paratransit Facilities	
Bus bays (KCM)	1 bay southbound at SR 99, two 60' coaches; 1 bay westbound at S 216th, two 60' coaches
Bus bays (ST)	N/A
Rapid Ride	On-street at SR 99
Bus layover (KCM)	N/A
Bus layover (ST)	N/A
Paratransit	1 space
Communications Facility	Tier 2
Parking & Amenities	
Bike storage	900 SF
Patron drop-off	2 spaces
Short-term patron parking	7 to 10 spaces
Staff parking	N/A
Service/emerg. vehicle park.	2 spaces, combined
Signal bungalow / TPSS park.	N/A
Patron parking	N/A



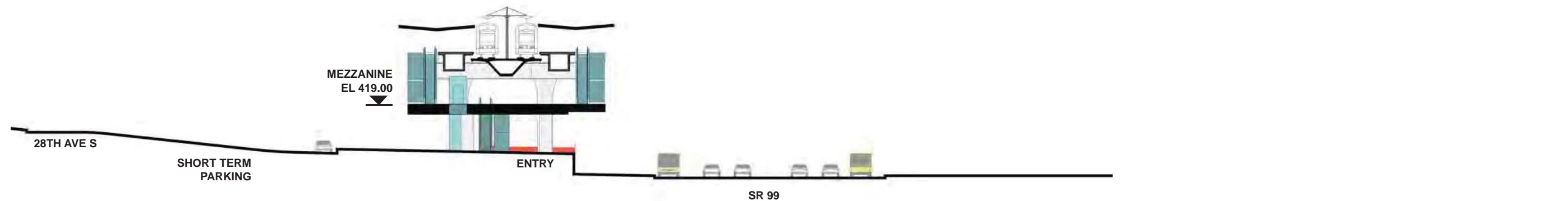
FINAL EIS - CONCEPTUAL DESIGN  
S 216TH EAST STATION OPTION  
(POTENTIAL ADDITIONAL STATION)  
SITE PLAN

AUGUST 2016

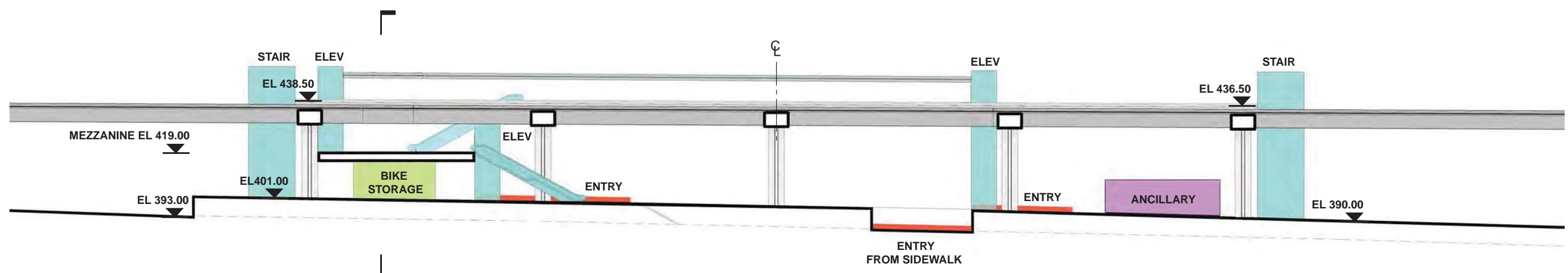
FWLE\_S99\_AP011  
95



SOUND TRANSIT FEDERAL WAY LINK EXTENSION

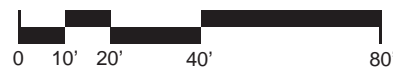


SECTION LOOKING SOUTH



SECTION LOOKING EAST

- |                        |                        |
|------------------------|------------------------|
| STATION PLAZA          | BUS LAYOVER            |
| VERTICAL CIRCULATION   | BUS PICK-UP / DROP OFF |
| TICKETING / ENTRY HALL | PARATRANSIT            |
| PLATFORM               | BICYCLE STORAGE        |
| ANCILLARY SPACES       | CONSTRUCTION STAGING   |
| TPSS                   |                        |



FINAL EIS - CONCEPTUAL DESIGN  
S 216TH EAST STATION OPTION  
(POTENTIAL ADDITIONAL STATION)  
SECTION

AUGUST 2016

FWLE\_S99\_AX011  
96