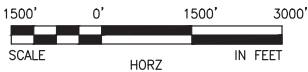


SOUND TRANSIT FEDERAL WAY LINK EXTENSION



SR99 SHEET LAYOUT MATRIX																
	1	2	3	4	5	6	7	8	9	10	11	12	13	14	15	16
A - SR 99 ALTERNATIVE	X	X	X	X	X	X	X	X	X	X	X	X	X	X	X	X
B - S 216TH WEST STATION OPTION (POTENTIAL ADDITIONAL STATION)	X	X	X													
C - S 216TH EAST STATION OPTION (POTENTIAL ADDITIONAL STATION)		X	X													
D - KENT/DES MOINES SR 99 MEDIAN STATION OPTION				X	X	X										
E - KENT/DES MOINES SR 99 EAST STATION OPTION				X	X	X	X									
F - KENT/DES MOINES HC CAMPUS STATION OPTION			X	X	X	X	X									
F - KDM HC CAMPUS OPTION FROM S 216TH WEST STATION OPTION						X	X	X	X	X						
G - S 260TH WEST STATION OPTION (POTENTIAL ADDITIONAL STATION)					X	X	X	X	X							
H - S 260TH EAST STATION OPTION (POTENTIAL ADDITIONAL STATION)							X	X	X	X						
J - S 272ND REDONDO TRENCH STATION OPTION							X	X	X	X	X	X	X			
K - FEDERAL WAY SR 99 STATION OPTION															X	X

I - NOT USED



9/26/2016 3:06:36 PM  
C:\P\WORKING\SEA\011417\SR99-D00-GX02.DWG

FOXC



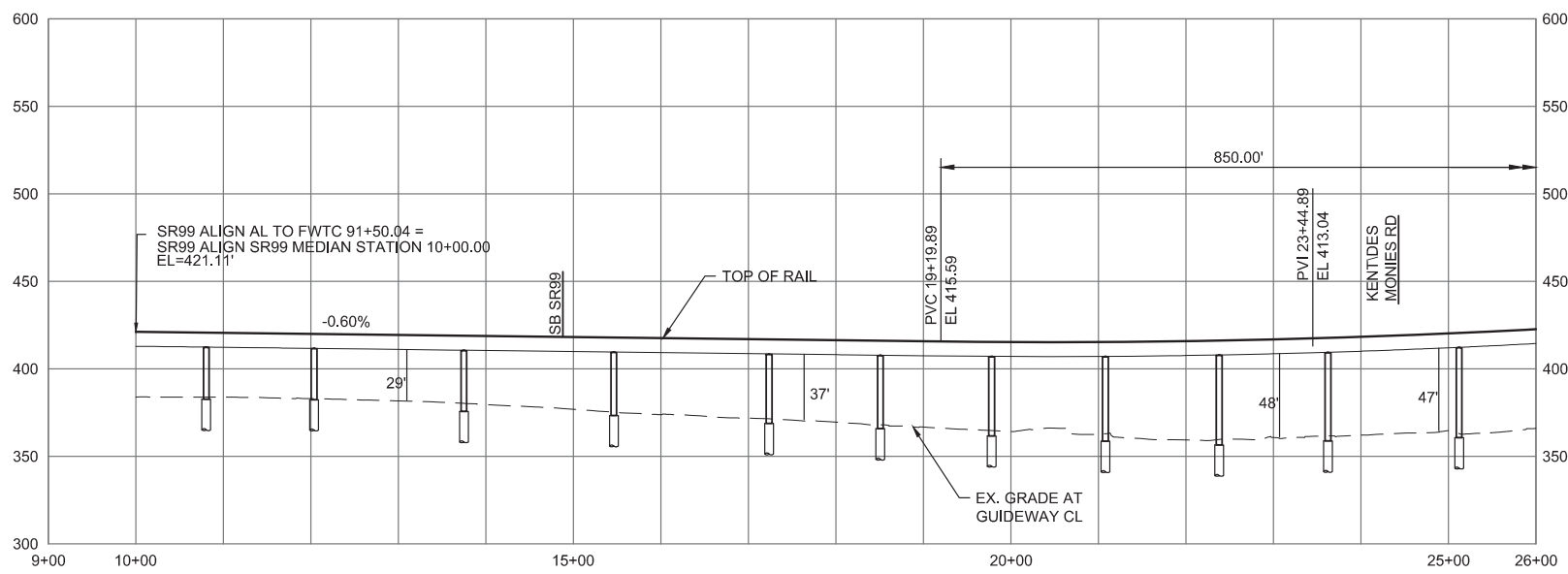
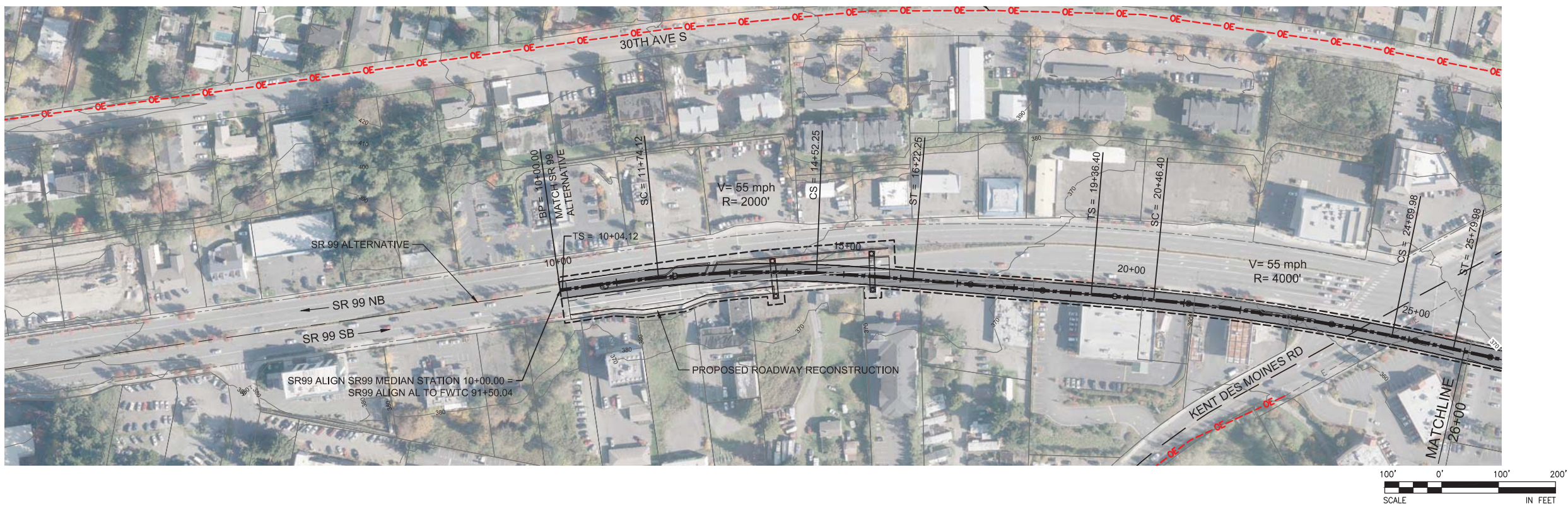
FINAL EIS - CONCEPTUAL DESIGN  
KENT / DES MOINES SR 99 MEDIAN STATION OPTION  
SHEET INDEX KEYMAP

AUGUST 2016

SR99-D00-GX02  
97



SOUND TRANSIT FEDERAL WAY LINK EXTENSION



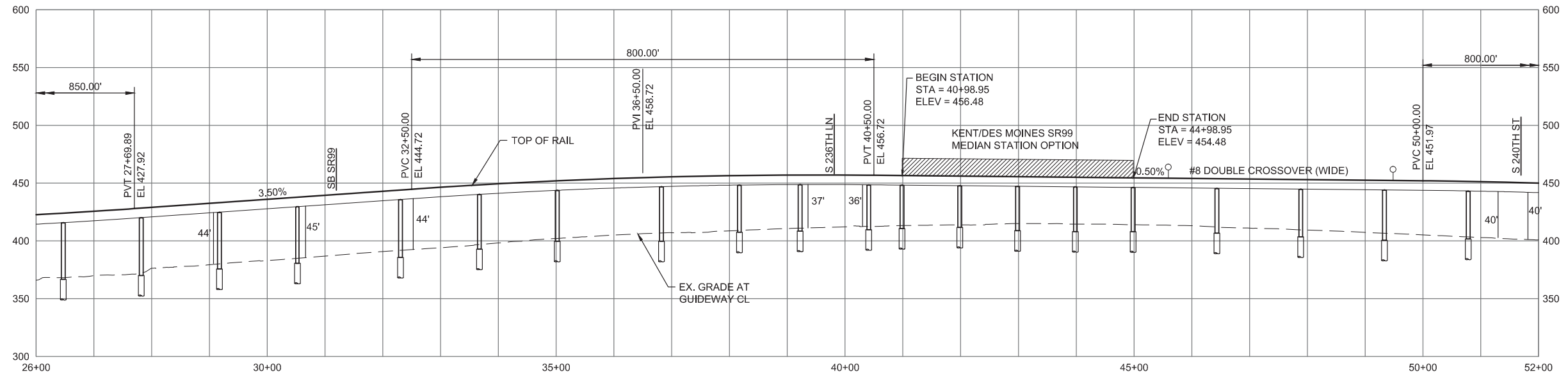
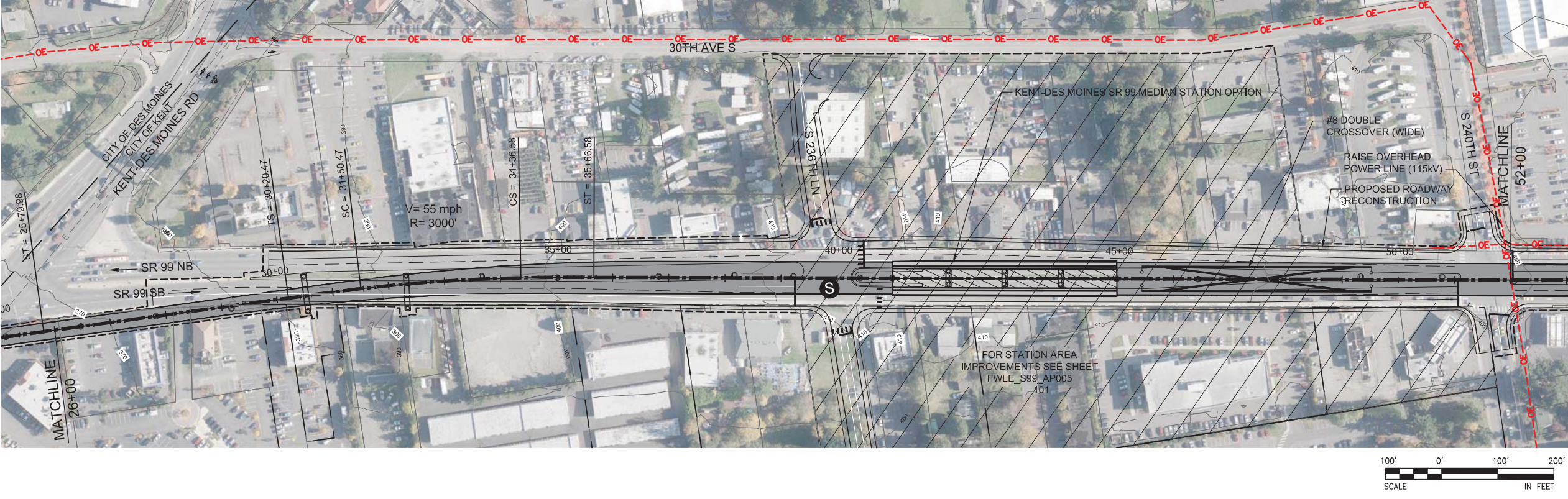
FINAL EIS - CONCEPTUAL DESIGN  
TRACK PLAN AND PROFILE  
KENT/DES MOINES SR 99 MEDIAN STATION OPTION  
STA 10+00 TO STA 26+00

AUGUST 2016

SR99-D1-PP04  
98



# SOUND TRANSIT FEDERAL WAY LINK EXTENSION



9/26/2016 4:23:41 PM  
C:\P\WORKING\SEA\114119D\_KENT DES-MOINES MEDIAN STATION.DWG

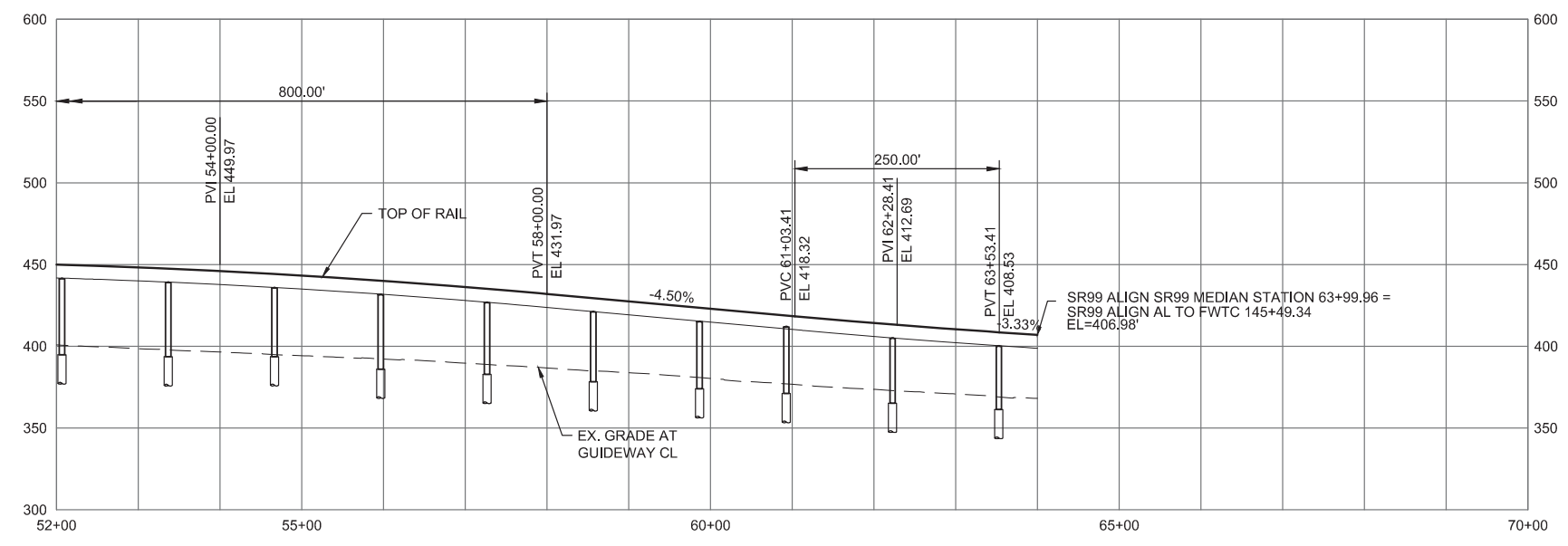
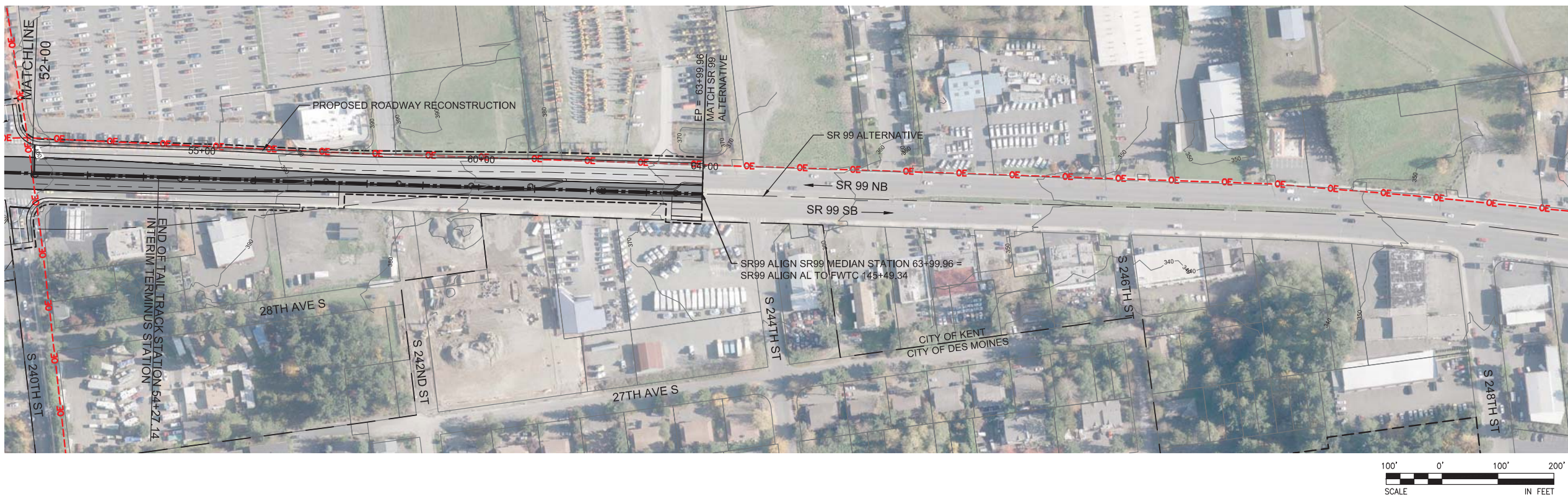


FINAL EIS - CONCEPTUAL DESIGN  
TRACK PLAN AND PROFILE  
KENT/DES MOINES SR 99 MEDIAN STATION OPTION  
STA 26+00 TO STA 52+00

AUGUST 2016  
SR99-D2-PP05  
99



SOUND TRANSIT FEDERAL WAY LINK EXTENSION



9/26/2016 4:23:59 PM  
C:\P\WORKING\SEA\114119D\_KENT DES MOINES MEDIAN STATION.DWG  
FOXC



FINAL EIS - CONCEPTUAL DESIGN  
TRACK PLAN AND PROFILE  
KENT/DES MOINES SR 99 MEDIAN STATION OPTION  
STA 52+00 TO STA 63+99.96

AUGUST 2016  
SR99-D3-PP06  
100



# SOUND TRANSIT FEDERAL WAY LINK EXTENSION



ASSUMPTIONS:

<b>Kent/Des Moines SR 99 Median Station Option</b>	
Alternative(s):	SR 99
Boardings	3,000
Boardings (with 216th Station)	2,500
Boardings (interim terminus)	4,500

<b>Station Configuration</b>	
Terminus / In-Line	Interim Terminus
Station Type	Center Platform - Elevated
Platform Width	34'
Tail track	900'
Crossover	Yes
TPSS	Yes

Program	
KC Metro Ancillary Spaces (SF)	200
ST Ancillary Spaces (SF)	1,800
Total Ancillary Spaces (SF)	2,000

Vertical Circulation	
# of entrances	2
# of escalators	4
# of staircases (patron)	4
# of elevators	2
# of emergency stairs	2

<b>Bus/ Paratransit Facilities</b>	
Bus bays (KCM)	2 bays, one 60' coach each
Bus bays (ST)	1 bay, two 60' coaches
Rapid Ride	On-street at SR 99
Bus layover (KCM)	2 bays, two 60' coaches each
Bus layover (ST)	1 bay, two 60' coaches
Paratransit	1 permanent, 1 interim
Communications Facility	Tier 2

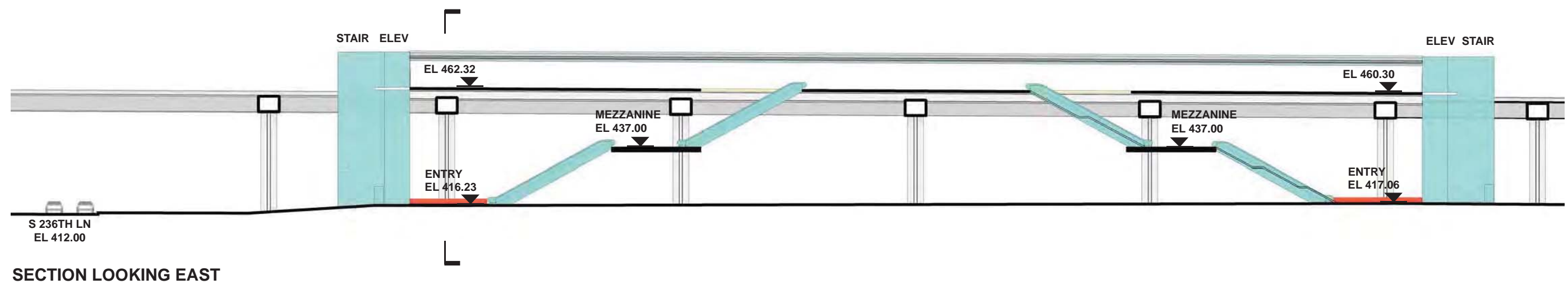
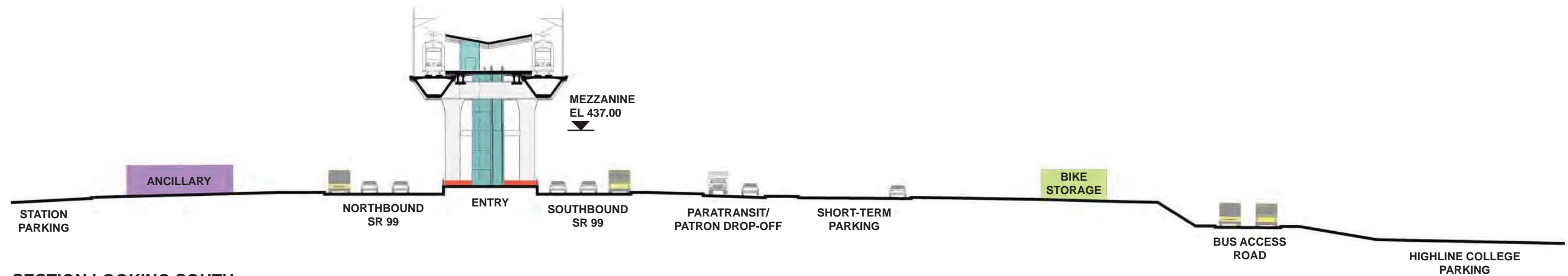
<b>Parking &amp; Amenities</b>	
Bike storage	900 SF
Patron drop-off	6 spaces
Short-term parking	7 to 10 spaces
Staff parking	4 spaces
Service/emerg. vehicle park.	2 spaces, separate lot
Signal bungalow / TPSS park.	2 spaces, dedicated
Long-term patron parking	500 spaces (structure)
Temporary patron parking*	500 spaces (surface)
<i>Total proposed patron parking*</i>	1000 Spaces

\*Only required for interim terminus condition





SOUND TRANSIT FEDERAL WAY LINK EXTENSION



- |                        |                                |
|------------------------|--------------------------------|
| STATION PLAZA          | BUS LAYOVER                    |
| VERTICAL CIRCULATION   | BUS PICK-UP / DROP OFF         |
| TICKETING / ENTRY HALL | PARATRANSIT                    |
| PLATFORM               | BICYCLE STORAGE                |
| ANCILLARY SPACES       | CONSTRUCTION STAGING / PARKING |
| TPSS                   |                                |



FNAL EIS - CONCEPTUAL DESIGN  
KENT/DES MOINES SR 99 MEDIAN STATION OPTION  
SECTIONS

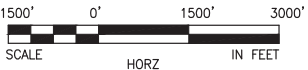
AUGUST 2016

FWLE\_S99\_AX005  
102

SOUND TRANSIT FEDERAL WAY LINK EXTENSION



SR99 SHEET LAYOUT MATRIX																
	1	2	3	4	5	6	7	8	9	10	11	12	13	14	15	16
A - SR 99 ALTERNATIVE	X	X	X	X	X	X	X	X	X	X	X	X	X	X	X	X
B - S 216TH WEST STATION OPTION (POTENTIAL ADDITIONAL STATION)	X	X	X													
C - S 216TH EAST STATION OPTION (POTENTIAL ADDITIONAL STATION)		X	X													
D - KENT/DES MOINES SR 99 MEDIAN STATION OPTION				X	X	X										
E - KENT/DES MOINES SR 99 EAST STATION OPTION				X	X	X	X									
F - KENT/DES MOINES HC CAMPUS STATION OPTION			X	X	X	X	X									
F - KDM HC CAMPUS OPTION FROM S 216TH WEST STATION OPTION						X	X	X	X	X						
G - S 260TH WEST STATION OPTION (POTENTIAL ADDITIONAL STATION)					X	X	X	X	X							
H - S 260TH EAST STATION OPTION (POTENTIAL ADDITIONAL STATION)							X	X	X	X						
J - S 272ND REDONDO TRENCH STATION OPTION								X	X	X	X	X	X	X		
K - FEDERAL WAY SR 99 STATION OPTION															X	X



FINAL EIS - CONCEPTUAL DESIGN  
KENT / DES MOINES SR 99 EAST STATION OPTION  
SHEET INDEX KEYMAP

AUGUST 2016

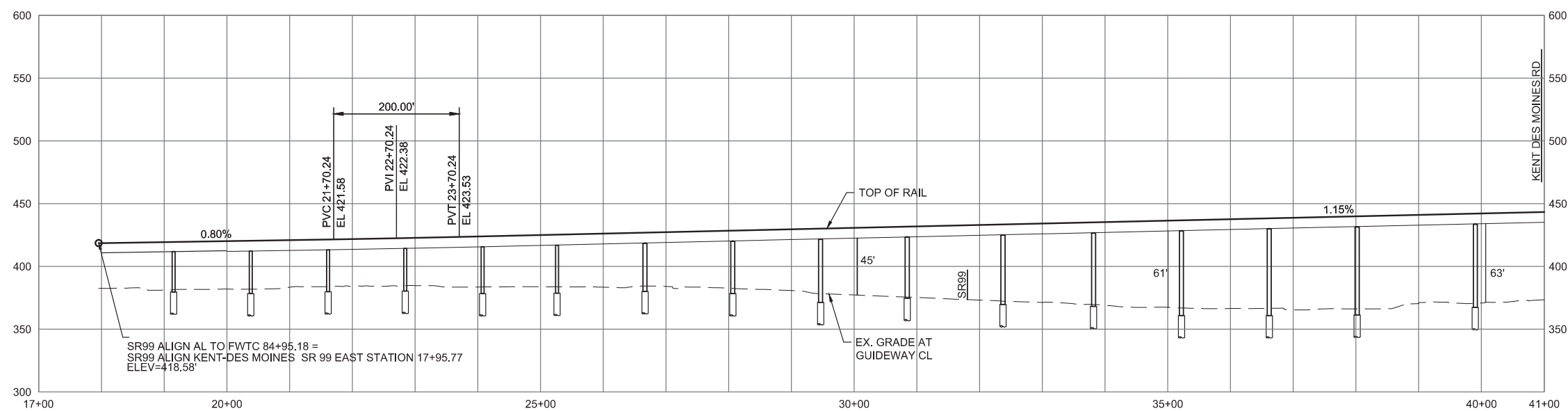
SR99-E00-GX02  
103

9/26/2016 3:06:38 PM  
C:\P\WORKING\SEA\011417\SR99-E00-GX02.DWG

FOXC



# SOUND TRANSIT FEDERAL WAY LINK EXTENSION



9/26/2016 4:24:59 PM  
C:\P\WORKING\SEA\1141191\_KENT DES MOINES SR 99 EAST STATION.DWG



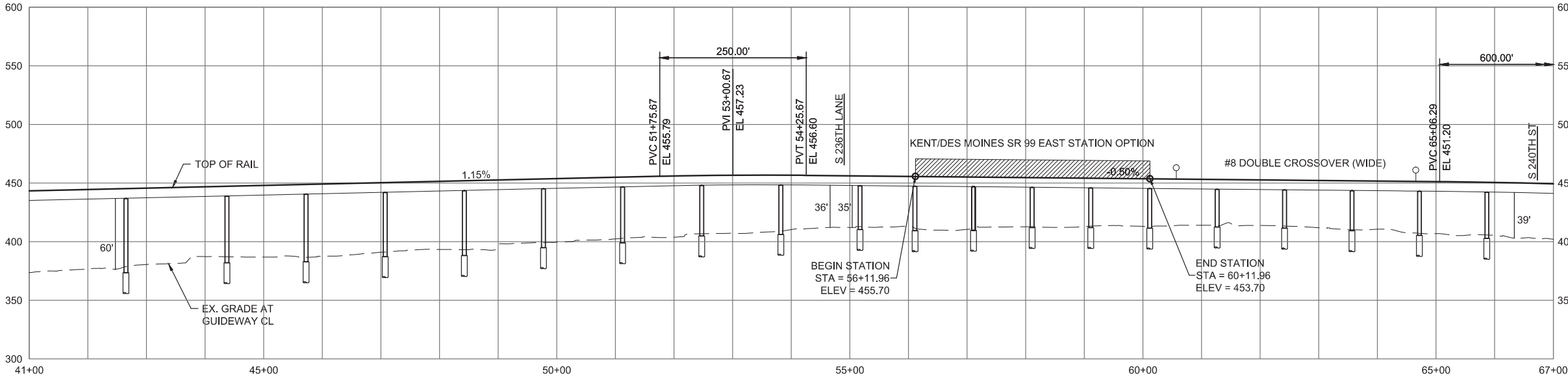
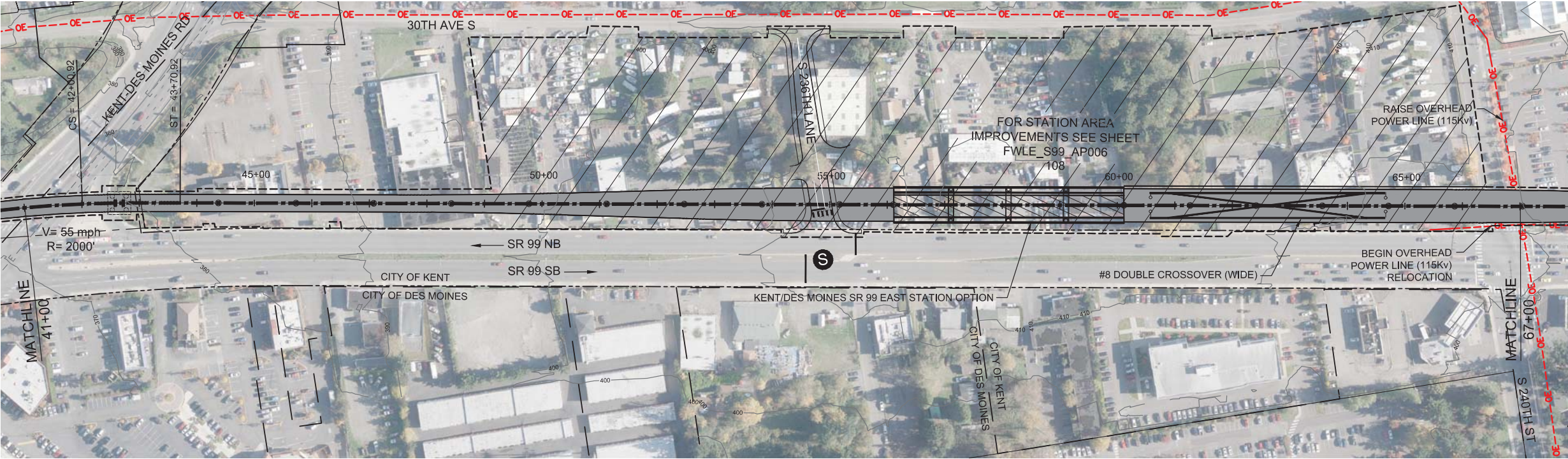
FINAL EIS - CONCEPTUAL DESIGN  
TRACK PLAN & PROFILE AND ROADWAY RECONSTRUCTION  
KENT/DES MOINES SR 99 EAST STATION OPTION  
STA 17+95.77 TO STA 41+00

AUGUST 2016

SR99-E1-PP04  
104



# SOUND TRANSIT FEDERAL WAY LINK EXTENSION



9/26/2016 4:25:18 PM  
C:\P\WORKING\SEA\1141191\ KENT DES-MOINES SR 99 EAST STATION.DWG

FOXC



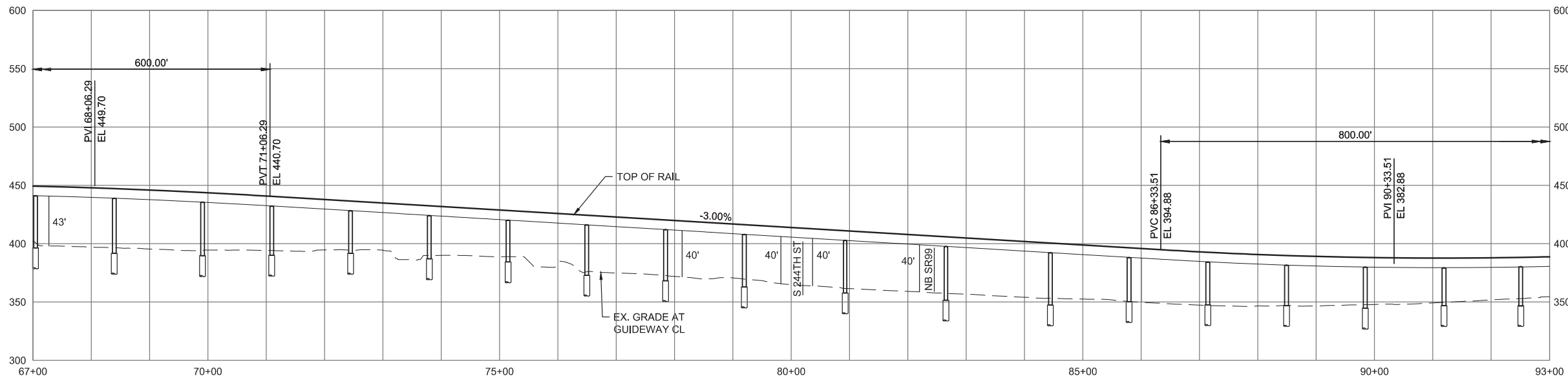
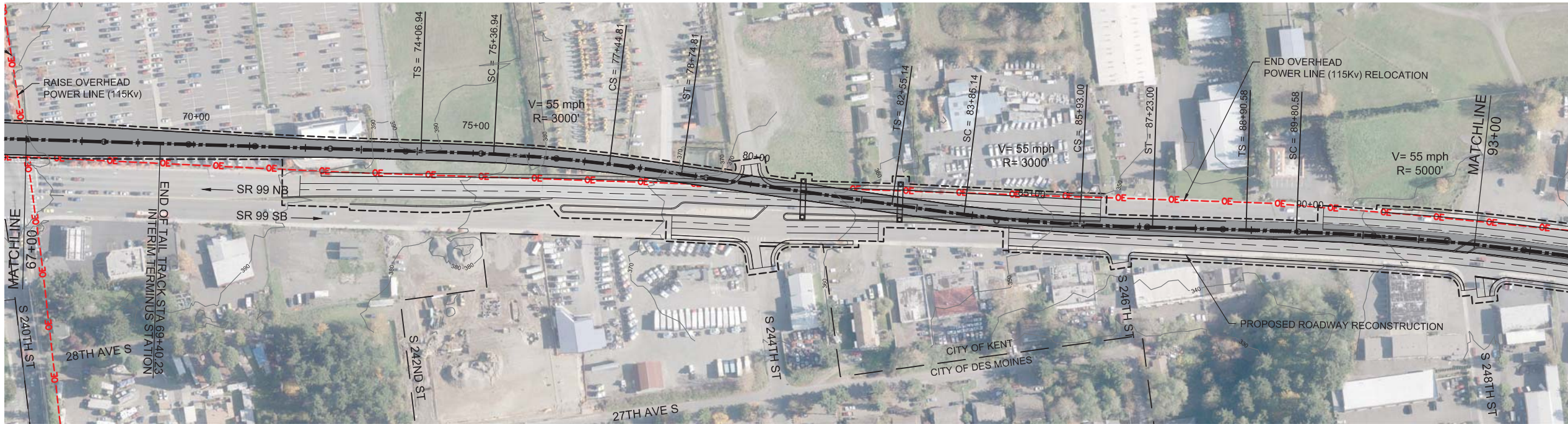
FINAL EIS - CONCEPTUAL DESIGN  
TRACK PLAN & PROFILE AND ROADWAY RECONSTRUCTION  
KENT/DES MOINES SR 99 EAST STATION OPTION  
STA 41+00 TO STA 67+00

AUGUST 2016

SR99-E2-PP05  
105



# SOUND TRANSIT FEDERAL WAY LINK EXTENSION



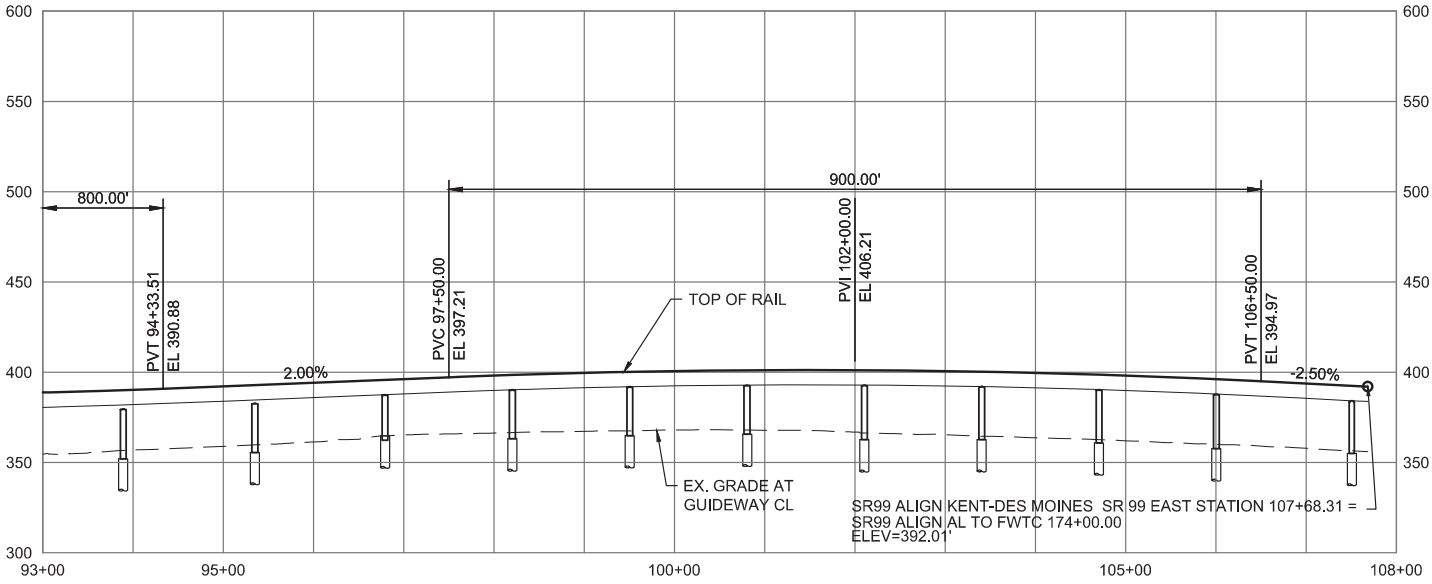
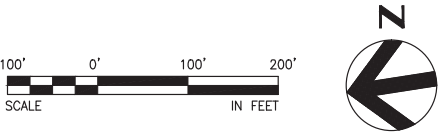
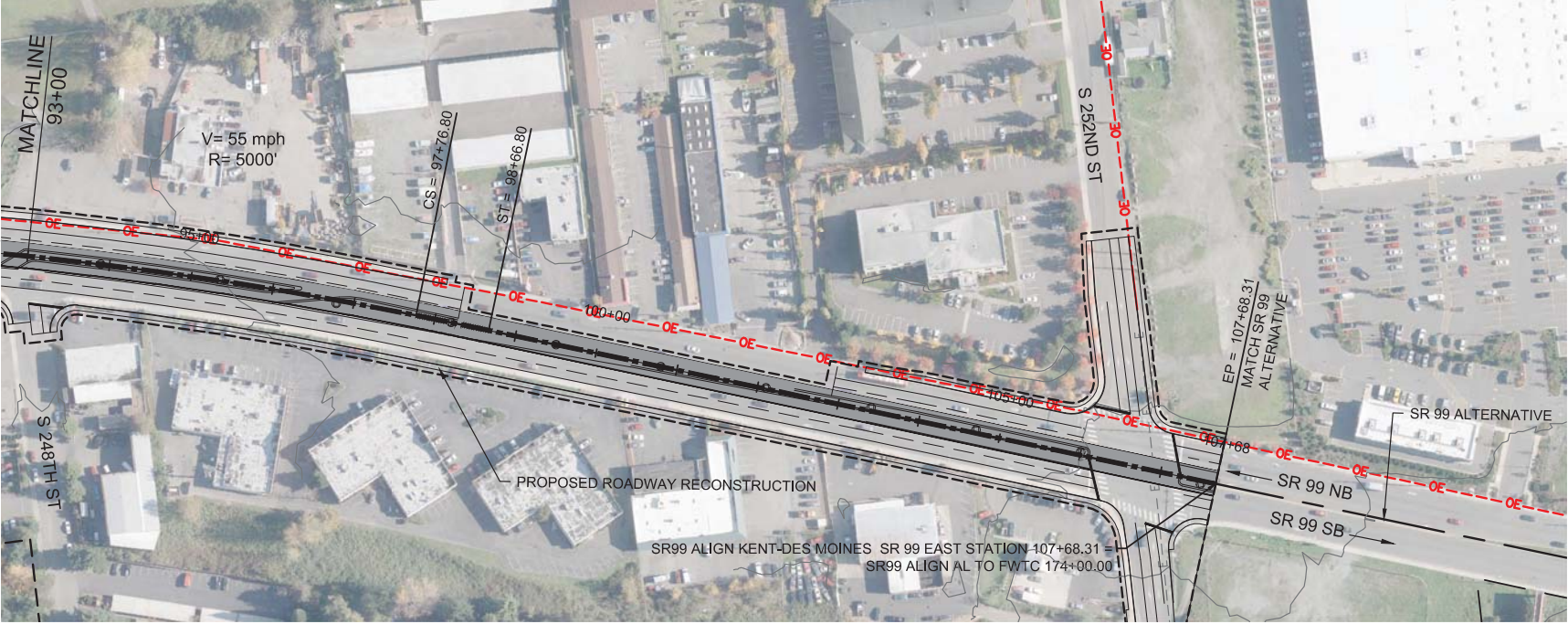
FINAL EIS - CONCEPTUAL DESIGN  
TRACK PLAN & PROFILE AND ROADWAY RECONSTRUCTION  
KENT/DES MOINES SR 99 EAST STATION OPTION  
STA 67+00 TO STA 93+00

AUGUST 2016

SR99-E3-PP06  
106



# SOUND TRANSIT FEDERAL WAY LINK EXTENSION



10/5/2016 8:55:43 AM  
C:\P\WORKING\SEA\0114119\KENT DES MOINES SR 99 EAST STATION.DWG



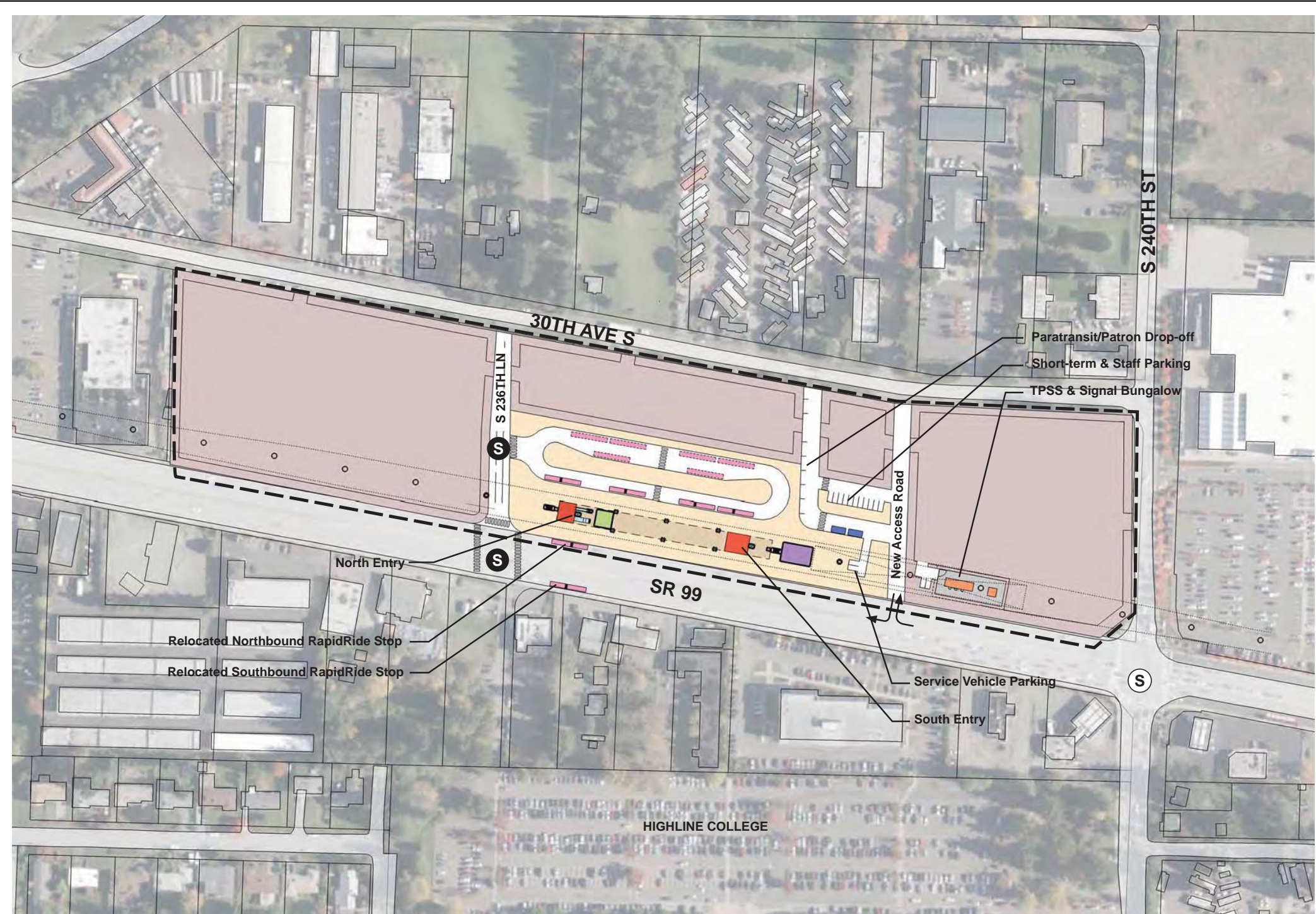
FINAL EIS - CONCEPTUAL DESIGN  
TRACK PLAN & PROFILE AND ROADWAY RECONSTRUCTION  
KENT/DES MOINES SR 99 EAST STATION OPTION  
STA 93+00 TO STA 107+68.31

AUGUST 2016

SR99-E4-PP07  
107



SOUND TRANSIT FEDERAL WAY LINK EXTENSION



- STATION PLAZA

VERTICAL CIRCULATION

TICKETING / ENTRY HALL

PLATFORM

ANCILLARY SPACES

TPSS
- BUS LAYOVER

BUS PICK-UP / DROP OFF

PARATRANSIT

BICYCLE STORAGE

CONSTRUCTION STAGING / PARKING

- STATION AREA FOOTPRINT

S

SIGNALIZED INTERSECTION (EXISTING)

S

SIGNALIZED INTERSECTION (PROPOSED)

ASSUMPTIONS:

Kent/Des Moines SR 99 East Station Option	
Alternative(s):	SR 99; I-5
Boardings	3,000
Boardings (with 216th Station)	2,500
Boardings (interim terminus)	4,500
Station Configuration	
Terminus / In-Line	Interim Terminus
Station Type	Center Platform - Elevated
Platform Width	34'
Tail track	900'
Crossover	Yes
TPSS	Yes
Program	
KC Metro Ancillary Spaces (SF)	200
ST Ancillary Spaces (SF)	1,800
Total Ancillary Spaces (SF)	2,000
Vertical Circulation	
# of entrances	2
# of escalators	2
# of staircases (patron)	2
# of elevators	2
# of emergency stairs	2
Bus/ Paratransit Facilities	
Bus bays (KCM)	2 bays, one 60' coach each
Bus bays (ST)	1 bay, two 60' coaches
Rapid Ride	On-street at SR 99
Bus layover (KCM)	2 bays, two 60' coaches each
Bus layover (ST)	1 bay, two 60' coaches
Paratransit spaces	1 permanent, 1 interim
Communications Facility	Tier 2
Parking & Amenities	
Bike storage	900 SF
Patron drop-off	6 spaces
Short-term patron parking	7 to 10 spaces
Staff parking	4 spaces
Service/emerg. vehicle park.	2 spaces, separate lot
Signal bungalow / TPSS park.	2 spaces, dedicated
Long-term patron parking	500 spaces (structure)
Temporary patron parking*	500 spaces (surface)
Total proposed patron parking*	1000 spaces

\*Only required for interim terminus condition



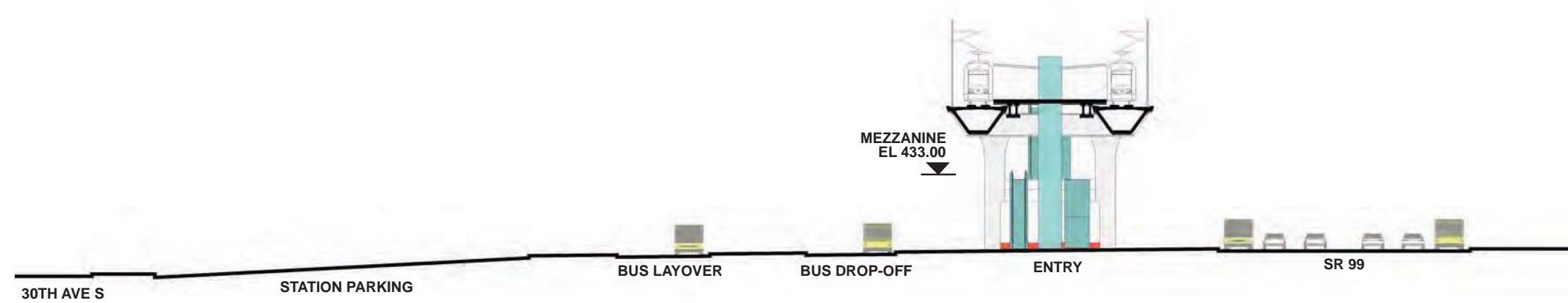
FINAL EIS - CONCEPTUAL DESIGN  
KENT/DES MOINES SR 99 EAST STATION OPTION  
STATION SITE PLAN

AUGUST 2016

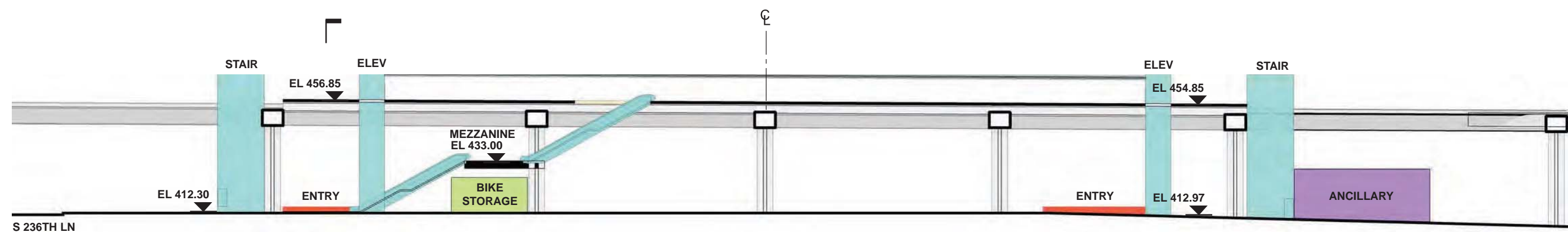
FWLE\_S99\_AP006  
108



SOUND TRANSIT FEDERAL WAY LINK EXTENSION



SECTION LOOKING SOUTH



SECTION LOOKING EAST

- |                        |                                |
|------------------------|--------------------------------|
| STATION PLAZA          | BUS LAYOVER                    |
| VERTICAL CIRCULATION   | BUS PICK-UP / DROP OFF         |
| TICKETING / ENTRY HALL | PARATRANSIT                    |
| PLATFORM               | BICYCLE STORAGE                |
| ANCILLARY SPACES       | CONSTRUCTION STAGING / PARKING |
| TPSS                   |                                |



FINAL EIS - CONCEPTUAL DESIGN  
KENT/DES MOINES SR 99 EAST STATION OPTION  
SECTIONS

AUGUST 2016

FWLE\_S99\_AX006  
109