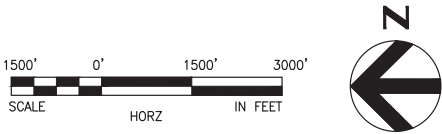


SOUND TRANSIT FEDERAL WAY LINK EXTENSION



SR99 SHEET LAYOUT MATRIX																
	1	2	3	4	5	6	7	8	9	10	11	12	13	14	15	16
A - SR 99 ALTERNATIVE	X	X	X	X	X	X	X	X	X	X	X	X	X	X	X	X
B - S 216TH WEST STATION OPTION (POTENTIAL ADDITIONAL STATION)	X	X	X													
C - S 216TH EAST STATION OPTION (POTENTIAL ADDITIONAL STATION)		X	X													
D - KENT/DES MOINES SR 99 MEDIAN STATION OPTION				X	X	X										
E - KENT/DES MOINES SR 99 EAST STATION OPTION				X	X	X	X									
F - KENT/DES MOINES HC CAMPUS STATION OPTION			X	X	X	X	X									
F - KDM HC CAMPUS OPTION FROM S 216TH WEST STATION OPTION						X	X	X	X	X						
G - S 260TH WEST STATION OPTION (POTENTIAL ADDITIONAL STATION)					X	X	X	X	X							
H - S 260TH EAST STATION OPTION (POTENTIAL ADDITIONAL STATION)							X	X	X	X						
J - S 272ND REDONDO TRENCH STATION OPTION								X	X	X	X	X	X	X		
K - FEDERAL WAY SR 99 STATION OPTION															X	X



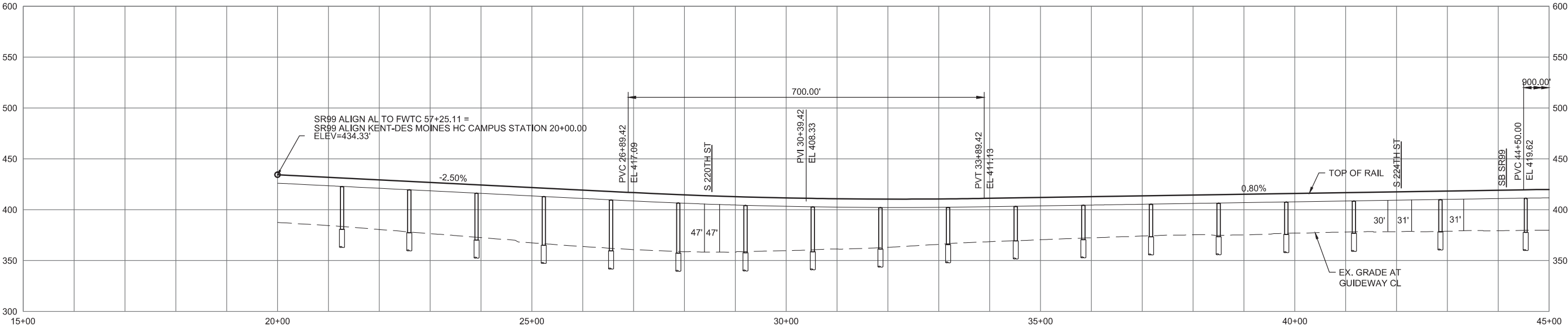
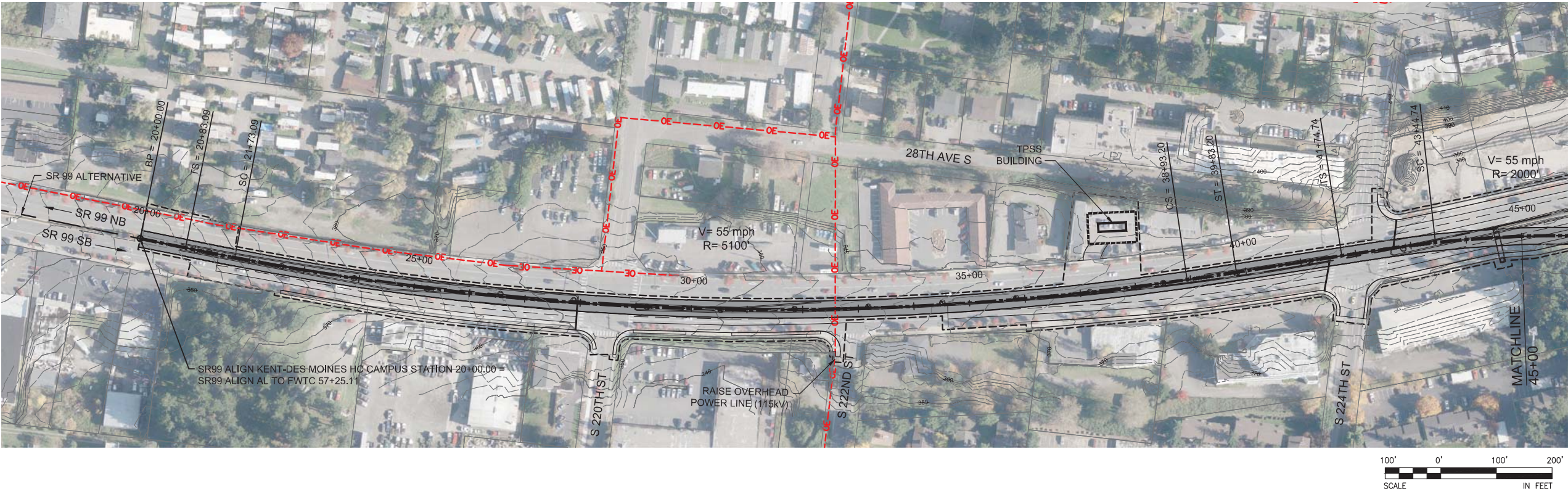
FINAL EIS - CONCEPTUAL DESIGN
KENT / DES MOINES HC CAMPUS STATION OPTION
SHEET INDEX KEYMAP

AUGUST 2016

SR99-F00-GX02
110

9/26/2016 3:06:41 PM
C:\P\WORKING\SEA\011417\SR99\F00-GX02.DWG

SOUND TRANSIT FEDERAL WAY LINK EXTENSION



9/26/2016 4:25:14 PM
C:\P\WORKING\SEA\0114119\F - KENT DES MOINES HC CAMPUS STATION.DWG

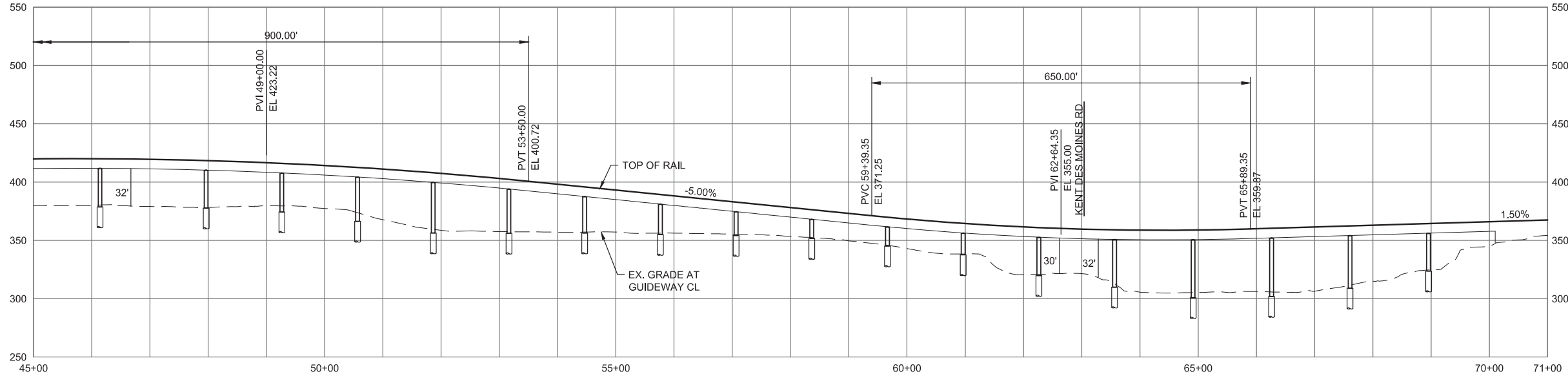


FINAL EIS - CONCEPTUAL DESIGN
TRACK PLAN & PROFILE AND ROADWAY RECONSTRUCTION
KENT/DES MOINES HC CAMPUS STATION OPTION
STA 20+00 TO STA 45+00

AUGUST 2016

SR99-F1-PP03
111

SOUND TRANSIT FEDERAL WAY LINK EXTENSION



9/26/2016 4:29:38 PM
C:\P\WORKING\SEA\0114119\F_KENT DES MOINES HC CAMPUS STATION.DWG

FOXC

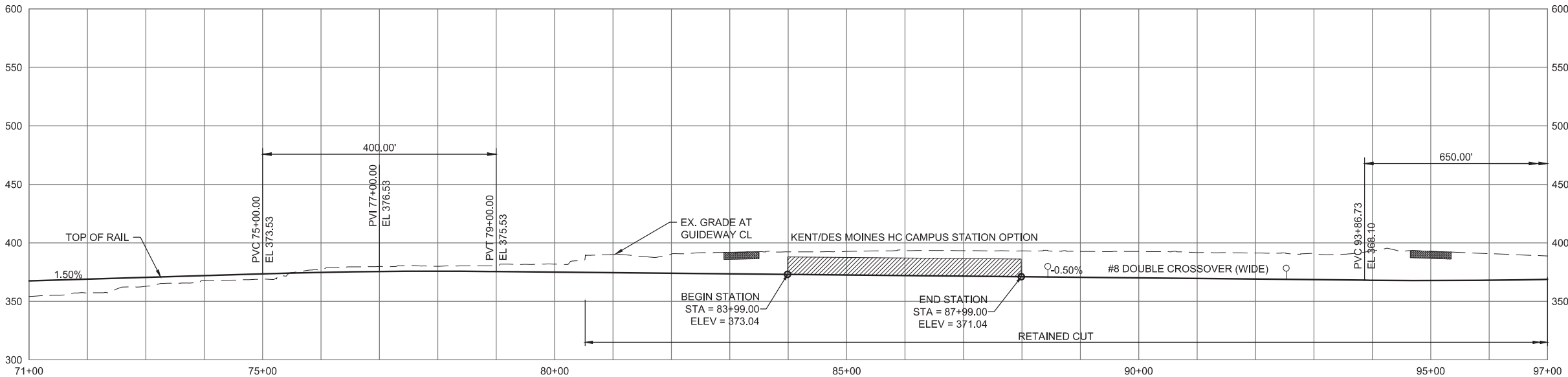
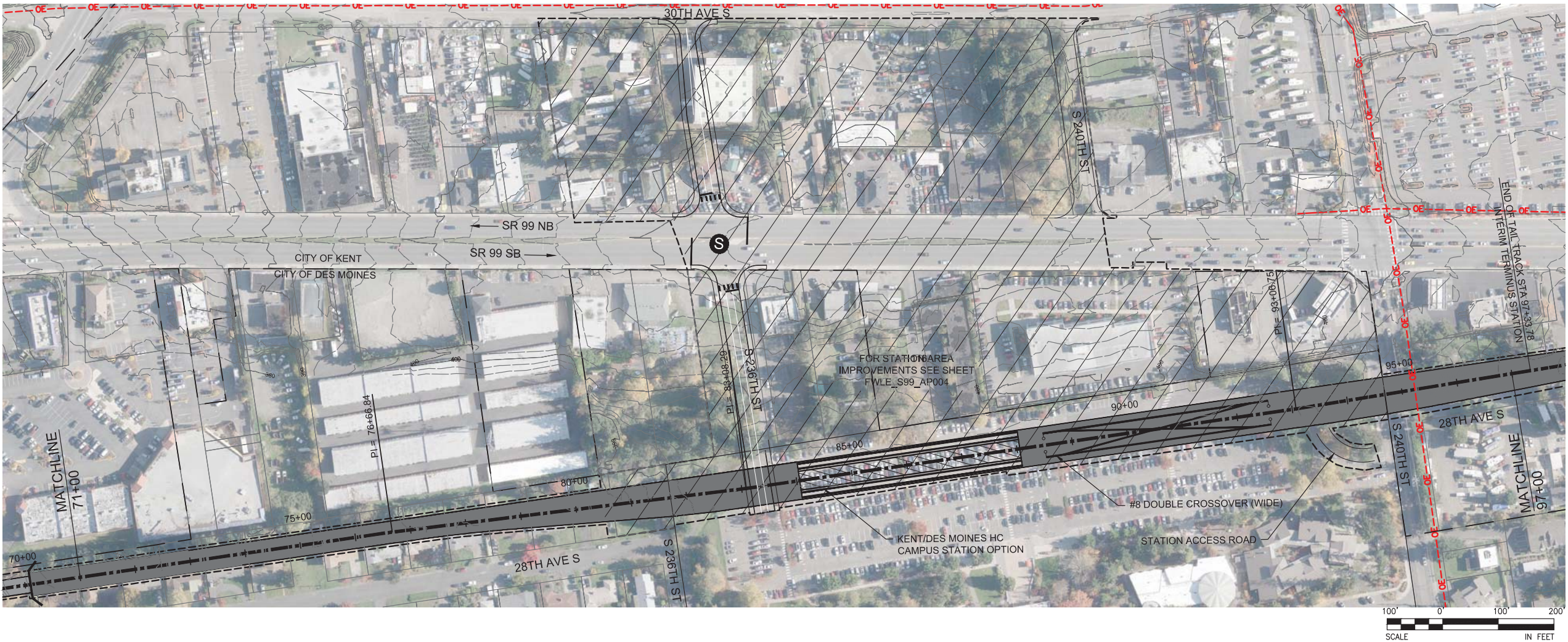


FINAL EIS - CONCEPTUAL DESIGN
TRACK PLAN & PROFILE AND ROADWAY RECONSTRUCTION
KENT/DES MOINES HC CAMPUS STATION OPTION
STA 45+00 TO STA 71+00

AUGUST 2016

SR99-F2-PP04
112

SOUND TRANSIT FEDERAL WAY LINK EXTENSION

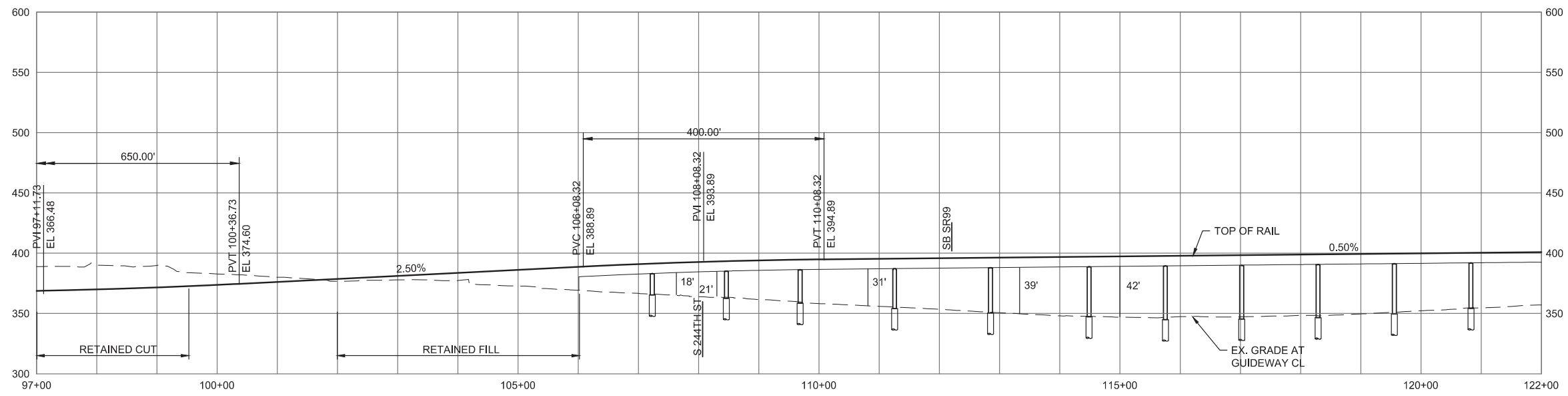
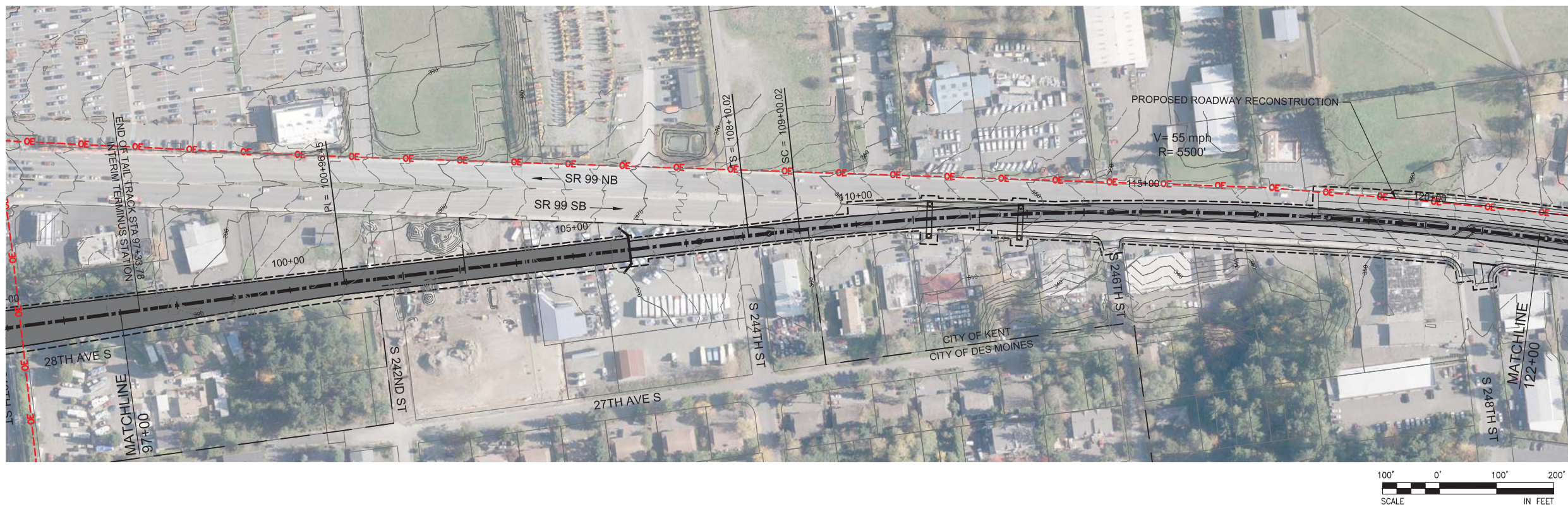


FINAL EIS - CONCEPTUAL DESIGN
TRACK PLAN & PROFILE AND ROADWAY RECONSTRUCTION
KENT/DES MOINES HC CAMPUS STATION OPTION
STA 71+00 TO STA 97+00

AUGUST 2016

SR99-F3-PP05
113

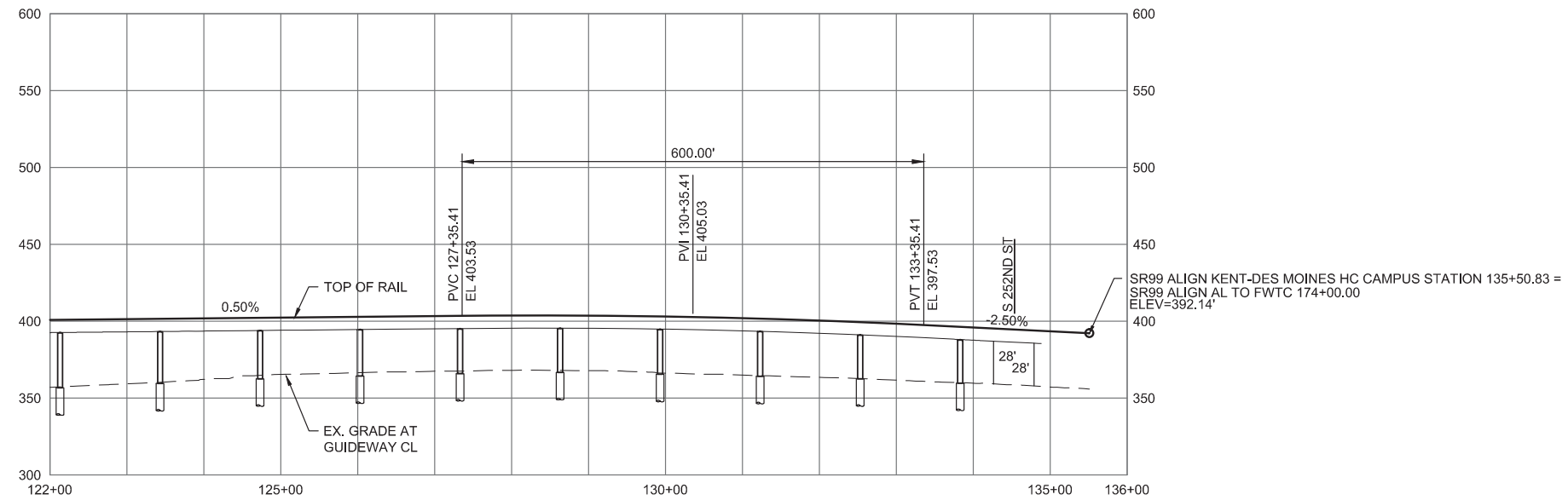
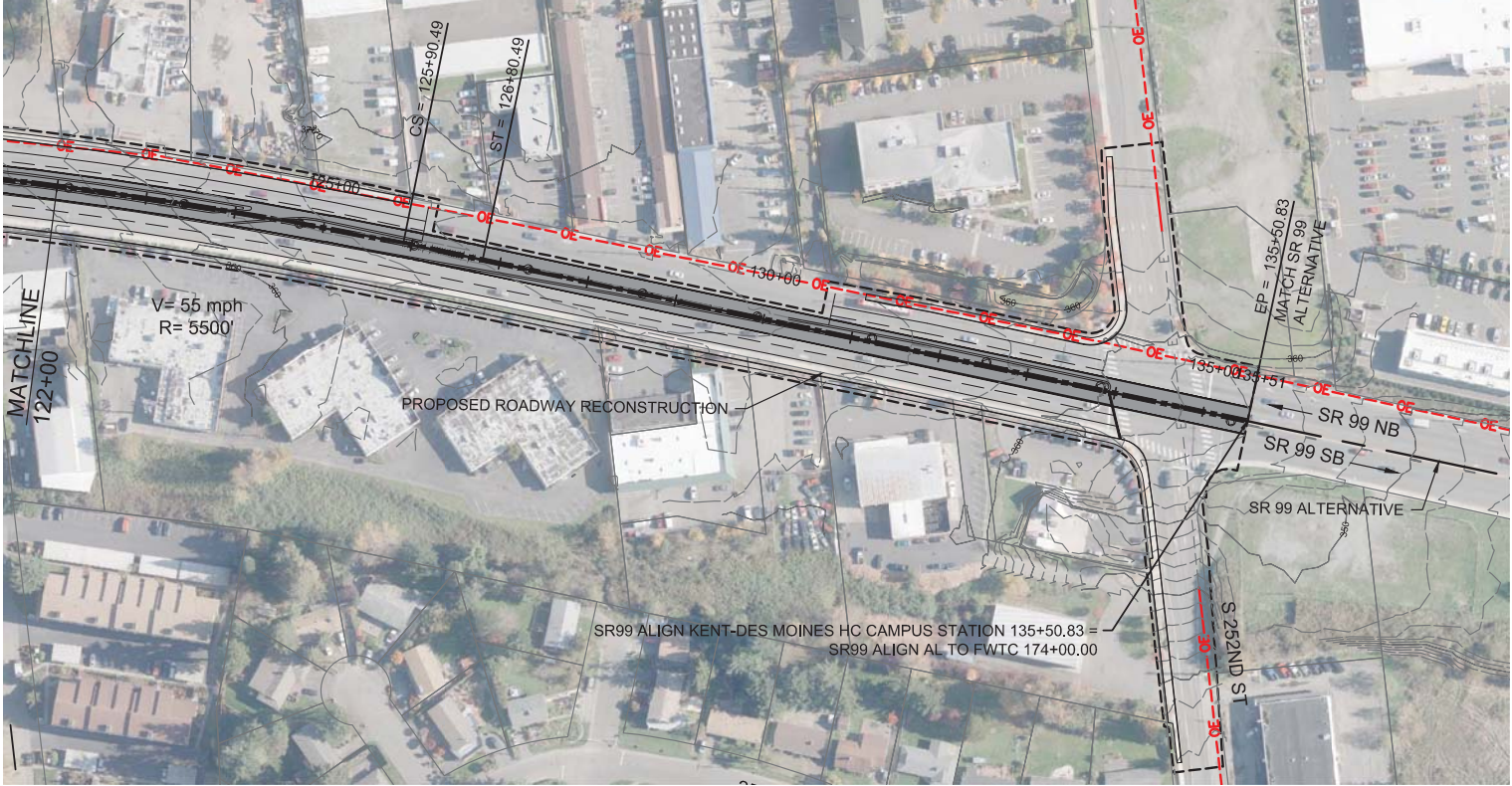
SOUND TRANSIT FEDERAL WAY LINK EXTENSION



FINAL EIS - CONCEPTUAL DESIGN
TRACK PLAN & PROFILE AND ROADWAY RECONSTRUCTION
KENT/DES MOINES HC CAMPUS STATION OPTION
STA 97+00 TO STA 122+00

AUGUST 2016
SR99-F4-PP06
114

SOUND TRANSIT FEDERAL WAY LINK EXTENSION



10/3/2016 1:56:15 PM
C:\P\WORKING\SEA\114119\F_KENT DES MOINES HC CAMPUS STATION.DWG

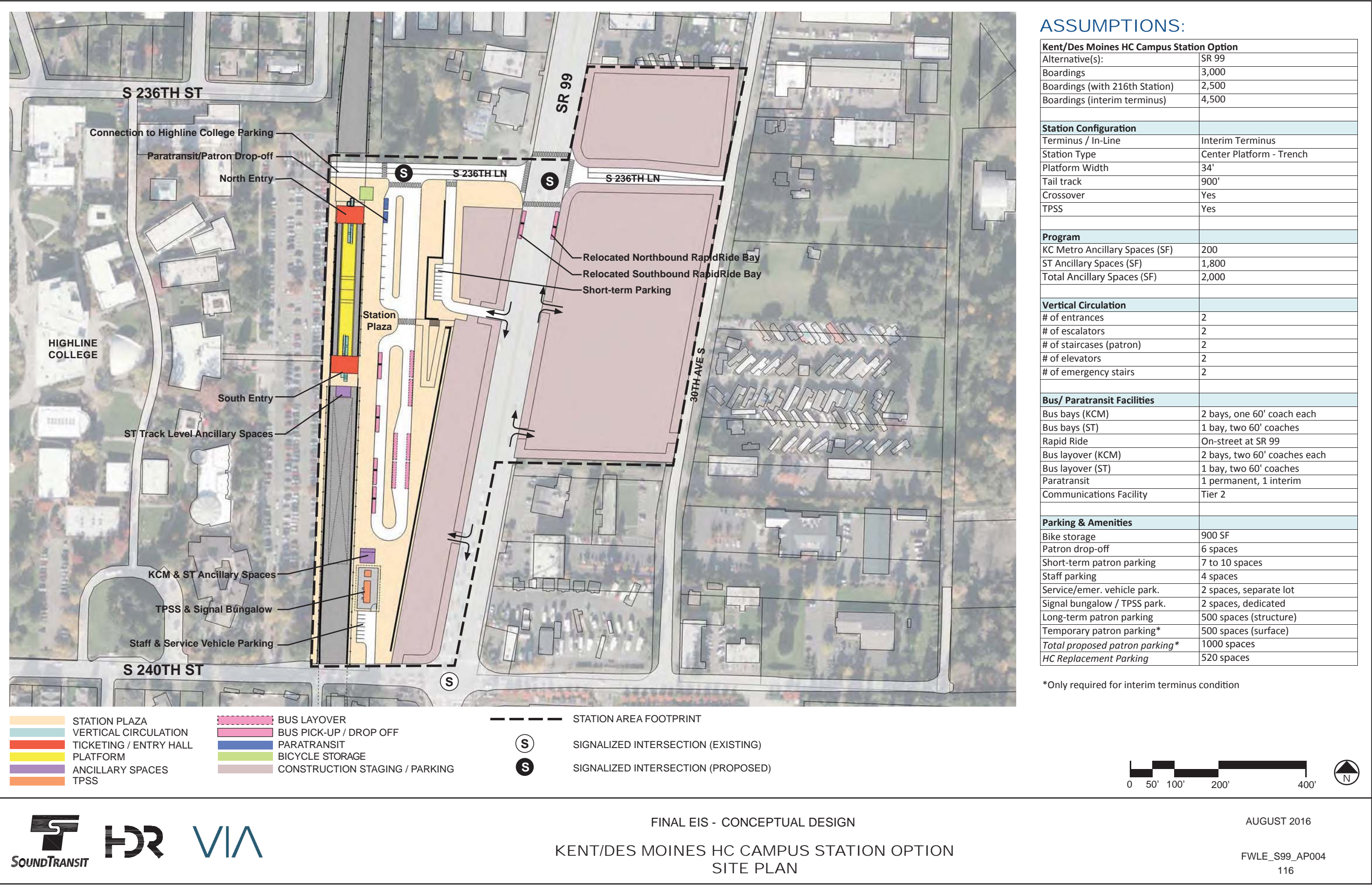


FINAL EIS - CONCEPTUAL DESIGN
TRACK PLAN & PROFILE AND ROADWAY RECONSTRUCTION
KENT/DES MOINES HC CAMPUS STATION OPTION
STA 122+00 TO STA 134+88.36

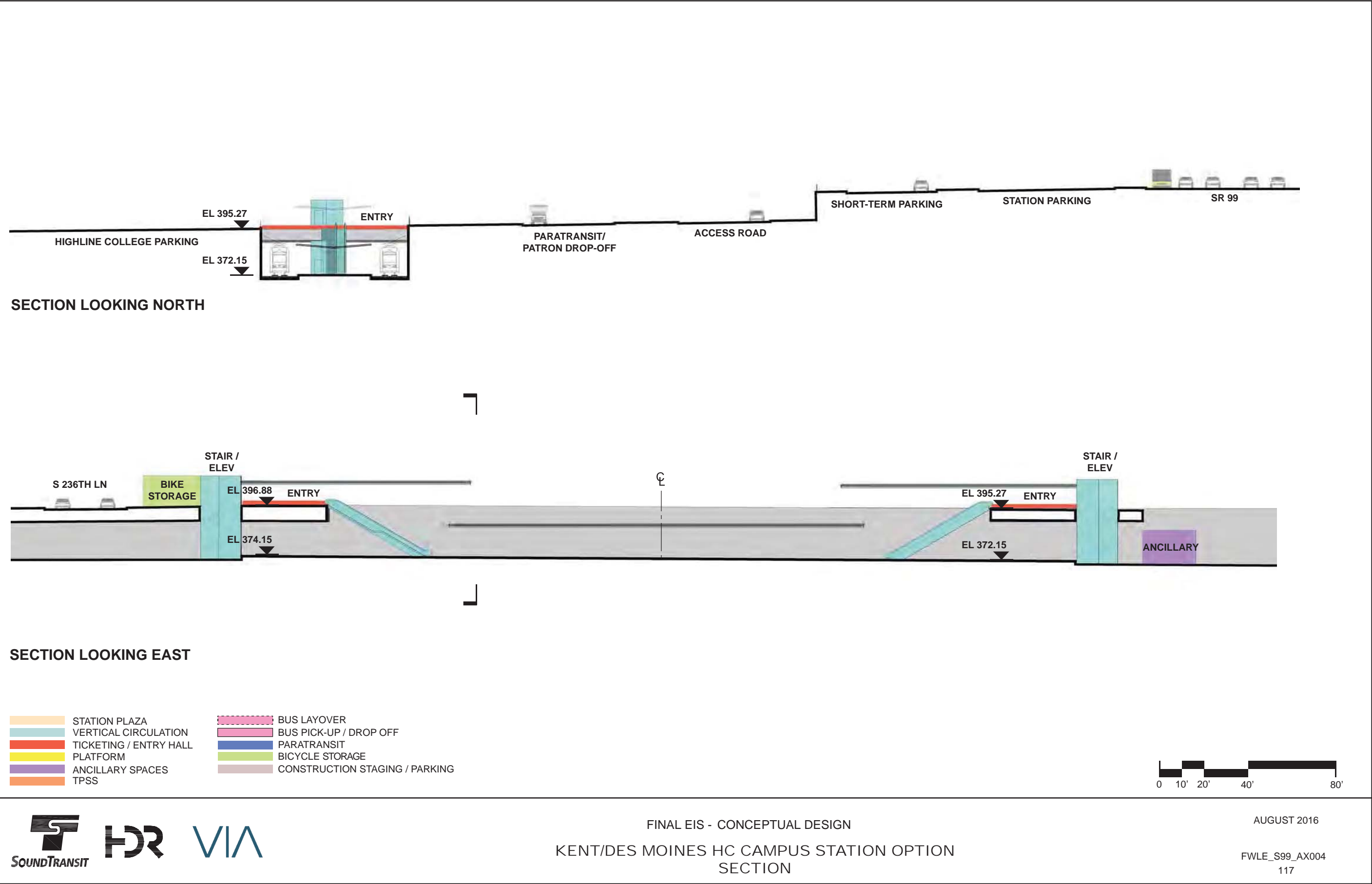
AUGUST 2016

SR99-F5-PP07
115

SOUND TRANSIT FEDERAL WAY LINK EXTENSION



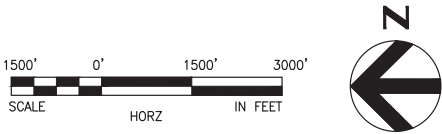
SOUND TRANSIT FEDERAL WAY LINK EXTENSION



SOUND TRANSIT FEDERAL WAY LINK EXTENSION



SR99 SHEET LAYOUT MATRIX																
	1	2	3	4	5	6	7	8	9	10	11	12	13	14	15	16
A - SR 99 ALTERNATIVE	X	X	X	X	X	X	X	X	X	X	X	X	X	X	X	X
B - S 216TH WEST STATION OPTION (POTENTIAL ADDITIONAL STATION)	X	X	X													
C - S 216TH EAST STATION OPTION (POTENTIAL ADDITIONAL STATION)		X	X													
D - KENT/DES MOINES SR 99 MEDIAN STATION OPTION				X	X	X										
E - KENT/DES MOINES SR 99 EAST STATION OPTION				X	X	X	X									
F - KENT/DES MOINES HC CAMPUS STATION OPTION			X	X	X	X	X									
F - KDM HC CAMPUS OPTION FROM S 216TH WEST STATION OPTION						X	X	X	X	X						
G - S 260TH WEST STATION OPTION (POTENTIAL ADDITIONAL STATION)					X	X	X	X	X							
H - S 260TH EAST STATION OPTION (POTENTIAL ADDITIONAL STATION)							X	X	X	X						
J - S 272ND REDONDO TRENCH STATION OPTION								X	X	X	X	X	X	X		
K - FEDERAL WAY SR 99 STATION OPTION															X	X

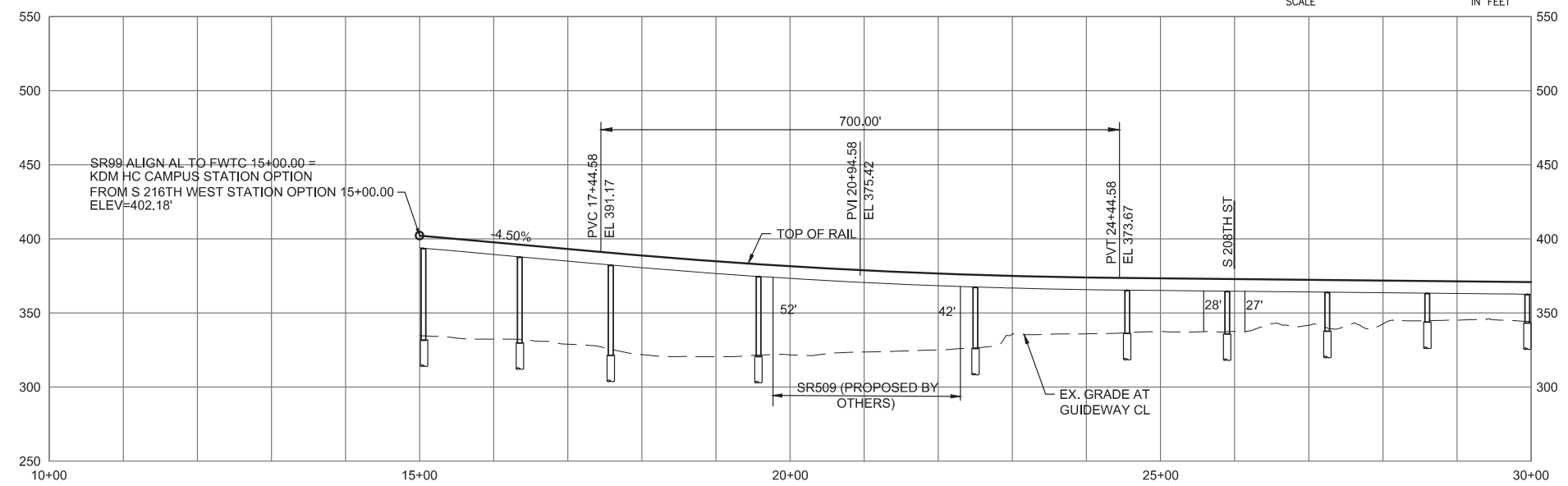
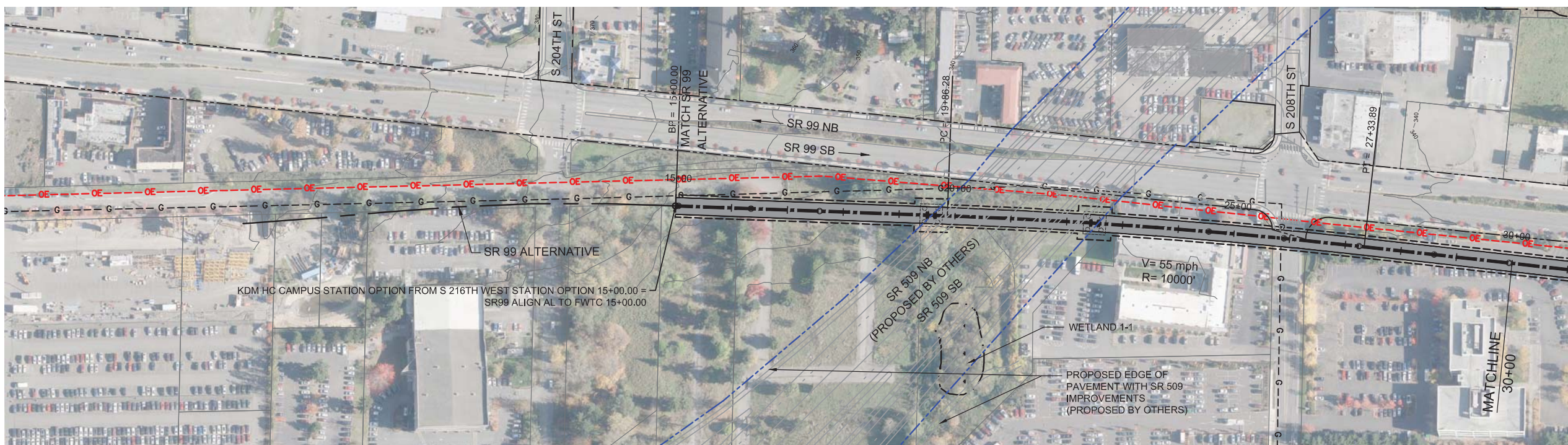


FINAL EIS - CONCEPTUAL DESIGN
KENT / DES MOINES HC CAMPUS STATION OPTION FROM S 216TH WEST STATION OPTION
SHEET INDEX KEYMAP

AUGUST 2016

SR99-F00-GX02
118

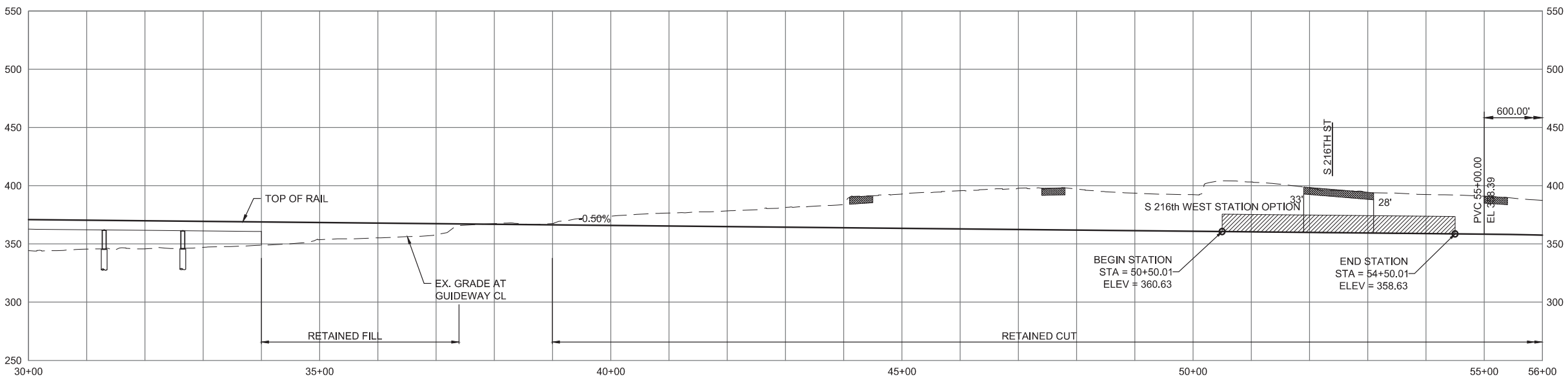
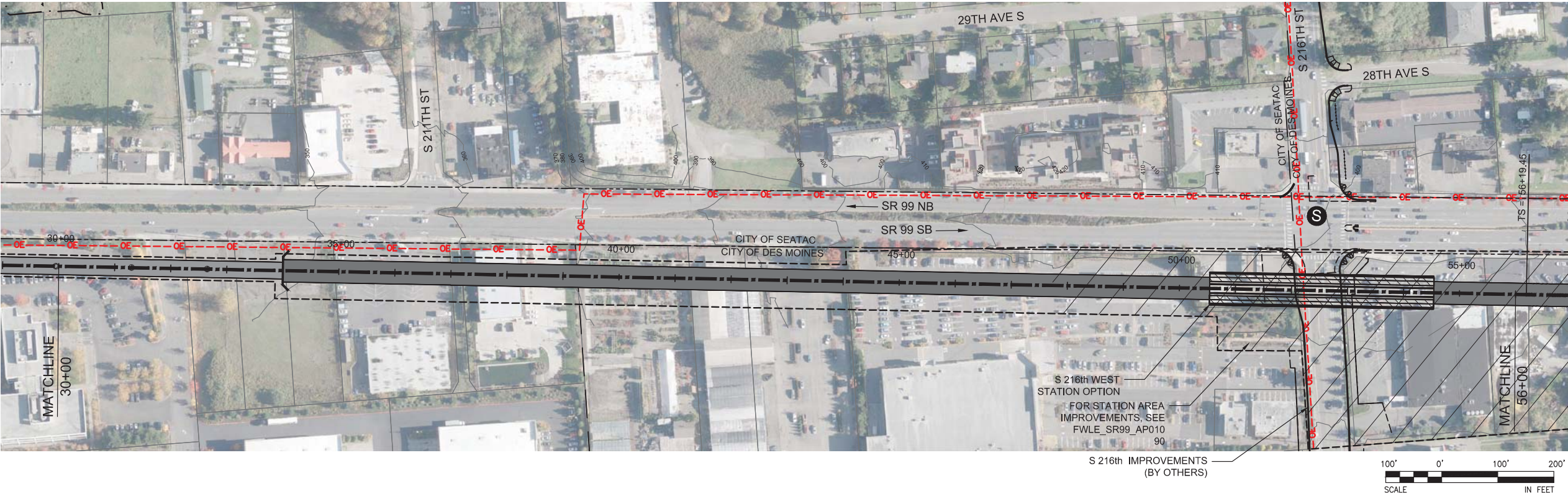
SOUND TRANSIT FEDERAL WAY LINK EXTENSION



FINAL EIS - CONCEPTUAL DESIGN
TRACK PLAN & PROFILE AND ROADWAY RECONSTRUCTION
KDM HC CAMPUS STATION OPTION FROM S 216TH WEST STATION OPTION
STA 15+00 TO STA 30+00

AUGUST 2016
SR99-F6-PP01
119

SOUND TRANSIT FEDERAL WAY LINK EXTENSION



10/5/2016 9:00:15 AM
C:\P\WORKING\SEA\0114119\FWLE_SR99_216TH_HC_OPTION.DWG

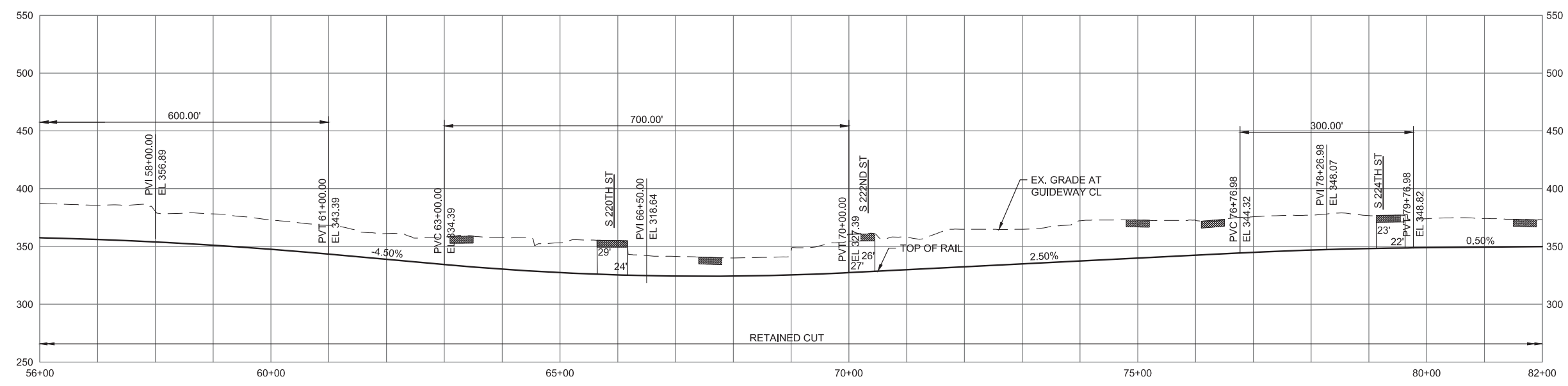


FINAL EIS - CONCEPTUAL DESIGN
TRACK PLAN & PROFILE AND ROADWAY RECONSTRUCTION
KDM HC CAMPUS STATION OPTION FROM S 216TH WEST STATION OPTION
STA 30+00 TO STA 56+00

AUGUST 2016

SR99-F7-PP02
120

SOUND TRANSIT FEDERAL WAY LINK EXTENSION



FINAL EIS - CONCEPTUAL DESIGN

TRACK PLAN & PROFILE AND ROADWAY RECONSTRUCTION

KDM HC CAMPUS STATION OPTION FROM S 216TH WEST STATION OPTION

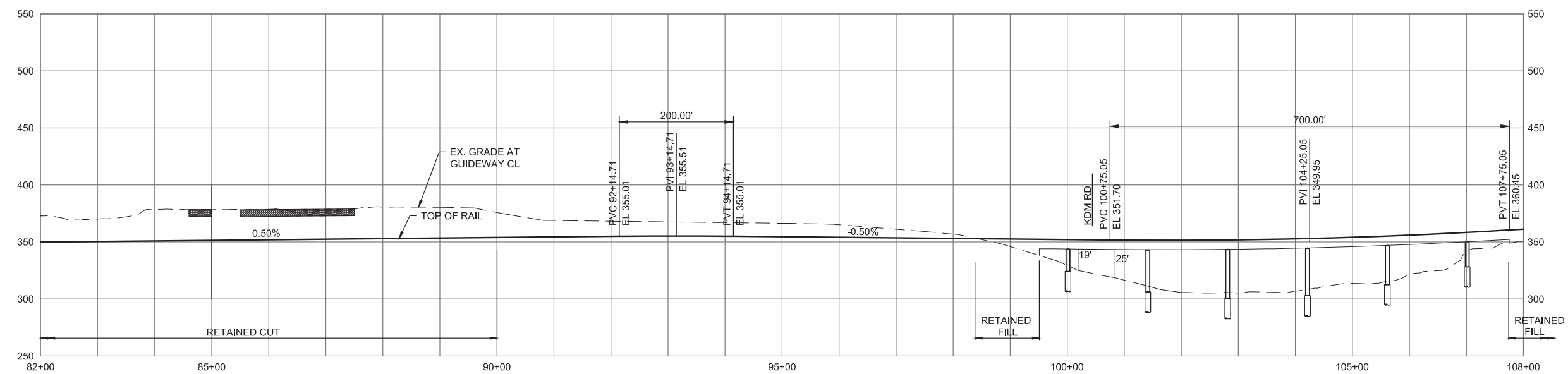
STA 56+00 TO STA 82+00

AUGUST 2016

SR99-F8-PP03

121

SOUND TRANSIT FEDERAL WAY LINK EXTENSION



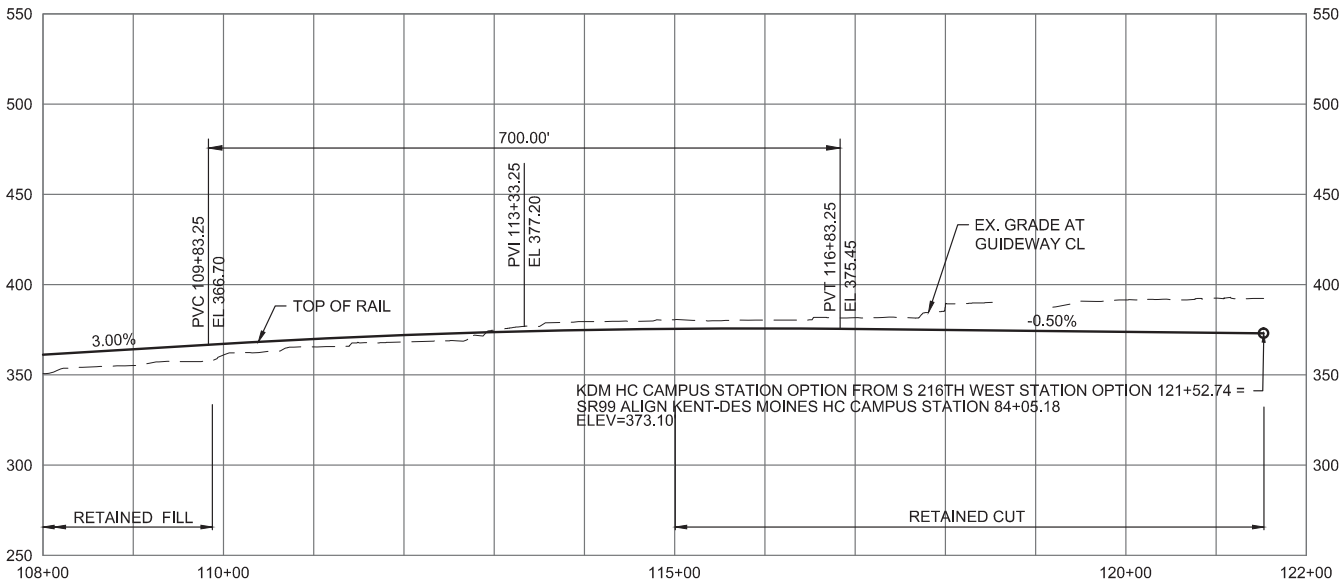
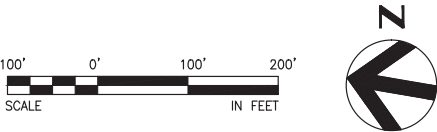
10/3/2016 2:04:31 PM
C:\P\WORKING\SEA\114119\FWLE_SHE9_2101TH_HC_OPTION.DWG



FINAL EIS - CONCEPTUAL DESIGN
TRACK PLAN & PROFILE AND ROADWAY RECONSTRUCTION
KDM HC CAMPUS STATION OPTION FROM S 216TH WEST STATION OPTION
STA 82+00 TO STA 108+00

AUGUST 2016
SR99-F9-PP04
122

SOUND TRANSIT FEDERAL WAY LINK EXTENSION



10/3/2016 2:04:47 PM
C:\P\WORKING\SEA\0114119\FWLE_SRP9_210TH_HC_OPTION.DWG



FINAL EIS - CONCEPTUAL DESIGN
TRACK PLAN & PROFILE AND ROADWAY RECONSTRUCTION
KDM HC CAMPUS STATION OPTION FROM S 216TH WEST STATION OPTION
STA 108+00 TO STA 121+52.74

AUGUST 2016

SR99-F10-PP05
123