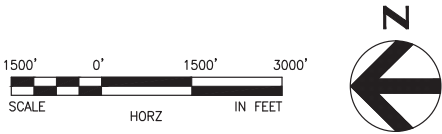


SOUND TRANSIT FEDERAL WAY LINK EXTENSION



SR99 SHEET LAYOUT MATRIX																
	1	2	3	4	5	6	7	8	9	10	11	12	13	14	15	16
A - SR 99 ALTERNATIVE	X	X	X	X	X	X	X	X	X	X	X	X	X	X	X	X
B - S 216TH WEST STATION OPTION (POTENTIAL ADDITIONAL STATION)	X	X	X													
C - S 216TH EAST STATION OPTION (POTENTIAL ADDITIONAL STATION)		X	X													
D - KENT/DES MOINES SR 99 MEDIAN STATION OPTION				X	X	X										
E - KENT/DES MOINES SR 99 EAST STATION OPTION				X	X	X	X									
F - KENT/DES MOINES HC CAMPUS STATION OPTION			X	X	X	X	X									
F - KDM HC CAMPUS OPTION FROM S 216TH WEST STATION OPTION						X	X	X	X	X						
G - S 260TH WEST STATION OPTION (POTENTIAL ADDITIONAL STATION)					X	X	X	X	X							
H - S 260TH EAST STATION OPTION (POTENTIAL ADDITIONAL STATION)							X	X	X	X						
J - S 272ND REDONDO TRENCH STATION OPTION							X	X	X	X	X	X	X			
K - FEDERAL WAY SR 99 STATION OPTION															X	X

I - NOT USED



10/3/2016 2:11:39 PM
C:\P\WORKING\SEA\011417\SR99-G00-GX02.DWG

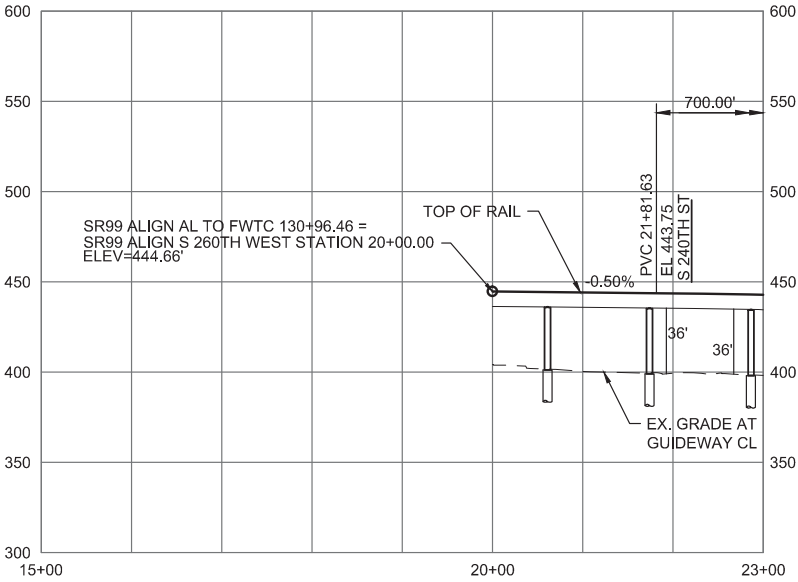


FINAL EIS - CONCEPTUAL DESIGN
S 260TH WEST STATION OPTION (POTENTIAL ADDITIONAL STATION)
SHEET INDEX KEYMAP

AUGUST 2016

SR99-G00-GX02
124

SOUND TRANSIT FEDERAL WAY LINK EXTENSION



9/27/2016 9:15:43 AM
C:\P\WORKING\SEAD11141186G_S260TH_WEST_STATION.DWG

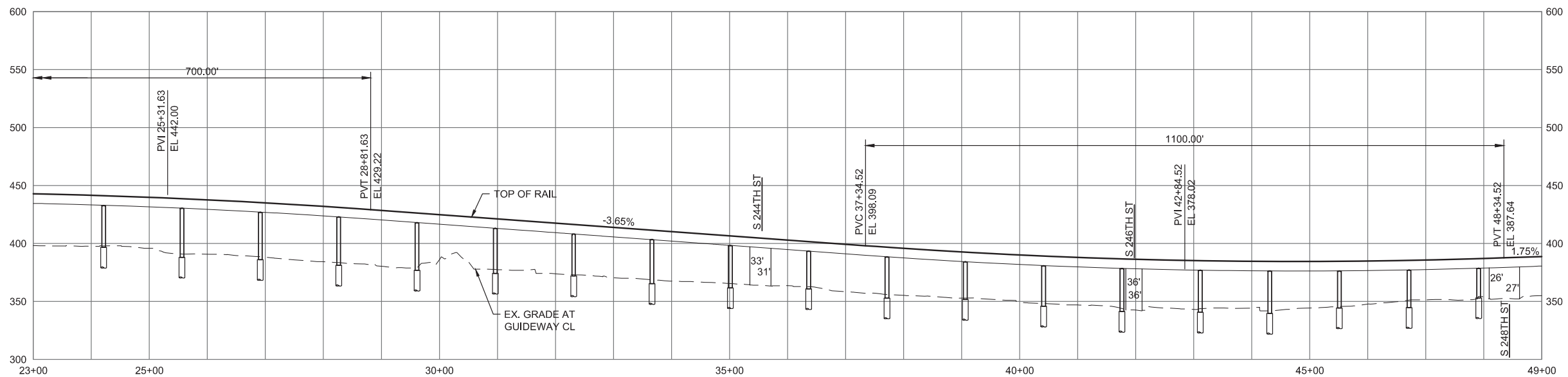
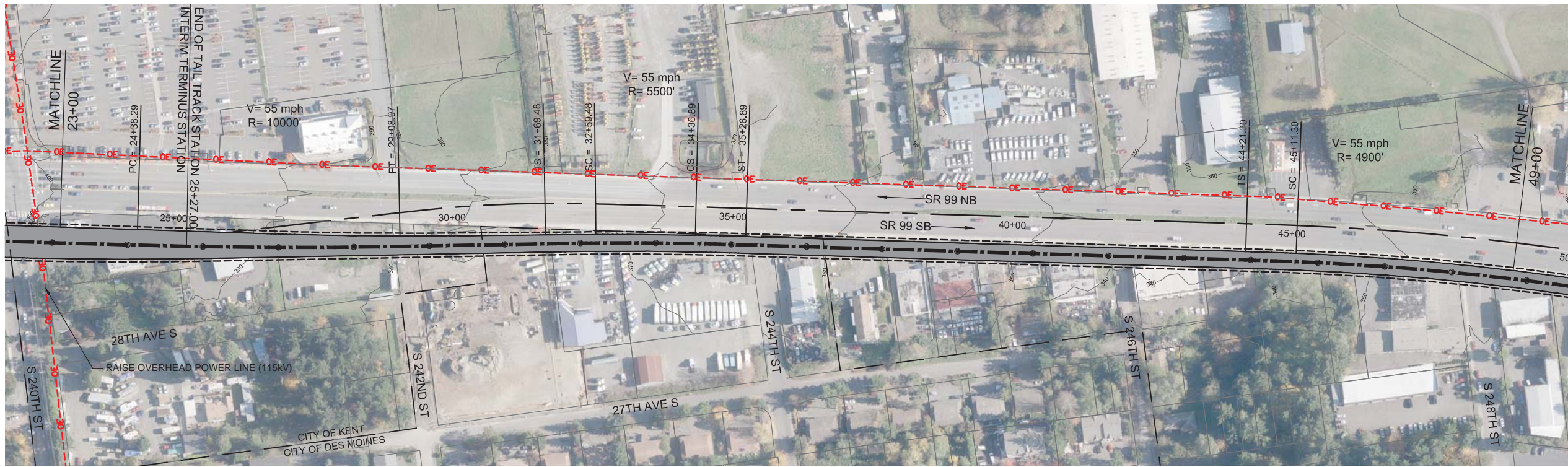


FINAL EIS - CONCEPTUAL DESIGN
TRACK PLAN AND PROFILE & ROADWAY RECONSTRUCTION
S 260TH WEST STATION OPTION (POTENTIAL ADDITIONAL STATION)
STA 20+00 TO STA 23+00

AUGUST 2016

SR99-G1-PP05
125

SOUND TRANSIT FEDERAL WAY LINK EXTENSION



9/27/2016 9:16:06 AM
C:\P\WORKING\SEAD11141186G_S260TH_WEST_STATION.DWG

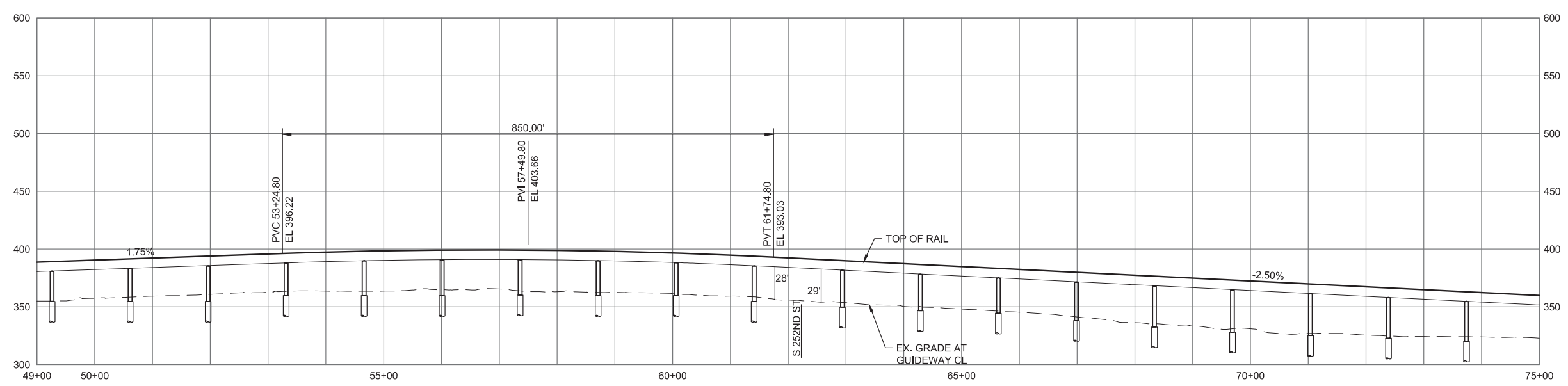
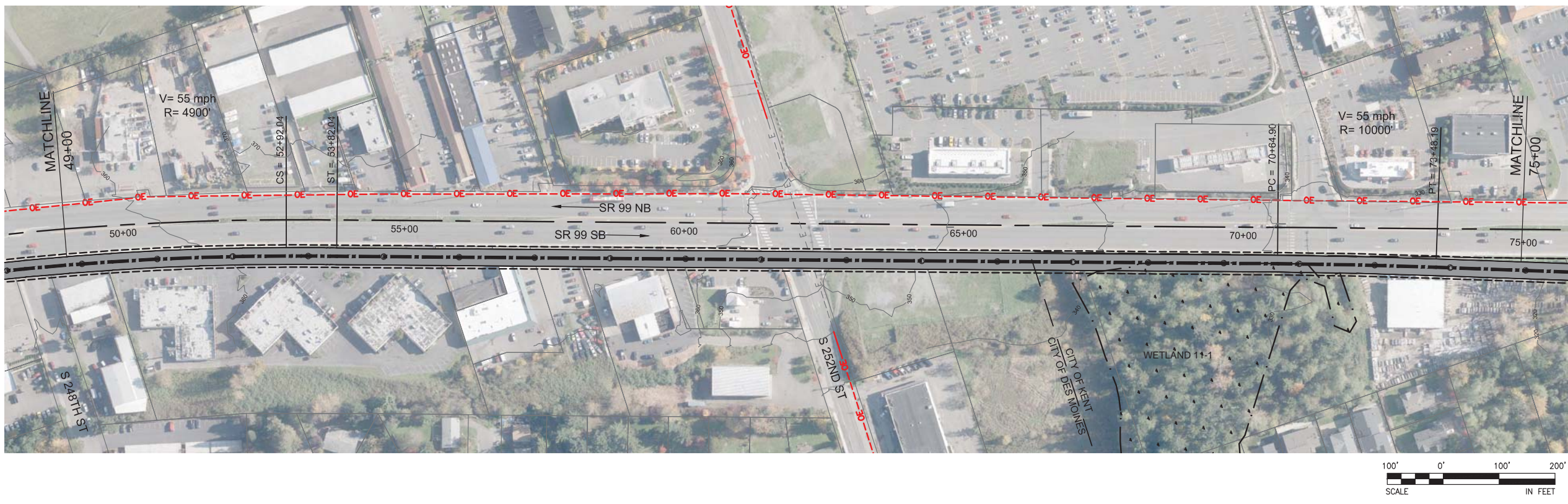


FINAL EIS - CONCEPTUAL DESIGN
TRACK PLAN AND PROFILE & ROADWAY RECONSTRUCTION
S 260TH WEST STATION OPTION (POTENTIAL ADDITIONAL STATION)
STA 23+00 TO STA 49+00

AUGUST 2016

SR99-G2-PP06
126

SOUND TRANSIT FEDERAL WAY LINK EXTENSION



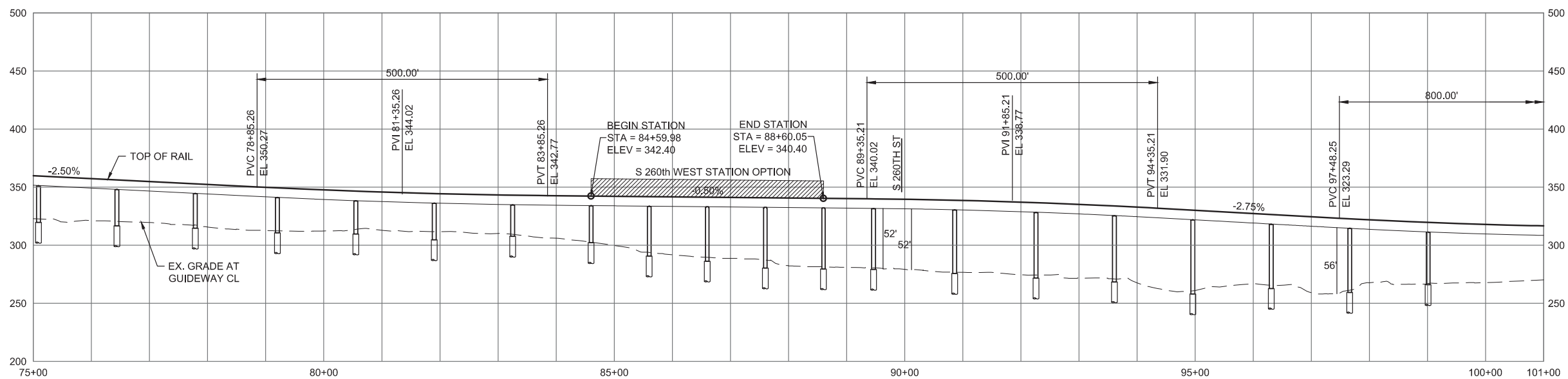
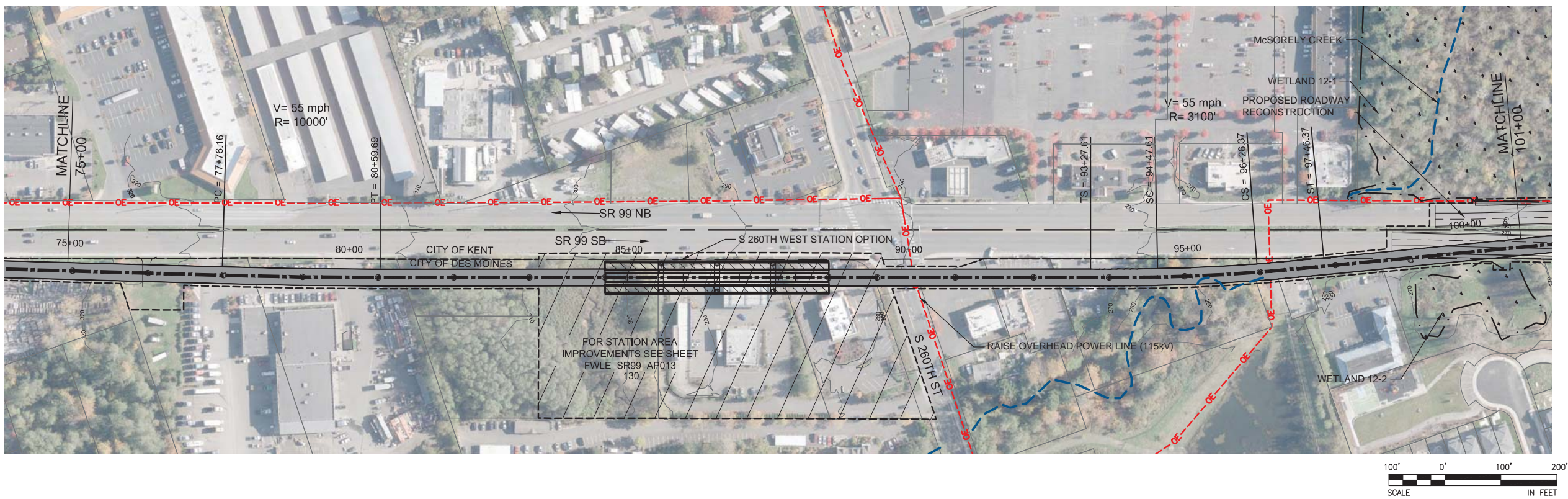
9/27/2016 9:16:20 AM
C:\P\WORKING\SEAD11141186G_S260TH_WEST_STATION.DWG



FINAL EIS - CONCEPTUAL DESIGN
TRACK PLAN AND PROFILE & ROADWAY RECONSTRUCTION
S 260TH WEST STATION OPTION (POTENTIAL ADDITIONAL STATION)
STA 49+00 TO STA 75+00

AUGUST 2016
SR99-G3-PP07
127

SOUND TRANSIT FEDERAL WAY LINK EXTENSION



9/27/2016 9:16:39 AM
C:\P\WORKING\SEAD1141186G_S260TH_WEST_STATION.DWG

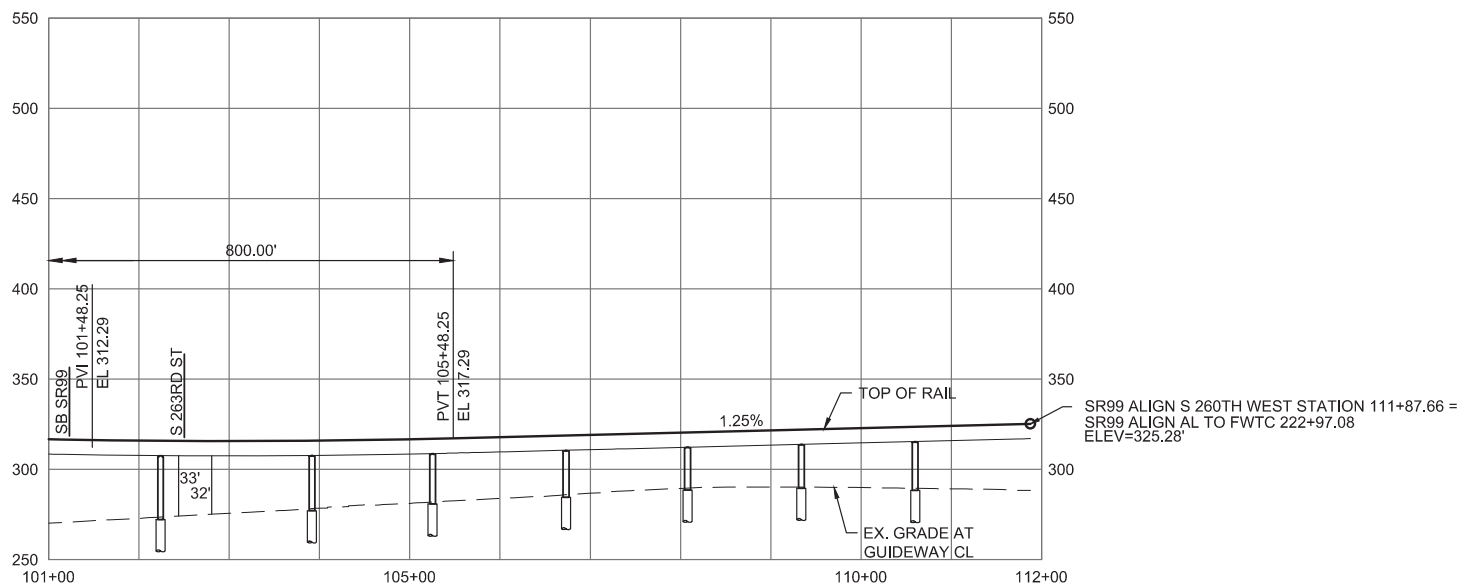
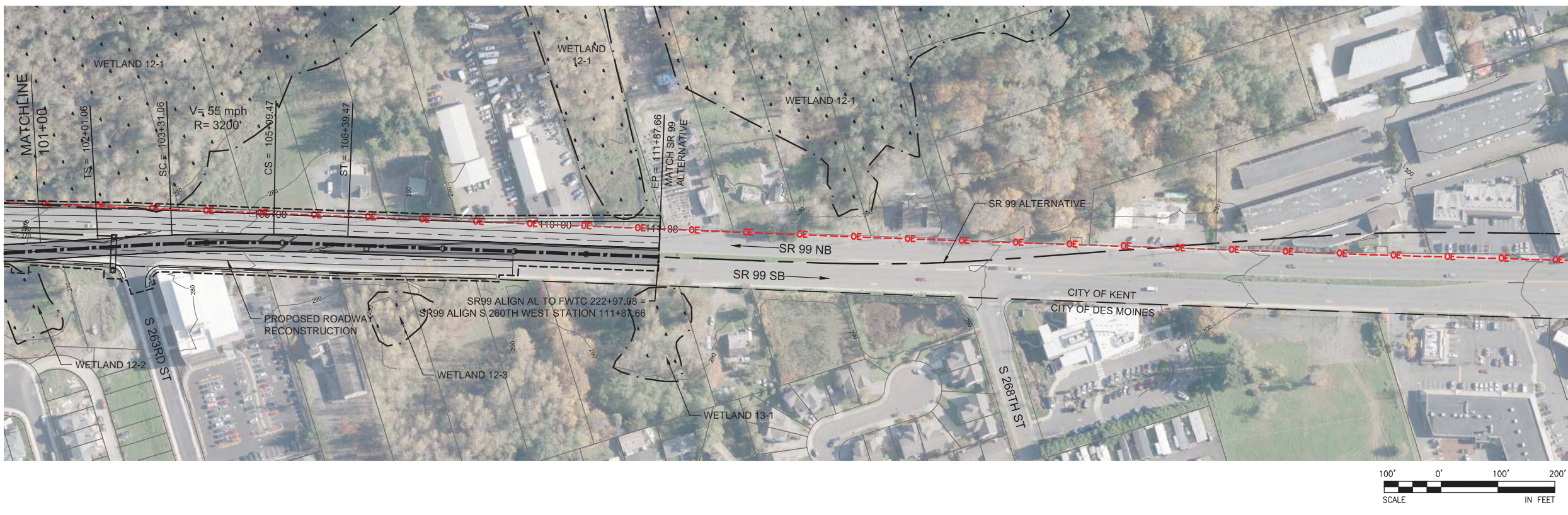


FINAL EIS - CONCEPTUAL DESIGN
TRACK PLAN AND PROFILE & ROADWAY RECONSTRUCTION
S 260TH WEST STATION OPTION (POTENTIAL ADDITIONAL STATION)
STA 75+00 TO STA 101+00

AUGUST 2016

SR99-G4-PP08
128

SOUND TRANSIT FEDERAL WAY LINK EXTENSION



9/27/2016 9:16:52 AM
C:\P\WORKING\SEAD11141186_S260TH_WEST_STATION.DWG

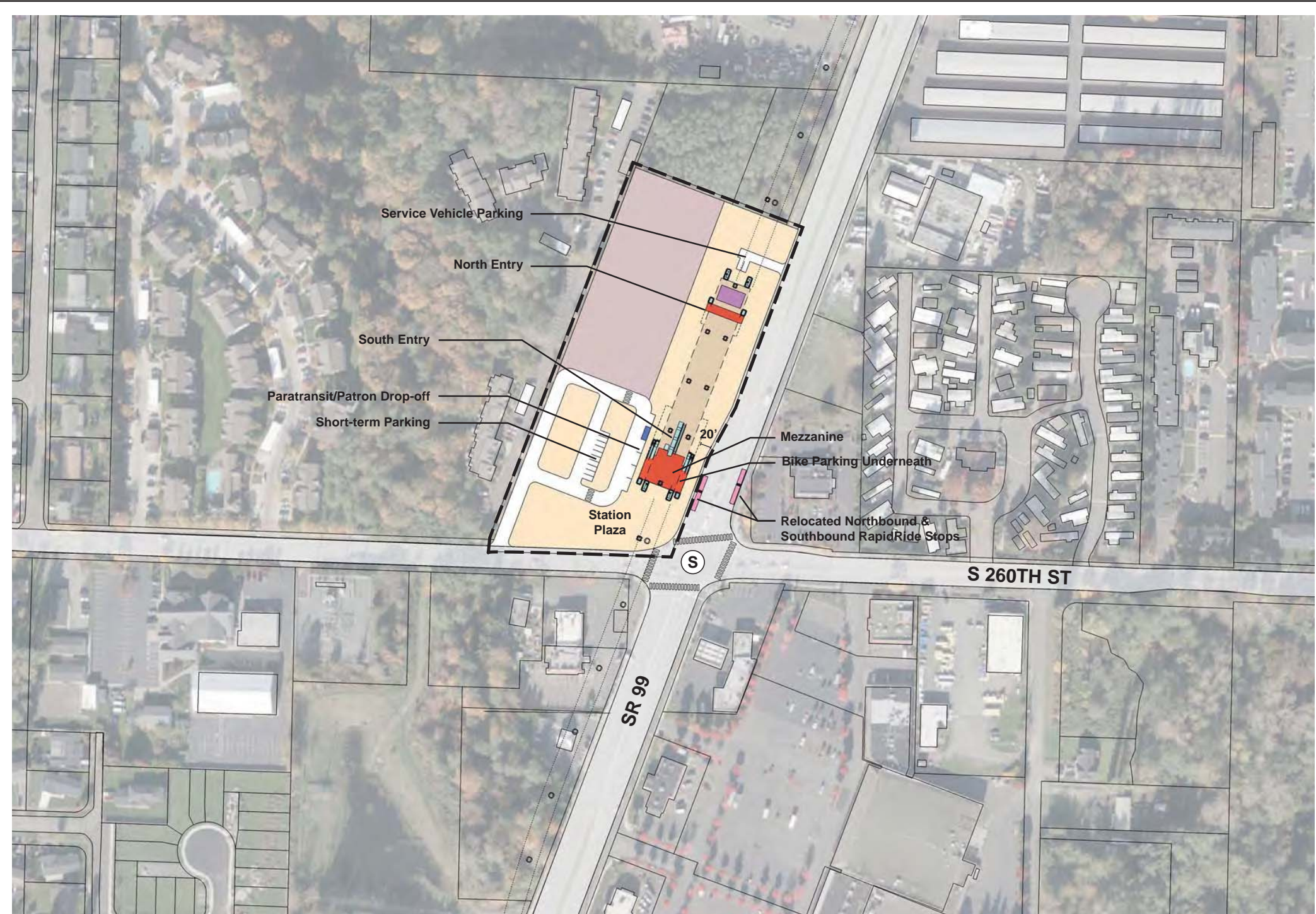


FINAL EIS - CONCEPTUAL DESIGN
TRACK PLAN AND PROFILE & ROADWAY RECONSTRUCTION
S 260TH WEST STATION OPTION (POTENTIAL ADDITIONAL STATION)
STA 101+00 TO STA 111+87.66

AUGUST 2016

SR99-G5-PP09
129

SOUND TRANSIT FEDERAL WAY LINK EXTENSION



- STATION PLAZA
- VERTICAL CIRCULATION
- TICKETING / ENTRY HALL
- PLATFORM
- ANCILLARY SPACES
- TPSS
- BUS LAYOVER
- BUS PICK-UP / DROP OFF
- PARATRANSIT
- BICYCLE STORAGE
- CONSTRUCTION STAGING

- STATION AREA FOOTPRINT
- S

SIGNALIZED INTERSECTION (EXISTING)
- S

SIGNALIZED INTERSECTION (PROPOSED)

ASSUMPTIONS:

S 260th West Station Option	
Alternative(s)	SR 99; I-5 to SR 99
Boardings	1,000
Station Configuration	
Terminus / In-Line	In-Line
Station Type	Side Platform - Elevated
Platform Width	14'
Tail track	N/A
Crossover	TBD
TPSS	No
Program	
KC Metro Ancillary Spaces (SF)	N/A
ST Ancillary Spaces (SF)	1,200
Total Ancillary Spaces (SF)	1,200
Vertical Circulation	
# of entrances	2
# of escalators	3
# of staircases (patron)	3
# of elevators	5
# of emergency stairs	4
Bus/ Paratransit Facilities	
Bus bays (KCM)	N/A
Bus bays (ST)	N/A
Rapid Ride	On-street at SR 99
Bus layover (KCM)	N/A
Bus layover (ST)	N/A
Paratransit	1 space
Communications Facility	Tier 1
Parking & Amenities	
Bike storage	900 SF
Patron drop-off	2 spaces
Short-term patron parking	7 to 10 spaces
Staff parking	N/A
Service/emerg. vehicle park.	2 spaces, combined
Signal bungalow / TPSS park.	N/A
Patron parking	N/A

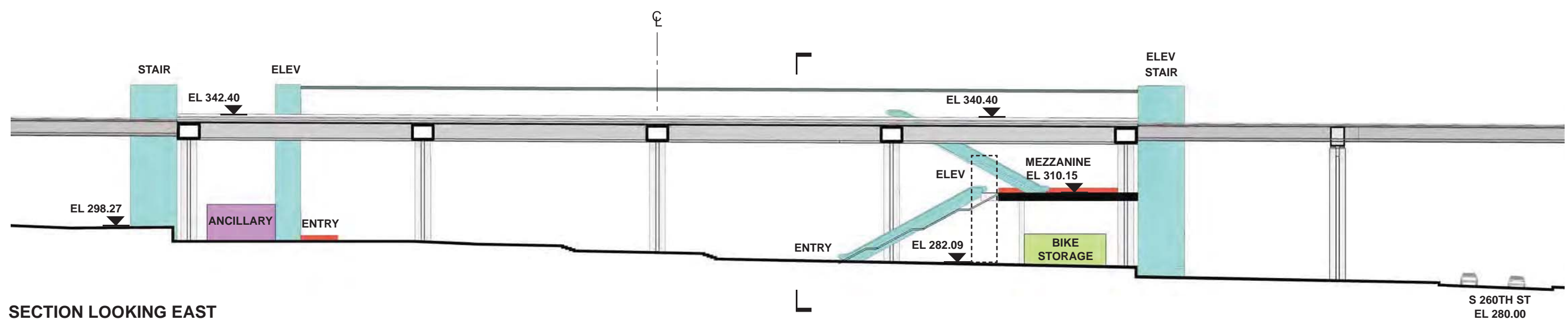
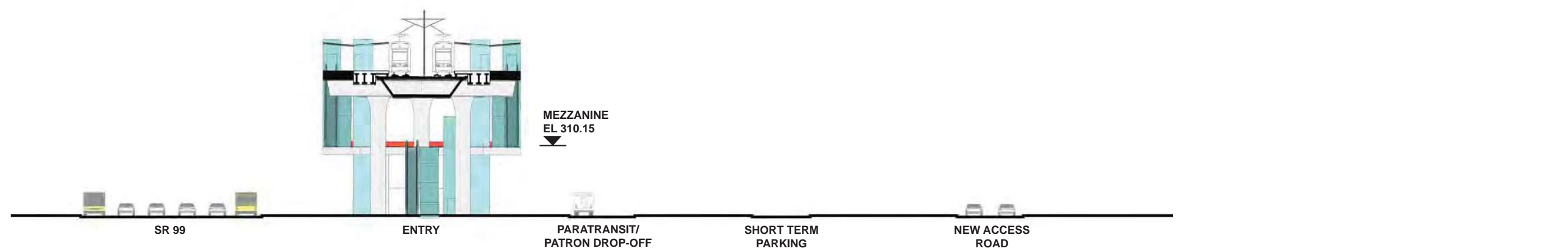


FINAL EIS - CONCEPTUAL DESIGN
S 260TH WEST STATION OPTION
(POTENTIAL ADDITIONAL STATION)
SITE PLAN

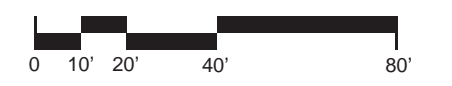
AUGUST 2016

FWLE_S99_AP013
130

SOUND TRANSIT FEDERAL WAY LINK EXTENSION



- | | |
|------------------------|------------------------|
| STATION PLAZA | BUS LAYOVER |
| VERTICAL CIRCULATION | BUS PICK-UP / DROP OFF |
| TICKETING / ENTRY HALL | PARATRANSIT |
| PLATFORM | BICYCLE STORAGE |
| ANCILLARY SPACES | CONSTRUCTION STAGING |
| TPSS | |



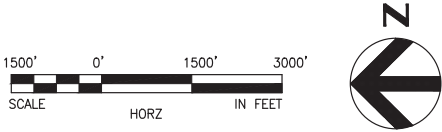
FINAL EIS - CONCEPTUAL DESIGN
S 260TH WEST STATION OPTION
(POTENTIAL ADDITIONAL STATION)
SECTIONS

AUGUST 2016
FWLE_S99_AX013
131

SOUND TRANSIT FEDERAL WAY LINK EXTENSION



SR99 SHEET LAYOUT MATRIX																
	1	2	3	4	5	6	7	8	9	10	11	12	13	14	15	16
A - SR 99 ALTERNATIVE	X	X	X	X	X	X	X	X	X	X	X	X	X	X	X	X
B - S 216TH WEST STATION OPTION (POTENTIAL ADDITIONAL STATION)	X	X	X													
C - S 216TH EAST STATION OPTION (POTENTIAL ADDITIONAL STATION)		X	X													
D - KENT/DES MOINES SR 99 MEDIAN STATION OPTION				X	X	X										
E - KENT/DES MOINES SR 99 EAST STATION OPTION				X	X	X	X									
F - KENT/DES MOINES HC CAMPUS STATION OPTION			X	X	X	X	X									
F - KDM HC CAMPUS OPTION FROM S 216TH WEST STATION OPTION						X	X	X	X	X						
G - S 260TH WEST STATION OPTION (POTENTIAL ADDITIONAL STATION)					X	X	X	X	X							
H - S 260TH EAST STATION OPTION (POTENTIAL ADDITIONAL STATION)							X	X	X	X						
J - S 272ND REDONDO TRENCH STATION OPTION								X	X	X	X	X	X	X		
K - FEDERAL WAY SR 99 STATION OPTION															X	X



I - NOT USED

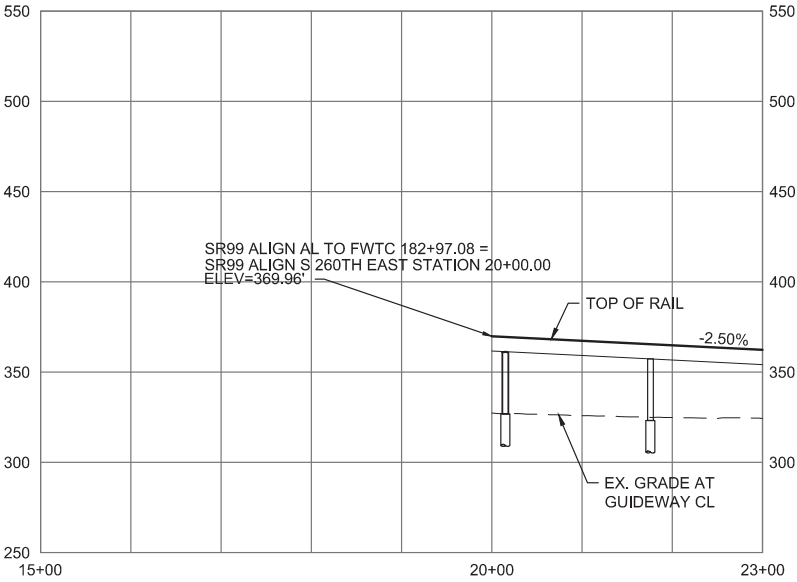
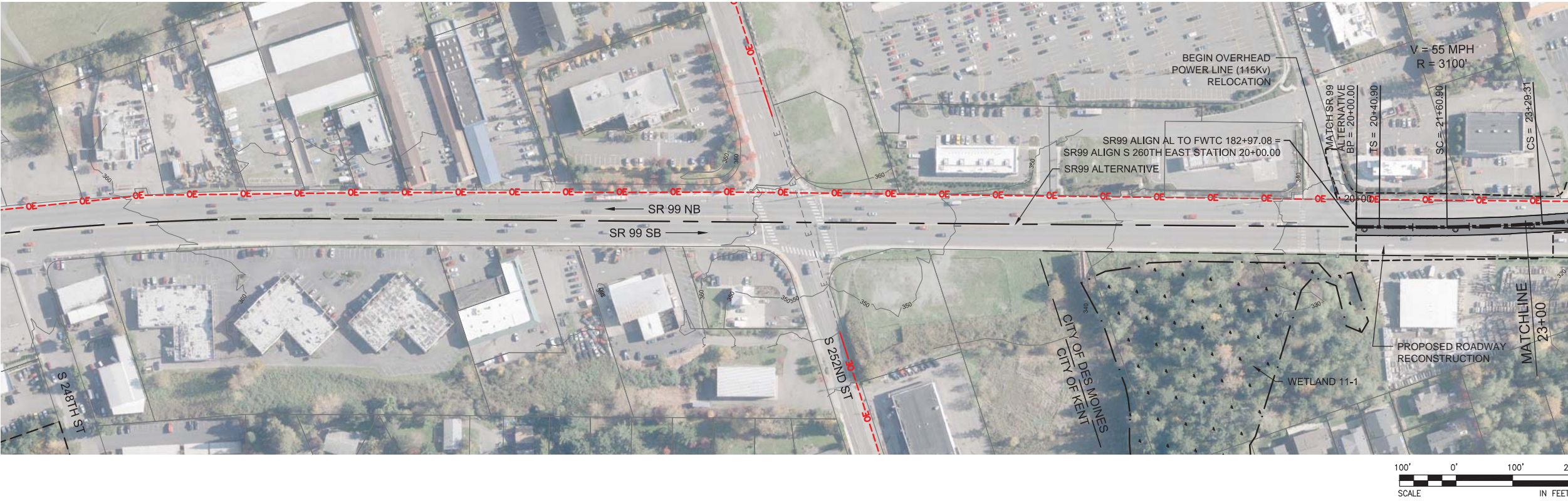


FINAL EIS - CONCEPTUAL DESIGN
S 260TH EAST STATION OPTION (POTENTIAL ADDITIONAL STATION)
SHEET INDEX KEYMAP

AUGUST 2016

SR99-H00-GX02
132

SOUND TRANSIT FEDERAL WAY LINK EXTENSION



9/27/2016 9:21:08 AM
C:\PW\WORKING\SEAD1114119H_S260TH_EAST_STATION.DWG

CFX

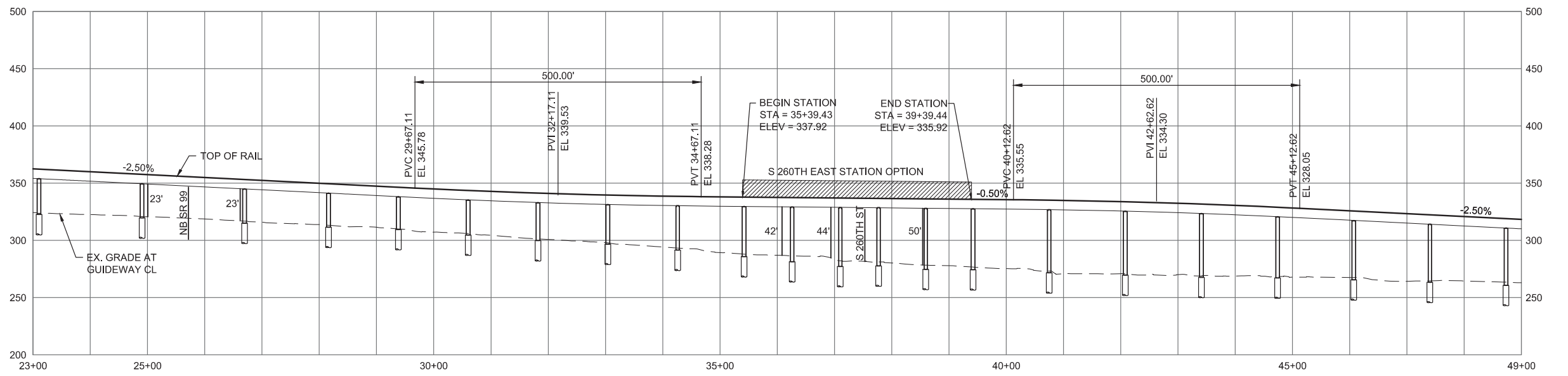
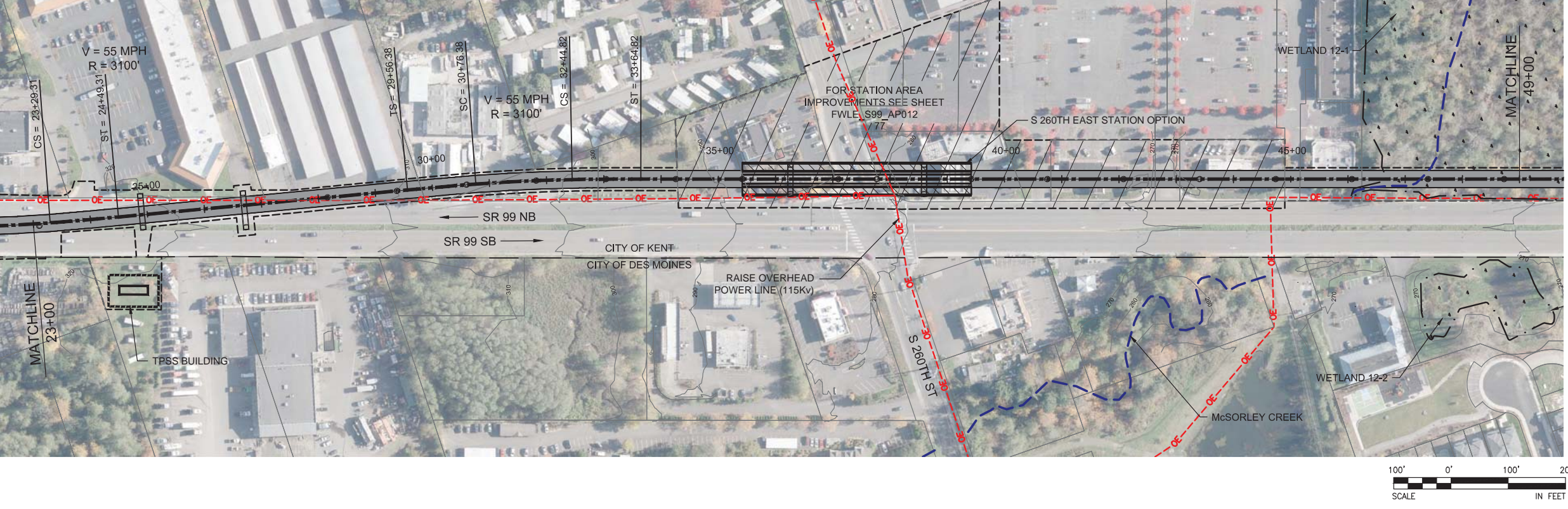


FINAL EIS - CONCEPTUAL DESIGN
TRACK PLAN & PROFILE AND ROADWAY RECONSTRUCTION
S 260TH EAST STATION OPTION (POTENTIAL ADDITIONAL STATION)
STA 20+00 TO STA 23+00

AUGUST 2016

SR99-H1-PP07
137

SOUND TRANSIT FEDERAL WAY LINK EXTENSION



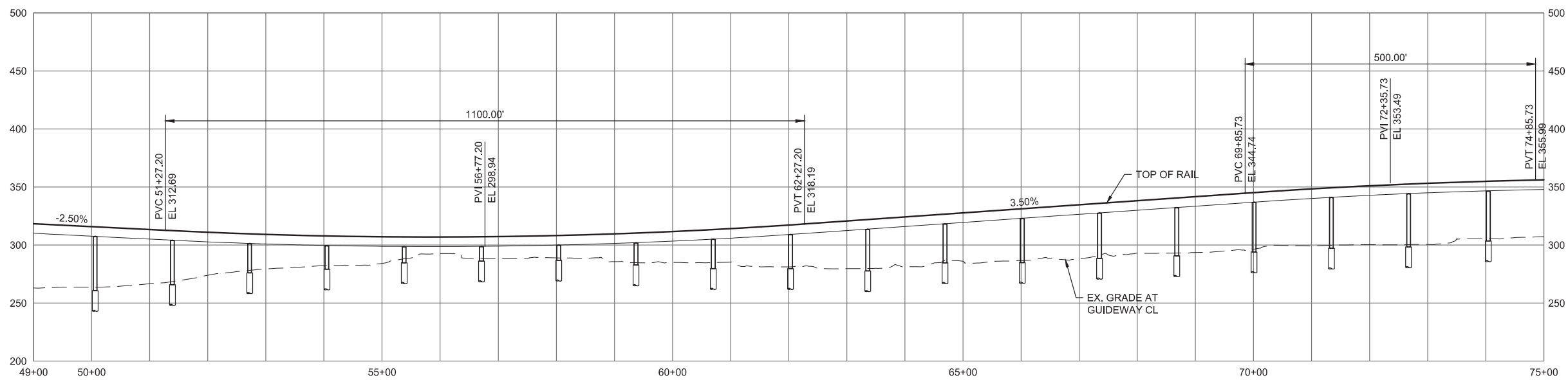
9/27/2016 9:21:21 AM
C:\P\WORKING\SEAD1114119H_S260TH_EAST_STATION.DWG



FINAL EIS - CONCEPTUAL DESIGN
TRACK PLAN & PROFILE AND ROADWAY RECONSTRUCTION
S 260TH EAST STATION OPTION (POTENTIAL ADDITIONAL STATION)
STA 23+00 TO STA 49+00

AUGUST 2016
SR99-H2-PP08
134

SOUND TRANSIT FEDERAL WAY LINK EXTENSION



FINAL EIS - CONCEPTUAL DESIGN

TRACK PLAN & PROFILE AND ROADWAY RECONSTRUCTION

S 260TH EAST STATION OPTION (POTENTIAL ADDITIONAL STATION)

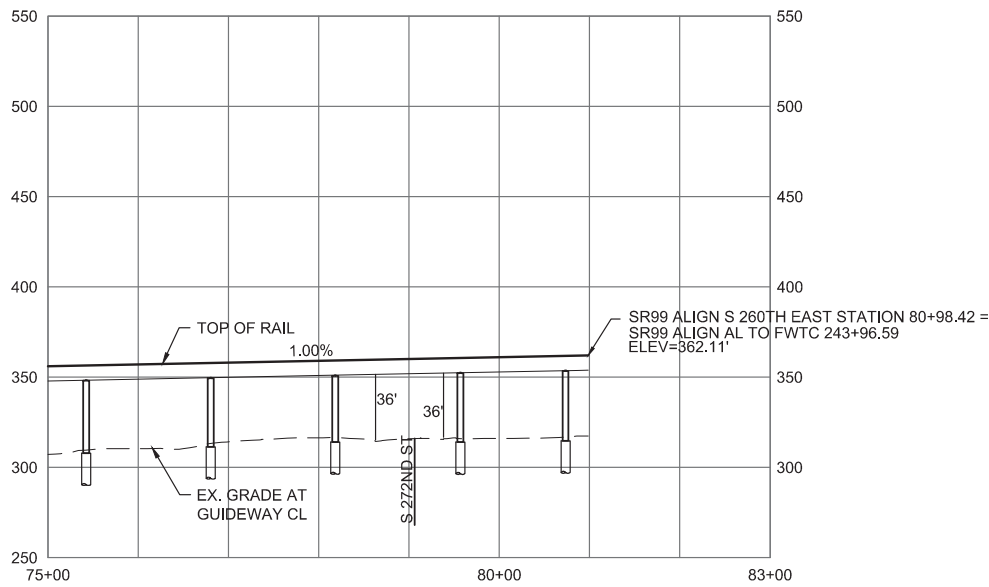
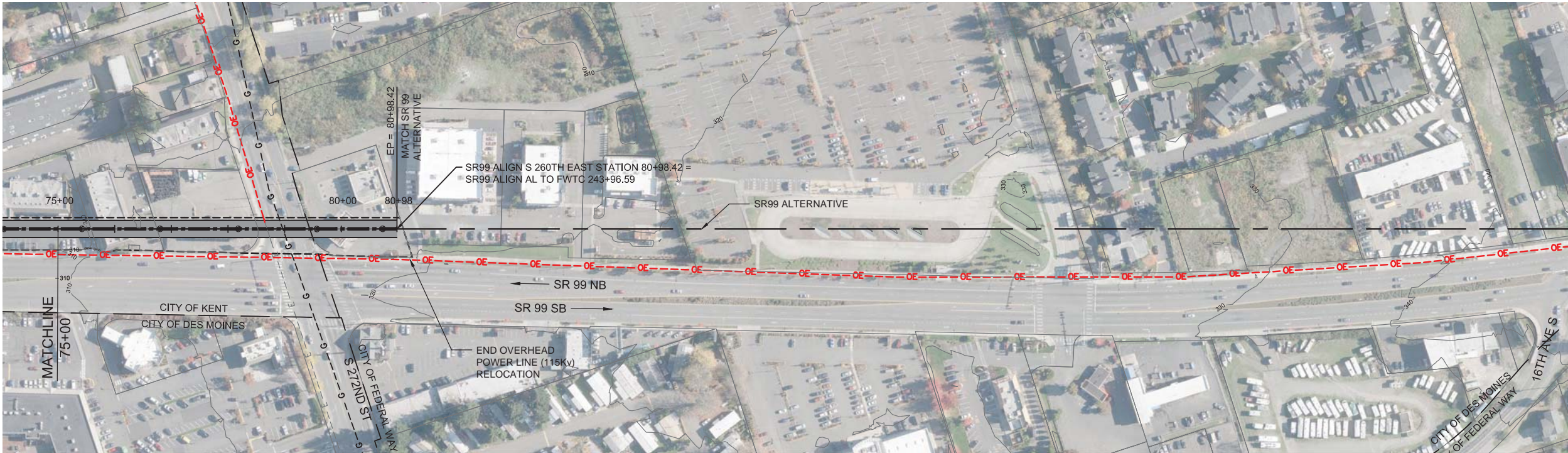
STA 49+00 TO STA 75+00

AUGUST 2016

SR99-H3-PP09

135

SOUND TRANSIT FEDERAL WAY LINK EXTENSION



9/27/2016 9:21:48 AM
C:\P\WORKING\SEAD1114119H_S260TH_EAST_STATION.DWG

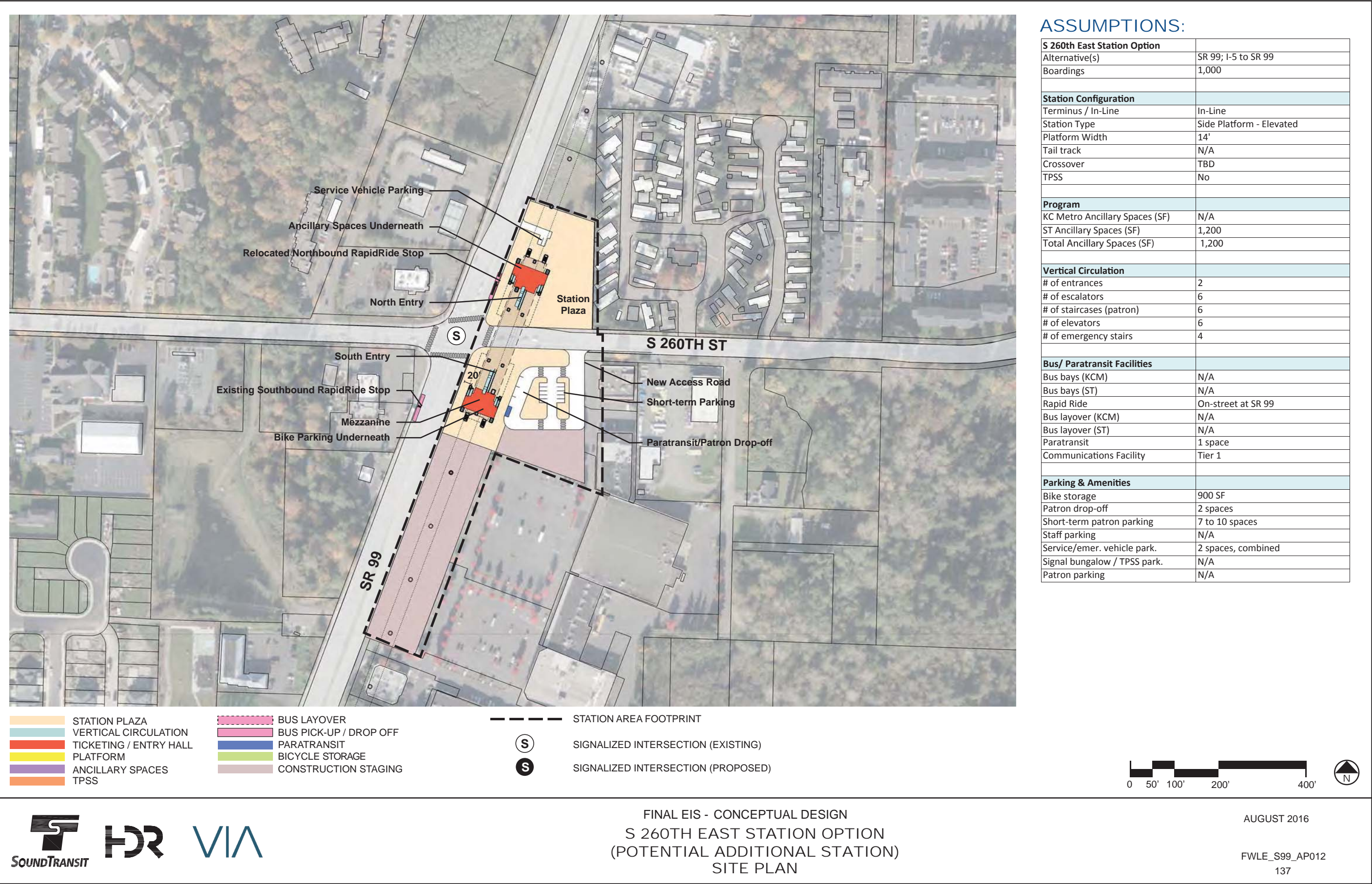


FINAL EIS - CONCEPTUAL DESIGN
TRACK PLAN & PROFILE AND ROADWAY RECONSTRUCTION
S 260TH EAST STATION OPTION (POTENTIAL ADDITIONAL STATION)
STA 75+00 TO STA 80+98.42

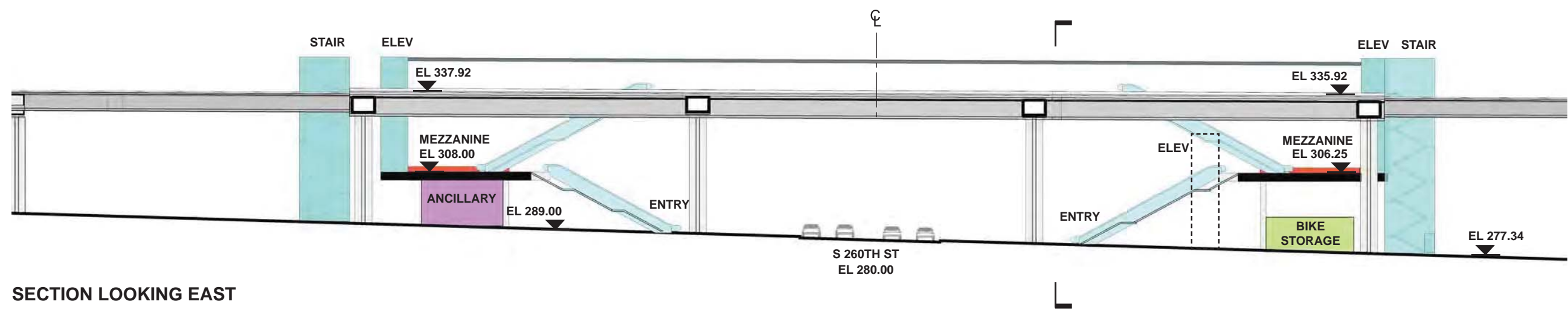
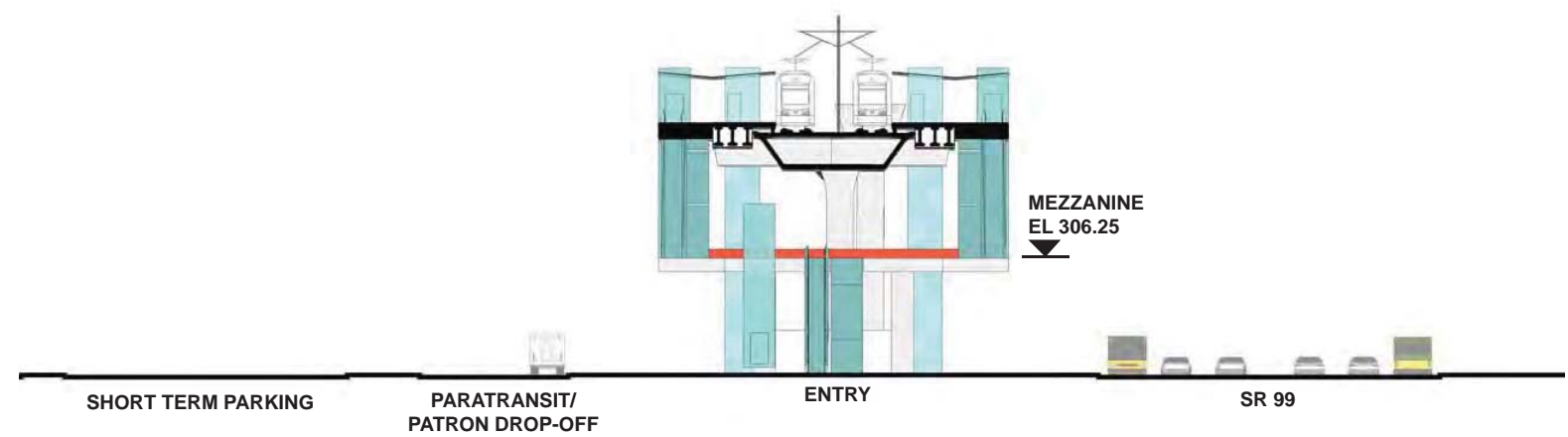
AUGUST 2016

SR99-H4-PP10
136

SOUND TRANSIT FEDERAL WAY LINK EXTENSION



SOUND TRANSIT FEDERAL WAY LINK EXTENSION



- STATION PLAZA
- VERTICAL CIRCULATION
- TICKETING / ENTRY HALL
- PLATFORM
- ANCILLARY SPACES
- TPSS
- BUS LAYOVER
- BUS PICK-UP / DROP OFF
- PARATRANSIT
- BICYCLE STORAGE
- CONSTRUCTION STAGING



FINAL EIS - CONCEPTUAL DESIGN
S 260TH EAST STATION OPTION
(POTENTIAL ADDITIONAL STATION)
SECTIONS

AUGUST 2016

FWLE_S99_AX012
138