

***FINAL EIS - CONCEPTUAL DESIGN SR 99 TO I-5 ALTERNATIVE***

This page intentionally left blank.



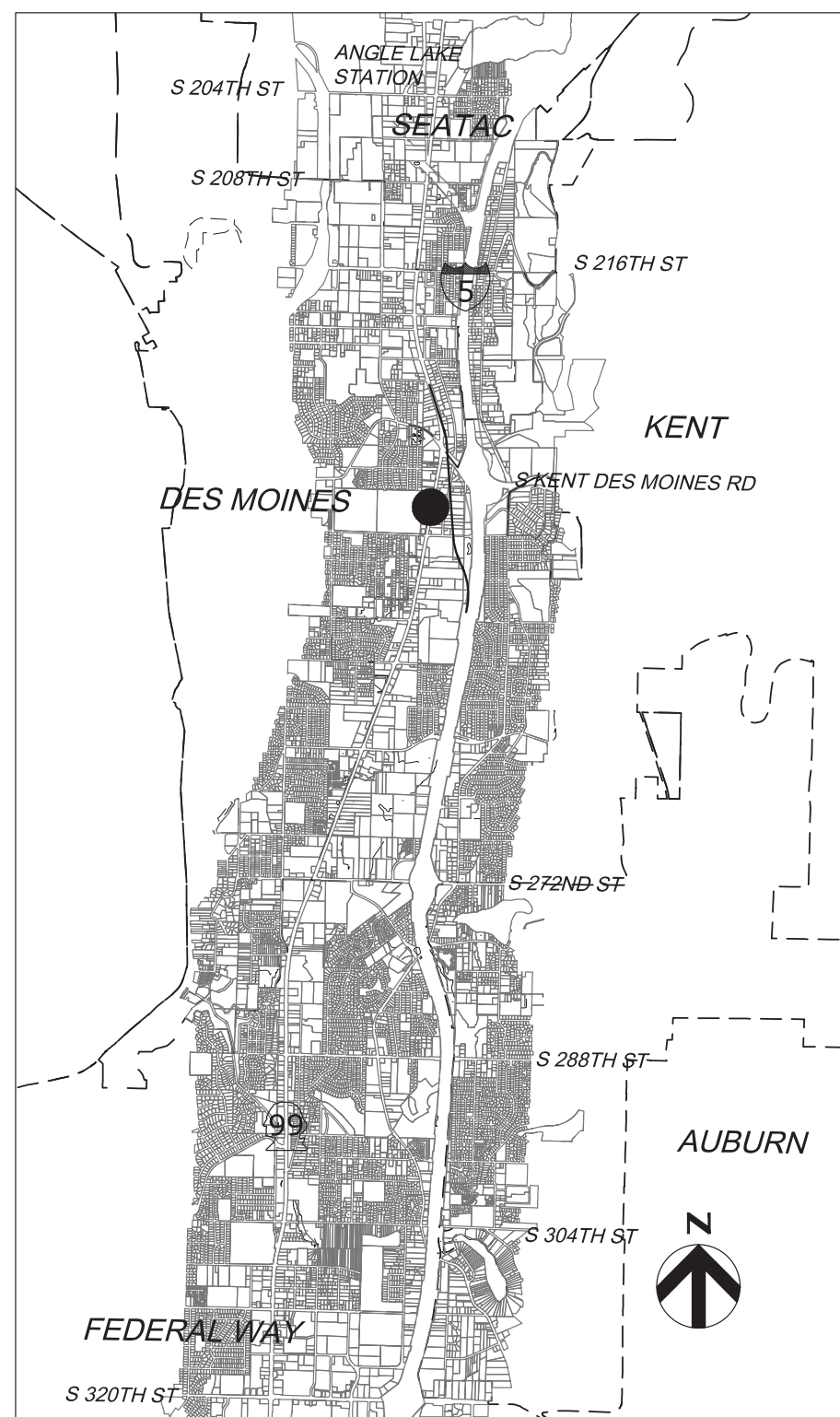
# ***SOUND TRANSIT FEDERAL WAY LINK EXTENSION***

FINAL EIS - CONCEPTUAL DESIGN SR 99 TO I-5 ALTERNATIVE

AUGUST 2016

SHEET KEY

SR 99 TO I-5 ALTERNATIVE



***PROJECT LOCATION MAP***

SOUND TRANSIT FEDERAL WAY LINK EXTENSION

Sheet No.	Drawing No.	Sheet Title	
		SR99 TO I-5 ALTERNATIVE	
154	SR99-L00-GX00	COVER SHEET	
155	SR99-L00-GX01	SHEET INDEX	
156	SR99-L00-GX02	SHEET INDEX KEYMAP	
157	SR99-L1-PP01	TRACK PLAN AND PROFILE STA 10+00 TO STA 35+00	
158	SR99-L2-PP02	TRACK PLAN AND PROFILE STA 35+00 TO STA 63+00	
159	SR99-L3-PP03	TRACK PLAN AND PROFILE STA 63+00 TO STA 79+97.70	
160	FWLE_S99_to_I-5_AP001	KENT/DES MOINES 30TH AVENUE WEST STATION - SITE PLAN	
161	FWLE_S99_to_I-5_AX001	KENT/DES MOINES 30TH AVENUE WEST STATION - SECTIONS	

ABBREVIATIONS

<b>B</b> BP	BEGIN POINT
<b>C</b> CTR CL CS	CENTER CENTERLINE CURVE TO SPIRAL
<b>D</b> DO DWG	DESIGN OPTION DRAWING
<b>E</b> E EL EP EX	EAST/ELECTRICAL ELEVATION END POINT EXISTING
<b>F</b> FWLE FWTC	FEDERAL WAY LINK EXTENSION FEDERAL WAY TRANSIT CENTER
<b>G</b> G	GAS
<b>H</b> HC HORZ	HIGHLINE COLLEGE HORIZONTAL
<b>K</b> KC KCM KDM Kv	KING COUNTY KING COUNTY METRO KENT/DES MOINES KILOVOLTS
<b>M</b> MPH	MILES PER HOUR
<b>N</b> N NB	NORTH NORTHBOUND
<b>O</b> OE	OVERHEAD ELECTRICAL
<b>P</b> PC PL PS PT PVC PVI PVT	POINT OF CURVATURE PLACE POINT OF SWITCH POINT OF TANGENCY POINT OF VERTICAL CURVATURE POINT OF VERTICAL INTERSECTION POINT OF VERTICAL TANGENCY
<b>R</b> R RD ROW	RADUIS ROAD RIGHT OF WAY

<b>S</b> S SB SC SF SR ST  STA	SOUTH SOUTH BOUND SPIRAL TO CURVE SQUARE FEET STATE ROUTE STREET, SPIRAL TO TANGENT, or SOUND TRANSIT STATION
<b>T</b> TPSS TS TYP	TRACTION POWER SUBSTATION TANGENT TO SPIRAL TYPICAL
<b>V</b> V	VELOCITY

EXISTING FEATURES

	CITY LIMITS
	LOT LINE
	GAS
	OVERHEAD ELECTRICAL
	UNDERGROUND ELECTRICAL
	WETLAND
	STREAM
	TRACK CENTERLINE
	EXISTING GROUND (PROFILE)
	CONTOUR LINE

PROPOSED FEATURES

	PROPOSED/EXISTING WSDOT ROW
	CONSTRUCTION FOOTPRINT
	GUIDEWAY CENTERLINE
	CURB AND SIDEWALK
	BOTTOM OF STRUCTURE (PROFILE)
	TOP OF RAIL (PROFILE)
	FILL RETAINING WALL
	CUT RETAINING WALL
	STATION PLATFORM
	AT-GRADE /TRENCH (BALLASTED) TRACK
	ELEVATED GUIDEWAY
	COLUMNS / STRADDLE BENTS
	LONG SPAN COLUMNS
	ABUTMENT WALL
	TPSS BUILDING
	NEW SIGNAL

10/3/2016 2:20:26 PM  
C:\P\WORKING\SEA\011417\SR99-L00-GX01.DWG

FOXC



FINAL EIS - CONCEPTUAL DESIGN  
SHEET INDEX  
SR 99 TO I-5 ALTERNATIVE

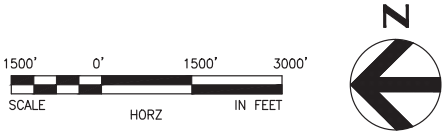
AUGUST 2016

SR99-L00-GX01  
155

# SOUND TRANSIT FEDERAL WAY LINK EXTENSION



SR99 TO I-5 SHEET LAYOUT MATRIX			
	1	2	3
L - SR 99 TO I-5 ALTERNATIVE	X	X	X



10/3/2016 2:21:23 PM  
C:\P\WORKING\SEA\011417\SR99-L00-GX02.DWG



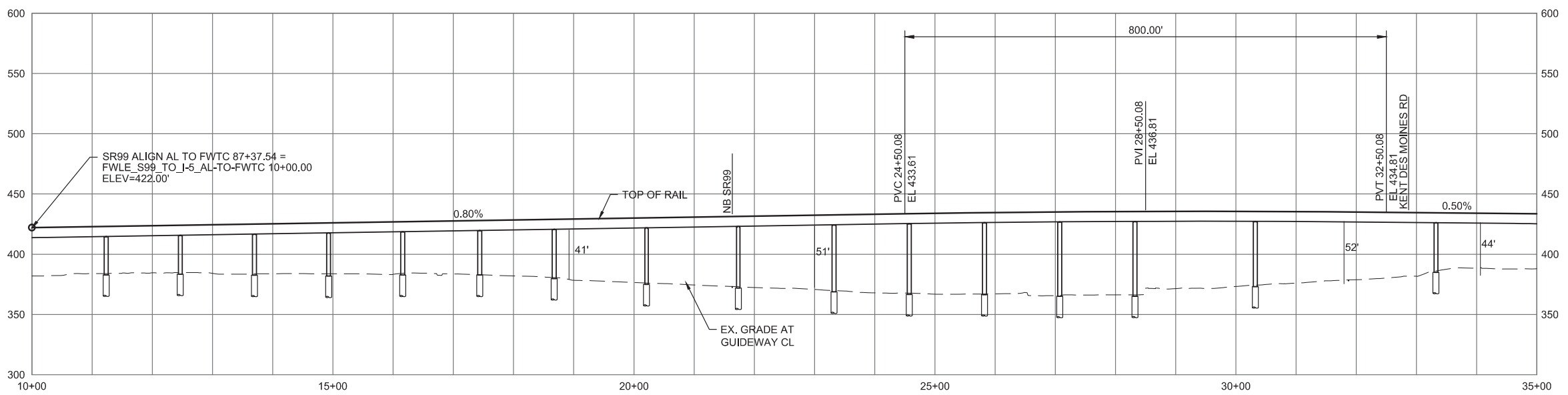
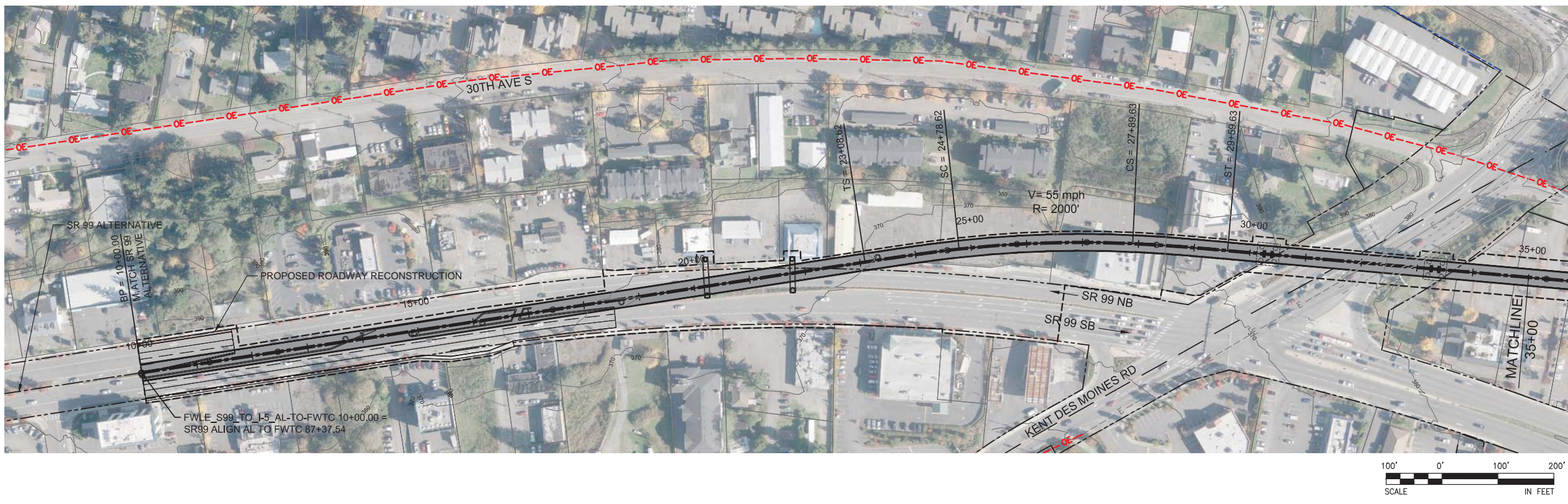
FINAL EIS - CONCEPTUAL DESIGN  
SR 99 TO I-5 ALTERNATIVE  
SHEET INDEX KEYMAP

AUGUST 2016

SR99-L00-GX02  
154



# SOUND TRANSIT FEDERAL WAY LINK EXTENSION



9/27/2016 9:29:47 AM C:\PW\WORKING\SEAD111419\FWLE\_S99\_TO\_I-5.DWG

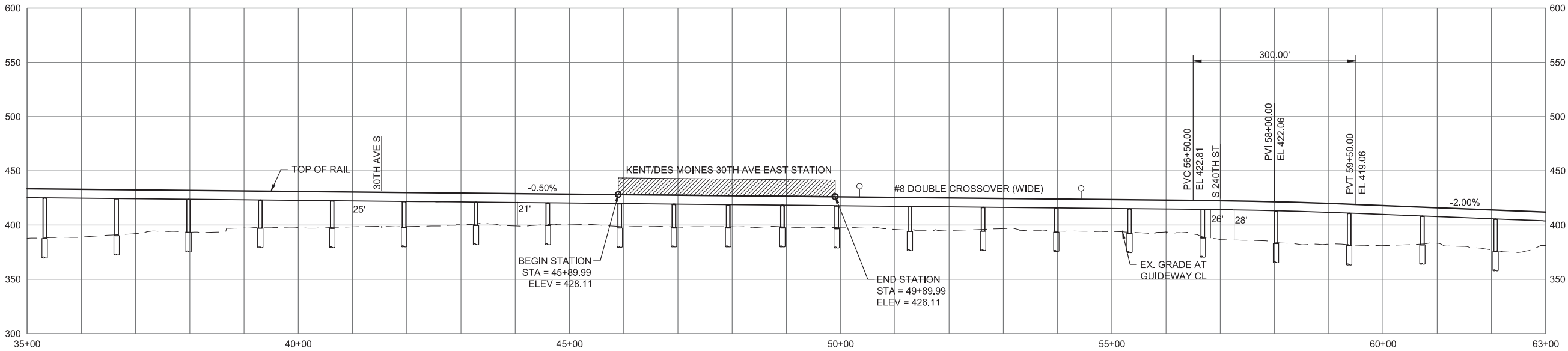


FINAL EIS - CONCEPTUAL DESIGN  
TRACK PLAN & PROFILE AND ROADWAY RECONSTRUCTION  
SR 99 TO I-5 ALTERNATIVE  
STA 10+00 TO STA 35+00

AUGUST 2016  
SR99-L1-PP01  
157



SOUND TRANSIT FEDERAL WAY LINK EXTENSION



9/27/2016 9:30:02 AM  
C:\P\WORKING\SEAD111419\FWLE SR99\_TO\_I-5.DWG



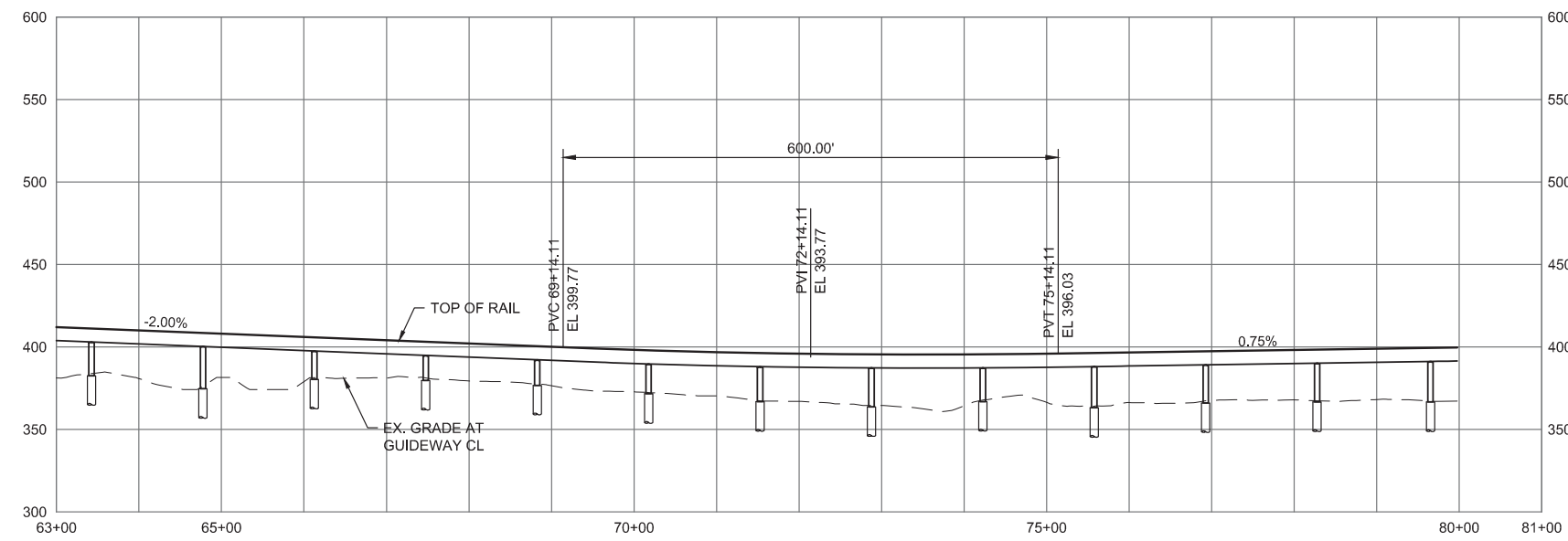
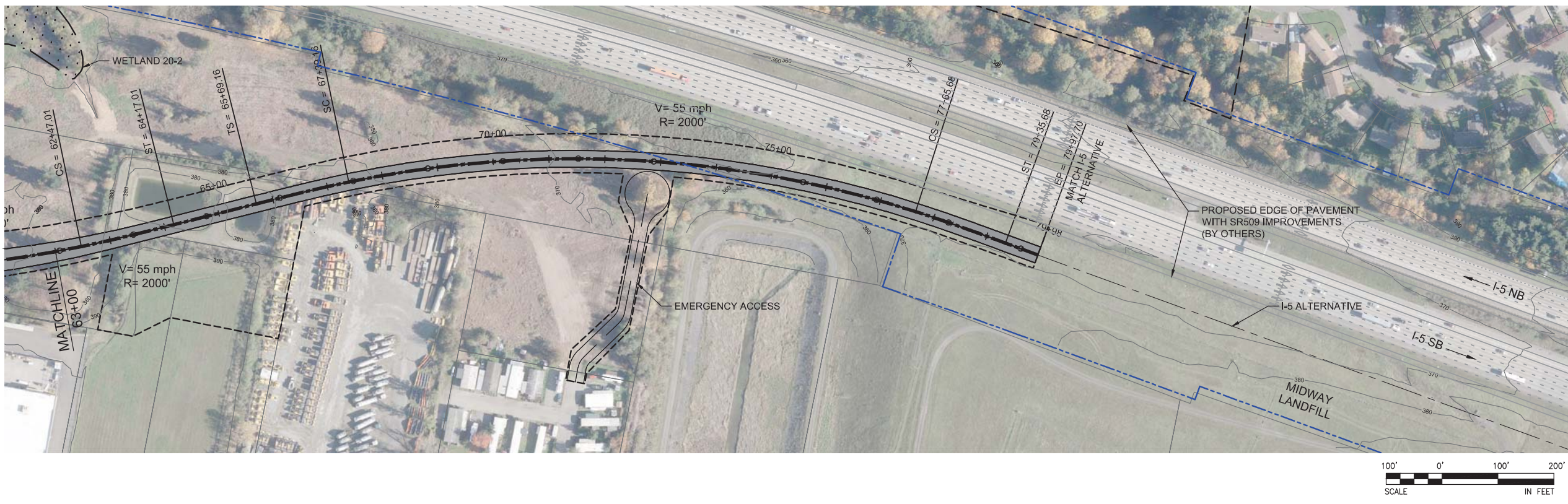
FINAL EIS - CONCEPTUAL DESIGN  
TRACK PLAN & PROFILE AND ROADWAY RECONSTRUCTION  
SR 99 TO I-5 ALTERNATIVE  
STA 35+00 TO STA 63+00

AUGUST 2016

SR99-L2-PP02  
158



# SOUND TRANSIT FEDERAL WAY LINK EXTENSION



10/3/2016 2:32:31 PM  
C:\P\WORKING\SEA\01141191\FWLE\_SRP9\_TO\_I5.DWG

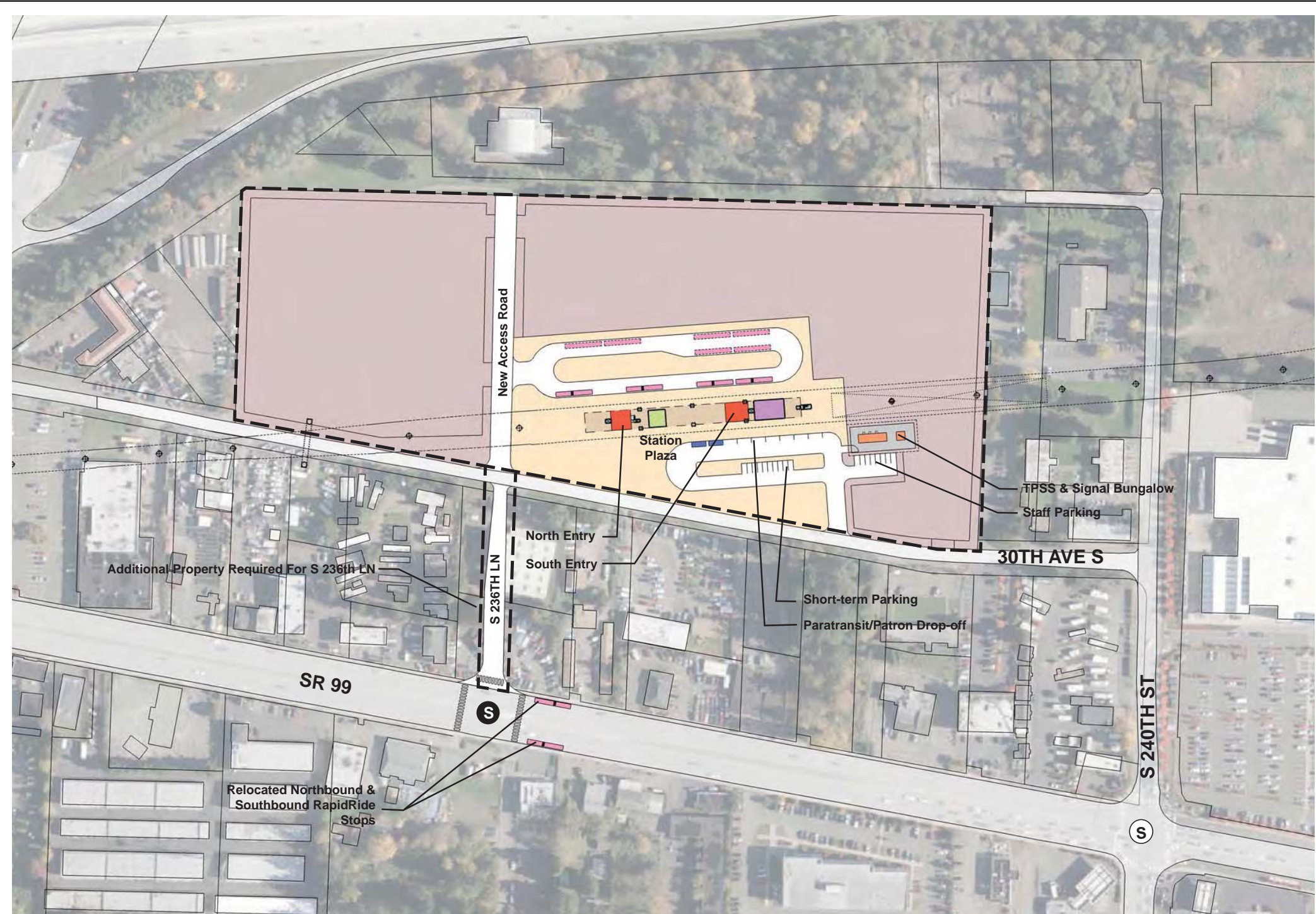


FINAL EIS - CONCEPTUAL DESIGN  
TRACK PLAN & PROFILE AND ROADWAY RECONSTRUCTION  
SR 99 TO I-5 ALTERNATIVE  
STA 63+00 TO STA 79+97.70

AUGUST 2016  
SR99-L3-PP03  
159



SOUND TRANSIT FEDERAL WAY LINK EXTENSION



ASSUMPTIONS:

Kent/Des Moines 30th Avenue East Station	
Alternative(s)	SR 99 to I-5
Boardings	2,500
Boardings (with 216th Station)	2,500
Boardings (interim terminus)	4,500
Station Configuration	
Terminus / In-Line	Interim Terminus
Station Type	Center Platform - Elevated
Platform Width	34'
Tail track	900'
Crossover	Yes
TPSS	Yes
Program	
KC Metro Ancillary Spaces (SF)	200
ST Ancillary Spaces (SF)	1,800
Total Ancillary Spaces (SF)	2,000
Vertical Circulation	
# of entrances	2
# of escalators	1
# of staircases (patron)	1
# of elevators	2
# of emergency stairs	2
Bus/ Paratransit Facilities	
Bus bays (KCM)	2 bays, one 60' coach each
Bus bays (ST)	1 bay, two 60' coaches
Rapid Ride	On-street at SR 99
Bus layover (KCM)	2 bays, two 60' coaches each
Bus layover (ST)	1 bay, two 60' coaches
Paratransit spaces	1 permanent, 1 interim
Communications Facility	Tier 2
Parking & Amenities	
Bike storage	900 SF
Patron drop-off	6 spaces
Short-term patron parking	7 to 10 spaces
Staff parking	4 spaces
Service/emerg. vehicle park.	2 spaces, separate lot
Signal bungalow / TPSS park.	2 spaces, dedicated
Long-term patron parking	500 spaces (structure)
Temporary patron parking*	500 spaces (surface)
Total proposed patron parking*	1000 spaces

\*Only required for interim terminus condition



FINAL EIS - CONCEPTUAL DESIGN  
KENT/DES MOINES 30TH AVENUE EAST STATION  
SITE PLAN

AUGUST 2016

FWLE\_S99\_to\_I-5\_AP001  
160

SOUND TRANSIT FEDERAL WAY LINK EXTENSION

