

***FINAL EIS - CONCEPTUAL DESIGN I-5 TO SR99 ALTERNATIVE***

This page intentionally left blank.



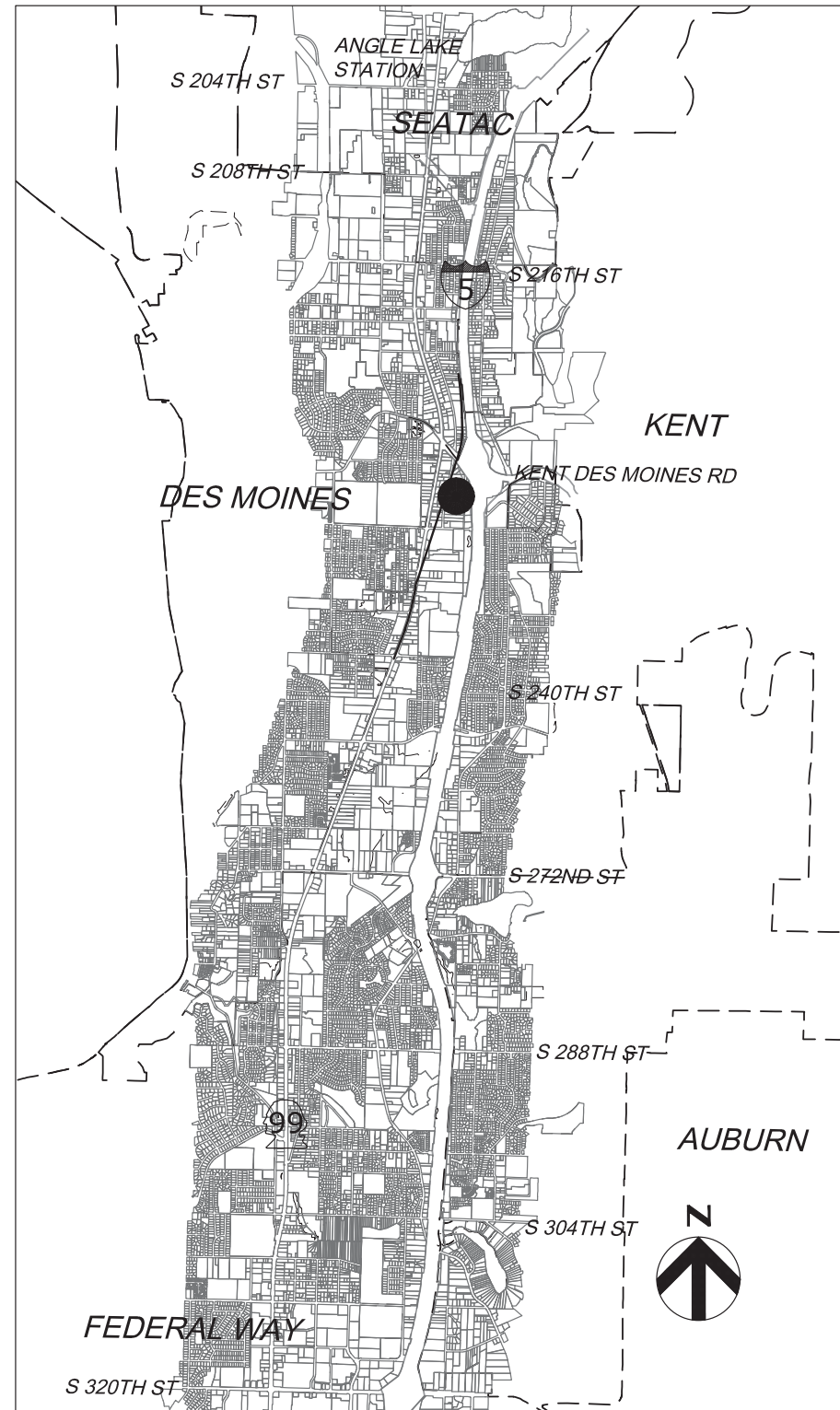
# **SOUND TRANSIT FEDERAL WAY LINK EXTENSION**

FINAL EIS - CONCEPTUAL DESIGN I-5 TO SR99 ALTERNATIVE

AUGUST 2016

SHEET KEY

I-5 TO SR 99 ALTERNATIVE  
I-5 TO SR 99 260TH WEST STATION OPTION



**PROJECT LOCATION MAP**

SOUND TRANSIT FEDERAL WAY LINK EXTENSION

Sheet No.	Drawing No.	Sheet Title	
I-5 TO SR99 ALTERNATIVE			
161	I5-P00-GX00	COVER SHEET	
162	I5-P00-GX01	SHEET INDEX	
163	I5-P00-GX02	SHEET INDEX KEYMAP	
164	I5-P1-PP01	TRACK PLAN AND PROFILE STA 20+00 TO STA 36+00	
165	I5-P2-PP02	TRACK PLAN AND PROFILE STA 36+00 TO STA 62+00	
166	I5-P2-PP03	TRACK PLAN AND PROFILE STA 62+00 TO STA 88+00	
167	I5-P4-PP04	TRACK PLAN AND PROFILE STA 88+00 TO STA 108+83.60	
168	FWLE_I5_to_S99_AP001	KENT/DES MOINES 30TH AVENUE WEST STATION - SITE PLAN	
169	FWLE_I5_to_S99_AX001	KENT/DES MOINES 30TH AVENUE WEST STATION - SECTIONS	
I-5 TO SR99 260TH WEST STATION OPTION (POTENTIAL ADDITIONAL STATION)			
170	I5-R00-GX02	SHEET INDEX KEYMAP	
171	I5-R01-PP01	TRACK PLAN AND PROFILE STA 20+00 TO STA 40+00	
172	I5-R02-PP02	TRACK PLAN AND PROFILE STA 40+00 TO STA 57+00	

ABBREVIATIONS

<b>B</b> BP	BEGIN POINT	<b>S</b> S SB SC SF SR ST  STA	SOUTH SOUTH BOUND SPIRAL TO CURVE SQUARE FEET STATE ROUTE STREET, SPIRAL TO TANGENT, or SOUND TRANSIT STATION
<b>C</b> CTR CL CS	CENTER CENTERLINE CURVE TO SPIRAL	<b>T</b> TPSS TS TYP	TRACTION POWER SUBSTATION TANGENT TO SPIRAL TYPICAL
<b>D</b> DO DWG	DESIGN OPTION DRAWING	<b>V</b> V	VELOCITY
<b>E</b> E EL EP EX	EAST/ELECTRICAL ELEVATION END POINT EXISTING		
<b>F</b> FWLE FWTC	FEDERAL WAY LINK EXTENSION FEDERAL WAY TRANSIT CENTER		
<b>G</b> G	GAS		
<b>H</b> HC HORZ	HIGHLINE COLLEGE HORIZONTAL		
<b>K</b> KC KCM KDM Kv	KING COUNTY KING COUNTY METRO KENT/DES MOINES KILOVOLTS		
<b>M</b> MPH	MILES PER HOUR		
<b>N</b> N NB	NORTH NORTHBOUND		
<b>O</b> OE	OVERHEAD ELECTRICAL		
<b>P</b> PC PL PS PT PVC PVI PVT	POINT OF CURVATURE PLACE POINT OF SWITCH POINT OF TANGENCY POINT OF VERTICAL CURVATURE POINT OF VERTICAL INTERSECTION POINT OF VERTICAL TANGENCY		
<b>R</b> R RD ROW	RADUIS ROAD RIGHT OF WAY		

EXISTING FEATURES

	CITY LIMITS
	LOT LINE
	GAS
	OVERHEAD ELECTRICAL
	UNDERGROUND ELECTRICAL
	WETLAND
	STREAM
	TRACK CENTERLINE
	EXISTING GROUND (PROFILE)
	CONTOUR LINE

PROPOSED FEATURES

	PROPOSED/EXISTING WSDOT ROW
	CONSTRUCTION FOOTPRINT
	GUIDEWAY CENTERLINE
	CURB AND SIDEWALK
	BOTTOM OF STRUCTURE (PROFILE)
	TOP OF RAIL (PROFILE)
	FILL RETAINING WALL
	CUT RETAINING WALL
	STATION PLATFORM
	AT-GRADE /TRENCH (BALLASTED) TRACK
	ELEVATED GUIDEWAY
	COLUMNS / STRADDLE BENTS
	LONG SPAN COLUMNS
	ABUTMENT WALL
	TPSS BUILDING
	NEW SIGNAL

10/3/2016 2:39:17 PM  
C:\P\WORKING\SEA\10788401\EA\00-GX01.DWG

FOXC



FINAL EIS - CONCEPTUAL DESIGN  
SHEET INDEX  
I-5 TO SR 99 ALTERNATIVE

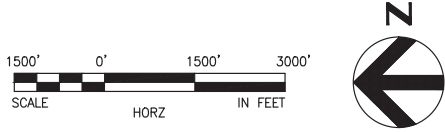
AUGUST 2016

I5-P00-GX01  
162

# SOUND TRANSIT FEDERAL WAY LINK EXTENSION



I-5 TO SR99 SHEET LAYOUT MATRIX				
	1	2	3	4
P - I-5 TO SR 99 ALTERNATIVE	X	X	X	X
R - I-5 TO SR 99 260TH WEST STATION OPTION (POTENTIAL ADDITIONAL STATION)			X	X



10/3/2016 2:42:18 PM  
C:\P\WORKING\SEA\10788401\EA\00-GX02.DWG  
FOXC

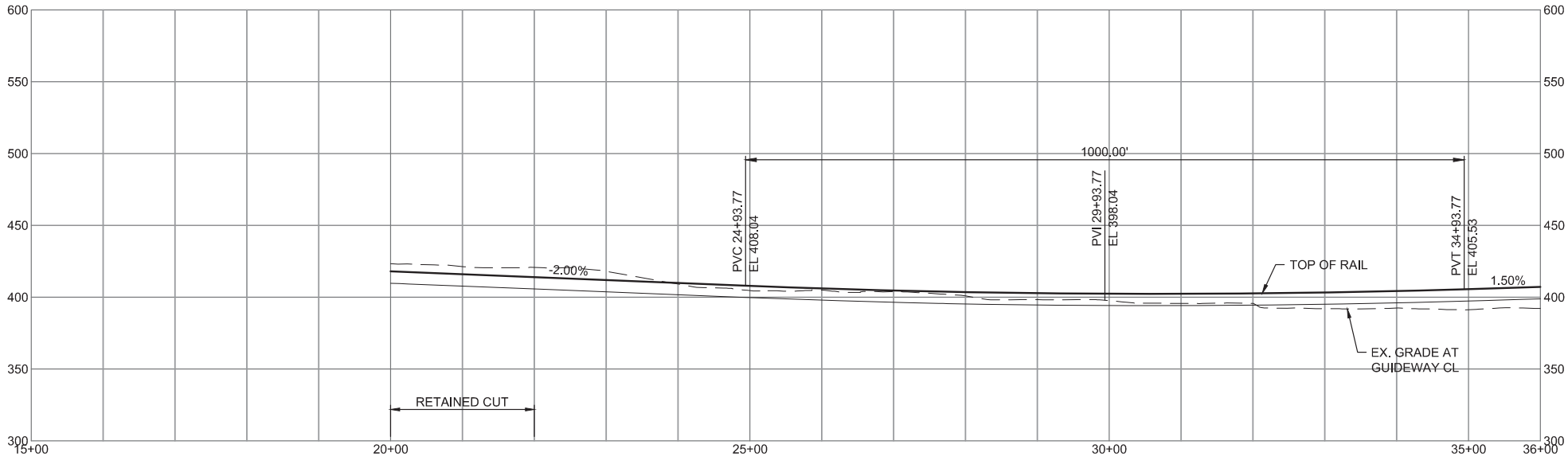
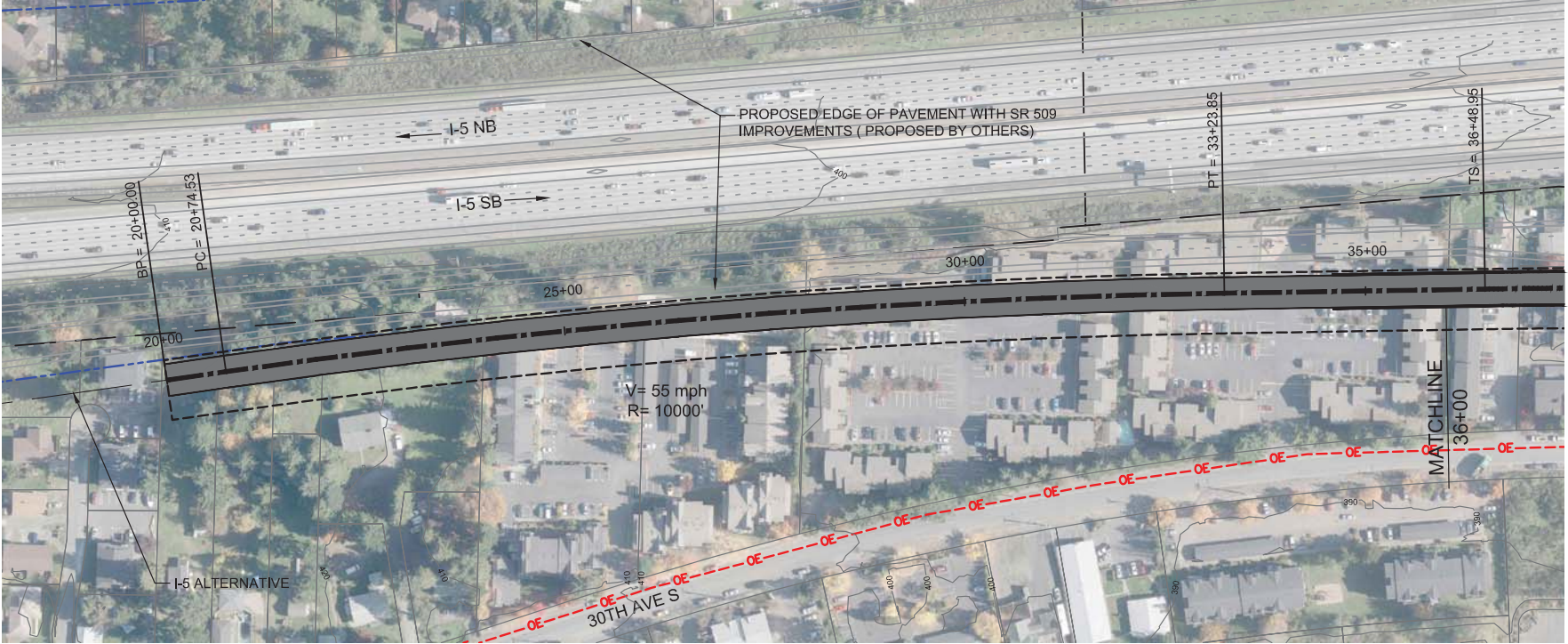


FINAL EIS - CONCEPTUAL DESIGN  
SHEET INDEX KEY MAP  
I-5 TO SR 99 ALTERNATIVE

AUGUST 2016  
I5-P00-GX02  
163



# SOUND TRANSIT FEDERAL WAY LINK EXTENSION



10/3/2016 3:04:24 PM  
C:\P\WORKING\SEA\1078842\FWLE I-5 TO SR99.DWG



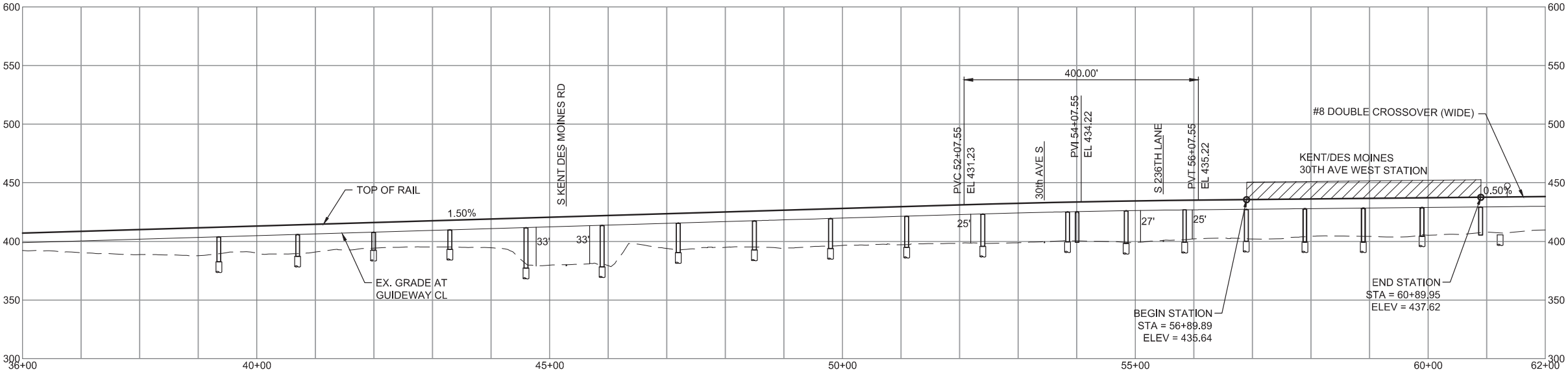
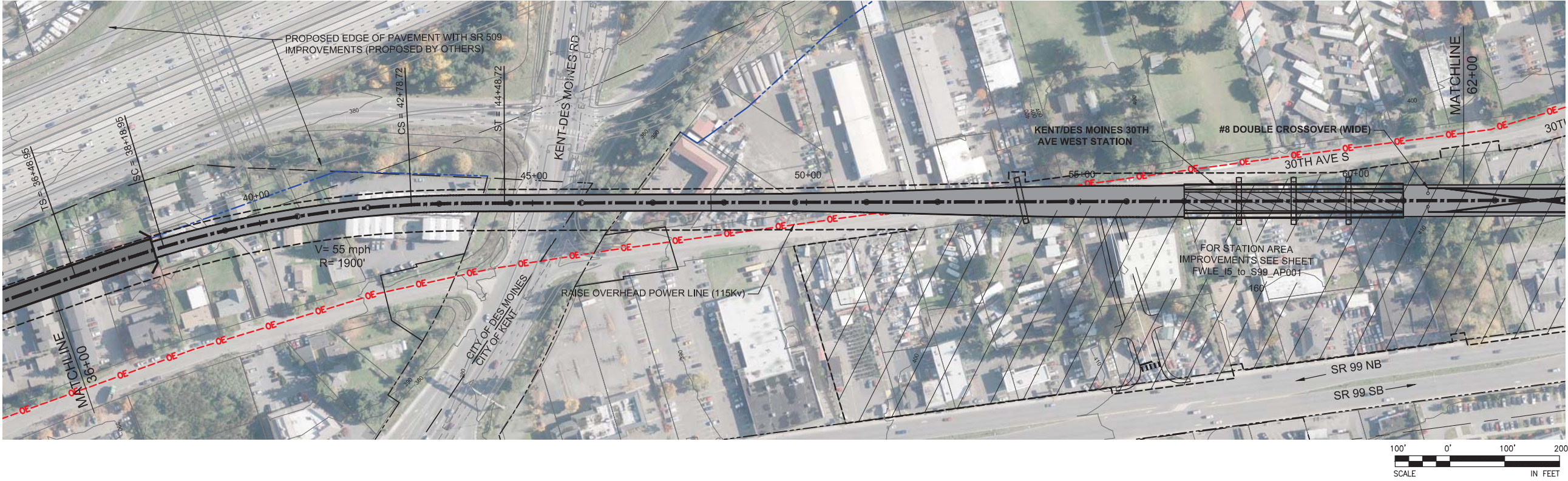
FINAL EIS - CONCEPTUAL DESIGN  
TRACK PLAN AND PROFILE AND ROADWAY RECONSTRUCTION  
I-5 TO SR 99 ALTERNATIVE  
STA 20+00 TO STA 36+00

AUGUST 2016

I5-P1-PP01  
164



SOUND TRANSIT FEDERAL WAY LINK EXTENSION



10/5/2016 9:21:46 AM  
C:\P\WORKING\SEA\107842P\_FWLE\_I-5\_TO\_SR99.DWG

FOXC



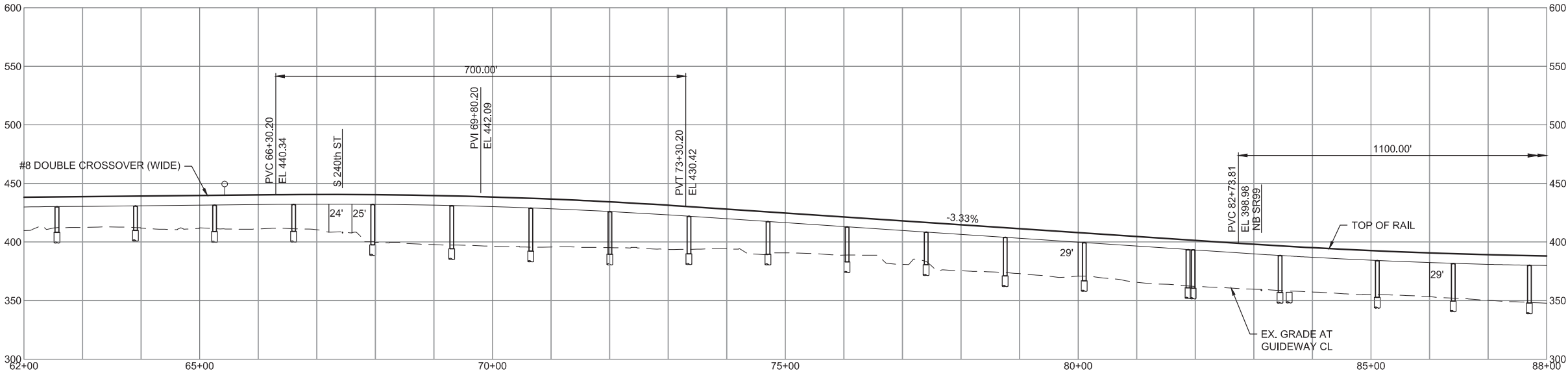
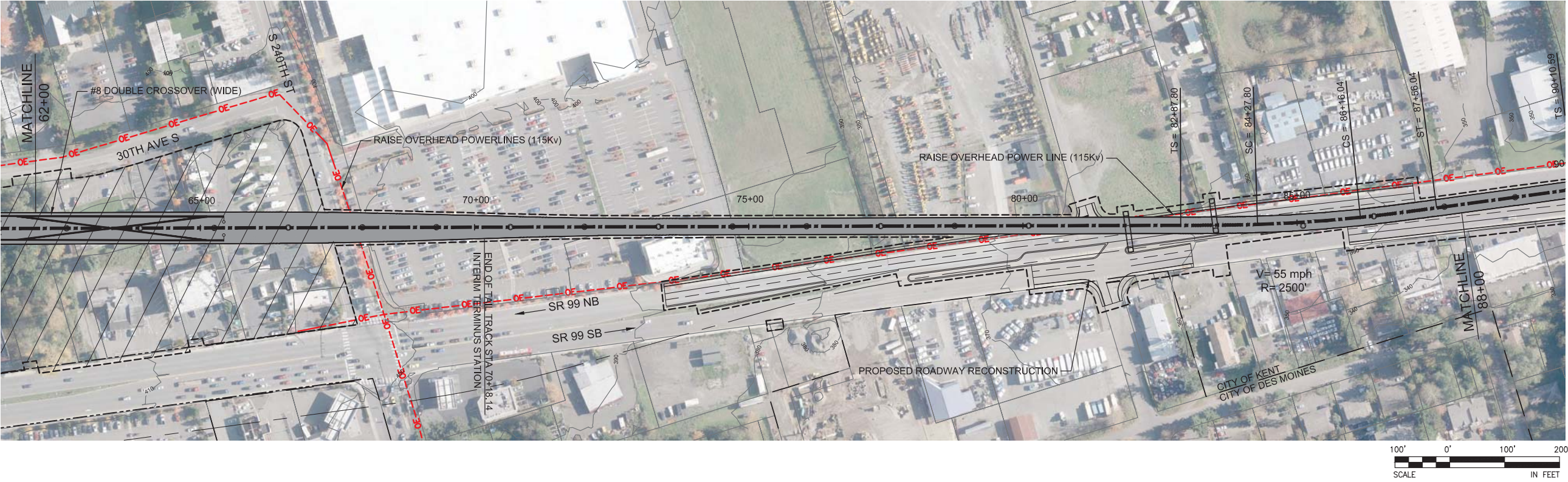
FINAL EIS - CONCEPTUAL DESIGN  
TRACK PLAN AND PROFILE AND ROADWAY RECONSTRUCTION  
I-5 TO SR 99 ALTERNATIVE  
STA 36+00 TO STA 62+00

AUGUST 2016

I5-P2-PP02  
165



SOUND TRANSIT FEDERAL WAY LINK EXTENSION



10/3/2016 3:05:15 PM  
C:\P\WORKING\SEA\1078842P\_FWLE-I-5 TO SR99.DWG

FOXC



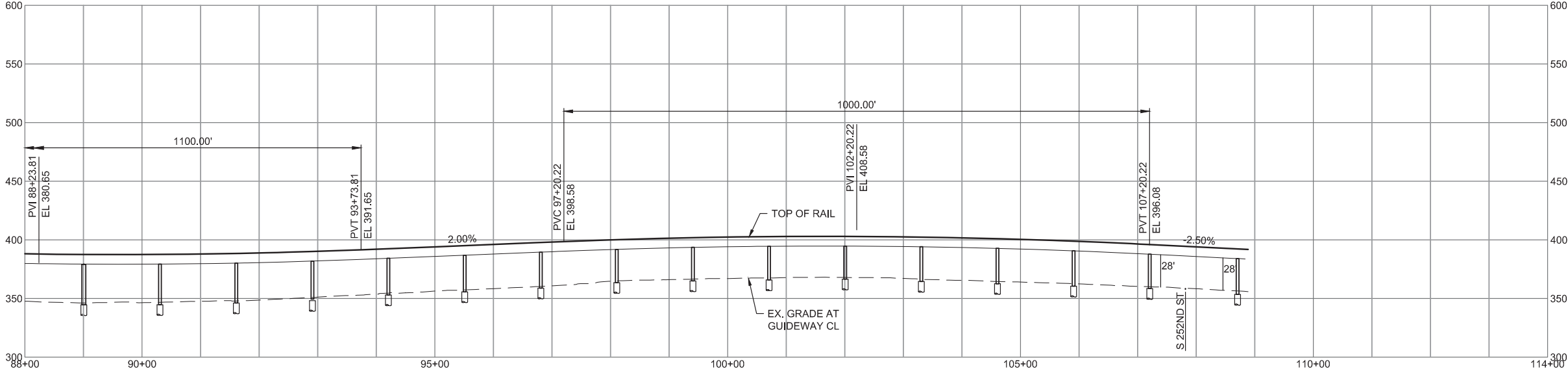
FINAL EIS - CONCEPTUAL DESIGN  
TRACK PLAN AND PROFILE AND ROADWAY RECONSTRUCTION  
I-5 TO SR 99 ALTERNATIVE  
STA 62+00 TO STA 88+00

AUGUST 2016

I5-P3-PP03  
166



# SOUND TRANSIT FEDERAL WAY LINK EXTENSION



10/3/2016 3:05:38 PM  
C:\P\WORKING\SEA\107842\FWLE-I-5 TO SR99.DWG  
FOXC

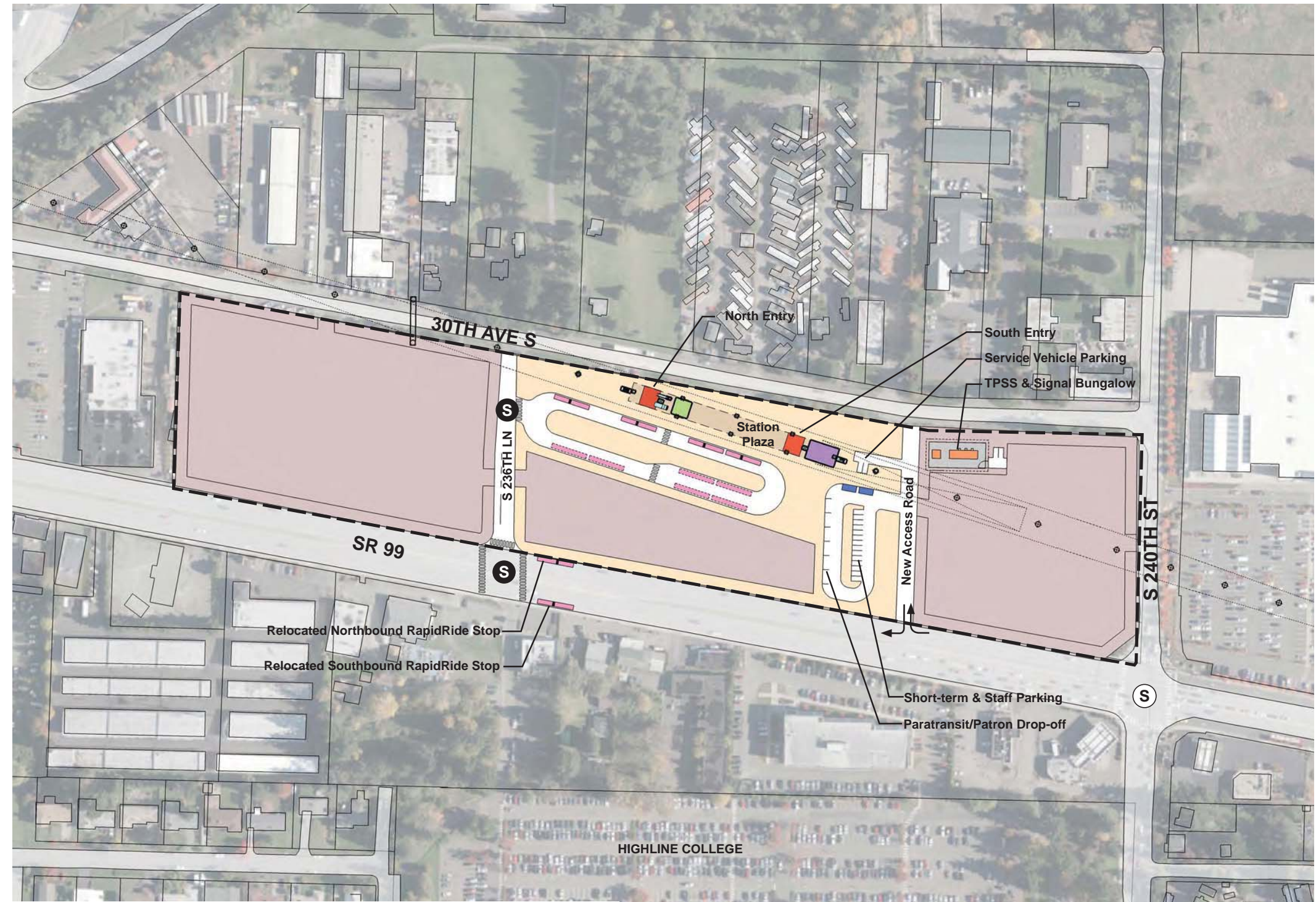


FINAL EIS - CONCEPTUAL DESIGN  
TRACK PLAN AND PROFILE AND ROADWAY RECONSTRUCTION  
I-5 TO SR 99 ALTERNATIVE  
STA 88+00 TO STA 108+83.60

AUGUST 2016  
I5-P4-PP04  
167



SOUND TRANSIT FEDERAL WAY LINK EXTENSION



- STATION PLAZA
- VERTICAL CIRCULATION
- TICKETING / ENTRY HALL
- PLATFORM
- ANCILLARY SPACES
- TPSS
- BUS LAYOVER
- BUS PICK-UP / DROP OFF
- PARATRANSIT
- BICYCLE STORAGE
- CONSTRUCTION STAGING / PARKING

- STATION AREA FOOTPRINT
- S

SIGNALIZED INTERSECTION (EXISTING)
- S

SIGNALIZED INTERSECTION (PROPOSED)



FINAL EIS - CONCEPTUAL DESIGN

KENT/DES MOINES 30TH AVENUE WEST STATION

SITE PLAN

7/17/2014 11:08:52 AM JHAMMERQUIST G:\BHM\PROJECTS\67612\FEDERAL WAY TRANSIT EXTENSION\2 CLIENTS DATA\INCOMING HDR\40717 UPDATED TITLEBLOCKS.TITLEBLOCK.DWG

ASSUMPTIONS:

Kent/Des Moines 30th Avenue West Station	
Alternative(s)	I-5 to SR 99
Boardings	2,500
Boardings (interim terminus)	4,500
Station Configuration	
Terminus / In-Line	Interim Terminus
Station Type	Center Platform - Elevated
Platform Width	34'
Tail track	900'
Crossover	Yes
TPSS	Yes
Program	
KC Metro Ancillary Spaces (SF)	200
ST Ancillary Spaces (SF)	1,800
Total Ancillary Spaces (SF)	2,000
Vertical Circulation	
# of entrances	2
# of escalators	2
# of staircases (patron)	2
# of elevators	2
# of emergency stairs	2
Bus/Paratransit Facilities	
Bus bays (KCM)	2 bays, one 60' coach each
Bus bays (ST)	1 bay, two 60' coaches
Rapid Ride	On-street at SR 99
Bus layover (KCM)	2 bays, two 60' coaches each
Bus layover (ST)	1 bay, two 60' coaches
Paratransit spaces	1 permanent, 1 interim
Communications Facility	Tier 2
Parking & Amenities	
Bike storage	900 SF
Patron drop-off	6 spaces
Short-term patron parking	7 to 10 spaces
Staff parking	4 spaces
Service/emerg. vehicle park.	2 spaces, separate lot
Signal bungalow / TPSS park.	2 spaces, dedicated
Long-term patron parking	500 spaces (structure)
Temporary patron parking*	500 spaces (surface)
Total proposed patron parking*	1000 Spaces

\*Only required for interim terminus condition

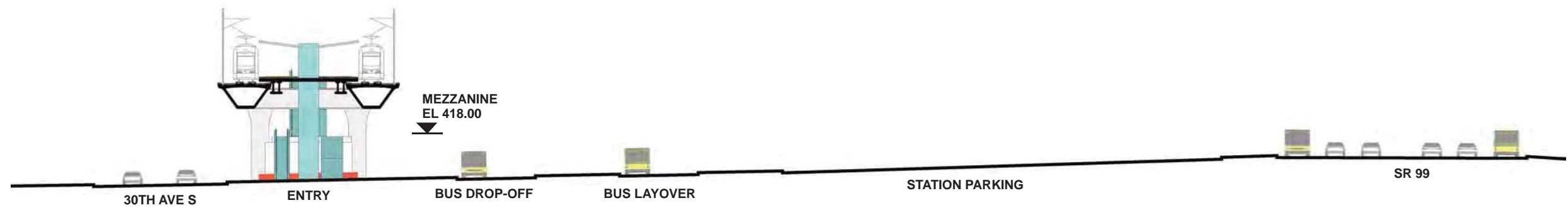


AUGUST 2016

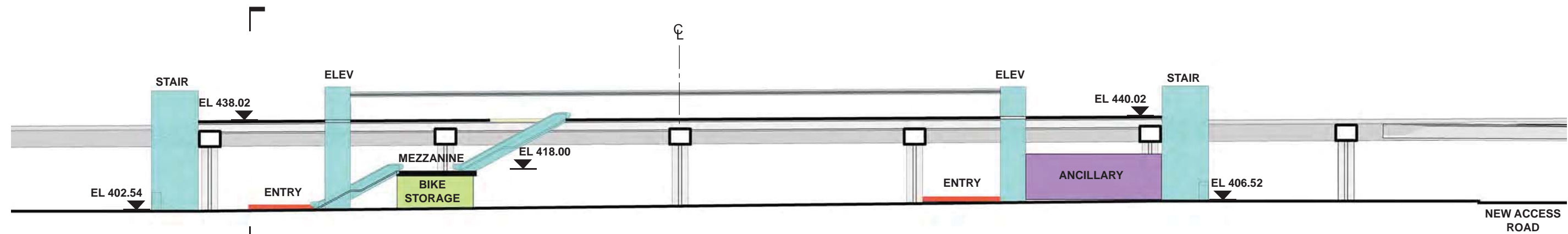
FWLE\_I5\_to\_S99\_AP001  
168



SOUND TRANSIT FEDERAL WAY LINK EXTENSION

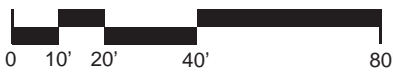


SECTION LOOKING SOUTH



SECTION LOOKING EAST

- |                        |                                |
|------------------------|--------------------------------|
| STATION PLAZA          | BUS LAYOVER                    |
| VERTICAL CIRCULATION   | BUS PICK-UP / DROP OFF         |
| TICKETING / ENTRY HALL | PARATRANSIT                    |
| PLATFORM               | BICYCLE STORAGE                |
| ANCILLARY SPACES       | CONSTRUCTION STAGING / PARKING |
| TPSS                   |                                |



FINAL EIS - CONCEPTUAL DESIGN  
KENT/DES MOINES 30TH AVENUE WEST STATION  
SECTIONS

AUGUST 2016  
FWLE\_I5\_to\_S99\_AX001  
169

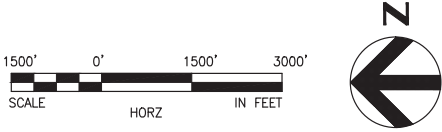
7/17/2014 11:58:52 AM  
JHAMMERQUIST  
G:\BHM\PROJECTS\67612 FEDERAL WAY TRANSIT EXTENSION\2 CLIENT\2 DATA\INCOMING HDR\40717 UPDATED TITLEBLOCKS.TITLEBLOCK.DWG



# SOUND TRANSIT FEDERAL WAY LINK EXTENSION



I-5 TO SR99 SHEET LAYOUT MATRIX				
	1	2	3	4
P - I-5 TO SR 99 ALTERNATIVE	X	X	X	X
R - I-5 TO SR 99 260TH WEST STATION OPTION (POTENTIAL ADDITIONAL STATION)			X	X



10/3/2016 3:09:21 PM  
C:\P\WORKING\SEA\10788401\EA\00-GX02.DWG

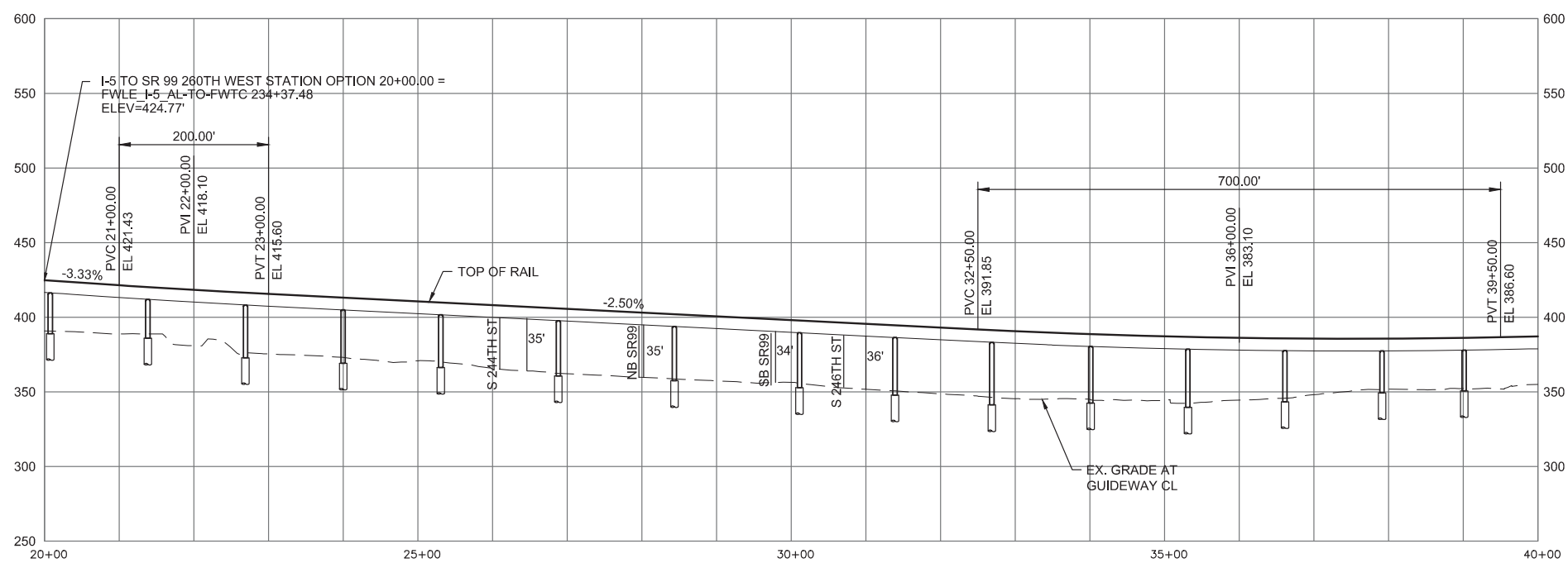
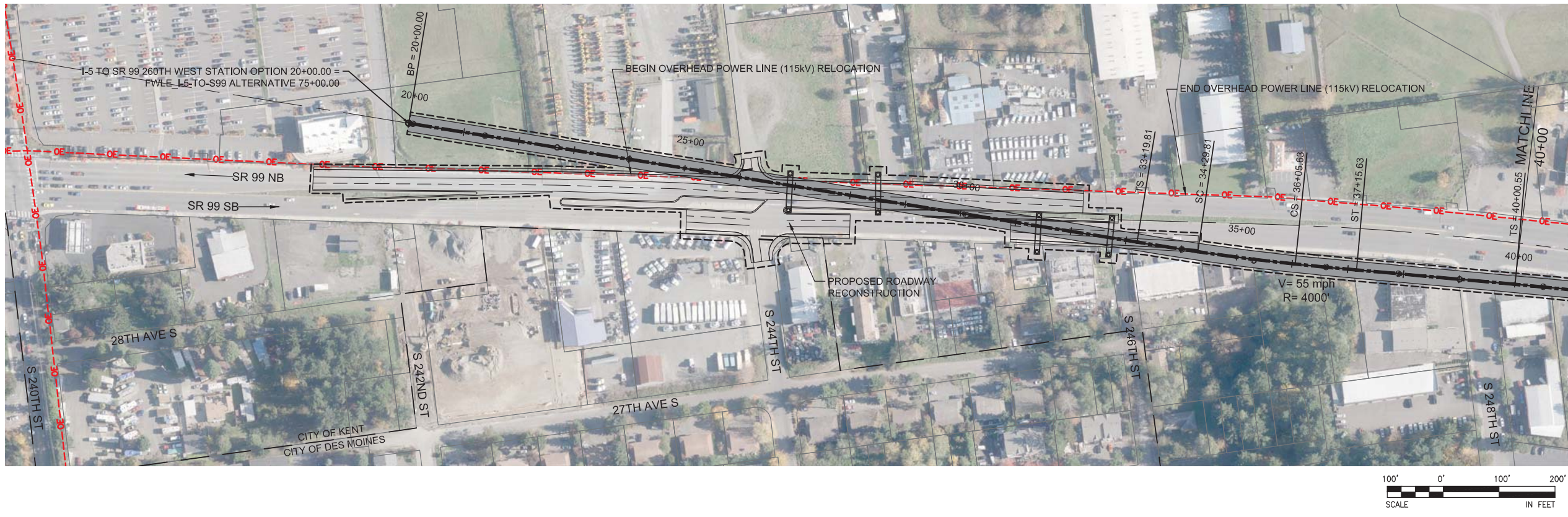


FINAL EIS - CONCEPTUAL DESIGN  
SHEET INDEX KEY MAP  
I-5 TO SR 99 206TH WEST STATION OPTION (POTENTIAL ADDITIONAL STATION)

AUGUST 2016  
I5-R00-GX02  
170



SOUND TRANSIT FEDERAL WAY LINK EXTENSION



10/3/2016 3:24:05 PM  
C:\P\WORKING\SEA\107842\I-5 TO S260TH WEST STATION.DWG



FINAL EIS - CONCEPTUAL DESIGN

TRACK PLAN AND PROFILE & ROADWAY RECONSTRUCTION

I-5 TO SR 99 260TH WEST STATION OPTION (POTENTIAL ADDITIONAL STATION)

STA 20+00 TO STA 40+00

AUGUST 2016

I5-R01-PP01  
171



# SOUND TRANSIT FEDERAL WAY LINK EXTENSION

