

*Appendix A*  
*Noise Monitoring Details*

---





Photo 1: Aerial View



Photo 2: Looking southeast from SR 99



Photo 3: Looking southwest



Photo 4: Looking at the intersection of SR 99 and S 204th Street

Monitoring Location M-1  
20406 Pacific Hwy. S (Sleep Inn)  
SeaTac, Washington



Michael Minor & Associates  
Sound.Vibration.Air  
Portland, Oregon

Figure 1  
Noise Monitoring Locations  
Federal Way Extension



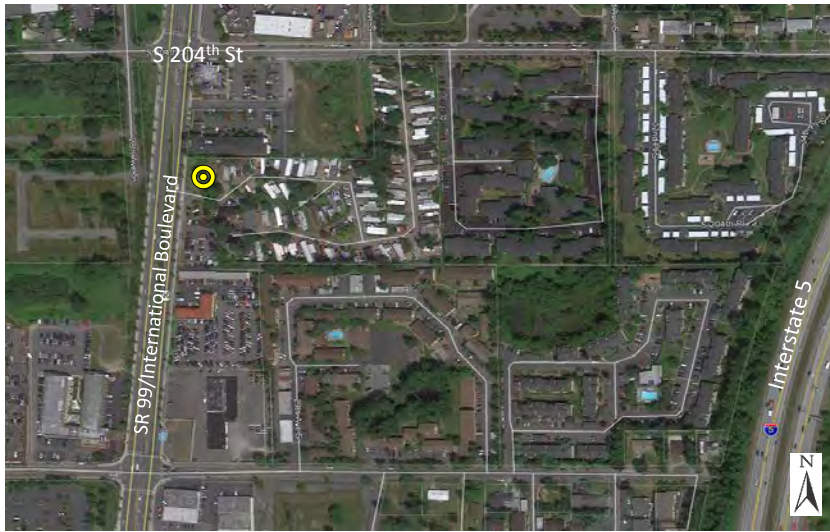


Photo 1: Aerial View



Photo 2: Looking northwest at SR 99



Photo 3: Looking southeast



Photo 4: Looking northeast from the park entrance

Monitoring Location M-2  
20440 Int'l Blvd. (The Firs Mobile Home Park)  
SeaTac, Washington



Michael Minor & Associates  
Sound.Vibration.Air  
Portland, Oregon

Figure 2  
Noise Monitoring Locations  
Federal Way Extension





Photo 1: Aerial View



Photo 2: Looking northwest across S 208th St



Photo 3: Looking east down S 208th Street towards I-5



Photo 4: Looking west down S 208th Street towards SR 99

Monitoring Location M-3  
3002 S 208th Street (Willow Lake Apts.)  
SeaTac, Washington



Michael Minor & Associates  
Sound.Vibration.Air  
Portland, Oregon

Figure 3  
Noise Monitoring Locations  
Federal Way Extension





Photo 1: Aerial View



Photo 2: Looking east towards I-5 at end of S 211<sup>th</sup> Street



Photo 3: Looking south across S 211<sup>th</sup> Street



Photo 4: Looking west down S 211<sup>th</sup> Street

Monitoring Location M-4  
WSDOT ROW near 3120 S 211th Street  
SeaTac, Washington



Michael Minor & Associates  
Sound.Vibration.Air  
Portland, Oregon

Figure 4  
Noise Monitoring Locations  
Federal Way Extension





Photo 1: Aerial View



Photo 2: Looking north towards along right of way fence line



Photo 3: Looking east towards I-5



Photo 4: Looking south from down 32<sup>nd</sup> Avenue S

Monitoring Location M-5  
WSDOT ROW near 21211 32nd Avenue S  
SeaTac, Washington



Michael Minor & Associates  
Sound.Vibration.Air  
Portland, Oregon

Figure 5  
Noise Monitoring Locations  
Federal Way Extension





Photo 1: Aerial View



Photo 2: Looking west across 31<sup>st</sup> Avenue S



Photo 3: Looking north



Photo 4: Looking southwest

Monitoring Location M-6  
21815 31st Avenue S  
Des Moines, Washington



Michael Minor & Associates  
Sound.Vibration.Air  
Portland, Oregon

Figure 6  
Noise Monitoring Locations  
Federal Way Extension



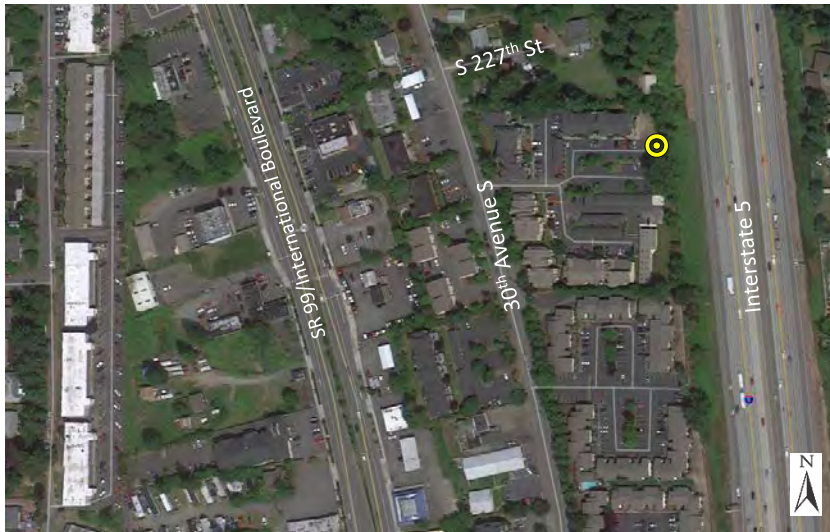


Photo 1: Aerial View

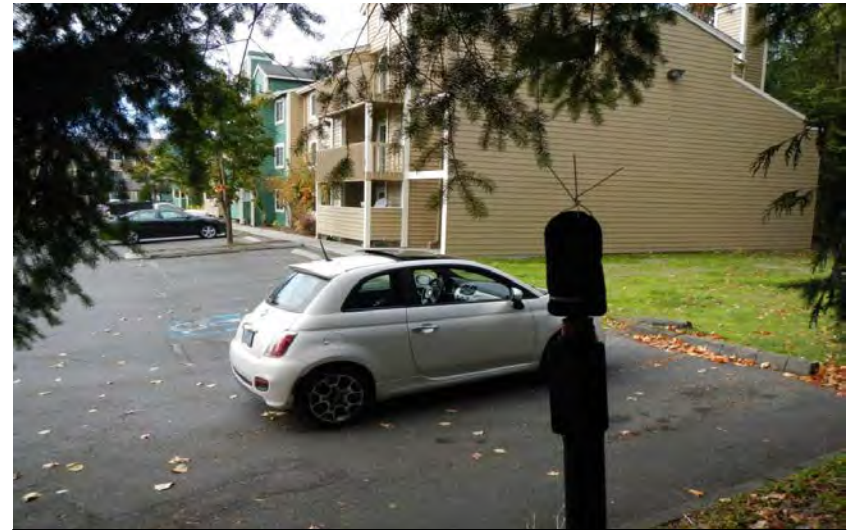


Photo 2: Looking northwest



Photo 3: Looking west



Photo 4: Looking southeast towards I-5

Monitoring Location M-7 Back  
22700 30th Avenue S (Newport Village Condominiums)  
Des Moines, Washington



Michael Minor & Associates  
Sound.Vibration.Air  
Portland, Oregon

Figure 7  
Noise Monitoring Locations  
Federal Way Extension





Photo 1: Aerial View



Photo 2: Looking northeast



Photo 3: Looking southeast



Photo 4: Looking northwest towards 30<sup>th</sup> Avenue S

Monitoring Location M-7 Front  
22700 30th Avenue S (Newport Village Condominiums)  
Des Moines, Washington



Michael Minor & Associates  
Sound.Vibration.Air  
Portland, Oregon

Figure 8  
Noise Monitoring Locations  
Federal Way Extension





Photo 1: Aerial View



Photo 2: Looking northwest



Photo 3: Looking southwest



Photo 4: Looking northeast

Monitoring Location M-8  
23215 30th Avenue S  
Des Moines, Washington



Michael Minor & Associates  
Sound.Vibration.Air  
Portland, Oregon

Figure 9  
Noise Monitoring Locations  
Federal Way Extension



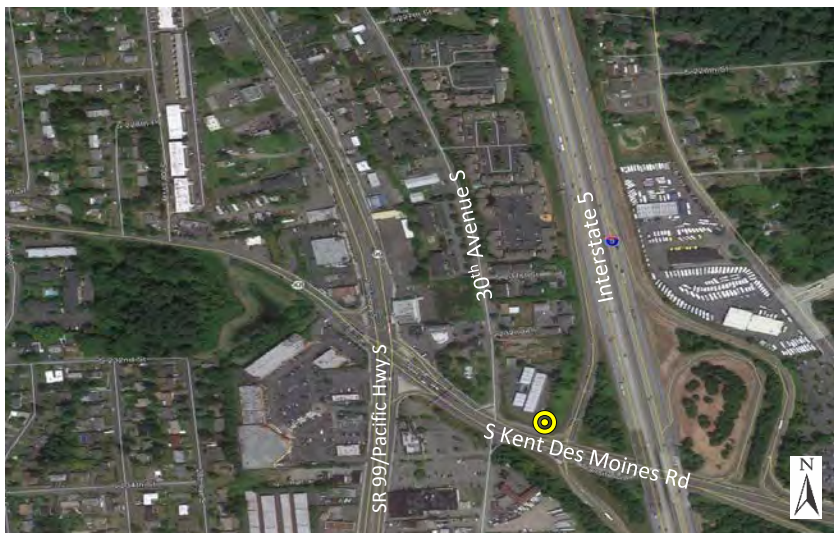


Photo 1: Aerial View



Photo 2: Looking west



Photo 3: Looking northwest



Photo 4: Looking southeast towards I-5

Monitoring Location M-9  
WSDOT ROW near King's Arms Motel  
Des Moines, Washington



Michael Minor & Associates  
Sound.Vibration.Air  
Portland, Oregon

Figure 10  
Noise Monitoring Locations  
Federal Way Extension





Photo 1: Aerial View



Photo 2: Looking southwest at 30<sup>th</sup> Avenue S



Photo 3: Looking northwest at 30<sup>th</sup> Avenue S



Photo 4: Looking east church and I-5

Monitoring Location M-10  
23634 30th Avenue S (Park of the Pines - Homes)  
Kent, Washington



Michael Minor & Associates  
Sound.Vibration.Air  
Portland, Oregon

Figure 11  
Noise Monitoring Locations  
Federal Way Extension





Photo 1: Aerial View



Photo 2: Looking northeast at the church



Photo 3: Looking southeast at I-5



Photo 4: Looking west towards 30th Avenue S

Monitoring Location M-10A  
23634 30th Avenue S (Park of the Pines - Church)  
Kent, Washington



Michael Minor & Associates  
Sound.Vibration.Air  
Portland, Oregon

Figure 12  
Noise Monitoring Locations  
Federal Way Extension





Photo 1: Aerial View



Photo 2: Looking west at 30<sup>th</sup> Ave S



Photo 3: Looking north



Photo 4: Looking southeast

Monitoring Location M-11  
23828 30th Avenue S  
Kent, Washington



Michael Minor & Associates  
Sound.Vibration.Air  
Portland, Oregon

Figure 13  
Noise Monitoring Locations  
Federal Way Extension





Photo 1: Aerial View



Photo 2: Looking north toward I-5



Photo 3: Looking east



Photo 4: Looking Northeast toward I-5

Monitoring Location M-12  
3320 S 248<sup>th</sup> Place  
Kent, Washington



Michael Minor & Associates  
Sound.Vibration.Air  
Portland, Oregon

Figure 14  
Noise Monitoring Locations  
Federal Way Extension



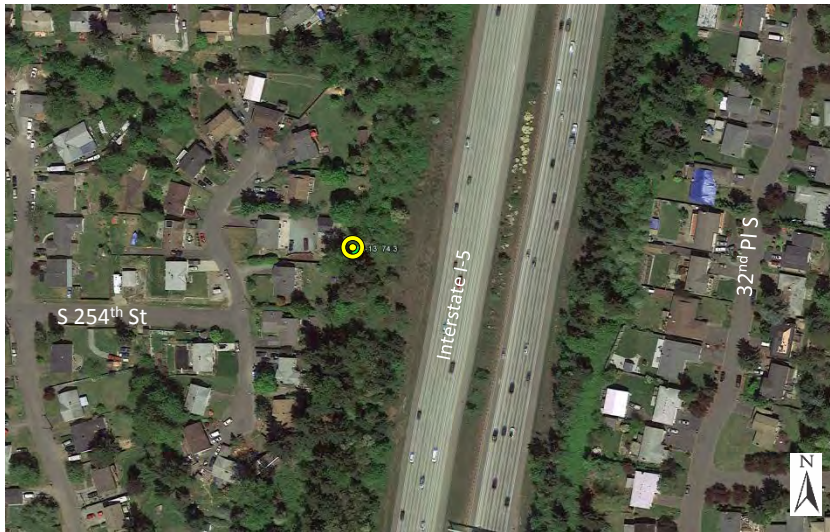


Photo 1: Aerial View



Photo 2: Looking east toward I-5



Photo 3: Looking northwest



Photo 4: Looking southwest

Monitoring Location M-13  
25338 31st Avenue S  
Kent, Washington



Michael Minor & Associates  
Sound.Vibration.Air  
Portland, Oregon

Figure 15  
Noise Monitoring Locations  
Federal Way Extension





Photo 1: Aerial View



Photo 2: Looking northwest



Photo 3: Looking southwest toward S 268<sup>th</sup> Pl.



Photo 4: Looking south down 28<sup>th</sup> Ave S

Monitoring Location M-15  
2728 S 268<sup>th</sup> Place  
Kent, Washington



Michael Minor & Associates  
Sound.Vibration.Air  
Portland, Oregon

Figure 16  
Noise Monitoring Locations  
Federal Way Extension





Photo 1: Aerial View



Photo 2: Looking north toward S 272<sup>nd</sup>



Photo 3: Looking south toward Mark Twain Elementary



Photo 4: Looking northeast toward I-5

Monitoring Location M-16  
2450 S Star Lake Rd. (Mark Twain Elementary School)  
Federal Way, Washington



Michael Minor & Associates  
Sound.Vibration.Air  
Portland, Oregon

Figure 17  
Noise Monitoring Locations  
Federal Way Extension



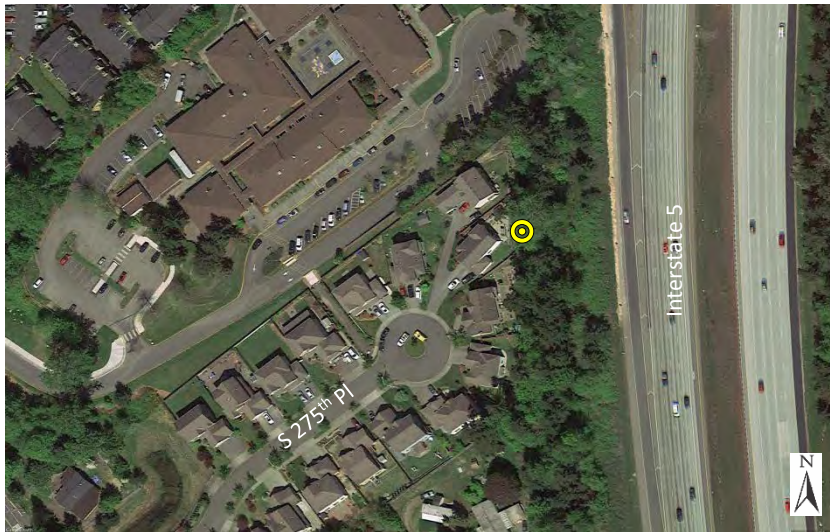


Photo 1: Aerial View



Photo 2: Looking south



Photo 3: Looking north



Photo 4: Looking east toward I-5

Monitoring Location M-17  
2720 S 275<sup>th</sup> Place  
Federal Way, Washington



Michael Minor & Associates  
Sound.Vibration.Air  
Portland, Oregon

Figure 18  
Noise Monitoring Locations  
Federal Way Extension





Photo 1: Aerial View



Photo 2: Looking north



Photo 3: Looking southwest toward 29<sup>th</sup> Ave S



Photo 4: Looking east toward I-5

Monitoring Location M-19  
28118 29<sup>th</sup> Avenue  
Federal Way, Washington



Michael Minor & Associates  
Sound.Vibration.Air  
Portland, Oregon

Figure 19  
Noise Monitoring Locations  
Federal Way Extension





Photo 1: Aerial View



Photo 2: Looking southeast toward I-5



Photo 3: Looking northeast



Photo 4: Looking southwest

Monitoring Location M-22  
2920 S 288th Street (Kumran Methodist Church)  
Federal Way, Washington



Michael Minor & Associates  
Sound.Vibration.Air  
Portland, Oregon

Figure 20  
Noise Monitoring Locations  
Federal Way Extension





Photo 1: Aerial View

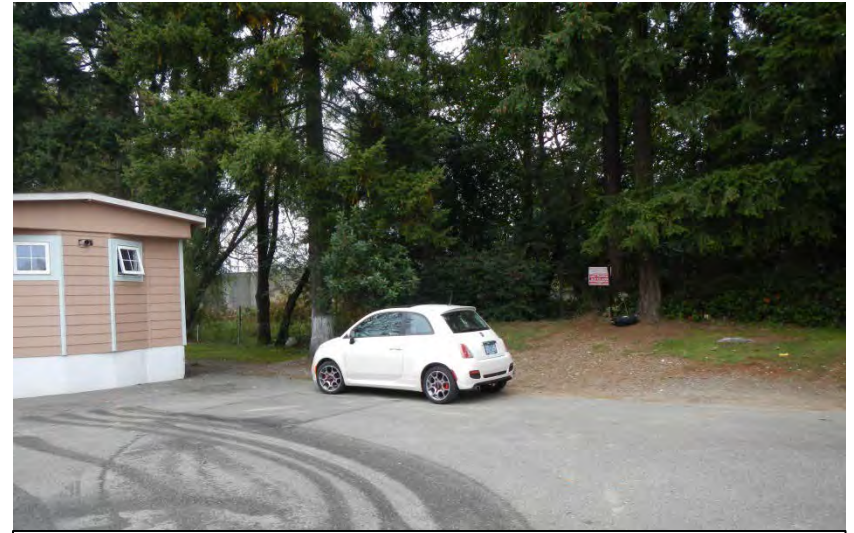


Photo 2: Looking east toward I-5



Photo 3: Looking southwest down Sir Galahad Ct.



Photo 4: Looking west

Monitoring Location M-23 North  
3001 S 288th Street (End of Sir Galahad Ct. in Camelot  
Square Mobile Home Park)  
Federal Way, Washington



Michael Minor & Associates  
Sound.Vibration.Air  
Portland, Oregon

Figure 21  
Noise Monitoring Locations  
Federal Way Extension



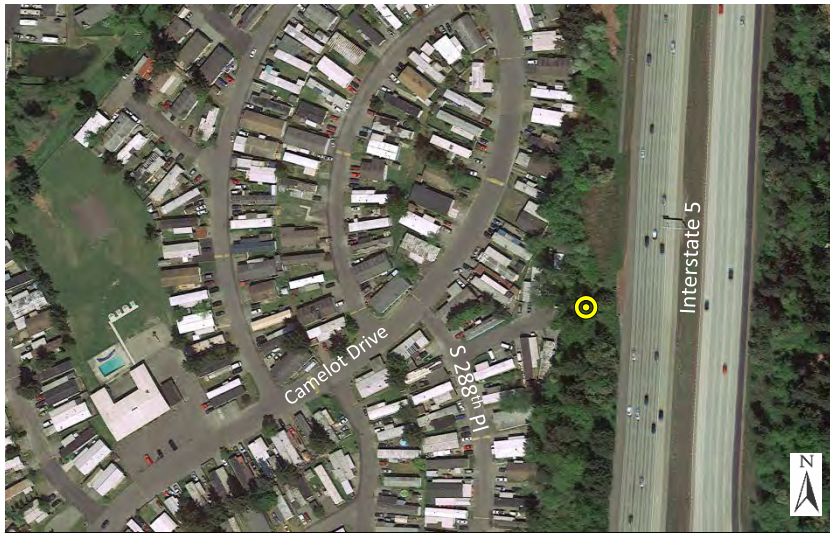


Photo 1: Aerial View



Photo 2: Looking northeast toward I-5



Photo 3: Looking south



Photo 4: Looking southwest down 288th Street

Monitoring Location M-23 South  
3001 S 288th Street (223 Canterbury Drive in Camelot  
Square Mobile Home Park)  
Federal Way, Washington



Michael Minor & Associates  
Sound.Vibration.Air  
Portland, Oregon

Figure 22  
Noise Monitoring Locations  
Federal Way Extension





Photo 1: Aerial View



Photo 2: Looking southwest



Photo 3: Looking east toward I-5



Photo 4: Looking north

Monitoring Location M-25  
30012 Military Road (Church of Christ at Federal Way)  
Federal Way, Washington



Michael Minor & Associates  
Sound.Vibration.Air  
Portland, Oregon

Figure 23  
Noise Monitoring Locations  
Federal Way Extension





Photo 1: Aerial View



Photo 2: Looking east toward I-5



Photo 3: Looking west toward 2833 S 308th Ln



Photo 4: Looking southeast toward I-5

Monitoring Location M-27  
2833 S 308th Lane (Studio)  
Federal Way, Washington



Michael Minor & Associates  
Sound.Vibration.Air  
Portland, Oregon

Figure 24  
Noise Monitoring Locations  
Federal Way Extension