

Photo 1: Aerial View



Photo 2: Looking east toward I-5



Photo 3: Looking west toward 2833 S 308th Ln



Photo 4: Looking north

Monitoring Location M-27A
2833 S 308th Lane (Home)
Federal Way, Washington



Michael Minor & Associates
Sound.Vibration.Air
Portland, Oregon

Figure 25
Noise Monitoring Locations
Federal Way Extension



Photo 1: Aerial View



Photo 2: Looking northwest toward Providence Landing Apts.



Photo 3: Looking southeast toward I-5



Photo 4: Looking northeast

Monitoring Location M-28
31220 28th Avenue S (Providence Landing Apts.)
Federal Way, Washington



Michael Minor & Associates
Sound.Vibration.Air
Portland, Oregon

Figure 26
Noise Monitoring Locations
Federal Way Extension



Photo 1: Aerial View



Photo 2: Looking east toward I-5



Photo 3: Looking west toward 28th Ave S



Photo 4: Looking southeast

Monitoring Location M-29
31524 28th Avenue S
Federal Way, Washington



Michael Minor & Associates
Sound.Vibration.Air
Portland, Oregon

Figure 27
Noise Monitoring Locations
Federal Way Extension



Photo 1: Aerial View



Photo 2: Looking northwest toward Truman High School



Photo 3: Looking west toward I-5



Photo 4: Looking south toward the Hampton Inn

Monitoring Location M-30
31453 28th Avenue S (Truman H.S.)
Federal Way, Washington



Michael Minor & Associates
Sound.Vibration.Air
Portland, Oregon

Figure 28
Noise Monitoring Locations
Federal Way Extension



Photo 1: Aerial View



Photo 2: Looking southwest toward Pacific Highway



Photo 3: Looking southeast toward Viewpoint Apts.



Photo 4: Looking northwest toward Pacific Highway

Monitoring Location M-31
21428 Pacific Hwy. S (Viewpoint Apts.)
Seatac, Washington



Michael Minor & Associates
Sound.Vibration.Air
Portland, Oregon

Figure 29
Noise Monitoring Locations
Federal Way Extension



Photo 1: Aerial View



Photo 2: Looking southwest toward Pacific Highway



Photo 3: Looking north



Photo 4: Looking west toward Pine Terrace Mfg. Home Park

Monitoring Location M-32
21814 Pacific Hwy. S (Pine Terrace Mobile Home Park)
Des Moines, Washington



Michael Minor & Associates
Sound.Vibration.Air
Portland, Oregon

Figure 30
Noise Monitoring Locations
Federal Way Extension



Photo 1: Aerial View

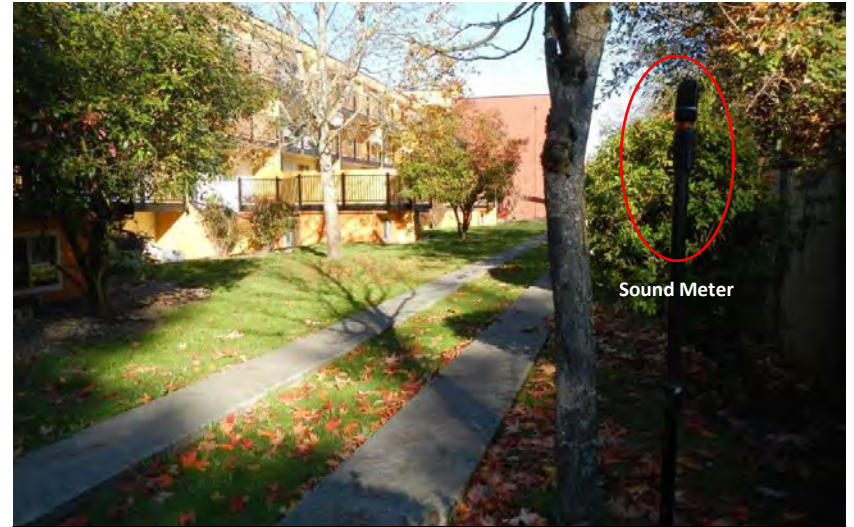


Photo 2: Looking north

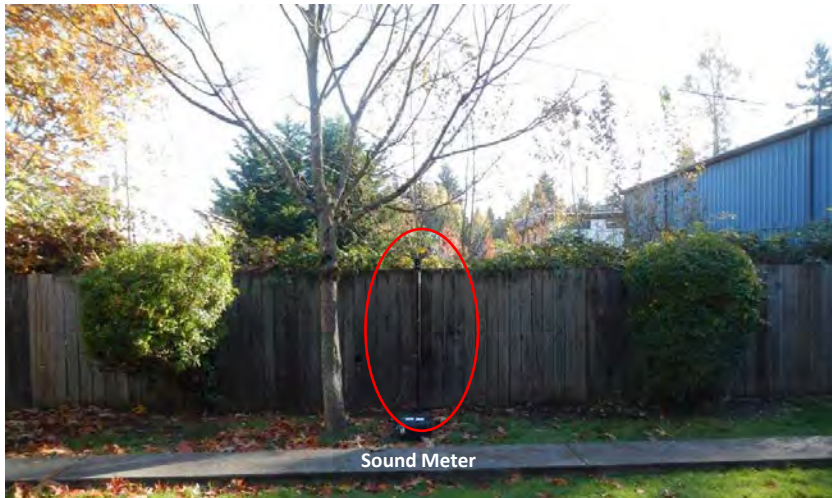


Photo 3: Looking east



Photo 4: Looking west at the Majestic Bay Apartments

Monitoring Location M-33
 2459 Pacific Hwy. S (Majestic Bay Apts.)
 Des Moines, Washington



Michael Minor & Associates
 Sound.Vibration.Air
 Portland, Oregon

Figure 31
 Noise Monitoring Locations
 Federal Way Extension



Photo 1: Aerial View



Photo 2: Looking southwest



Photo 3: Looking north



Photo 4: Looking southeast

Monitoring Location M-34
2616 S 224th Street (Sea Fox Apts.)
Des Moines, Washington



Michael Minor & Associates
Sound.Vibration.Air
Portland, Oregon

Figure 32
Noise Monitoring Locations
Federal Way Extension



Photo 1: Aerial View



Photo 2: Looking south



Photo 3: Looking toward the corner of Pacific Hwy S and S 224th Street



Photo 4: Looking northeast

Monitoring Location M-35
22323 Pacific Hwy. S (Citadel Church)
Des Moines, Washington



Michael Minor & Associates
Sound.Vibration.Air
Portland, Oregon

Figure 33
Noise Monitoring Locations
Federal Way Extension



Photo 1: Aerial View



Photo 2: Looking northwest at 30th Avenue S



Photo 3: Looking south at 30th Avenue S



Photo 4: Looking southeast

Monitoring Location M-36
22516 30th Avenue S
Des Moines, Washington



Michael Minor & Associates
Sound.Vibration.Air
Portland, Oregon

Figure 34
Noise Monitoring Locations
Federal Way Extension



Photo 1: Aerial View



Photo 2: Looking southeast



Photo 3: Looking west

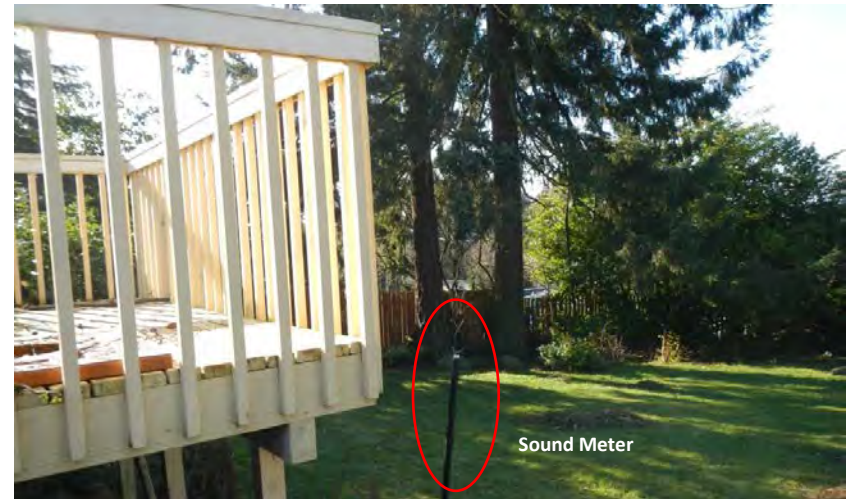


Photo 4: Looking southwest

Monitoring Location M-37
22323 30th Avenue S
Des Moines, Washington



Michael Minor & Associates
Sound.Vibration.Air
Portland, Oregon

Figure 35
Noise Monitoring Locations
Federal Way Extension



Photo 1: Aerial View



Photo 2: Looking northwest toward Access Condos



Photo 3: Looking south



Photo 4: Looking east

Monitoring Location M-38
22700 28th Avenue S (Access Condominiums)
Des Moines, Washington



Michael Minor & Associates
Sound.Vibration.Air
Portland, Oregon

Figure 36
Noise Monitoring Locations
Federal Way Extension



Photo 1: Aerial View



Photo 2: Looking east toward Pacific Hwy



Photo 3: Looking north



Photo 4: Looking west

Monitoring Location M-39
22855 Pacific Hwy S
Des Moines, Washington



Michael Minor & Associates
Sound.Vibration.Air
Portland, Oregon

Figure 37
Noise Monitoring Locations
Federal Way Extension



Photo 1: Aerial View

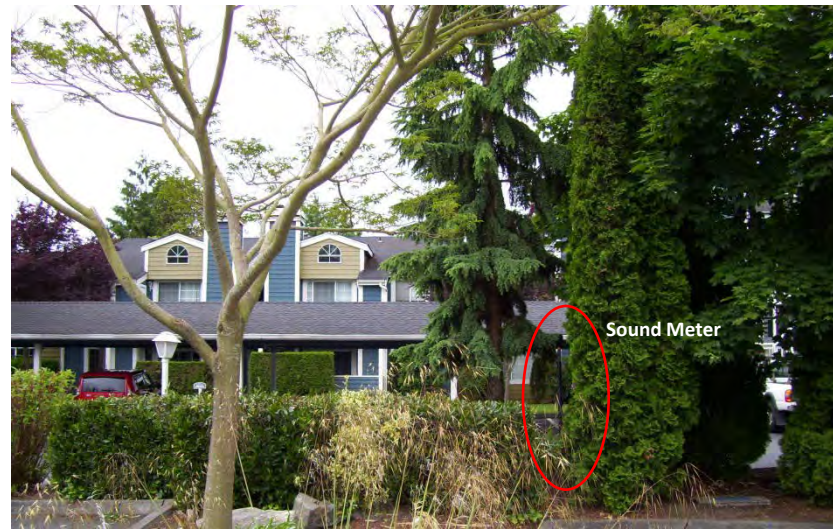


Photo 2: Looking west



Photo 3: Looking southeast



Photo 4: Looking northwest

Monitoring Location M-40 East – Watermark Cove
22831 30th Avenue
Des Moines, Washington



Michael Minor & Associates
Sound.Vibration.Air
Portland, Oregon

Figure 38
Noise Monitoring Locations
Federal Way Extension

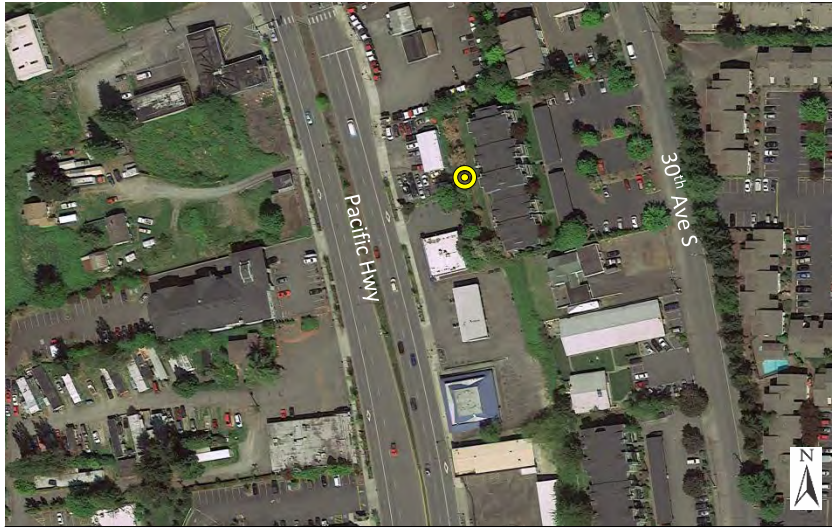


Photo 1: Aerial View



Photo 2: Looking north

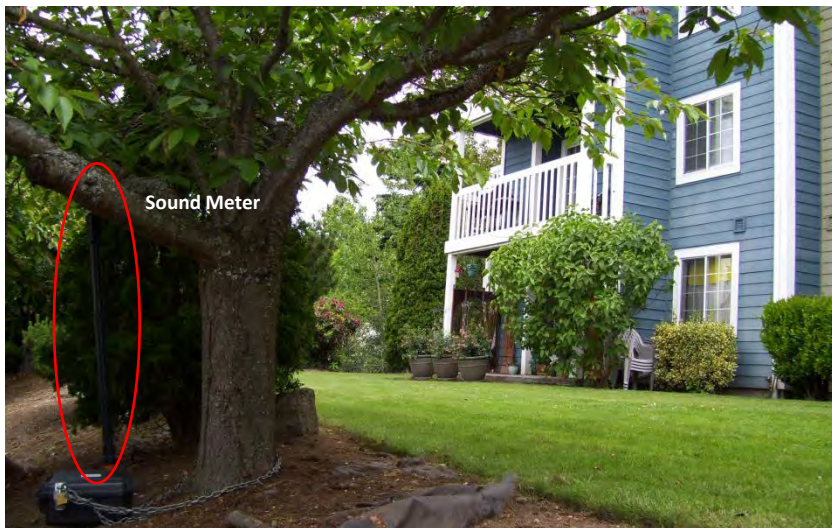


Photo 3: Looking northeast



Photo 4: Looking west at SR 99

Monitoring Location M-40 West – Watermark Cove
22831 30th Avenue
Des Moines, Washington



Michael Minor & Associates
Sound.Vibration.Air
Portland, Oregon

Figure 39
Noise Monitoring Locations
Federal Way Extension



Photo 1: Aerial View



Photo 2: Looking southeast toward S 240th Street



Photo 3: Looking toward the corner of S 240th and Pacific Hwy



Photo 4: Looking north

Monitoring Location M-41
2400 S 240th Street (Highline Community College)
Des Moines, Washington



Michael Minor & Associates
Sound.Vibration.Air
Portland, Oregon

Figure 40
Noise Monitoring Locations
Federal Way Extension



Photo 1: Aerial View



Photo 2: Looking west toward Iolani Apartments



Photo 3: Looking west



Photo 4: Looking east

Monitoring Location M-42
24415 Pacific Hwy. S (Iolani Apartments)
Kent, Washington



Michael Minor & Associates
Sound.Vibration.Air
Portland, Oregon

Figure 41
Noise Monitoring Locations
Federal Way Extension



Photo 1: Aerial View



Photo 2: Looking north



Photo 3: Looking southwest



Photo 4: Looking west

Monitoring Location M-44
2315 S 254th Court
Des Moines, Washington



Michael Minor & Associates
Sound.Vibration.Air
Portland, Oregon

Figure 42
Noise Monitoring Locations
Federal Way Extension



Photo 1: Aerial View



Photo 2: Looking west



Photo 3: Looking north



Photo 4: Looking east

Monitoring Location M-45
2424 S 260th Street (West Hill Mobile Manor)
Kent, Washington



Michael Minor & Associates
Sound.Vibration.Air
Portland, Oregon

Figure 43
Noise Monitoring Locations
Federal Way Extension



Photo 1: Aerial View



Photo 2: Looking east towards SR 99



Photo 3: Looking southwest



Photo 4: Looking northwest at 260th Street

Monitoring Location M-46
2211 S 260th Street
Des Moines, Washington



Michael Minor & Associates
Sound.Vibration.Air
Portland, Oregon

Figure 44
Noise Monitoring Locations
Federal Way Extension



Photo 1: Aerial View



Photo 2: Looking north



Photo 3: Looking south



Photo 4: Looking west

Monitoring Location M-47
26421 Pacific Hwy. S (Defunct Church)
Des Moines, Washington



Michael Minor & Associates
Sound.Vibration.Air
Portland, Oregon

Figure 45
Noise Monitoring Locations
Federal Way Extension



Photo 1: Aerial View



Photo 2: Looking south across S 268th Street at the Woodmont Library



Photo 3: Looking west



Photo 4: Looking south towards SR 99

Monitoring Location M-48
26636 19th Avenue S
Des Moines, Washington



Michael Minor & Associates
Sound.Vibration.Air
Portland, Oregon

Figure 46
Noise Monitoring Locations
Federal Way Extension

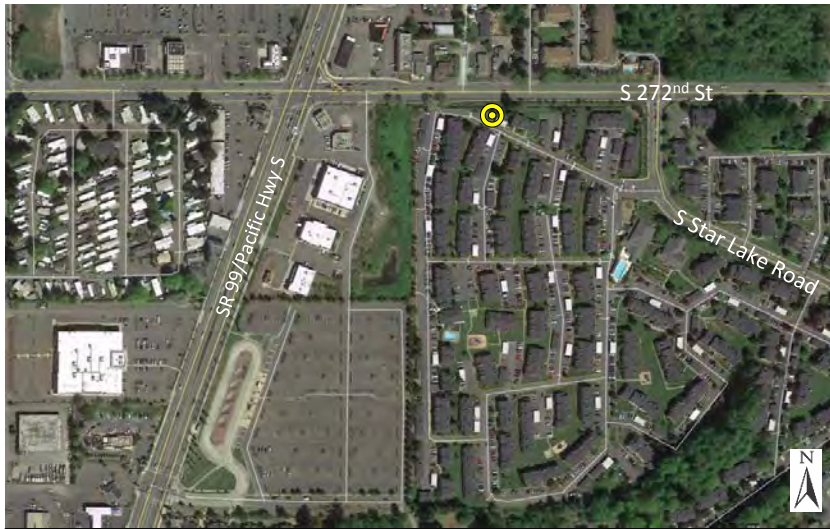


Photo 1: Aerial View



Photo 2: Looking west down S 272nd Street



Photo 3: Looking east towards S Star Lake Road



Photo 4: Looking south towards the interior of the apartment complex

Monitoring Location M-49 North
2211 S Star Lake Rd. (Club Palisades Apartments
North End) Federal Way, Washington



Michael Minor & Associates
Sound.Vibration.Air
Portland, Oregon

Figure 47
Noise Monitoring Locations
Federal Way Extension

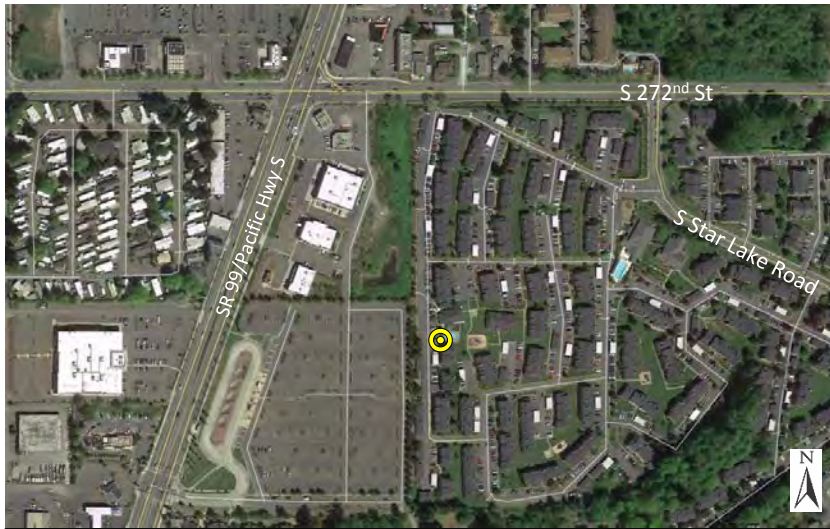


Photo 1: Aerial View



Photo 2: Looking east towards the interior of the apartment complex



Photo 3: Looking south



Photo 4: Looking north

Monitoring Location M-49 Central
2211 S Star Lake Rd. (Club Palisades Apartments
Pool Area) Federal Way, Washington



Michael Minor & Associates
Sound.Vibration.Air
Portland, Oregon

Figure 48
Noise Monitoring Locations
Federal Way Extension