



Photo 1: Aerial View



Photo 2: Looking north towards 16<sup>th</sup> Avenue S



Photo 3: Looking south



Photo 4: Looking northwest

Monitoring Location M-50  
27805 16th Place S  
Des Moines, Washington



Michael Minor & Associates  
Sound.Vibration.Air  
Portland, Oregon

Figure 49  
Noise Monitoring Locations  
Federal Way Extension



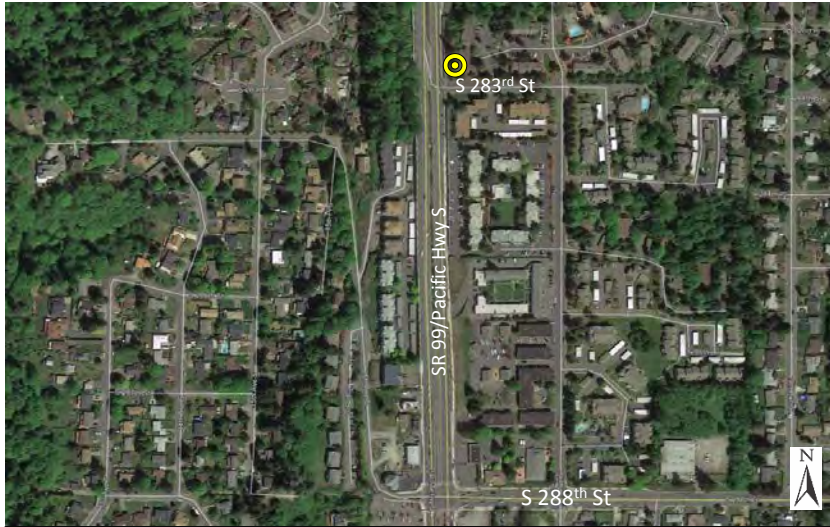


Photo 1: Aerial View



Photo 2: Looking southwest at SR 99



Photo 3: Looking south



Photo 4: Looking northeast

Monitoring Location M-51  
28120 18th Avenue S - Mariposa Apts.  
Federal Way, Washington



Michael Minor & Associates  
Sound.Vibration.Air  
Portland, Oregon

Figure 50  
Noise Monitoring Locations  
Federal Way Extension



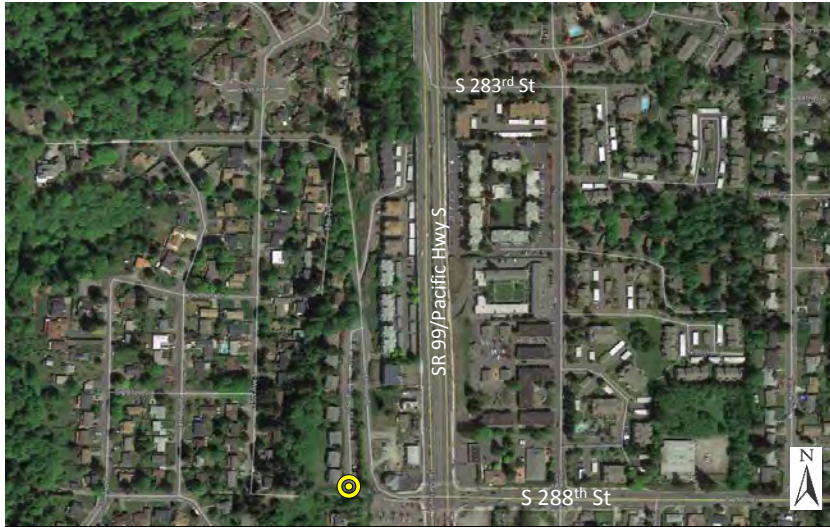


Photo 1: Aerial View



Photo 2: Looking southwest



Photo 3: Looking northwest



Photo 4: Looking north

Monitoring Location M-52  
28723 16th Avenue S, Bldg. G  
Federal Way, Washington



Michael Minor & Associates  
Sound.Vibration.Air  
Portland, Oregon

Figure 51  
Noise Monitoring Locations  
Federal Way Extension





Photo 1: Aerial View



Photo 2: Looking east



Photo 3: Looking west



Photo 4: Looking west at SR 99 over the fence at the residence

Monitoring Location M-53  
29353 18th Avenue S  
Federal Way, Washington



Michael Minor & Associates  
Sound.Vibration.Air  
Portland, Oregon

Figure 52  
Noise Monitoring Locations  
Federal Way Extension





Photo 1: Aerial View



Photo 2: Looking west at SR 99



Photo 3: Looking north at 18<sup>th</sup> Avenue S



Photo 4: Looking east

Monitoring Location M-54  
29850 18th Avenue S  
Federal Way, Washington



Michael Minor & Associates  
Sound.Vibration.Air  
Portland, Oregon

Figure 53  
Noise Monitoring Locations  
Federal Way Extension





Photo 1: Aerial View



Photo 2: Looking west at hotel entrance



Photo 3: Looking east at SR 99



Photo 4: Looking north

Monitoring Location M-55  
29815 Pacific Hwy. S (Federal Way Motel)  
Federal Way, Washington



Michael Minor & Associates  
Sound.Vibration.Air  
Portland, Oregon

Figure 54  
Noise Monitoring Locations  
Federal Way Extension





Photo 1: Aerial View



Photo 2: Looking north



Photo 3: Looking east toward 16<sup>th</sup> Ave S



Photo 4: Looking south

Monitoring Location M-56  
1472 S 303<sup>rd</sup> Street  
Federal Way, Washington



Michael Minor & Associates  
Sound.Vibration.Air  
Portland, Oregon

Figure 55  
Noise Monitoring Locations  
Federal Way Extension





Photo 1: Aerial View



Photo 2: Looking east toward View at the Lake Apartments

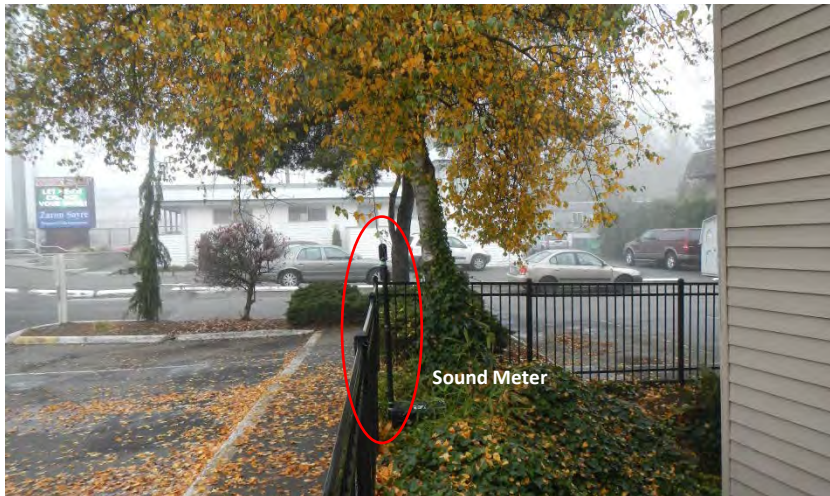


Photo 3: Looking north



Photo 4: Looking south

Monitoring Location M-57  
30602 Pacific Hwy. S (View at the Lake Apartments)  
Federal Way, Washington



Michael Minor & Associates  
Sound.Vibration.Air  
Portland, Oregon

Figure 56  
Noise Monitoring Locations  
Federal Way Extension





Photo 1: Aerial View



Photo 2: Looking east at SR99/Pacific Hwy.



Photo 3: Looking northeast at SR99/Pacific Hwy.



Photo 4: Looking south

Monitoring Location M-58  
31031 Pacific Hwy. S (Federal Way High School)  
Federal Way, Washington



Michael Minor & Associates  
Sound.Vibration.Air  
Portland, Oregon

Figure 57  
Noise Monitoring Locations  
Federal Way Extension





Photo 1: Aerial View



Photo 2: Looking northwest



Photo 3: Looking east toward residence



Photo 4: Looking south toward S 312th Street

Monitoring Location M-59  
1816 S 312th Street  
Federal Way, Washington



Michael Minor & Associates  
Sound.Vibration.Air  
Portland, Oregon

Figure 58  
Noise Monitoring Locations  
Federal Way Extension



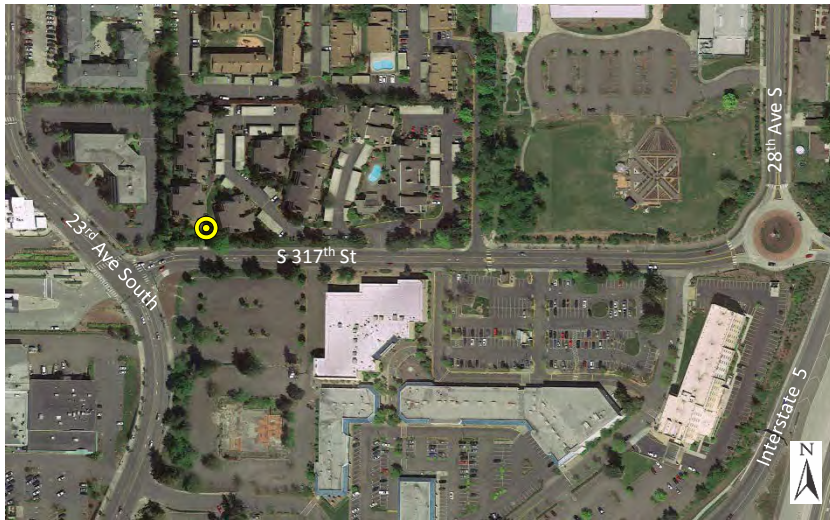


Photo 1: Aerial View



Photo 2: Looking southwest at S 317<sup>th</sup> Street



Photo 3: Looking northwest



Photo 4: Looking north across S 317<sup>th</sup> Street

Monitoring Location M-60  
2502 S 317th Street (Chelsea Court Condominiums)  
Federal Way, Washington



Michael Minor & Associates  
Sound.Vibration.Air  
Portland, Oregon

Figure 59  
Noise Monitoring Locations  
Federal Way Extension





Photo 1: Aerial View



Photo 2: Looking east at the Clarion Hotel



Photo 3: Looking south at the Clarion Hotel



Photo 4: Looking north at S 316th Street

Monitoring Location M-61  
31611 20th Avenue S (Clarion Hotel)  
Federal Way, Washington



Michael Minor & Associates  
Sound.Vibration.Air  
Portland, Oregon

Figure 60  
Noise Monitoring Locations  
Federal Way Extension



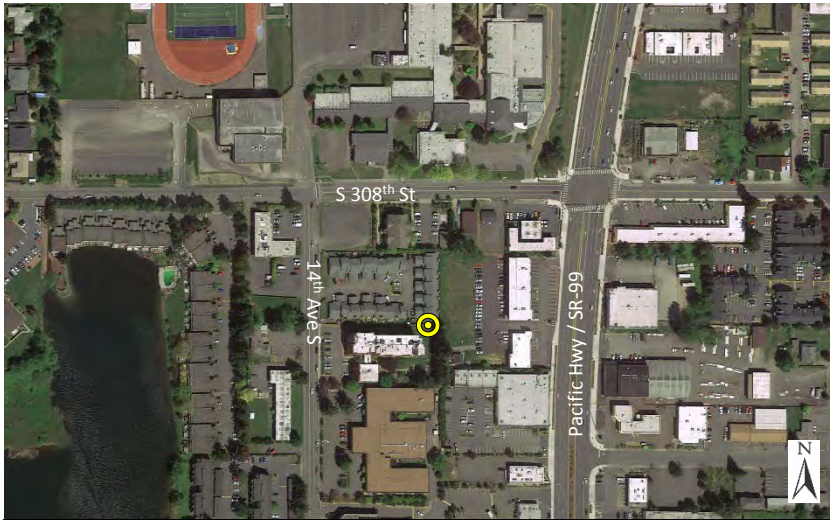


Photo 1: Aerial View



Photo 2: Looking east toward Pacific Hwy / SR-99



Photo 3: Looking southwest



Photo 4: Looking north

Monitoring Location M-62  
1444 14th Avenue S (Bellridge Condominiums)  
Federal Way, Washington



Michael Minor & Associates  
Sound.Vibration.Air  
Portland, Oregon

Figure 61  
Noise Monitoring Locations  
Federal Way Extension





Photo 1: Aerial View

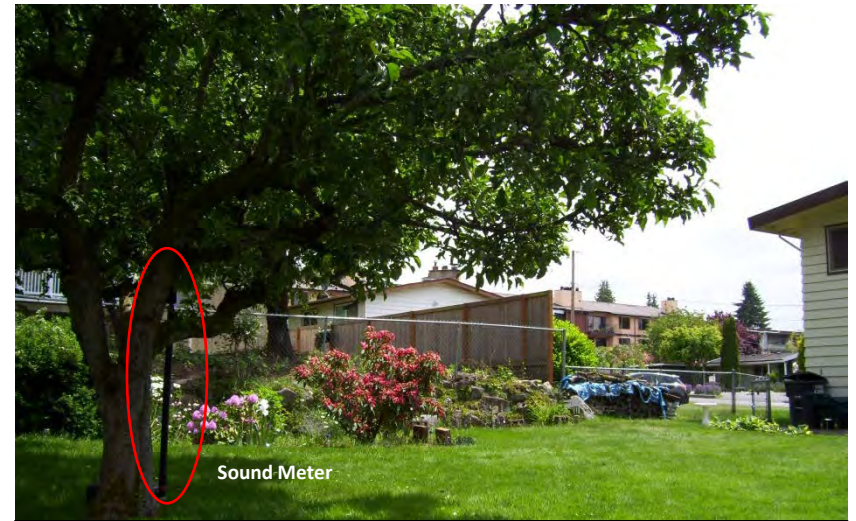


Photo 2: Looking southwest toward 28<sup>th</sup> Ave S



Photo 3: Looking northwest

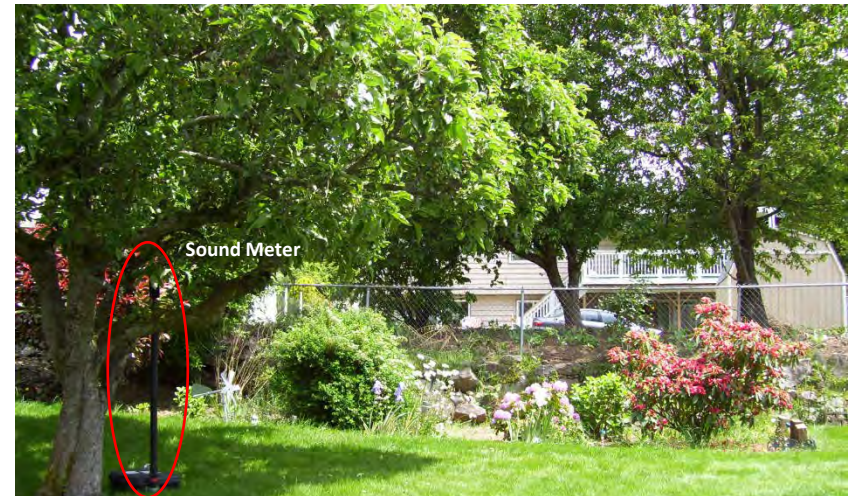


Photo 4: Looking east

Monitoring Location M-63  
2670 S 227th Place  
Des Moines, Washington



Michael Minor & Associates  
Sound.Vibration.Air  
Portland, Oregon

Figure 62  
Noise Monitoring Locations  
Federal Way Extension



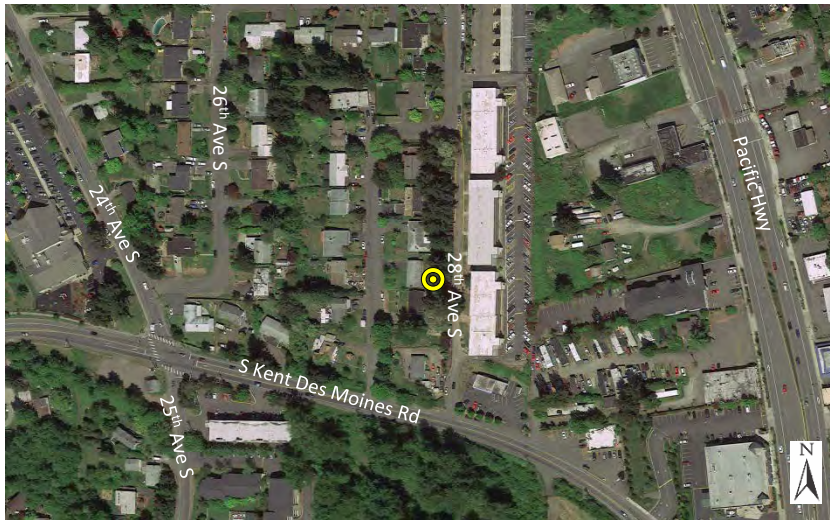


Photo 1: Aerial View



Photo 2: Looking southwest



Photo 3: Looking north



Photo 4: Looking east

Monitoring Location M-64  
22902 27<sup>th</sup> Avenue S  
Des Moines, Washington



Michael Minor & Associates  
Sound.Vibration.Air  
Portland, Oregon

Figure 63  
Noise Monitoring Locations  
Federal Way Extension



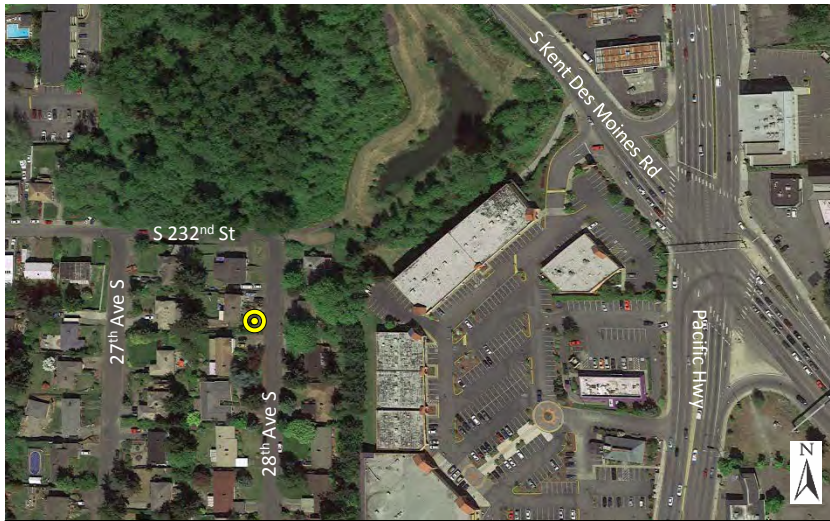


Photo 1: Aerial View



Photo 2: Looking northeast in the direction of S Kent Des Moines Rd



Photo 3: Looking southwest at 23219 28<sup>th</sup> Avenue

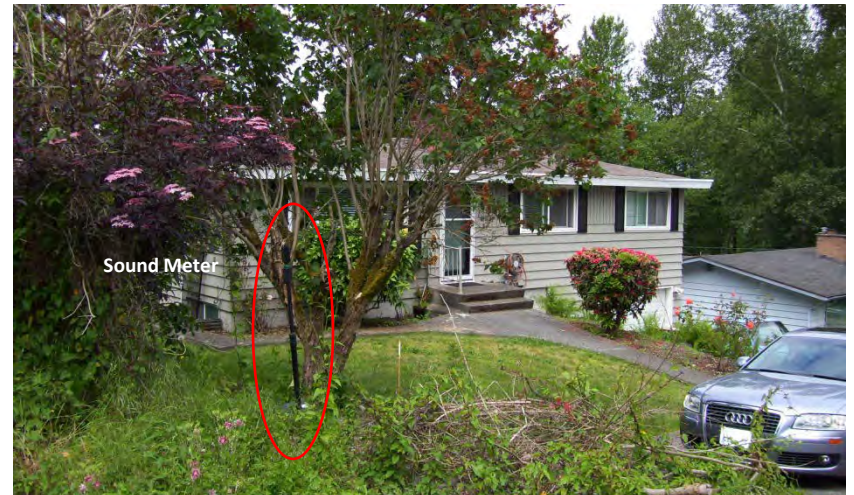


Photo 4: Looking northwest at residence

Monitoring Location M-65  
23211 28<sup>th</sup> Avenue  
Des Moines, Washington



Michael Minor & Associates  
Sound.Vibration.Air  
Portland, Oregon

Figure 64  
Noise Monitoring Locations  
Federal Way Extension





Photo 1: Aerial View



Photo 2: Looking west at Highline Community College

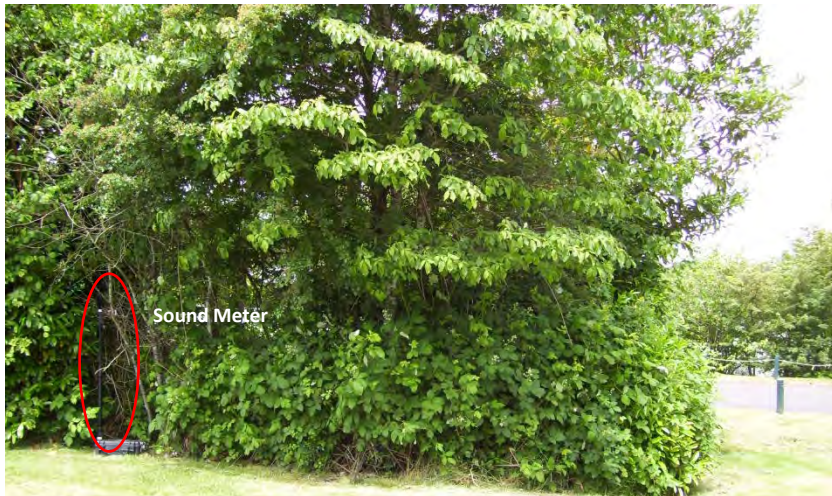


Photo 3: Looking north



Photo 4: Looking south

Monitoring Location M-66 East  
Highline Community College (East Parking Lot)  
Des Moines, Washington



Michael Minor & Associates  
Sound.Vibration.Air  
Portland, Oregon

Figure 65  
Noise Monitoring Locations  
Federal Way Extension



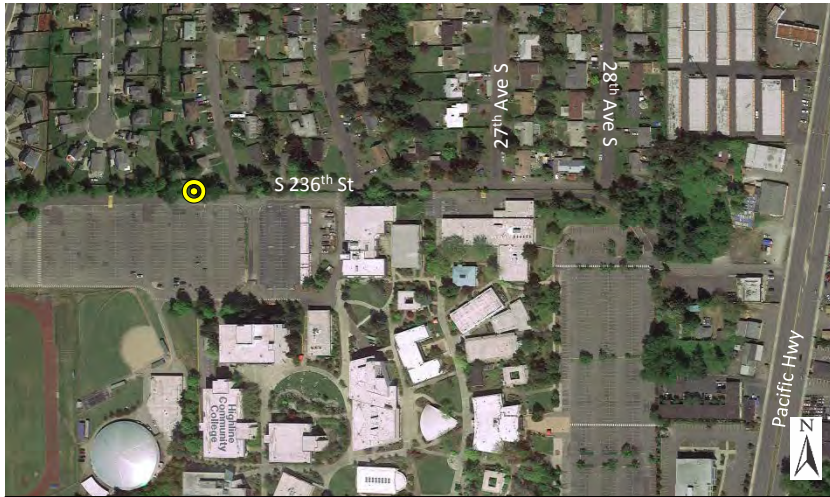


Photo 1: Aerial View



Photo 2: Looking northwest



Photo 3: Looking west



Photo 4: Looking southeast

Monitoring Location M-66 West  
Highline Community College (West Parking Lot)  
Des Moines, Washington



Michael Minor & Associates  
Sound.Vibration.Air  
Portland, Oregon

Figure 66  
Noise Monitoring Locations  
Federal Way Extension





Photo 1: Aerial View



Photo 2: Looking northwest



Photo 3: Looking southwest



Photo 4: Looking southeast

Monitoring Location M-67  
29045 15<sup>th</sup> Place S  
Federal Way, Washington



Michael Minor & Associates  
Sound.Vibration.Air  
Portland, Oregon

Figure 67  
Noise Monitoring Locations  
Federal Way Extension



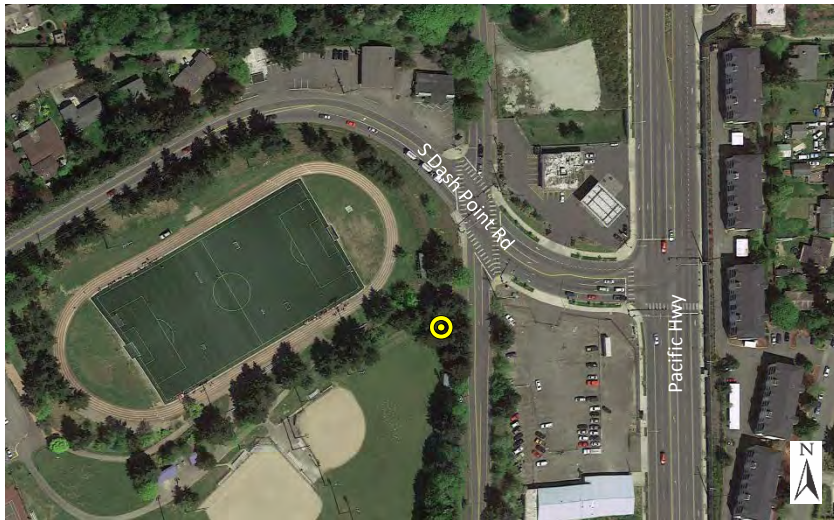


Photo 1: Aerial View



Photo 2: Looking southwest



Photo 3: Looking southeast



Photo 4: Looking northeast

Monitoring Location M-68  
1600 SW Dash Point Road (Sacajawea Park)  
Federal Way, Washington



Michael Minor & Associates  
Sound.Vibration.Air  
Portland, Oregon

Figure 68  
Noise Monitoring Locations  
Federal Way Extension





Photo 1: Aerial View



Photo 2: Looking south



Photo 3: Looking west



Photo 4: Looking northeast

Monitoring Location M-69  
31622 Pacific Hwy. (Comfort Inn)  
Federal Way, Washington



Michael Minor & Associates  
Sound.Vibration.Air  
Portland, Oregon

Figure 69  
Noise Monitoring Locations  
Federal Way Extension





Photo 1: Aerial View



Photo 2: Looking southwest



Photo 3: Looking west



Photo 4: Looking east toward I-5

Monitoring Location M-70  
2460 S 320th Street (Walkway between Hotels)  
Federal Way, Washington



Michael Minor & Associates  
Sound.Vibration.Air  
Portland, Oregon

Figure 70  
Noise Monitoring Locations  
Federal Way Extension



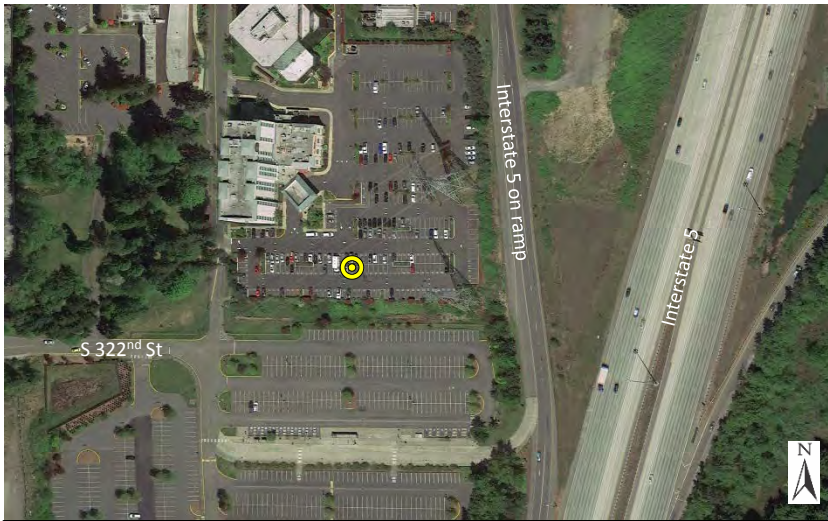


Photo 1: Aerial View



Photo 2: Looking northwest



Photo 3: Looking northeast



Photo 4: Looking southeast

Monitoring Location M-71  
32124 25th Avenue (Best Western Plus Evergreen  
Inn & Suites)  
Federal Way, Washington



Michael Minor & Associates  
Sound.Vibration.Air  
Portland, Oregon

Figure 71  
Noise Monitoring Locations  
Federal Way Extension





Photo 1: Aerial View



Photo 2: Looking northwest



Photo 3: Looking north



Photo 4: Looking southeast toward I-5

Monitoring Location M-72  
2101 S 324th Street (Belmor Park)  
Federal Way, Washington



Michael Minor & Associates  
Sound.Vibration.Air  
Portland, Oregon

Figure 72  
Noise Monitoring Locations  
Federal Way Extension





Photo 1: Aerial View



Photo 2: Looking northwest



Photo 3: Looking northeast



Photo 4: Looking southeast toward I-5

Monitoring Location M-100  
31<sup>st</sup> Ave. S - Entrance to Highline Water District Towers  
SeaTac, Washington



Michael Minor & Associates  
Sound.Vibration.Air  
Portland, Oregon

Figure 73  
Noise Monitoring Locations  
Federal Way Extension



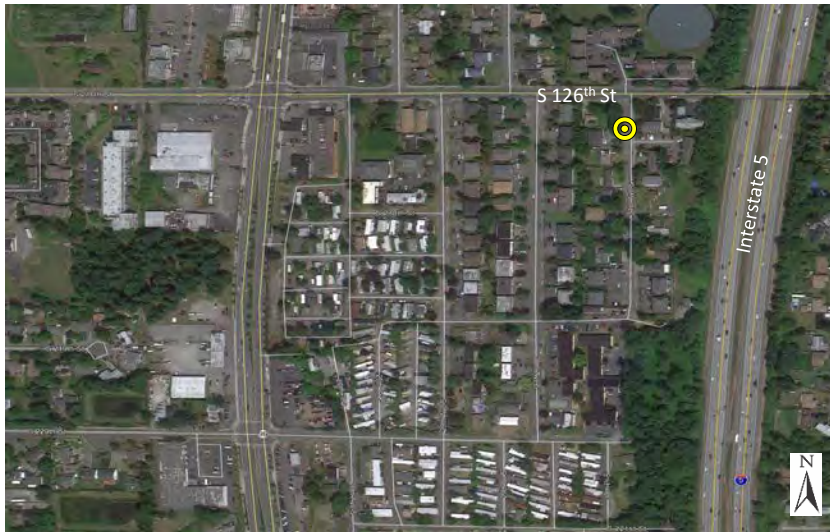


Photo 1: Aerial View



Photo 2: Looking northeast at S 216th Street



Photo 3: Looking east toward I-5



Photo 4: Looking west at apartments and home

Monitoring Location M-101  
21615 31st Avenue  
SeaTac, Washington



Michael Minor & Associates  
Sound.Vibration.Air  
Portland, Oregon

Figure 74  
Noise Monitoring Locations  
Federal Way Extension