



Photo 1: Aerial View



Photo 2: Looking north



Photo 3: Looking northwest



Photo 4: Looking east toward I-5

Monitoring Location M-102
3028 S 224th Street
SeaTac, Washington



Michael Minor & Associates
Sound.Vibration.Air
Portland, Oregon

Figure 75
Noise Monitoring Locations
Federal Way Extension



Photo 1: Aerial View



Photo 2: Looking southwest



Photo 3: Looking east toward I-5



Photo 4: Looking north

Monitoring Location M-103
3028 S 225th Street
SeaTac, Washington



Michael Minor & Associates
Sound.Vibration.Air
Portland, Oregon

Figure 76
Noise Monitoring Locations
Federal Way Extension



Photo 1: Aerial View



Photo 2: Looking south



Photo 3: Looking north



Photo 4: Looking northwest

Monitoring Location M-104
23030 30th Avenue S
SeaTac, Washington



Michael Minor & Associates
Sound.Vibration.Air
Portland, Oregon

Figure 77
Noise Monitoring Locations
Federal Way Extension



Photo 1: Aerial View



Photo 2: Looking southwest toward SR 99



Photo 3: Looking south east at I-5



Photo 4: Looking north up I-5

Monitoring Location M-105
South End of the Midway Landfill
Kent, Washington



Michael Minor & Associates
Sound.Vibration.Air
Portland, Oregon

Figure 78
Noise Monitoring Locations
Federal Way Extension



Photo 1: Aerial View



Photo 2: Looking southeast toward I-5



Photo 3: Looking northwest at back of home



Photo 4: Looking north at 31st Avenue S

Monitoring Location M-106
25422 31st Avenue S
Kent, Washington



Michael Minor & Associates
Sound.Vibration.Air
Portland, Oregon

Figure 79
Noise Monitoring Locations
Federal Way Extension

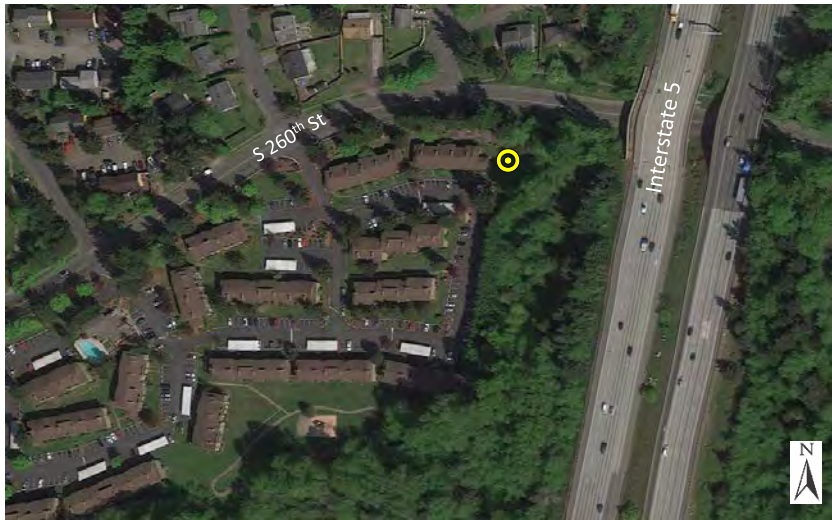


Photo 1: Aerial View



Photo 2: Looking south



Photo 3: Looking west



Photo 4: Looking northwest at S 260th Street

Monitoring Location M-107A
2707 S 260th Ln. (Pembroke Apartments – North End)
Kent, Washington



Michael Minor & Associates
Sound.Vibration.Air
Portland, Oregon

Figure 80
Noise Monitoring Locations
Federal Way Extension

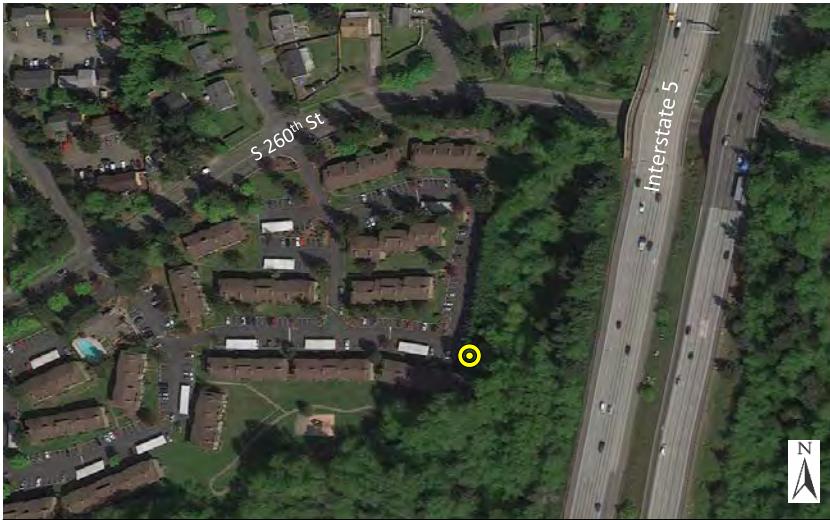


Photo 1: Aerial View



Photo 2: Looking west



Photo 3: Looking southwest



Photo 4: Looking northeast toward I-5 from apartment entrance

Monitoring Location M-107B
2707 S 260th Ln. (Pembroke Apartments – South End)
Kent, Washington



Michael Minor & Associates
Sound.Vibration.Air
Portland, Oregon

Figure 81
Noise Monitoring Locations
Federal Way Extension



Photo 1: Aerial View



Photo 2: Looking south across 28th Avenue S toward the park-and-ride



Photo 3: Looking north



Photo 4: Looking east at I-5

Monitoring Location M-108
E. Side of 28th Ave. S North of Star Lake Park-and-Ride
Kent, Washington



Michael Minor & Associates
Sound.Vibration.Air
Portland, Oregon

Figure 82
Noise Monitoring Locations
Federal Way Extension



Photo 1: Aerial View



Photo 2: Looking south



Photo 3: Looking southeast at I-5



Photo 4: Looking northwest

Monitoring Location M-109
Vacant Lot North of 27628 27th Avenue S
Federal Way, Washington



Michael Minor & Associates
Sound.Vibration.Air
Portland, Oregon

Figure 83
Noise Monitoring Locations
Federal Way Extension

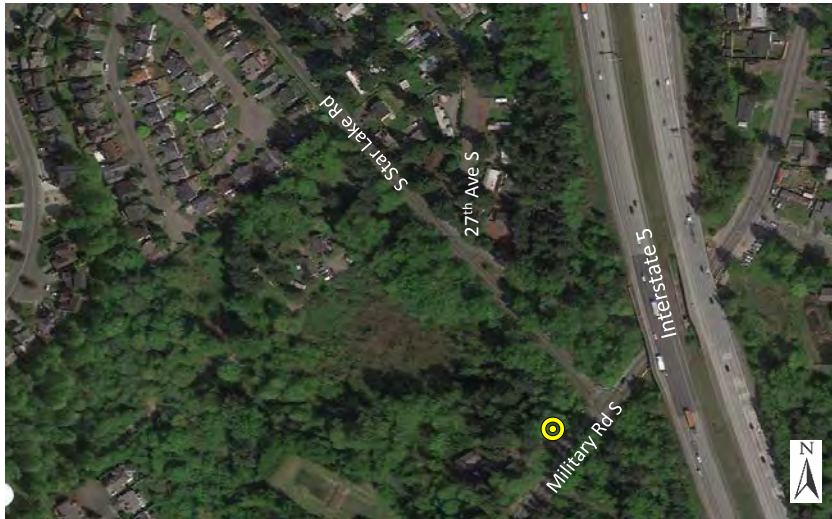


Photo 1: Aerial View



Photo 2: Looking southeast at Military Road S



Photo 3: Looking northeast toward Star Lake Road and I-5



Photo 4: Looking west at Star Lake Church of God

Monitoring Location M-110
ROW in front of 27709 Military Road S
(Star Lake Church of God)
Federal Way, Washington



Michael Minor & Associates
Sound.Vibration.Air
Portland, Oregon

Figure 84
Noise Monitoring Locations
Federal Way Extension



Photo 1: Aerial View



Photo 2: Looking northwest toward front of home



Photo 3: Looking northeast



Photo 4: Looking east toward I-5

Monitoring Location M-111
3007 S 284th Street
Federal Way, Washington



Michael Minor & Associates
Sound.Vibration.Air
Portland, Oregon

Figure 85
Noise Monitoring Locations
Federal Way Extension



Photo 1: Aerial View



Photo 2: Looking east toward I-5



Photo 3: Looking west



Photo 4: Looking northeast

Monitoring Location M-112
Sidewalk South of 28528 29th Place S
Federal Way, Washington



Michael Minor & Associates
Sound.Vibration.Air
Portland, Oregon

Figure 86
Noise Monitoring Locations
Federal Way Extension



Photo 1: Aerial View



Photo 2: Looking northeast toward I-5



Photo 3: Looking south



Photo 4: Looking west

Monitoring Location M-113
3001 S 288th Street (48 Sir Lancelot Court in
Camelot Square Mobile Home Park)
Federal Way, Washington



Michael Minor & Associates
Sound.Vibration.Air
Portland, Oregon

Figure 87
Noise Monitoring Locations
Federal Way Extension



Photo 1: Aerial View



Photo 2: Looking south at home



Photo 3: Looking northwest



Photo 4: Looking north toward noise barrier and I-5

Monitoring Location M-114
 3001 S 288th Street (204 Sir Galahad Court in
 Camelot Square Mobile Home Park)
 Federal Way, Washington



Michael Minor & Associates
 Sound.Vibration.Air
 Portland, Oregon

Figure 88
 Noise Monitoring Locations
 Federal Way Extension

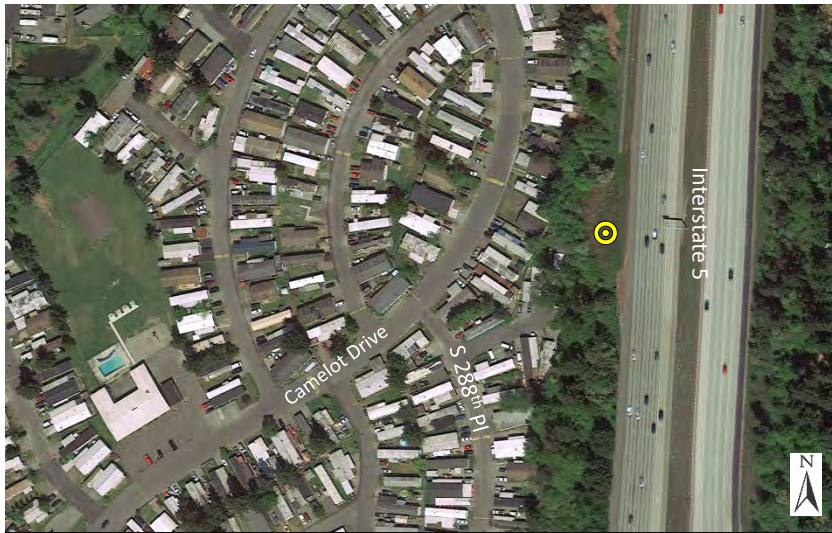


Photo 1: Aerial View



Photo 2: Looking north at existing noise barrier along I-5



Photo 3: Looking northeast at both southbound and northbound lanes



Photo 4: Looking south toward traffic safety barrier along I-5

Monitoring Location M-115
 Gap between existing noise and traffic safety
 barriers east of Camelot Square Mobile Home Park
 Federal Way, Washington



Michael Minor & Associates
 Sound.Vibration.Air
 Portland, Oregon

Figure 89
 Noise Monitoring Locations
 Federal Way Extension

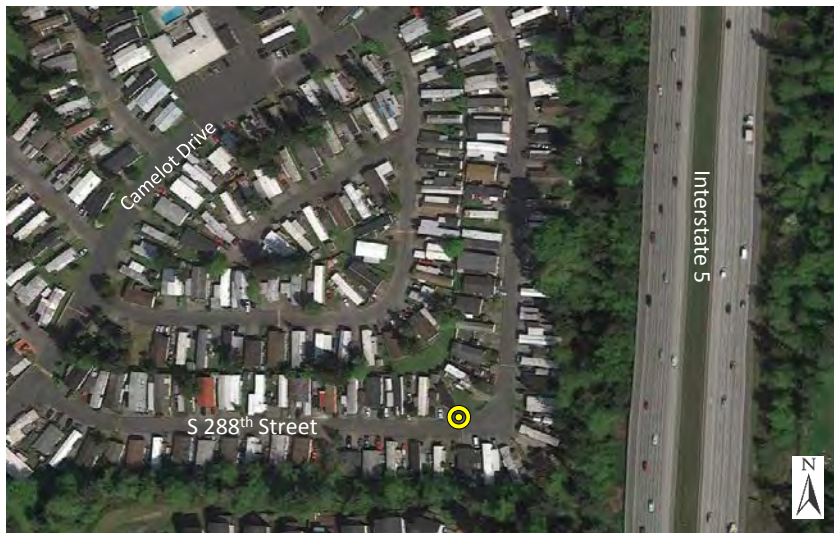


Photo 1: Aerial View



Photo 2: Looking east toward I-5



Photo 3: Looking north at front of home



Photo 4: Looking northeast toward east end of park

Monitoring Location M-116
3001 S 288th Street (375 Canterbury Drive in
Camelot Square Mobile Home Park)
Federal Way, Washington



Michael Minor & Associates
Sound.Vibration.Air
Portland, Oregon

Figure 90
Noise Monitoring Locations
Federal Way Extension

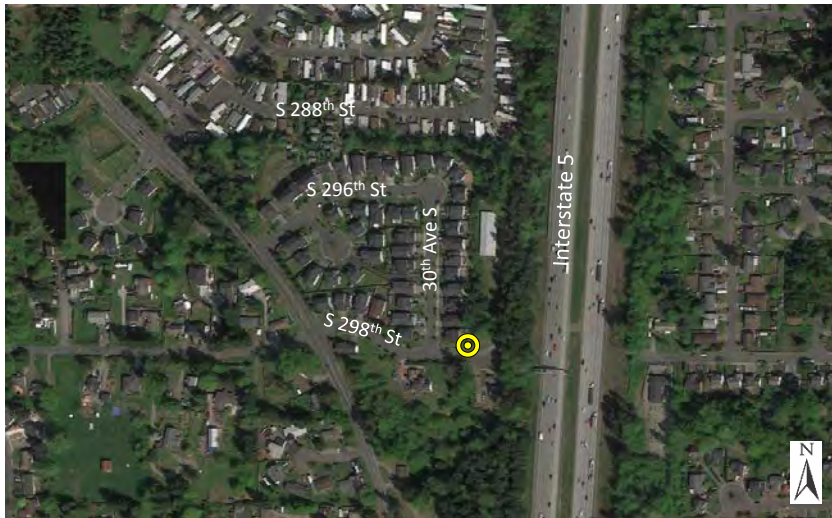


Photo 1: Aerial View



Photo 2: Looking northwest



Photo 3: Looking southeast



Photo 4: Looking east toward I-5

Monitoring Location M-117
21815 31st Avenue
Federal Way, Washington



Michael Minor & Associates
Sound.Vibration.Air
Portland, Oregon

Figure 91
Noise Monitoring Locations
Federal Way Extension



Photo 1: Aerial View



Photo 2: Looking west up S 304th Street at Military Road S



Photo 3: Looking northeast



Photo 4: Looking east at I-5

Monitoring Location M-118
ROW South of 2910 S 304th Street
Federal Way, Washington



Michael Minor & Associates
Sound.Vibration.Air
Portland, Oregon

Figure 92
Noise Monitoring Locations
Federal Way Extension



Photo 1: Aerial View



Photo 2: Looking west



Photo 3: Looking southeast toward I-5



Photo 4: Looking north

Monitoring Location M-119
31408 28th Avenue S, Units D 101 & 102
Federal Way, Washington



Michael Minor & Associates
Sound.Vibration.Air
Portland, Oregon

Figure 93
Noise Monitoring Locations
Federal Way Extension



Photo 1: Aerial View



Photo 2: Looking northeast toward I-5



Photo 3: Looking southeast at homes on bluff



Photo 4: Looking north across S 288th Street

Monitoring Location M-120
3001 S 288th Street (254 Canterbury Drive
(empty lot) in Camelot Square Mobile Home Park)
Federal Way, Washington



Michael Minor & Associates
Sound.Vibration.Air
Portland, Oregon

Figure 94
Noise Monitoring Locations
Federal Way Extension



Photo 1: Aerial View



Photo 2: Looking west along 296th Street



Photo 3: Looking northeast across intersection toward I-5



Photo 4: Looking east across 30th Avenue S

Monitoring Location M-121
Sidewalk on SW corner of 296th and 30th Ave. S
Federal Way, Washington



Michael Minor & Associates
Sound.Vibration.Air
Portland, Oregon

Figure 95
Noise Monitoring Locations
Federal Way Extension



Photo 1: Aerial View



Photo 2: Looking west at homes



Photo 3: Looking northeast toward corner and beyond toward I-5



Photo 4: Looking south along 30th Avenue S

Monitoring Location M-122
Sidewalk between 29773 and 29747 30th Ave. S
Federal Way, Washington



Michael Minor & Associates
Sound.Vibration.Air
Portland, Oregon

Figure 96
Noise Monitoring Locations
Federal Way Extension

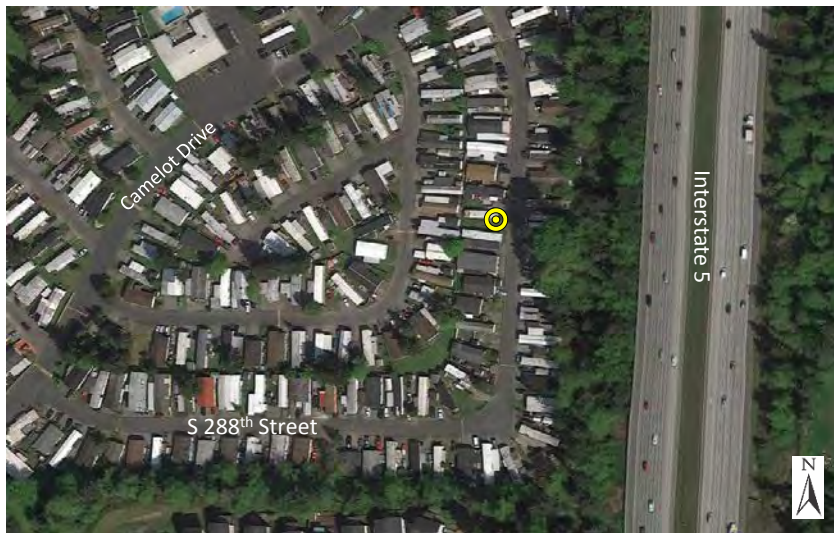


Photo 1: Aerial View



Photo 2: Looking west into the park



Photo 3: Looking east toward I-5



Photo 4: Looking south toward S 288th Street

Monitoring Location M-123
 3001 S 288th Street (Empty lot between 382 and 383
 Canterbury Drive in Camelot Square Mobile Home Park)
 Federal Way, Washington



Michael Minor & Associates
 Sound.Vibration.Air
 Portland, Oregon

Figure 97
 Noise Monitoring Locations
 Federal Way Extension

This page intentionally left blank.