

INTEGRATED TRANSIT SERVICE ON MERCER ISLAND

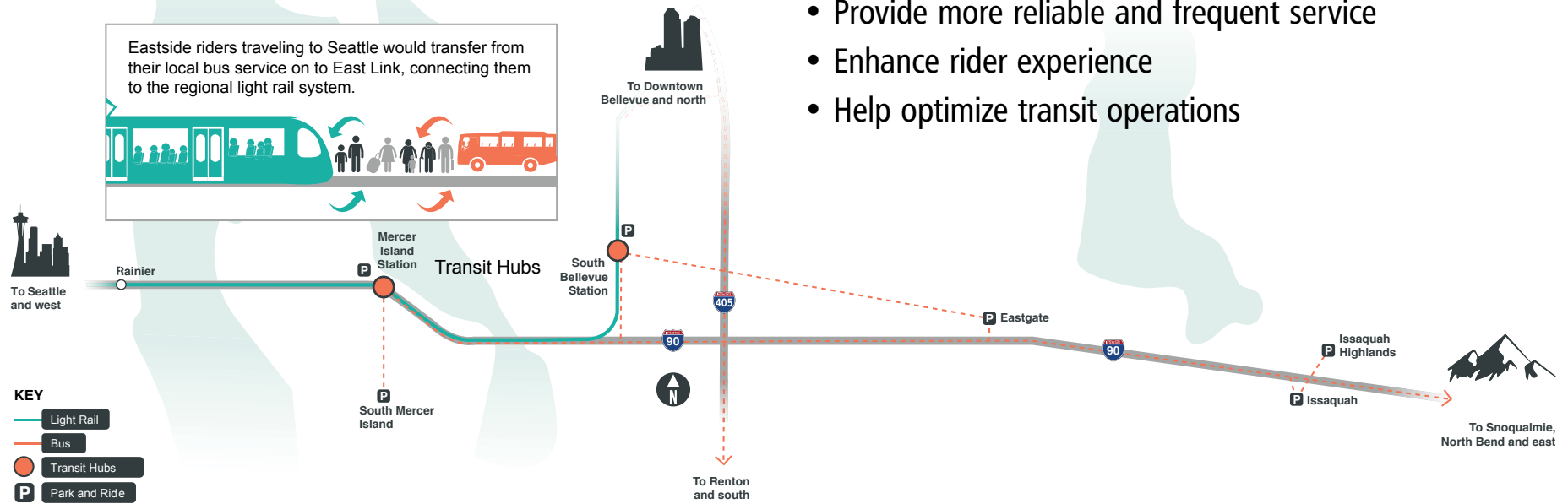
EAST LINK EXTENSION

The East Link Extension, extending light rail to Mercer Island, Bellevue and Redmond, will start service in 2023. Providing for effective and efficient connections to the system is an important part of East Link's final design process. Sound Transit and King County Metro are working together to provide fast and reliable connections between Seattle and the Eastside.

Sound Transit and King County are designing changes to the way transit crosses I-90. Bus and light rail service will connect at regional transit hubs, including the Mercer Island and South Bellevue stations, where riders will transfer between modes.

The light rail stations at South Bellevue and Mercer Island will:

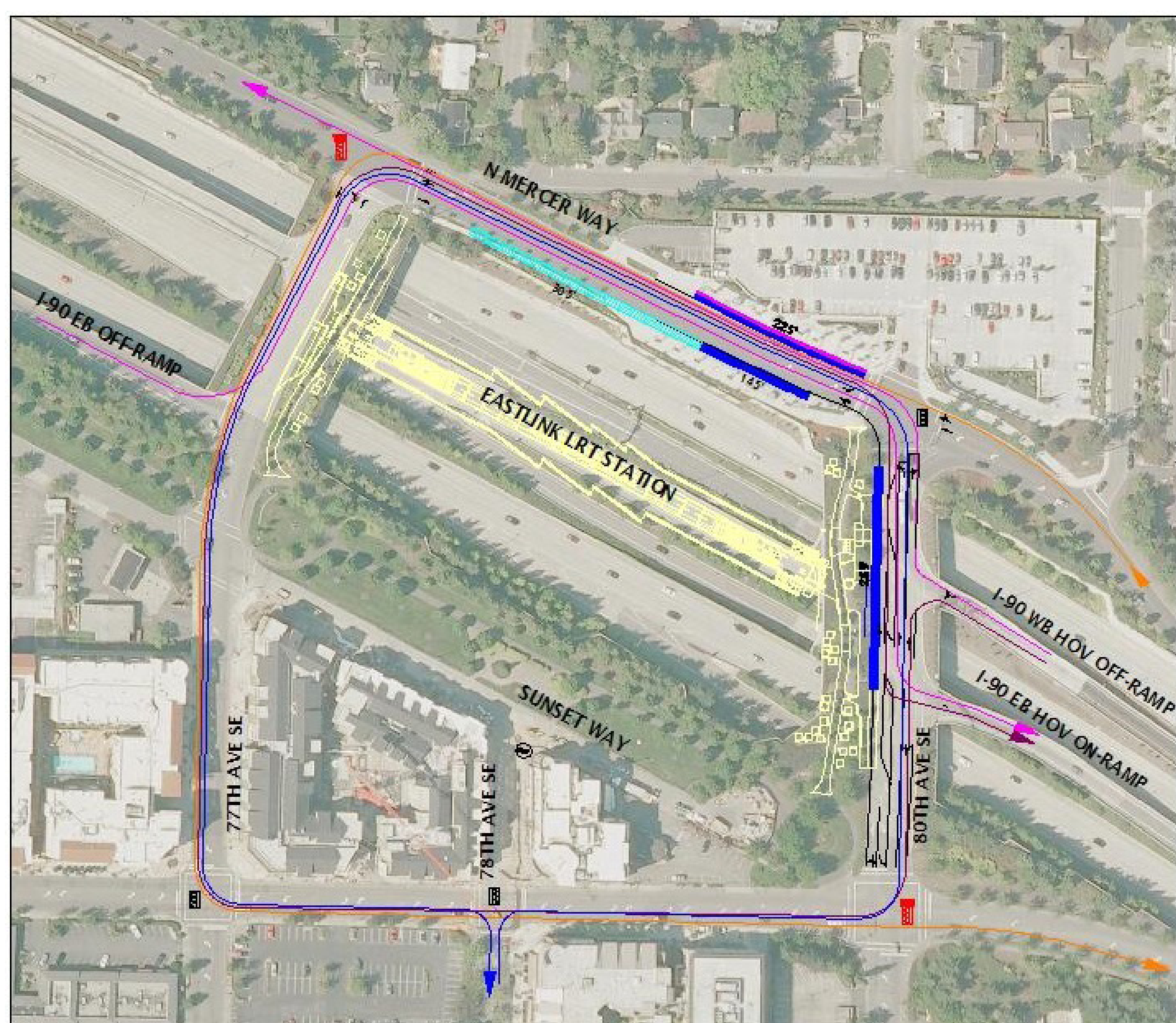
- Smooth bus-rail transfers
- Help improve efficiency and cost-savings
- Provide more reliable and frequent service
- Enhance rider experience
- Help optimize transit operations



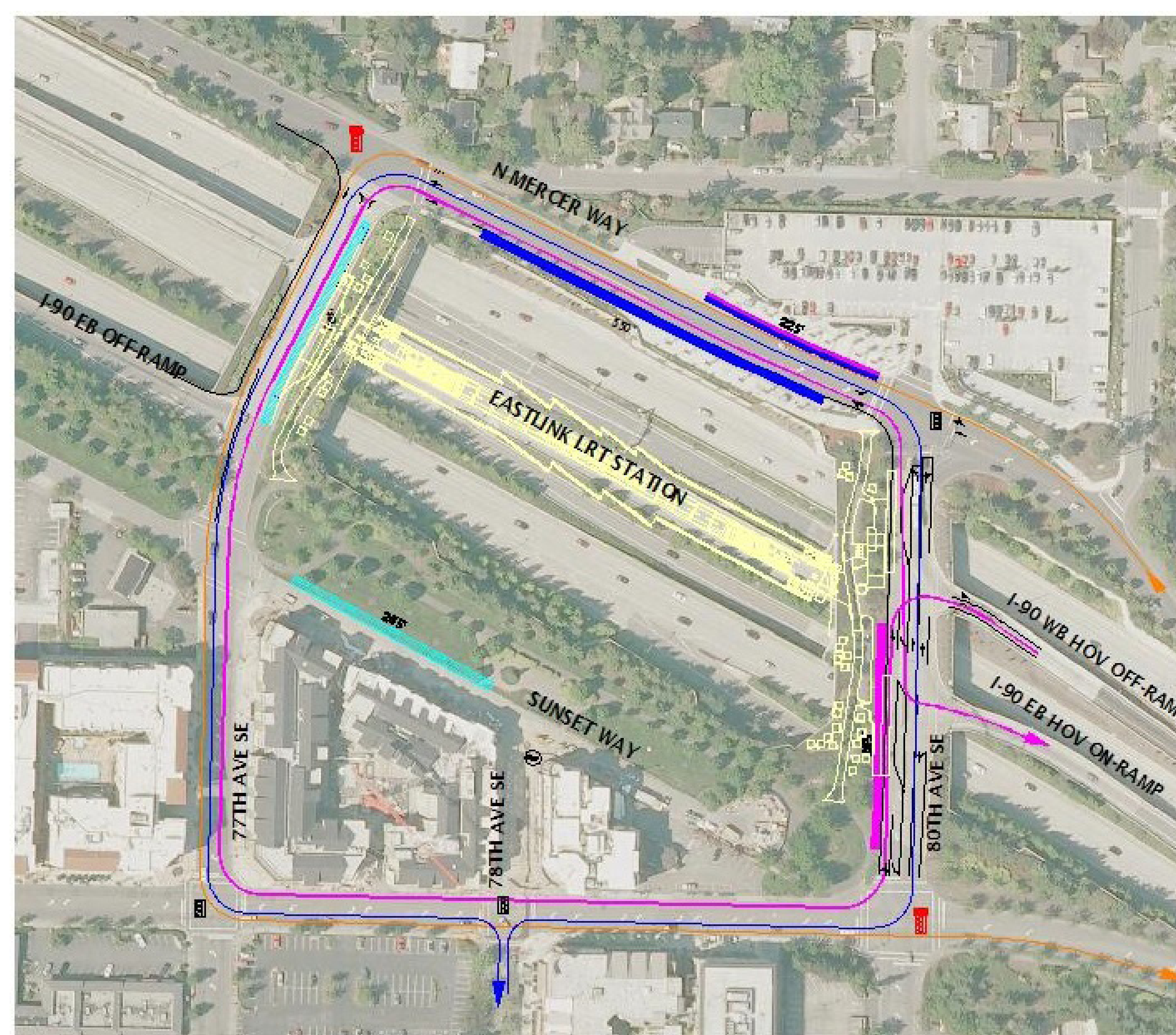
INTEGRATED TRANSIT SERVICE ON MERCER ISLAND

EAST LINK EXTENSION

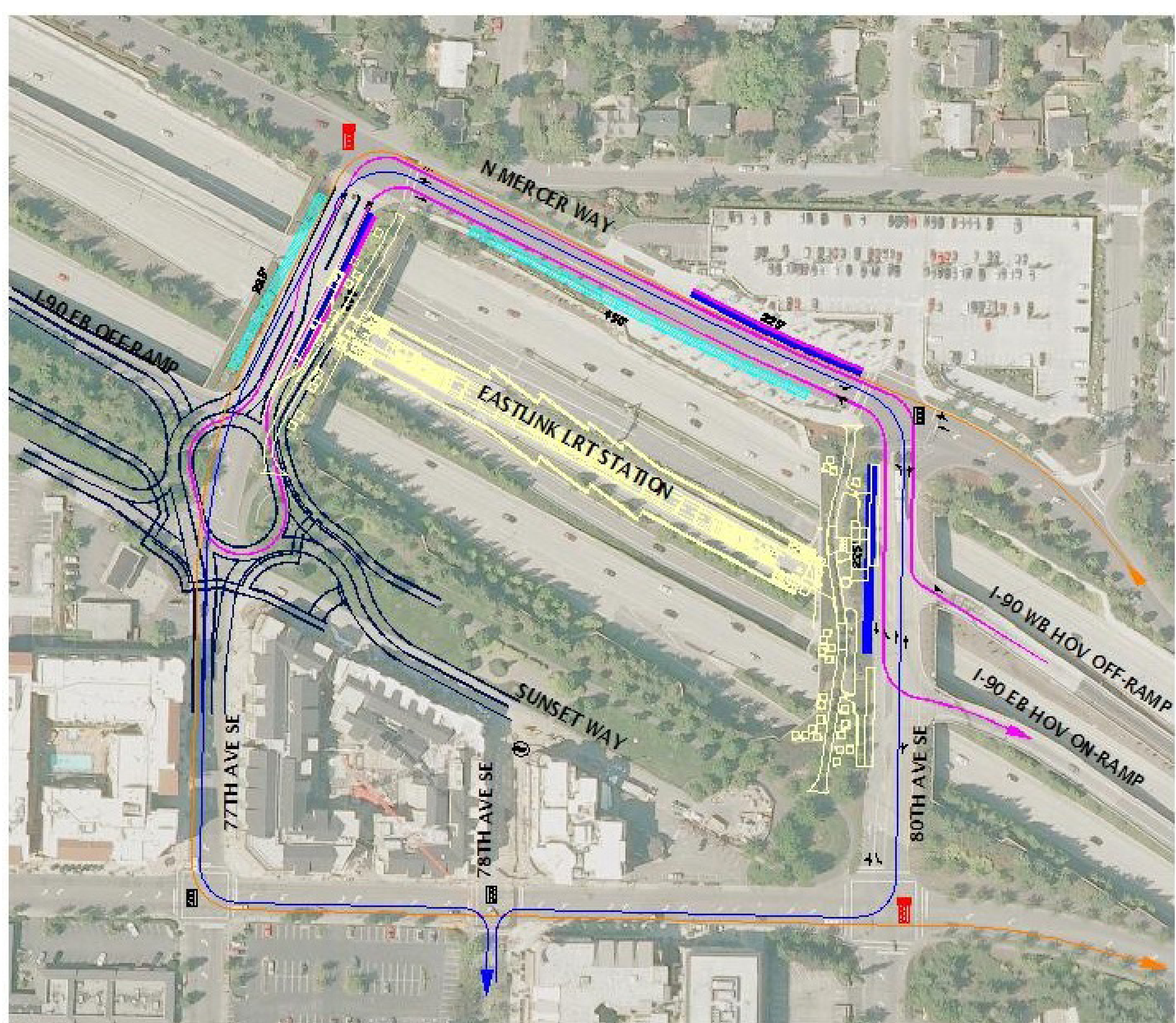
The four scenarios analyzed in the integrated transit study and presented to the community in July are shown below.



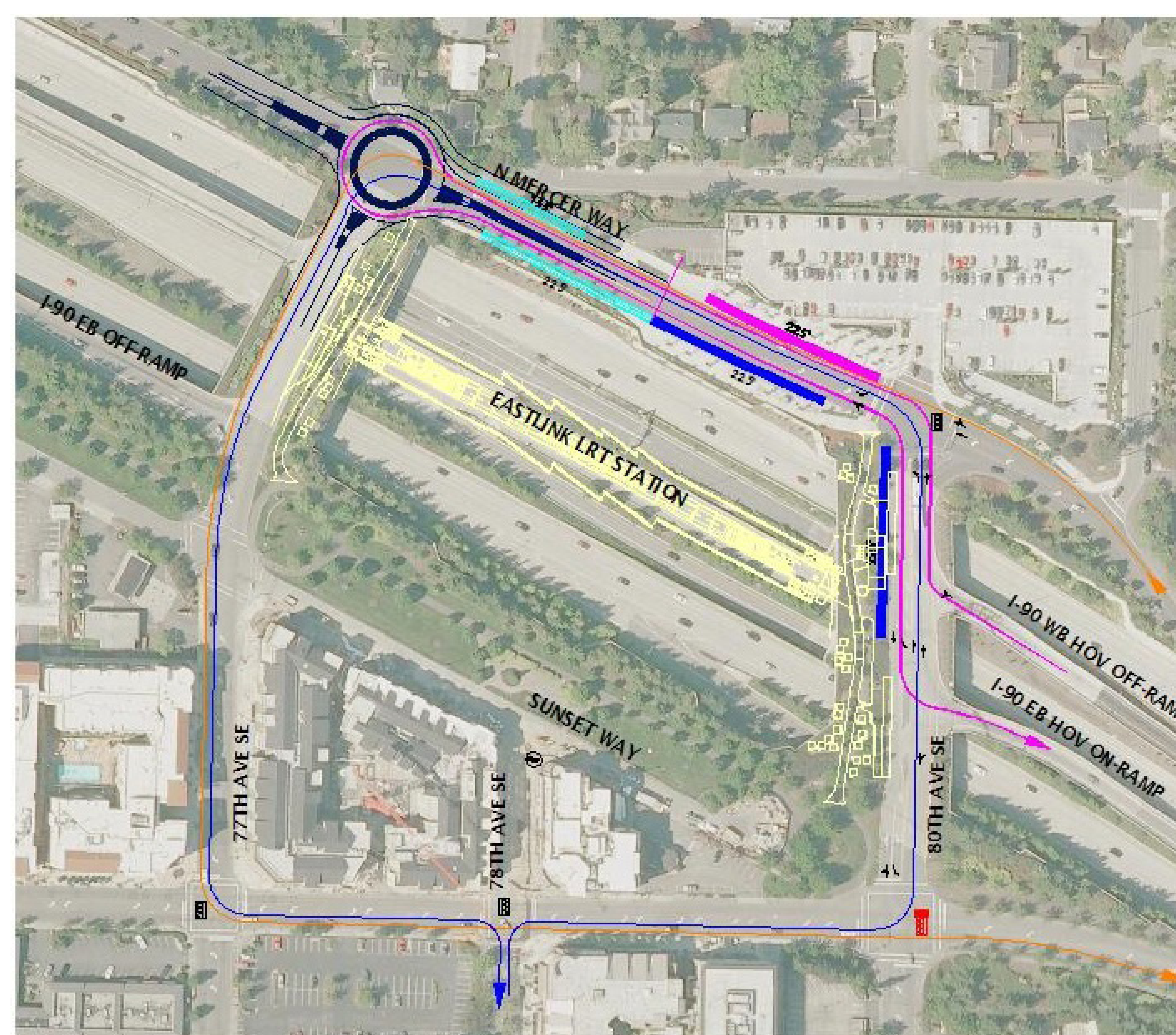
Scenario 1 represents existing conditions as described in the preferred alternative from the East Link Final Environmental Impact Statement document. It serves as the baseline and provides a comparison for the other scenarios.



Scenario 2 represents a bus operating scheme that operates in a clockwise direction from the westbound 80th Ave. HOV off-ramp to the 80th Ave. HOV on-ramp.



Scenario 4 represents a bus operating scheme that operates in a counter-clockwise direction from the westbound 80th Ave. HOV off-ramp to the 80th Ave. HOV on-ramp with a new roundabout at N Mercer Way & 77th Ave. SE.



Scenario 3 represents a bus operating scheme that operates in a counter-clockwise direction from the westbound 80th Ave. HOV off-ramp to the 80th Ave. HOV on-ramp with a new roundabout at Sunset Highway SE & 77th Ave. SE.

- | | | | | |
|--------|-------------------|--------------------------------|---------------------------|-------------------------|
| Legend | BUS DROP-OFF AREA | BUS PICK UP | MERCER ISLAND LOOP ROUTES | KC METRO ROUTE 216 |
| | BUS LAYOVER AREA | MERCER ISLAND EASTLINK STATION | MERCER ISLAND E/W LOOP | SOUND TRANSIT ROUTE 554 |

NO LONGER UNDER CONSIDERATION

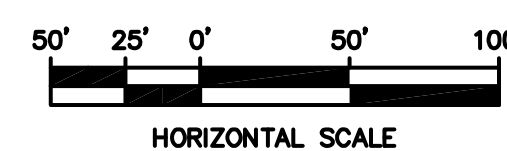
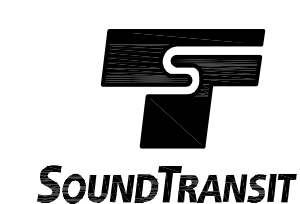
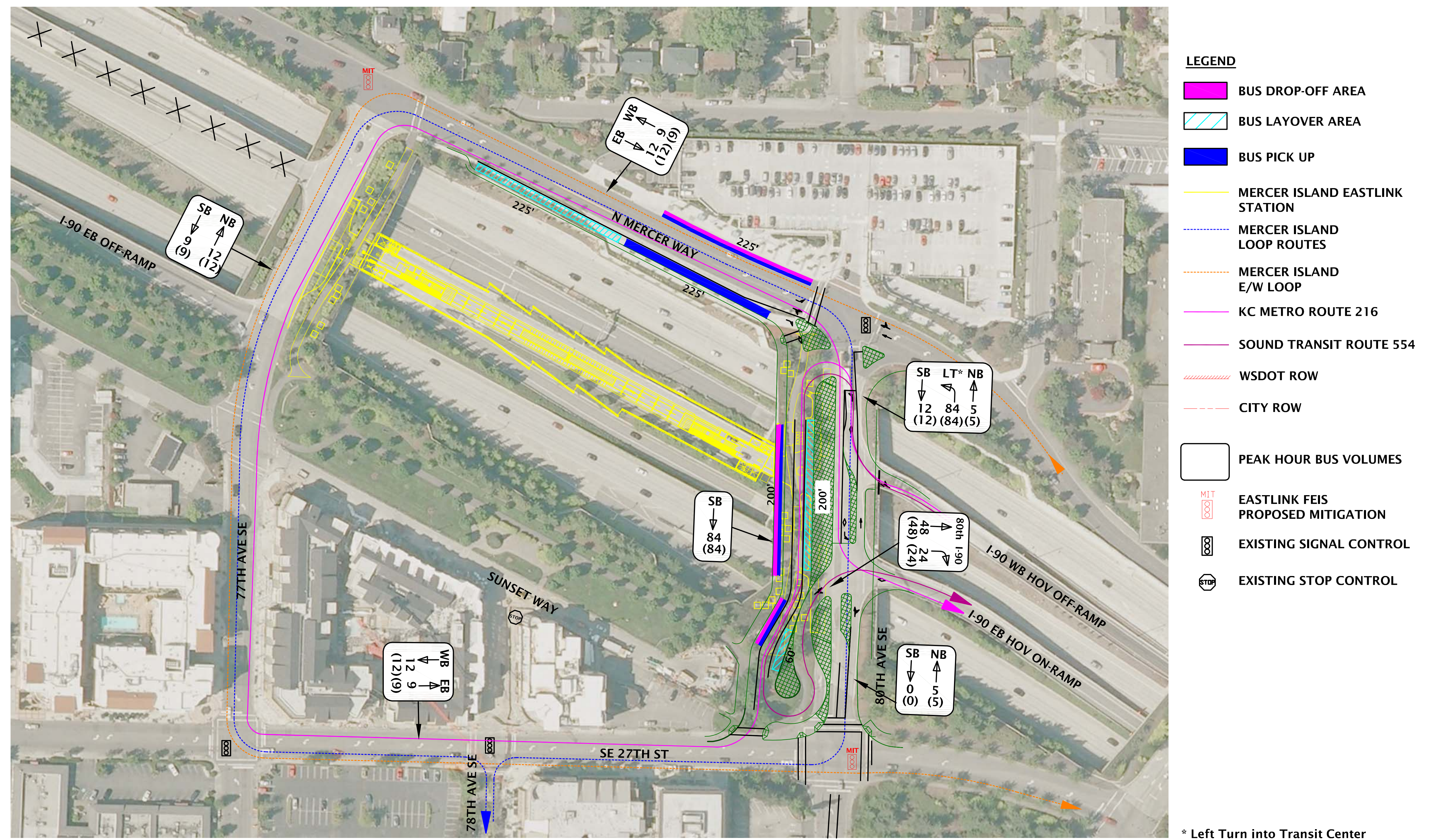
INTEGRATED TRANSIT SERVICE ON MERCER ISLAND

EAST LINK EXTENSION

Since July, The City of Mercer Island, Sound Transit, WSDOT and King County Metro have reviewed public feedback and developed a new scenario with these benefits:

- Does not impact local property owners
- Accommodates future growth of bus service
- Offers transit riders the shortest walking distance between bus and light rail service

This option comprises of a bus operating scheme within an isolated transit facility. The majority of buses would remain in the facility and not circulate on Mercer Island streets. The buses would access I-90 using the HOV ramps.



EASTLINK BUS/RAIL SYSTEMS INTEGRATION STUDY
80th Ave SE Transit Center Design Option

