

North Link – Northgate Station

Open House

May 17, 2011



Tonight's Agenda

- 6:00 pm - Open House
- 6:30 pm - Presentation
 - **Welcome/introductions** –
Ron Endlich, North Link Deputy Project Director
 - **North Link and Northgate Station Overview**
Fred Wilhelm, Sound Transit Project Manager
 - **Northgate Bus Facilities and HUD Planning Grant Update**
Gary Prince, KCM Project Manager
 - **North Link Schedule/Next Steps**
 - **Questions and Answers**
- 7:45 pm - Return to Open House
- 8:30 pm - Close





Link Light Rail System

- 16 miles of light rail with 13 stations currently in service
- University Link under construction; opens 2016
- ST2 Plan funded extensions to Overlake, Lynnwood, and Federal Way
- 54 mile system

North Link Overview

- 3.3 miles twin-bore tunnels
- 1.0 miles at-grade and elevated structures from NE 85th to Northgate
- Underground stations at Brooklyn and Roosevelt
- Elevated station at Northgate
- Adds 62,000 daily boardings (2030)
- Revenue service in 2020 or 2021
- ST2 Estimate - \$1.35 B (2010 \$'s)



Northgate Project Background



2006 Preliminary
Engineering/FSEIS Completed



2008 Voter Approved ST 2
Plan



2009 Value Engineering

North Link – Tunnel Portal to Northgate Station



North Portal



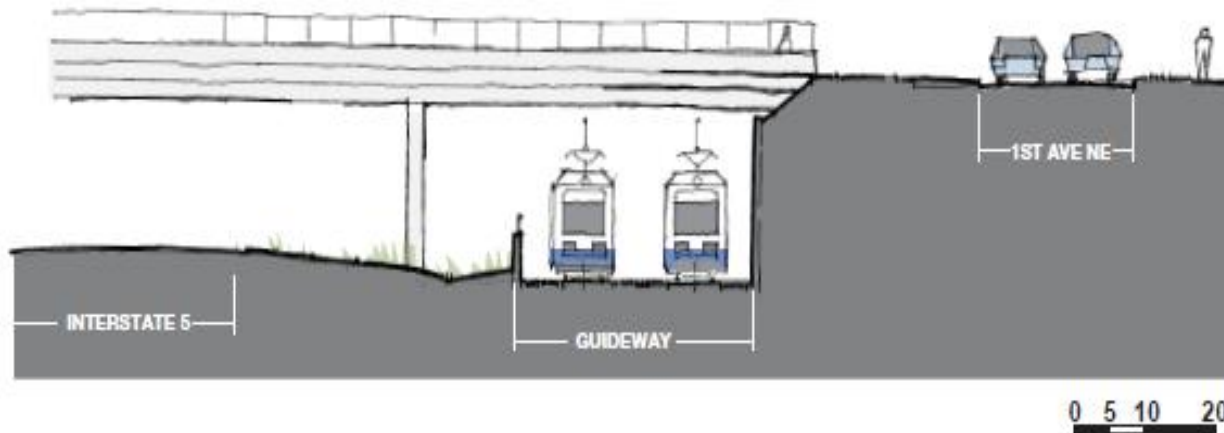
Tunnel Portal



Retained Cut



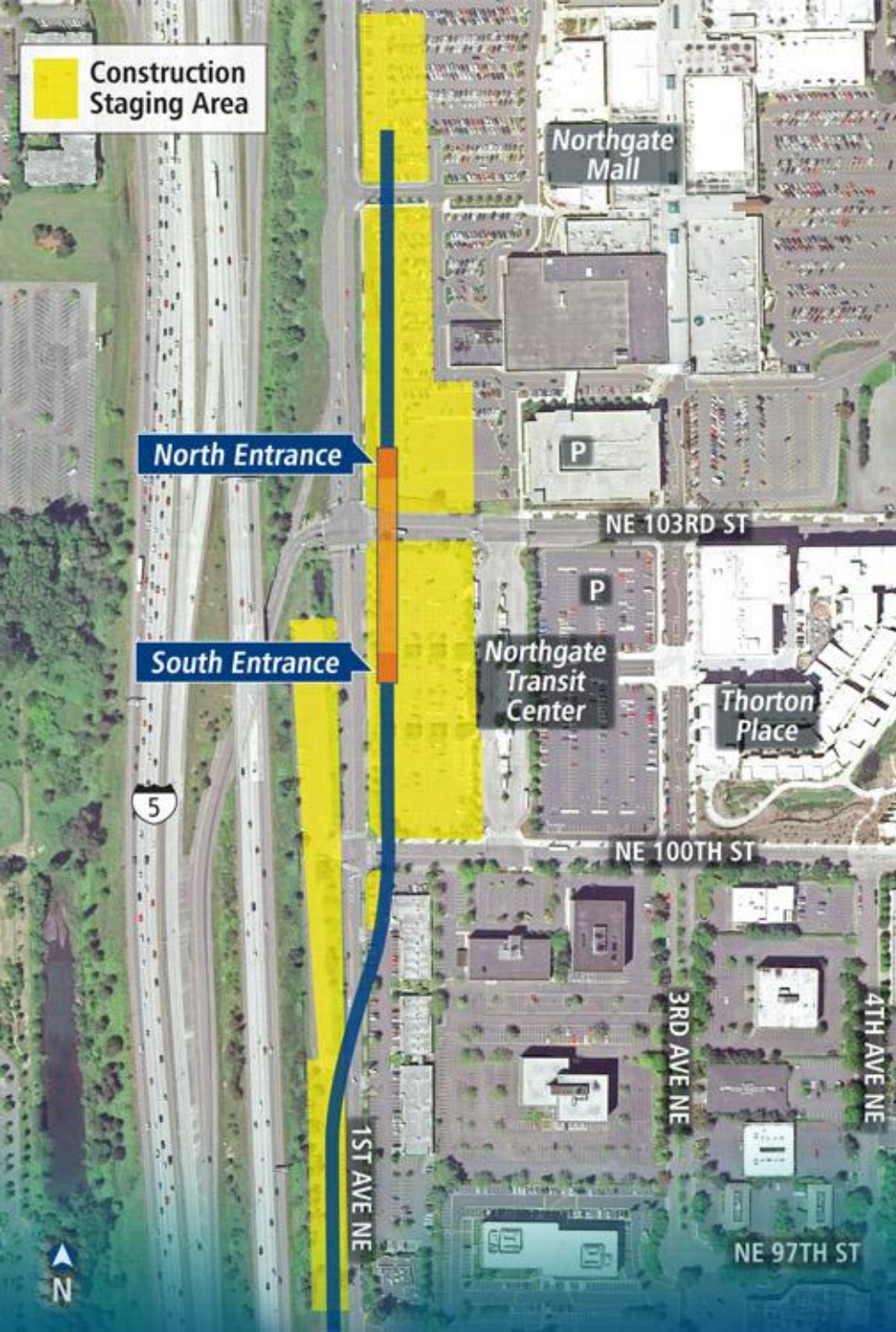
Crossing Under the 92nd Street Bridge



**SECTION 2 LOOKING NORTH
RETAINED CUT AT NE 92ND ST OVERPASS**

Elevated Guideway





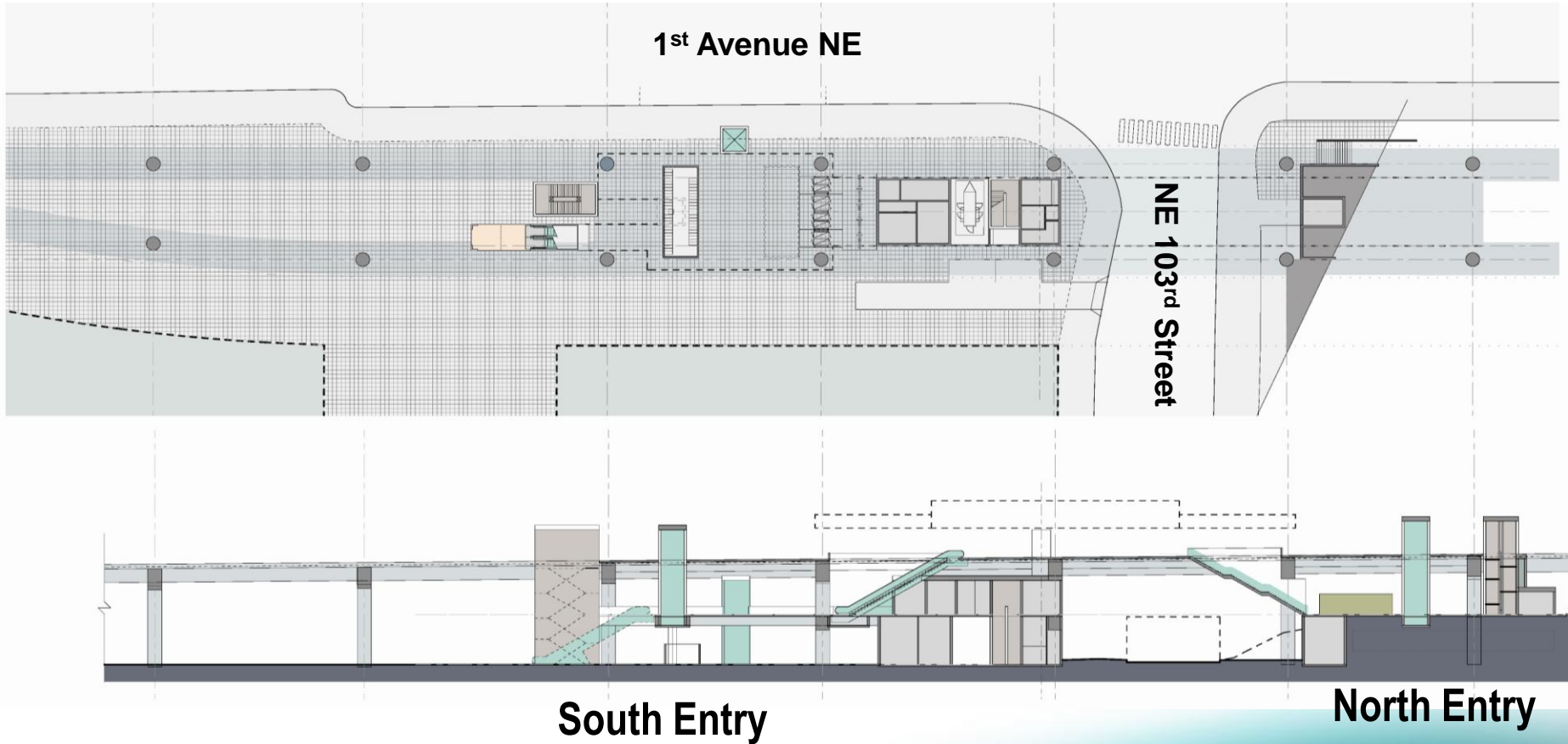
Northgate Station

Key features:

- Elevated station spans NE 103rd St.
- 25' - 45' high with escalators, elevators and stairs
- North entrance connects Mall
- South entrance connects to buses and park-and ride lots
- Bicycle parking
- 15,000 daily boardings (2030)

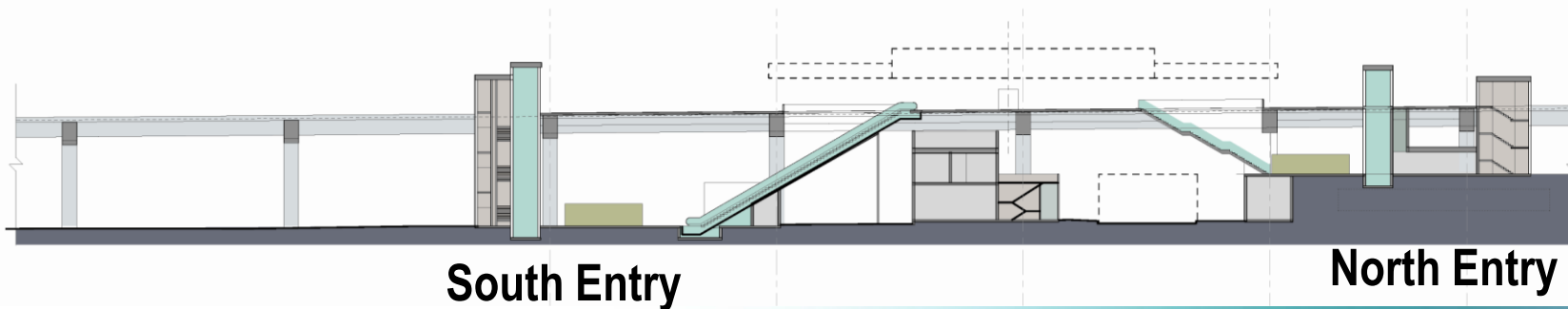
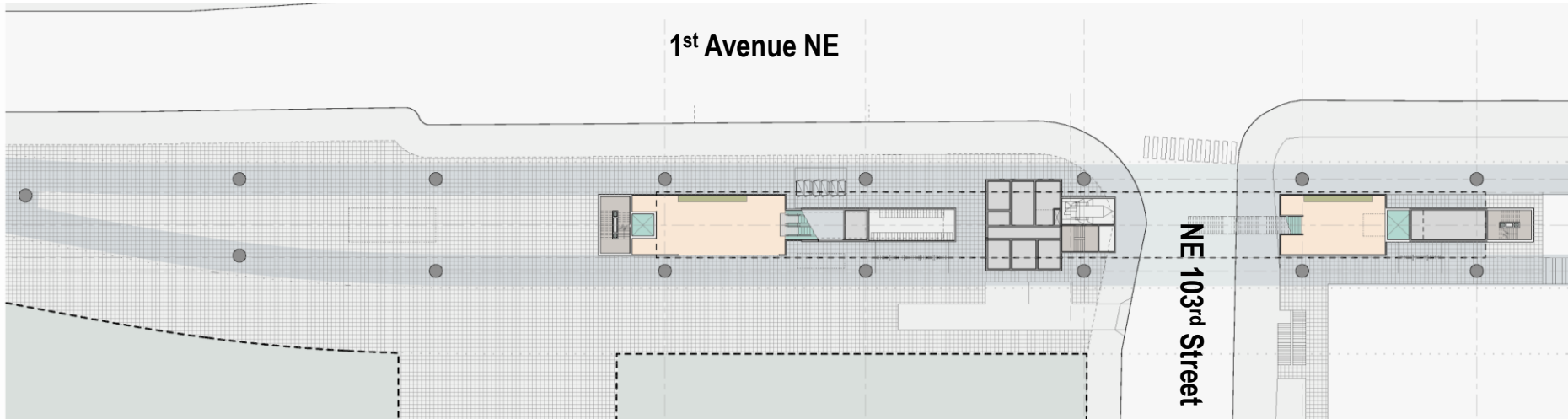
Station Concept – Alternative 1

Mezzanine



Station Concept – Alternative 2

No Mezzanine





Northgate Station

Current status:

- Team from ST, KCM and SDOT working on rail station, bus facility and access issues
- Integrated design options continue to be developed, refined
- 15% conceptual design complete

Northgate: An Important Transit Hub Now and in the Future

NORTHGATE TRANSIT CENTER



LOCATION	ROUTES	PARKING
10200 1st Ave NE Seattle, WA 98125	5, 16, 41, 66, 67, 68, 75, 242, 303, 345, 346, 347, 348, 995	856 spaces

DAILY RIDERSHIP



TOTAL = 30,800



Current Environment



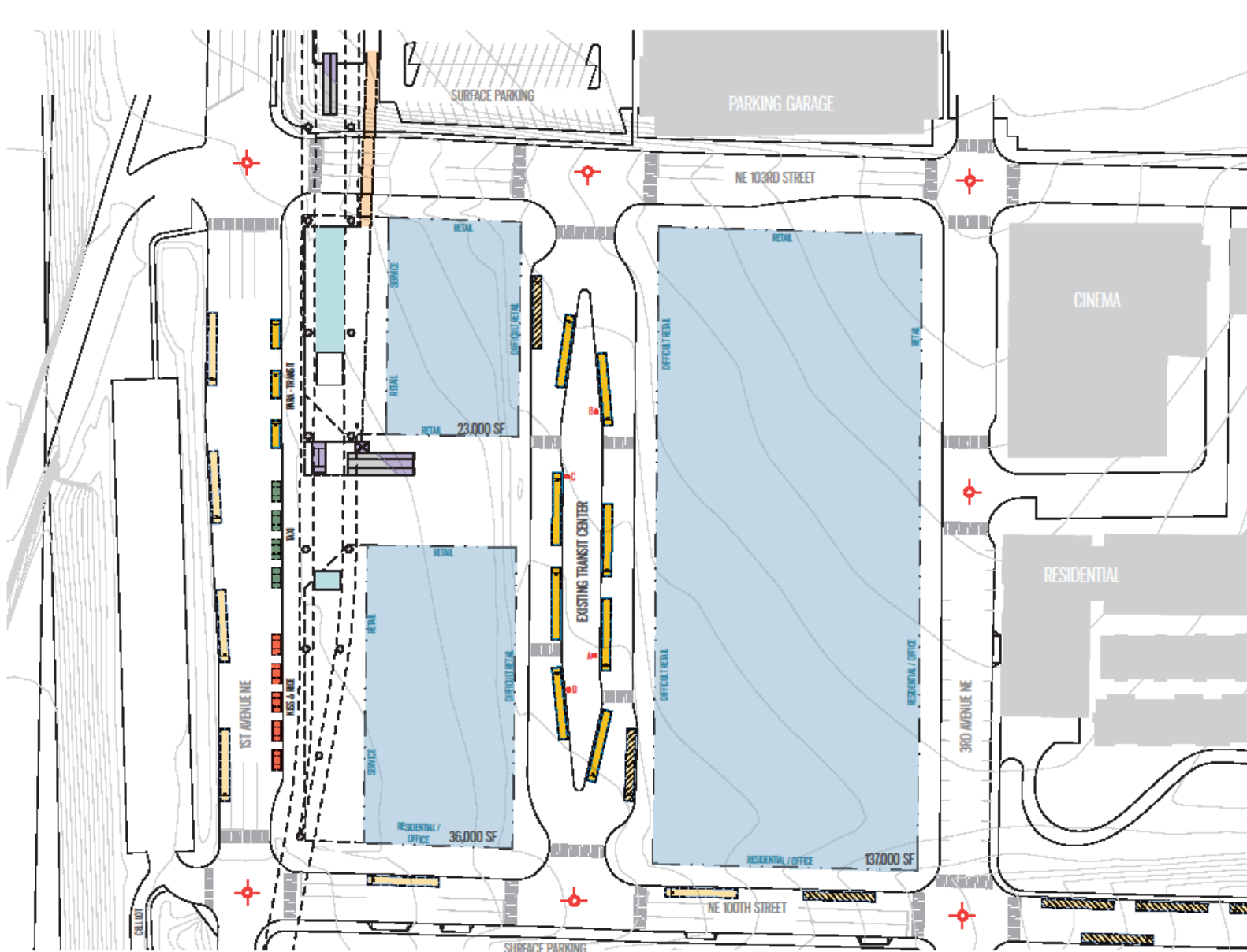
HUD Grant: Looking to the Future



King County

Existing Bus Facility + ST Station

ALT 1



King County

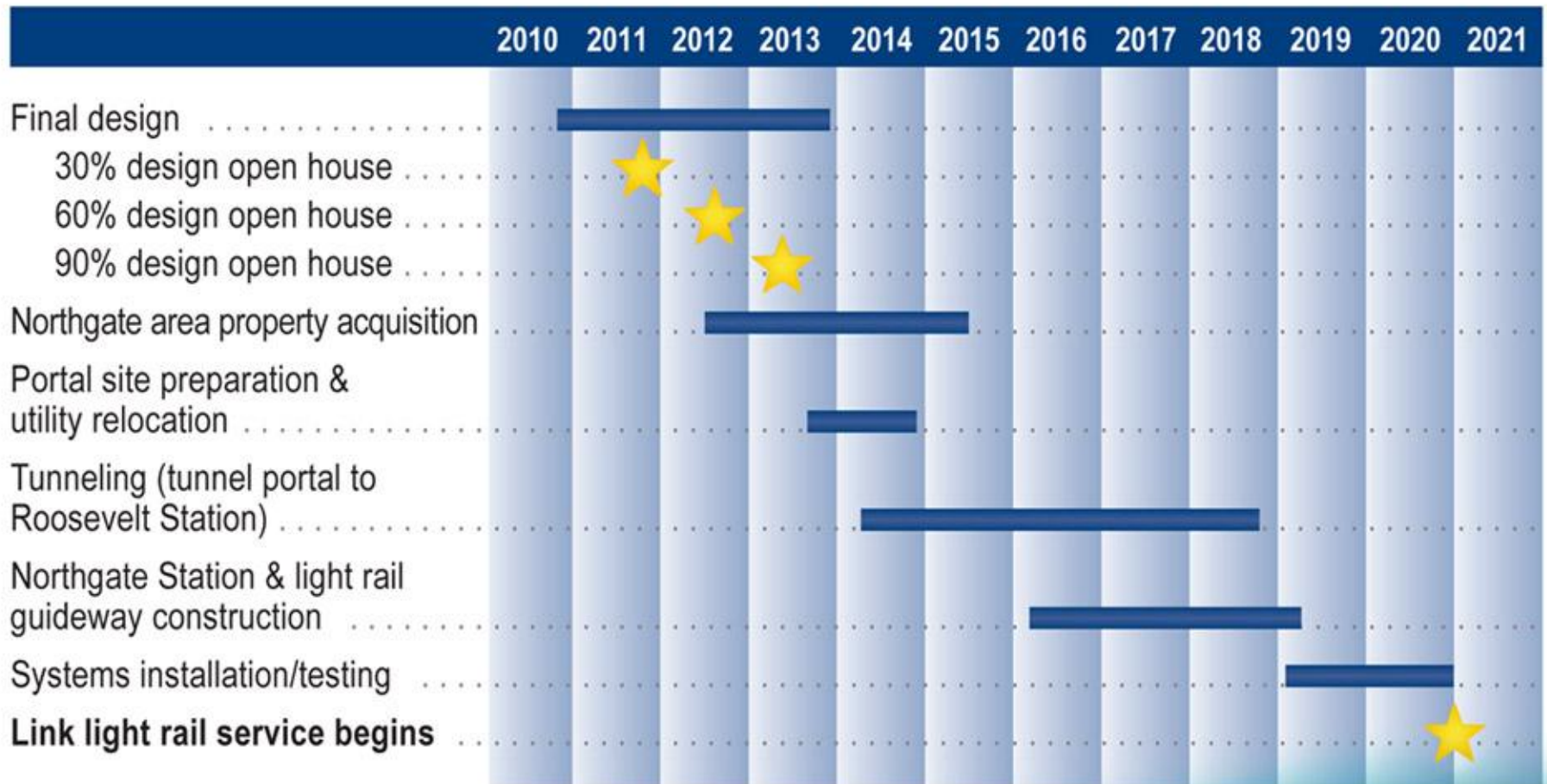


0 20 40 60
SCALE - METERS

NORTHGATE
URBAN DEVELOPMENT
5.17.2011

VIA ARCHITECTURE

Northgate Station Project Schedule



Next Steps

- Final Design
 - Finalize Alignment
 - Northgate Station 30% Design – Fall 2011
 - Public Art
- Agency Coordination
 - King County Metro
 - WSDOT
 - City of Seattle

Questions?



Get Involved & Stay Informed

- Attend final design open houses
 - ✓ Learn more about your neighborhood station's design including bike facilities, pedestrian and bus connections and public art
- Sign up to receive e-mail updates:
www.soundtransit.org/subscribe
- Sound Transit Web site:
www.soundtransit.org/northlink
- Contact Ellen Blair: 206-398-5043
northlink@soundtransit.org

