

Attachment N.3A
Noise Measurement Data, Site Details, and
Photographs

This page is intentionally left blank.

Attachment N.3A

Noise Measurement Data, Site Details, and Photographs

This attachment presents a data summary form for each noise monitoring location. Forms include the location, noise measurement equipment used, measurement data, weather observed during monitoring, and photographs of the site.

N.3A.1 Short-Term Noise Measurements

Monitoring Location

Monitoring No.	ST-1
Address	4500 39th Avenue Southwest
Area	West Seattle Junction
Parcel	095200-7350

Equipment

Equipment Type	Model Number	Serial Number
Level Analyzer	Svantek 971	51818
Microphone	ACO Pacific 7052E	62522
Preamplifier	Svantek SV18	49561
Calibrator	Larson Davis CAL200	9512

Measurement Data

Date	Period ^a	Start Time	End Time	Leq dBA ^b	Ldn dBA ^c
August 22, 2019	Morning	8:55 a.m.	9:25 p.m.	57.1	55.4
August 26, 2019	Afternoon	4:32 p.m.	5:02 p.m.	57.7	55.4

^a Morning is 7 a.m. to 12 p.m.; Afternoon is 12 p.m. to 7 p.m.; Evening is 7 p.m. to 10 p.m.; Night is 10 p.m. to 7 a.m.

^b Peak Hour Leq dBA sound level.

^c Day-Night Average Sound Level Ldn dBA. Parks do not have a Ldn sound level because there is no nighttime use.

dBA = A-weighted decibels

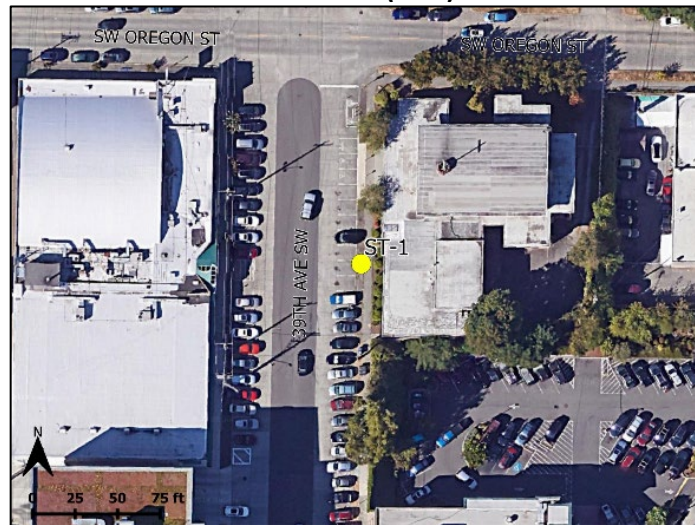
Ldn = day-night equivalent sound level

Leq = equivalent sound level

Weather

Date	Period	Temperature	Pressure	Wind Speed	Wind Direction
August 22, 2019	Morning	59 degrees Fahrenheit	30.1 inches	5 miles per hour	South-southwest
August 26, 2019	Afternoon	76 degrees Fahrenheit	30.1 inches	9 miles per hour	Northwest

Plan View (ST-1)



Looking North (ST-1)



Looking South (ST-1)



Looking East (ST-1)



Looking West (ST-1)



Monitoring Location

Monitoring No.	ST-2
Address	4530 38th Southwest Avenue
Area	West Seattle Junction
Parcel	095200-7660

Equipment

Equipment Type	Model Number	Serial Number
Level Analyzer	Svantek 971	51818
Microphone	ACO Pacific 7052E	62522
Preamplifier	Svantek SV18	49561
Calibrator	Larson Davis CAL200	9512

Measurement Data

Date	Period ^a	Start Time	End Time	Leq dBA ^b	Ldn dBA ^c
August 22, 2019	Morning	8:06 a.m.	8:36 a.m.	68.8	66.8
August 26, 2019	Afternoon	3:55 p.m.	4:25 p.m.	68.8	66.8

^a Morning is 7 a.m. to 12 p.m.; Afternoon is 12 p.m. to 7 p.m.; Evening is 7 p.m. to 10 p.m.; Night is 10 p.m. to 7 a.m.

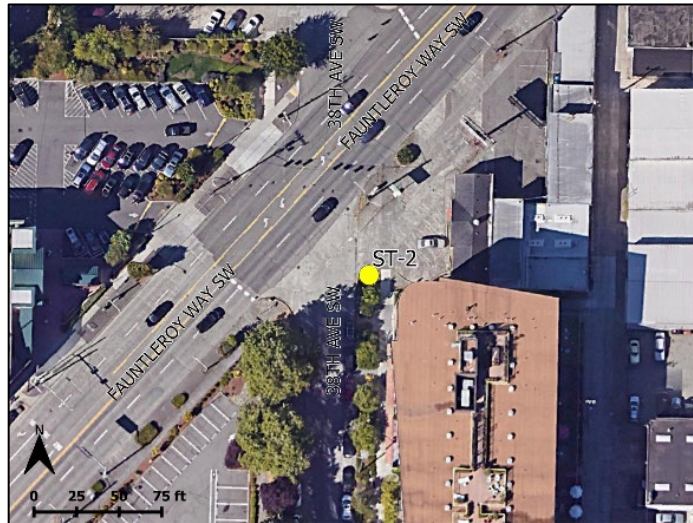
^b Peak Hour Leq dBA sound level.

^c Day-Night Average Sound Level Ldn dBA. Parks do not have a Ldn sound level because there is no nighttime use.

Weather

Date	Period	Temperature	Pressure	Wind Speed	Wind Direction
August 22, 2019	Morning	58 degrees Fahrenheit	30.1 inches	7 miles per hour	Southeast
August 26, 2019	Afternoon	76 degrees Fahrenheit	30.1 inches	13 miles per hour	Northwest

Plan View (ST-2)



Looking North (ST-2)



Looking South (ST-2)



Looking East (ST-2)



Looking West (ST-2)



Monitoring Location

Monitoring No.	ST-3
Address	4470 35th Avenue Southwest
Area	Delridge
Parcel	132403-9014

Equipment

Equipment Type	Model Number	Serial Number
Level Analyzer	Svantek 971	72542
Microphone	ACO Pacific 7052E	68284
Preamplifier	Svantek SV18	72239
Calibrator	Larson Davis CAL200	16827

Measurement Data

Date	Period ^a	Start Time	End Time	Leq dBA ^b	Ldn dBA ^c
August 22, 2019	Morning	7:47 a.m.	8:17 a.m.	69.5	66.9
August 22, 2019	Afternoon	5:36 p.m.	6:06 p.m.	68.2	66.9

^a Morning is 7 a.m. to 12 p.m.; Afternoon is 12 p.m. to 7 p.m.; Evening is 7 p.m. to 10 p.m.; Night is 10 p.m. to 7 a.m.

^b Peak Hour Leq dBA sound level.

^c Day-Night Average Sound Level Ldn dBA. Parks do not have a Ldn sound level because there is no nighttime use.

Weather

Date	Period	Temperature	Pressure	Wind Speed	Wind Direction
August 22, 2019	Morning	58 degrees Fahrenheit	30.1 inches	4 miles per hour	South
August 22, 2019	Afternoon	76 degrees Fahrenheit	30.1 inches	4 miles per hour	South

Plan View (ST-3)



Looking North (ST-3)



Looking South (ST-3)



Looking East (ST-3)



Looking West (ST-3)



Monitoring Location

Monitoring No.	ST-4
Address	Longfellow Creek Legacy Trail
Area	Delridge
Parcel	935800-1220

Equipment

Equipment Type	Model Number	Serial Number
Level Analyzer	Svantek 971	72542
Microphone	ACO Pacific 7052E	68284
Preamplifier	Svantek SV18	72239
Calibrator	Larson Davis CAL200	16827

Measurement Data

Date	Period ^a	Start Time	End Time	Leq dBA ^b	Ldn dBA ^c
August 22, 2019	Morning	8:27 a.m.	8:57 a.m.	47.2	Not Applicable
August 23, 2019	Afternoon	6:15 p.m.	6:45 p.m.	44.6	Not Applicable

^a Morning is 7 a.m. to 12 p.m.; Afternoon is 12 p.m. to 7 p.m.; Evening is 7 p.m. to 10 p.m.; Night is 10 p.m. to 7 a.m.

^b Peak Hour Leq dBA sound level.

^c Day-Night Average Sound Level Ldn dBA. Parks do not have a Ldn sound level because there is no nighttime use.

Weather

Date	Period	Temperature	Pressure	Wind Speed	Wind Direction
August 22, 2019	Morning	59 degrees Fahrenheit	30.1 inches	4 miles per hour	South
August 23, 2019	Afternoon	75 degrees Fahrenheit	30.0 inches	1 mile per hour	South

Plan View (ST-4)



Looking North (ST-4)



Looking South (ST-4)



Looking East (ST-4)



Looking West (ST-4)



Monitoring Location

Monitoring No.	ST-5
Address	4501 Delridge Way Southwest
Area	Delridge
Parcel	132403-9030

Equipment

Equipment Type	Model Number	Serial Number
Level Analyzer	Svantek 979	46177
Microphone	GRAS 40AE	258193
Preamplifier	Svantek SV17	57824
Calibrator	Larson Davis CAL200	16828

Measurement Data

Date	Period ^a	Start Time	End Time	Leq dBA ^b	Ldn dBA ^c
August 22, 2019	Morning	7:42 a.m.	8:12 a.m.	74.2	69.3
August 26, 2019	Afternoon	4:07 p.m.	4:37 p.m.	56.1	69.3

^a Morning is 7 a.m. to 12 p.m.; Afternoon is 12 p.m. to 7 p.m.; Evening is 7 p.m. to 10 p.m.; Night is 10 p.m. to 7 a.m.

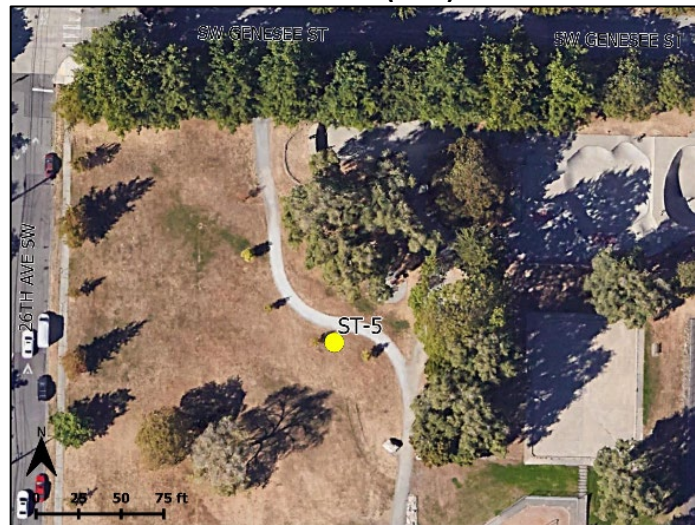
^b Peak Hour Leq dBA sound level.

^c Day-Night Average Sound Level Ldn dBA. Parks do not have a Ldn sound level because there is no nighttime use.

Weather

Date	Period	Temperature	Pressure	Wind Speed	Wind Direction
August 22, 2019	Morning	56 degrees Fahrenheit	30.1 inches	4 miles per hour	South
August 26, 2019	Afternoon	74 degrees Fahrenheit	30.1 inches	11 miles per hour	North

Plan View (ST-5)



Looking North (ST-5)



Looking South (ST-5)



Looking East (ST-5)



Looking West (ST-5)



Monitoring Location

Monitoring No.	ST-6
Address	4408 Delridge Way Southwest
Area	Delridge
Parcel	338812-0000

Equipment

Equipment Type	Model Number	Serial Number
Level Analyzer	Svantek 979	46177
Microphone	GRAS 40AE	258193
Preamplifier	Svantek SV17	57824
Calibrator	Larson Davis CAL200	16828

Measurement Data

Date	Period ^a	Start Time	End Time	Leq dBA ^b	Ldn dBA ^c
August 22, 2019	Morning	8:42 a.m.	9:12 a.m.	73.5	71.7
August 26, 2019	Afternoon	4:43 p.m.	5:13 p.m.	73.9	71.7

^a Morning is 7 a.m. to 12 p.m.; Afternoon is 12 p.m. to 7 p.m.; Evening is 7 p.m. to 10 p.m.; Night is 10 p.m. to 7 a.m.

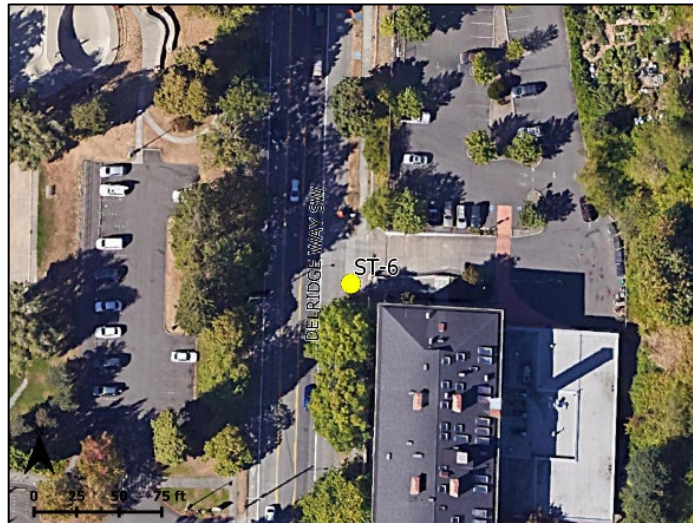
^b Peak Hour Leq dBA sound level.

^c Day-Night Average Sound Level Ldn dBA. Parks do not have a Ldn sound level because there is no nighttime use.

Weather

Date	Period	Temperature	Pressure	Wind Speed	Wind Direction
August 22, 2019	Morning	56 degrees Fahrenheit	30.1 inches	4 miles per hour	South
August 26, 2019	Afternoon	74 degrees Fahrenheit	30.1 inches	10 miles per hour	North

Plan View (ST-6)



Looking North (ST-6)



Looking South (ST-6)



Looking East (ST-6)



Looking West (ST-6)



Monitoring Location

Monitoring No.	ST-7
Address	1011 Southwest Klickitat Avenue
Area	Delridge
Parcel	766670-1220

Equipment

Equipment Type	Model Number	Serial Number
Level Analyzer	Svantek 971	72542
Microphone	ACO Pacific 7052E	68284
Preamplifier	Svantek SV18	72239
Calibrator	Larson Davis CAL200	16827

Measurement Data

Date	Period ^a	Start Time	End Time	Leq dBA ^b	Ldn dBA ^c
August 22, 2019	Morning	9:21 a.m.	9:51 a.m.	59.4	59.3
August 26, 2019	Afternoon	5:32 p.m.	6:02 p.m.	62.6	59.3

^a Morning is 7 a.m. to 12 p.m.; Afternoon is 12 p.m. to 7 p.m.; Evening is 7 p.m. to 10 p.m.; Night is 10 p.m. to 7 a.m.

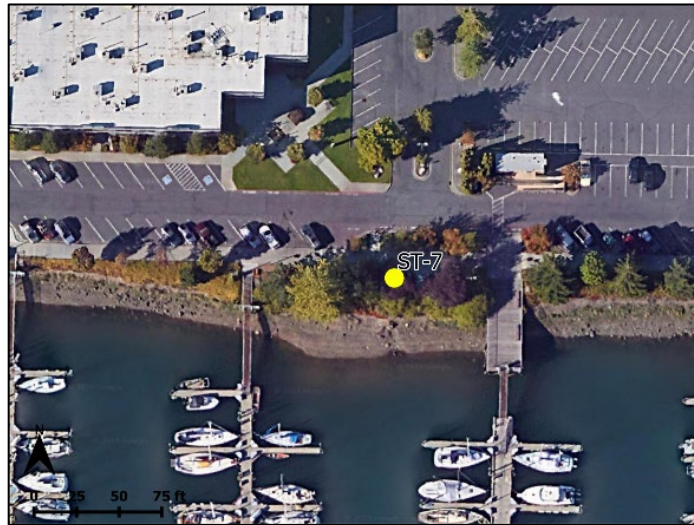
^b Peak Hour Leq dBA sound level.

^c Day-Night Average Sound Level Ldn dBA. Parks do not have a Ldn sound level because there is no nighttime use.

Weather

Date	Period	Temperature	Pressure	Wind Speed	Wind Direction
August 22, 2019	Morning	60 degrees Fahrenheit	30.1 inches	3 miles per hour	South
August 26, 2019	Afternoon	74 degrees Fahrenheit	30.1 inches	10 miles per hour	North

Plan View (ST-7)



Looking North (ST-7)



Looking South (ST-7)



Looking East (ST-7)



Looking West (ST-7)



Monitoring Location

Monitoring No.	ST-8
Address	Longfellow Creek Natural Area – Dragon Fly Park North Meter
Segment	Delridge
Parcel	9358001220

Equipment

Equipment Type	Model Number	Serial Number
Level Analyzer	Bruel and Kjaer 2238	2664578
Microphone	Bruel and Kjaer 4188	2200802
Preamplifier	Bruel and Kjaer	Not Applicable
Calibrator	Larson Davis CAL200	16513

Measurement Data

Date	Period ^a	Start Time	End Time	Leq dBA ^b	Ldn dBA ^c
January 24, 2023	Morning	8:16 a.m.	8:46 a.m.	60	Not Applicable
January 24, 2023	Afternoon	12:07 p.m.	12:37 p.m.	54	Not Applicable
January 27, 2023	Morning	8:58 a.m.	9:28 a.m.	57	Not Applicable
February 1, 2023	Afternoon	7:10 p.m.	7:40 p.m.	54	Not Applicable

^a Morning is 7 a.m. to 12 p.m.; Afternoon is 12 p.m. to 7 p.m.; Evening is 7 p.m. to 10 p.m.; Night is 10 p.m. to 7 a.m.

^b Peak Hour Leq dBA sound level.

^c Day-Night Average Sound Level Ldn dBA. Parks do not have a Ldn sound level because there is no nighttime use.

Weather

Date	Period	Temperature	Pressure	Wind Speed	Wind Direction
January 24, 2023	Morning	38 degrees Fahrenheit	30.0 inches	7 miles per hour	South-southeast
January 24, 2023	Afternoon	42 degrees Fahrenheit	30.1 inches	6 miles per hour	South-southeast
January 27, 2023	Morning	45 degrees Fahrenheit	29.7 inches	6 miles per hour	North
February 1, 2023	Afternoon	43 degrees Fahrenheit	29.7 inches	0 miles per hour	Calm

Plan View (ST-8)



Looking North (ST-8)



Looking South (ST-4)



Looking East (ST-8)



Looking West (ST-8)



Monitoring Location

Monitoring No.	ST-9
Address	Longfellow Creek Natural Area – Dragon Fly Park South Meter
Segment	Delridge
Parcel	9358001220

Equipment

Equipment Type	Model Number	Serial Number
Level Analyzer	Bruel and Kjaer 2238	2664578
Microphone	Bruel and Kjaer 4188	2200802
Preamplifier	Bruel and Kjaer	Not Applicable
Calibrator	Larson Davis CAL200	16513

Measurement Data

Date	Period ^a	Start Time	End Time	Leq dBA ^b	Ldn dBA ^c
January 24, 2023	Morning	8:18 a.m.	8:48 a.m.	59	Not Applicable
January 24, 2023	Afternoon	12:09 p.m.	12:39 p.m.	53	Not Applicable
January 27, 2023	Morning	9 a.m.	9:30 a.m.	57	Not Applicable

^a Morning is 7 a.m. to 12 p.m.; Afternoon is 12 p.m. to 7 p.m.; Evening is 7 p.m. to 10 p.m.; Night is 10 p.m. to 7 a.m.

^b Peak Hour Leq dBA Sound Level

^c Day-Night Average Sound Level Ldn dBA. Parks do not have a Ldn sound level because there is no nighttime use.

Weather

Date	Period	Temperature	Pressure	Wind Speed	Wind Direction
January 24, 2023	Morning	38 degrees Fahrenheit	30.1 inches	7 miles per hour	South-southeast
January 24, 2023	Afternoon	42 degrees Fahrenheit	30.1 inches	6 miles per hour	South-southeast
January 27, 2023	Morning	45 degrees Fahrenheit	29.7 inches	6 miles per hour	North

Plan View (ST-9)



Looking North (ST-9)



Looking South (ST-9)



Looking East (ST-9)



Looking West (ST-9)



Monitoring Location

Monitoring No.	ST-10
Address	2819 Southwest Dakota Street
Segment	Delridge
Parcel	9358001269

Equipment

Equipment Type	Model Number	Serial Number
Level Analyzer	Bruel and Kjaer 2238	2664578
Microphone	Bruel and Kjaer 4188	2200802
Preamplifier	Bruel and Kjaer	Not Applicable
Calibrator	Larson Davis CAL200	16513

Measurement Data

Date	Period ^a	Start Time	End Time	Leq dBA ^b	Ldn dBA ^c
January 24, 2023	Morning	8:53 a.m.	9:23 a.m.	60	58
January 24, 2023	Afternoon	12:43 p.m.	1:13 p.m.	52	54
January 27, 2023	Morning	9:45 a.m.	10:15 p.m.	56	50
February 1, 2023	Afternoon	6:36 p.m.	7:06 p.m.	53	51

^a Morning is 7 a.m. to 12 p.m.; Afternoon is 12 p.m. to 7 p.m.; Evening is 7 p.m. to 10 p.m.; Night is 10 p.m. to 7 a.m.

^b Peak Hour Leq dBA sound level.

^c Day-Night Average Sound Level Ldn dBA. Parks do not have a Ldn sound level because there is no nighttime use.

Weather

Date	Period	Temperature	Pressure	Wind Speed	Wind Direction
January 24, 2023	Morning	40 degrees Fahrenheit	30.1 inches	10 miles per hour	South-southeast
January 24, 2023	Afternoon	41 degrees Fahrenheit	30.1 inches	8 miles per hour	Southeast
January 27, 2023	Morning	45 degrees Fahrenheit	29.8 inches	12 miles per hour	North-northwest
February 1, 2023	Evening	43 degrees Fahrenheit	29.7 inches	0 miles per hour	Calm

Plan View (ST-10)



Looking North (ST-10)



Looking South (ST-10)



Looking East (ST-10)



Looking West (ST-10)



Monitoring Location

Monitoring No.	ST-11
Address	2851 Southwest Dakota Street
Segment	Delridge
Parcel	9358001345

Equipment

Equipment Type	Model Number	Serial Number
Level Analyzer	Bruel and Kjaer 2238	2664578
Microphone	Bruel and Kjaer 4188	2200802
Preamplifier	Bruel and Kjaer	Not Applicable
Calibrator	Larson Davis CAL200	16513

Measurement Data

Date	Period ^a	Start Time	End Time	Leq dBA ^b	Ldn dBA ^c
January 24, 2023	Morning	9:32 a.m.	9:59 a.m.	57	55
January 24, 2023	Afternoon	1:17 p.m.	1:47 p.m.	56	56
January 27, 2023	Morning	10:20 a.m.	10:50 a.m.	58	54
February 1, 2023	Afternoon	6:00 p.m.	6:30 p.m.	54	52

^a Morning is 7 a.m. to 12 p.m.; Afternoon is 12 p.m. to 7 p.m.; Evening is 7 p.m. to 10 p.m.; Night is 10 p.m. to 7 a.m.

^b Peak Hour Leq dBA sound level.

^c Day-Night Average Sound Level Ldn dBA. Parks do not have a Ldn sound level because there is no nighttime use.

Weather

Date	Period	Temperature	Pressure	Wind Speed	Wind Direction
January 24, 2023	Morning	40 degrees Fahrenheit	30.1 inches	7 miles per hour	South-southeast
January 24, 2023	Afternoon	42 degrees Fahrenheit	30.1 inches	8 miles per hour	Southeast
January 27, 2023	Morning	45 degrees Fahrenheit	29.8 inches	7 miles per hour	North-northwest
February 1, 2023	Afternoon	46 degrees Fahrenheit	29.7 inches	0 miles per hour	Calm

Plan View (ST-11)



Looking North (ST-11)



Looking South (ST-11)



Looking East (ST-11)



Looking West (ST-11)



Monitoring Location

Monitoring No.	ST-12
Address	4104 Southwest 32nd Avenue
Segment	Delridge
Parcel	9297301029

Equipment

Equipment Type	Model Number	Serial Number
Level Analyzer	Bruel and Kjaer 2238	2664578
Microphone	Bruel and Kjaer 4188	2200802
Preamplifier	Bruel and Kjaer	Not Applicable
Calibrator	Larson Davis CAL200	16513

Measurement Data

Date	Period ^a	Start Time	End Time	Leq dBA ^b	Ldn dBA ^c
January 24, 2023	Morning	10:13 a.m.	10:43 a.m.	52	50
January 24, 2023	Afternoon	1:53 p.m.	2:23 p.m.	53	54
January 27, 2023	Morning	11:05 a.m.	11:35 a.m.	56	51
February 1, 2023	Afternoon	5:21 p.m.	5:51 p.m.	54	52

^a Morning is 7 a.m. to 12 p.m.; Afternoon is 12 p.m. to 7 p.m.; Evening is 7 p.m. to 10 p.m.; Night is 10 p.m. to 7 a.m.

^b Peak Hour Leq dBA sound level.

^c Day-Night Average Sound Level Ldn dBA. Parks do not have a Ldn sound level because there is no nighttime use.

Weather

Date	Period	Temperature	Pressure	Wind Speed	Wind Direction
January 24, 2023	Morning	40 degrees Fahrenheit	30.1 inches	9 miles per hour	South
January 24, 2023	Afternoon	42 degrees Fahrenheit	30.1 inches	8 miles per hour	Southeast
January 27, 2023	Morning	45 degrees Fahrenheit	29.8 inches	7 miles per hour	North-northwest
February 1, 2023	Afternoon	46 degrees Fahrenheit	29.7 inches	0 miles per hour	Calm

Plan View (ST-12)



Looking North (ST-12)



Looking South (ST-12)



Looking East (ST-12)



Looking West (ST-12)



Monitoring Location

Monitoring No.	ST-13
Address	4065 26th Avenue Southwest
Segment	Delridge
Parcel	9358000970

Equipment

Equipment Type	Model Number	Serial Number
Level Analyzer	Svantek 971	51818/72542
Microphone	ACO Pacific 7052E	62522/68284
Preamplifier	Svantek SV18	49561/72239
Calibrator	Larson Davis CAL200	9512/16827

Measurement Data

Date	Period ^a	Start Time	End Time	Leq dBA ^b	Ldn dBA ^c
06/08/2023	Morning	8:03 a.m.	8:33 a.m.	55	62
06/13/2023	Evening	8:08 p.m.	8:38 p.m.	49	62

^a Morning is 7 a.m. to 12 p.m.; Afternoon is 12 p.m. to 7 p.m.; Evening is 7 p.m. to 10 p.m.; Night is 10 p.m. to 7 a.m.

^b Peak Hour Leq dBA sound level.

^c Day-Night Average Sound Level Ldn dBA. Parks do not have a Ldn sound level because there is no nighttime use.

Weather

Date	Period	Temperature	Pressure	Wind Speed	Wind Direction
06/08/2023	Morning	62 degrees Fahrenheit	30.0 inches	5 miles per hour	South-southeast
06/13/2023	Evening	64 degrees Fahrenheit	30.0 inches	7 miles per hour	South

Plan View (ST-13)



Looking North (ST-13)



Looking South (ST-13)



Looking East (ST-13)



Looking West (ST-13)



Monitoring Location

Monitoring No.	ST-14
Address	2623 Southwest Yancy Street
Segment	Delridge
Parcel	9358000780

Equipment

Equipment Type	Model Number	Serial Number
Level Analyzer	Svantek 971	51818/72542
Microphone	ACO Pacific 7052E	62522/68284
Preamplifier	Svantek SV18	49561/72239
Calibrator	Larson Davis CAL200	9512/16827

Measurement Data

Date	Period ^a	Start Time	End Time	Leq dBA ^b	Ldn dBA ^c
06/08/2023	Morning	8:35 a.m.	9:05 a.m.	58	64
06/13/2023	Evening	7:30 p.m.	8:00 p.m.	48	64

^a Morning is 7 a.m. to 12 p.m.; Afternoon is 12 p.m. to 7 p.m.; Evening is 7 p.m. to 10 p.m.; Night is 10 p.m. to 7 a.m.

^b Peak Hour Leq dBA sound level.

^c Day-Night Average Sound Level Ldn dBA. Parks do not have a Ldn sound level because there is no nighttime use.

Weather

Date	Period	Temperature	Pressure	Wind Speed	Wind Direction
06/08/2023	Morning	62 degrees Fahrenheit	30.0 inches	5 miles per hour	South-southeast
06/13/2023	Evening	64 degrees Fahrenheit	30.0 inches	7 miles per hour	South

Plan View (ST-14)



Looking North (ST-14)



Looking South (ST-14)



Looking East (ST-14)



Looking West (ST-14)



Monitoring Location

Monitoring No.	ST-15
Address	3711 19th Avenue Southwest
Segment	Duwamish
Parcel	9349900170

Equipment

Equipment Type	Model Number	Serial Number
Level Analyzer	Svantek 971	51818
Microphone	ACO Pacific 7052E	62522
Preamplifier	Svantek SV18	49561
Calibrator	Larson Davis CAL200	9512

Measurement Data

Date	Period ^a	Start Time	End Time	Leq dBA ^b	Ldn dBA ^c
06/06/2023	Morning	10:54 a.m.	11:24 a.m.	59	65

^a Morning is 7 a.m. to 12 p.m.; Afternoon is 12 p.m. to 7 p.m.; Evening is 7 p.m. to 10 p.m.; Night is 10 p.m. to 7 a.m.

^b Peak Hour Leq dBA sound level.

^c Day-Night Average Sound Level Ldn dBA. Parks do not have a Ldn sound level because there is no nighttime use.

Weather

Date	Period	Temperature	Pressure	Wind Speed	Wind Direction
06/06/2023	Morning	70 degrees Fahrenheit	30.0 inches	9 miles per hour	North

Plan View (ST-15)



Looking North (ST-15)



Looking South (ST-15)



Looking East (ST-15)



Looking West (ST-15)



Monitoring Location

Monitoring No.	ST-16
Address	3801 19th Avenue Southwest
Segment	Duwamish
Parcel	7547301420

Equipment

Equipment Type	Model Number	Serial Number
Level Analyzer	Svantek 971	72542
Microphone	ACO Pacific 7052E	68284
Preamplifier	Svantek SV18	72239
Calibrator	Larson Davis CAL200	16827

Measurement Data

Date	Period ^a	Start Time	End Time	Leq dBA ^b	Ldn dBA ^c
06/06/2023	Morning	10:54 a.m.	11:24 a.m.	58	62

^a Morning is 7 a.m. to 12 p.m.; Afternoon is 12 p.m. to 7 p.m.; Evening is 7 p.m. to 10 p.m.; Night is 10 p.m. to 7 a.m.

^b Peak Hour Leq dBA sound level.

^c Day-Night Average Sound Level Ldn dBA. Parks do not have a Ldn sound level because there is no nighttime use.

Weather

Date	Period	Temperature	Pressure	Wind Speed	Wind Direction
06/06/2023	Morning	70 degrees Fahrenheit	30.0 inches	9 miles per hour	North

Plan View (ST-16)



Looking North (ST-16)



Looking South (ST-16)



Looking East (ST-16)



Looking West (ST-16)



Monitoring Location

Monitoring No.	ST-17
Address	3719 20th Avenue Southwest
Segment	Duwamish
Parcel	9349900065

Equipment

Equipment Type	Model Number	Serial Number
Level Analyzer	Svantek 971	51818
Microphone	ACO Pacific 7052E	62522
Preamplifier	Svantek SV18	49561
Calibrator	Larson Davis CAL200	9512

Measurement Data

Date	Period ^a	Start Time	End Time	Leq dBA ^b	Ldn dBA ^c
06/06/2023	Morning	11:27 a.m.	11:57 a.m.	56	65

^a Morning is 7 a.m. to 12 p.m.; Afternoon is 12 p.m. to 7 p.m.; Evening is 7 p.m. to 10 p.m.; Night is 10 p.m. to 7 a.m.

^b Peak Hour Leq dBA sound level.

^c Day-Night Average Sound Level Ldn dBA. Parks do not have a Ldn sound level because there is no nighttime use.

Weather

Date	Period	Temperature	Pressure	Wind Speed	Wind Direction
06/06/2023	Morning	70 degrees Fahrenheit	30.0 inches	9 miles per hour	North

Plan View (ST-17)



Looking North (ST-17)



Looking South (ST-17)



Looking East (ST-17)



Looking West (ST-17)



Monitoring Location

Monitoring No.	ST-18
Address	2005 Southwest Charlestown Street
Segment	Duwamish
Parcel	7547301655

Equipment

Equipment Type	Model Number	Serial Number
Level Analyzer	Svantek 971	72542
Microphone	ACO Pacific 7052E	68284
Preamplifier	Svantek SV18	72239
Calibrator	Larson Davis CAL200	16827

Measurement Data

Date	Period ^a	Start Time	End Time	Leq dBA ^b	Ldn dBA ^c
06/06/2023	Morning	11:28 a.m.	11:58 a.m.	58	62

^a Morning is 7 a.m. to 12 p.m.; Afternoon is 12 p.m. to 7 p.m.; Evening is 7 p.m. to 10 p.m.; Night is 10 p.m. to 7 a.m.

^b Peak Hour Leq dBA sound level.

^c Day-Night Average Sound Level Ldn dBA. Parks do not have a Ldn sound level because there is no nighttime use.

Weather

Date	Period	Temperature	Pressure	Wind Speed	Wind Direction
06/06/2023	Morning	70 degrees Fahrenheit	30.0 inches	9 miles per hour	North

Plan View (ST-18)



Looking North (ST-18)



Looking South (ST-18)



Looking East (ST-18)



Looking West (ST-18)



Monitoring Location

Monitoring No.	ST-19
Address	3802 21st Avenue Southwest
Segment	Duwamish
Parcel	7547301430

Equipment

Equipment Type	Model Number	Serial Number
Level Analyzer	Svantek 971	72542
Microphone	ACO Pacific 7052E	68284
Preamplifier	Svantek SV18	72239
Calibrator	Larson Davis CAL200	16827

Measurement Data

Date	Period ^a	Start Time	End Time	Leq dBA ^b	Ldn dBA ^c
06/06/2023	Afternoon	12:02 p.m.	12:32 p.m.	60	62

^a Morning is 7 a.m. to 12 p.m.; Afternoon is 12 p.m. to 7 p.m.; Evening is 7 p.m. to 10 p.m.; Night is 10 p.m. to 7 a.m.

^b Peak Hour Leq dBA sound level.

^c Day-Night Average Sound Level Ldn dBA. Parks do not have a Ldn sound level because there is no nighttime use.

Weather

Date	Period	Temperature	Pressure	Wind Speed	Wind Direction
06/06/2023	Afternoon	70 degrees Fahrenheit	30.0 inches	9 miles per hour	North

Plan View (ST-19)



Looking North (ST-19)



Looking South (ST-19)



Looking East (ST-19)



Looking West (ST-19)



Monitoring Location

Monitoring No.	ST-20
Address	3801 22nd Avenue Southwest
Segment	Duwamish
Parcel	2848700374

Equipment

Equipment Type	Model Number	Serial Number
Level Analyzer	Svantek 971	51818
Microphone	ACO Pacific 7052E	62522
Preamplifier	Svantek SV18	49561
Calibrator	Larson Davis CAL200	9512

Measurement Data

Date	Period ^a	Start Time	End Time	Leq dBA ^b	Ldn dBA ^c
06/06/2023	Afternoon	12:04 p.m.	12:34 p.m.	60	62

^a Morning is 7 a.m. to 12 p.m.; Afternoon is 12 p.m. to 7 p.m.; Evening is 7 p.m. to 10 p.m.; Night is 10 p.m. to 7 a.m.

^b Peak Hour Leq dBA sound level.

^c Day-Night Average Sound Level Ldn dBA. Parks do not have a Ldn sound level because there is no nighttime use.

Weather

Date	Period	Temperature	Pressure	Wind Speed	Wind Direction
06/06/2023	Afternoon	70 degrees Fahrenheit	30.0 inches	9 miles per hour	North

Plan View (ST-20)



Looking North (ST-20)



Looking South (ST-20)



Looking East (ST-20)



Looking West (ST-20)



N.3A.2 Long-Term Noise Measurements

Monitoring Location

Monitoring No.	M-1
Address	4023 Southwest Edmunds Street
Area	West Seattle Junction
Parcel	757920-0491

Equipment

Equipment Type	Model Number	Serial Number
Level Analyzer	Bruel and Kjaer 2250	3006756
Microphone	Bruel and Kjaer 4189	2550228
Preamplifier	Bruel and Kjaer ZC-0032	24600
Calibrator	Bruel and Kjaer 4231	2545696

Measurement Data

Start Date	October 22, 2019
End Date	October 25, 2019
Start Time	9 a.m.
End Time	9 a.m.
Peak Hour L_{eq} sound level	62 dBA
Day-night average sound level	62 dBA

Weather

Date	Temperature	Pressure	Wind Speed	Wind Direction
October 22, 2019	53 degrees Fahrenheit	30.3 inches	0 miles per hour	West Northwest
October 23, 2019	48 degrees Fahrenheit	30.5 inches	0 miles per hour	West Southwest
October 24, 2019	50 degrees Fahrenheit	30.4 inches	0 miles per hour	West Southwest
October 25, 2019	51 degrees Fahrenheit	30.2 inches	1 mile per hour	Southwest

Plan View (M-1)



Looking North (M-1)



Looking South (M-1)



Looking East (M-1)



Monitoring Location

Monitoring No.	M-4
Address	4700 38th Avenue Southwest
Area	West Seattle Junction
Parcel	612660-0005

Equipment

Equipment Type	Model Number	Serial Number
Level Analyzer	Svantek SV307	78633
Microphone	Svantek ST30	82565
Preamplifier	Not Applicable	Not Applicable
Calibrator	Larson Davis CAL200	16826

Measurement Data

Start Date	December 6, 2019
End Date	December 10, 2019
Start Time	11 a.m.
End Time	1 p.m.
Peak Hour L_{eq} sound level	69 dBA
Day-night average sound level	68 dBA

Weather

Date	Temperature	Pressure	Wind Speed	Wind Direction
December 7, 2019	55 degrees Fahrenheit	29.9 inches	1 mile per hour	Northwest
December 8, 2019	47 degrees Fahrenheit	30.3 inches	1 mile per hour	Northeast
December 9, 2019	45 degrees Fahrenheit	30.2 inches	2 miles per hour	South

Plan View (M-4)



Looking North (M-4)



Looking South (M-4)



Looking East (M-4)



Looking West (M-4)



Monitoring Location

Monitoring No.	M-5
Address	4450 38th Avenue Southwest
Area	West Seattle Junction
Parcel	095200-4935

Equipment

Equipment Type	Model Number	Serial Number
Level Analyzer	Svantek SV307	78654
Microphone	Svantek ST30	82345
Preamplifier	Not Applicable	Not Applicable
Calibrator	Larson Davis CAL200	16826

Measurement Data

Start Date	February 11, 2020
End Date	February 14, 2020
Start Time	3 p.m.
End Time	9 a.m.
Peak Hour L_{eq} sound level	66 dBA
Day-night average sound level	68 dBA

Weather

Date	Temperature	Pressure	Wind Speed	Wind Direction
February 11, 2020	41 degrees Fahrenheit	30.5 inches	1 mile per hour	South
February 12, 2020	45 degrees Fahrenheit	30.4 inches	0 miles per hour	Southeast
February 13, 2020	42 degrees Fahrenheit	30.2 inches	3 miles per hour	South
February 14, 2020	44 degrees Fahrenheit	30.2 inches	4 miles per hour	Southwest

Plan View (M-5)



Looking North (M-5)



Looking South (M-5)



Looking East (M-5)



Looking West (M-5)



Monitoring Location

Monitoring No.	M-9
Address	3256 Southwest Avalon Way #401
Area	West Seattle Junction
Parcel	032100-0000

Equipment

Equipment Type	Model Number	Serial Number
Level Analyzer	Svantek SV307	78633
Microphone	Svantek ST30	82565
Preamplifier	Not Applicable	Not Applicable
Calibrator	Larson Davis CAL200	16826

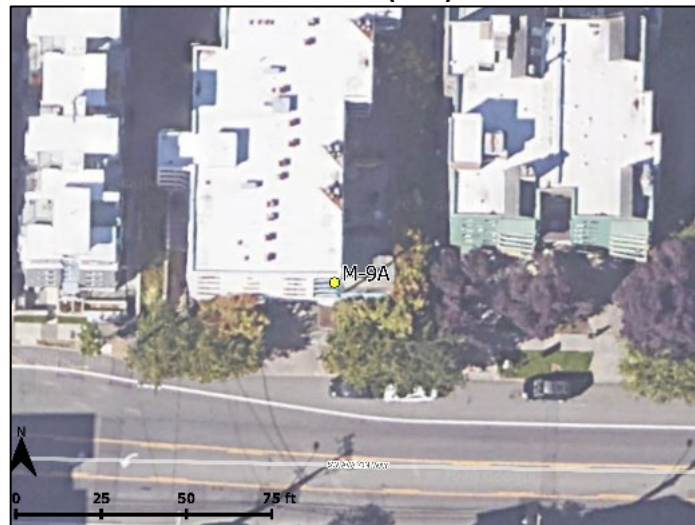
Measurement Data

Start Date	January 6, 2020
End Date	January 10, 2020
Start Time	2 p.m.
End Time	2 p.m.
Peak Hour L_{eq} sound level	67 dBA
Day-night average sound level	68 dBA

Weather

Date	Temperature	Pressure	Wind Speed	Wind Direction
January 7, 2020	50 degrees Fahrenheit	29.8 inches	7 miles per hour	Southwest
January 8, 2020	40 degrees Fahrenheit	30.0 inches	3 miles per hour	Southwest
January 9, 2020	35 degrees Fahrenheit	30.1 inches	0 miles per hour	Southeast
January 10, 2020	40 degrees Fahrenheit	30.0 inches	4 miles per hour	South

Plan View (M-9)



Looking South (M-9)



Looking East (M-9)



Looking West (M-9)



Monitoring Location

Monitoring No.	M-10
Address	4147 Fauntleroy Way Southwest
Area	West Seattle Junction
Parcel	929730-1525

Equipment

Equipment Type	Model Number	Serial Number
Level Analyzer	Svantek SV307	78633
Microphone	Svantek ST30	82565
Preamplifier	Not Applicable	Not Applicable
Calibrator	Larson Davis CAL200	16826

Measurement Data

Start Date	February 14, 2020
End Date	February 20, 2020
Start Time	9 a.m.
End Time	3 p.m.
Peak Hour L_{eq} sound level	70 dBA
Day-night average sound level	73 dBA

Weather

Date	Temperature	Pressure	Wind Speed	Wind Direction
February 17, 2020	44 degrees Fahrenheit	30.3 inches	4 miles per hour	Southwest
February 18, 2020	38 degrees Fahrenheit	30.4 inches	3 miles per hour	North
February 19, 2020	30 degrees Fahrenheit	30.5 inches	1 mile per hour	Northwest

Plan View (M-10)



Looking North (M-10)



Looking East (M-10)



Looking West (M-10)



Monitoring Location

Monitoring No.	M-11
Address	3225 Southwest Genesee Street
Area	West Seattle Junction
Parcel	929730-1780

Equipment

Equipment Type	Model Number	Serial Number
Level Analyzer	Svantek 971	51818
Microphone	ACO Pacific 7052E	62522
Preamplifier	Svantek SV18	49561
Calibrator	Larson Davis CAL200	9512

Measurement Data

Start Date	November 12, 2019
End Date	November 14, 2019
Start Time	12 p.m.
End Time	1 p.m.
Peak Hour L_{eq} sound level	56 dBA
Day-night average sound level	59 dBA

Weather

Date	Temperature	Pressure	Wind Speed	Wind Direction
November 12, 2019	50 degrees Fahrenheit	30.1 inches	0 miles per hour	Northwest
November 13, 2019	50 degrees Fahrenheit	30.1 inches	0 miles per hour	Northwest
November 14, 2019	48 degrees Fahrenheit	30.0 inches	2 miles per hour	Southwest

Plan View (M-11)



Looking North (M-11)



Looking South (M-11)



Looking East (M-11)



Looking West (M-11)



Monitoring Location

Monitoring No.	M-12
Address	4143 32nd Avenue Southwest
Area	West Seattle Junction
Parcel	929730-1220

Equipment

Equipment Type	Model Number	Serial Number
Level Analyzer	Svantek 971	72542
Microphone	ACO Pacific 7052E	68284
Preamplifier	Svantek SV18	72239
Calibrator	Larson Davis CAL200	16827

Measurement Data

Start Date	February 11, 2020
End Date	February 14, 2020
Start Time	2 p.m.
End Time	9 a.m.
Peak Hour L_{eq} sound level	53 dBA
Day-night average sound level	56 dBA

Weather

Date	Temperature	Pressure	Wind Speed	Wind Direction
February 11, 2020	41 degrees Fahrenheit	30.5 inches	1 mile per hour	South
February 12, 2020	45 degrees Fahrenheit	30.4 inches	0 miles per hour	Southeast
February 13, 2020	42 degrees Fahrenheit	30.2 inches	3 miles per hour	South
February 14, 2020	44 degrees Fahrenheit	30.2 inches	4 miles per hour	Southwest

Plan View (M-12)



Looking North (M-12)



Looking South (M-12)



Looking East (M-12)



Looking West (M-12)



Monitoring Location

Monitoring No.	M-13
Address	2848 Southwest Genesee Street
Area	Delridge
Parcel	935800-2353

Equipment

Equipment Type	Model Number	Serial Number
Level Analyzer	Svantek 971	51818
Microphone	ACO Pacific 7052E	62522
Preamplifier	Svantek SV18	49561
Calibrator	Larson Davis CAL200	9512

Measurement Data

Start Date	October 22, 2019
End Date	October 25, 2019
Start Time	11 a.m.
End Time	9 a.m.
Peak Hour L_{eq} sound level	60 dBA
Day-night average sound level	60 dBA

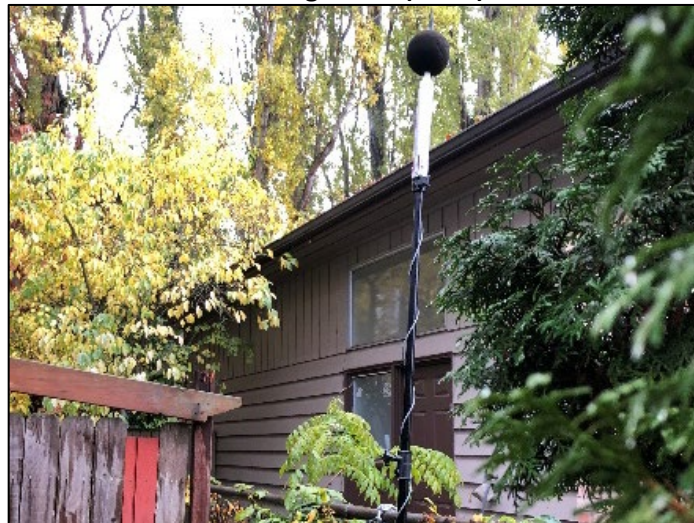
Weather

Date	Temperature	Pressure	Wind Speed	Wind Direction
October 22, 2019	55 degrees Fahrenheit	30.3 inches	2 miles per hour	South
October 23, 2019	47 degrees Fahrenheit	30.5 inches	2 miles per hour	Northwest
October 24, 2019	50 degrees Fahrenheit	30.4 inches	0 miles per hour	East-northeast
October 25, 2019	51 degrees Fahrenheit	30.7 inches	3 miles per hour	South-southwest

Plan View (M-13)



Looking North (M-13)



Looking South (M-13)



Looking East (M-13)



Monitoring Location

Monitoring No.	M-15
Address	4421 26th Avenue Southwest
Area	Delridge
Parcel	177260-0710

Equipment

Equipment Type	Model Number	Serial Number
Level Analyzer	Svantek 307	78647
Microphone	Svantek ST30	79071
Preamplifier	Not Applicable	Not Applicable
Calibrator	Larson Davis CAL200	16827

Measurement Data

Start Date	December 6, 2019
End Date	December 10, 2019
Start Time	10 a.m.
End Time	1 p.m.
Peak Hour L_{eq} sound level	51 dBA
Day-night average sound level	53 dBA

Weather

Date	Temperature	Pressure	Wind Speed	Wind Direction
December 7, 2019	55 degrees Fahrenheit	29.9 inches	0 miles per hour	Northwest
December 8, 2019	47 degrees Fahrenheit	30.3 inches	1 mile per hour	Northeast
December 9, 2019	45 degrees Fahrenheit	30.2 inches	2 miles per hour	South

Plan View (M-15)



Looking North (M-15)



Looking South (M-15)



Looking East (M-15)



Looking West (M-15)



Monitoring Location

Monitoring No.	M-16
Address	4106 26th Avenue Southwest
Area	Delridge
Parcel	789160-0017

Equipment

Equipment Type	Model Number	Serial Number
Level Analyzer	Svantek 307	78633
Microphone	Svantek ST30	82565
Preamplifier	Not Applicable	Not Applicable
Calibrator	Larson Davis CAL200	16827

Measurement Data

Start Date	January 16, 2020
End Date	January 22, 2020
Start Time	9 a.m.
End Time	10 a.m.
Peak Hour L_{eq} sound level	52 dBA
Day-night average sound level	54 dBA

Weather

Date	Temperature	Pressure	Wind Speed	Wind Direction
January 16, 2020	39 degrees Fahrenheit	29.7 inches	4 miles per hour	Southwest
January 17, 2020	39 degrees Fahrenheit	29.7 inches	3 miles per hour	Southwest
January 20, 2020	38 degrees Fahrenheit	30.0 inches	1 mile per hour	Southwest
January 21, 2020	46 degrees Fahrenheit	29.7 inches	5 miles per hour	Southwest
January 22, 2020	45 degrees Fahrenheit	30.0 inches	5 miles per hour	South

Plan View (M-16)



Looking North (M-16)



Looking South (M-16)



Looking East (M-16)



Looking West (M-16)



Monitoring Location

Monitoring No.	M-17
Address	4143 23rd Avenue Southwest
Area	Delridge
Parcel	789210-0020

Equipment

Equipment Type	Model Number	Serial Number
Level Analyzer	Svantek 971	72542
Microphone	ACO Pacific 7052E	68284
Preamplifier	Svantek SV18	72239
Calibrator	Larson Davis CAL200	16827

Measurement Data

Start Date	November 12, 2019
End Date	November 14, 2019
Start Time	11 a.m.
End Time	1 p.m.
Peak Hour L_{eq} sound level	59 dBA
Day-night average sound level	62 dBA

Weather

Date	Temperature	Pressure	Wind Speed	Wind Direction
November 12, 2019	50 degrees Fahrenheit	30.1 inches	0 miles per hour	Northwest
November 13, 2019	50 degrees Fahrenheit	30.1 inches	0 miles per hour	Northwest
November 14, 2019	48 degrees Fahrenheit	30.0 inches	2 miles per hour	Southwest

Plan View (M-17)



Looking North (M-17)



Looking South (M-17)



Looking East (M-17)



Looking West (M-17)



Monitoring Location

Monitoring No.	M-20
Address	3709 20th Avenue Southwest
Area	Duwamish
Parcel	934990-0080

Equipment

Equipment Type	Model Number	Serial Number
Level Analyzer	Svantek 307	78661
Microphone	Svantek ST 30	82349
Preamplifier	Not Applicable	Not Applicable
Calibrator	Larson Davis CAL200	16827

Measurement Data

Start Date	January 16, 2020
End Date	January 22, 2020
Start Time	10 a.m.
End Time	11 a.m.
Peak Hour L_{eq} sound level	72 dBA
Day-night average sound level	75 dBA

Weather

Date	Temperature	Pressure	Wind Speed	Wind Direction
January 16, 2020	39 degrees Fahrenheit	29.7 inches	3 miles per hour	Southwest
January 17, 2020	38 degrees Fahrenheit	30.0 inches	1 mile per hour	Southwest
January 20, 2020	46 degrees Fahrenheit	29.7 inches	5 miles per hour	Southwest
January 21, 2020	45 degrees Fahrenheit	30.0 inches	5 miles per hour	South
January 22, 2020	45 degrees Fahrenheit	30.0 inches	4 miles per hour	South

Plan View (M-20)



Looking South (M-20)



Looking East (M-20)



Looking West (M-20)



Monitoring Location

Monitoring No.	M-21
Address	3712 19th Avenue Southwest
Area	Duwamish
Parcel	934990-0225

Equipment

Equipment Type	Model Number	Serial Number
Level Analyzer	Svantek 971	72542
Microphone	ACO Pacific 7052E	68284
Preamplifier	Svantek SV18	72239
Calibrator	Larson Davis CAL200	16827

Measurement Data

Start Date	October 22, 2019
End Date	October 25, 2019
Start Time	10 a.m.
End Time	9 a.m.
Peak Hour L_{eq} sound level	72 dBA
Day-night average sound level	75 dBA

Weather

Date	Temperature	Pressure	Wind Speed	Wind Direction
October 22, 2019	55 degrees Fahrenheit	30.3 inches	2 miles per hour	South
October 23, 2019	47 degrees Fahrenheit	30.5 inches	2 miles per hour	Northwest
October 24, 2019	50 degrees Fahrenheit	30.4 inches	0 miles per hour	East-northeast
October 25, 2019	51 degrees Fahrenheit	30.7 inches	3 miles per hour	South-southwest

Plan View (M-21)



Looking North (M-21)



Looking South (M-21)



Looking East (M-21)



Looking West (M-21)



Monitoring Location

Monitoring No.	M-22
Address	3823 17th Avenue Southwest
Area	Duwamish
Parcel	754730-0940

Equipment

Equipment Type	Model Number	Serial Number
Level Analyzer	Svantek 958	59108
Microphone	Svantek MK255	12529
Preamplifier	Svantek SV12L	57961
Calibrator	Larson Davis CAL200	9512

Measurement Data

Start Date	November 7, 2019
End Date	November 14, 2019
Start Time	12 p.m.
End Time	1 p.m.
Peak Hour L_{eq} sound level	67 dBA
Day-night average sound level	69 dBA

Weather

Date	Temperature	Pressure	Wind Speed	Wind Direction
November 7, 2019	45 degrees Fahrenheit	30.2 inches	1 mile per hour	Northeast
November 8, 2019	48 degrees Fahrenheit	30.1 inches	3 miles per hour	South
November 11, 2019	50 degrees Fahrenheit	30.1 inches	0 miles per hour	Northwest
November 12, 2019	50 degrees Fahrenheit	30.1 inches	0 miles per hour	Northwest
November 13, 2019	48 degrees Fahrenheit	30.0 inches	2 miles per hour	Southwest
November 14, 2019	46 degrees Fahrenheit	30.0 inches	0 miles per hour	South

Plan View (M-22)



Looking North (M-22)



Looking East (M-22)



Looking West (M-22)



Monitoring Location

Monitoring No.	M-23
Address	3816 23rd Avenue Southwest
Segment	Duwamish
Parcel	2848700160

Equipment

Equipment Type	Model Number	Serial Number
Level Analyzer	Bruel and Kjaer 2238	2160401
Microphone	Bruel and Kjaer 4137	1942972
Preamplifier	Bruel and Kjaer	Not Applicable
Calibrator	Larson Davis CAL200	16513

Measurement Data

Start Date	November 8, 2022
End Date	November 10, 2022
Start Time	11 a.m.
End Time	9 a.m.
Peak Hour Leq dBA Sound Level	68 dBA
Day-Night Average Sound Level Ldn dBA	69 dBA

Weather

Date	Temperature	Pressure	Wind Speed	Wind Direction
November 8, 2022	38 degrees Fahrenheit	29.5 inches	18 miles per hour	North-northeast
November 9, 2022	38 degrees Fahrenheit	29.8 inches	7 miles per hour	East
November 10, 2022	37 degrees Fahrenheit	29.9 inches	4 miles per hour	South-southeast

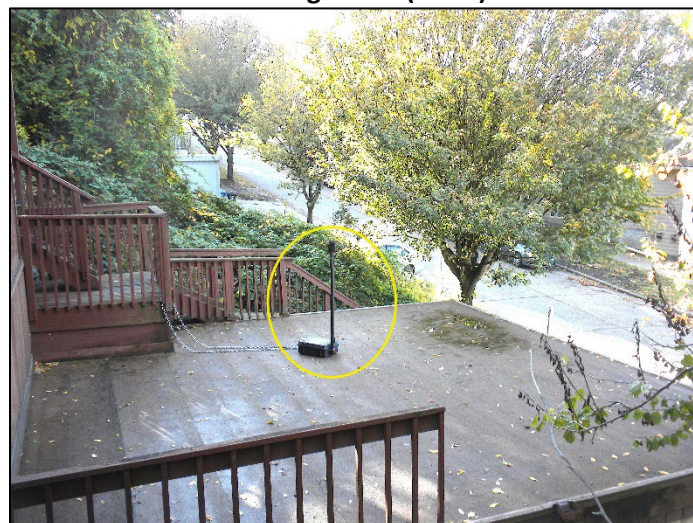
Plan View (M-23)



Looking North (M-23)



Looking South (M-23)



Looking East (M-23)



Looking West (M-23)



Monitoring Location

Monitoring No.	M-24
Address	3856 23rd Avenue Southwest
Segment	Duwamish
Parcel	2848700230

Equipment

Equipment Type	Model Number	Serial Number
Level Analyzer	Bruel and Kjaer 2238	2664578
Microphone	Bruel and Kjaer 4188	2200802
Preamplifier	Bruel and Kjaer	Not Applicable
Calibrator	Larson Davis CAL200	16513

Measurement Data

Start Date	November 8, 2022
End Date	November 10, 2022
Start Time	11 a.m.
End Time	9 a.m.
Peak Hour Leq dBA Sound Level	68 dBA
Day-Night Average Sound Level Ldn dBA	64 dBA

Weather

Date	Temperature	Pressure	Wind Speed	Wind Direction
November 8, 2022	38 degrees Fahrenheit	29.5 inches	18 miles per hour	North-northeast
November 9, 2022	38 degrees Fahrenheit	29.8 inches	7 miles per hour	East
November 10, 2022	37 degrees Fahrenheit	29.9 inches	4 miles per hour	South-southeast

Plan View (M-24)



Looking North (M-24)



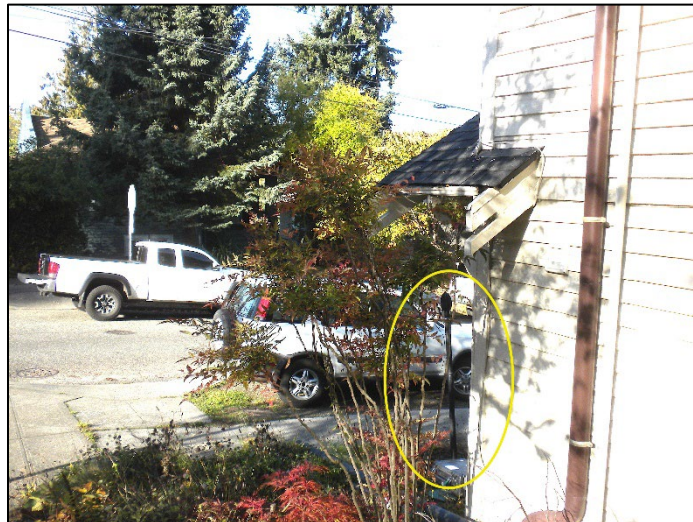
Looking South (M-24)



Looking East (M-24)



Looking West (M-24)



Monitoring Location

Monitoring No.	M-25
Address	2821 Southwest Yancy Street
Segment	Delridge
Parcel	9358000515

Equipment

Equipment Type	Model Number	Serial Number
Level Analyzer	Bruel and Kjaer 2238	2664578
Microphone	Bruel and Kjaer 4188	2200802
Preamplifier	Bruel and Kjaer	Not Applicable
Calibrator	Larson Davis CAL200	16513

Measurement Data

Start Date	January 24, 2023
End Date	January 27, 2023
Start Time	12 p.m.
End Time	10 a.m.
Peak Hour Leq dBA Sound Level	68 dBA
Day-Night Average Sound Level Ldn dBA	64 dBA

Weather

Date	Temperature	Pressure	Wind Speed	Wind Direction
January 24, 2023	41 degrees Fahrenheit	30.2 inches	6 miles per hour	South-southeast
January 25, 2023	44 degrees Fahrenheit	30.3 inches	4 miles per hour	North-northwest
January 26, 2023	38 degrees Fahrenheit	30.2 inches	6 miles per hour	South
January 27, 2023	45 degrees Fahrenheit	29.8 inches	8 miles per hour	South-southwest

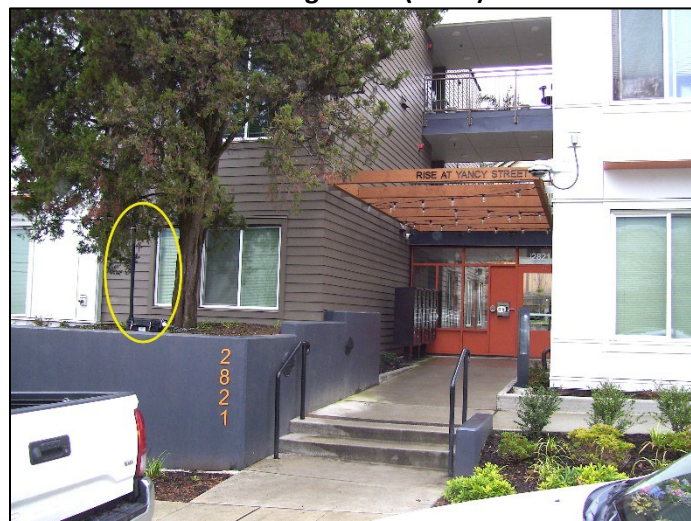
Plan View (M-25)



Looking Northwest (M-25)



Looking South (M-25)



Looking East (M-25)



Looking West (M-25)



Monitoring Location

Monitoring No.	M-26
Address	3000 Southwest Avalon Way
Segment	Delridge
Parcel	7732800000

Equipment

Equipment Type	Model Number	Serial Number
Level Analyzer	Bruel and Kjaer 2238	2160401
Microphone	Bruel and Kjaer 4137	1942972
Preamplifier	Bruel and Kjaer	Not Applicable
Calibrator	Larson Davis CAL200	16513

Measurement Data

Start Date	January 29, 2023
End Date	February 1, 2023
Start Time	1 p.m.
End Time	12 p.m.
Peak Hour Leq dBA Sound Level	72 dBA
Day-Night Average Sound Level Ldn dBA	70 dBA

Weather

Date	Temperature	Pressure	Wind Speed	Wind Direction
January 29, 2023	34 degrees Fahrenheit	30.0 inches	6 miles per hour	North and Northeast
January 30, 2023	32 degrees Fahrenheit	30.0 inches	5 miles per hour	Varied
January 31, 2023	35 degrees Fahrenheit	29.8 inches	5 miles per hour	Varied
February 1, 2023	35 degrees Fahrenheit	29.7 inches	6 miles per hour	South and Southeast

Plan View (M-26)



Looking North (M-26)



Looking East (M-26)



Looking West (M-26)



Monitoring Location

Monitoring No.	M-27
Address	4009 32nd Avenue Southwest
Segment	Delridge
Parcel	9297301106

Equipment

Equipment Type	Model Number	Serial Number
Level Analyzer	Bruel and Kjaer 2238	2457189
Microphone	Bruel and Kjaer 4188	2499783
Preamplifier	Bruel and Kjaer	Not Applicable
Calibrator	Larson Davis CAL200	16513

Measurement Data

Start Date	January 24, 2023
End Date	January 27, 2023
Start Time	11 a.m.
End Time	10 a.m.
Peak Hour Leq dBA Sound Level	60 dBA
Day-Night Average Sound Level Ldn dBA	57 dBA

Weather

Date	Temperature	Pressure	Wind Speed	Wind Direction
January 24, 2023	41 degrees Fahrenheit	30.2 inches	6 miles per hour	South-southeast
January 25, 2023	44 degrees Fahrenheit	30.3 inches	4 miles per hour	North-northwest
January 26, 2023	38 degrees Fahrenheit	30.2 inches	6 miles per hour	South
January 27, 2023	45 degrees Fahrenheit	29.8 inches	8 miles per hour	South-southwest

Plan View (M-27)



Looking North (M-27)



Looking South (M-27)



Looking West (M-27)



Monitoring Location

Monitoring No.	M-28
Address	4403 37th Avenue Southwest
Segment	West Seattle Junction
Parcel	0952004705

Equipment

Equipment Type	Model Number	Serial Number
Level Analyzer	Bruel and Kjaer 2238	2124742
Microphone	Bruel and Kjaer 4188	2120929
Preamplifier	Bruel and Kjaer	Not Applicable
Calibrator	Larson Davis CAL200	16513

Measurement Data

Start Date	November 8, 2022
End Date	November 10, 2022
Start Time	11 a.m.
End Time	9 a.m.
Peak Hour Leq dBA Sound Level	62 dBA
Day-Night Average Sound Level Ldn dBA	62 dBA

Weather

Date	Temperature	Pressure	Wind Speed	Wind Direction
November 8, 2022	38 degrees Fahrenheit	29.5 inches	18 miles per hour	North-northeast
November 9, 2022	38 degrees Fahrenheit	29.8 inches	7 miles per hour	East
November 10, 2022	37 degrees Fahrenheit	29.9 inches	4 miles per hour	South-southeast

Plan View (M-28)



Looking North (M-28)



Looking South (M-28)



Looking Northwest (M-28)



Looking West (M-28)



Monitoring Location

Monitoring No.	M-29
Address	4537 41st Avenue Southwest
Segment	West Seattle Junction
Parcel	0952006725

Equipment

Equipment Type	Model Number	Serial Number
Level Analyzer	Bruel and Kjaer 2238	2457189
Microphone	Bruel and Kjaer 4188	2499783
Preamplifier	Bruel and Kjaer	Not Applicable
Calibrator	Larson Davis CAL200	16513

Measurement Data

Start Date	November 8, 2022
End Date	November 10, 2022
Start Time	10 a.m.
End Time	9 a.m.
Peak Hour Leq dBA Sound Level	67 dBA
Day-Night Average Sound Level Ldn dBA	61 dBA

Weather

Date	Temperature	Pressure	Wind Speed	Wind Direction
November 8, 2022	38 degrees Fahrenheit	29.5 inches	18 miles per hour	North-northeast
November 9, 2022	38 degrees Fahrenheit	29.8 inches	7 miles per hour	East
November 10, 2022	37 degrees Fahrenheit	29.9 inches	4 miles per hour	South-southeast

Plan View (M-29)



Looking North (M-29)



Looking South (M-29)



Looking West (M-29)



Looking Southwest (M-29)



Monitoring Location

Monitoring No.	M-30
Address	4040 26th Avenue Southwest
Segment	Delridge
Parcel	2444600025

Equipment

Equipment Type	Model Number	Serial Number
Level Analyzer	Svantek 307	78628
Microphone	Svantek ST30A	125191
Preamplifier	Not Applicable	Not Applicable
Calibrator	Larson Davis CAL200	18605

Measurement Data

Start Date	06/08/2023
End Date	06/13/2023
Start Time	10 a.m.
End Time	11 a.m.
Peak Hour Leq dBA Sound Level	63 dBA
Day-Night Average Sound Level Ldn dBA	64 dBA

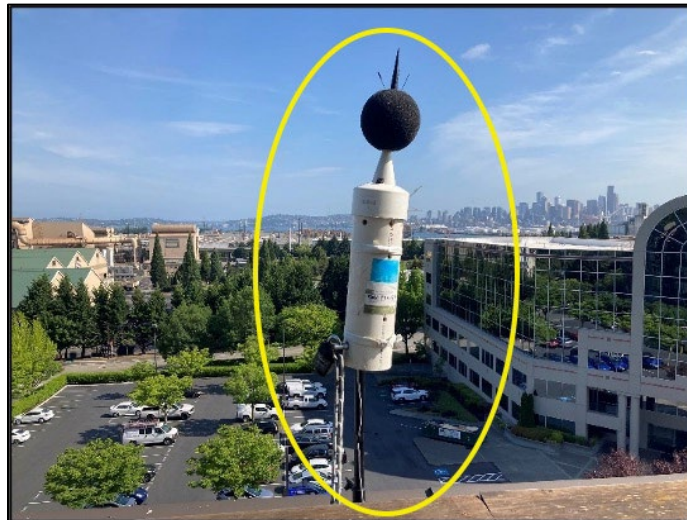
Weather

Measurement	6/8/2023	6/9/2023	6/12/2023	6/13/2023
Temperature	71 degrees Fahrenheit	56 degrees Fahrenheit	70 degrees Fahrenheit	59 degrees Fahrenheit
Pressure	30.0 inches	30.1 inches	30.0 inches	30.0 inches
Wind Speed	4 miles per hour	3 miles per hour	2 miles per hour	4 miles per hour
Wind Direction	South	South	South-southwest	South

Plan View (M-30)



Looking North (M-30)



Looking East (M-30)



Looking West (M-30)



This page is intentionally left blank.

Attachment N.3B
Vibration Measurement Site Photographs

This page is intentionally left blank.

Attachment N.3B Vibration Measurement Site Photographs

Figure N.3B-1. Photograph of Vibration Propagation Measurement Site V-A –
Alley off of 41st Avenue at Alaska Way



Figure N.3B-2. Aerial View of Vibration Propagation Measurement Site V-A –
Alley off of 41st Avenue at Alaska Way



Figure N.3B-3. Photograph of Borehole Vibration Propagation Measurement Site V-2 – 39th Avenue Southwest at Southwest Genesee Street



Figure N.3B-4. Aerial View of Borehole Vibration Propagation Measurement Site V-2 – 39th Avenue Southwest at Southwest Genesee Street



**Figure N.3B-5. Photograph of Borehole Vibration Propagation Measurement Site
V-3 – 32nd Avenue Southwest at Southwest Genesee Street**



**Figure N.3B-6. Aerial View of Borehole Vibration Propagation Measurement Site
V-3 – 32nd Avenue Southwest at Southwest Genesee Street**

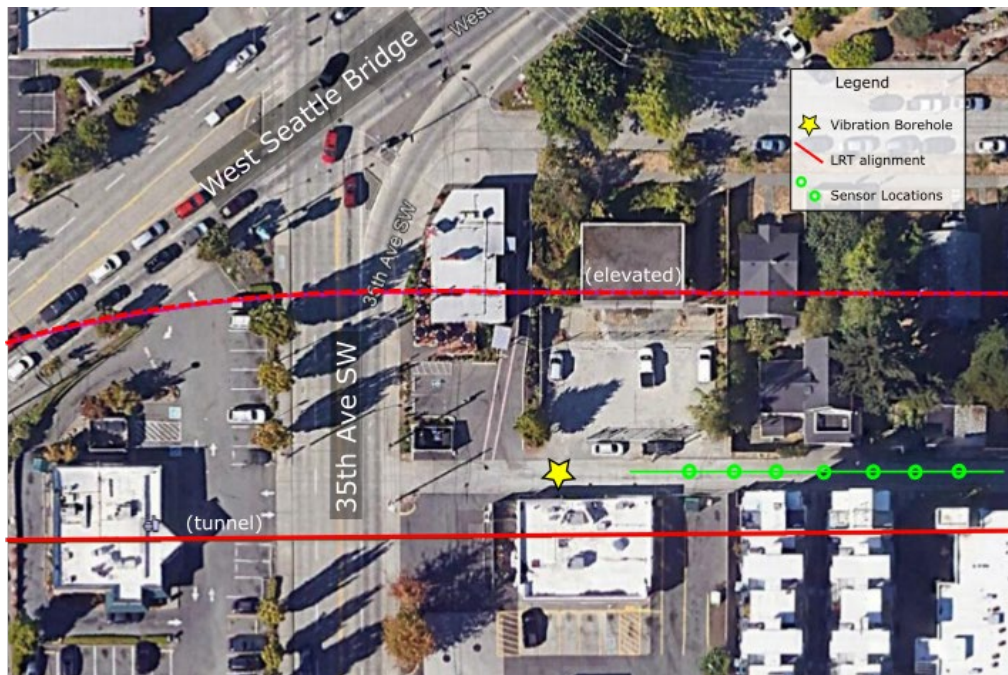


Figure N.3B-7. Photograph of Vibration Propagation Measurement Site V-B – Southwest Genesee Street at 32nd Avenue Southwest



Figure N.3B-8. Aerial View of Vibration Propagation Measurement Site V-B – Southwest Genesee Street at 32nd Avenue Southwest



**Figure N.3B-9. Photograph of Vibration Propagation Measurement Site V-C –
Dakota Street at 25th Avenue Southwest**



**Figure N.3B-10. Aerial View of Vibration Propagation Measurement Site V-C –
Dakota Street at 25th Avenue Southwest**



Figure N.3B-11. Photograph of Vibration Propagation Measurement Site V-D – Bike Path at 22nd Avenue Southwest near West Seattle Bridge

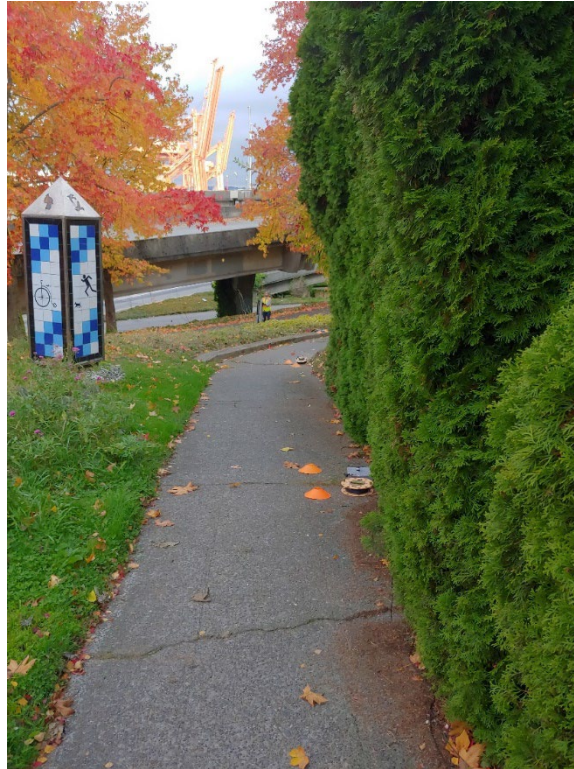


Figure N.3B-12. Aerial View of Vibration Propagation Measurement Site V-D – Bike Path at 22nd Avenue Southwest near West Seattle Bridge



Figure N.3B-13. Photograph of Vibration Propagation Measurement Site V-E – Harbor Island Machine Works, 3431 11th Avenue Southwest

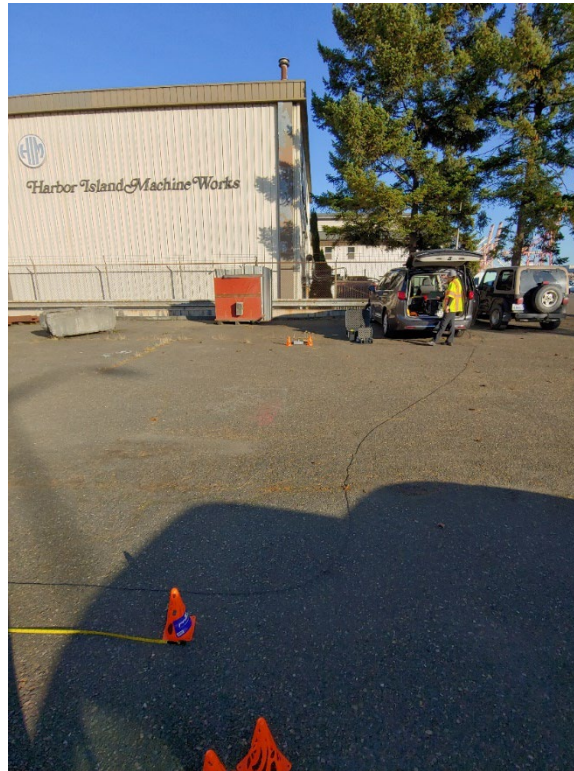


Figure N.3B-14. Aerial View of Vibration Propagation Measurement Site V-E – Harbor Island Machine Works, 3431 11th Avenue Southwest



This page is intentionally left blank.