



FARE REVENUE REPORT 2022

Table of Contents

Executive summary	3
Overview	5
Sound Transit fare revenue and ridership	6
Fare structure	7
Link	7
ST Express	7
Sounder	8
Tacoma Link	8
Farebox recovery	9
Link	10
ST Express	10
Sounder	10
Passenger fare revenue by mode	11
Link	14
ST Express	16
Sounder	18
Special rates of fare	22
APPENDIX A - Fares by station	26
Sounder South (Lakewood-Seattle)	26
Sounder North (Everett-Seattle)	26
Link	27
APPENDIX B - ST Express route detail	28

Executive summary

The purpose of this report is to review Sound Transit fare revenue, farebox recovery rates and the status of various fare-related programs. Results show that 2022 fare revenue and farebox recovery rates are increasing as compared to 2021 levels, yet still lag prepandemic (2019) levels.

In 2022, systemwide ridership increased 83% and fare revenue increased 60% when compared to 2021. Fare revenue gains were driven in part from higher overall ridership, as well as full year ridership from the Link Northgate Extension that opened in October 2021. Although increasing, ridership and fare revenue are not yet at prepandemic levels. Systemwide ridership in 2022 was still 32% lower than 2019 levels and fare revenue was 54% lower than 2019.

One of the insights of the 2022 Fare Revenue Report is that fare revenue is not increasing at the same rate as ridership. In past years, ridership and fare revenue were closely linked, with similar increases or decreases. In 2022, however, ridership increased 83% and fare revenue increased only 60%. The main cause of the difference is lower fare payment compliance — particularly on Link light rail -- when compared to prepandemic levels.

While Link fare revenue increased in 2022 due to an increase in ridership, the average fare per boarding (AFB) has gone down compared to prior years due to an increase in non-fare boardings. Non-fare boardings are boardings where there is not an associated record of fare media use. The non fare boardings rate on Link was 44% in 2022 up from 14% in 2019. The Average Fare Per Boarding (AFB) on Link continued an unfavorable trend from \$1.75 in 2019 to \$1.23 in 2022.

In September 2021, Sound Transit replaced fare enforcement officers and started the Fare Ambassador program emphasizing passenger fare education and customer service to encourage fare compliance. In 2022, the Fare Ambassador program was continuing to ramp-up and hire Fare Ambassadors to meet its target for number of fare inspections. As of the end of 2022, there were 17 Fare Ambassadors in the field compared to a staffing target of 24. Fare compliance will continue to be monitored as the Fare Ambassador program matures and is fully implemented. The Sound Transit Board and Rider Experience and Operations Committee receive regular briefings on this program.

Ridership and fare revenue: In 2022 ridership increased by 83% compared to 2021.

- In 2022, systemwide fare revenue increased by 60% to \$45.1 million, compared to \$28.1 million in 2021.
 - Link fare revenue increased by \$13.5 million (87%) from 2021;
 - ST Express fare revenue increased by \$2.2 million (22%) from 2021;
 - Sounder fare revenue increased by \$1.3 million (46%) from 2021.
- Working from home continued to affect the share of Sound Transit's fare revenue from ORCA Business Passport accounts. The ORCA Passport program involves transit agencies working with businesses to provide transportation services to employees and students. In 2022, ORCA Business Passport fare revenue increased by 65% from \$12.3 million in 2021 to \$20.3 million in 2022 as more employees returned to their worksites. In 2022, revenue from ORCA Business Passport accounts was 45% of the total Sound Transit fare revenue.

Farebox recovery rates: Per Sound Transit's fare policy, farebox revenue should recover a specified percentage of operating costs. In 2022 all modes were below the fare policy for minimum farebox recovery thresholds as fare revenue is not keeping pace with operating costs and reflects lower fare payment compliance. Operating costs continue to grow year over year.

- ST Express bus farebox revenue was 9% of operating costs in 2022; lower than the 20% minimum policy threshold.

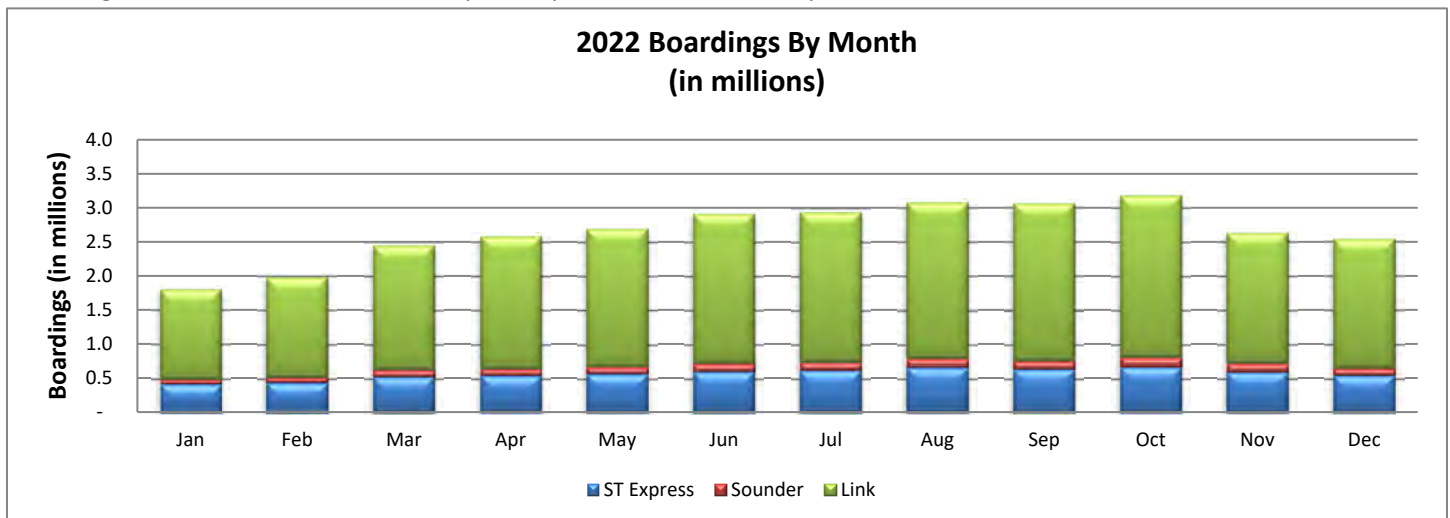
- Sounder farebox revenue was 7% of operating costs in 2022; lower than the 23% minimum policy threshold.
- Link farebox revenue was 16% of operating costs in 2022; lower than the 40% minimum policy threshold.

The issue of farebox recovery rates not meeting minimum policy thresholds has been flagged for the Sound Transit Board and information was included in the Board’s Fares Workshop held on March 16, 2022 and several additional briefings. Sound Transit continues to monitor and report to the Board on farebox recovery rates as ridership returns from the pandemic and Sound Transit opens new Link service extensions.

Increased assistance for riders with low incomes: In 2022, Sound Transit continued to work with our partners to assist the most vulnerable members of our communities to access transit services and the opportunities they provide. Sound Transit continued several fare-related efforts to assist riders with low incomes or those experiencing economic hardship, including:

- Lowered the ORCA LIFT fare on all modes starting in September 2022 from \$1.50 to \$1.00. In May, the Sound Transit Board approved lowering the ORCA LIFT fare so that ORCA LIFT passengers can now travel anywhere on Sound Transit service for \$1.00.
- In July of 2022, the Sound Transit Board approved the Free Youth Transit Pass. Youth 18 and younger were able to travel fare free beginning in September 2022.
- Funding additional outreach to promote registration for the ORCA LIFT low-income fare program.
- Partnering with Metro, Seattle-King County Public Health, Catholic Community Services and the Washington State Department of Health and Social Service (DSHS) to increase ORCA LIFT enrollment, especially in Pierce and Snohomish counties. By the end of 2022, there had been more than 183,000 ORCA LIFT enrollments with more than 53,000 active ORCA LIFT riders, an increase of 26% from 2021.
- Incentivizing registration for ORCA LIFT by providing \$10 preloaded (approximately 10 free rides) on ORCA LIFT cards for people who register for this program.
- Continuation of the ORCA LIFT Subsidized Annual Pass Pilot Program with King County Metro. For this program, Sound Transit and King County Metro are providing free 12-month ORCA passes to riders with incomes 80% of the federal poverty level (or lower) who are enrolled in one of six state benefit programs.
- Providing additional human services tickets at a 90% discount to human service agencies in cooperation with King County Metro.

The graph below shows how ridership in 2022 improved by month as the pandemic conditions eased. Monthly boardings totaled 1.8 million in January and by October the monthly total had increased to 3.1 million.

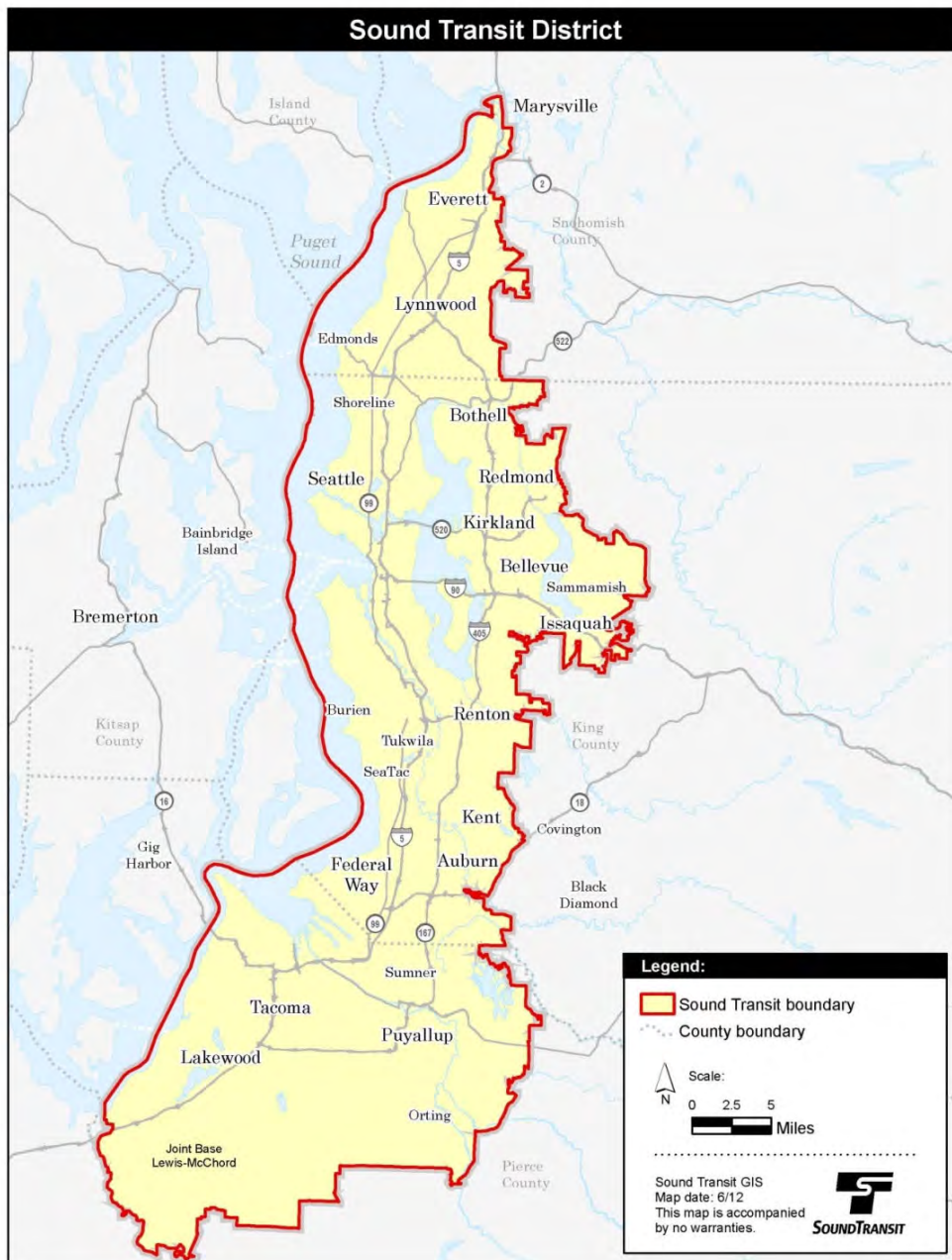


Overview

Transit fares are an important source of revenue to fund transit operations. Through 2046, Sound Transit’s long-range Financial Plan assumes \$6.4 billion of fare revenue, approximately 4% of the revenue anticipated in the Sound Transit Financial Plan.

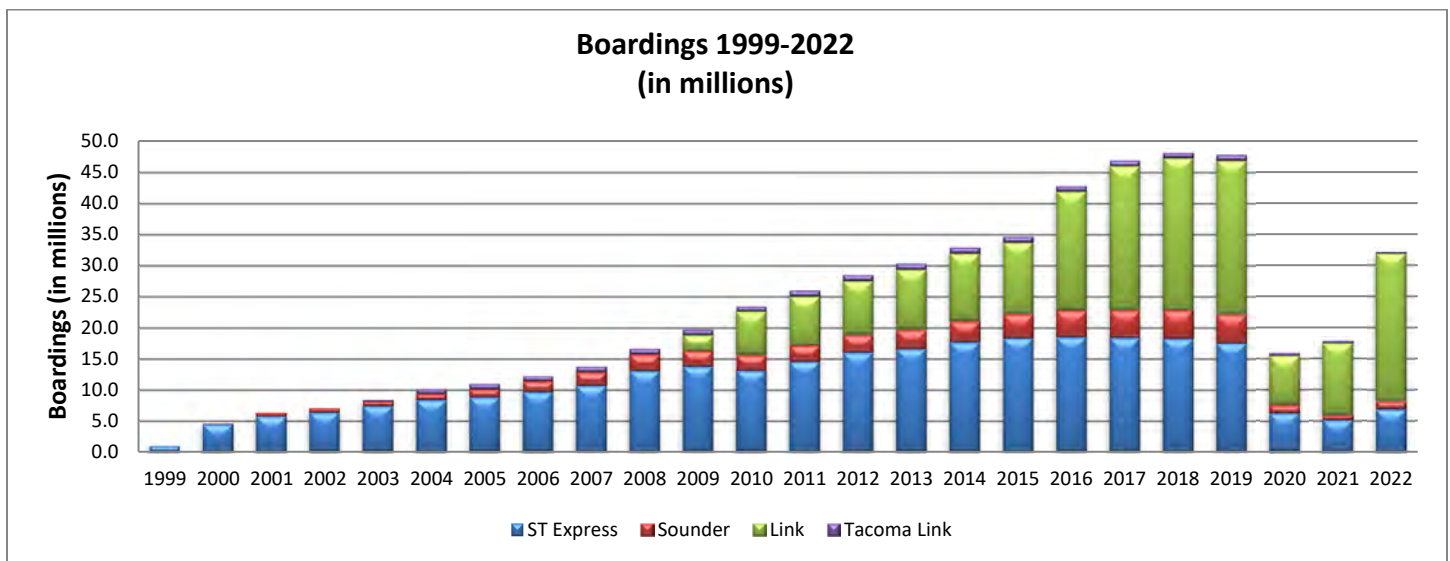
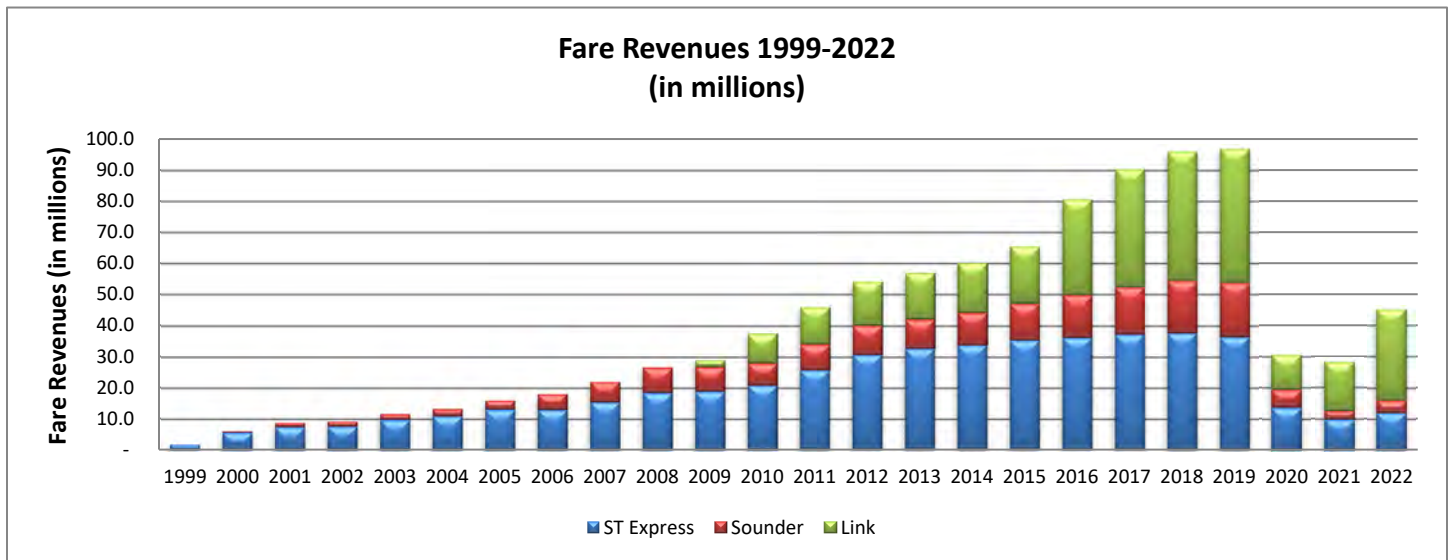
Sound Transit policy sets farebox recovery targets at a minimum percentage of total operating costs, and this ratio varies by mode as defined in Sound Transit Board Resolution 2014-27.

Figure 1: Sound Transit District



Sound Transit fare revenue and ridership

The two graphs below show that Sound Transit fare revenue and ridership grew significantly from 1999-2019. In 2020-2022, however, the COVID-19 pandemic caused fare revenue and ridership to drop significantly.



Sound Transit operational milestones

- September 1999 – ST Express service begins
- September 2000 – Sounder rail service begins
- August 2003 – Tacoma Link service begins
- July 2009 – Link light rail begins service from Westlake to Tukwila International Boulevard
- December 2009 – Link light rail begins service to Sea-Tac Airport
- October 2012 – Sounder extension to South Tacoma and Lakewood begins
- March 2016 – Link light rail begins service to Capitol Hill and the University of Washington
- September 2016 – Link light rail begins service to Angle Lake
- October 2021 – Link light rail begins service to Northgate, Roosevelt and U-District

Fare structure

Sound Transit’s fare structure varies based on mode of service, distance traveled and/or the rider’s fare category. Except for ORCA LIFT, our customer fare categories are consistent with those of the other five transit agencies participating in the ORCA system for regional fare payment:

- **Adult:** Ages 19 to 64
- **Youth:** Ages 18 and under
- **Reduced:** Ages 65 or older, persons with disabilities or Medicare card holders (requires a valid Regional Reduced Fare Permit as proof of eligibility on buses)
- **Low income (ORCA LIFT):** Riders with household income equal to or less than 200% of the federal poverty level (enrollment by authorized ORCA LIFT agencies with income verification – as of 2022, Pierce Transit did not have an ORCA LIFT fare)

Sound Transit is participating, on a demonstration program basis, in King County Metro’s program for very low-income riders:

- **Subsidized Annual Pass:** This program provides a free annual pass for riders with household incomes equal to or less than 80% of the federal poverty level and who are enrolled in one of six state benefit programs – TANF/SFA, RCA, ABD, PWA, SSI, HEN (enrollment by authorized DSHS, Public Health, and Community Services agencies with income verification and state benefit programs)

Link

Link light rail currently serves 19 stations on a 24.3-mile line in Seattle and South King County, including service to Northgate, the University of Washington, downtown Seattle and Sea-Tac Airport. Link charges a base fare of \$2.25 plus a distance charge of \$0.05 per mile, rounded to the nearest \$0.25. (See Appendix A for a chart of station-to-station fares.)

	September 1, 2022 - Present	October 1, 2021 – August 30, 2022
Adult	\$2.25 - \$3.50	\$2.25 - \$3.50
Youth	Free	\$1.50
Senior/Disabled (RRFP)	\$1.00	\$1.00
ORCA LIFT	\$1.00	\$1.50

ST Express

ST Express buses provide transportation services throughout Snohomish, King and Pierce counties. ST Express routes provide fast service between major cities and job centers, and they allow for convenient transfers to train and local bus service.

	September 1, 2022 - Present	July 1, 2020 – August 30, 2022
Adult	\$3.25	\$3.25
Youth	Free	\$1.50
Senior/Disabled (RRFP)	\$1.00	\$1.00
ORCA LIFT	\$1.00	\$1.50

Sounder

Sounder provides weekday rail service to and from Seattle during peak hours. Sounder South extends 47.6 miles from Seattle to Lakewood, serving eight stations in Pierce and South King counties. Sounder South also provides limited reverse-peak service between Seattle and Tacoma. Sounder North extends 34.2 miles from Seattle to Everett, serving three stations in Snohomish County. Sounder charges a base fare of \$3.05 plus a distance charge of \$0.055 per mile, rounded to the nearest \$0.25. (See Appendix A for a chart of station-to-station fares.)

	September 1, 2022 - Present		March 1, 2021 – August 30, 2022	
	North Line	South Line	North Line	South Line
	Fare Range	Fare Range	Fare Range	Fare Range
Adult	\$3.25 - \$5.00	\$3.25 - \$5.75	\$3.25 - \$5.00	\$3.25 - \$5.75
Youth		Free		\$1.50
Senior/Disabled (RRFP)		\$1.00		\$1.00
ORCA LIFT		\$1.00		\$1.50

Tacoma Link

Tacoma Link light rail provides transportation services on a 1.6-mile line in downtown Tacoma between the Tacoma Dome and the Theater District/9th Street. Since the cost of fare collection would exceed projected revenue, Tacoma Link has operated from the start as a fare-free service.

In April 2016, the Sound Transit Board adopted Resolution R2016-10, postponing fares on Tacoma Link until the 2.4-mile Hilltop extension begins service in 2023. Currently Sound Transit receives \$29,000 per year under an agreement with the City of Tacoma and local Tacoma businesses in lieu of fares for Tacoma Link. The Sound Transit Board approved Resolution R2022-29 in October 2022, establishing T line fares of \$2.00 Adult, \$1.00 ORCA LIFT, \$0 Youth, and \$1.00 Senior/Disabled (RRFP) fare, to take effect when the new Hilltop Tacoma Link Extension opens in 2023.

Farebox recovery

Sound Transit policy establishes that farebox revenue must recover a specified percentage of operating costs. The percentage of farebox revenue to operating costs is called the farebox recovery ratio. Sound Transit calculates farebox recovery ratios by dividing fare revenues by direct and indirect service operating costs. Sound Transit policy was most recently stated in ST Board Resolution No. R2014-27, which establishes minimum farebox recovery ratio thresholds as follows:

- Link: 40%
- ST Express: 20%
- Sounder: 23%

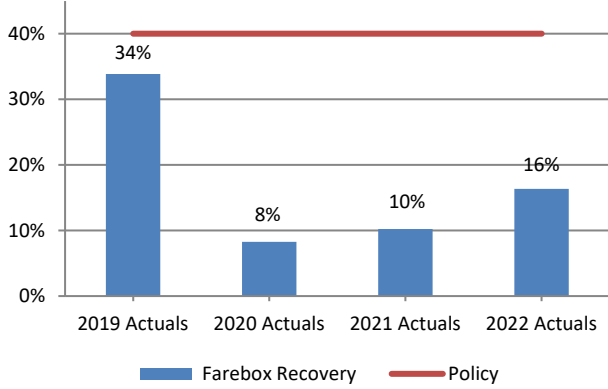
In 2022, all modes had an increase in farebox recovery rates over 2021 as economic conditions improved and ridership increased from pandemic lows.

- Link farebox revenue was 16% of operating costs in 2022 up from 10% in 2021; significantly lower than the 40% minimum policy threshold. Prepandemic 2019 farebox recovery was 34%.
- ST Express bus farebox revenue was 9% of operating costs in 2022 up from 7% in 2021; significantly lower than the 20% minimum policy threshold. Prepandemic 2019 farebox recovery was 25%.
- Sounder farebox revenue was 7% of operating costs in 2022 up from 5% in 2021; significantly lower than the 23% minimum policy threshold. Prepandemic 2019 farebox recovery was 31%.

While Link fare revenue increased in 2022 due to an increase in ridership, the average fare per boarding (AFB) has gone down compared to prior years due to an increase in non-fare boardings. Non-fare boardings are boardings where there is not an associated record of fare media use. The non fare boardings rate on Link was 44% in 2022 up from 14% in 2019, which indicates there are more passengers who are not tapping their ORCA cards, did not purchase a paper or mobile ticket, or using other fare media.

Link

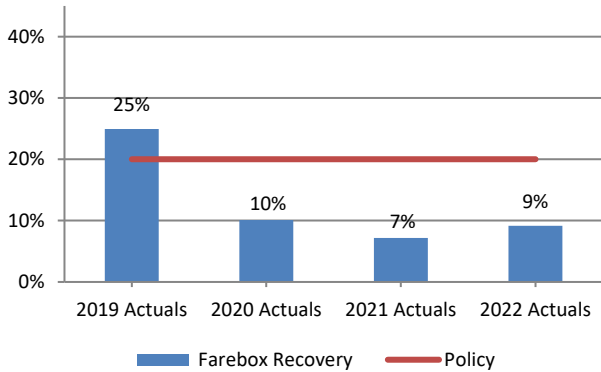
Link Farebox Recovery



Link Light Rail Farebox Recovery	Farebox Revenues	Operating Expenses	Farebox Recovery
2019 Actuals	\$43,241,285	\$127,727,513	34%
2020 Actuals	\$11,330,360	\$136,977,450	8%
2021 Actuals	\$15,591,469	\$152,752,633	10%
2022 Actuals	\$29,126,877	\$178,417,310	16%

ST Express

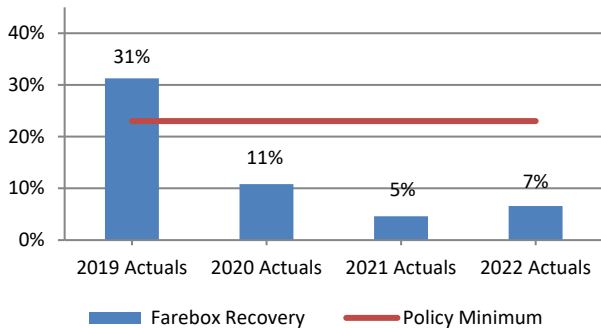
ST Express Farebox Recovery



ST Express Farebox Recovery	Farebox Revenues	Operating Expenses	Farebox Recovery
2019 Actuals	\$36,462,357	\$146,210,098	25%
2020 Actuals	\$13,660,408	\$135,408,614	10%
2021 Actuals	\$9,804,970	\$136,785,443	7%
2022 Actuals	\$11,982,131	\$131,047,108	9%

Sounder

Sounder Farebox Recovery



Sounder Farebox Recovery	Farebox Revenues	Operating Expenses	Farebox Recovery
2019 Actuals	\$17,213,961	\$55,054,427	31%
2020 Actuals	\$5,613,180	\$51,896,097	11%
2021 Actuals	\$2,751,291	\$59,760,001	5%
2022 Actuals	\$4,024,173	\$61,338,340	7%

Passenger fare revenue by mode

Sound Transit fare revenue increased overall by \$16.9 million in 2022, and boardings increased by 14.4 million. Link accounted for 65% of the total passenger fare revenue, ST Express was 26%, and Sounder was 9%.

In 2022, the overall average fare per boarding was \$1.42, down from \$1.62 in 2021, as the percentage of boardings without fare payment continued to increase. Non fare boardings accounted for 44% of total Link boardings in 2022, up from 14% in 2019. Non fare boardings accounted for 17% of total Sounder boardings in 2022, up from 2% in 2019.

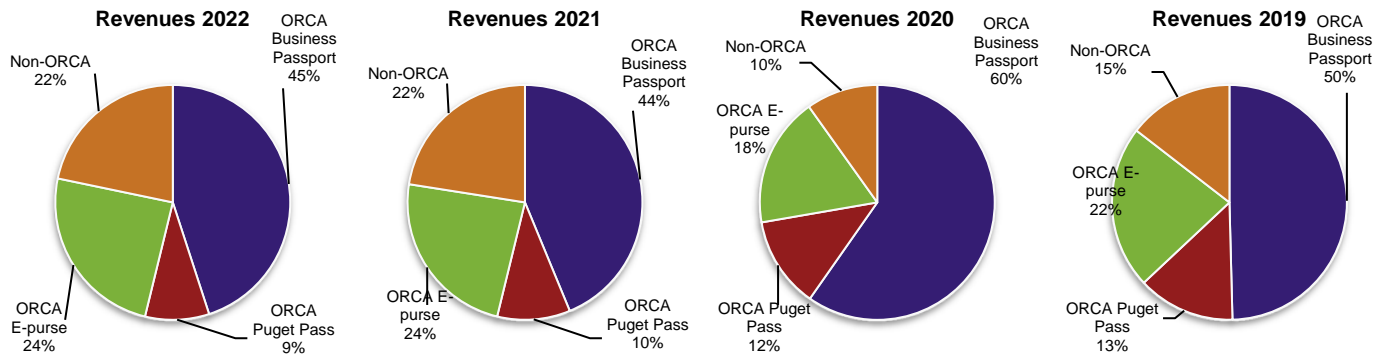
	REVENUES				% Change		
	2022	2021	2020	2019	2022-2021	2021-2020	2020-2019
Link Light Rail	\$ 29,126,877	\$ 15,591,469	\$ 11,330,360	\$ 43,241,285	87%	38%	-74%
ST Express	11,982,131	9,804,970	13,660,408	36,462,357	22%	-28%	-63%
Sounder	4,024,173	2,751,291	5,613,180	17,213,961	46%	-51%	-67%
	\$ 45,133,181	\$ 28,147,730	\$ 30,603,948	\$ 96,917,603	60%	-8%	-68%

	BOARDINGS				% Change		
	2022	2021	2020	2019	2022-2021	2021-2020	2020-2019
Link Light Rail	23,706,210	11,516,117	7,921,941	24,761,684	106%	45%	-68%
ST Express	6,852,694	5,146,374	6,264,772	17,494,527	33%	-18%	-64%
Sounder	1,269,923	734,481	1,265,882	4,612,244	73%	-42%	-73%
	31,828,827	17,396,972	15,452,595	46,868,455	83%	13%	-67%

	AVERAGE FARE PER BOARDING				% Change		
	2022	2021	2020	2019	2022-2021	2021-2020	2020-2019
Link Light Rail	\$ 1.23	\$ 1.35	\$ 1.43	\$ 1.75	-9%	-6%	-18%
ST Express	1.75	1.91	2.18	2.08	-8%	-12%	5%
Sounder	3.17	3.75	4.43	3.73	-15%	-15%	19%
	\$ 1.42	\$ 1.62	\$ 1.98	\$ 2.07	-12%	-18%	-4%

Passenger fare revenue by source

Sound Transit receives fare revenue from ORCA products, Sounder and Link ticket sales, Mobile Ticket sales and cash farebox receipts on ST Express. ORCA product use on Sound Transit services accounted for 78% of total fare revenue in 2022, the same percentage as in 2021 and down from 90% in 2020.



The breakdown of detailed revenue and ridership amounts for all product types, passenger types and route-level details rely on various assumptions for the allocation of non-ORCA generated revenues. These allocations may change and evolve as ridership and payment patterns change. The following is a brief description of the various fare payment methods and how those revenues are allocated.

ORCA products

ORCA Business Passport agreements are annual contracts based on the actual or estimated transit usage for a company or a geographical area and allocated to each agency based on the annual rate specific to each agency.

Per Sound Transit Board policy, Business Passport agreements need to be “priced according to the actual or estimated use at a level no lower than the fare revenue expected from the pass users as a group if the bulk purchase/distribution program were not in place.” The expected fare revenue is the amount of fare revenue historically collected from the group of program participants, based on their transit use prior to the Passport program. This amount acts as the introductory price for the initial Passport agreement. Agencies price renewal contracts based upon actual ridership during the prior contract period, which regularly results in revenue increases since the introduction of Passport programs usually results in increased ridership.

ORCA e-purse is stored transportation value used like cash to pay a fare. E-purse revenues are allocated to each agency and mode based on all trips traveled by the rider within the two-hour transfer window. For trips involving multiple agencies (“linked trips”), the highest total single fare of the linked trip is allocated among each of the agencies traveled. Each agency’s revenue allocation for a linked trip is based in proportion to the actual cash value of the fare each agency would have charged for the service.

ORCA Regional PugetPass is a monthly regional pass that allows for travel on bus, light rail or train services within the region on one or more participating agencies’ transit services. Regional passes are sold in denominations valid for payment of trip fares ranging in value from \$0.50 to \$5.75. ORCA agencies price the pass based on the value of 36 monthly trips, or \$9 per month for every \$0.25 in pass value. Funds received from the purchase of regional passes are allocated in proportion to the total value of services used on each agency during the period in which the pass is valid.

Non-ORCA products

Paper tickets are sold for one-way fares or as round trip/day passes via ticket machines for travel on Link and Sounder. Paper tickets are valid only for the origin and destination for which they are purchased. Ticket machines are located at all Link light rail and Sounder rail stations, and also at select transit centers.

Farebox includes cash and paper tickets deposited into fareboxes and are specific to ST Express.

Mobile tickets are available via the Transit GO Ticket mobile app. The app provides day passes, one-way and round-trip tickets for Link light rail and Sounder, and one-way tickets for ST Express. The mobile ticketing option started in December 2016 for Link light rail and Sounder, and in November 2019 for ST Express. In 2022, mobile ticket sales were \$1.5M, up from \$920K in 2021.

Other generally consists of revenues and boardings from non-ORCA fare media such as:

- Paper tickets such as Human Services Program tickets
- Unpaid rides including children ages 5 and under, Personal Care Attendants for riders with disabilities, free ride tickets, police officers or estimated fare evasion (see detail in “Special rates of fare” section)

Link

Link fare revenue increased by \$13.5 million in 2022 after increasing by \$4.3 million in 2021. Link ridership increased by 12.2 million boardings in 2022. Sound Transit attributes the ridership increase to less remote work and the opening of the Northgate Link extension in October 2021. Revenue still remains significantly below the prepandemic level of 2019.

Revenue by payment type

Link Payment Type	REVENUES				Change		
	2022	2021	2020	2019	2022-2021	2021-2020	2020-2019
ORCA Business Passport	\$ 12,325,728	\$ 6,342,712	\$ 6,488,917	\$ 18,536,530	94%	-2%	-65%
ORCA Puget Pass	2,216,115	1,193,921	1,290,030	5,007,466	86%	-7%	-74%
ORCA E-purse	6,740,832	3,369,182	1,868,005	9,526,581	100%	80%	-80%
VM/Paper Tickets	6,863,069	4,152,811	1,584,628	9,748,794	65%	162%	-84%
Mobile Tickets	981,133	532,843	98,780	421,914	84%	439%	-77%
Totals	\$ 29,126,877	\$ 15,591,469	\$ 11,330,360	\$ 43,241,285	87%	38%	-74%

Link Payment Type	BOARDINGS				Change		
	2022	2021	2020	2019	2022-2021	2021-2020	2020-2019
ORCA Business Passport	5,444,270	2,489,875	1,880,131	9,231,477	119%	32%	-80%
ORCA Puget Pass	948,112	559,425	542,150	2,833,905	69%	3%	-81%
ORCA E-purse	3,588,897	1,791,726	1,015,201	5,191,539	100%	76%	-80%
VM/Paper Tickets	2,915,840	1,708,582	698,103	3,907,989	71%	145%	-82%
Mobile Tickets	370,175	198,672	40,911	161,490	86%	386%	-75%
Non-Fare	10,438,916	4,767,837	3,745,445	3,435,284	119%	27%	9%
Totals	23,706,210	11,516,117	7,921,941	24,761,684	106%	45%	-68%

Link Payment Type	AVERAGE FARE PER BOARDING				Change		
	2022	2021	2020	2019	2022-2021	2021-2020	2020-2019
ORCA Business Passport ¹	\$ 2.26	\$ 2.55	\$ 3.45	\$ 2.01	-11%	-26%	72%
ORCA Puget Pass	2.34	2.13	2.38	1.77	10%	-11%	34%
ORCA E-purse	1.88	1.88	1.84	1.84	0%	2%	0%
VM/Paper Tickets	2.35	2.43	2.27	2.49	-3%	7%	-9%
Mobile Tickets	2.65	2.68	2.41	2.61	-1%	11%	-8%
Totals	\$ 1.23	\$ 1.35	\$ 1.43	\$ 1.75	-9%	-6%	-18%

¹ ORCA Business Passport – Combination of per trip, and fixed annual contracts that are priced based on previous year’s ridership.

Revenue by passenger type

Adult passenger fares accounted for 95% of total Link revenues with 2% from youth, 2% from reduced-fare passengers (qualifying seniors and persons with disabilities) and 1% from ORCA LIFT (low-income adults). Link averaged more than 5,200 unique ORCA LIFT (low-income) passengers monthly in 2022, up from about 3,200 in 2021.

Link Passenger Type	REVENUES				Change		
	2022	2021	2020	2019	2022-2021	2021-2020	2020-2019
Adult	\$ 27,577,773	\$ 4,585,986	\$ 10,481,590	\$ 39,763,356	89%	39%	-74%
Youth	639,510	464,928	365,942	1,693,824	38%	27%	-78%
RRFP	619,005	349,068	240,241	896,898	77%	45%	-73%
ORCA LIFT (Low Income)	290,589	191,487	242,587	887,207	52%	-21%	-73%
Totals	\$ 29,126,877	\$ 15,591,469	\$ 11,330,360	\$ 43,241,285	87%	38%	-74%

Link Passenger Type	BOARDINGS				Change		
	2022	2021	2020	2019	2022-2021	2021-2020	2020-2019
Adult	20,518,834	9,828,458	6,660,830	20,779,523	109%	48%	-68%
Youth	1,137,995	585,190	443,033	1,557,030	94%	32%	-72%
RRFP	1,506,322	847,267	619,144	1,488,665	78%	37%	-58%
ORCA LIFT (Low Income)	543,059	255,203	198,934	936,466	113%	28%	-79%
Totals	23,706,210	11,516,117	7,921,941	24,761,684	106%	45%	-68%

Link Passenger Type	AVERAGE FARE PER BOARDING				Change		
	2022	2021	2020	2019	2022-2020	2021-2020	2020-2019
Adult	\$ 1.34	\$ 1.48	\$ 1.57	\$ 1.91	-9%	-6%	-18%
Youth	0.56	0.79	0.83	1.09	-29%	-5%	-24%
RRFP	0.41	0.41	0.39	0.60	0%	5%	-35%
ORCA LIFT (Low Income)	0.54	0.75	1.22	0.95	-28%	-39%	28%
Totals	\$ 1.23	\$ 1.35	\$ 1.43	\$ 1.75	-9%	-6%	-18%

Fare compliance

In September 2021, Sound Transit replaced fare enforcement officers and started the Fare Ambassador program emphasizing passenger fare education and customer service to encourage fare compliance. In 2022, the Fare Ambassador program was continuing to ramp-up and hire Fare Ambassadors to meet its target for number of fare inspections. Fare compliance will continue to be monitored as the Fare Ambassador program matures and is fully implemented. The Sound Transit Board and Rider Experience and Operations Committee receive regular briefings on this program.

ST Express

ST Express is Sound Transit’s second largest mode in terms of boardings, serving major transportation corridors and transit centers in the Sound Transit District. Ridership increased by 1.7 million in 2022 and revenue increased by \$2.2 million. Sound Transit decreased frequency on several routes in 2022 due to operator shortages, including route 566 Auburn – Redmond, 577 Federal Way – Seattle, 590 Tacoma – Seattle, 592 DuPont – Seattle, and a route segment change on 580 South Hill – Puyallup.

Revenue by payment type

ST Express Payment Type	REVENUES				Change		
	2022	2021	2020	2019	2022-2021	2021-2020	2020-2019
ORCA Business Passport	\$ 5,574,274	\$ 4,284,438	\$ 7,890,047	\$ 19,054,498	30%	-46%	-59%
ORCA Puget Pass	1,454,563	1,357,361	1,928,539	5,766,613	7%	-30%	-67%
ORCA E-purse	3,388,259	2,759,323	2,717,577	8,704,459	23%	2%	-69%
Non-ORCA	1,565,035	1,403,848	1,124,245	2,936,787	11%	25%	-62%
Totals	\$ 11,982,131	\$ 9,804,970	\$ 13,660,408	\$ 36,462,357	22%	-28%	-63%

ST Express Payment Type	BOARDINGS				Change		
	2022	2021	2020	2019	2022-2021	2021-2020	2020-2019
ORCA Business Passport	2,202,705	1,374,119	1,904,592	7,793,579	60%	-28%	-76%
ORCA Puget Pass	652,211	659,359	716,727	2,477,844	-1%	-8%	-71%
ORCA E-purse	1,785,448	1,400,862	1,327,823	4,213,456	27%	6%	-68%
Non-ORCA	2,212,330	1,712,034	2,315,630	3,009,648	29%	-26%	-23%
Totals	6,852,694	5,146,374	6,264,772	17,494,527	33%	-18%	-64%

ST Express Payment Type	AVERAGE FARE PER BOARDING				Change		
	2022	2021	2020	2019	2022-2021	2021-2020	2020-2019
ORCA Business Passport ²	\$ 2.53	\$ 3.12	\$ 4.14	\$ 2.44	-19%	-25%	70%
ORCA Puget Pass	2.23	2.06	2.69	2.33	8%	-23%	15%
ORCA E-purse	1.90	1.97	2.05	2.07	-4%	-4%	-1%
Non-ORCA	0.71	0.82	0.49	0.98	-13%	67%	-50%
Totals	\$ 1.75	\$ 1.91	\$ 2.18	\$ 2.08	-8%	-12%	5%

² ORCA Business Passport – Combination of per trip and fixed annual contracts that are priced based on previous year’s ridership..

Revenue by passenger type

Adult fares account for 94% of total ST Express revenues, with 3% from reduced-fare passengers (qualifying seniors and persons with disabilities), 1% from youth and 2% from ORCA LIFT passengers (low-income adults). ST Express averaged more than 3,600 unique ORCA LIFT (low-income) passengers monthly in 2022.

ST Express		REVENUES				Change		
Passenger Type	2022	2021	2020	2019	2022-2021	2021-2020	2020-2019	
Adult	\$ 11,347,420	\$ 9,134,889	\$ 12,929,650	\$ 34,569,314	24%	-29%	-63%	
Youth	146,101	72,970	215,994	615,953	-16%	-20%	-65%	
RRFP	304,307	285,936	271,397	735,509	6%	5%	-63%	
ORCA LIFT (Low Income)	184,303	211,175	243,367	541,581	-13%	-13%	-55%	
Totals	\$ 11,982,131	\$ 9,804,970	\$ 13,660,408	\$ 36,462,357	22%	-28%	-63%	

ST Express		BOARDINGS				Change		
Passenger Type	2022	2021	2020	2019	2022-2021	2021-2020	2020-2019	
Adult	5,713,925	4,146,641	5,193,968	15,327,646	38%	-20%	-66%	
Youth	193,916	122,437	275,901	418,193	58%	-56%	-34%	
RRFP	604,607	575,761	576,740	1,164,573	5%	0%	-50%	
ORCA LIFT (Low Income)	340,246	301,535	218,163	584,115	13%	38%	-63%	
Totals	6,852,694	5,146,374	6,264,772	17,494,527	33%	-18%	-64%	

ST Express		AVERAGE FARE PER BOARDING				Change		
Passenger Type	2022	2021	2020	2019	2022-2021	2021-2020	2020-2019	
Adult	\$ 1.99	\$ 2.20	\$ 2.49	\$ 2.26	-10%	-12%	10%	
Youth	0.75	1.41	0.78	1.47	-47%	81%	-47%	
RRFP	0.50	0.50	0.47	0.63	0%	6%	-25%	
ORCA LIFT (Low Income)	0.54	0.70	1.12	0.93	-23%	-38%	20%	
Totals	\$ 1.75	\$ 1.91	\$ 2.18	\$ 2.08	-8%	-12%	-8%	

Sounder

Sounder revenue increased by \$1.3 million in 2022 with ridership increasing by more than 500,000 boardings. In 2022, Sounder South fare revenues increased by 45%, and Sounder North revenues increased by 66% led by increasing revenue from ORCA Business Passport use.

Revenue by payment type

Sounder Payment Type	REVENUES				Change		
	2022	2021	2020	2019	2022-2021	2021-2020	2020-2019
ORCA Business Passport	\$ 2,406,893	\$ 1,698,029	\$ 3,895,725	\$ 10,464,237	42%	-56%	-63%
ORCA Puget Pass	308,417	272,503	620,727	2,230,720	13%	-56%	-72%
ORCA E-purse	907,041	531,153	882,988	3,529,472	71%	-40%	-75%
VM/Paper Tickets	282,165	186,987	181,079	850,395	51%	3%	-79%
Mobile Tickets	119,658	62,619	32,657	139,138	91%	92%	-77%
Totals	\$ 4,024,173	\$ 2,751,291	\$ 5,613,180	\$ 17,213,961	46%	-51%	-67%

Sounder Payment Type	BOARDINGS				Change		
	2022	2021	2020	2019	2022-2021	2021-2020	2020-2019
ORCA Business Passport	586,219	354,947	672,907	2,714,237	65%	-47%	-75%
ORCA Puget Pass	86,736	62,889	130,041	554,492	38%	-52%	-77%
ORCA E-purse	276,546	161,941	252,683	1,016,793	71%	-36%	-75%
VM/Paper Tickets	67,509	50,817	47,520	200,645	33%	7%	-76%
Mobile Tickets	27,183	14,406	8,009	33,552	89%	80%	-76%
Non-Fare	225,730	89,481	154,722	92,525	152%	-42%	67%
Totals	1,269,923	734,481	1,265,882	4,612,244	73%	-42%	-73%

Sounder Payment Type	AVERAGE FARE PER BOARDING				Change		
	2022	2021	2020	2019	2022-2021	2021-2020	2020-2019
ORCA Business Passport ³	\$ 4.11	\$ 4.78	\$ 5.79	\$ 3.86	-14%	-17%	50%
ORCA Puget Pass	3.56	4.33	4.77	4.02	-18%	-9%	19%
ORCA E-purse	3.28	3.28	3.49	3.47	0%	-6%	1%
VM/Paper Tickets	4.18	3.68	3.81	4.24	14%	-3%	-10%
Mobile Tickets	4.40	4.35	4.08	4.15	1%	7%	-2%
Totals	\$ 3.17	\$ 3.75	\$ 4.43	\$ 3.73	-15%	-15%	19%

³ ORCA Business Passport – Combination of per trip and fixed annual contracts that are priced based on previous year's ridership.

Revenue by passenger type

Adult passenger fares accounted for 98% of Sounder revenues due to the market composition for commuter rail service. Sounder averaged more than 400 unique ORCA LIFT (low-income) passengers monthly in 2022, up from 200 in 2021.

Sounder Passenger Type	REVENUES				Change		
	2022	2021	2020	2019	2022-2021	2021-2020	2020-2019
Adult	\$ 3,954,312	\$ 2,697,221	\$ 5,472,652	\$ 16,707,048	47%	-51%	-67%
Youth	15,301	12,557	31,283	133,909	22%	-60%	-77%
RRFP	40,054	30,190	71,834	239,380	33%	-58%	-70%
ORCA LIFT (Low Income)	14,506	11,323	37,412	133,624	28%	-70%	-72%
Totals	\$ 4,024,173	\$ 2,751,291	\$ 5,613,180	\$ 17,213,961	46%	-51%	-67%

Sounder Passenger Type	BOARDINGS				Change		
	2022	2021	2020	2019	2022-2021	2021-2020	2020-2019
Adult	1,181,715	680,460	1,205,764	4,387,650	74%	-44%	-73%
Youth	15,576	8,544	9,137	43,349	82%	-6%	-79%
RRFP	48,154	32,628	37,285	128,689	48%	-12%	-71%
ORCA LIFT (Low Income)	24,478	12,849	13,696	52,556	91%	-6%	-74%
Totals	1,269,923	734,481	1,265,882	4,612,244	73%	-42%	-73%

Sounder Passenger Type	AVERAGE FARE PER BOARDING				Change		
	2022	2021	2020	2019	2022-2021	2021-2020	2020-2019
Adult	\$ 3.35	\$ 3.96	\$ 4.54	\$ 3.81	-15%	-12%	19%
Youth	0.98	1.47	3.42	3.09	-33%	-57%	11%
RRFP	0.83	0.93	1.93	1.86	-11%	-52%	4%
ORCA LIFT (Low Income)	0.59	0.88	2.73	2.54	-33%	-68%	7%
Totals	\$ 3.17	\$ 3.75	\$ 4.43	\$ 3.73	-15%	-15%	1%

Fare compliance

In September 2021, Sound Transit replaced fare enforcement officers and started the Fare Ambassador program emphasizing passenger fare education and customer service to encourage fare compliance. In 2022, the Fare Ambassador program was continuing to ramp-up and hire Fare Ambassadors to meet its target for number of fare inspections. Fare compliance will continue to be monitored as the Fare Ambassador program matures and is fully implemented. The Sound Transit Board and Rider Experience and Operations Committee receive regular briefings on this program.

Revenue by line

Sounder revenues are allocated to Sounder North and Sounder South based on the origin/destination of the trip taken. The maximum one-way adult fare on Sounder North is \$5.00 and is \$5.75 on Sounder South. The Sounder North average fare per boarding (shown below as AFB) for 2022 was \$3.78, and it was \$3.14 for Sounder South.

Sounder North					Change		
	2022	2021	2020	2019	2022-2021	2021-2020	2020-2019
Revenues	\$ 227,380	\$ 136,651	\$ 353,522	\$ 1,687,358	66%	-61%	-79%
Boardings	60,167	31,314	90,867	427,837	92%	-66%	-79%
AFB	\$ 3.78	\$ 4.36	\$ 3.89	\$ 3.94	-13%	12%	-1%

Sounder South					Change		
	2022	2021	2020	2019	2022-2021	2021-2020	2020-2019
Revenues	\$ 3,796,793	\$ 2,614,640	\$ 5,259,658	\$ 15,526,603	45%	-50%	-66%
Boardings	1,209,756	703,167	1,175,015	4,184,407	72%	-40%	-72%
AFB	\$ 3.14	\$ 3.72	\$ 4.48	\$ 3.71	-16%	-17%	21%

Sounder special event service

Sound Transit offers occasional special Sounder weekend service, primarily for major sporting events held at Lumen Field and T-Mobile Park. Special event boardings and revenues in the table below are included in Sounder totals presented earlier. There was no special event service in 2020.

Sounder					Change		
Special Events	2022	2021	2020	2019	2022-2021	2021-2020	2020-2019
Revenues	\$ 118,310	\$ 69,887	\$ -	\$ 229,449	69%	-	-
Boardings	28,663	14,743	-	54,001	94%	-	-
AFB	\$ 4.13	\$ 4.74	-	\$ 4.25	-13%	-	-
# of Events	24	5	-	22	380%	-	-

Special event service is particularly popular on the north line, which accounted for 42% of total special event boardings but only 0.9% of total Sounder boardings in 2022.

Sounder North					Change		
Special Events	2022	2021	2020	2019	2021-2020	2021-2020	2020-2019
Revenues	\$ 48,915	\$ 16,140	\$ -	\$ 80,537	203%	-	-
Boardings	12,025	3,491	-	18,210	244%	-	-
AFB	\$ 4.07	\$ 4.62	-	\$ 4.42	-12%	-	-
# of Events	24	5	-	22	380%	-	-

Sounder South					Change		
Special Events	2022	2021	2020	2019	2021-2020	2021-2020	2020-2019
Revenues	\$ 69,396	\$ 53,747	\$ -	\$ 148,912	29%	-	-
Boardings	16,638	11,252	-	35,791	48%	-	-
AFB	\$ 4.17	\$ 4.78	-	\$ 4.16	-13%	-	-
# of Events	24	5	-	22	380%	-	-

Special rates of fare

This section describes all Sound Transit fare rates other than the general retail rates as described in the “Fare structures” section above. The Sound Transit Fare Policy (Resolution No. R2014-27) allows for establishing a special rate of fare under certain conditions for special event service, ride-free zones, peace officer fares, discount and free fares (for the purposes of: marketing, educational outreach, customer relations, human services, demonstration of transit services and facility tours hosted by Sound Transit or local transit agencies, public emergencies, natural disasters) and employer/institutional programs. The table below shows the types of discounted/free fares offered and the value of the total discount in 2022 compared with 2021 through 2019. The following sections describe each special fare type further.

Fare media provided for transit promotional and marketing campaigns, educational outreach and transit training, and customer relations and complaint resolution include:

- Complimentary and discounted tickets/passes for one-way tickets on ST Express service valued at \$3.25 per trip (based on maximum value)
- Sounder day passes at \$10.00 per pass (Sounder North) and \$11.50 (Sounder South)
- Link light rail day passes at \$7.00 per pass

In 2022, the value of these discounts increased by about \$94,000 from the previous year, with the discount representing 2% of total passenger fare revenue.

Type of Fare	Value of Discount			
	2022	2021	2020	2019
Free Ride Zone - Tacoma	\$179,374	\$249,198	\$294,312	\$627,761
Peace Officers	25,819	14,826	13,727	46,934
Transit Promotional and Marketing Campaigns	7,050	98	7,455	13,501
Educational Outreach and Transit Training	21,535	6,945	21,064	46,683
Customer Relations and Complaint Resolution	39,054	61,712	51,459	68,914
Transit Demonstrations and Tours	-	1,128	203	3,008
Amtrak RailPlus Program	-	-	891	3,491
Human Services Tickets	237,995	166,019	118,716	303,019
Paratransit	1,948	1,852	1,404	5,266
Public emergencies and natural disasters	517	75	665	3,514
Low-Income Fare (ORCA LIFT) Promotion	-	-	37,530	80,560
ORCA LIFT Subsidized Annual Pass	189,464	106,366	11,130	-
Total	\$702,754	\$608,218	\$558,553	\$1,202,652
% of Total Fare Revenue	2%	2%	2%	1%

Mode	Value of Discount			
	2022	2021	2020	2019
Link	\$380,861	\$219,378	\$139,848	\$353,640
ST Express	113,657	120,491	90,343	152,885
Sounder	28,863	19,150	34,050	68,366
Tacoma Link	179,374	249,198	294,312	627,761
Total	\$702,754	\$608,218	\$558,553	\$1,202,652

Free ride zone - Tacoma Link

Currently Sound Transit receives \$29,000 per year under an agreement with the City of Tacoma and local Tacoma businesses in lieu of fares for Tacoma Link. This agreement eliminates the need for and cost of fare collection and enforcement. Per Sound Transit Board direction, fare collection is scheduled to begin when the Hilltop Tacoma Link Extension opens, which is currently scheduled for 2023.

In 2022 there were 267,722 Tacoma Link boardings, down from 371,938 in 2021.

The value of foregone revenue for these trips—assuming comparable transit fares and including the average fare impact of transfers, passes and discounts—is approximately \$1.00 per boarding. Price elasticity would reduce boardings in response to a fare, and ST estimates that foregone revenue is approximately \$0.67 per boarding, or \$179,374 in 2022.

Peace officer fares

Sound Transit recognizes any of the following as “fare payment” for peace officers:

- Law enforcement uniform
- Badge or identification

This applies to officers of a Washington general authority and/or federal law enforcement agency.

Sound Transit derived boarding estimates from the 2015-2016 Origin and Destination Survey. Sound Transit applied the percentage of peace officer boardings in 2015-2016 to estimate 2022 ridership, resulting in an estimated \$25,819 of foregone revenue.

Promotional and marketing campaigns

As part of some Sound Transit promotional and marketing campaigns, Sound Transit provides complimentary tickets/passes. Foregone revenue was \$7,050 in 2022. There were 1,196 complimentary tickets/passes distributed in 2022.

Educational outreach and transit training

Sound Transit conducts educational outreach and transit training events, primarily at local schools. Outreach includes Link, Sounder and Martin Luther King Corridor Safety programs. In 2022 Sound Transit provided 3,209 discounted tickets/passes at these events, up from 1,231 in 2021. The total foregone revenue from educational outreach and transit training was \$21,535 in 2022 and \$6,945 in 2021.

Customer relations and complaint resolution

For customer communications and complaint resolution, Sound Transit provides complimentary tickets/passes. The total foregone revenue was \$39,054 in 2022 and \$61,712 in 2021. Reasons for complimentary and discounted tickets/pass distribution included elevator and escalator outages and overcrowding during peak times.

Transit demonstrations and facility tours (includes conferences and industry tours)

Sound Transit provides complimentary and discounted tickets/passes for transit demonstration activities. The total amount of foregone revenue from this program in 2022 was \$0 and \$1,128 in 2021. Different hosted groups and conferences affect the totals for this category from year to year.

Amtrak RailPlus program

Sound Transit maintains an agreement with Amtrak to allow mutual acceptance of certain fare media on rail service between Seattle and Everett. Sound Transit reimburses Amtrak for each recorded instance of a Sounder rider using a qualifying pass on Amtrak service. There were no Rail Plus trips in 2022 and 2021.

Human Services Ticket Program

King County Metro coordinates the Human Services Ticket Program, which is administered by the King County Department of Community and Health Services. In 2022 Sound Transit participated in this program by selling Link day-passes to pre-qualified agencies at a 90% discount, and by accepting Metro tickets on ST Express bus service.

The Human Services Program sells discounted transit tickets or day passes to eligible human services agencies. These agencies provide tickets or day passes to clients experiencing homelessness and/or those who have very low incomes. The tickets help clients access shelters, health care, employment and related services critical to personal and residential stability. Per agreement with KCM, ST receives 10% of the retail price of day pass sales and 5% of the retail price of day passes sold in combination with Metro tickets.

The total foregone revenue resulting from the fare discount provided for this program was \$237,995 in 2022 and \$166,019 in 2021.

Paratransit access to Sound Transit fixed route service

In 2022 Sound Transit provided an estimated 1,372 free trips on ST fixed route modes for eligible paratransit shuttle riders. Sound Transit estimates foregone fare revenue for these trips is \$1,948. However, had these trips been taken on actual paratransit shuttle service, the cost would have been approximately \$115,714.

Public emergencies and natural disasters

In 2022 Sound Transit accommodated approximately 163 riders on special service buses due to mudslides and/or other Sound Transit service cancellations. The agency estimates foregone fare revenue for these trips to be \$517.

The number of riders for 2022 reflects the ongoing success of Sound Transit's Operations Department strategy to ensure bus bridge service to customers in the event of rail service disruptions. The practice provides a level of service that anticipates customers' needs and provides immediate service to compensate for the inconvenience of service disruptions.

Sound Transit contracts for coaches from Community Transit, King County Metro, Pierce Transit and Starline Luxury Coaches. When Sounder cannot operate, reduced operating expenses and lower revenues offset the cost of the bus bridges.

Employer/institutional programs

Per the ORCA agreement, Sound Transit may grant a temporary discount of no more than 20% to bulk pass purchasers as long as the purchaser offers a minimum 50% subsidy to the individual pass recipients.

Sound Transit provided no discounts to Business Accounts in 2022.

Low-income fare (ORCA LIFT) promotion

In 2018 the Sound Transit Board approved an interlocal agreement with King County Metro and Public Health that provided Sound Transit funding to train staff at State Department of Social and Health Services offices in Pierce and Snohomish counties to provide ORCA LIFT registration, making it more convenient for people to register for ORCA LIFT. Sound Transit is also providing funding for human services agencies to register ORCA LIFT customers at other locations in Pierce and Snohomish counties. Sound Transit is also providing funding for ORCA LIFT cards preloaded with \$10 (approximately 6-10 free rides) as an incentive for people to register for ORCA LIFT in King, Pierce and Snohomish counties. Together, these efforts help Sound Transit expand ORCA LIFT awareness and registration in Pierce and Snohomish counties and continue to promote ORCA LIFT in King County.

ORCA LIFT Subsidized Annual Pass Pilot Program

In partnership with King County Metro, Sound Transit began offering free ORCA passes to riders with incomes 80% below the federal poverty level (or lower) and who are also enrolled in one of six state benefit programs. The new subsidized annual pass is available to qualified riders living in King, Pierce and Snohomish counties and covers travel on services provided by King County Metro, Sound Transit and the City of Seattle.

The new program is intended to serve people with no income or very-low income who cannot afford the reduced fare on public transportation already available through ORCA LIFT, the Regional Reduced Fare Permit program or the ORCA youth fare. Sound Transit originally committed to join the program for a two-year pilot period. In 2022, the Board extended participation in the program until the end of 2024, or until a permanent program is approved.

The program started in October 2020 and by the end of 2022, 15,662 people enrolled in the subsidized annual pass program.

APPENDIX A - Fares by station

Sounder fare tables

Sounder South (Lakewood-Seattle)

<i>Adult</i>	Lakewood	South Tacoma	Tacoma	Puyallup	Sumner	Auburn	Kent	Tukwila	Seattle
Lakewood		\$3.25	\$3.50	\$4.00	\$4.00	\$4.50	\$4.75	\$5.00	\$5.75
South Tacoma	\$3.25		\$3.25	\$3.75	\$4.00	\$4.25	\$4.50	\$5.00	\$5.50
Tacoma	\$3.50	\$3.25		\$3.50	\$3.50	\$4.00	\$4.25	\$4.50	\$5.25
Puyallup	\$4.00	\$3.75	\$3.50		\$3.25	\$3.50	\$4.00	\$4.25	\$4.75
Sumner	\$4.00	\$4.00	\$3.50	\$3.25		\$3.50	\$3.75	\$4.00	\$4.75
Auburn	\$4.50	\$4.25	\$4.00	\$3.50	\$3.50		\$3.25	\$3.75	\$4.25
Kent	\$4.75	\$4.50	\$4.25	\$4.00	\$3.75	\$3.25		\$3.25	\$4.00
Tukwila	\$5.00	\$5.00	\$4.50	\$4.25	\$4.00	\$3.75	\$3.25		\$3.75
Seattle	\$5.75	\$5.50	\$5.25	\$4.75	\$4.75	\$4.25	\$4.00	\$3.75	

Sounder North (Everett-Seattle)

<i>Adult</i>	Everett	Mukilteo	Edmonds	Seattle
Everett		\$3.25	\$4.00	\$5.00
Mukilteo	\$3.25		\$3.75	\$4.50
Edmonds	\$4.00	\$3.75		\$4.00
Seattle	\$5.00	\$4.50	\$4.00	

Youth – Free

Reduced fare – All one-way fares \$1.00

[Link](#)

<i>Adult</i>	Northgate	Roosevelt	U-District	UW	Capitol Hill	Downtown Tunnel stations*	Stadium	SODO	Beacon Hill	Mt. Baker	Columbia City	Othello	Rainier Beach	Tukwila Int'l	SeaTac/Airport	Angle Lake
Northgate		\$2.25	\$2.50	\$2.50	\$2.50	\$2.75	\$2.75	\$2.75	\$2.75	\$2.75	\$3.00	\$3.00	\$3.00	\$3.25	\$3.50	\$3.50
Roosevelt	\$2.25		\$2.25	\$2.25	\$2.50	\$2.50	\$2.50	\$2.50	\$2.75	\$2.75	\$2.75	\$2.75	\$3.00	\$3.25	\$3.25	\$3.25
U-District	\$2.50	\$2.25		\$2.25	\$2.50	\$2.50	\$2.50	\$2.50	\$2.75	\$2.75	\$2.75	\$2.75	\$2.75	\$3.25	\$3.25	\$3.25
UW	\$2.50	\$2.25	\$2.25		\$2.25	\$2.50	\$2.50	\$2.50	\$2.50	\$2.50	\$2.75	\$2.75	\$2.75	\$3.00	\$3.25	\$3.25
Capitol Hill	\$2.50	\$2.50	\$2.50	\$2.25		\$2.25	\$2.25	\$2.25	\$2.50	\$2.50	\$2.50	\$2.50	\$2.75	\$3.00	\$3.00	\$3.00
Downtown Tunnel stations	\$2.75	\$2.50	\$2.50	\$2.50	\$2.25		\$2.25	\$2.25	\$2.25	\$2.50	\$2.50	\$2.50	\$2.50	\$3.00	\$3.00	\$3.00
Stadium	\$2.75	\$2.50	\$2.50	\$2.50	\$2.25	\$2.25		\$2.25	\$2.25	\$2.25	\$2.25	\$2.50	\$2.50	\$2.75	\$3.00	\$3.00
SODO	\$2.75	\$2.75	\$2.50	\$2.50	\$2.25	\$2.25	\$2.25		\$2.25	\$2.25	\$2.25	\$2.50	\$2.50	\$2.75	\$2.75	\$3.00
Beacon Hill	\$2.75	\$2.75	\$2.75	\$2.50	\$2.50	\$2.25	\$2.25	\$2.25		\$2.25	\$2.25	\$2.50	\$2.50	\$2.75	\$2.75	\$3.00
Mt. Baker	\$2.75	\$2.75	\$2.75	\$2.50	\$2.50	\$2.50	\$2.25	\$2.25	\$2.25		\$2.25	\$2.25	\$2.50	\$2.75	\$2.75	\$3.00
Columbia City	\$3.00	\$2.75	\$2.75	\$2.75	\$2.50	\$2.50	\$2.25	\$2.25	\$2.25	\$2.25		\$2.25	\$2.25	\$2.50	\$2.75	\$2.75
Othello	\$3.00	\$2.75	\$2.75	\$2.75	\$2.50	\$2.50	\$2.50	\$2.50	\$2.50	\$2.25	\$2.25		\$2.25	\$2.50	\$2.75	\$2.75
Rainier Beach	\$3.00	\$3.00	\$2.75	\$2.75	\$2.75	\$2.50	\$2.50	\$2.50	\$2.50	\$2.50	\$2.25	\$2.25		\$2.50	\$2.50	\$2.75
Tukwila Int'l	\$3.25	\$3.25	\$3.25	\$3.00	\$3.00	\$3.00	\$2.75	\$2.75	\$2.75	\$2.75	\$2.50	\$2.50	\$2.50		\$2.25	\$2.50
SeaTac/Airport	\$3.50	\$3.25	\$3.25	\$3.25	\$3.00	\$3.00	\$3.00	\$2.75	\$2.75	\$2.75	\$2.75	\$2.75	\$2.50	\$2.25		\$2.25
Angle Lake	\$3.50	\$3.25	\$3.25	\$3.25	\$3.00	\$3.00	\$3.00	\$3.00	\$3.00	\$3.00	\$2.75	\$2.75	\$2.75	\$2.50	\$2.25	

*Downtown Tunnel stations include: Westlake, University St., Pioneer Square and International District/Chinatown

Youth – Free

Reduced fare – All one-way fares \$1.00

APPENDIX B - ST Express route detail

Revenue by route

2022 revenues for ST Express increased from 2021 levels. Revenues for ST Express routes are allocated as follows:

ST Express Route	REVENUES						
	2022	2021	2020	2019	2022-2021	2021-2022	2020-2019
508	\$ -	\$ -	\$ 6,184	\$ -	-%	-%	-%
510	522,346	382,931	560,348	1,603,656	36%	-32%	-65%
511	206,477	269,286	539,598	1,642,354	-23%	-50%	-67%
512	886,878	1,040,527	1,276,101	3,217,690	-15%	-18%	-60%
513	120,634	50,721	140,704	527,486	138%	-64%	-73%
522	663,202	840,866	1,151,208	2,868,856	-21%	-27%	-60%
532	241,989	183,525	407,390	1,375,174	32%	-55%	-70%
535	455,844	280,936	406,005	1,234,334	62%	-31%	-67%
540	-	-	72,775	262,944	-	-100%	-72%
541	10	47	96,933	371,935	-79%	-100%	-74%
542	750,415	400,990	561,201	1,308,321	87%	-29%	-57%
544	121	134	156	-	-10%	-14%	-%
545	1,612,992	990,835	1,520,818	4,711,809	63%	-35%	-68%
550	1,342,381	908,454	1,257,561	3,942,170	48%	-28%	-68%
554	793,093	516,709	687,283	1,898,847	53%	-25%	-64%
555/556	113,409	21,564	177,935	790,565	426%	-88%	-77%
560	469,651	393,525	415,399	866,594	19%	-5%	-52%
566	184,932	171,207	227,787	574,886	8%	-25%	-60%
567	75	-	73,102	310,213	-	-100%	-76%
574	904,863	800,633	805,301	1,596,735	13%	-1%	-50%
577	450,613	484,844	540,353	1,109,002	-7%	-10%	-51%
578	579,846	521,250	543,551	1,069,234	11%	-4%	-49%
580	14,499	21,461	101,813	299,473	-32%	-79%	-66%
586	161,945	125,215	177,030	316,711	29%	-29%	-44%
590	525,257	519,961	754,935	1,819,837	1%	-31%	-59%
592	136,973	122,749	216,273	539,791	12%	-43%	-60%
594	702,411	688,763	793,941	1,760,264	2%	-13%	-55%
595	94,299	45,922	77,798	226,420	105%	-41%	-66%
596	46,976	21,915	70,925	217,056	114%	-69%	-67%
Sounder Bus	-	-	-	-	-%	-%	-%
Totals	\$ 11,982,131	\$ 9,804,970	\$ 13,660,408	\$ 36,462,357	22%	-28%	-63%

ST Express ridership increased by 33% in 2022, led by growth of over 600,000 boardings on both Routes 550 and 545.

ST Express Route	BOARDINGS				Change		
	2022	2021	2020	2019	2022-2021	2021-2020	2020-2019
508			22,092	-	-%	-%	-%
510	201,192	120,787	157,873	507,021	67%	-23%	-69%
511	104,609	100,959	157,246	534,806	4%	-36%	-71%
512	577,274	565,591	625,789	1,484,726	2%	-10%	-58%
513	63,103	20,298	35,543	160,863	211%	-43%	-78%
522	521,227	486,469	568,438	1,538,921	7%	-14%	-63%
532	102,373	70,575	135,138	488,870	45%	-48%	-72%
535	253,481	148,946	187,335	537,173	70%	-20%	-65%
540	-	-	27,429	147,252	-%	-100%	-81%
541	-	-	40,104	225,404	-%	-100%	-82%
542	284,489	166,110	209,925	711,725	71%	-21%	-71%
544	-	-	1,032	-	-%	-100%	-%
545	851,163	539,310	677,802	2,371,817	58%	-20%	-71%
550	945,140	630,814	716,765	2,226,541	50%	-12%	-68%
554	508,296	341,677	382,394	1,040,709	49%	-11%	-63%
555/556	48,565	9,929	62,560	337,366	389%	-84%	-81%
560	342,887	251,130	273,202	555,700	37%	-8%	-51%
566	99,693	99,158	127,977	338,659	1%	-23%	-62%
567	-	-	31,908	171,030	-%	-100%	-81%
574	503,592	392,748	400,516	747,225	28%	-2%	-46%
577	229,717	212,256	231,155	547,155	8%	-8%	-58%
578	377,774	300,738	319,185	606,904	26%	-6%	-47%
580	8,842	17,187	53,510	219,151	-49%	-68%	-76%
586	57,925	41,006	39,633	107,484	41%	3%	-63%
590	225,421	208,932	248,766	669,036	8%	-16%	-63%
592	59,537	49,983	71,615	195,863	19%	-30%	-63%
594	423,668	340,293	378,671	761,845	25%	-10%	-50%
595	33,641	18,116	22,737	77,496	86%	-20%	-71%
596	22,966	16,204	38,674	147,839	42%	-58%	-74%
Extra Shadow Bus	6,119	-2,842	19,170	-	-%	-%	-%
Central Link Bus	-	-	-	34,198	-315%	-115%	-%
Sounder Bus	-	-	588	1,748	67%	-%	-66%
Totals	6,852,694	5,146,374	6,264,772	17,494,527	33%	-18%	-64%

ST Express average fare per boarding decreased by 8% in 2022 and 13% in 2021.

ST Express Route	AVERAGE FARE PER BOARDING				Change		
	2022	2021	2020	2019	2022-2021	2021-2020	2020-2019
508	\$ -	\$ -	\$ 0.28	\$ -	-%	-%	-%
510	2.60	3.17	3.55	3.16	-18%	-11%	12%
511	1.97	2.67	3.43	3.07	-26%	-23%	12%
512	1.54	1.84	2.04	2.17	-16%	-10%	-6%
513	1.91	2.50	3.96	3.28	-23%	-37%	21%
522	1.27	1.73	2.03	1.86	-26%	-15%	9%
532	2.36	2.60	3.01	2.81	-9%	-14%	7%
535	1.80	1.89	2.17	2.30	-5%	-13%	-6%
540	-	-	2.65	1.79	-%	-%	49%
541	-	-	2.42	1.65	-%	-%	46%
542	2.64	2.41	2.67	1.84	9%	-10%	45%
544	-	-	0.15	-	-%	-%	-%
545	1.90	1.84	2.24	1.99	3%	-18%	13%
550	1.42	1.44	1.75	1.77	-1%	-18%	-1%
554	1.56	1.51	1.80	1.82	3%	-16%	-1%
555/556	2.34	2.17	2.84	2.34	8%	-24%	21%
560	1.37	1.57	1.52	1.56	-13%	3%	-2%
566	1.86	1.73	1.78	1.70	7%	-3%	5%
567	-	-	2.29	1.81	-%	-%	26%
574	1.80	2.04	2.01	2.14	-12%	1%	-6%
577	1.96	2.28	2.34	2.03	-14%	-2%	15%
578	1.53	1.73	1.70	1.76	-11%	2%	-3%
580	1.64	1.25	1.90	1.37	31%	-34%	39%
586	2.80	3.05	4.47	2.95	-8%	-32%	52%
590	2.33	2.49	3.03	2.72	-6%	-18%	12%
592	2.30	2.46	3.02	2.76	-6%	-19%	10%
594	1.66	2.02	2.10	2.31	-18%	-4%	-9%
595	2.80	2.53	3.42	2.92	11%	-26%	17%
596	2.05	1.35	1.83	1.47	51%	-26%	25%
Totals	\$ 1.75	\$ 1.91	\$ 2.18	\$ 2.08	-8%	-13%	5%